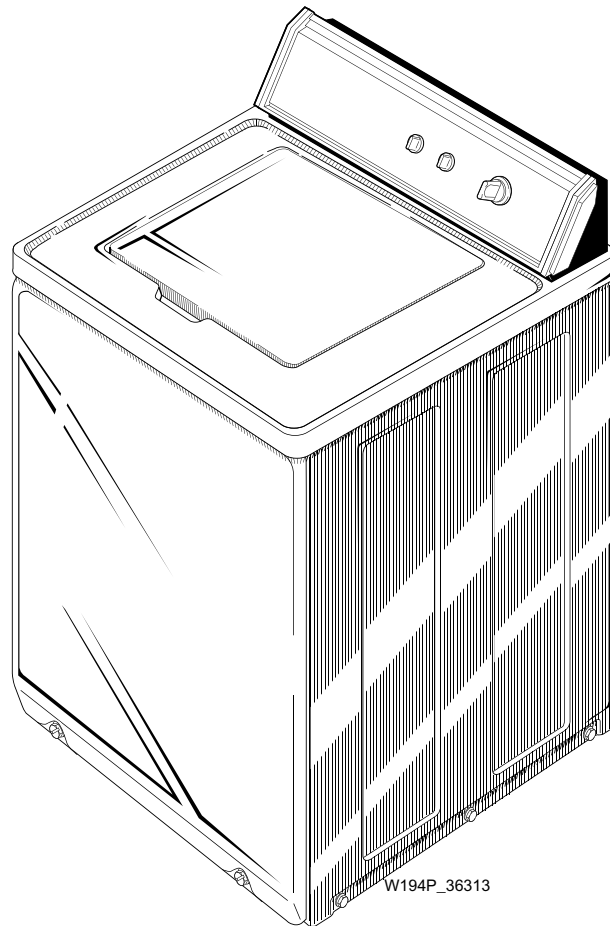


Automatic Washers AWM 2

Parts

Refer to Page 2 for Model Numbers



W194P_36313

Model Identification

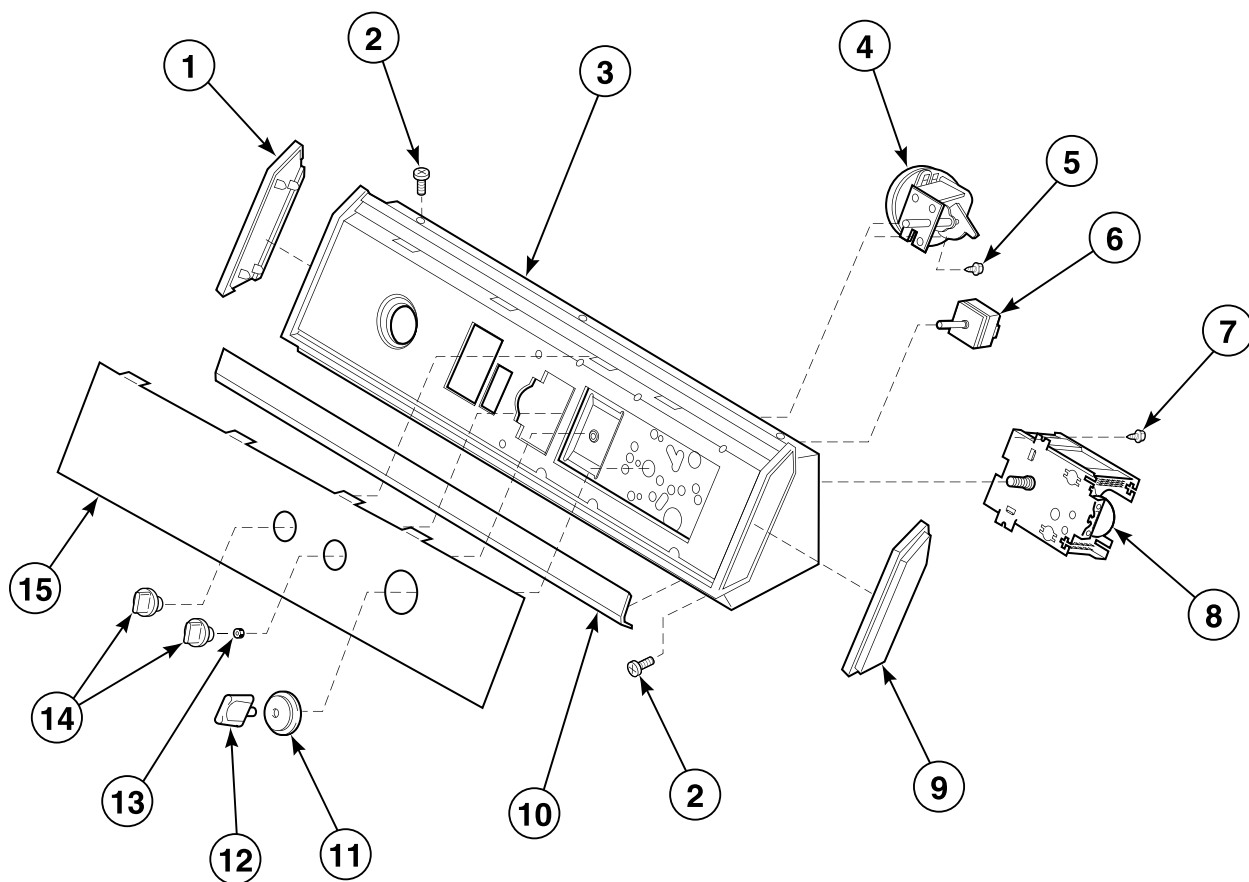
Information in this manual is applicable to these washer models:

AWM250*-2200	AWM392*-3000	AWM393*21000	KAW793*-3050	SWM190*
AWM251*-2200	AWM392*-3300	AWM393*22200	KWM372*-1109	UWE993*-1102
AWM251*-99E7	AWM392*21000	AWM393*23000	KWM373*-1109	UWM392*-1000
AWM270*-3062	AWM392*22200	AWM393*23050	KWM472*-1109	UWM392*-1102
AWM292*-2200	AWM392*23000	AWM393*23059	KWM573*-1109	UWM593*-1102
AWM292*22200	AWM392*23300	AWM393*23069	NWM393*-3059	ZWM372*-3059
AWM293*-2200	AWM393*-1000	AWM393*23300	PA9392*-2200	ZWM373*-3059
AWM293*22200	AWM393*-2200	AWM593*-2200	PA9393*-2200	ZWM373*-3069
AWM372*-3062	AWM393*-3000	AWM593*22200	PA9693*-2200	
AWM373*-3062	AWM393*-3050	BWM372*	RWM274*-3062	
AWM392*-1000	AWM393*-3059	KAW393*-3050	RWM372*-3062	
AWM392*-2200	AWM393*-3300	KAW693*-3050	RWM373*-3062	

* Add Letter To Designate Color. H - Harvest Gold L - Almond W - White

Graphic Panel, Control Hood and Controls (Drawing 1 of 12)

Models AWM270*-3062, AWM372*-3062, AWM373*-3062, BWM372*, KWM372*-1109,
KWM373*-1109, KWM472*-1109 and KWM573*-1109

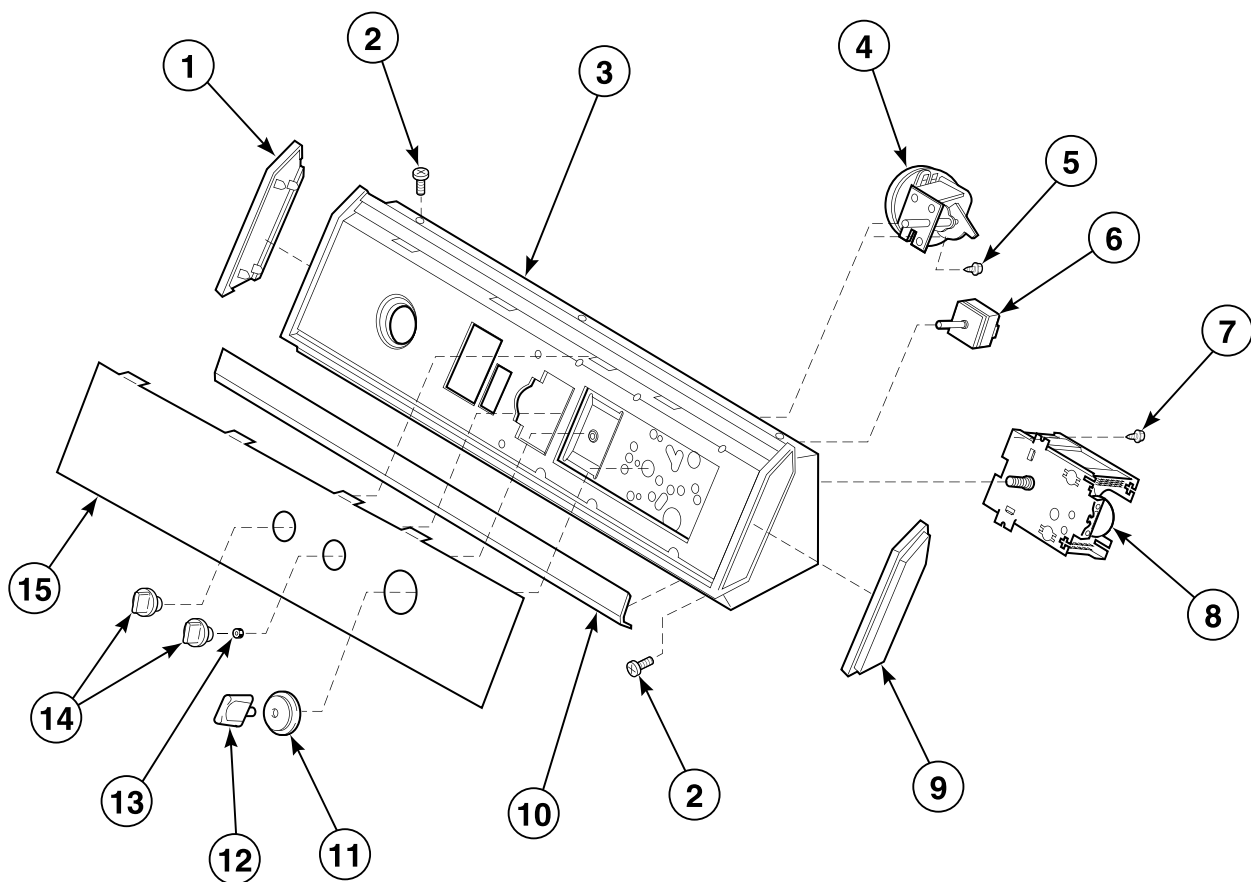


W172P_36313

AWM2 P1

Graphic Panel, Control Hood and Controls (Drawing 2 of 12)

Models AWM250*-2200, AWM251*-2200, AWM292*-2200, AWM293*-2200, AWM392*-2200,
AWM393*-2200, AWM593*-2200, PA9392*-2200 and PA9393*-2200

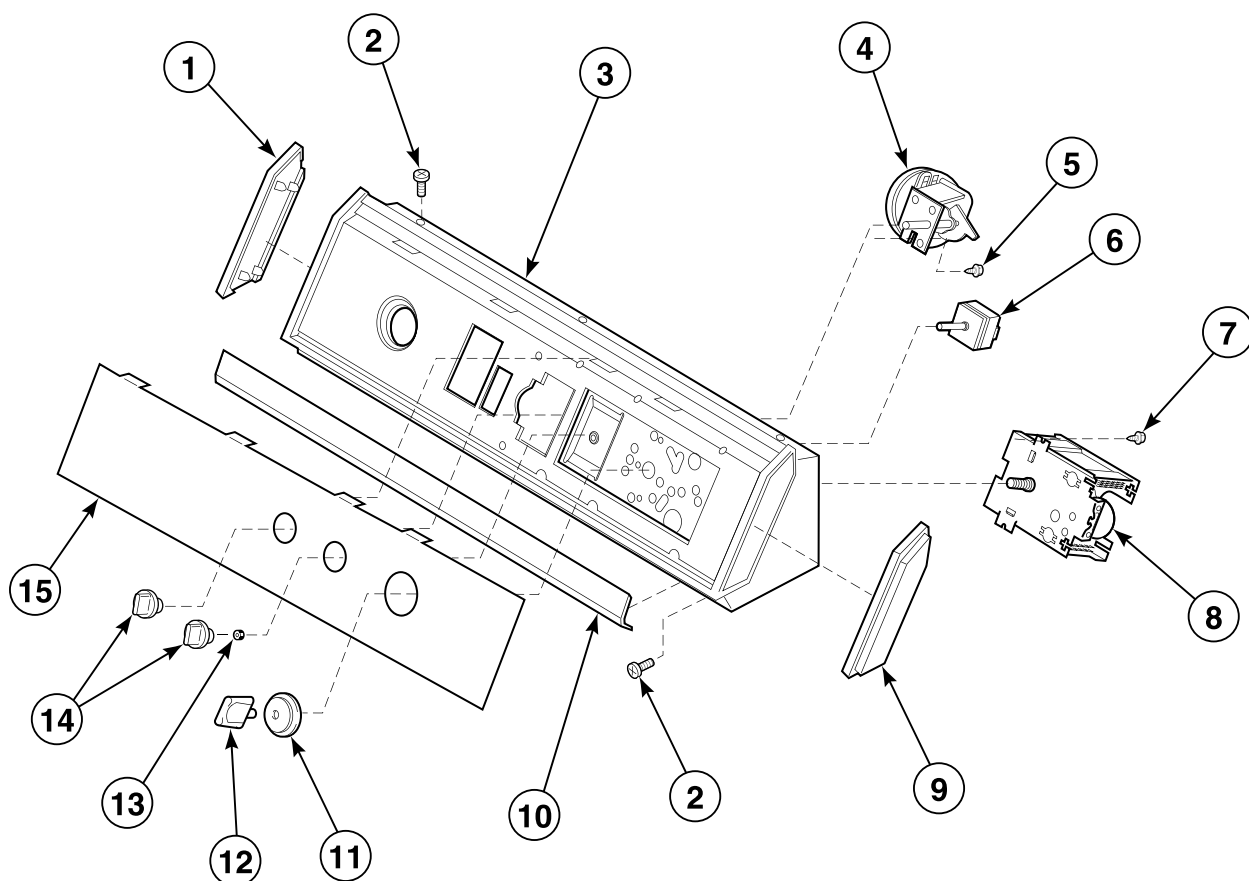


W172P_36313

AWM2 P2

Graphic Panel, Control Hood and Controls (Drawing 3 of 12)

Models AWM292*22200, AWM293*22200, AWM392*22200, AWM393*22200 and AWM593*22200

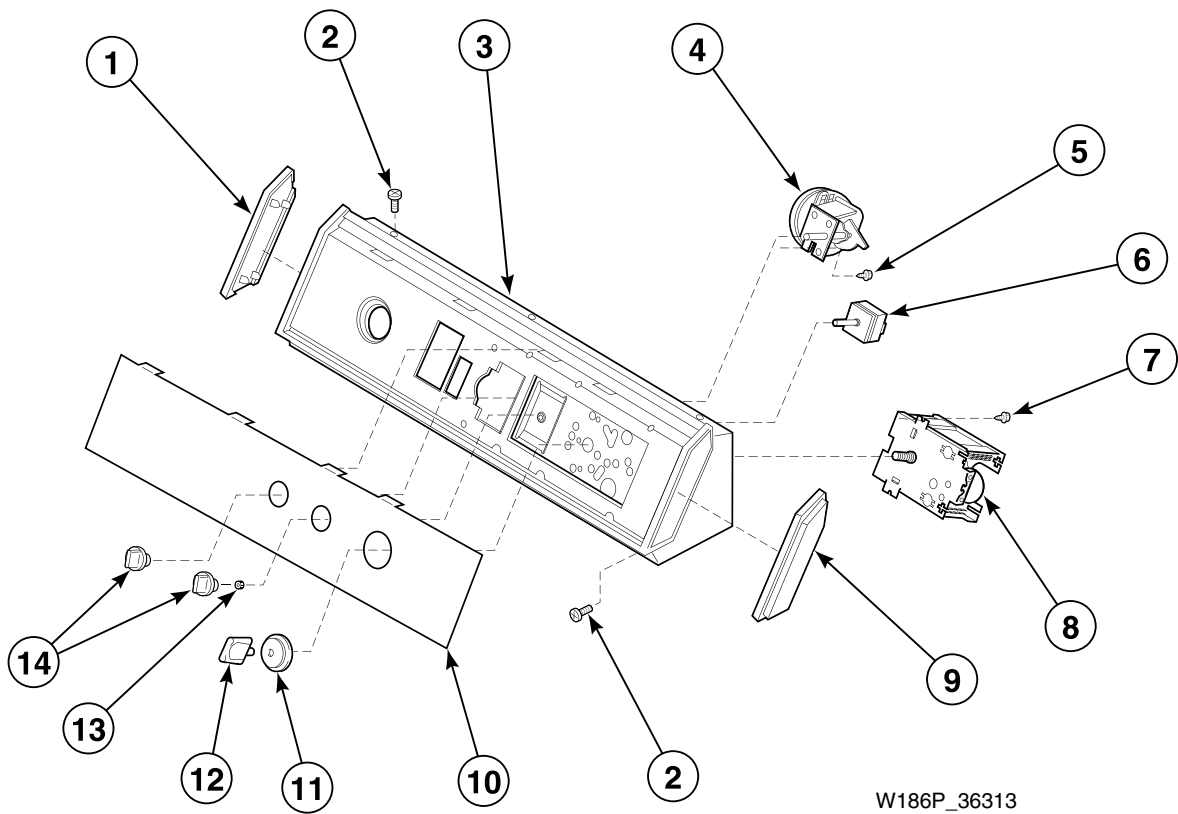


W172P_36313

AWM2 P3

Graphic Panel, Control Hood and Controls (Drawing 4 of 12)

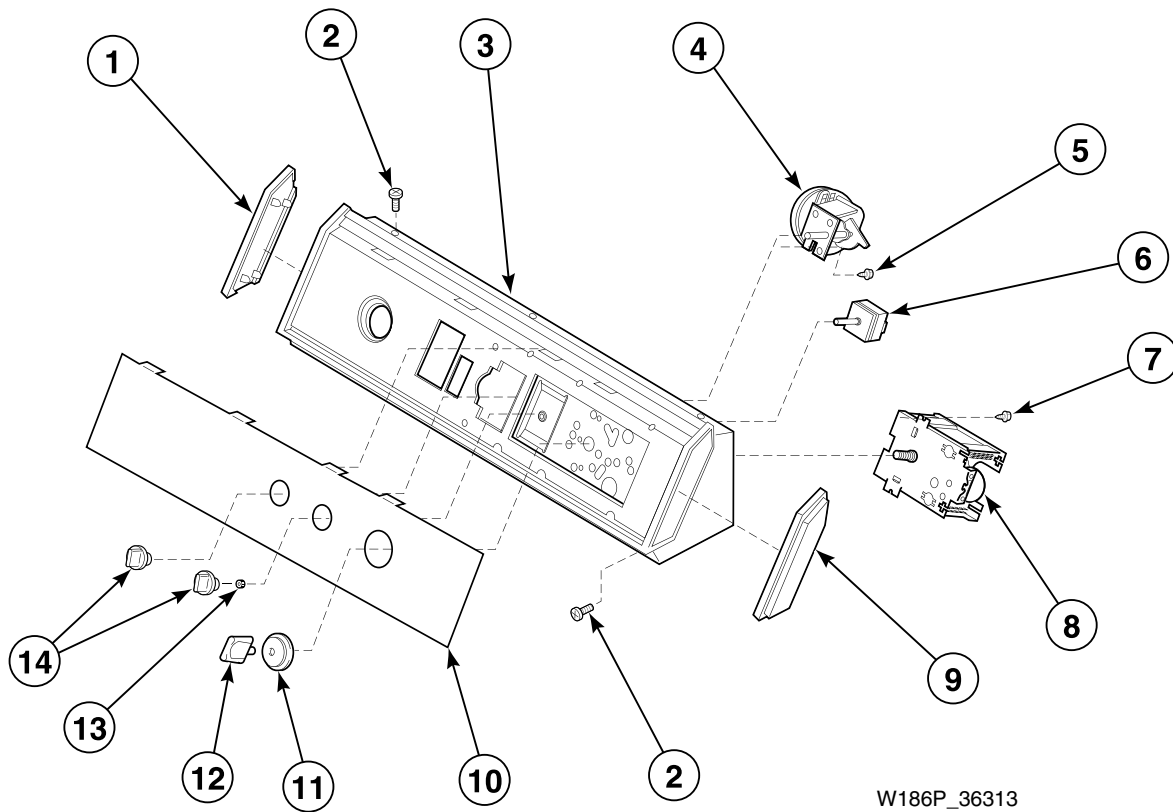
Models AWM392*-1000, AWM392*-3000, AWM392*-3300, AWM393*-1000,
AWM393*-3000, AWM393*-3050 and AWM393*-3300



W186P_36313

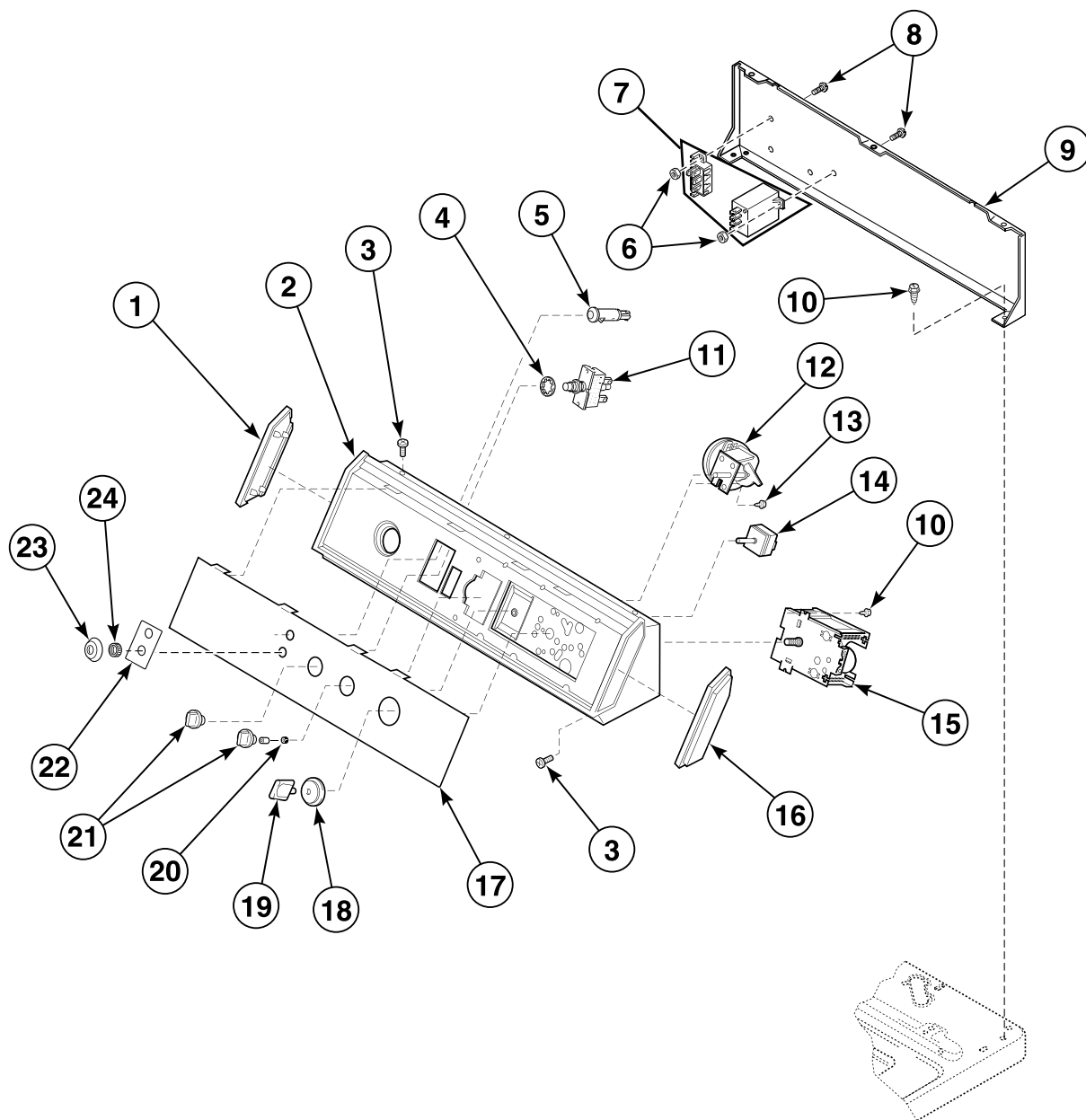
Graphic Panel, Control Hood and Controls (Drawing 5 of 12)

Models AWM392*21000, AWM392*23000, AWM392*23300, AWM393*21000, AWM393*23000, AWM393*23050, AWM393*23300 and UWM392*-1000



Graphic Panel, Control Hood and Controls (Drawing 6 of 12)

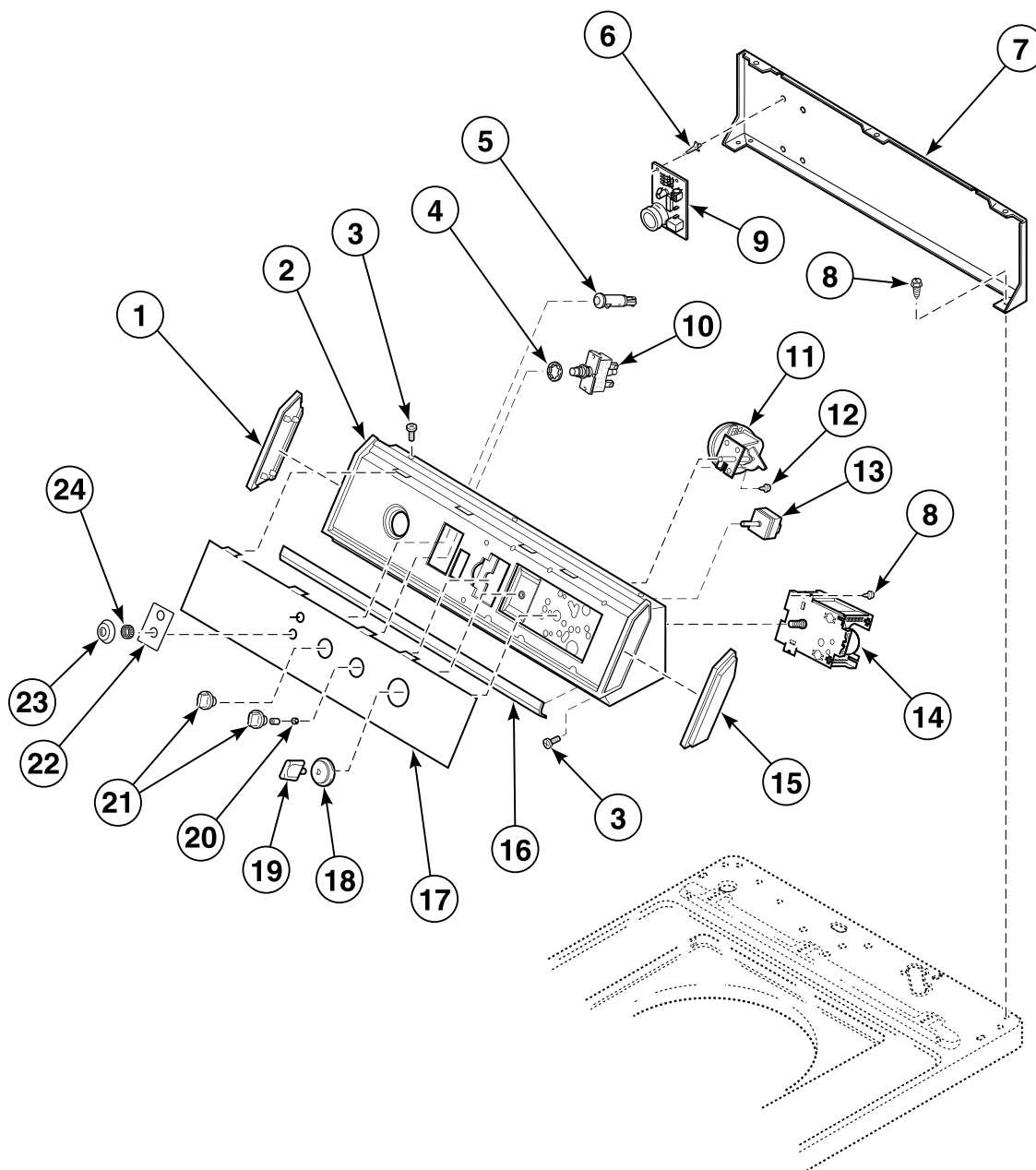
Models AWM393*-3059, AWM393*23059 and NWM393*-3059



W187P_36313

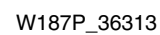
Graphic Panel, Control Hood and Controls (Drawing 7 of 12)

Models AWM393*23069 and ZWM373*-3069



W224P_36313

Models ZWM372*-3059 and ZWM373*-3059

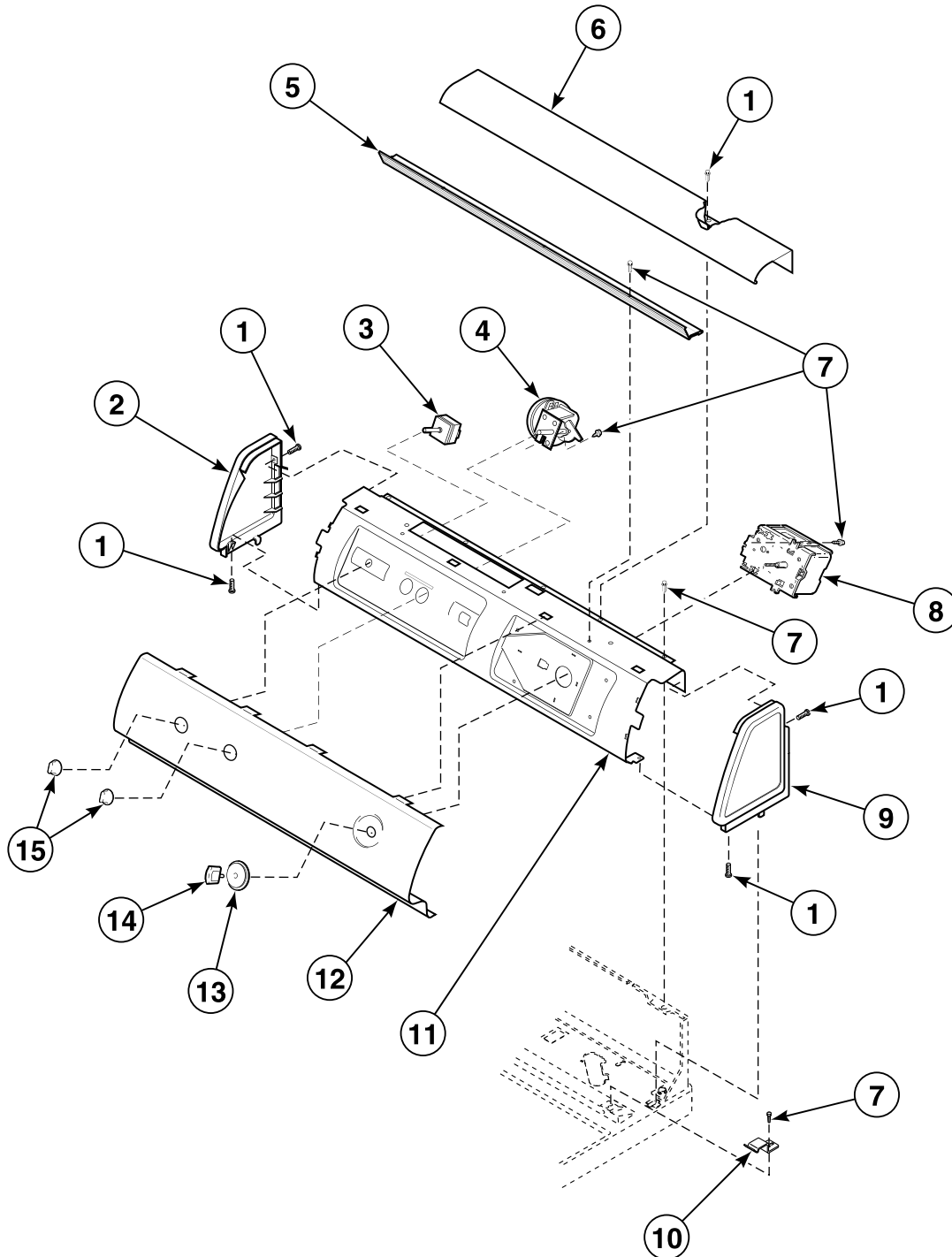


Models KAW693*-3050 and PA9693*-2200



Graphic Panel, Control Mounting Plate and Controls (Drawing 1 of 2)

Models KAW393*-3050, RWM274*-3062, RWM372*-3062 and RWM373*-3062

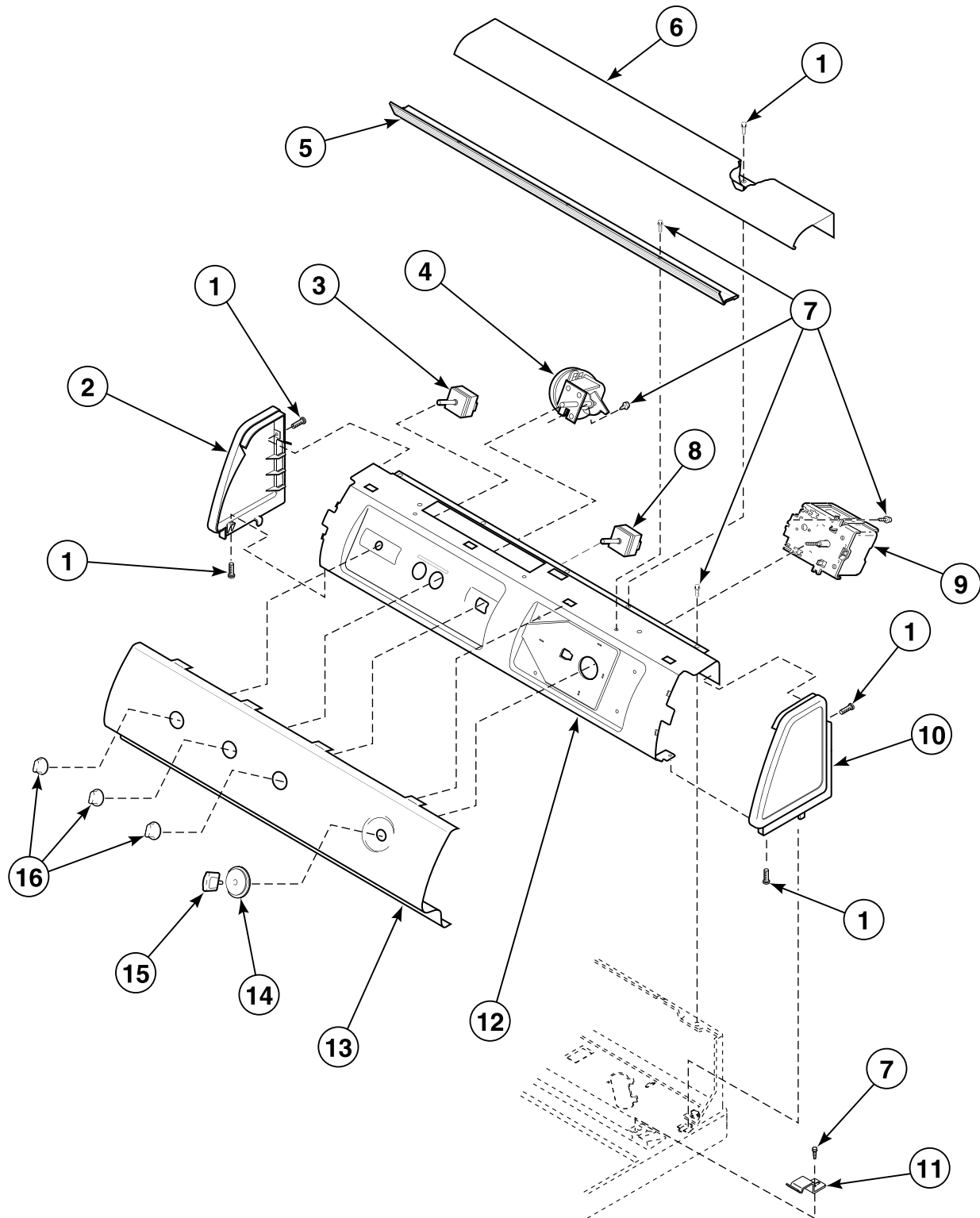


W018B_36313

AWM2 P10

Graphic Panel, Control Mounting Plate and Controls (Drawing 2 of 2)

Models KAW793*-3050 and AWM251*-99E7

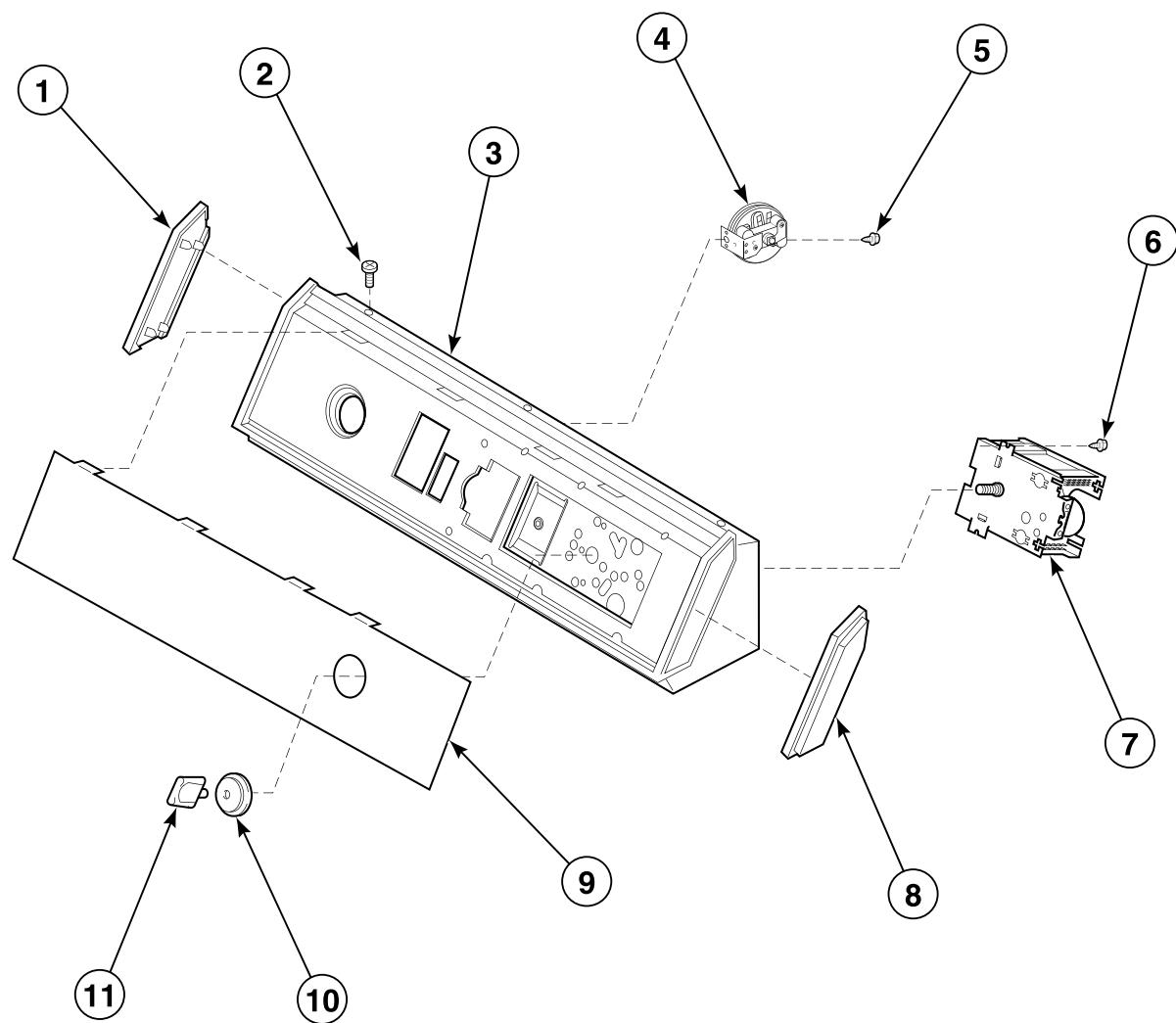


W281P_36313

AWM2 P11

Graphic Panel, Control Hood and Controls (Drawing 10 of 12)

Model SWM190*

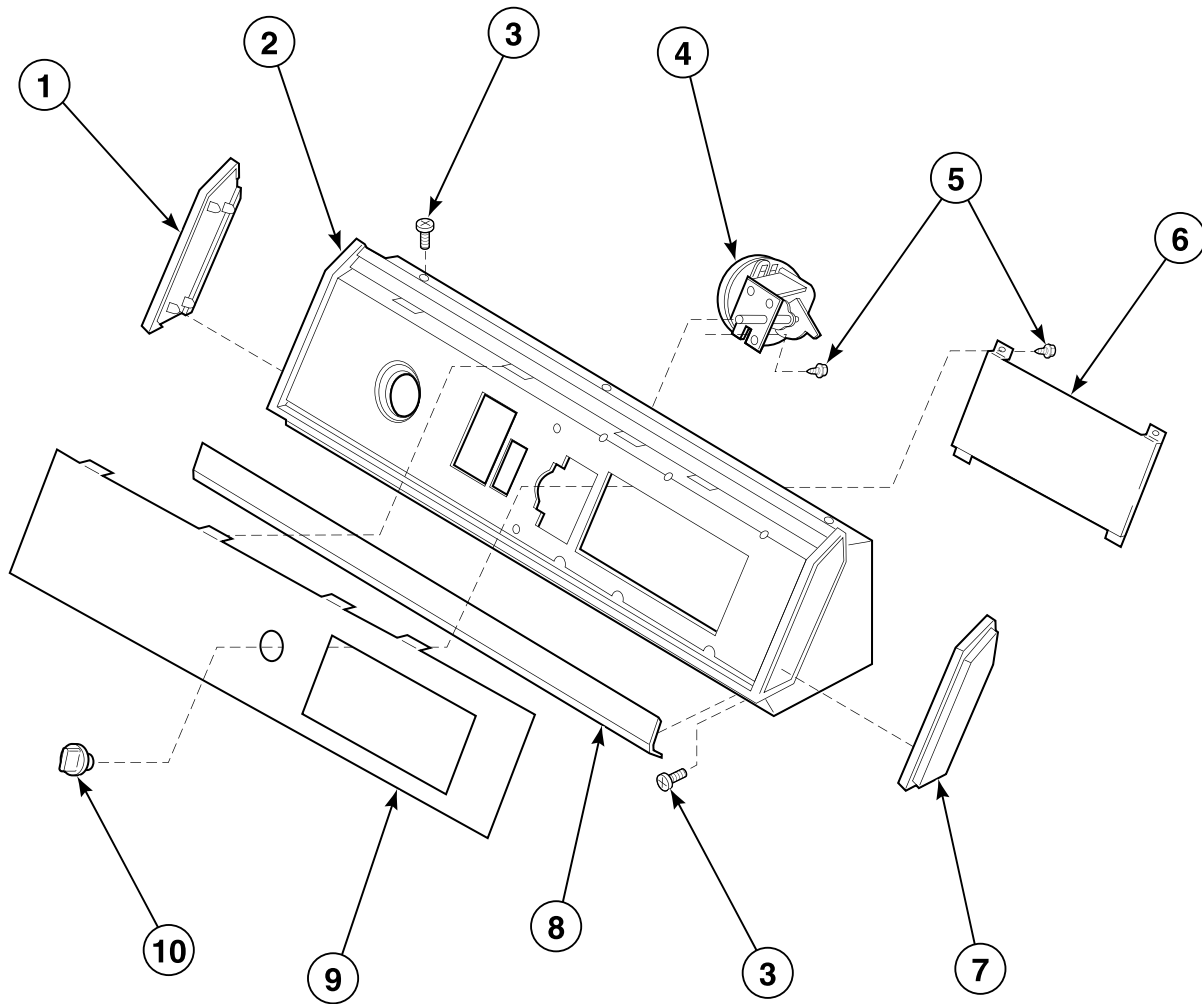


W170P_36313

AWM2 P12

Graphic Panel, Control Hood and Controls (Drawing 11 of 12)

Model UWE993*-1102

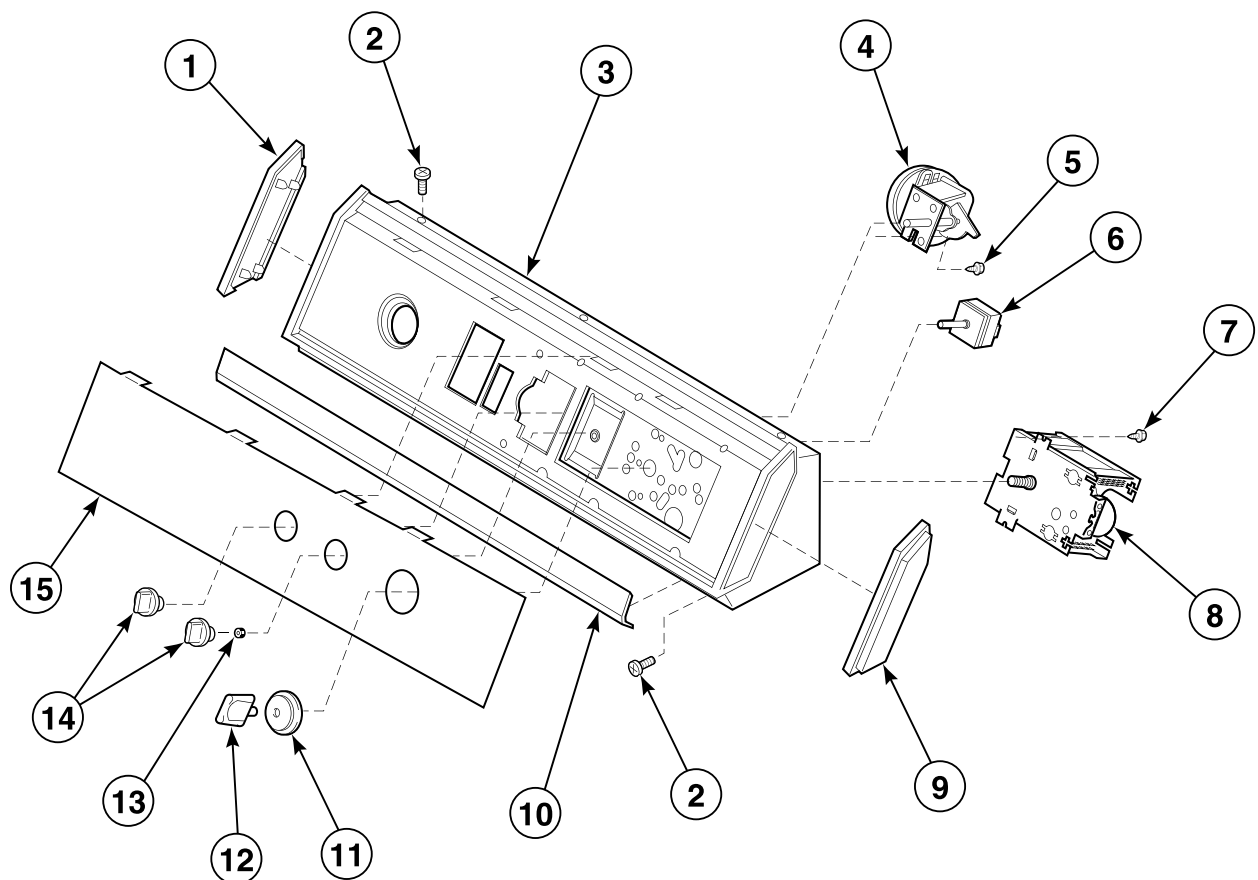


W188P_36313

AWM2 P13

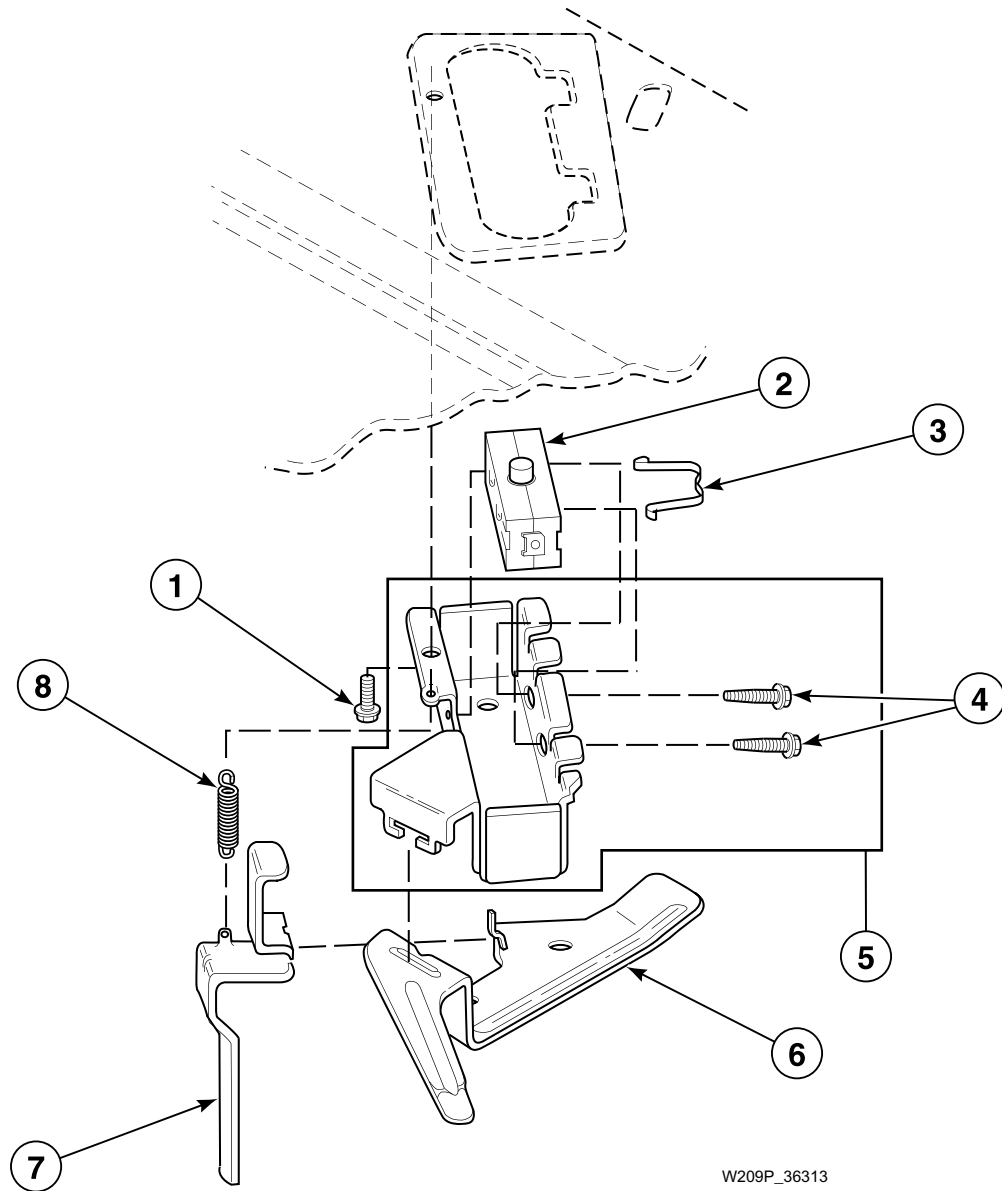
Graphic Panel, Control Hood and Controls (Drawing 12 of 12)

Models UWM392*-1102 and UWM593*-1102



W172P_36313

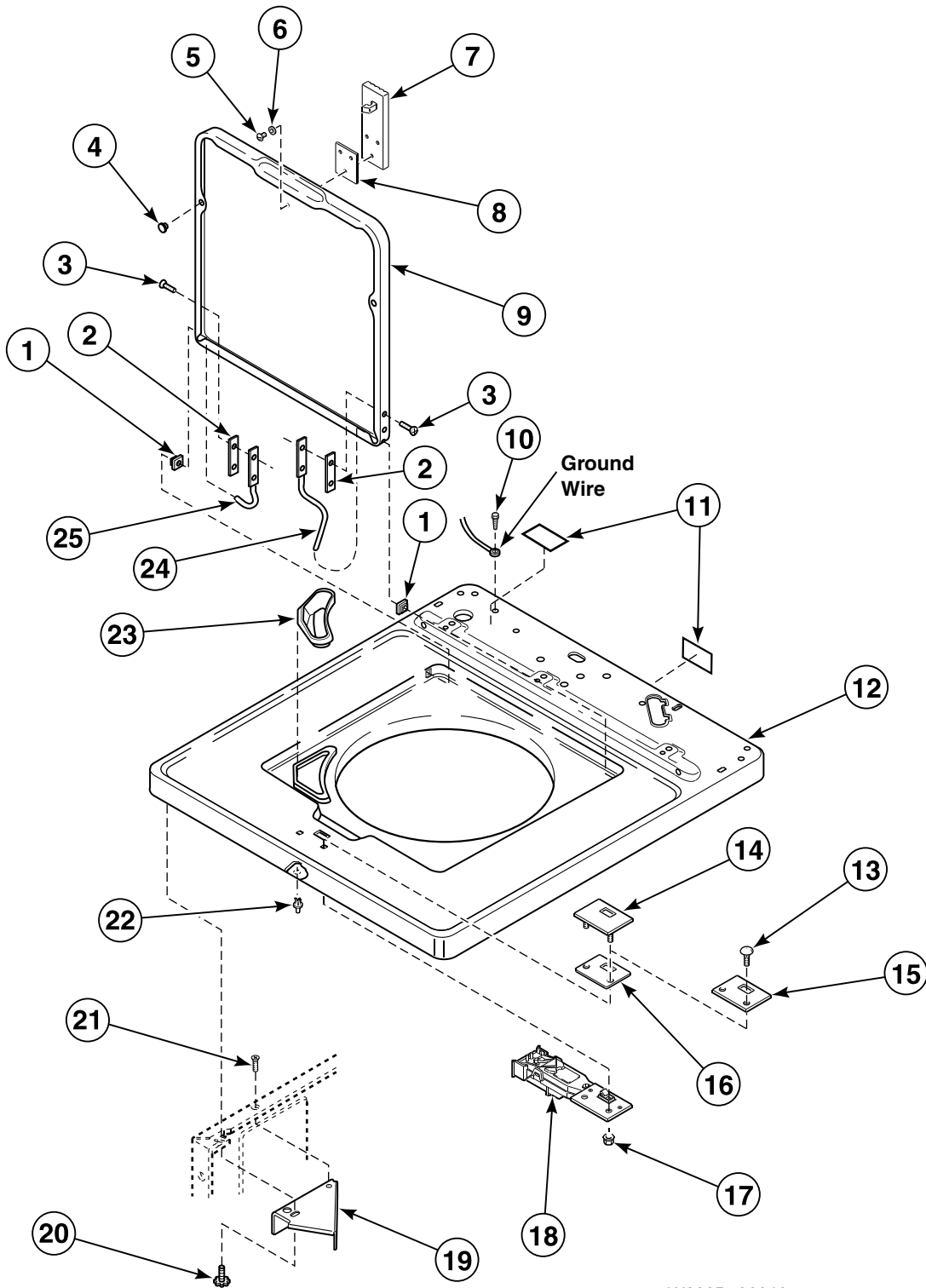
Out-of-Balance Switch



W209P_36313

Cabinet Top and Loading Door

Models AWM393*-3059, AWM393*23059, AWM393*23069, NWM393*-3059,
ZWM372*-3059, ZWM373*-3059 and ZWM373*-3069

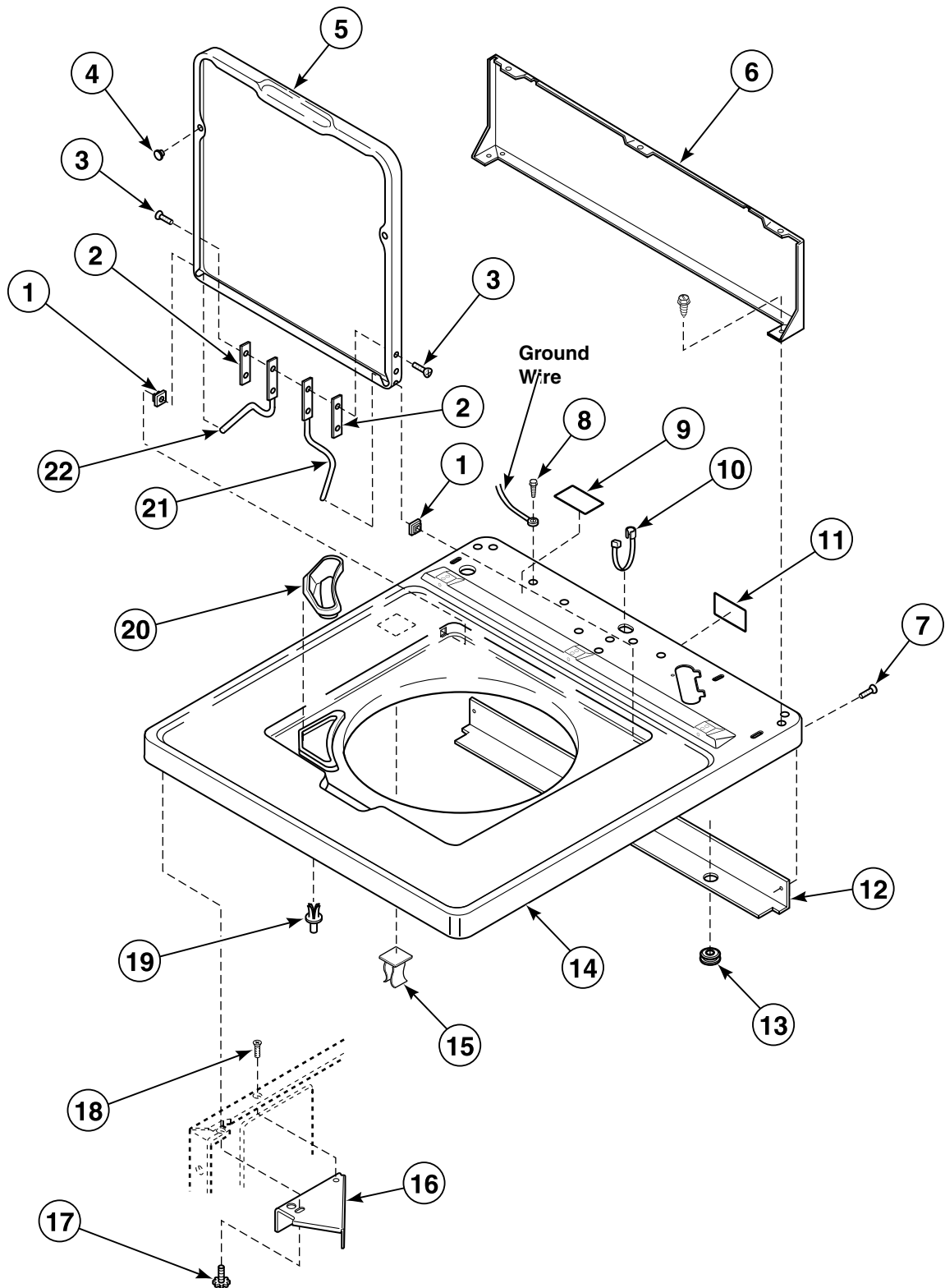


W283P_36313

AWM2 P16

Cabinet Top, Loading Door and Control Hood Rear Panel

All Models Except AWM393*-3059, AWM393*23059, AWM393*23069, NWM393*-3059,
ZWM372*-3059, ZWM373*-3059 and ZWM373*-3069

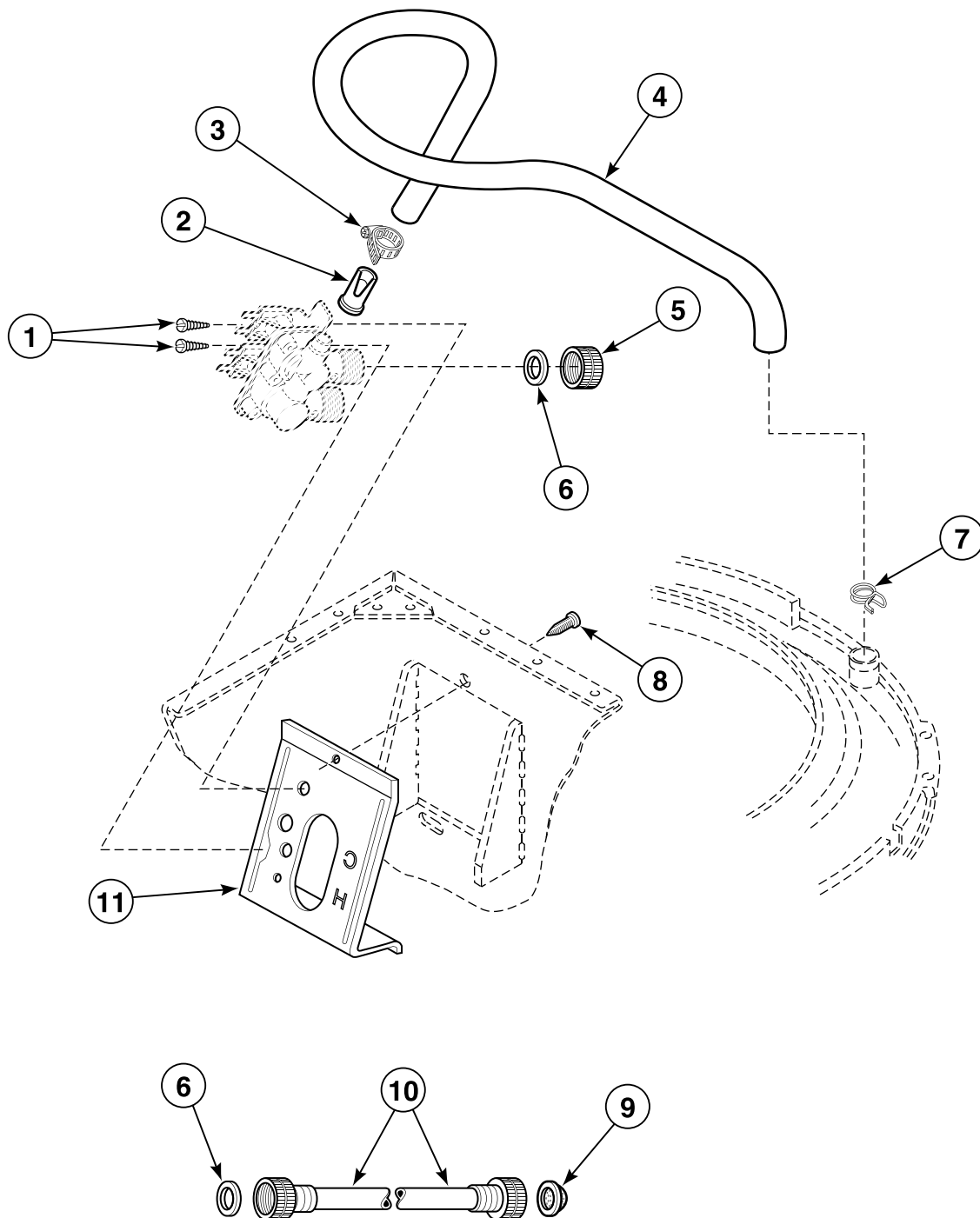


W282P_36313

AWM2 P17

© Copyright, Alliance Laundry Systems LLC – DO NOT COPY or TRANSMIT

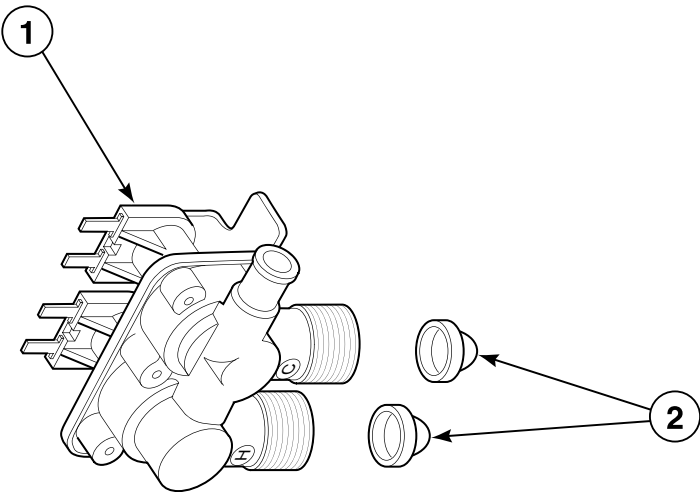
Inlet Hose, Fill Hose and Mixing Valve Mounting Bracket



W180P_36313

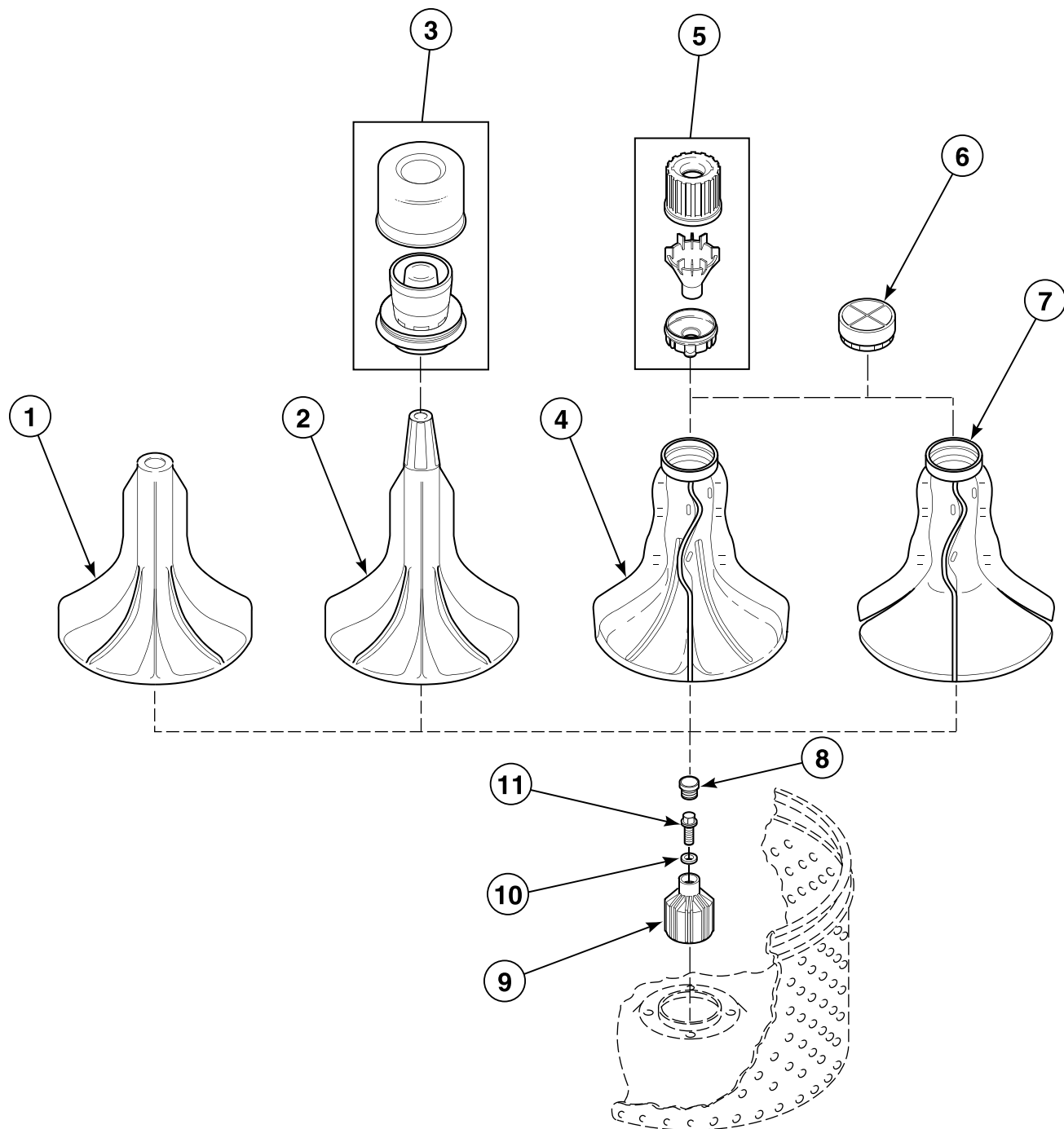
AWM2 P18

Mixing Valve Assembly



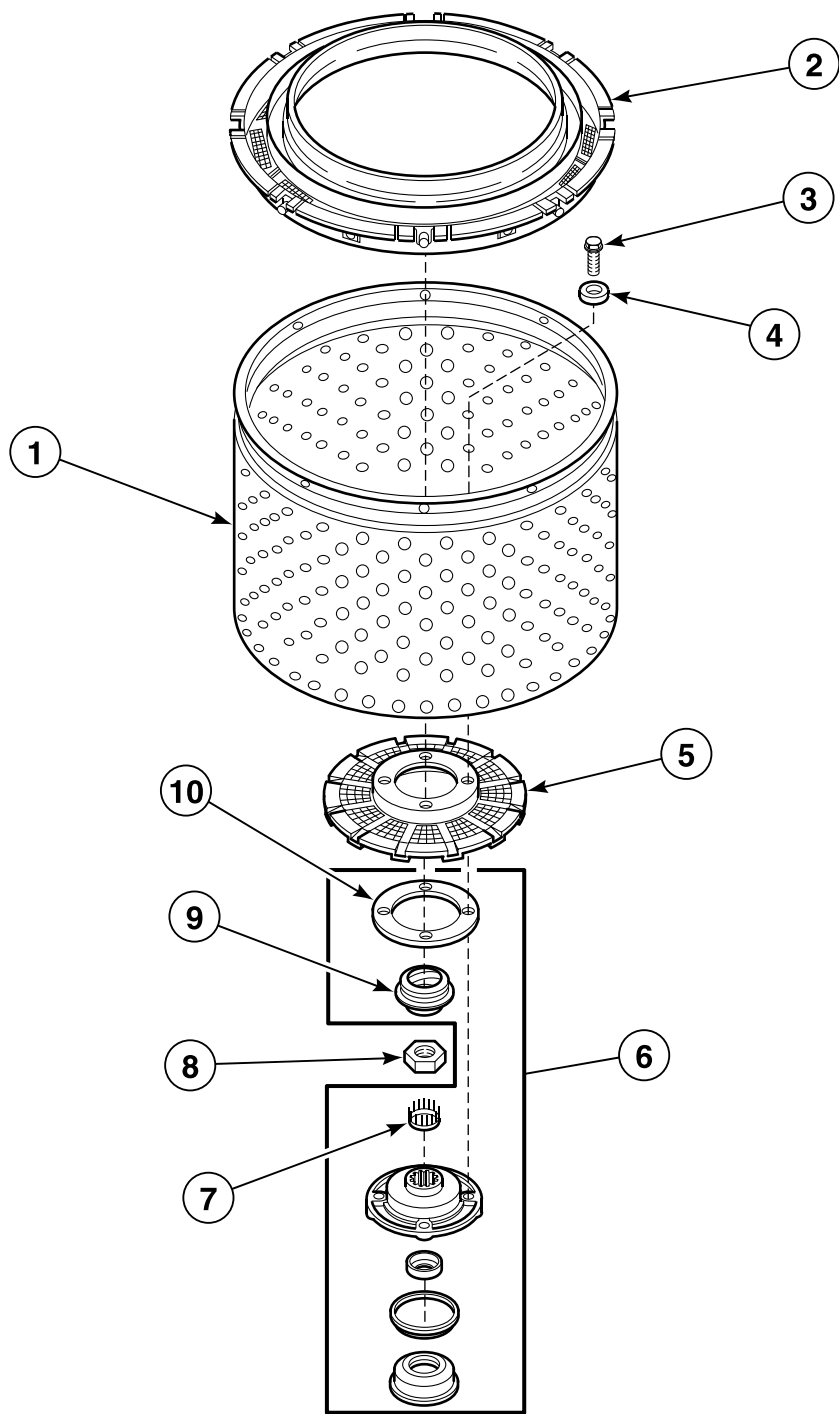
W284P_36313

Agitator and Drive Bell



W285P_36313

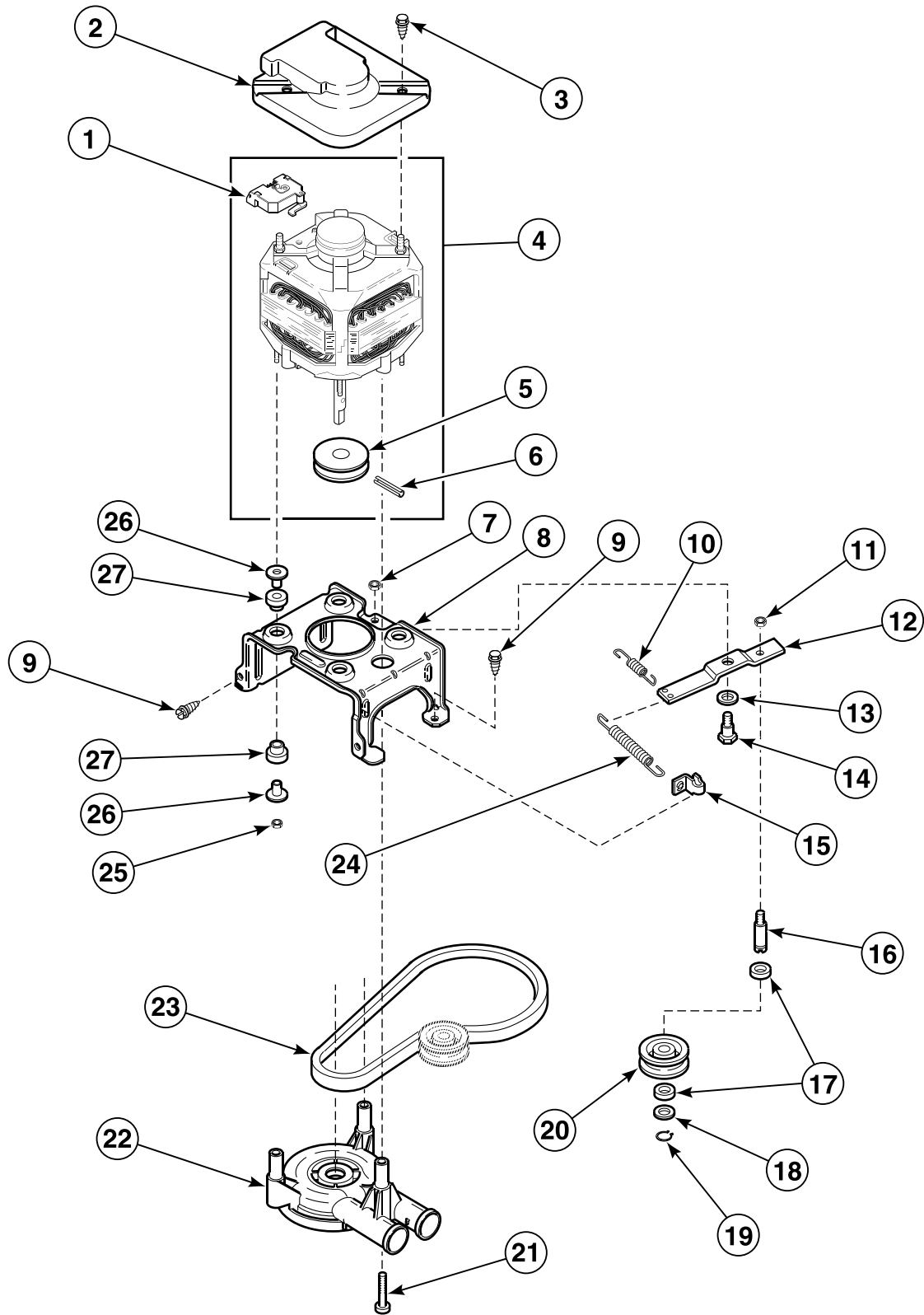
Clothes Guard, Washtub, Lint Filter and Hub



W191P_36313

Motor, Mounting Bracket, Belt, Pump and Idler Assembly

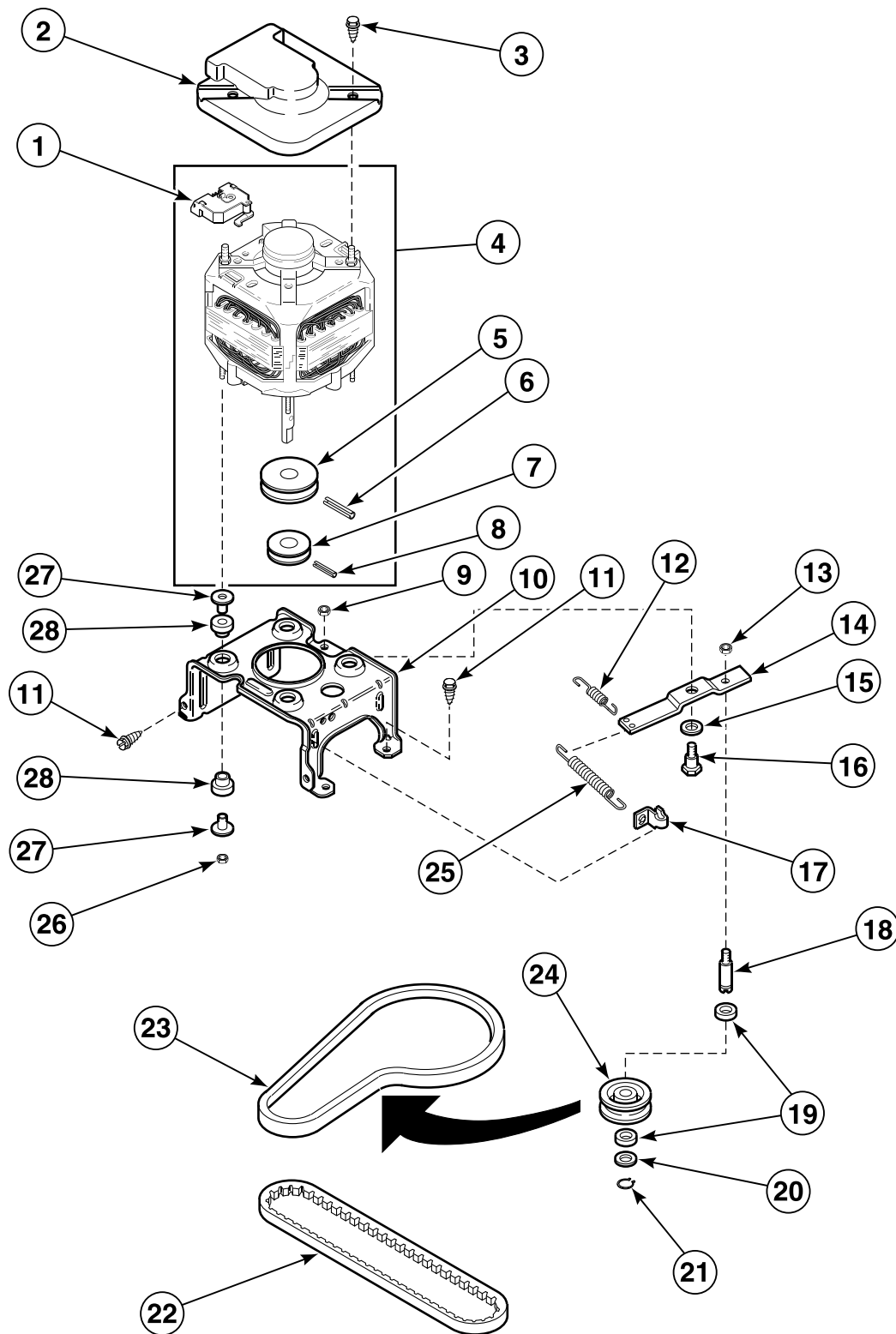
Washers Equipped with Direct Drive Pump



W229P_36313

Motor, Mounting Bracket, Belts and Idler Assembly

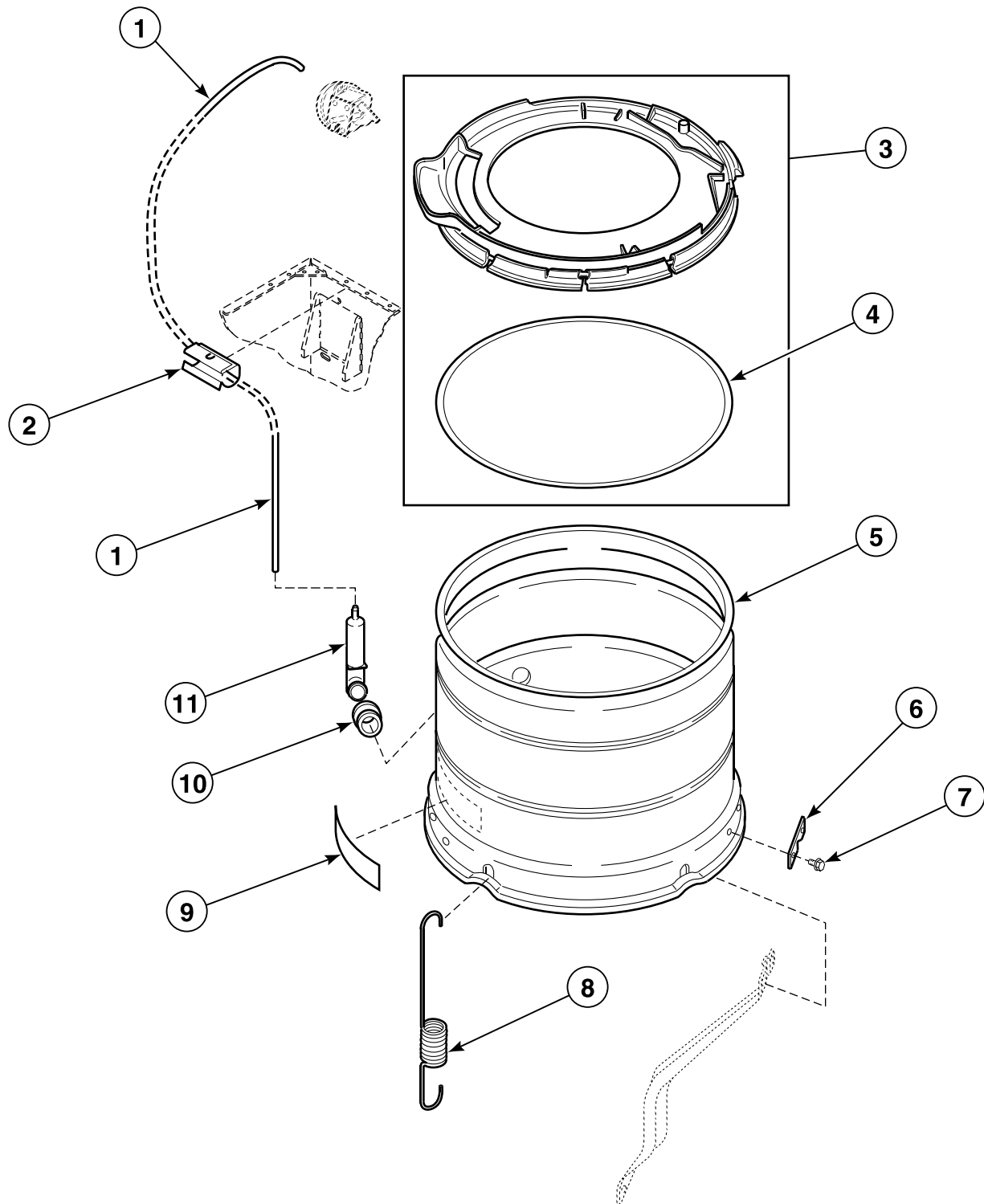
Washers Equipped with Belt Driven Pump or Electric Drain Pump



W230P_36313

AWM2 P23

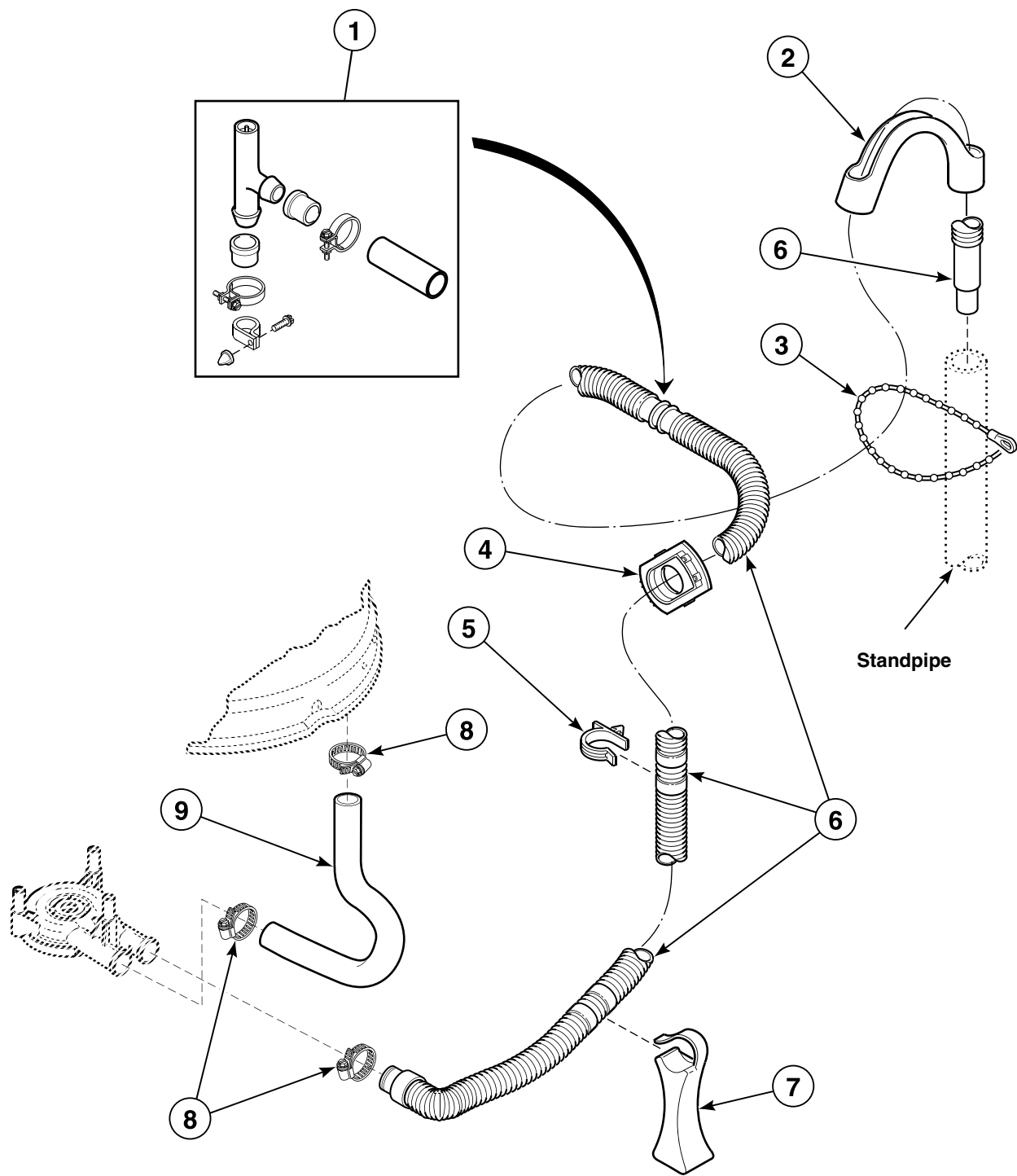
Outer Tub, Cover and Pressure Hose



W267P_36313

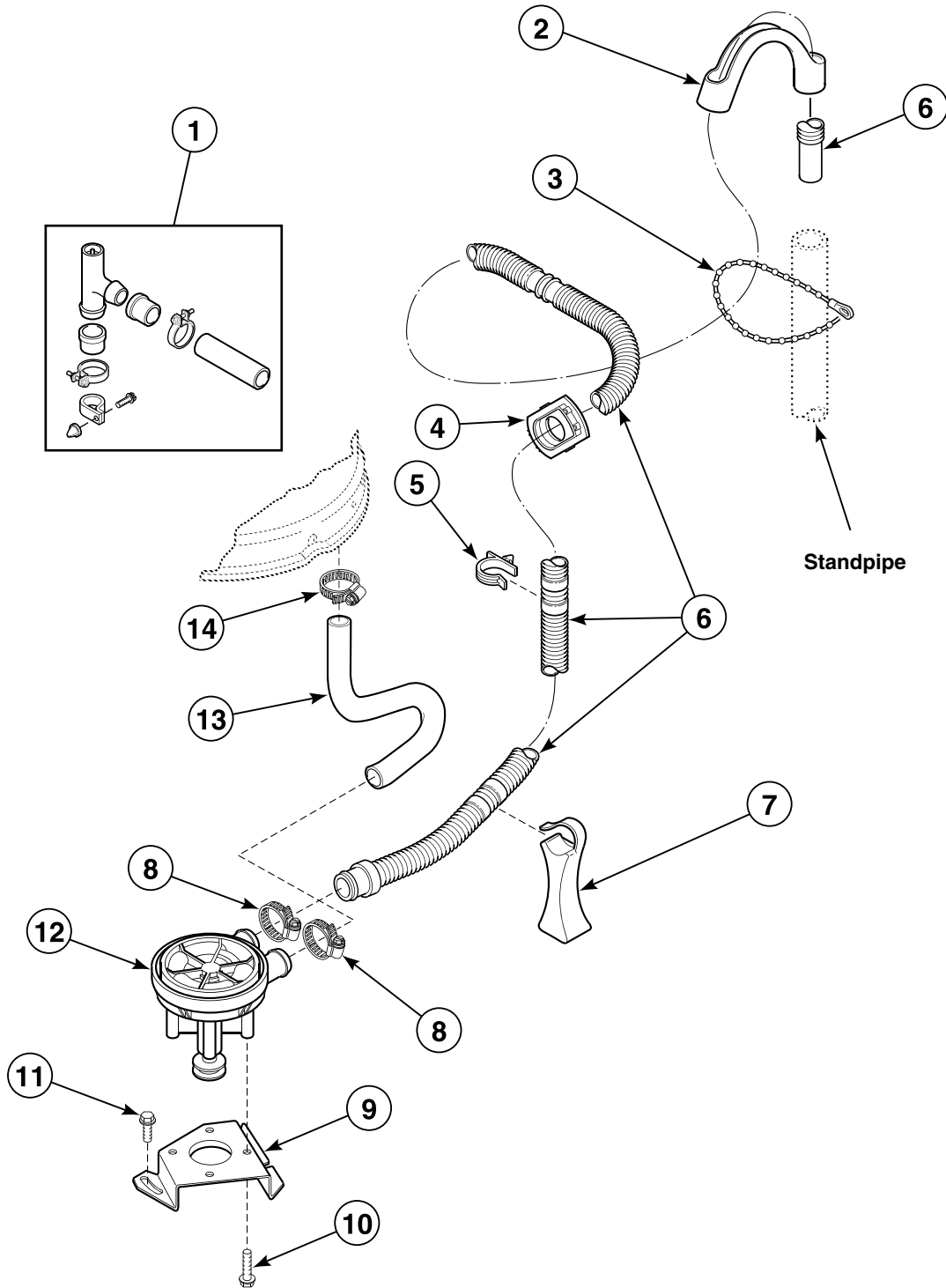
AWM2 P24

Direct Drive Pump with Plastic Drain Hose and Siphon Break Kit



W286P_36313

Belt Drive Pump with Plastic Drain Hose and Siphon Break Kit

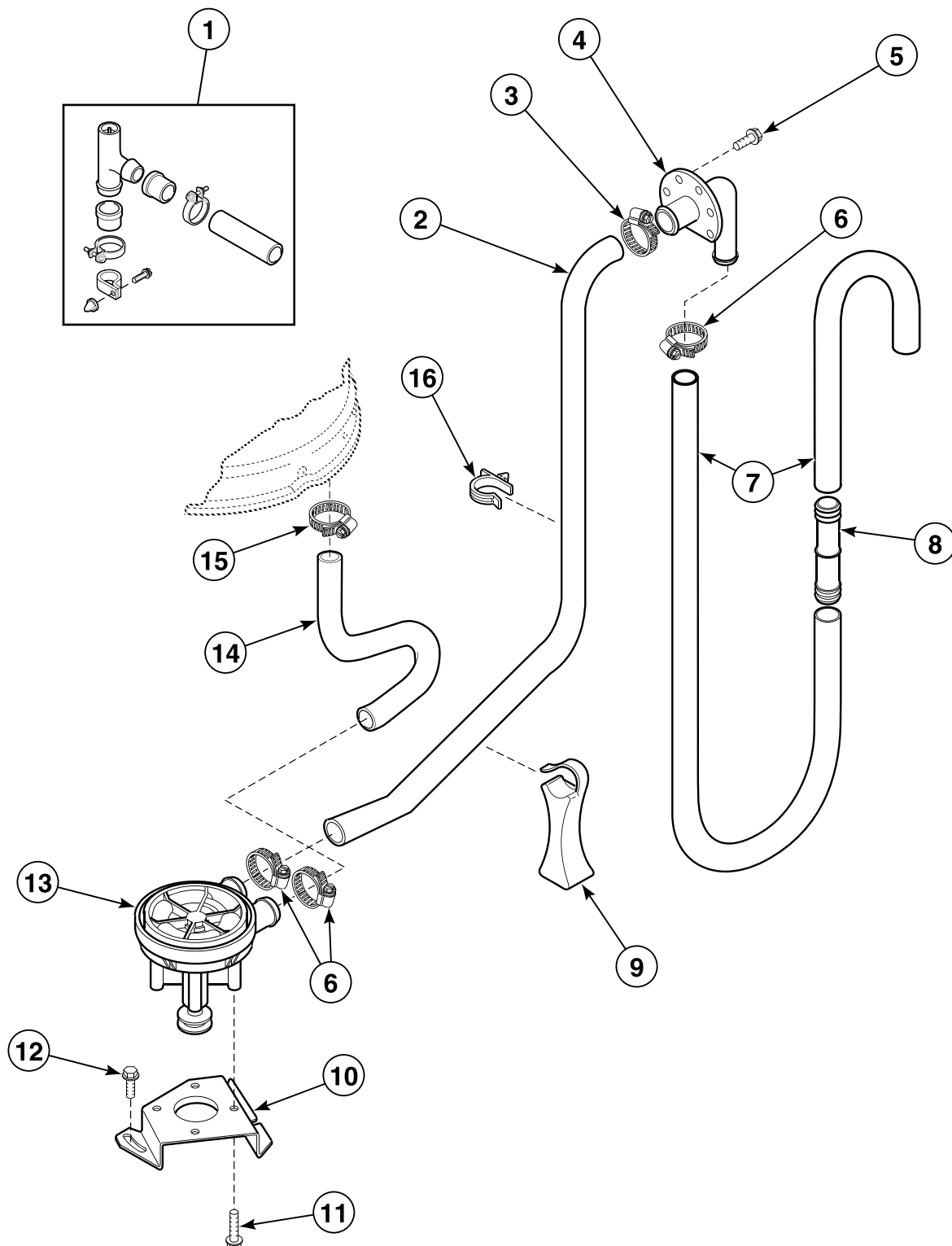


W166P__36313

AWM2 P26

Copyright, Alliance Laundry Systems LLC – DO NOT COPY or TRANSMIT

Belt Drive Pump with Rubber Drain Hose and Siphon Break Kit

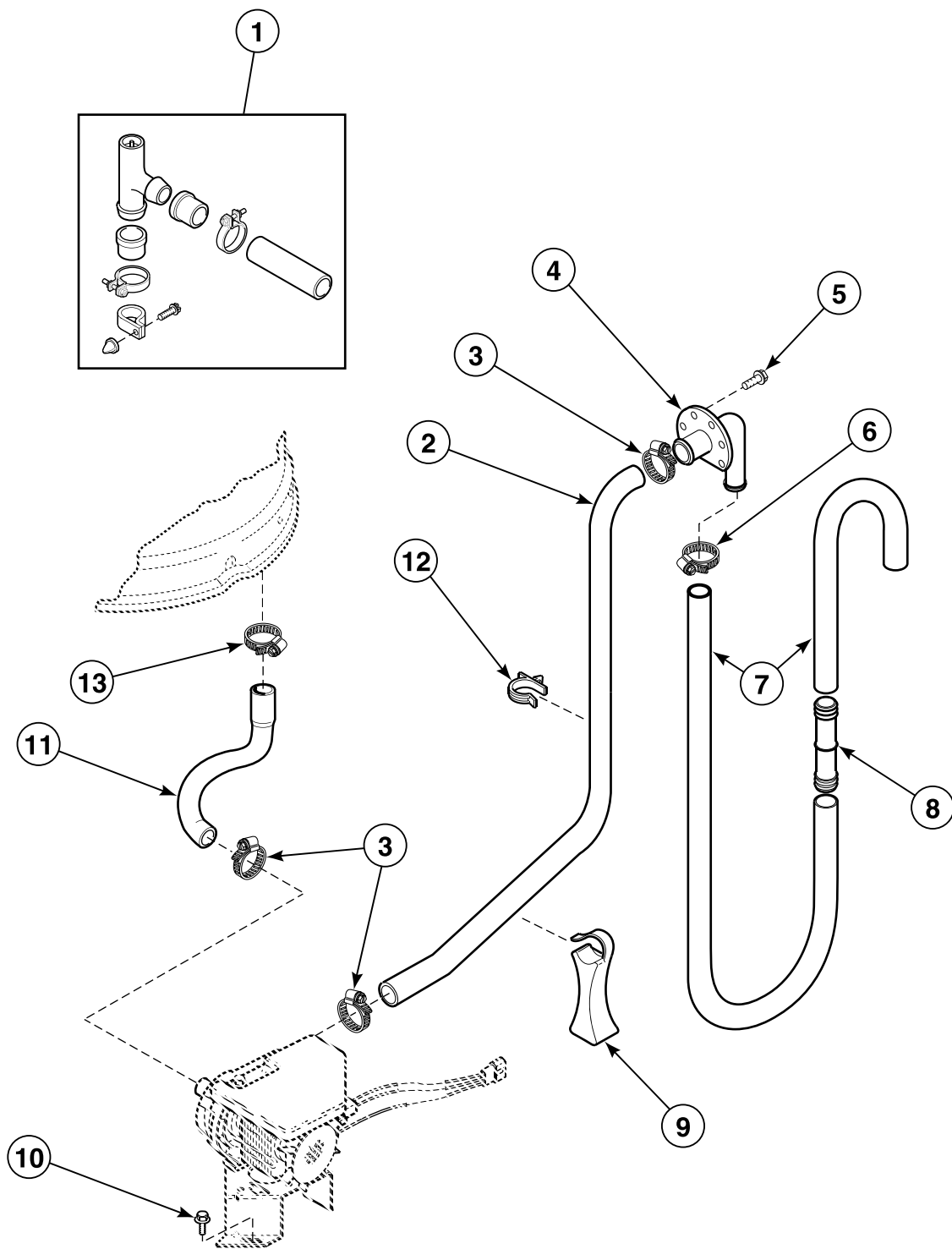


W192P__36313

AWM2 P27

Copyright, Alliance Laundry Systems LLC – DO NOT COPY or TRANSMIT

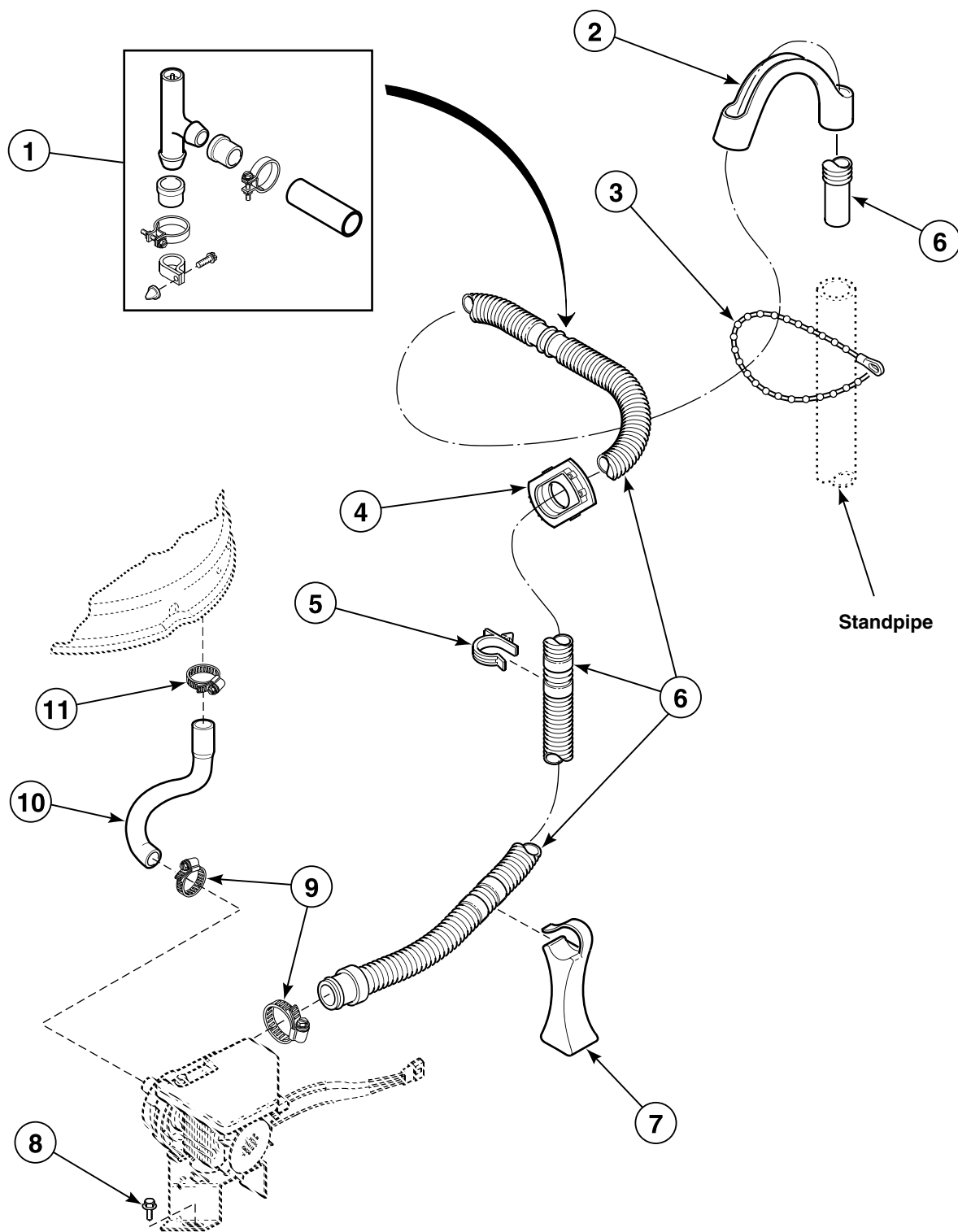
Electric Drain Pump with Rubber Drain Hose and Siphon Break Kit



W287P_36313

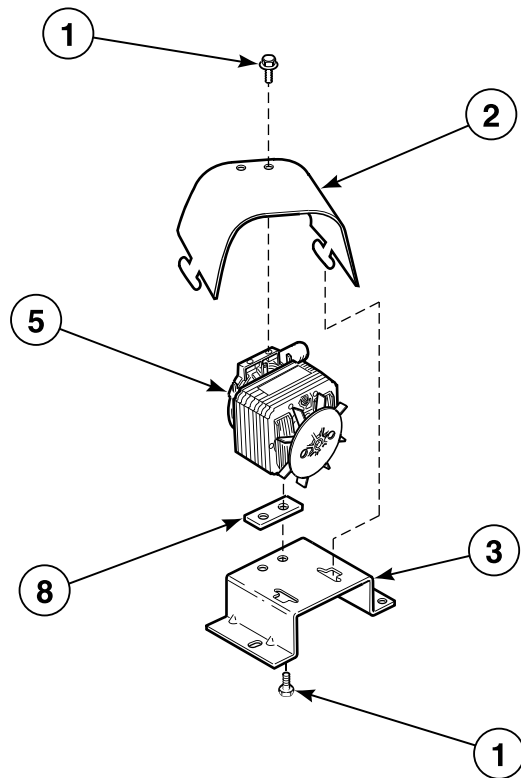
AWM2 P28

Electric Drain Pump with Plastic Drain Hose and Siphon Break Kit

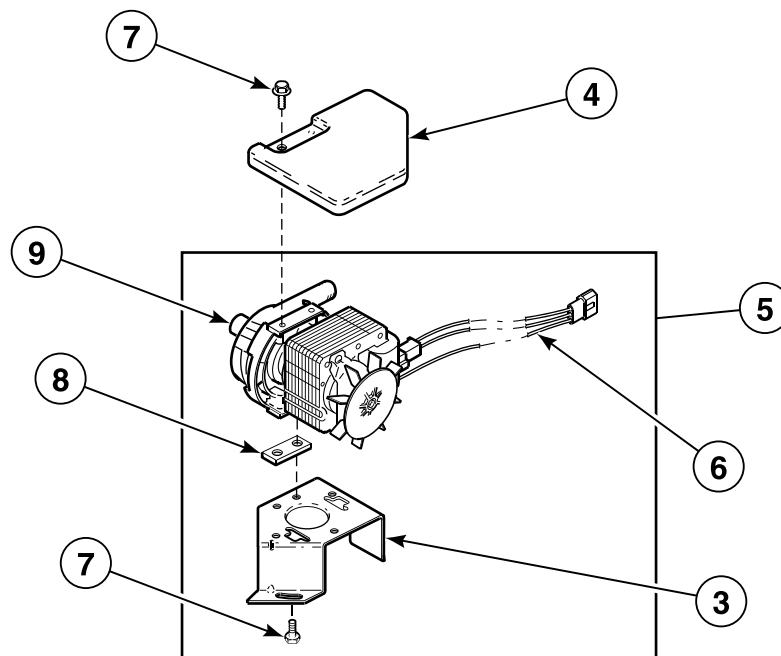


W288P_36313

Electric Drain Pump



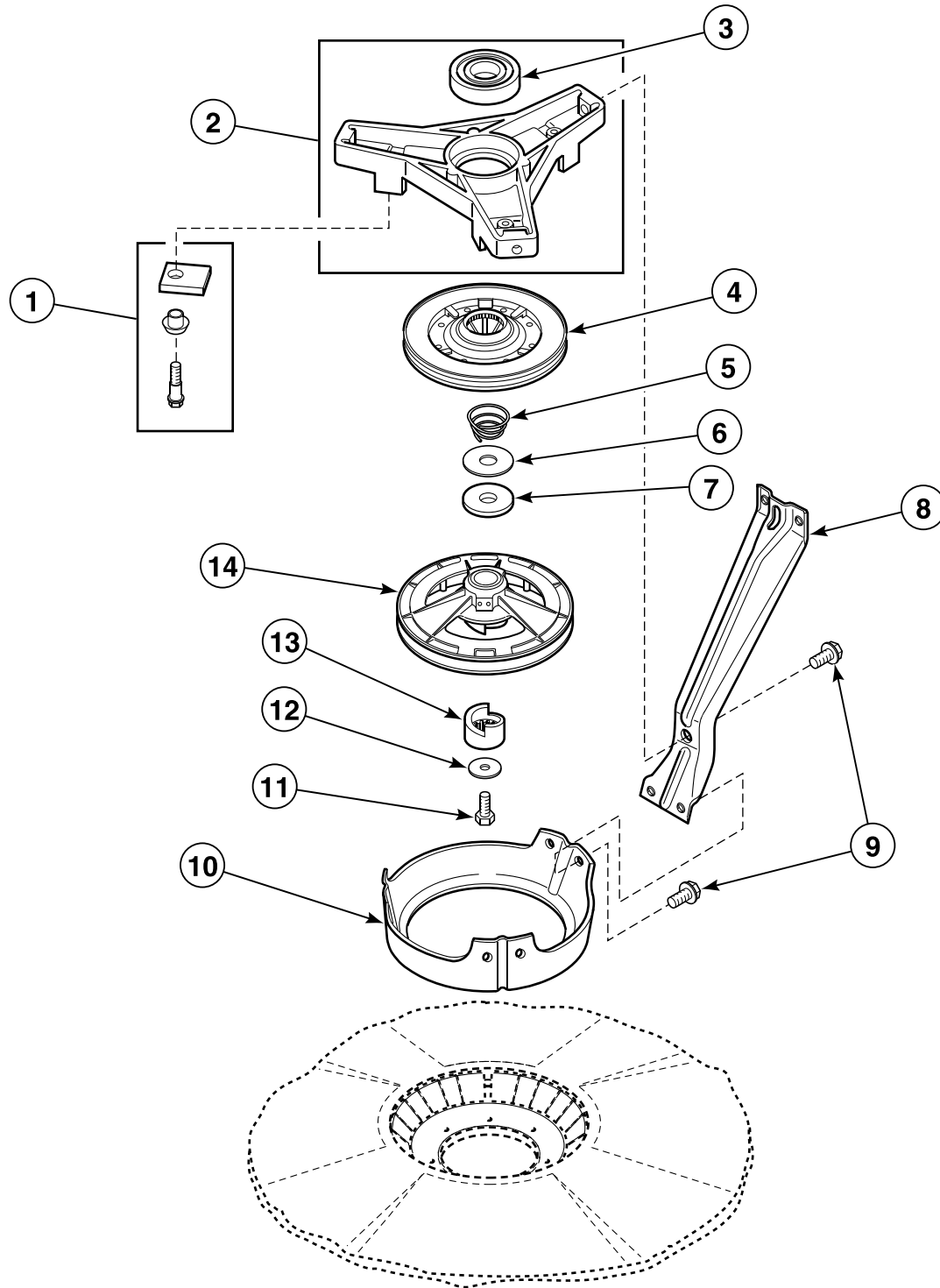
Old Style



New Style

W289P_36313

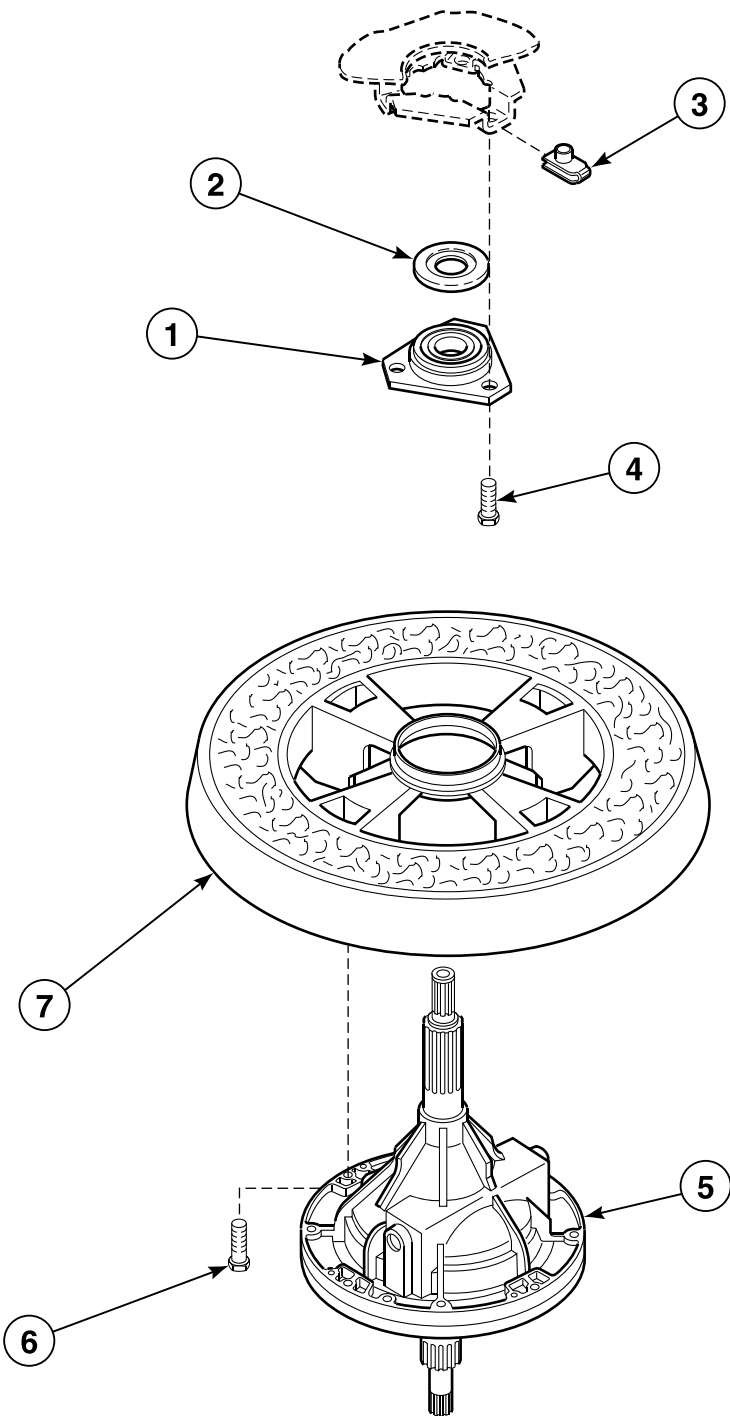
Bearing Housing, Brake, Pulley and Pivot Dome



W164P_36313

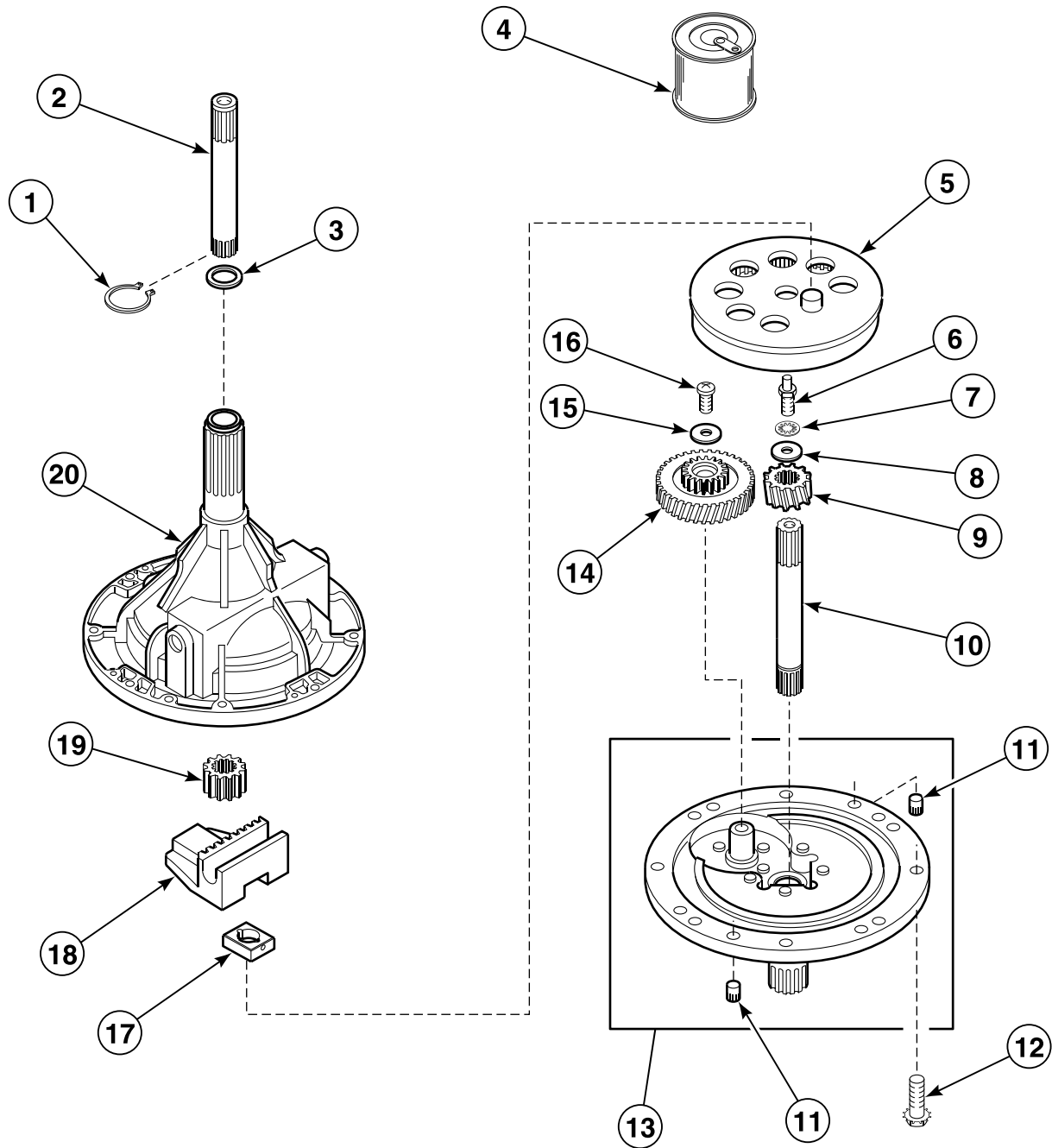
AWM2 P31

Transmission Assembly and Balance Ring



W290P_36313

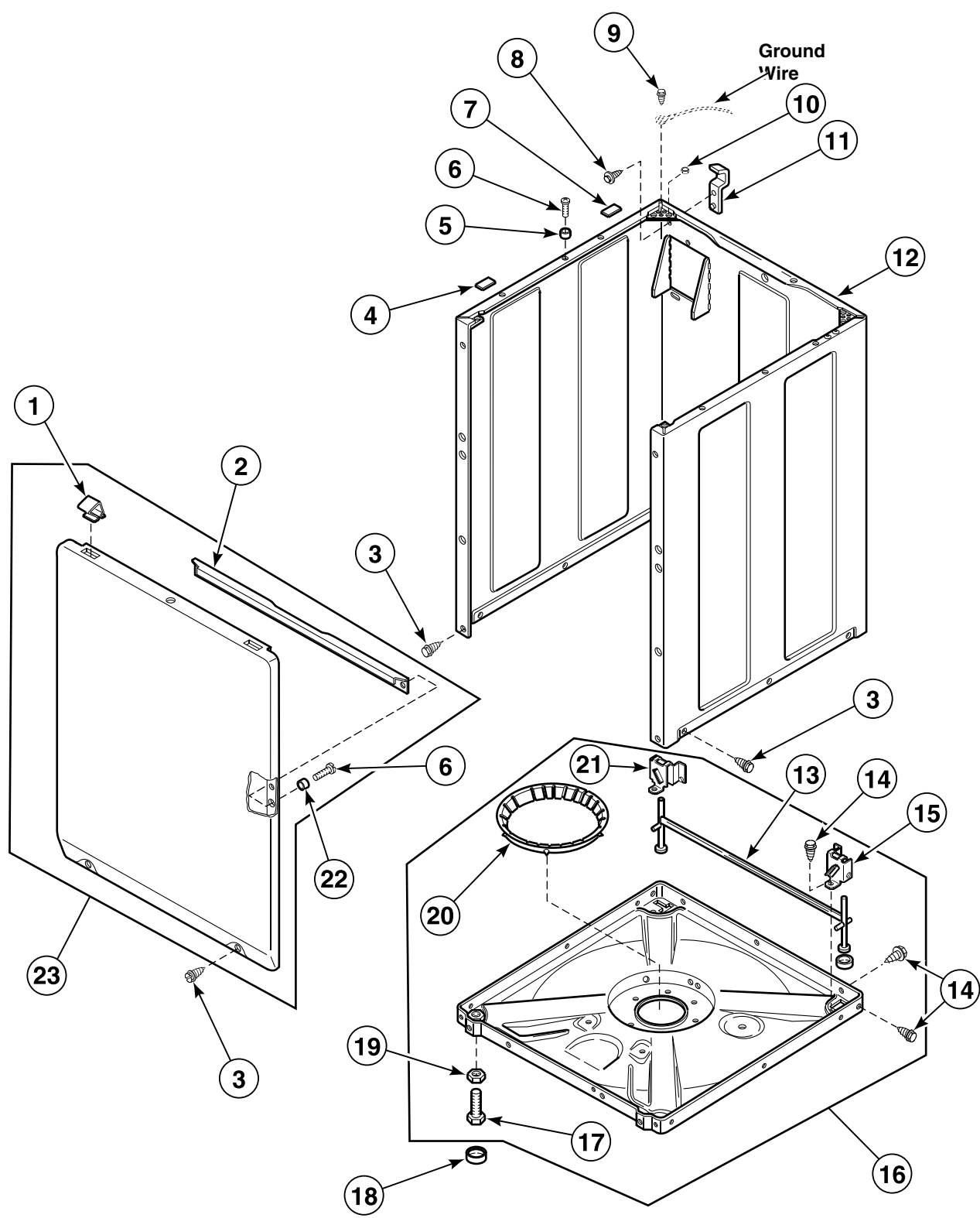
34526P Transmission Assembly



W157P_36313

AWM2 P33

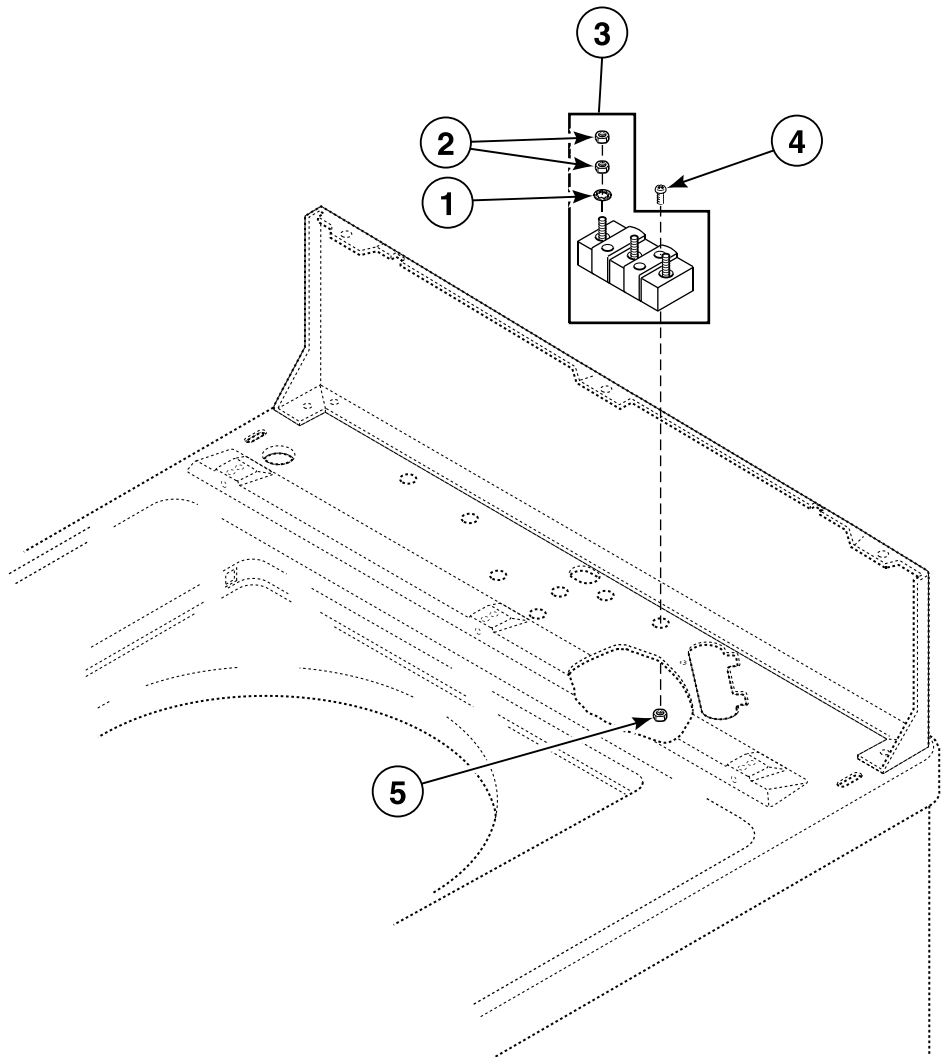
Front Panel, Base and Cabinet Assembly



W184P__36313

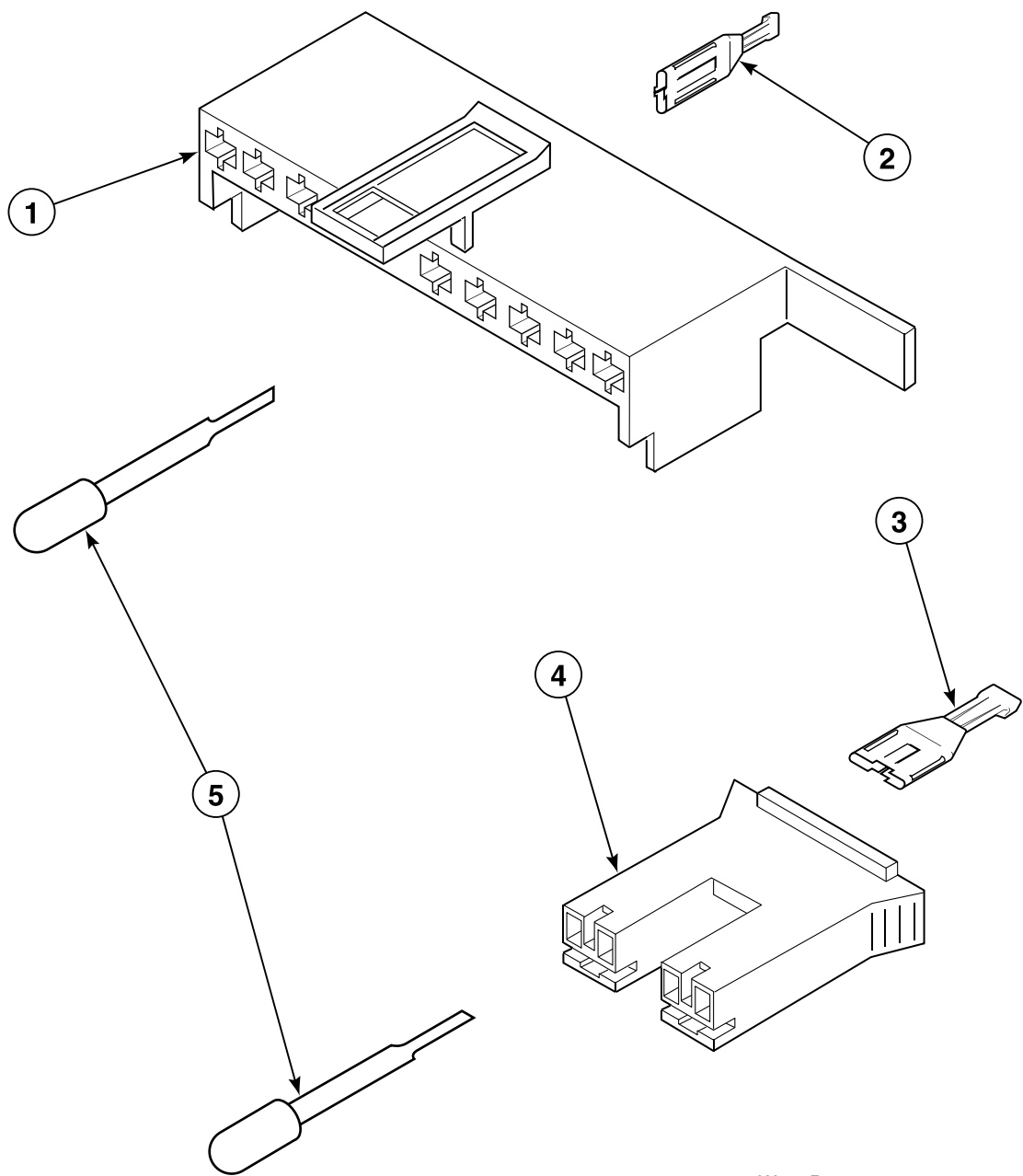
AWM2 P34

Terminal Block and Hardware



W291P_36313

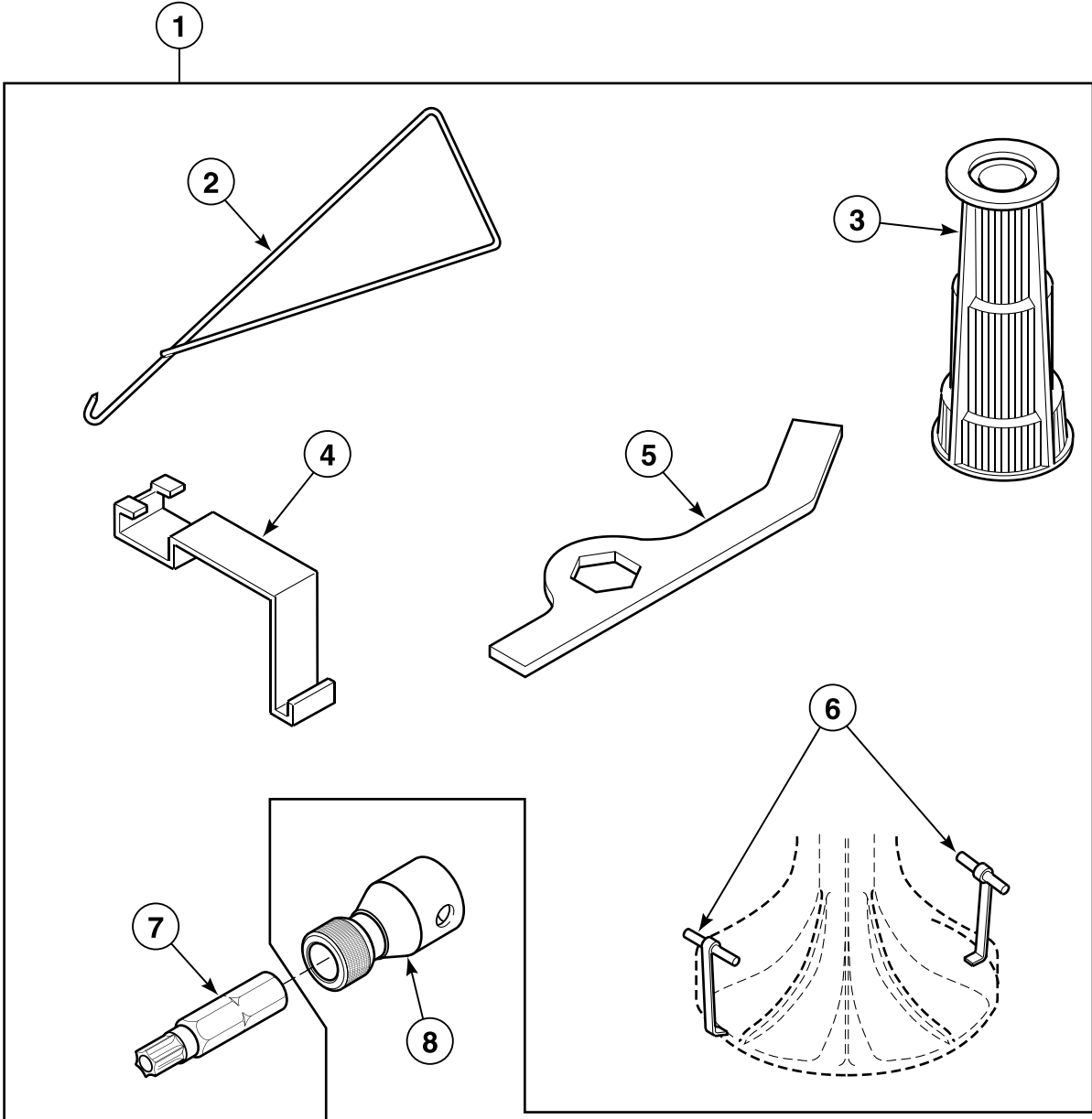
Connection Blocks, Terminals and Terminal Extractor Tool



W134P_36313

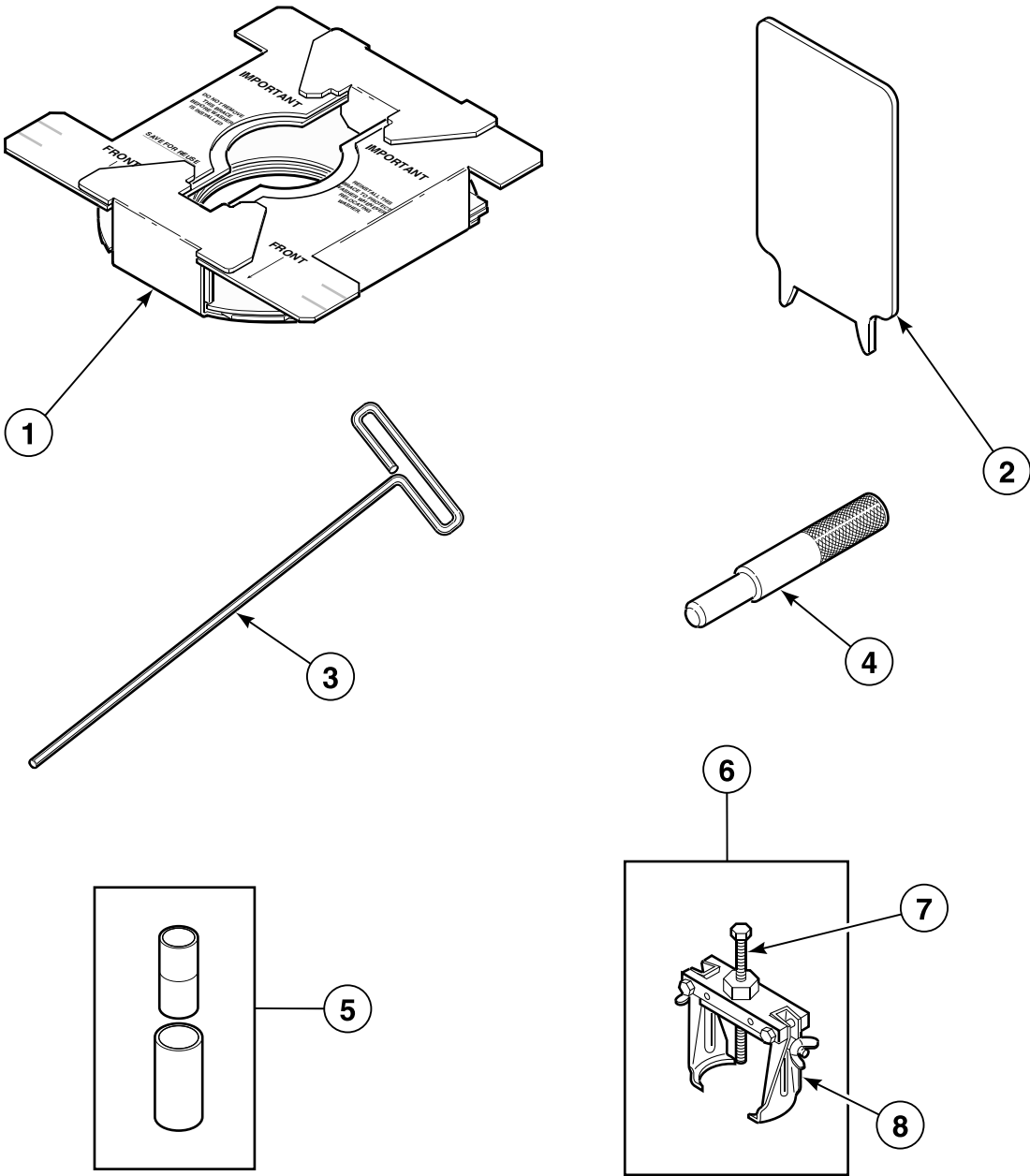
AWM2 P36

Special Tools (Drawing 1 of 2)



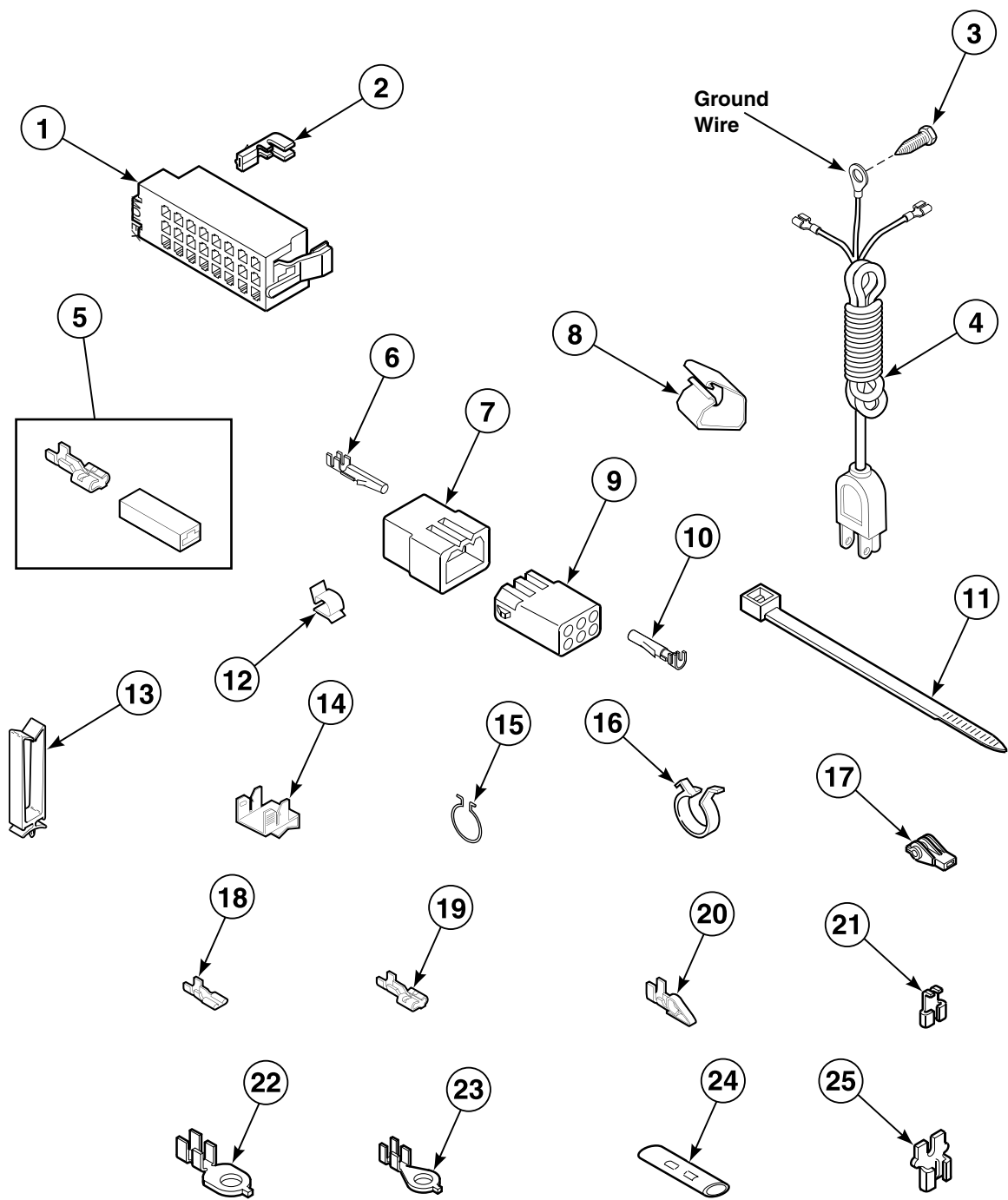
TLW1649P_36313

Special Tools (Drawing 2 of 2)



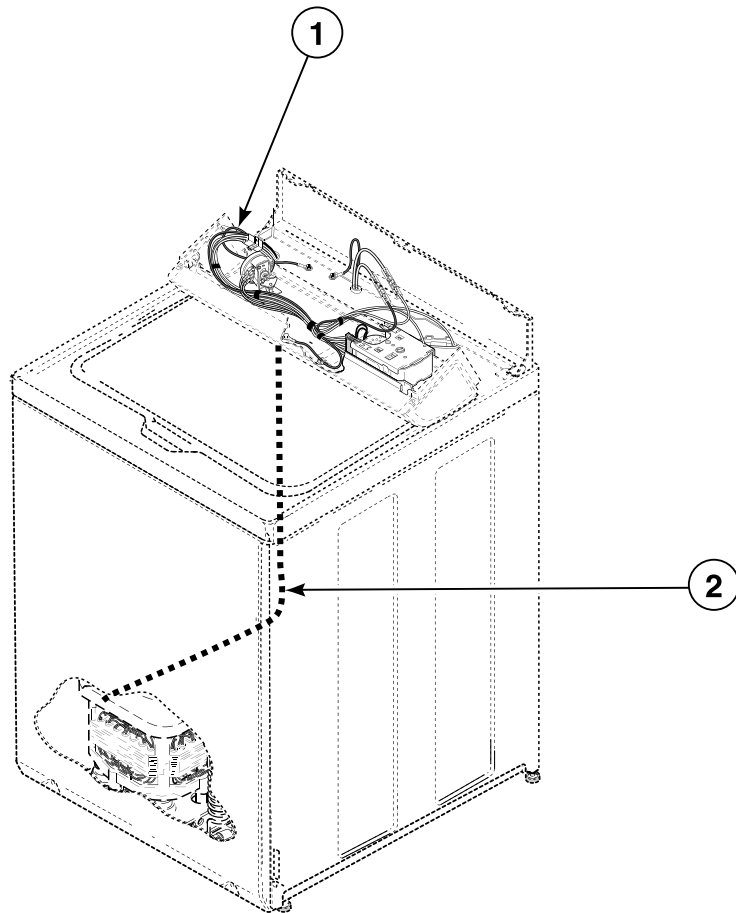
TLW1665P_36313

Power Cord and Terminals



W185P__36313

Wire Harnesses and Wires



TLW1536P_36313

AWM2 P40