

Washer-Extractor CL9163^{Superload II}

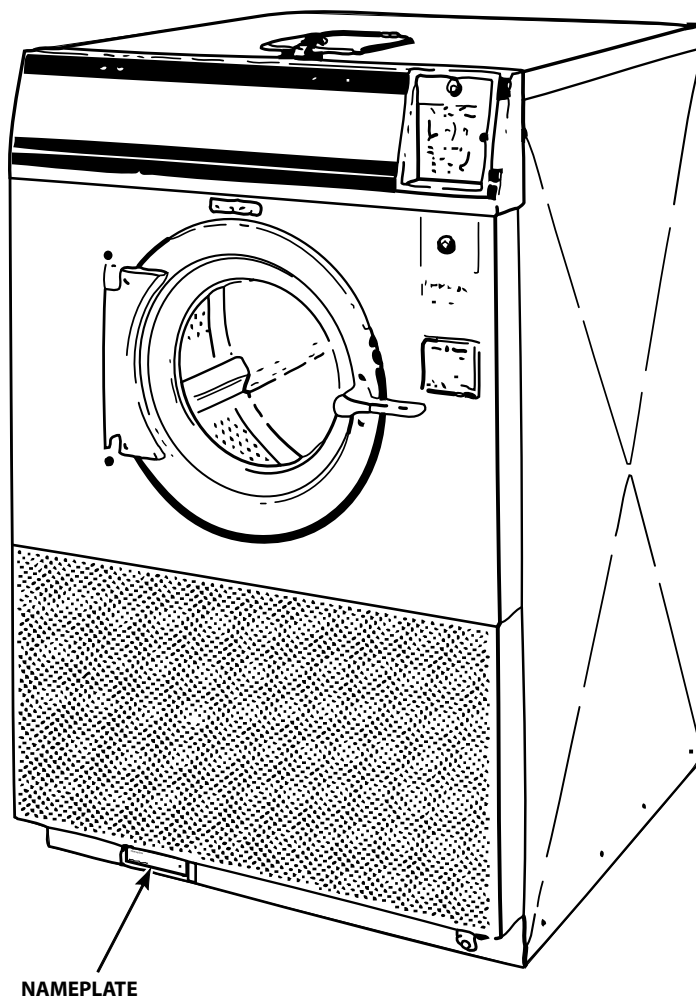
Refer to Page 3 for Model Numbers

Parts Ordering Information

If literature or replacement parts are required, contact the source from whom the machine was purchased or contact Alliance Laundry Systems at for the name and address of the nearest authorized parts distributor.

Nameplate Location

When calling or writing about your product, be sure to mention model and serial numbers. Model and serial numbers are located on nameplate(s) as shown.



SPR45P_81933

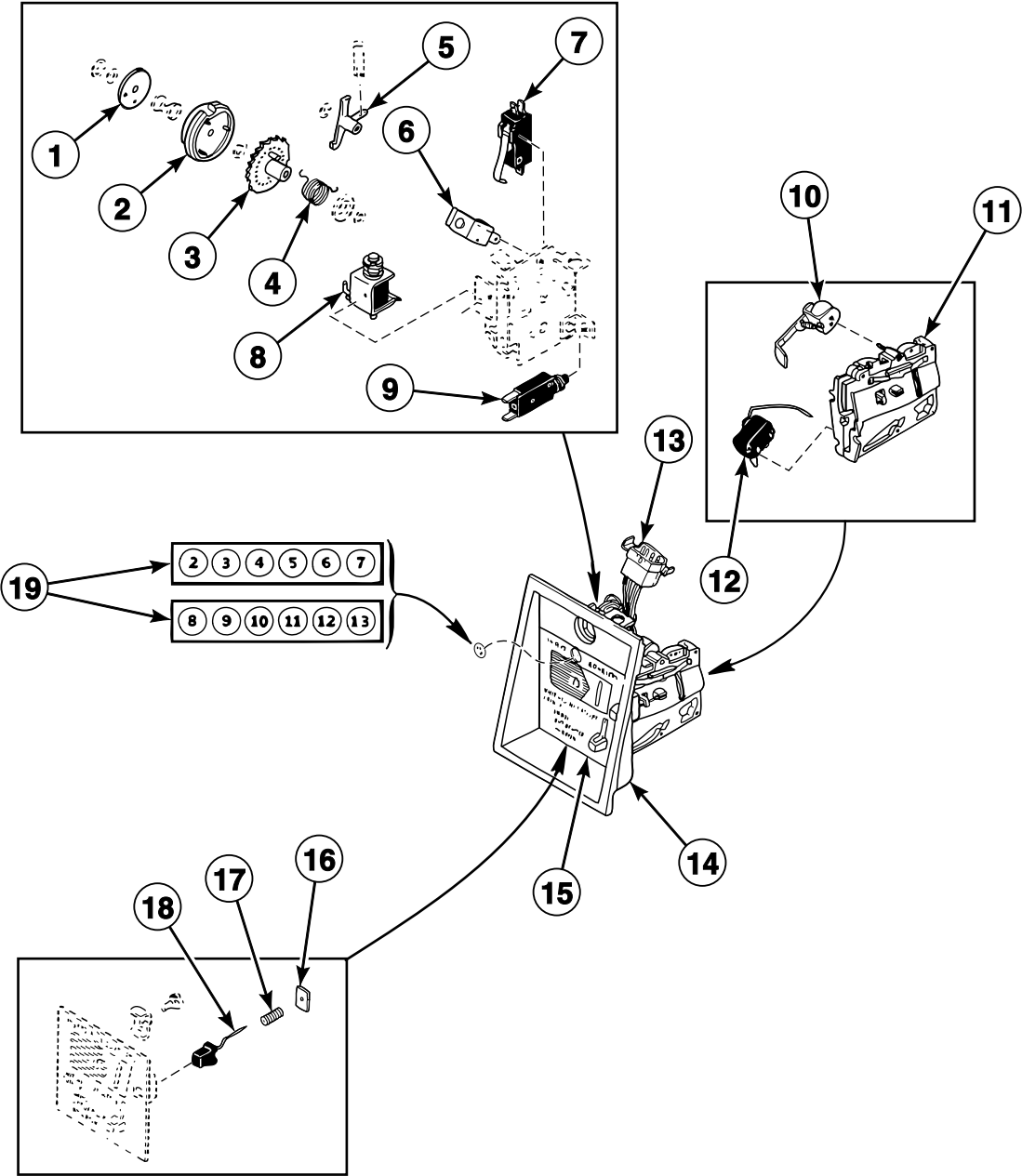
Model Identification

Information in this manual is applicable to these washer-extractor models:

CL9161
CL9163
CL9171
CL9173

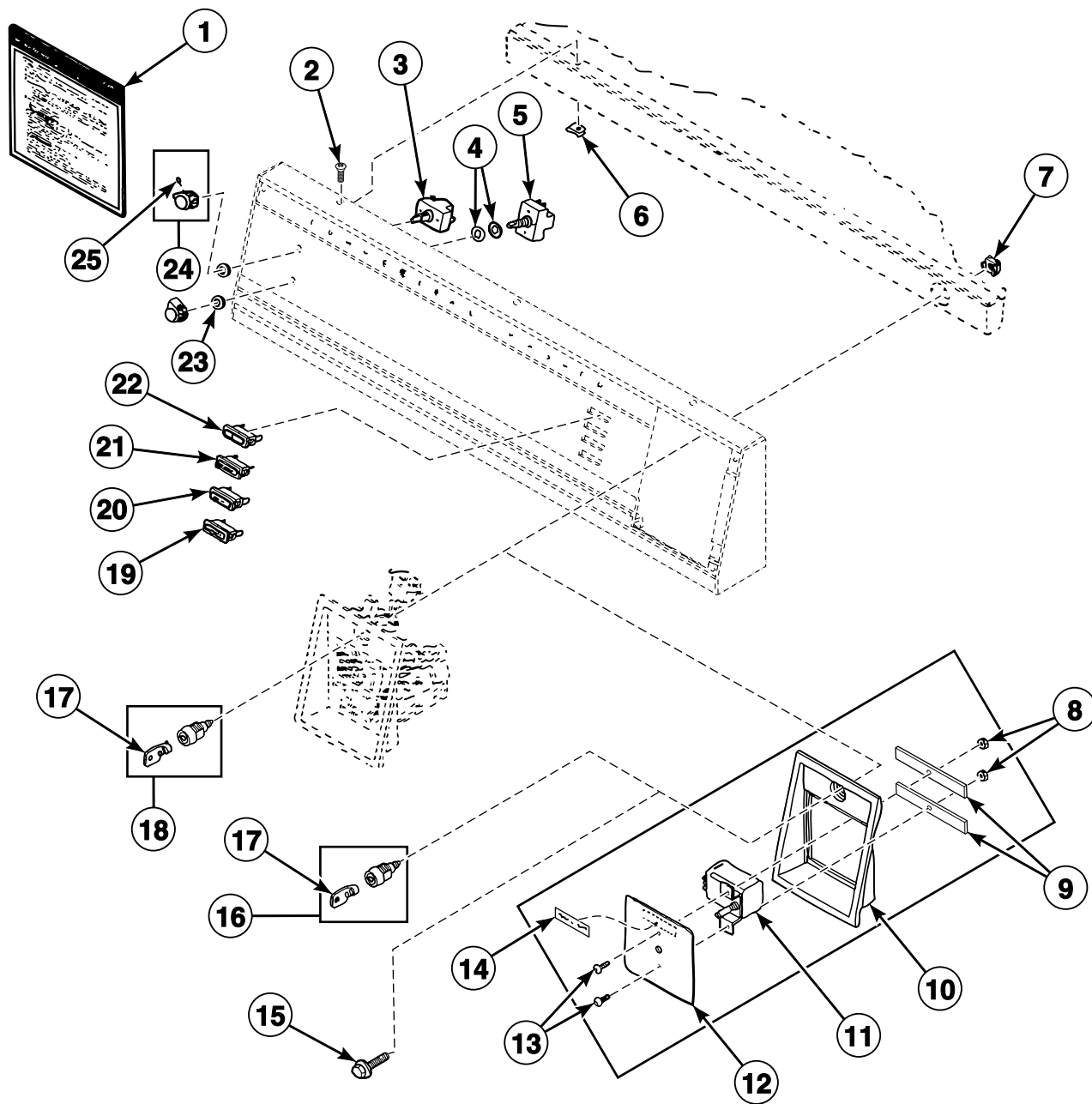
CL9163

Accumulator Coin Drop



SPR46P_81933

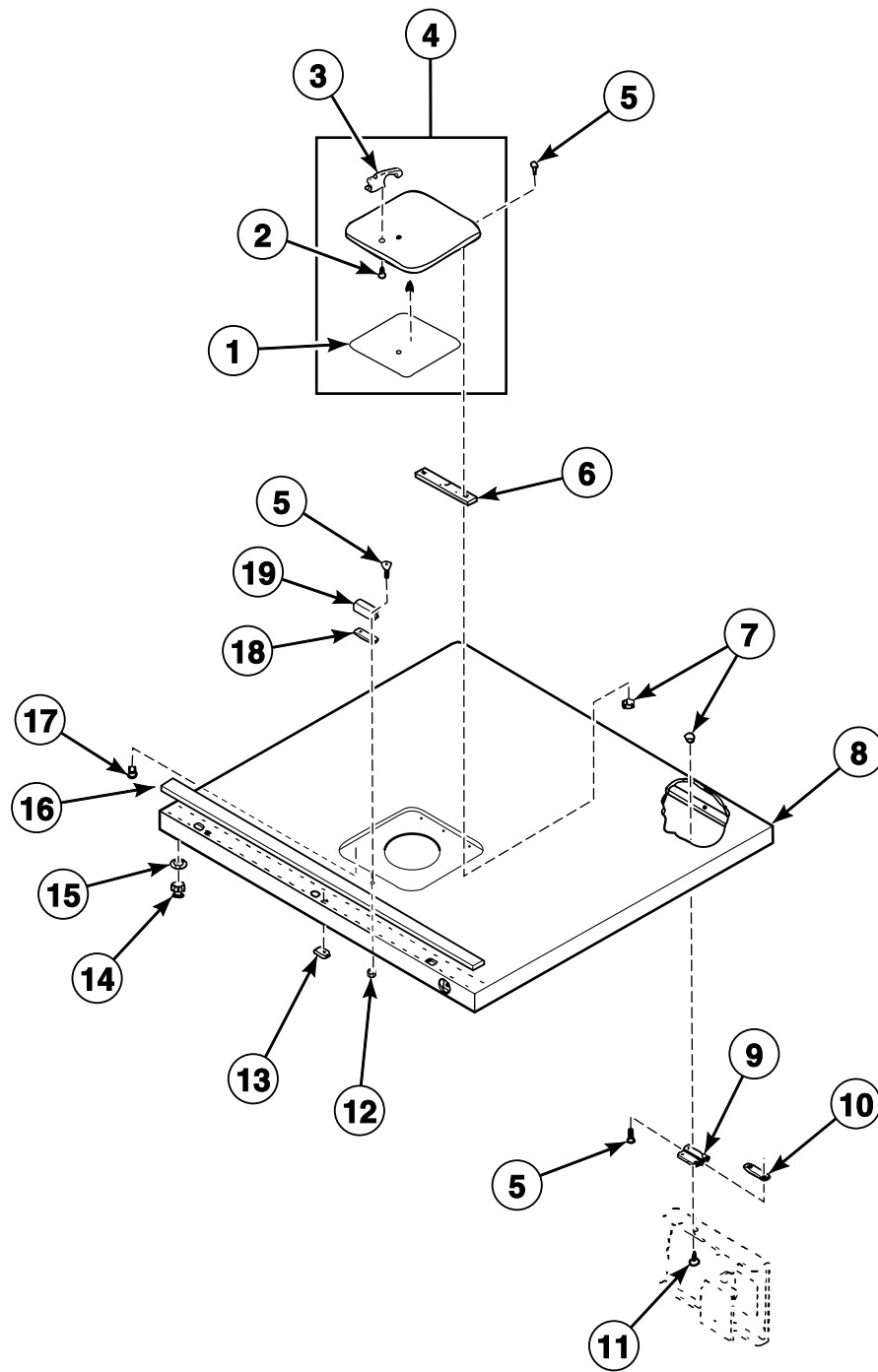
Control Panel, Controls and Operating Instruction Sign



SPR47P_81933

CL9163 P2

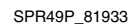
Cabinet Top and Dispenser Door



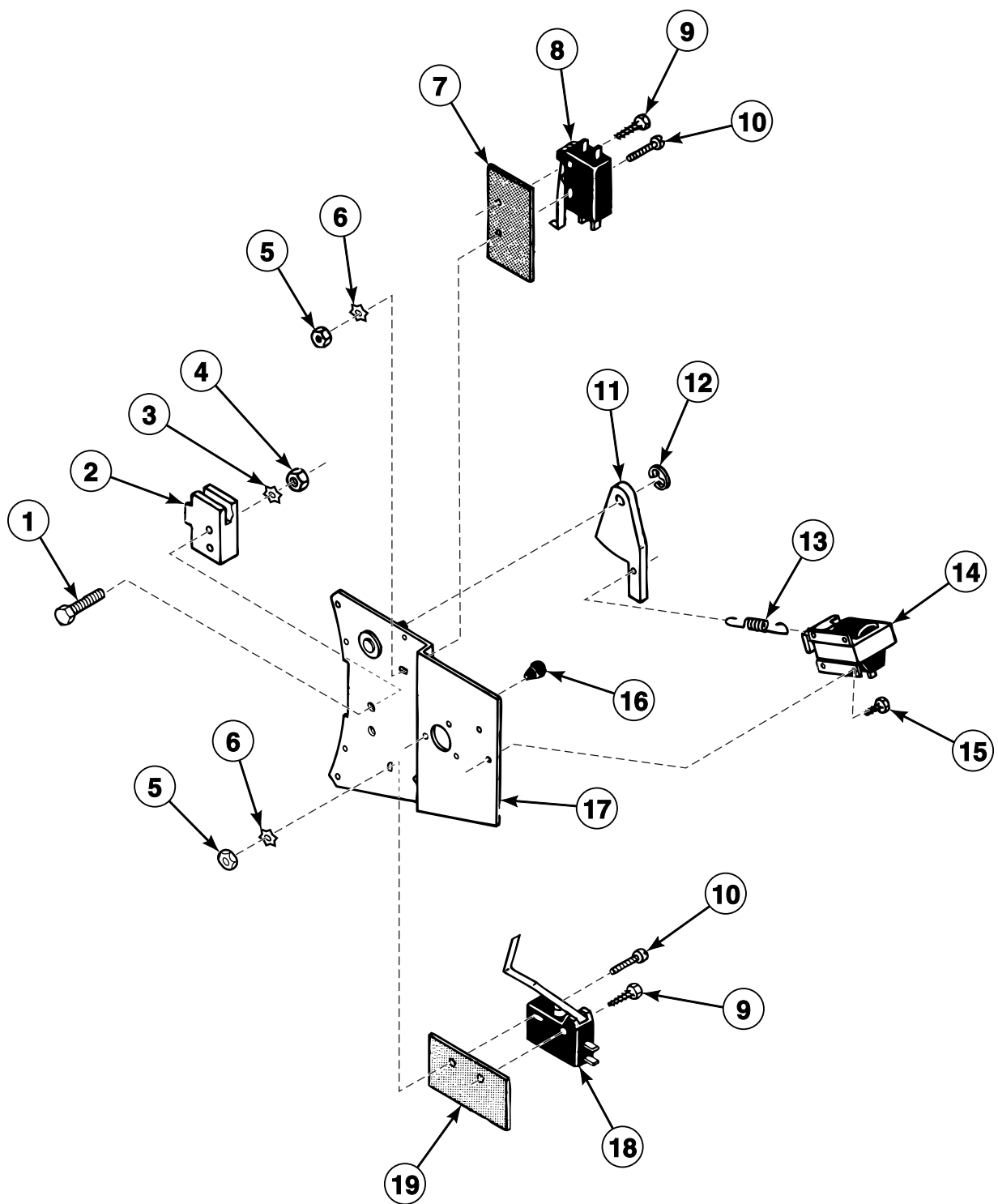
SPR48P_81933

CL9163 P3

CL9163 P4



Door Lock Assembly

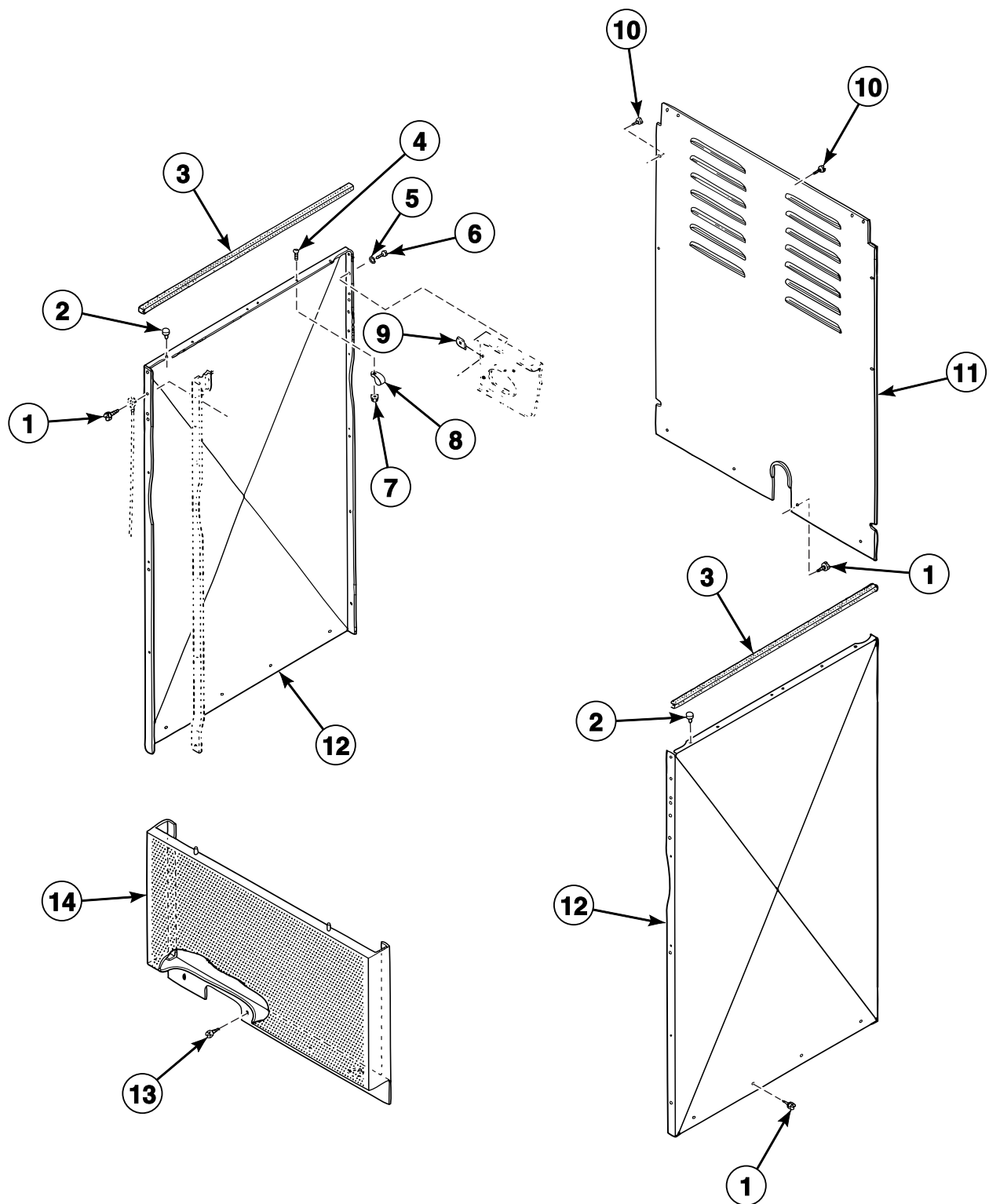


SPR50P_81933

CL9163 P5

© Copyright, Alliance Laundry Sys

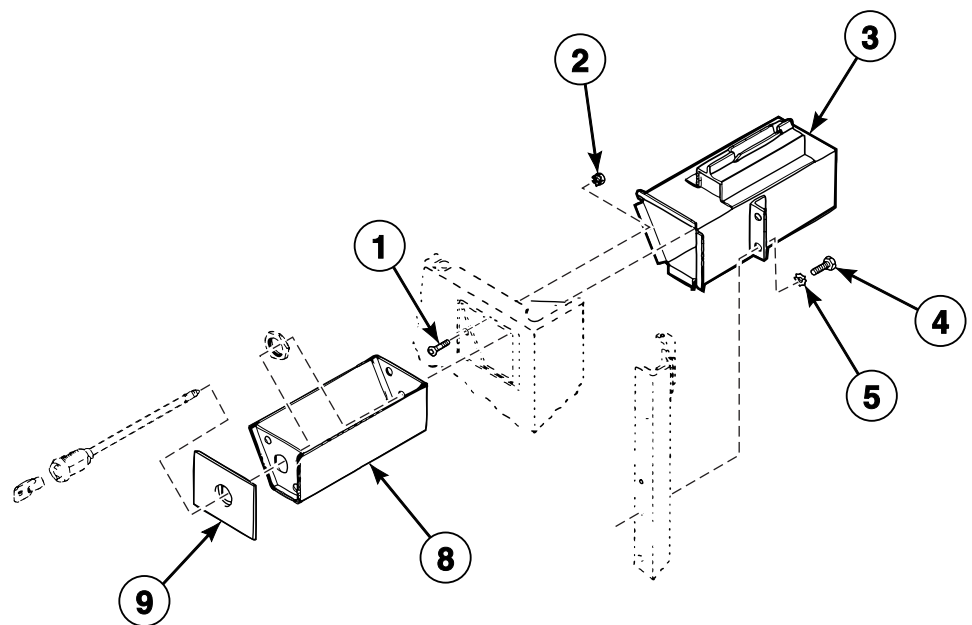
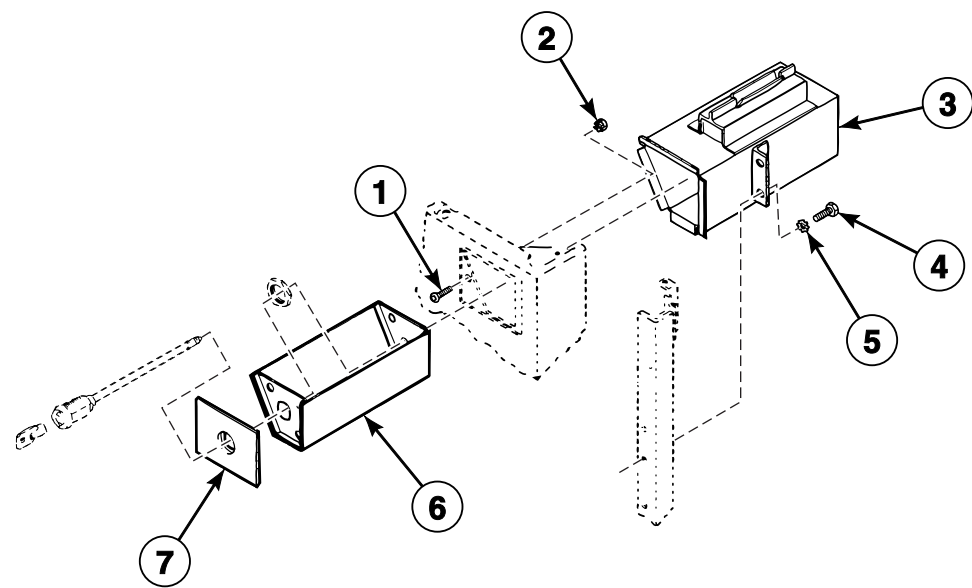
Air Intake Grille and Panels



SPR51P_81933

CL9163 P6

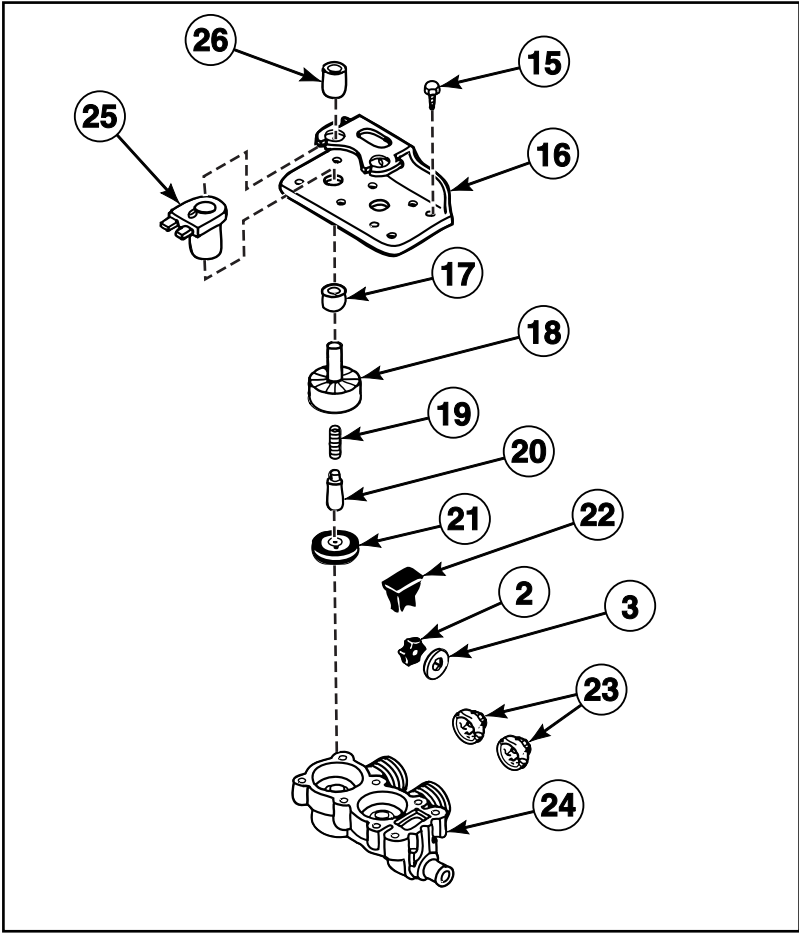
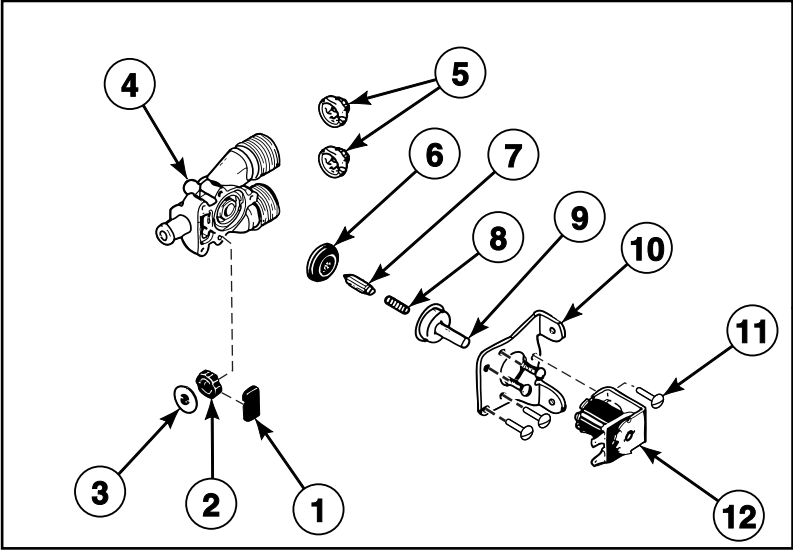
Coin Vault and Drawer - Metered Models CL9161 and CL9163



SPR52P_81933

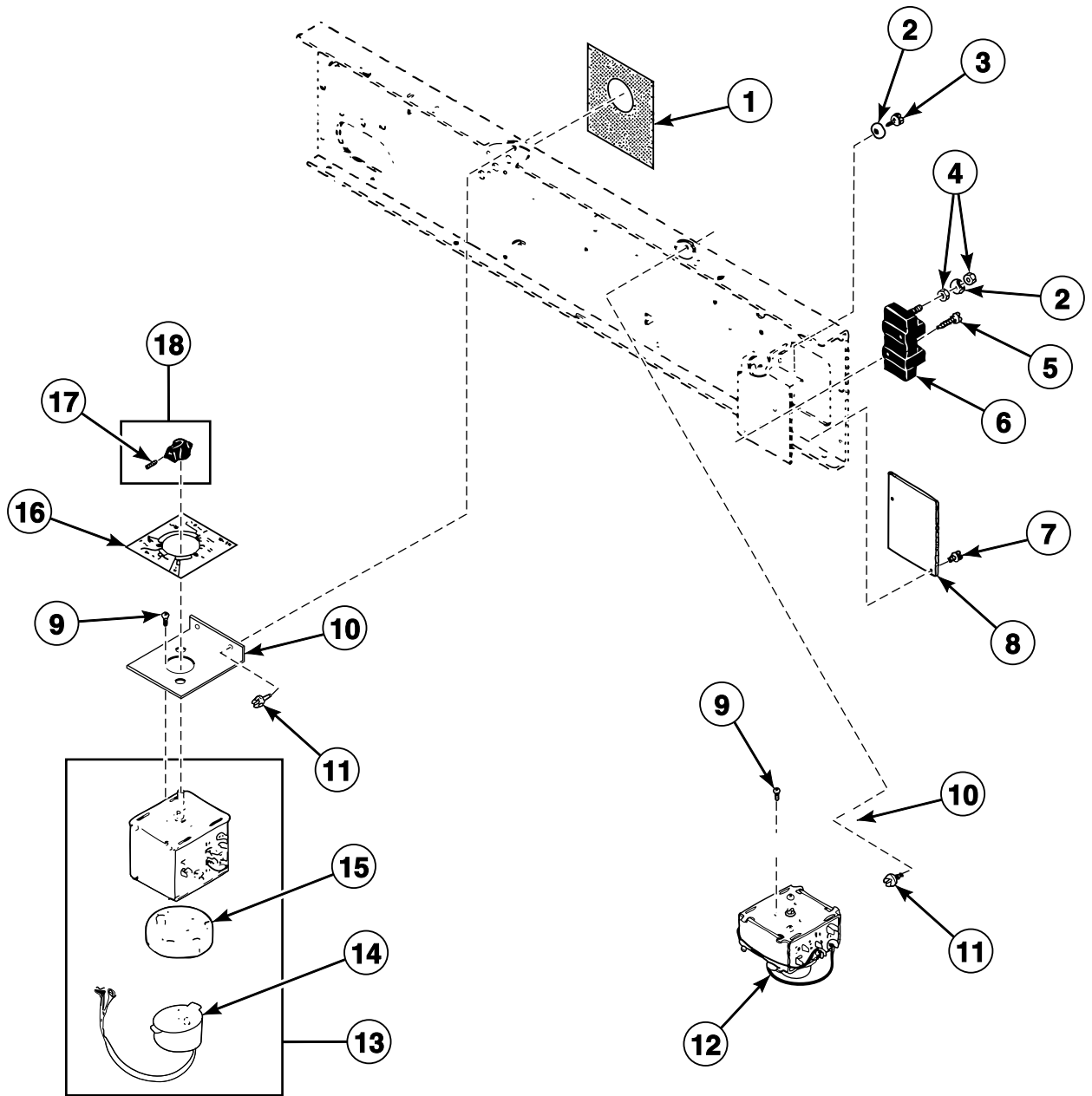
CL9163 P7

Mixing Valve Assembly



CL9163 P8

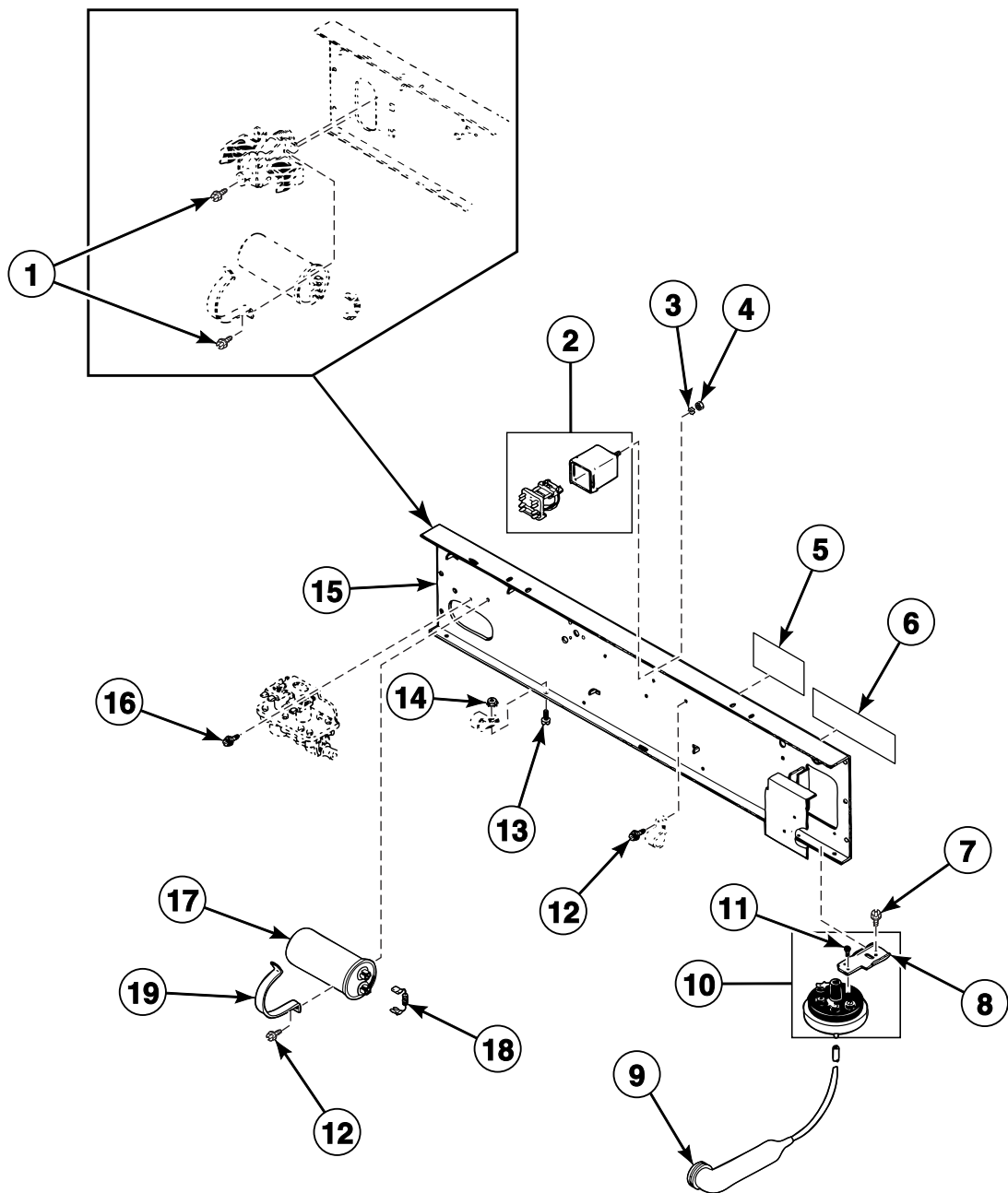
Timers and Terminal Block



SPR54P_81933

CL9163 P9

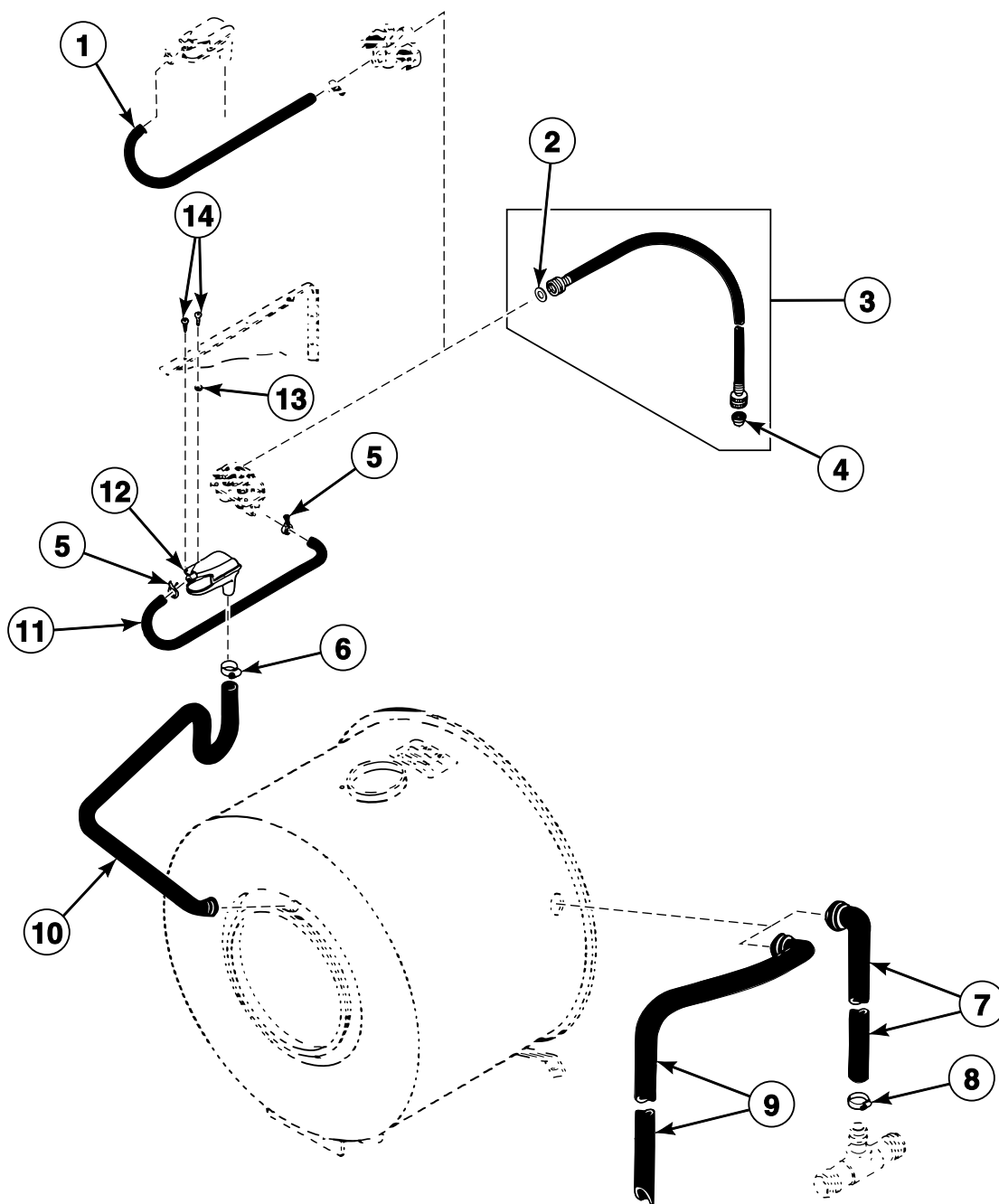
Cross Channel, Capacitor, Relay and Switches



SPR55P_81933

CL9163 P10

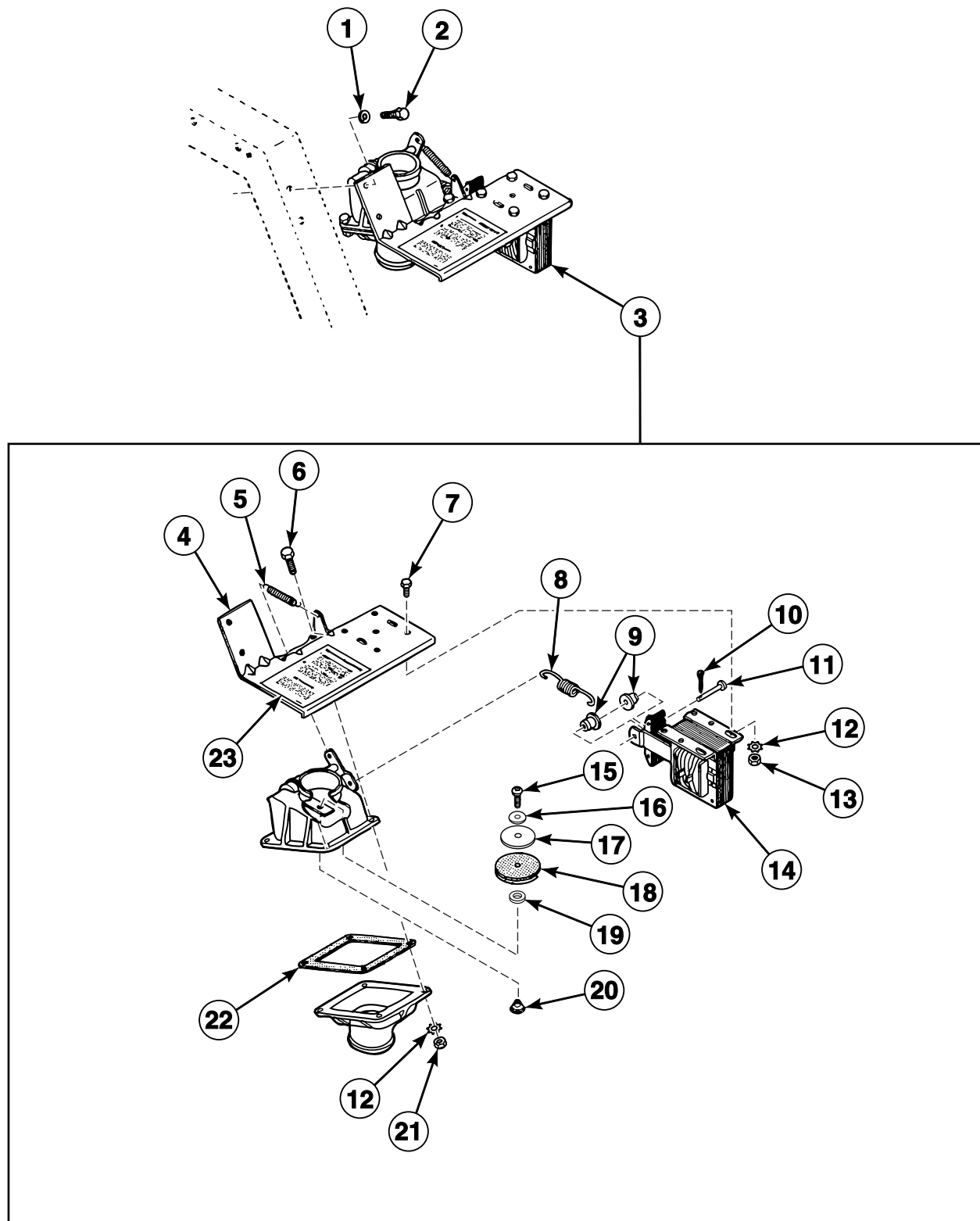
Water Inlet and Hoses



SPR56P_81933

CL9163 P11

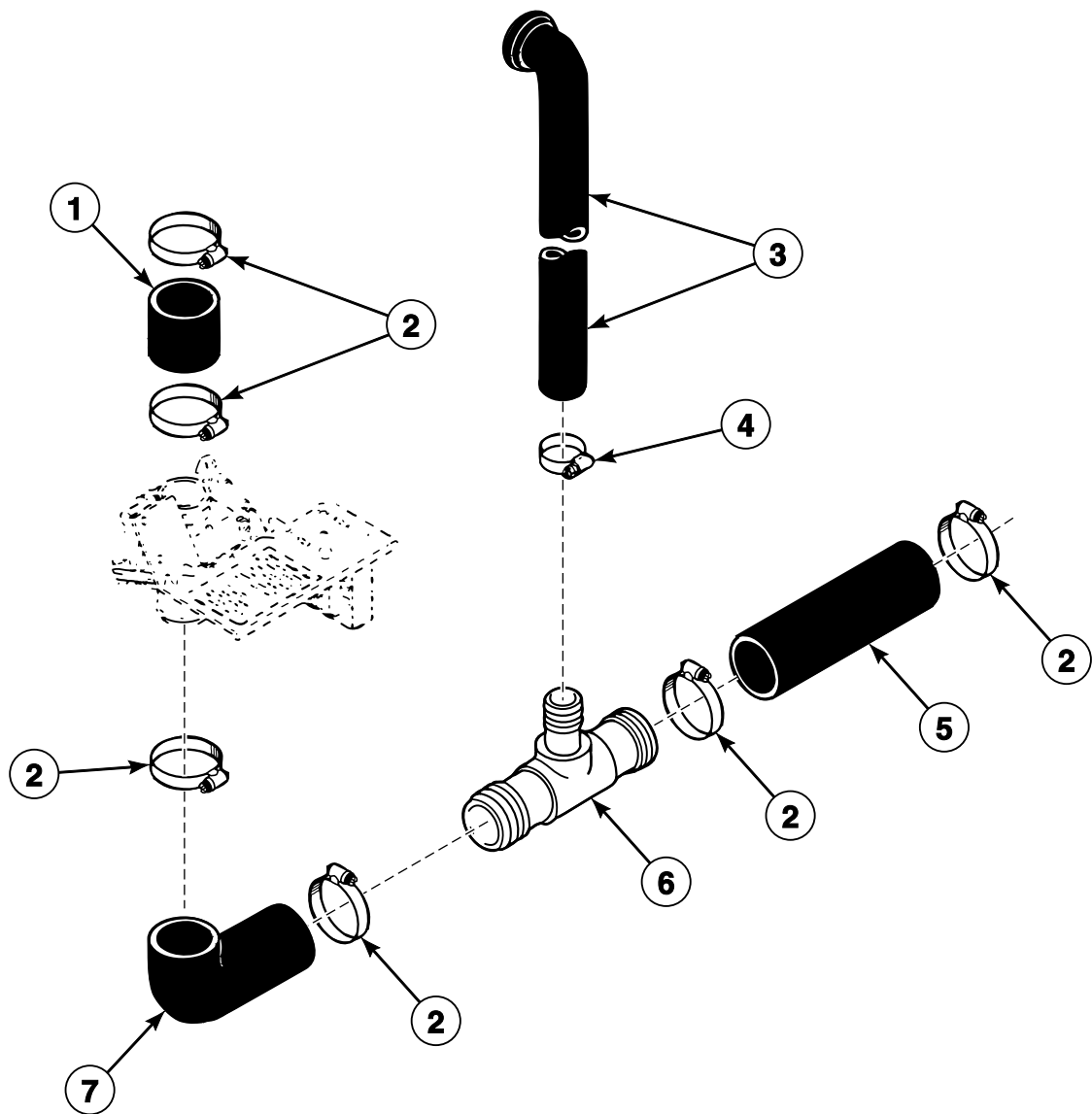
Drain Valve Assembly - Non-Pump Models CL9161 and CL9171



SPR57P_81933

CL9163 P12

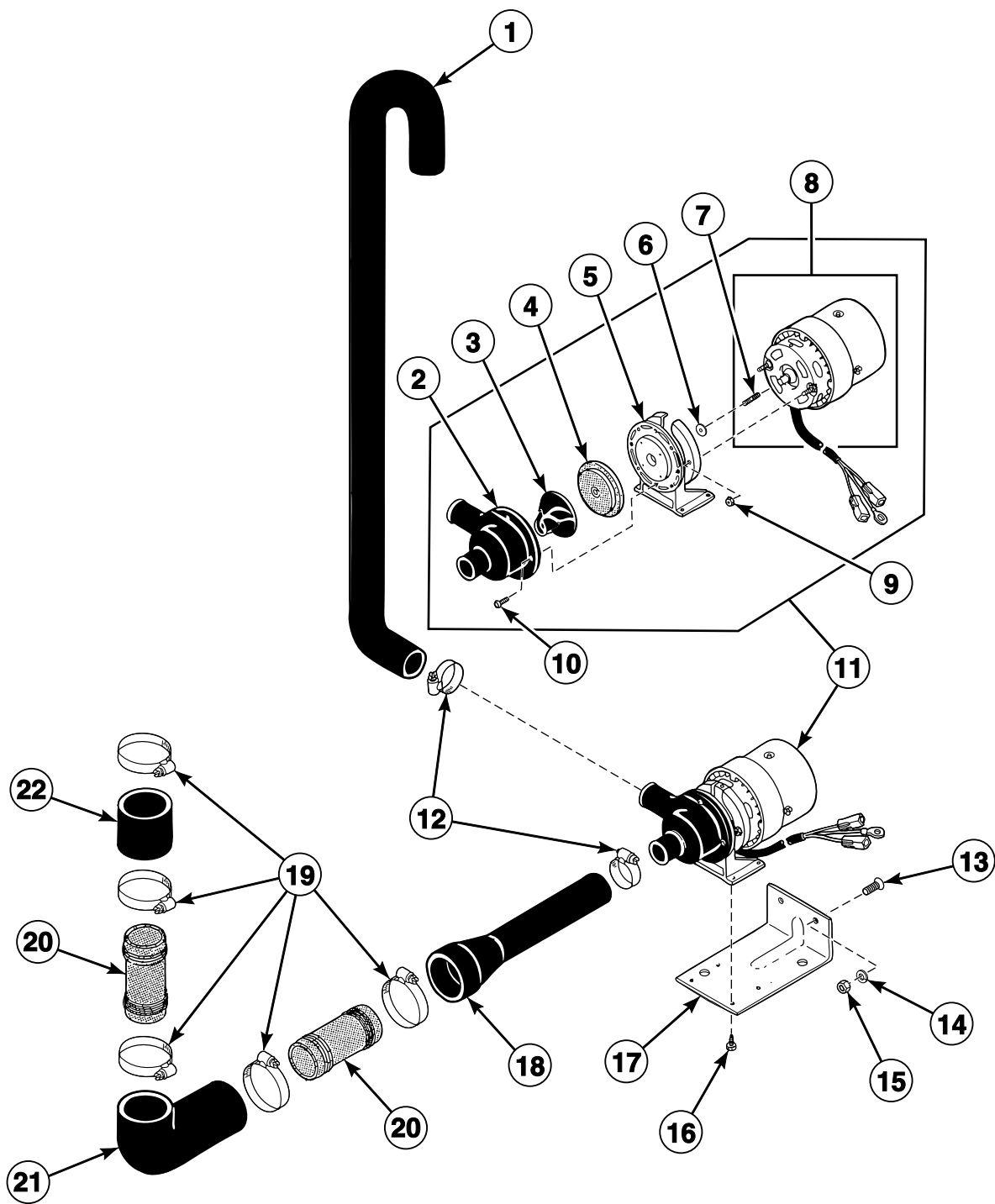
Drain - Non-Pump Models CL9161 and CL9171



SPR58P_81933

CL9163 P13

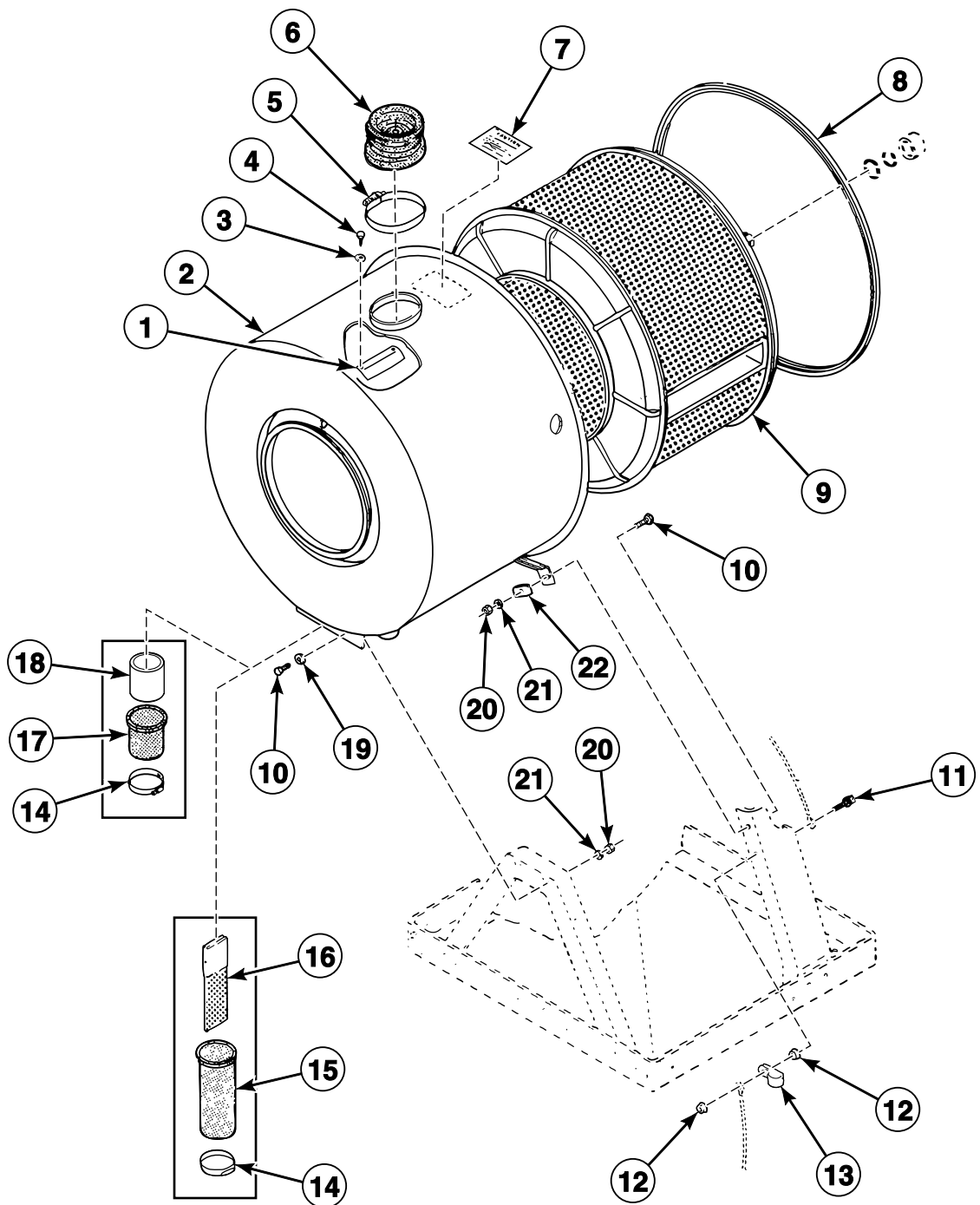
Drain - Pump Models CL9163 and CL9173



SPR59P_81933

CL9163 P14

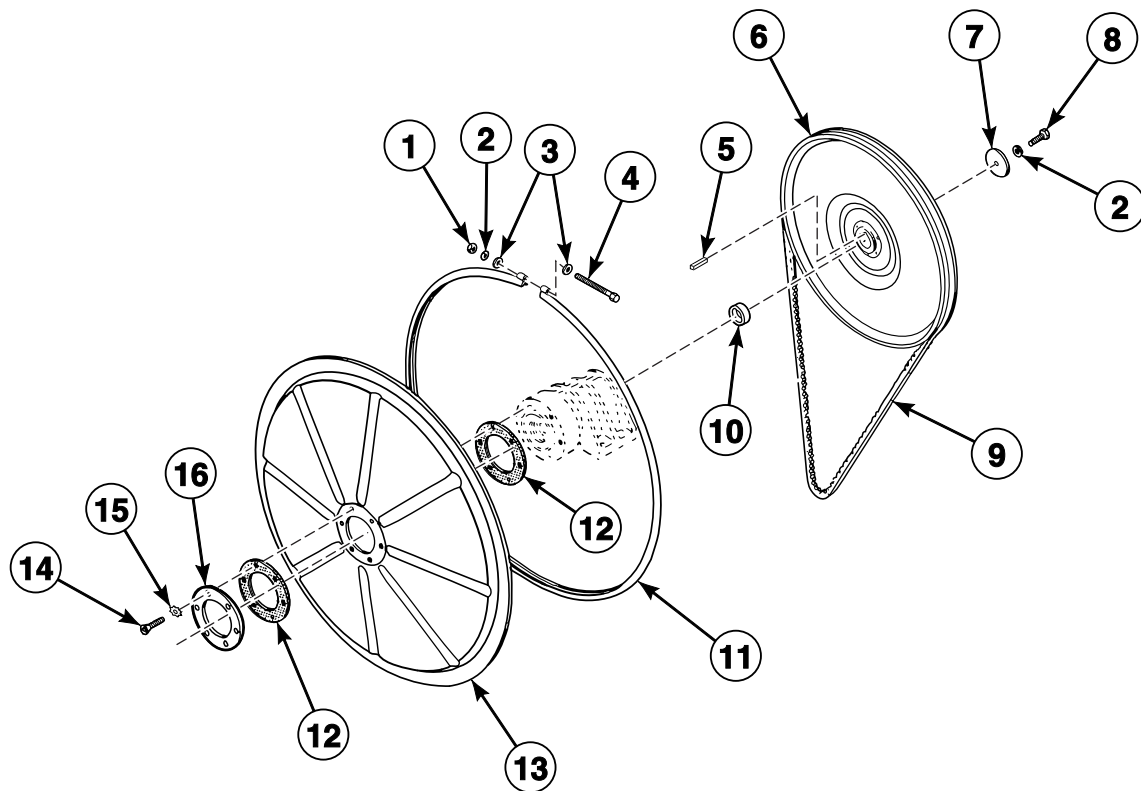
Dispenser Boot, Outer Tub, Cylinder and Button Trap



SPR60P_81933

CL9163 P15

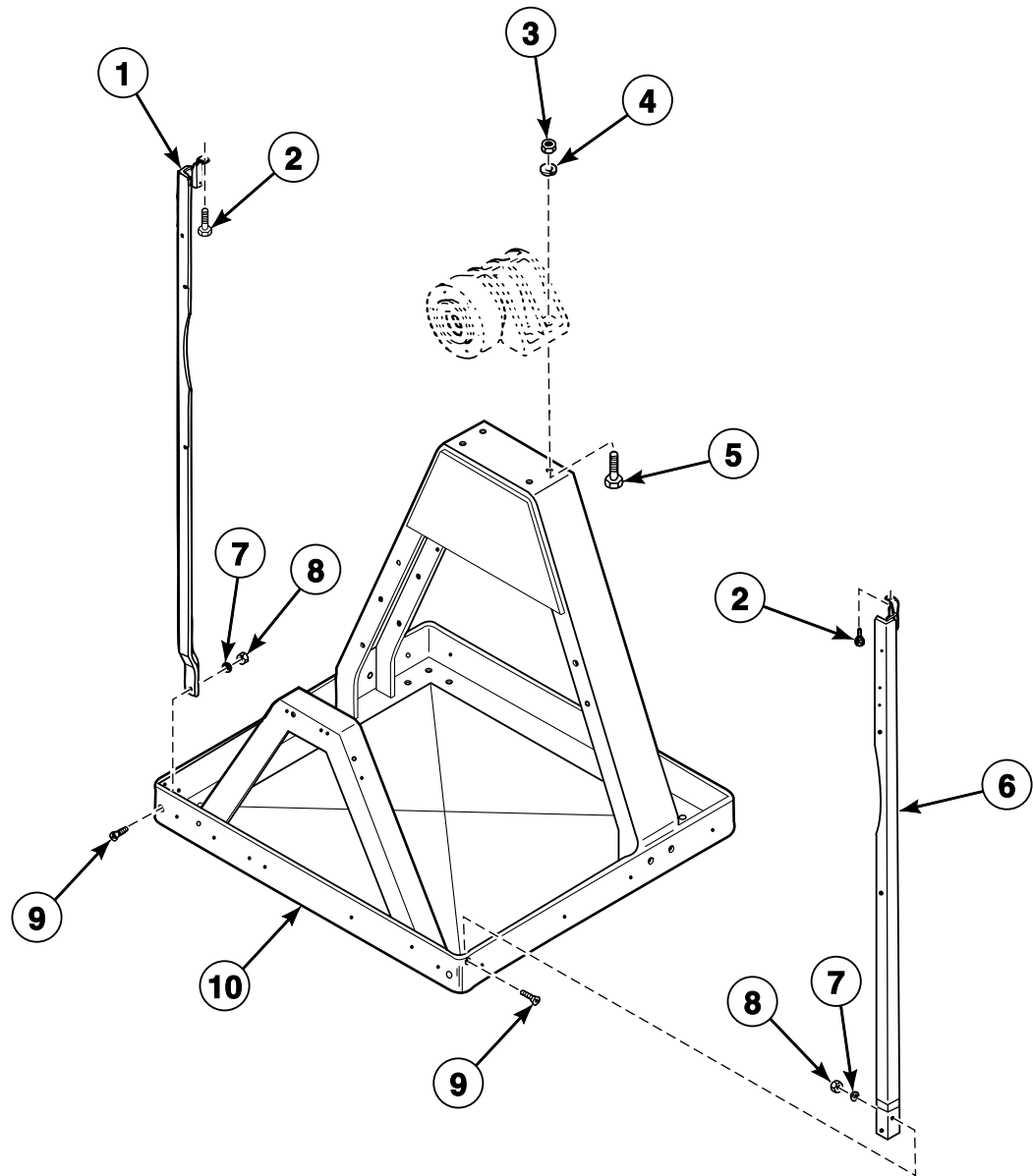
Rear Tub Head, Clamp Ring, Cylinder Pulley and Belt



SPR61P_81933

CL9163 P16

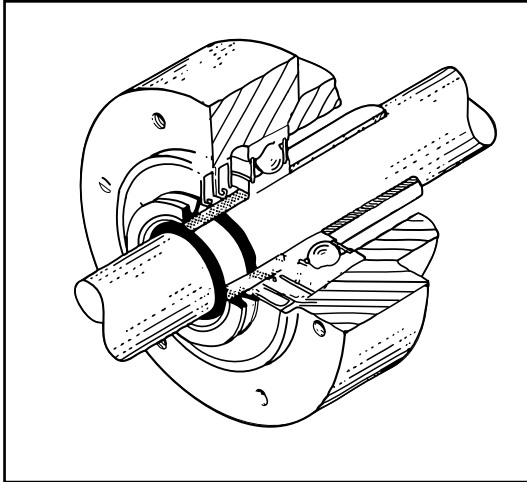
Base and Front Legs



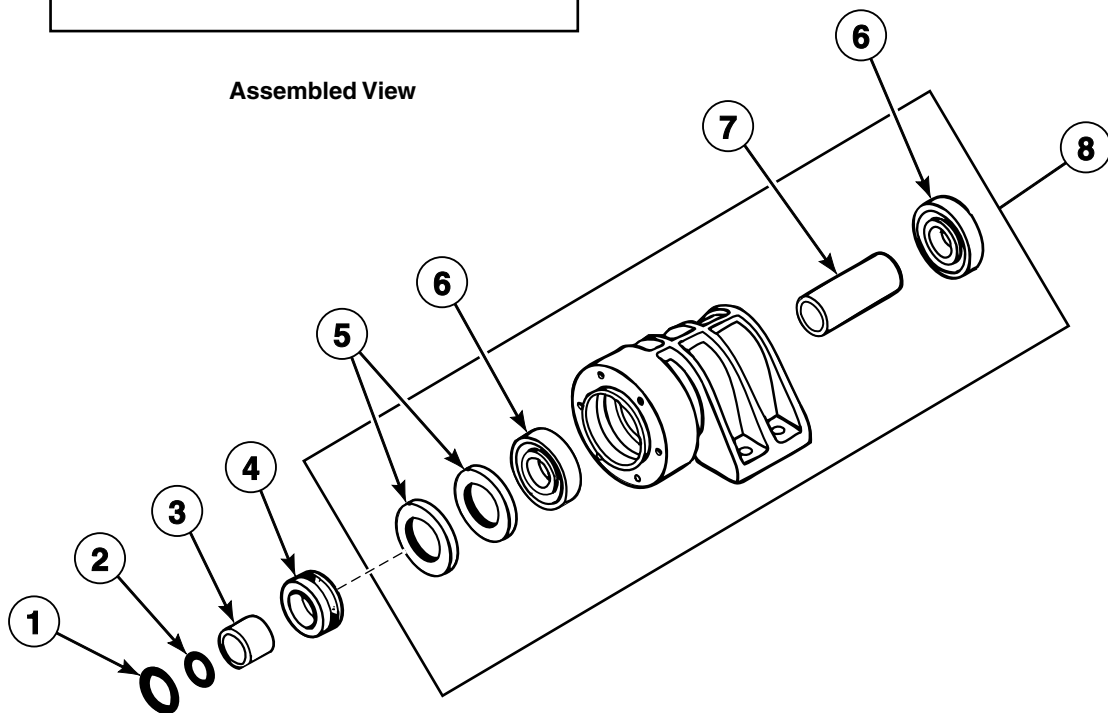
SPR62P_81933

CL9163 P17

Bearing Housing Assembly



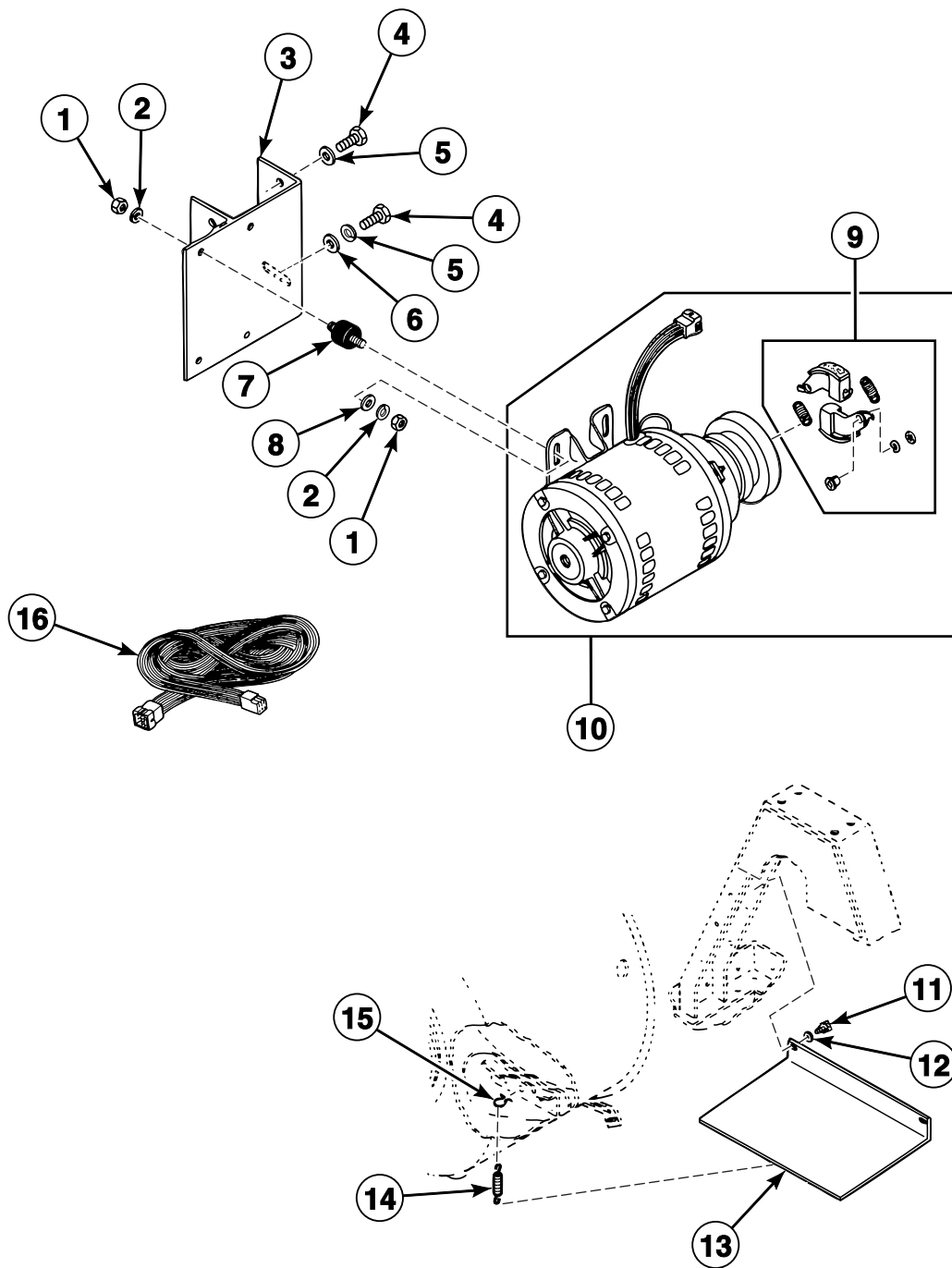
Assembled View



SPR84P_81933

CL9163 P18

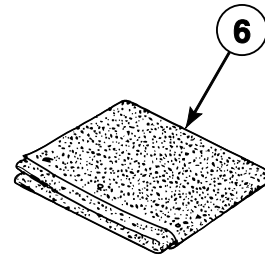
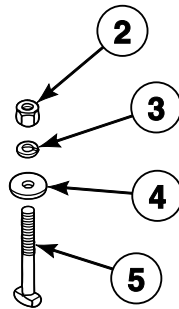
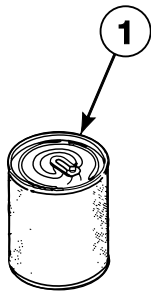
Drive Motor and Shield



SPR63P_81933

CL9163 P19

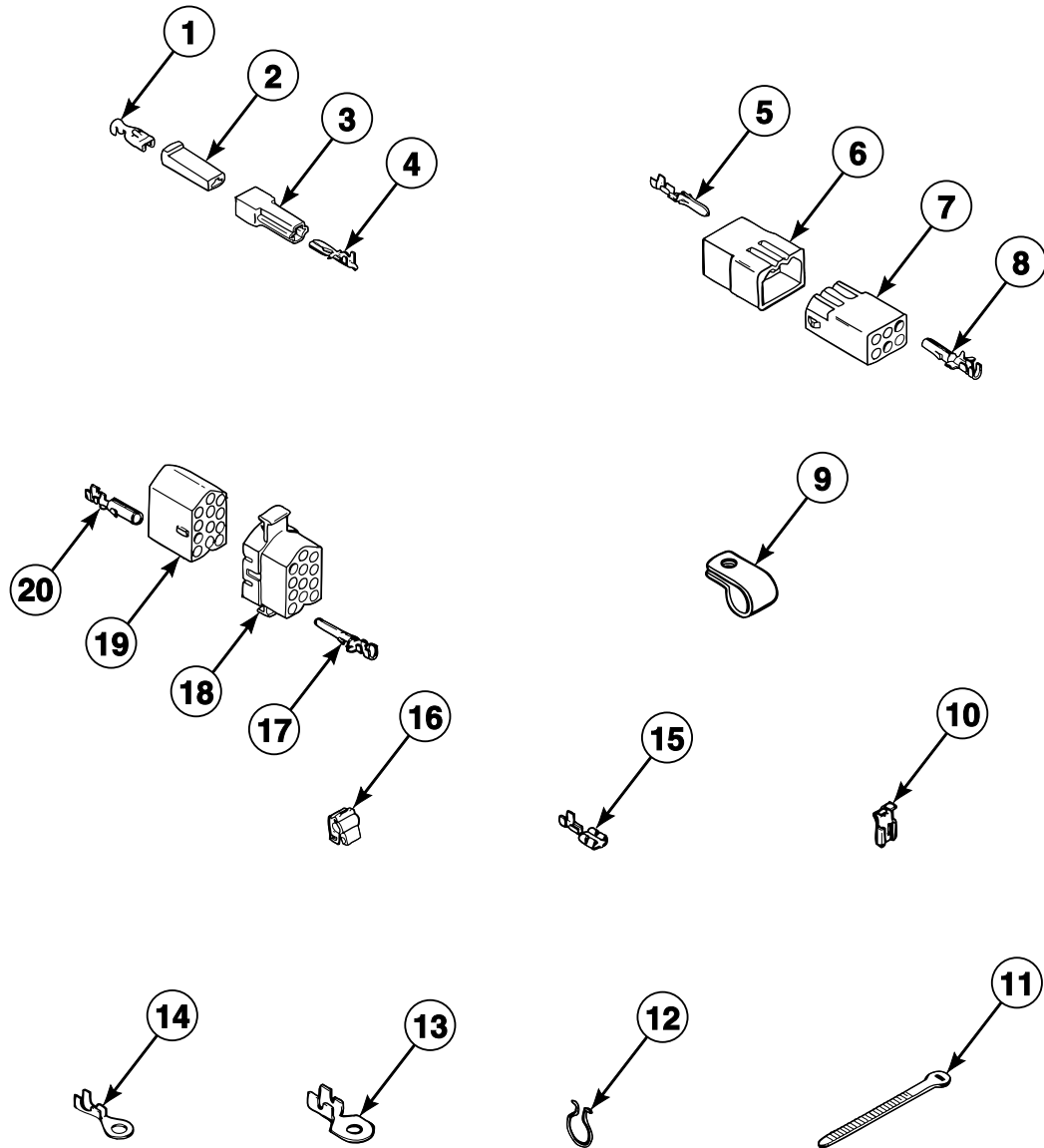
Installation Kit Material



SPR64P_81933

CL9163 P20

Terminals



SPR65P_81933

CL9163 P21