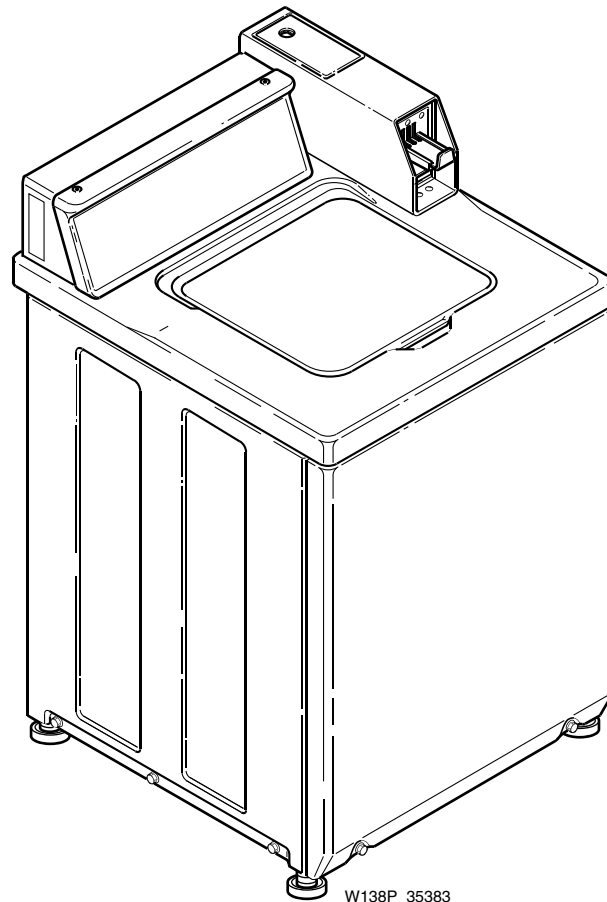


# Automatic Washers EA2111

Parts

Refer to Page 3 for Model Numbers



W138P\_35383

## Parts Ordering Information

If literature or replacement parts are required, contact the source from whom the machine was purchased or contact Alliance Laundry Systems at (920) 748-3950 for the name and address of the nearest authorized parts distributor.

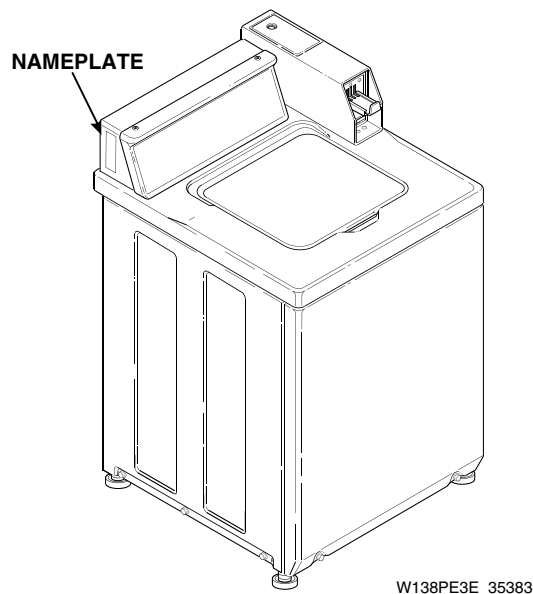
For technical assistance, call either of the numbers listed below:

(920) 748-3121    Ripon, Wisconsin

+32 56 41 20 54    Wevelgem, Belgium

## Nameplate Location

When calling or writing about your product, be sure to mention model and serial numbers. Model and serial numbers are located on nameplate(s) as shown.



## Model Identification

Information in this manual is applicable to these washer models:

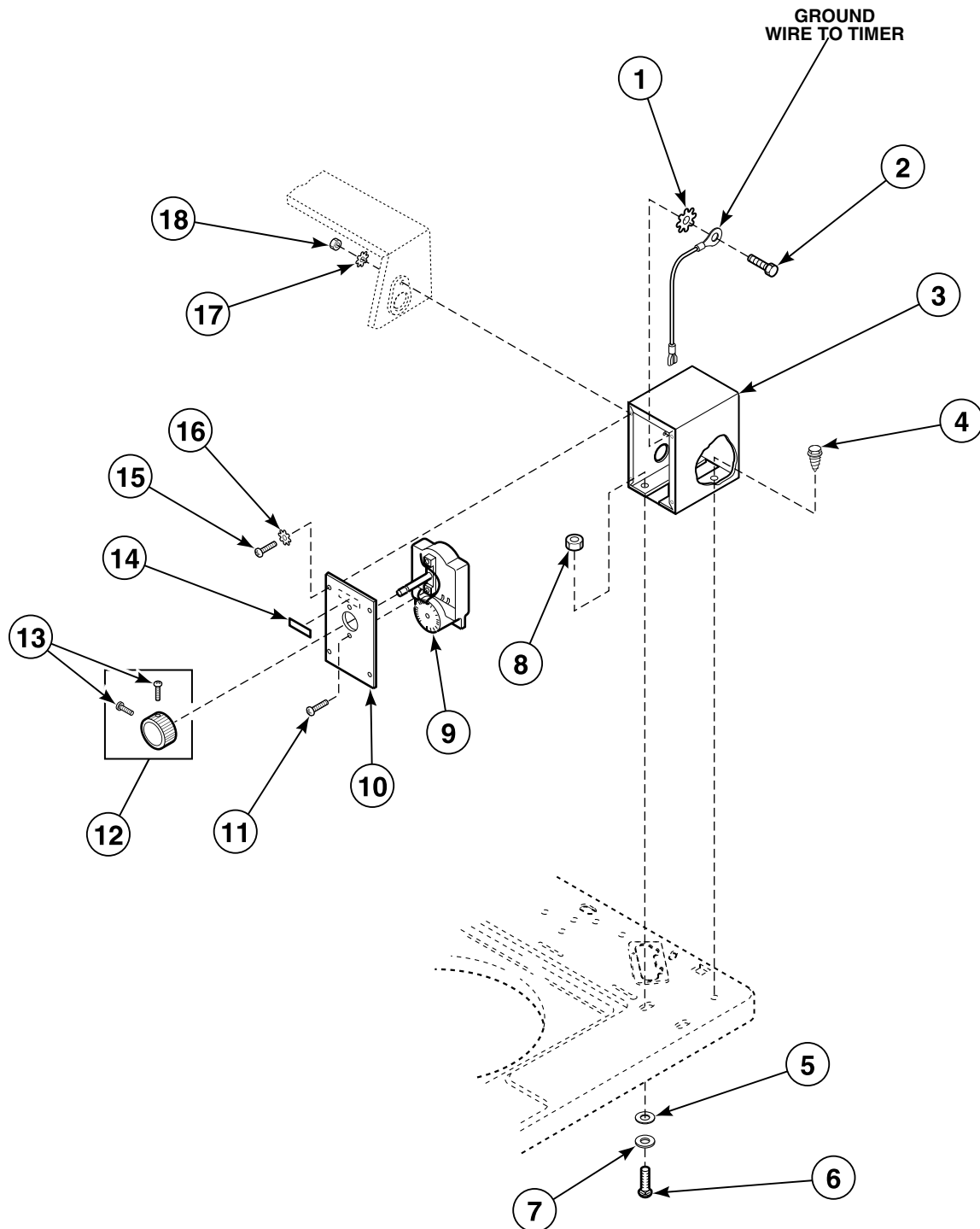
EA2011*	EA2120*	EA2311*	EA2621*	EA2920*
EA2020*	EA2121*	EA2520*	EA2710*	EA2921*
EA2021*	EA2210*	EA2521*	EA2721*	JA0110*T
EA2110*	EA2220*	EA2610*	EA2820*	
EA2111*	EA2221*	EA2620*	EA2821*	

\* Add Letter To Designate Color. L - Almond W - White

# EA2111

# Timer, Case and Plate

Models EA2011\*, EA2020\* and EA2021\*

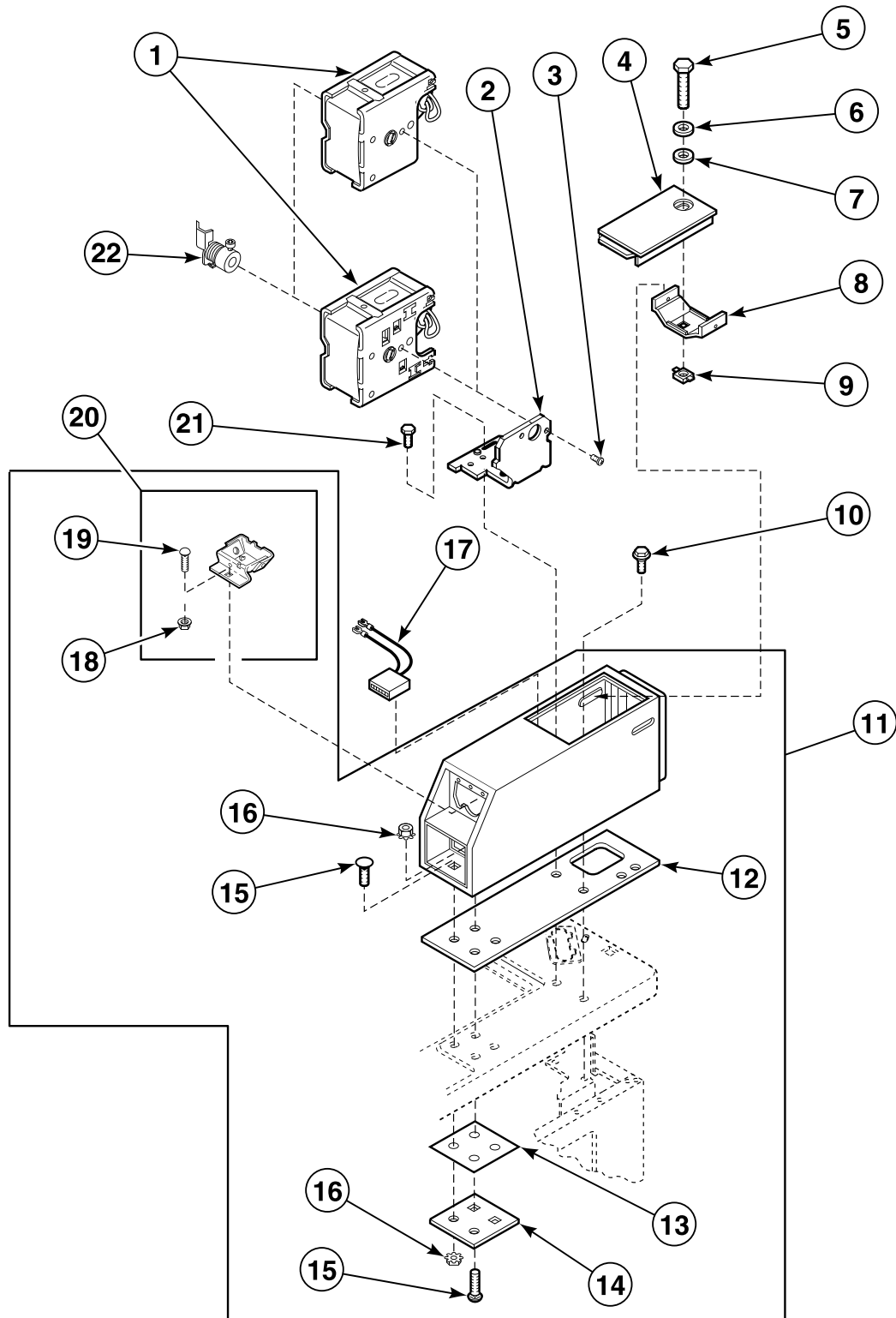


W116PZ3D\_35383

# EA2111 P1

# Timer, Meter Case and Service Door (Drawing 1 of 2)

Models EA2110\*, EA2111\*, EA2120\*, EA2121\*, EA2210\*, EA2220\*, EA2221\*, EA2311\*, EA2520\*, EA2521\* and JA0110\*T

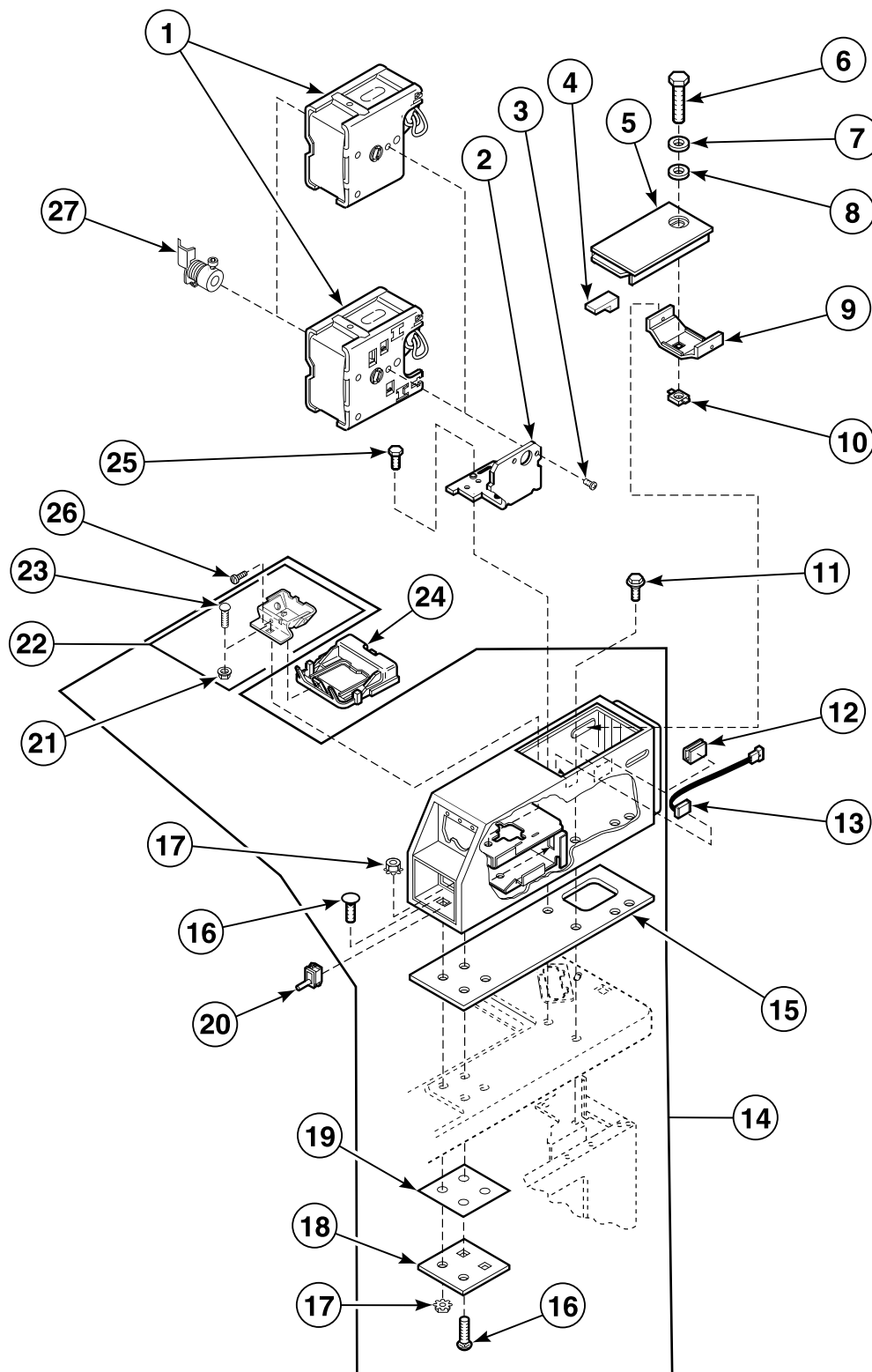


W117PZ3B\_35383

**EA2111 P2**

## Timer, Meter Case and Service Door (Drawing 2 of 2)

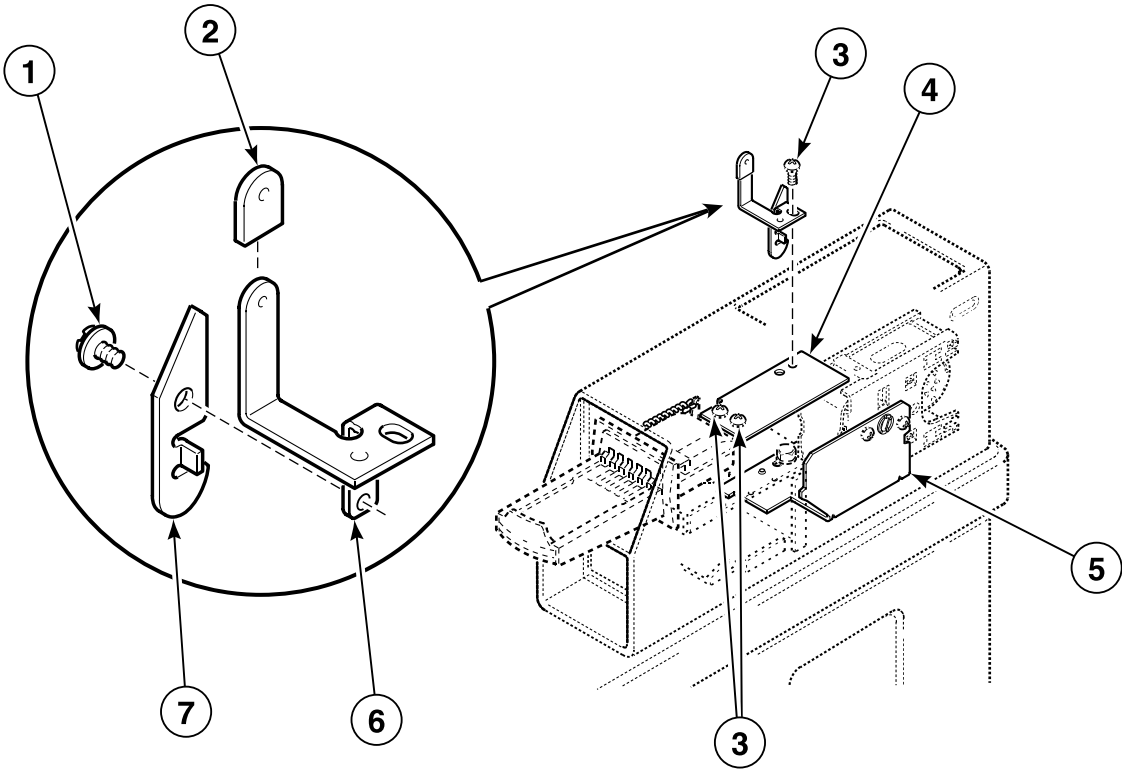
Models EA2610\*, EA2620\*, EA2621\*, EA2710\* and EA2721\*



W118PZ3B\_35383

EA2111 P3

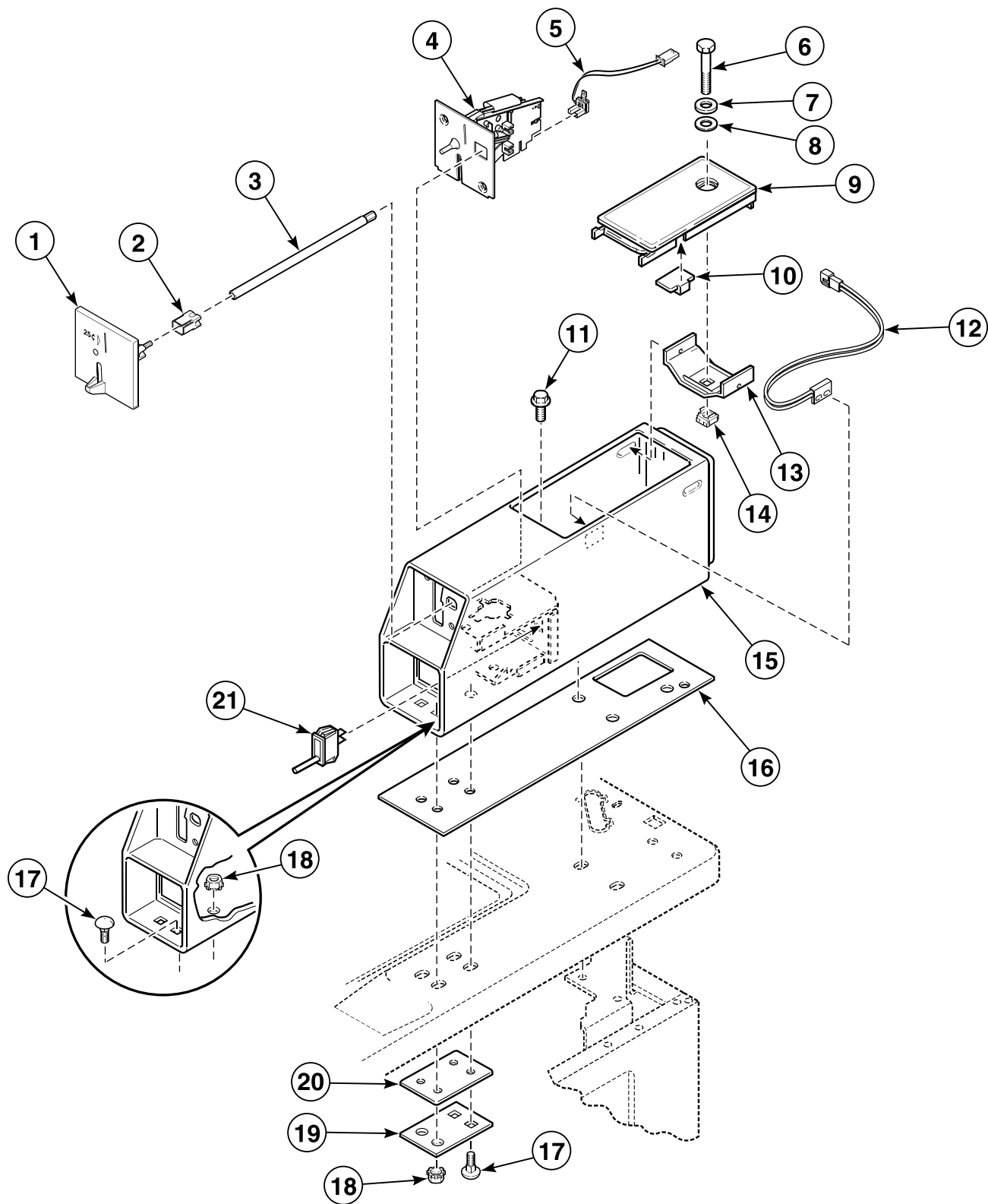
552P3 Coin Slide Start Security Kit



W026K\_35383

# Coin Drop, Meter Case and Service Door

Models EA2820\*, EA2821\*, EA2920\* and EA2921\*



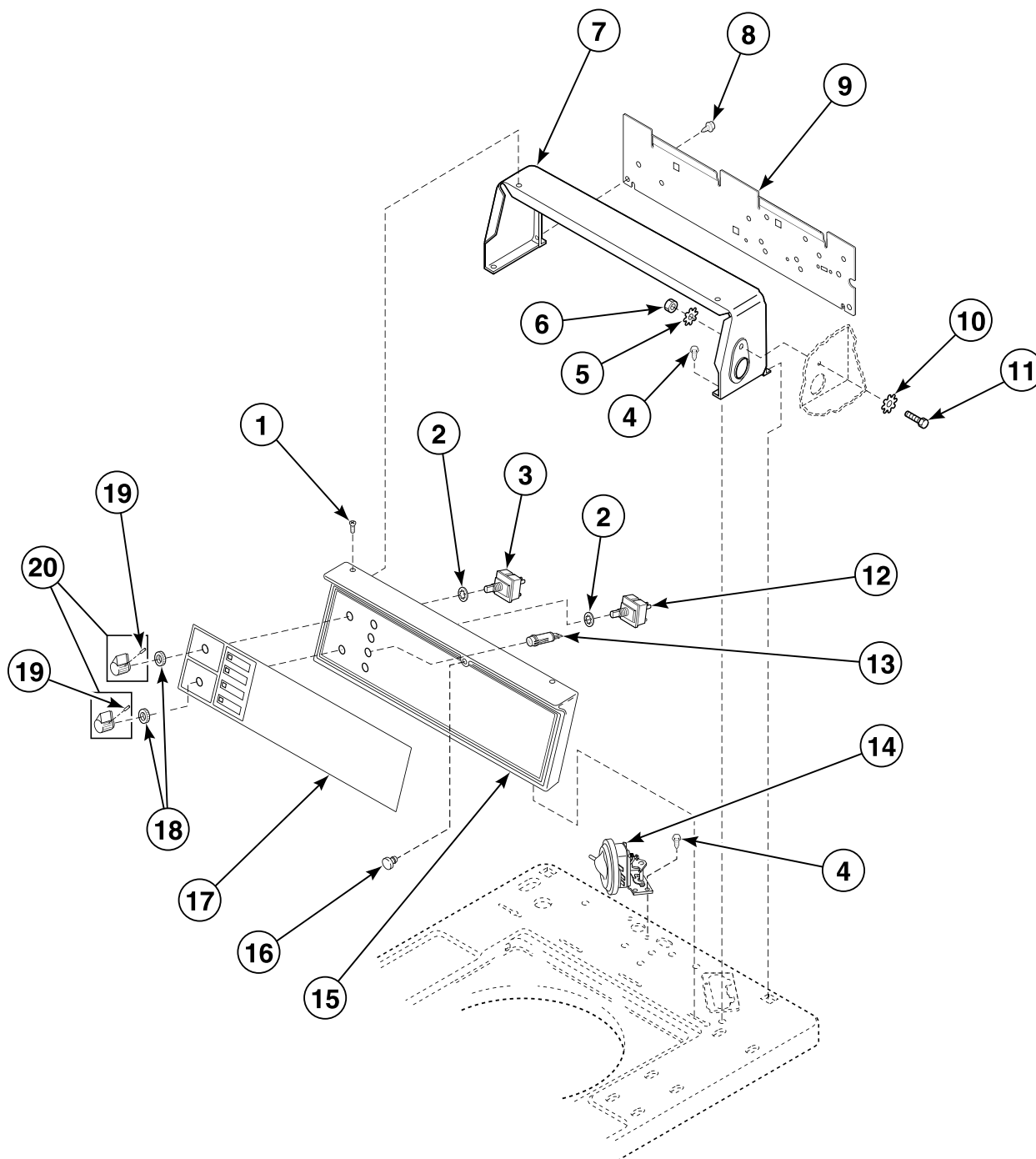
TLW1606P\_35383

## EA2111 P5



# Control Panel, Control Hood and Controls (Drawing 1 of 4)

Models EA2011\*, EA2020\*, EA2021\*, EA2110\*, EA2111\*, EA2120\*, EA2121\*, EA2210\*,  
EA2220\*, EA2221\*, EA2520\*, EA2521\* and JA0110\*T

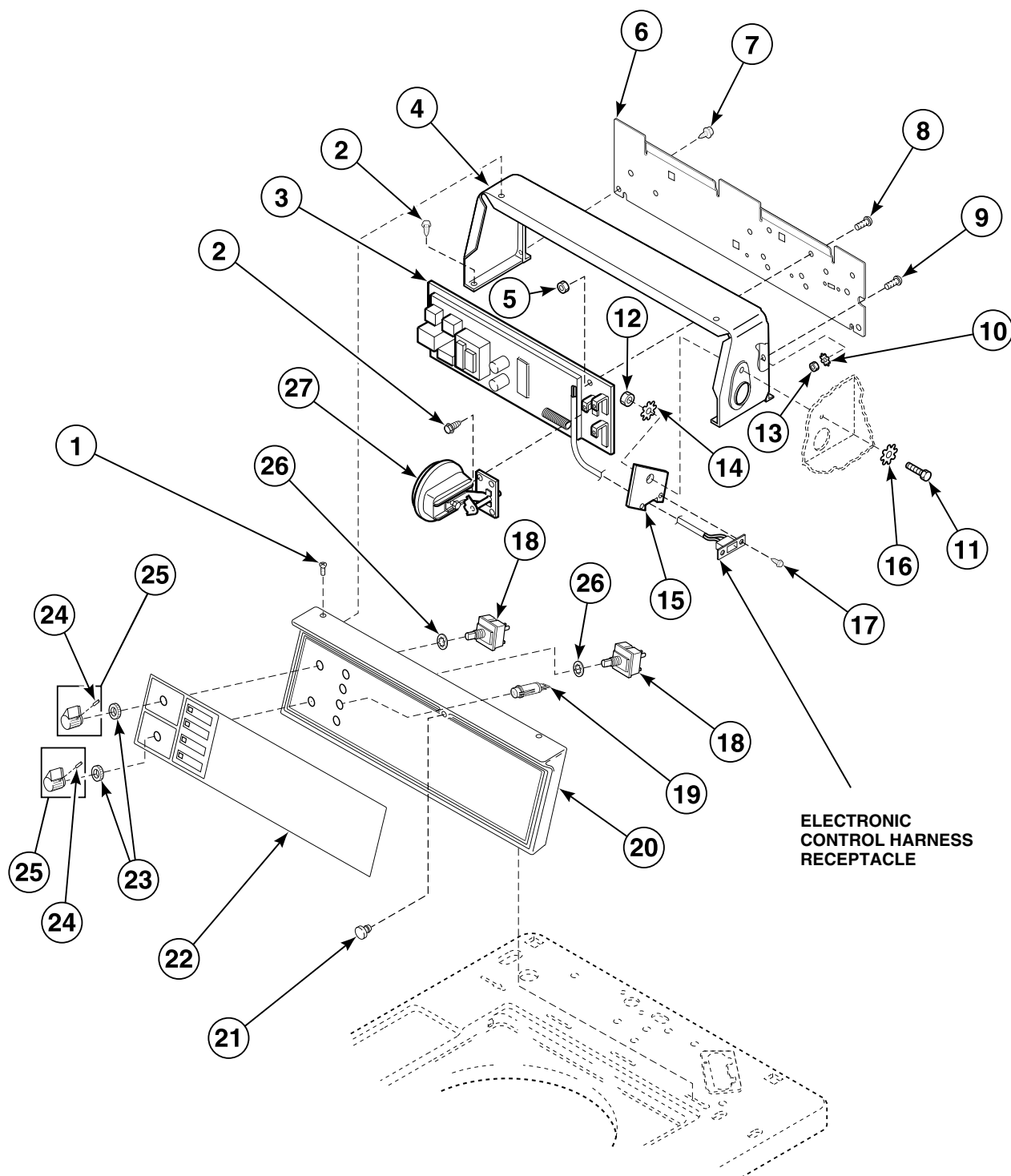


W119PZ3D\_35383

## EA2111 P6

# Control Panel, Control Hood and Controls (Drawing 2 of 4)

Model EA2311\*

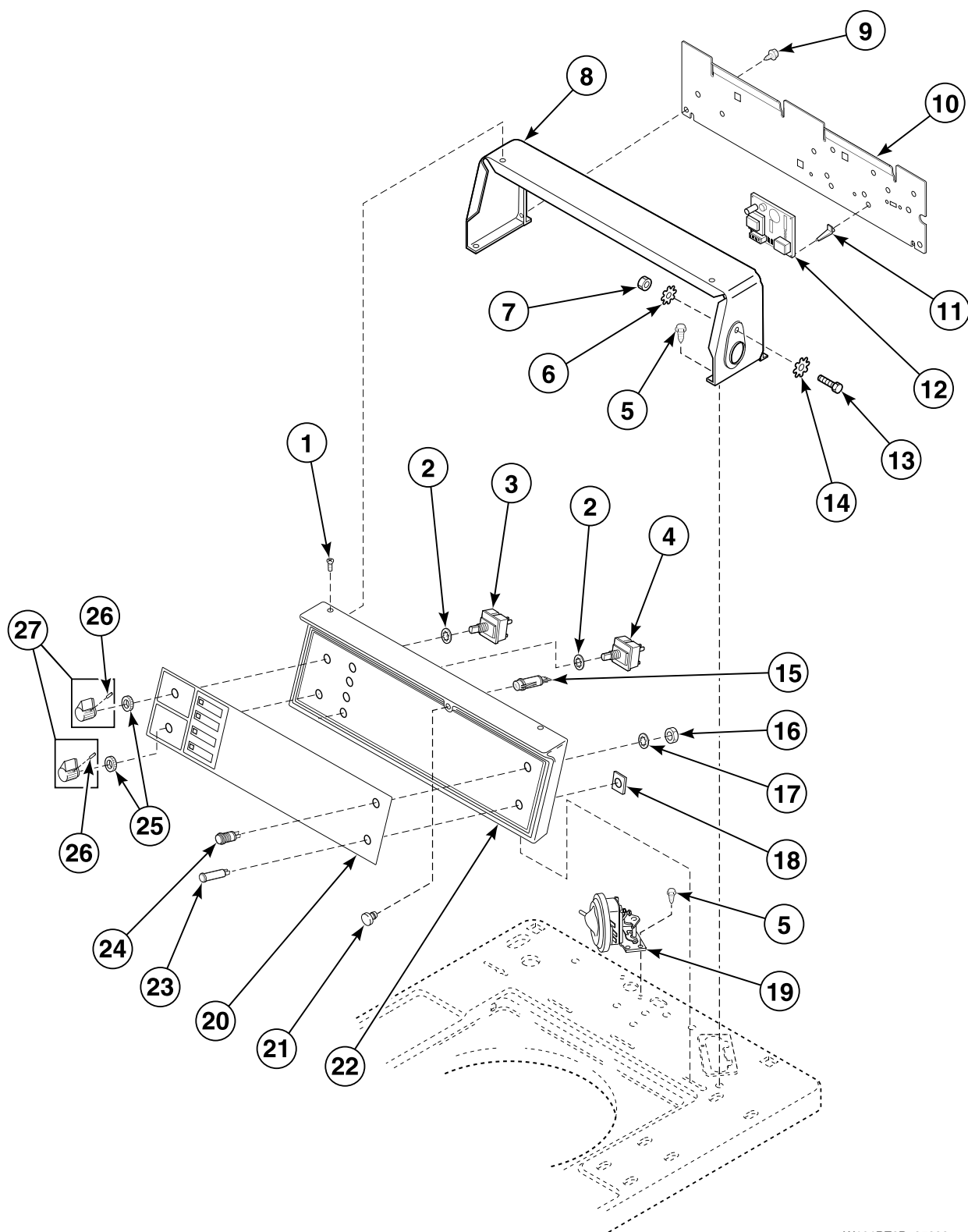


W120PZ3B\_35383

EA2111 P7

# Control Panel, Control Hood and Controls (Drawing 3 of 4)

Models EA2610\*, EA2620\*, EA2621\*, EA2710\* and EA2721\*

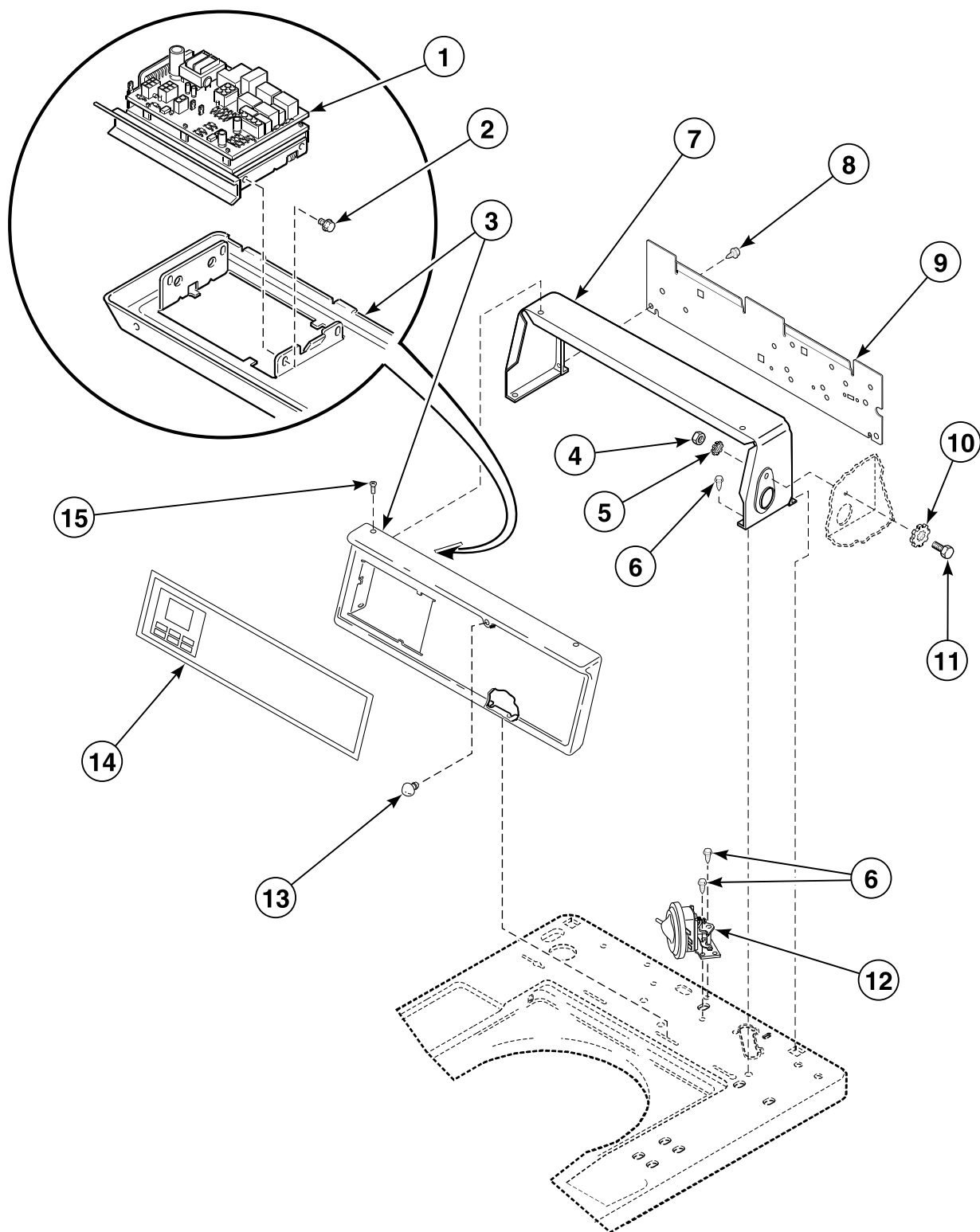


W121PZ3B\_35383

EA2111 P8

# Control Panel, Control Hood and Controls (Drawing 4 of 4)

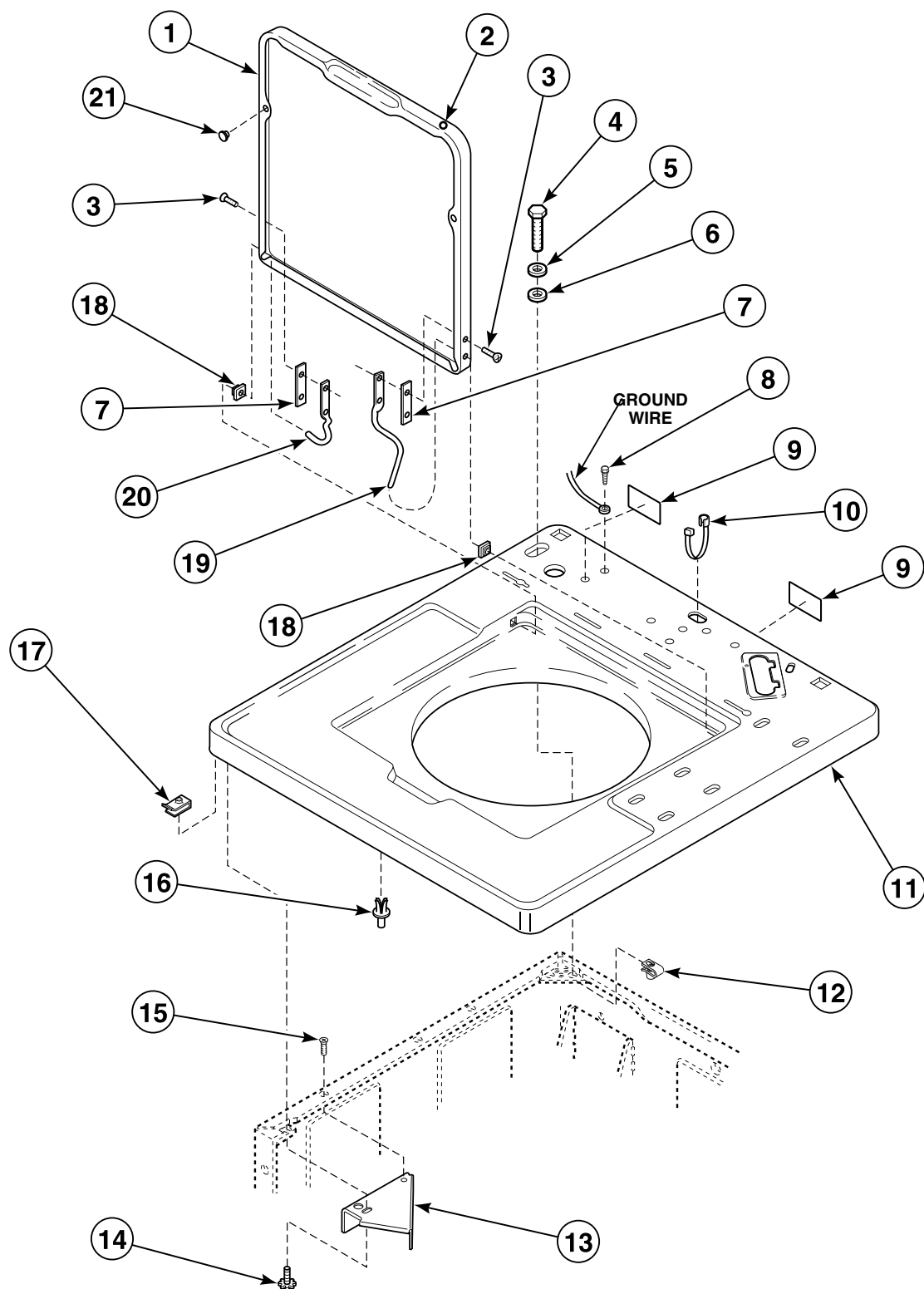
Models EA2820\*, EA2821\*, EA2920\* and EA2921\*



W196P\_35383

EA2111 P9

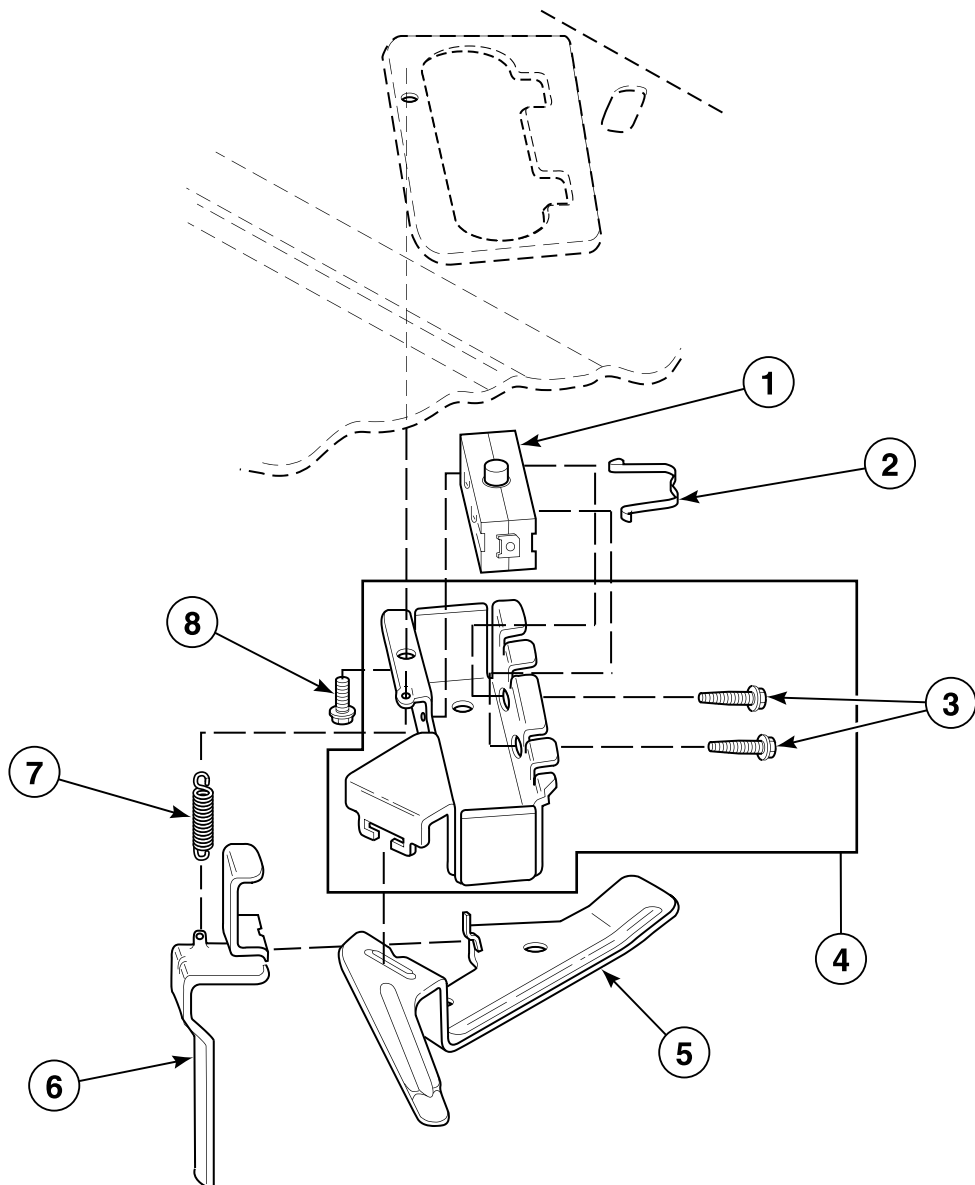
## Cabinet Top and Loading Door



W123PZ3B\_35383

EA2111 P10

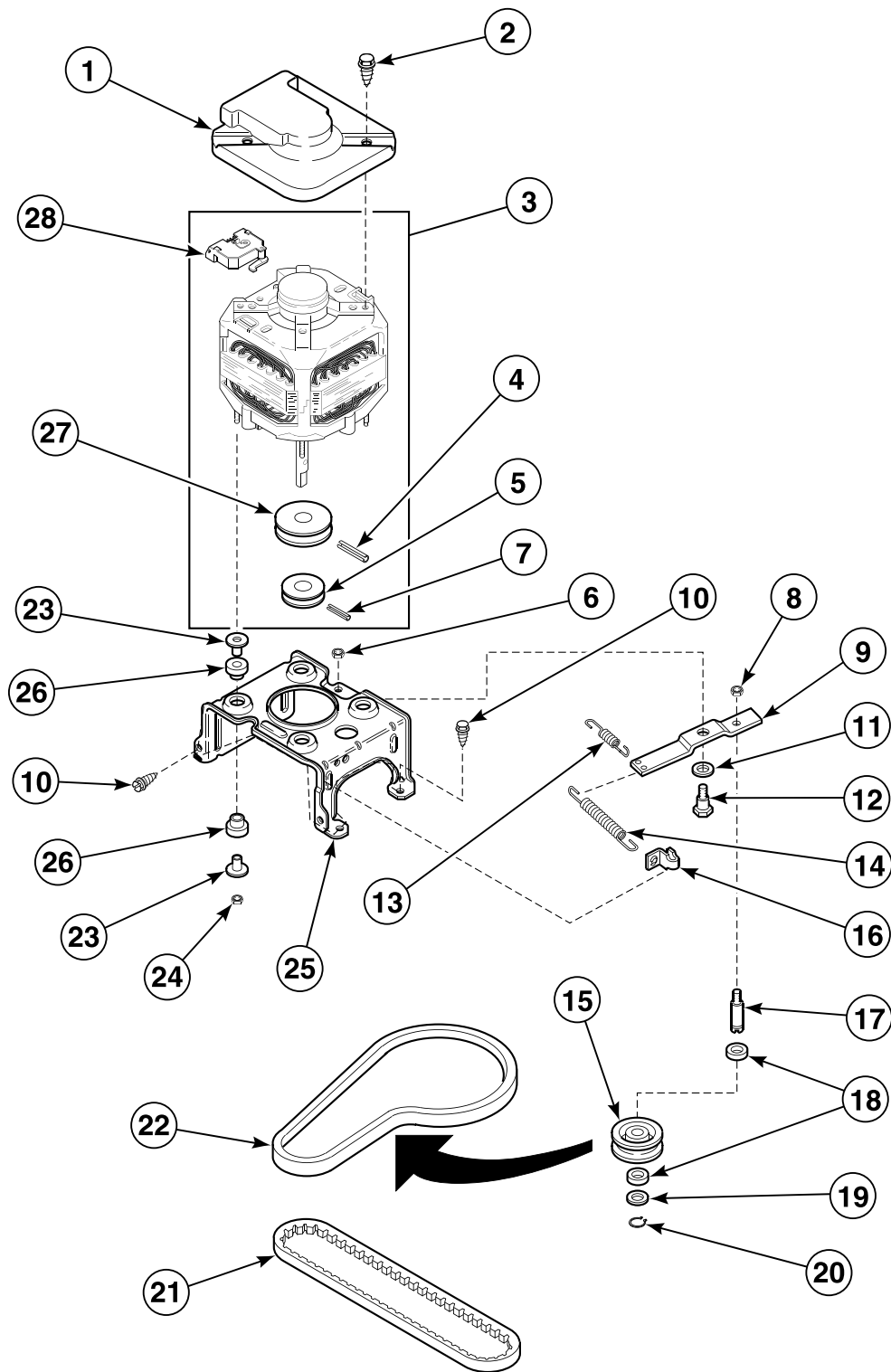
## Out-of-Balance Switch



W209P\_35383

**EA2111 P11**

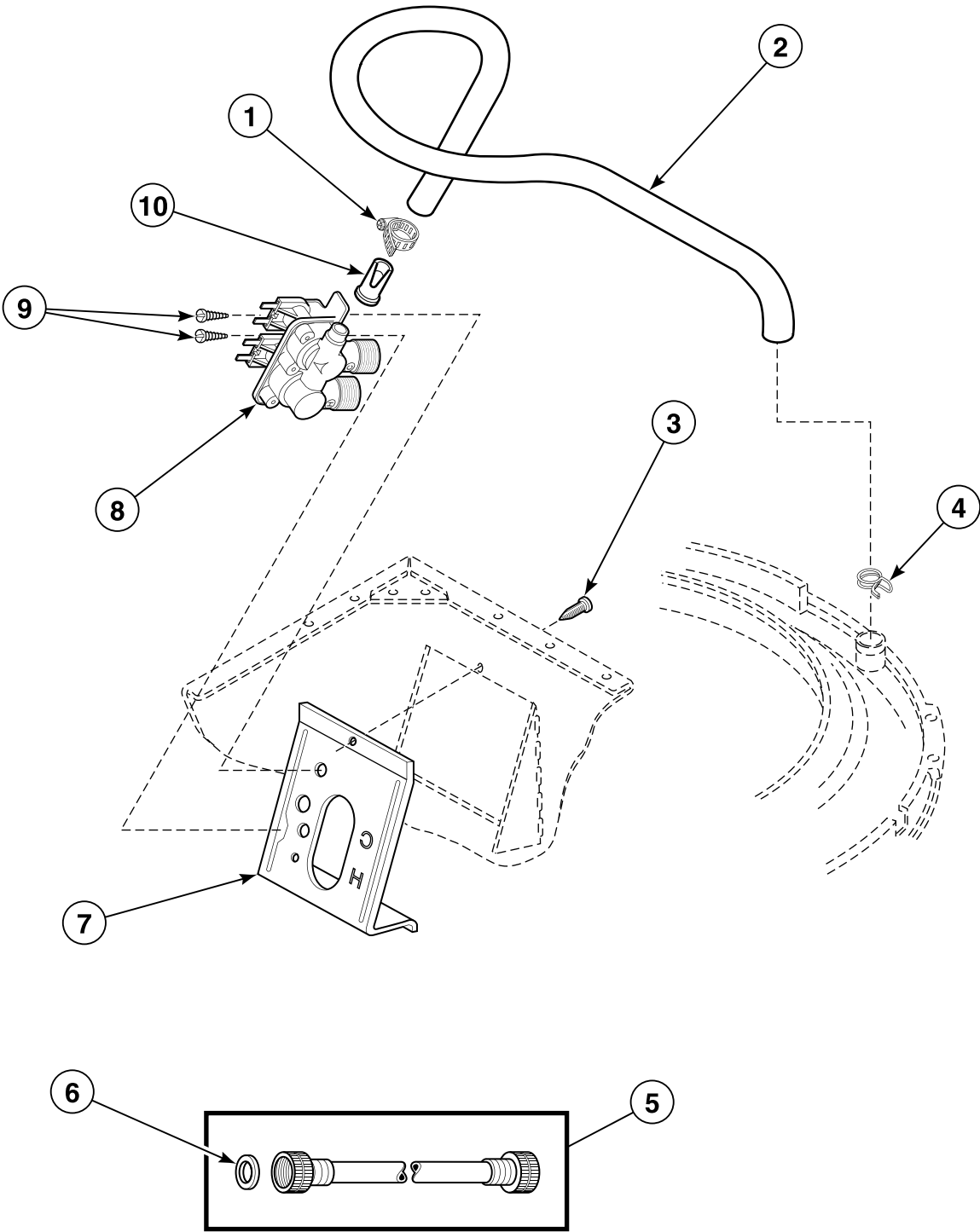
# Motor, Mounting Bracket, Belts and Idler Assembly



W235P\_35383

EA2111 P12

# Inlet Hose, Fill Hose and Mixing Valve and Mounting Bracket

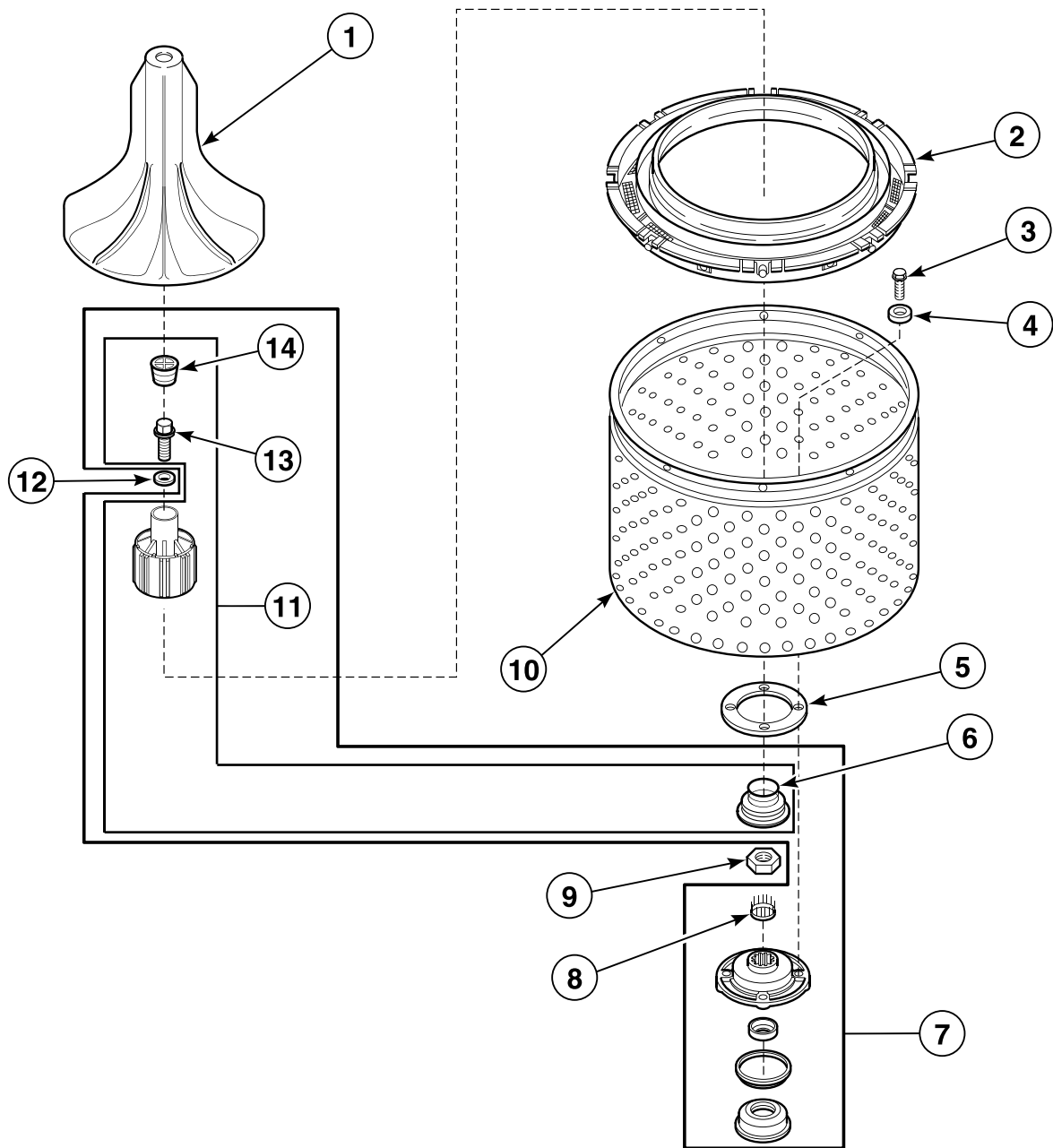


W125PZ3B\_35383

EA2111 P13



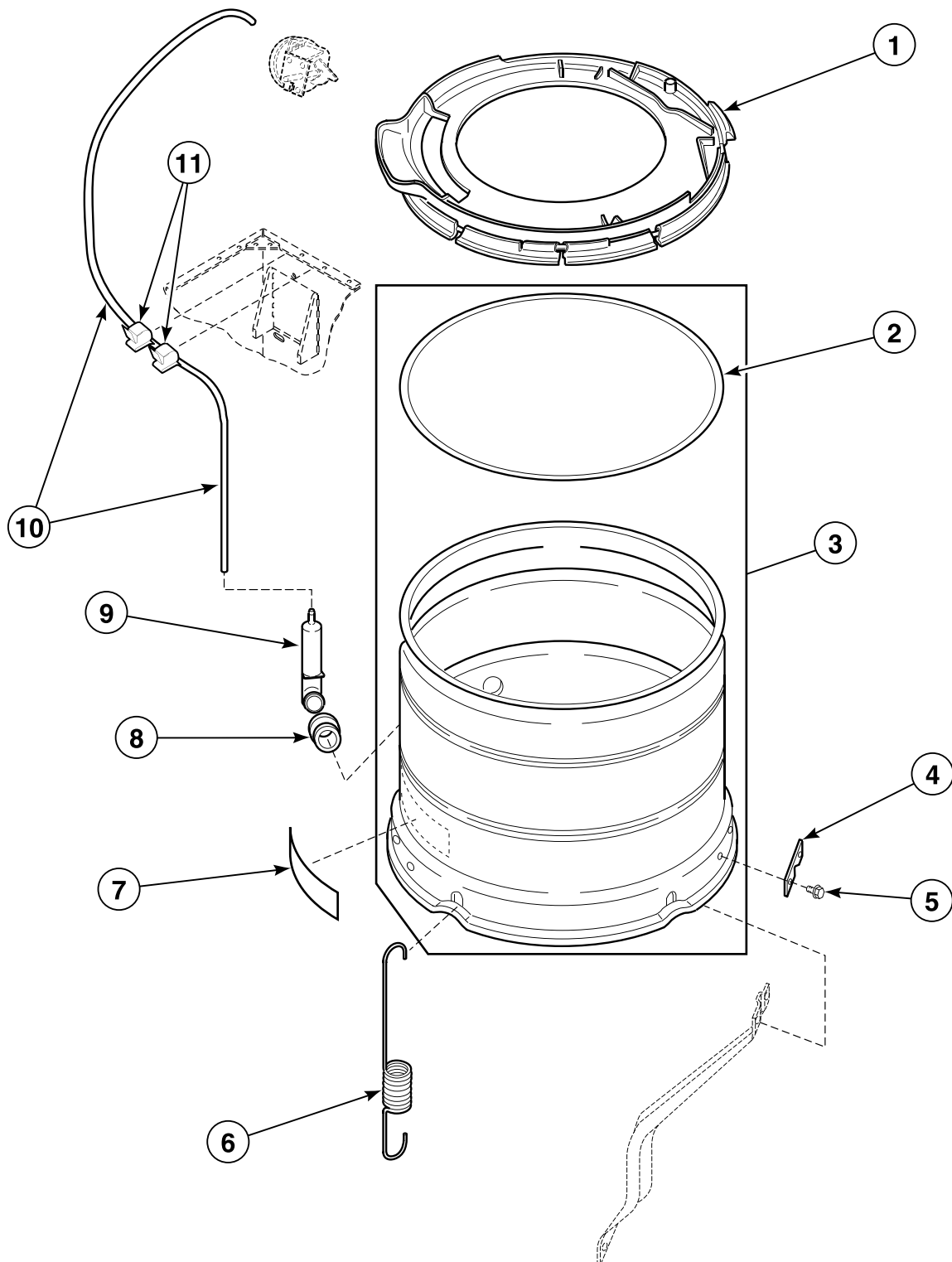
## Agitator, Drive Bell, Seal Kit, Washtub and Hub



W227P\_35383

EA2111 P14

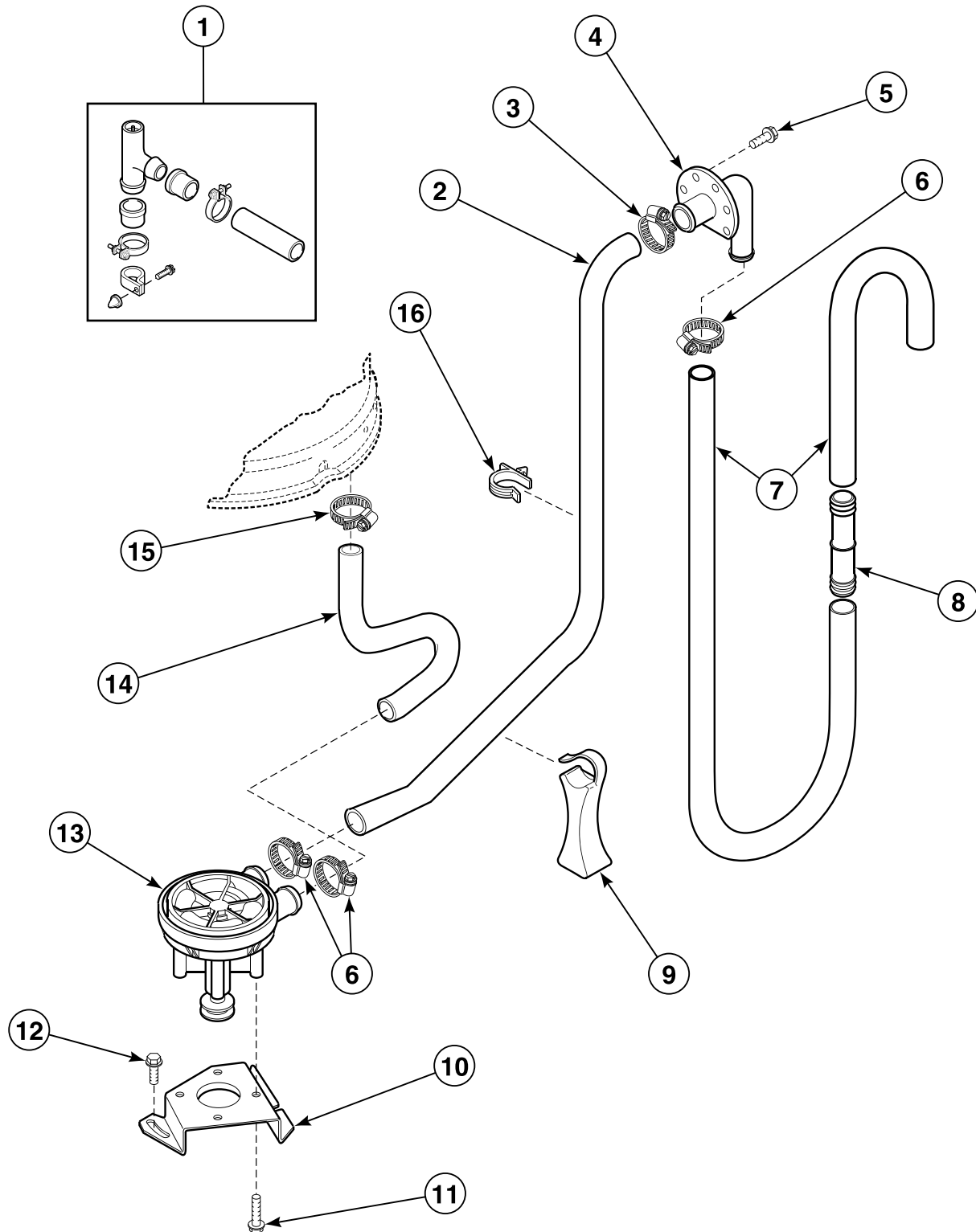
## Outer Tub, Cover and Pressure Hose



W182PZ3C\_35383

**EA2111 P15**

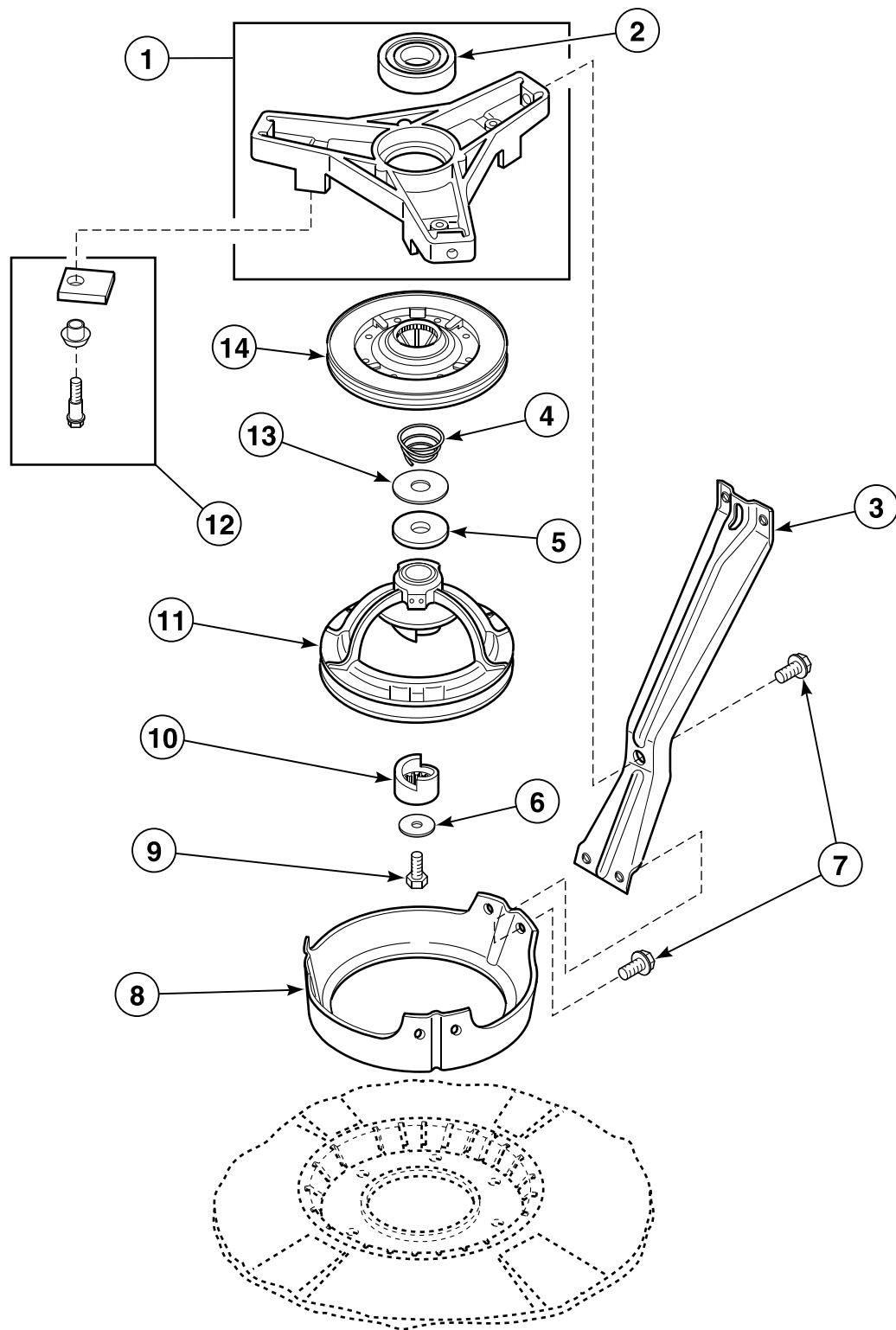
# Pump Assembly, Bracket, Hoses and Siphon Break Kit



W192P\_\_35383

**EA2111 P16**

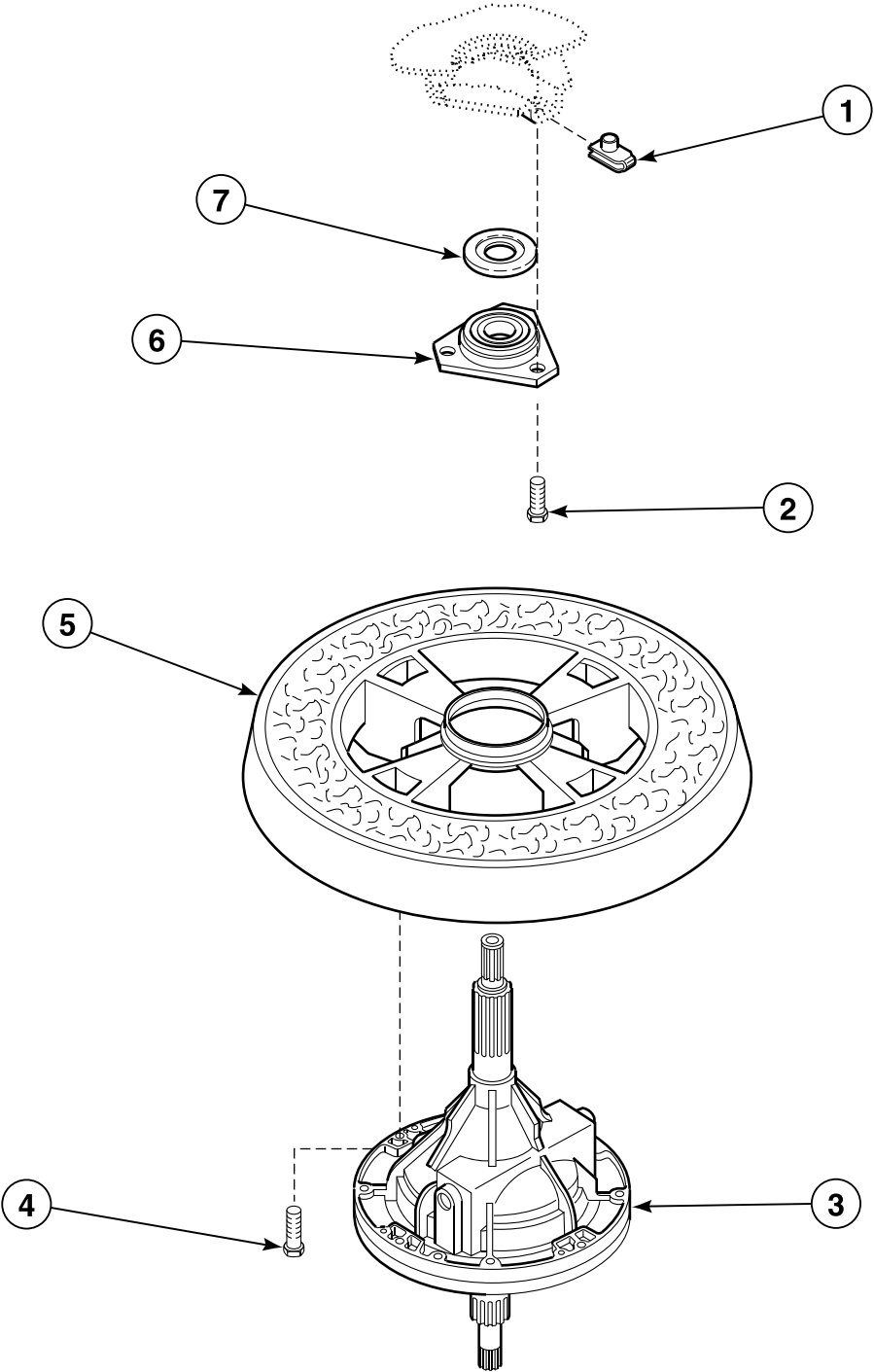
## Bearing Housing, Brake, Pulley and Pivot Dome



W130P\_35383

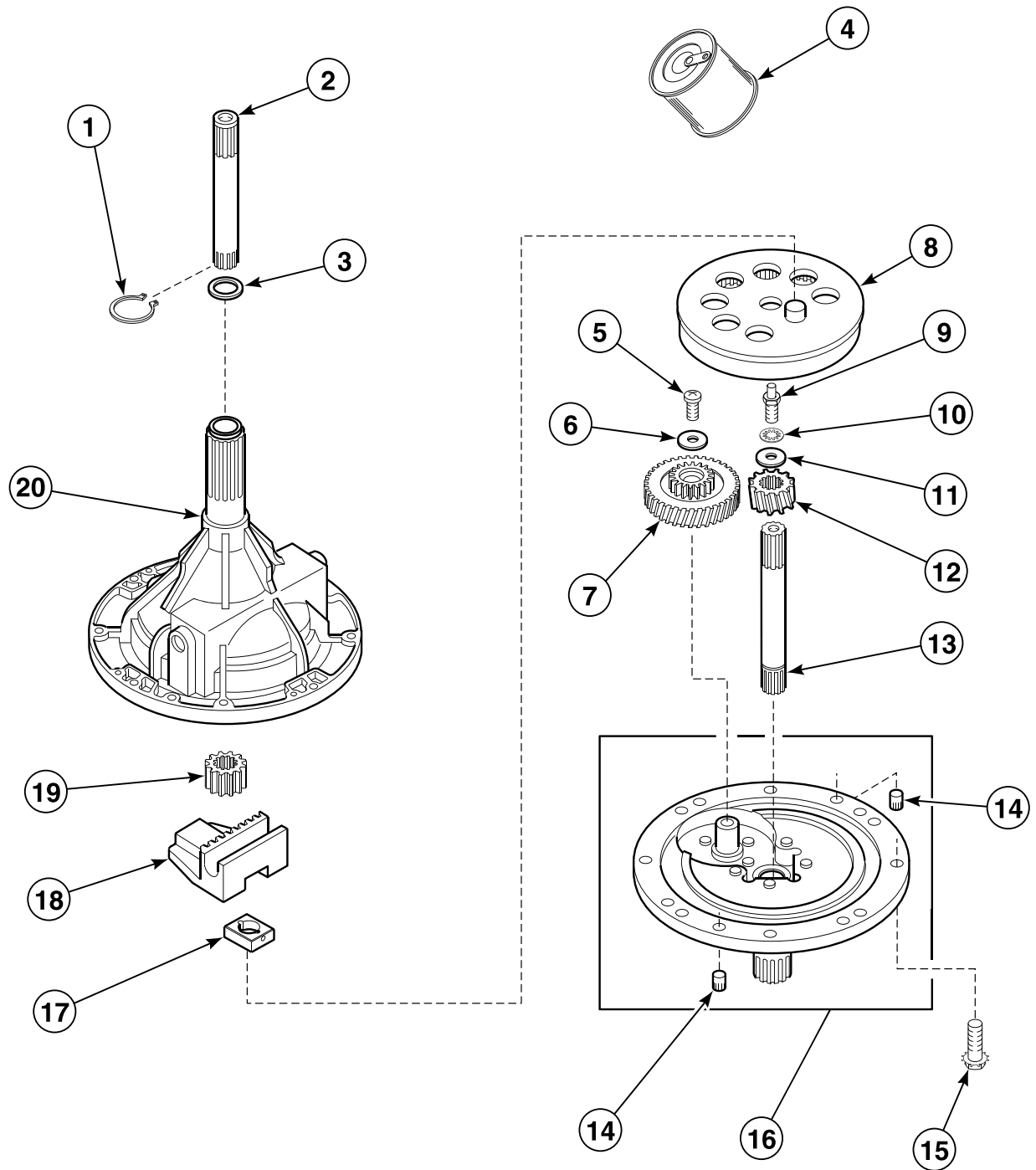
EA2111 P17

# Transmission Assembly and Balance Ring



W234PZ3C\_35383

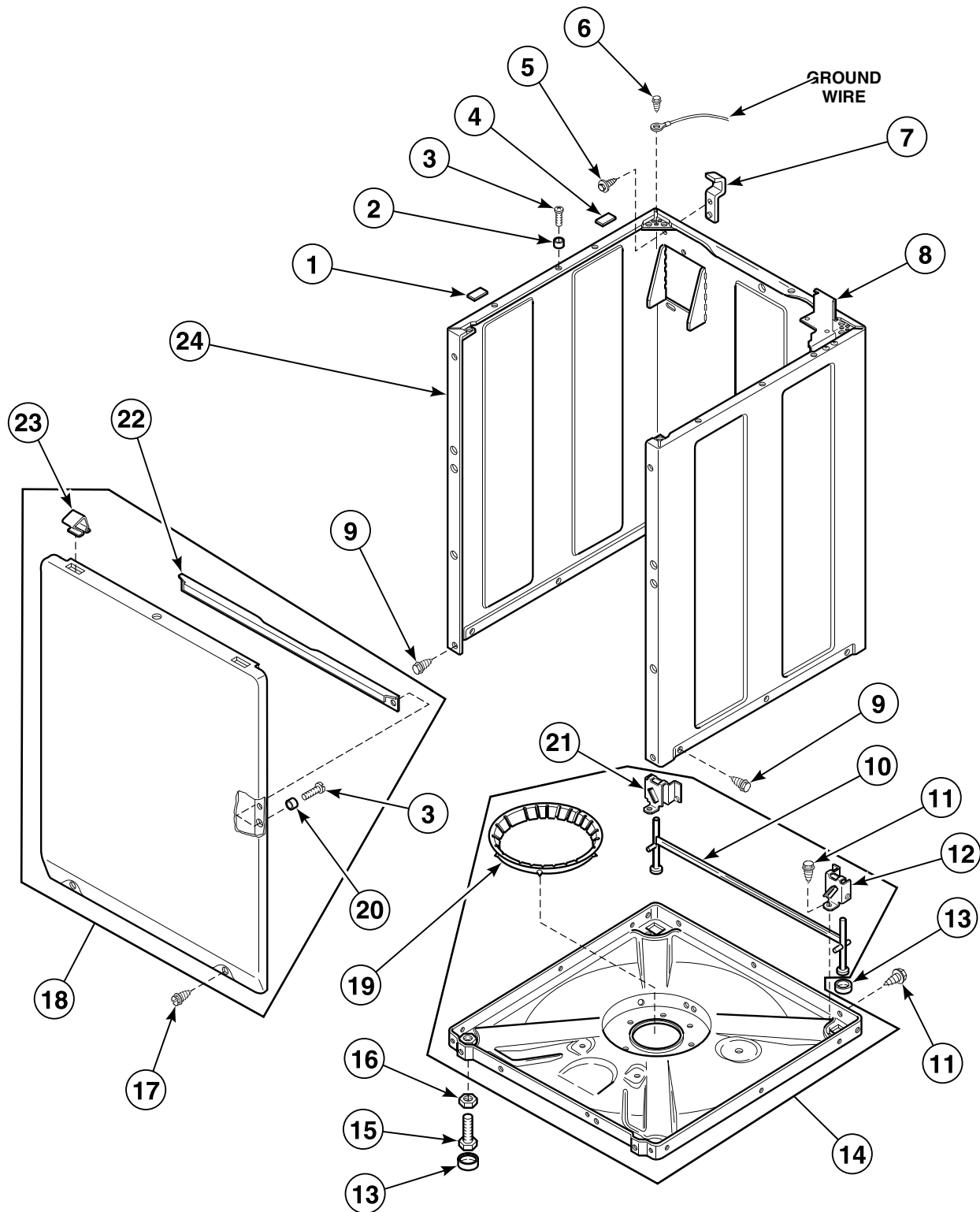
# Transmission Assembly



W132PZ3A\_35383

EA2111 P19

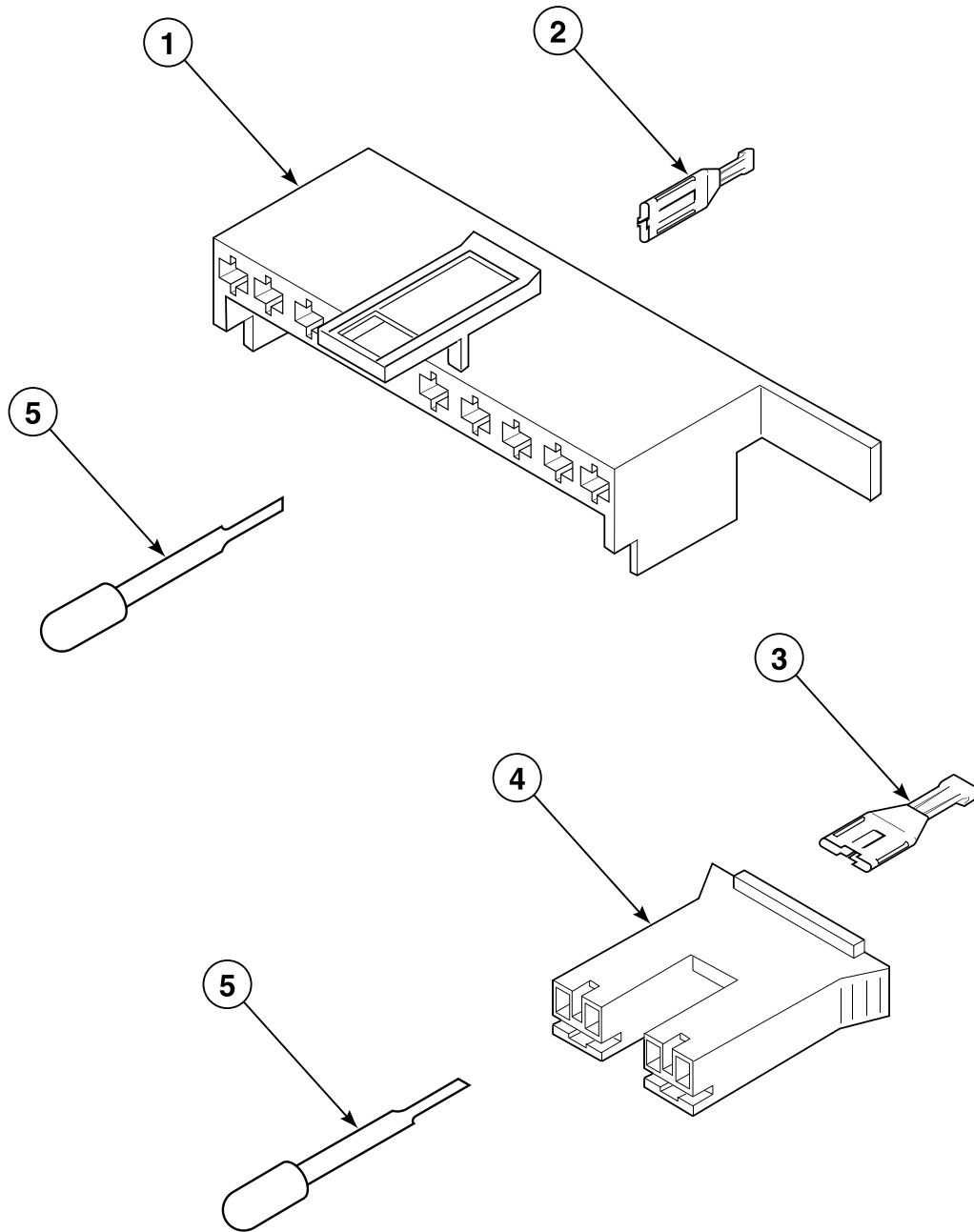
# Front Panel, Base Assembly and Cabinet Assembly



W133PZ3A\_35383

EA2111 P20

# Mixing Valve and Motor Disconnect Blocks, Terminals and Terminal Extractor Tool

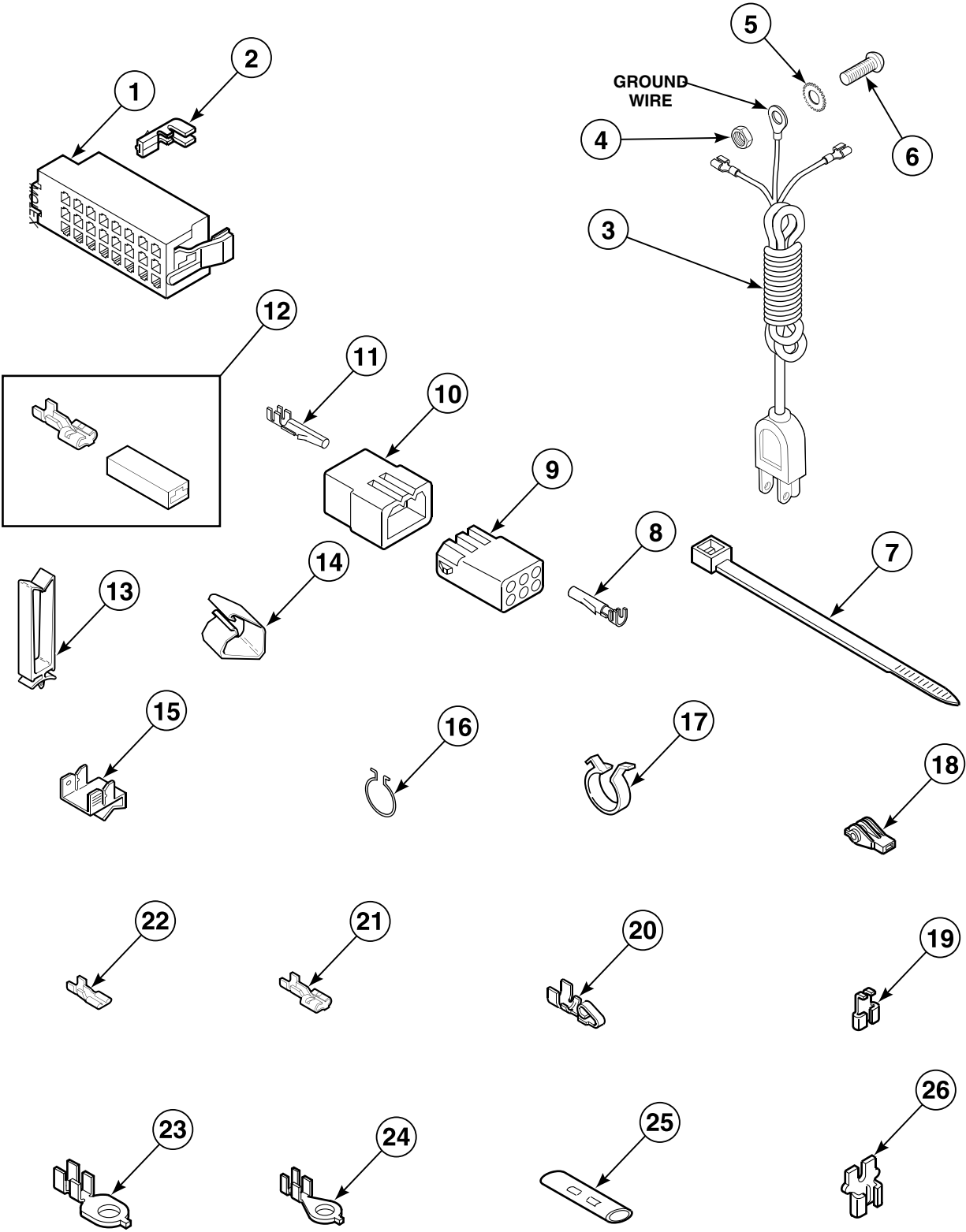


W134PZ3B\_35383

**EA2111 P21**

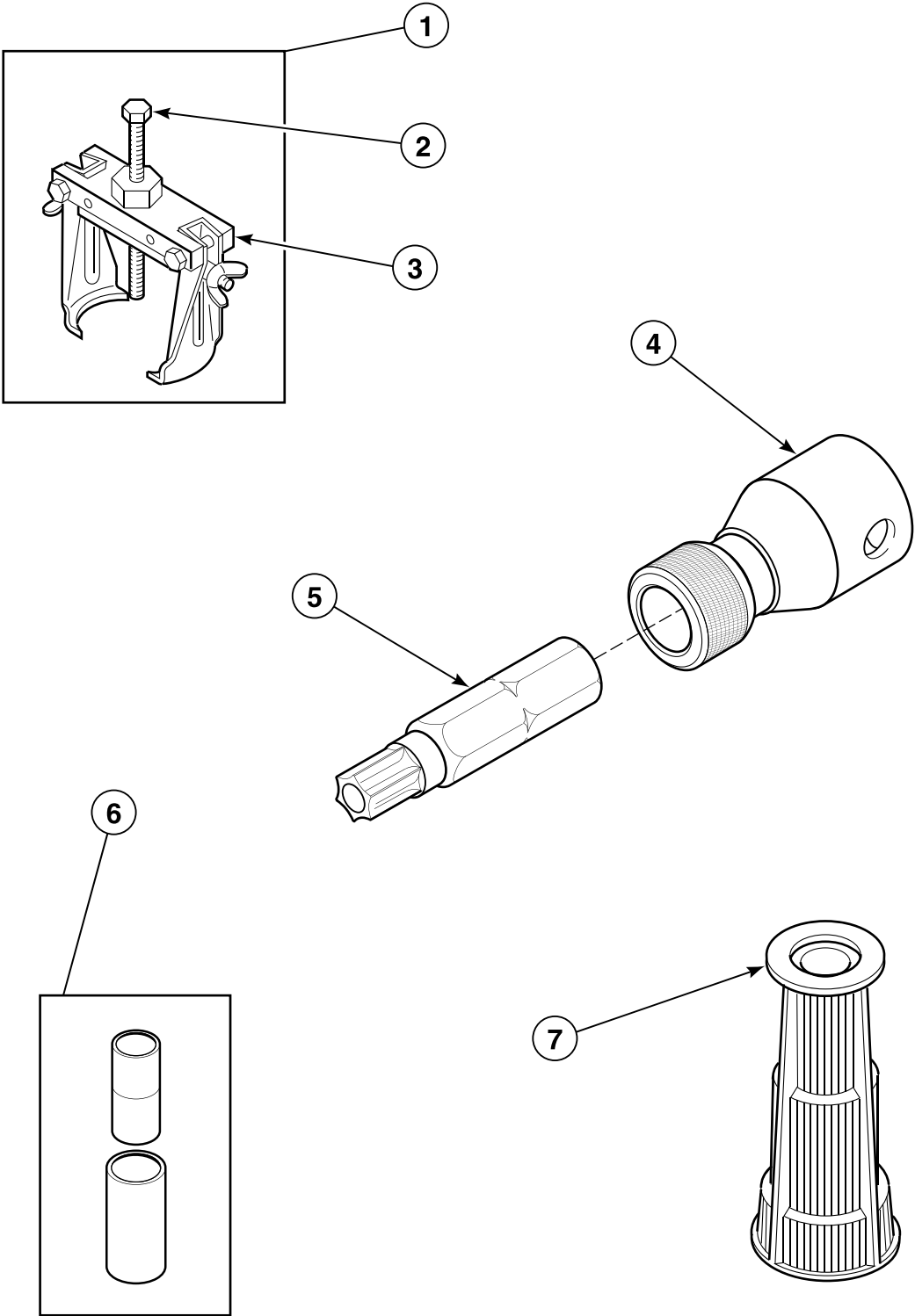


# Power Cord and Terminals



W135PZ3A\_35383

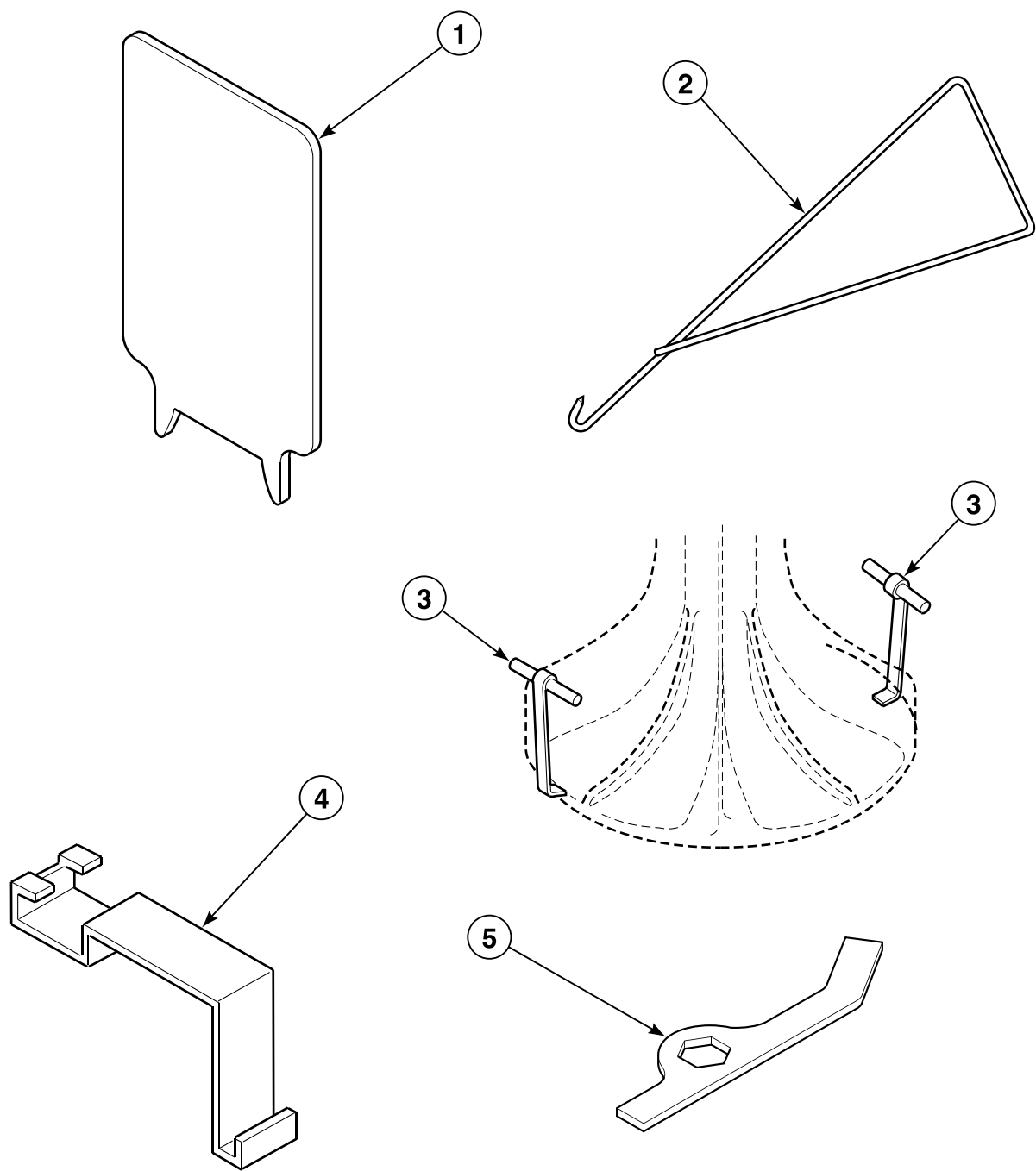
Special Tools (Drawing 1 of 2)



W399PZ3A\_35383

EA2111 P23

Special Tools (Drawing 2 of 2)



W137PZ3B\_35383

EA2111 P24