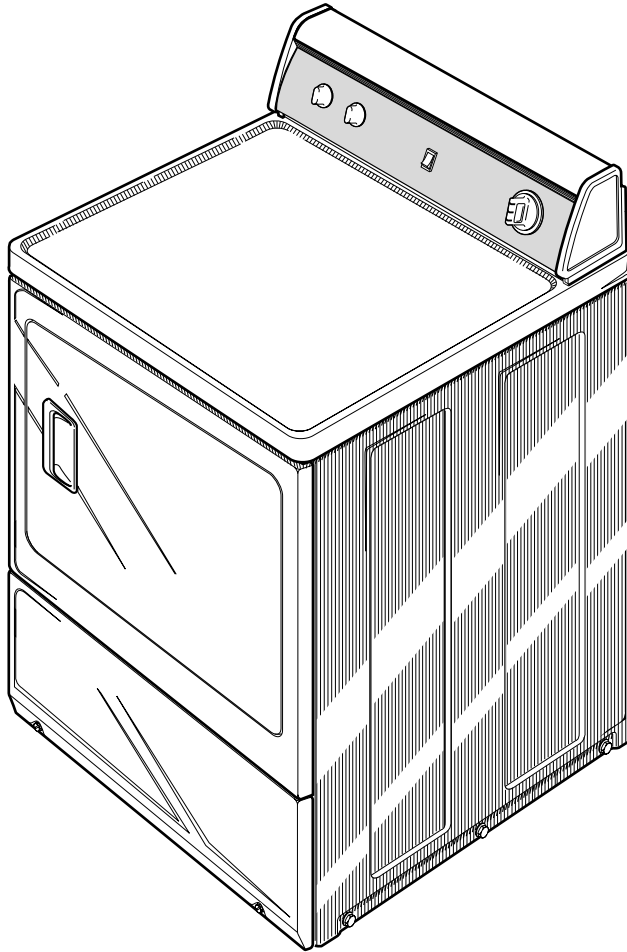


Dryers

Nonmetered **LGS1**

Parts

See Page 3 for Model Numbers



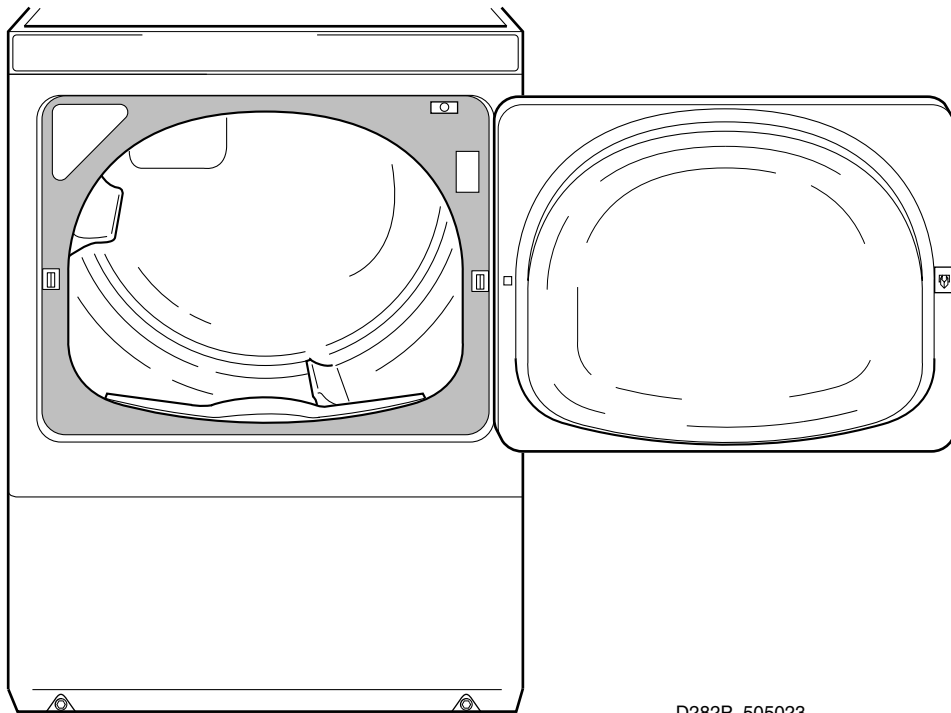
D281P_505023

Parts Ordering Information

If literature or replacement parts are required, contact the source from whom the machine was purchased or contact Alliance Laundry Systems at for the name and address of the nearest authorized parts distributor.

Nameplate Location

When calling or writing about your product, be sure to mention model and serial numbers. Model and serial numbers are located on nameplate(s) as shown.



D282P_505023

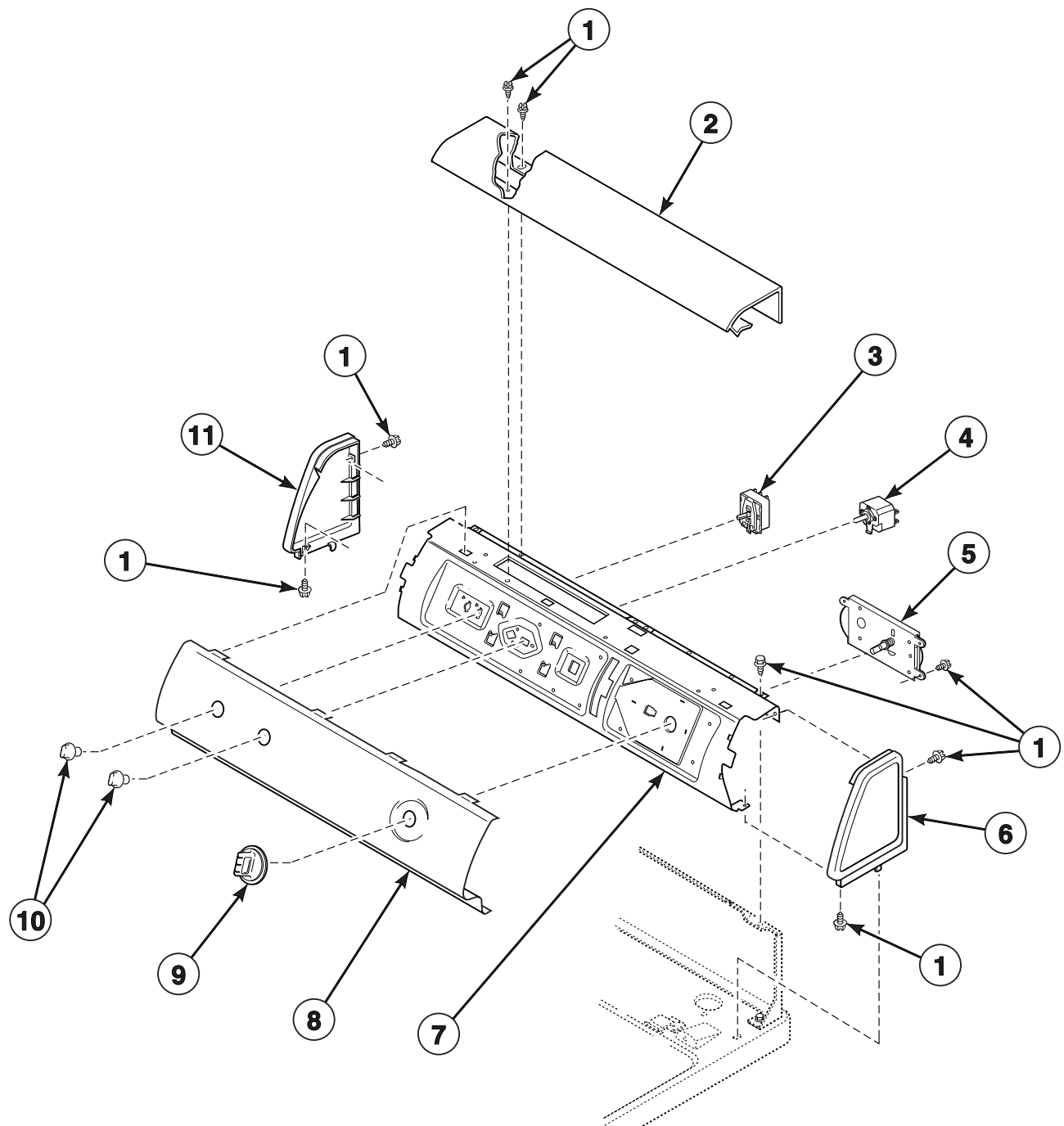
Model Identification

Information in this manual is applicable to these dryer models:

LEB07A*-1709	LGK33A*-3058
LEK33A*-4350	LGS19A*-3088
LES19A*-3000	LGS33A*-3000
LES19A*-4500	LGS33A*-3058
LES33A*-3000	LGS33A*-3080
LES33A*-3300	LGS33A*B3013
LES33A*-4350	LGS33A*B3080
LES33A*-4562	LGY47A*-1109
LES33A*B3018	LGZ33A*-3000
LEY47A*-1709	LGZ33A*B3013
LEZ33A*-3000	
LEZ33A*B3018	

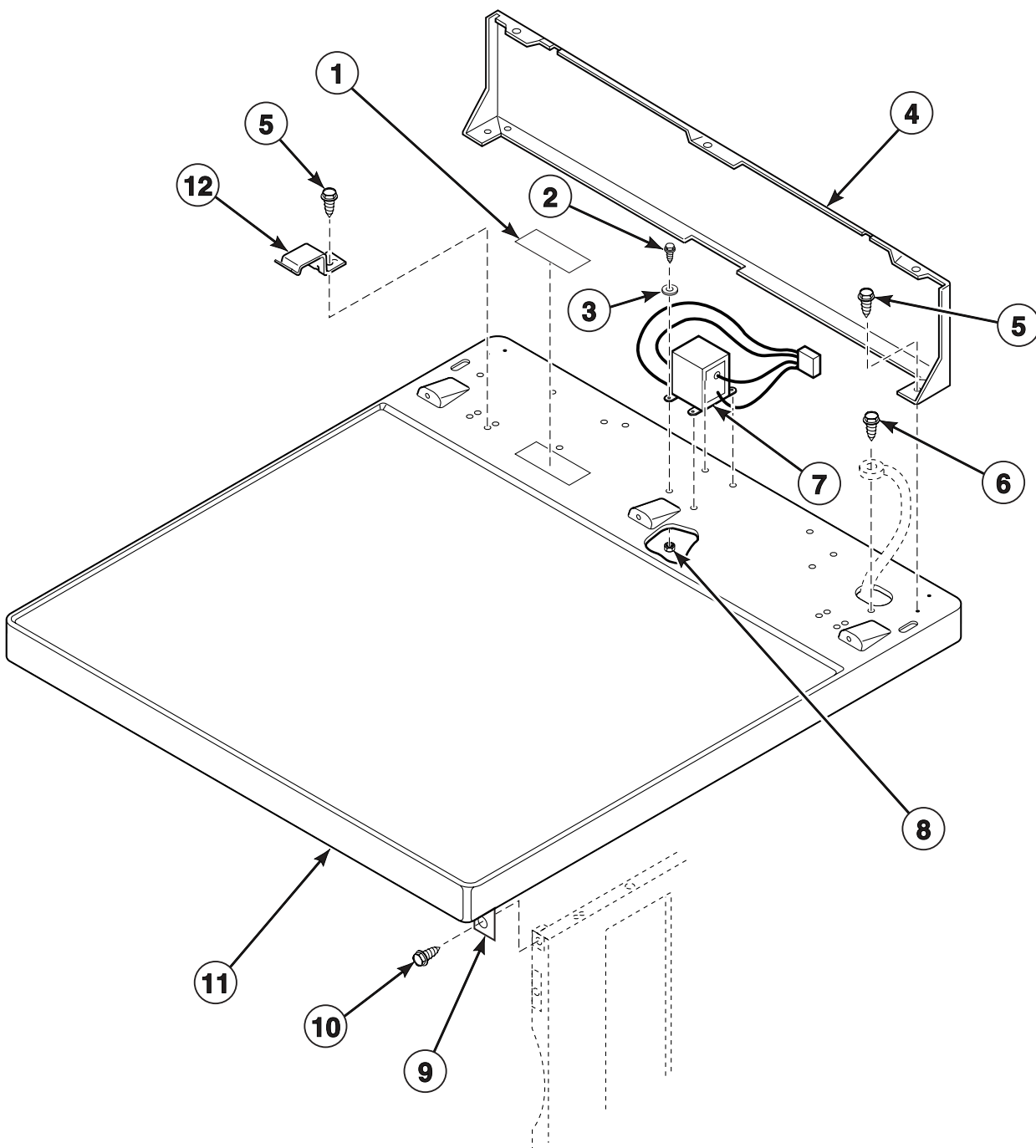
* Add Letter To Designate Color. L - Almond W - White

Graphic Panel, Control Hood and Controls



D378P_505023

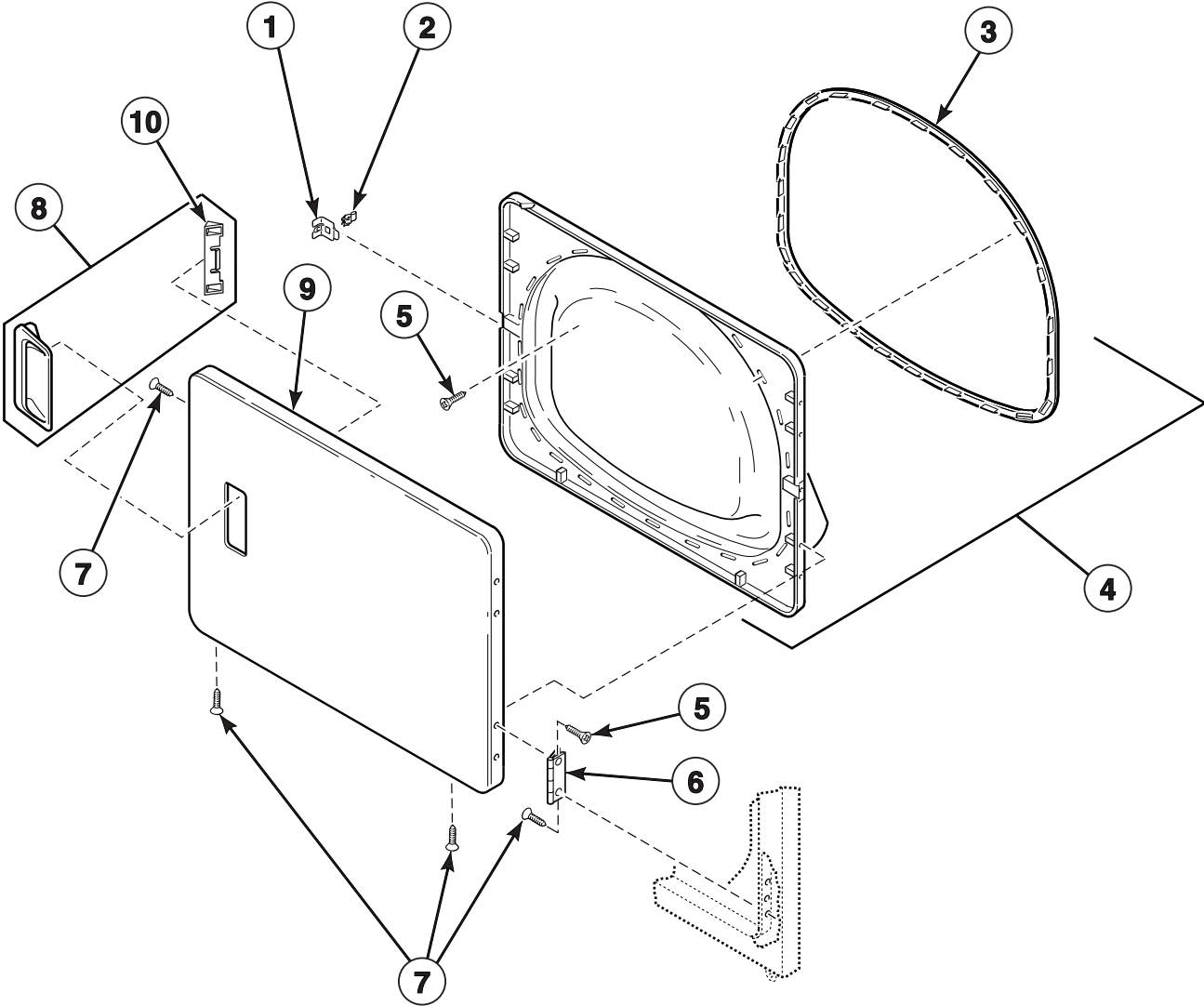
Cabinet Top and Control Hood Rear Panel



D327P_505023

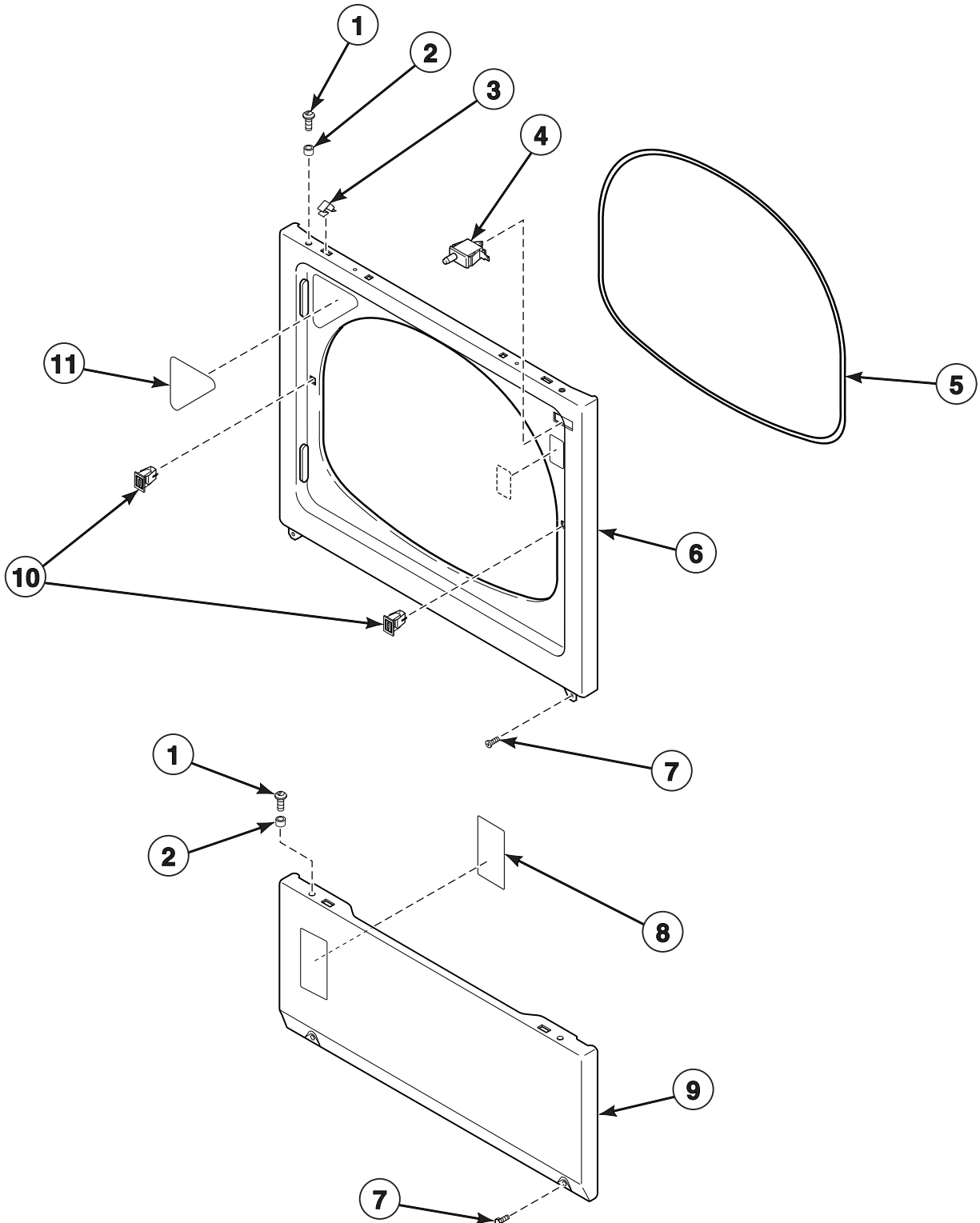
LGS1 P2

Loading Door



DRY1737P_505023

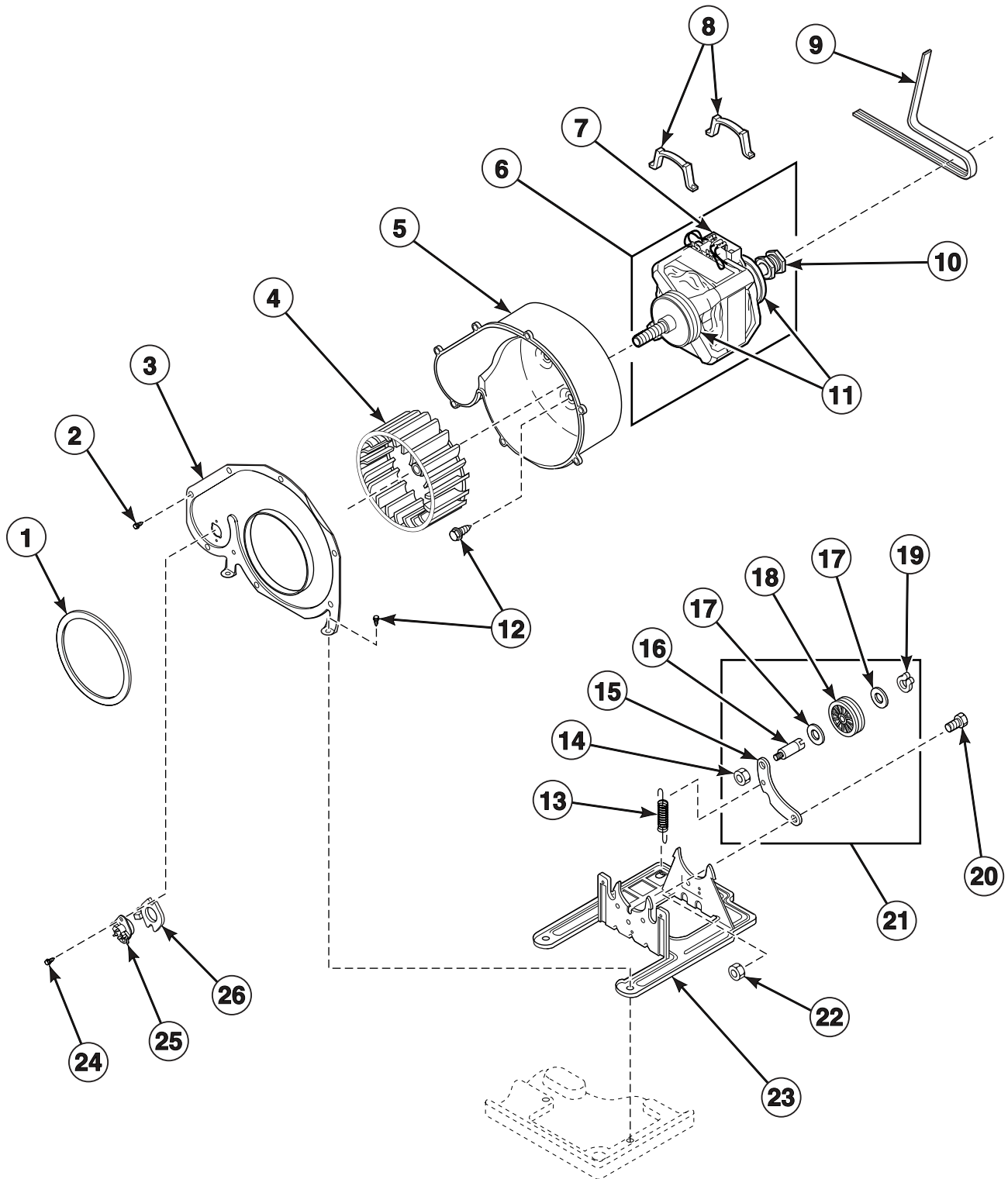
Access Panel, Front Panel and Seal



D288PZ3A_505023

LGS1 P4

Motor, Exhaust Fan and Belt

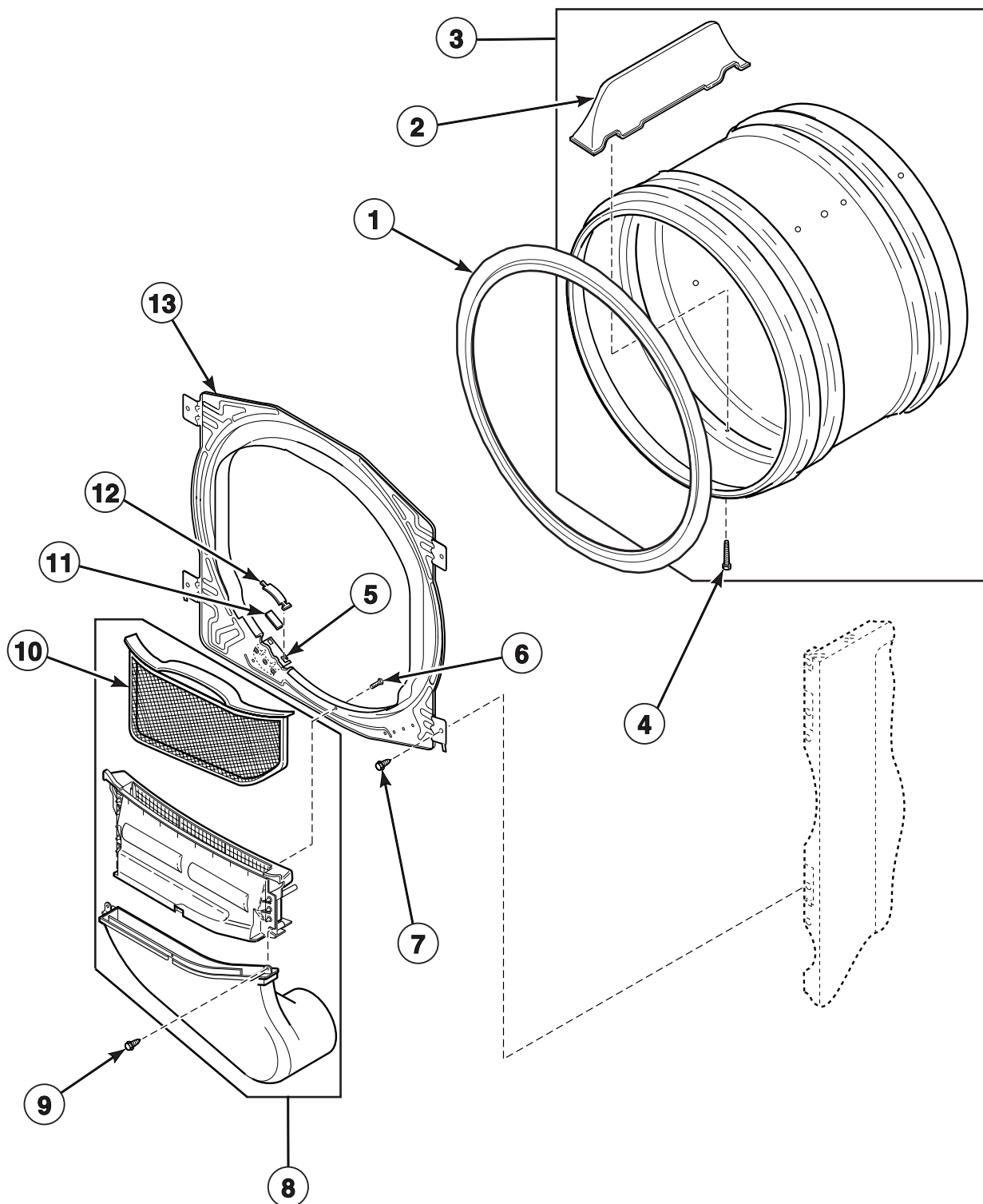


D289P_505023

LGS1 P5

Front Bulkhead, Air Duct, Cylinder and Removable Lint Filter

All Models Except LEB07A*-1709, LEY47A*-1709 and LGY47A*-1109

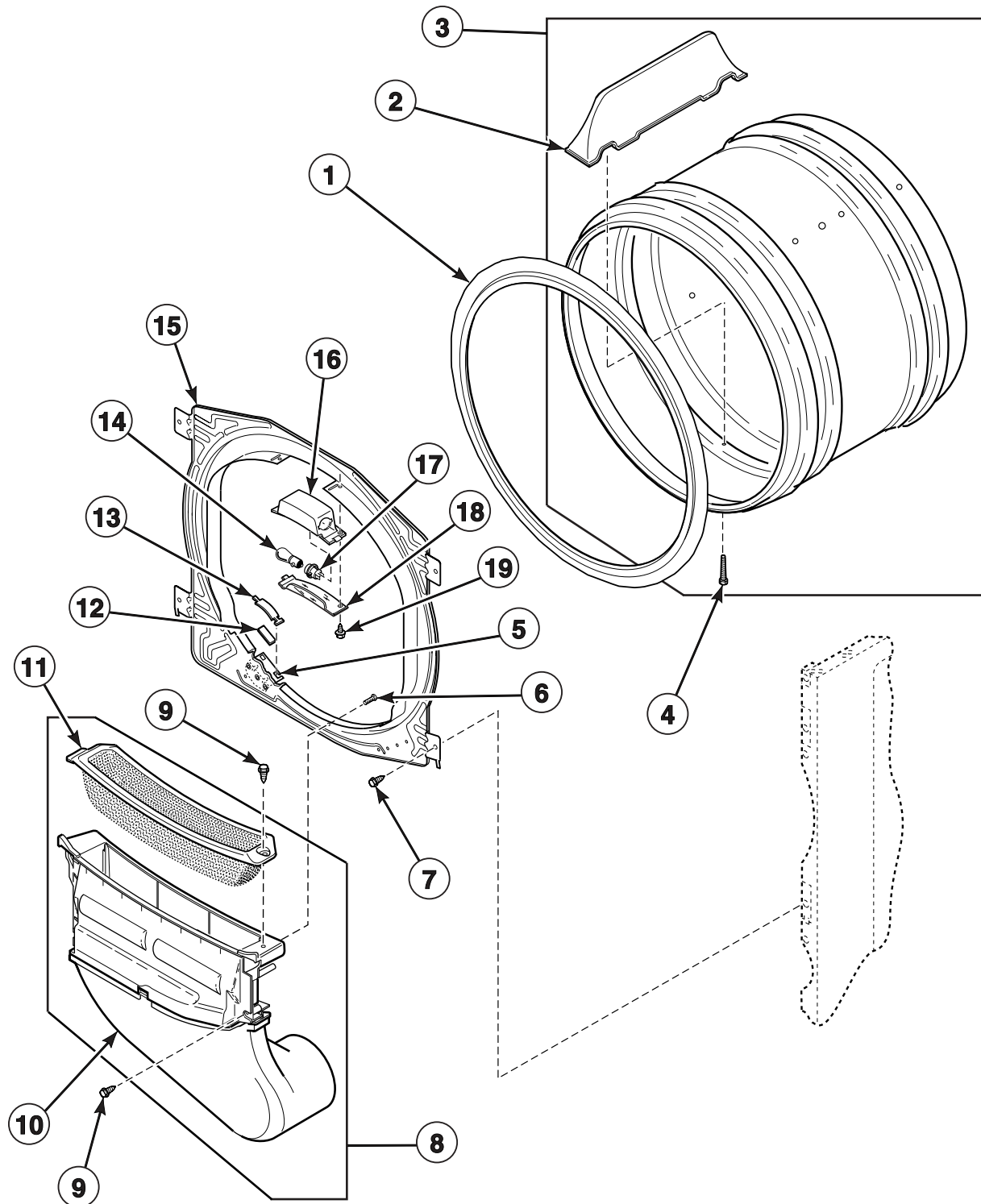


D373P_505023

LGS1 P6

Front Bulkhead, Air Duct, Cylinder, and Secured Lint Filter

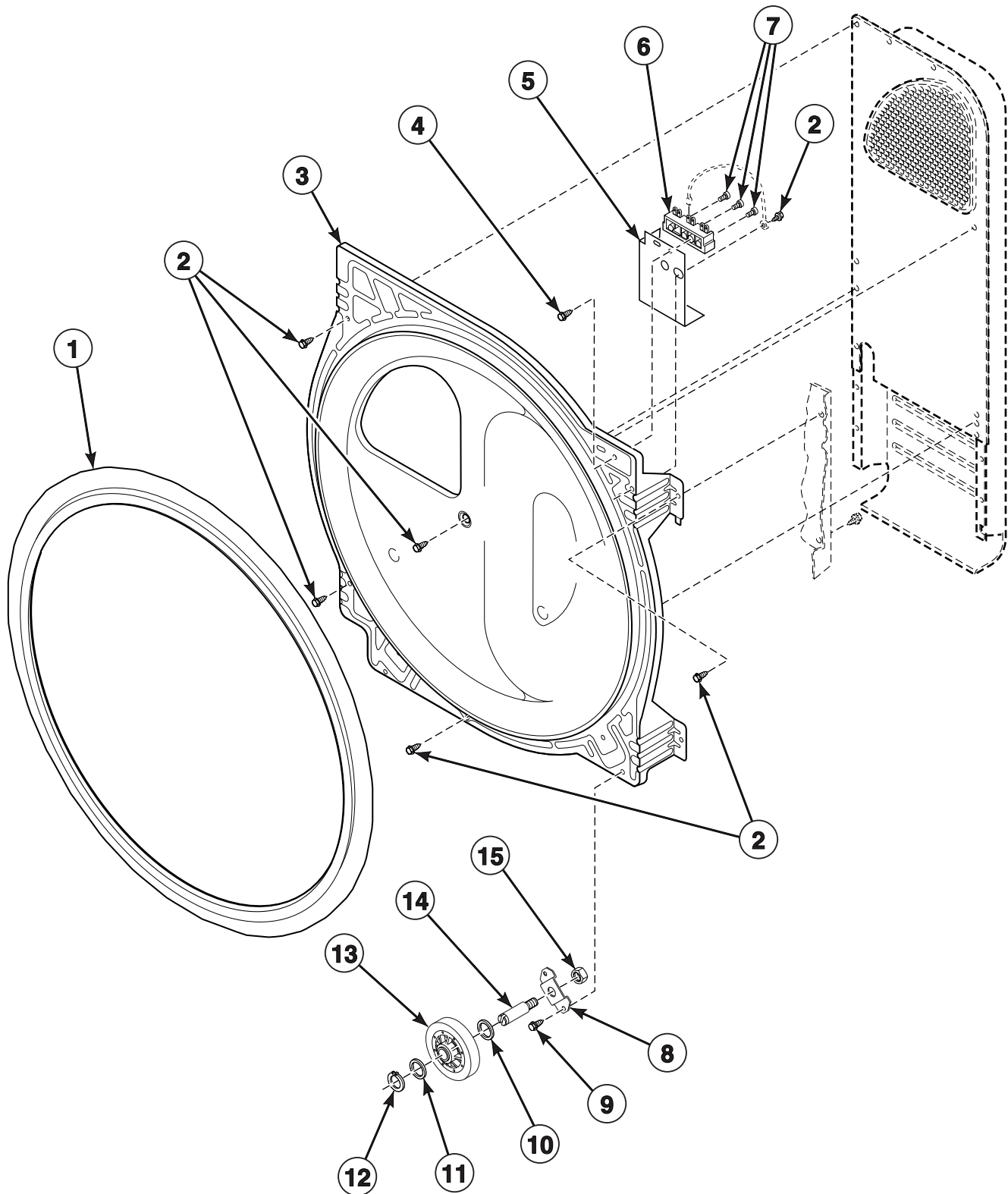
Models LEB07A*-1709, LEY47A*-1709 and LGY47A*-1109



D382P_505023

LGS1 P7

Rear Bulkhead, Felt Seal, Cylinder Roller and Terminal Block

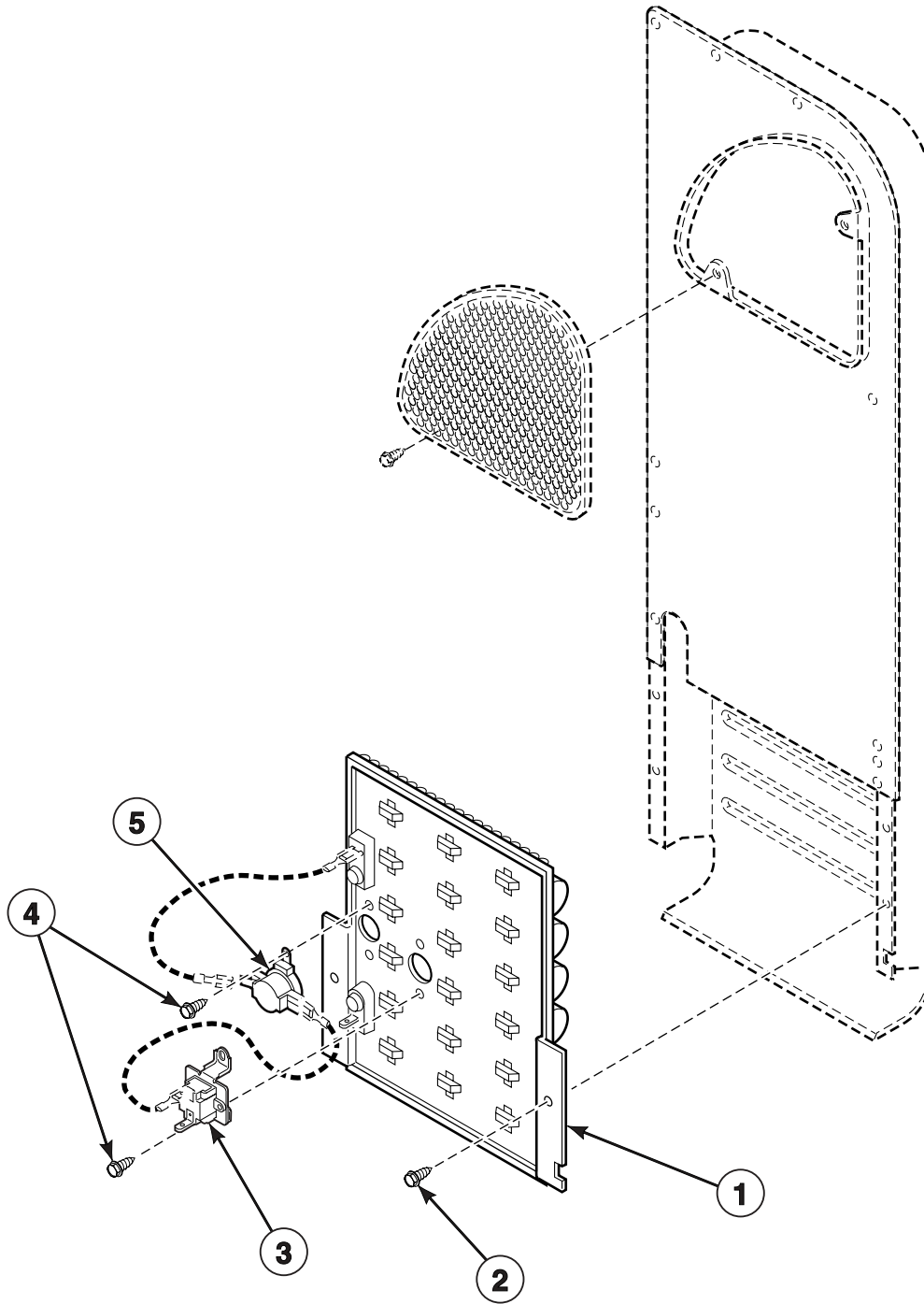


D291P_505023

LGS1 P8

Heater Duct and Element Assembly

Electric Model Dryers

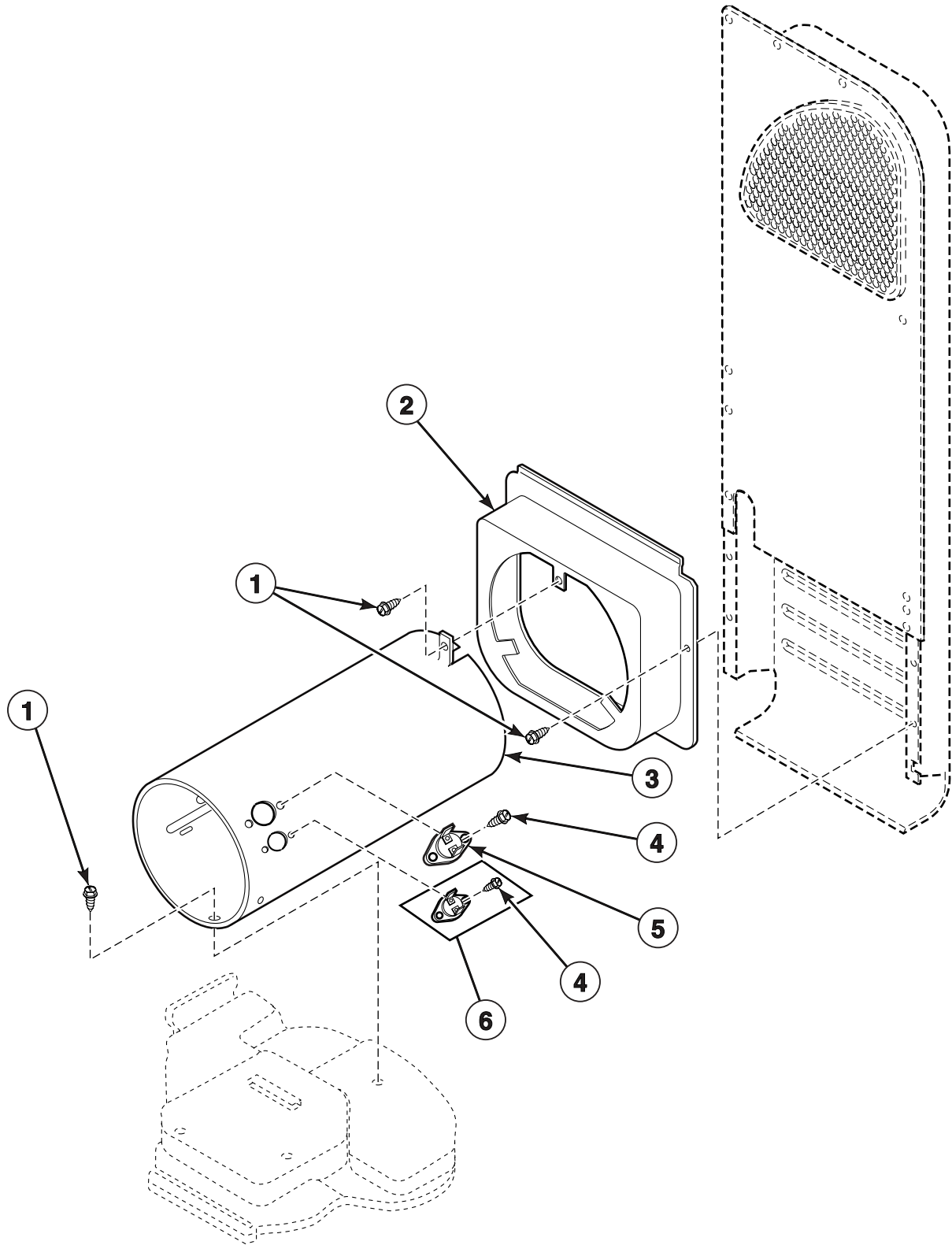


D292P_505023

LGS1 P9

Heater Duct Assembly

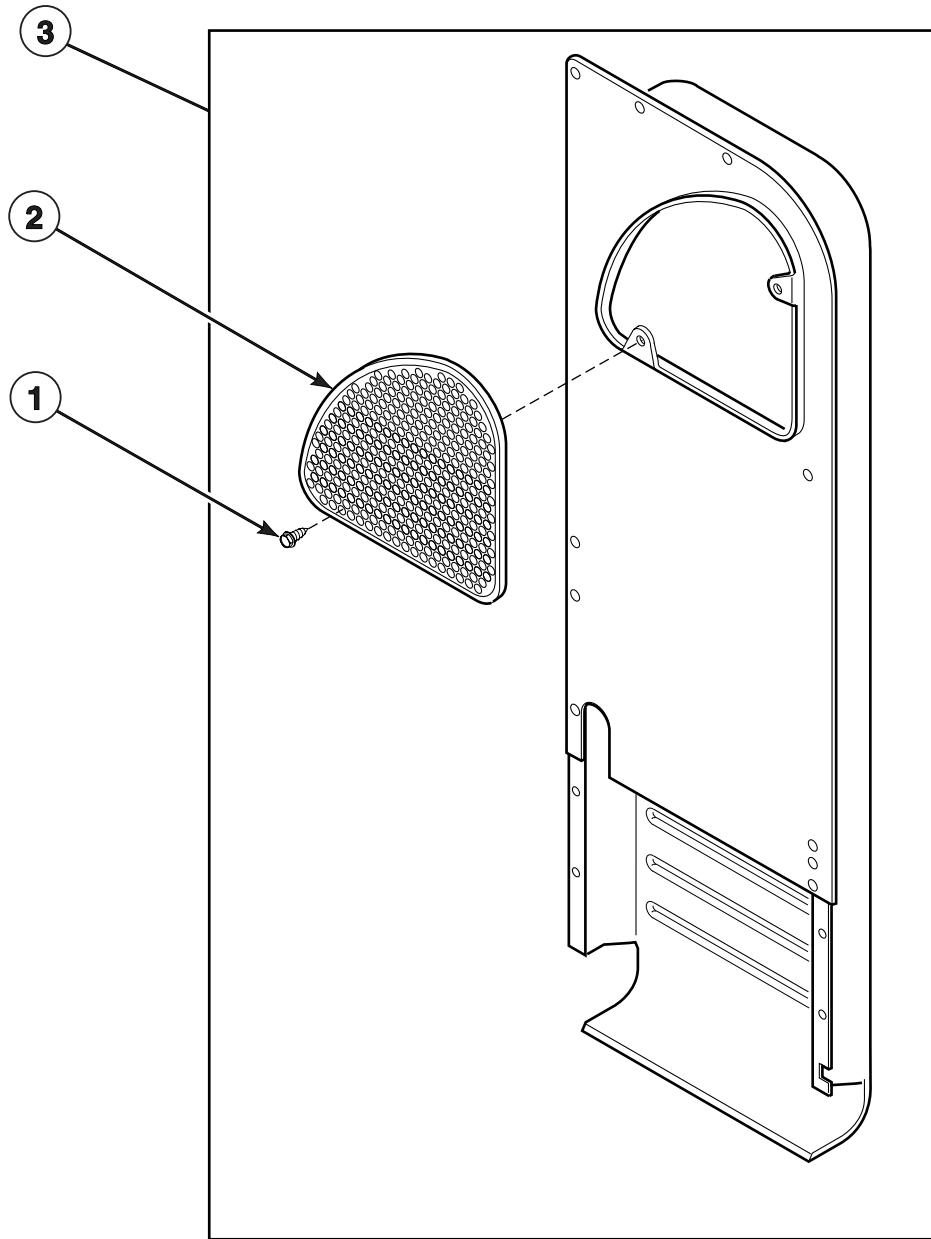
Gas Model Dryers



D328P_505023

LGS1 P10

Heater Duct Assembly Replacement

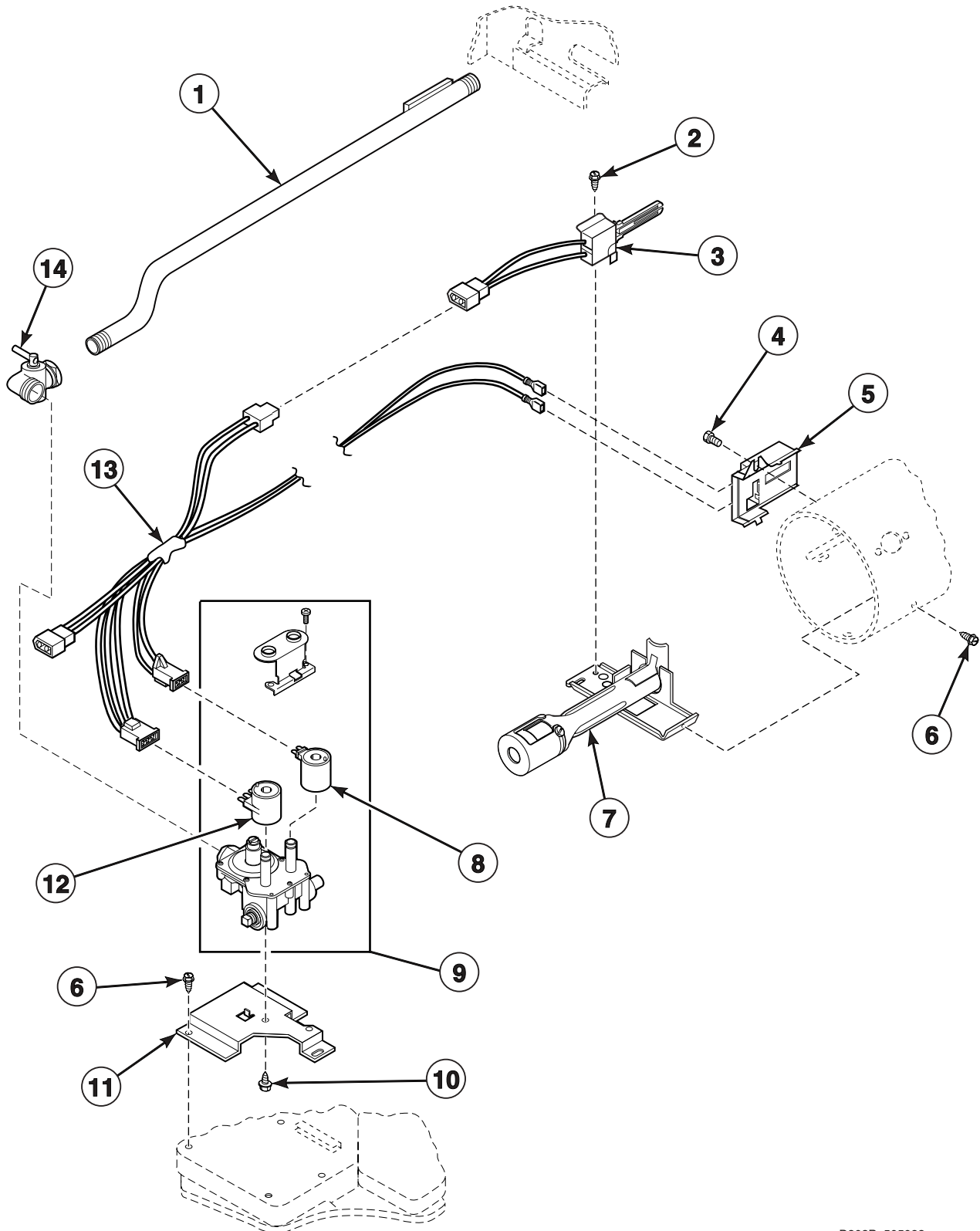


D294P_505023

LGS1 P11

Gas Valve, Igniter and Gas Conversion Kits

Gas Dryer Models LGS19A*-3088, LGS33A*-3000, LGS33A*-3080, LGY47A*-1109 and LGZ33A*-3000

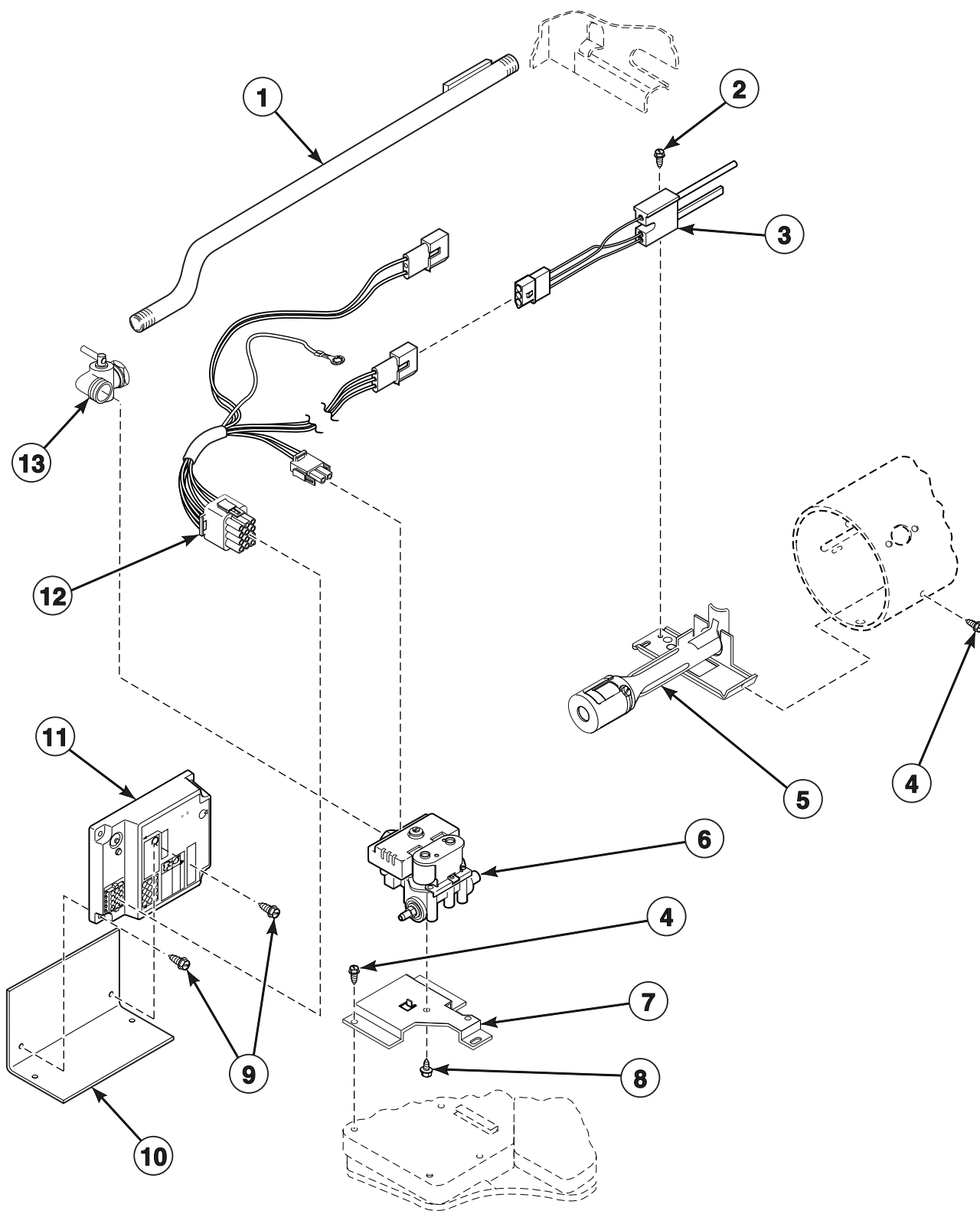


D303P_505023

LGS1 P12

Gas Valve, Igniter, Ignition Control and Gas Conversion Kits

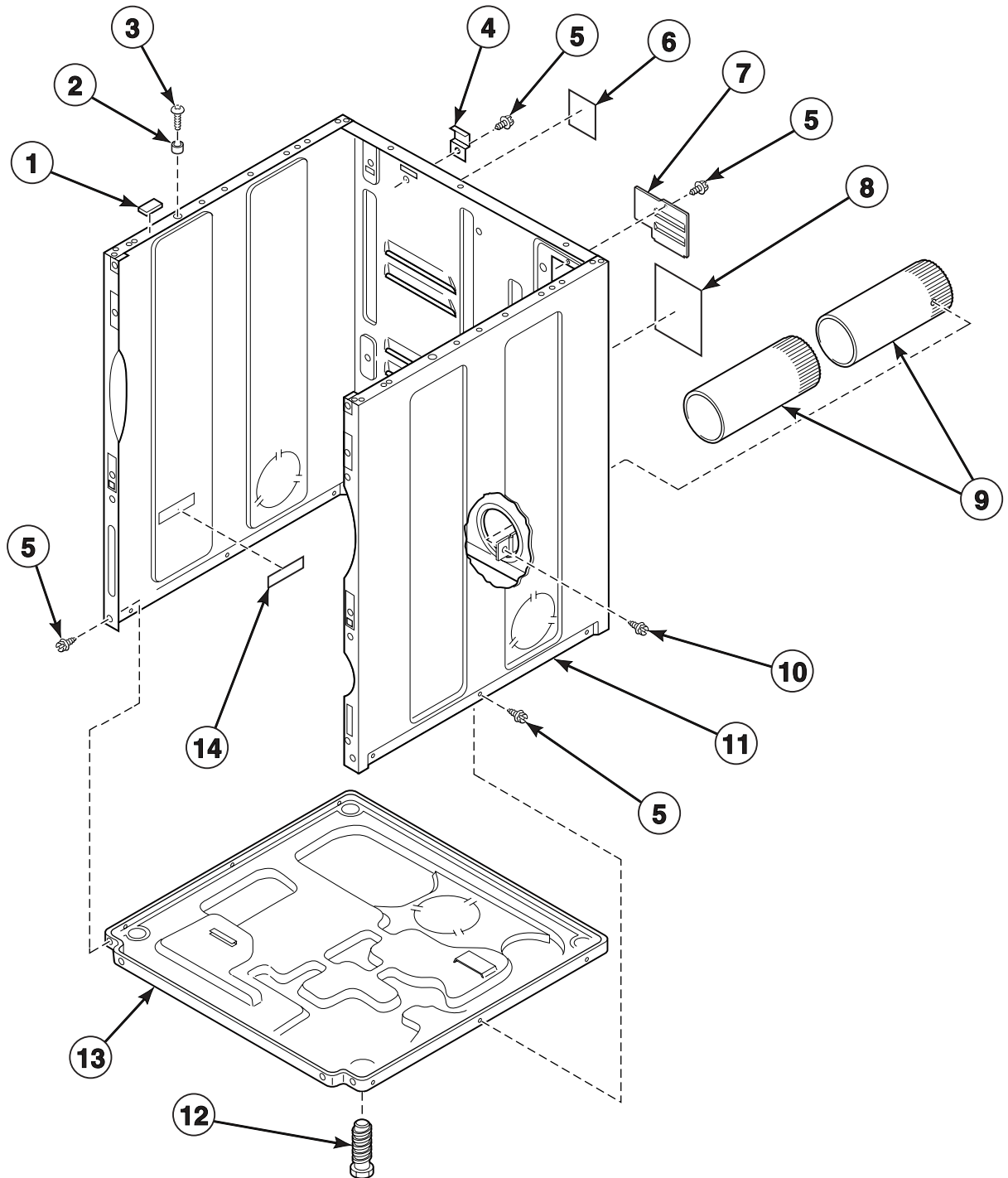
Gas Dryer Models LGS33A*-3058, LGS33A*B3013, LGS33A*B3080, LGZ33A*B3013 and LGK33A*-3058



D371P_505023

LGS1 P13

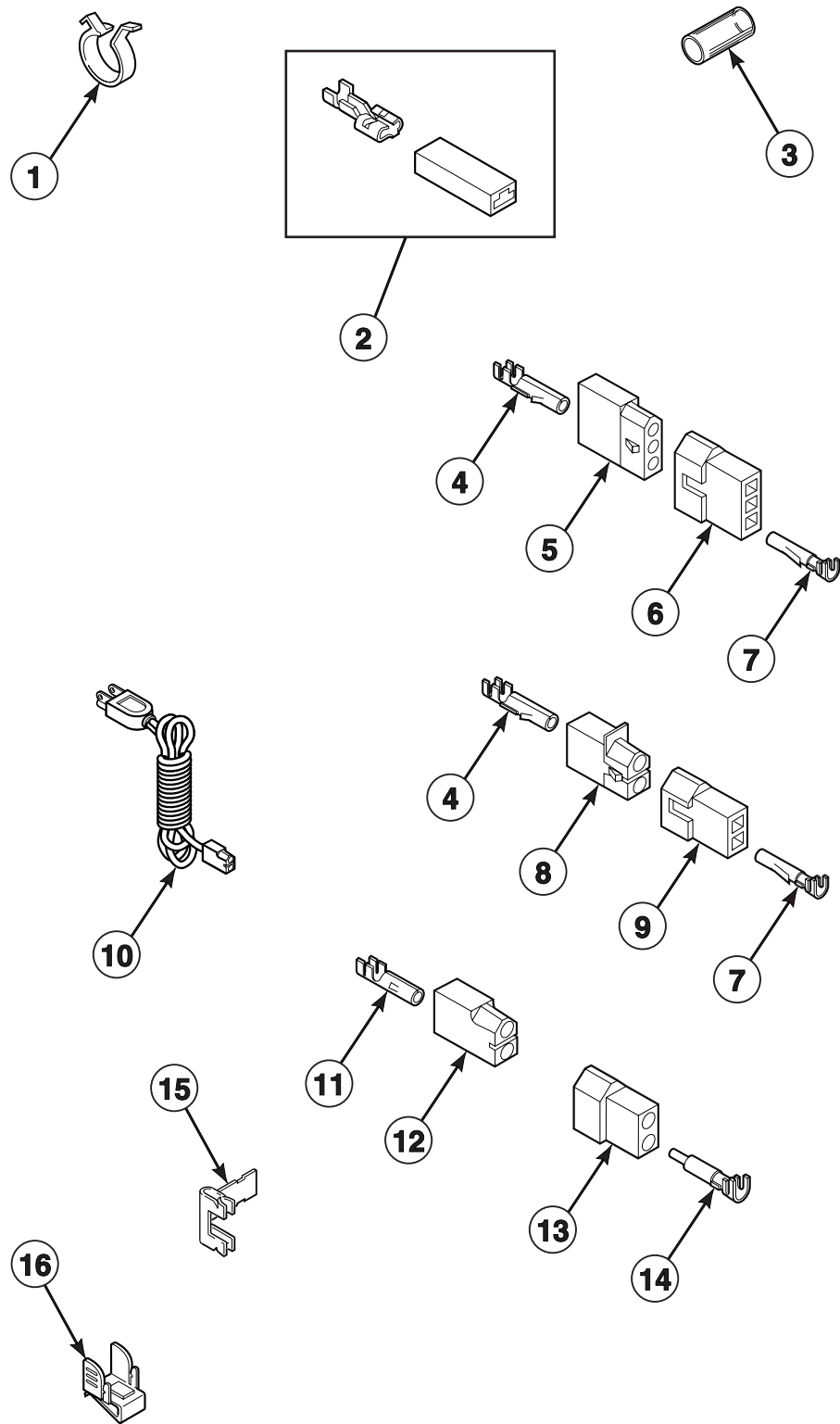
Cabinet, Exhaust Duct and Base



D296P_505023

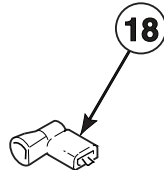
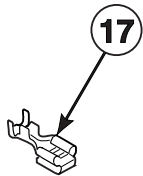
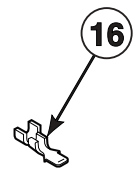
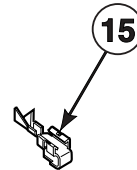
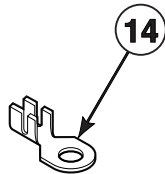
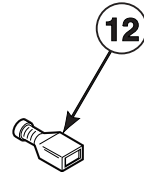
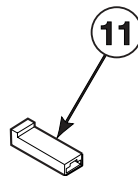
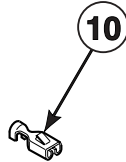
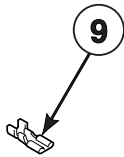
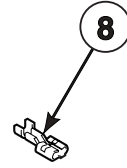
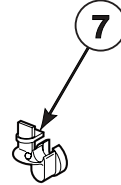
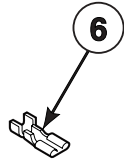
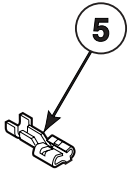
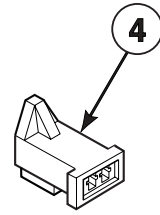
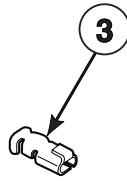
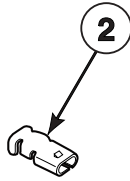
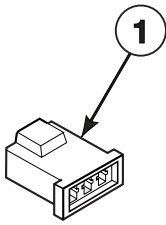
LGS1 P14

Terminals and Clips



D381P_505023

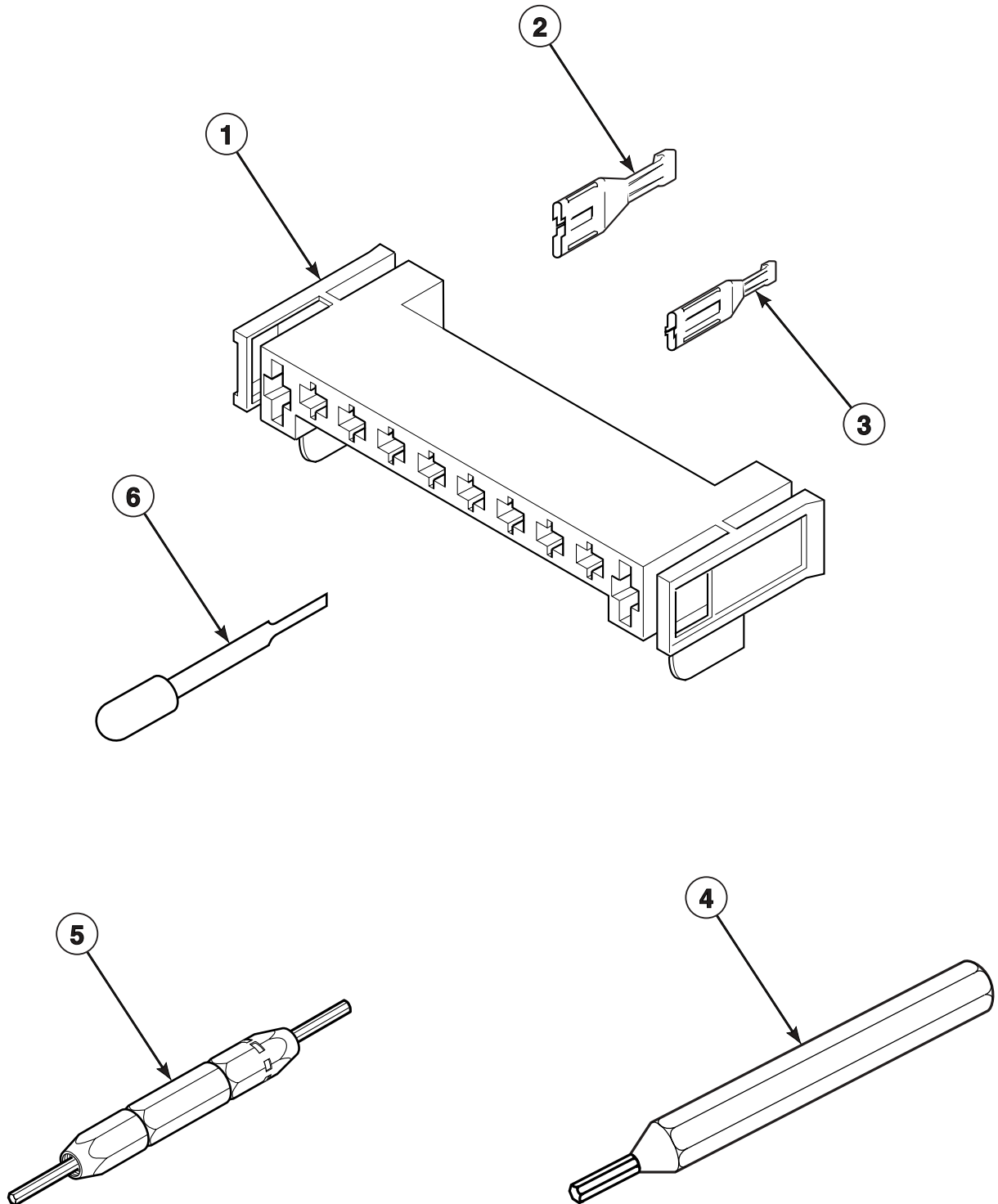
Terminals



D379P_505023

LGS1 P16

Motor Connection Block, Terminal Extractor Tools



D301P_505023

LGS1 P17