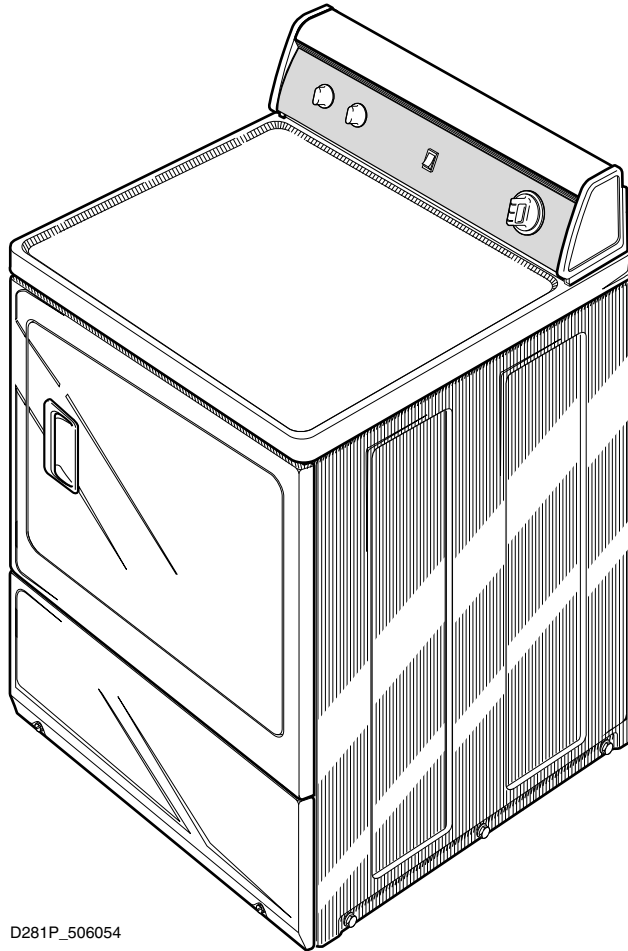


Homestyle Dryer LGS2

Refer to Page 3 for Model Numbers

Parts



D281P_506054

Parts Ordering Information

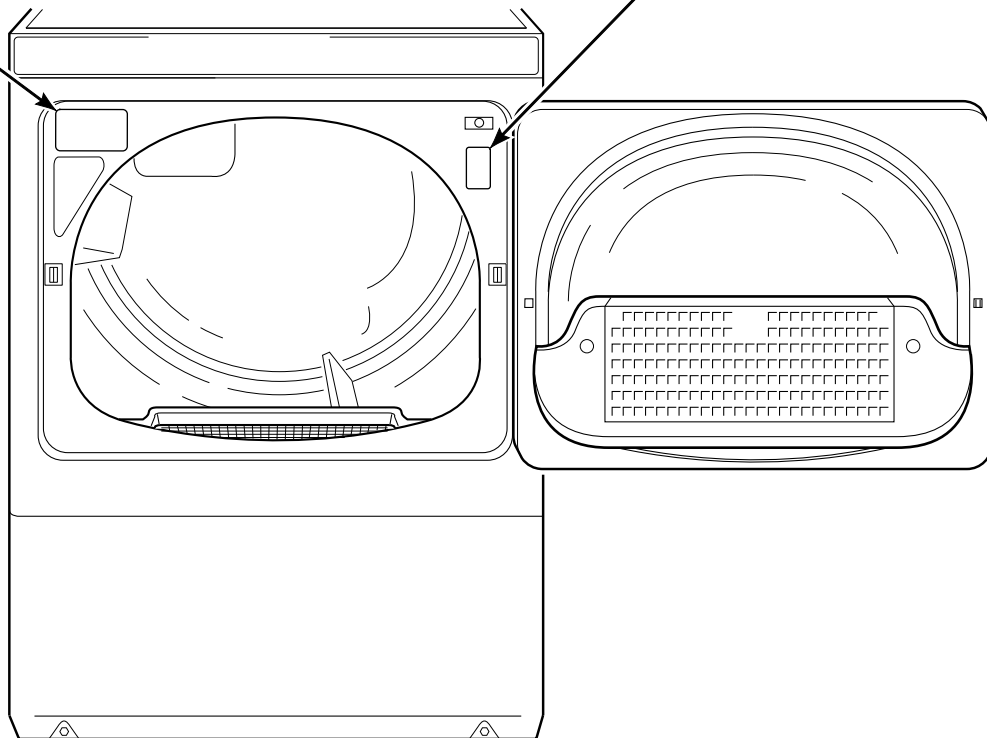
If literature or replacement parts are required, contact the source from whom the machine was purchased or contact Alliance Laundry Systems at for the name and address of the nearest authorized parts distributor.

Nameplate Location

When calling or writing about your product, be sure to mention model and serial numbers. Model and serial numbers are located on nameplate(s) as shown.

NAMEPLATE
(Models starting Serial No. 1206025810)

NAMEPLATE
(Models through Serial No. 1206025809)



DRY2283P_506054

Model Identification

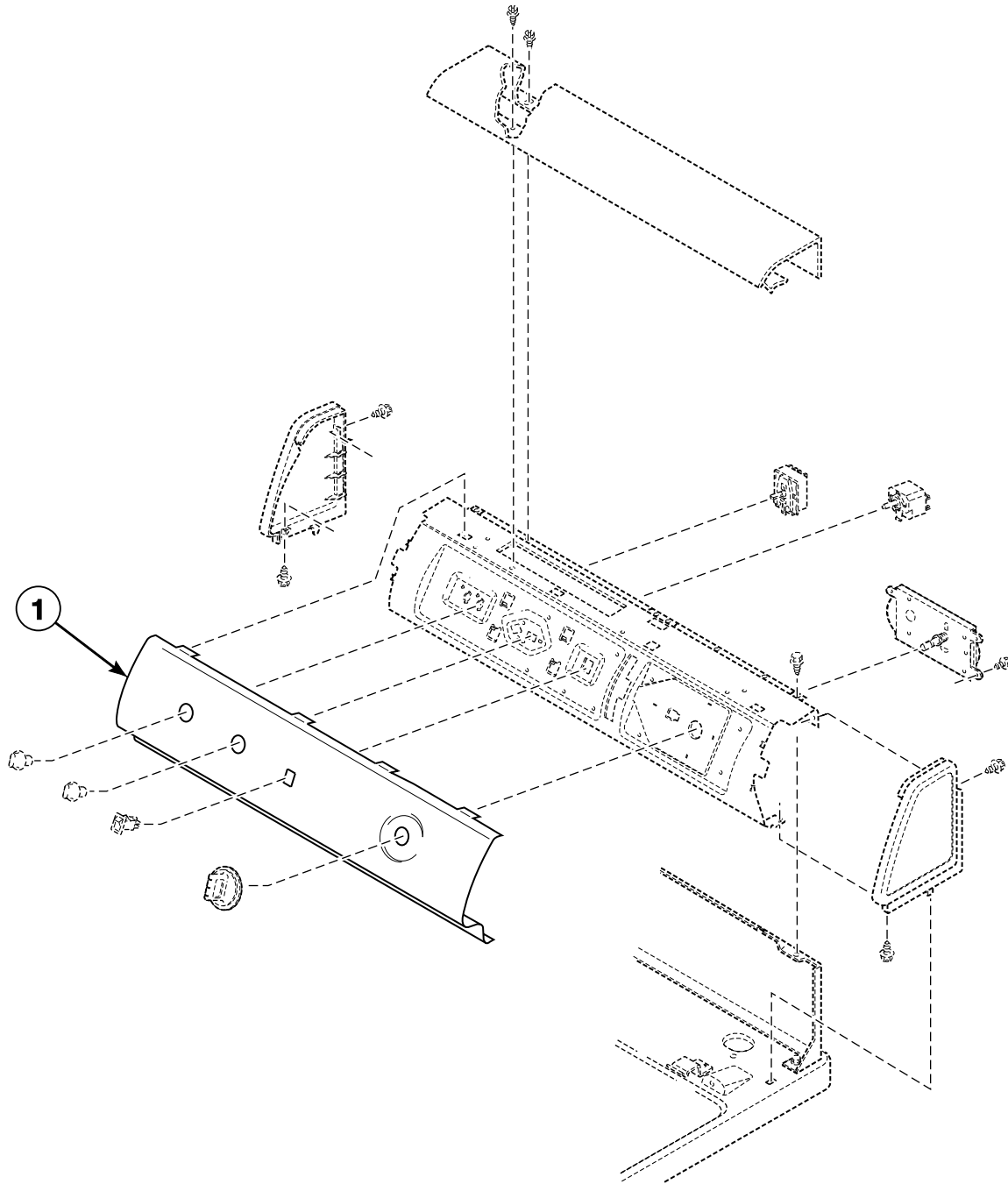
Information in this manual is applicable to these dryer models:

ADE3TFWS431AW01	LDE3TRWS331TW05	LEZ27A*F1702	LGS38A*M3013
ADE3TRWS431AW01	LDG3TRWS111TW05	LEZ27A*G3018	LGS38A*M3020
ADE3TRWS431NW22	LEB07A*F1709	LEZ27A*G4018	LGS40A*M3020
ADE32FSS431AN01	LED17A*F1700	LEZ37A*F1702	LGT57A*F1100
ADE32FSS431NN22	LEG37A*F4350	LEZ37A*F3000	LGT68A*F1100
ADE32FSS541RN01	LEH37A*F3300	LEZ37A*G3018	LGY47A*F1109
ADE41FSS171TN03	LEK37A*F4350	LEZ37A*G4018	LGZ27A*F1102
ADG3TFWS301AW01	LEN27A*G3008	LEZ37A*G5618	LGZ27A*M3013
ADG3TRWS301AW01	LEN27A*G3018	LEZ57A*F1702	LGZ37A*F1102
ADG32FSS301AN01	LEN27A*G4008	LEZ67A*F1702	LGZ37A*F3000
ADG41FSS111TN03	LEN27A*G4018	LGG37A*F3058	LGZ37A*G3013
AEZ17A*F1702	LEN27A*G99M3	LGH37A*F1182	LGZ37A*M3013
AEZ28A*F1702	LEN37A*G3018	LGH37A*F5423	LGZ57A*F1102
AEZ68A*F1702	LEN37A*G4018	LGK37A*F3058	LGZ67A*F1102
AGZ17A*F1102	LES17A*F3000	LGK37A*F3060	MDE3TRWS331TW06
AGZ28A*F1102	LES17A*F3007	LGN27A*M3008	MDG3TRWS111TW06
AGZ68A*F1102	LES17A*F3022	LGN27A*M3013	ZDE30RGS171CW01
BDE30FGS171CW01	LES17A*F4500	LGN37A*M3013	ZDE3LRGS171CW01
BDG30FGS111CW01	LES17A*M4588	LGS17A*F3020	ZDE41FSS171CN01
CDE3LRGS171CW01	LES27A*G3018	LGS17A*F3081	ZDE4BFGS171CW01
CDE4BFGS171CW01	LES27A*G4000	LGS17A*K1180	ZDE4BRGS171CW01
CDG3LRGS111CW01	LES27A*G4500	LGS17A*M3020	ZDG30RGS111CW01
CDG4BFGS111CW01	LES27A*G4518	LGS17A*M3082	ZDG3LRGS111CW01
CEZ68A*F1702	LES27A*G4018	LGS27A*M3013	ZDG41FSS111CN01
CGZ68A*F1102	LES28A*G4018	LGS27A*M3080	ZDG4BFGS111CW01
FDE3TRGS301NW10	LES33A*F4562	LGS37A*F3000	ZDG4BRGS111CW01
FDE3TRGS401NW22	LES37A*F3000	LGS37A*F3022	
FDG3TRGS301NW10	LES37A*F3028	LGS37A*F3028	
FEN16A*G4018	LES37A*F3300	LGS37A*F3058	
FEN17A*G3018	LES37A*F3327	LGS37A*F3060	
FEN17A*G4018	LES37A*F4350	LGS37A*F3080	
FES16A*G4018	LES37A*F5412	LGS37A*F5412	
FES17A*F3300	LES37A*G3018	LGS37A*F5423	
FES17A*F4350	LES37A*G4018	LGS37A*G3013	
FEU17A*F1702	LET57A*F1700	LGS37A*G3080	
FEZ17A*F1702	LET67A*F1700	LGS37A*M3013	
FGN16A*M3013	LET68A*F1700	LGS37A*M3080	
FGN17A*M3013	LEY47A*F1709		
FGS17A*F3060			
FGZ17A*F1102			

* Add Letter To Designate Color. G - Gray L - Almond Q - Bisque W - White

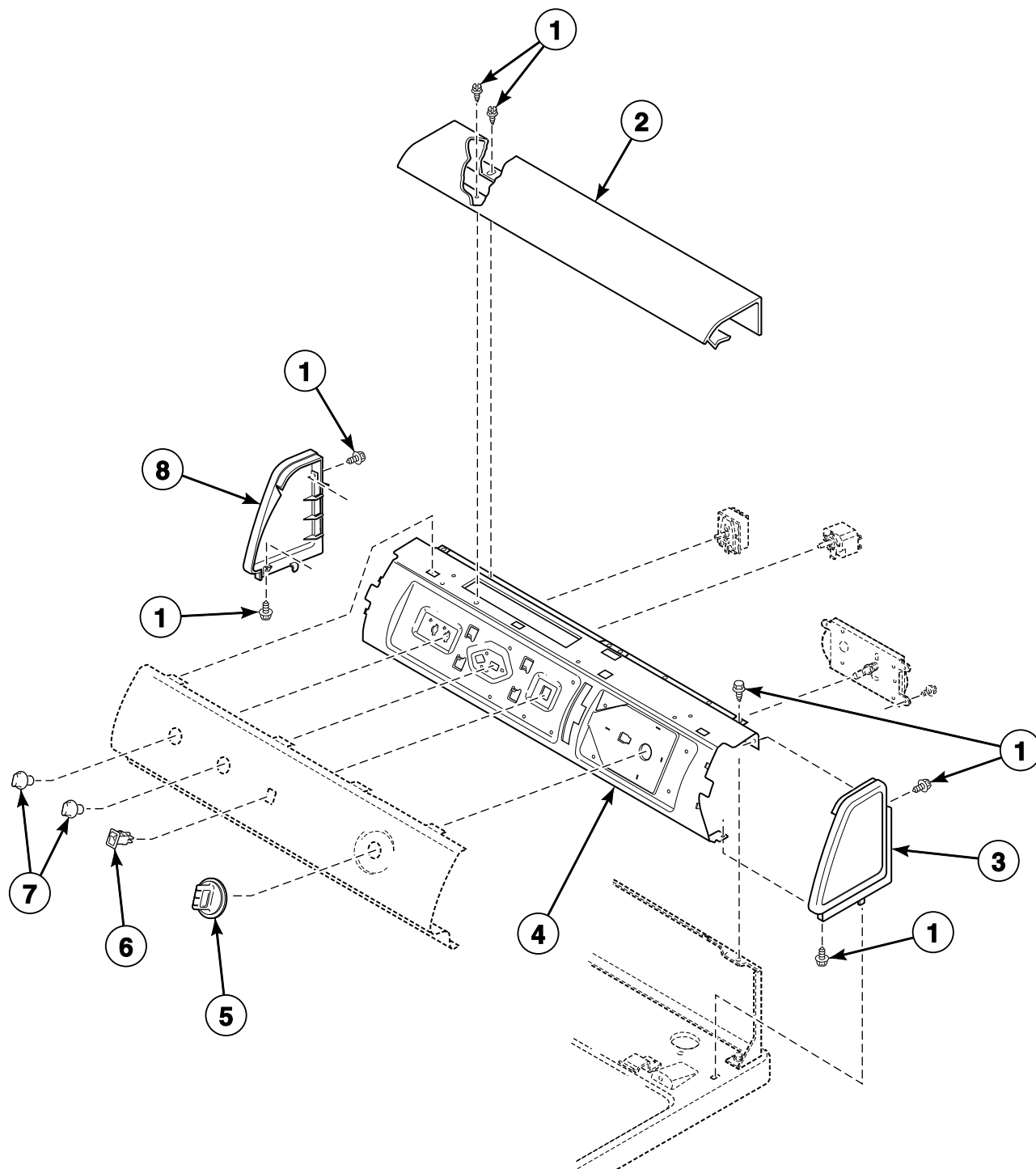
Graphic Panel - Rear Control Models

All Models Except ADE3TFWS431AW01, ADE32FSS431AN01, ADE32FSS431NN22, ADE32FSS541RN01, ADE41FSS171TN03, ADG3TFWS301AW01, ADG32FSS301AN01, ADG41FSS111TN03, BDE30FGS171CW01, BDG30FGS111CW01, CDE4BFGS171CW01, CDG4BFGS111CW01, CEZ68A*F1702, CGZ68A*F1102, FEN16A*G4018, FEN17A*G3018, FEN17A*G4018, FES16A*G4018, FES17A*F3300, FES17A*F4350, FEU17A*F1702, FEZ17A*F1702, FGN16A*M3013, FGN17A*M3013, FGS17A*F3060, FGZ17A*F1102, ZDE41FSS171CN01, ZDE4BFGS171CW01, ZDG41FSS111CN01 and ZDG4BFGS111CW01



Control Panel and Knobs - Rear Control Models

All Models Except ADE3TFWS431AW01, ADE32FSS431AN01, ADE32FSS431NN22, ADE32FSS541RN01, ADE41FSS171TN03, ADG3TFWS301AW01, ADG32FSS301AN01, ADG41FSS111TN03, BDE30FGS171CW01, BDG30FGS111CW01, CDE4BFGS171CW01, CDG4BFGS111CW01, CEZ68A*F1702, CGZ68A*F1102, FEN16A*G4018, FEN17A*G3018, FEN17A*G4018, FES16A*G4018, FES17A*F3300, FES17A*F4350, FEU17A*F1702, FEZ17A*F1702, FGN16A*M3013, FGN17A*M3013, FGS17A*F3060, FGZ17A*F1102, ZDE41FSS171CN01, ZDE4BFGS171CW01, ZDG41FSS111CN01 and ZDG4BFGS111CW01

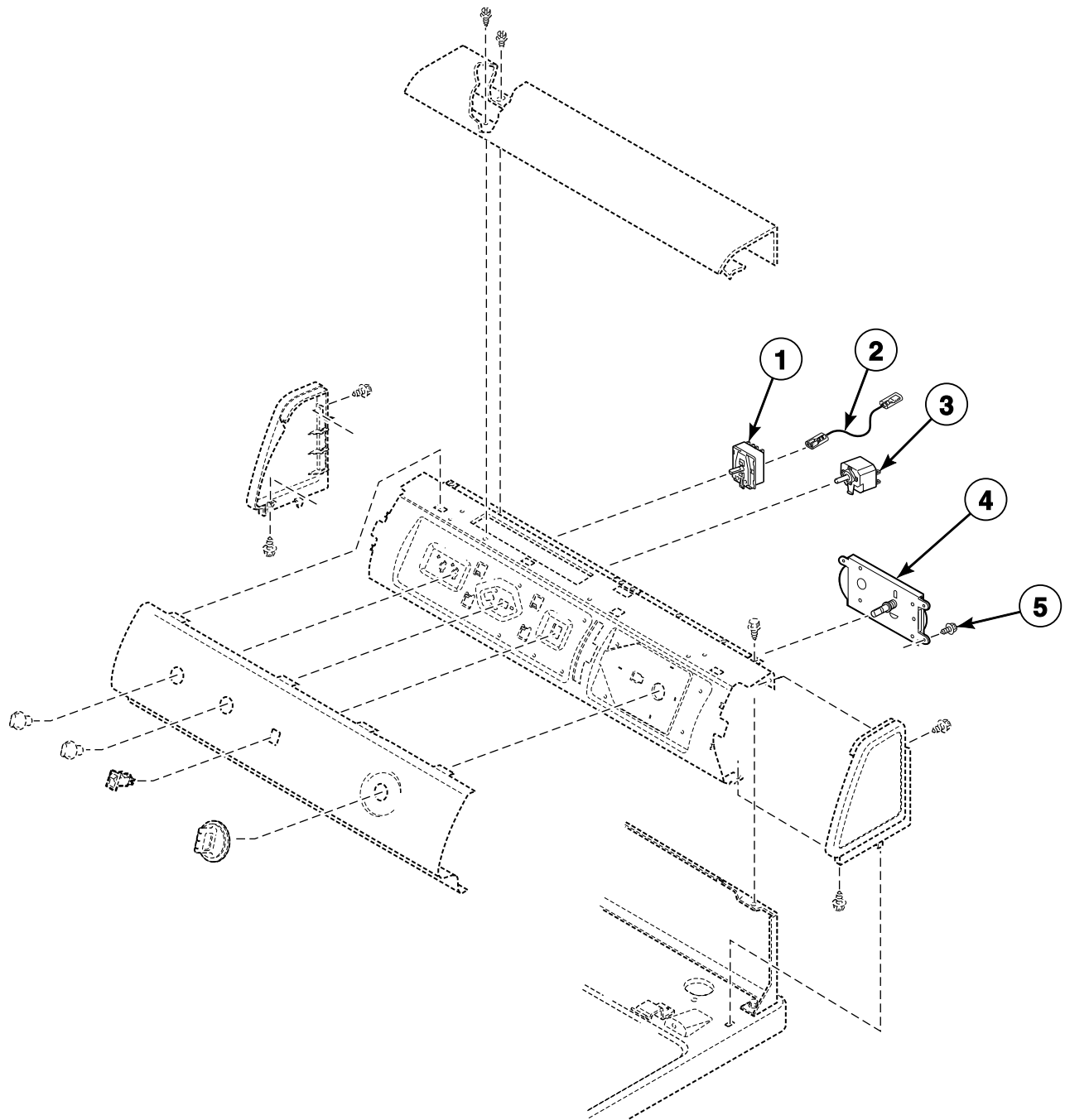


DRY1858P_506054

LGS2 P2

Controls - Rear Control Models

All Models Except ADE3TFWS431AW01, ADE32FSS431AN01, ADE32FSS431NN22, ADE32FSS541RN01, ADE41FSS171TN03, ADG3TFWS301AW01, ADG32FSS301AN01, ADG41FSS111TN03, BDE30FGS171CW01, BDG30FGS111CW01, CDE4BFGS171CW01, CDG4BFGS111CW01, CEZ68A*F1702, CGZ68A*F1102, FEN16A*G4018, FEN17A*G3018, FEN17A*G4018, FES16A*G4018, FES17A*F3300, FES17A*F4350, FEU17A*F1702, FEZ17A*F1702, FGN16A*M3013, FGN17A*M3013, FGS17A*F3060, FGZ17A*F1102, ZDE41FSS171CN01, ZDE4BFGS171CW01, ZDG41FSS111CN01 and ZDG4BFGS111CW01

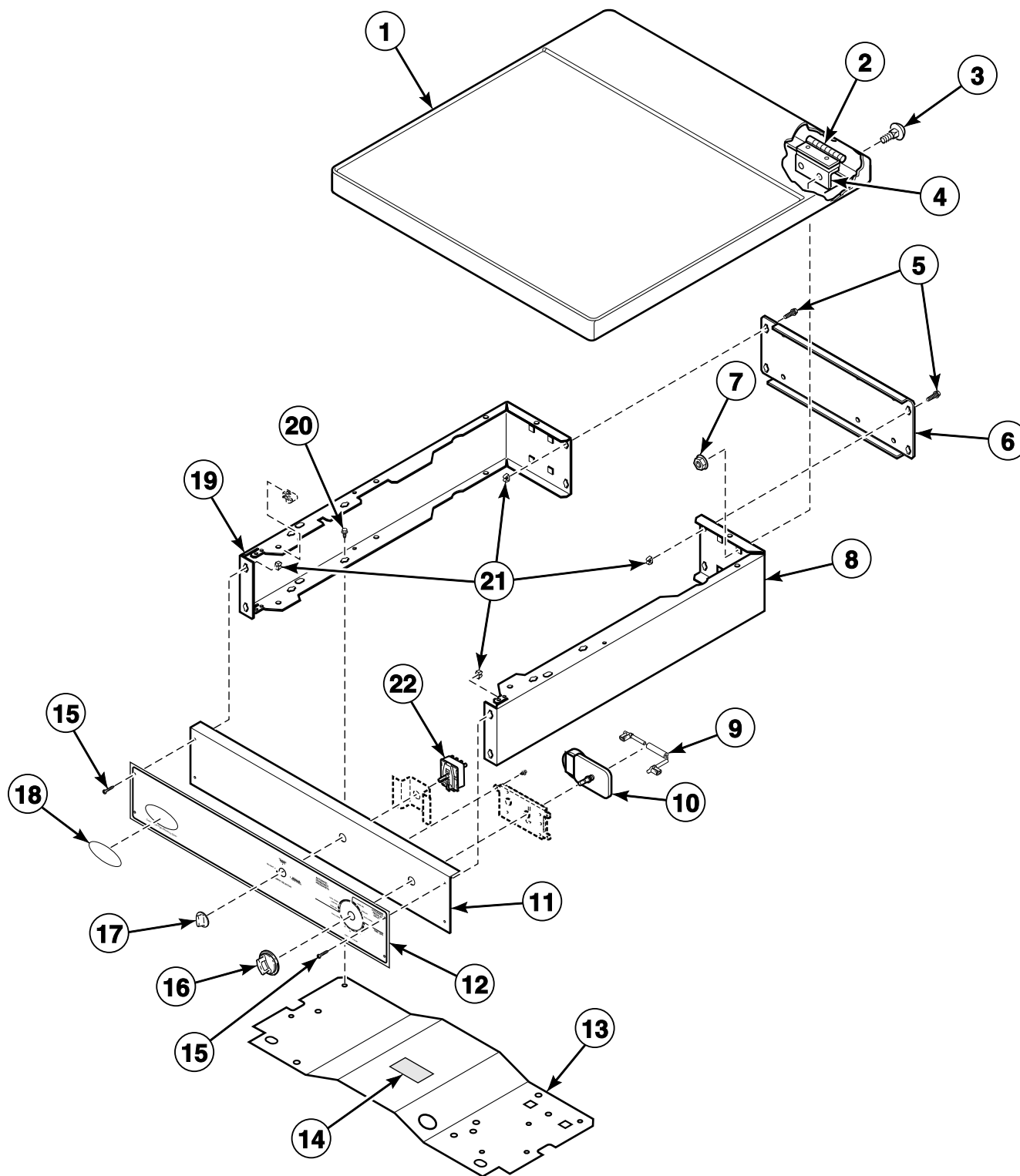


LGS2 P3

DRY2280P_506054

Control Cabinet - Front Control Models

Models BDE30FGS171CW01, BDG30FGS111CW01, FEN16A*G4018, FEN17A*G3018, FEN17A*G4018, FES16A*G4018, FES17A*F3300, FES17A*F4350, FEU17A*F1702, FEZ17A*F1702, FGN16A*M3013, FGN17A*M3013, FGS17A*F3060 and FGZ17A*F1102

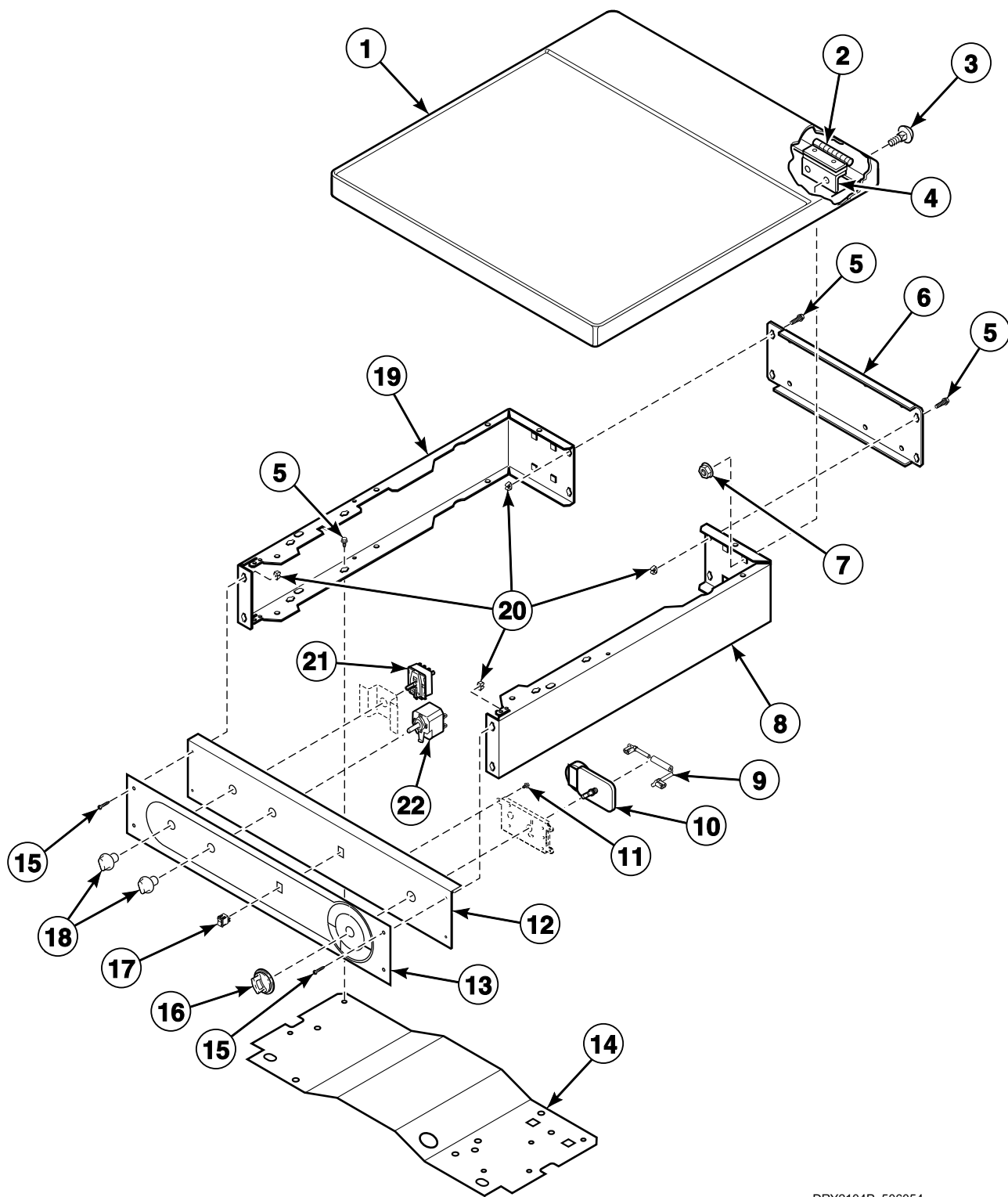


DRY2103P_506054

LGS2 P4

Control Panel and Controls - Front Control

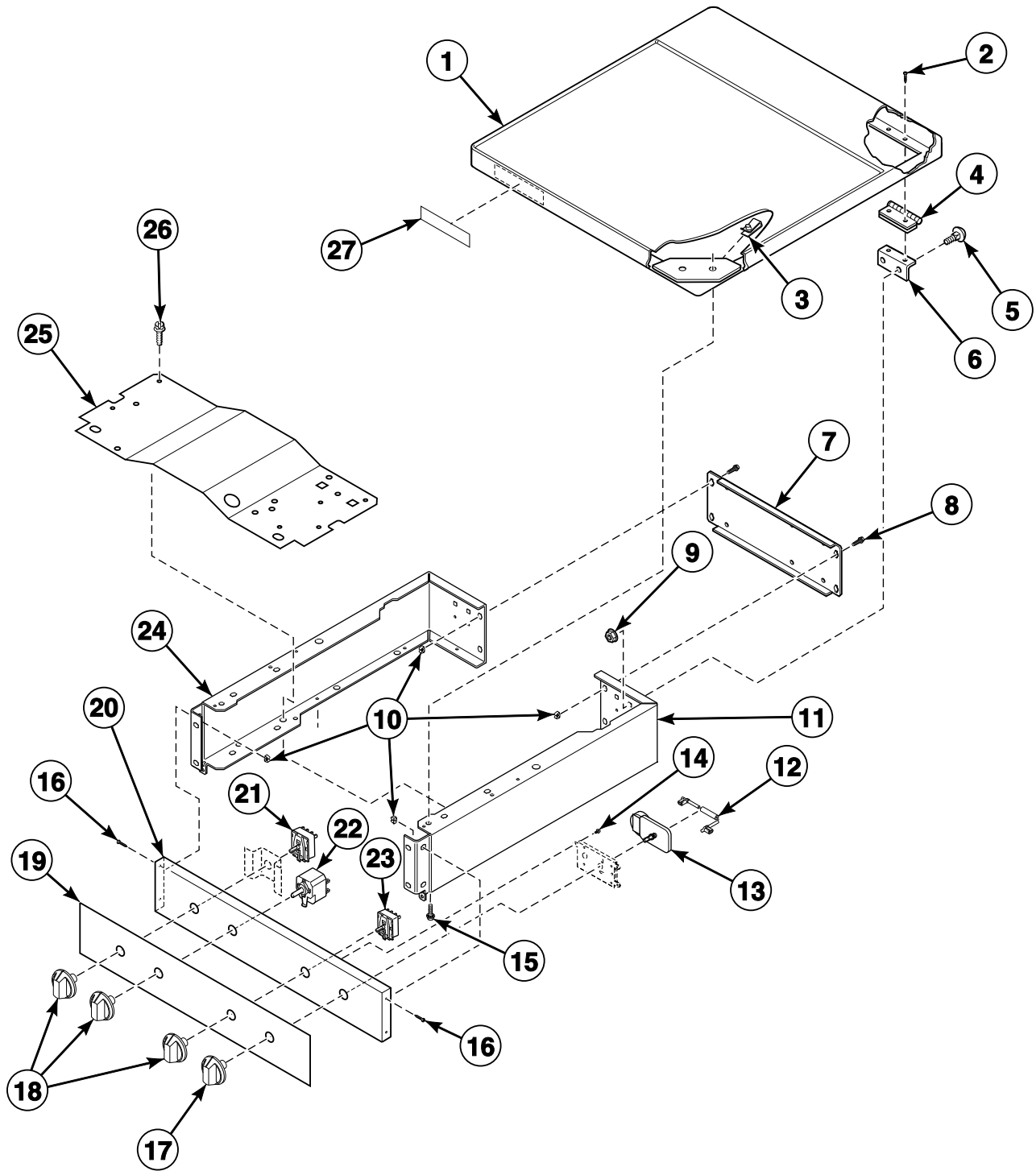
Models ADE3TFWS431AW01, ADG3TFWS301AW01, CDE4BFGS171CW01, CDG4BFGS111CW01, CEZ68A*F1702, CGZ68A*F1102, ZDE4BFGS171CW01 and ZDG4BFGS111CW01



DRY2104P_506054

Control Cabinet and Controls

Models ADE32FSS431AN01, ADE32FSS431NN22, ADE32FSS541RN01, ADE41FSS171TN03,
ADG32FSS301AN01, ADG41FSS111TN03, ZDE41FSS171CN01 and ZDG41FSS111CN01

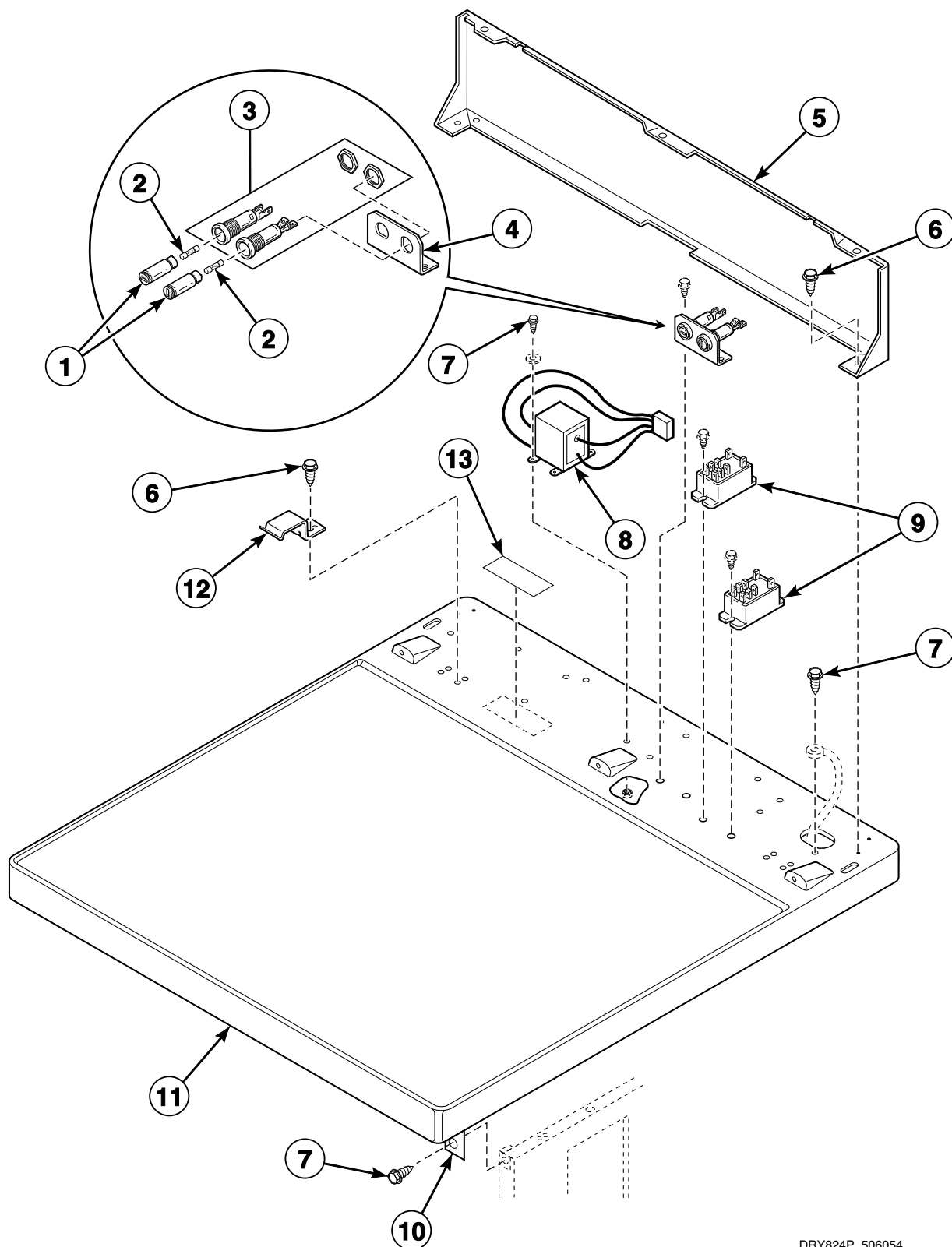


DRY2240P_506054

LGS2 P6

Cabinet Top and Control Hood Rear Panel - Rear Control Models

All Models Except ADE3TFWS431AW01, ADE32FSS431AN01, ADE32FSS431NN22, ADE32FSS541RN01, ADE41FSS171TN03, ADG3TFWS301AW01, ADG32FSS301AN01, ADG41FSS111TN03, BDE30FGS171CW01, BDG30FGS111CW01, CDE4BFGS171CW01, CDG4BFGS111CW01, CEZ68A*F1702, CGZ68A*F1102, FEN16A*G4018, FEN17A*G3018, FEN17A*G4018, FES16A*G4018, FES17A*F3300, FES17A*F4350, FEU17A*F1702, FEZ17A*F1702, FGN16A*M3013, FGN17A*M3013, FGS17A*F3060, FGZ17A*F1102, ZDE41FSS171CN01, ZDE4BFGS171CW01, ZDE41FSS171CN01, ZDE4BFGS171CW01

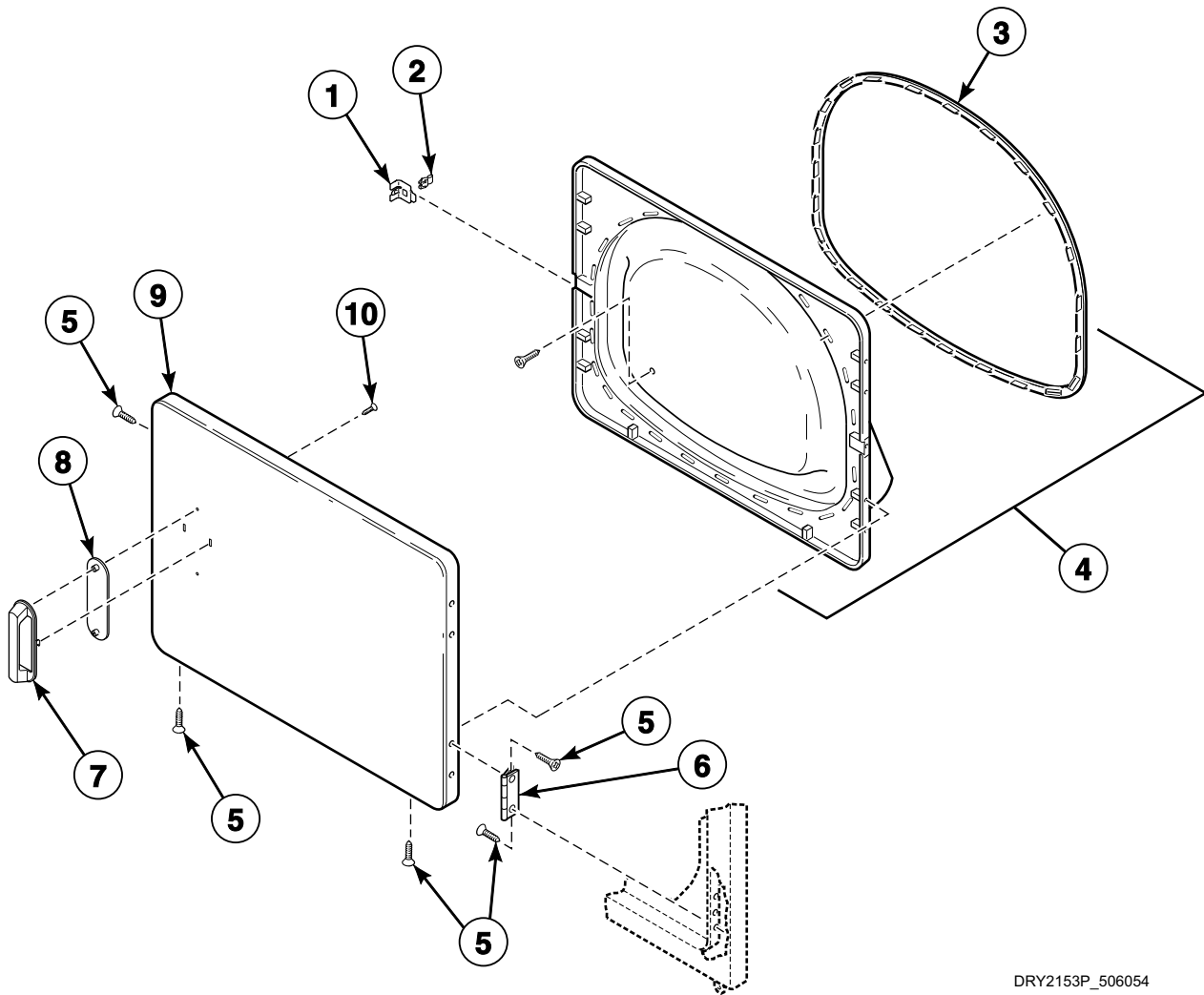


LGS2 P7

DRY824P_506054

Loading Door (Drawing 1 of 2)

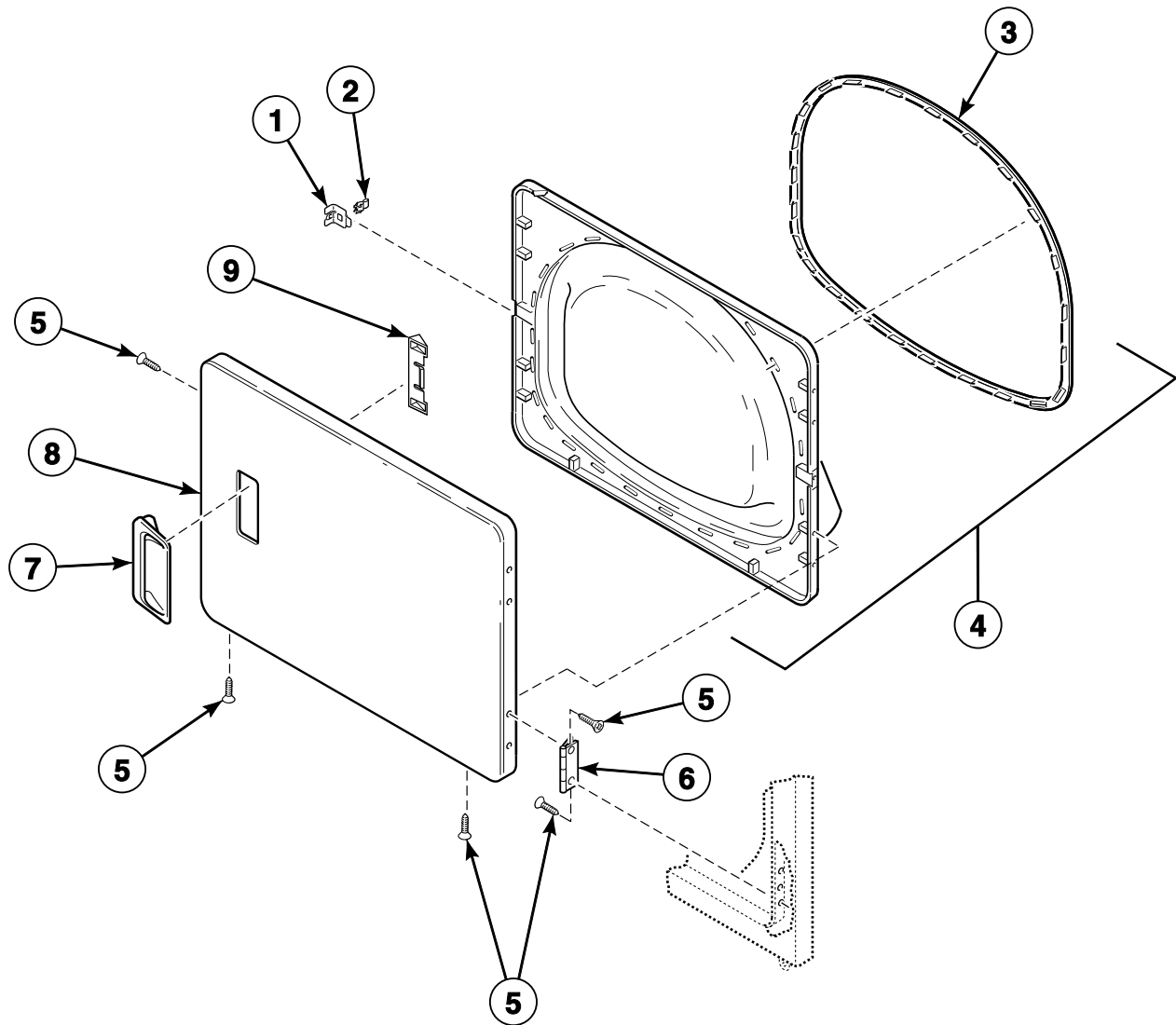
Models ADE32FSS431AN01, ADE32FSS431NN22, ADE32FSS541RN01, ADE41FSS171TN03,
ADG32FSS301AN01, ADG41FSS111TN03, ZDE41FSS171CN01 and ZDG41FSS111CN01



DRY2153P_506054

Loading Door (Drawing 2 of 2)

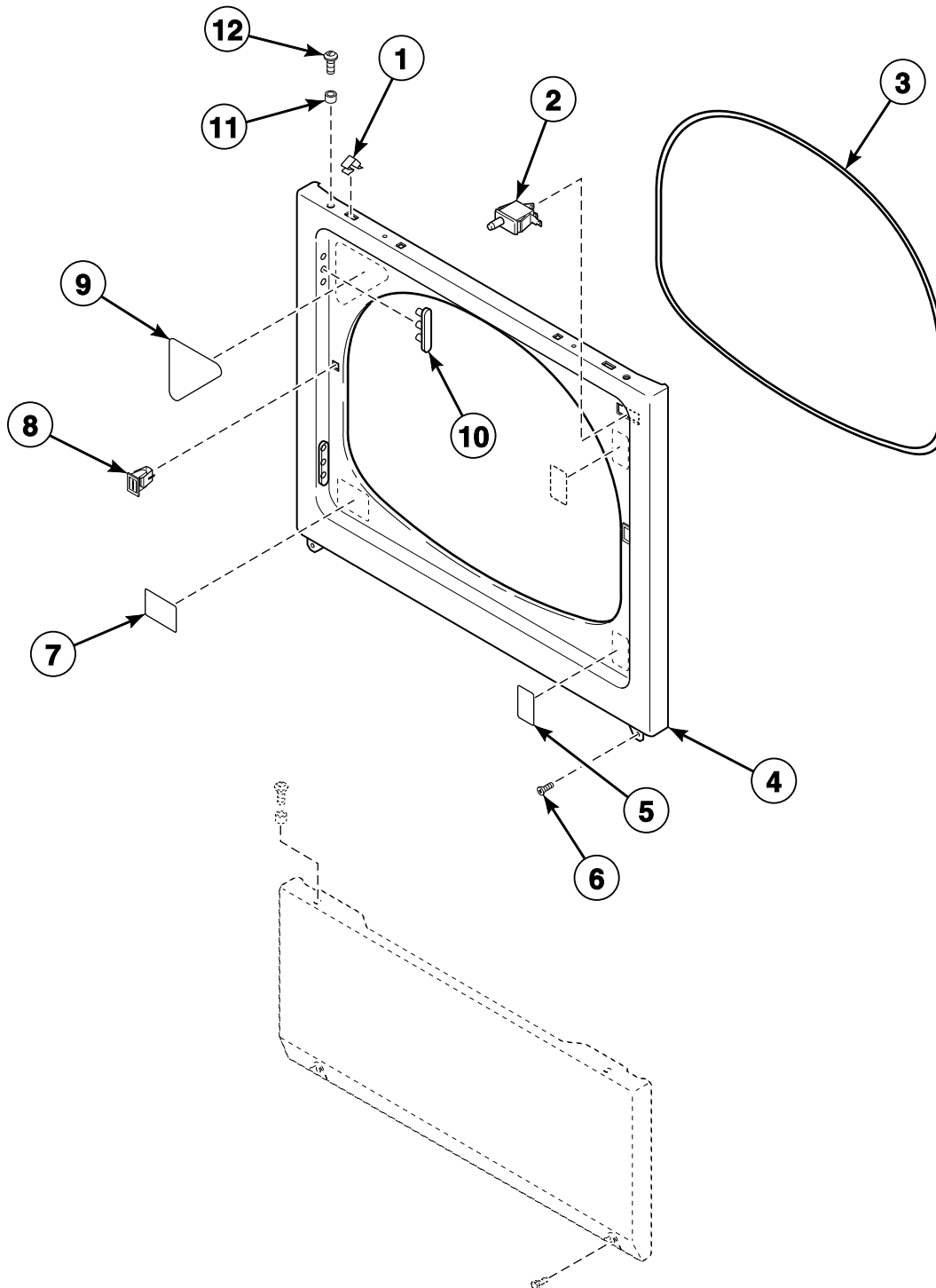
All Models Except ADE32FSS431AN01, ADE32FSS431NN22, ADE32FSS541RN01, ADE41FSS171TN03, ADG32FSS301AN01, ADG41FSS111TN03, ZDE41FSS171CN01 and ZDG41FSS111CN01



DRY1874P_506054

LGS2 P9

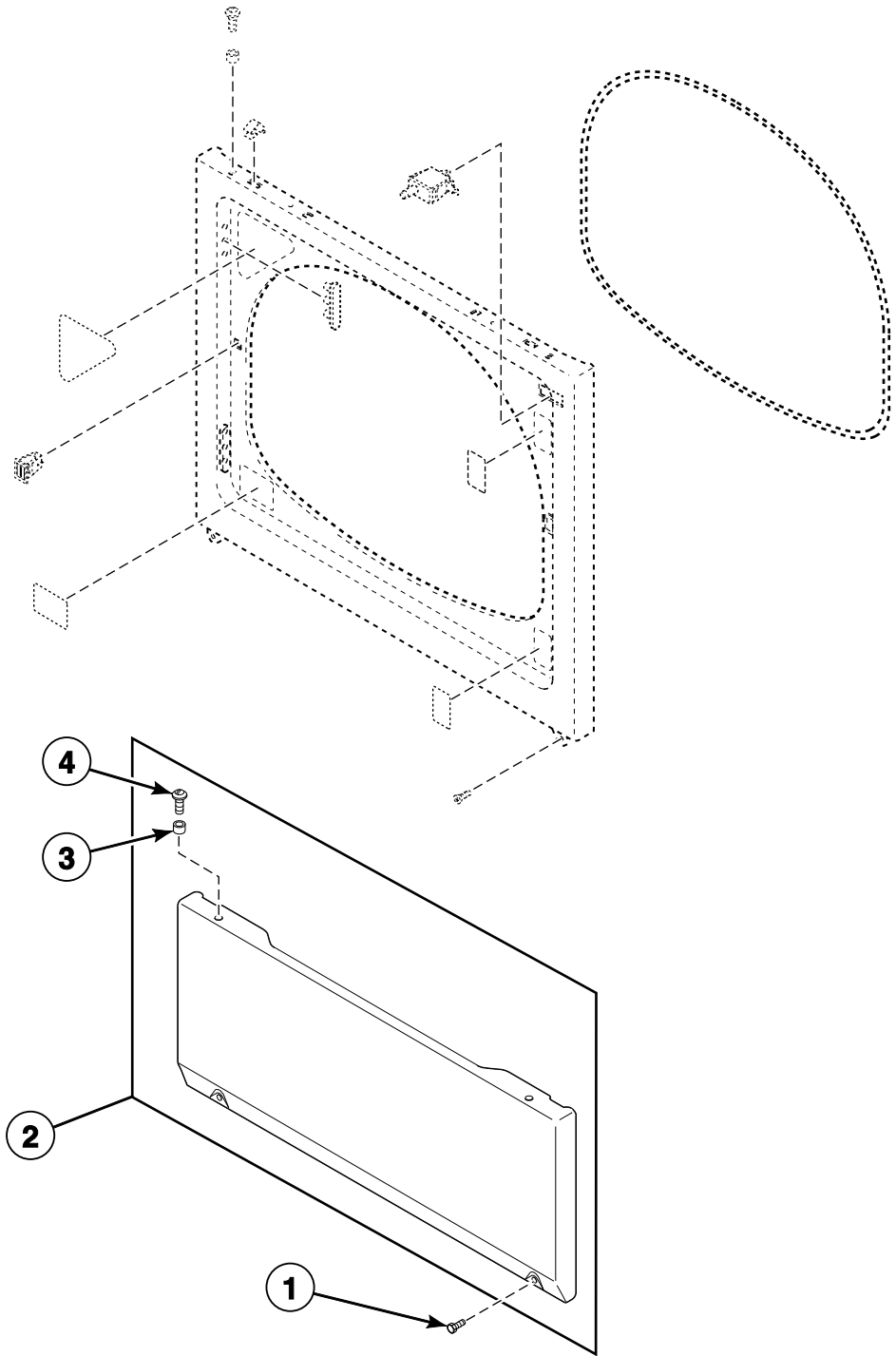
Front Panel and Seal



DRY2305P_506054

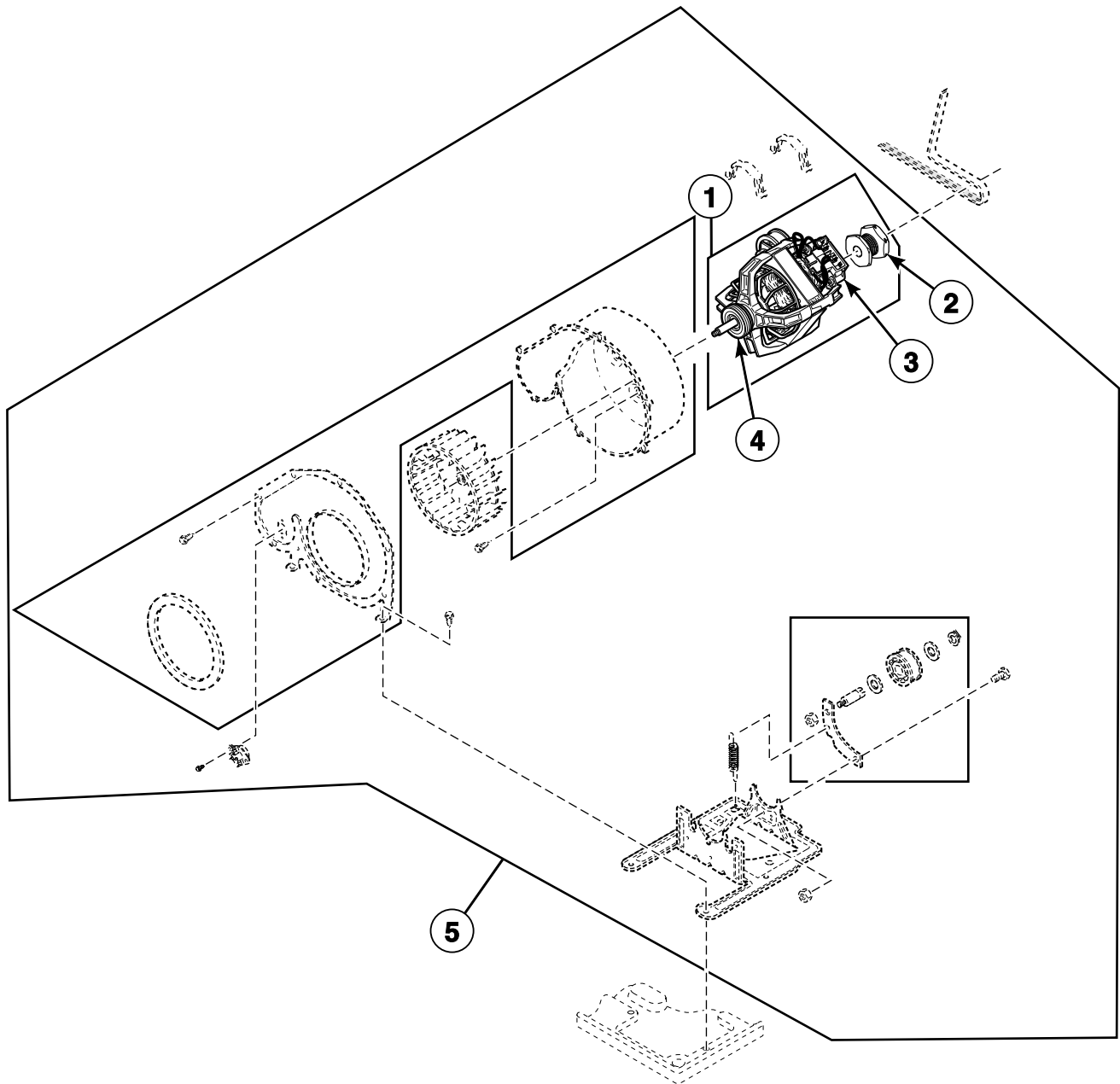
LGS2 P10

Access Panel



DRY2305PA_506054

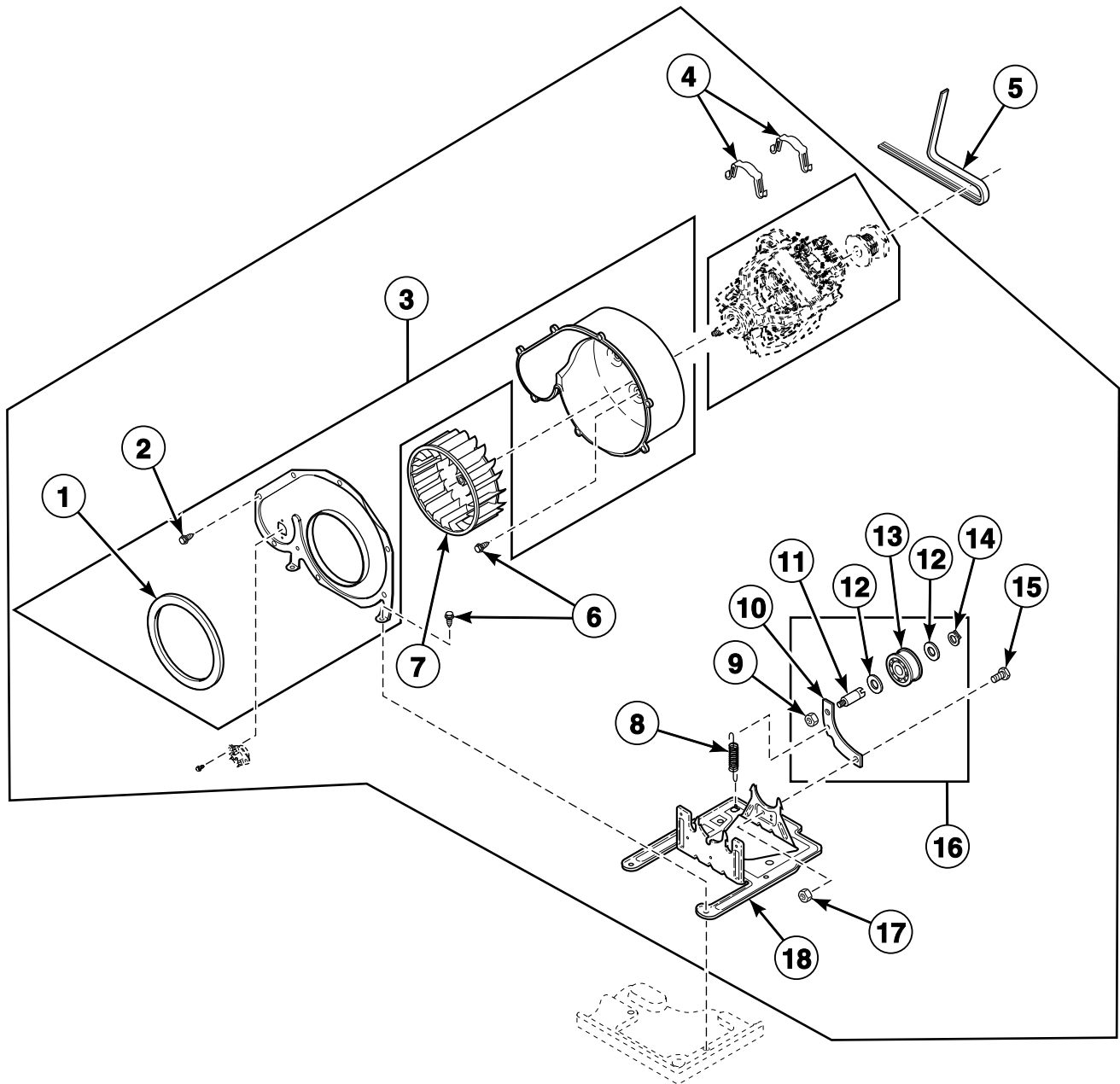
Motor, Exhaust Fan and Belt (Drawing 1 of 2)



DRY2105P_506054

LGS2 P12

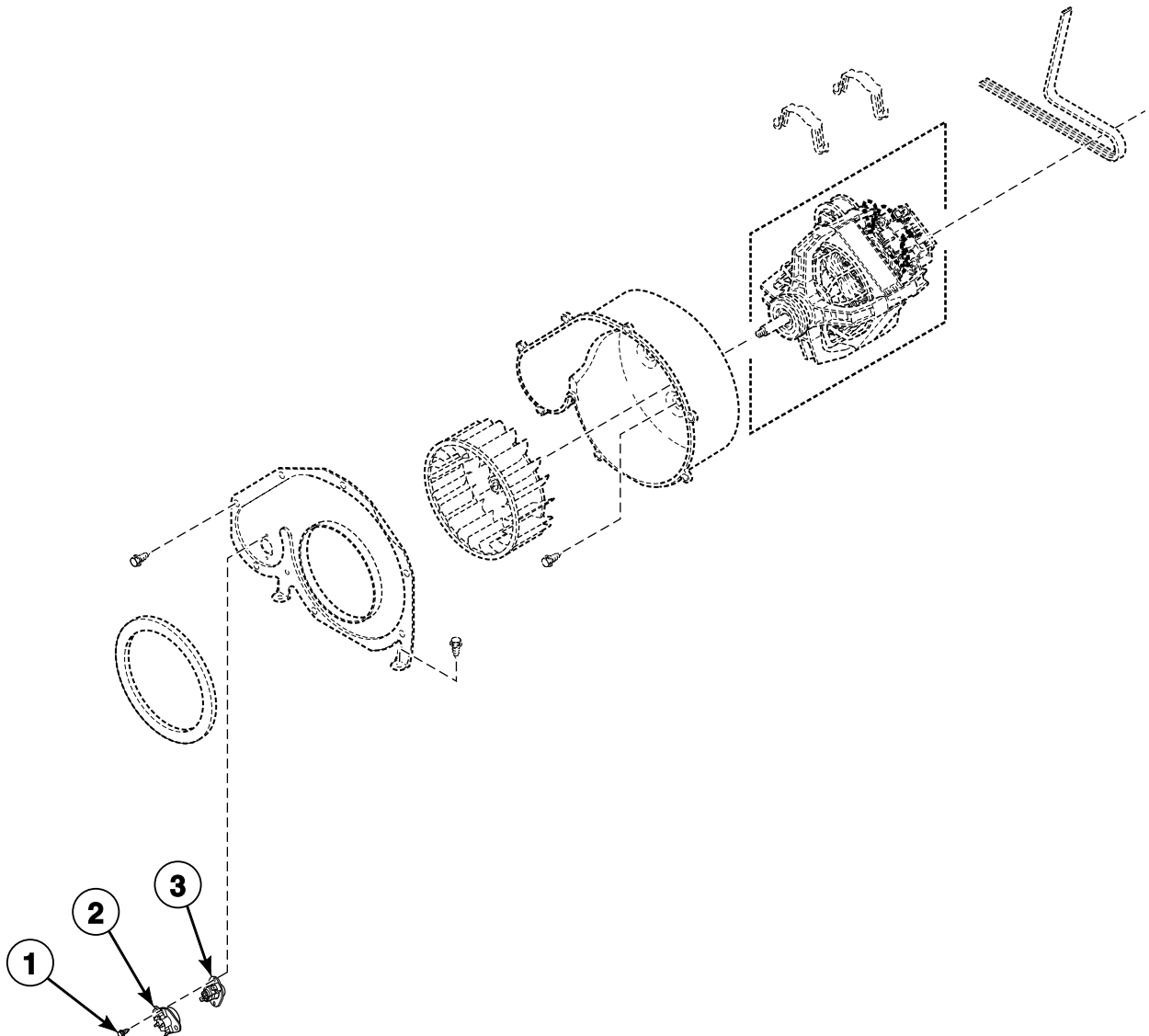
Motor, Exhaust Fan and Belt (Drawing 2 of 2)



DRY2105PA_506054

LGS2 P13

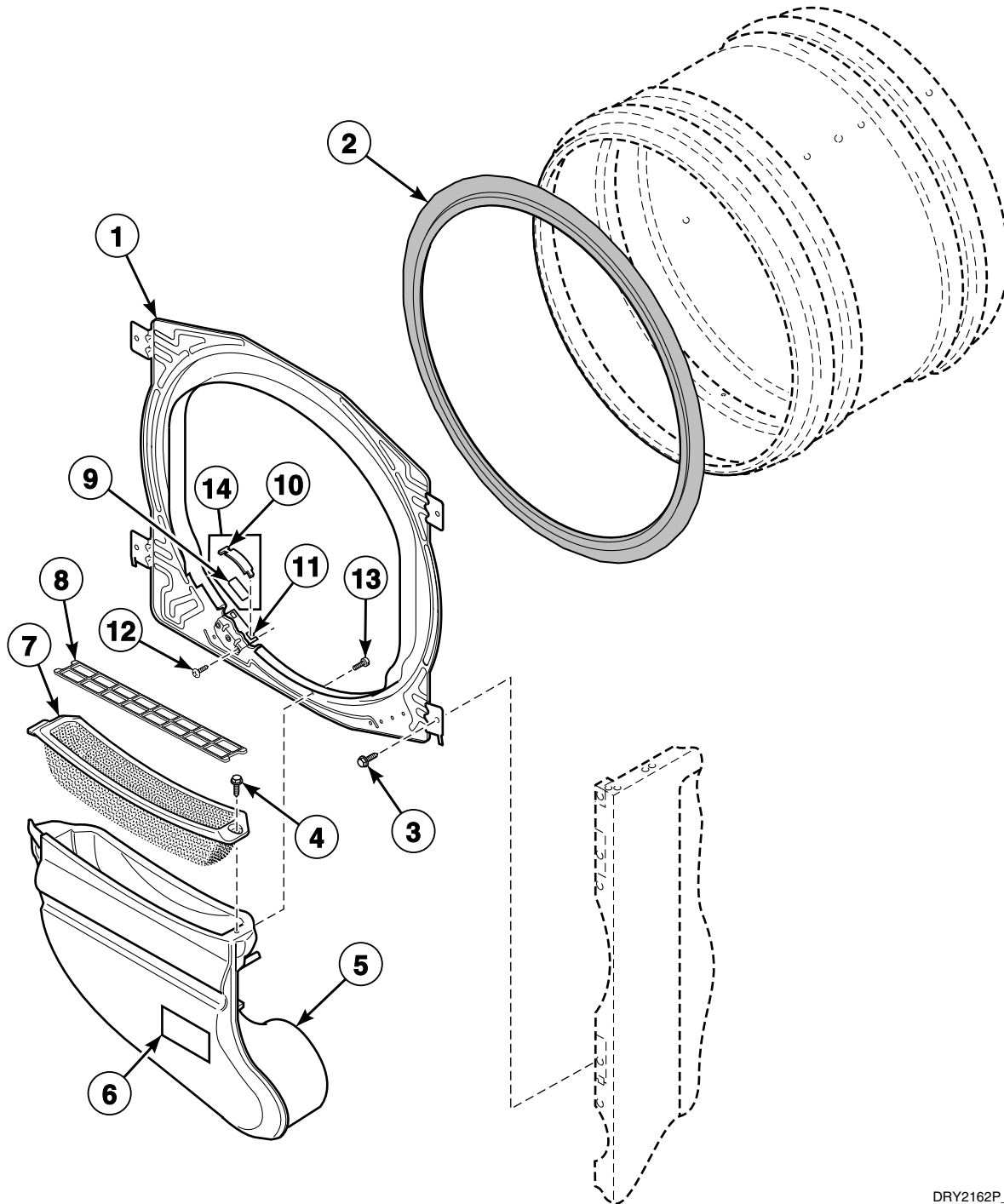
Thermostat



DRY1850P_506054

Front Bulkhead, Seal and Air Duct - Without Light

All Models Except ADE32FSS431AN01, ADE32FSS431NN22, ADE32FSS541RN01, ADE41FSS171TN03, ADG32FSS301AN01, ADG41FSS111TN03, AEZ28A*F1702, AEZ68A*F1702, AGZ28A*F1102, AGZ68A*F1102, CDE3LRGS171CW01, CDE4BFGS171CW01, CDG3LRGS111CW01, CDG4BFGS111CW01, CEZ68A*F1702, CGZ68A*F1102, LES28A*G4018, LET57A*F1700, LET67A*F1700, LET68A*F1700, LEY47A*F1709, LEZ57A*F1702, LEZ67A*F1702, LGS38A*M3013, LGS38A*M3020, LGS40A*M3020, LGT57A*F1100, LGT68A*F1100, LGY47A*F1109, LGZ57A*F1102, LGZ67A*F1102, ZDE3LRGS171CW01, ZDE41FSS171CN01, ZDE4BFGS171CW01, ZDE4BRGS171CW01, ZDG3LRGS111CW01, ZDG41FSS111CN01, ZDG4BFGS111CW01 and ZDG4BRGS111CW01

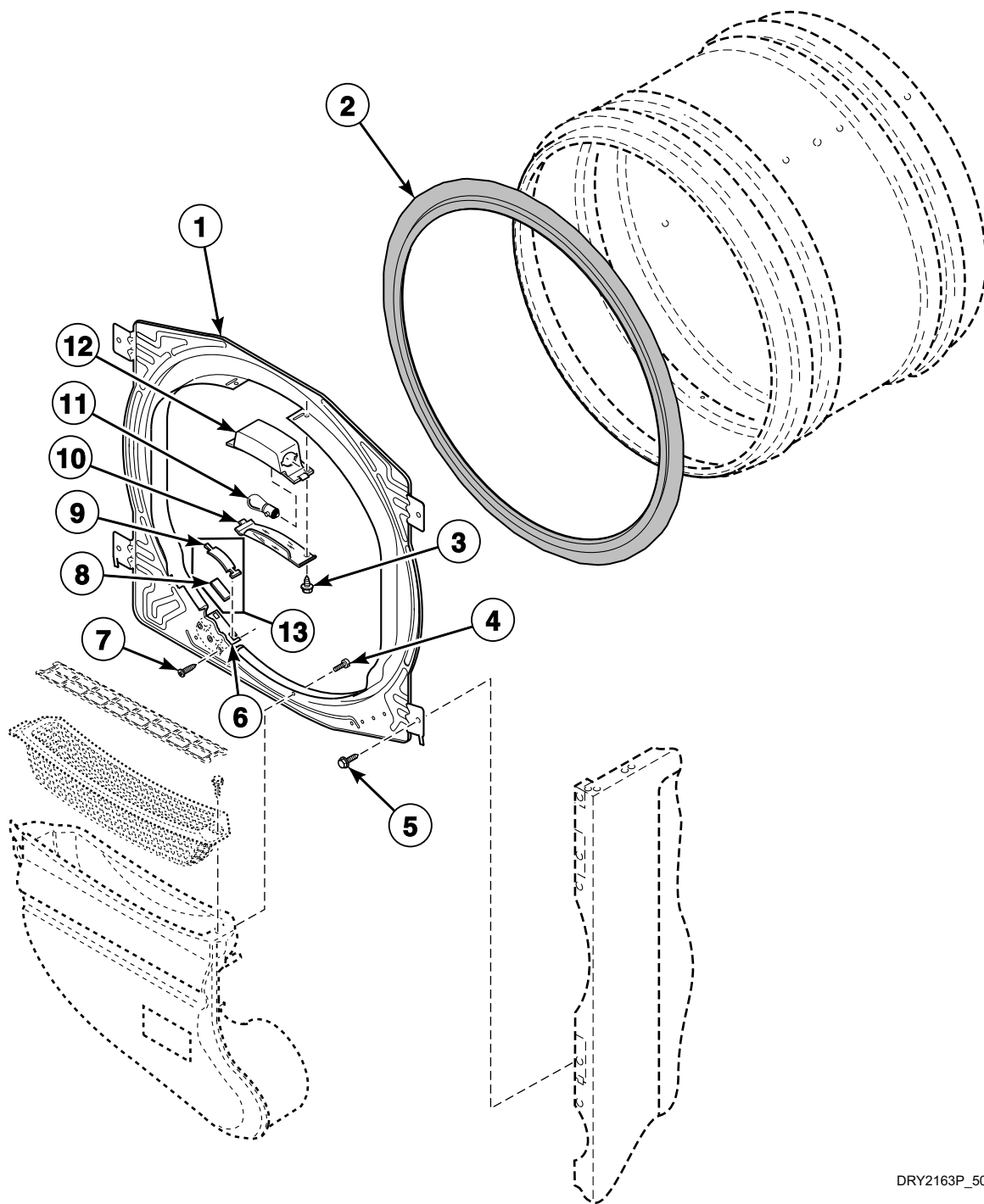


DRY2162P_506054

LGS2 P15

Front Bulkhead and Seal - With Light

Models ADE32FSS431AN01, ADE32FSS431NN22, ADE32FSS541RN01, ADE41FSS171TN03, ADG32FSS301AN01, ADG41FSS111TN03, AEZ28A*F1702, AEZ68A*F1702, AGZ28A*F1102, AGZ68A*F1102, CDE3LRGS171CW01, CDE4BFGS171CW01, CDG3LRGS111CW01, CDG4BFGS111CW01, CEZ68A*F1702, CGZ68A*F1102, LES28A*G4018, LET57A*F1700, LET67A*F1700, LET68A*F1700, LEY47A*F1709, LEZ57A*F1702, LEZ67A*F1702, LGS38A*M3013, LGS38A*M3020, LGS40A*M3020, LGT57A*F1100, LGT68A*F1100, LGY47A*F1109, LGZ57A*F1102, LGZ67A*F1102, ZDE3LRGS171CW01, ZDE41FSS171CN01, ZDE4BFGS171CW01, ZDE4BRGS171CW01, ZDG3LRGS111CW01, ZDG41FSS111CN01, ZDG4BFGS111CW01 and ZDG4BRGS111CW01

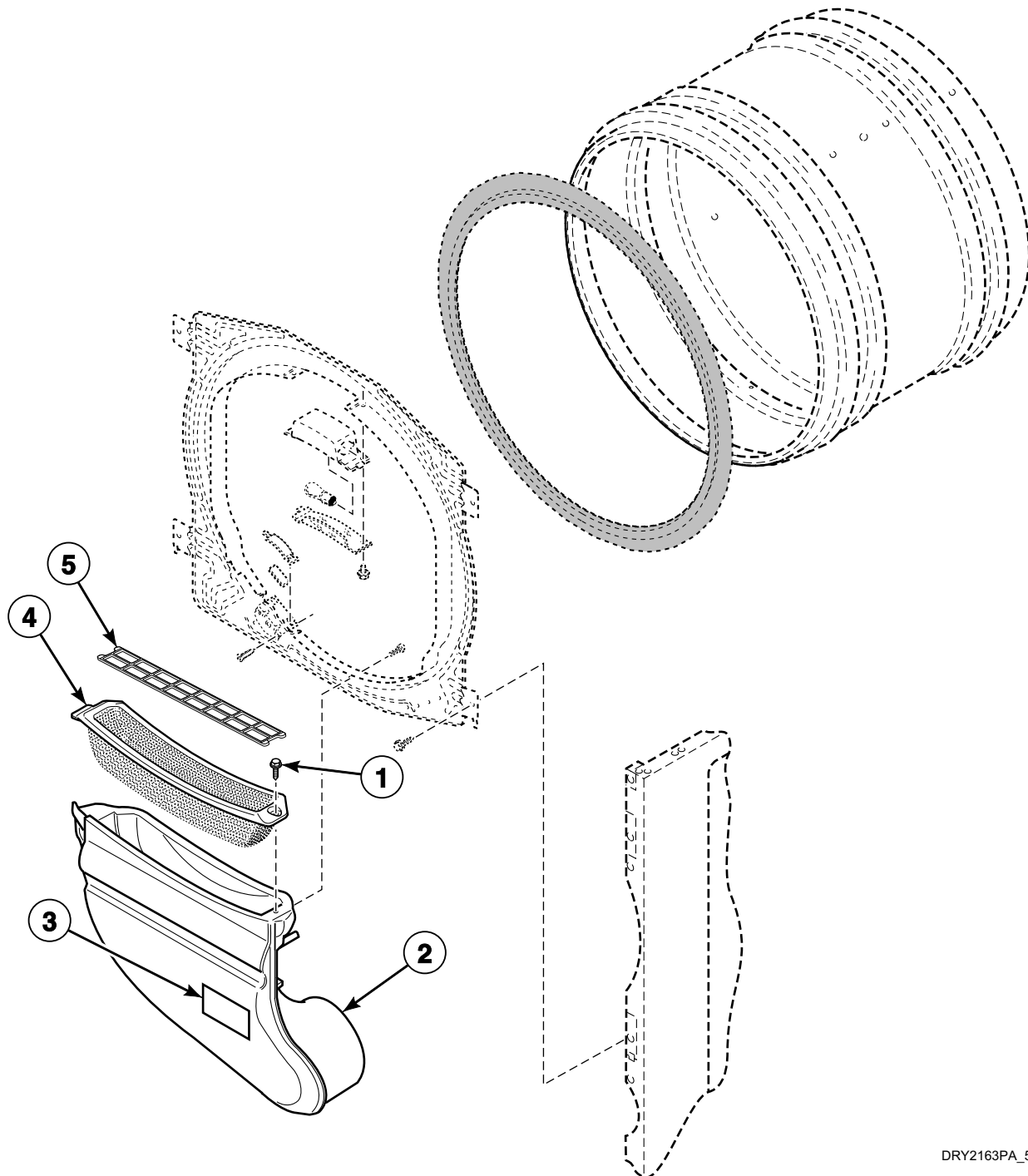


DRY2163P_506054

LGS2 P16

Air Duct

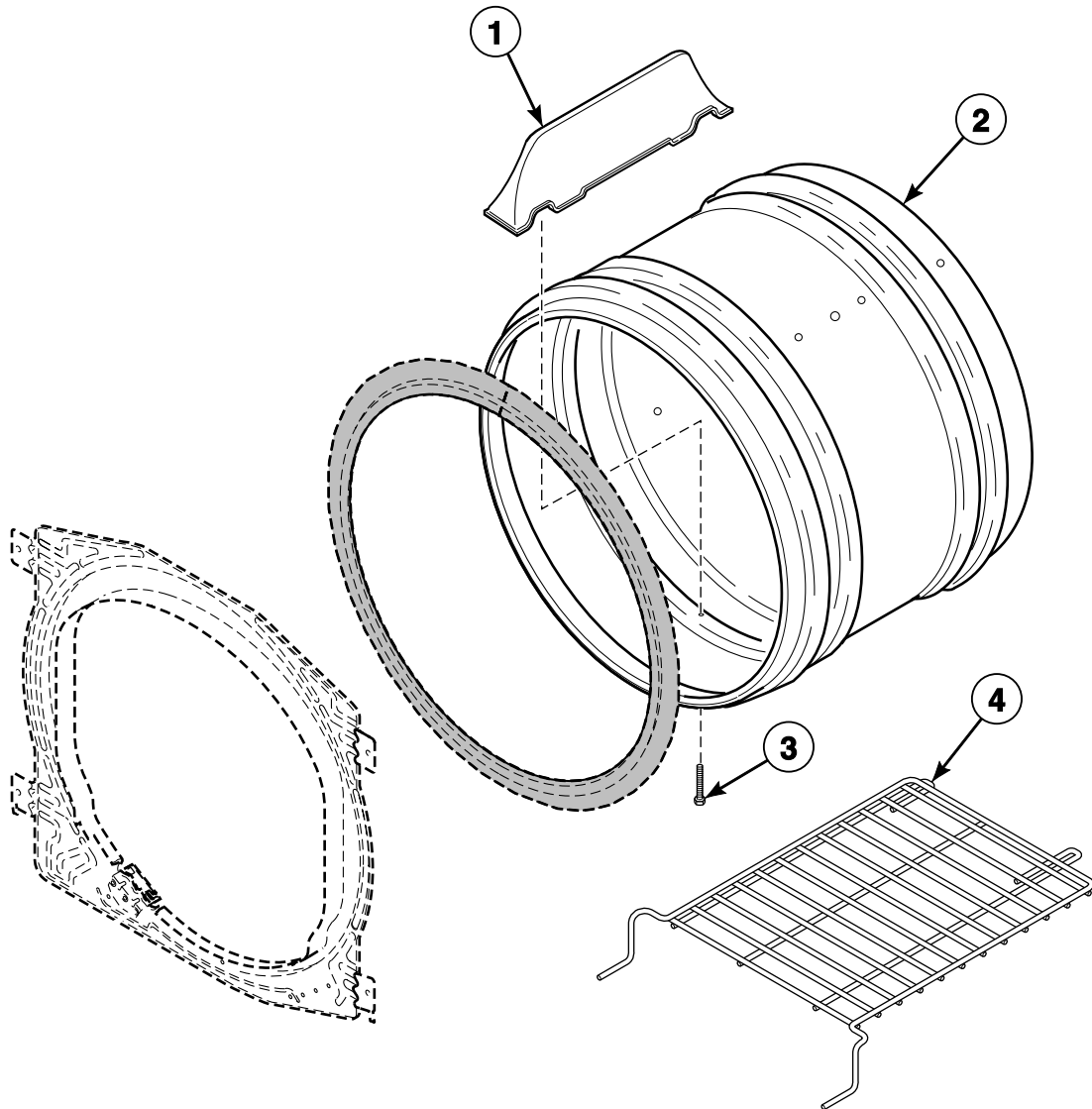
Models ADE32FSS431AN01, ADE32FSS431NN22, ADE32FSS541RN01, ADE41FSS171TN03, ADG32FSS301AN01, ADG41FSS111TN03, AEZ28A*F1702, AEZ68A*F1702, AGZ28A*F1102, AGZ68A*F1102, CDE3LRGS171CW01, CDE4BFGS171CW01, CDG3LRGS111CW01, CDG4BFGS111CW01, CEZ68A*F1702, CGZ68A*F1102, LES28A*G4018, LET57A*F1700, LET67A*F1700, LET68A*F1700, LEY47A*F1709, LEZ57A*F1702, LEZ67A*F1702, LGS38A*M3013, LGS38A*M3020, LGS40A*M3020, LGT57A*F1100, LGT68A*F1100, LGY47A*F1109, LGZ57A*F1102, LGZ67A*F1102, ZDE3LRGS171CW01, ZDE41FSS171CN01, ZDE4BFGS171CW01, ZDE4BRGS171CW01, ZDG3LRGS111CW01, ZDG41FSS111CN01, ZDG4BFGS111CW01 and ZDG4BRGS111CW01



DRY2163PA_506054

LGS2 P17

Cylinder, Baffles and Drying Rack

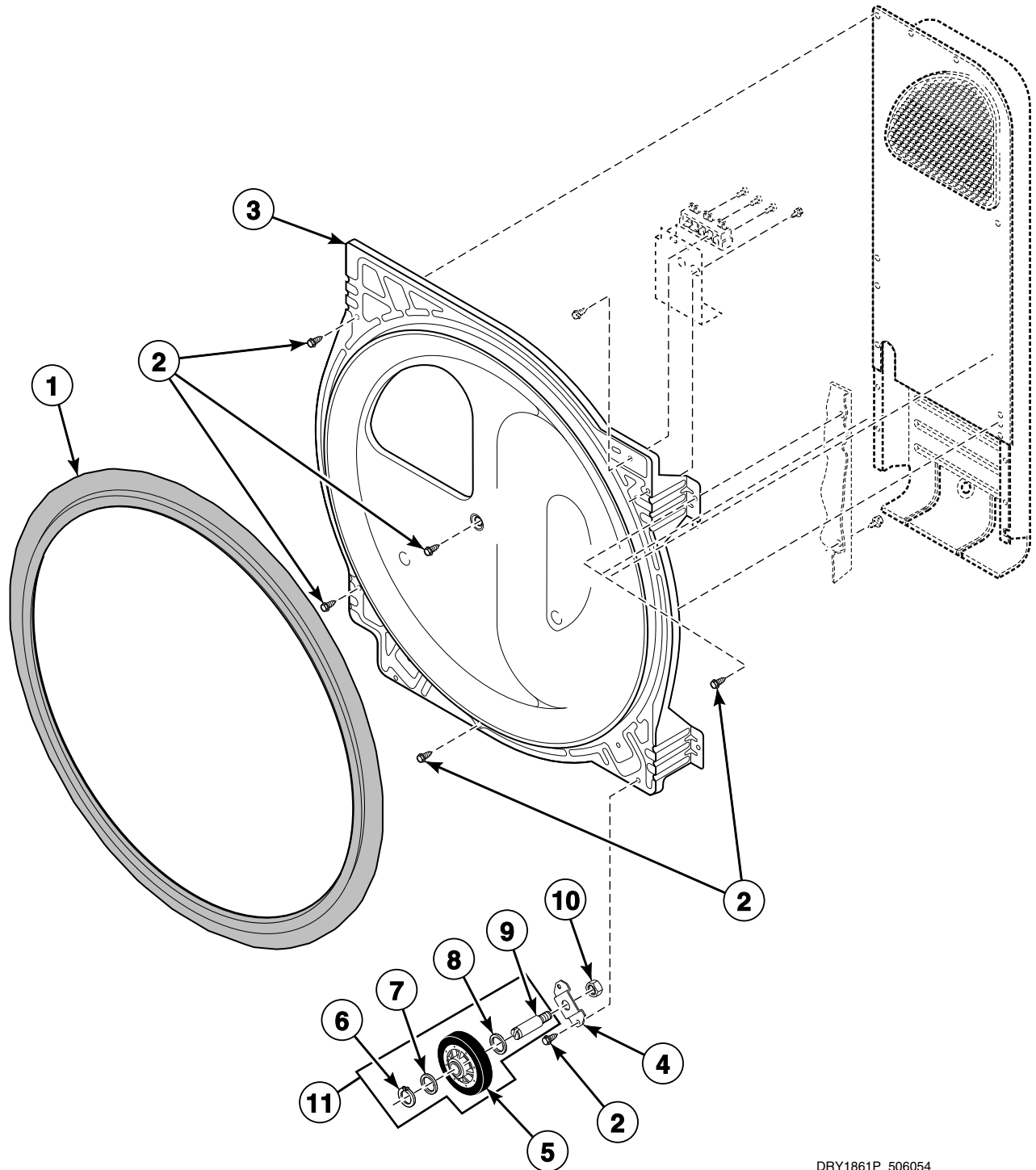


DRY2161P_506054

LGS2 P18

Rear Bulkhead, Felt Seal and Cylinder Roller - 1 Phase Models

All Models Except FDE3TRGS401NW22, FEN16A*G4018, FEN17A*G4018, FES16A*G4018, LEN27A*G4008, LEN27A*G4018, LEN27A*G99M3, LEN37A*G4018, LES27A*G4000, LES27A*G4018, LES28A*G4018, LES37A*G4018, LEZ27A*G4018 and LEZ37A*G4018

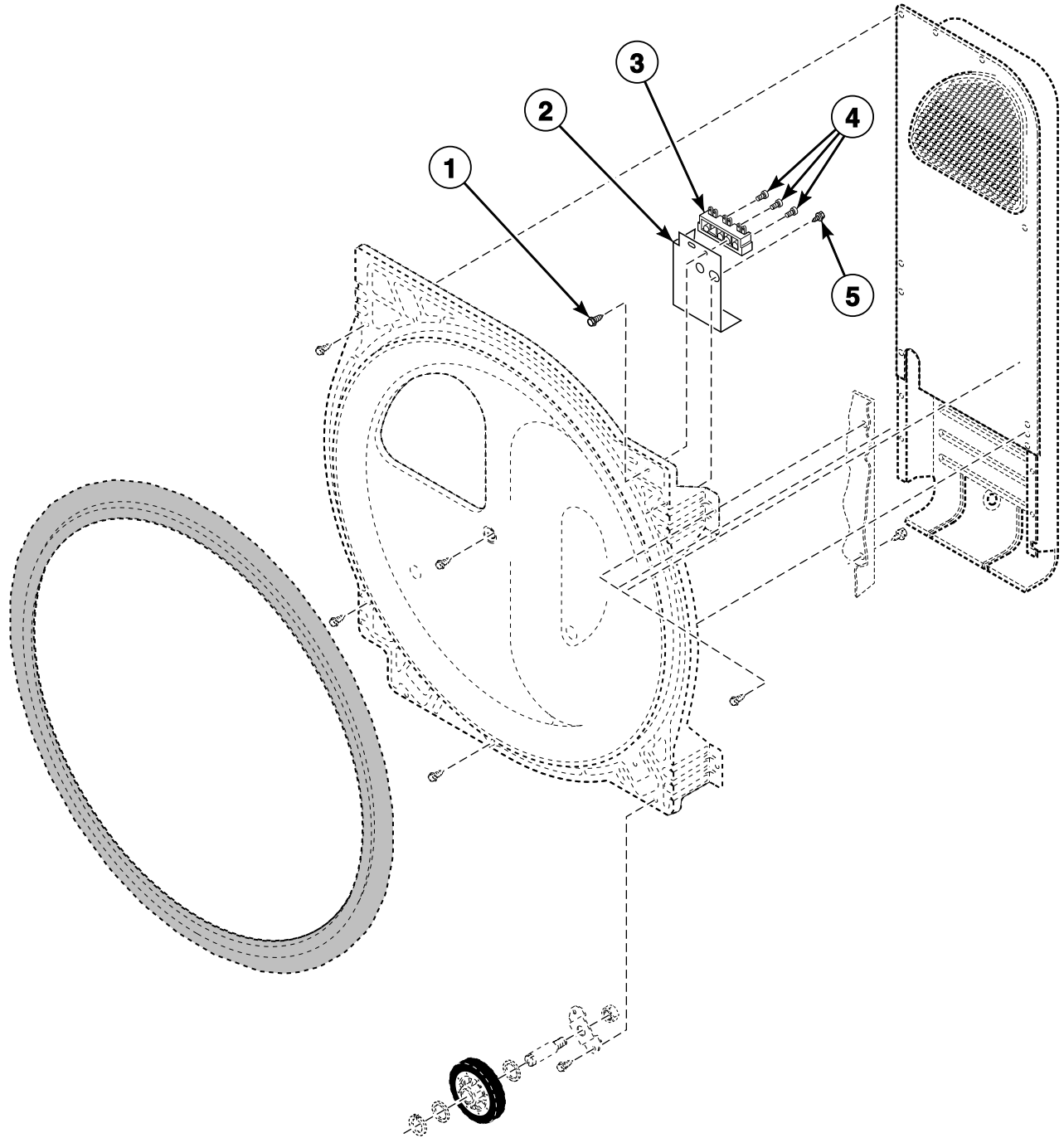


DRY1861P_506054

LGS2 P19

Terminal Block - 1 Phase Models

All Models Except FDE3TRGS401NW22, FEN16A*G4018, FEN17A*G4018, FES16A*G4018, LEN27A*G4008, LEN27A*G4018, LEN27A*G99M3, LEN37A*G4018, LES27A*G4000, LES27A*G4018, LES28A*G4018, LES37A*G4018, LEZ27A*G4018 and LEZ37A*G4018

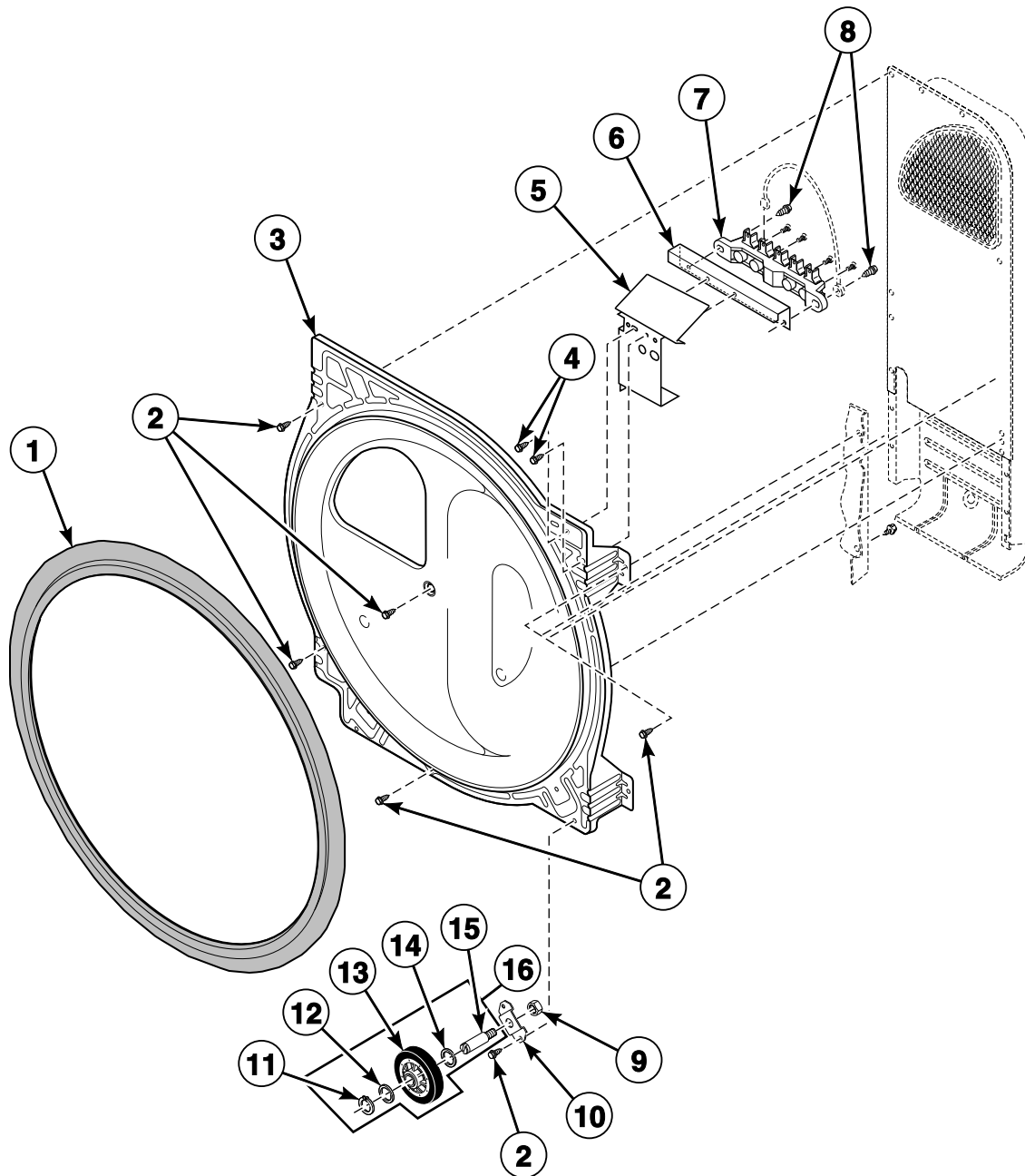


DRY1861PA_506054

LGS2 P20

Rear Bulkhead, Felt Seal, Cylinder Roller and Terminal Block - 3 Phase Models

Models FDE3TRGS401NW22, FEN16A*G4018, FEN17A*G4018, FES16A*G4018, LEN27A*G4008,
LEN27A*G4018, LEN27A*G99M3, LEN37A*G4018, LES27A*G4000, LES27A*G4018, LES28A*G4018,
LES37A*G4018, LEZ27A*G4018 and LEZ37A*G4018

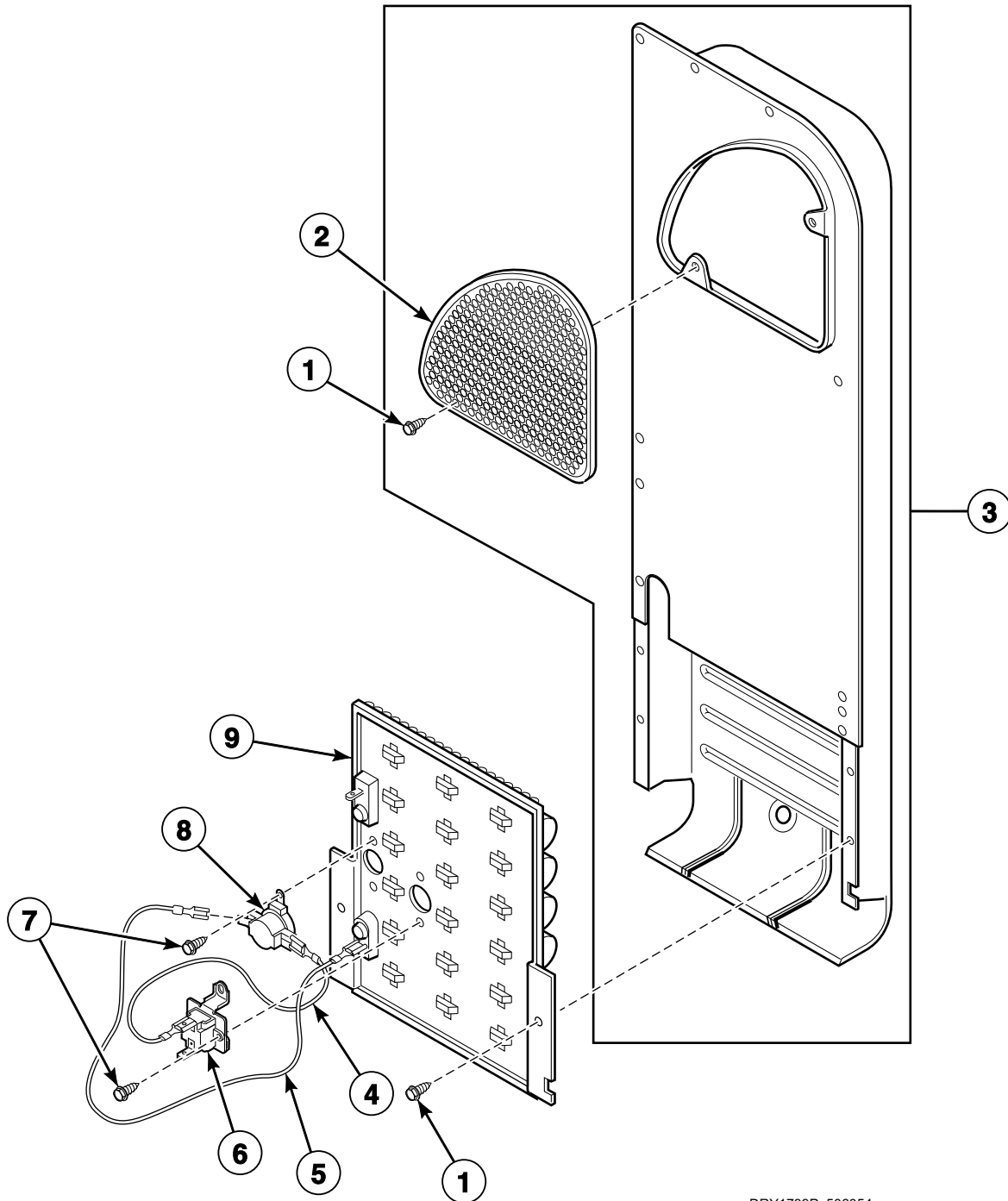


DRY1862P_506054

LGS2 P21

Heater Duct and Element Assembly - 1 Phase Models

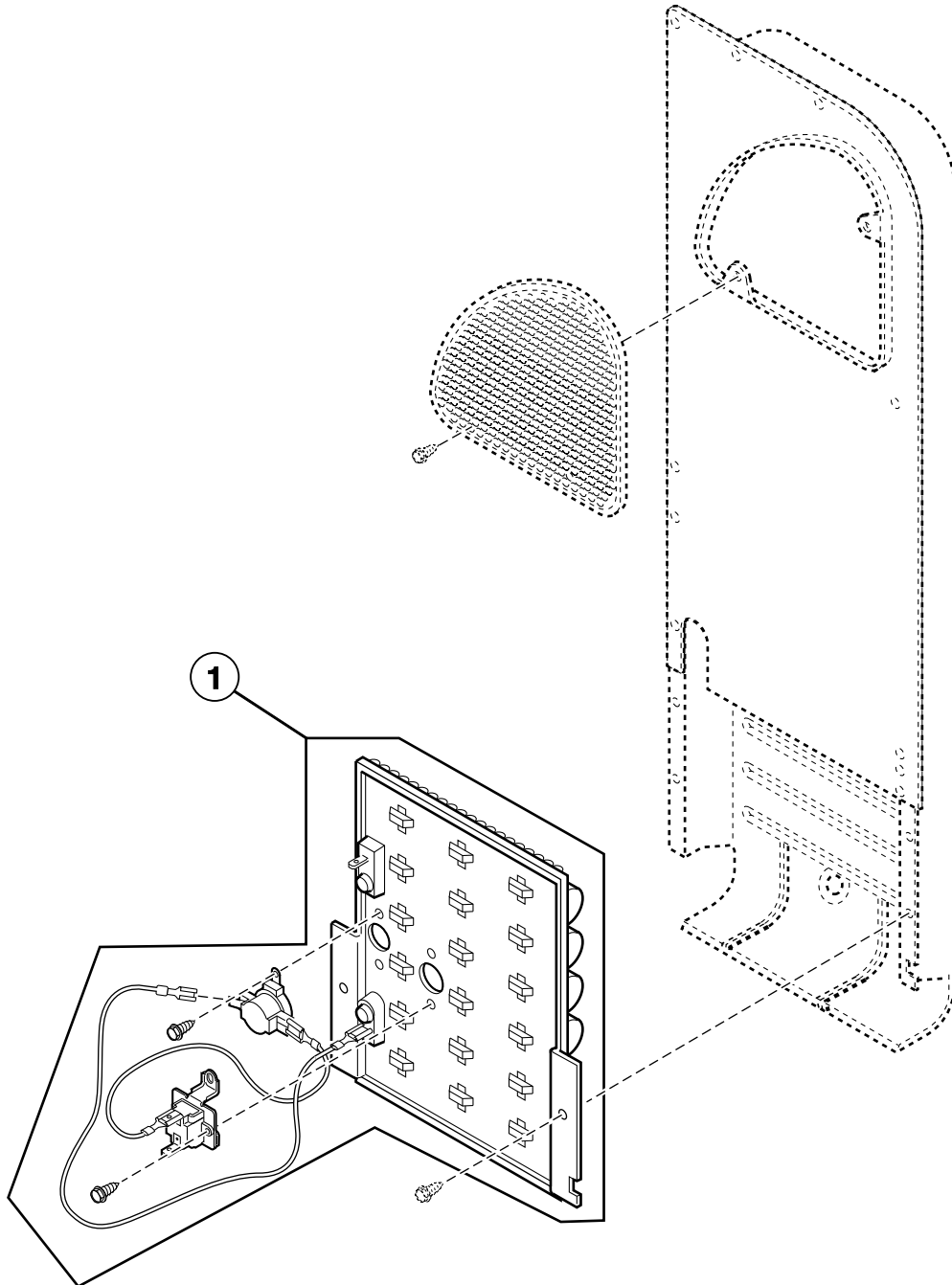
All Electric Models Except FDE3TRGS401NW22, FEN16A*G4018, FEN17A*G4018, FES16A*G4018, LEN27A*G4008, LEN27A*G4018, LEN27A*G99M3, LEN37A*G4018, LES27A*G4000, LES27A*G4018, LES28A*G4018, LES37A*G4018, LEZ27A*G4018 and LEZ37A*G4018



DRY1789P_506054

Heater Kit Assembly - 1 Phase Models

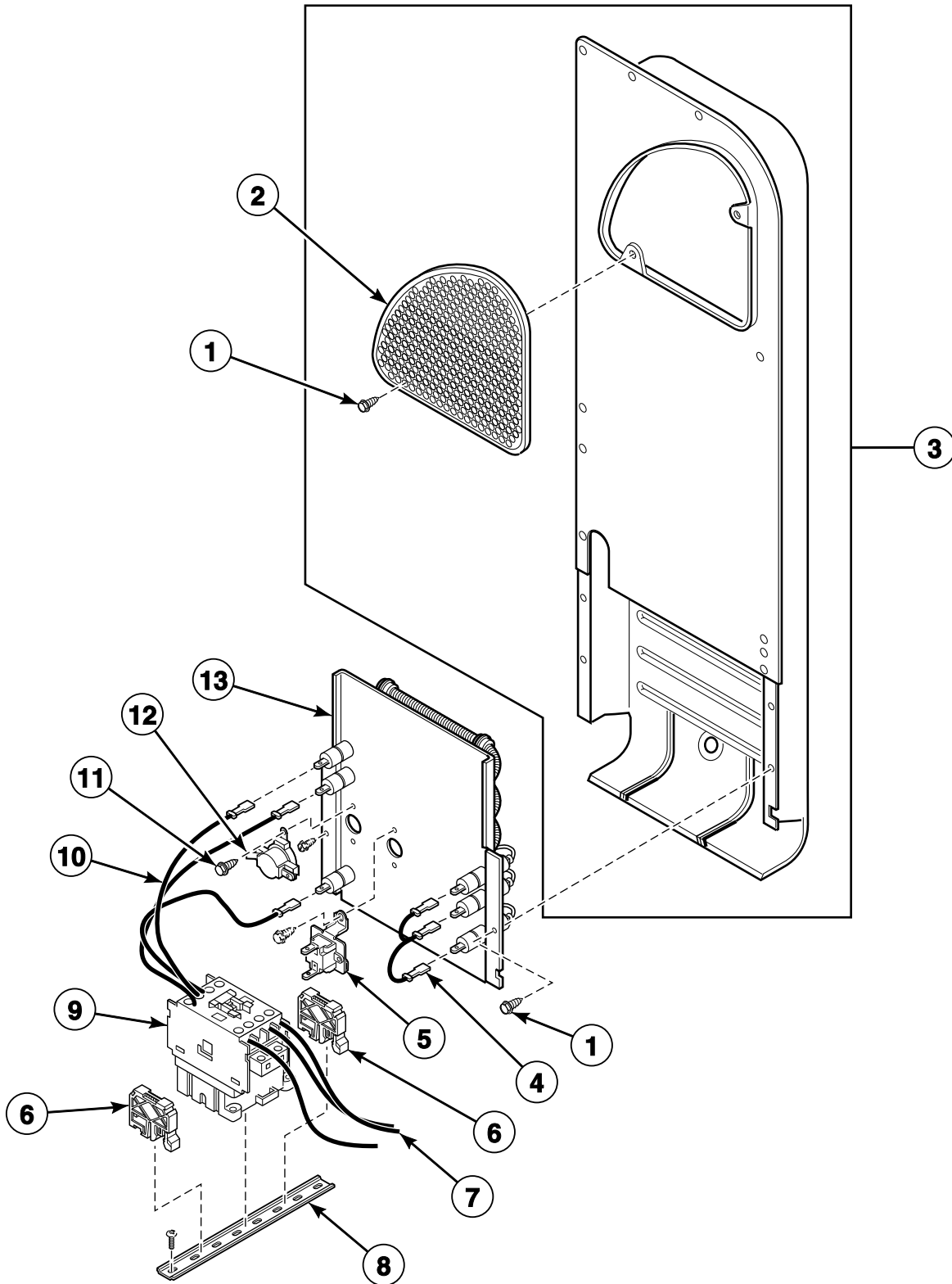
All Electric Models Except FDE3TRGS401NW22, FEN16A*G4018, FEN17A*G4018, FES16A*G4018, LEN27A*G4008, LEN27A*G4018, LEN27A*G99M3, LEN37A*G4018, LES27A*G4000, LES27A*G4018, LES28A*G4018, LES37A*G4018, LEZ27A*G4018 and LEZ37A*G4018



DRY1789PA_506054

Heater Duct and Element Assembly - 3 Phase Models

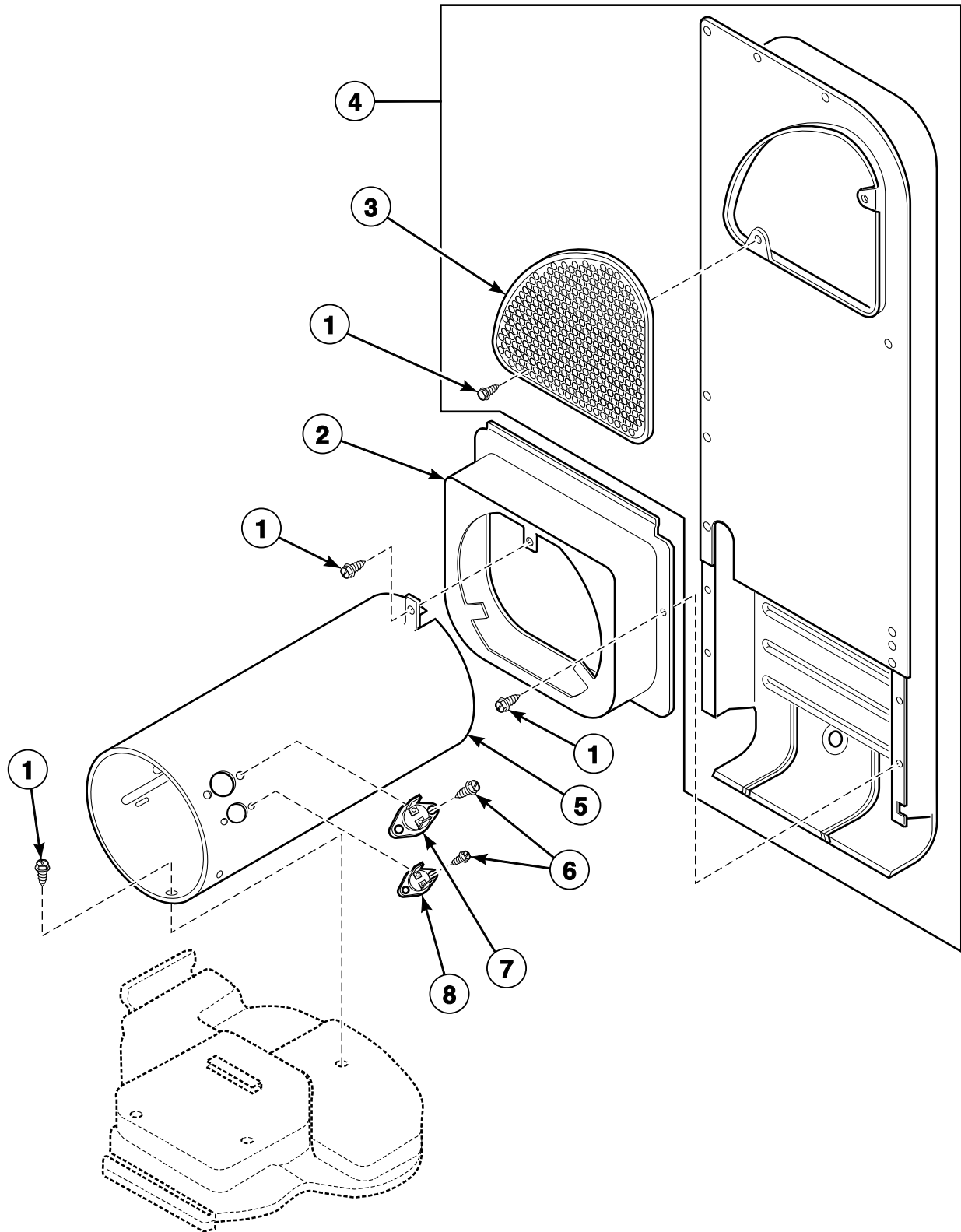
Models FDE3TRGS401NW22, FEN16A*G4018, FEN17A*G4018, FES16A*G4018, LEN27A*G4008, LEN27A*G4018, LEN27A*G99M3, LEN37A*G4018, LES27A*G4000, LES27A*G4018, LES28A*G4018, LES37A*G4018, LEZ27A*G4018 and LEZ37A*G4018



DRY10B_506054

Heater Duct Assembly

Gas Models

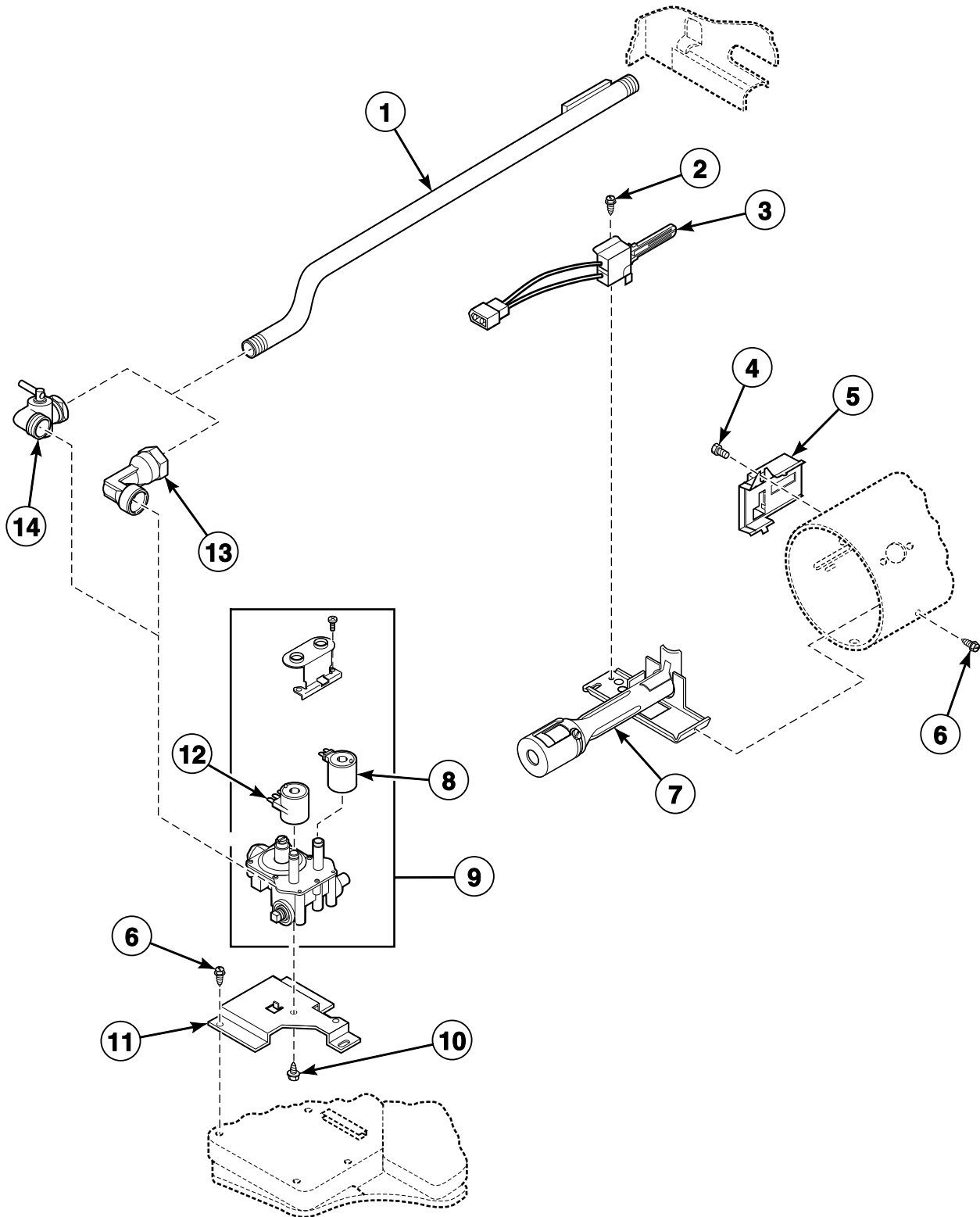


DRY1863P_506054

LGS2 P25

Gas Valve and Igniter

All Gas Models Except LGG37A*F3058, LGK37A*F3058, LGS37A*F3058,
LGS37A*G3013, LGS37A*G3080 and LGZ37A*G3013

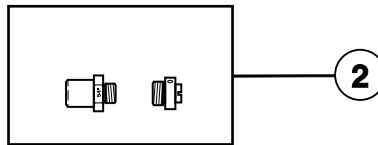
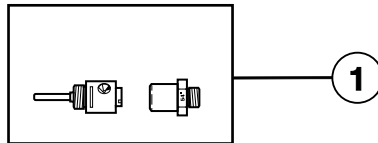


DRY2150P_506054

LGS2 P26

Gas Conversion Kits

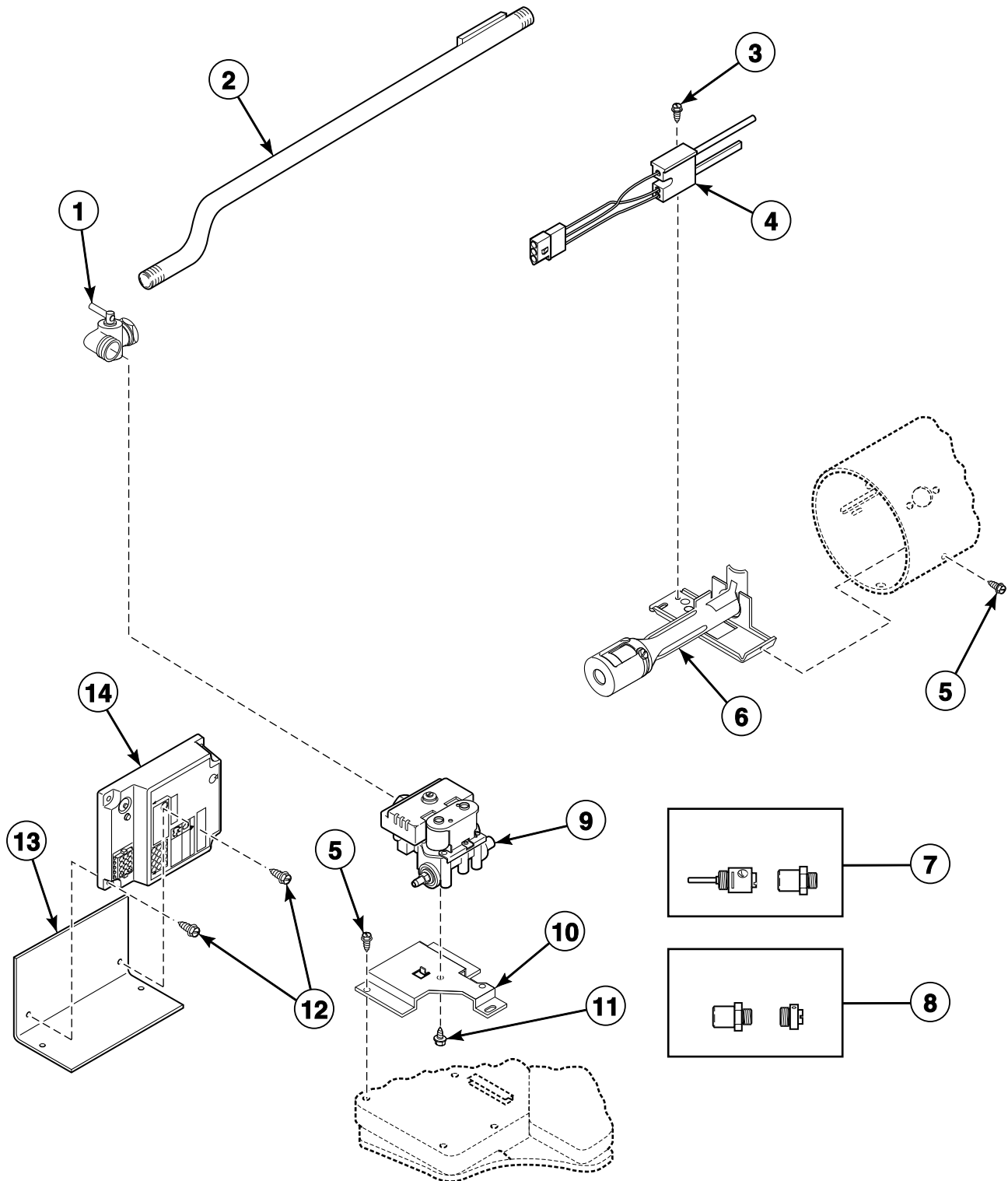
All Gas Models Except LGG37A*F3058, LGK37A*F3058, LGS37A*F3058,
LGS37A*G3013, LGS37A*G3080 and LGZ37A*G3013



DRY2151P_506054

Gas Valve, Igniter, Ignition Control and Gas Conversion Kits

Models LGG37A*F3058, LGK37A*F3058, LGS37A*F3058, LGS37A*G3013,
LGS37A*G3080 and LGZ37A*G3013

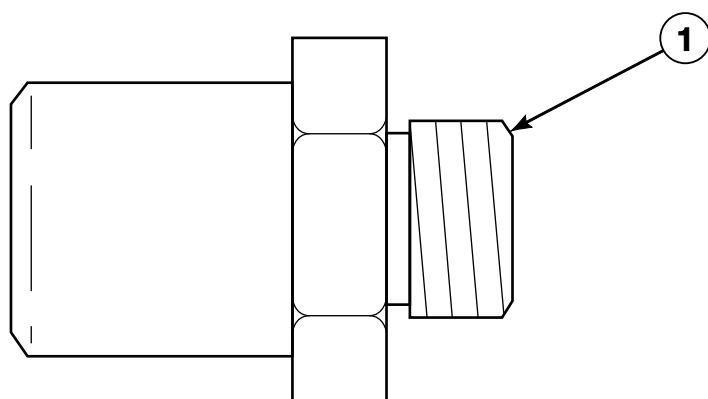


DRY2133P_506054

LGS2 P28

Burner Orifice Spuds - For Higher Elevations (Drawing 1 of 2)

Liquid Petroleum Gas Models

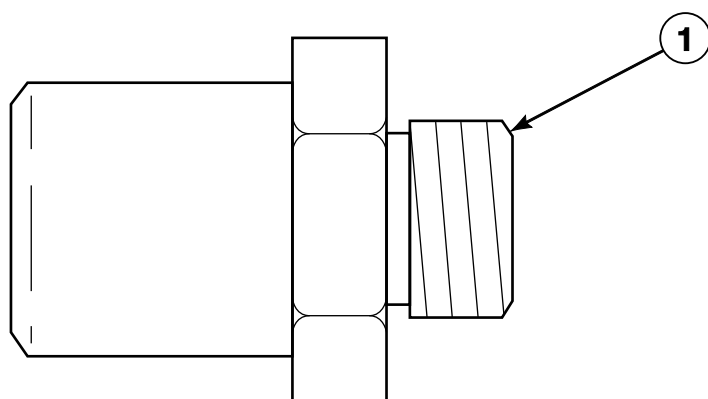


DRY2266P_506054

LGS2 P29

Burner Orifice Spuds - For Higher Elevations (Drawing 2 of 2)

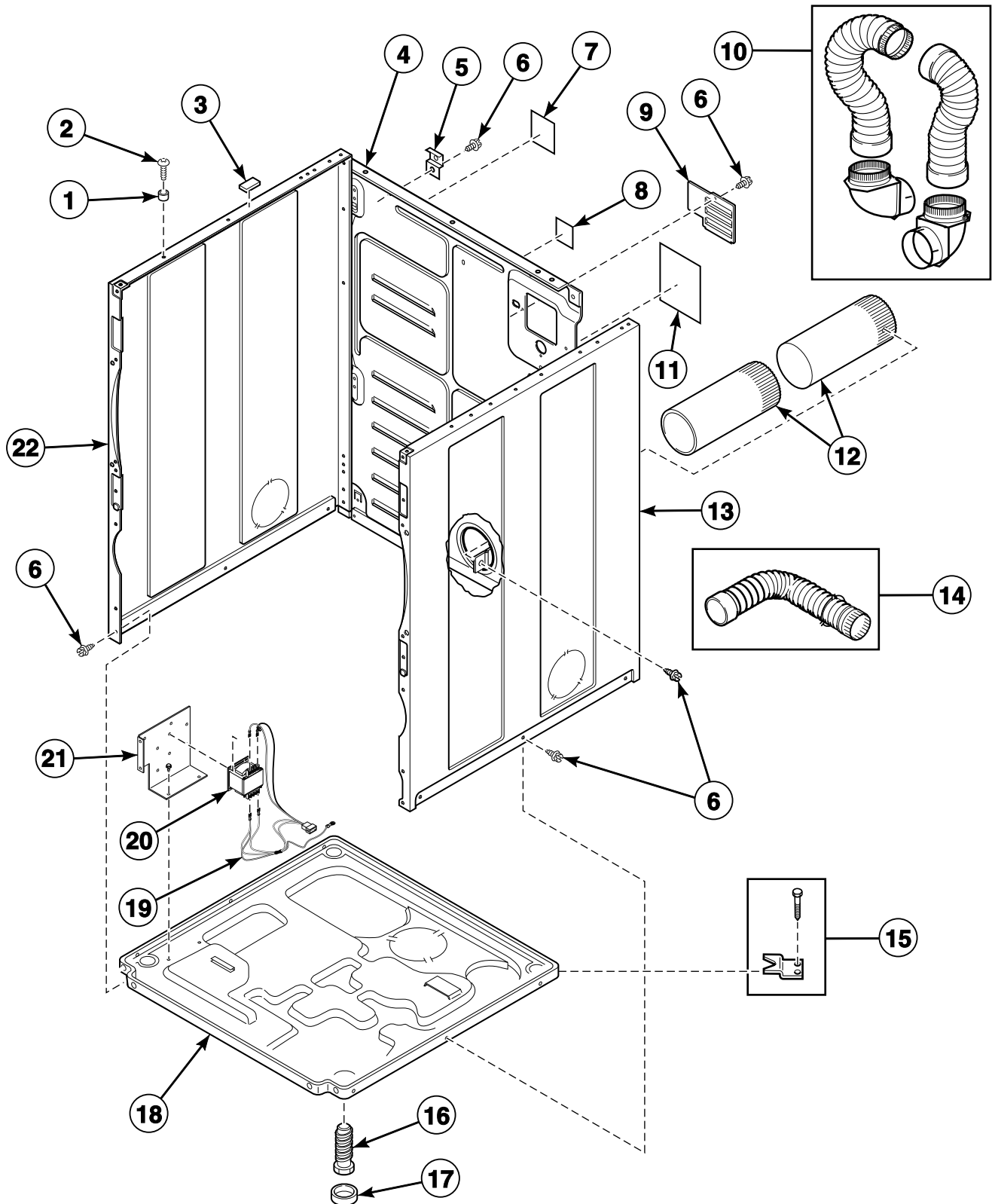
Natural Gas Models



DRY2266P_506054

LGS2 P30

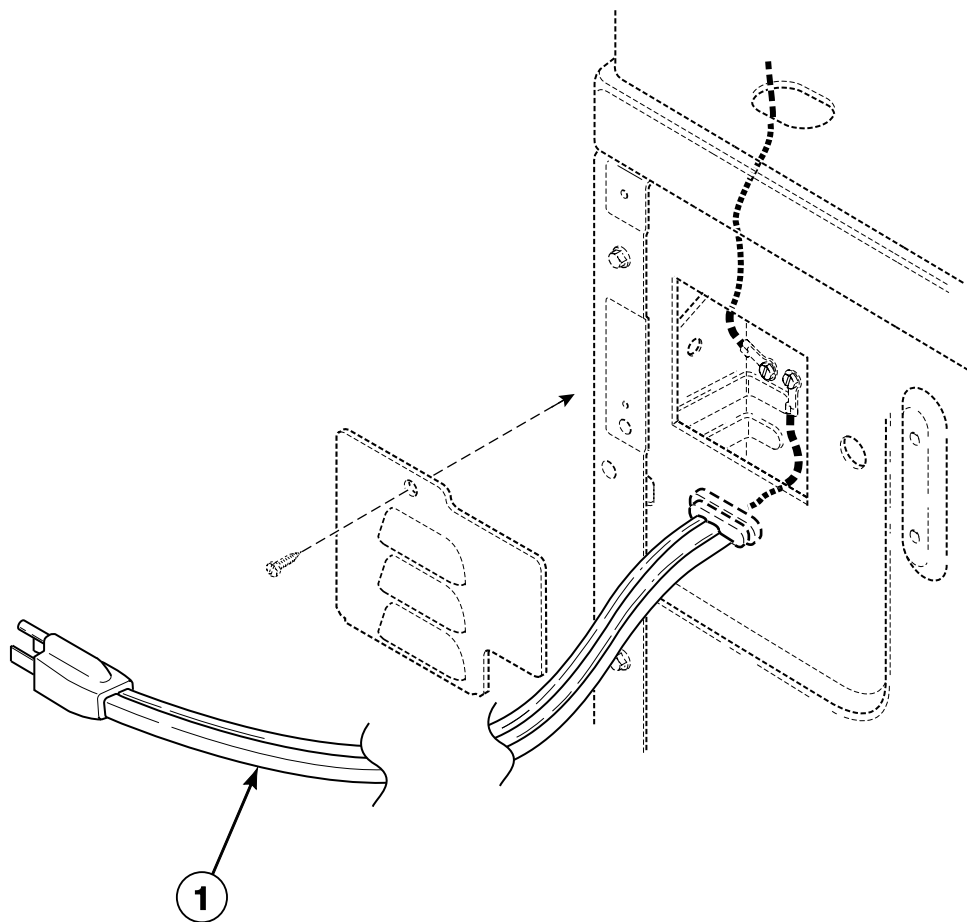
Cabinet, Exhaust Duct and Base



DRY2220P_506054

LGS2 P31

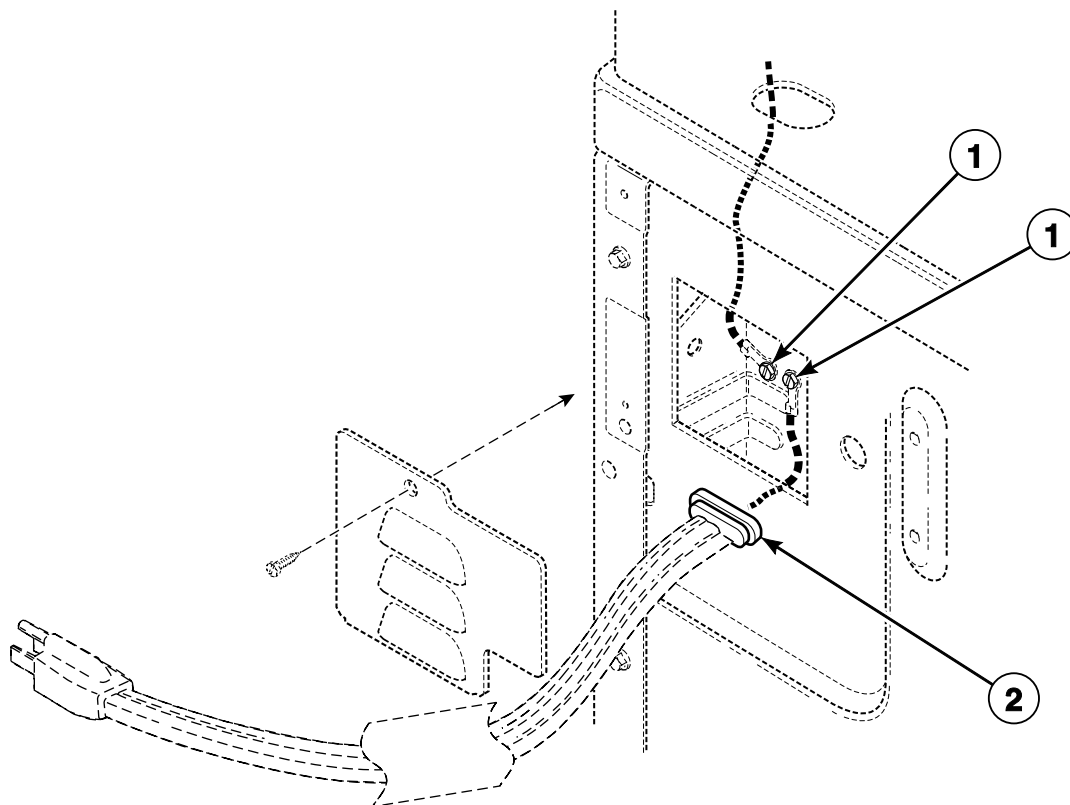
Power Cord



DRY1866PA_506054

LGS2 P32

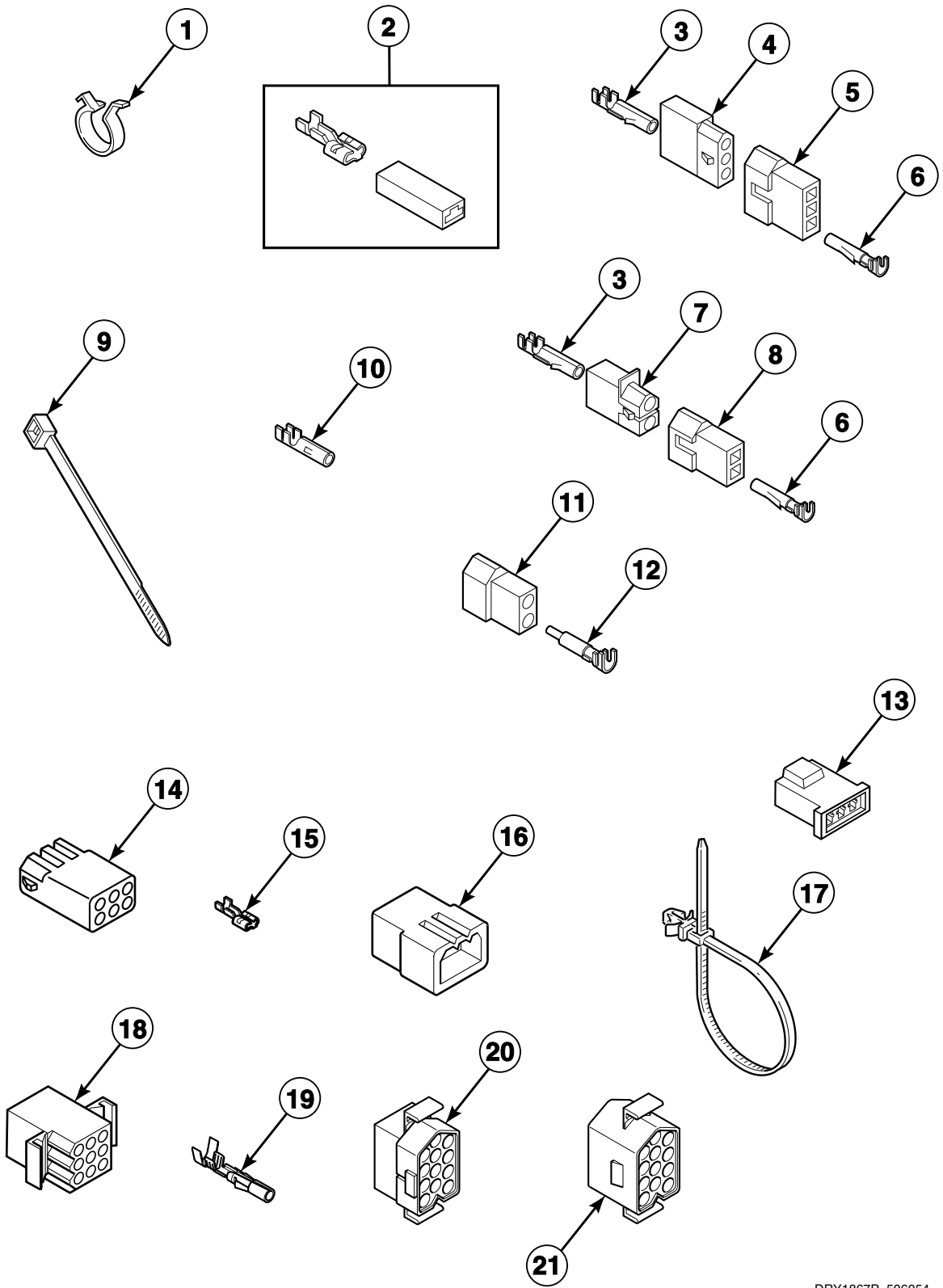
Strain Relief



DRY1866PB_506054

LGS2 P33

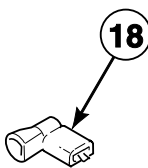
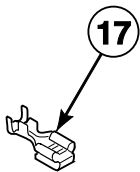
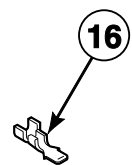
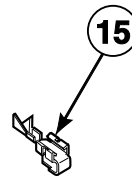
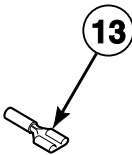
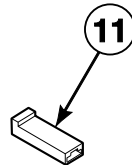
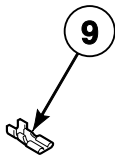
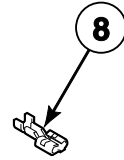
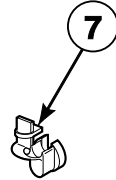
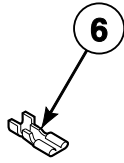
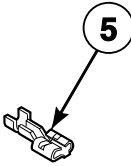
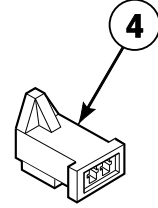
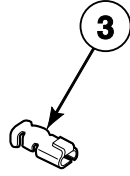
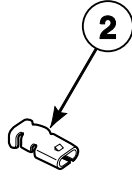
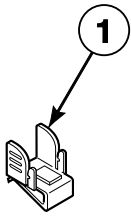
Terminal Block and Terminals



DRY1867P_506054

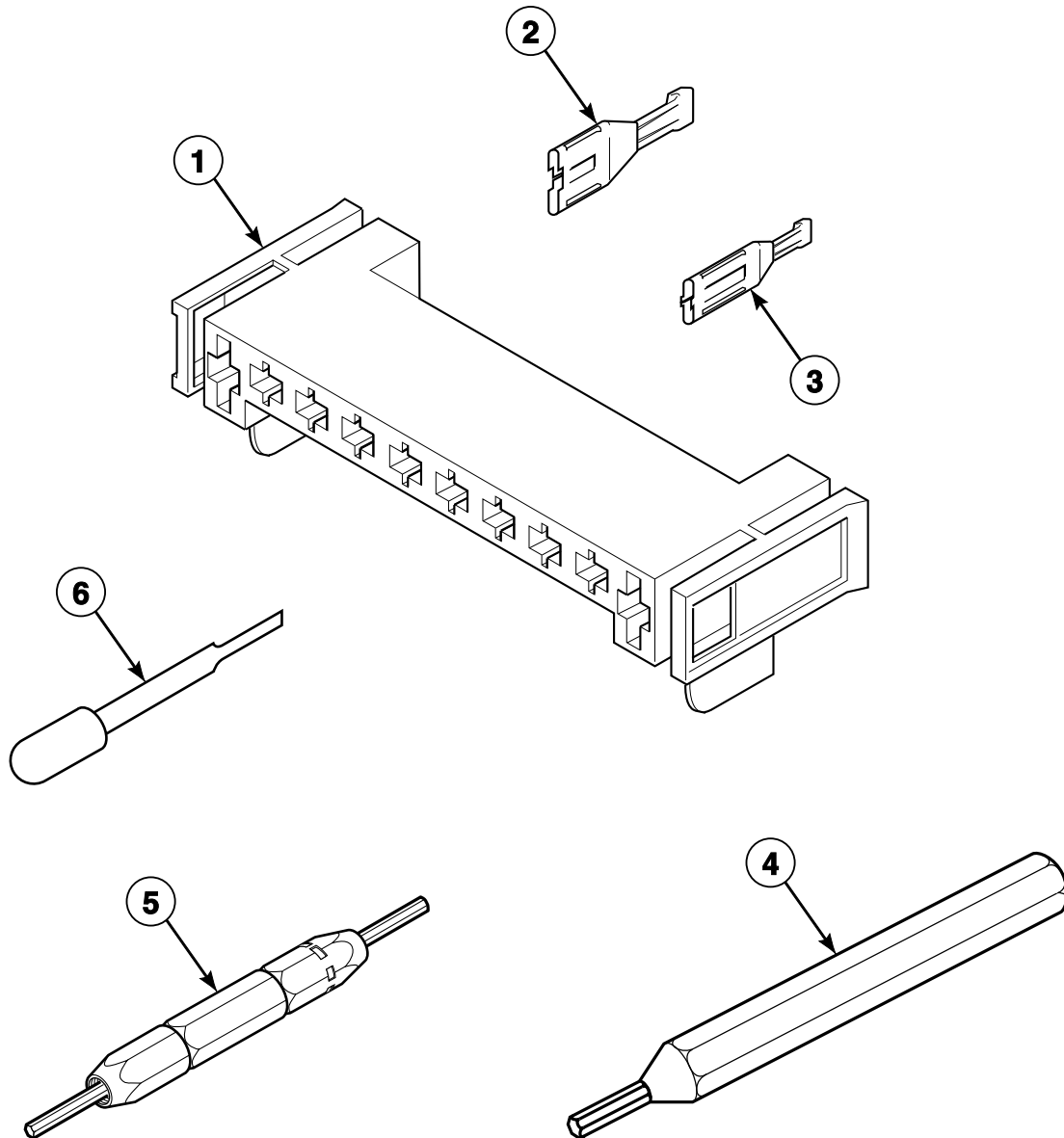
LGS2 P34

Terminals



D322P_506054

Motor Connection Block, Terminal Extractor Tools

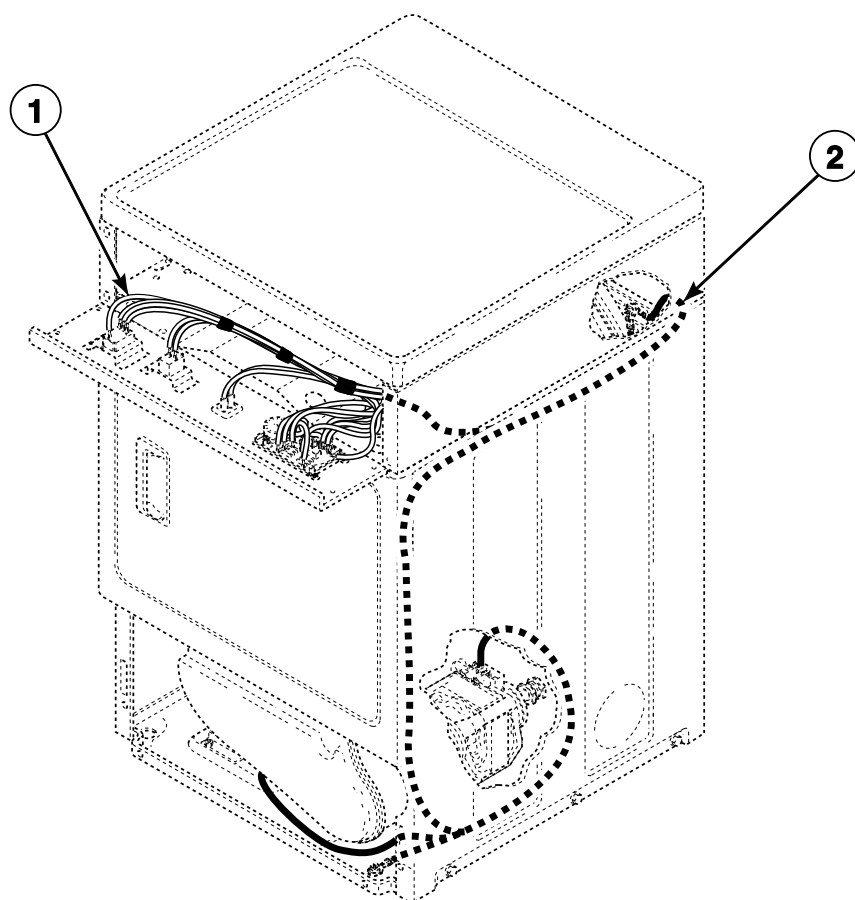


DRY1877P_506054

LGS2 P36

Wire Harnesses and Wires - Front Control Models (Drawing 1 of 3)

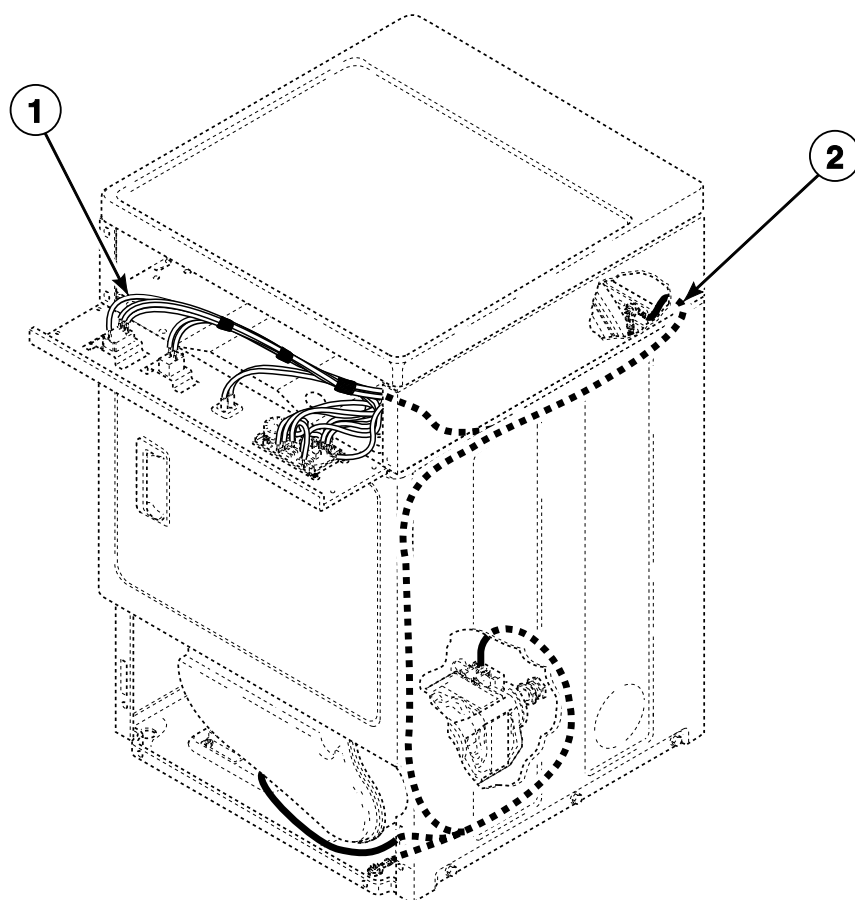
All Front Control Models Except ADE41FSS171TN03, BDE30FGS171CW01,
ZDE41FSS171CN01 and ZDE4BFGS171CW01



DRY2046P_506054

Wire Harnesses and Wires - Front Control Models (Drawing 2 of 3)

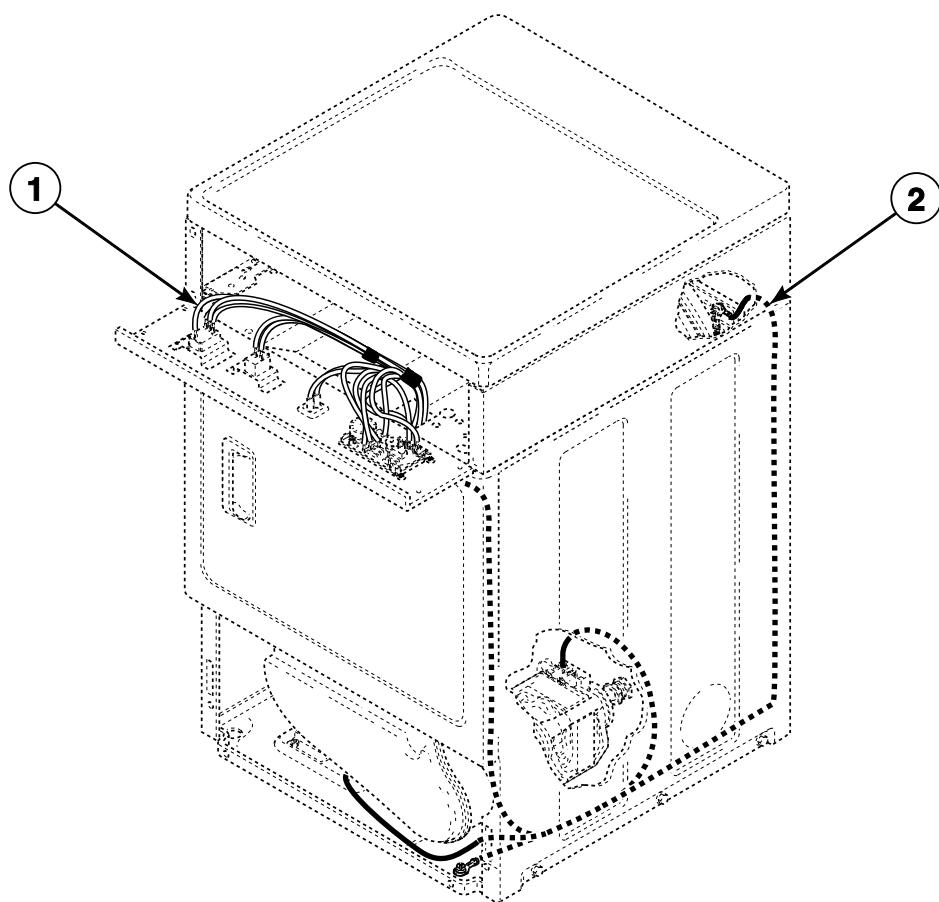
Models ADE41FSS171TN03, BDE30FGS171CW01, ZDE41FSS171CN01 and ZDE4BFGS171CW01
Models Through Serial No. 1303025314



DRY2046P_506054

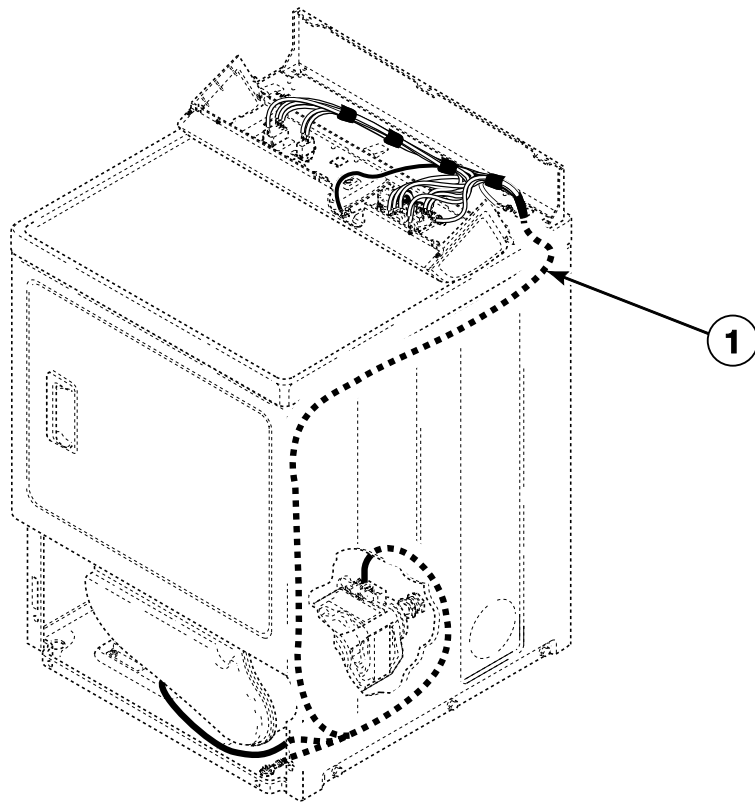
Wire Harnesses and Wires - Front Control Models (Drawing 3 of 3)

Models ADE41FSS171TN03, BDE30FGS171CW01, ZDE41FSS171CN01 and ZDE4BFGS171CW01
Models Starting Serial No. 1303025315



DRY2290P_506054

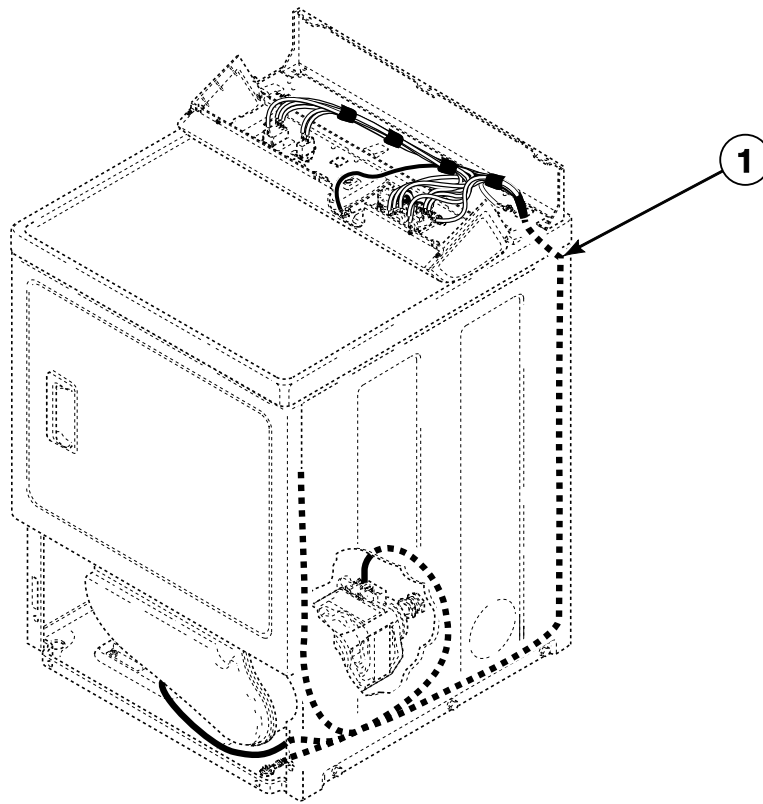
Wire Harnesses and Wires - Rear Control Models Through Serial No. 1207



DRY2047P_506054

LGS2 P40

Wire Harnesses and Wires - Rear Control Models Starting Serial No. 1207



DRY2268P_506054