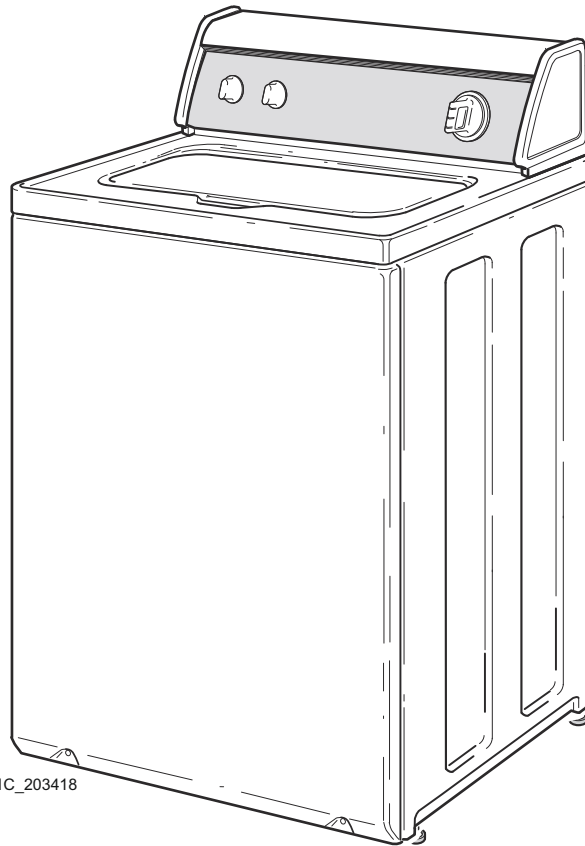


# Home Automatic Washers **LWN1**

Refer to Page 3 for Model Numbers



W001C\_203418

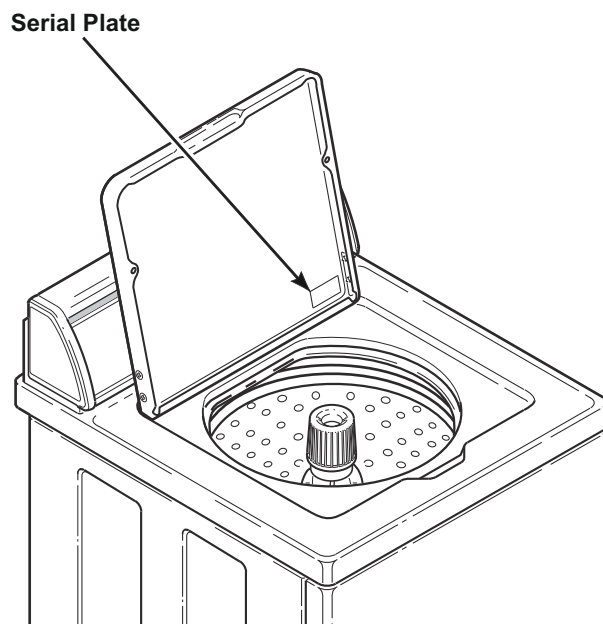
## Parts Ordering Information

If literature or replacement parts are required, contact the source from whom the machine was purchased or contact Alliance Laundry Systems at \_\_\_\_\_ for the name and address of the nearest authorized parts distributor.

For technical assistance, call either of the numbers listed below:

## Serial Plate Location

When calling or writing about your product, be sure to mention model and serial numbers. Model and serial numbers are located on serial plate(s) as shown.



W429S\_203418

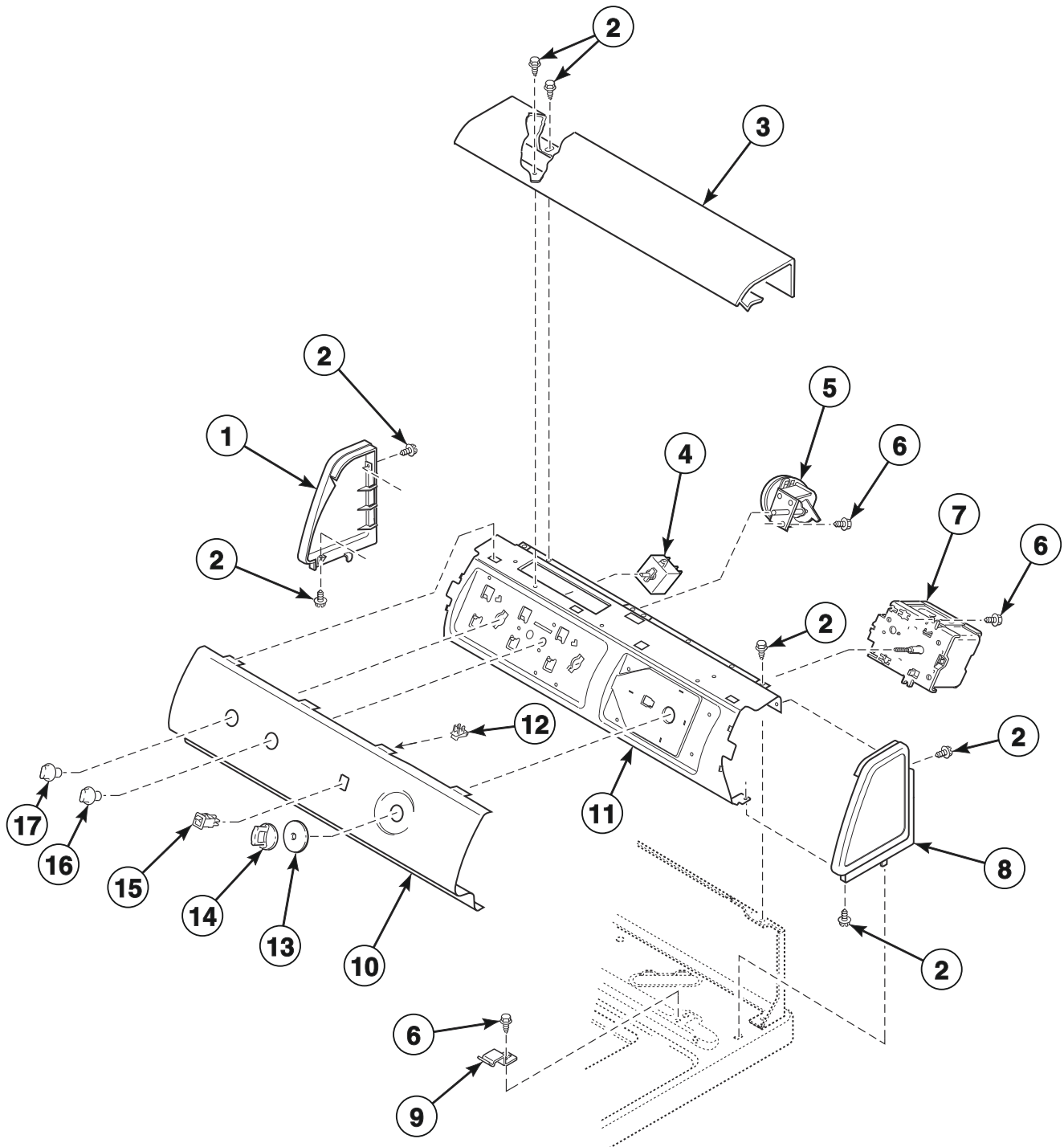
## Model Identification

Information in this manual is applicable to these washer models:

AWNE82SP113FW01	LWN432PP113FW28	YWNE52PP113CW01
AWNE92SP113FW01	LWN432SP113FW28	YWNE52SP303EW01
DWN432SP113CW01	LWNE52PP113ZW01	YWNE52SP303UW01
DWN432SP113CW04	LWNE52PP303SW01	YWNE52SP543RW01
FWNE52SP303ZW01	LWNE52SP103ZW01	YWNE52SP543ZW01
FWNE52SP303ZW14	LWNE52SP113FQ01	ZWN432SP113CW01
	LWNE52SP113FW01	ZWN432SP113CW04
	LWNE52SP113ZW01	ZWNE82SP113CW01
	LWNE52SP303AW01	ZWNE82SP113FW01
	LWNE52SP303BW01	ZWNE92SP113FW01
	LWNE52SP303EW01	
	LWNE52SP303NW26	
	LWNE52SP303SW01	
	LWNE52SP303UW01	
	LWNE52SP303ZW01	
	LWNE52SP543RW01	
	LWNE52SP543ZW01	
	LWNE52WP113FW01	
	LWNE52WP303ZW01	
	LWNE52WP543RW01	
	LWNE52WP543ZW01	

# Graphic Panel, Control Support Panel and Controls

Models DWN432SP113CW01, DWN432SP113CW04, LWN432PP113FW28, LWN432SP113FW28, ZWN432SP113CW01 and ZWN432SP113CW04

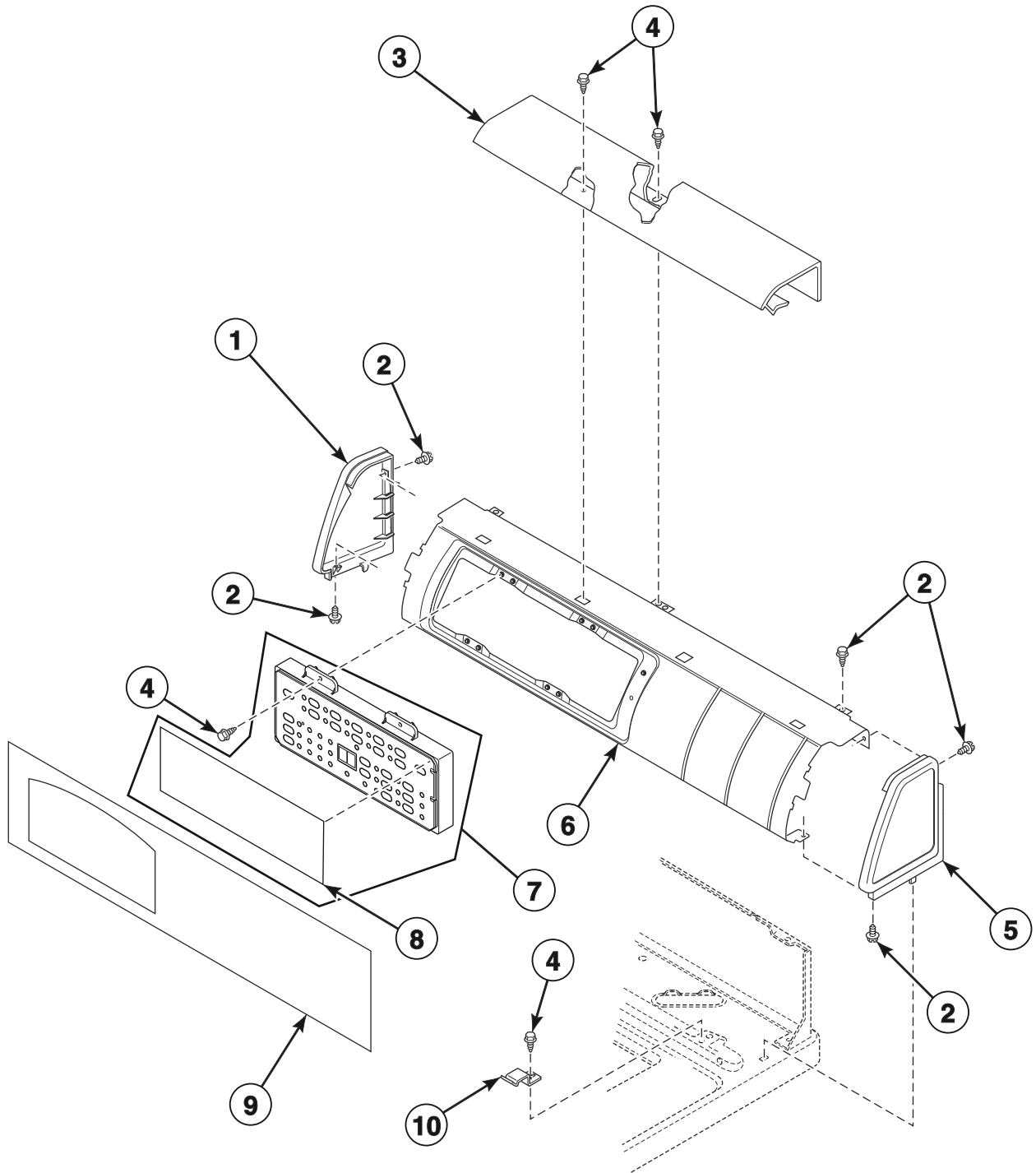


TLW1808P\_203418

# LWN1 P1

# Graphic Panel, Control Support Panel and Controls

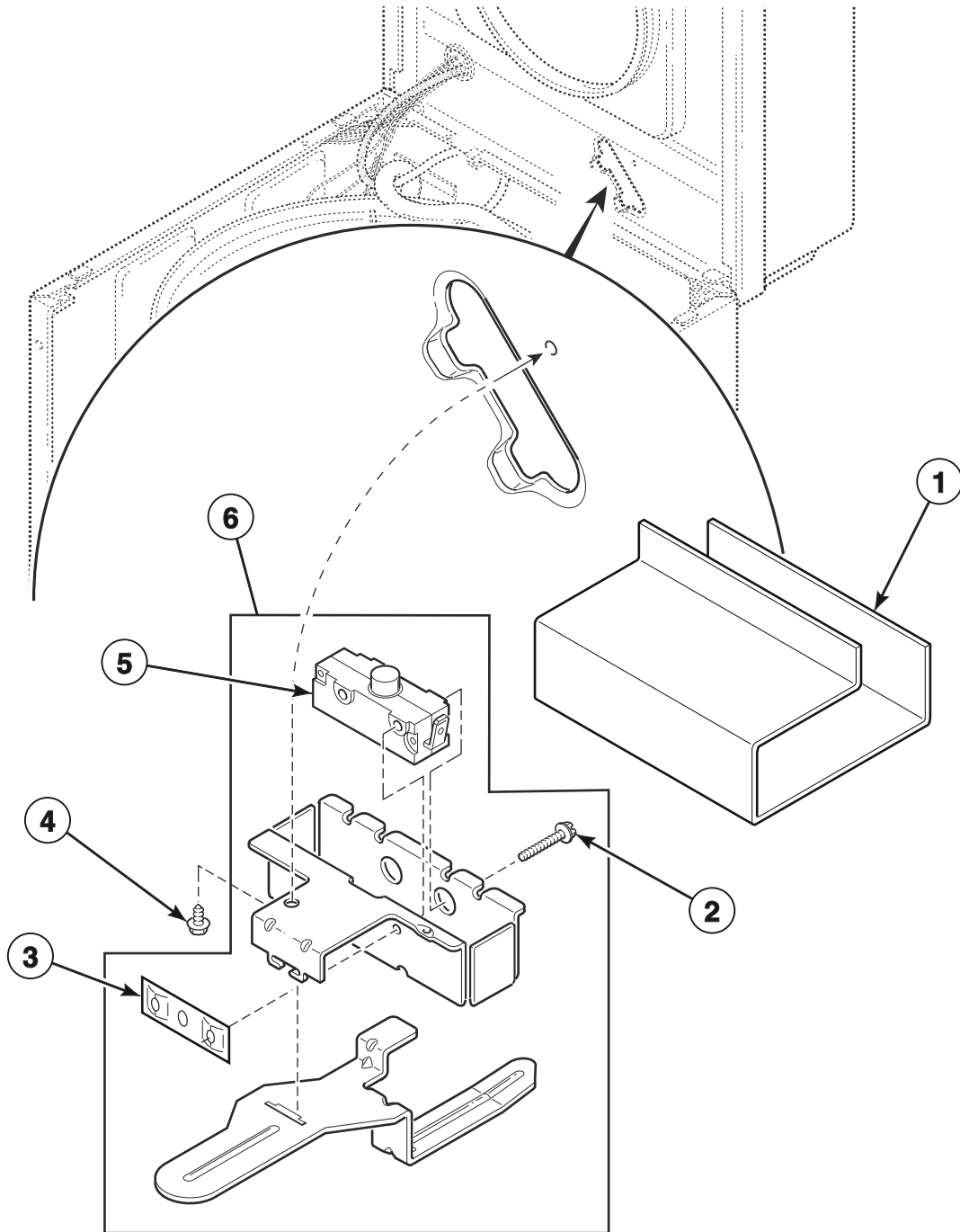
All Models Except DWN432SP113CW01, DWN432SP113CW04, LWN432PP113FW28,  
LWN432SP113FW28, ZWN432SP113CW01 and ZWN432SP113CW04



TLW1784P\_203418

# LWN1 P2

## Lid Switch Assembly

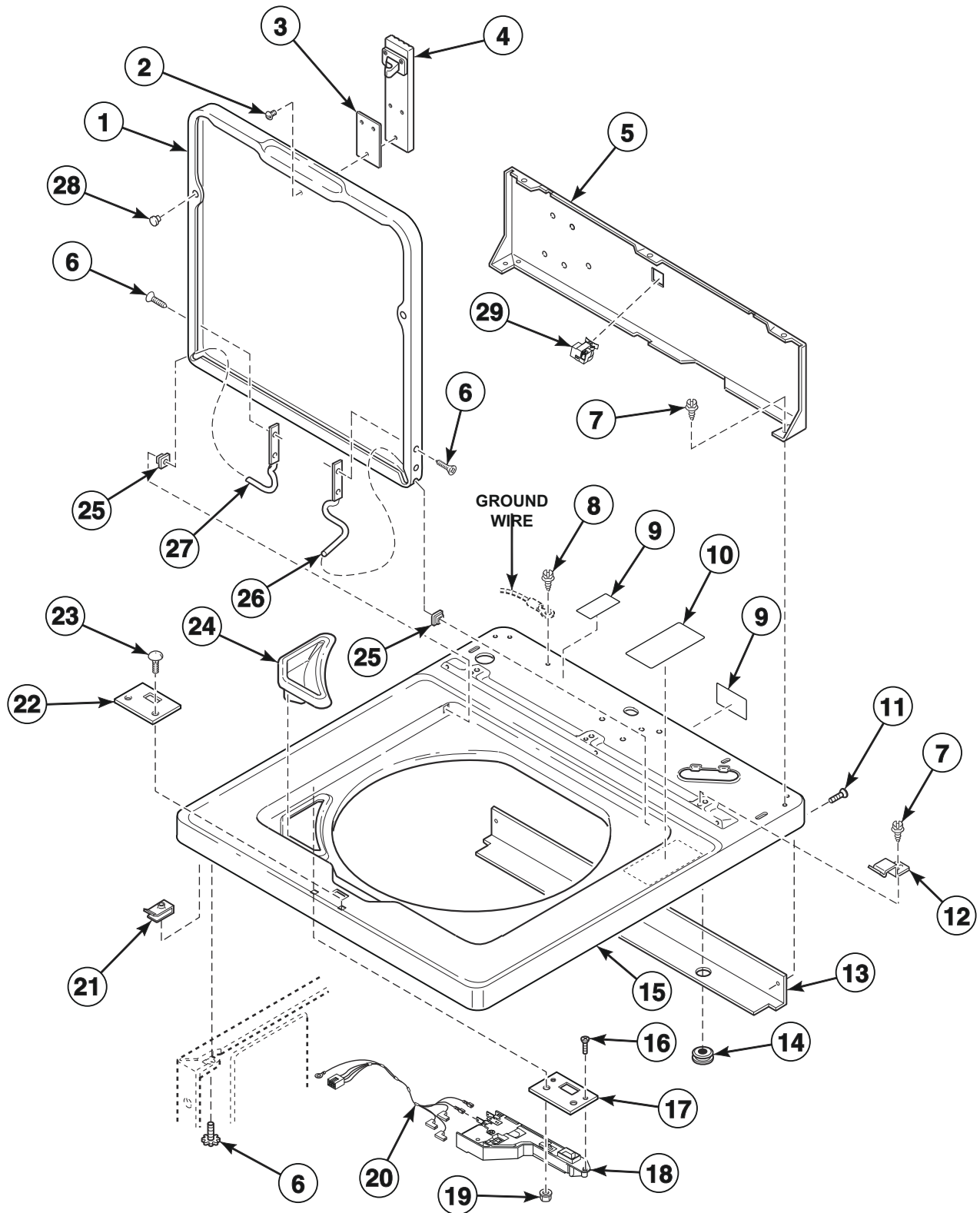


TLW1797P\_203418

# LWN1 P3

# Top, Lid and Lid Lock

Models LWNE52SP303EW01, LWNE52SP303UW01, YWNE52SP303EW01 and YWNE52SP303UW01

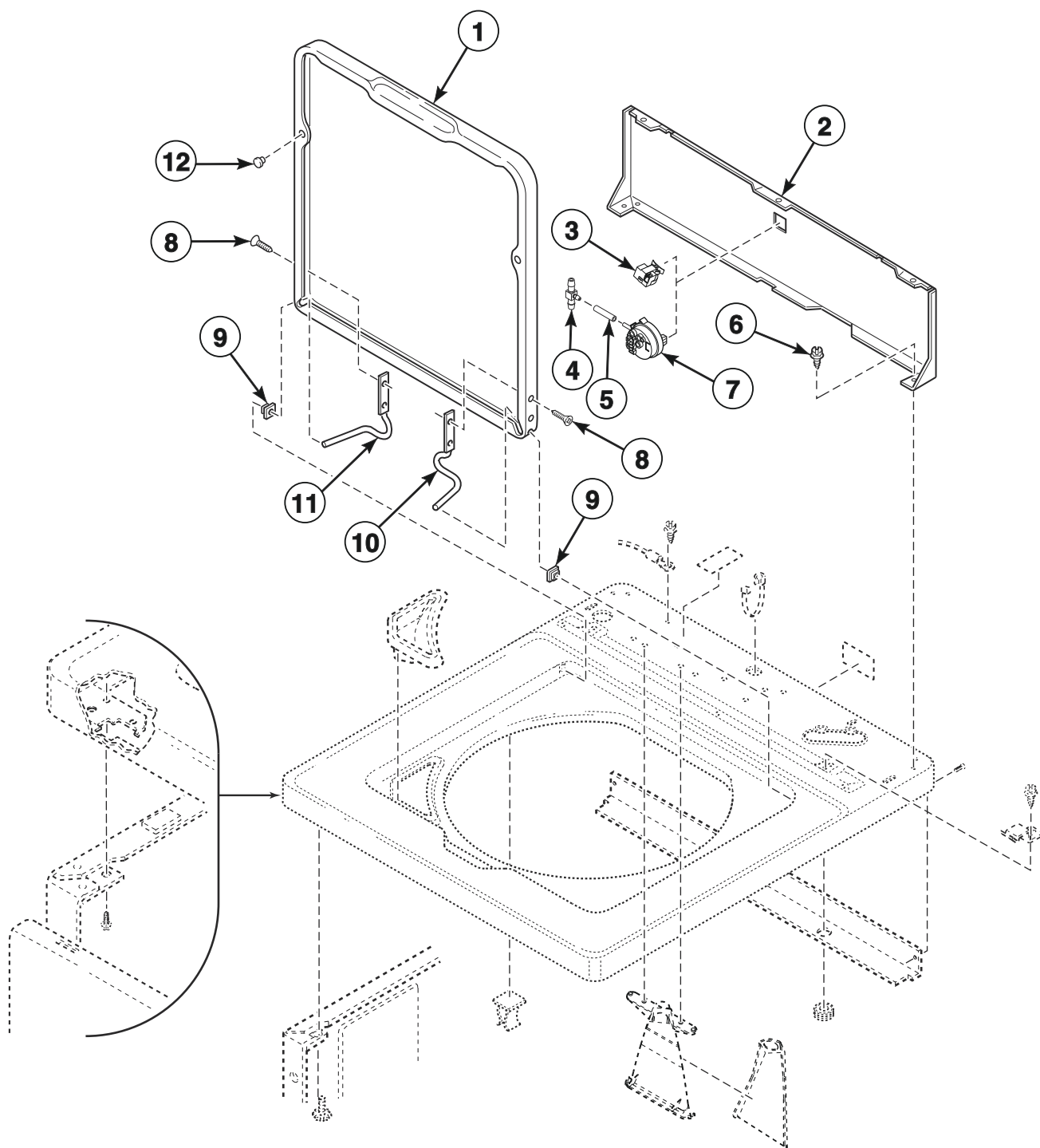


TLW1821P\_203418

# LWN1 P4

## Lid and Hood Back Panel

All Models Except LWNE52SP303EW01, LWNE52SP303UW01, YWNE52SP303EW01 and YWNE52SP303UW01



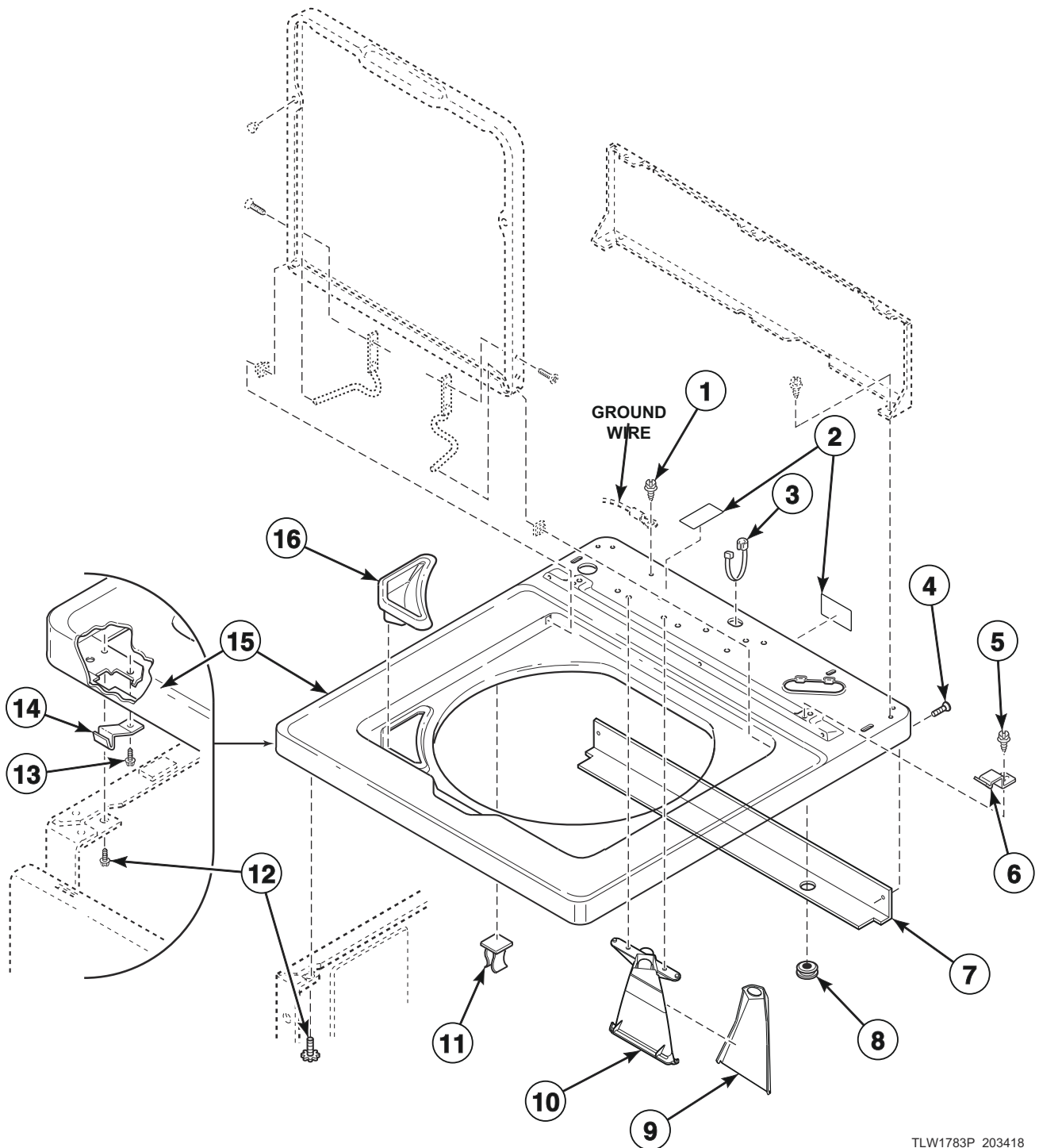
TLW1823P\_203418

# LWN1 P5



## Top

All Models Except LWNE52SP303EW01, LWNE52SP303UW01, YWNE52SP303EW01 and YWNE52SP303UW01

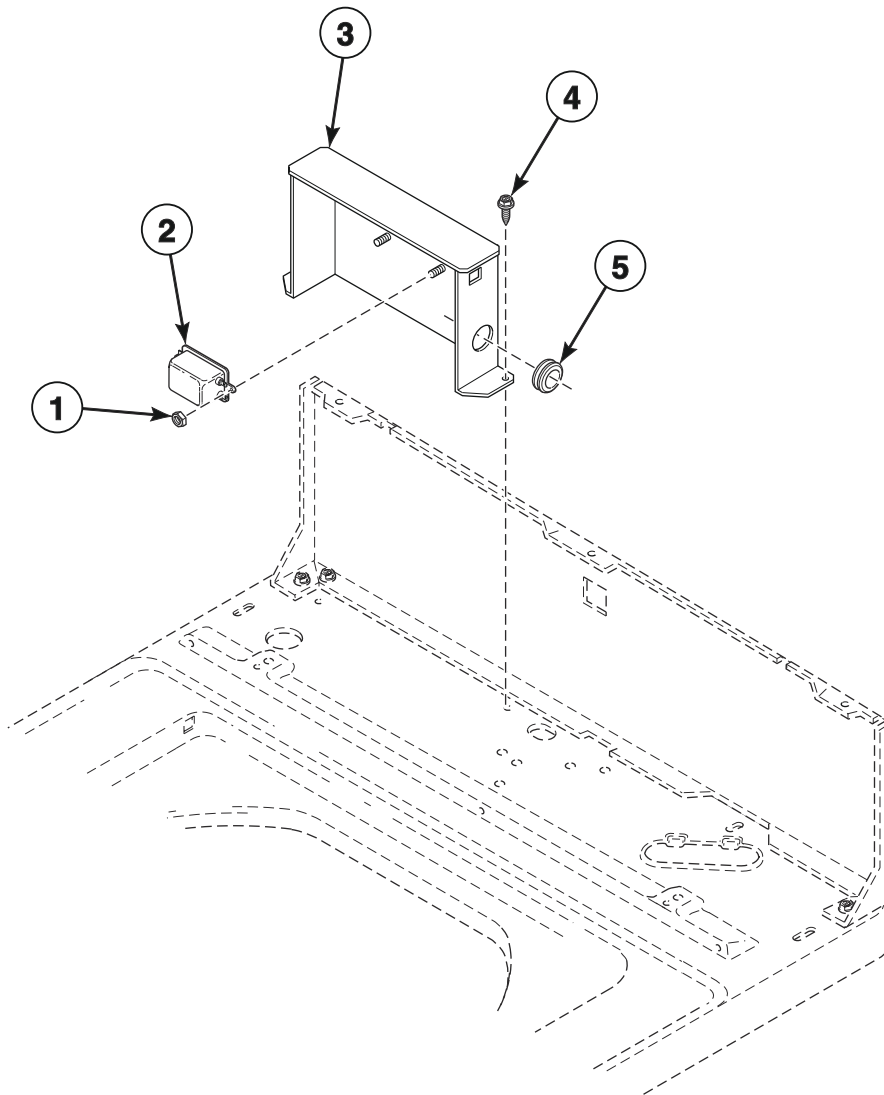


TLW1783P\_203418

# LWN1 P6

## Junction Box

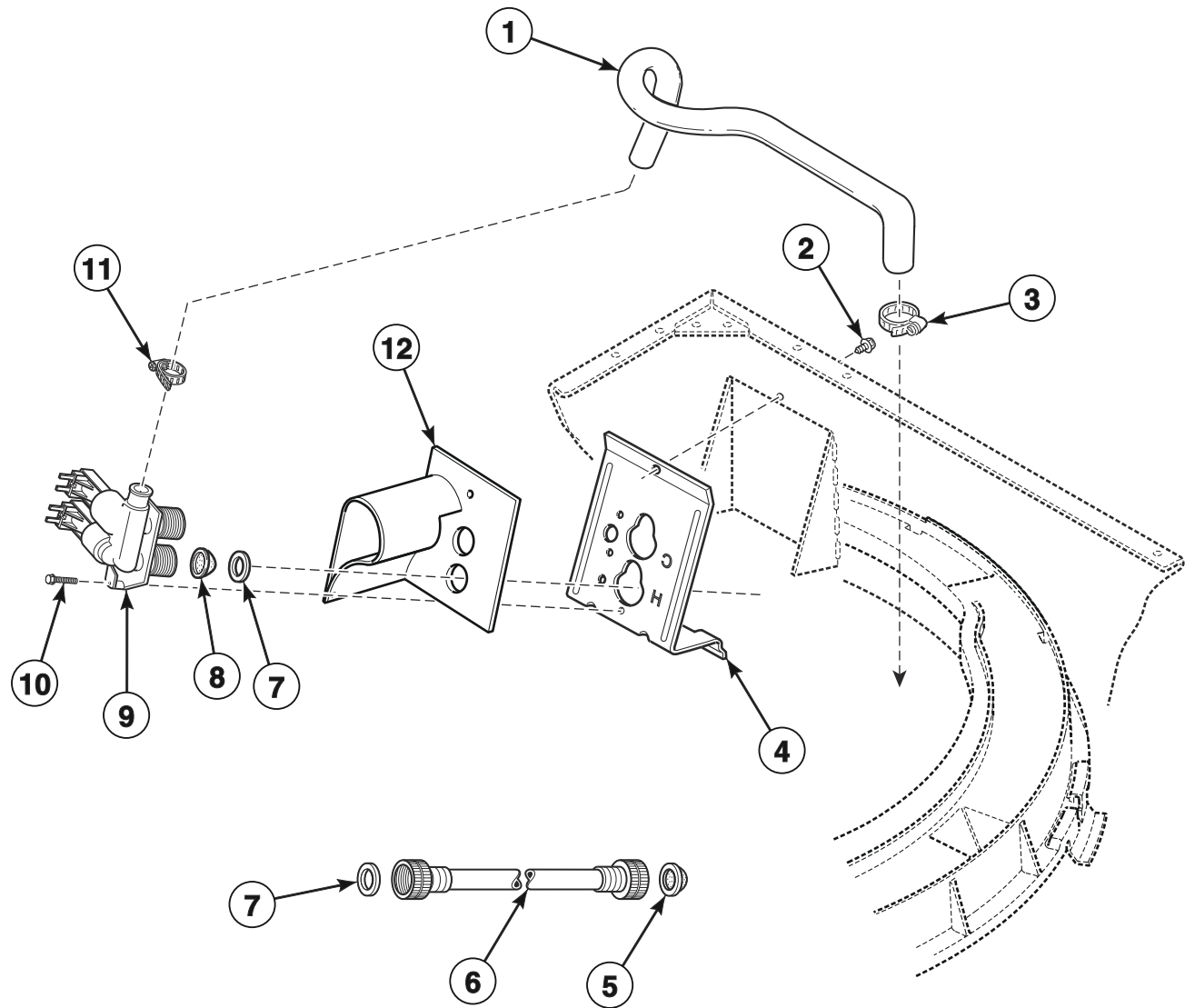
Models AWNE82SP113FW01, AWNE92SP113FW01, FWNE52SP303ZW01, FWNE52SP303ZW14, LWNE52PP113ZW01, LWNE52PP303SW01, LWNE52SP113FQ01, LWNE52SP113FW01, LWNE52SP113ZW01, LWNE52SP303AW01, LWNE52SP303BW01, LWNE52SP303EW01, LWNE52SP303NW26, LWNE52SP303SW01, LWNE52SP303UW01, LWNE52SP303ZW01, LWNE52SP543RW01, LWNE52SP543ZW01, LWNE52WP113FW01, LWNE52WP303ZW01, LWNE52WP543RW01, LWNE52WP543ZW01, YWNE52SP303EW01, YWNE52SP303UW01, YWNE52SP543RW01, YWNE52SP543ZW01, ZWNE82SP113FW01 and ZWNE92SP113FW01



TLW1809P\_203418

# LWN1 P7

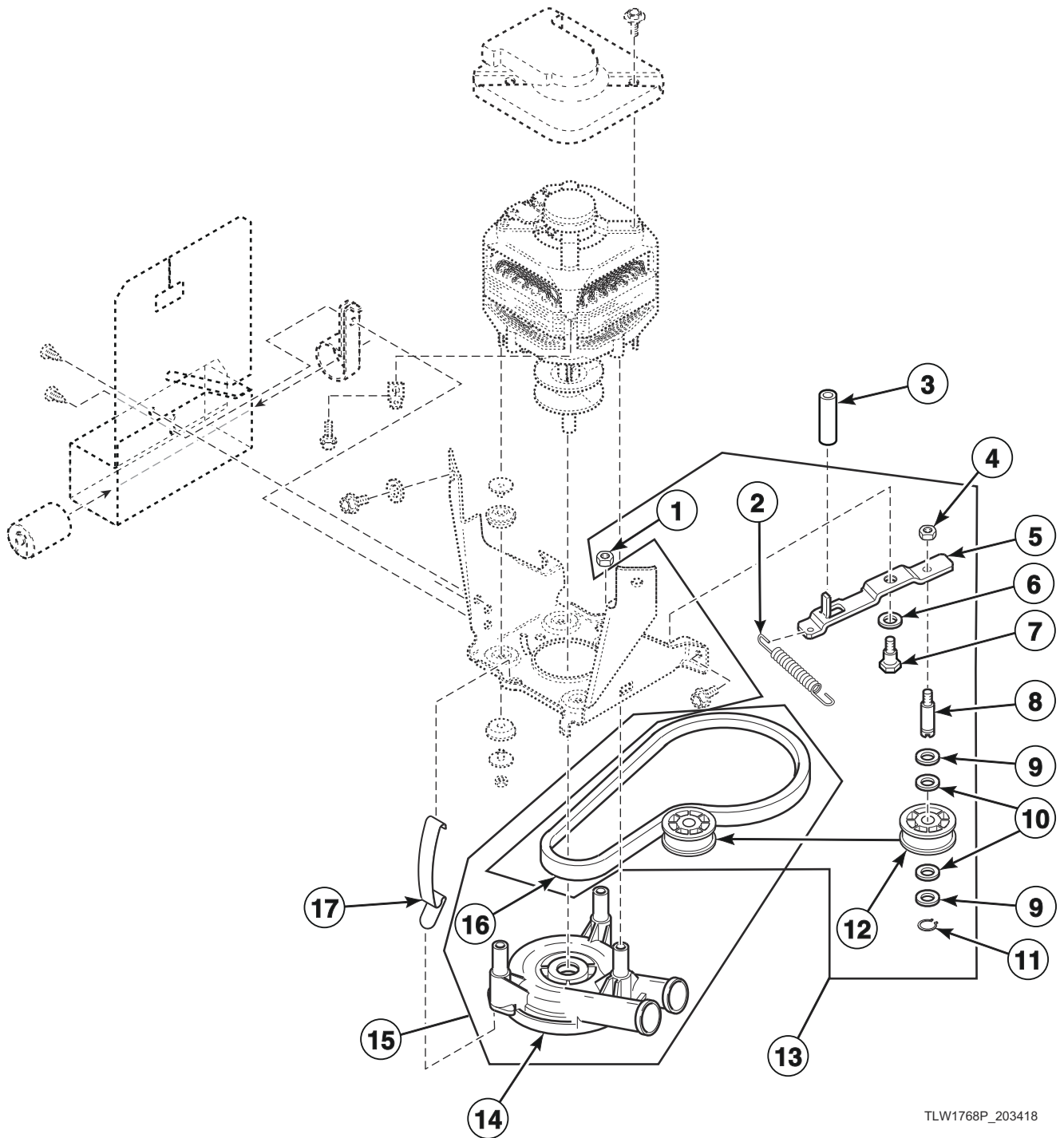
## Fill Hose, Mixing Valve-to-Tub Cover Hose, Mixing Valve and Bracket



TLW1798P\_203418

# LWN1 P8

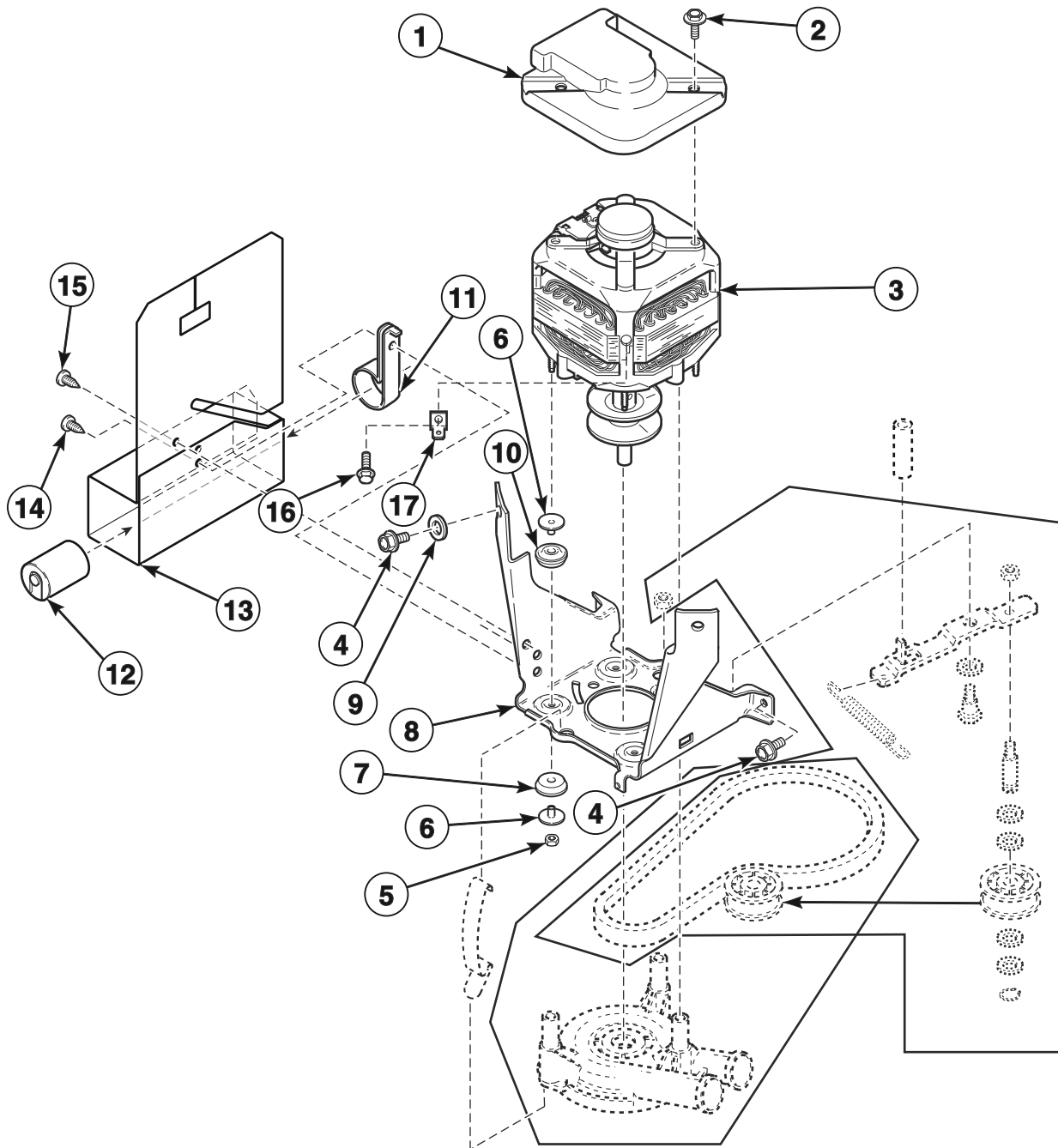
## Belt, Pump and Idler Assembly



TLW1768P\_203418

LWN1 P9

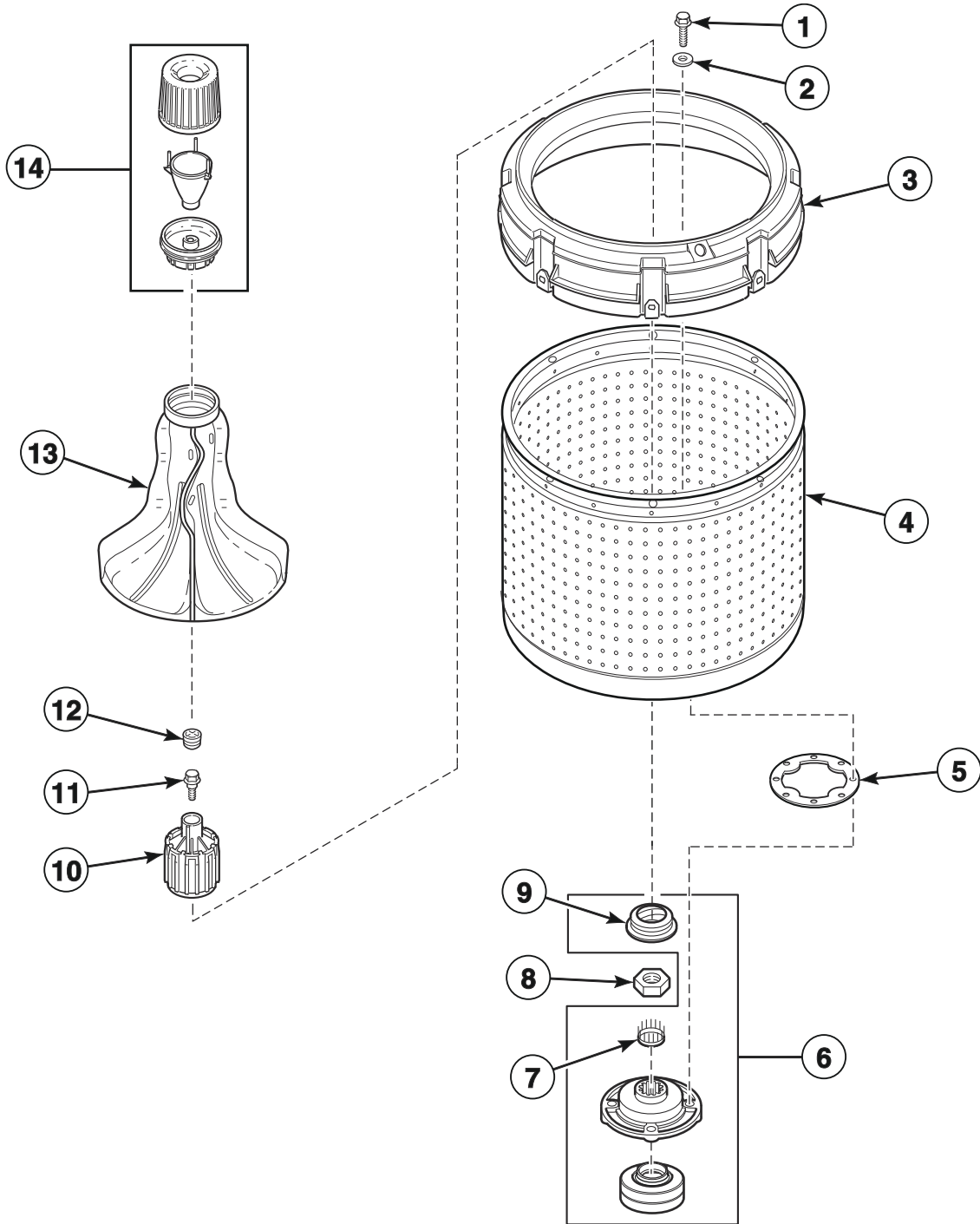
## Motor and Mounting Bracket



TLW1768PA\_203418

# LWN1 P10

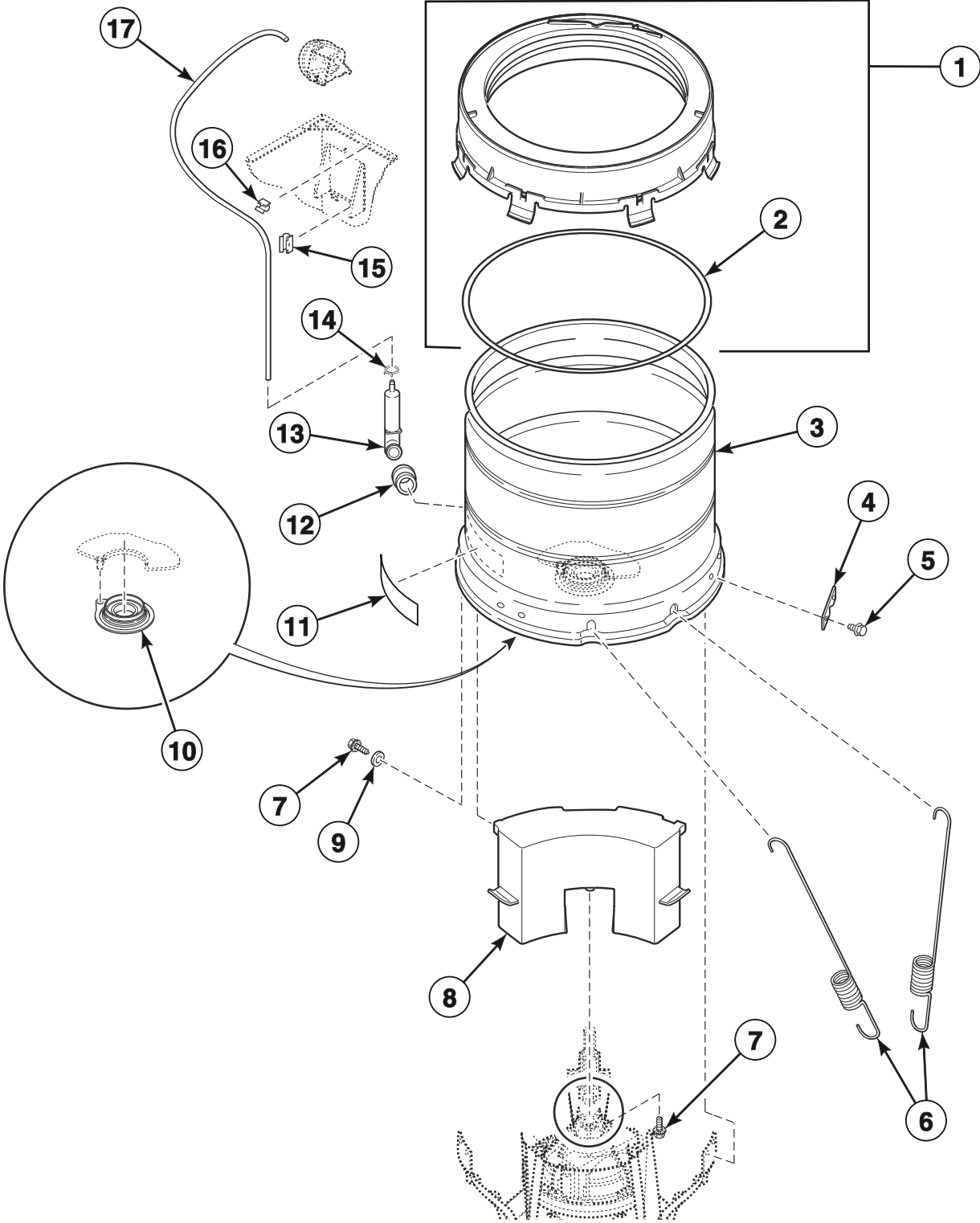
# Agitator, Fabric Softener Dispenser, Drive Bell, Hub and Lip Seal Kit and Washtub



TLW1805P\_203418

LWN1 P11

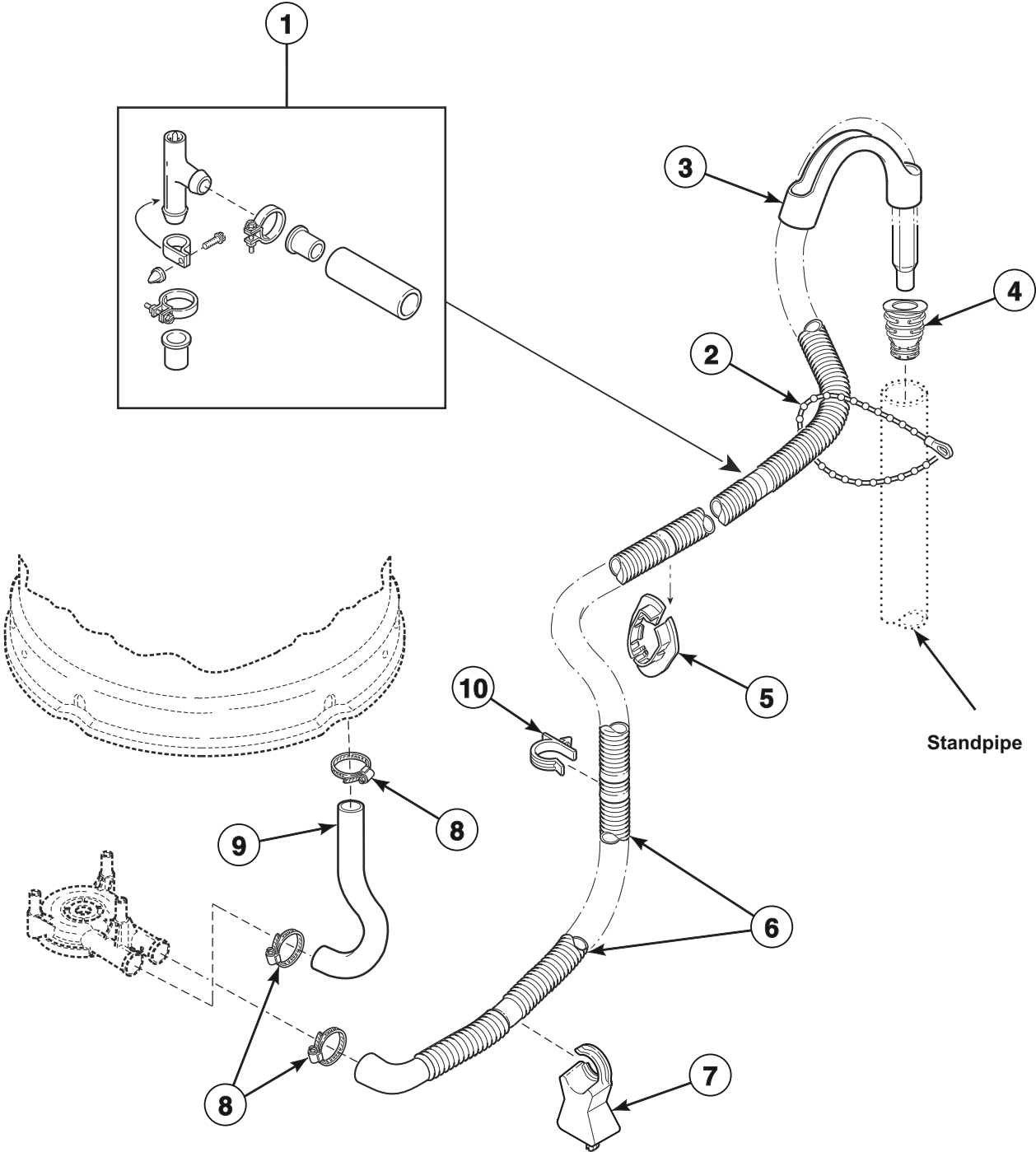
# Outer Tub, Cover, Bearing and Seal Housing, Pressure Hose and Counterweight



TLW1807P\_203418

LWN1 P12

# Drain Hose and Siphon Break Kit

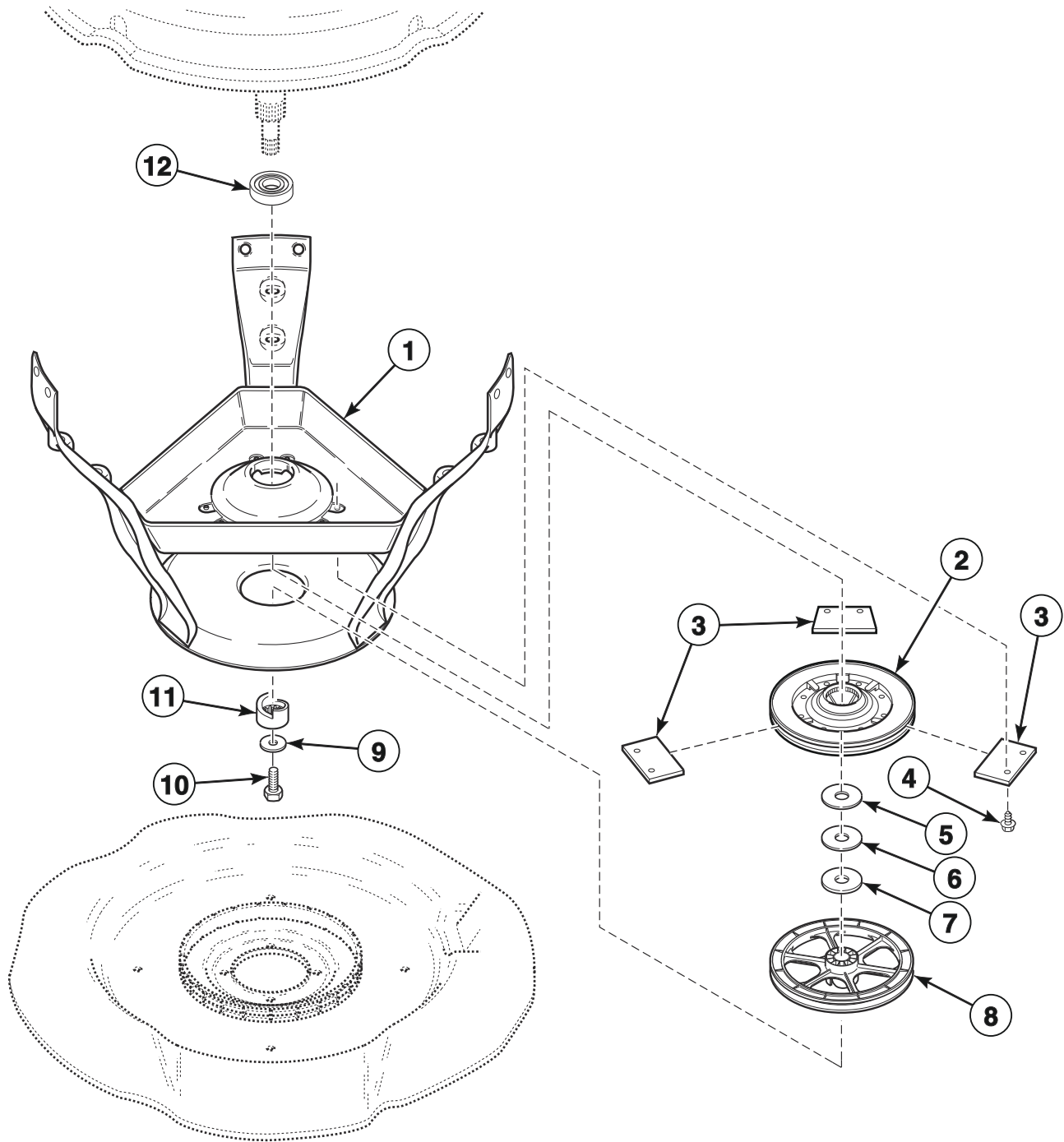


W329P\_203418

LWN1 P13



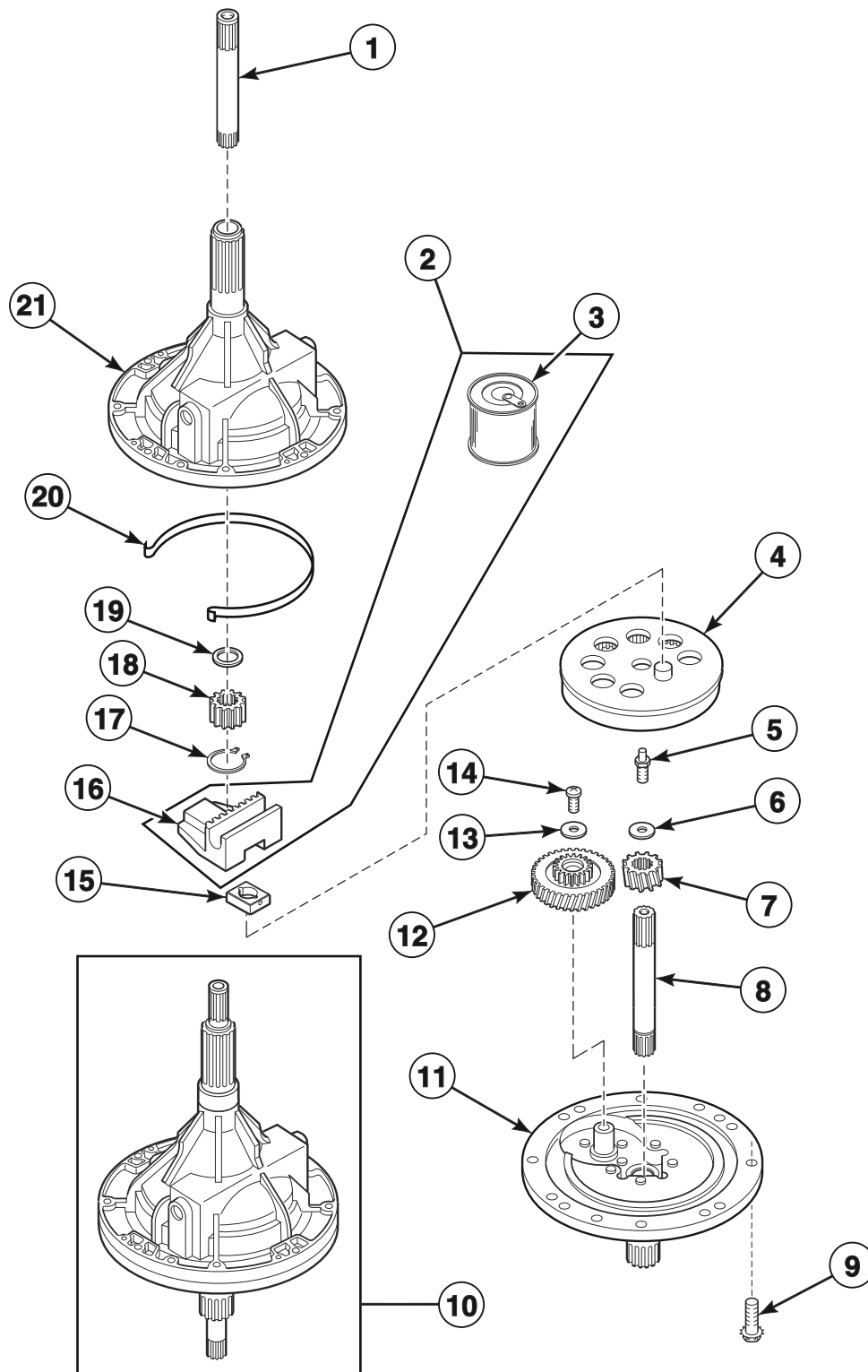
## Weldment and Bearing Assembly, Brake and Pulley



TLW1841P\_203418

LWN1 P14

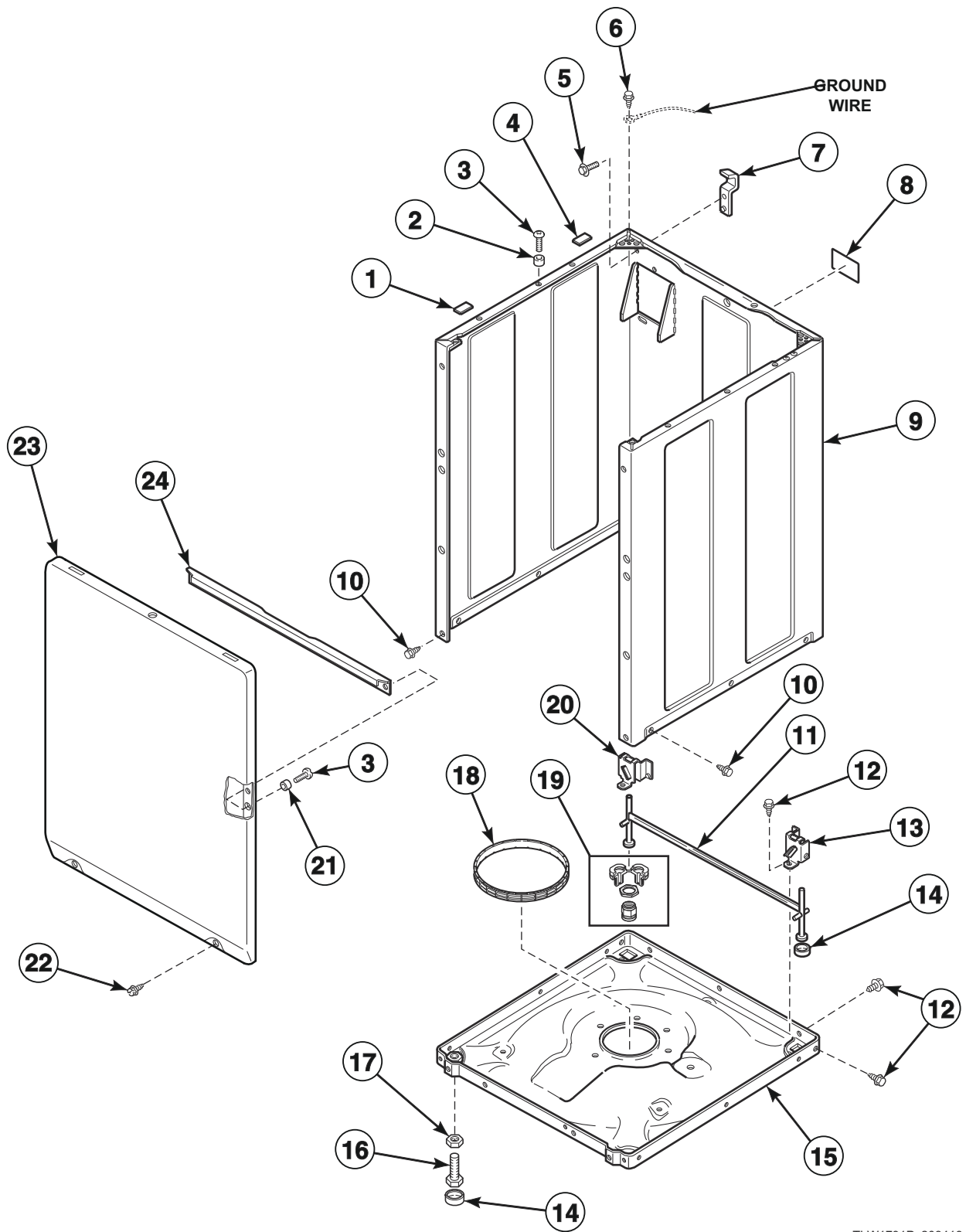
# Transmission Assembly



TLW1790P\_203418

# LWN1 P15

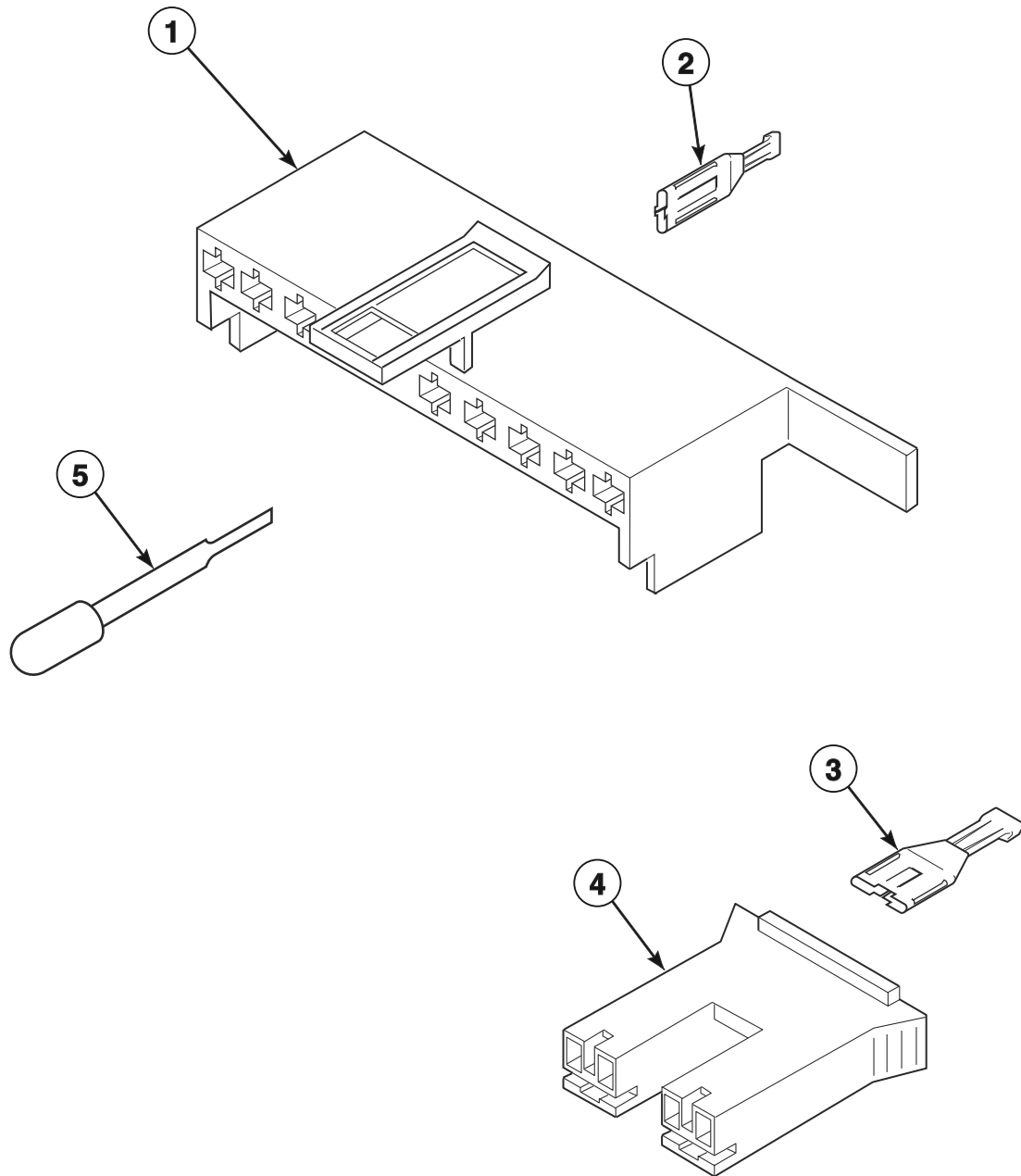
# Front Panel, Base Assembly and Cabinet Kit



TLW1791P\_203418

# LWN1 P16

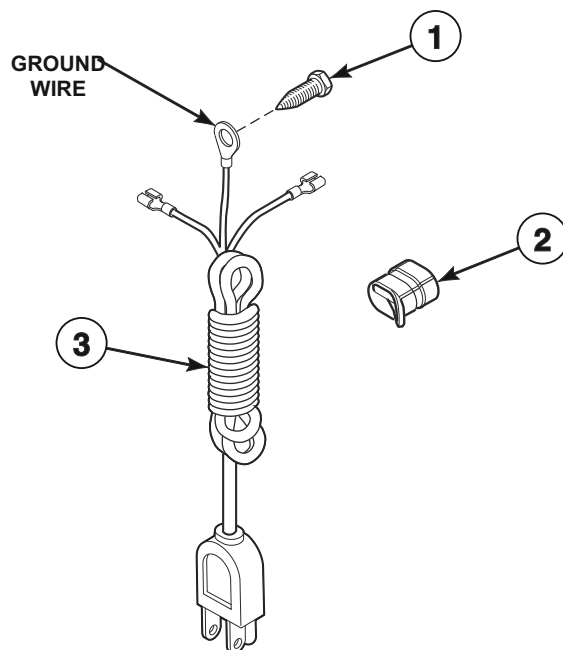
## Mixing Valve and Motor Connection Blocks, Terminals and Extractor Tool



W134PZ3A\_203418

**LWN1 P17**

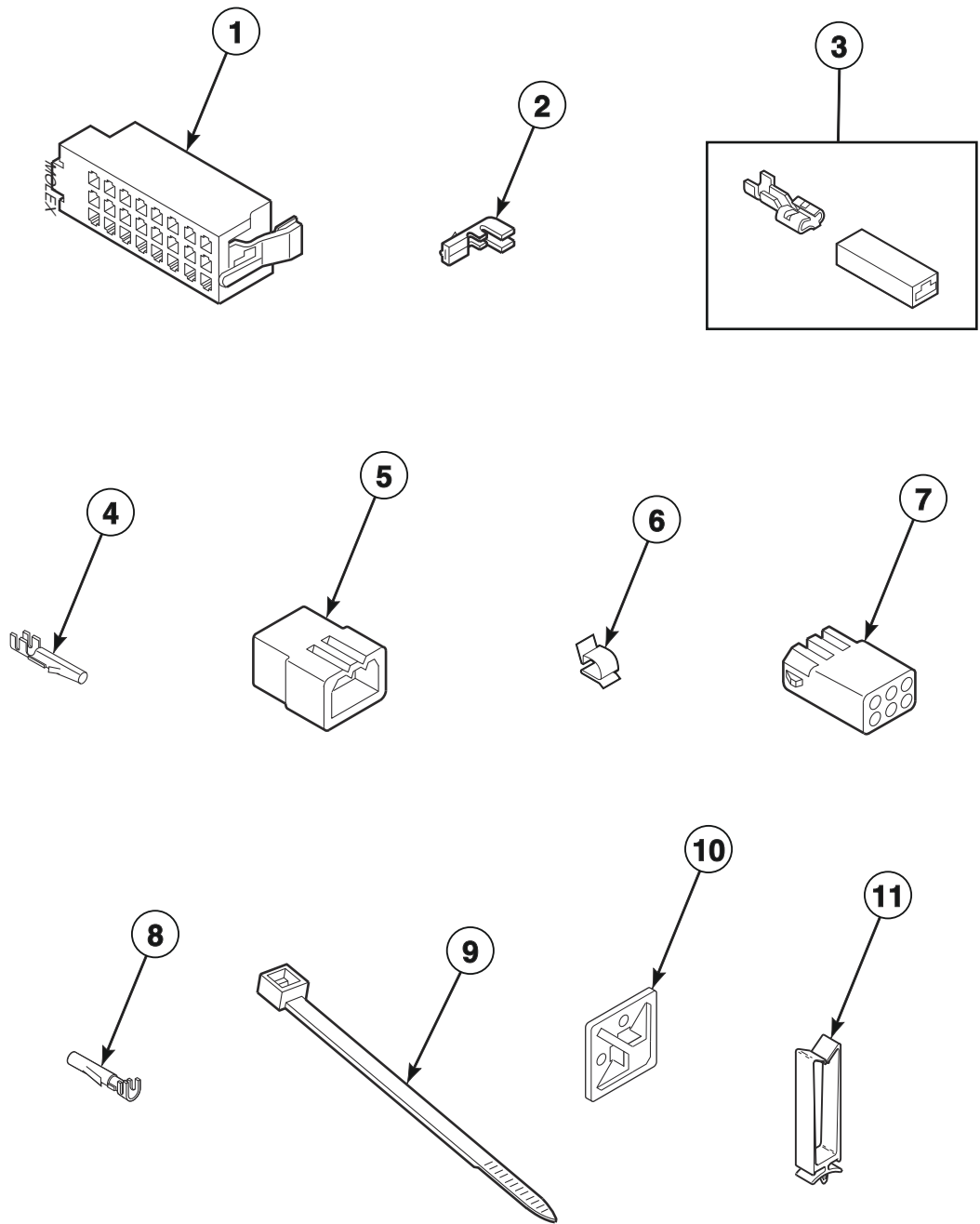
## Power Cord



TLW1526P\_203418

**LWN1 P18**

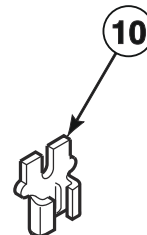
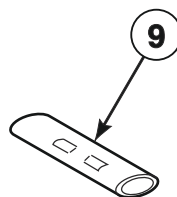
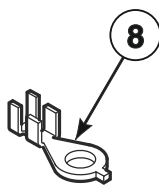
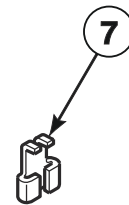
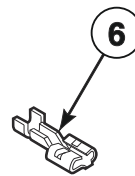
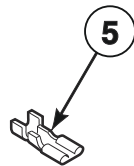
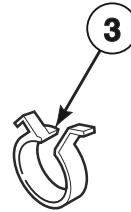
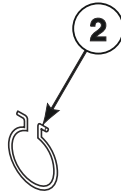
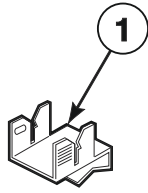
# Terminals and Clips



TLW1792P\_203418

LWN1 P19

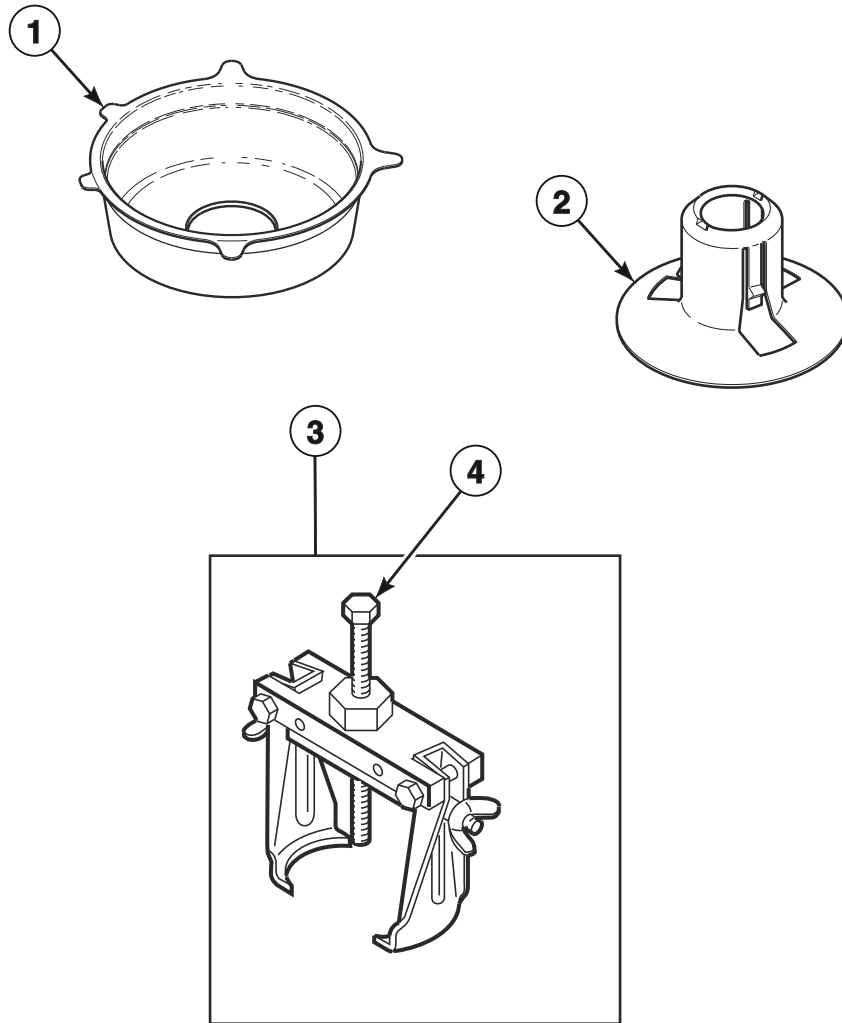
# Terminals



TLW1796P\_203418

# LWN1 P20

## Shipping Materials and Special Tools

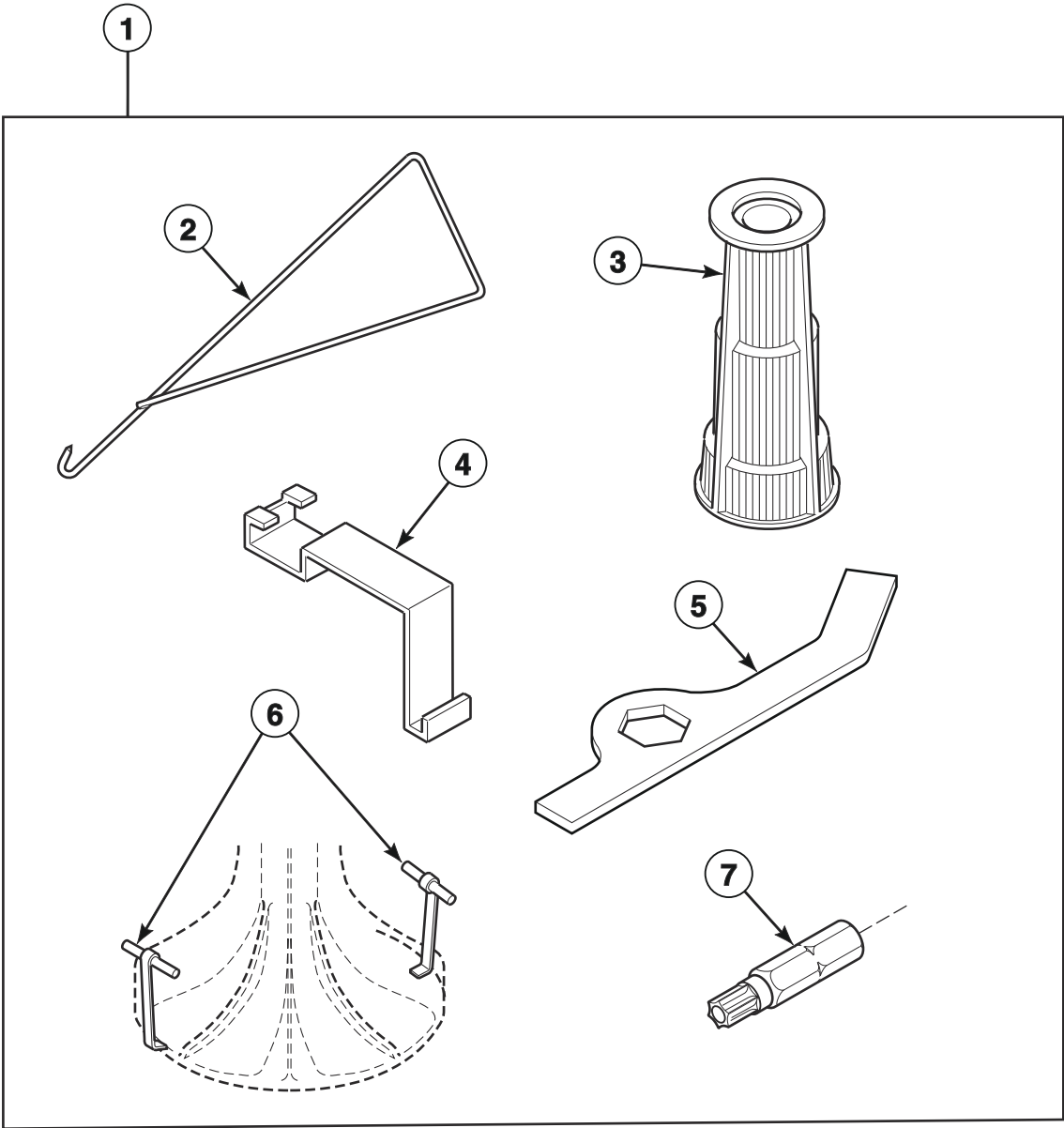


TLW1678P\_203418

# LWN1 P21



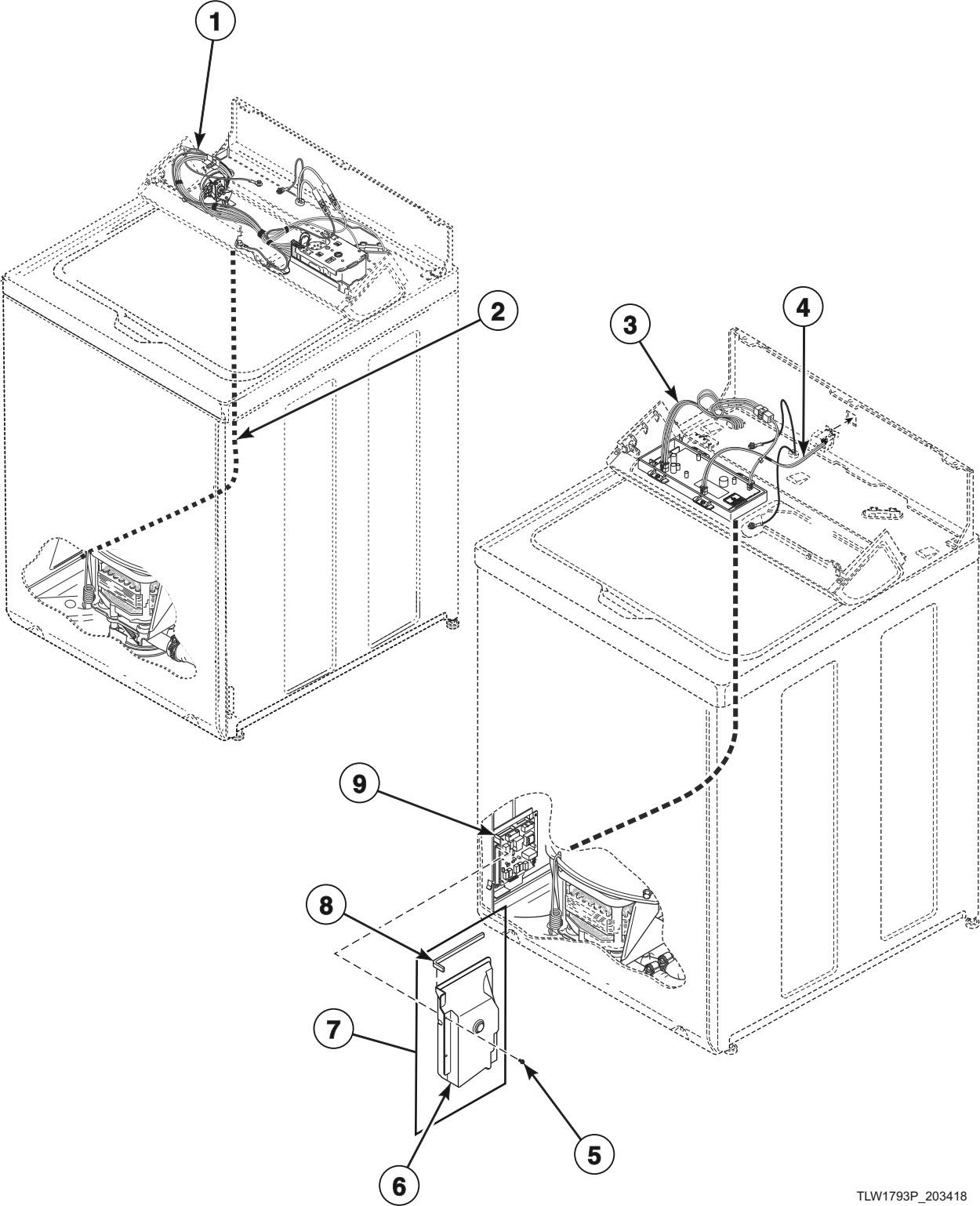
# Special Tools



TLW1794P\_203418

LWN1 P22

# Output Board, Wire Harnesses and Wires



TLW1793P\_203418

LWN1 P23