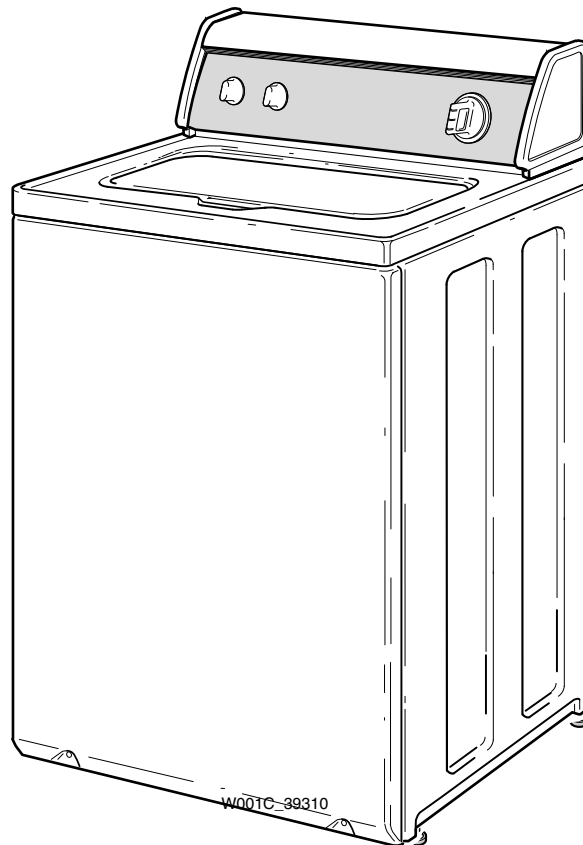


Homestyle Automatic Washers LWS 1

Refer to Page 3 for Model Numbers



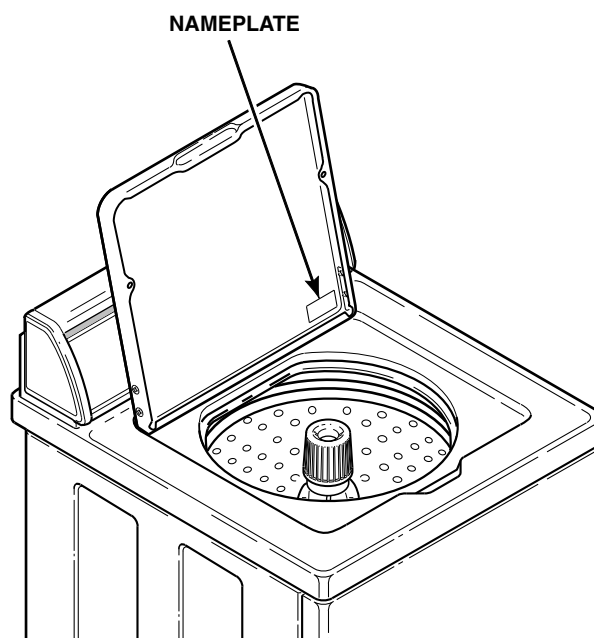
Parts

Parts Ordering Information

If literature or replacement parts are required, contact the source from whom the machine was purchased or contact Alliance Laundry Systems at for the name and address of the nearest authorized parts distributor.

Nameplate Location

When calling or writing about your product, be sure to mention model and serial numbers. Model and serial numbers are located on nameplate(s) as shown.



W429S_39310

Model Identification

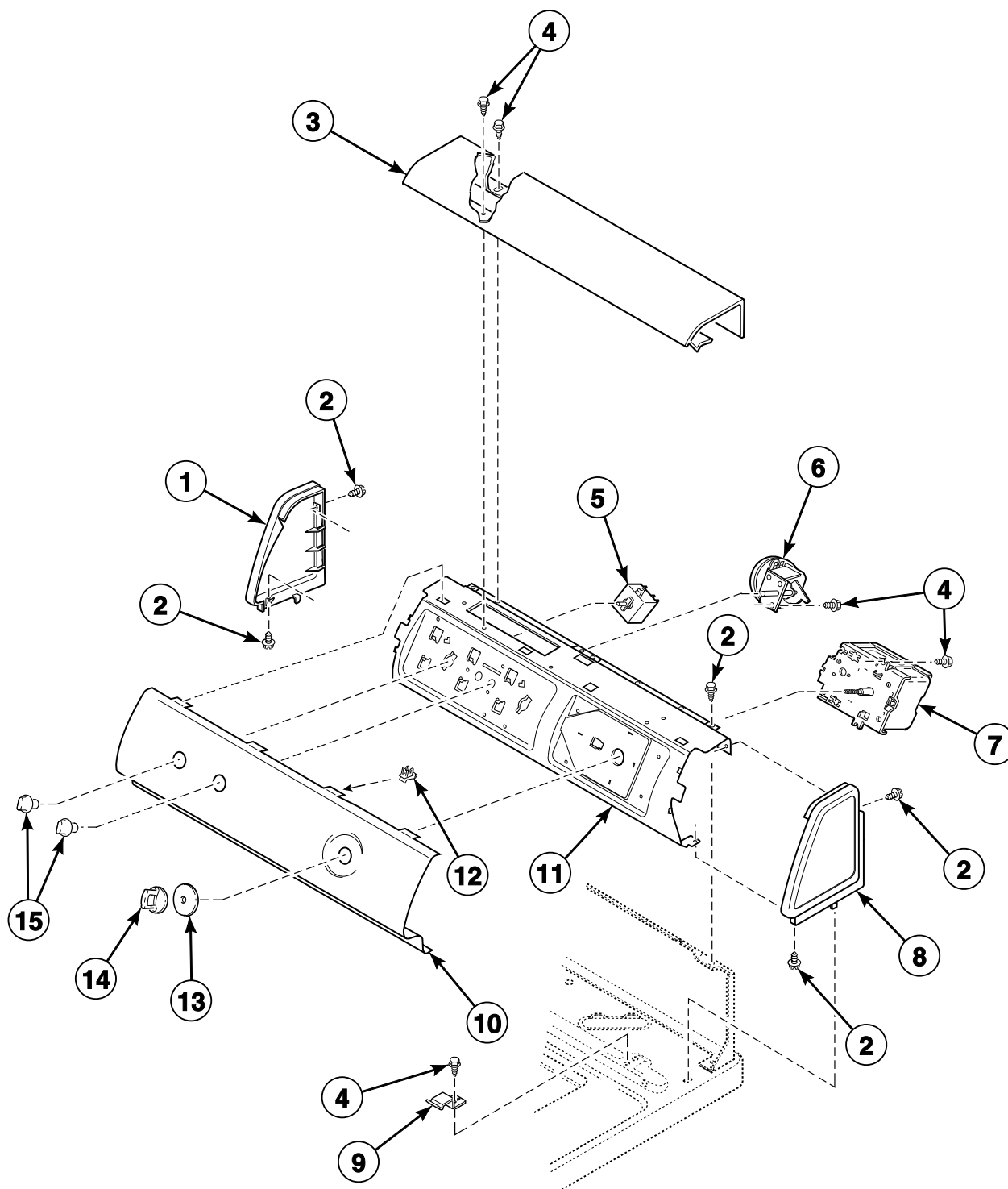
Information in this manual is applicable to these washer models:

LWNA11SP111TW01	LWS04M*	LWS17M*
LWNB11SP111TW01	LWS04N*	LWS17N*
LWNB11SP111TWAA	LWS05N*	LWS44N*
LWN311PP111TW01	LWS16A*	LWS45A*
LWN311SP111TW01	LWS16B*	LWS45B*
LWN311WP111TW01	LWS16M*	LWS45M*
LWN412SP111TW01	LWS16N*	LWS45N*
LWS01A*	LWS17A*	LWS49N*
LWS01A*C	LWS17B*	
LWS01B*		
LWS01M*		
LWS01N*		
LWS02A*		
LWS02B*		
LWS02M*		
LWS02N*		

* Add Letter To Designate Color. L - Almond Q - Bisque W - White

Graphic Panel, Control Support Panel and Controls (Drawing 1 of 2)

All Models Except LWNA11SP111TW01, LWNB11SP111TW01, LWNB11SP111TWAA, LWS05N* and LWS49N*

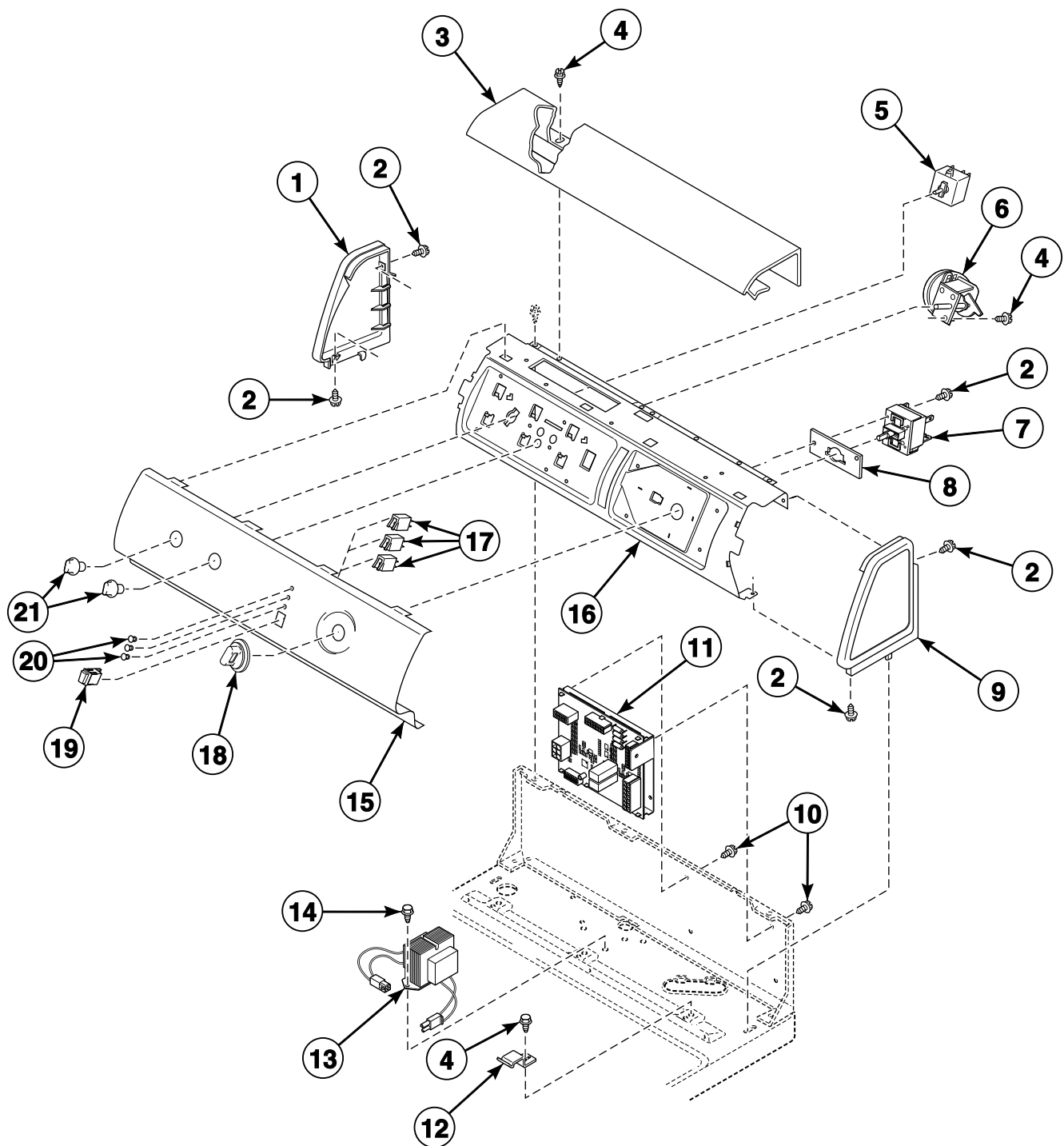


W320P_39310

LWS 1 P1

Graphic Panel, Control Support Panel and Controls (Drawing 2 of 2)

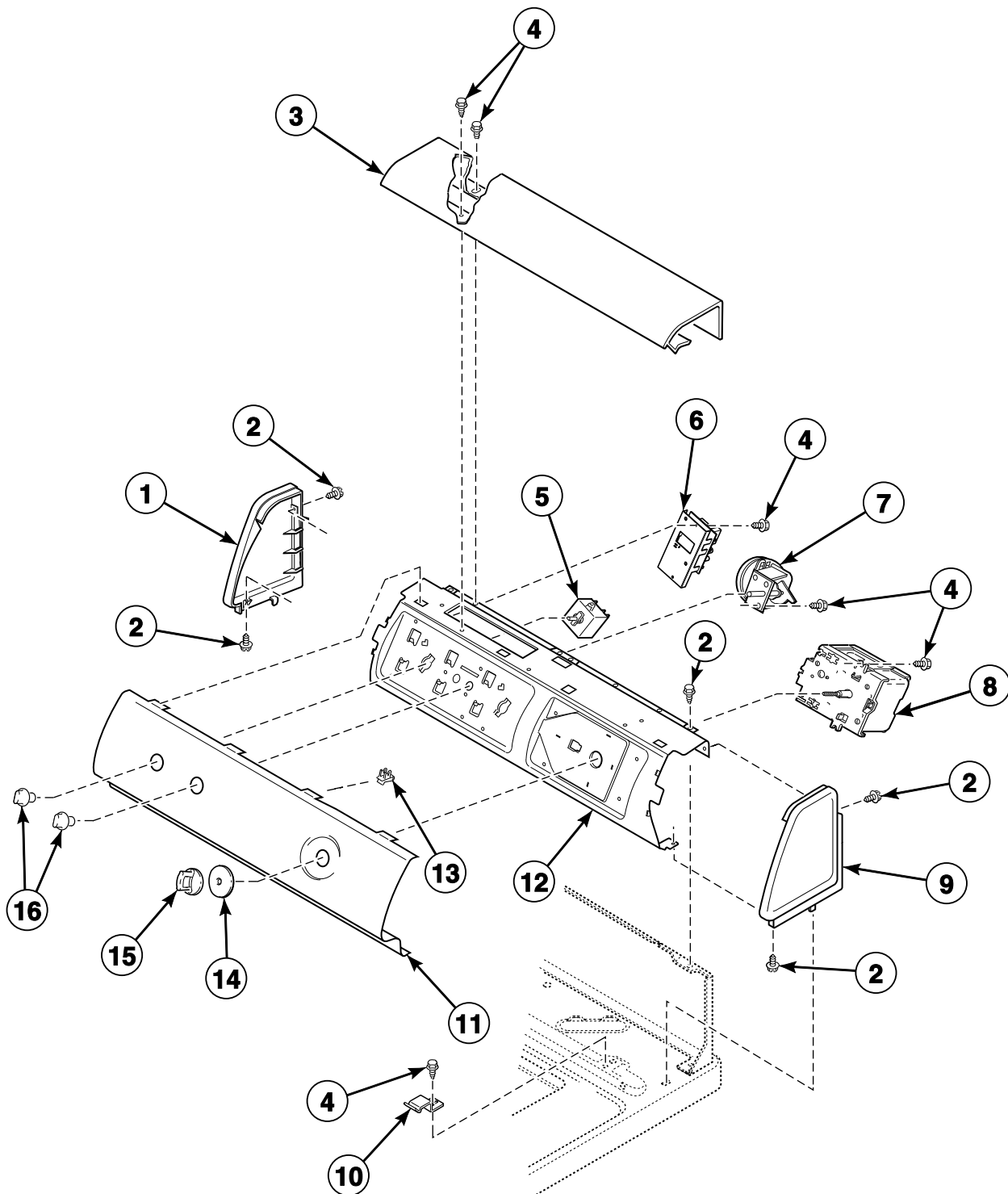
Model LWNA11SP111TW01



TLW1674P_39310

Graphic Panel, Control Support Panel and Temperature Control

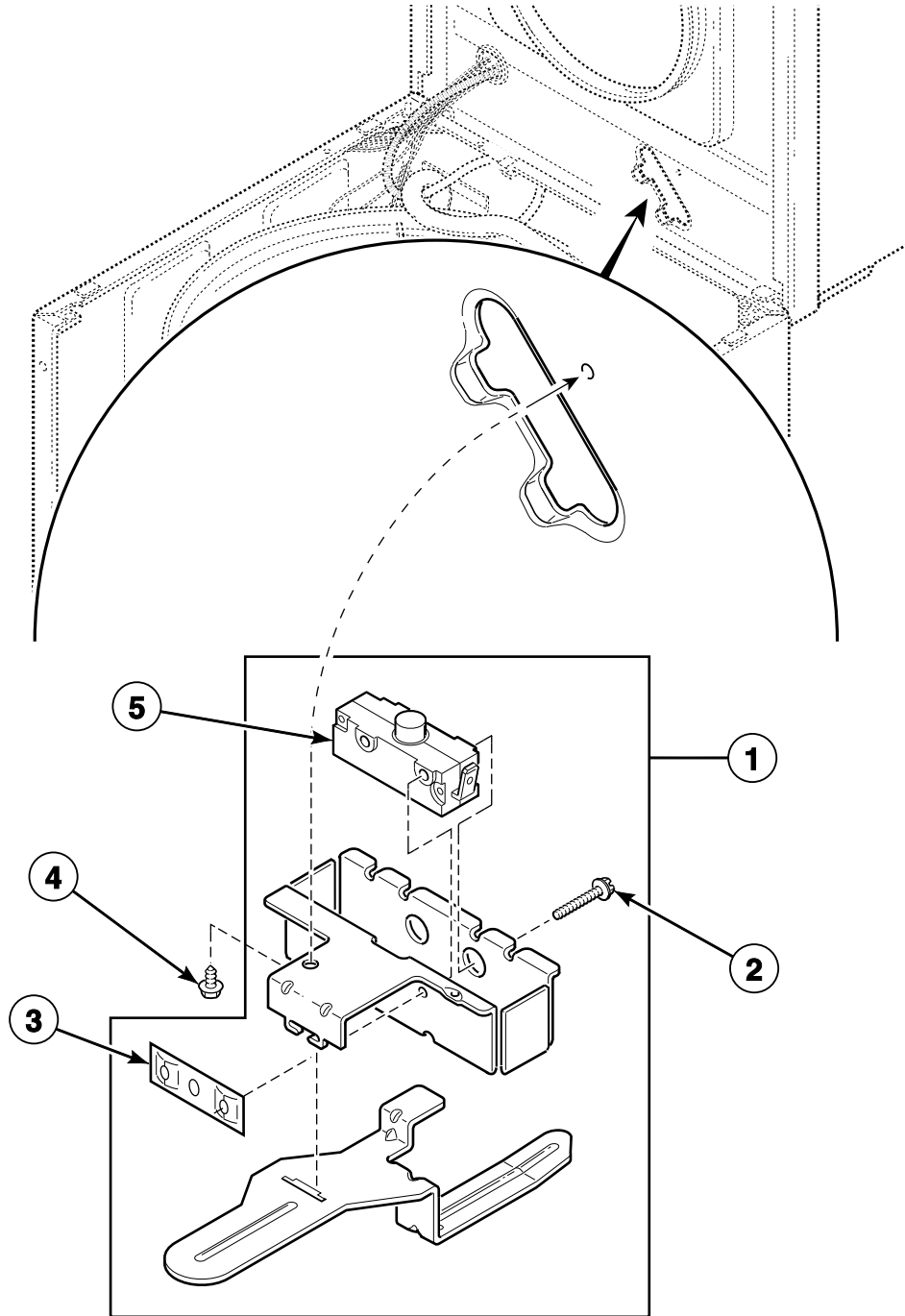
Models LWNB11SP111TW01, LWNB11SP111TWAA, LWS05N* and LWS49N*



TLW1503P_39310

LWS 1 P3

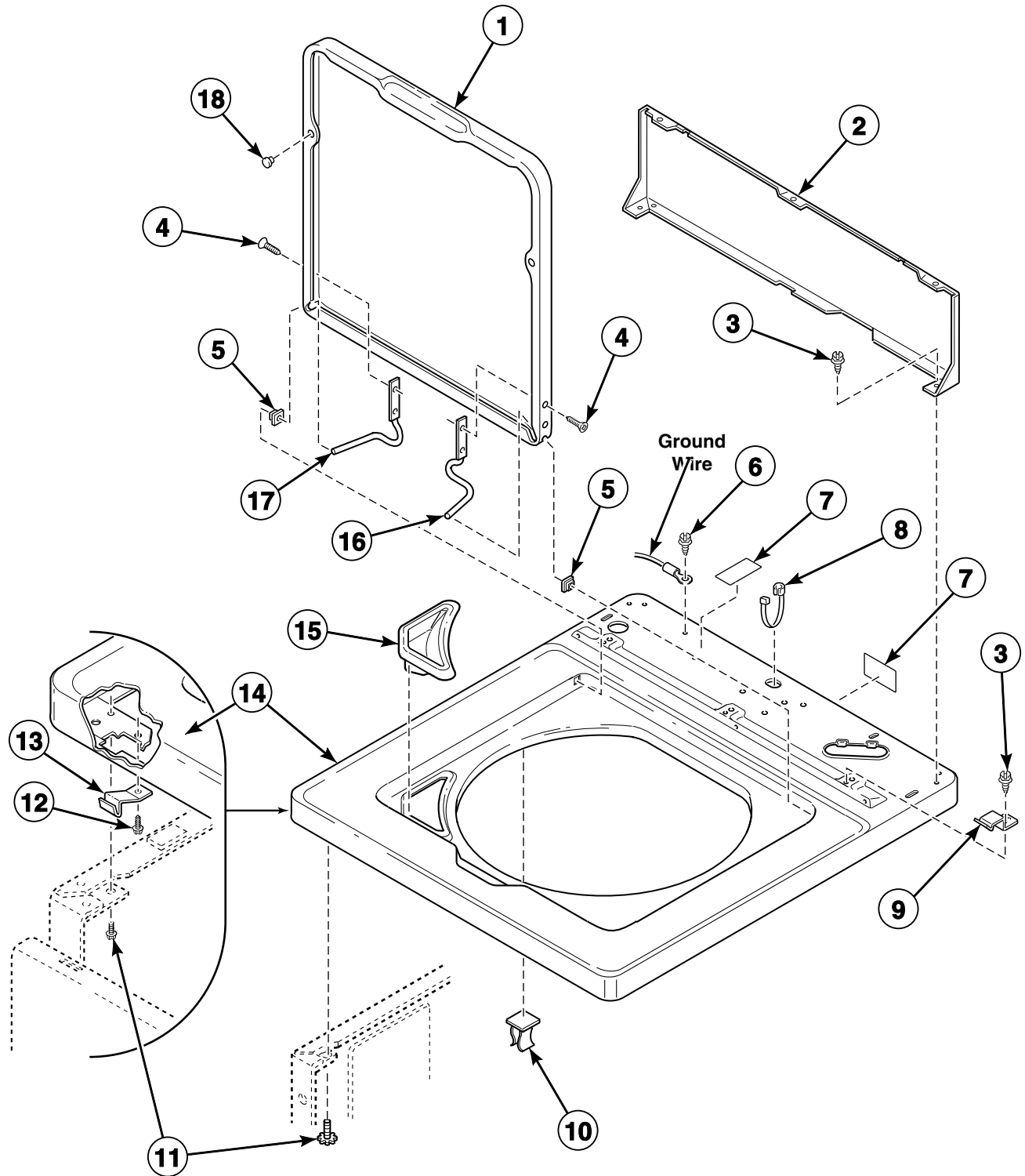
Lid Switch Assembly



TLW1832B_39310

LWS 1 P4

Top, Lid and Hood Back Panel

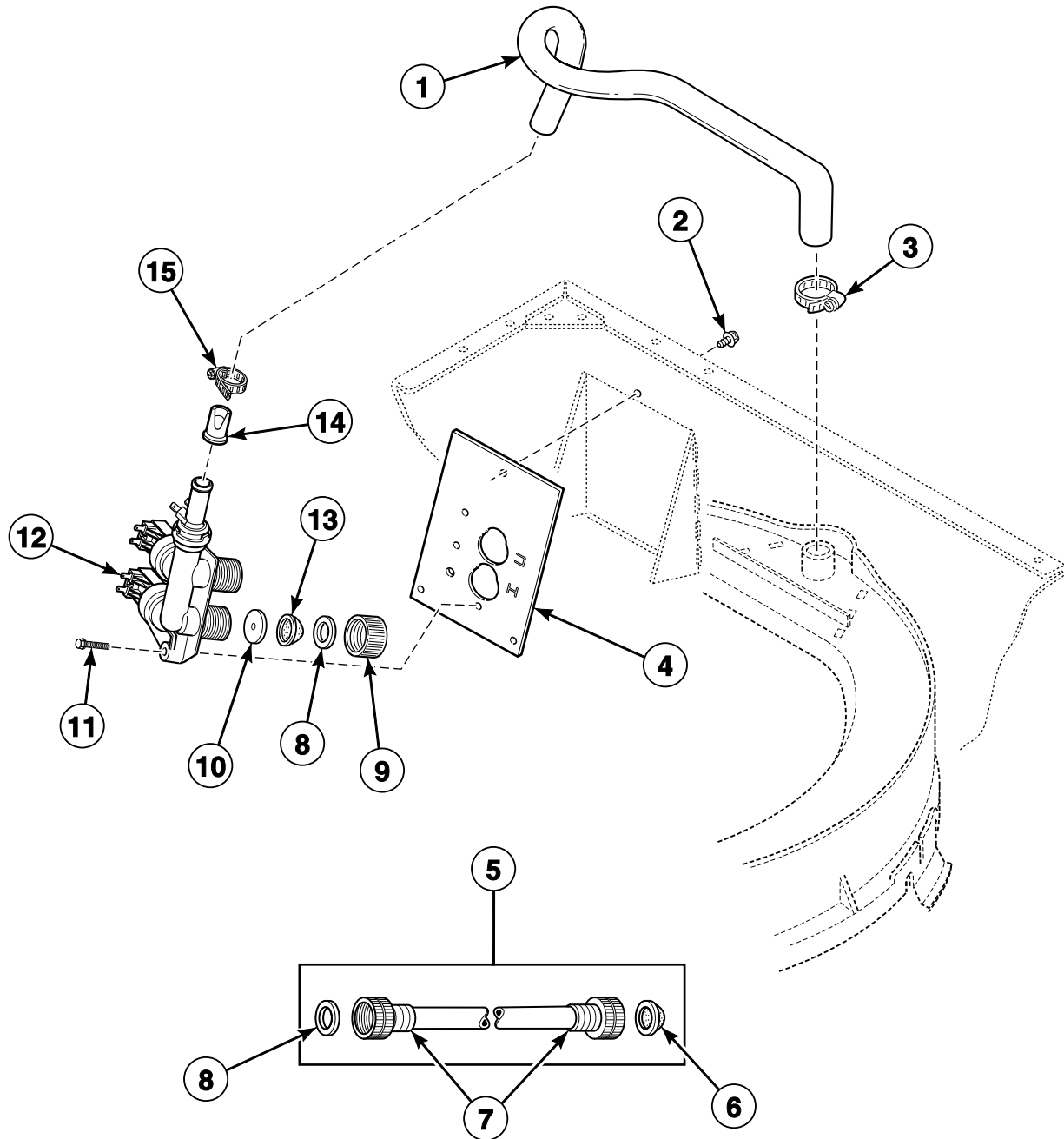


TLW1477P_39310

LWS 1 P5

Fill Hose, Mixing Valve-to-Tub Cover Hose, Mixing Valve and Bracket (Drawing 1 of 2)

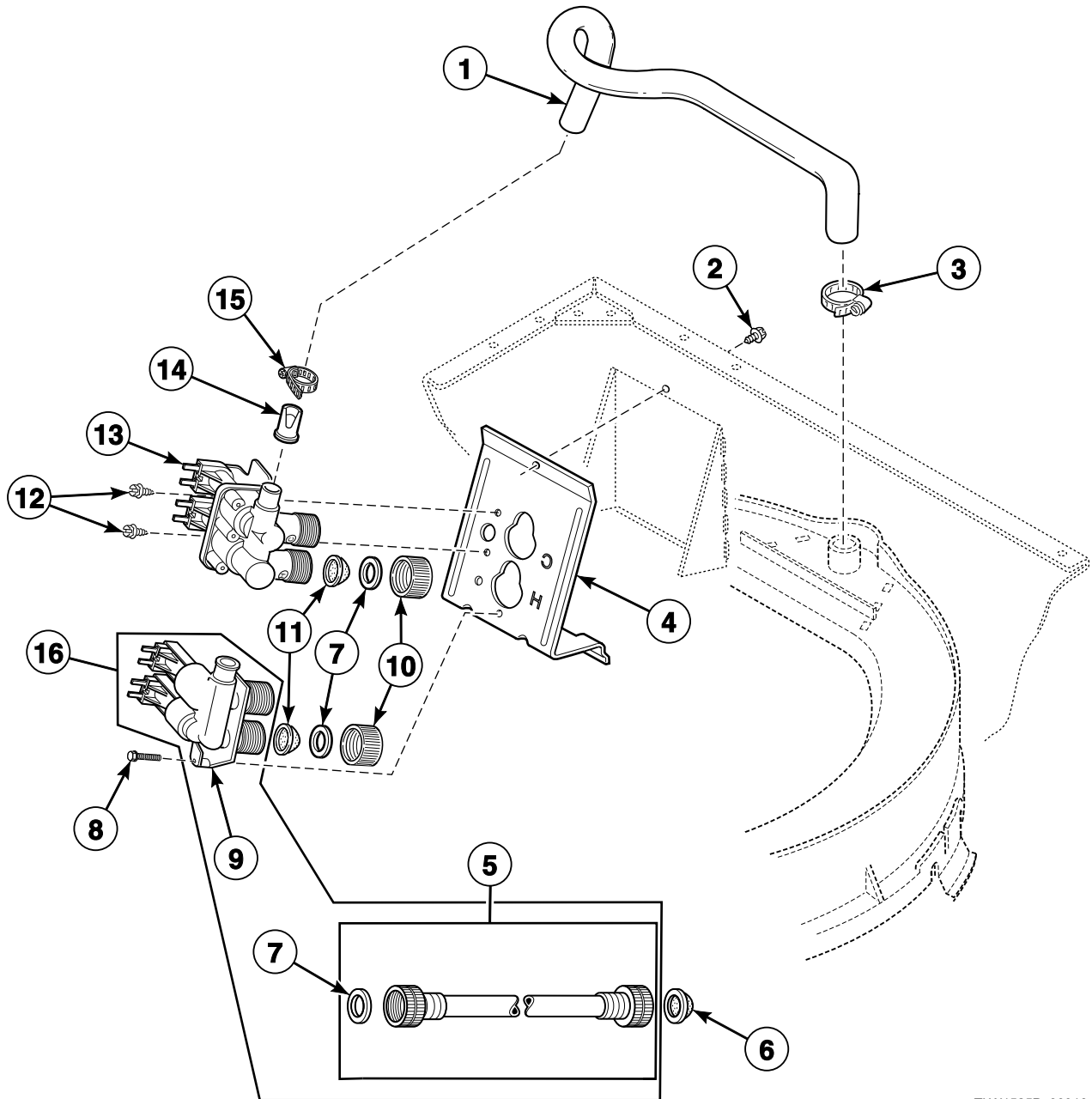
Models LWNB11SP111TW01, LWNB11SP111TWAA, LWS05N* and LWS49N*



TLW1658P_39310

Fill Hose, Mixing Valve-to-Tub Cover Hose, Mixing Valve and Bracket (Drawing 2 of 2)

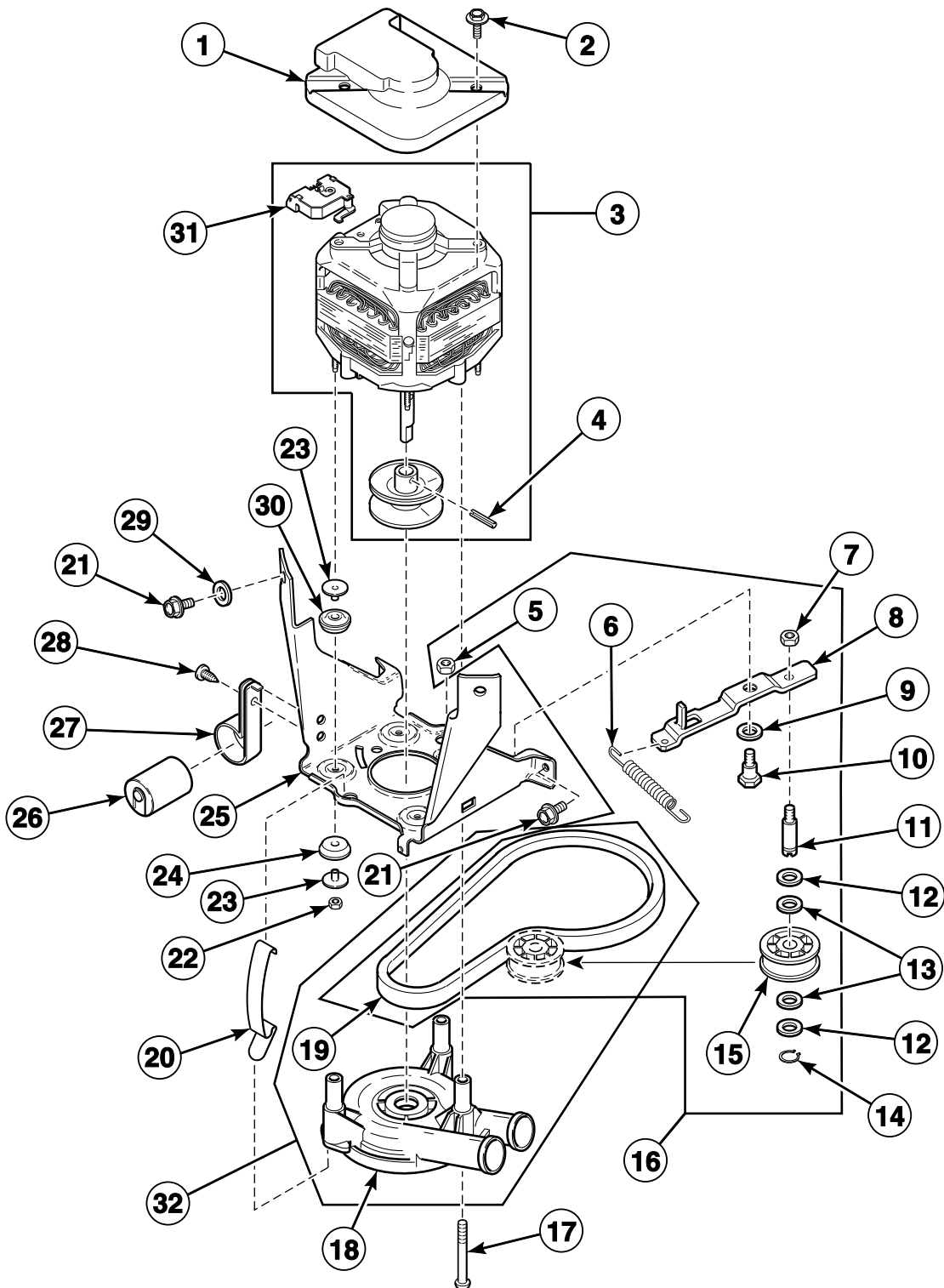
All Models Except LWNB11SP111TW01, LWNB11SP111TWAA, LWS05N* and LWS49N*



TLW1525P_39310

LWS 1 P7

Motor, Mounting Bracket, Belt, Pump and Idler Assembly

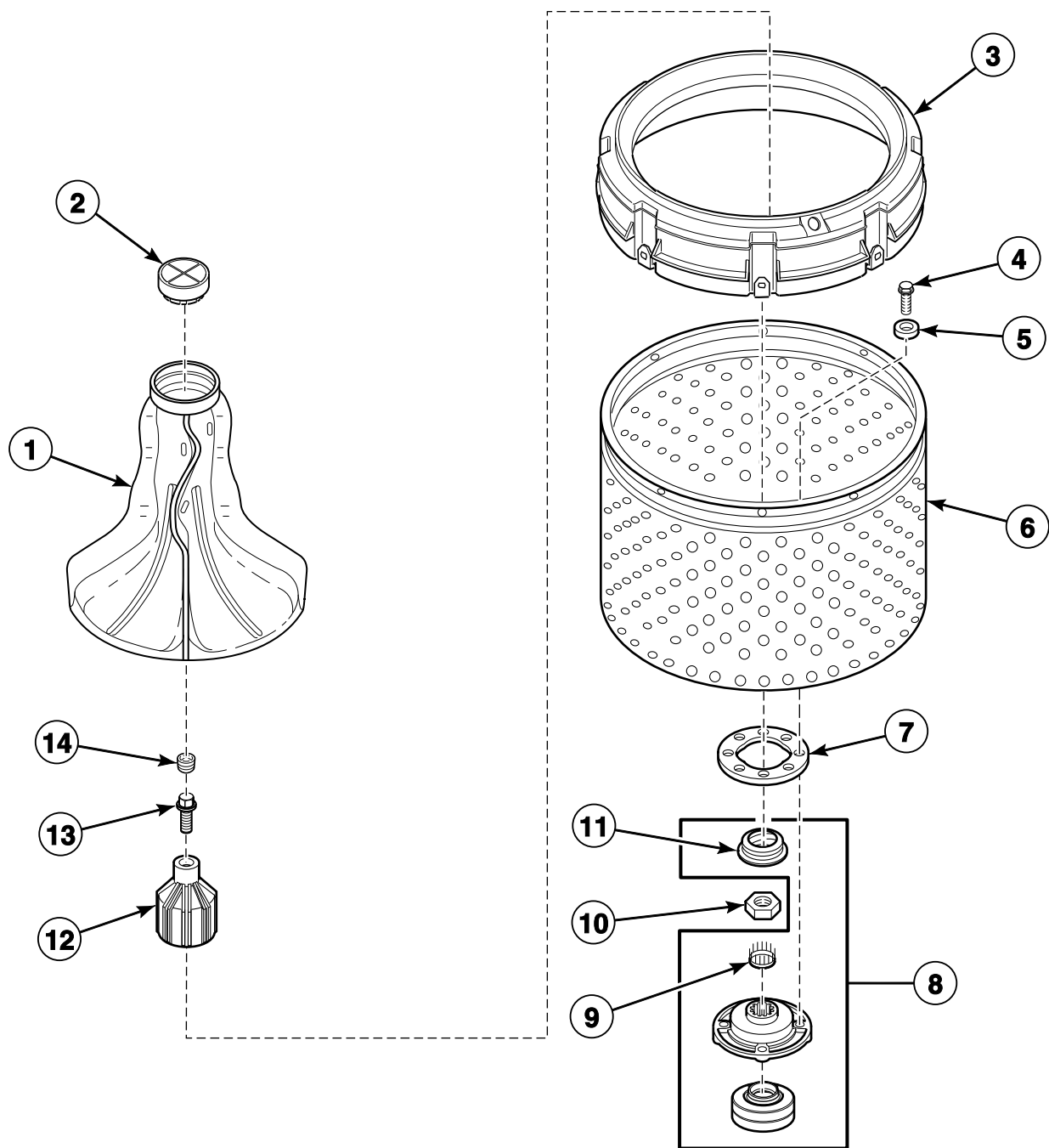


TLW1479P_39310

LWS 1 P8

Agitator, Drive Bell, Hub and Lip Seal Kit and Washtub

Models LWNA11SP111TW01, LWNB11SP111TW01, LWNB11SP111TWAA, LWN311PP111TW01,
LWS01N*, LWS02N*, LWS04N* and LWS05N*

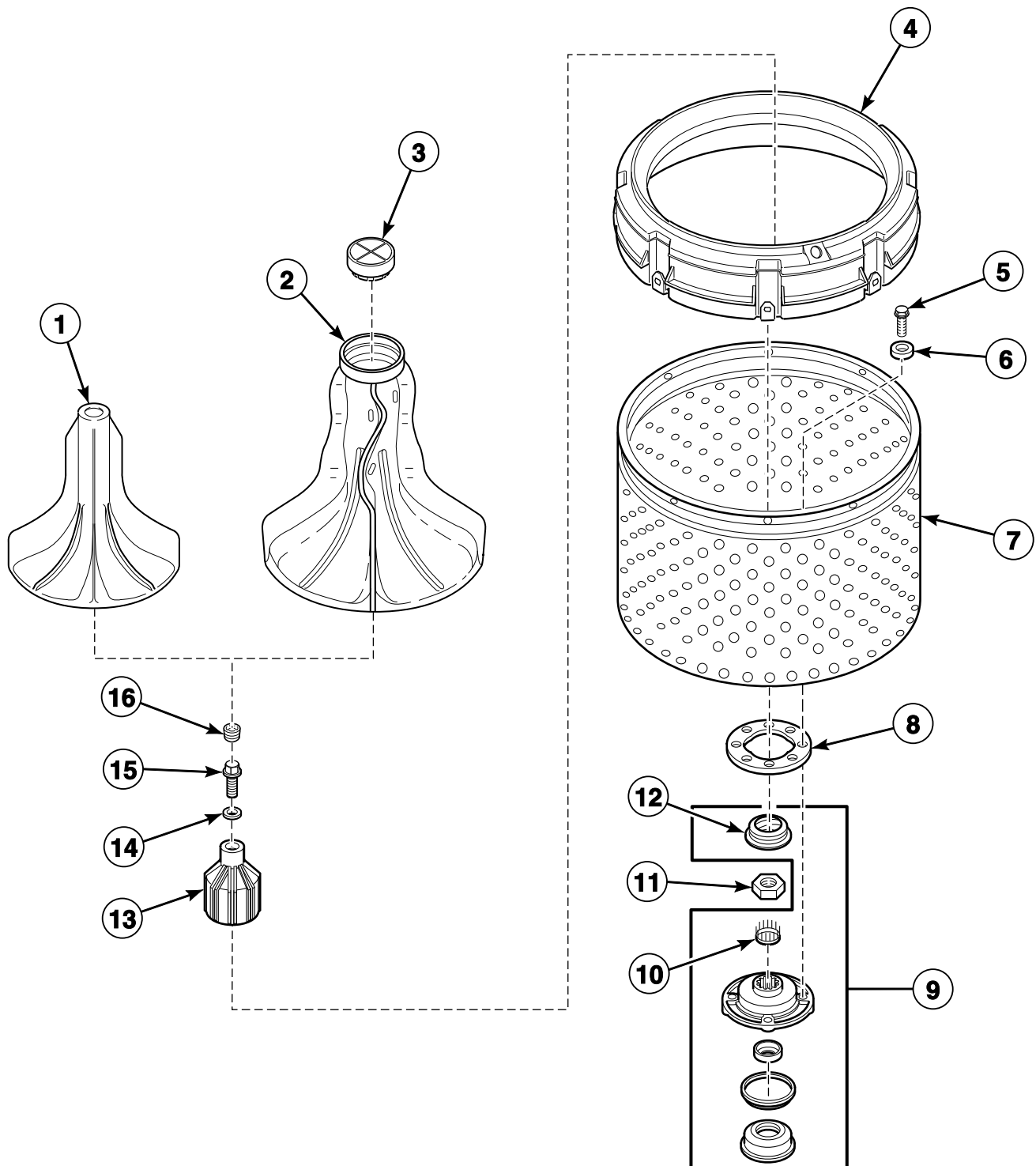


TLW1483P_39310

LWS 1 P9

Agitator, Drive Bell, Hub and Seal Kit and Washtub

Models LWS01A*, LWS01A*C, LWS01B*, LWS01M*, LWS02A*, LWS02B*, LWS02M* and LWS04M*

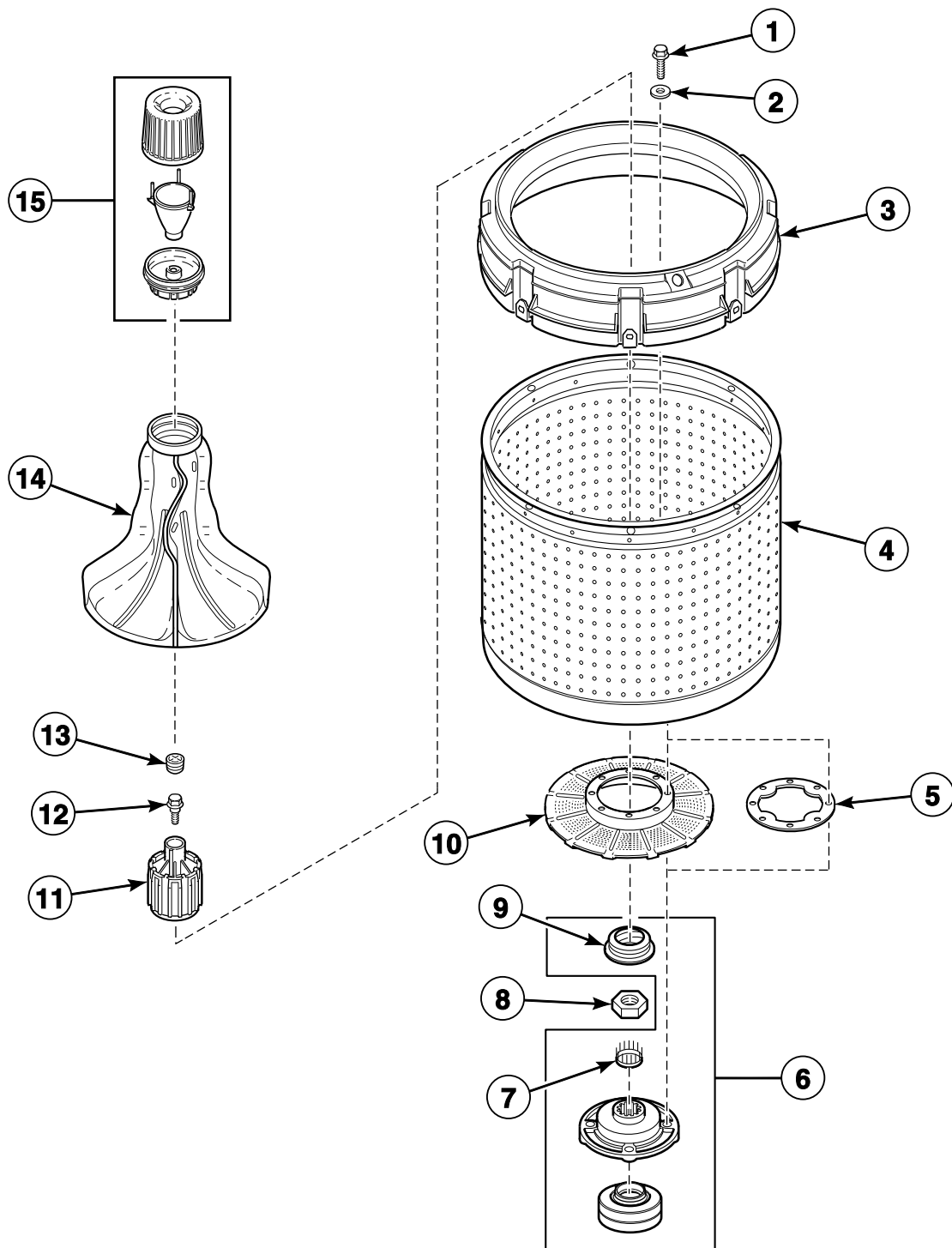


TLW999P_39310

LWS 1 P10

Agitator, Fabric Softener Dispenser, Drive Bell, Hub and Lip Seal Kit and Washtub

Models LWN311SP111TW01, LWN311WP111TW01, LWN412SP111TW01, LWS16N*, LWS17N*, LWS44N*, LWS45N* and LWS49N*

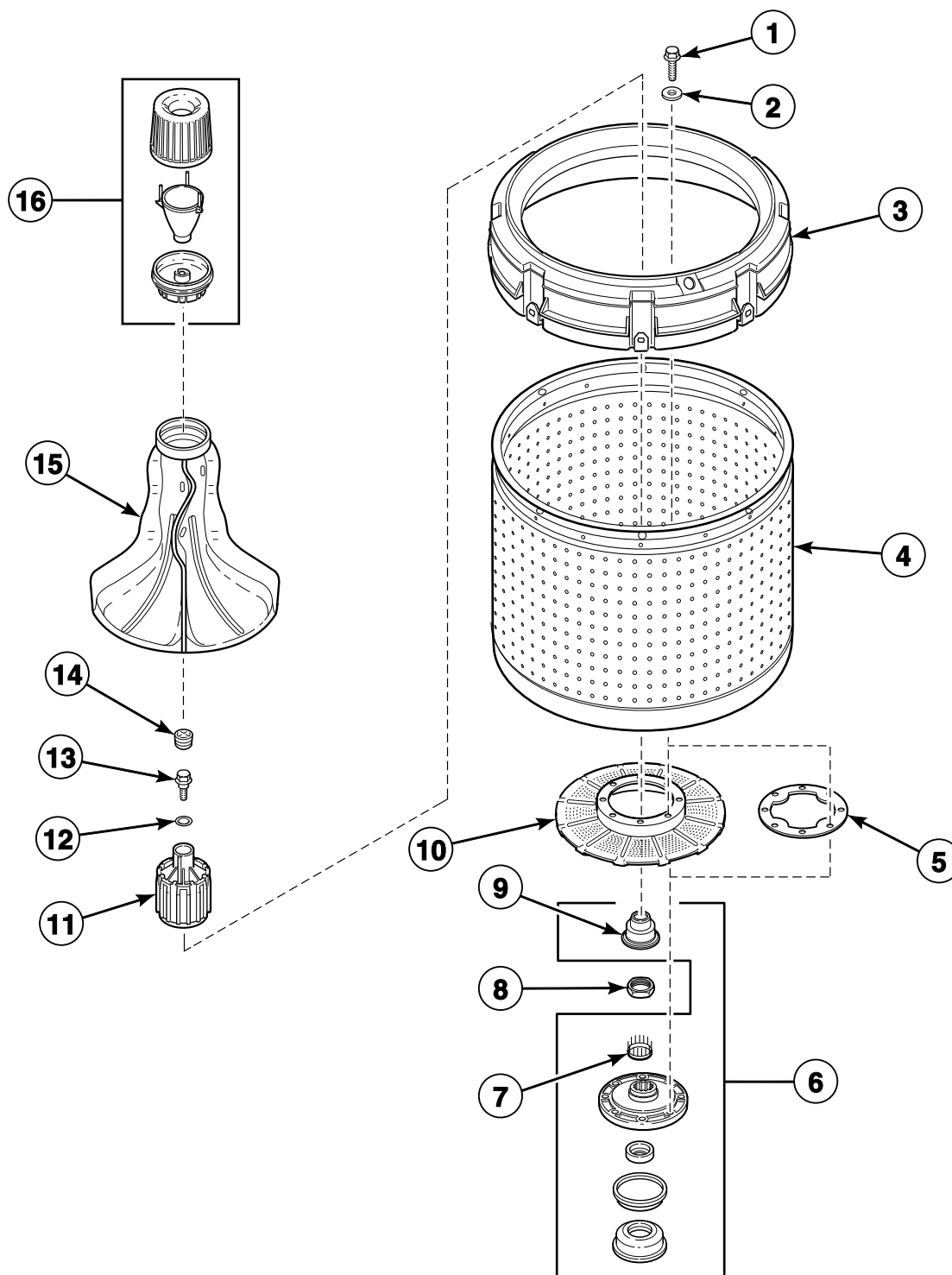


TLW1466P_39310

LWS 1 P11

Agitator, Fabric Softener Dispenser, Drive Bell, Hub and Seal Kit and Washtub

Models LWS16A*, LWS16B*, LWS16M*, LWS17A*, LWS17B*, LWS17M*, LWS45A*, LWS45B* and LWS45M*

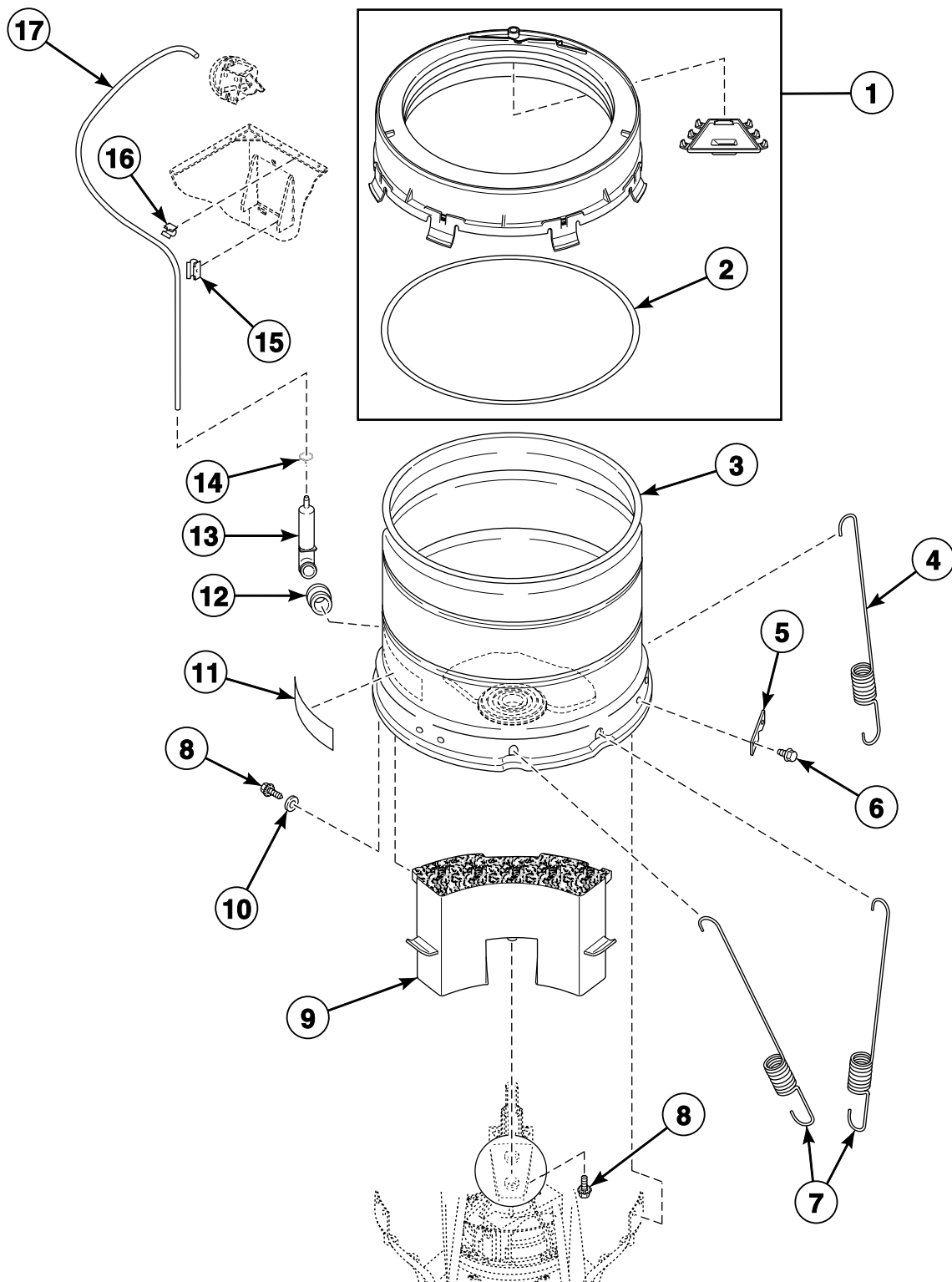


W376P_39310

LWS 1 P12

Outer Tub, Cover, Pressure Hose and Counterweight

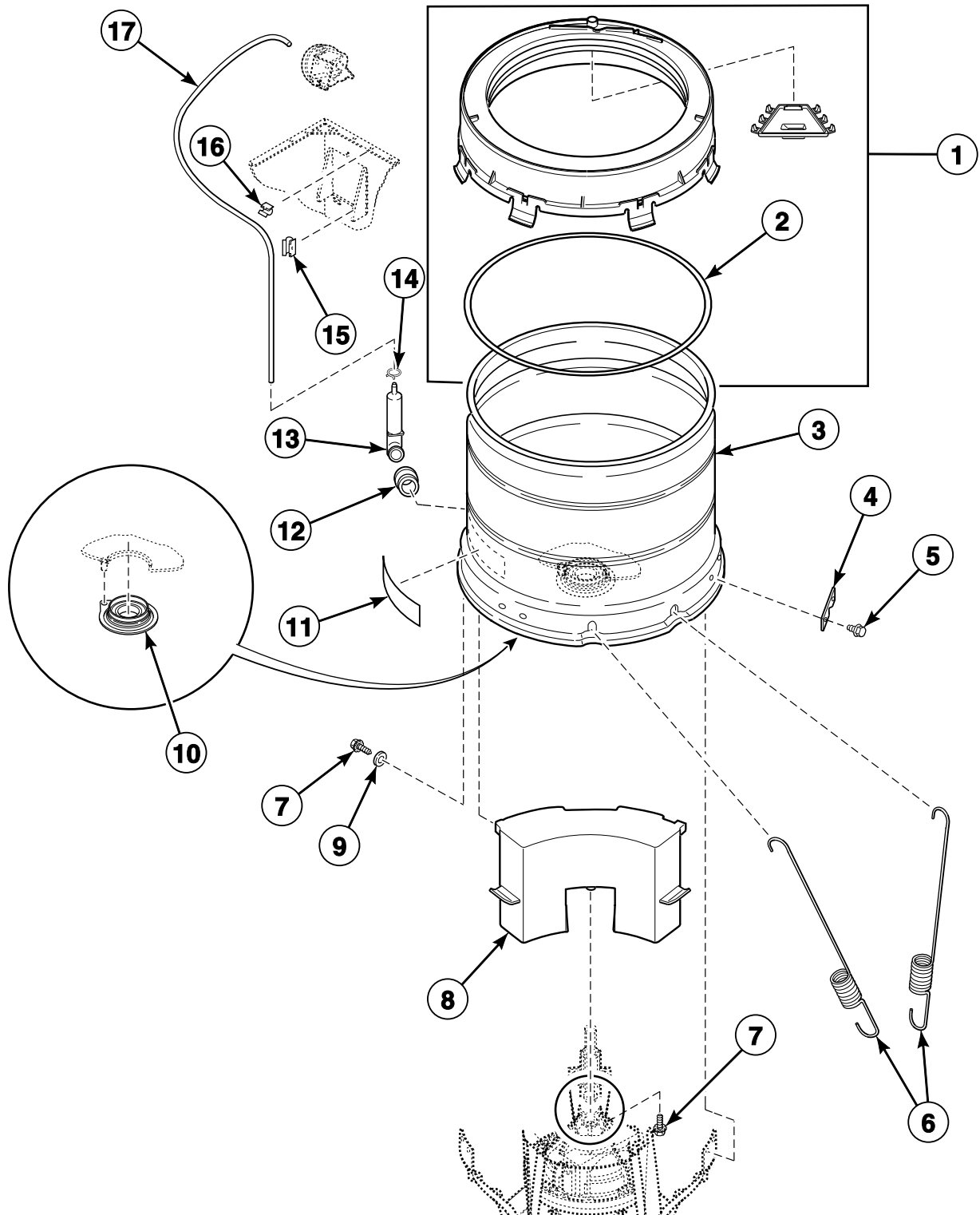
Model LWNA11SP111TW01



TLW1675P_39310

Outer Tub, Cover, Bearing and Seal Housing, Pressure Hose and Counterweight

Models LWNB11SP111TW01, LWNB11SP111TWAA, LWN311PP111TW01, LWN311SP111TW01, LWN311WP111TW01, LWN412SP111TW01, LWS01N*, LWS02N*, LWS04N*, LWS05N*, LWS16N*, LWS17N*, LWS44N*, LWS45N* and LWS49N*

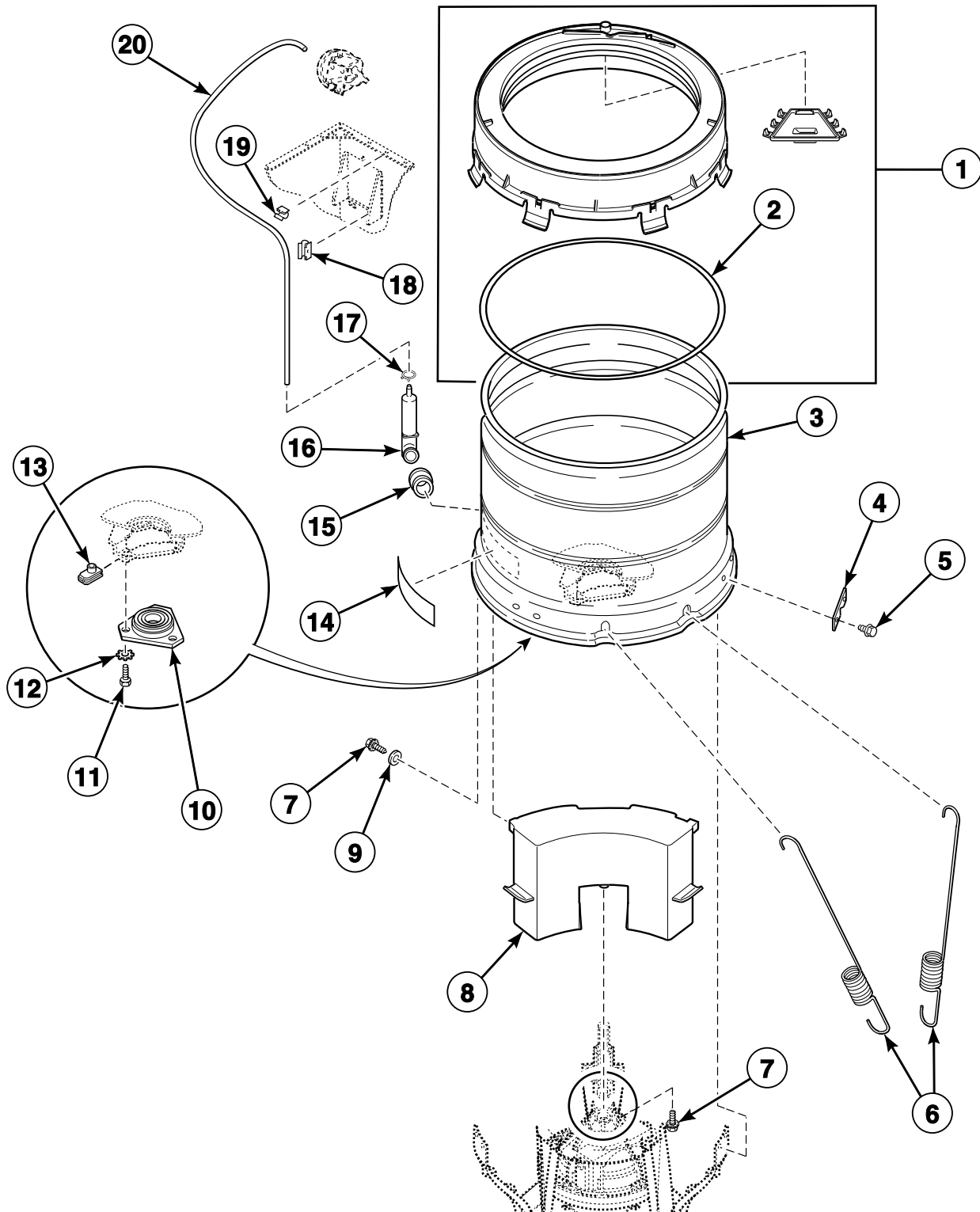


TLW1464P_39310

LWS 1 P14

Outer Tub, Cover, Bearing Housing, Pressure Hose and Counterweight

All Models Except LWNA11SP111TW01, LWNB11SP111TW01, LWNB11SP111TWAA, LWN311PP111TW01, LWN311SP111TW01, LWN311WP111TW01, LWN412SP111TW01, LWS01N*, LWS02N*, LWS04N*, LWS05N*, LWS16N*, LWS17N*, LWS44N*, LWS45N* and LWS49N*

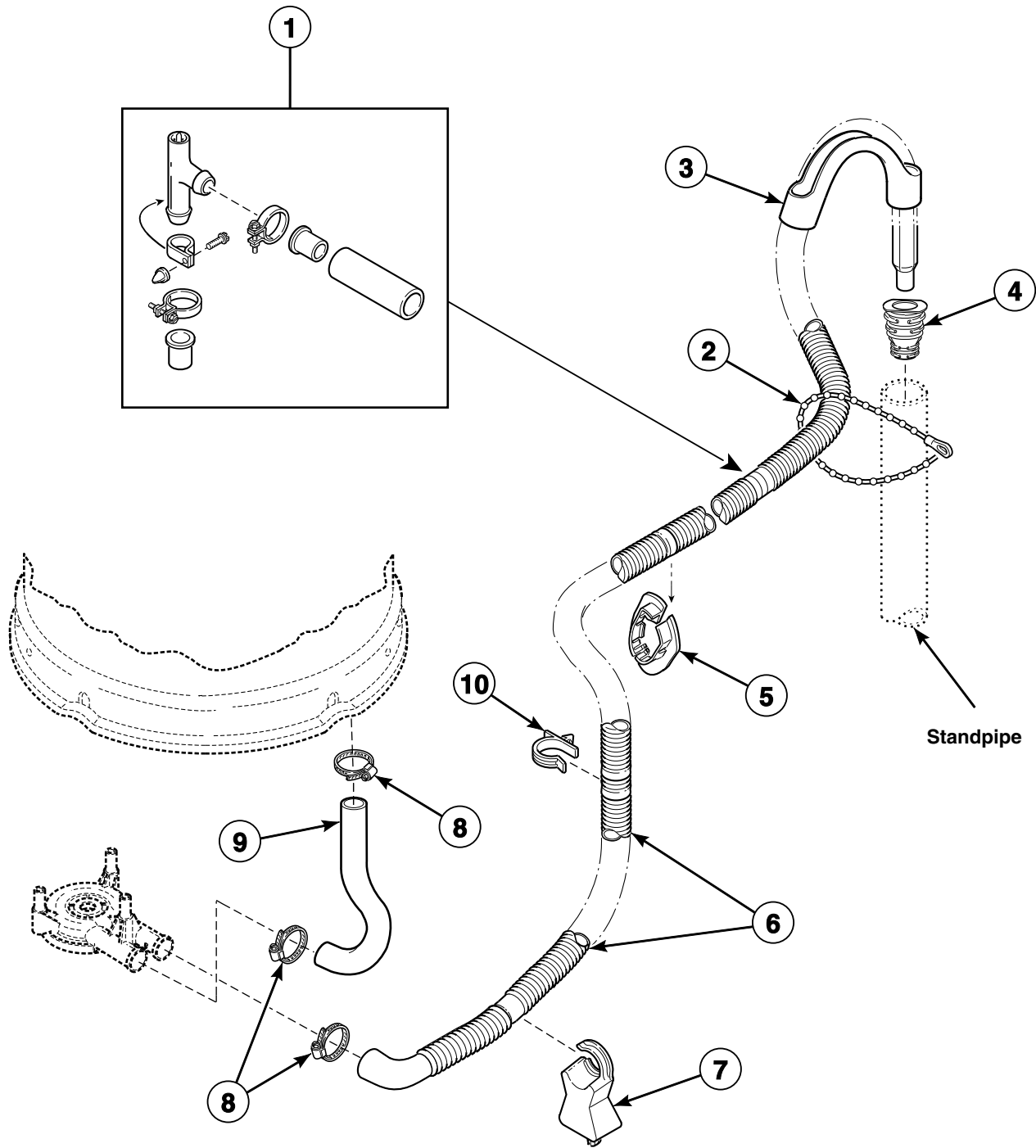


TLW1624P_39310

LWS 1 P15

© Copyright, Alliance Laundry

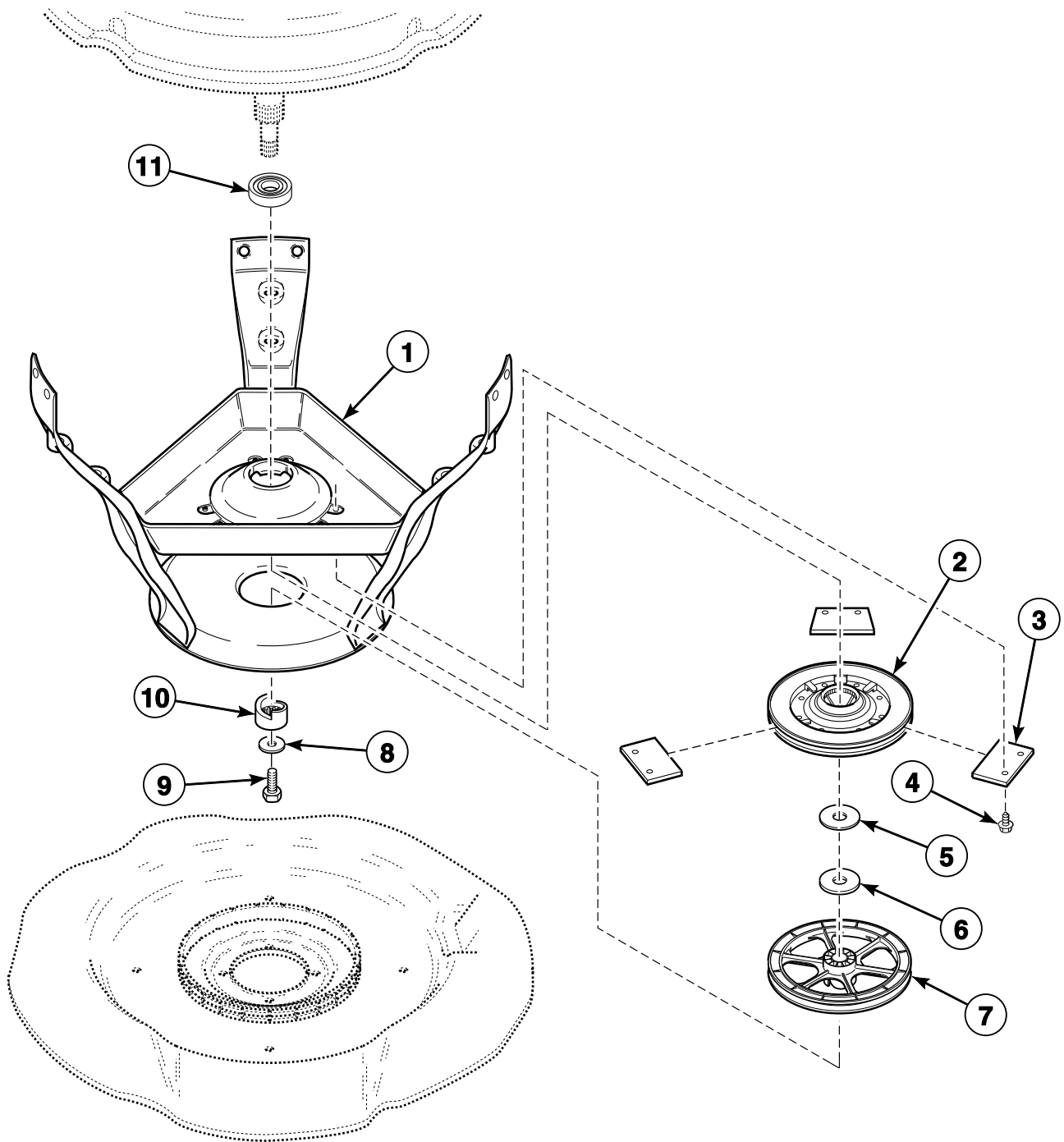
Drain Hose and Siphon Break Kit



W329P_39310

LWS 1 P16

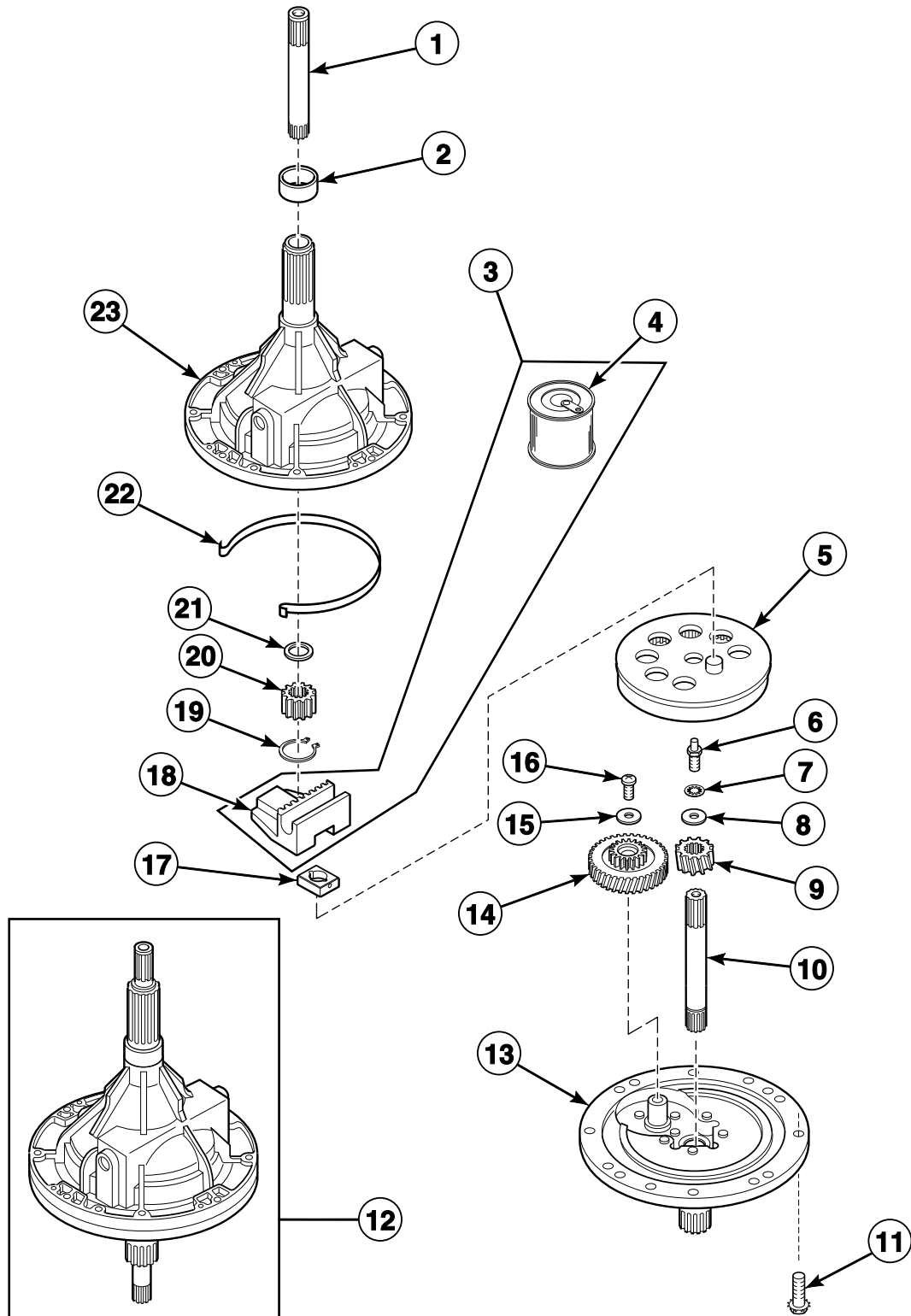
Weldment and Bearing Assembly, Brake and Pulley



W333P_39310

LWS 1 P17

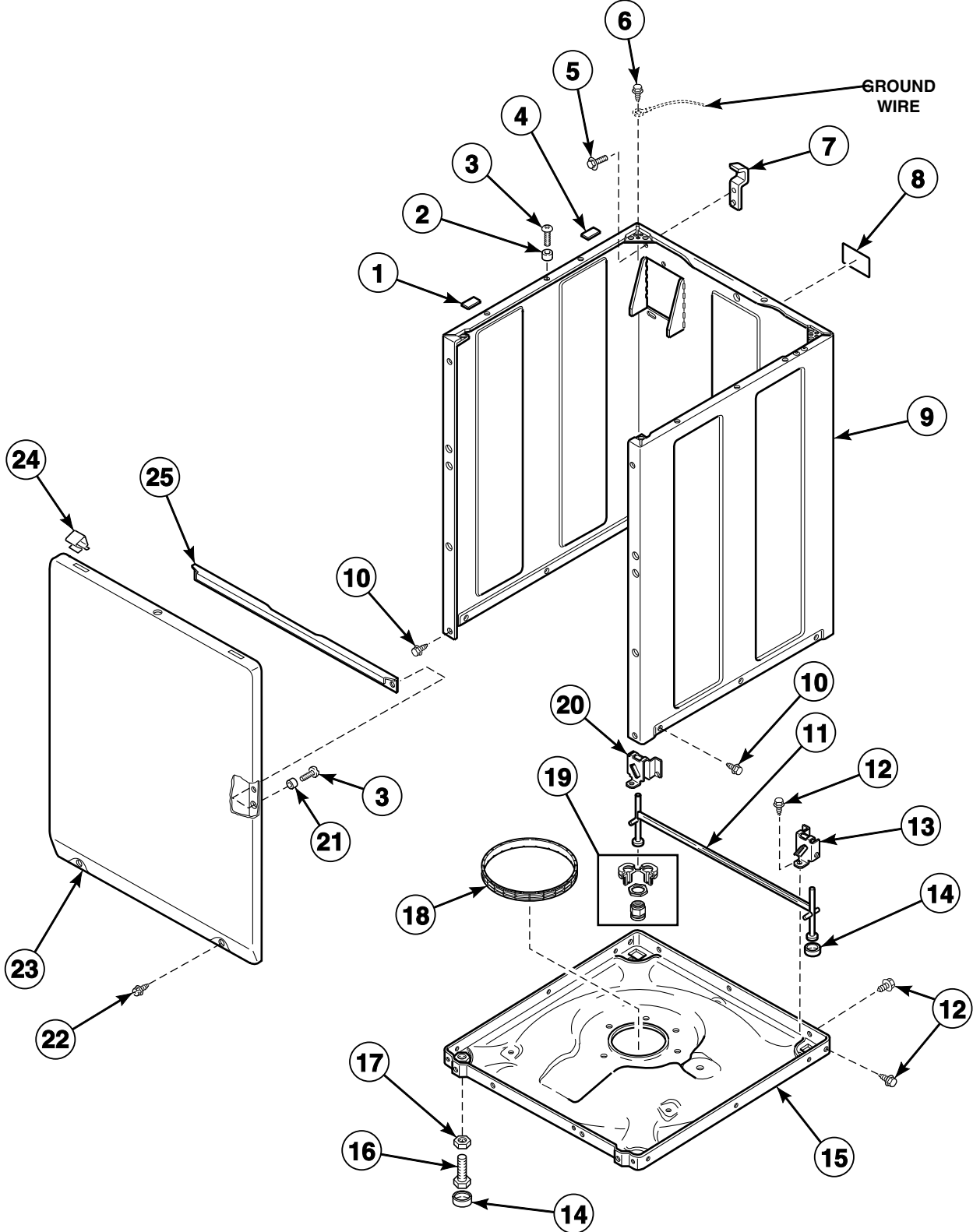
Transmission Assembly



TLW1571K_39310

LWS 1 P18

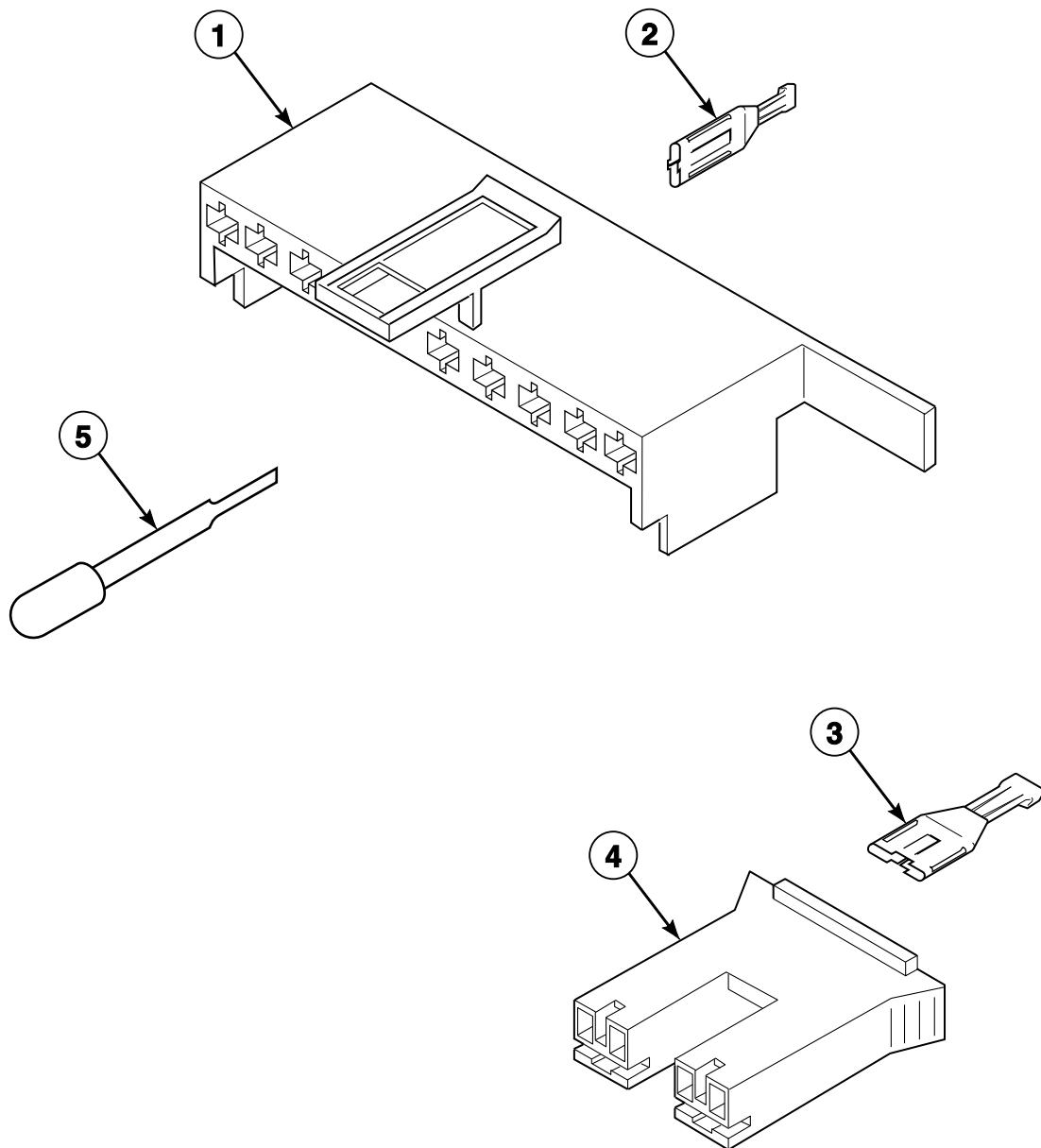
Front Panel, Base Assembly and Cabinet Kit



TLW1647P_39310

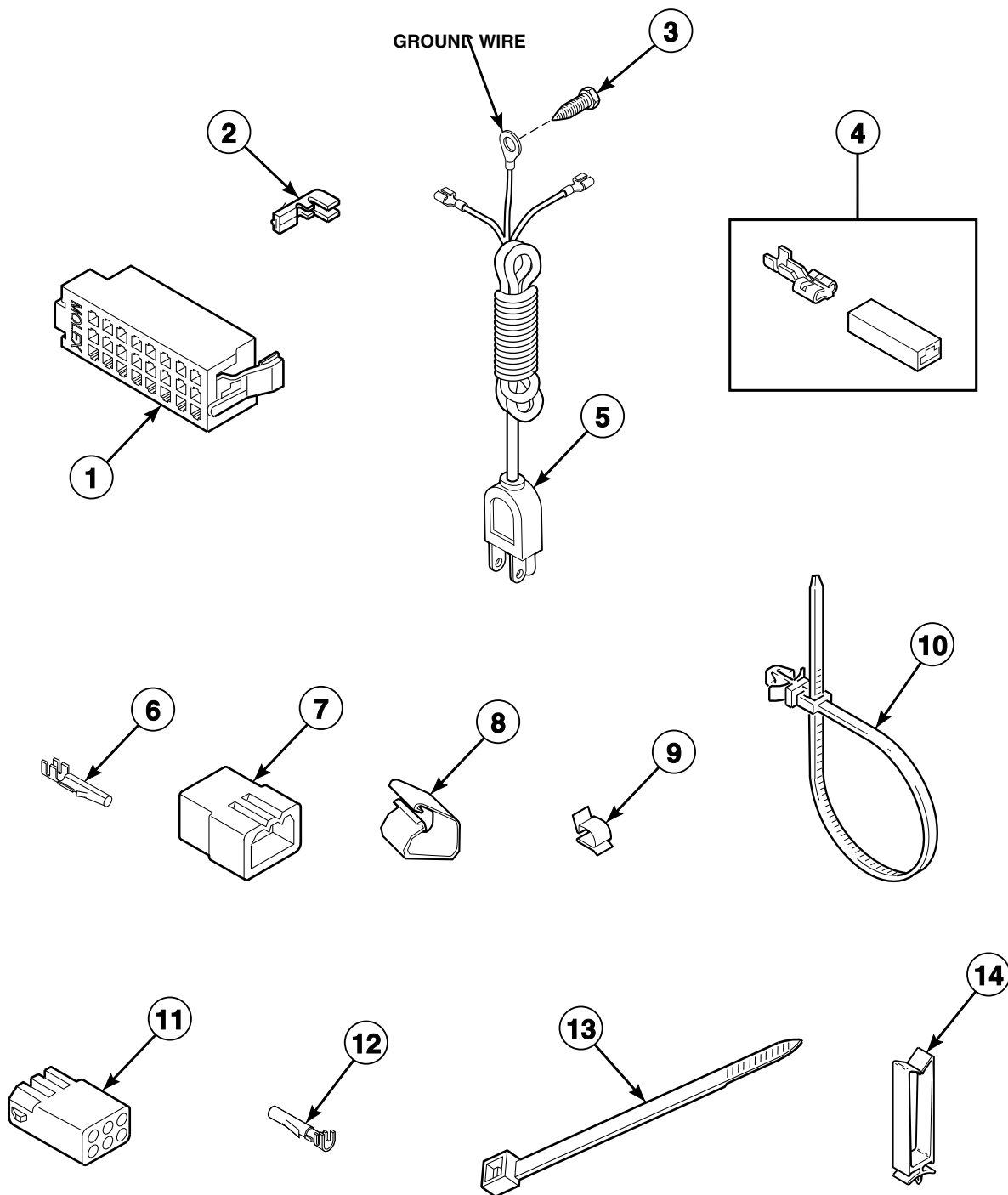
LWS 1 P19

Mixing Valve and Motor Connection Blocks, Terminals and Extractor Tool



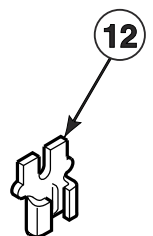
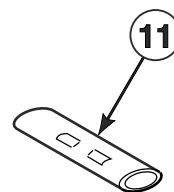
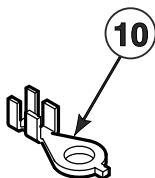
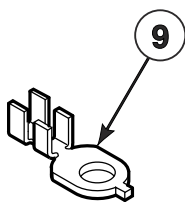
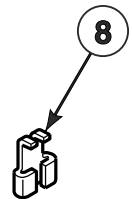
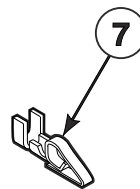
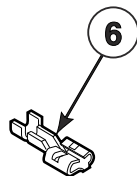
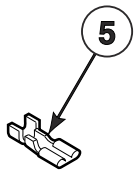
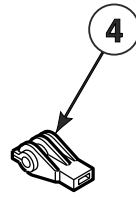
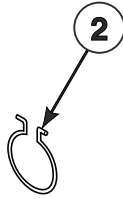
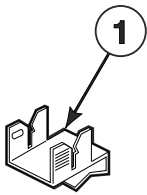
W134PZ3A_39310

Lead-In Cord and Terminals



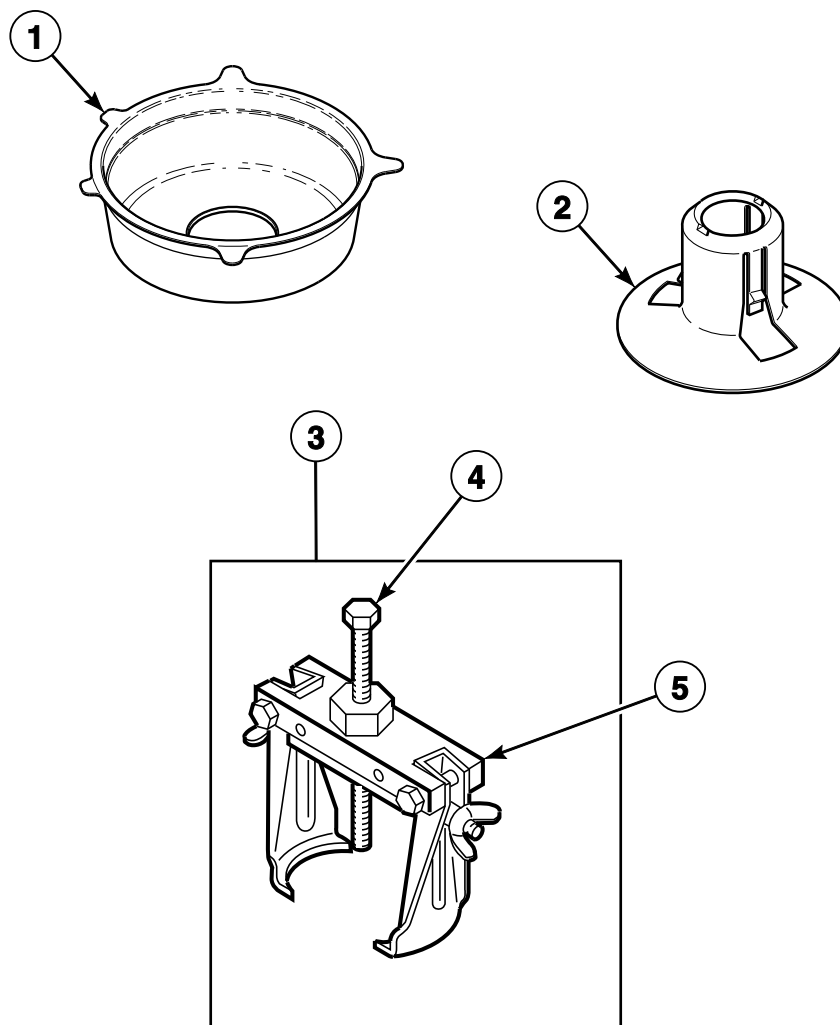
TLW1676P_39310

Terminals



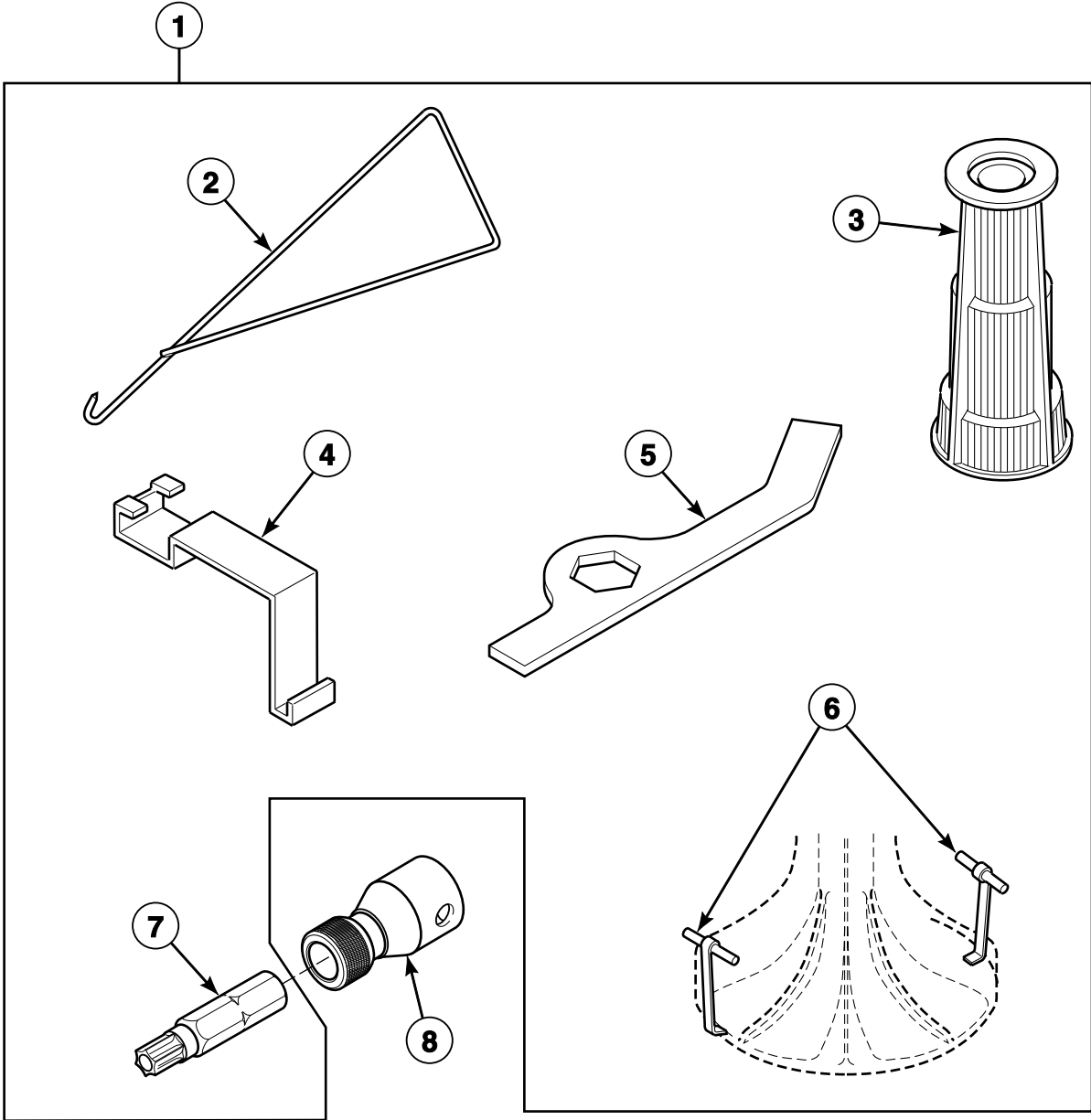
W248PZ3A_39310

Shipping Materials and Special Tools



TLW1678P_39310

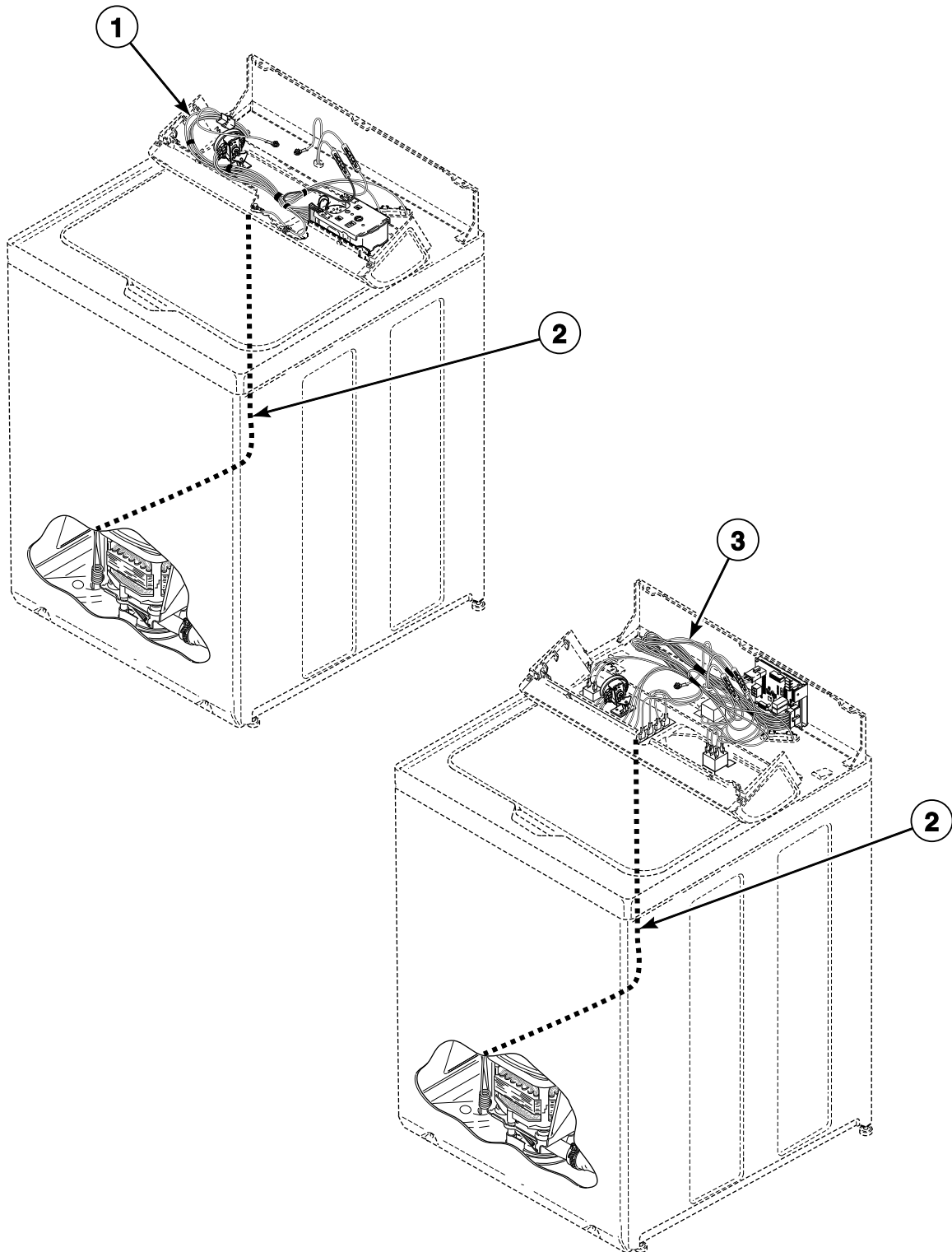
Special Tools



TLW1649P_39310

LWS 1 P24

Wire Harnesses and Wires



TLW1677P_39310