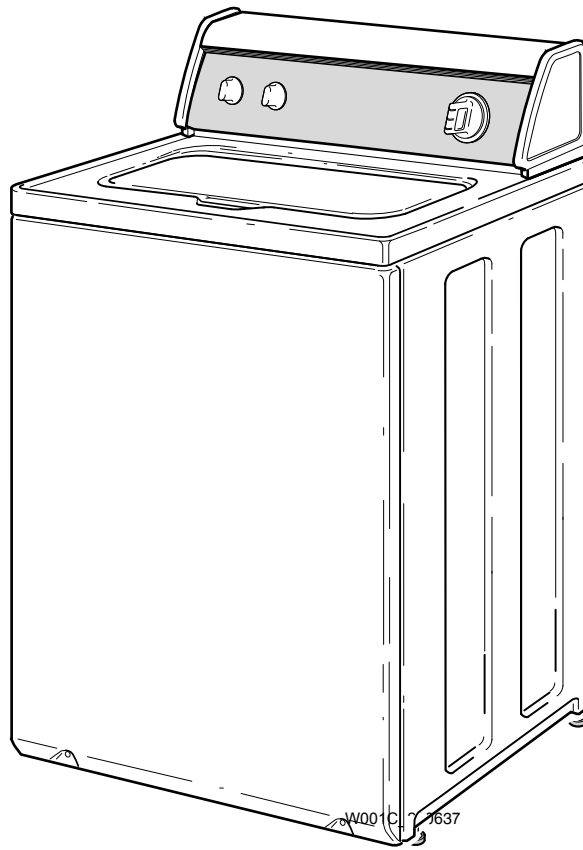


Automatic Washers NA351

Refer to Page 3 for Model Numbers

Parts



Parts Ordering Information

If literature or replacement parts are required, contact the source from whom the machine was purchased or contact Alliance Laundry Systems at (920) 748-3950 for the name and address of the nearest authorized parts distributor.

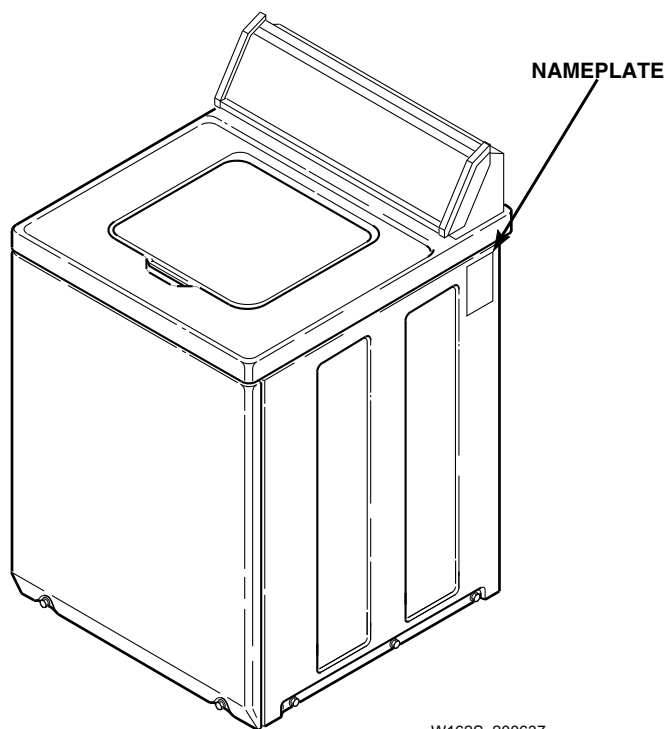
For technical assistance, call either of the numbers listed below:

(920) 748-3121 Ripon, Wisconsin

+32 56 41 20 54 Wevelgem, Belgium

Nameplate Location

When calling or writing about your product, be sure to mention model and serial numbers. Model and serial numbers are located on nameplate(s) as shown.



W162S_200637

Model Identification

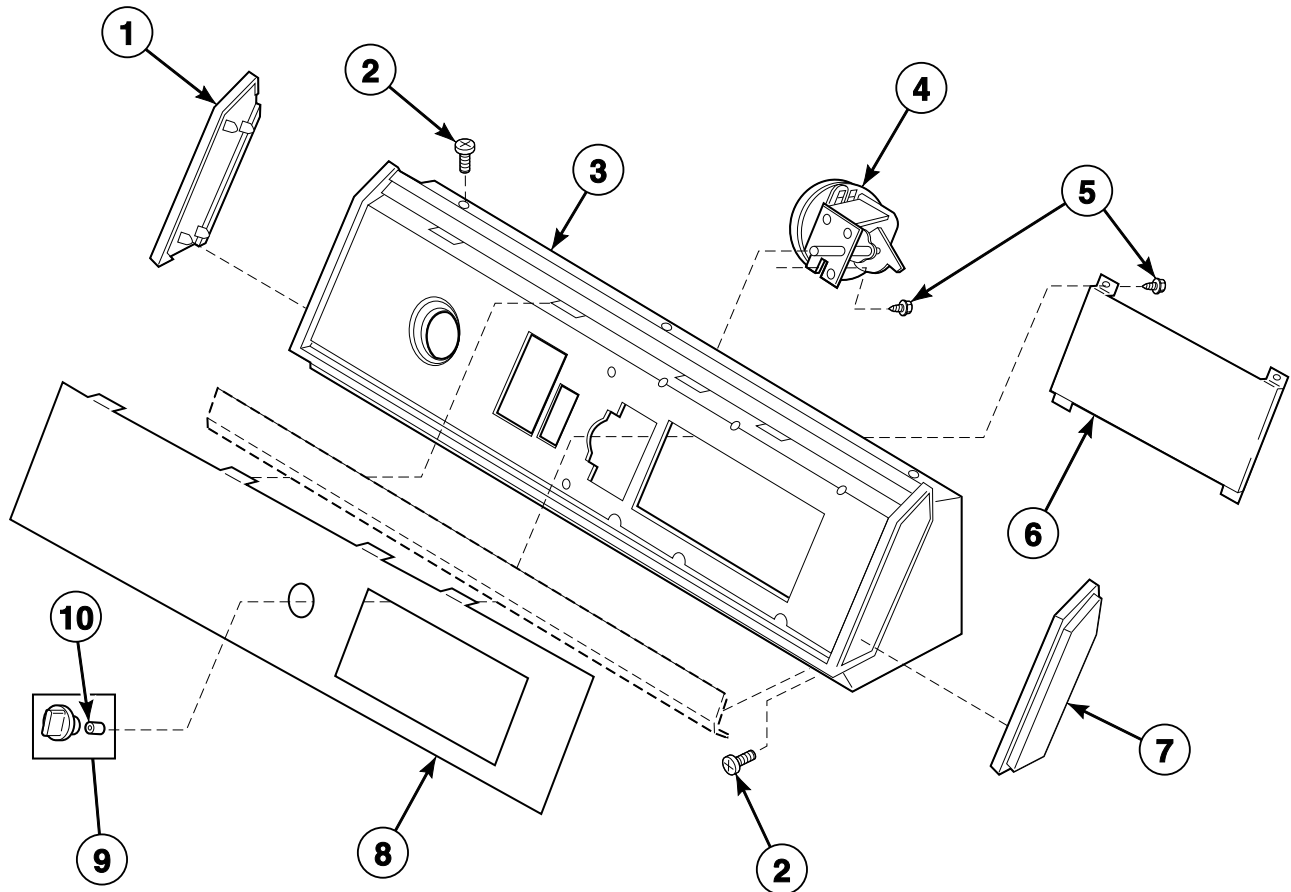
Information in this manual is applicable to these washer models:

AA3110	NA2110	NA3612	NA5531-2200
AA3111	NA2310	NA4320	NA5721
AA3210	NA2510	NA4321	NA6321
AA4110	NA3310	NA4520	NA6331
AA4111	NA3310-1000	NA4521	NA6332
AA4210	NA3310-3000	NA4521-2200	NA6520
AA4210-2210	NA3311	NA4522	NA6521
AA4211	NA3311-1168	NA4621	NA6522
AA4211-2210	NA3311-3050	NA5320	NA6530
AA4212	NA3311-3059	NA5321	NA6531
AA5121	NA3311-3062	NA5330	NA6532
AA5220	NA3311-3069	NA5331	NA6621
AA5221	NA3312	NA5331-1000	NA7321
AA5222	NA3320	NA5331-2000	NA7521
AA6121	NA3510	NA5331-3000	NA8331
AA6221	NA3510-2200	NA5331-3050	NA8531
AA7131	NA3510-3300	NA5331-3062	NA8631
AA7231	NA3511	NA5520	
AA8231	NA3511-3300	NA5521	
AA9131	NA3512	NA5530	
AA9231	NA3520	NA5531	

NA3511

Graphic Panel, Control Hood and Controls (Drawing 1 of 9)

Models AA9131, AA9231, NA6331, NA6332, NA6530, NA6531, NA6532, NA8331, NA8531 and NA8631

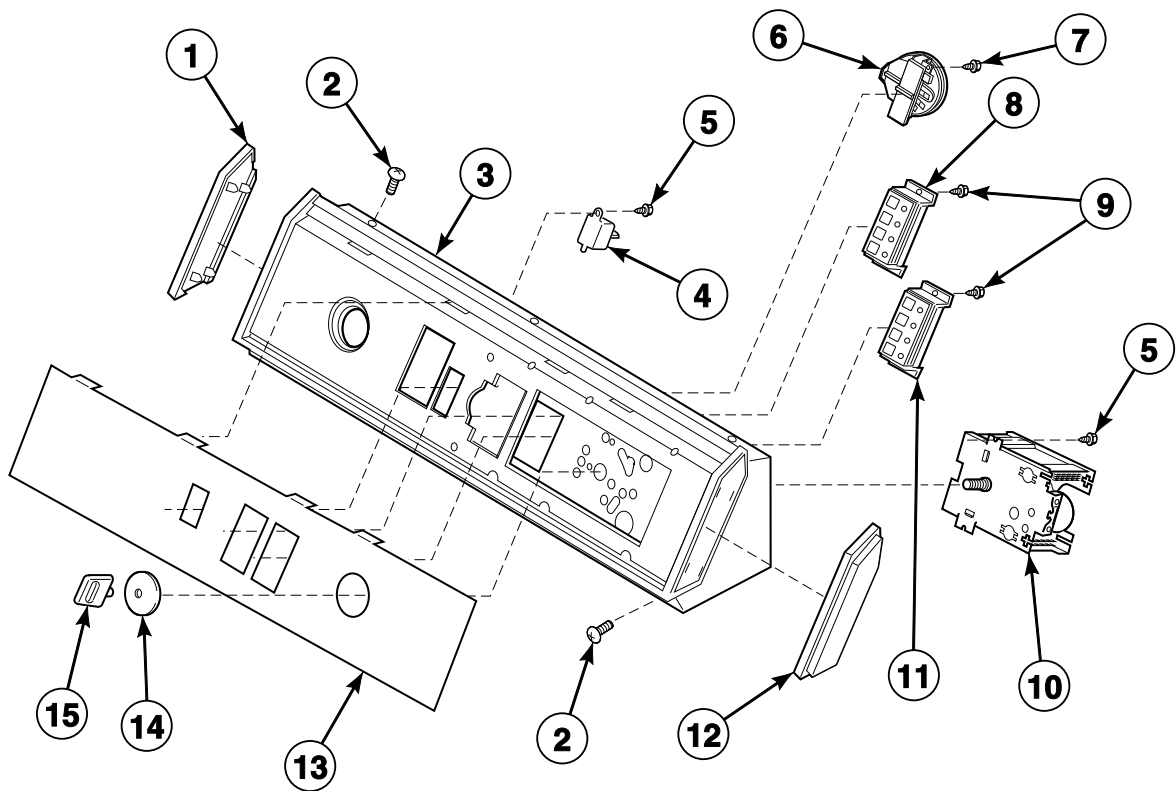


TLW1679P_200637

NA3511 P1

Graphic Panel, Control Hood and Controls (Drawing 2 of 9)

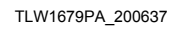
Models NA7321 and NA7521



TLW1680P_200637

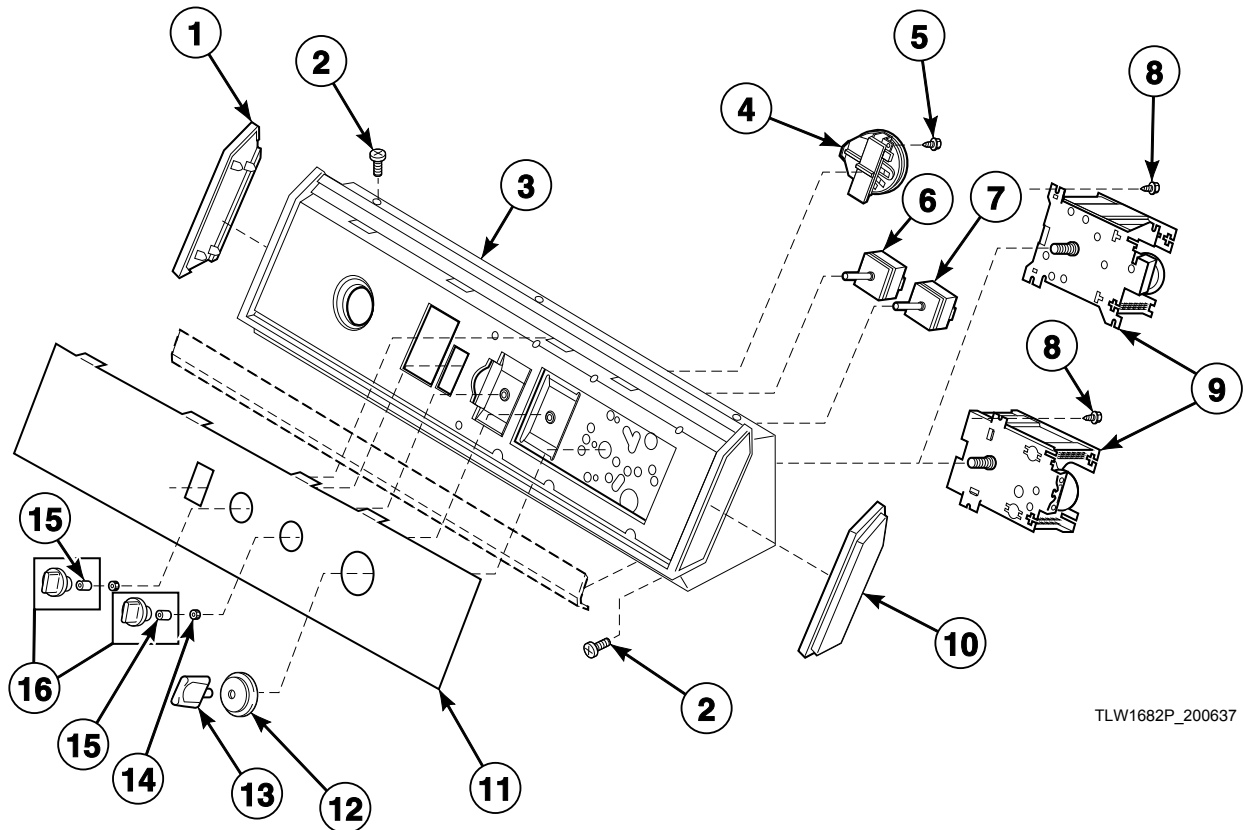
NA3511 P2

Models AA7131, AA7231, AA8231, NA5330, NA5331, NA5331-1000, NA5331-2000, NA5331-3000, NA5331-3050, NA5331-3062, NA5530, NA5531 and NA5531-2200



© Copyright, Alliance Laundry Systems LLC – DO NOT COPY or TRANSMIT

Models AA6121, AA6221, NA6321, NA6520, NA6521, NA6522 and NA6621

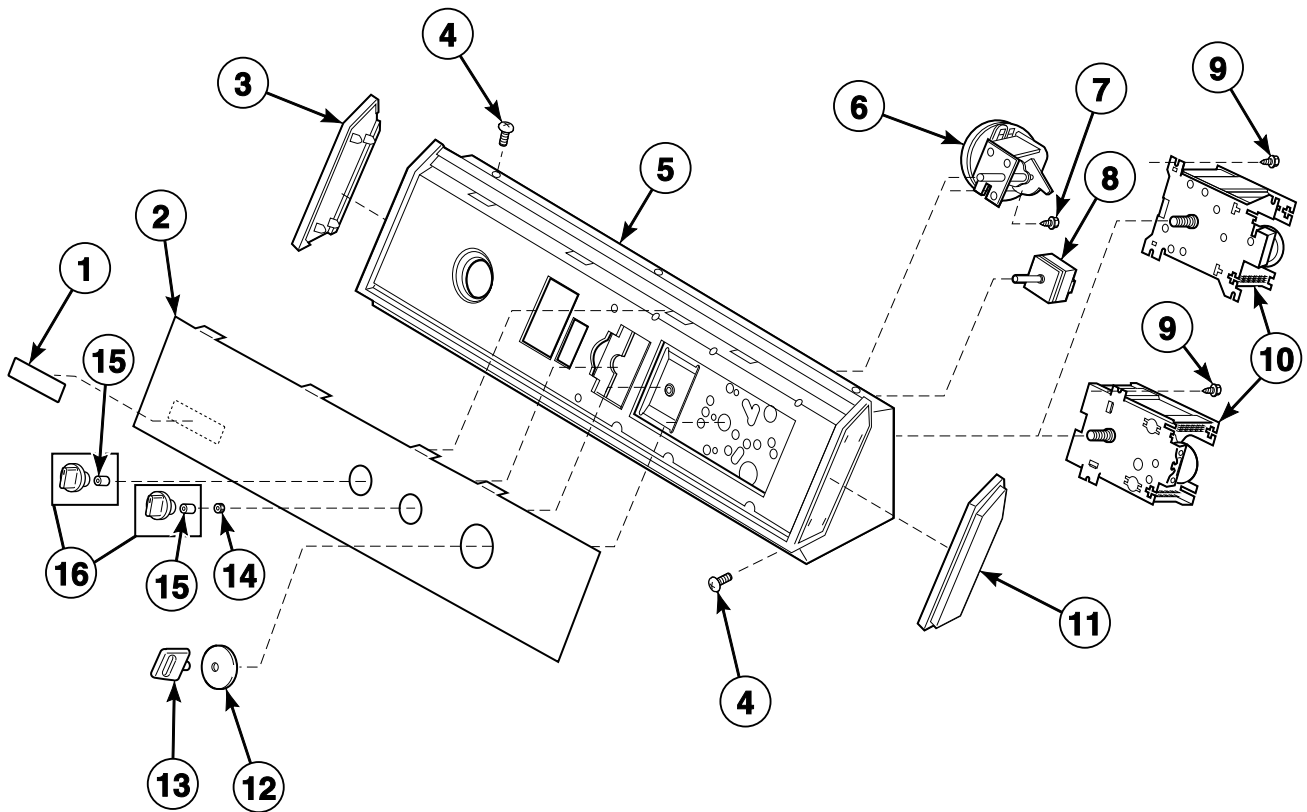


TLW1682P_200637

NA3511 P4

Graphic Panel, Control Hood and Controls (Drawing 5 of 9)

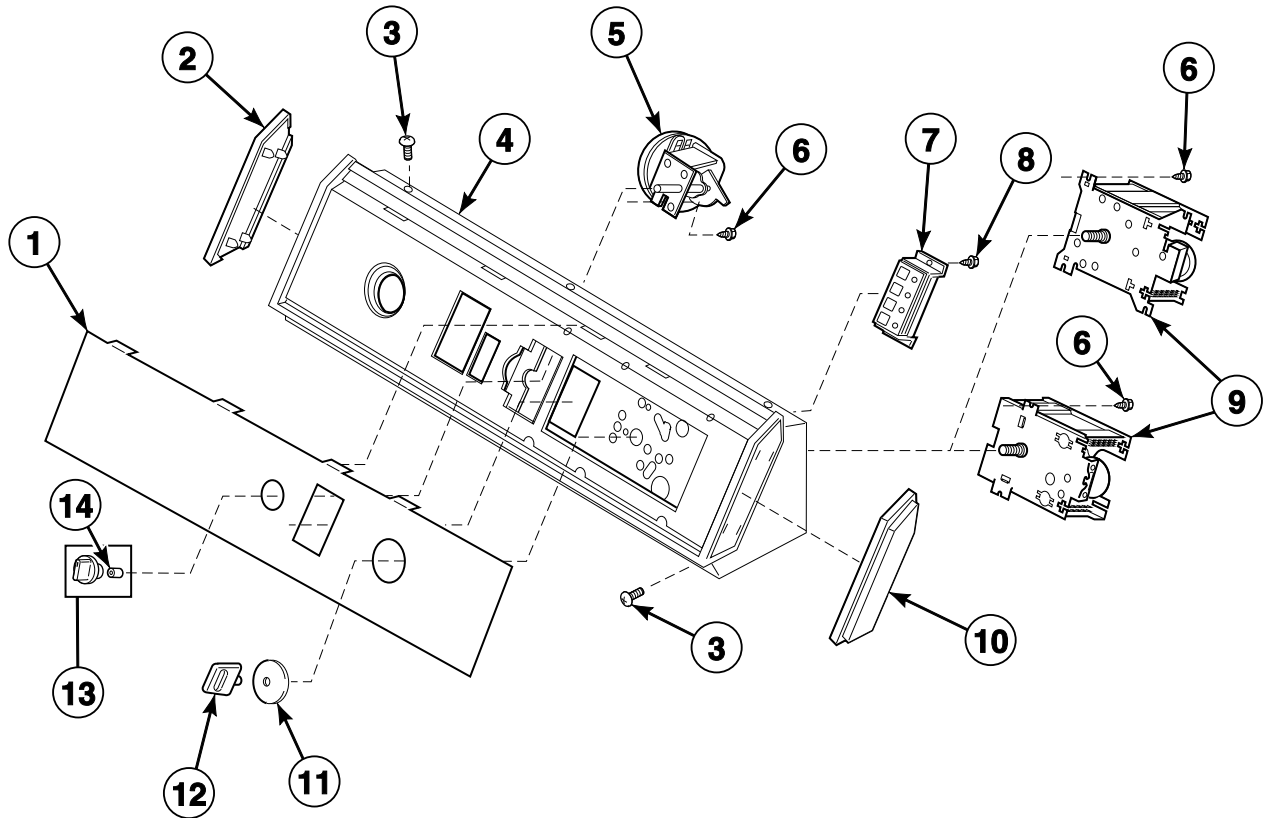
Models AA3110, AA3111, AA3210, AA4110, AA4111, AA4210, AA4210-2210, AA4211, AA4211-2210, AA4212, AA5121, AA5221, NA3612, NA4621 and NA5721



TLW1683P_200637

NA3511 P5

Models NA5320, NA5321, NA5520 and NA5521

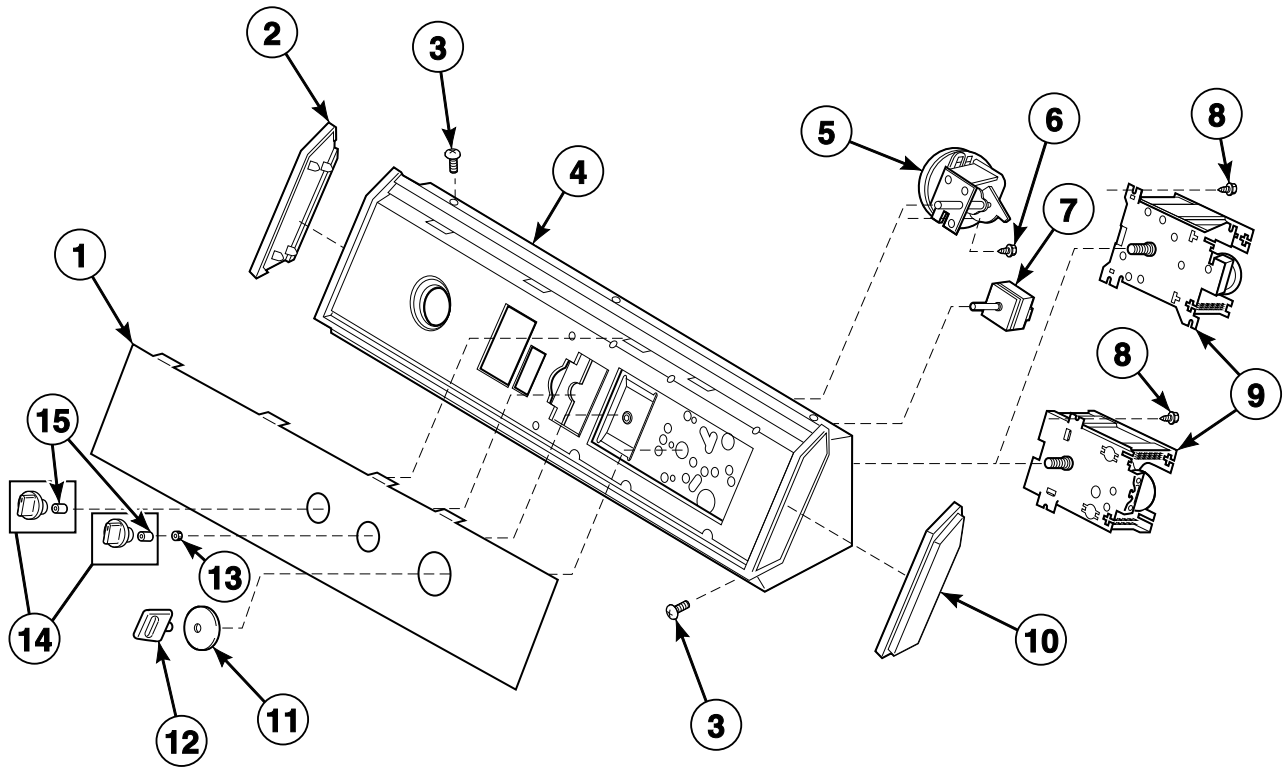


TLW1684P_200637

NA3511 P6

Graphic Panel, Control Hood and Controls (Drawing 7 of 9)

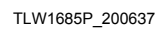
Models AA5220, AA5222, NA4320, NA4321, NA4520, NA4521, NA4521-2200 and NA4522



TLW1685P_200637

NA3511 P7

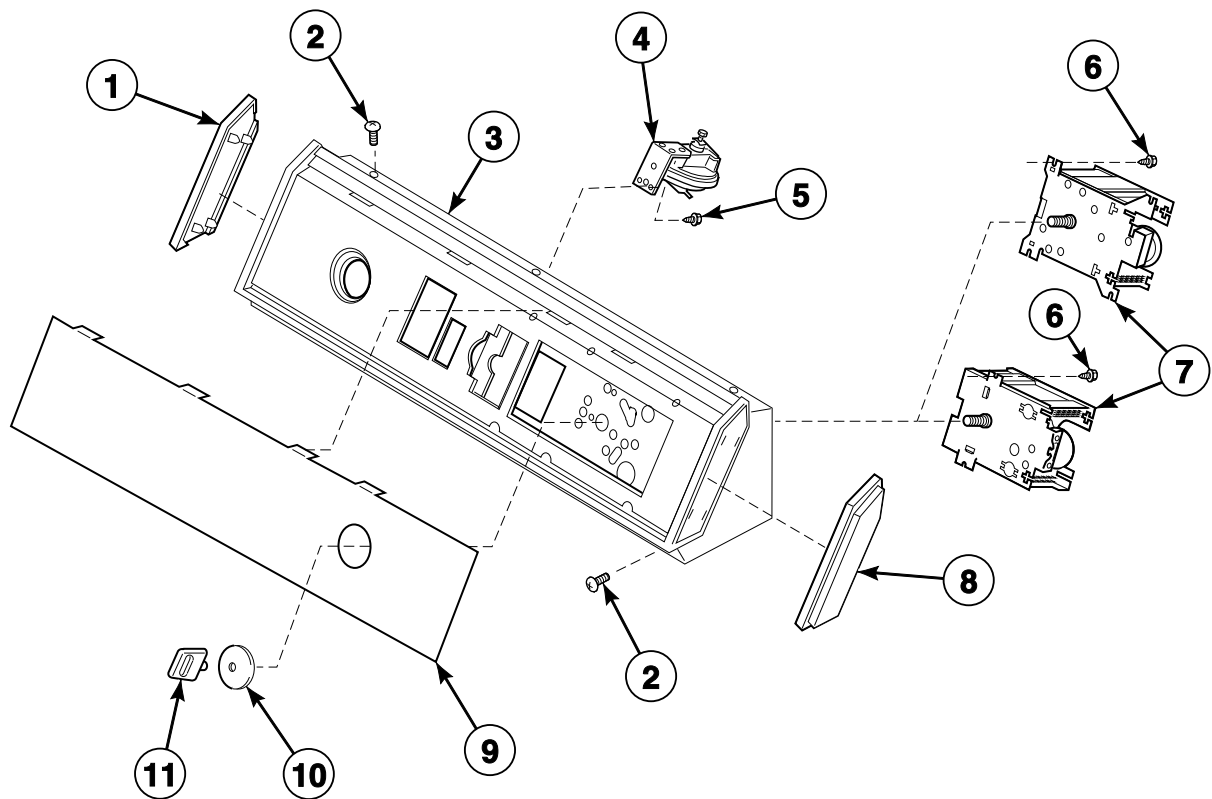
Models NA2310, NA2510, NA3310, NA3310-1000, NA3310-3000, NA3311, NA3311-1168, NA3311-3050, NA3311-3059, NA3311-3062, NA3311-3069, NA3312, NA3320, NA3510, NA3510-2200, NA3510-3300, NA3511, NA3511-3300, NA3512 and NA3520



© Copyright, Alliance Laundry Systems LLC – DO NOT COPY or TRANSMIT

Graphic Panel, Control Hood and Controls (Drawing 9 of 9)

Model NA2110

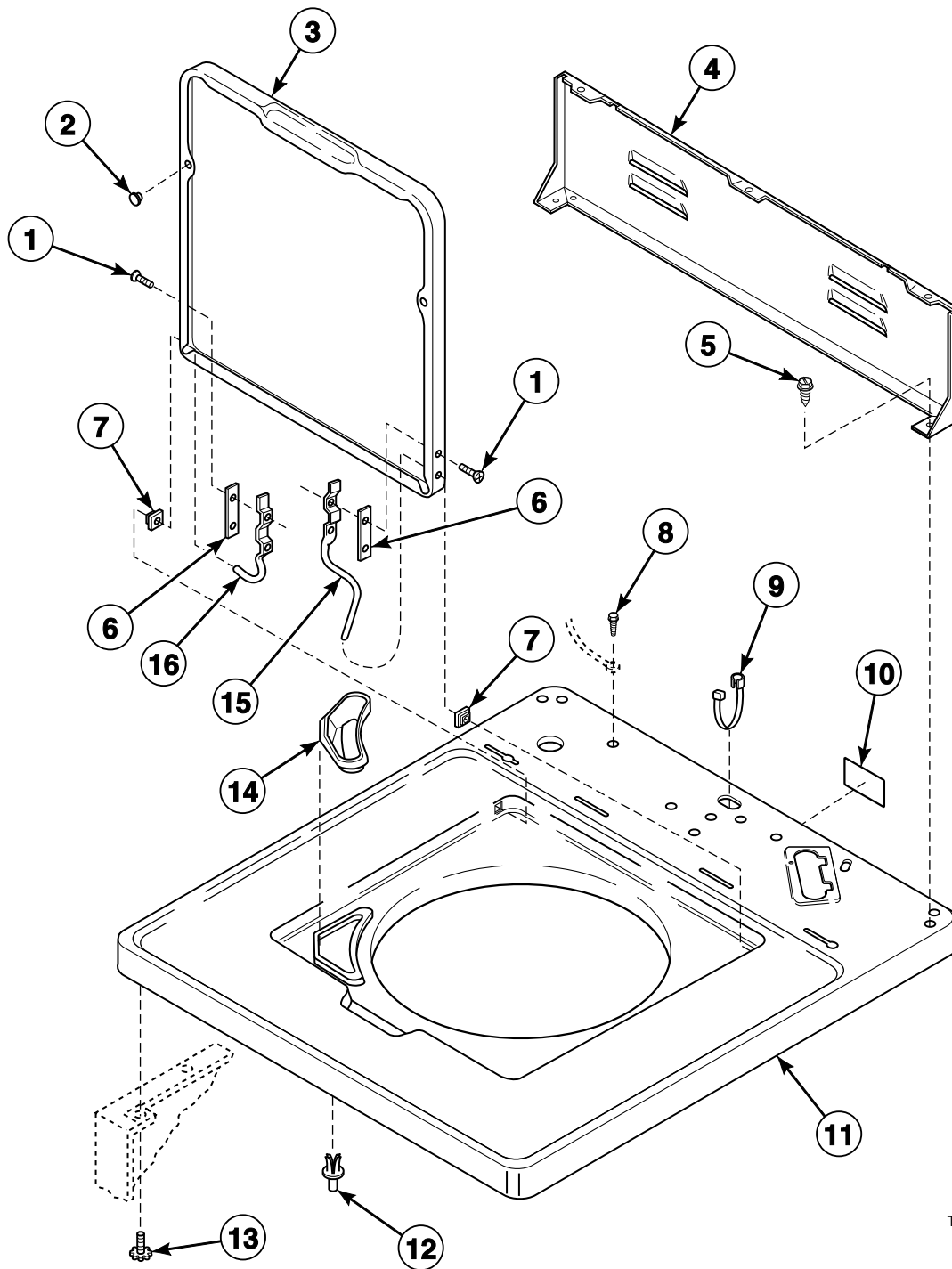


TLW1687P_200637

NA3511 P9

Cabinet Top, Loading Door and Control Hood Rear Panel (Drawing 1 of 2)

Model NA2110 Starting Serial No. R1624440YK

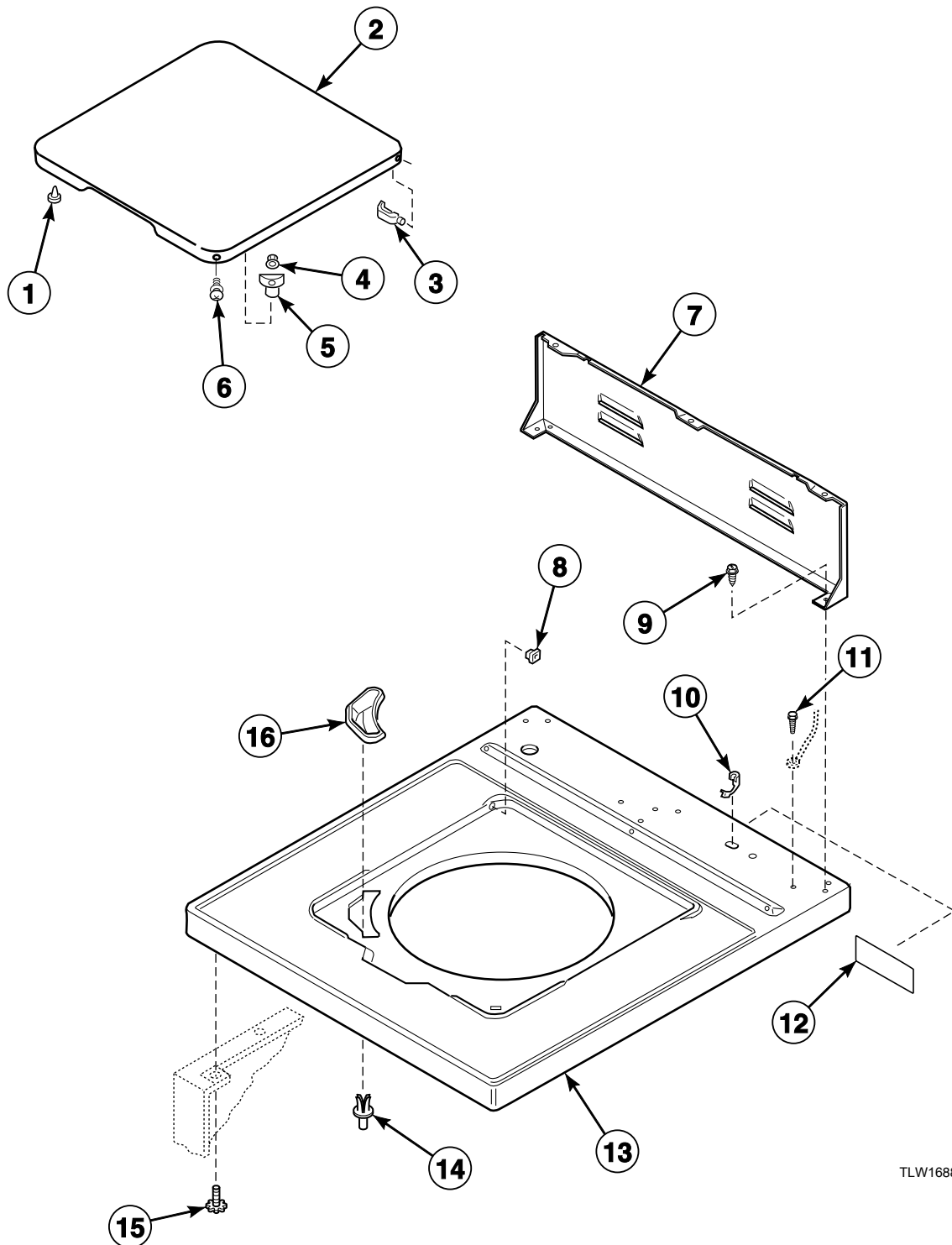


TLW1681P_200637

NA3511 P10

Cabinet Top, Loading Door and Control Hood Rear Panel (Drawing 2 of 2)

All Models Except NA2110 Starting Serial No. R1624440YK

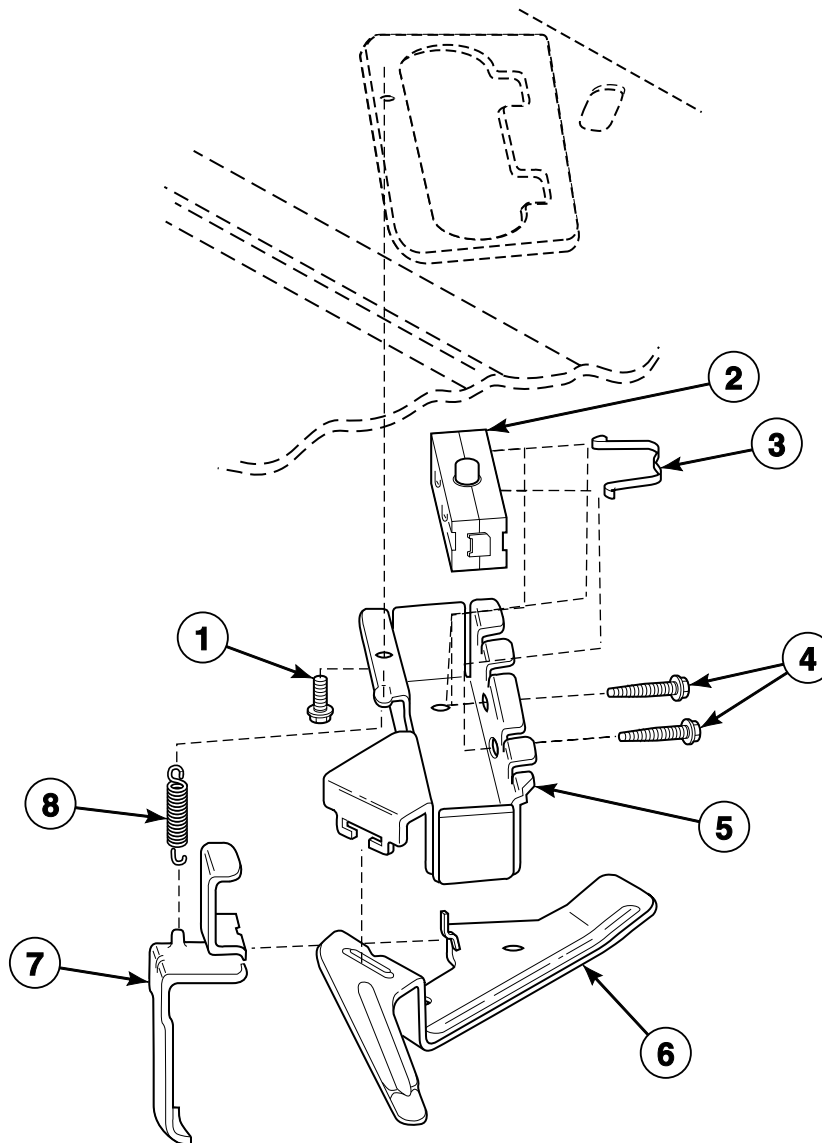


TLW1688P_200637

NA3511 P11

Lid Switch

Model NA2110 Starting Serial No. R1624440YK

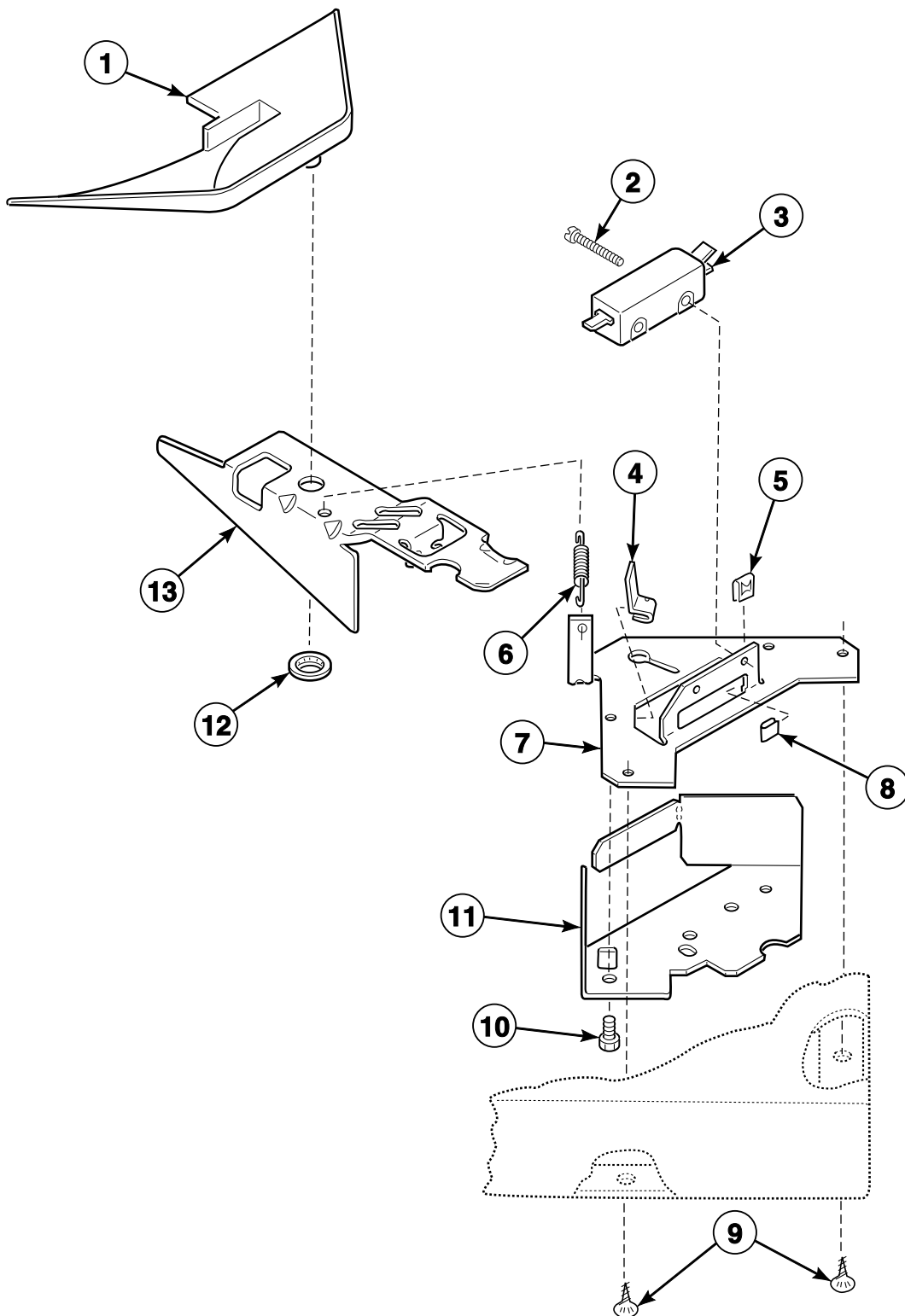


TLW1704P_200637

NA3511 P12

Loading Door Switch and Bracket Assembly

All Models Except NA2110 Starting Serial No. R1624440YK

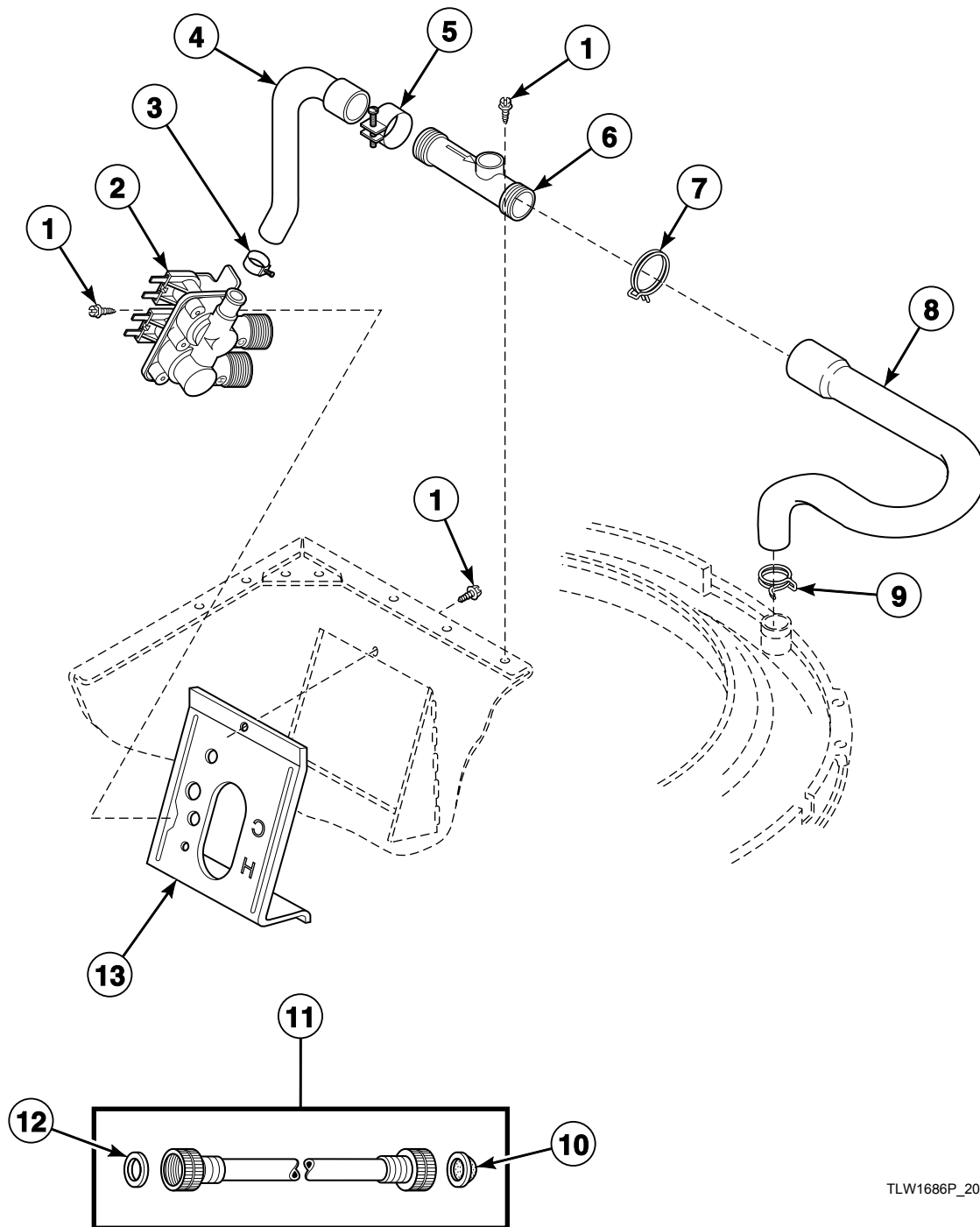


TLW1689P_200637

NA3511 P13

Inlet Hose, Filler Hose, Back Flow Preventer and Mixing Valve Mounting Bracket (Drawing 1 of 2)

Model NA2110 Starting Serial No. R1624440YK

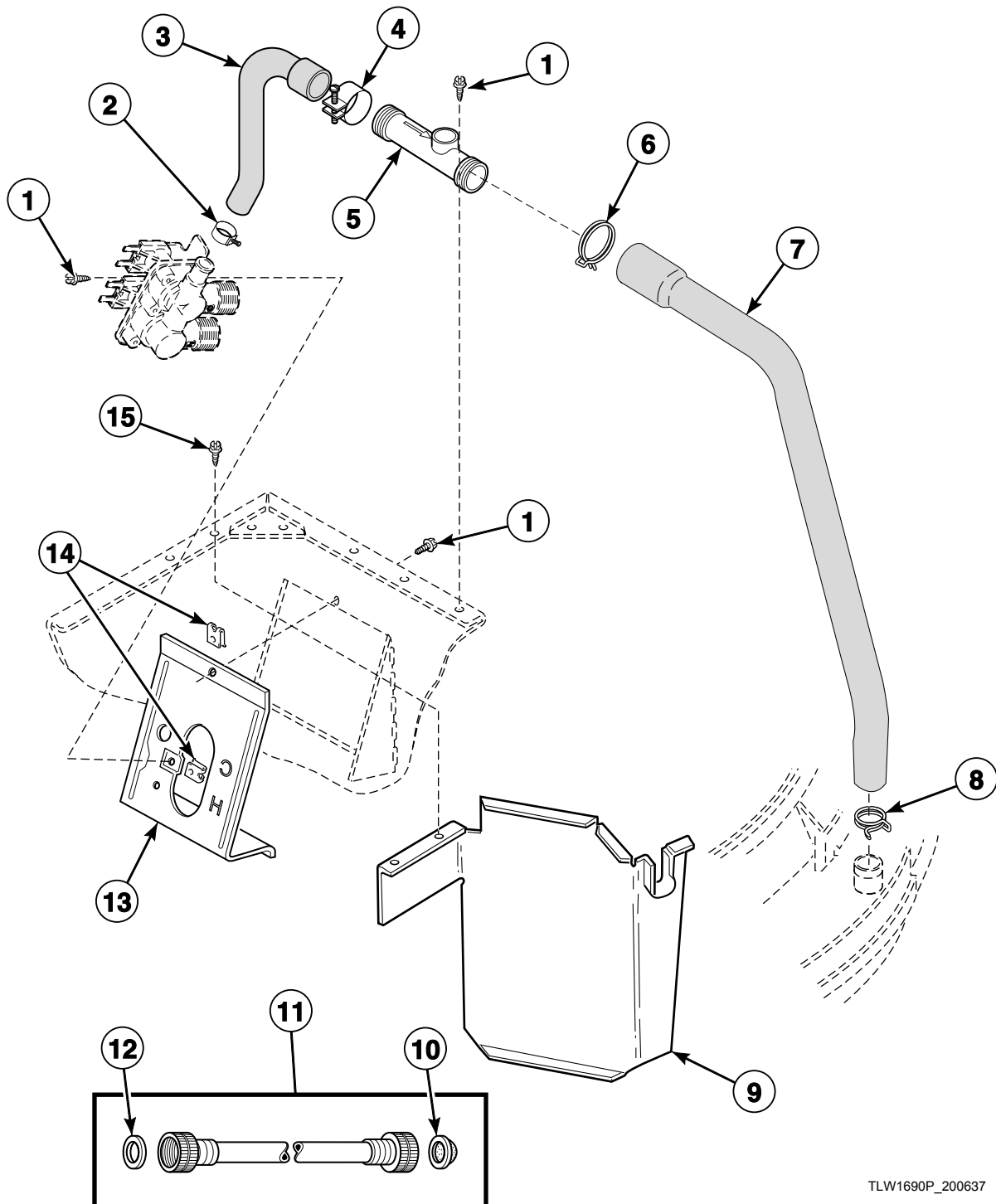


TLW1686P_200637

NA3511 P14

Inlet Hose, Filler Hose, Back Flow Preventer and Mixing Valve Mounting Bracket (Drawing 2 of 2)

All Models Except NA2110 Starting Serial No. R1624440YK

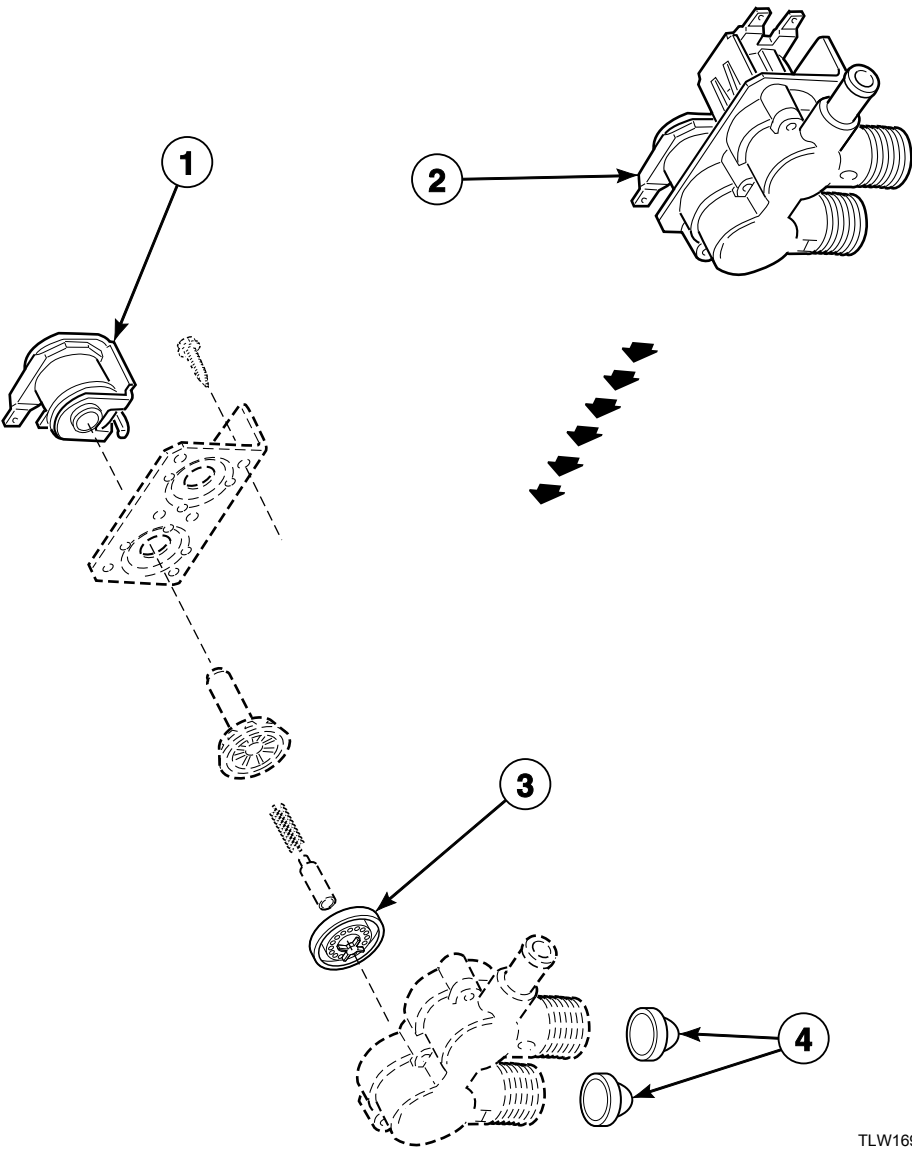


TLW1690P_200637

NA3511 P15

Mixing Valve Assembly (Drawing 1 of 2)

Elbi Company

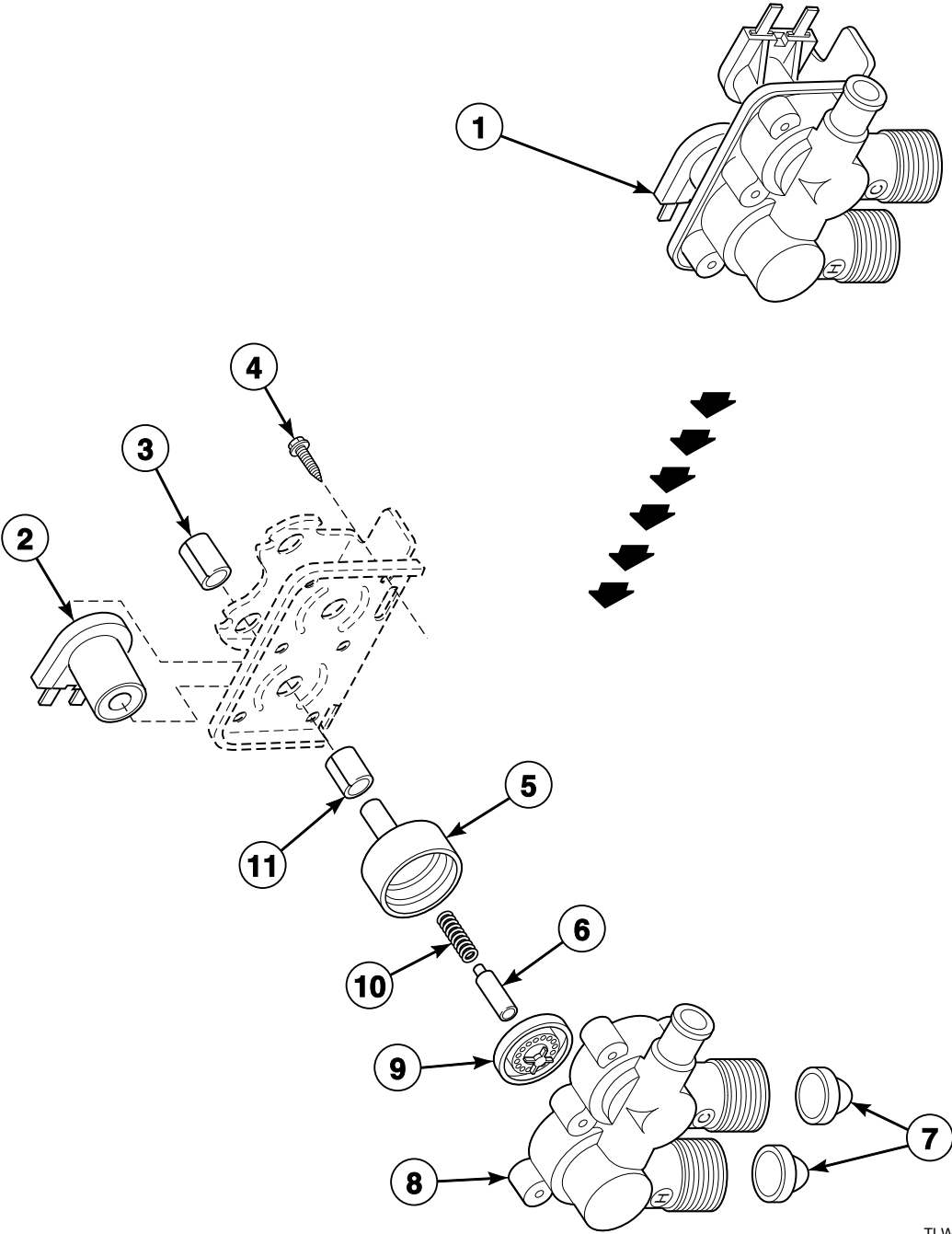


TLW1691P_200637

NA3511 P16

Mixing Valve Assembly (Drawing 2 of 2)

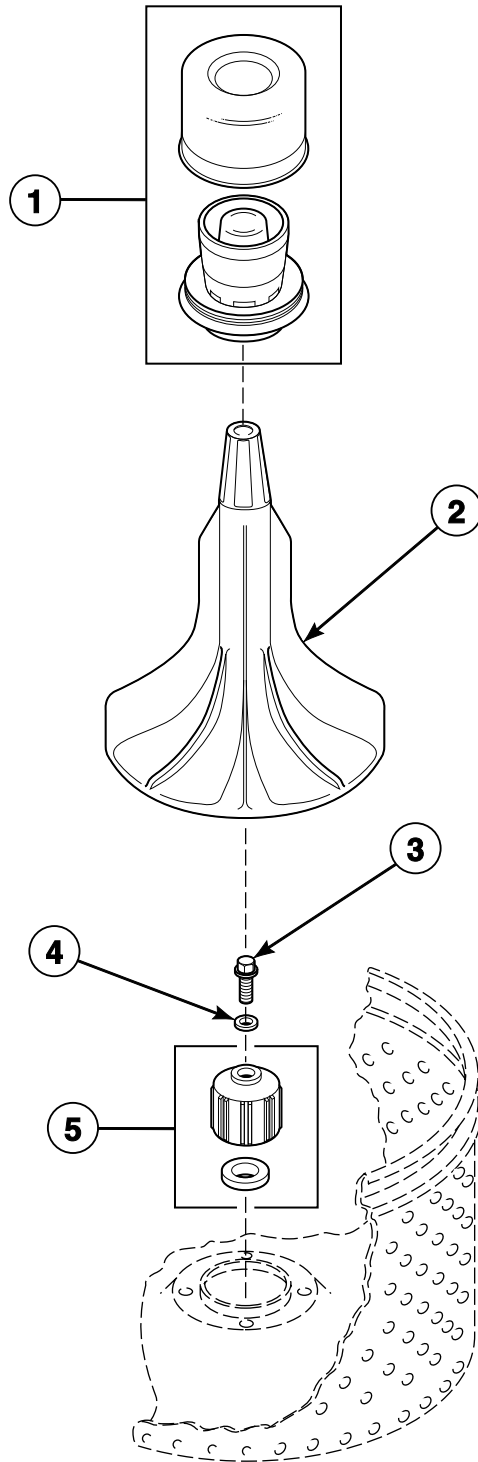
Dole or Eaton Company



TLW1692P_200637

NA3511 P17

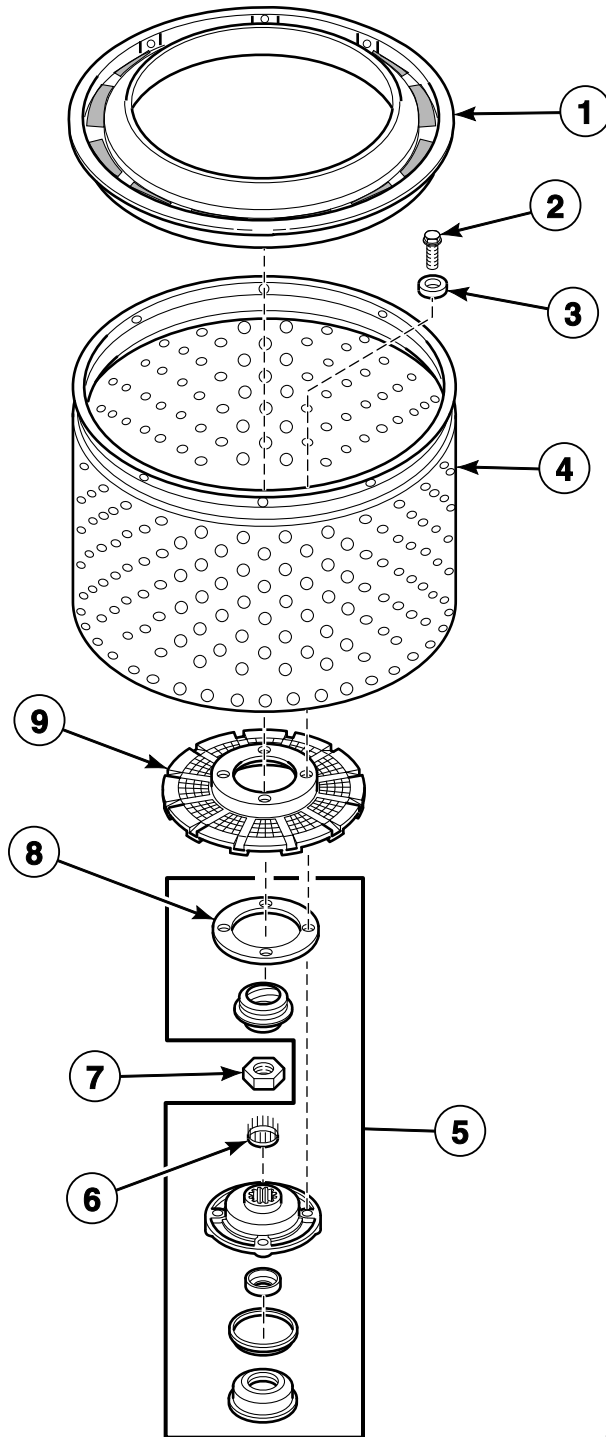
Agitator, Drive Bell and Seal Kit



TLW1693P_200637

NA3511 P18

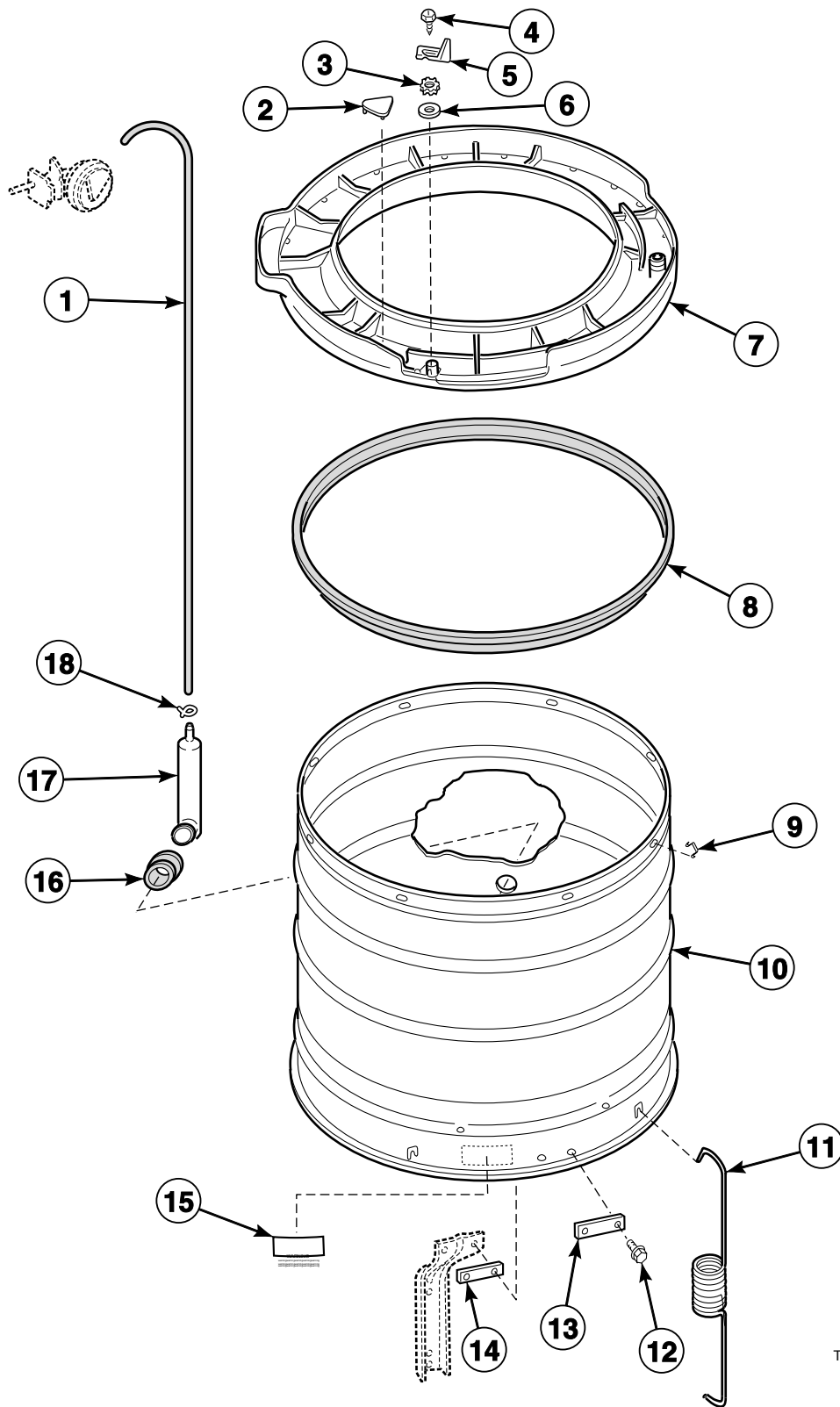
Lint Filter, Washtub and Hub



TLW1694P_200637

NA3511 P19

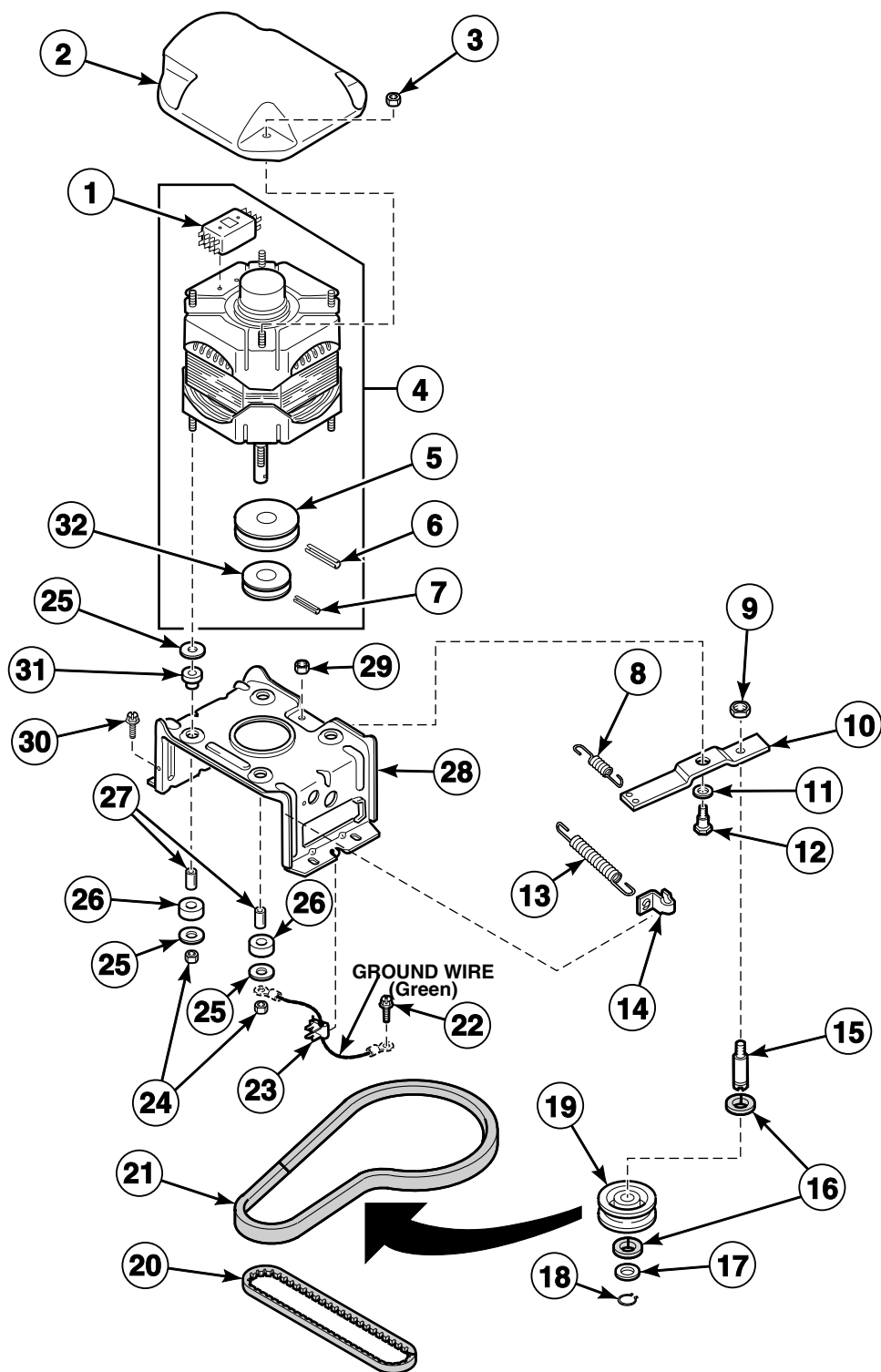
Outer Tub, Cover and Pressure Hose



TLW1695P_200637

NA3511 P20

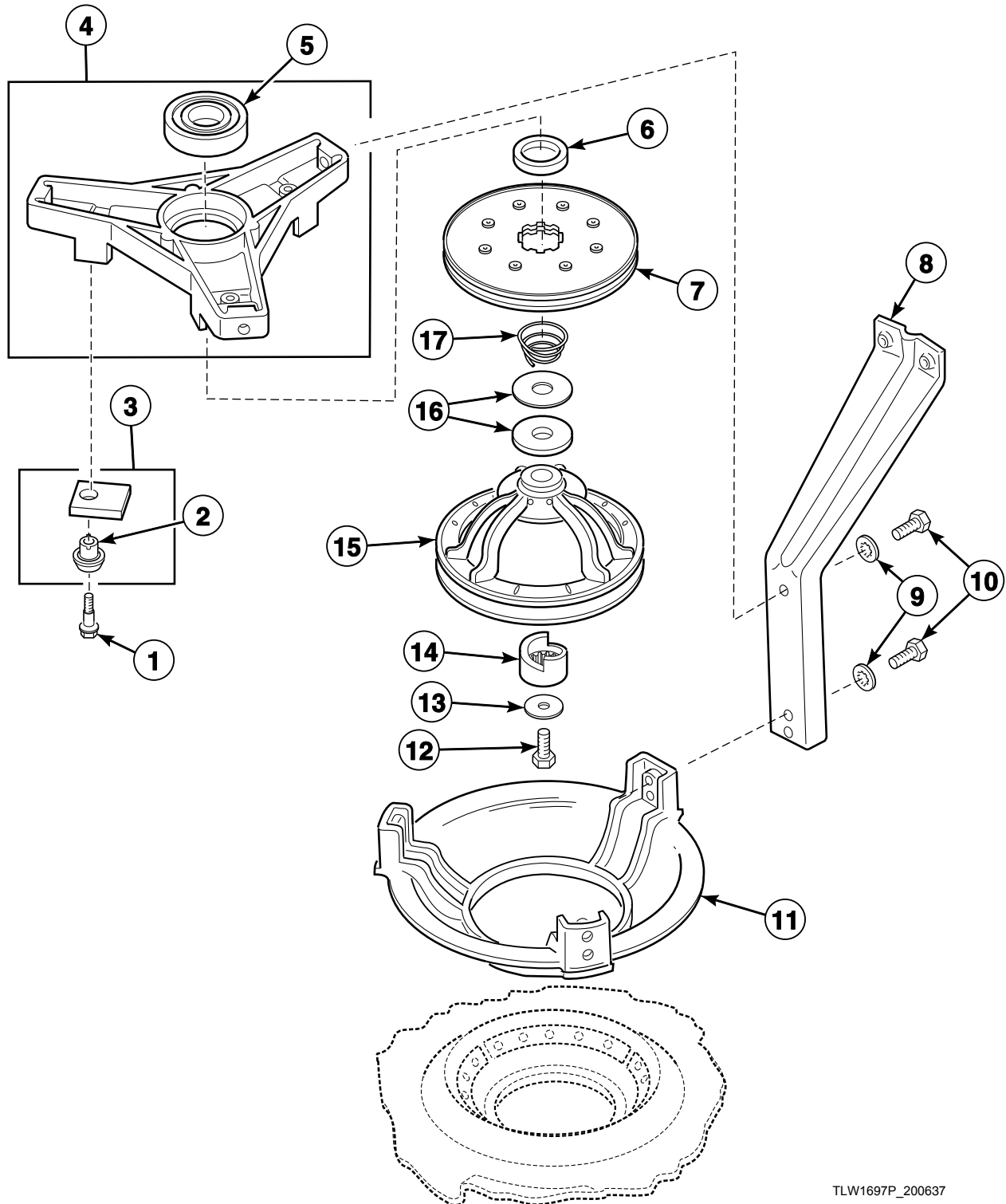
Motor, Mounting Bracket, Belts and Idler Assembly



W463P_200637

NA3511 P21

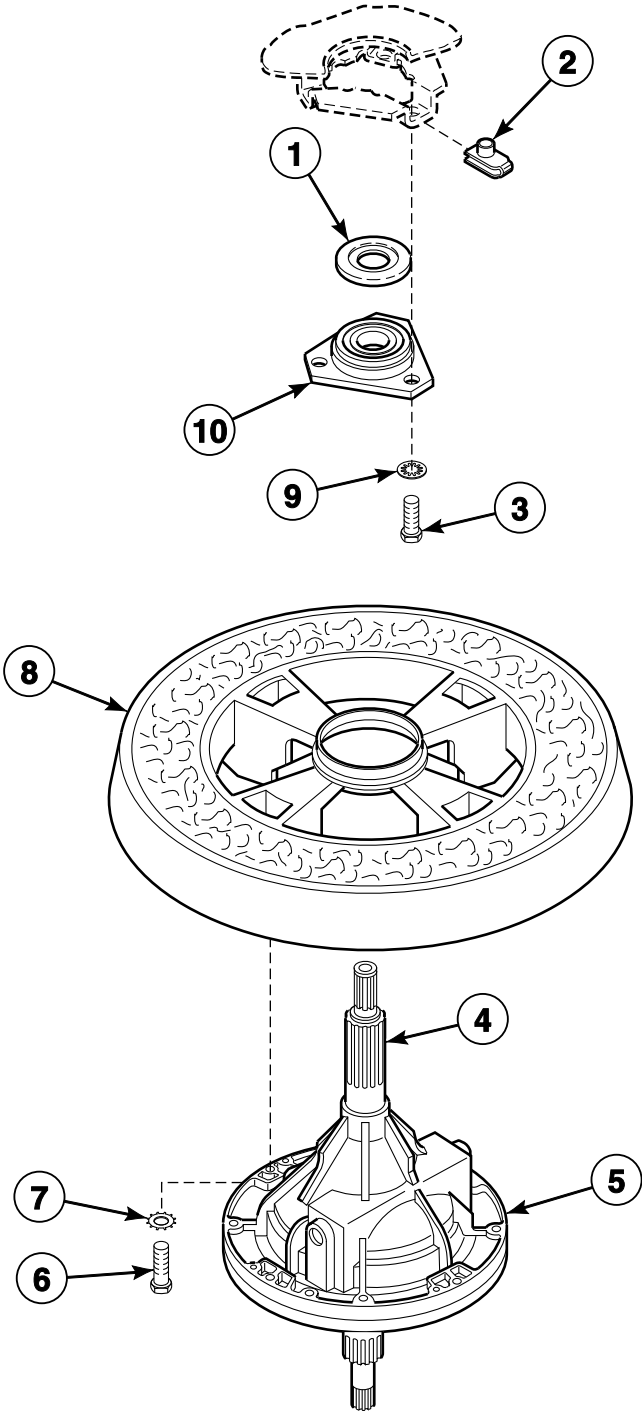
Bearing Housing, Brake, Pulley and Pivot Dome



TLW1697P_200637

NA3511 P22

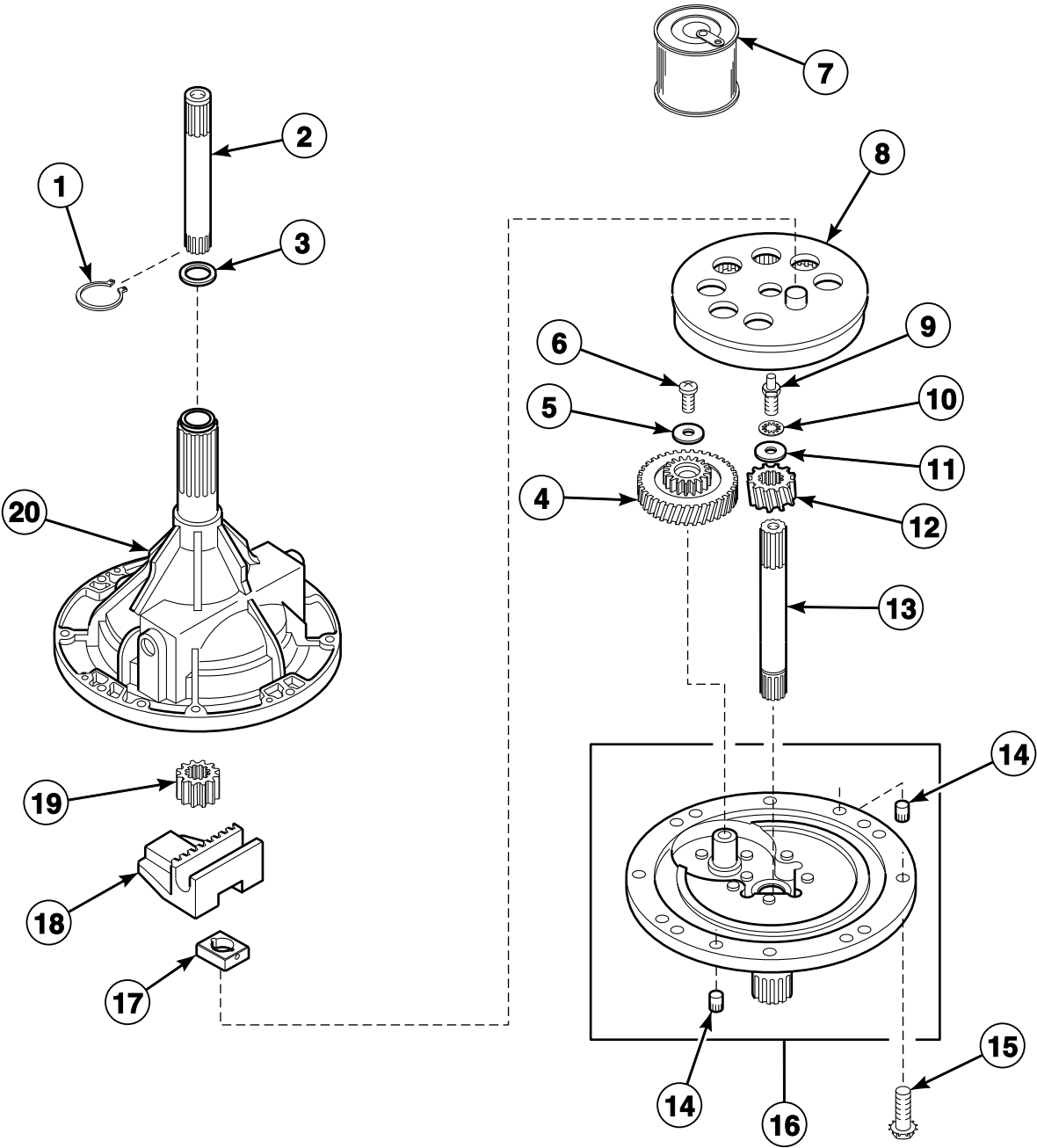
Transmission Assembly and Balance Ring



TLW1698P_200637

NA3511 P23

Components for 33227P Transmission Assembly

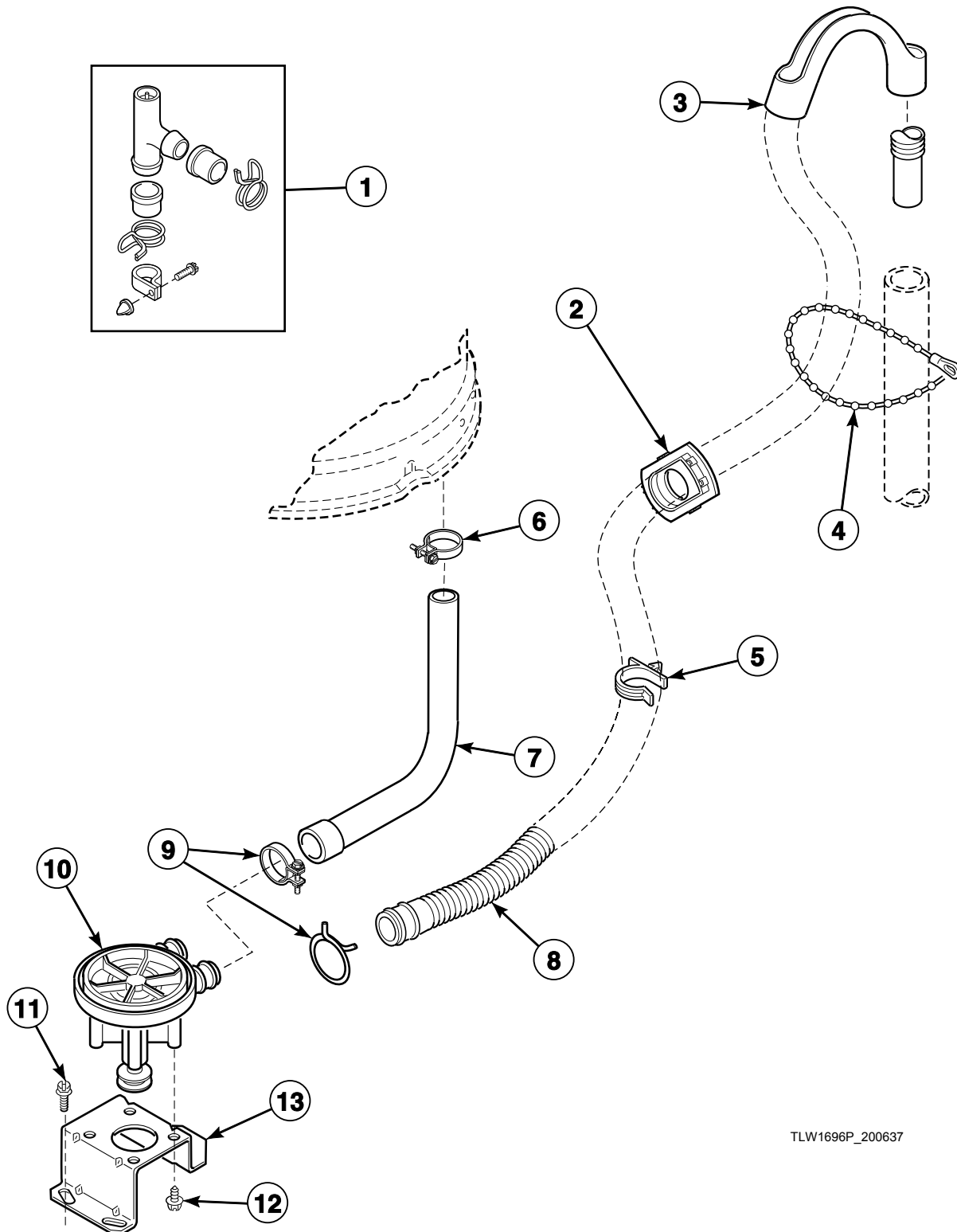


W157P_200637

NA3511 P24

Pump Assembly, Bracket, Hoses and Siphon Break Kit (Drawing 1 of 2)

Model NA2110 Starting Serial No. R612440YK

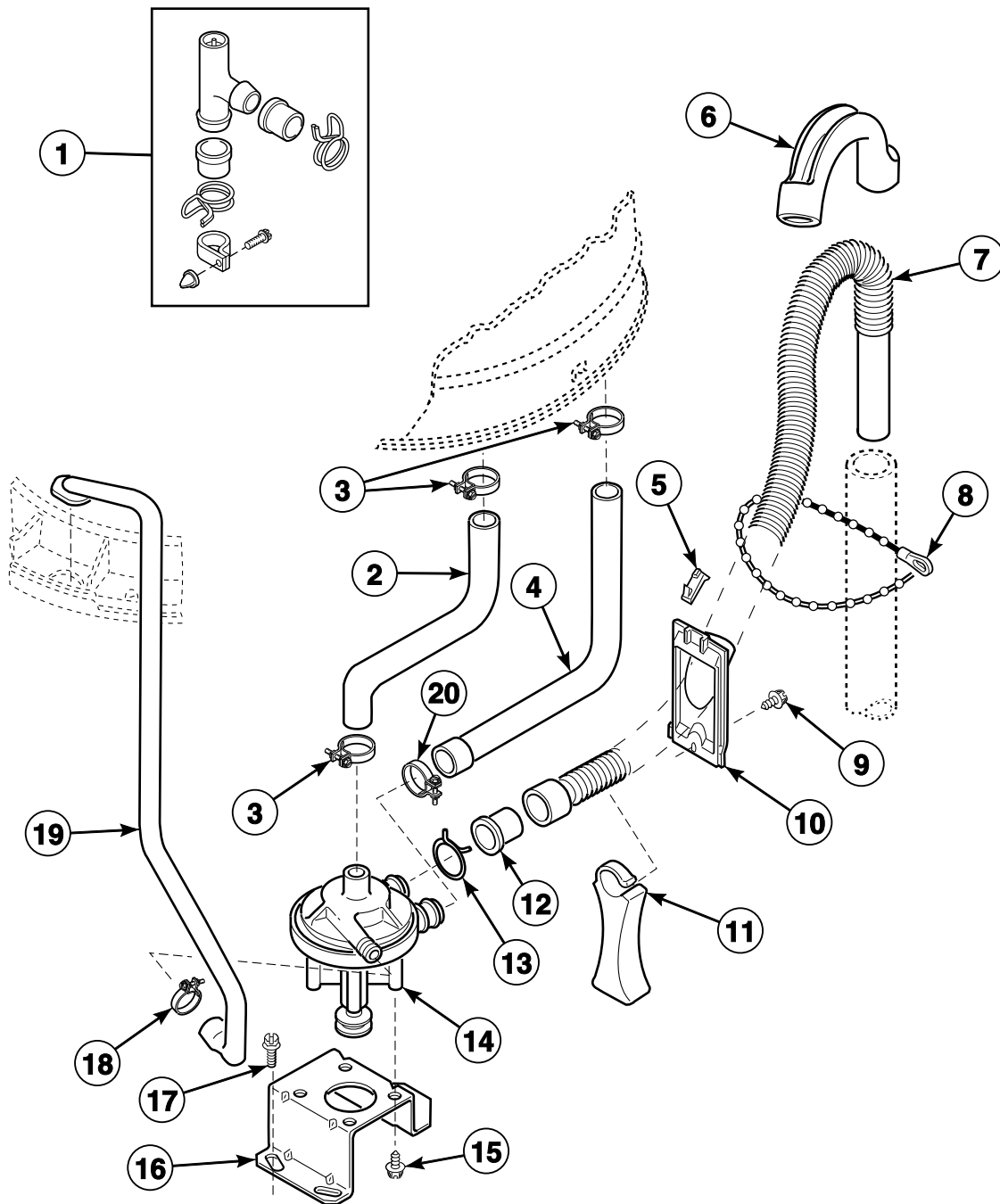


TLW1696P_200637

NA3511 P25

Pump Assembly, Bracket, Hoses and Siphon Break Kit (Drawing 2 of 2)

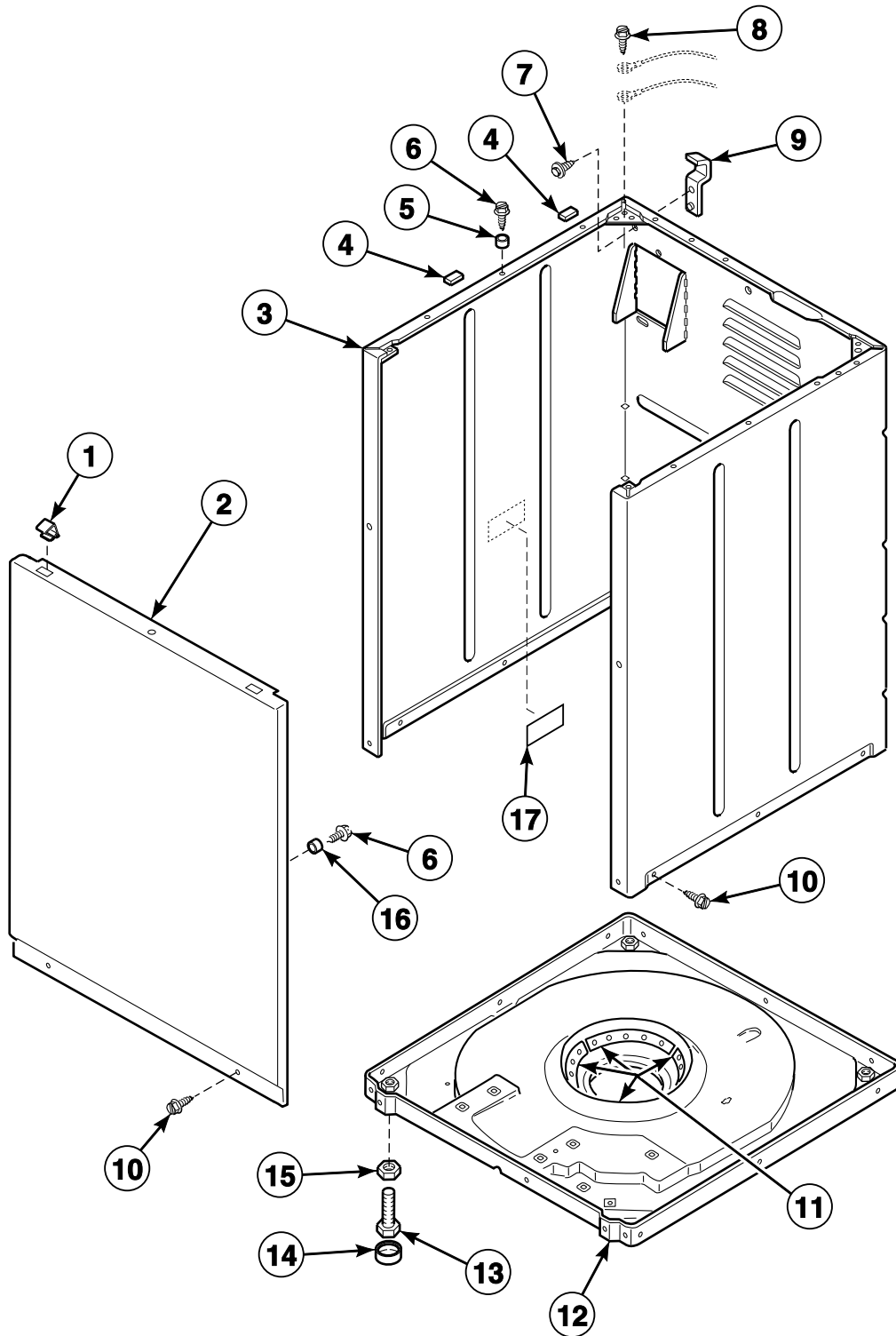
All Models Except NA2110 Starting Serial No. R1624440YK



TLW1699P_200637

NA3511 P26

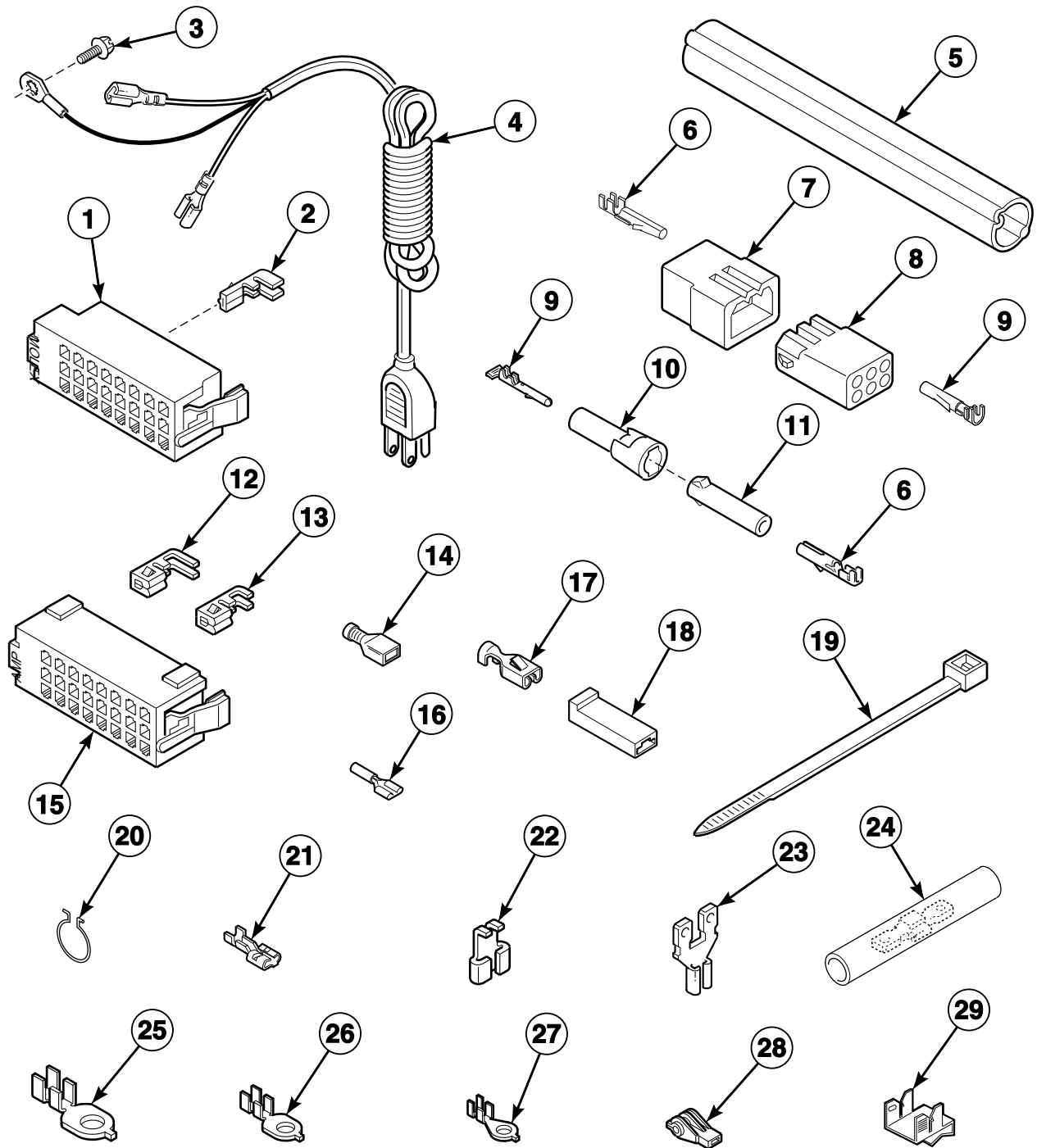
Front Panel, Cabinet and Base



TLW1700P_200637

NA3511 P27

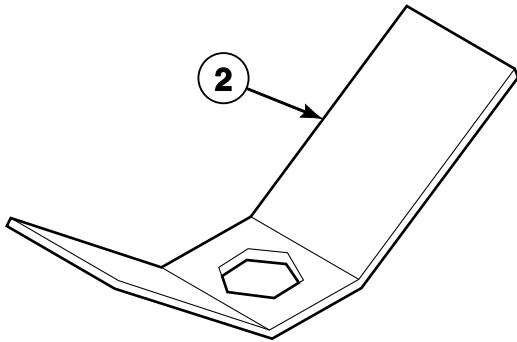
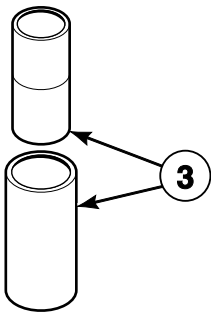
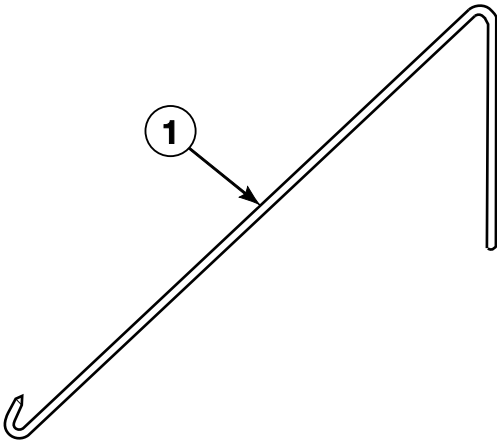
Power Cord and Wire Terminals



TLW1701P_200637

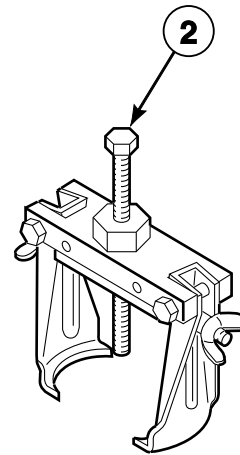
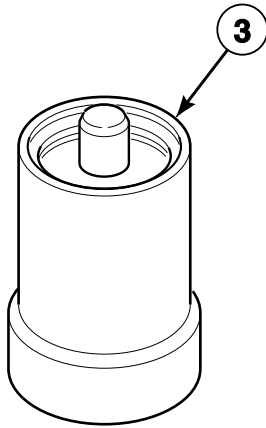
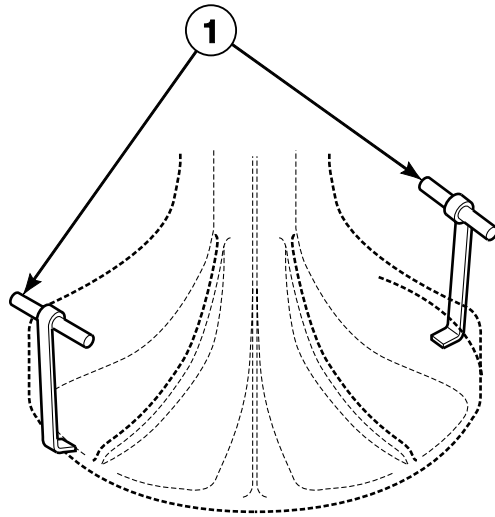
NA3511 P28

Special Tools (Drawing 1 of 2)



TLW1702P_200637

Special Tools (Drawing 2 of 2)



TLW1703P_200637

NA3511 P30