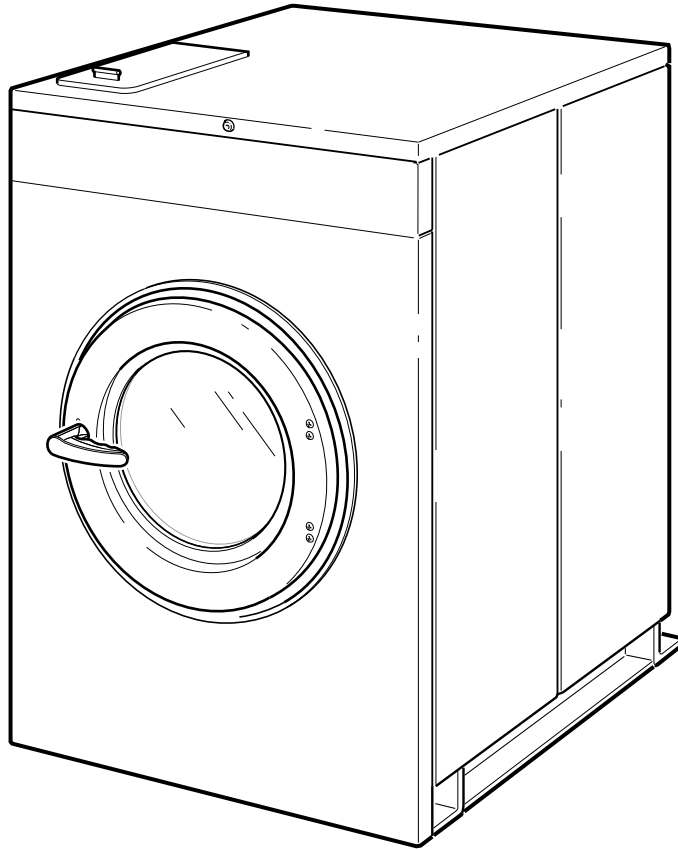


Washer-Extractor

Cabinet Hardmount **SCL 1**



CHM1772C_F8330701

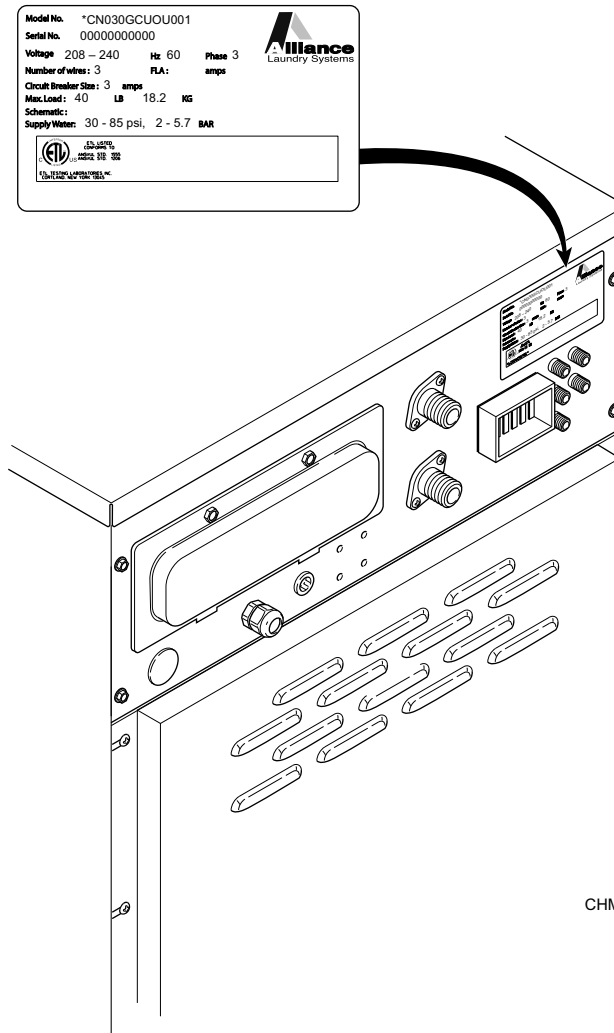
Parts Ordering Information

If literature or replacement parts are required, contact the source from whom the machine was purchased or contact Alliance Laundry Systems at (920) 748-3950 for the name and address of the nearest authorized parts distributor.

For technical assistance, call either of the numbers listed below:

Nameplate Location

When calling or writing about your product, be sure to mention model and serial numbers. Model and serial numbers are located on nameplate(s) as shown.



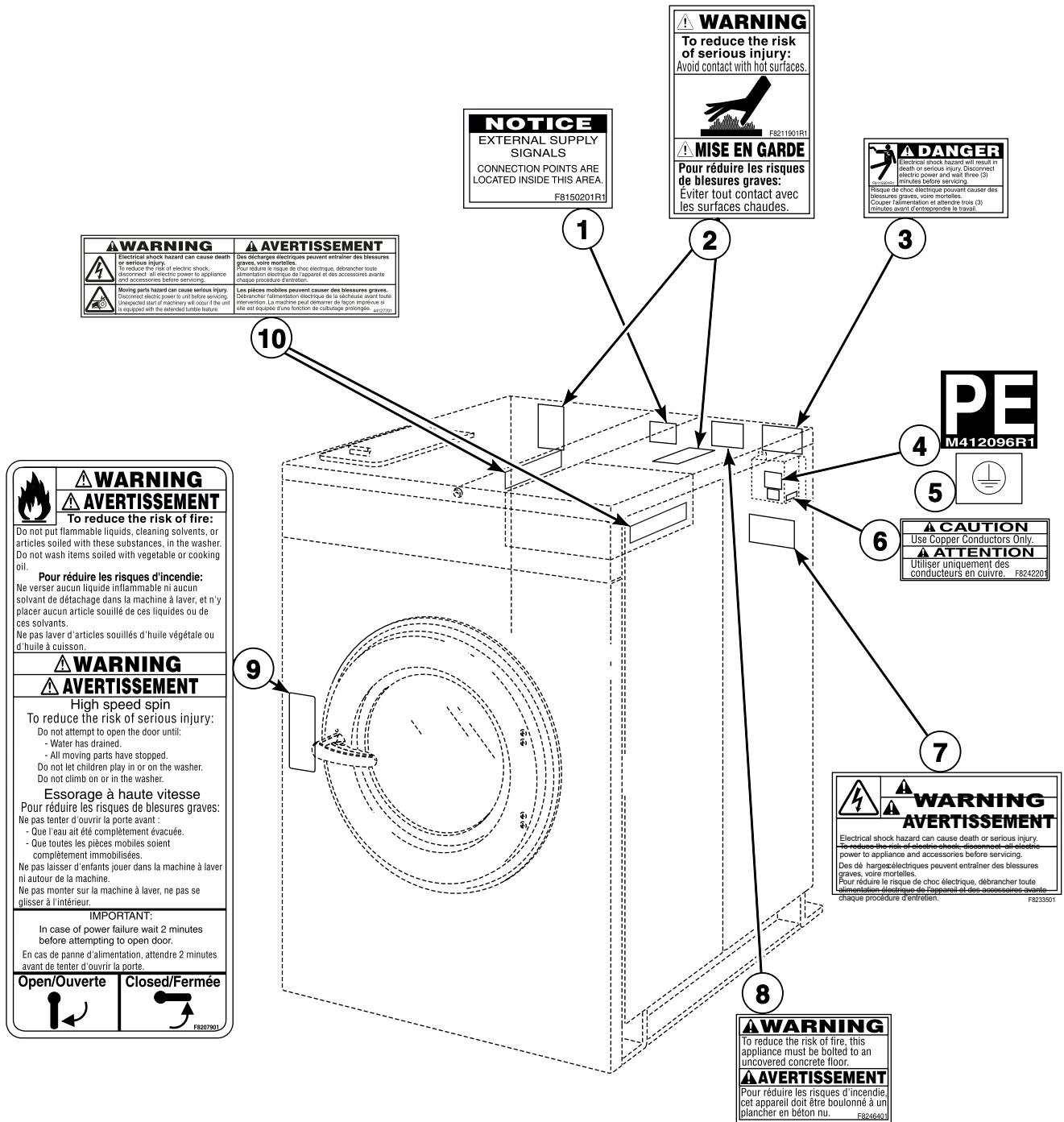
CHM3025P_F8330701

Model Identification

Information in this manual is applicable to these washer-extractor models:

HCL020HDF	HCN030HC2	HCU020HC2	SCL020HN2	UCL020HN2
HCL020HN2	HCN030HCF	HCU020HL2	SCL020HNF	UCL020HNF
HCL020HNF	HCN030HD2	HCU020HN2	SCL020HNV	UCL020HNV
HCL020HNV	HCN030HDF	HCU020HNF	SCL030HN2	UCL030HN2
HCL030HDF	HCN030HEF	HCU020HNV	SCL030HNF	UCL030HNF
HCL030HE2	HCN030HN2	HCU020HX2	SCL030HNV	UCL030HNV
HCL030HEF	HCN030HNF	HCU030HC2	SCL040HN2	UCL040HN2
HCL030HLF	HCN030HNV	HCU030HE2	SCL040HNF	UCL040HNF
HCL030HN2	HCN030HXF	HCU030HL2	SCL040HNV	UCL040HNV
HCL030HNF	HCN030HY2	HCU030HLF	SCL060HN2	UCL060HN2
HCL030HNV	HCN030HYF	HCU030HN2	SCL060HNF	UCL060HNF
HCL040HC2	HCN040HC2	HCU030HNF	SCL060HNV	UCL060HNV
HCL040HCF	HCN040HCF	HCU030HNV	SCN020HN2	UCN020HN2
HCL040HDF	HCN040HD2	HCU030HX2	SCN020HNF	UCN020HNF
HCL040HE2	HCN040HDF	HCU040HC2	SCN020HNV	UCN020HNV
HCL040HEF	HCN040HEF	HCU040HN2	SCN030HN2	UCN030HN2
HCL040HN2	HCN040HN2	HCU040HNF	SCN030HNF	UCN030HNF
HCL040HNF	HCN040HNF	HCU040HNV	SCN030HNV	UCN030HNV
HCL040HNV	HCN040HNV	HCU040HX2	SCN040HN2	UCN040HN2
HCL060HC2	HCN040HXF	HCU060HC2	SCN040HNF	UCN040HNF
HCL060HCF	HCN040HY2	HCU060HL2	SCN040HNV	UCN040HNV
HCL060HDF	HCN040HYF	HCU060HN2	SCN060HN2	UCN060HN2
HCL060HN2	HCN060HC2	HCU060HNF	SCN060HNF	UCN060HNF
HCL060HNF	HCN060HCF	HCU060HNV	SCN060HNV	UCN060HNV
HCL060HNV	HCN060HDF	HCU060HX2	SCU020HN2	UCU020HN2
HCN020HC2	HCN060HEF	HCZ020HN2	SCU020HNF	UCU020HNF
HCN020HCF	HCN060HN2		SCU030HN2	UCU020HNV
HCN020HD2	HCN060HNF		SCU030HNF	UCU030HN2
HCN020HDF	HCN060HNV		SCU040HN2	UCU030HNF
HCN020HEF	HCN060HXF		SCU040HNF	UCU030HNV
HCN020HN2	HCN060HY2		SCU060HN2	UCU040HN2
HCN020HNF	HCN060HYF		SCU060HNF	UCU040HNF
HCN020HNV			SCU060HNV	UCU040HNV
HCN020HXF			SCZ020HN2	UCU060HN2
HCN020HY2				UCU060HNF
HCN020HYF				UCU060HNV
				UCZ030HN2

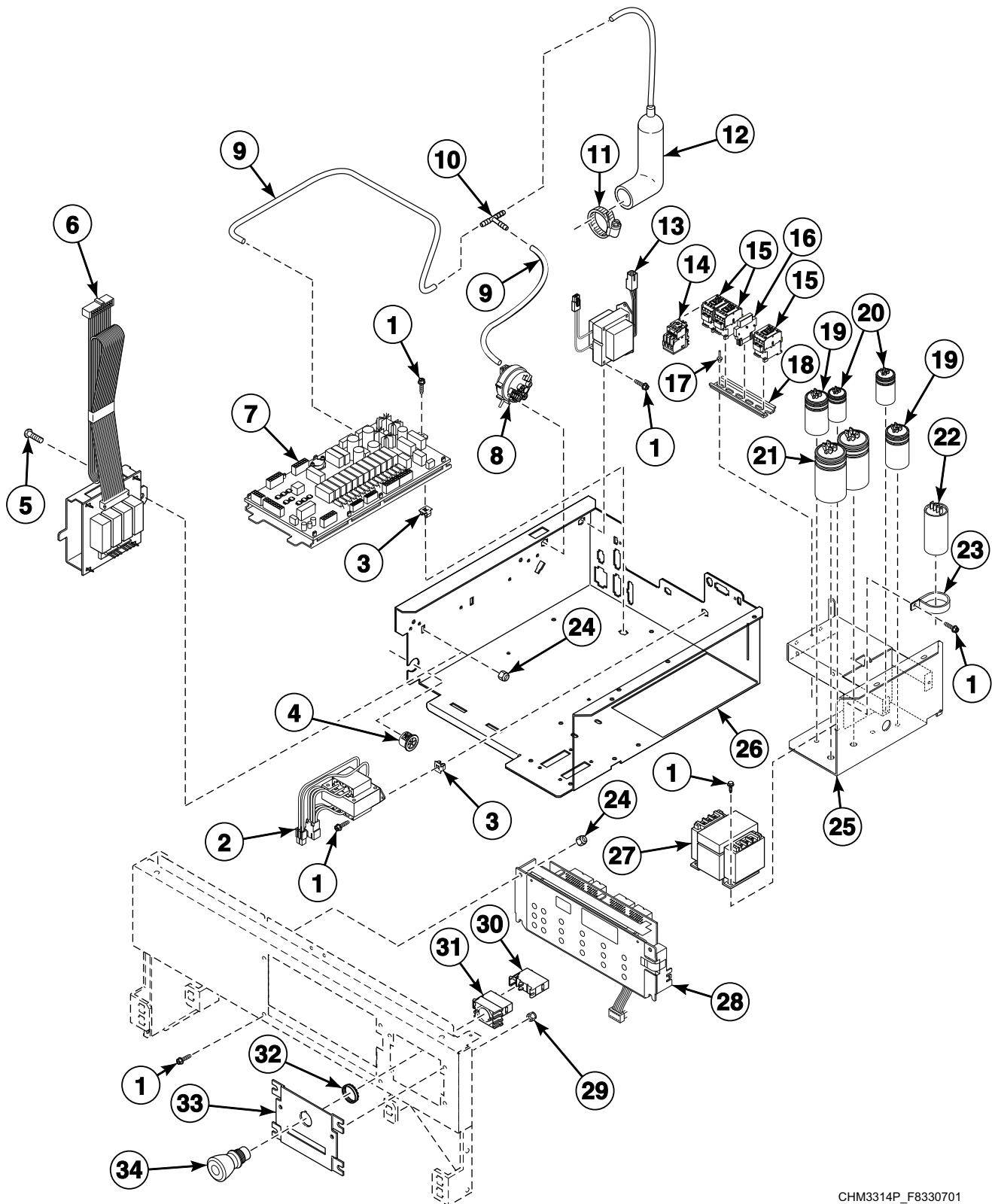
Decals



CHM3027P_F8330701

SCL 1 P1

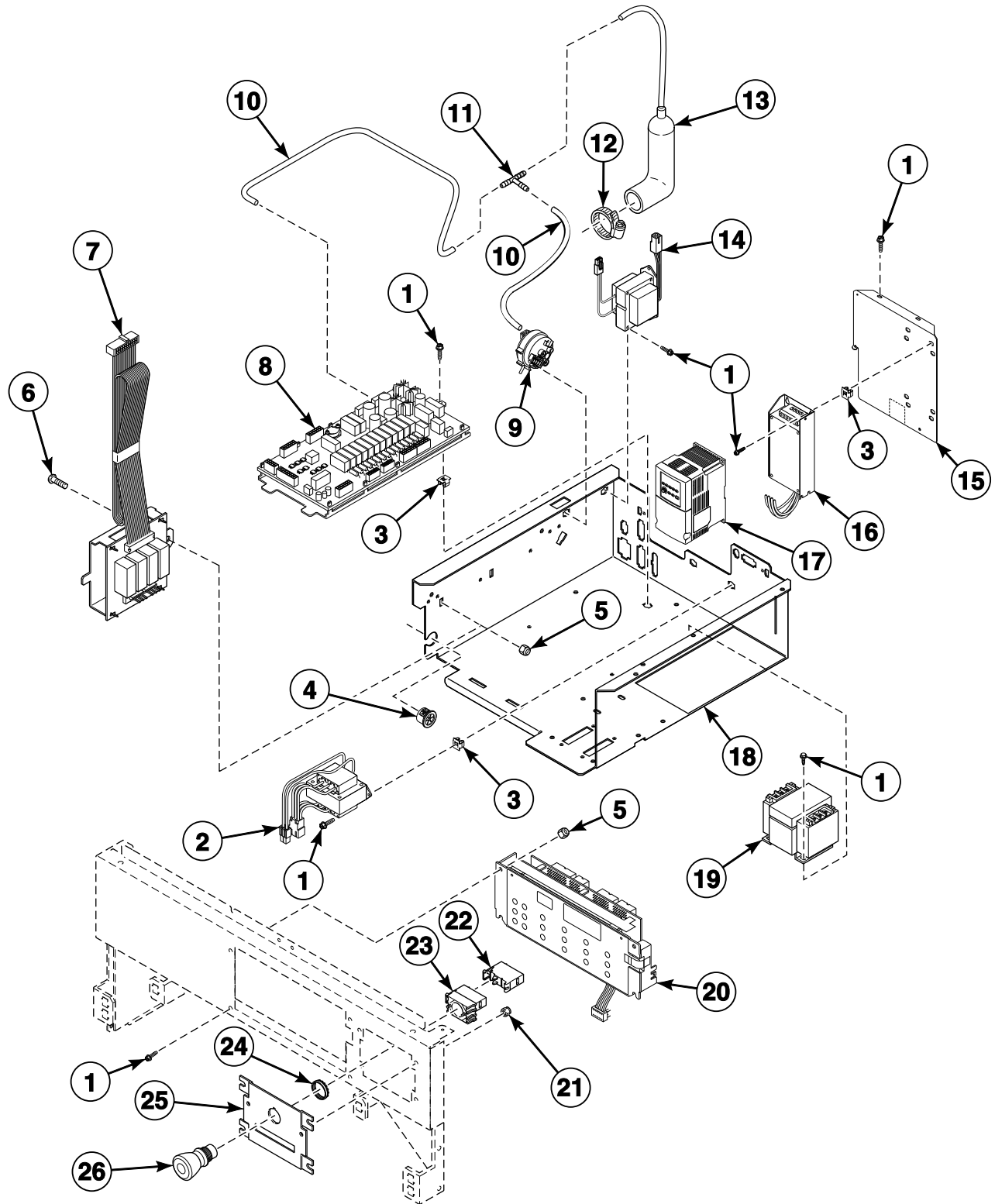
Control Module - 2 Speed OPL Models



CHM3314P_F8330701

SCL 1 P2

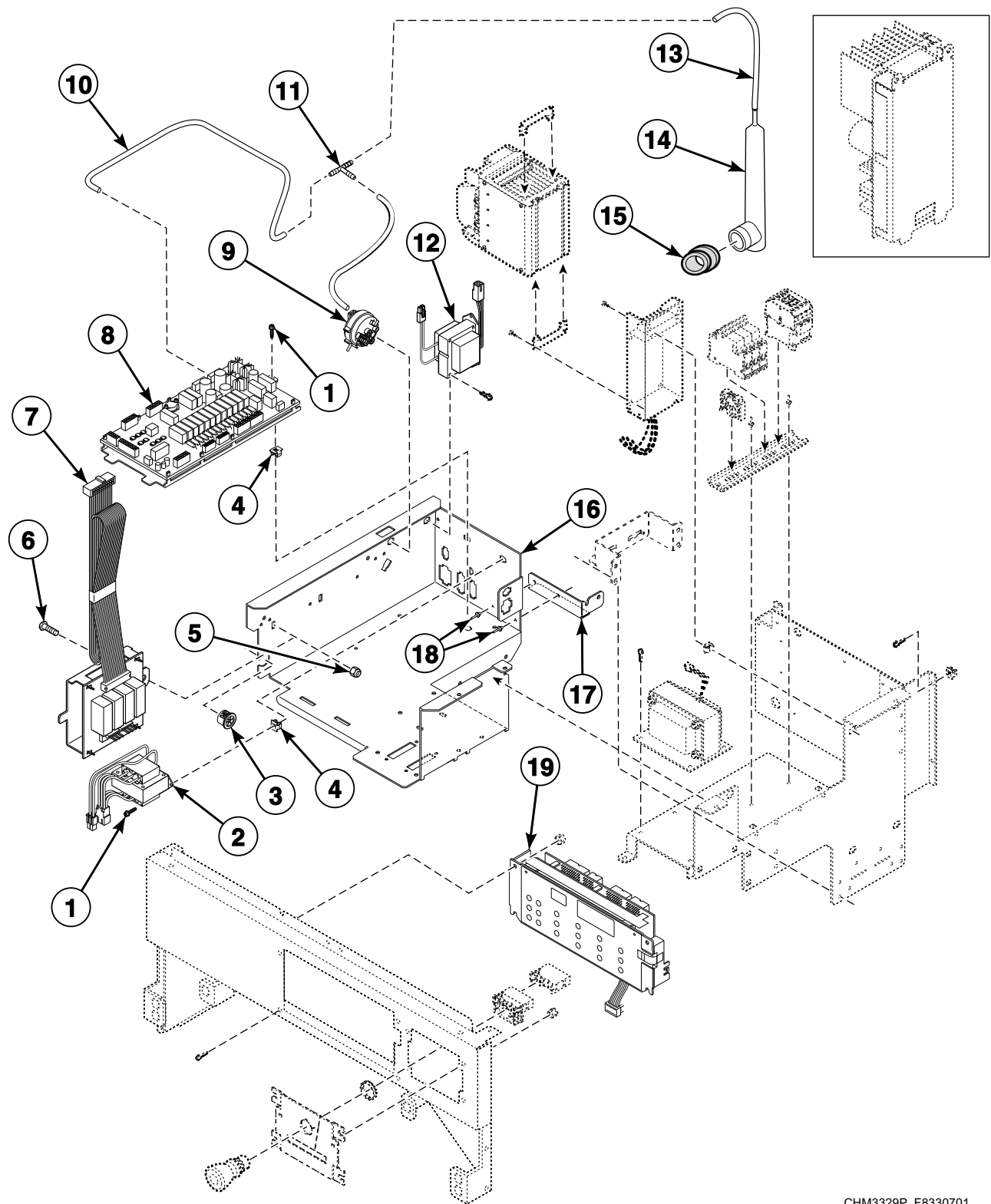
Control Module - F-Speed Design 1 OPL Models



CHM3321P_F8330701

SCL 1 P3

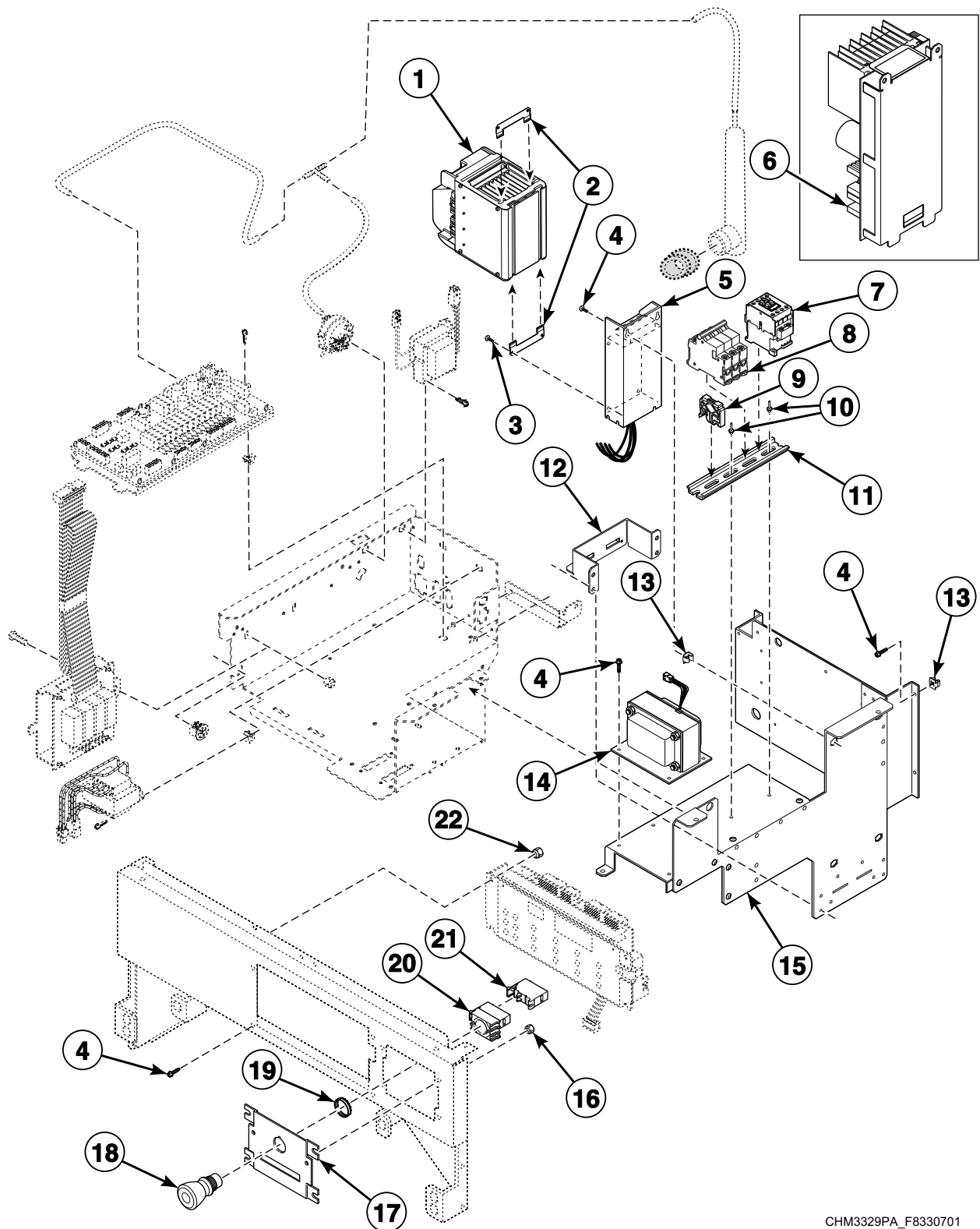
Control Module - F and V-Speed Design 2 and 3 OPL Models (Drawing 1 of 2)



CHM3329P_F8330701

SCL 1 P4

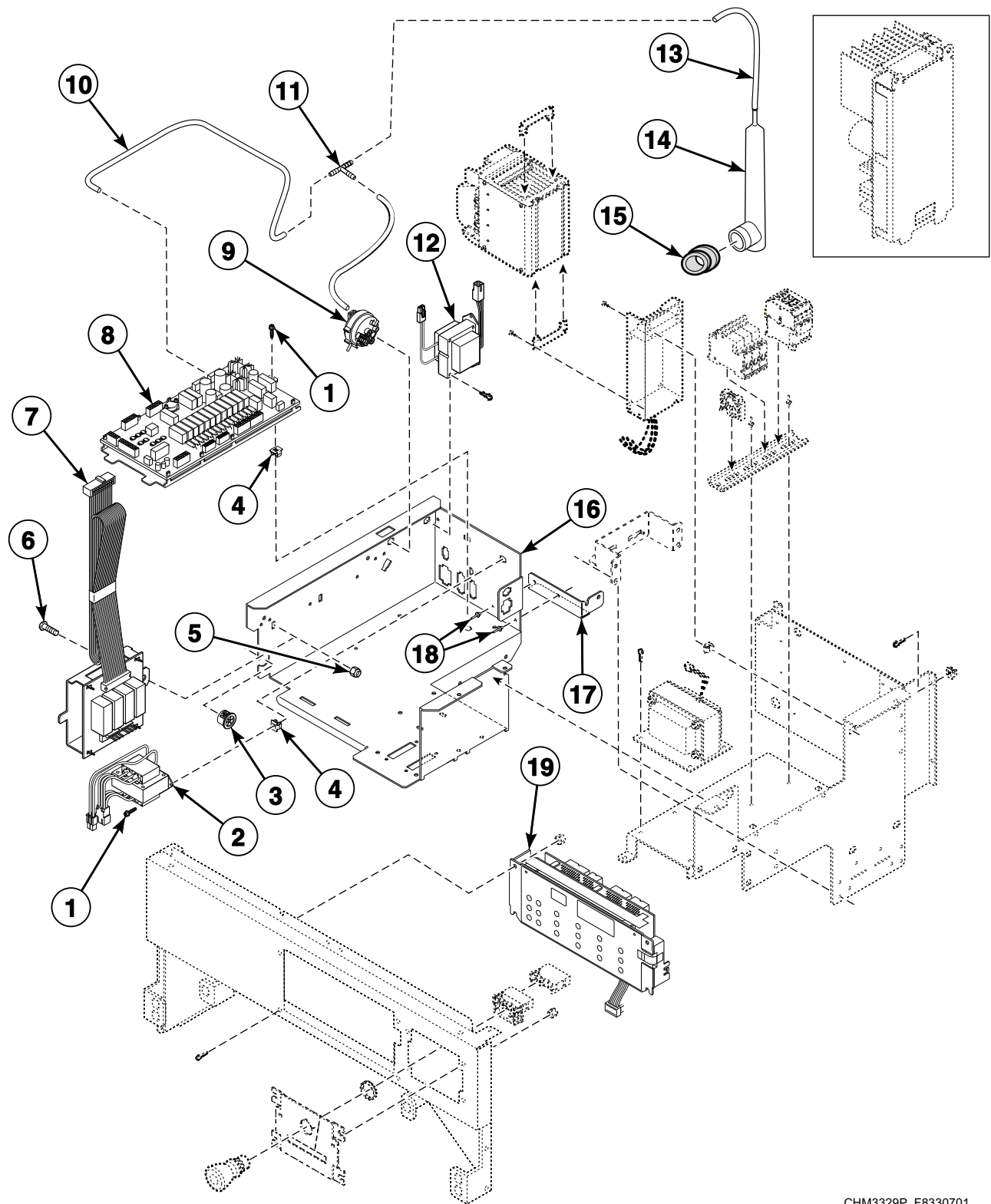
Control Module - F and V-Speed Design 2 and 3 OPL Models (Drawing 2 of 2)



CHM3329PA_F8330701

SCL 1 P5

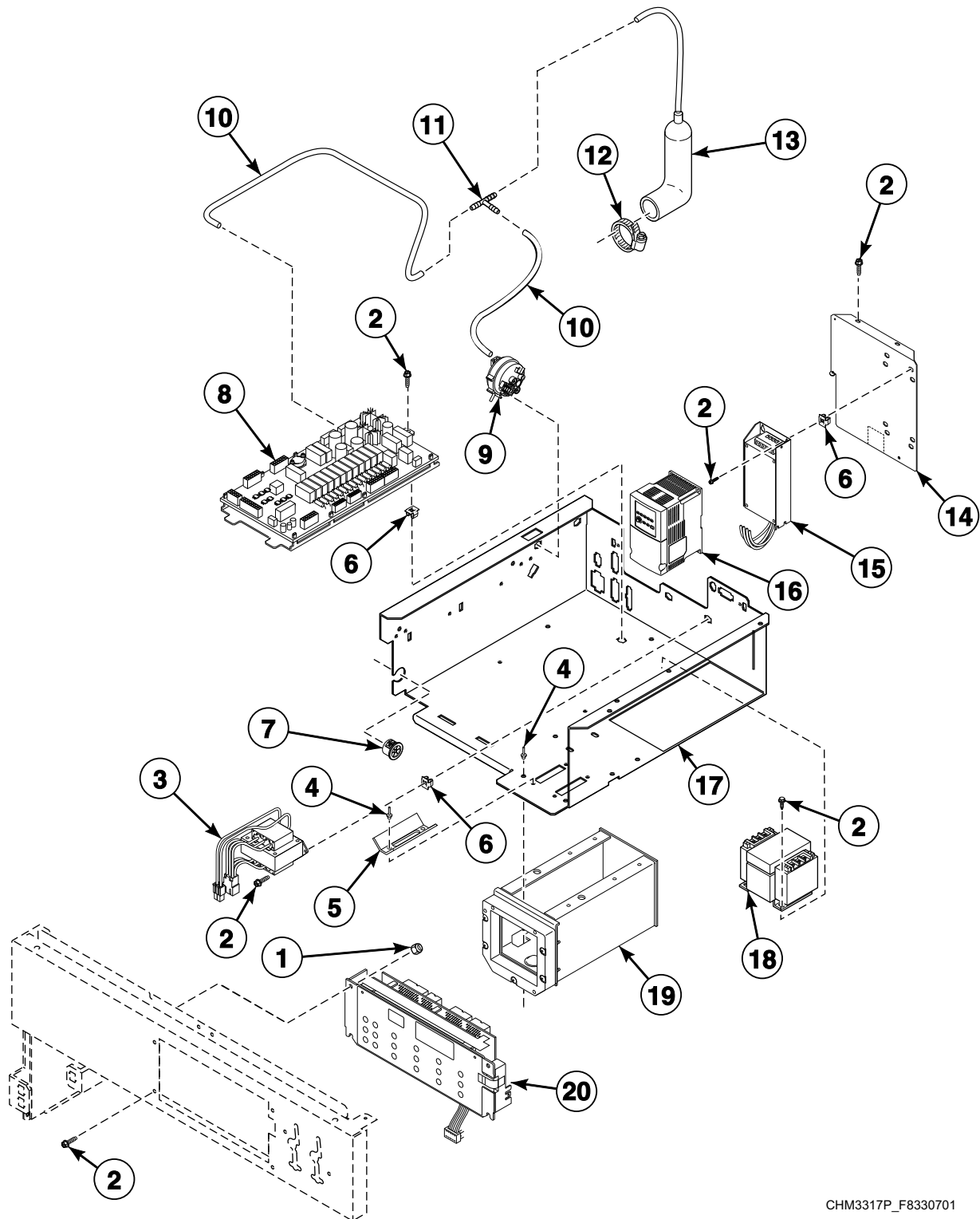
Control Module - F and V-Speed Design 2 and 3 OPL Models (Drawing 1 of 2)



CHM3329P_F8330701

SCL 1 P6

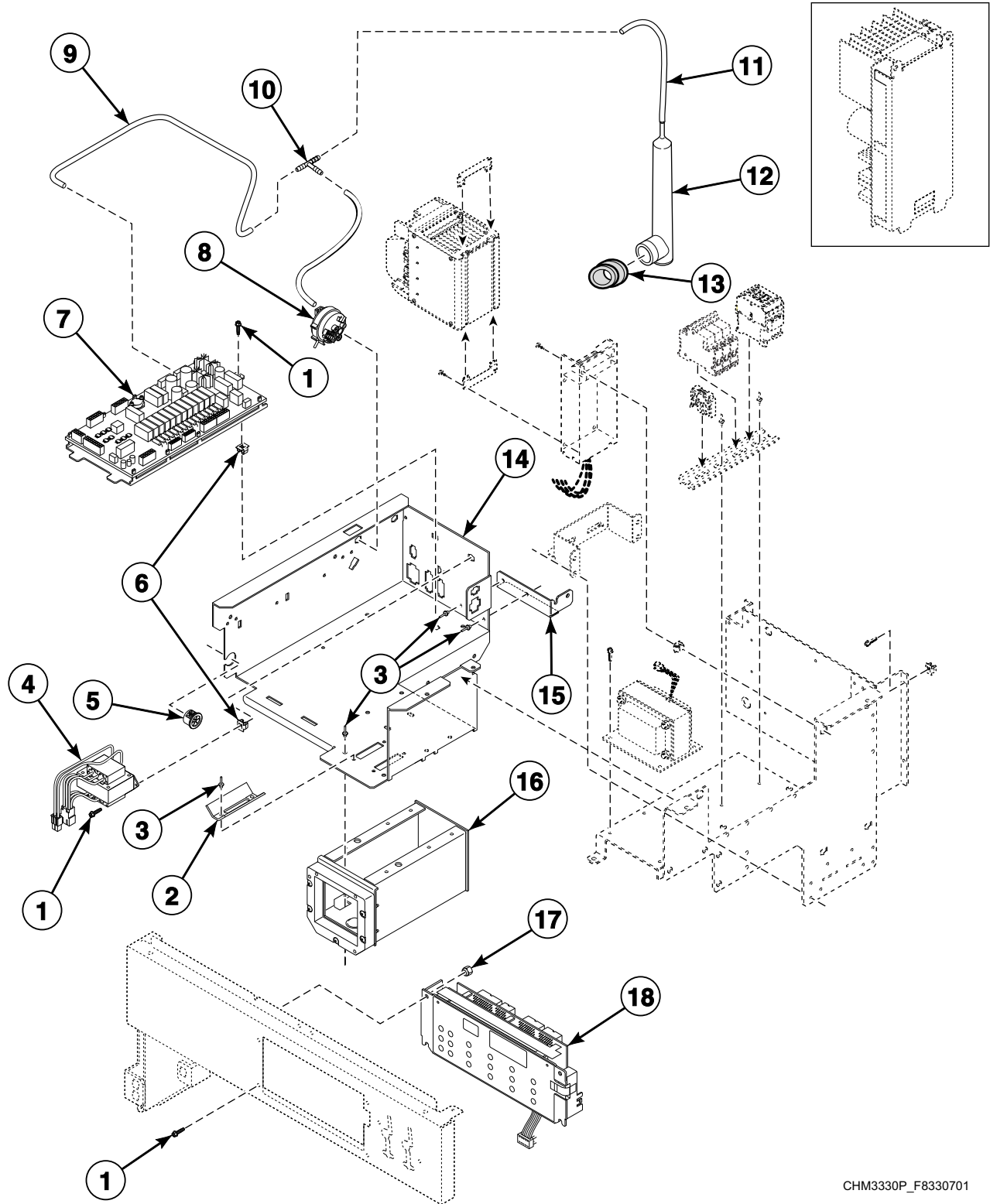
Control Module - F-Speed Design 1 Coin Models



CHM3317P_F8330701

SCL 1 P7

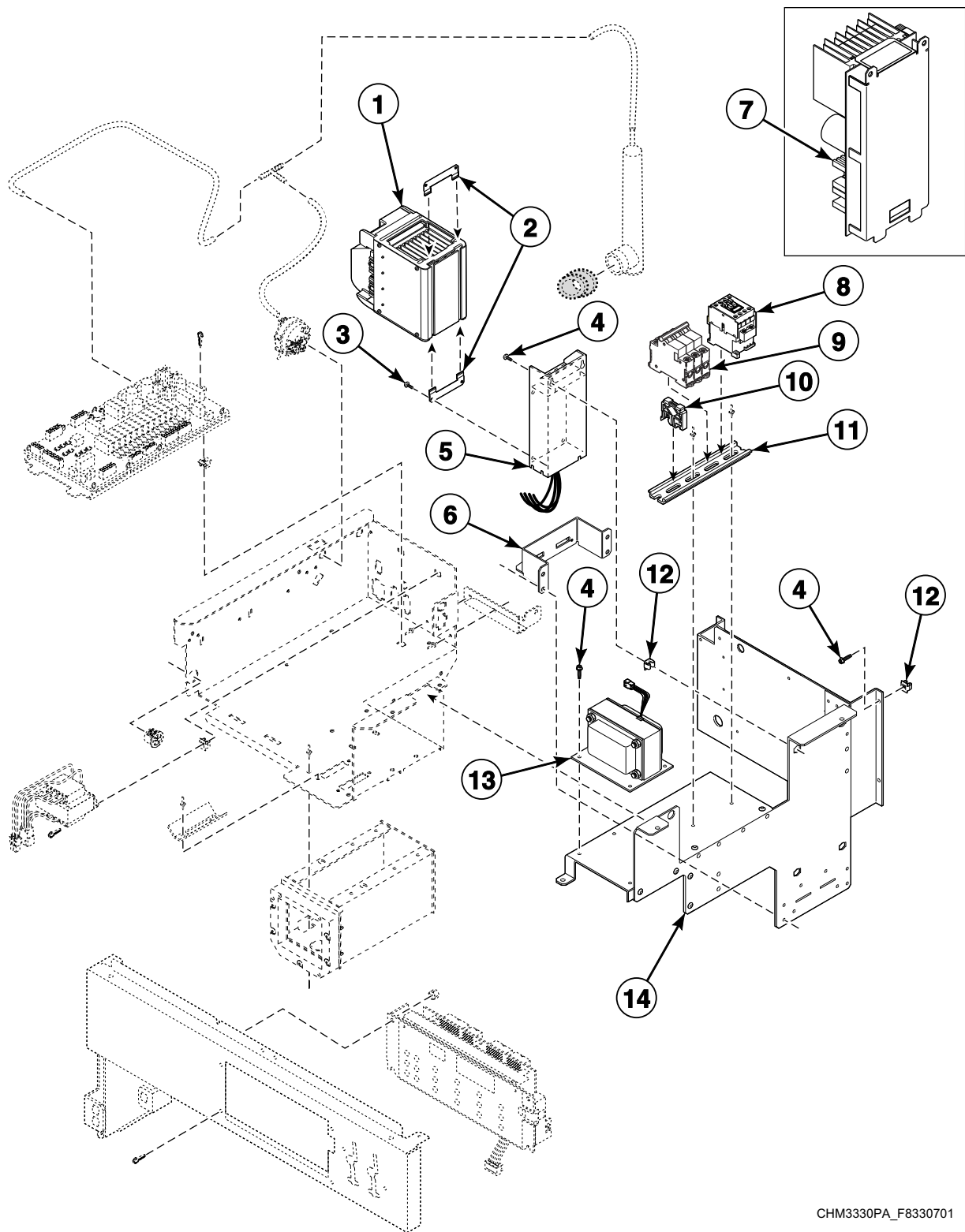
Control Module - F-Speed Design 2 and 3 Coin Models (Drawing 1 of 2)



CHM3330P_F8330701

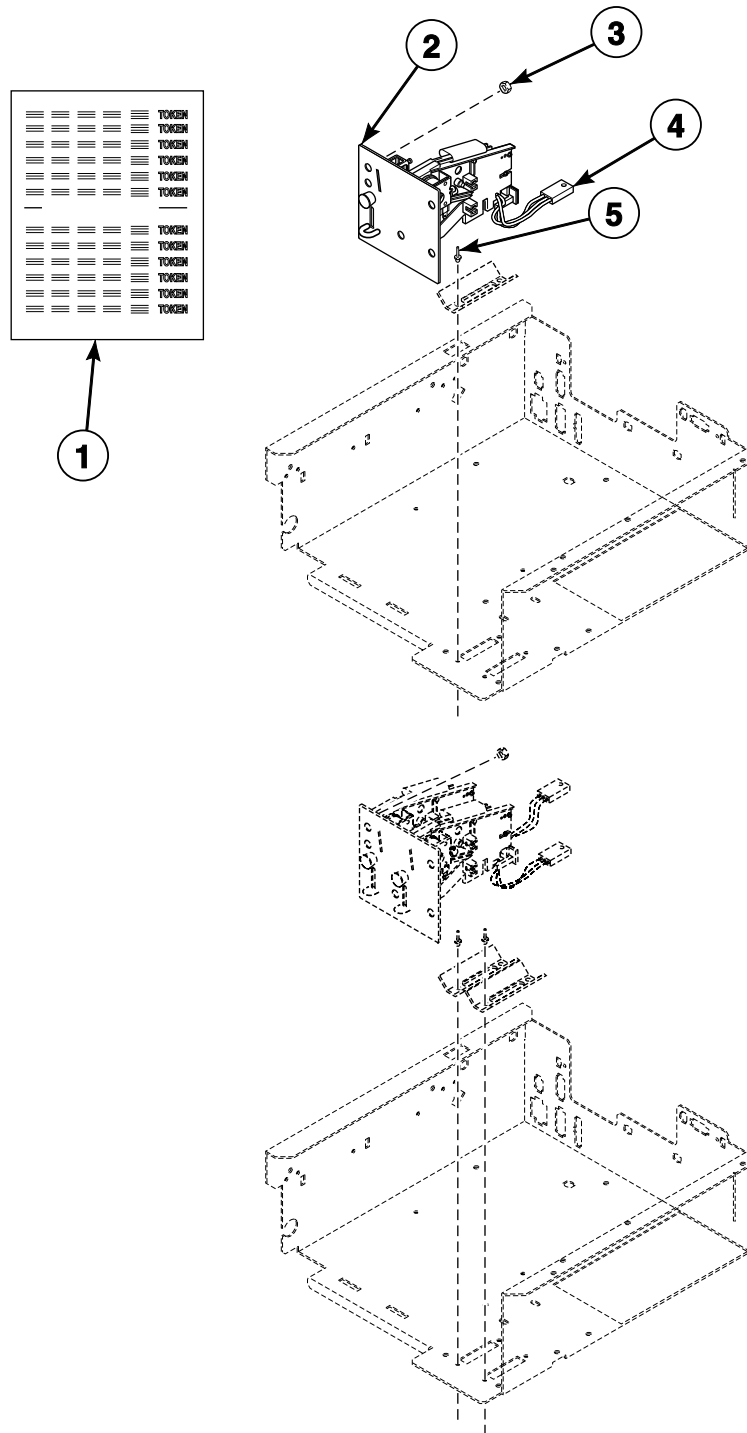
SCL 1 P8

Control Module - F-Speed Design 2 and 3 Coin Models (Drawing 2 of 2)



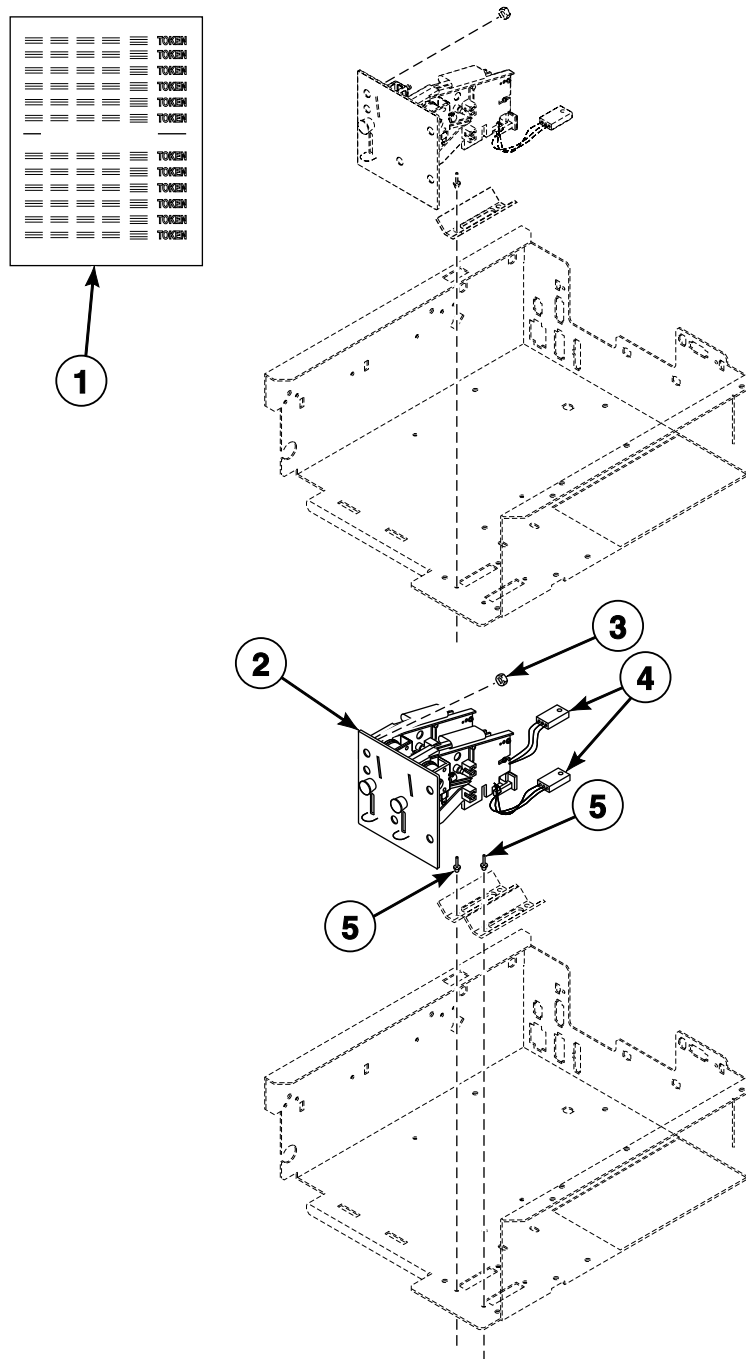
CHM3330PA_F8330701

Flush Mount Coin Meter Assembly - Single Drop



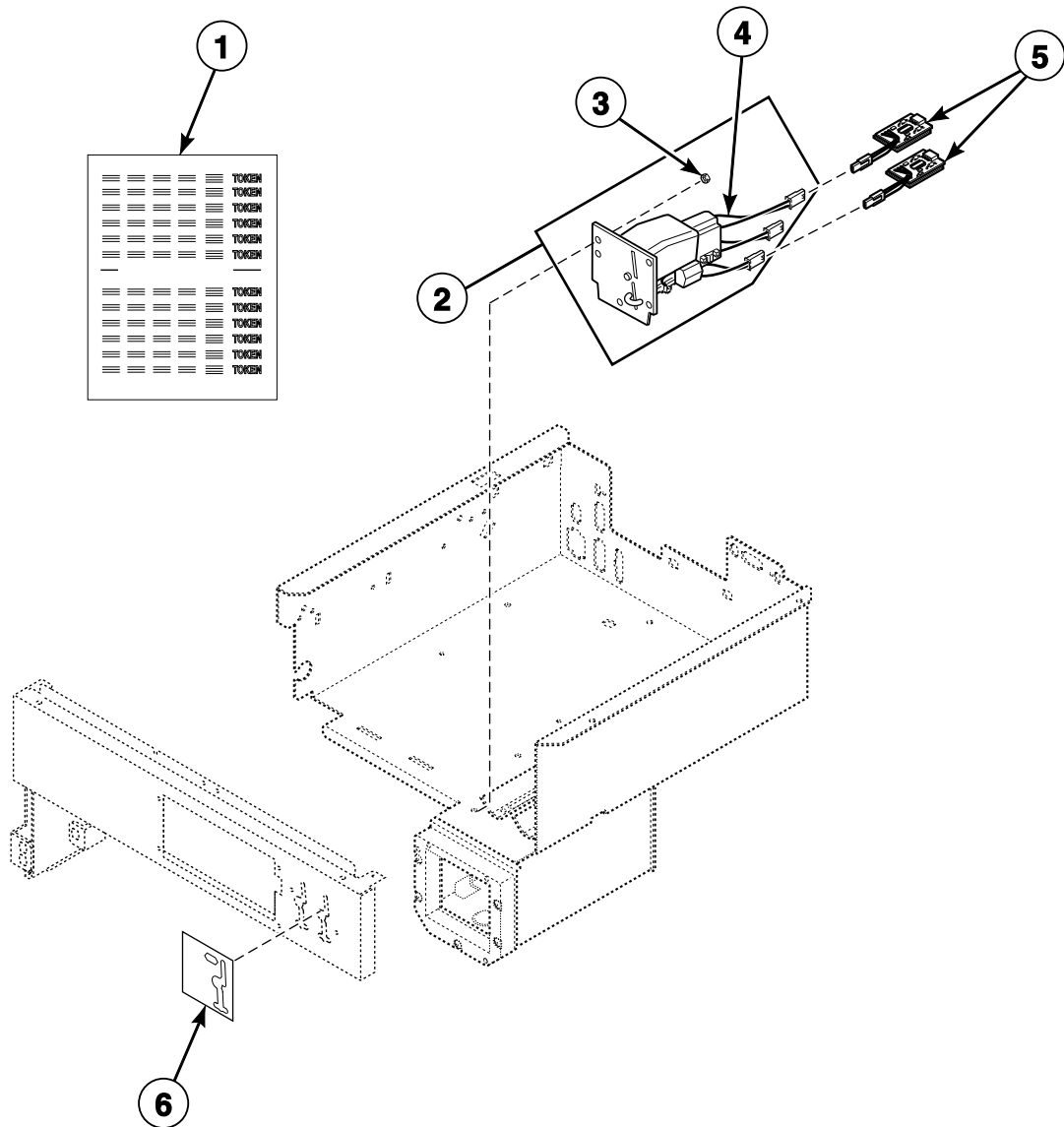
CHM3088P_F8330701

Flush Mount Coin Meter Assembly - Dual Drop



CHM3088PA_F8330701

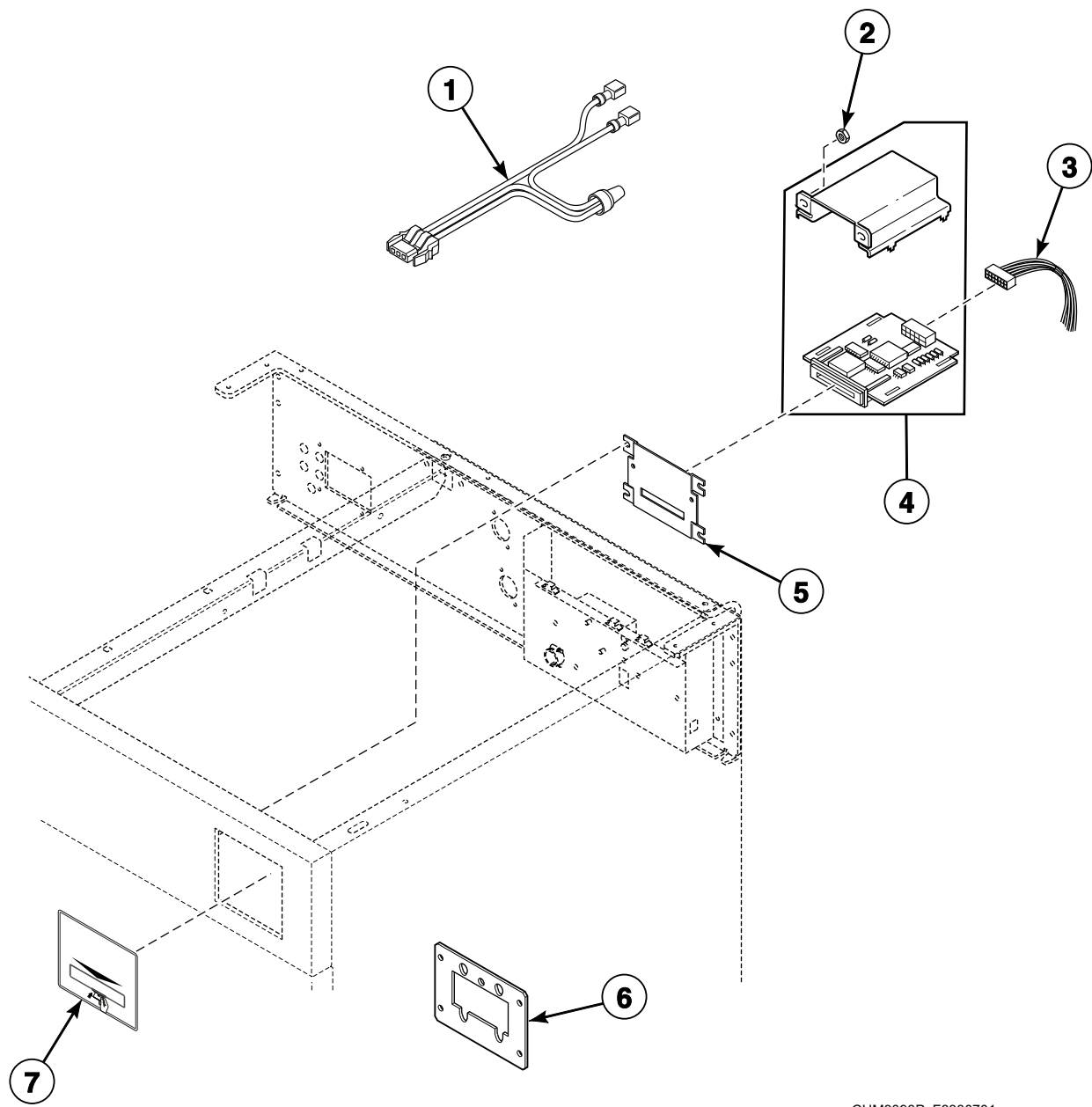
Electronic Coin Meter Assembly



CHM3089P_F8330701

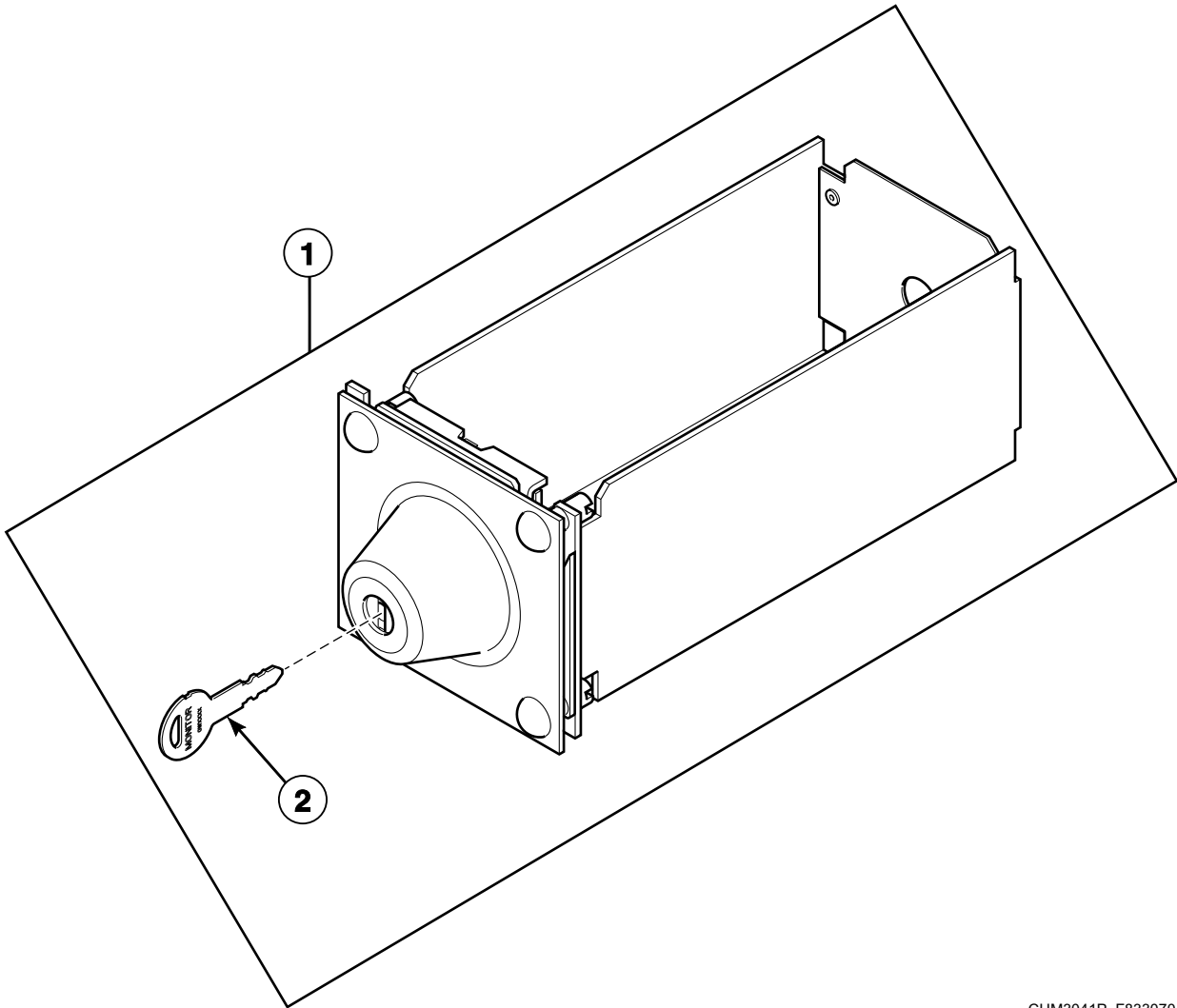
SCL 1 P12

Card Reader - HY Models



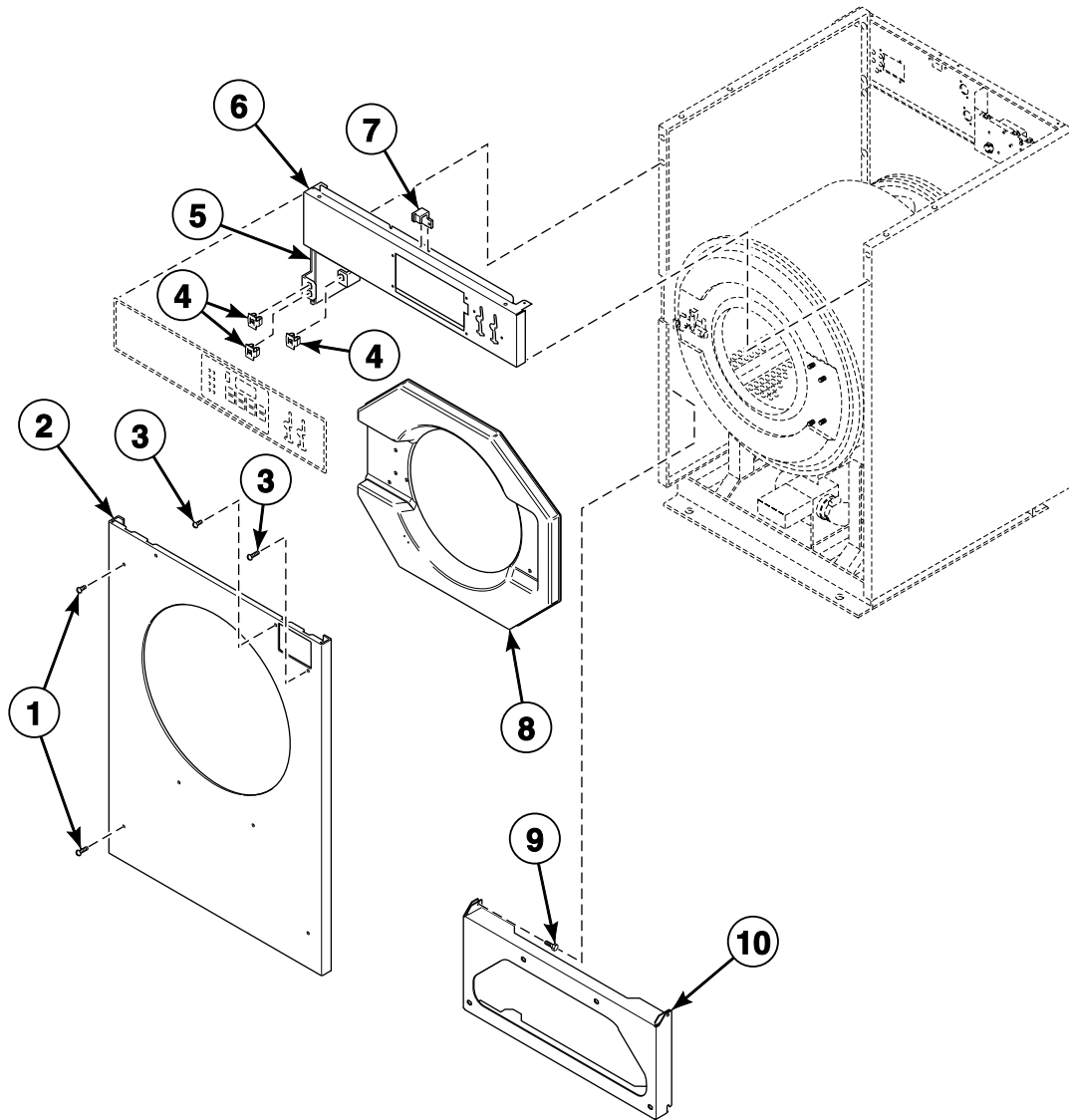
CHM3093P_F8330701

Optional Coin Box



CHM3041P_F8330701

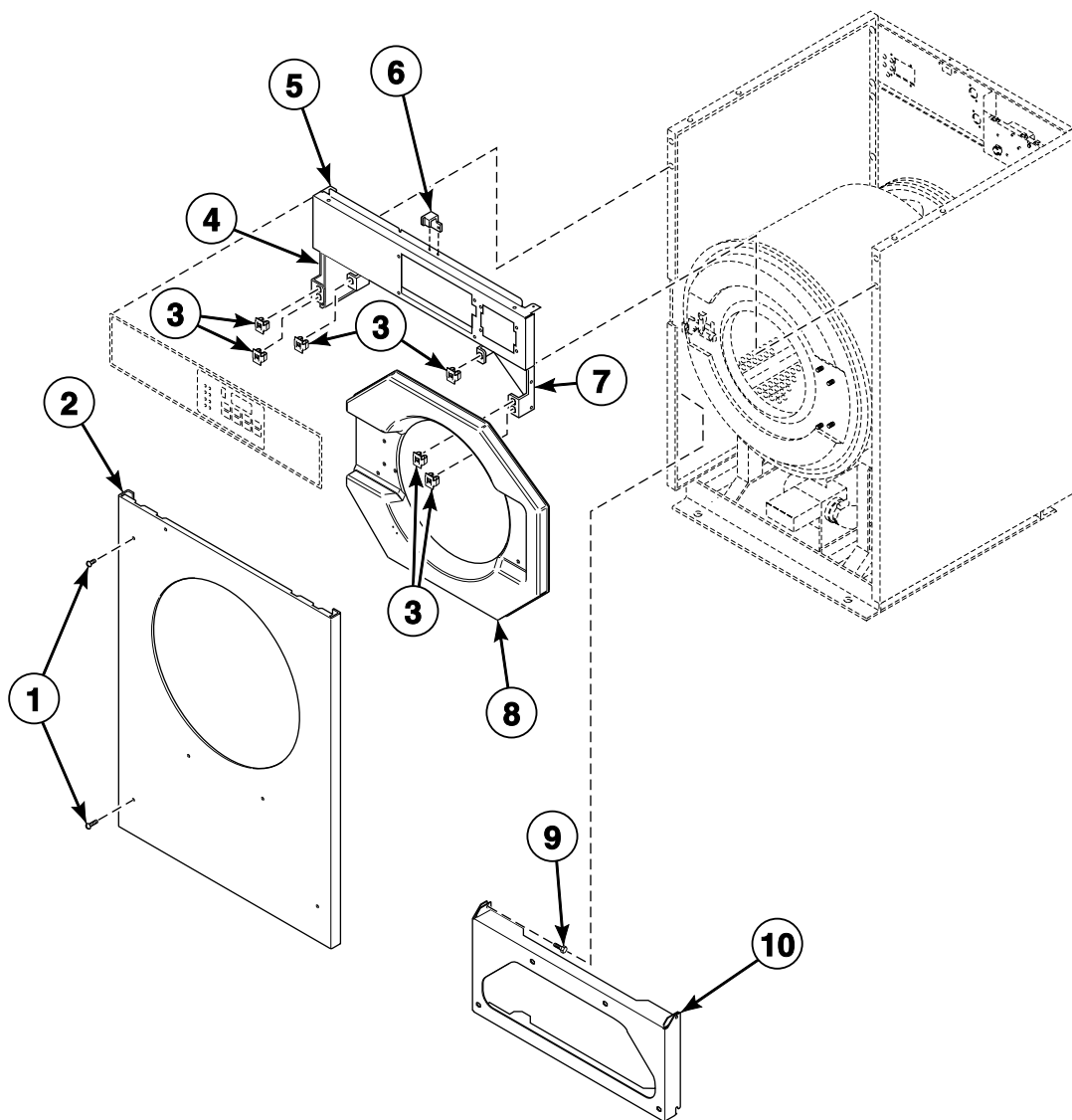
Front Panels and Control Panel - Coin Models



CHM3196P_F8330701

SCL 1 P15

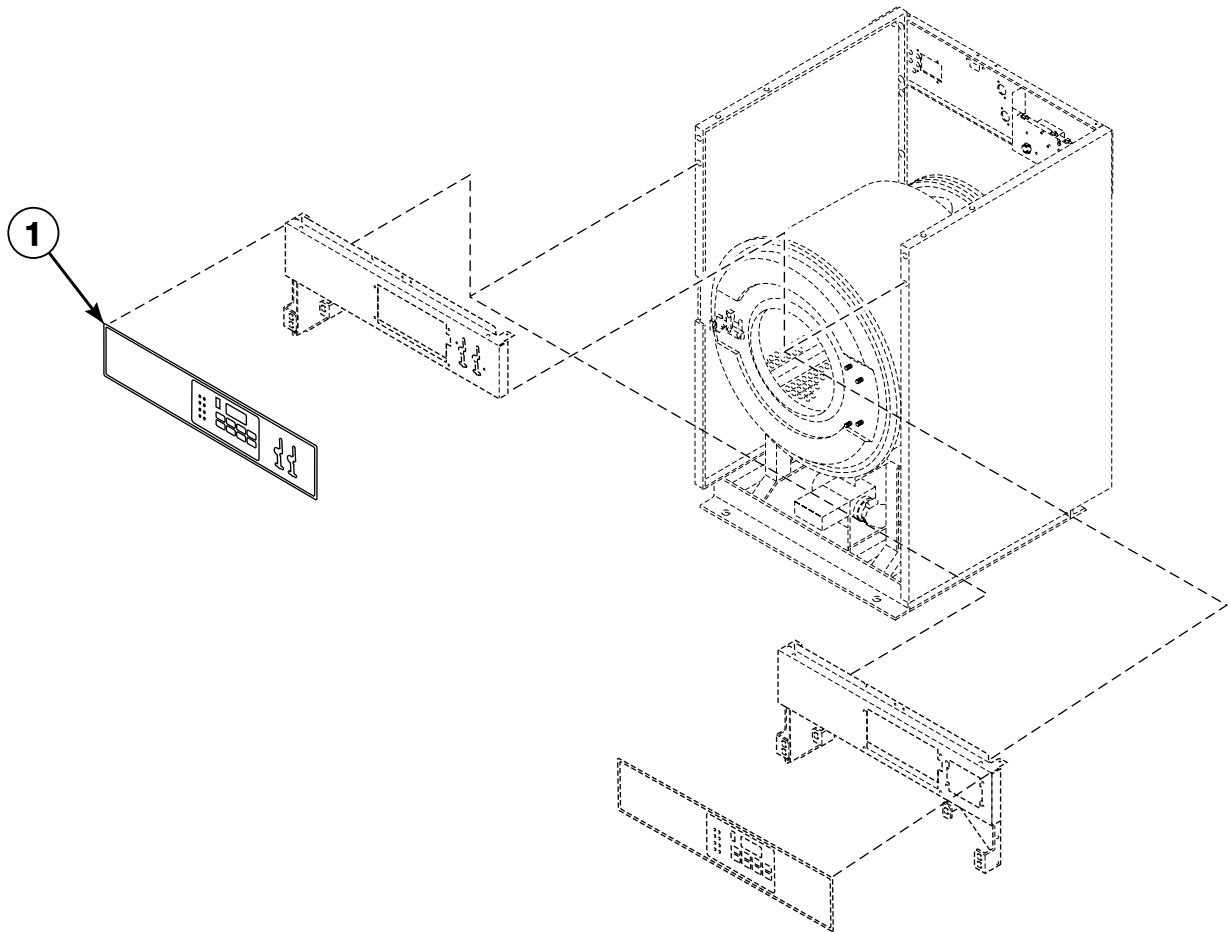
Front Panel and Control Panel - Card Reader and OPL Models



CHM3197P_F8330701

SCL 1 P16

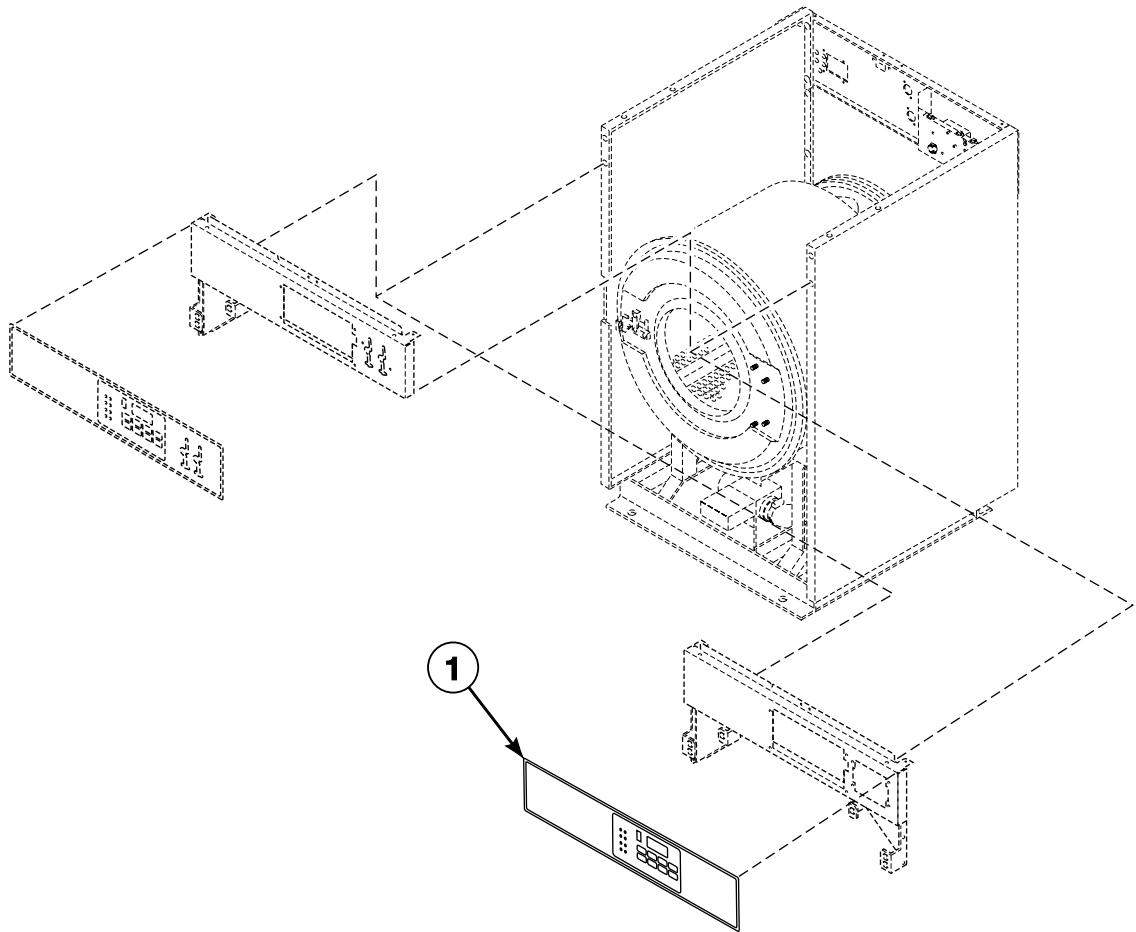
Control Panel Overlays - Coin and Card Models



CHM3124P_F8330701

SCL 1 P17

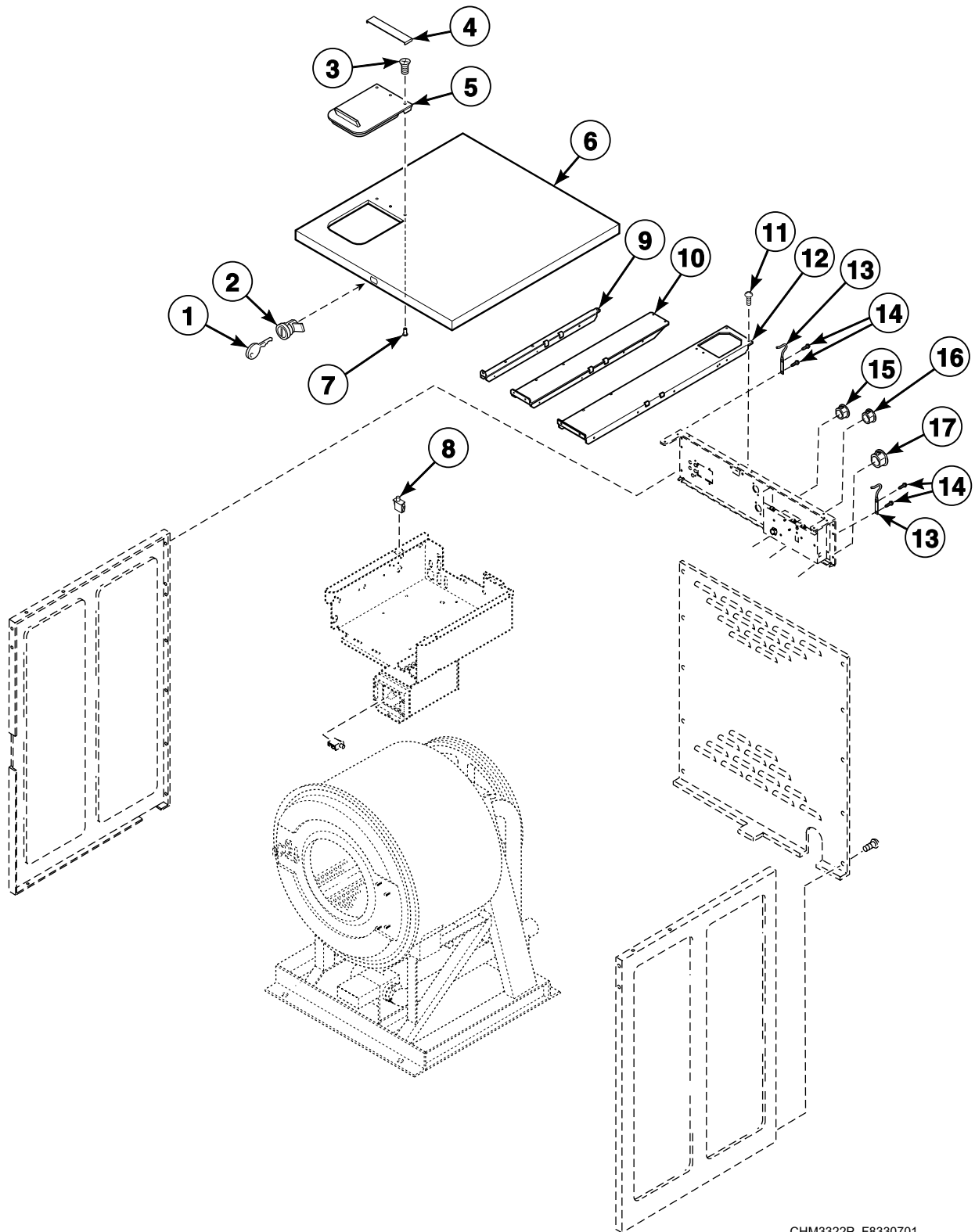
Control Panel Overlays - OPL Models



CHM3124PA_F8330701

SCL 1 P18

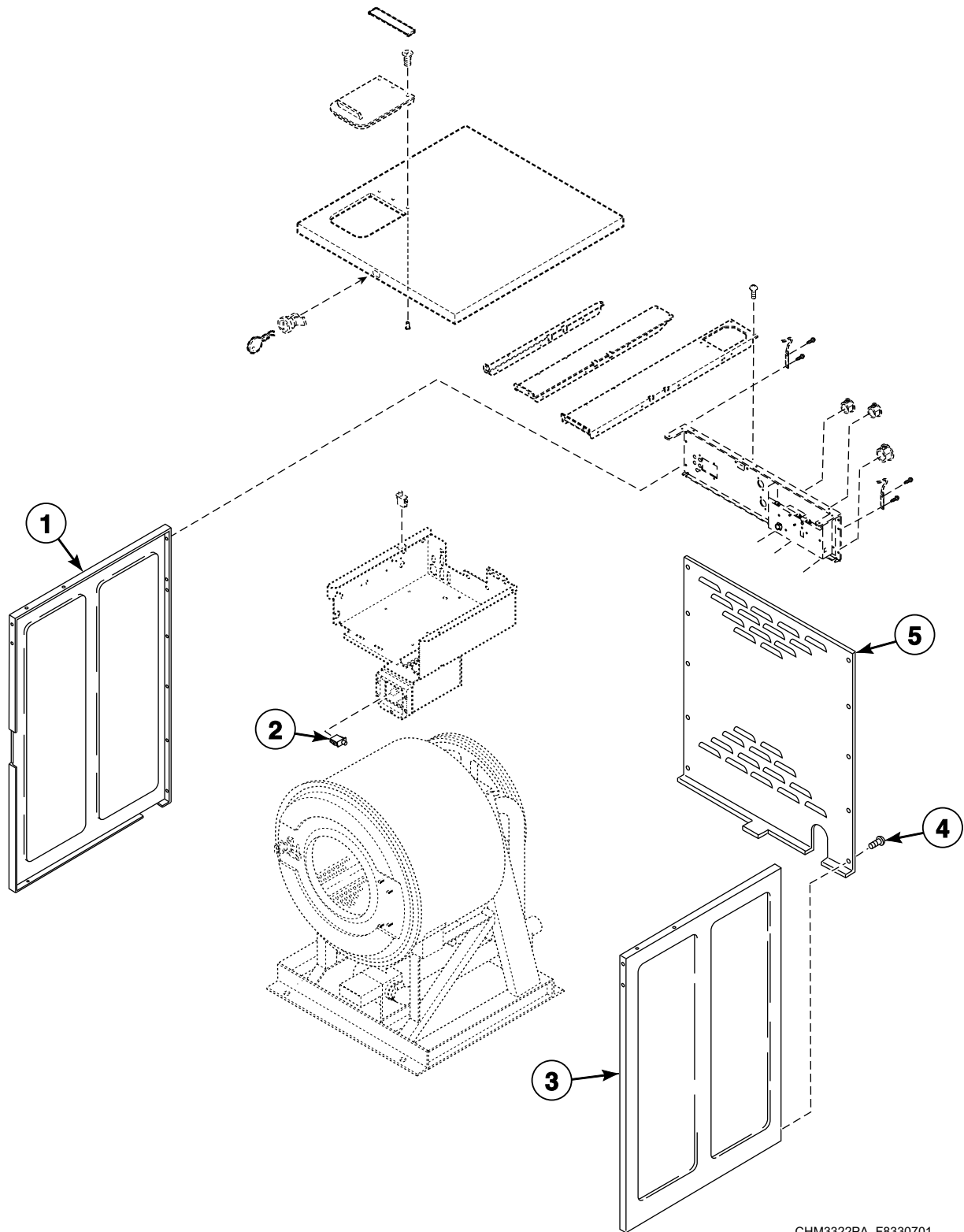
Panels (Drawing 1 of 2)



CHM3322P_F8330701

SCL 1 P19

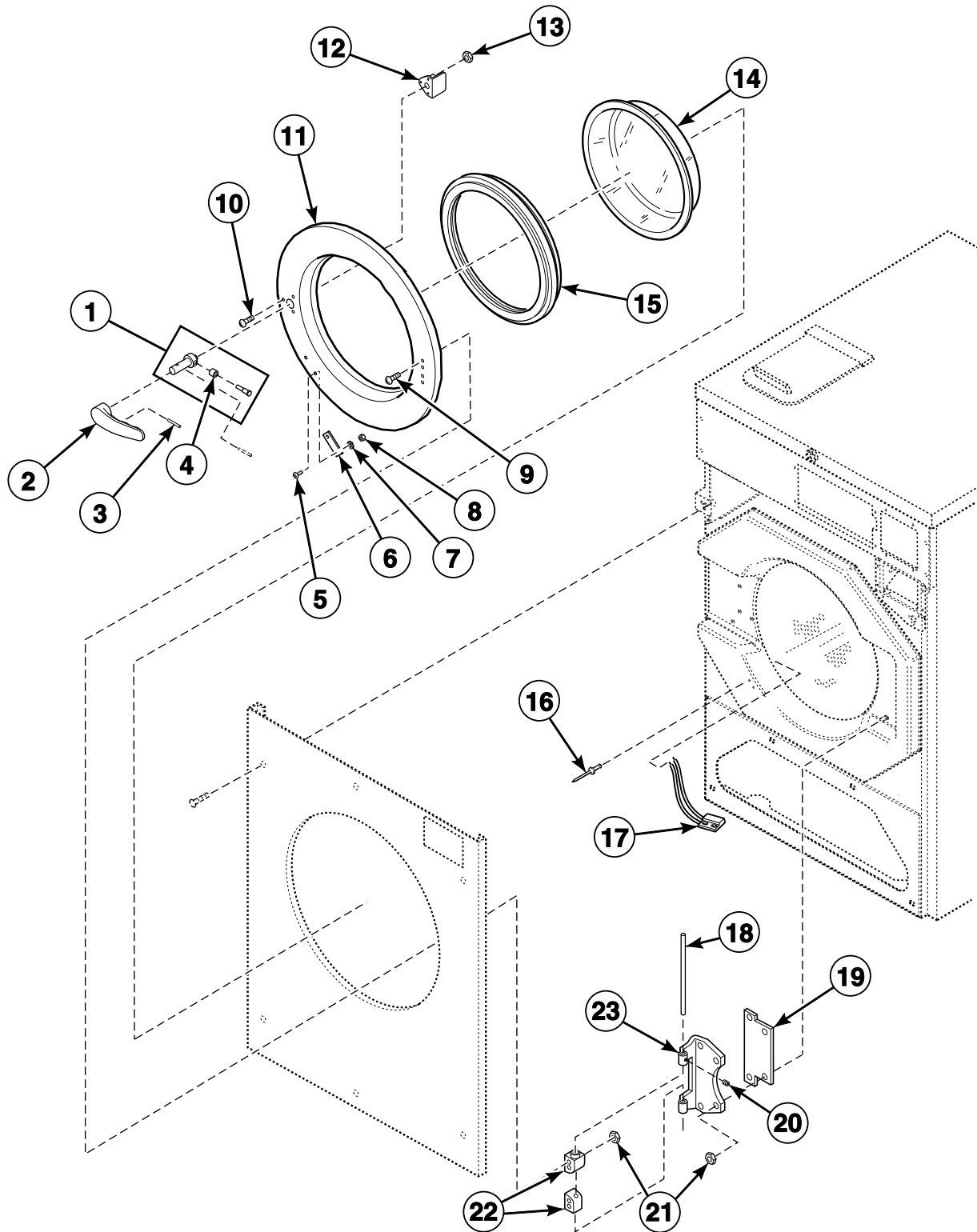
Panels (Drawing 2 of 2)



CHM3322PA_F8330701

SCL 1 P20

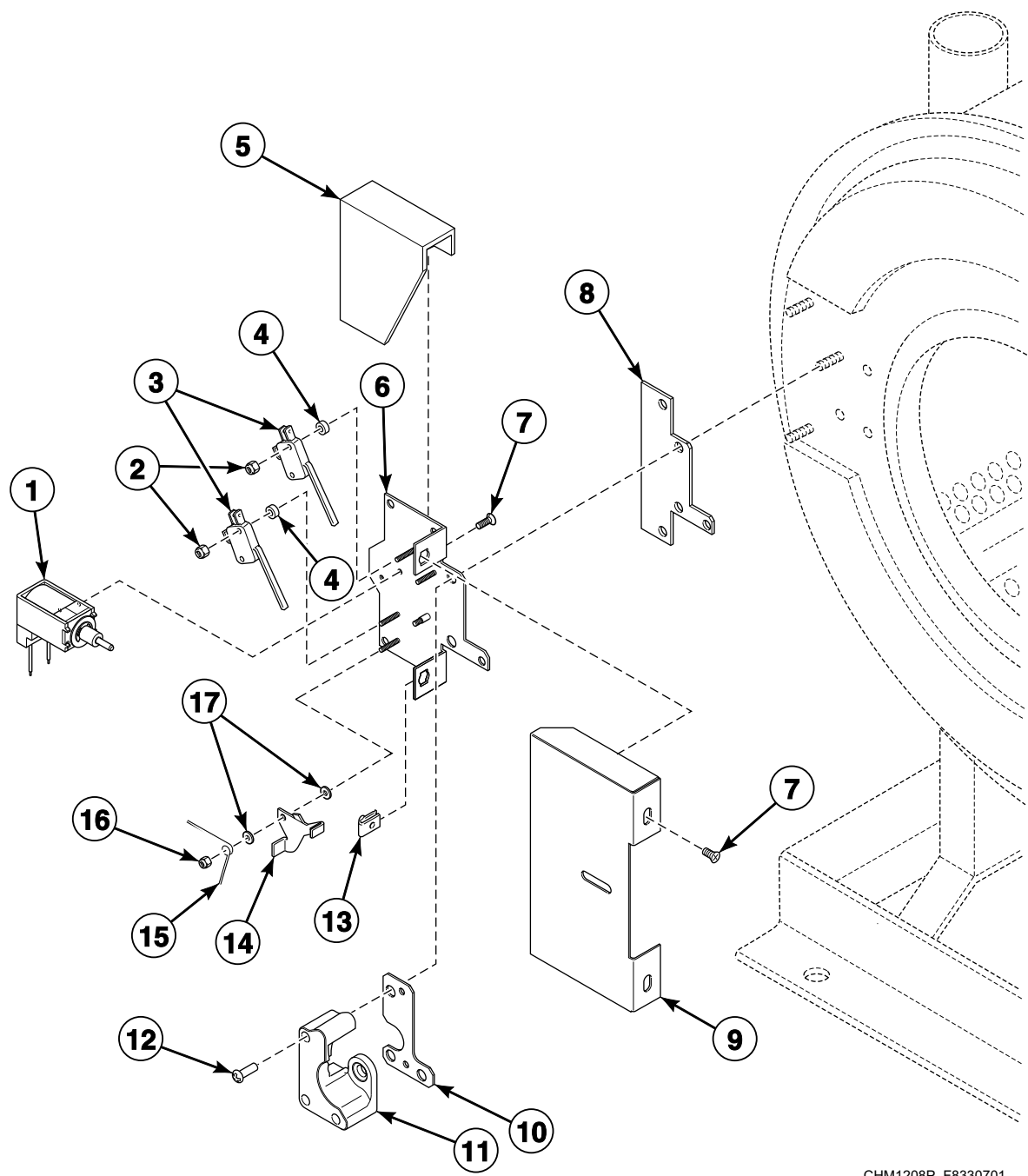
Door



CHM3155P_F8330701

SCL 1 P21

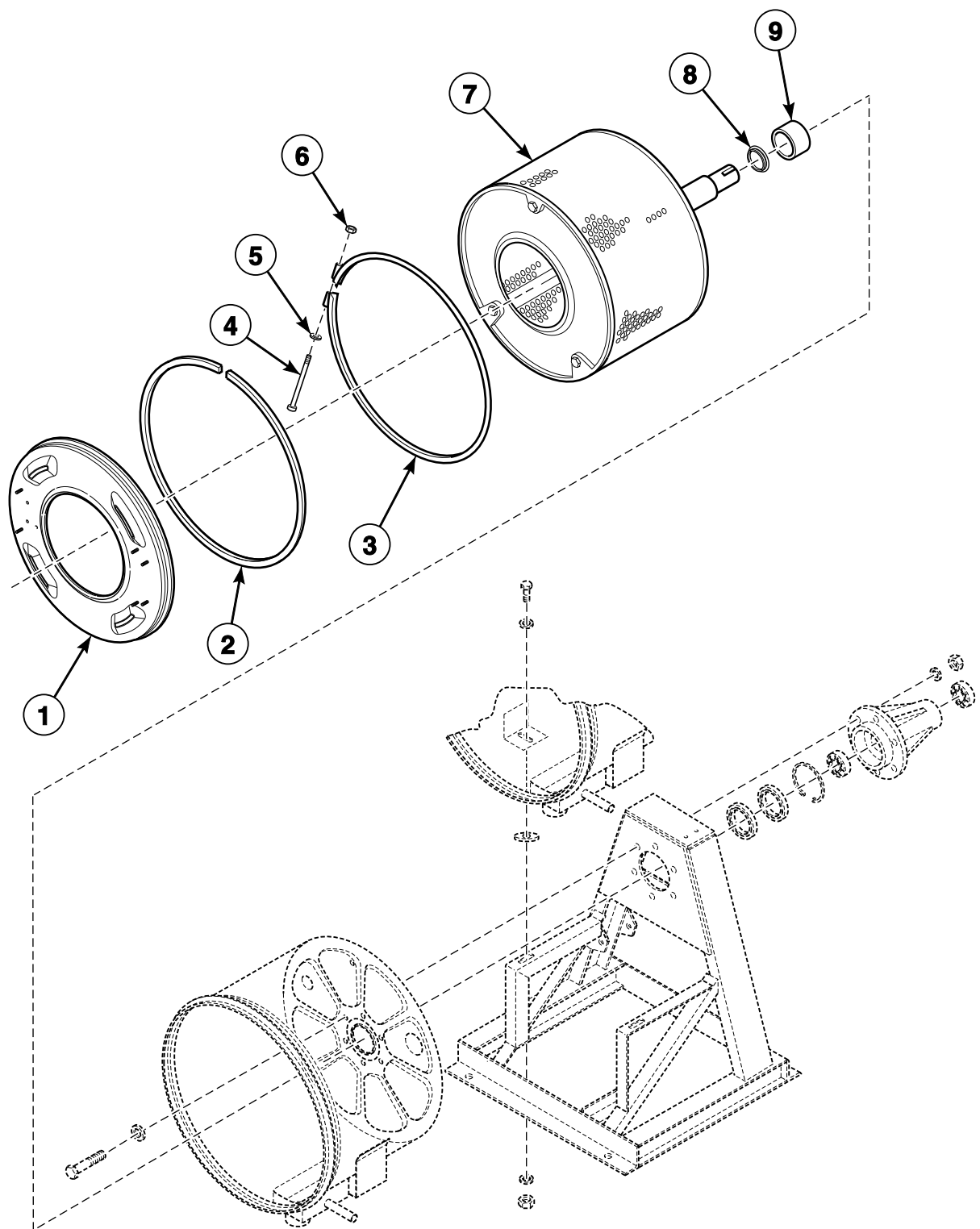
Door Lock



CHM1208P_F8330701

SCL 1 P22

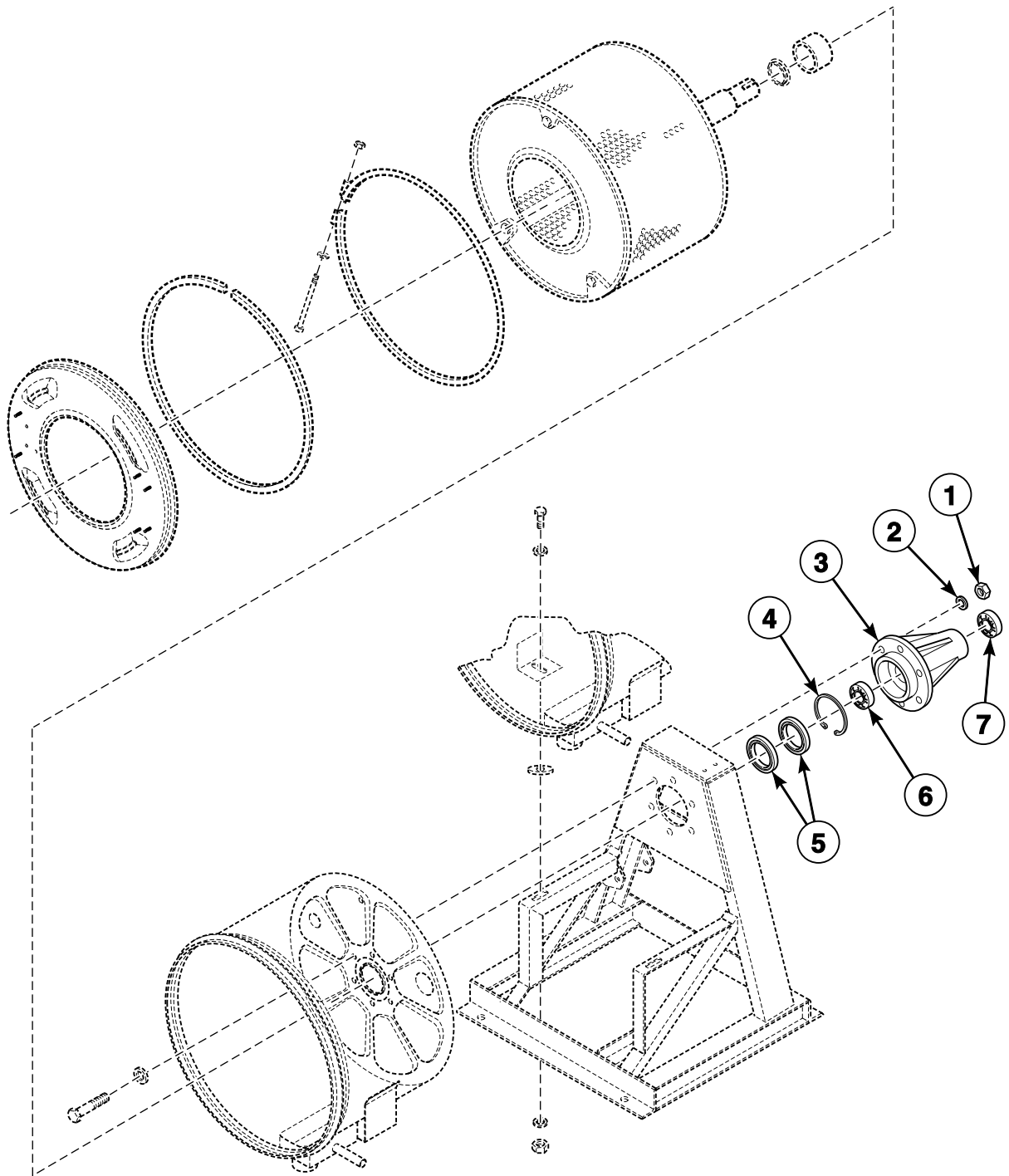
Basket, Shell, Frame and Trunnion - Design 1 Models (Drawing 1 of 3)



CHM3153P_F8330701

SCL 1 P23

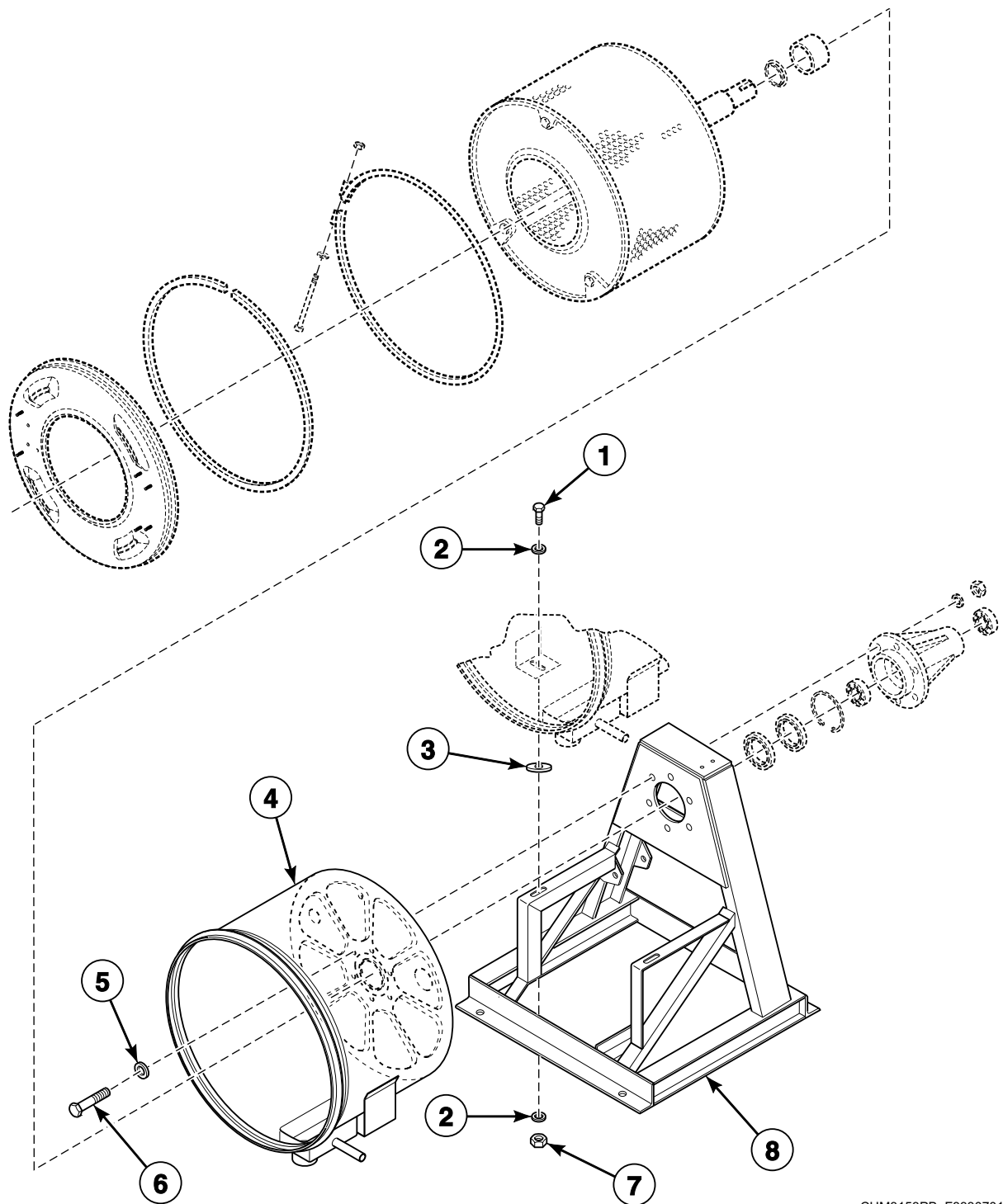
Basket, Shell, Frame and Trunnion - Design 1 Models (Drawing 2 of 3)



CHM3153PA_F8330701

SCL 1 P24

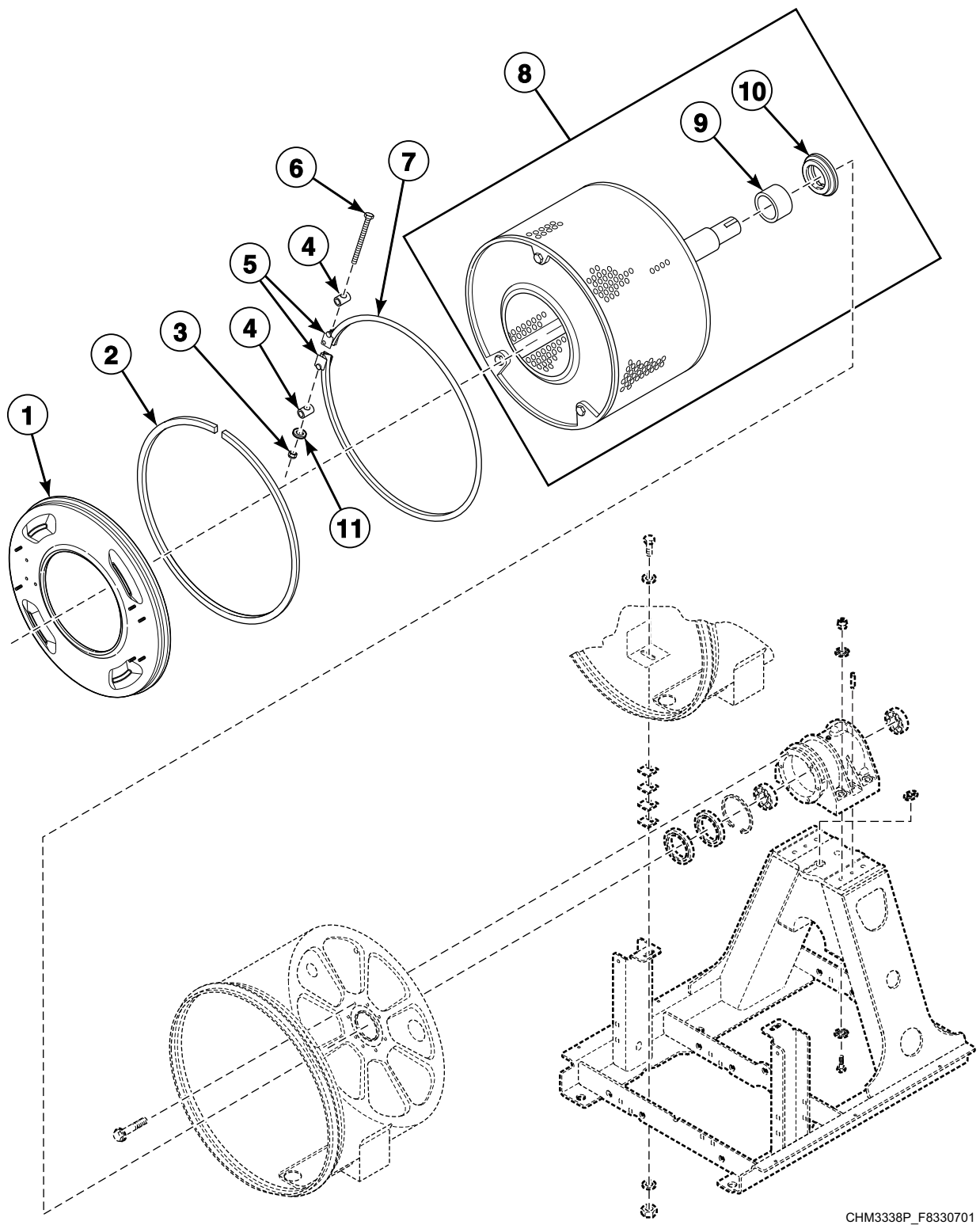
Basket, Shell, Frame and Trunnion - Design 1 Models (Drawing 3 of 3)



CHM3153PB_F8330701

SCL 1 P25

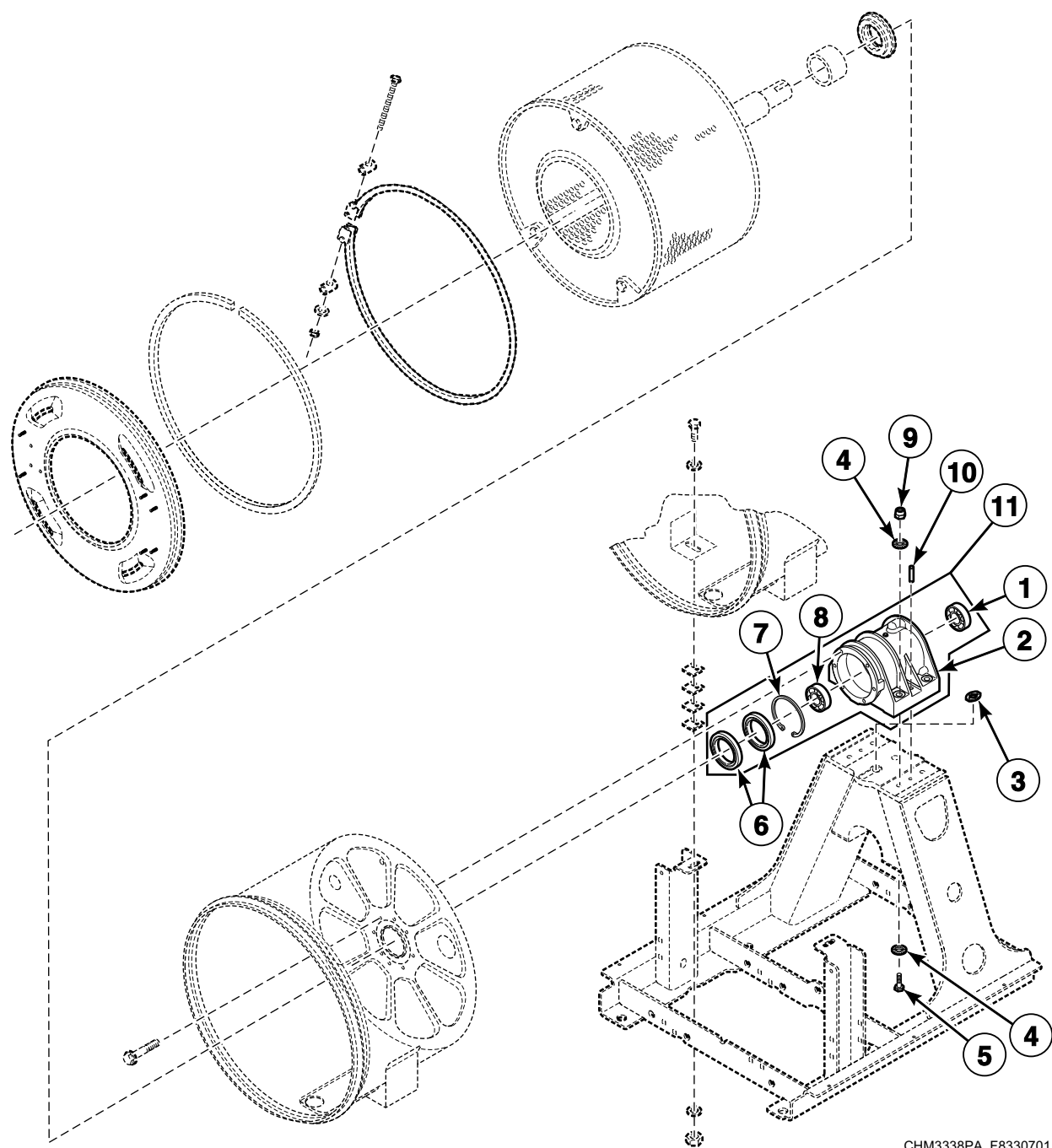
**Basket, Shell, Frame and Bearing Housing - Design 2 and 3 Models
(Drawing 1 of 3)**



CHM3338P_F8330701

SCL 1 P26

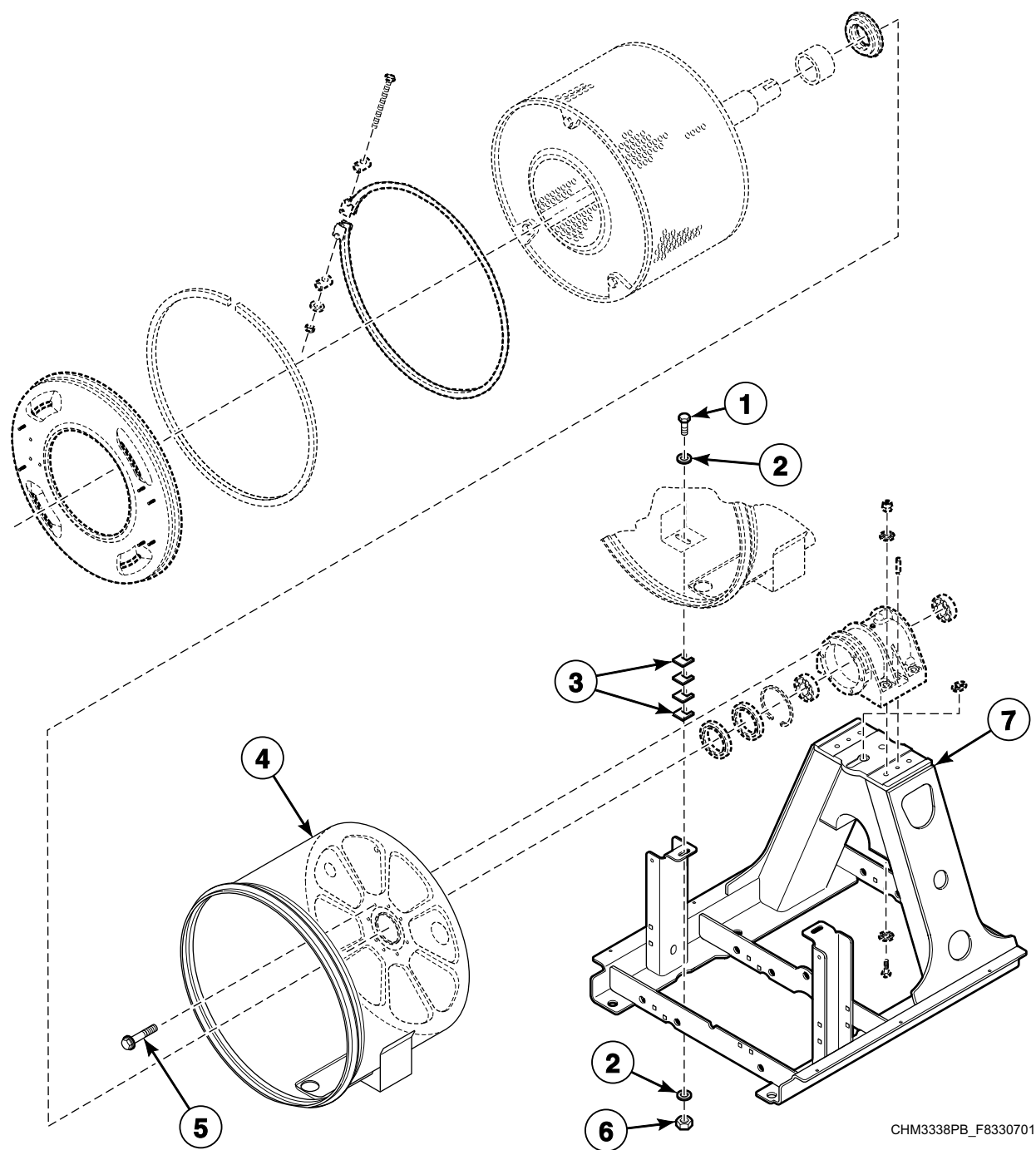
**Basket, Shell, Frame and Bearing Housing - Design 2 and 3 Models
(Drawing 2 of 3)**



CHM3338PA_F8330701

SCL 1 P27

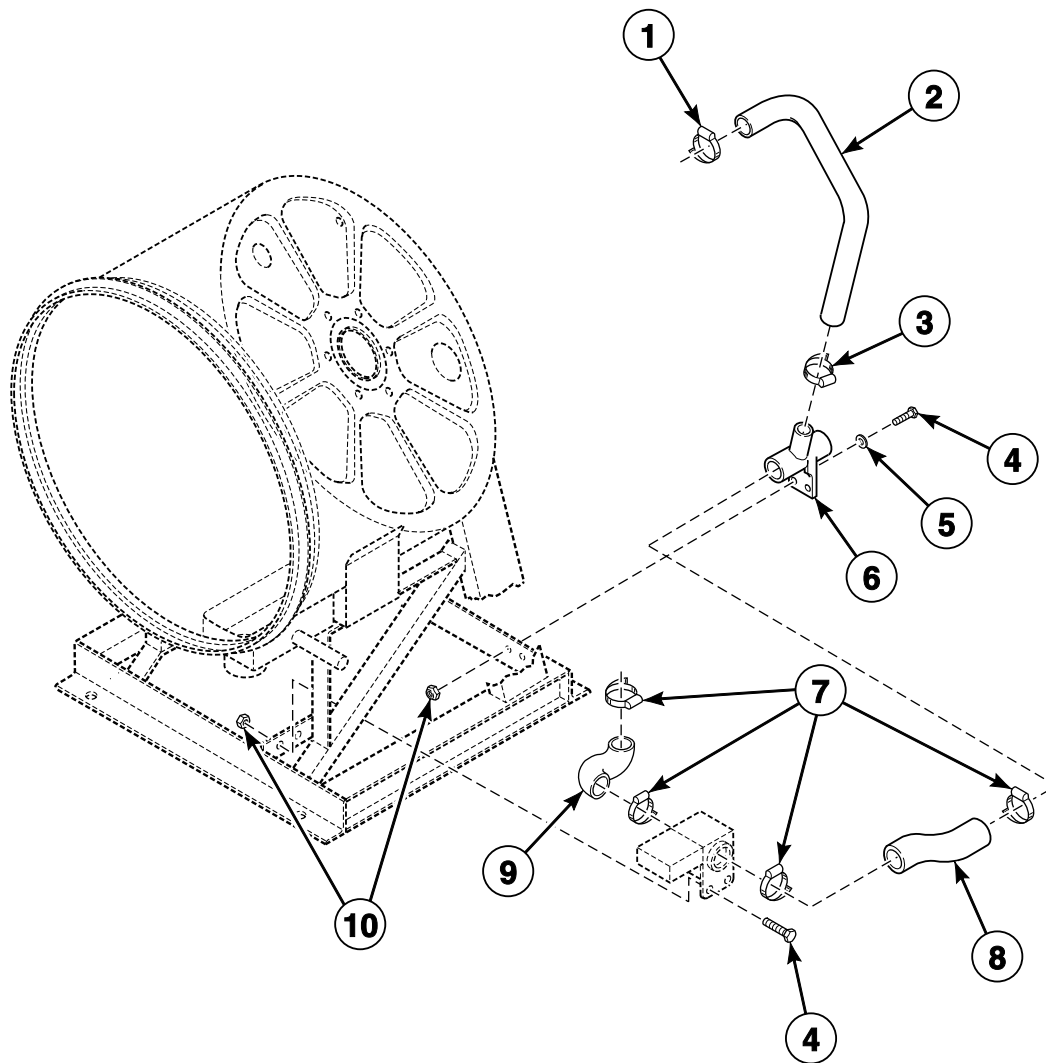
**Basket, Shell, Frame and Bearing Housing - Design 2 and 3 Models
(Drawing 3 of 3)**



CHM3338PB_F8330701

SCL 1 P28

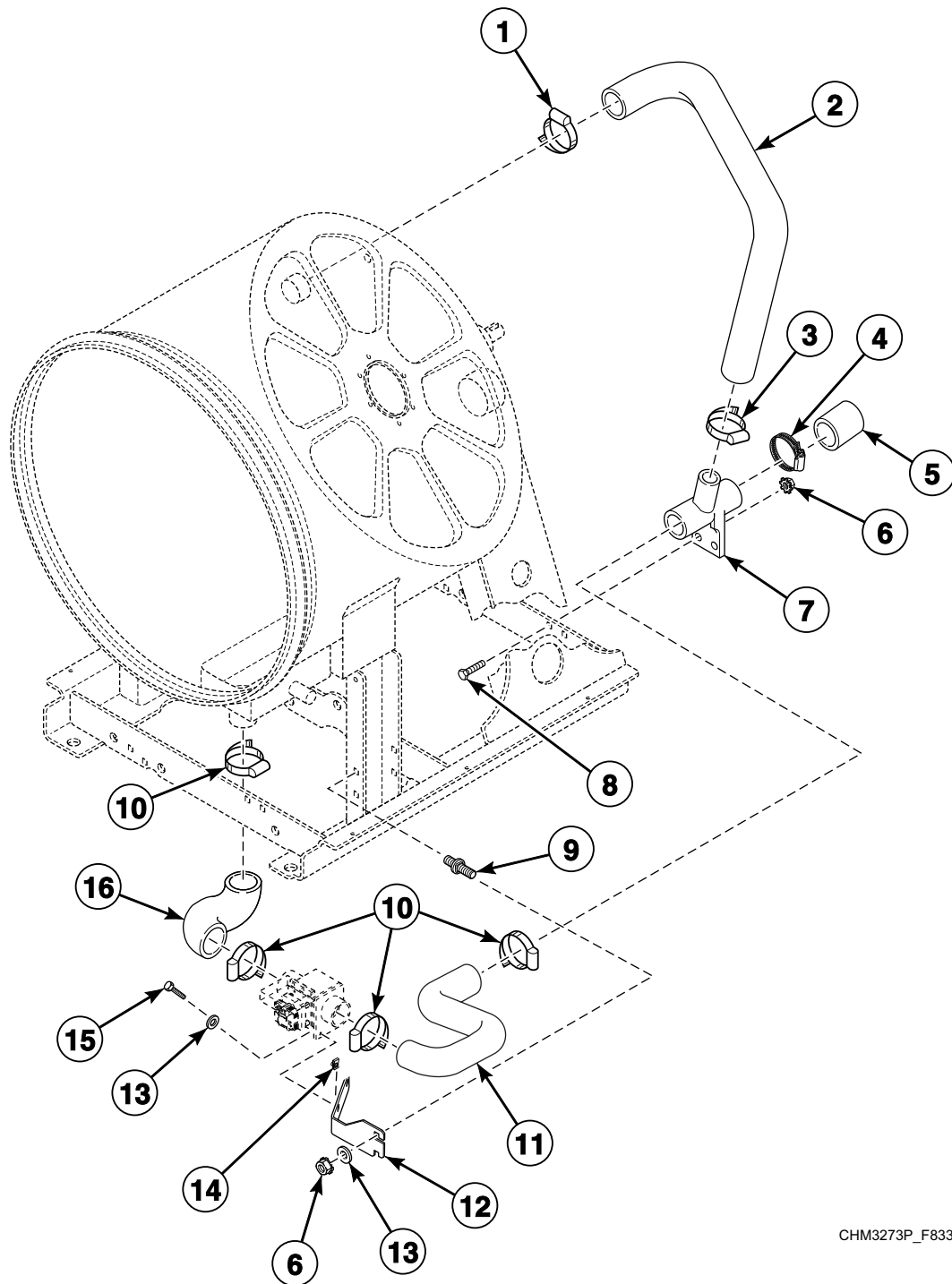
Drain Plumbing - Design 1 Models



CHM3046P_F8330701

SCL 1 P29

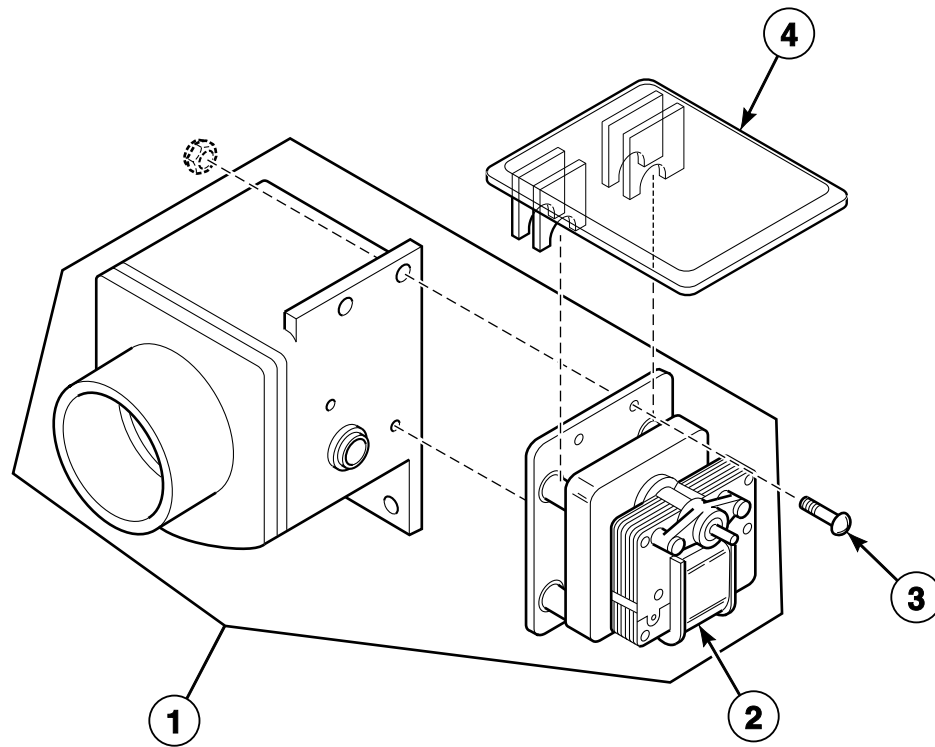
Drain Plumbing - Design 2 and 3 Models



CHM3273P_F8330701

SCL 1 P30

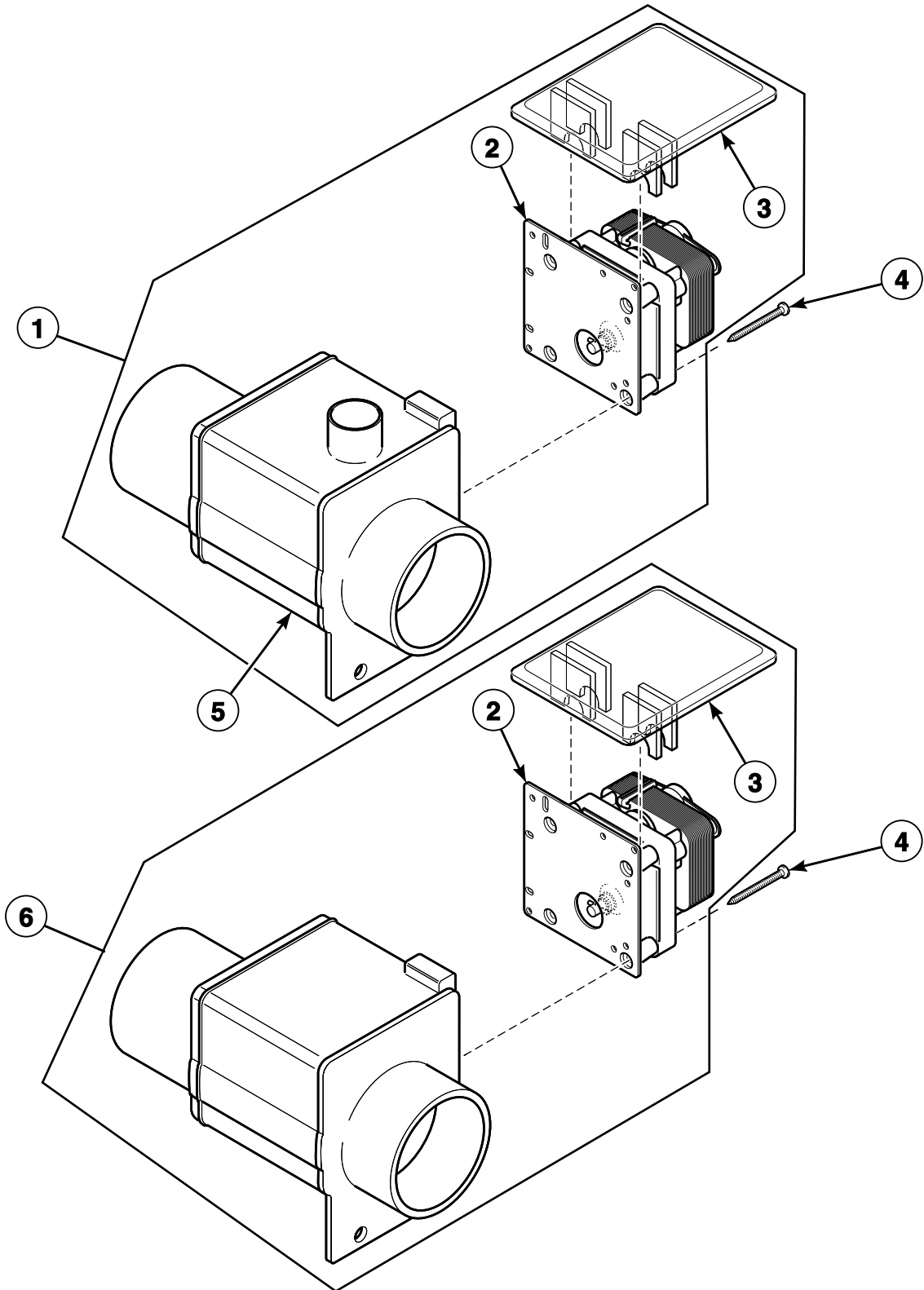
Drain Valve Assembly - 20 and 30 Pound Models



CHM2450P_F8330701

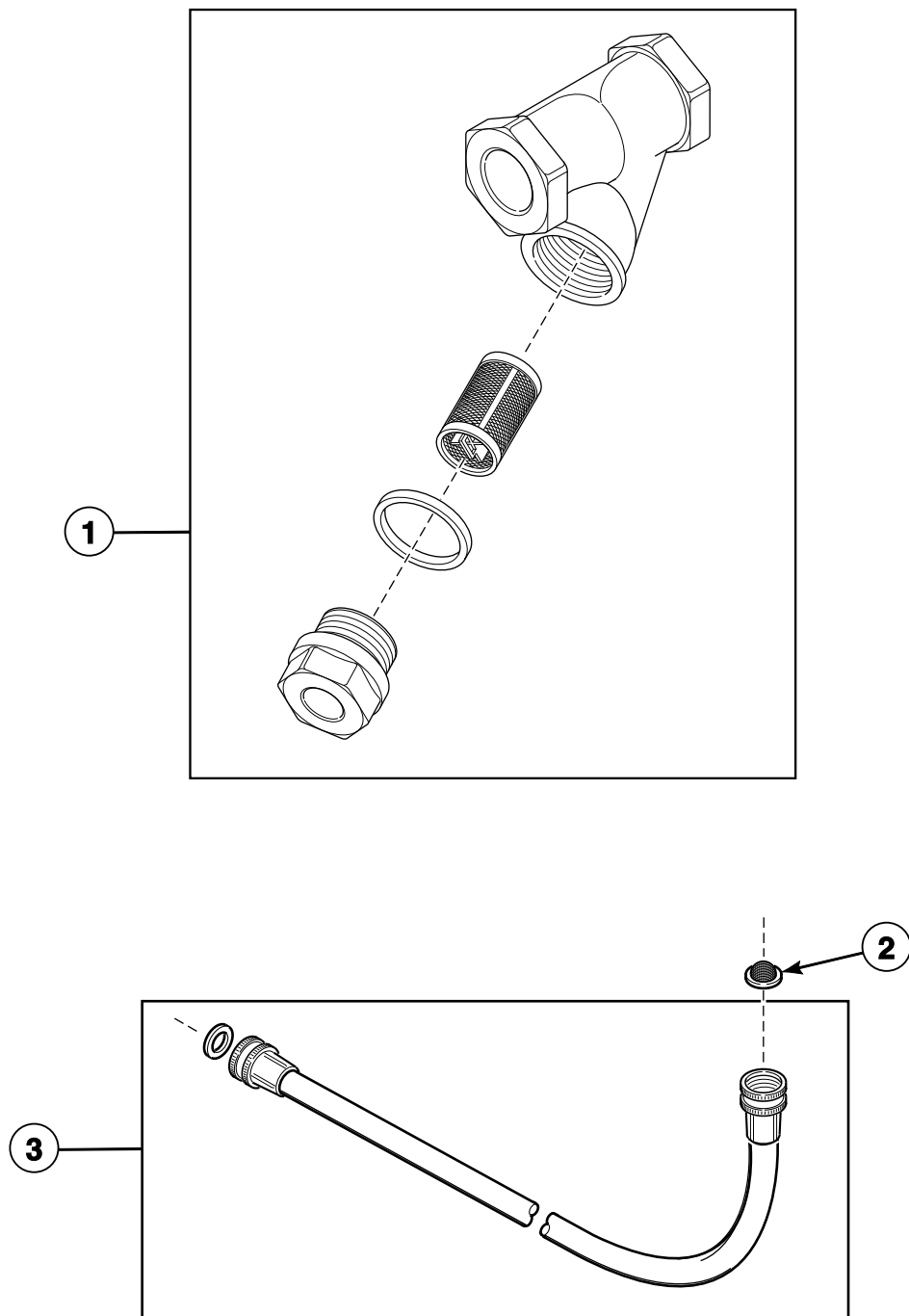
SCL 1 P31

Drain Valve Assembly - 40 and 60 Pound Models



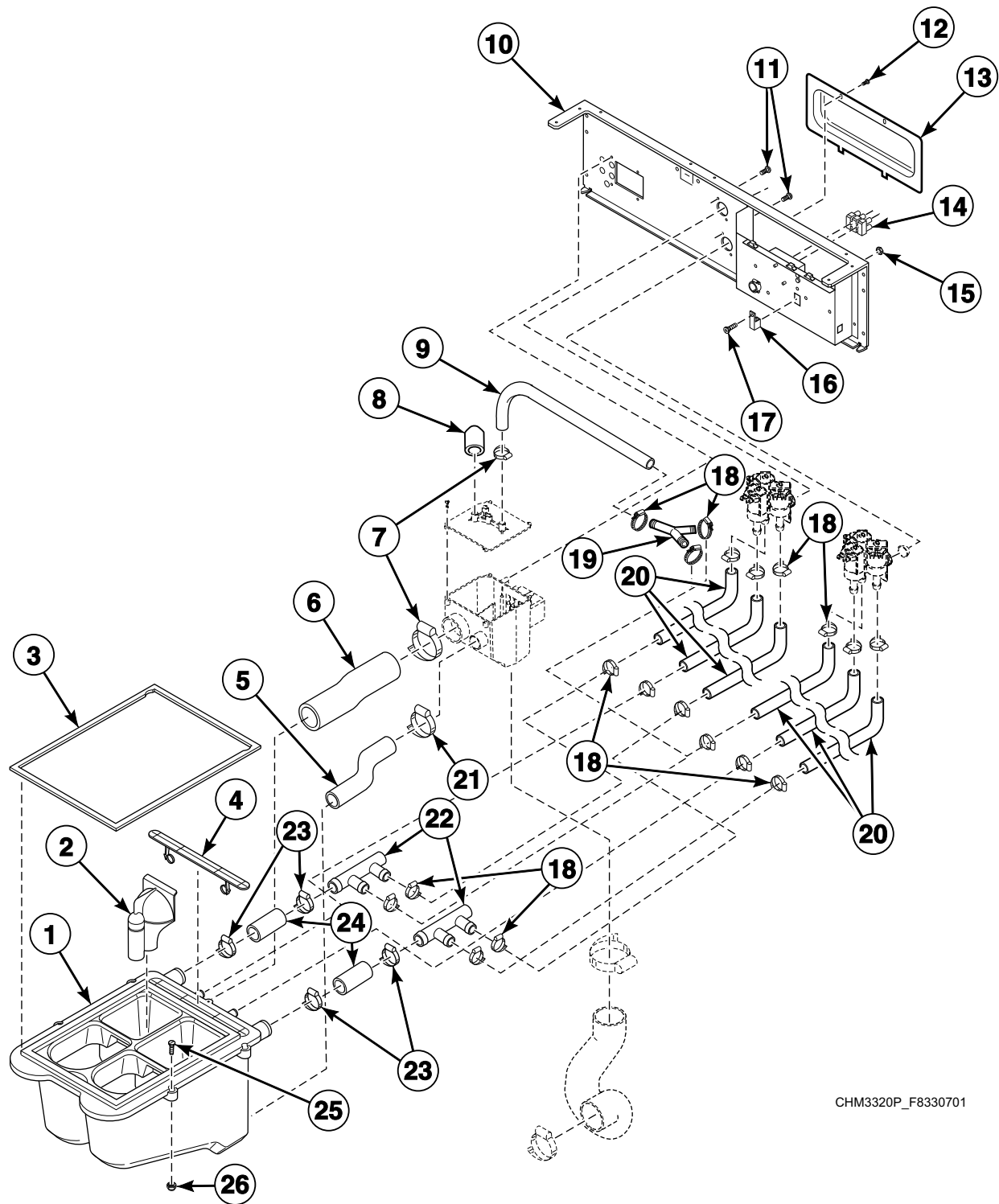
CHM3081P_F8330701

Steam Filter (Optional) and Water Supply Hose



CHM3049P_F8330701

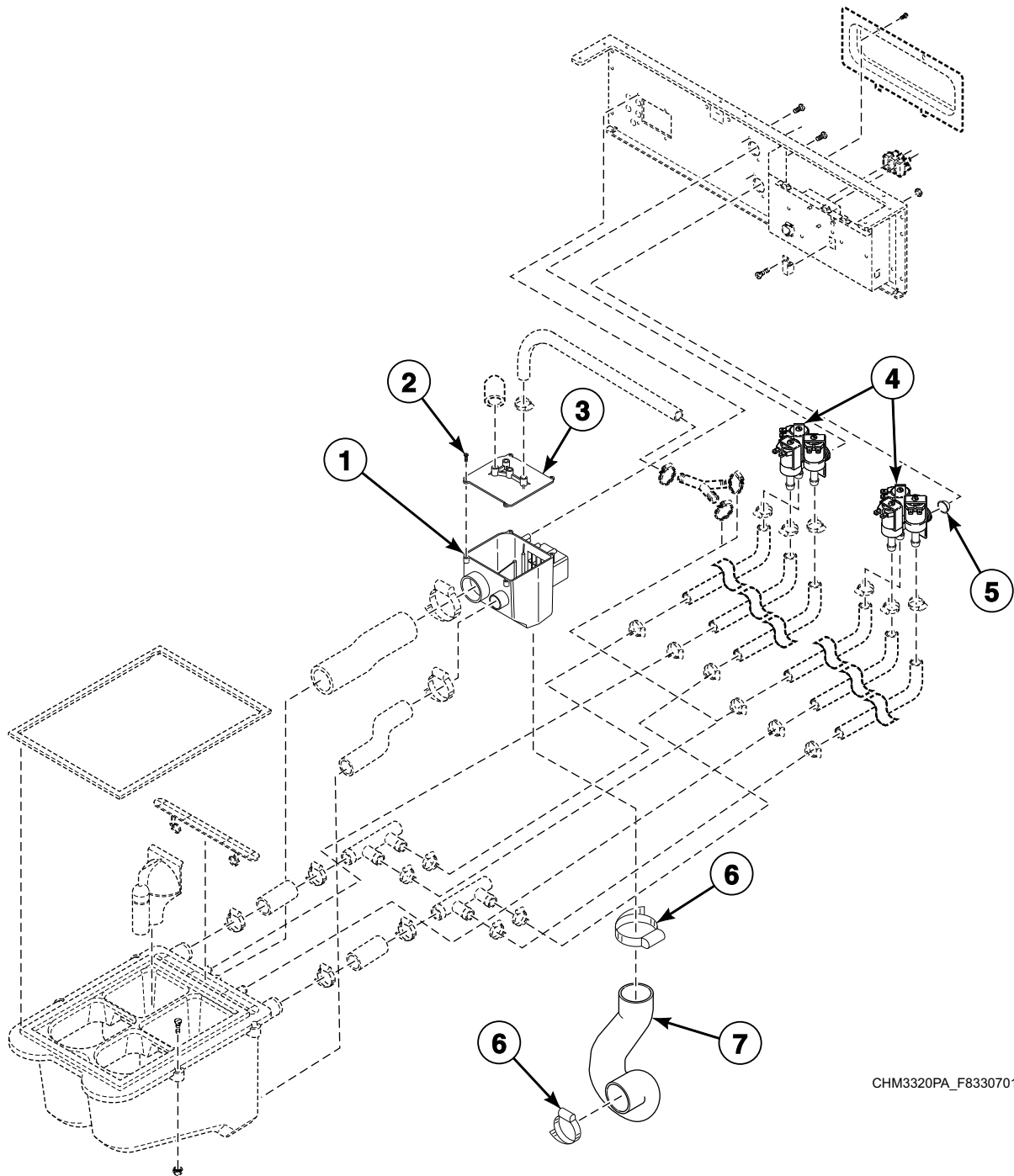
Fill Plumbing Assembly (Drawing 1 of 2)



CHM3320P_F8330701

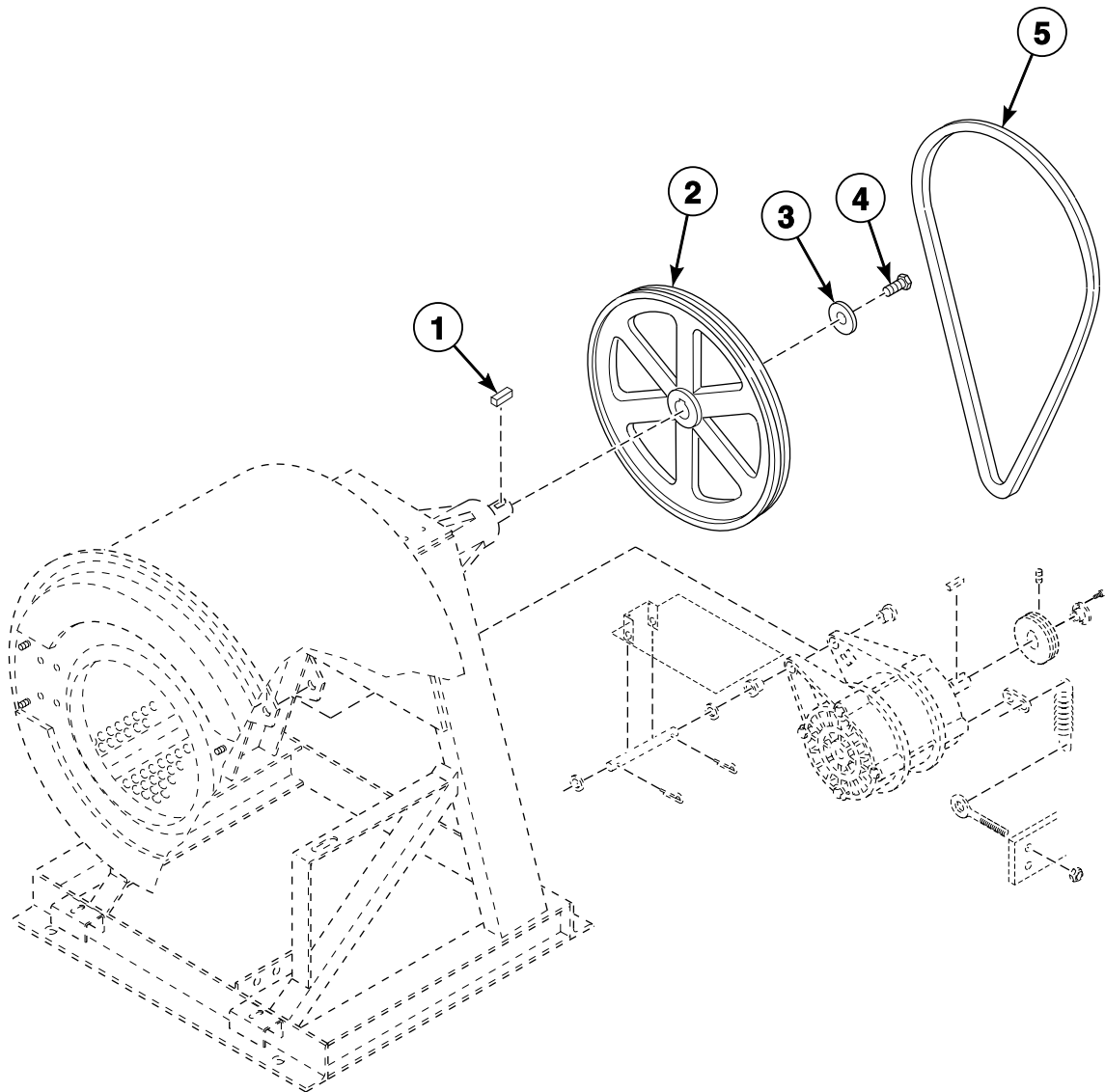
SCL 1 P34

Fill Plumbing Assembly (Drawing 2 of 2)



SCL 1 P35

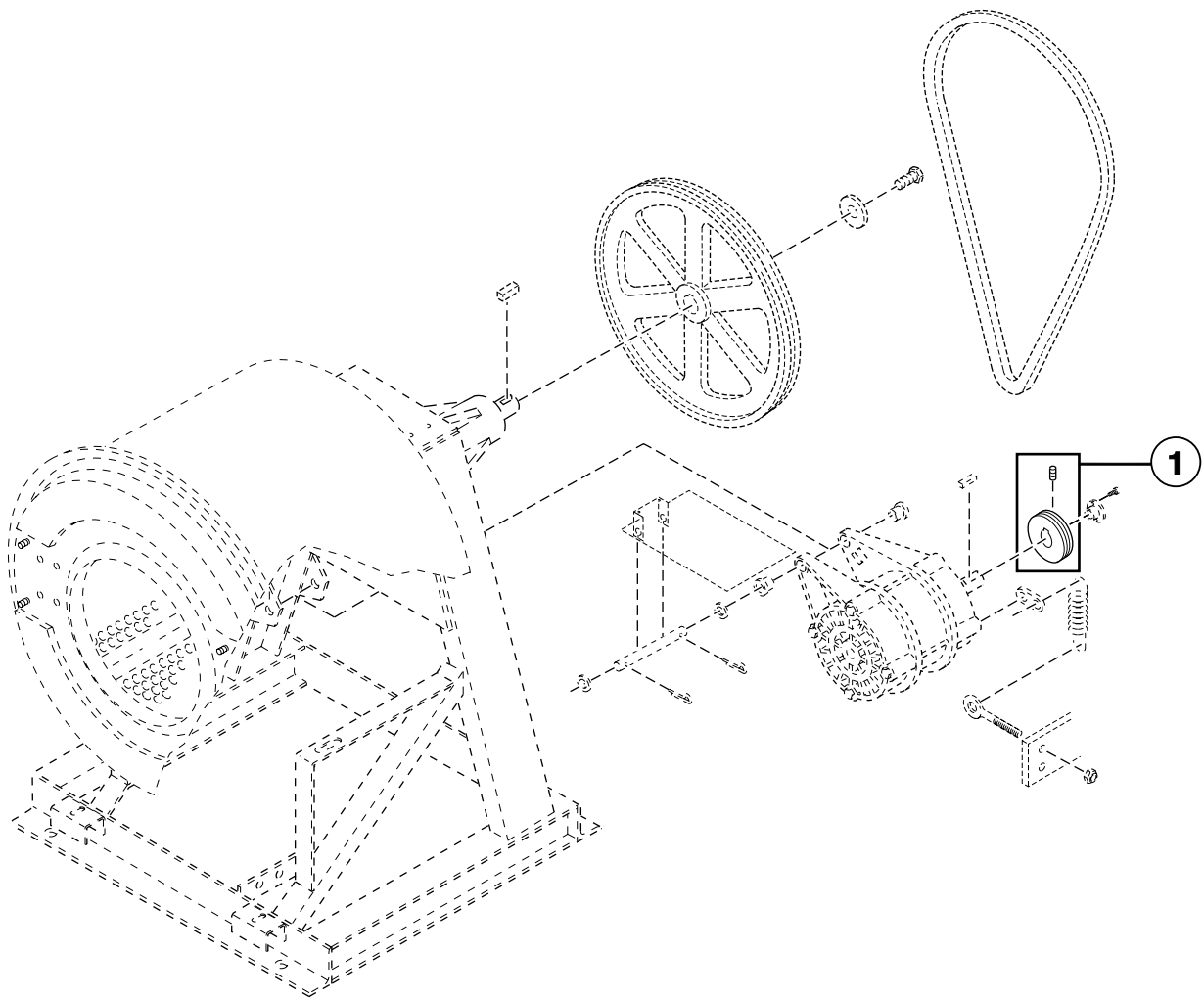
Pulley and Belt - Design 1 Models (Drawing 1 of 3)



CHM3050P_F8330701

SCL 1 P36

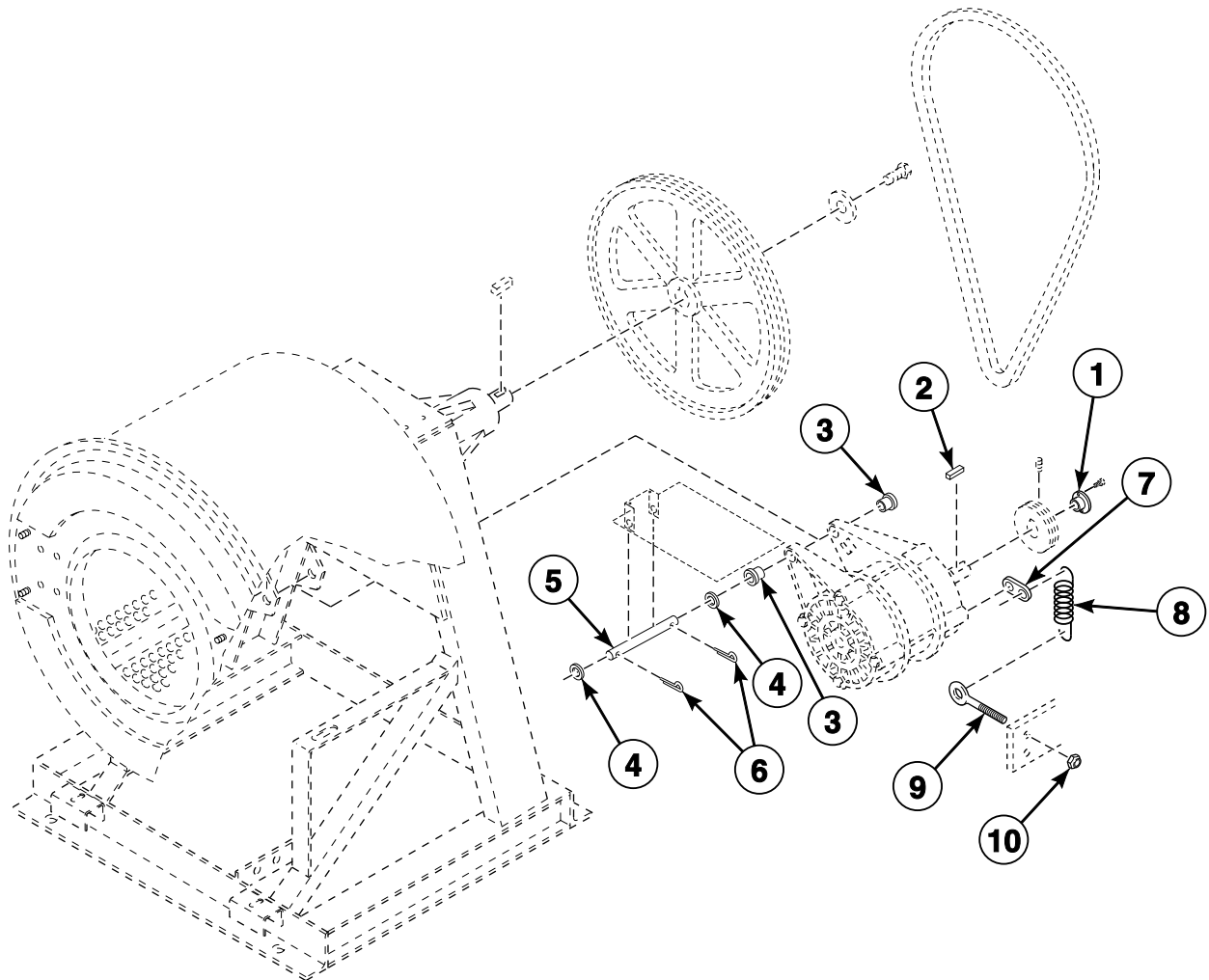
Pulley and Belt - Design 1 Models (Drawing 2 of 3)



CHM3050PA_F8330701

SCL 1 P37

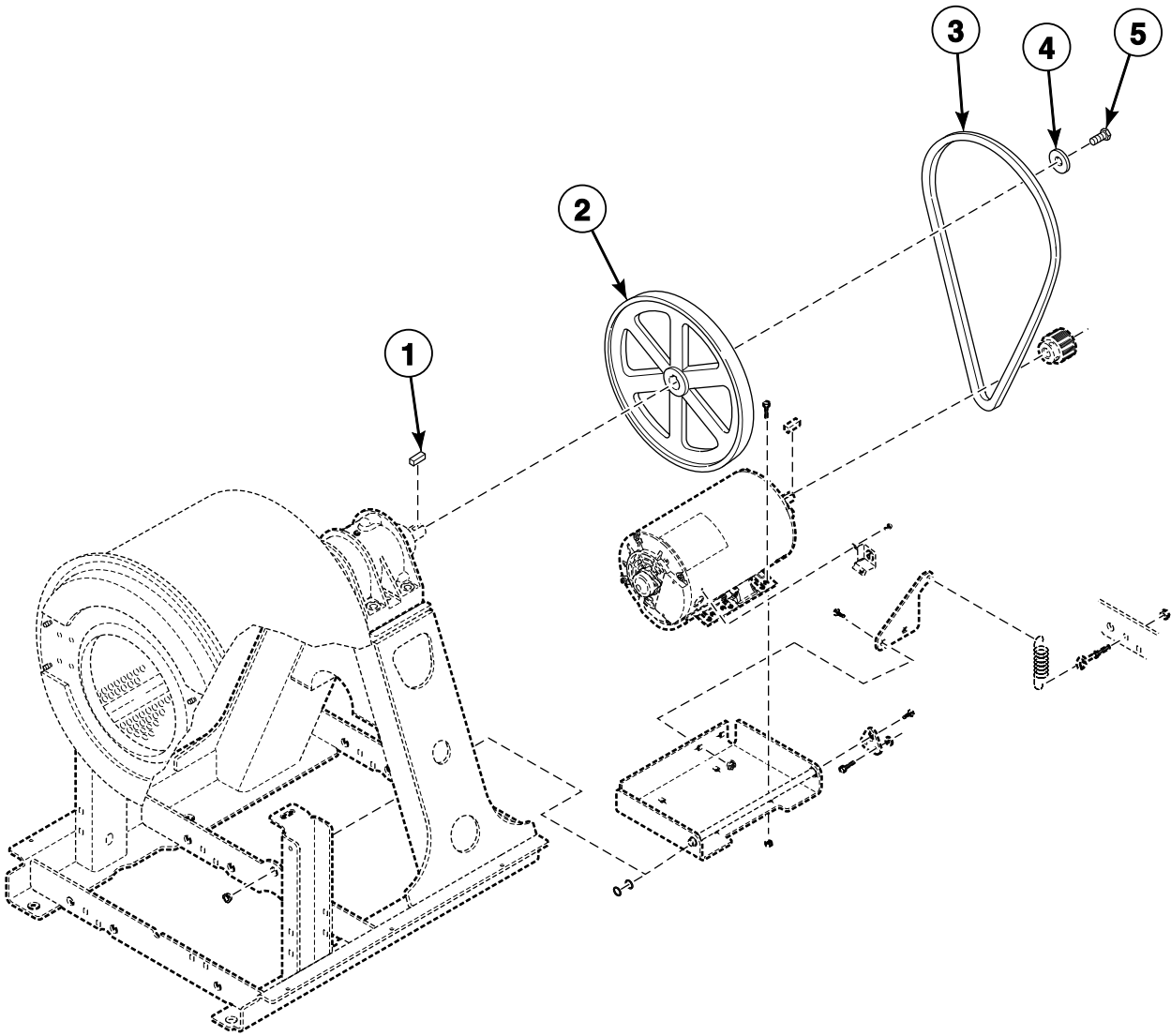
Pulley and Belt - Design 1 Models (Drawing 3 of 3)



CHM3050PB_F8330701

SCL 1 P38

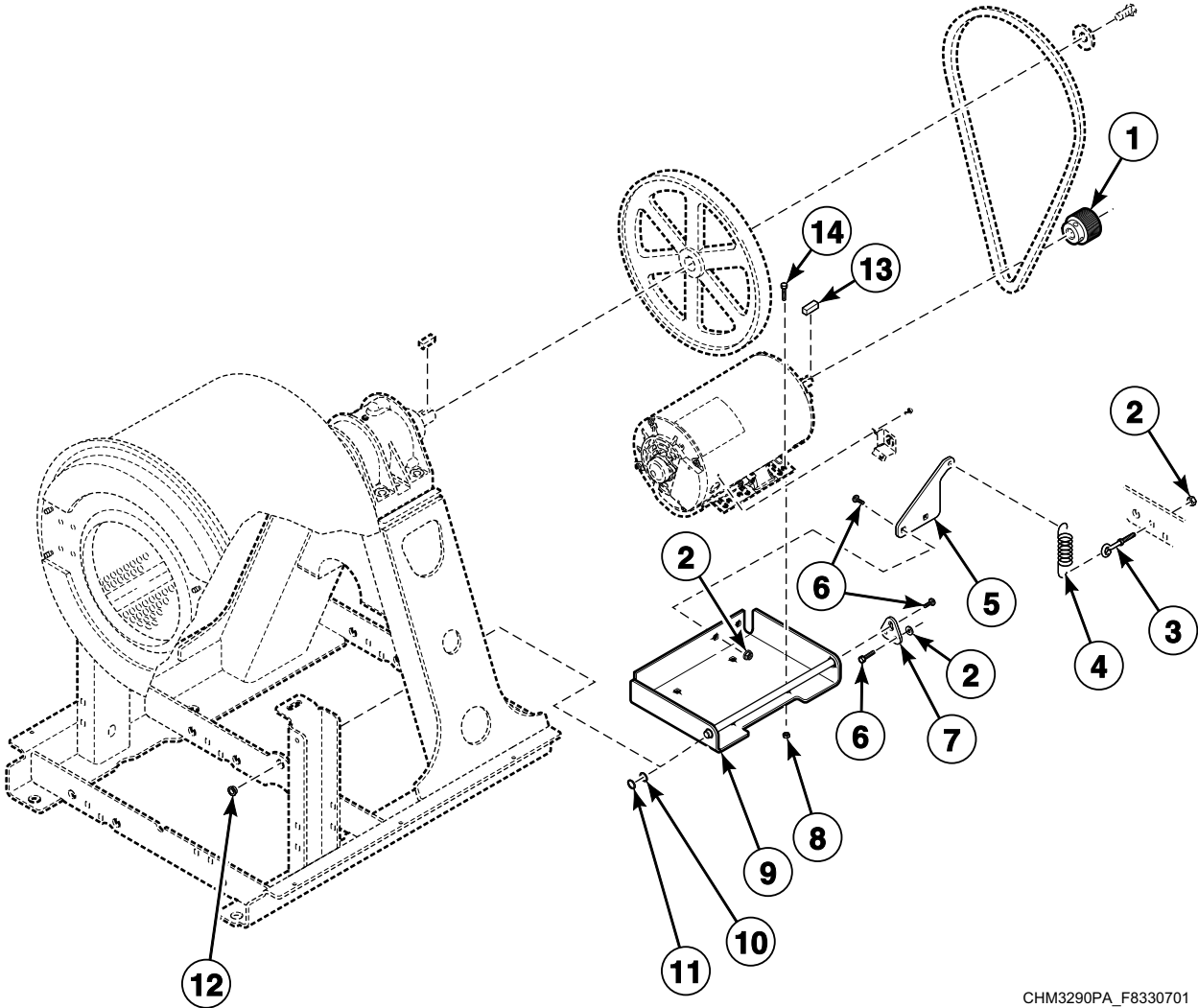
Pulley and Belt - Design 2 and 3 Models (Drawing 1 of 2)



CHM3290P_F8330701

SCL 1 P39

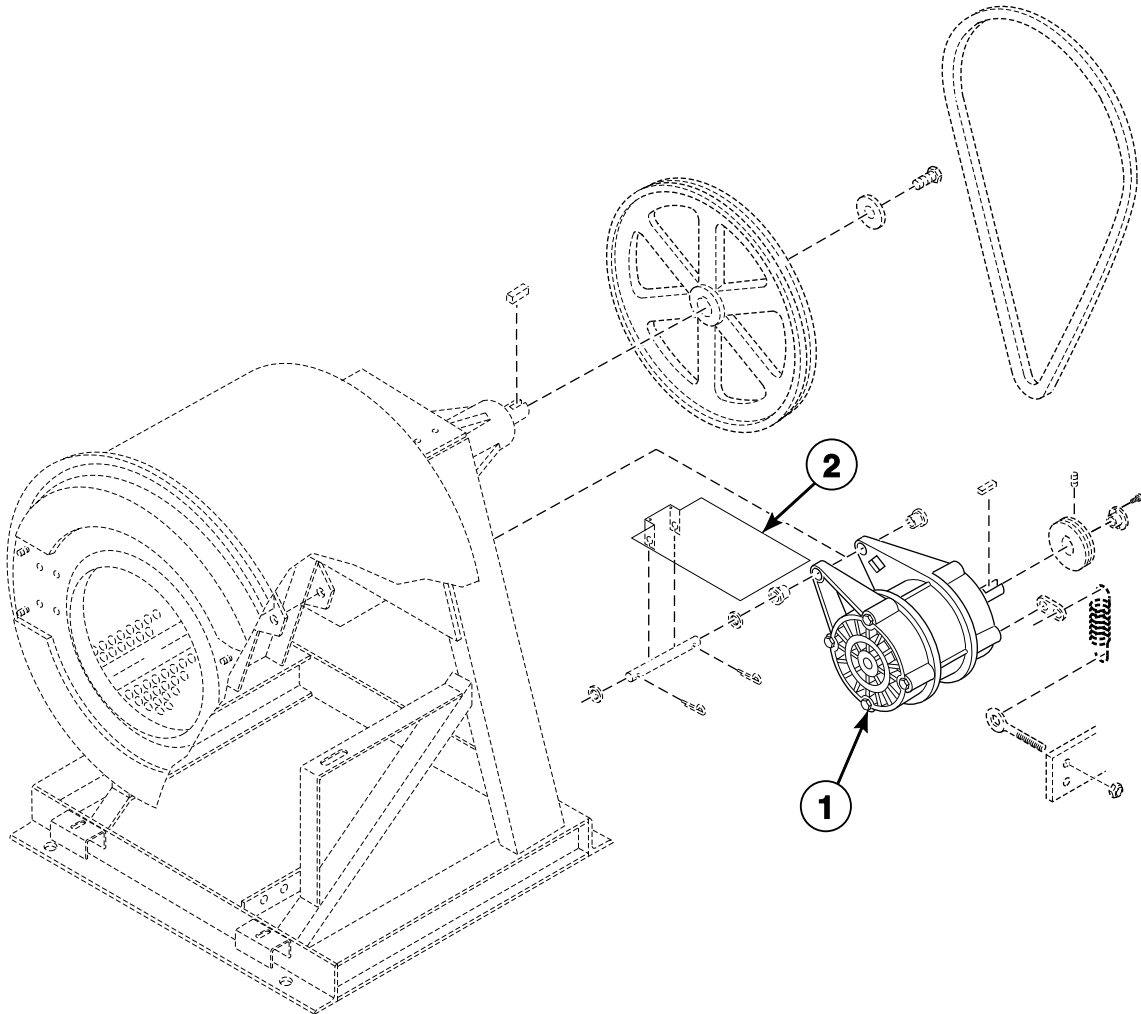
Pulley and Belt - Design 2 and 3 Models (Drawing 2 of 2)



CHM3290PA_F8330701

SCL 1 P40

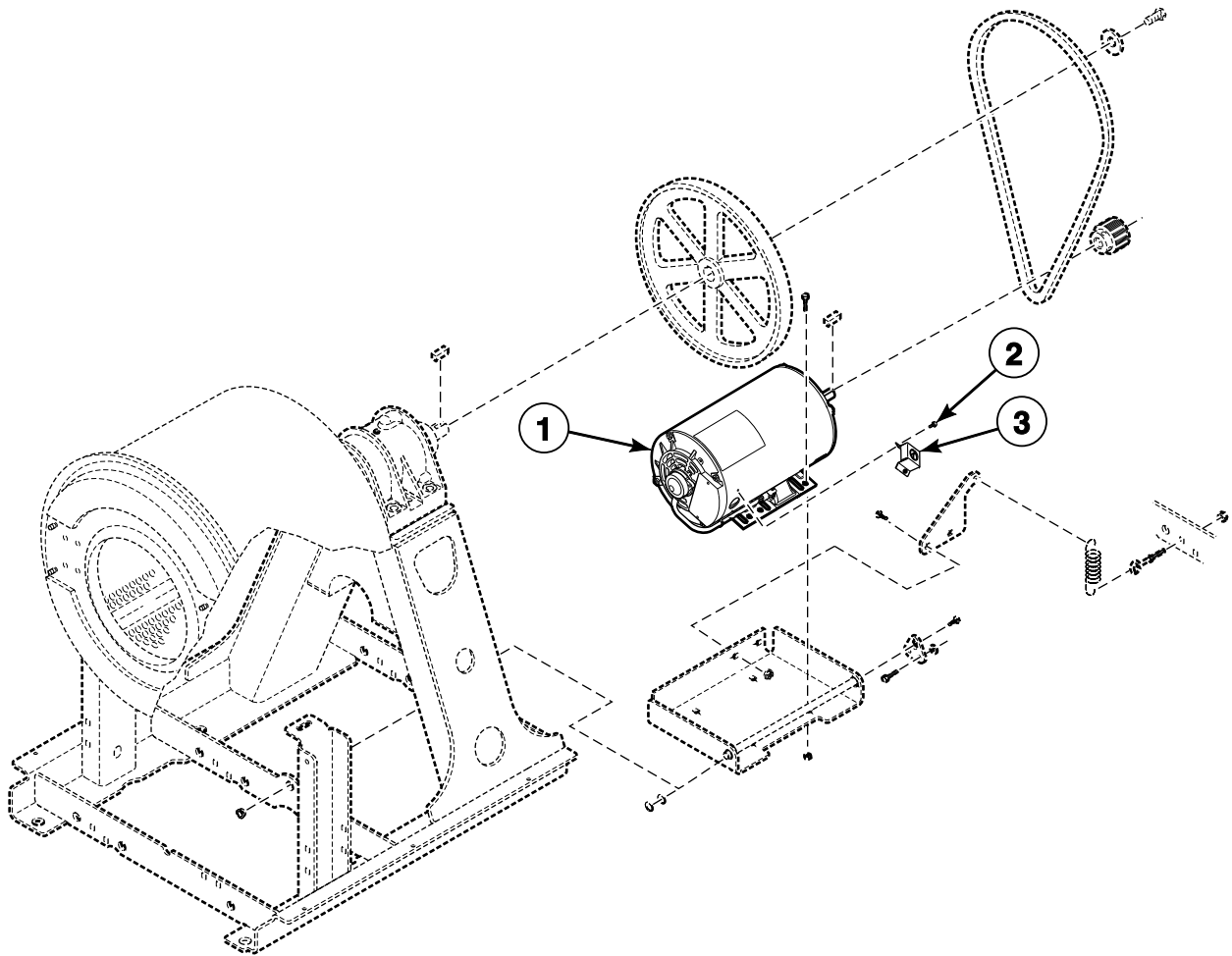
Motor - Design 1 Models



CHM3050PC_F8330701

SCL 1 P41

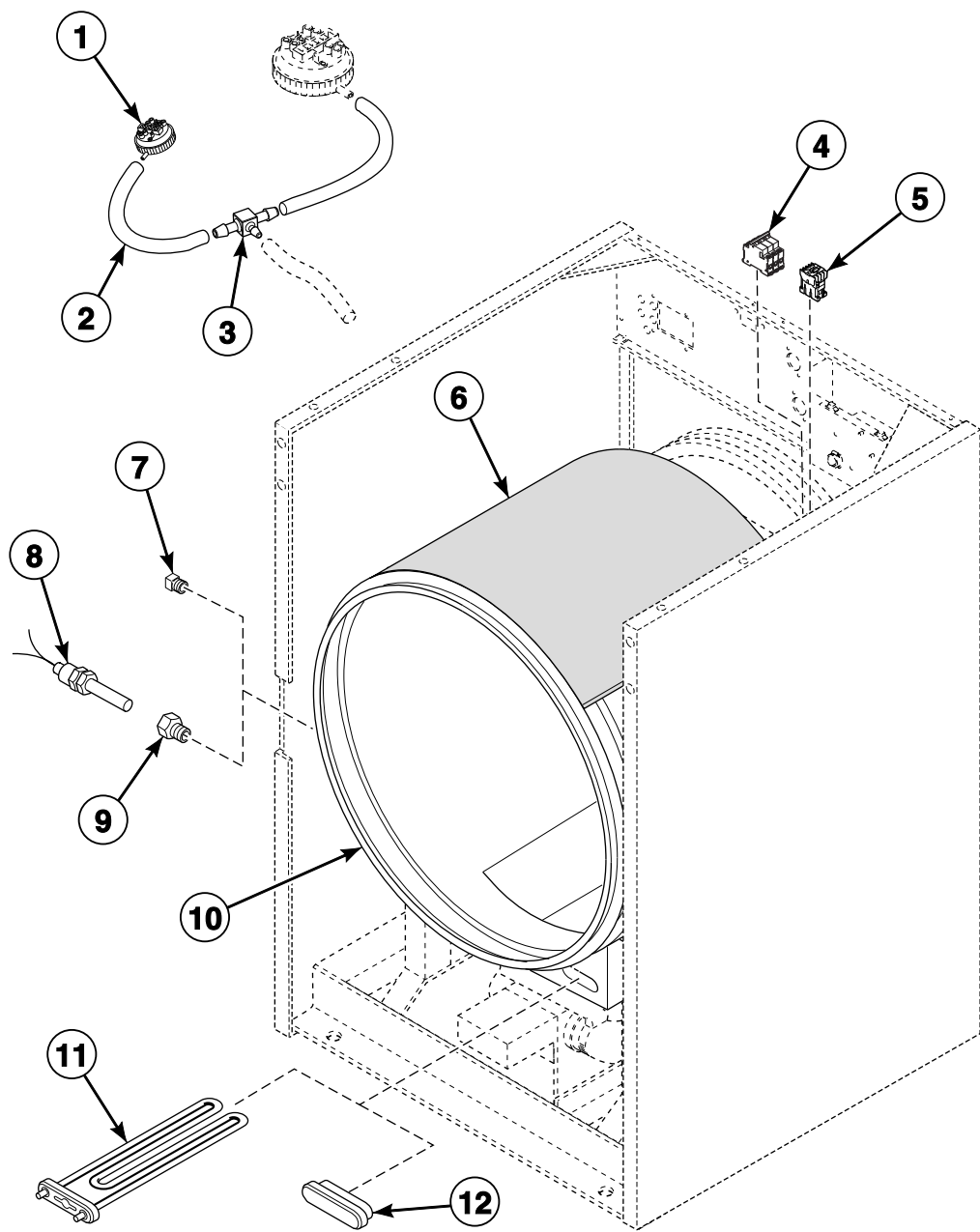
Motor - Design 2 and 3 Models



CHM3290PB_F8330701

SCL 1 P42

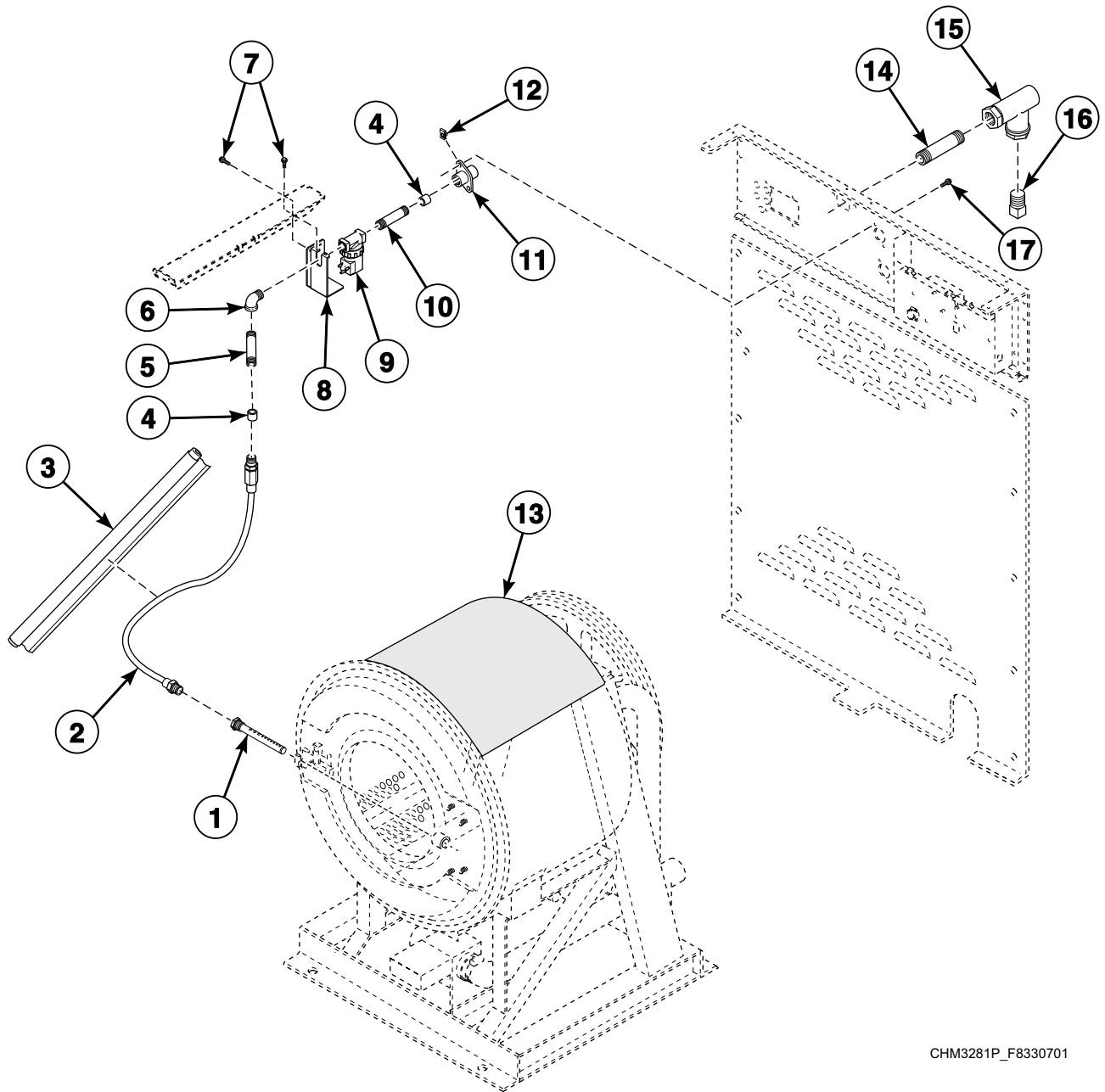
Electric Heat Option



CHM3319P_F8330701

SCL 1 P43

Steam Heat Option



CHM3281P_F8330701

SCL 1 P44