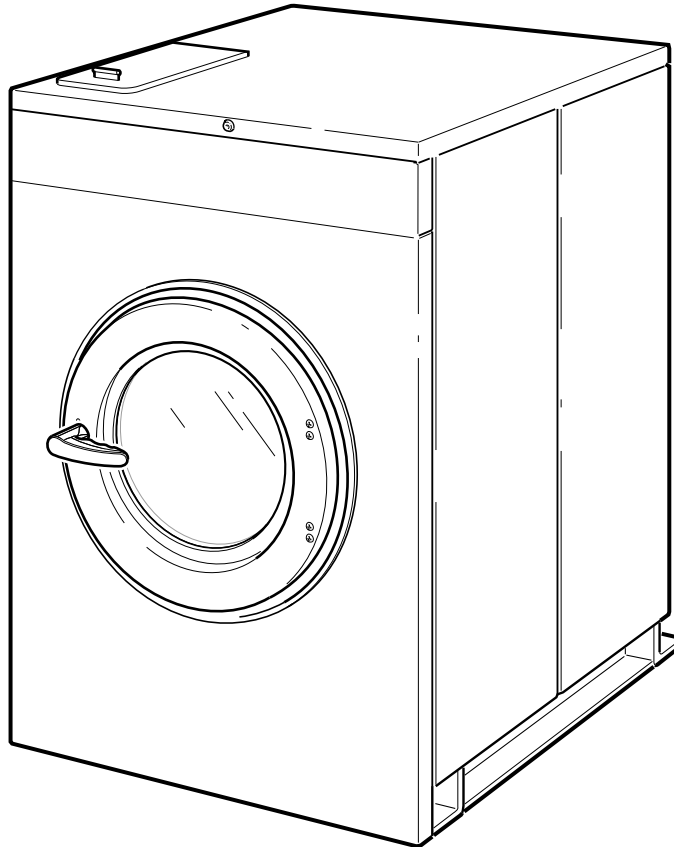


# Washer-Extractor

Cabinet Hardmount **SCL 2**



CHM1772C\_F8354701

## Parts Ordering Information

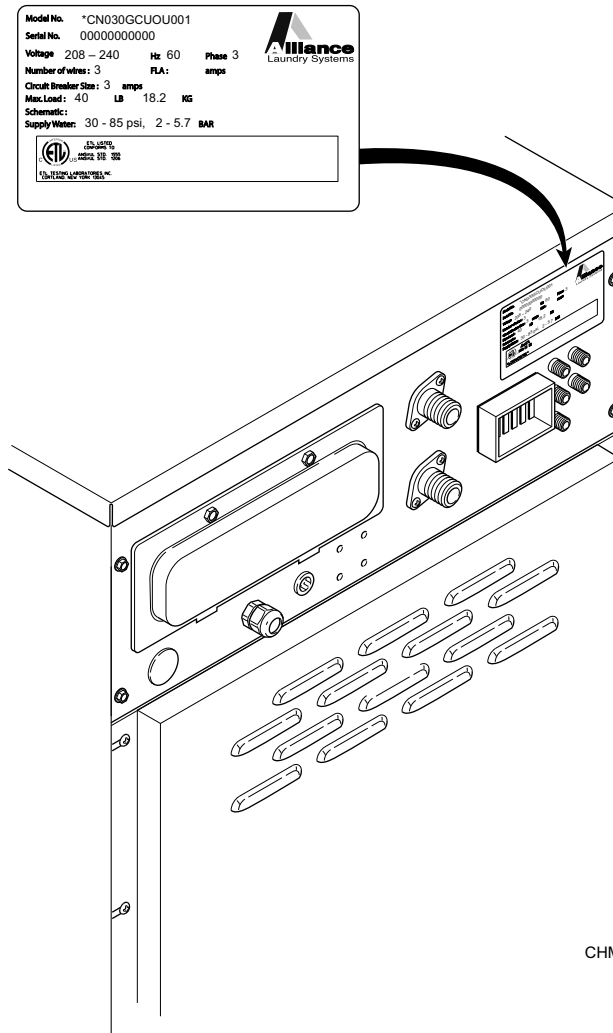
If literature or replacement parts are required, contact the source from whom the machine was purchased or contact Alliance Laundry Systems at (920) 748-3950 for the name and address of the nearest authorized parts distributor.

For technical assistance, call either of the numbers listed below:

(920) 748-3121 Ripon, Wisconsin  
+32 56 41 20 54 Wevelgem, Belgium

## Nameplate Location

When calling or writing about your product, be sure to mention model and serial numbers. Model and serial numbers are located on nameplate(s) as shown.



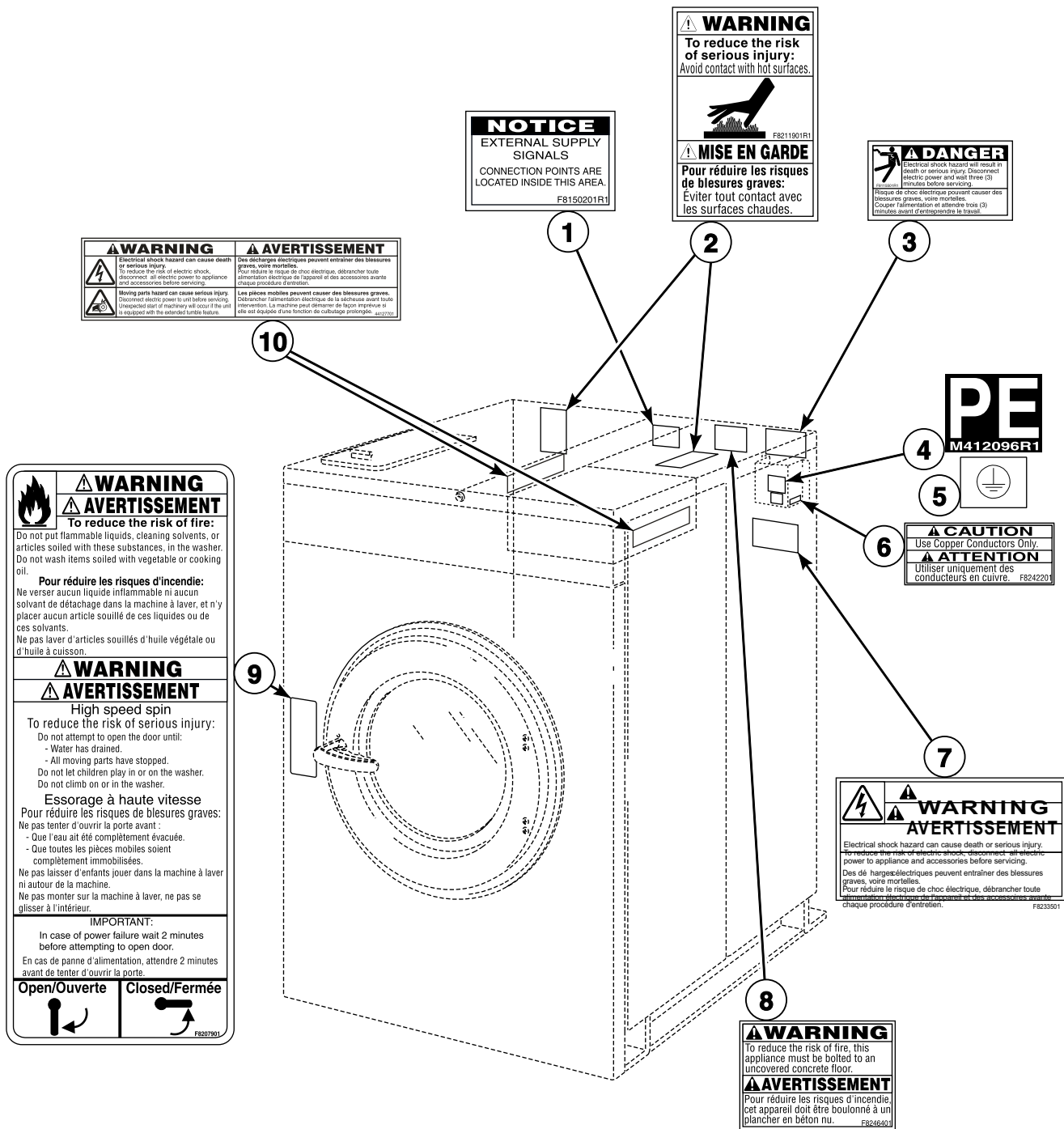
CHM3025P\_F8354701

## Model Identification

Information in this manual is applicable to these washer-extractor models:

HCD020JD2	SCN020JC2	SCU020JC2	SCU040JC2
SCD040JDF	SCN020JCF	SCU020JCF	SCU040JCF
SCL020JC2	SCN020JCV	SCU020JCV	SCU040JCV
SCL020JCF	SCN020JD2	SCU020JD2	SCU040JD2
SCL020JD2	SCN020JDF	SCU020JDF	SCU040JDF
SCL020JDF	SCN020JEF	SCU020JDV	SCU040JDV
SCL020JE2	SCN020JXF	SCU020JE2	SCU040JE2
SCL020JEF	SCN020JY2	SCU020JEF	SCU040JEF
SCL020JX2	SCN020JYF	SCU020JEV	SCU040JEV
SCL020JXF	SCN020JYV	SCU020JL2	SCU040JL2
SCL020JYF	SCN030JC2	SCU020JLF	SCU040JLF
SCL030JC2	SCN030JCF	SCU020JLV	SCU040JLV
SCL030JCF	SCN030JCV	SCU020JX2	SCU040JX2
SCL030JD2	SCN030JD2	SCU020JXF	SCU040JXF
SCL030JDF	SCN030JDF	SCU020JXV	SCU040JXV
SCL030JE2	SCN030JE2	SCU020JY2	SCU040JY2
SCL030JEF	SCN030JEF	SCU020JYF	SCU040JYF
SCL030JX2	SCN030JX2	SCU020JYV	SCU040JYV
SCL030JXF	SCN030JXF	SCU030JC2	SCU060JC2
SCL030JY2	SCN030JY2	SCU030JCF	SCU060JCF
SCL030JYV	SCN030JYF	SCU030JCV	SCU060JCV
SCL040JC2	SCN030JYV	SCU030JD2	SCU060JD2
SCL040JCF	SCN040JC2	SCU030JDF	SCU060JDF
SCL040JCV	SCN040JCF	SCU030JDV	SCU060JDV
SCL040JD2	SCN040JCV	SCU030JE2	SCU060JE2
SCL040JDF	SCN040JD2	SCU030JEF	SCU060JEF
SCL040JE2	SCN040JDF	SCU030JEV	SCU060JEV
SCL040JEF	SCN040JE2	SCU030JL2	SCU060JL2
SCL040JEV	SCN040JEF	SCU030JLF	SCU060JLF
SCL040JX2	SCN040JXF	SCU030JLV	SCU060JLV
SCL040JXF	SCN040JY2	SCU030JX2	SCU060JX2
SCL040JXV	SCN040JYF	SCU030JXF	SCU060JXF
SCL040JYF	SCN040JYV	SCU030JXV	SCU060JXV
SCL060JC2	SCN060JC2	SCU030JY2	SCU060JY2
SCL060JCF	SCN060JCF	SCU030JYF	SCU060JYF
SCL060JD2	SCN060JCV	SCU030JYV	SCU060JYV
SCL060JDF	SCN060JD2		
SCL060JE2	SCN060JDF		
SCL060JXF	SCN060JEF		
SCL060JYF	SCN060JX2		
	SCN060JXF		
	SCN060JY2		
	SCN060JYF		
	SCN060JYV		

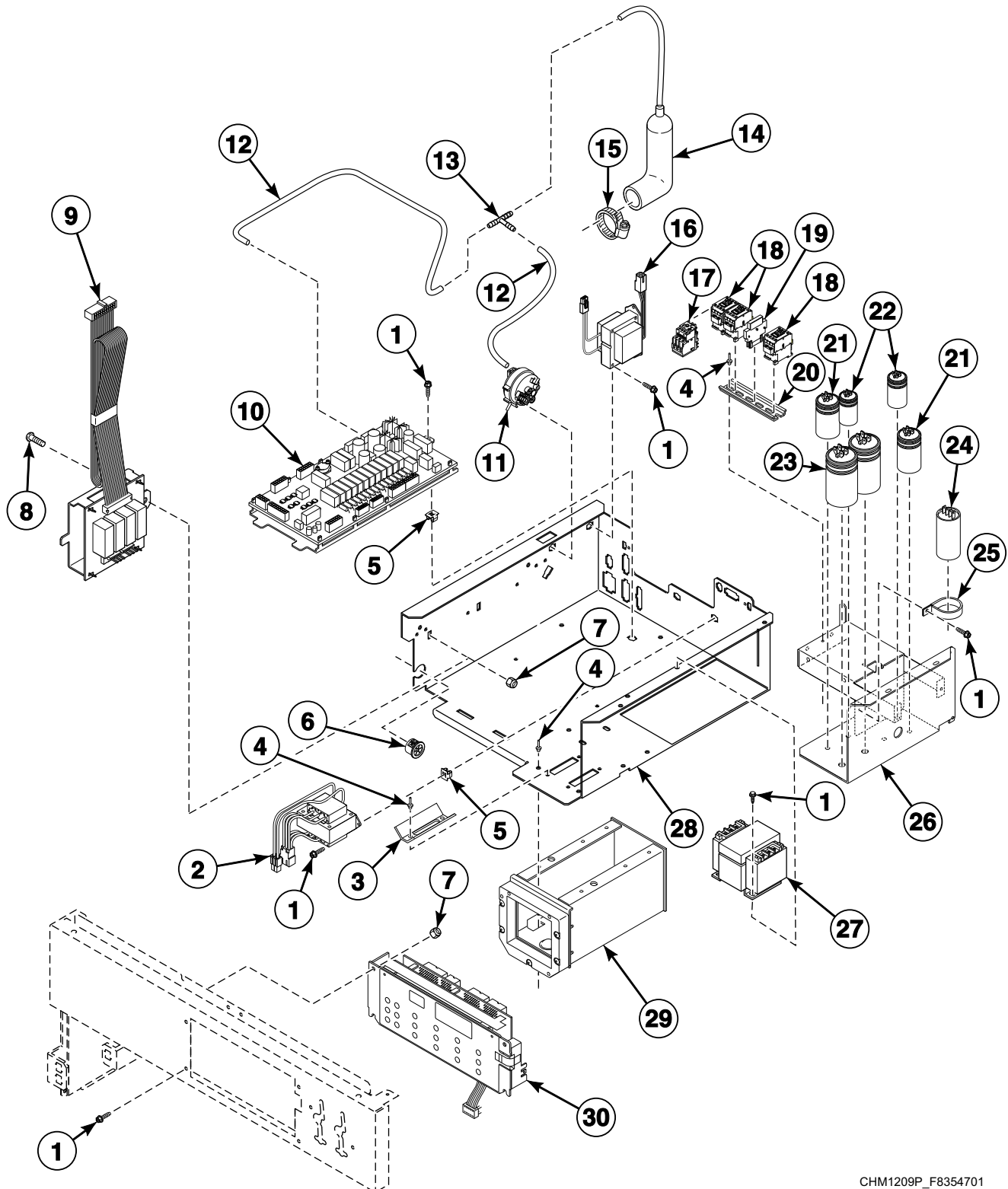
# Decals



CHM3027P\_F8354701

SCL 2 P1

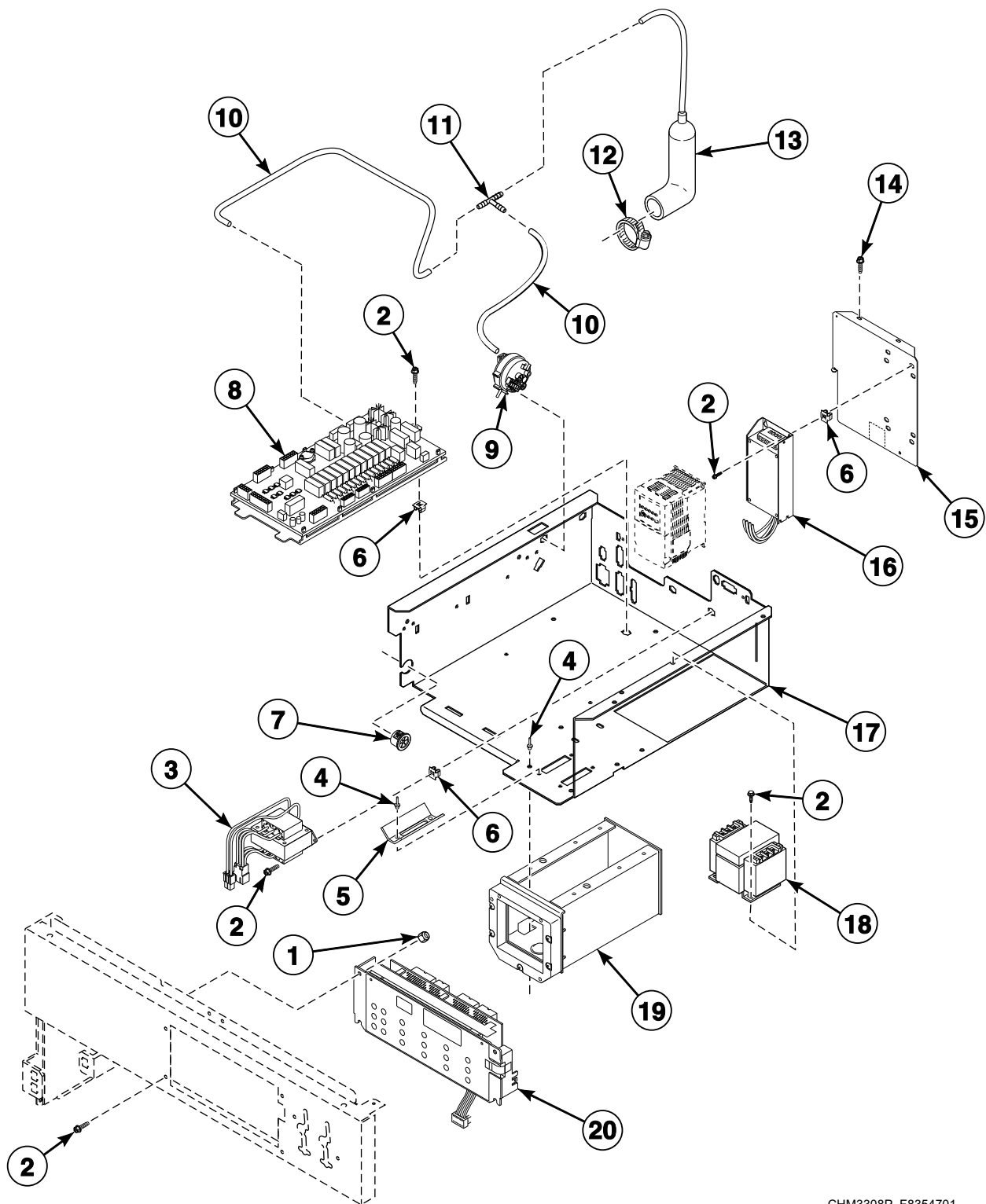
# Control Module - 2 Speed



CHM1209P\_F8354701

SCL 2 P2

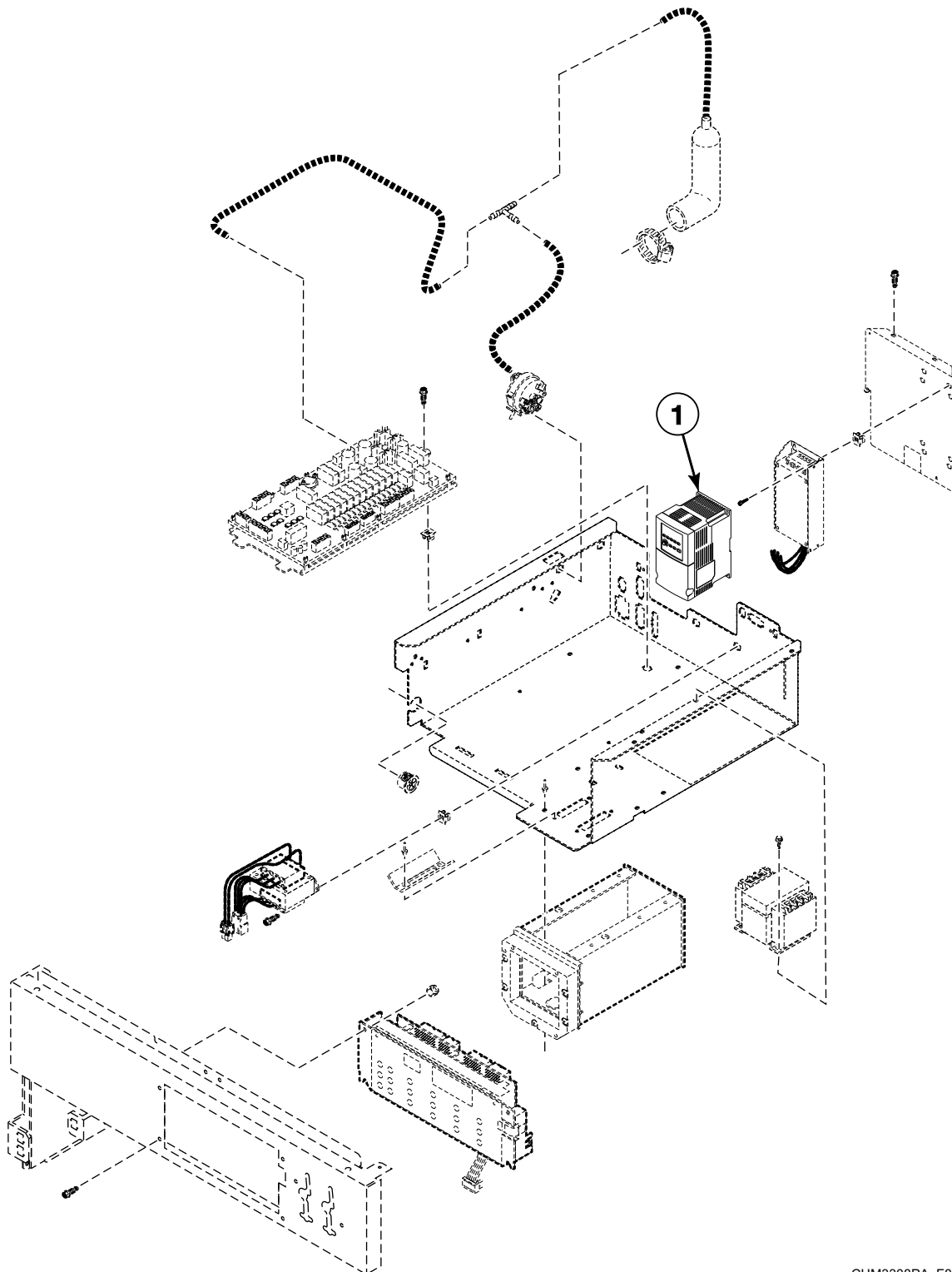
# Control Module - F and V-Speed Design 1 Models



CHM3308P\_F8354701

SCL 2 P3

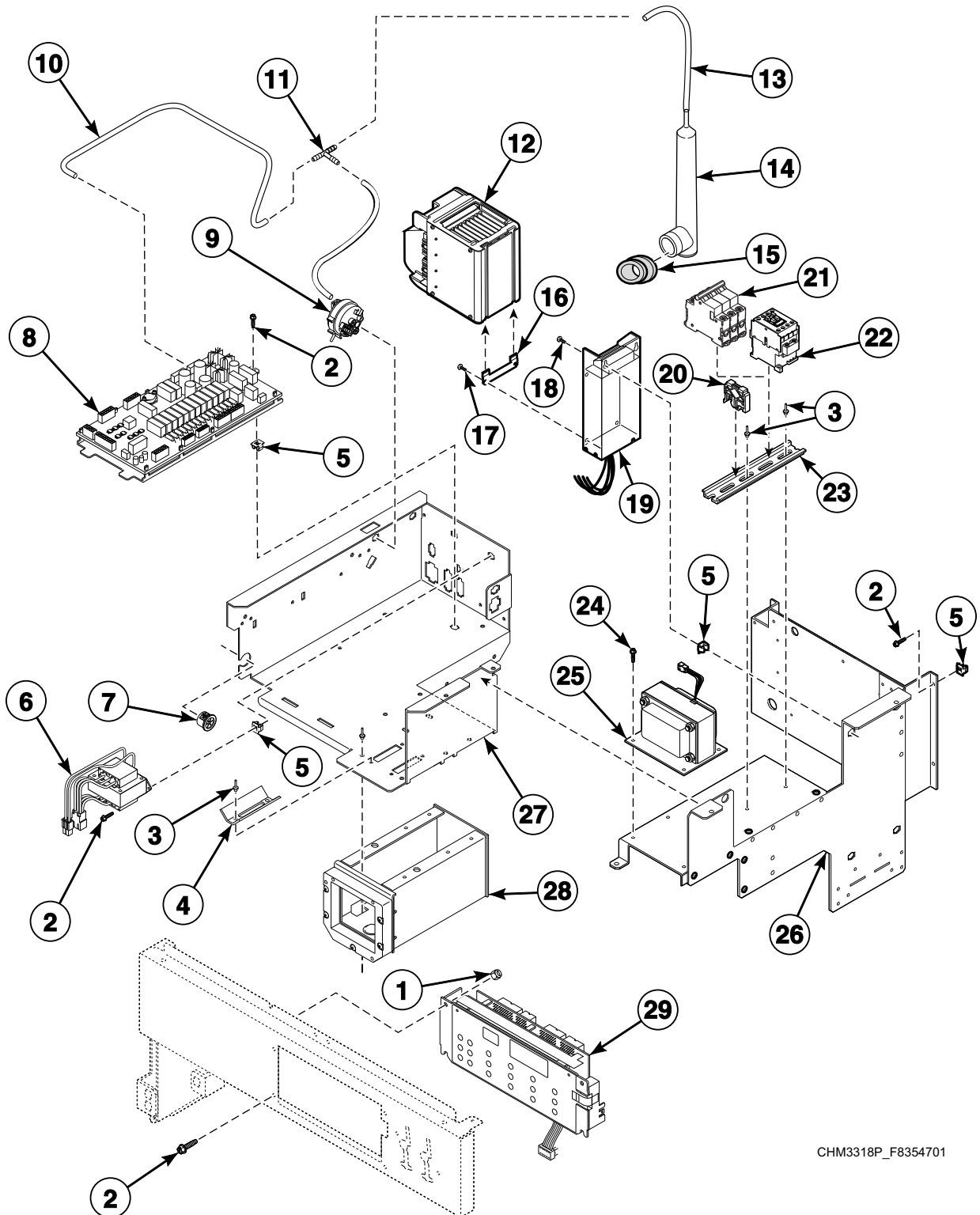
# PowerFlex 40 Drive - F and V-Speed Design 1 Models



CHM3308PA\_F8354701

SCL 2 P4

# Control Module - Design 2 and 3 Models

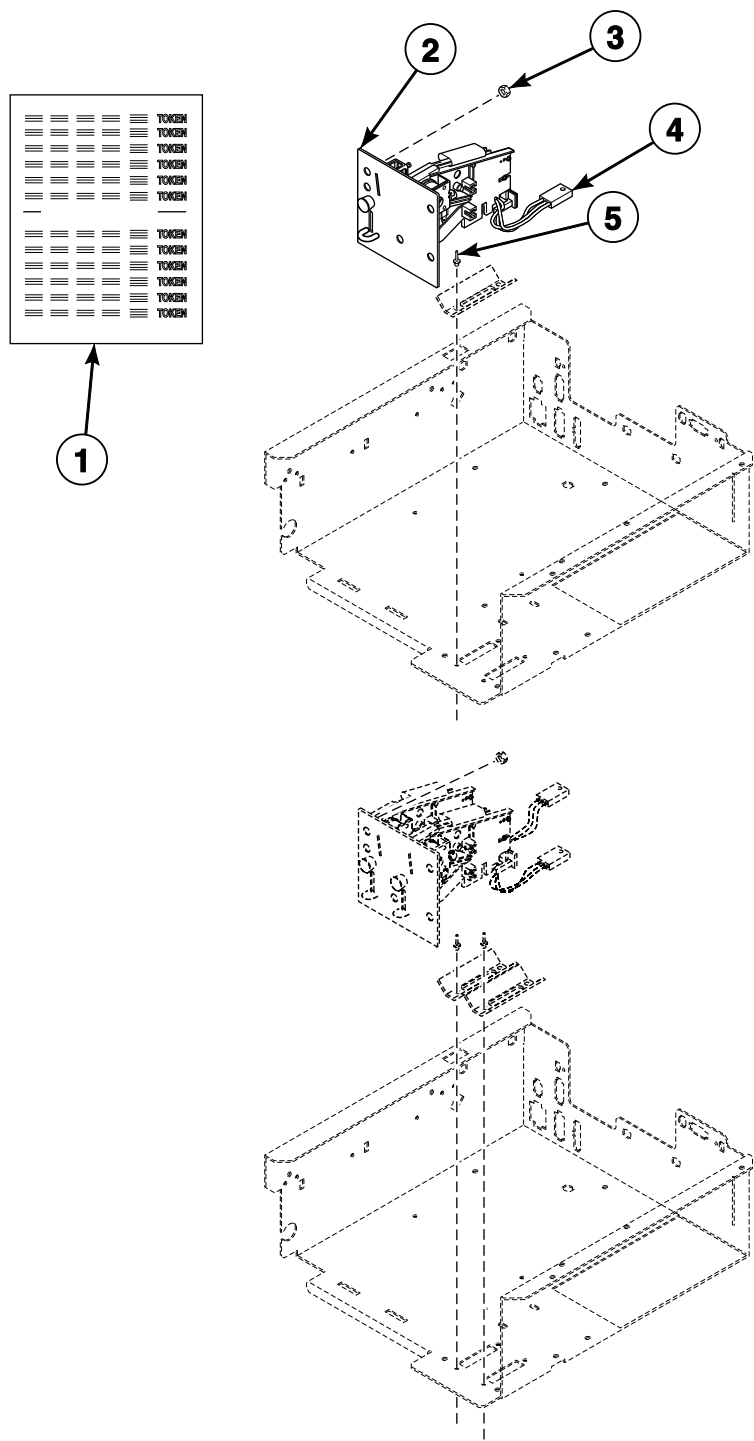


CHM3318P\_F8354701

SCL 2 P5



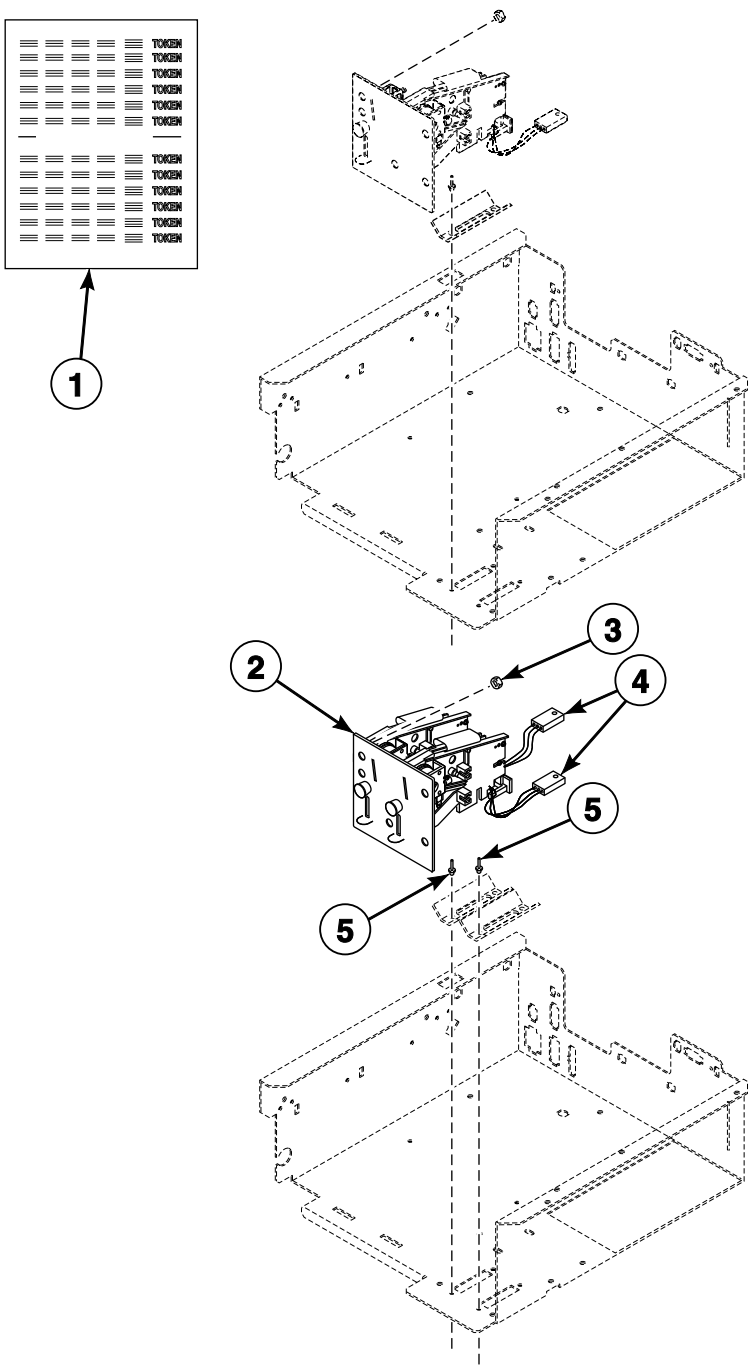
Flush Mount Coin Meter Assembly (Drawing 1 of 2)



CHM3088P\_F8354701

SCL 2 P6

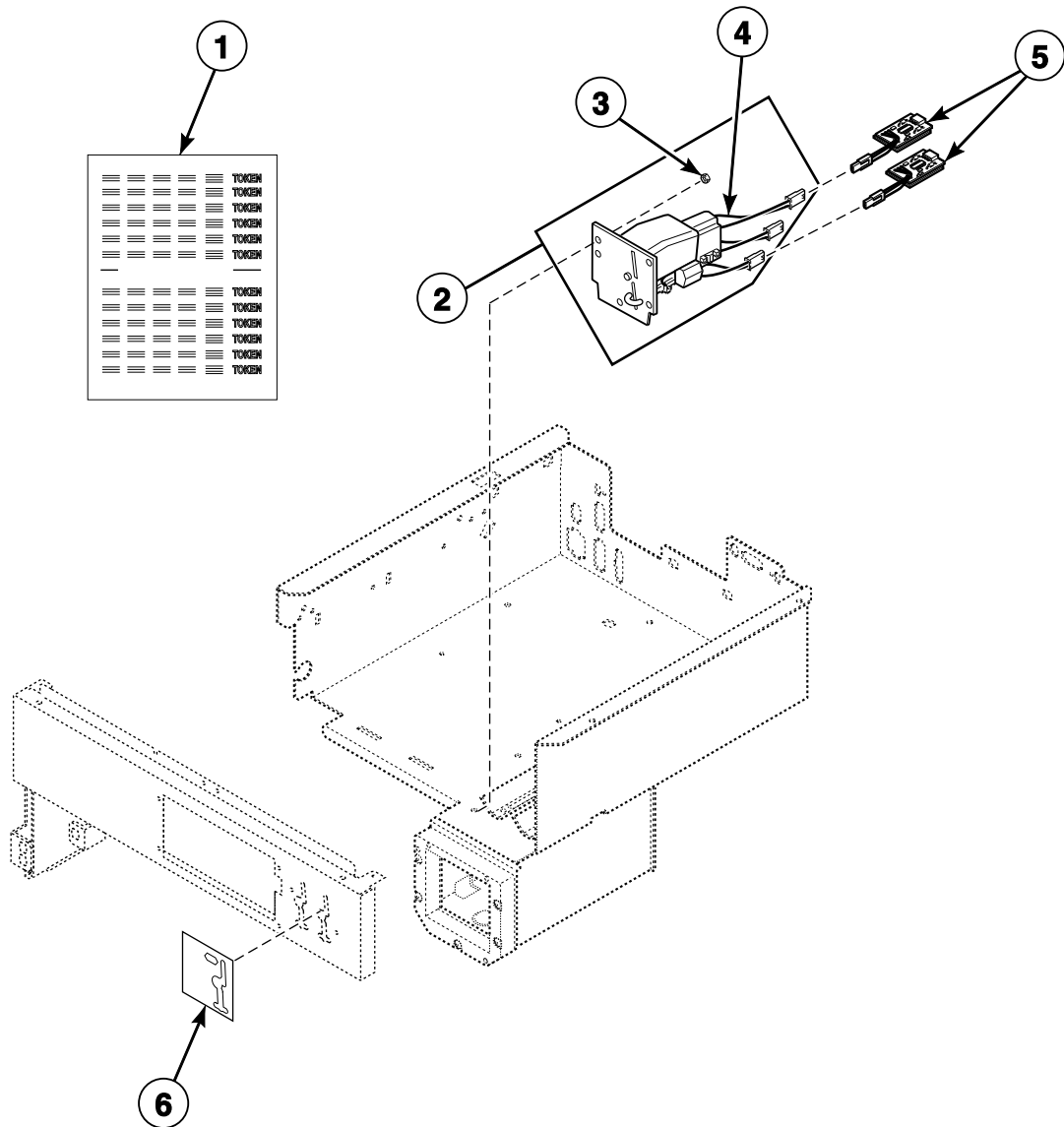
# Flush Mount Coin Meter Assembly (Drawing 2 of 2)



CHM3088PA\_F8354701

SCL 2 P7

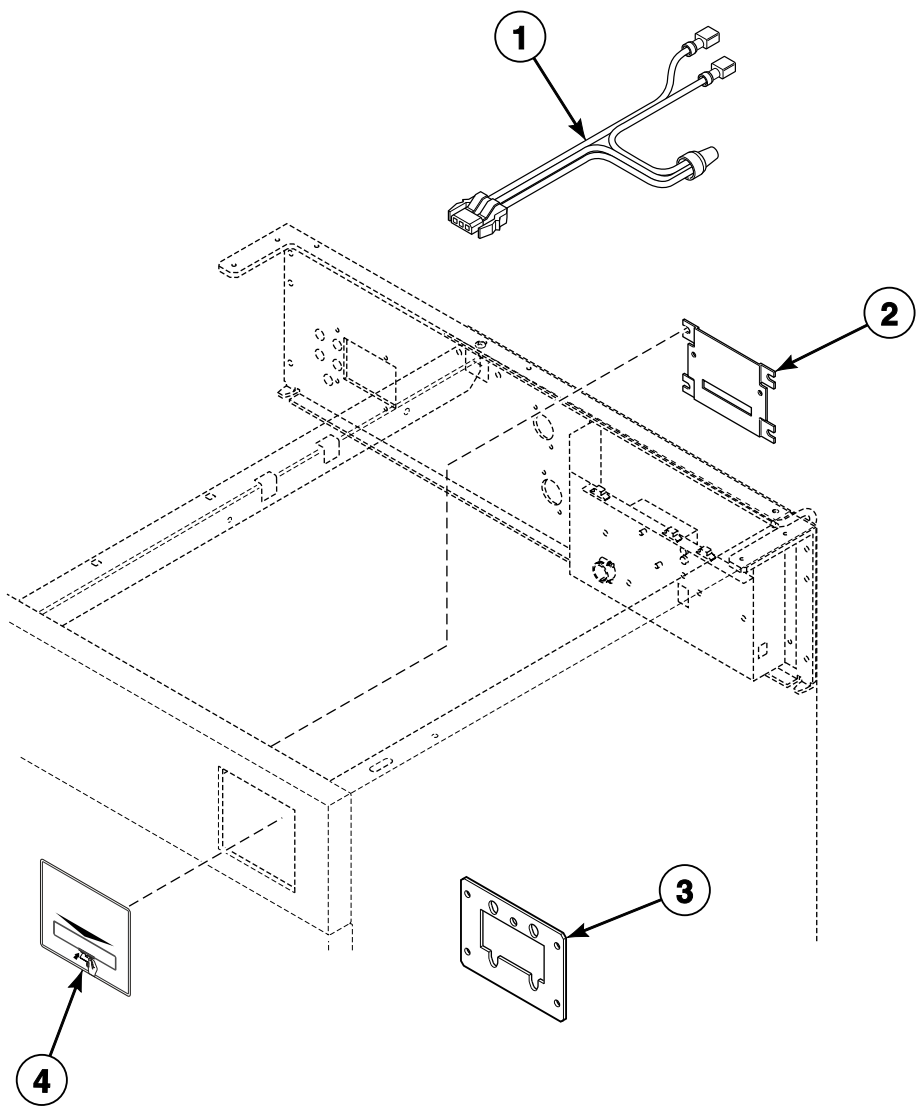
# Electronic Coin Meter Assembly



CHM3089P\_F8354701

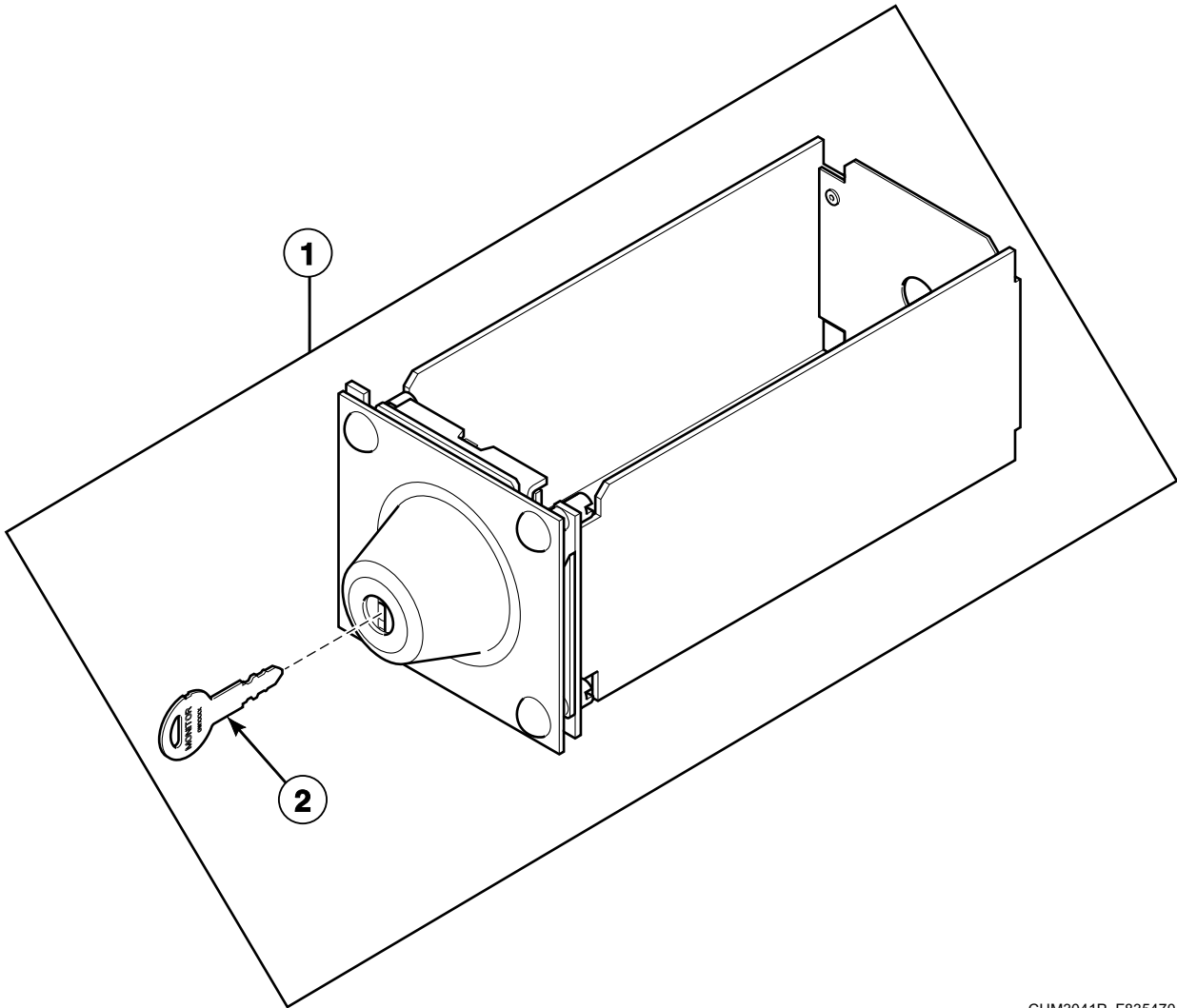
SCL 2 P8

# Card Reader - JY Models



CHM3216P\_F8354701

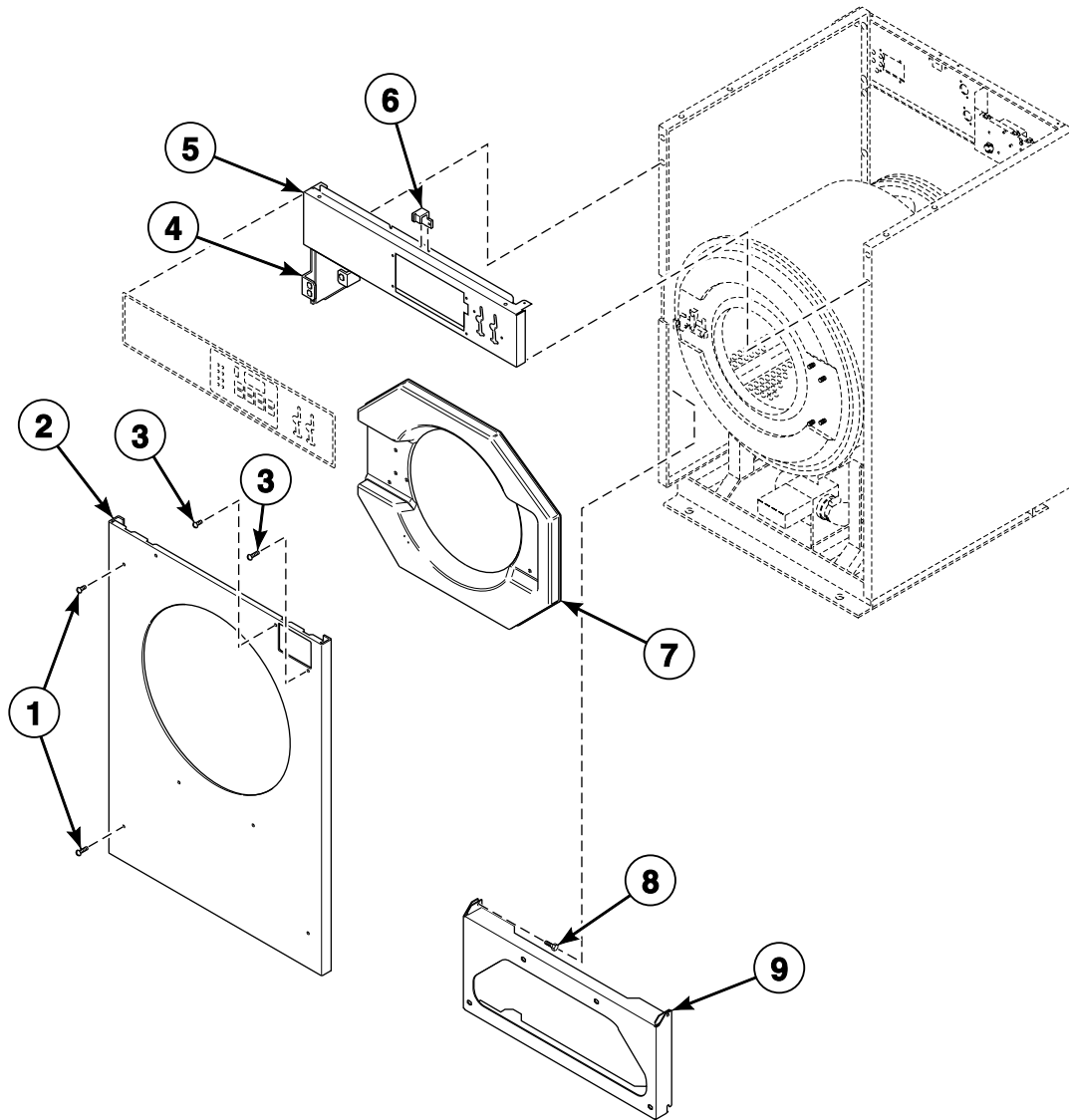
# Optional Coin Box



CHM3041P\_F8354701

SCL 2 P10

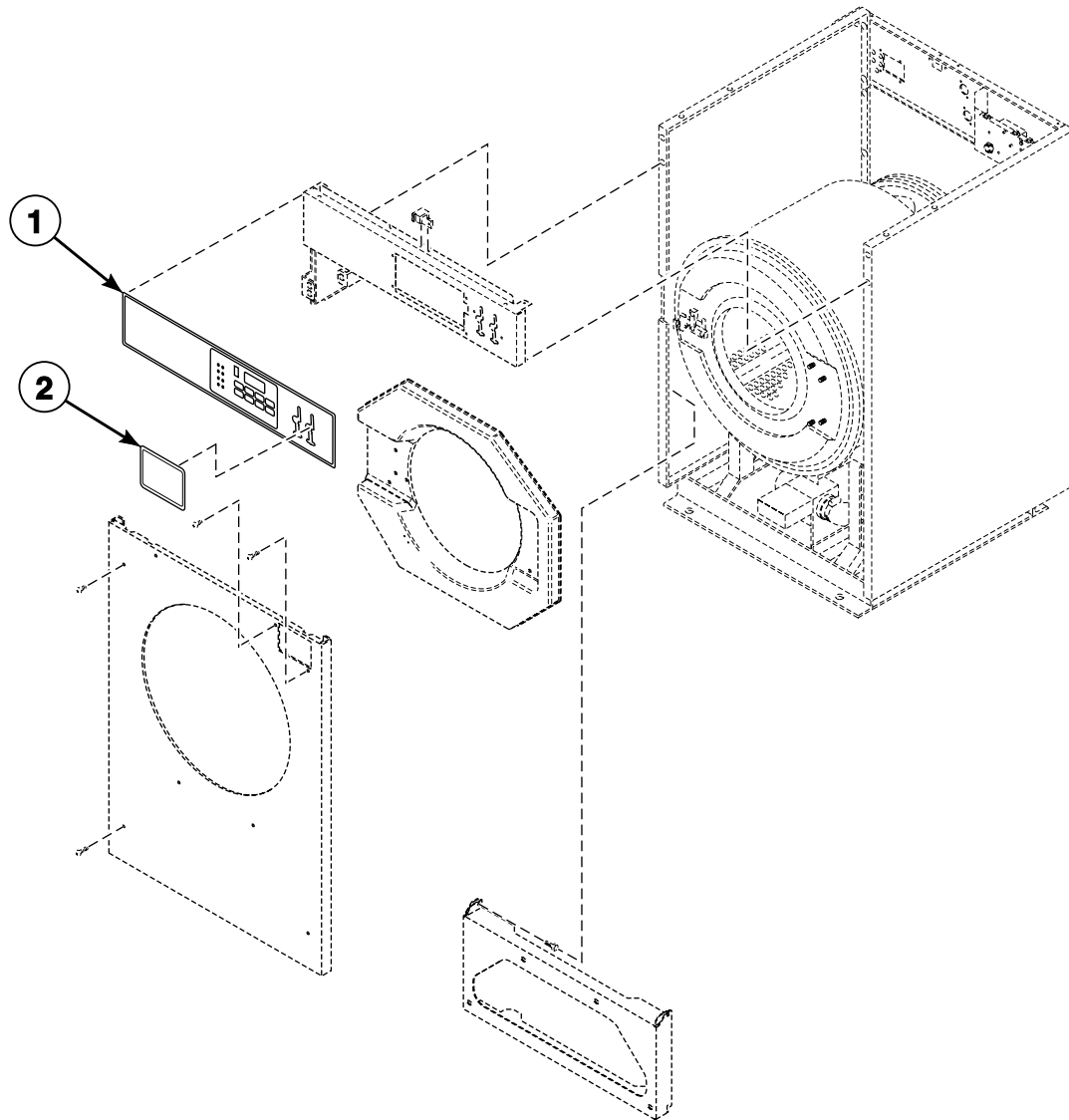
## Front Panels and Control Panel



CHM3091P\_F8354701

SCL 2 P11

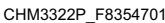
## Control Panel Overlays



CHM3173P\_F8354701

SCL 2 P12

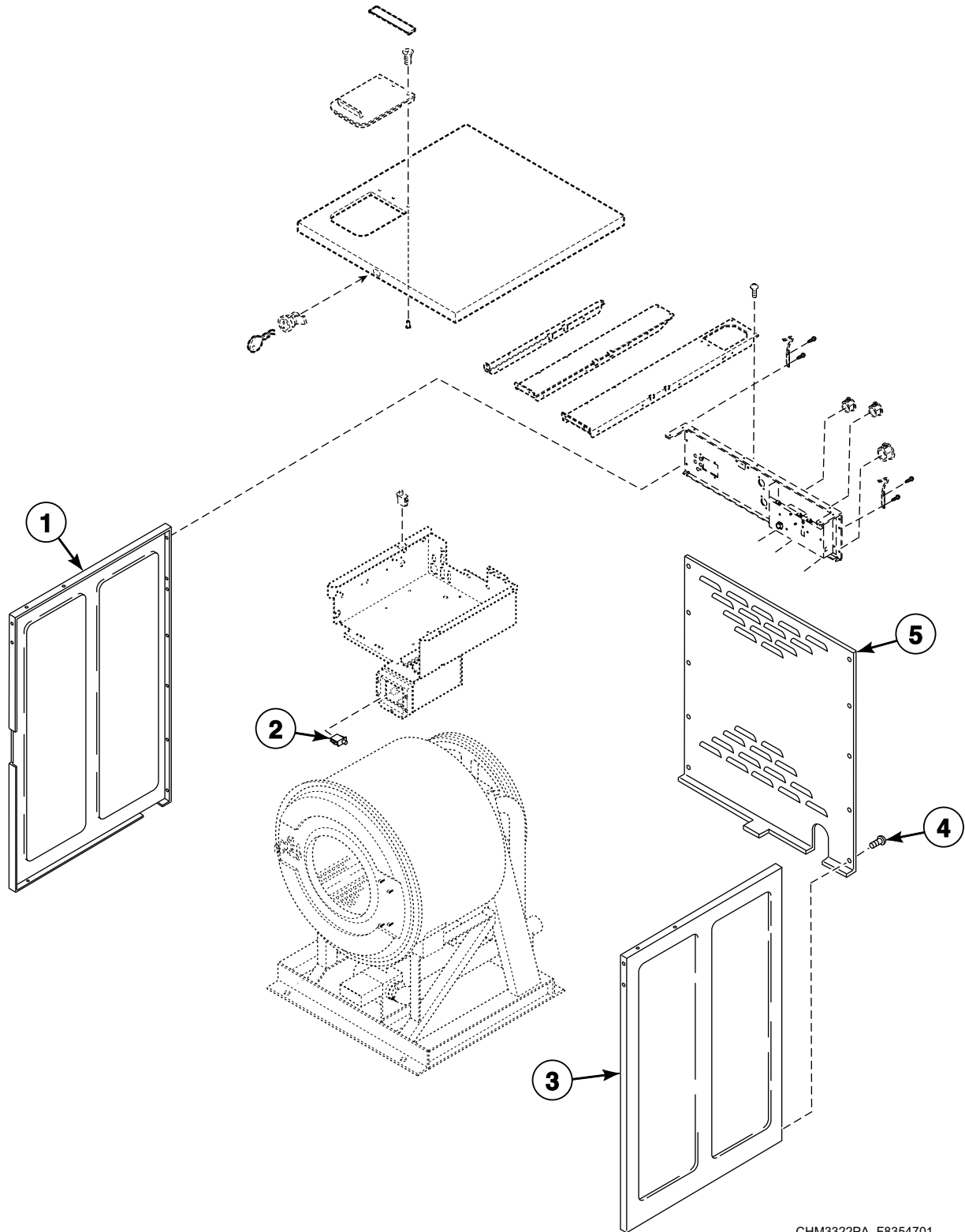
## Panels (Drawing 1 of 2)



# SCL 2 P13



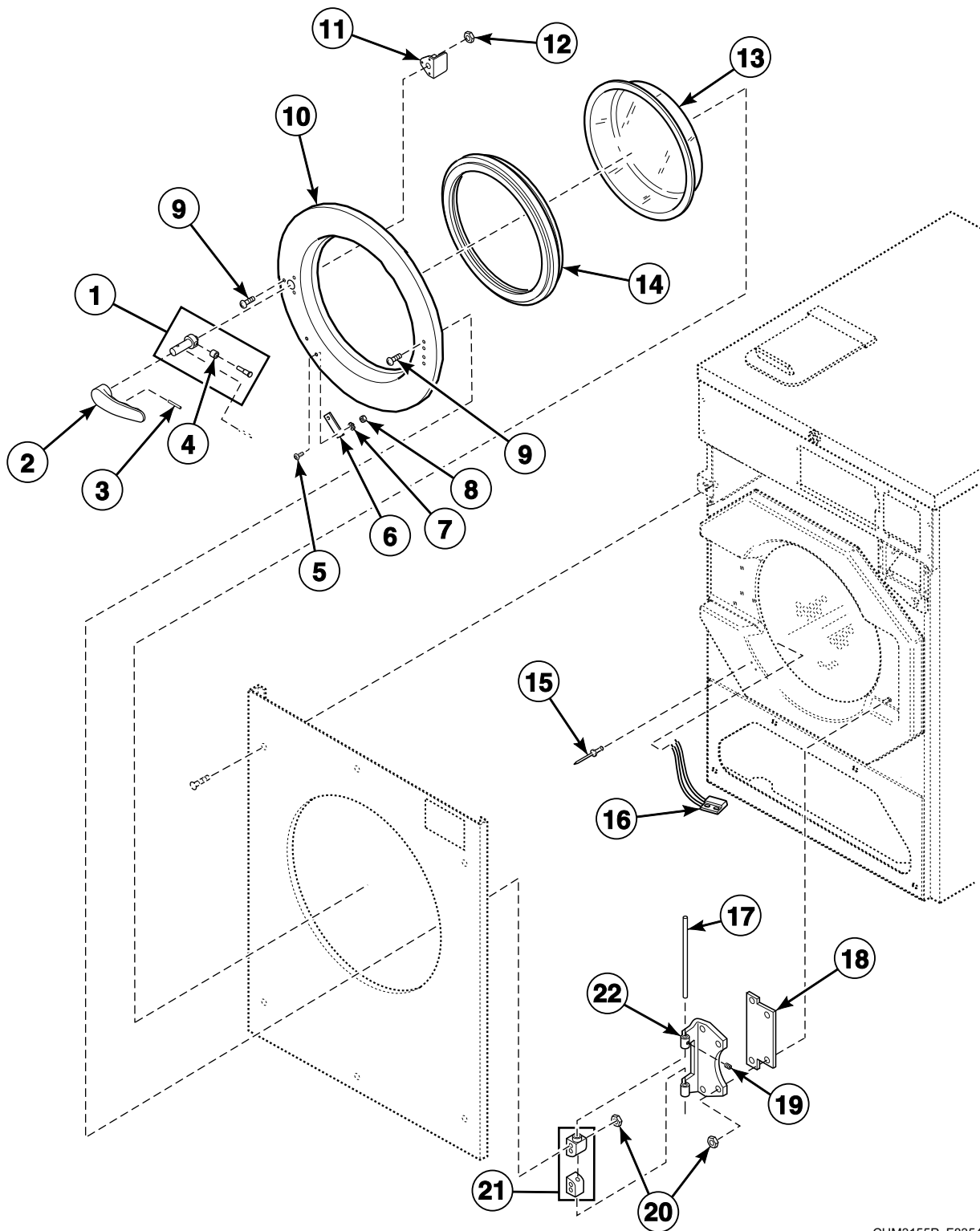
## Panels (Drawing 2 of 2)



CHM3322PA\_F8354701

SCL 2 P14

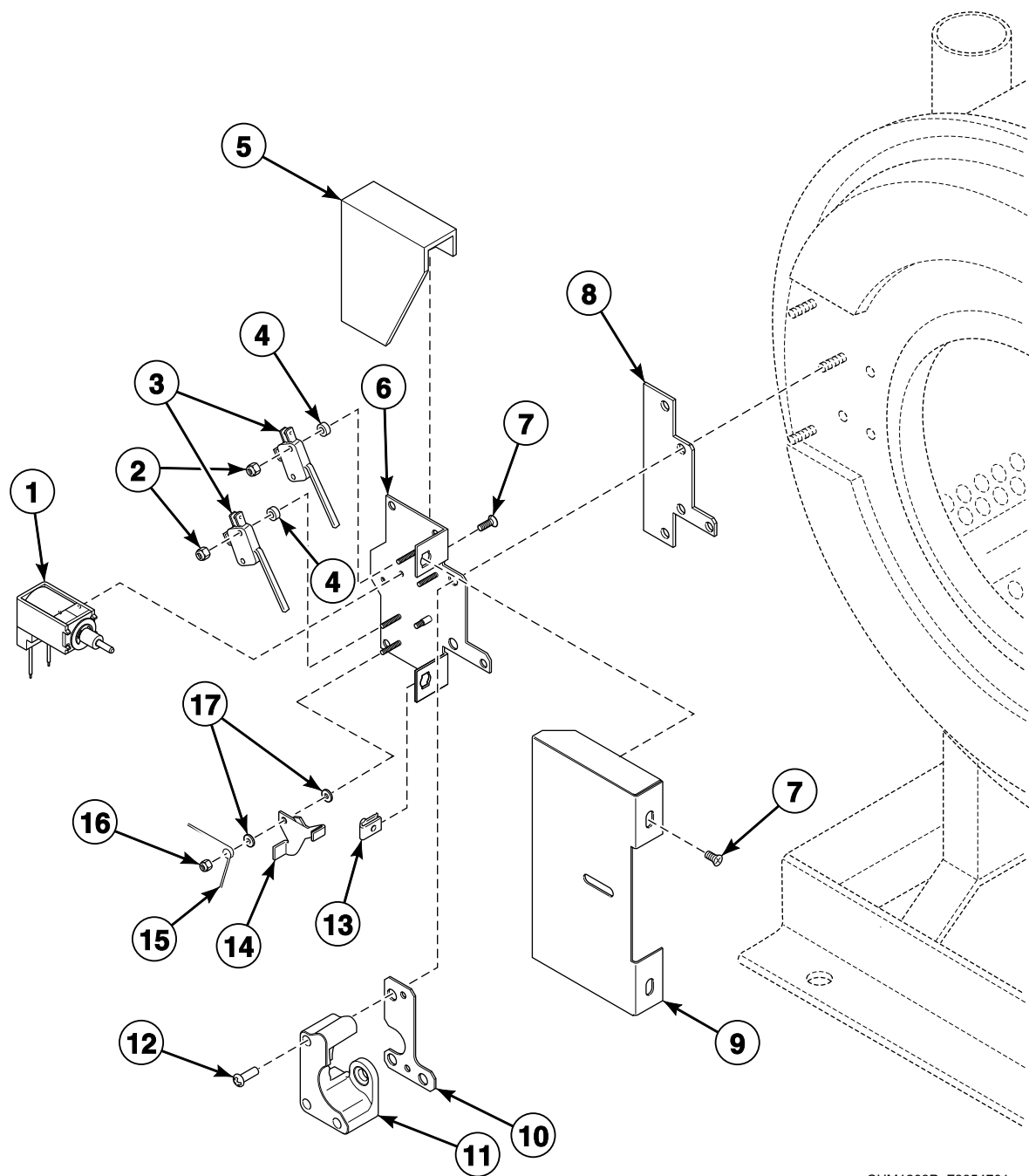
## Door



CHM3155P\_F8354701

SCL 2 P15

# Door Lock



CHM1208P\_F8354701

SCL 2 P16

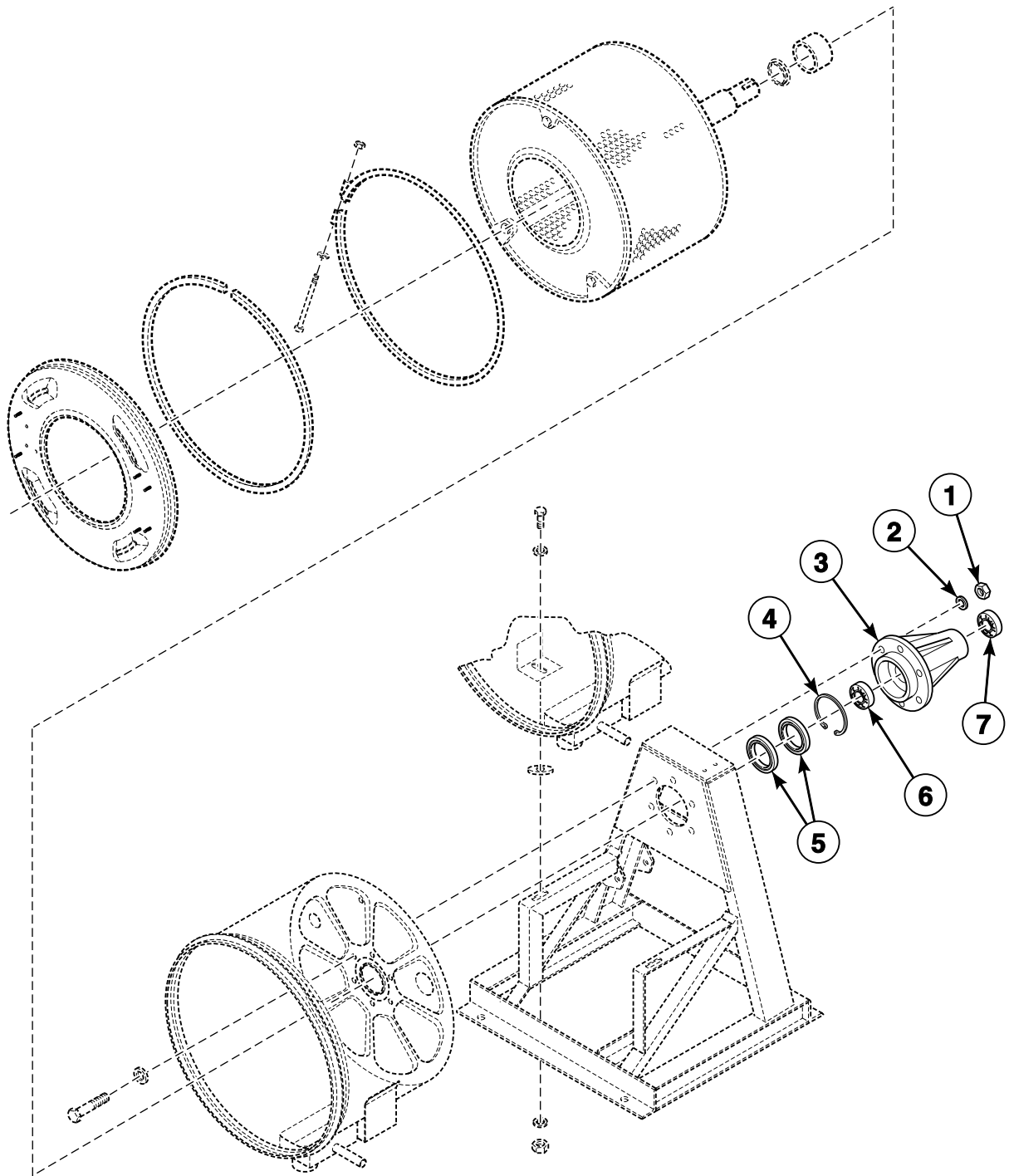
This exploded view diagram illustrates the assembly of a mechanical component. The parts are numbered as follows:

- 1**: A circular flange or end plate with four mounting tabs.
- 2**: A thin, circular ring or gasket.
- 3**: A larger circular ring or flange.
- 4**: A small pin or screw used to secure the ring.
- 5**: A small pin or screw used to secure the ring.
- 6**: A small pin or screw used to secure the ring.
- 7**: A cylindrical component, possibly a motor or actuator, with a textured surface.
- 8**: A small pin or screw used to secure the cylindrical component.
- 9**: A small pin or screw used to secure the cylindrical component.

The diagram shows the relative positions and assembly sequence of these components, with dashed lines indicating the alignment and path of assembly.

# SCL 2 P17

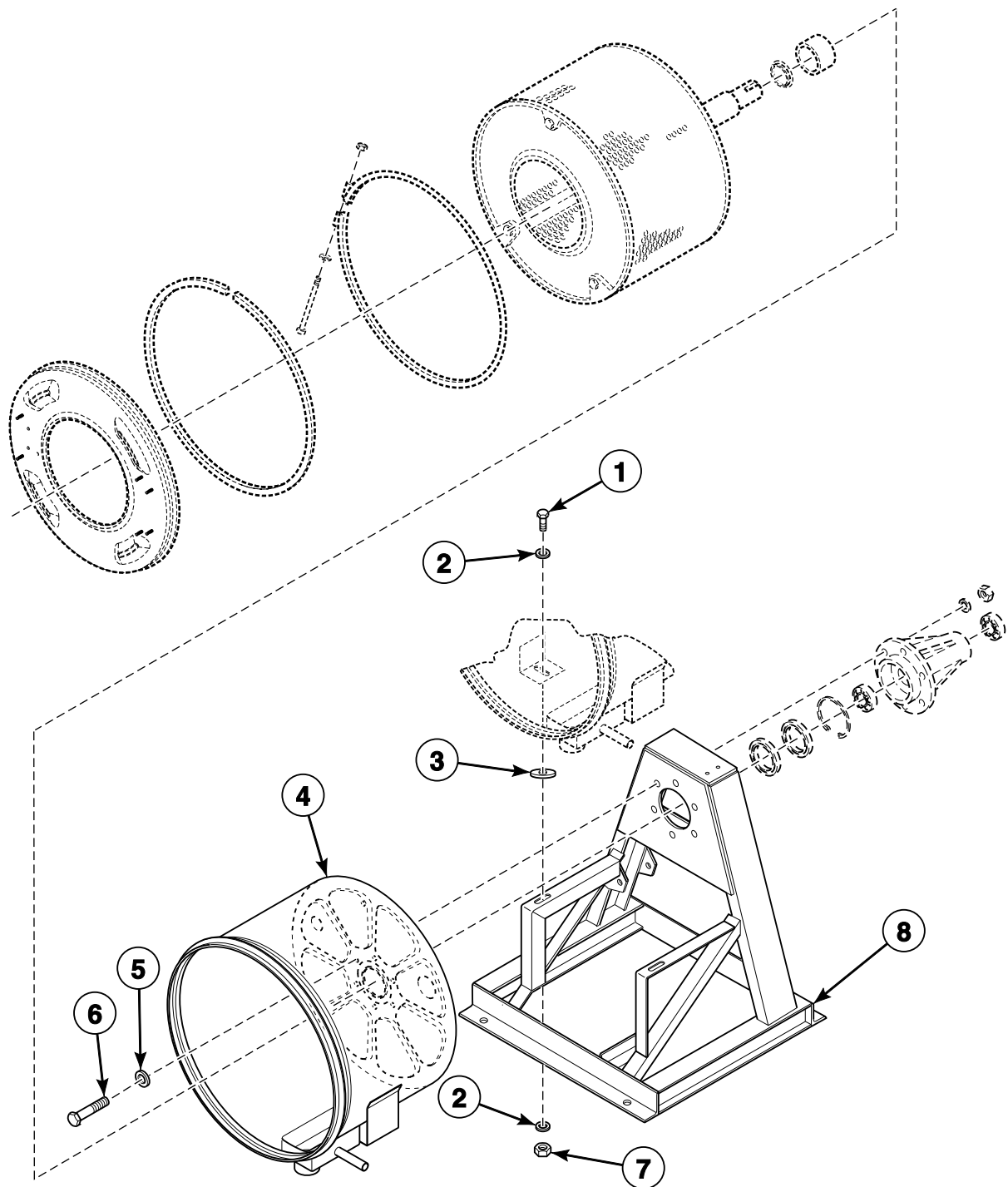
## Basket, Shell, Frame and Trunnion - Design 1 Models (Drawing 2 of 3)



CHM3153PA\_F8354701

# SCL 2 P18

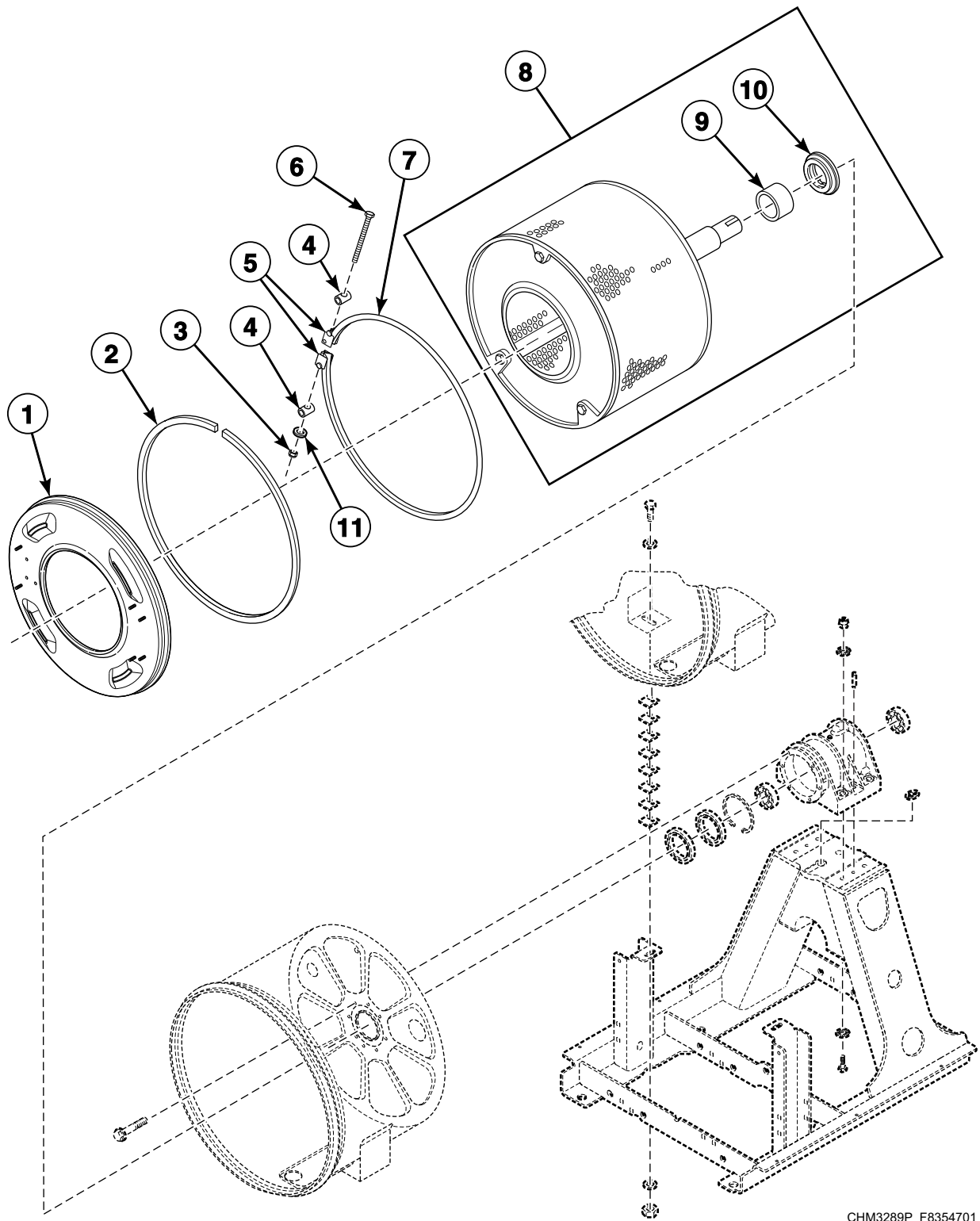
## Basket, Shell, Frame and Trunnion - Design 1 Models (Drawing 3 of 3)



CHM3153PB\_F8354701

SCL 2 P19

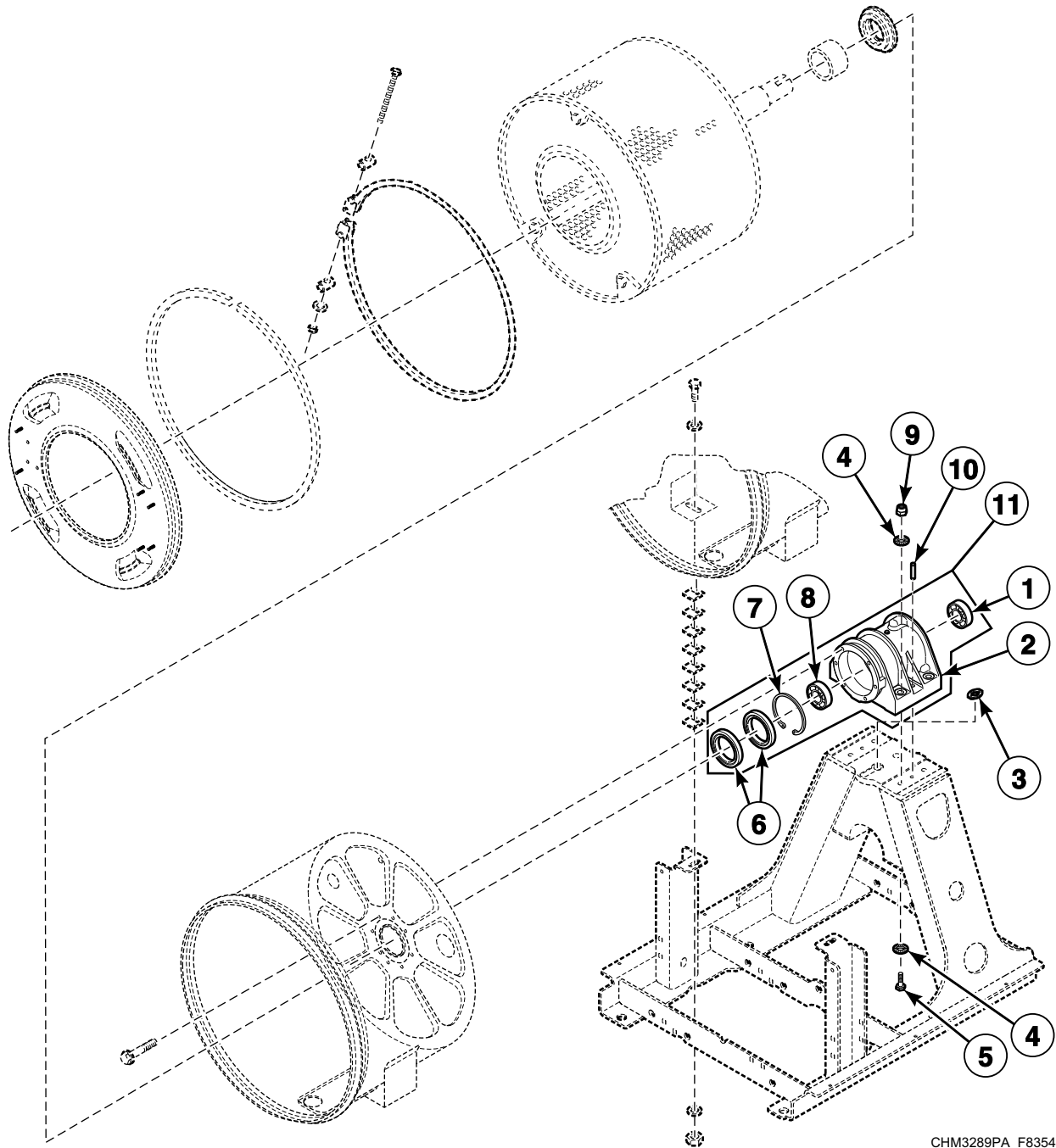
# Basket, Shell, Frame and Trunnion - Design 2 and 3 Models (Drawing 1 of 3)



CHM3289P\_F8354701

## SCL 2 P20

## Basket, Shell, Frame and Trunnion - Design 2 and 3 Models (Drawing 2 of 3)

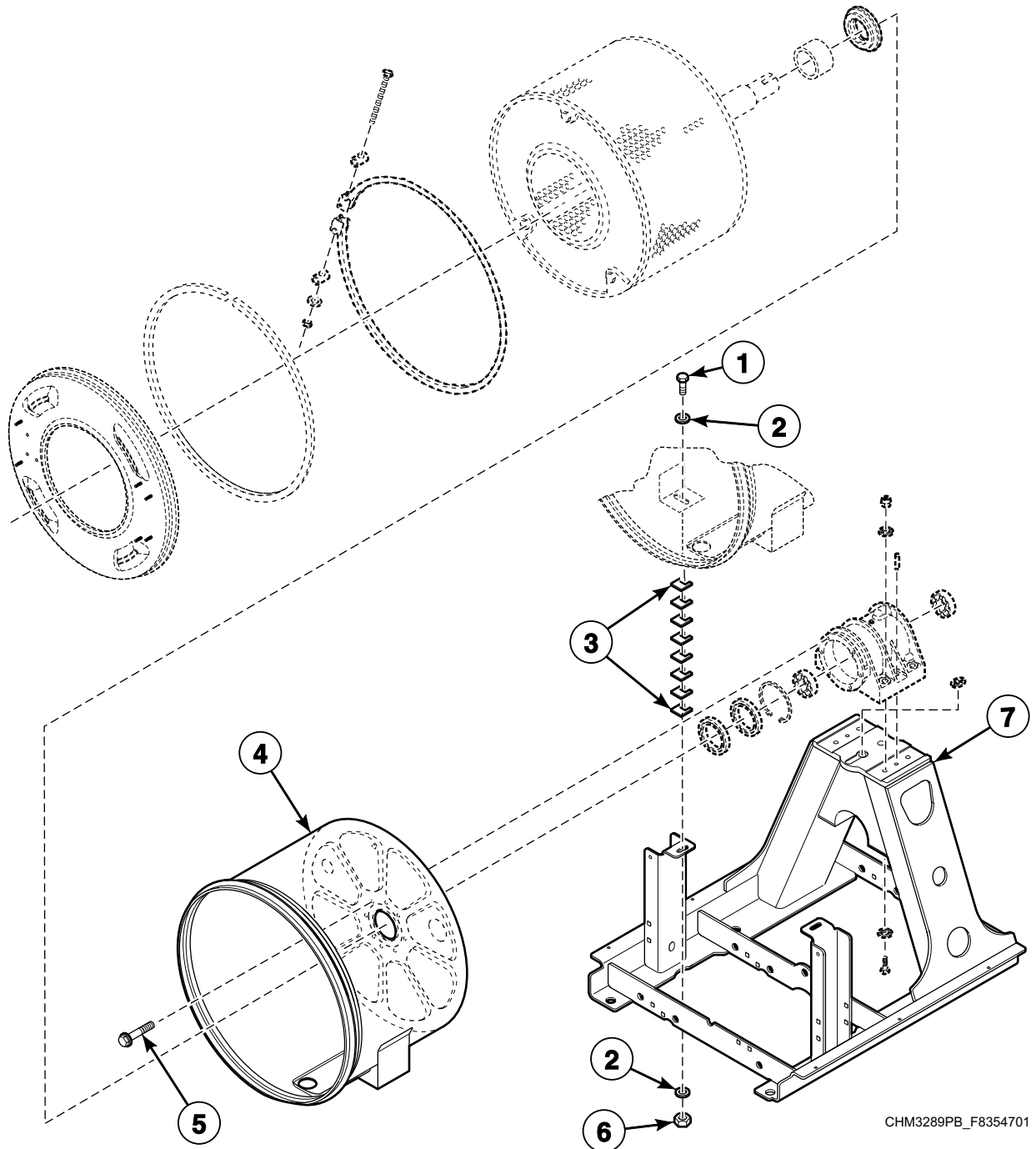


CHM3289PA\_F8354701

SCL 2 P21

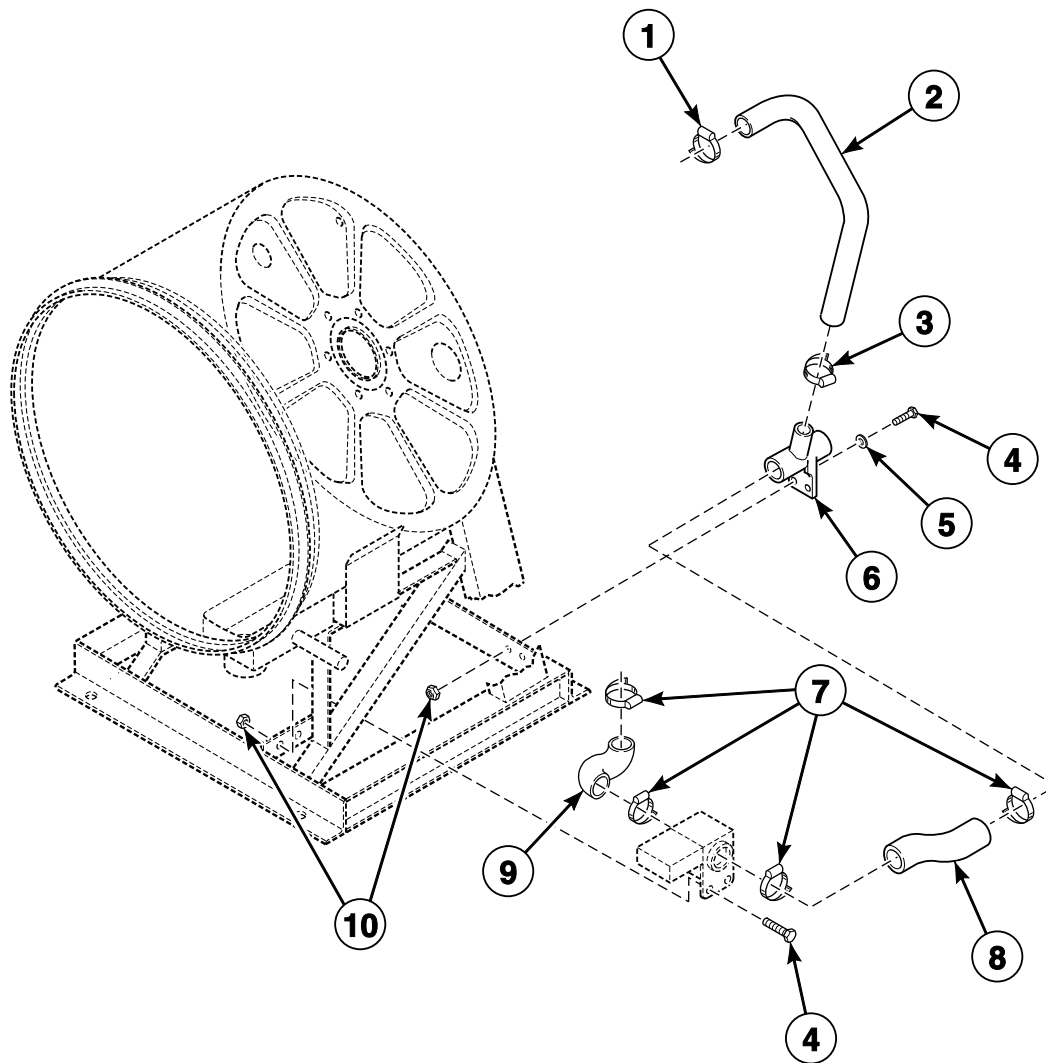


## Basket, Shell, Frame and Trunnion - Design 2 and 3 Models (Drawing 3 of 3)



SCL 2 P22

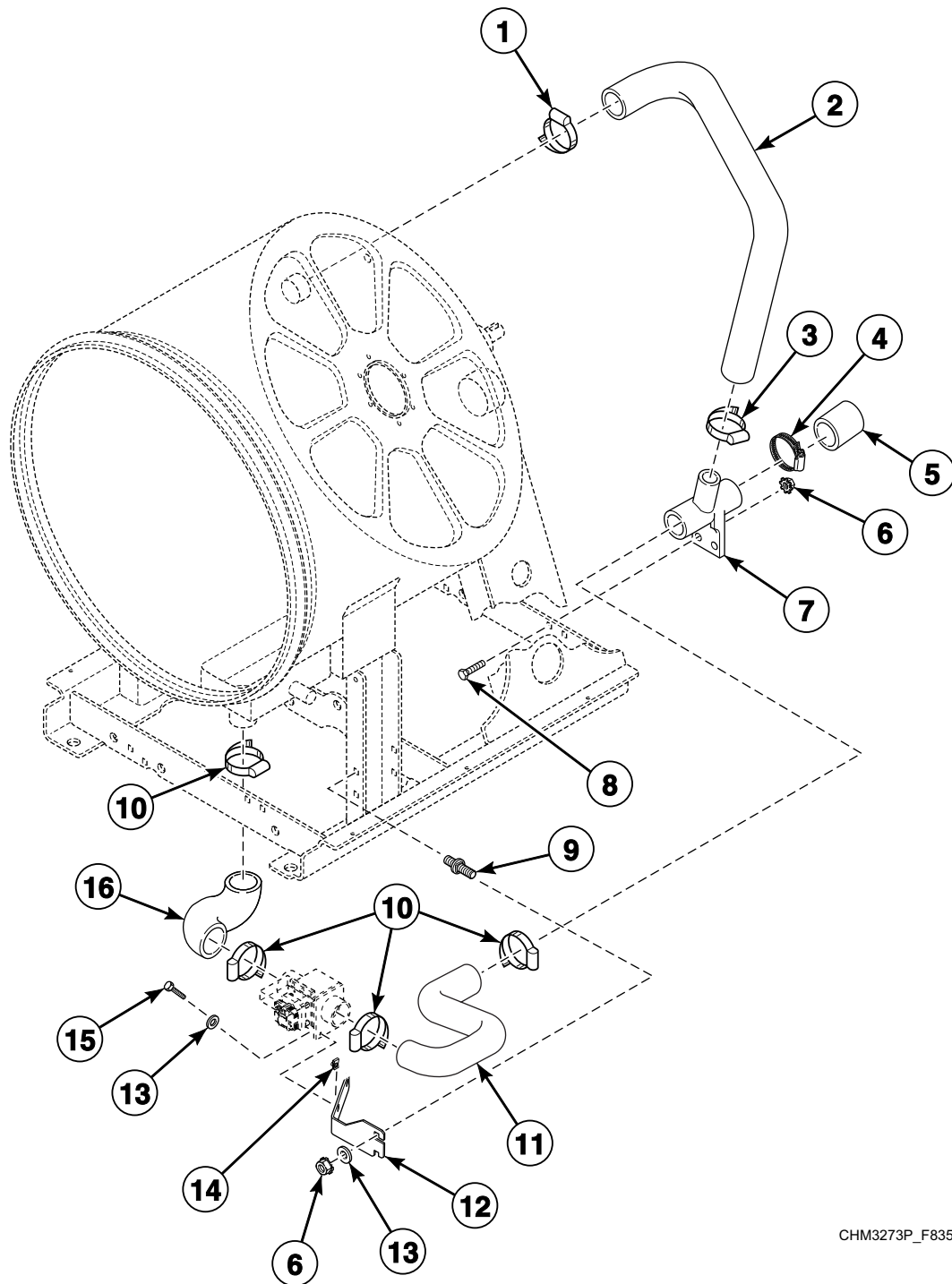
## Drain Plumbing - Design 1 Models



CHM3046P\_F8354701

SCL 2 P23

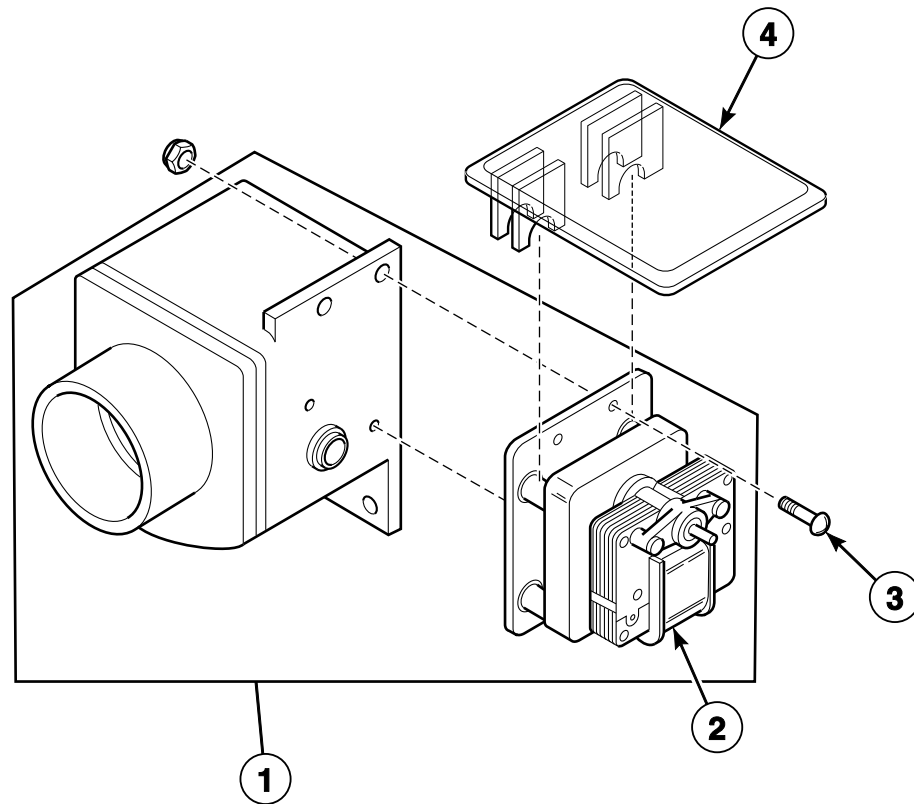
## Drain Plumbing - Design 2 and 3 Models



CHM3273P\_F8354701

SCL 2 P24

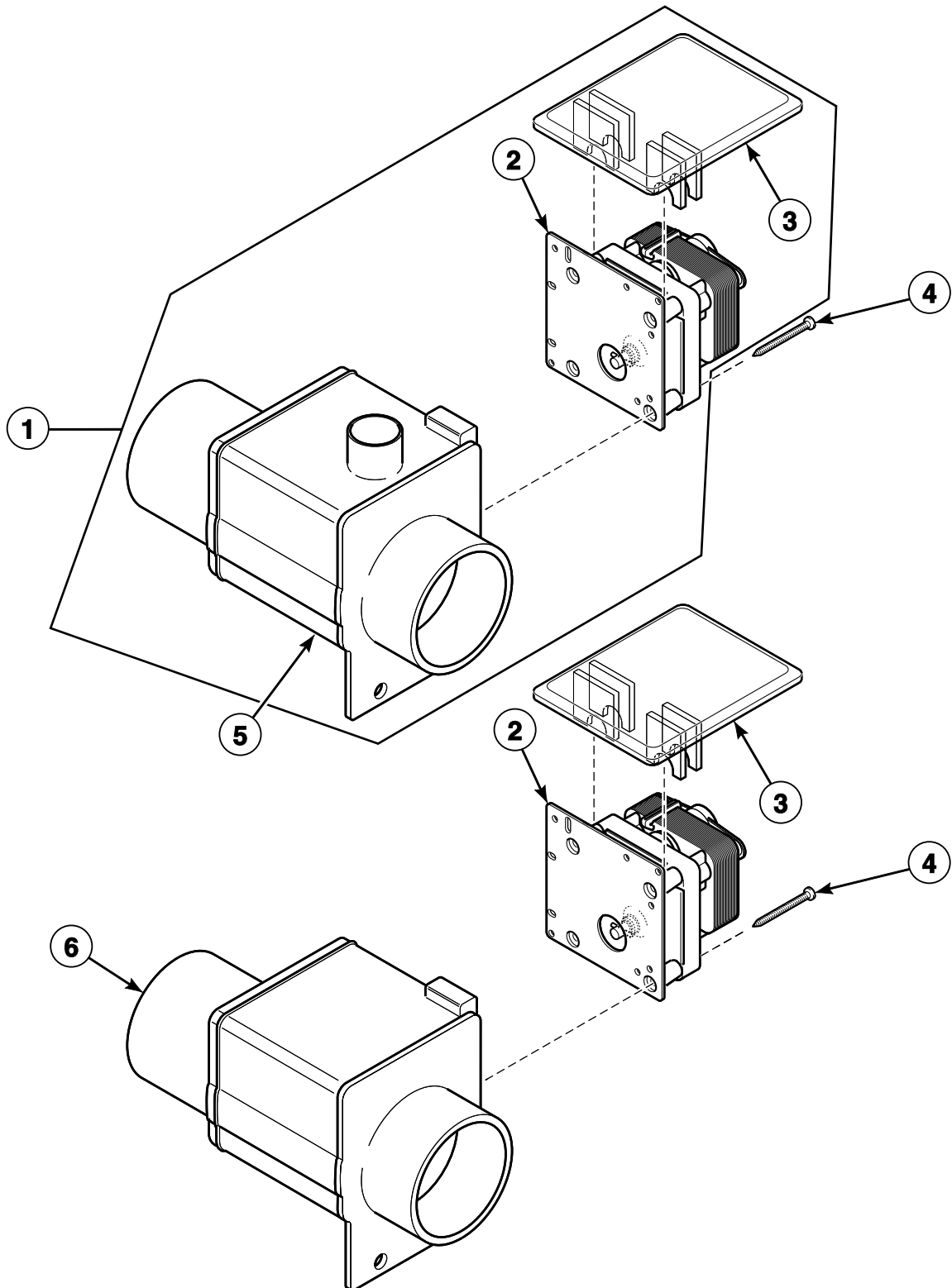
## Drain Valve Assembly - 20 and 30 Pound Models



CHM2450P\_F8354701

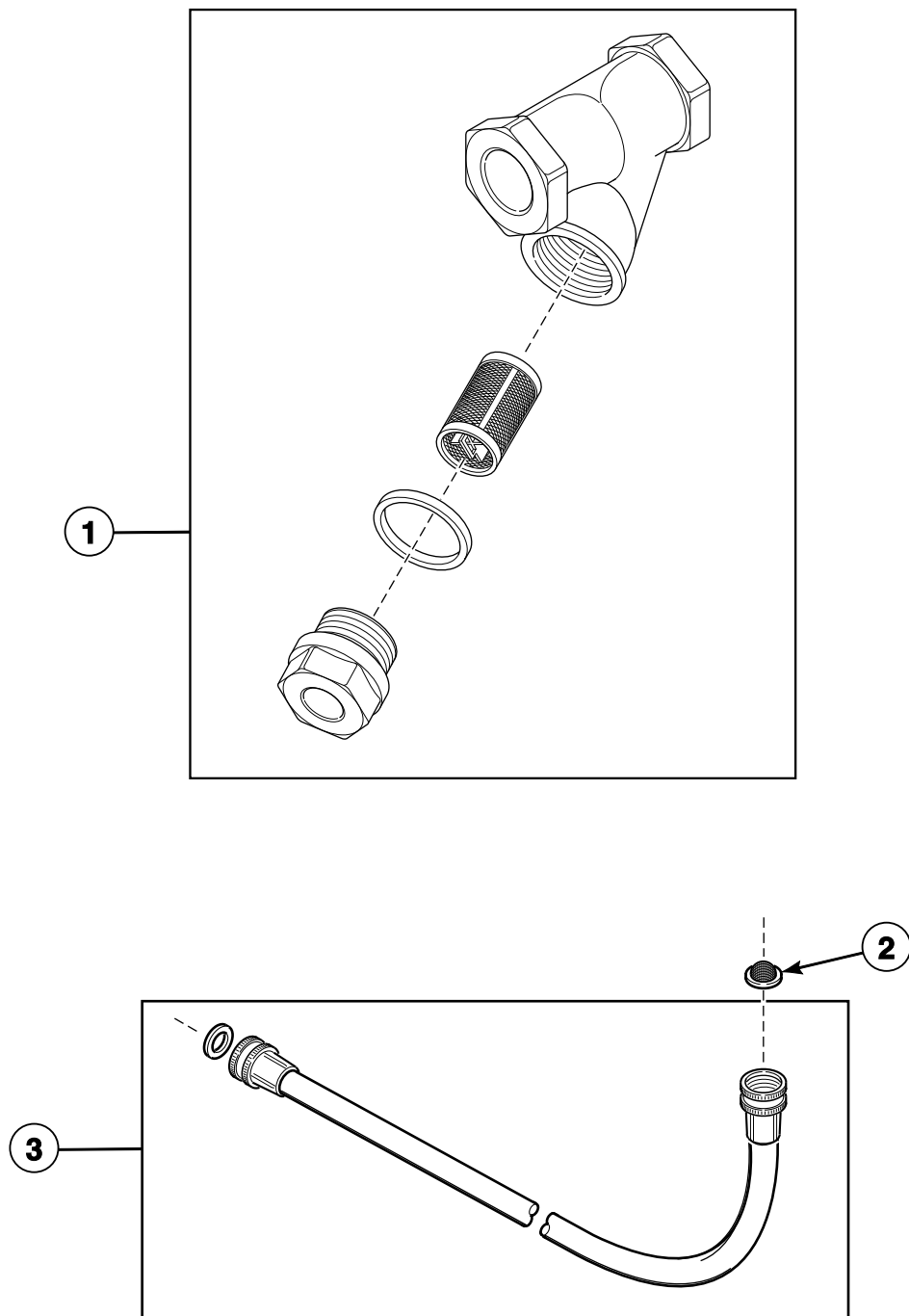
SCL 2 P25

## Drain Valve Assembly - 40 and 60 Pound Models



CHM3081P\_F8354701

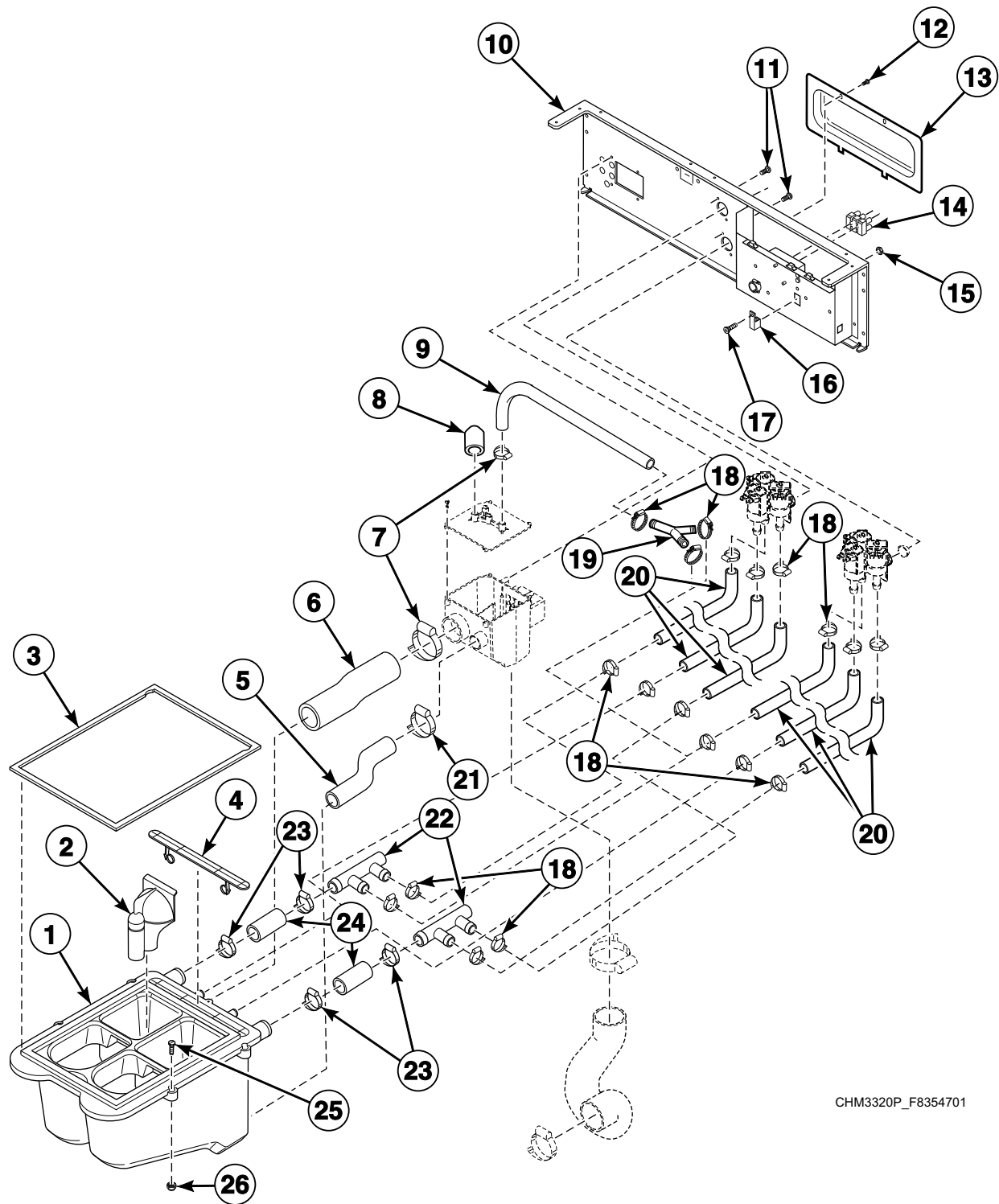
## Steam Filter (Optional) and Water Supply Hose



CHM3049P\_F8354701

SCL 2 P27

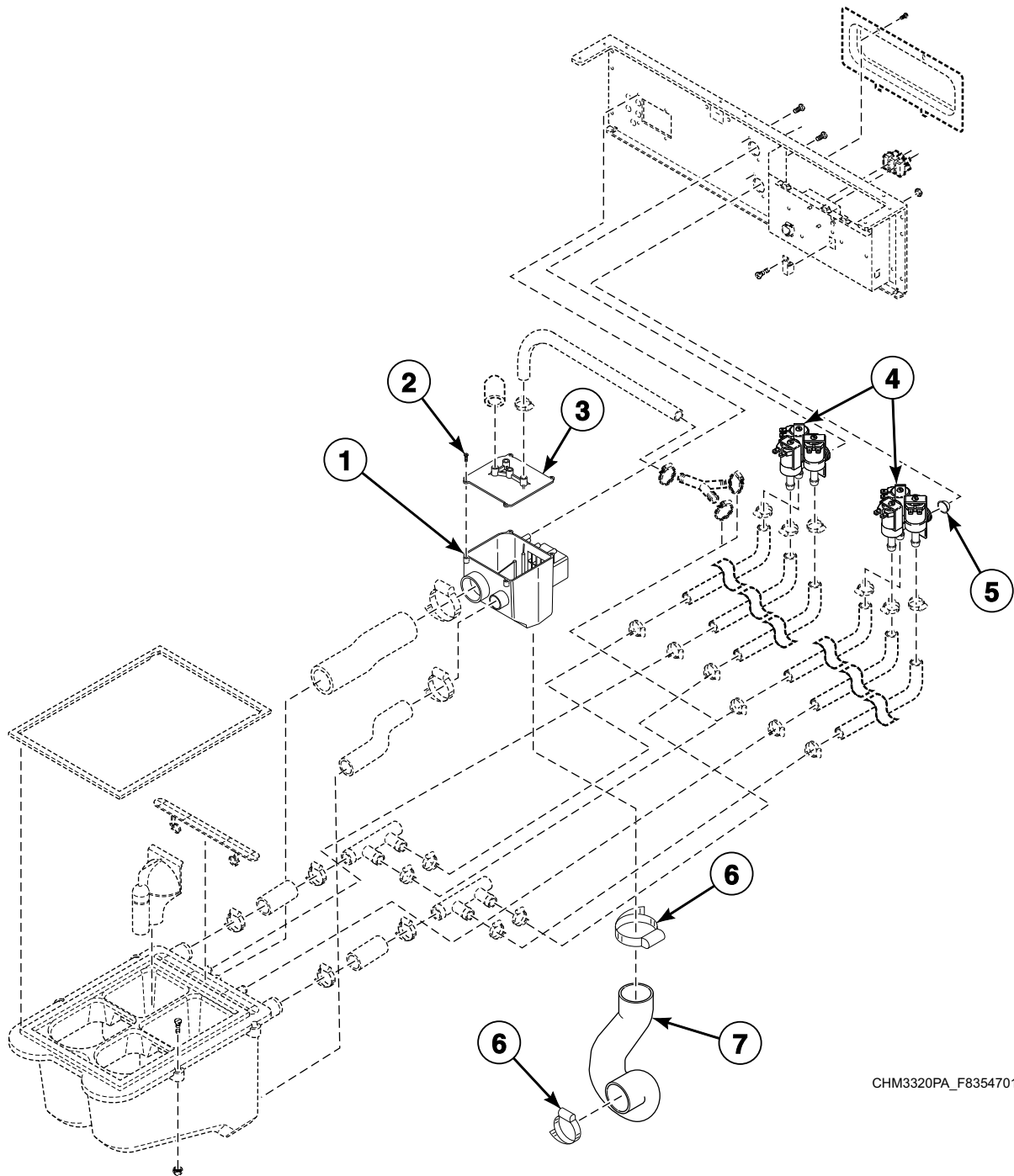
## Fill Plumbing Assembly (Drawing 1 of 2)



CHM3320P\_F8354701

SCL 2 P28

## Fill Plumbing Assembly (Drawing 2 of 2)

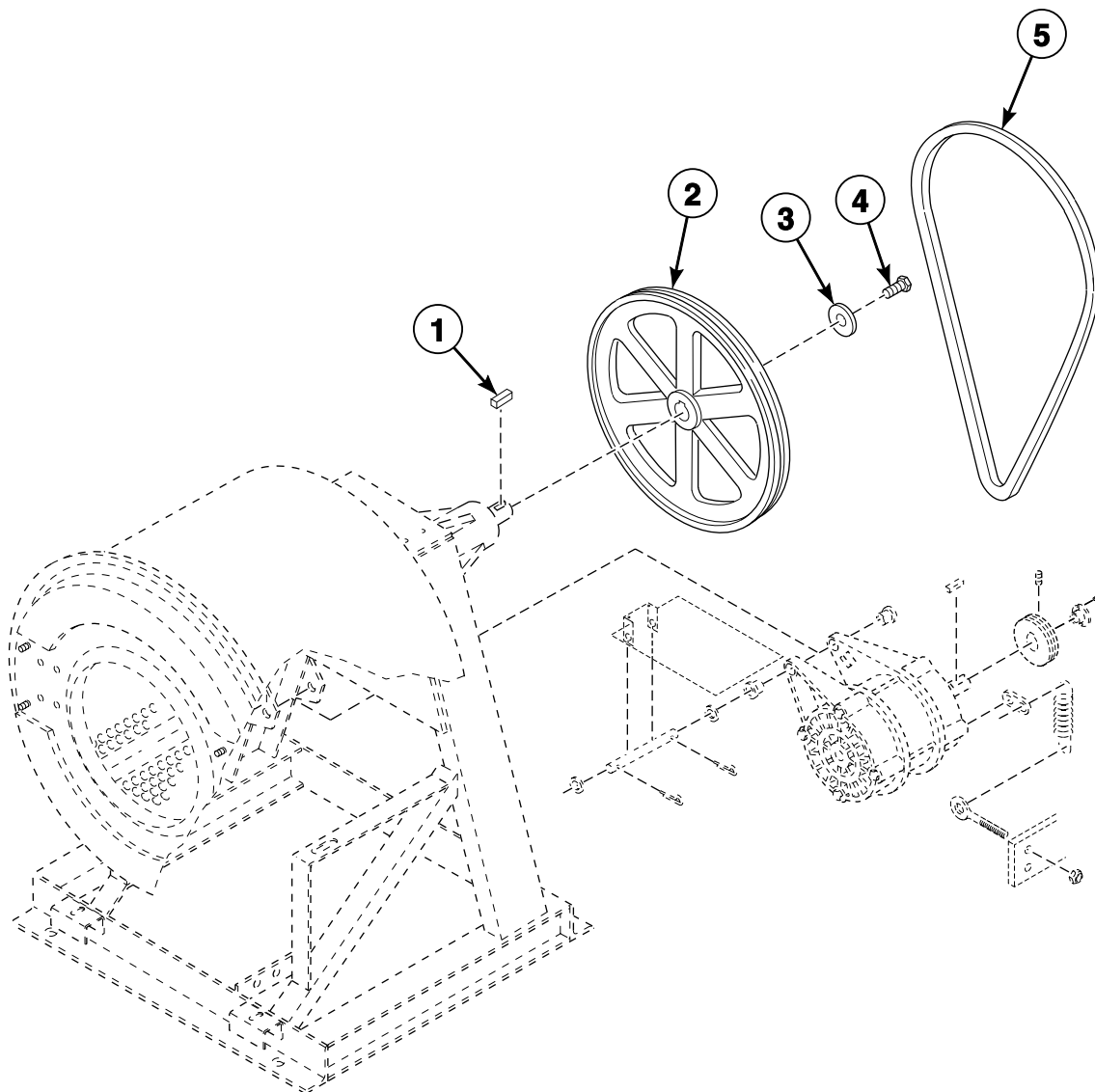


CHM3320PA\_F8354701

SCL 2 P29



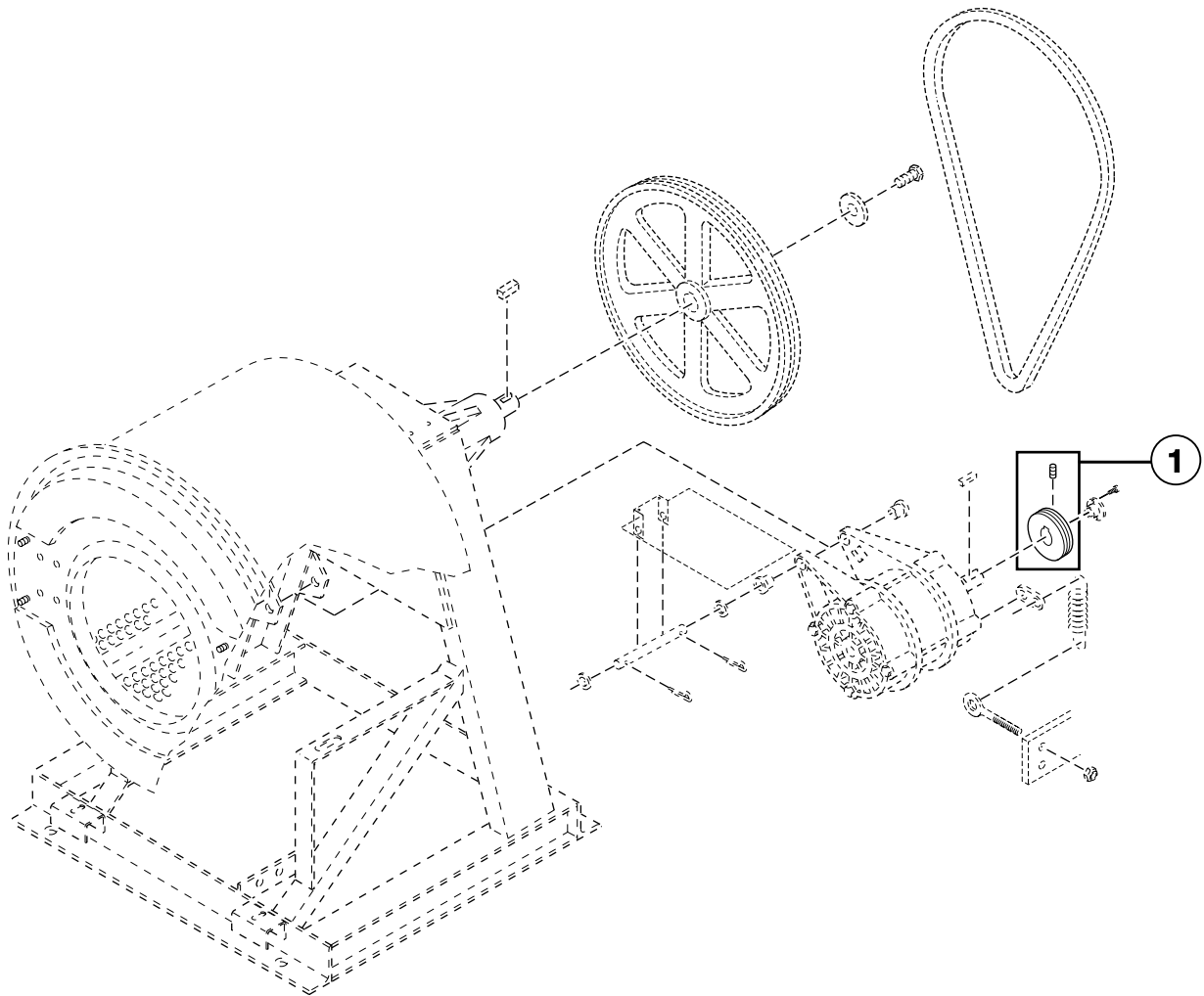
## Pulley and Belt - Design 1 Models (Drawing 1 of 3)



CHM3050P\_F8354701

SCL 2 P30

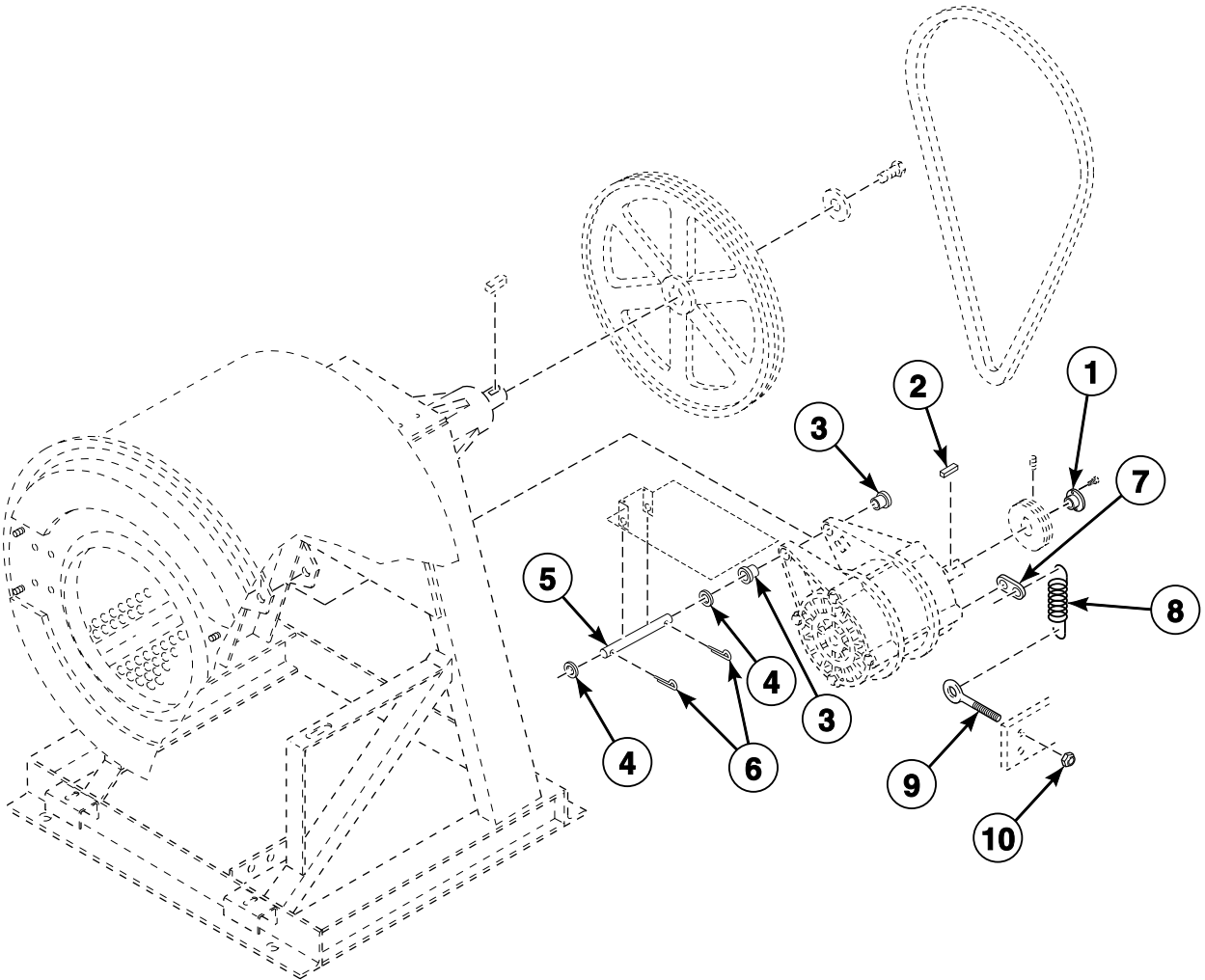
## Pulley and Belt - Design 1 Models (Drawing 2 of 3)



CHM3050PA\_F8354701

SCL 2 P31

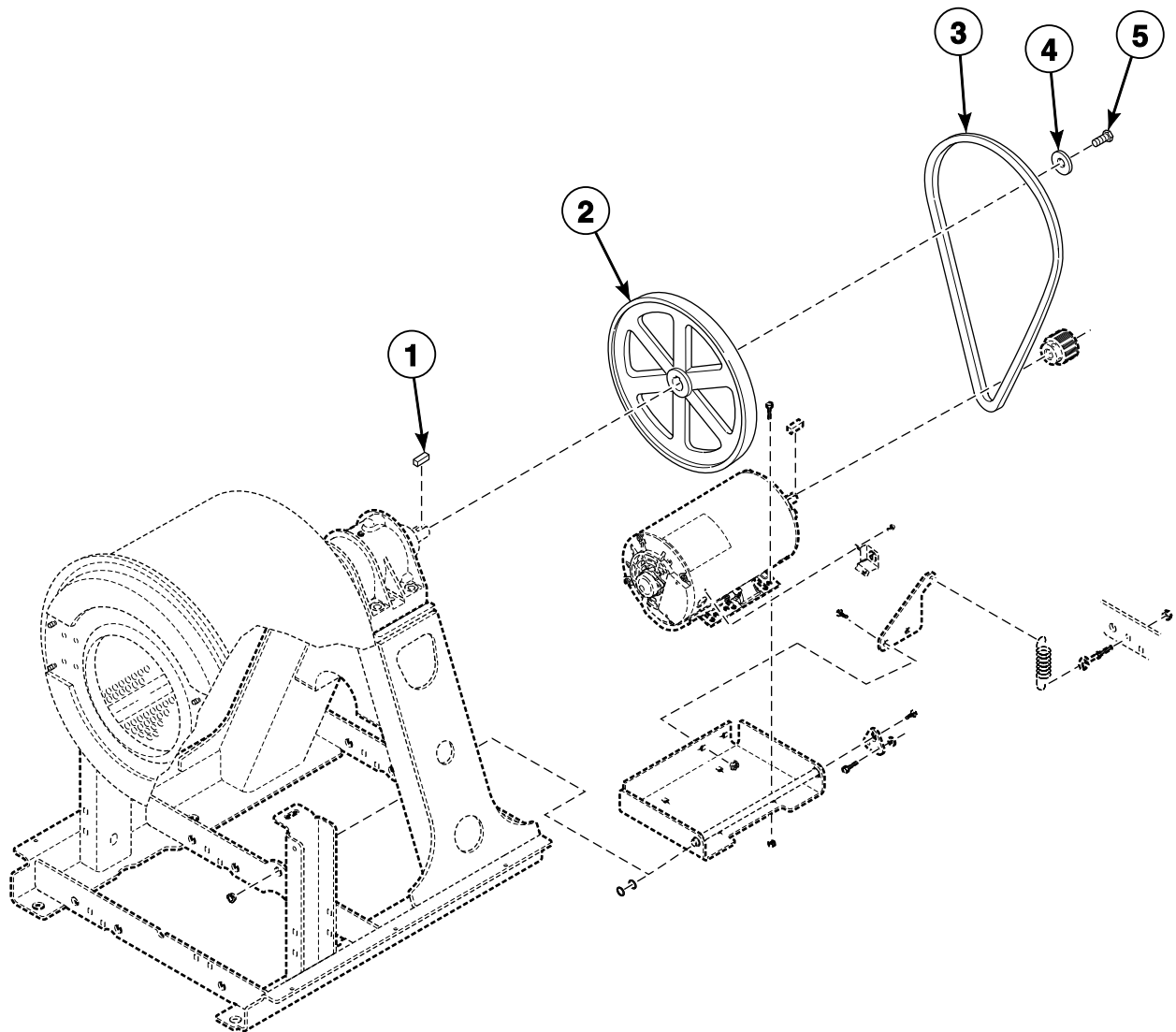
## Pulley and Belt - Design 1 Models (Drawing 3 of 3)



CHM3050PB\_F8354701

SCL 2 P32

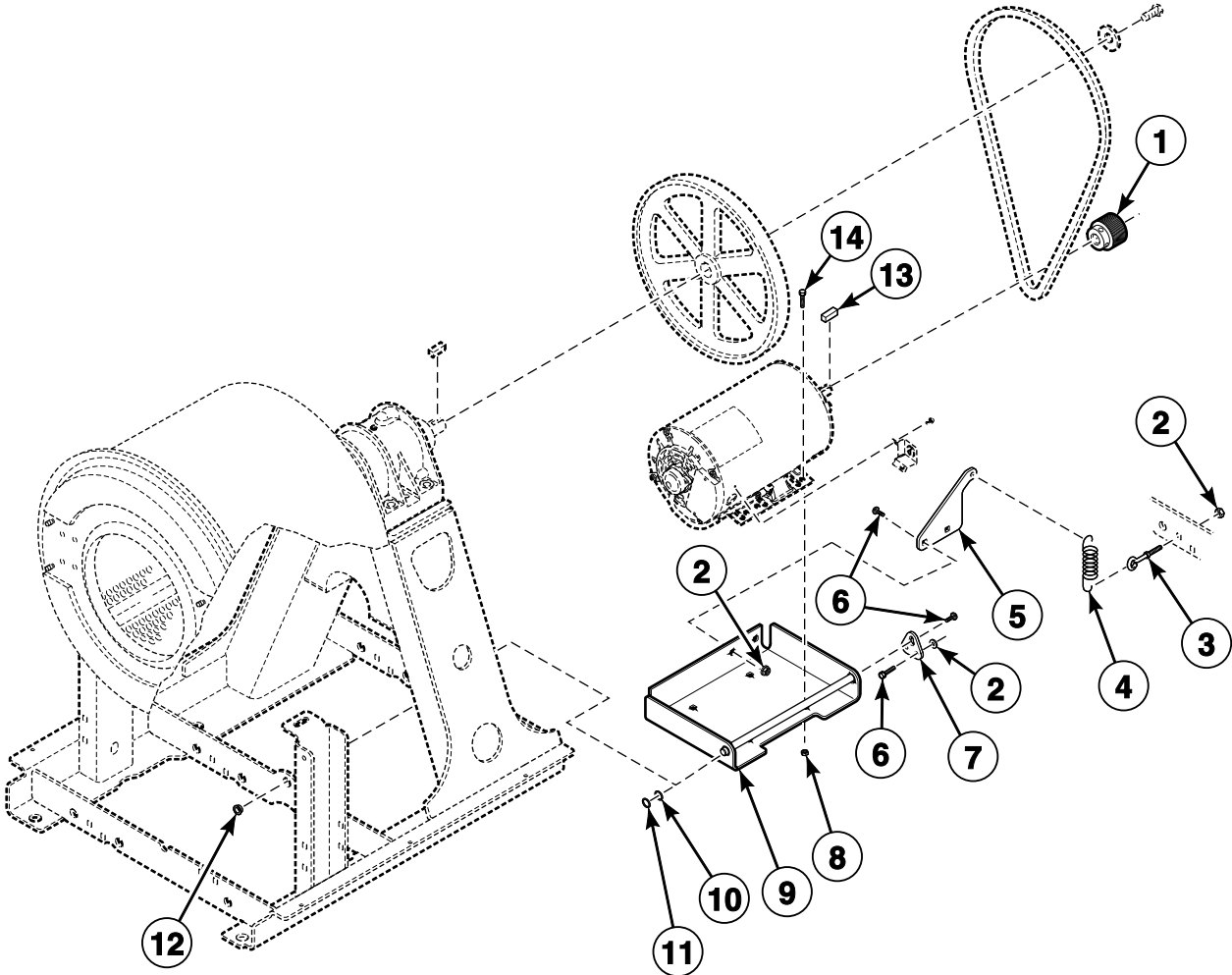
## Pulley and Belt - Design 2 and 3 Models (Drawing 1 of 2)



CHM3290P\_F8354701

SCL 2 P33

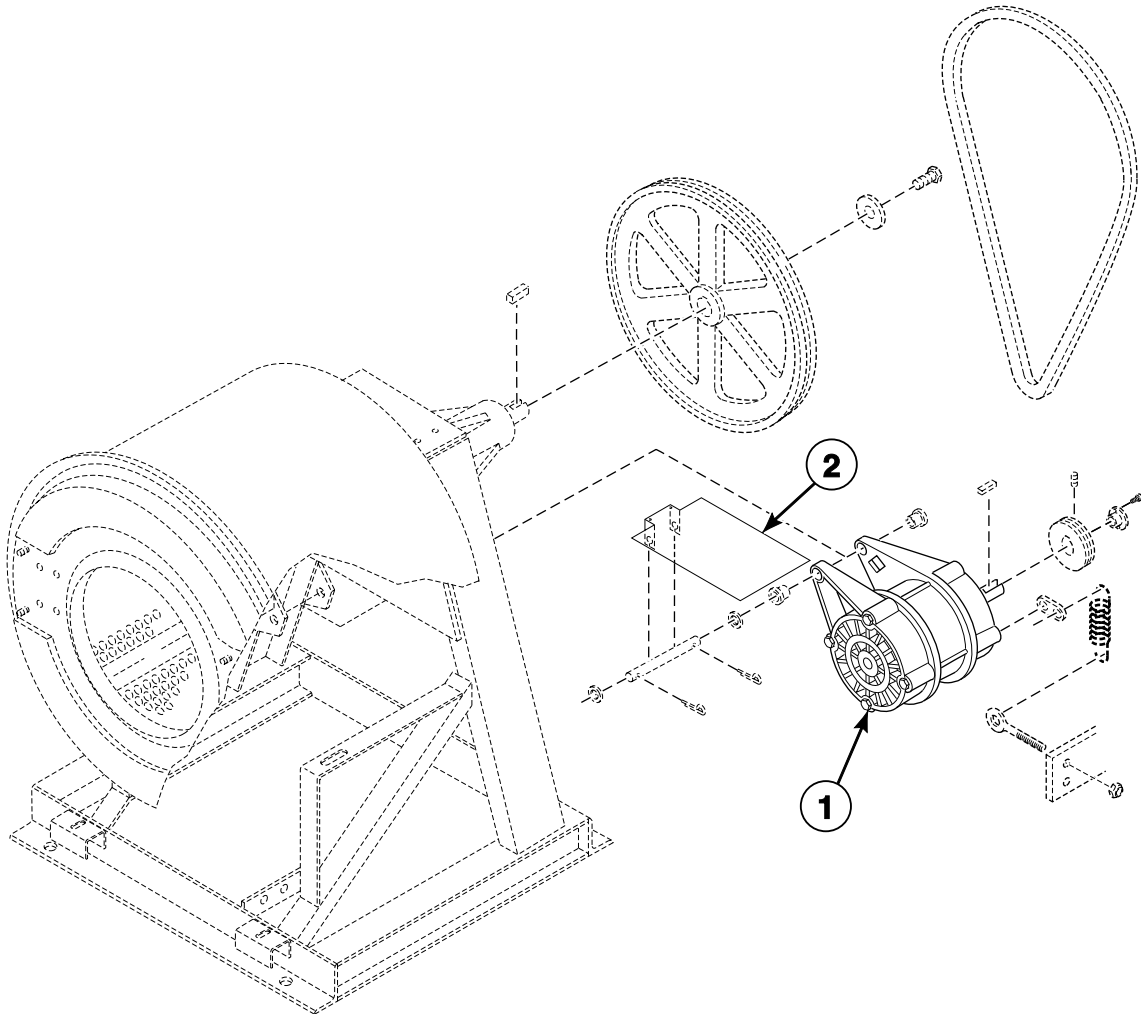
Pulley and Belt - Design 2 and 3 Models (Drawing 2 of 2)



CHM3290PA\_F8354701

SCL 2 P34

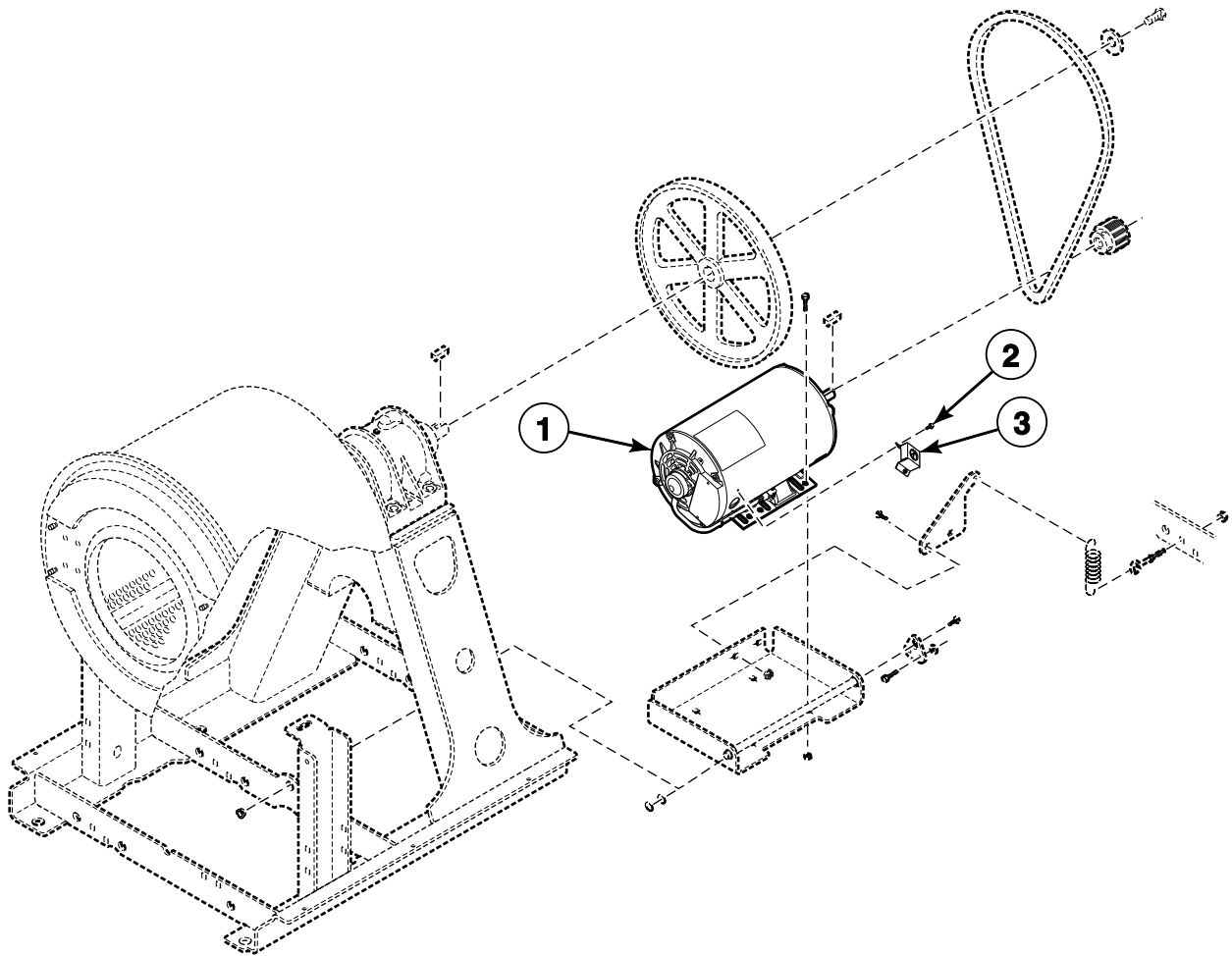
## Motor - Design 1 Models



CHM3050PC\_F8354701

SCL 2 P35

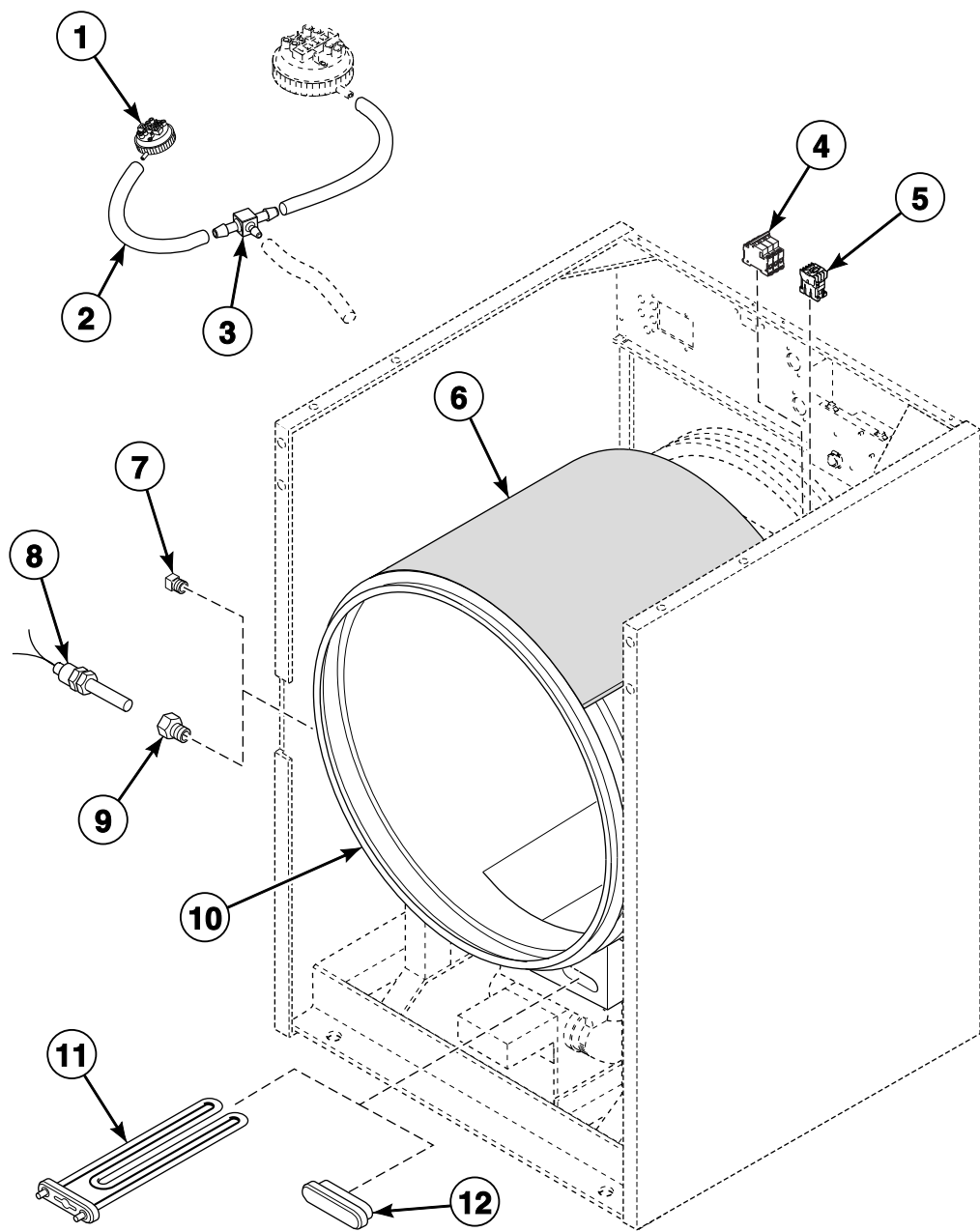
## Motor - Design 2 and 3 Models



CHM3290PB\_F8354701

SCL 2 P36

# Electric Heat Option



CHM3319P\_F8354701

SCL 2 P37