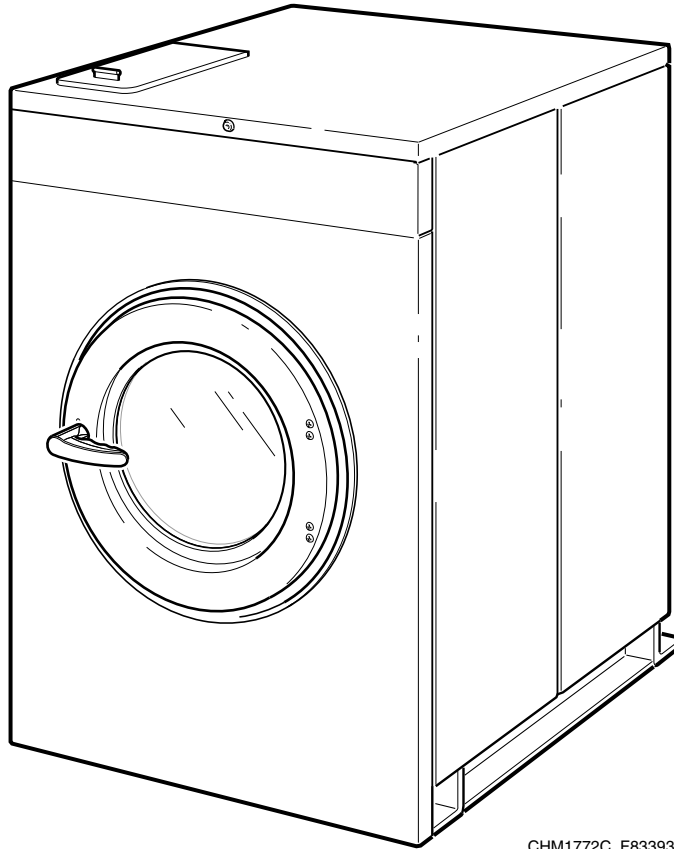


Washer-Extractor

Cabinet Hardmount

Refer to Page 5 for Model Numbers



CHM1772C_F8339301

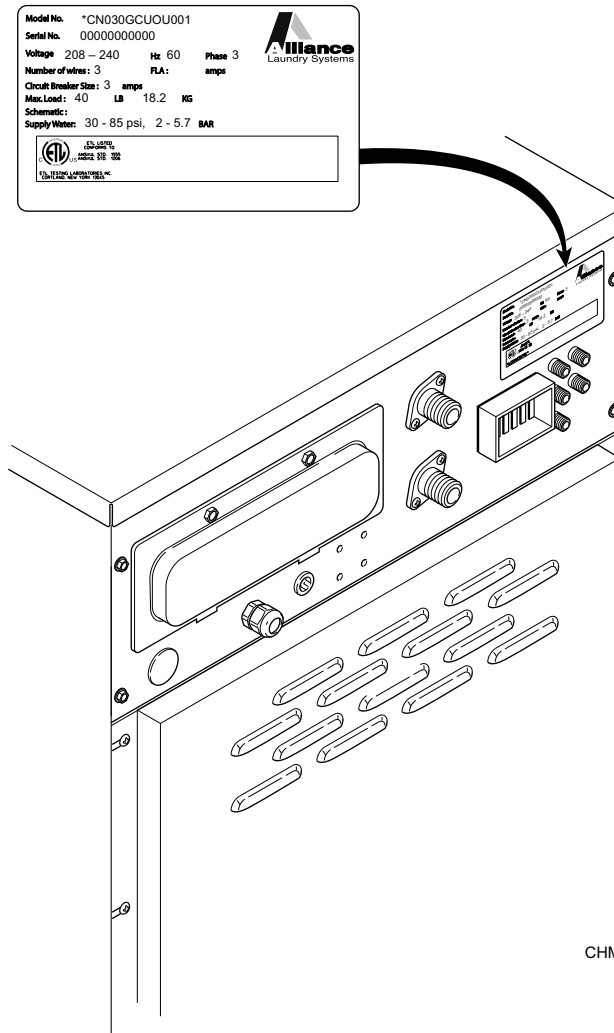
Parts Ordering Information

If literature or replacement parts are required, contact the source from whom the machine was purchased or contact Alliance Laundry Systems at for the name and address of the nearest authorized parts distributor.

For technical assistance, call either of the numbers listed below:

Nameplate Location

When calling or writing about your product, be sure to mention model and serial numbers. Model and serial numbers are located on nameplate(s) as shown.



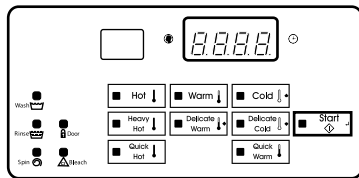
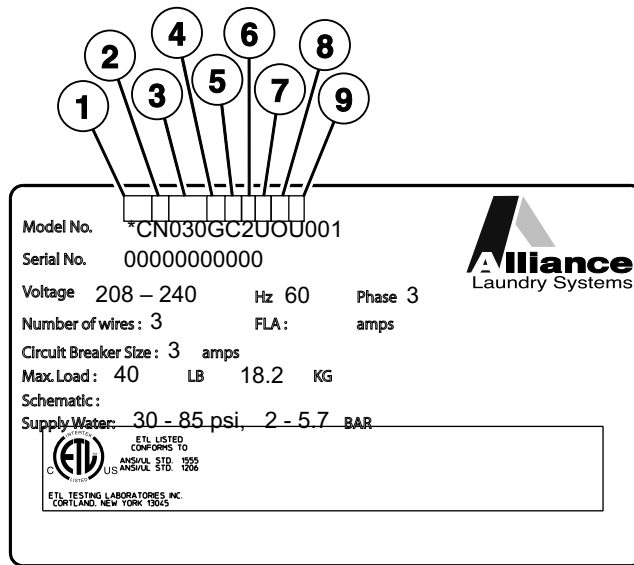
CHM3025P_F8339301

Model Identification

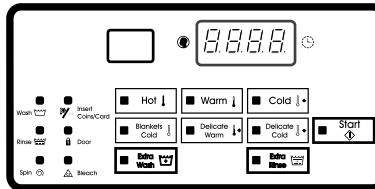
Information in this manual is applicable to these washer-extractor models:

HCD020GD2	HCU020GC2	SCD030GD2	SCU020GC2	UCL020GN2
HCL020GC2	HCU020GD2	SCD040GD2	SCU020GD2	UCL020GNF
HCL020GD2	HCU020GE2	SCD060GD2	SCU020GE2	UCL030GN2
HCL020GN2	HCU020GL2	SCL020GC2	SCU020GL2	UCL030GNF
HCL020GNF	HCU020GN2	SCL020GN2	SCU020GN2	UCL040GN2
HCL030GN2	HCU020GX2	SCL020GNF	SCU020GNF	UCL040GNF
HCL030GNF	HCU020GY2	SCL030GC2	SCU020GX2	UCL060GN2
HCL040GN2	HCU030GC2	SCL030GCF	SCU020GY2	UCL060GNF
HCL040GNF	HCU030GD2	SCL030GN2	SCU030GC2	UCN020GN2
HCL060GN2	HCU030GE2	SCL030GNF	SCU030GD2	UCN020GNF
HCL060GNF	HCU030GL2	SCL040GC2	SCU030GE2	UCN030GN2
HCN020GC2	HCU030GN2	SCL040GCF	SCU030GL2	UCN030GNF
HCN020GD2	HCU030GX2	SCL040GN2	SCU030GN2	UCN040GN2
HCN020GE2	HCU030GY2	SCL040GNF	SCU030GNF	UCN040GNF
HCN020GN2	HCU040GC2	SCL060GC2	SCU030GX2	UCN060GN2
HCN020GNF	HCU040GD2	SCL060GN2	SCU030GY2	UCN060GNF
HCN020GX2	HCU040GE2	SCL060GNF	SCU040GC2	UCU020GN2
HCN020GY2	HCU040GL2	SCN020GC2	SCU040GD2	UCU030GN2
HCN030GC2	HCU040GN2	SCN020GD2	SCU040GE2	UCU040GN2
HCN030GD2	HCU040GX2	SCN020GE2	SCU040GL2	UCU060GN2
HCN030GE2	HCU040GY2	SCN020GN2	SCU040GN2	UCZ020GN2
HCN030GN2	HCU060GC2	SCN020GNF	SCU040GNF	UCZ020GNF
HCN030GNF	HCU060GD2	SCN020GX2	SCU040GX2	UCZ030GN2
HCN030GX2	HCU060GE2	SCN020GY2	SCU040GY2	UCZ030GNF
HCN030GY2	HCU060GL2	SCN030GC2	SCU060GC2	VCU030GN2
HCN040GC2	HCU060GN2	SCN030GD2	SCU060GD2	VCU040GN2
HCN040GD2	HCU060GX2	SCN030GE2	SCU060GE2	VCU060GN2
HCN040GE2	HCU060GY2	SCN030GN2	SCU060GL2	
HCN040GN2	HCZ020GN2	SCN030GNF	SCU060GN2	
HCN040GNF	HCZ020GNF	SCN030GX2	SCU060GNF	
HCN040GX2	HCZ030GN2	SCN030GY2	SCU060GX2	
HCN040GY2	HCZ030GNF	SCN040GC2	SCU060GY2	
HCN060GC2		SCN040GD2	SCZ020GN2	
HCN060GCF		SCN040GE2	SCZ020GNF	
HCN060GD2		SCN040GN2	SCZ030GN2	
HCN060GE2		SCN040GNF	SCZ030GNF	
HCN060GN2		SCN040GX2		
HCN060GNF		SCN040GY2		
HCN060GX2		SCN060GC2		
HCN060GY2		SCN060GCF		
		SCN060GD2		
		SCN060GDF		
		SCN060GE2		
		SCN060GN2		
		SCN060GNF		
		SCN060GX2		
		SCN060GY2		

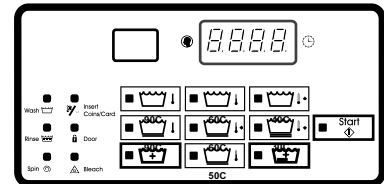
Product Overview - M9, M30, Galaxy 400, Galaxy 600, Quantum Silver and Quantum Gold



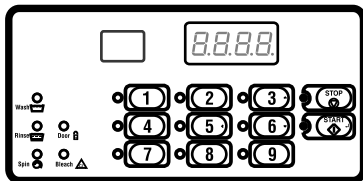
Galaxy 400 Coin



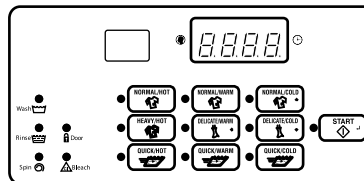
Galaxy 600 Coin (Domestic)



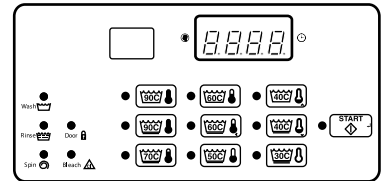
Galaxy 600 Coin (International)



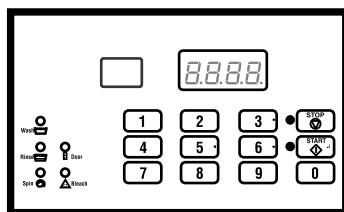
M9/Galaxy 400 OPL/Quantum Silver OPL



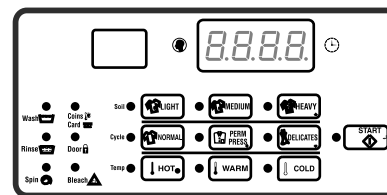
Quantum Silver Coin (Domestic)



Quantum Silver Coin (International)



M30/Quantum Gold OPL

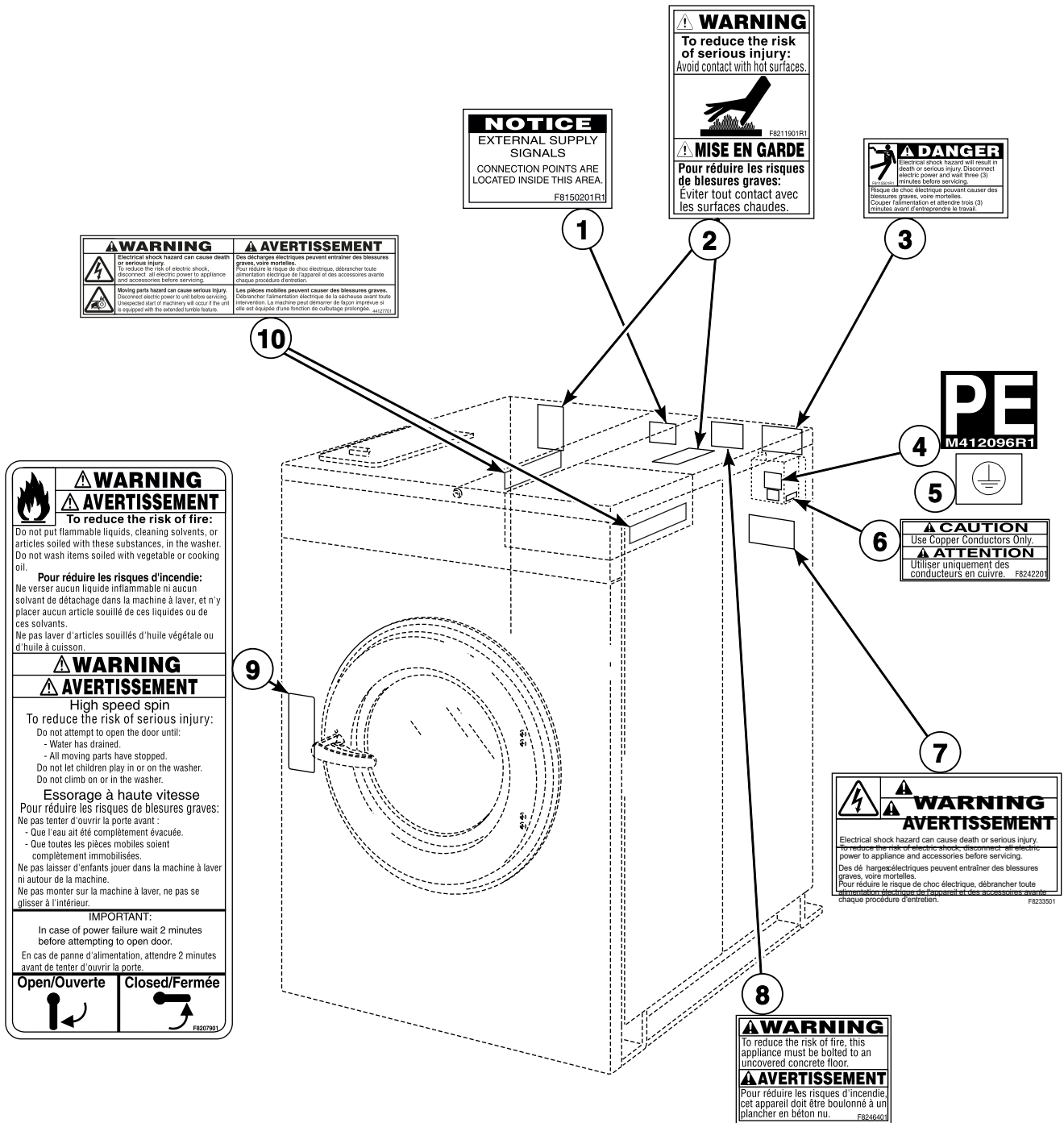


Quantum Gold

CHM3217P_F8339301

SCL3 P1

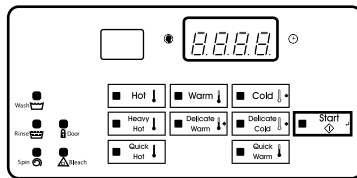
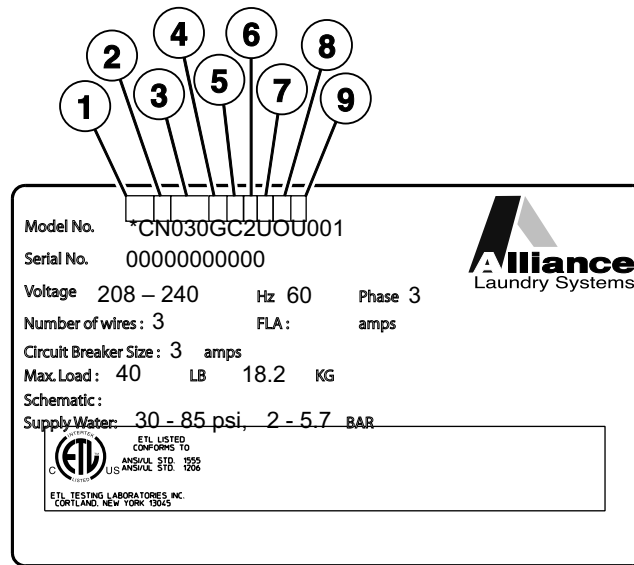
Decals



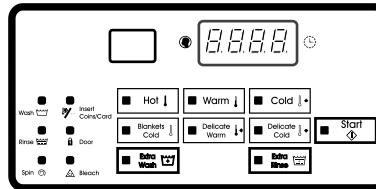
CHM3027P_F8339301

SCL3 P2

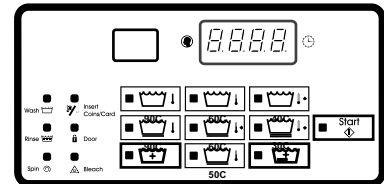
Product Overview - M9, M30, Galaxy 400, Galaxy 600, Quantum Silver and Quantum Gold



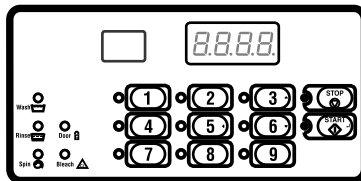
Galaxy 400 Coin



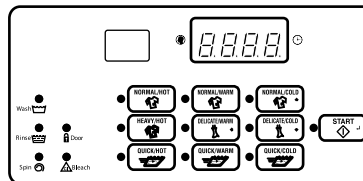
Galaxy 600 Coin (Domestic)



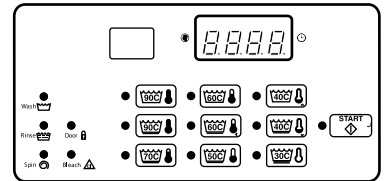
Galaxy 600 Coin (International)



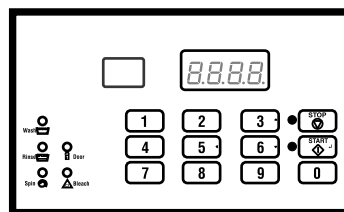
M9/Galaxy 400 OPL/Quantum Silver OPL



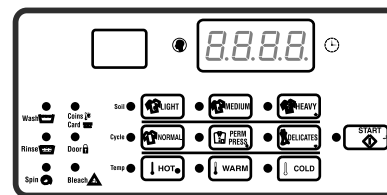
Quantum Silver Coin (Domestic)



Quantum Silver Coin (International)



M30/Quantum Gold OPL

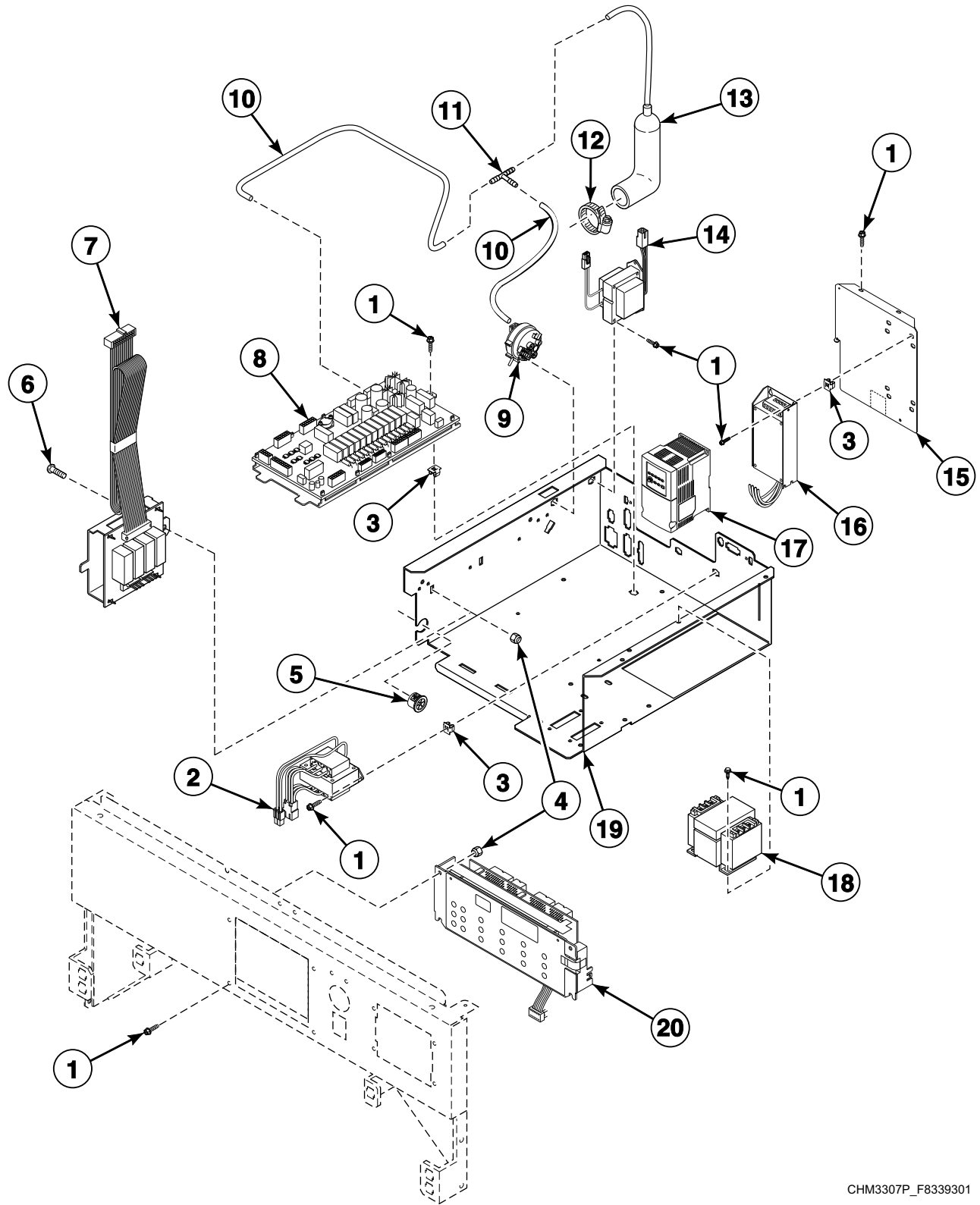


Quantum Gold

CHM3217P_F8339301

SCL3 P3

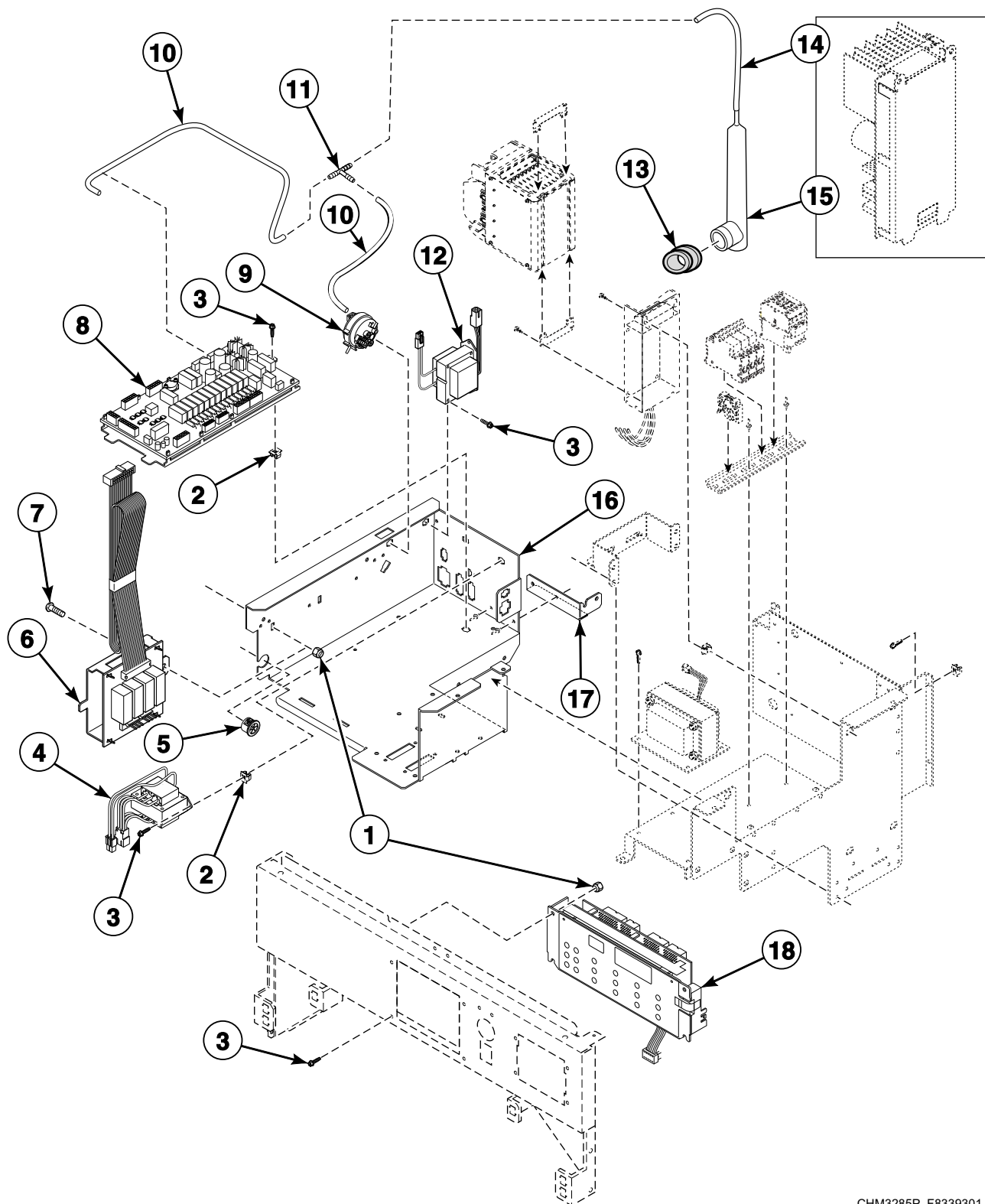
Control Module - F-Speed Design 1 OPL Models



CHM3307P_F8339301

SCL3 P4

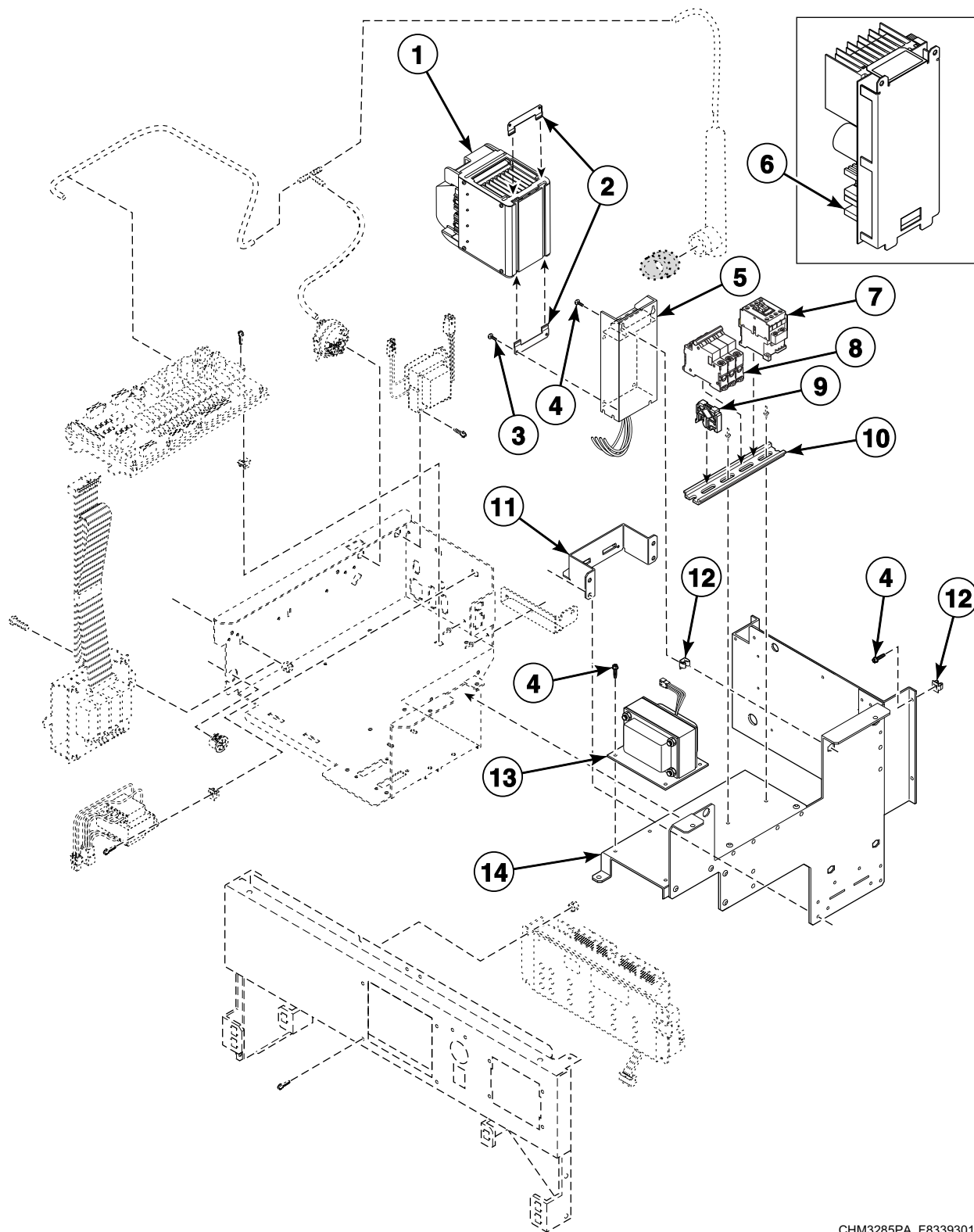
Control Module - Design 2 and 3 OPL Models (Drawing 1 of 2)



CHM3285P_F8339301

SCL3 P5

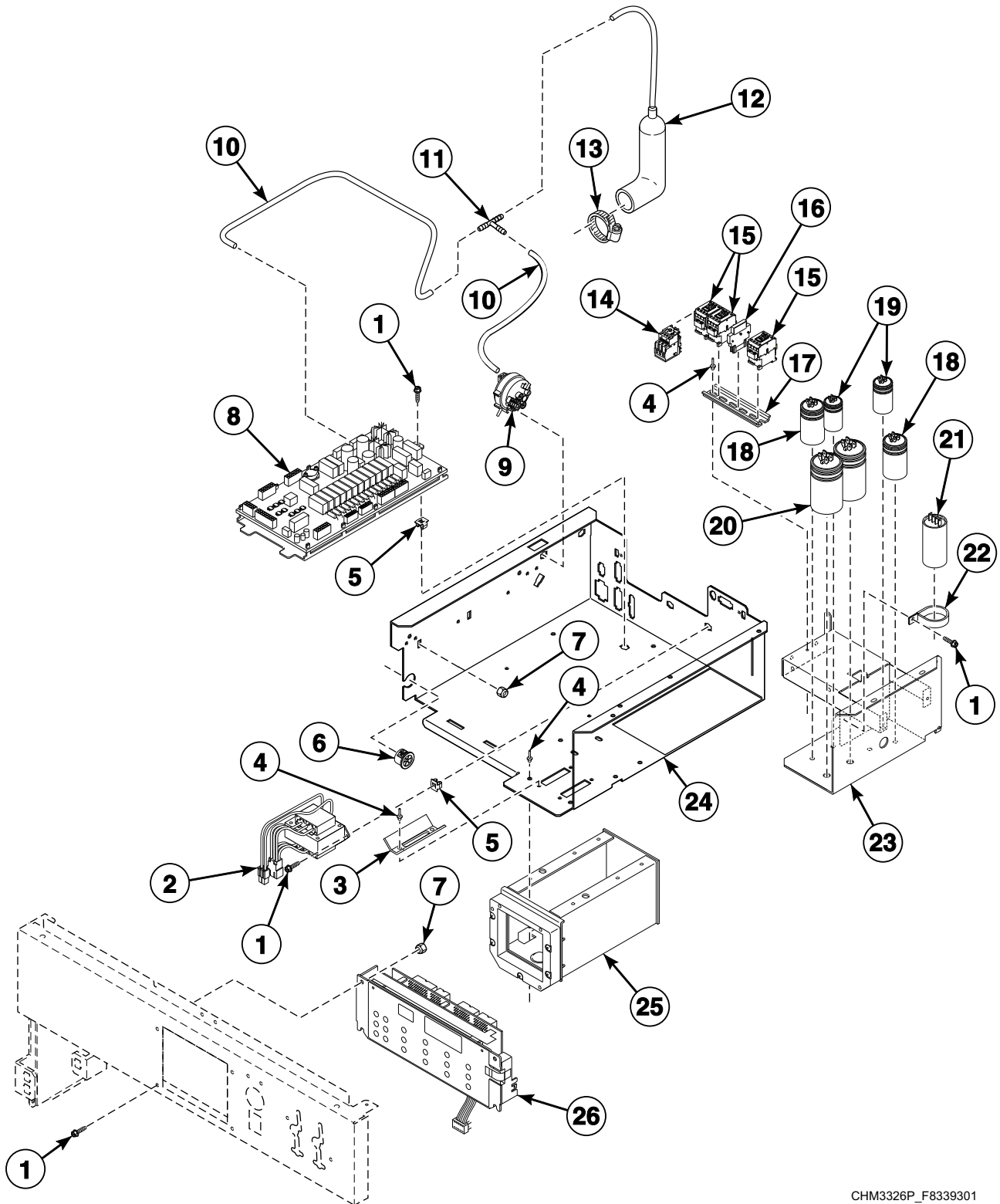
Control Module - Design 2 and 3 OPL Models (Drawing 2 of 2)



CHM3285PA_F8339301

SCL3 P6

Control Module - 2 Speed Coin Models

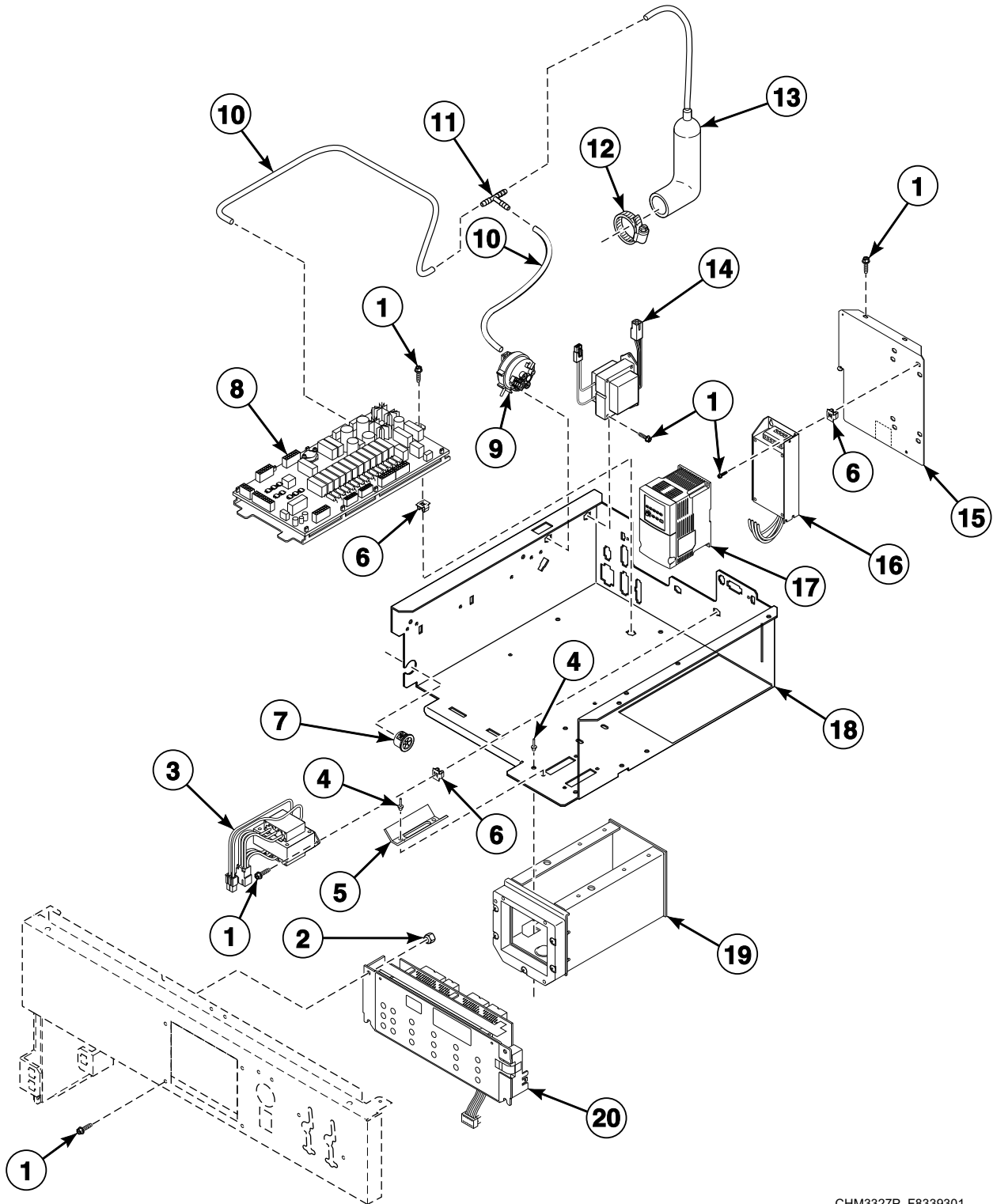


CHM3326P_F8339301

SCL3 P7

Control Module - F-Speed Coin Models

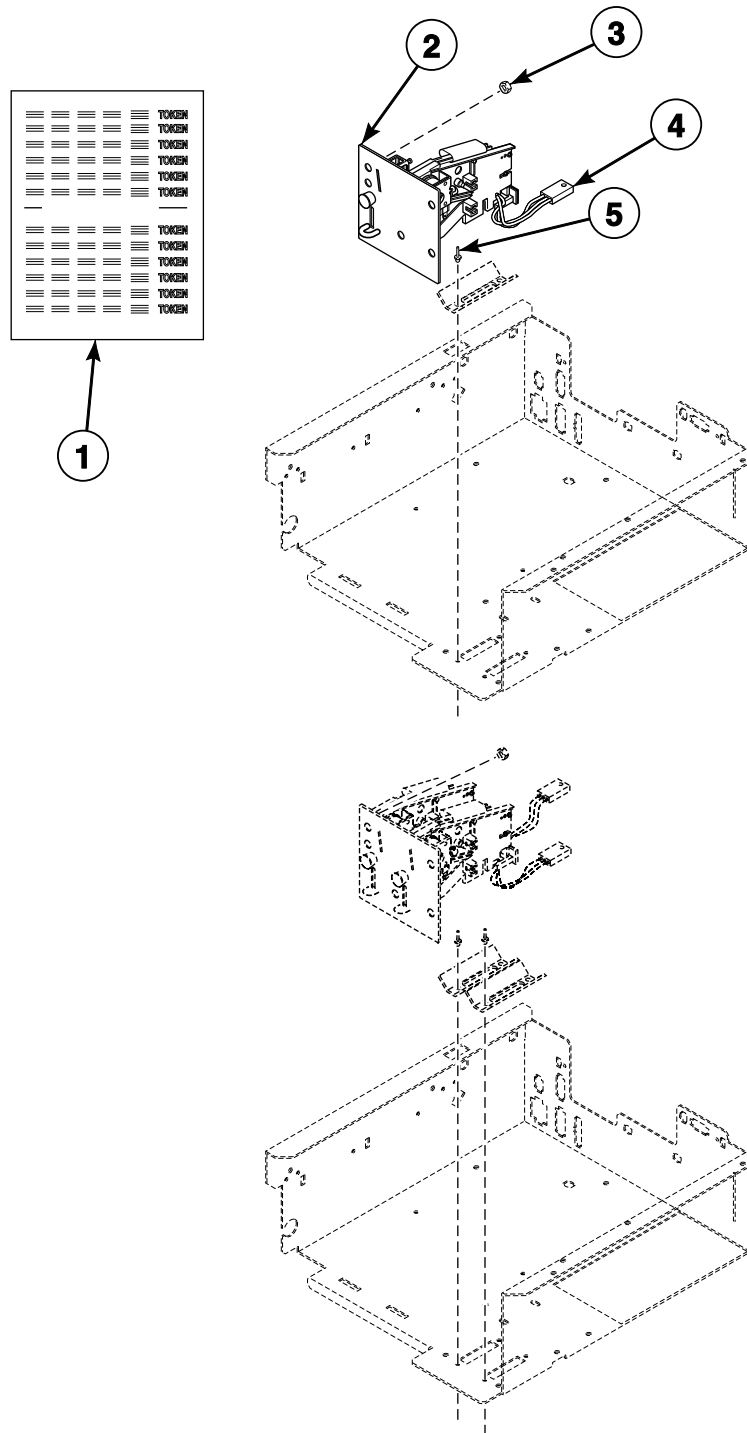
Models HCN060GCF, SCL030GCF, SCL040GCF, SCN060GCF and SCN060GDF



CHM3327P_F8339301

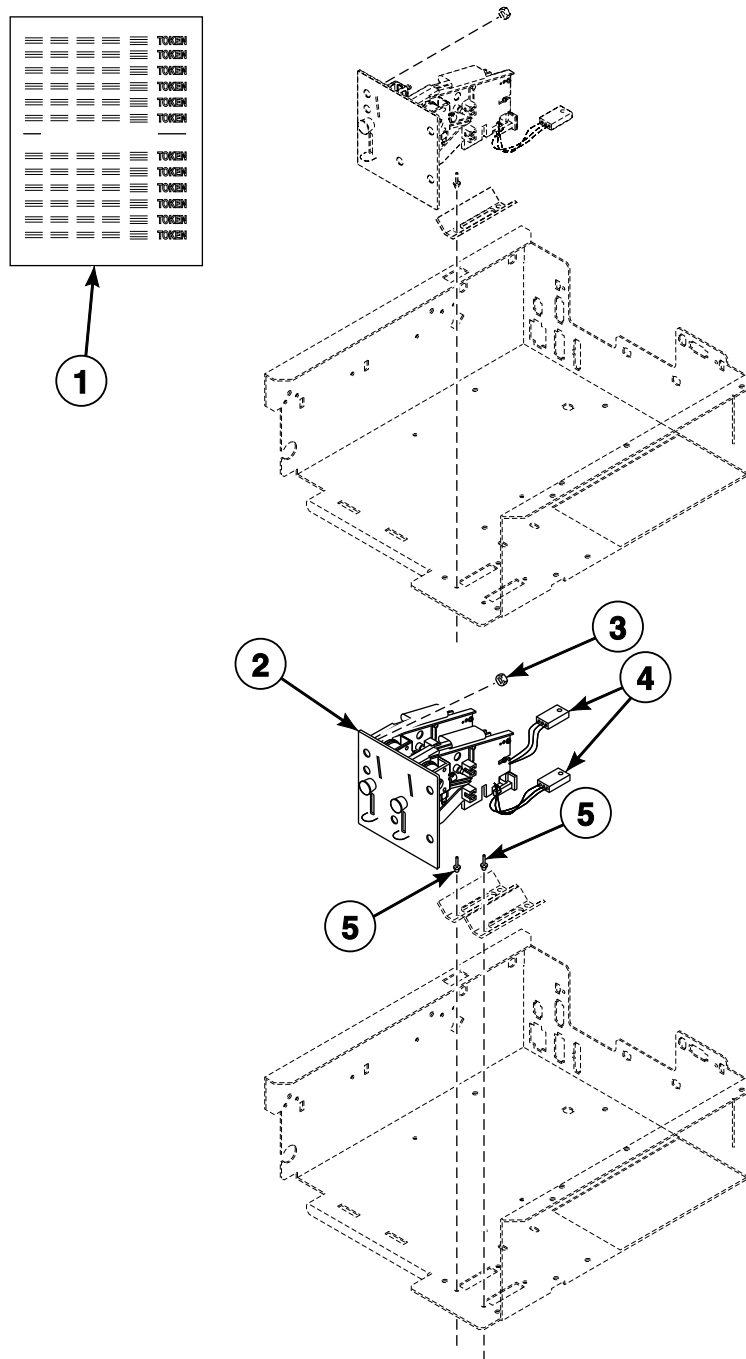
SCL3 P8

Flush Mount Coin Meter Assembly - Single Drop



CHM3088P_F8339301

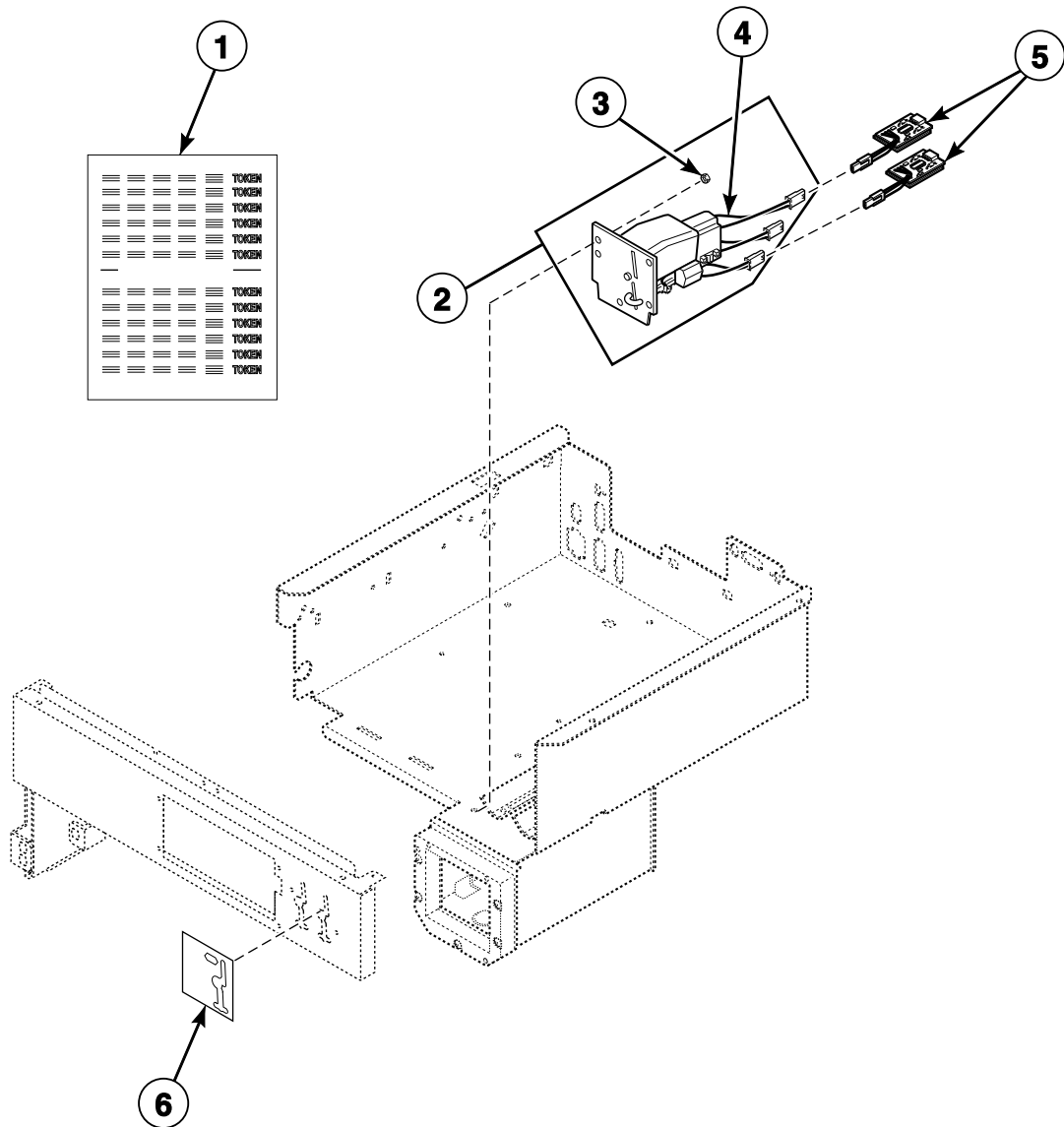
Flush Mount Coin Meter Assembly - Dual Drop



CHM3088PA_F8339301

SCL3 P10

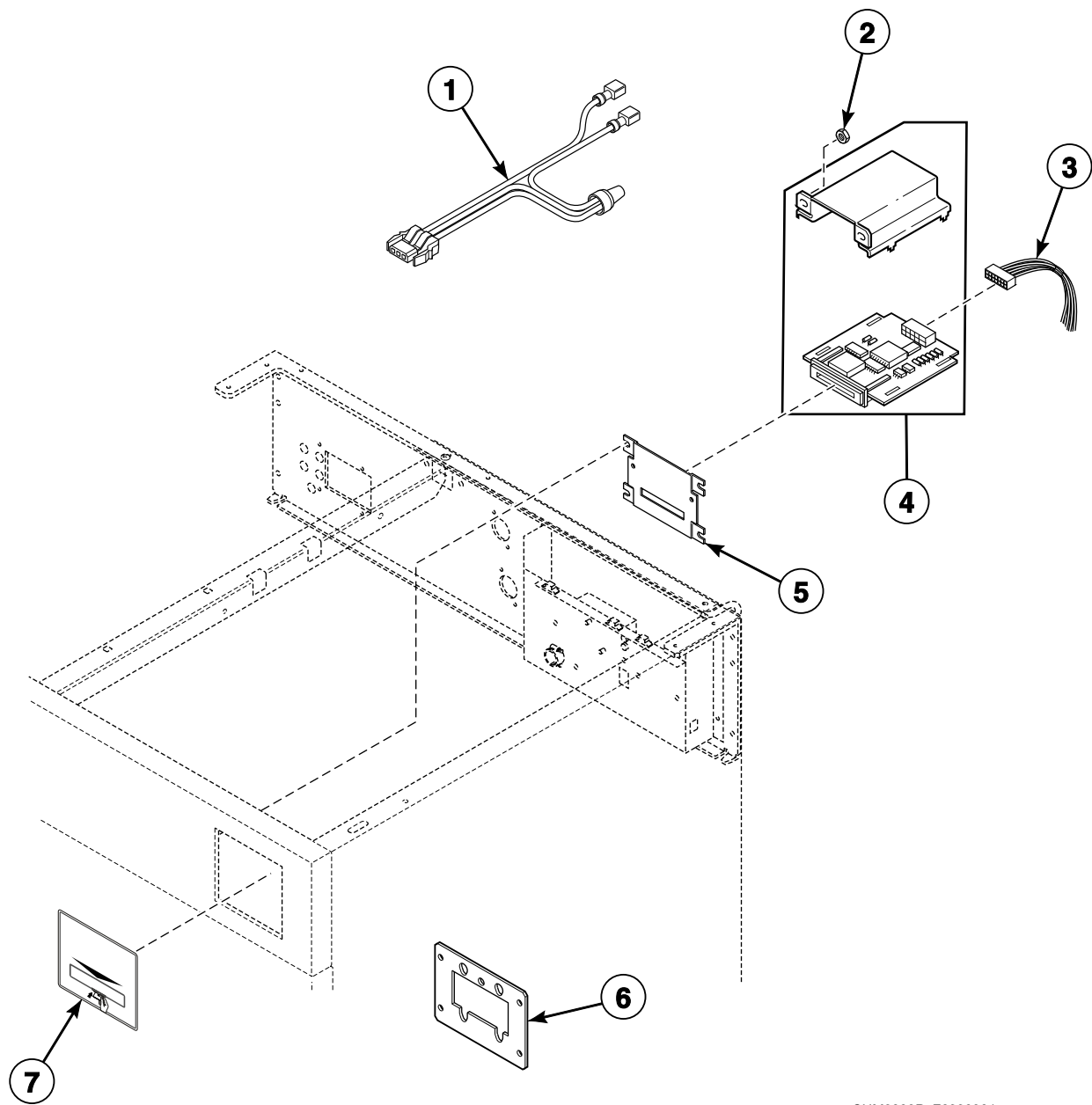
Electronic Coin Meter Assembly



CHM3089P_F8339301

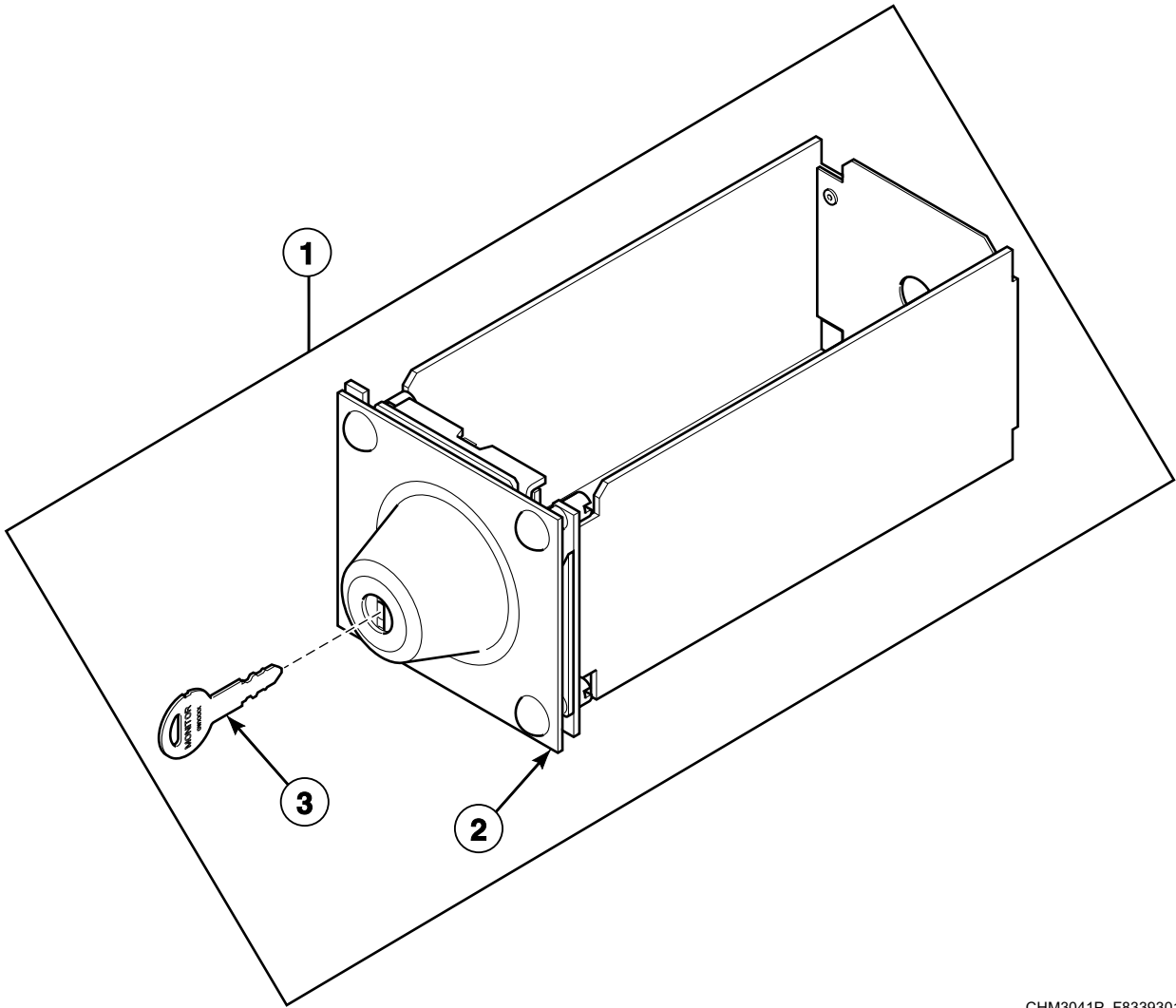
SCL3 P11

Card Reader - GY Models



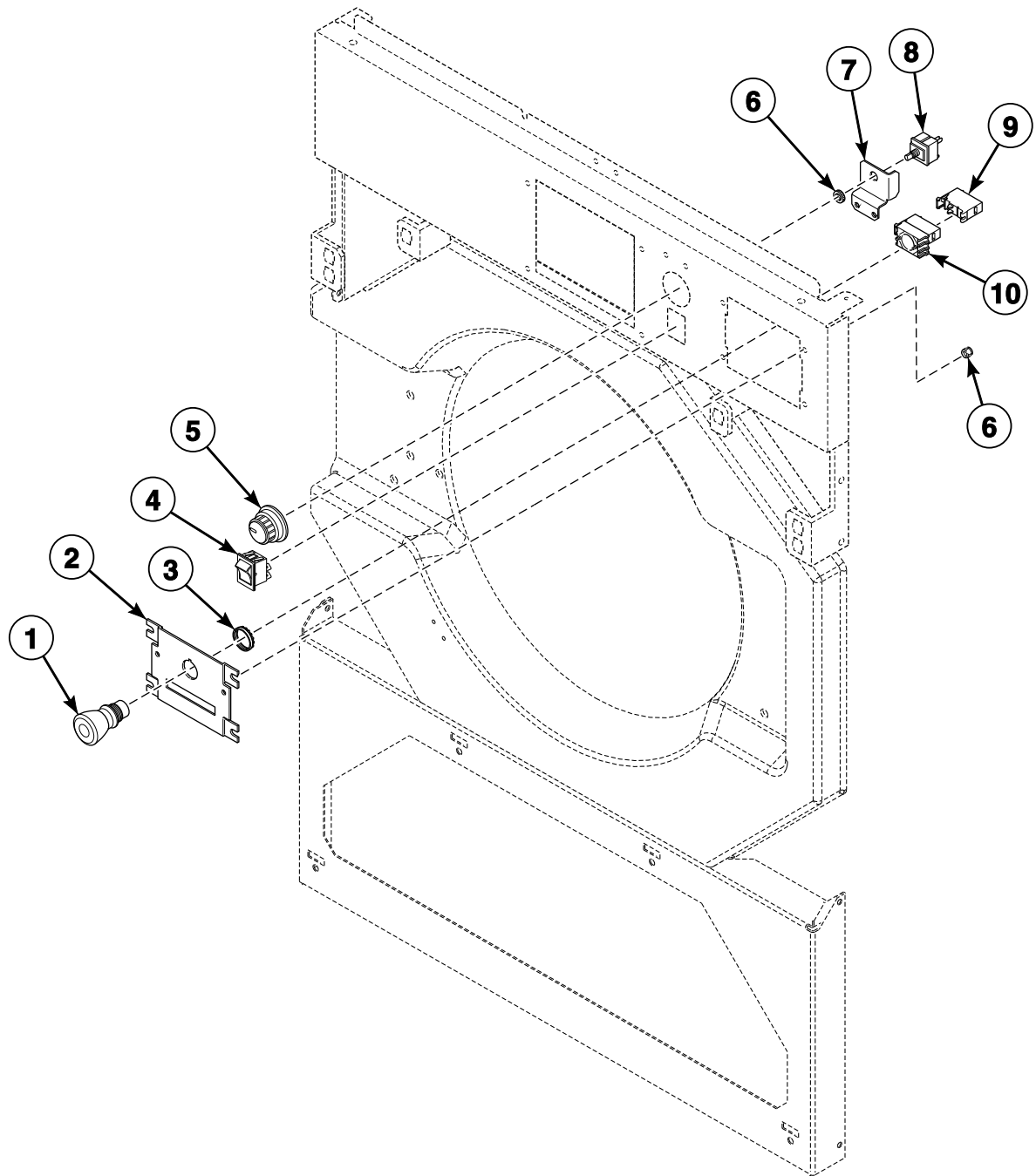
CHM3093P_F8339301

Optional Coin Box



CHM3041P_F8339301

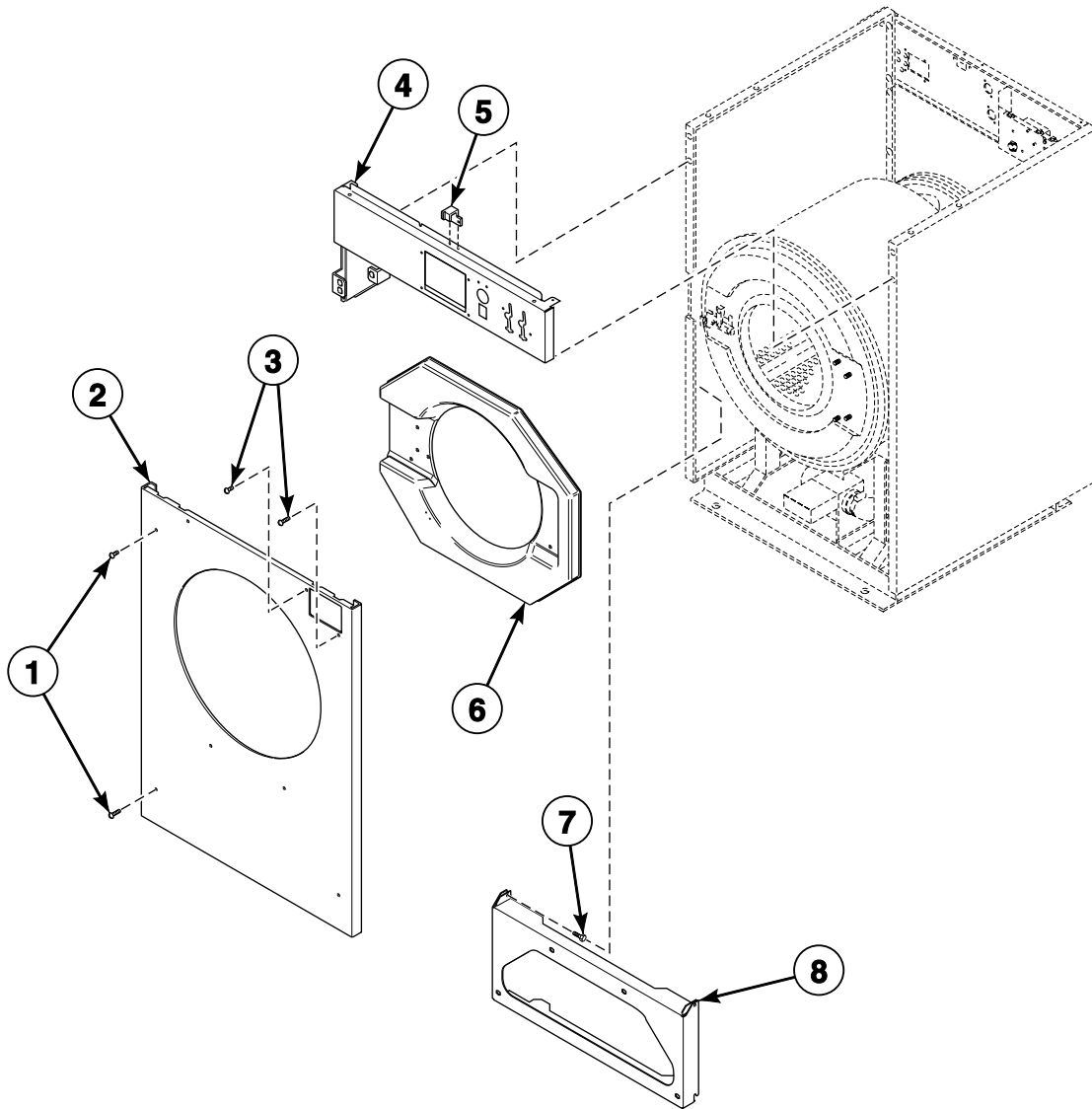
Rocker Switch, Temperature Knob and Emergency Stop Button - GN Models



CHM3160P_F8339301

SCL3 P14

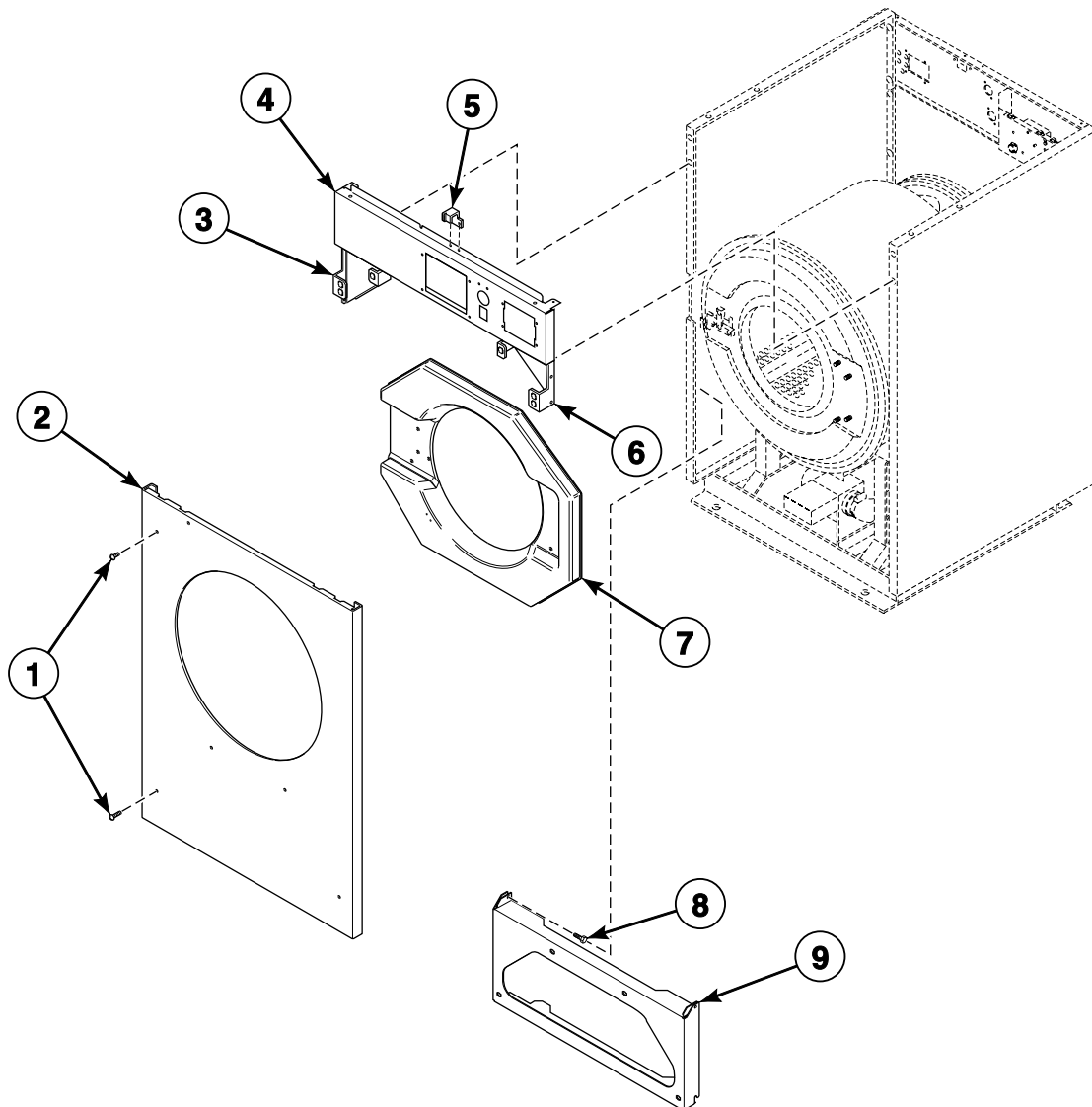
Front Panels and Control Panel - Coin Models



CHM3103P_F8339301

SCL3 P15

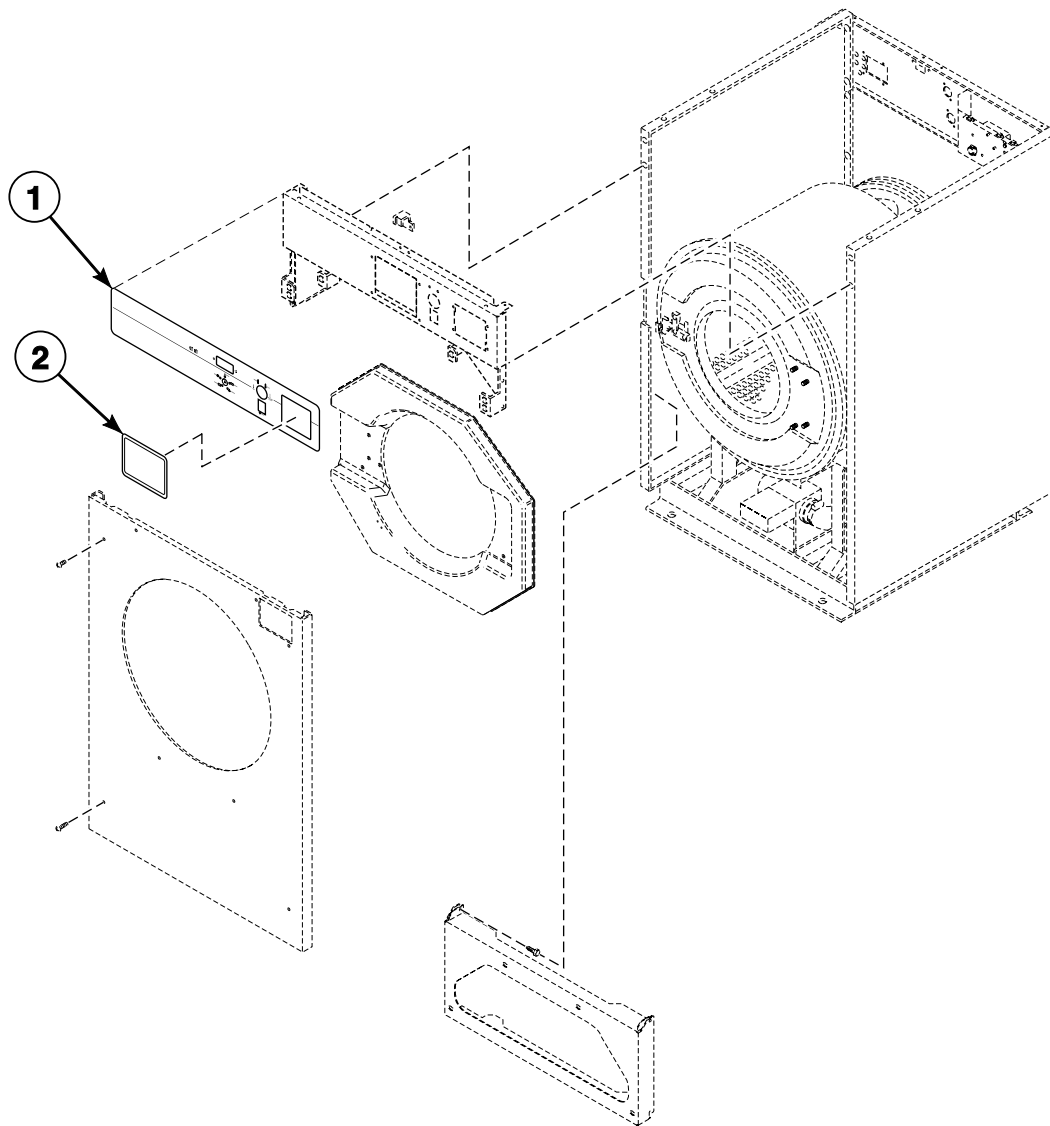
Front Panel and Control Panel - GN and GY Models



CHM3104P_8339301

SCL3 P16

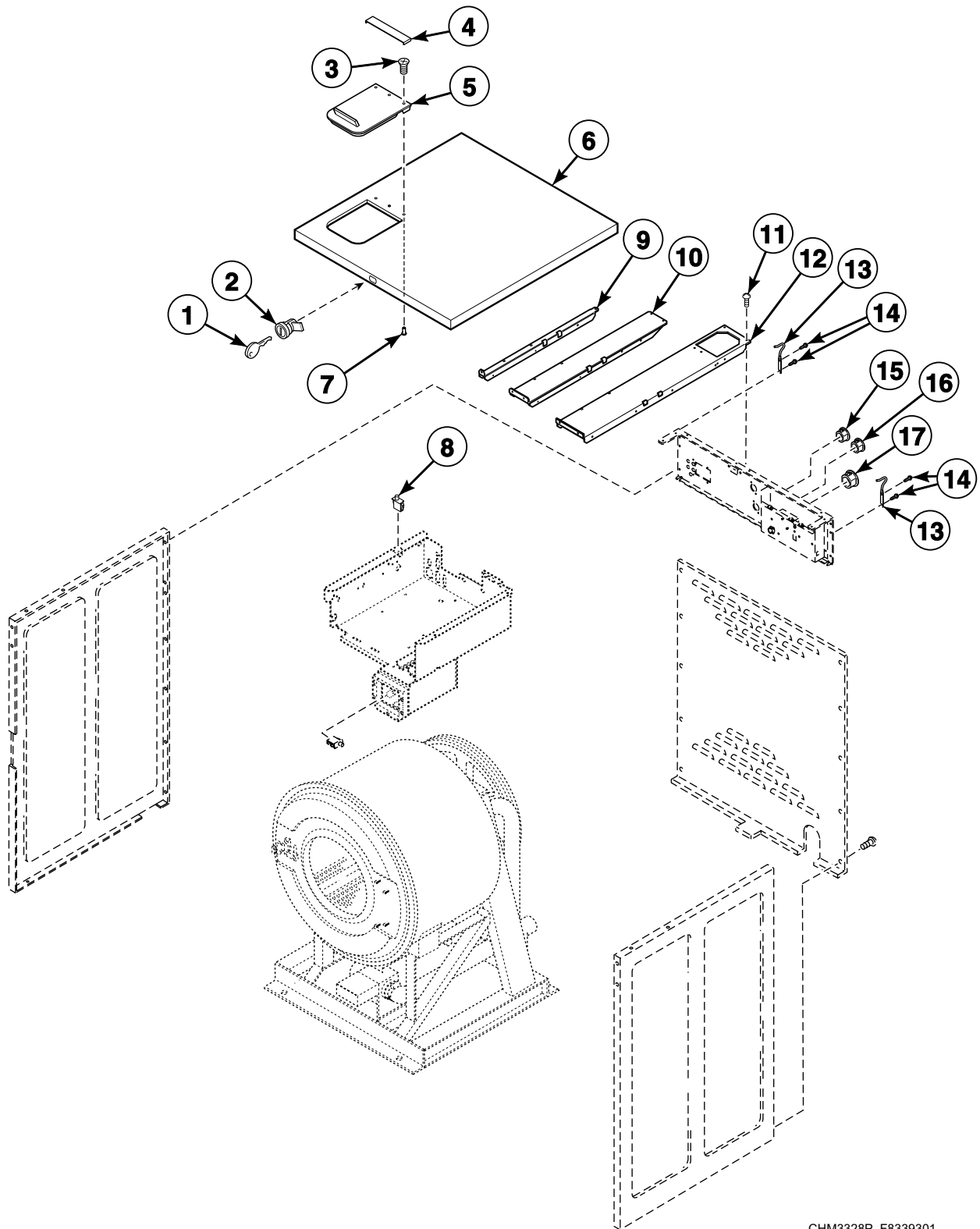
Control Panel Overlays



CHM3189P_F8339301

SCL3 P17

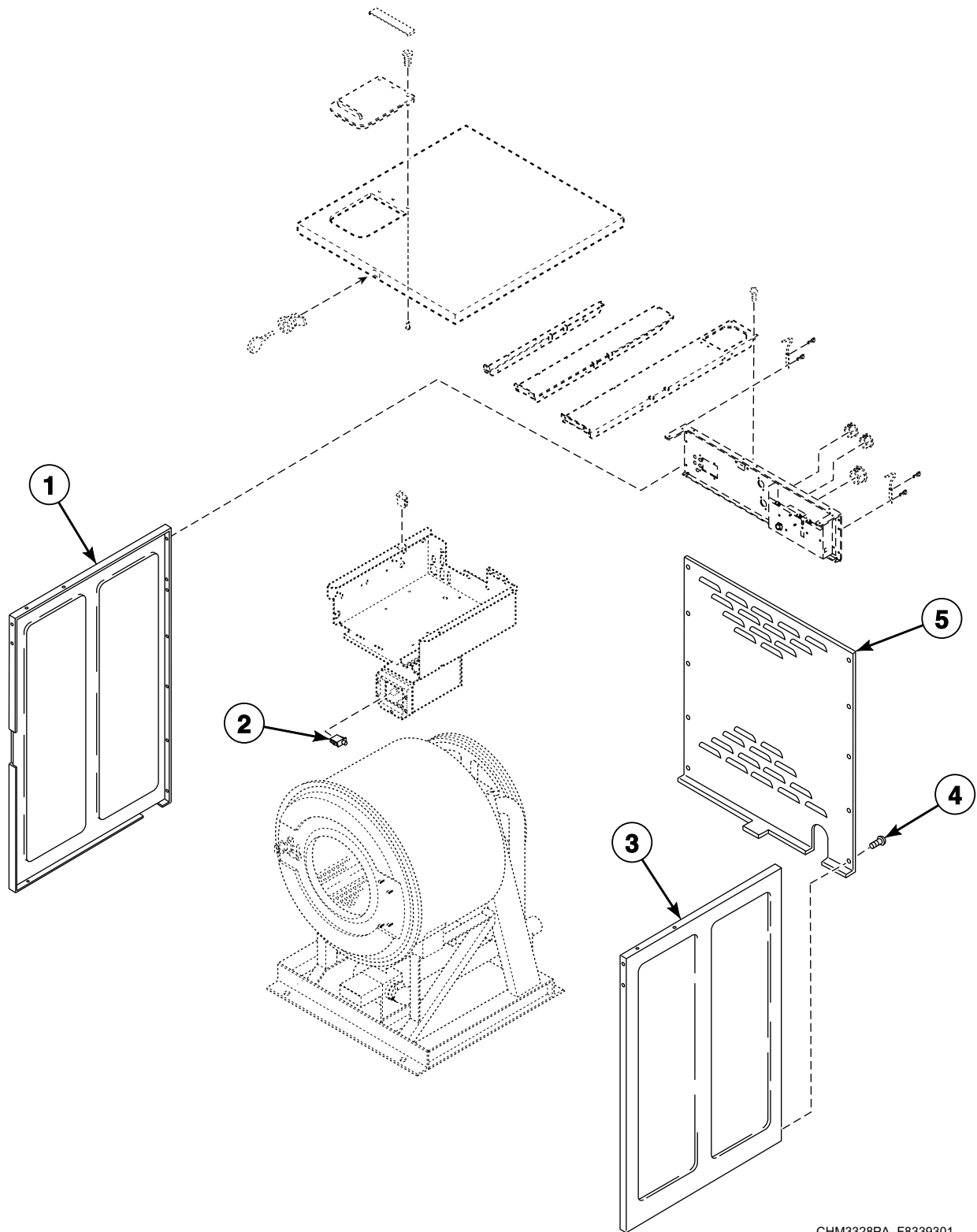
Panels (Drawing 1 of 2)



CHM3328P_F8339301

SCL3 P18

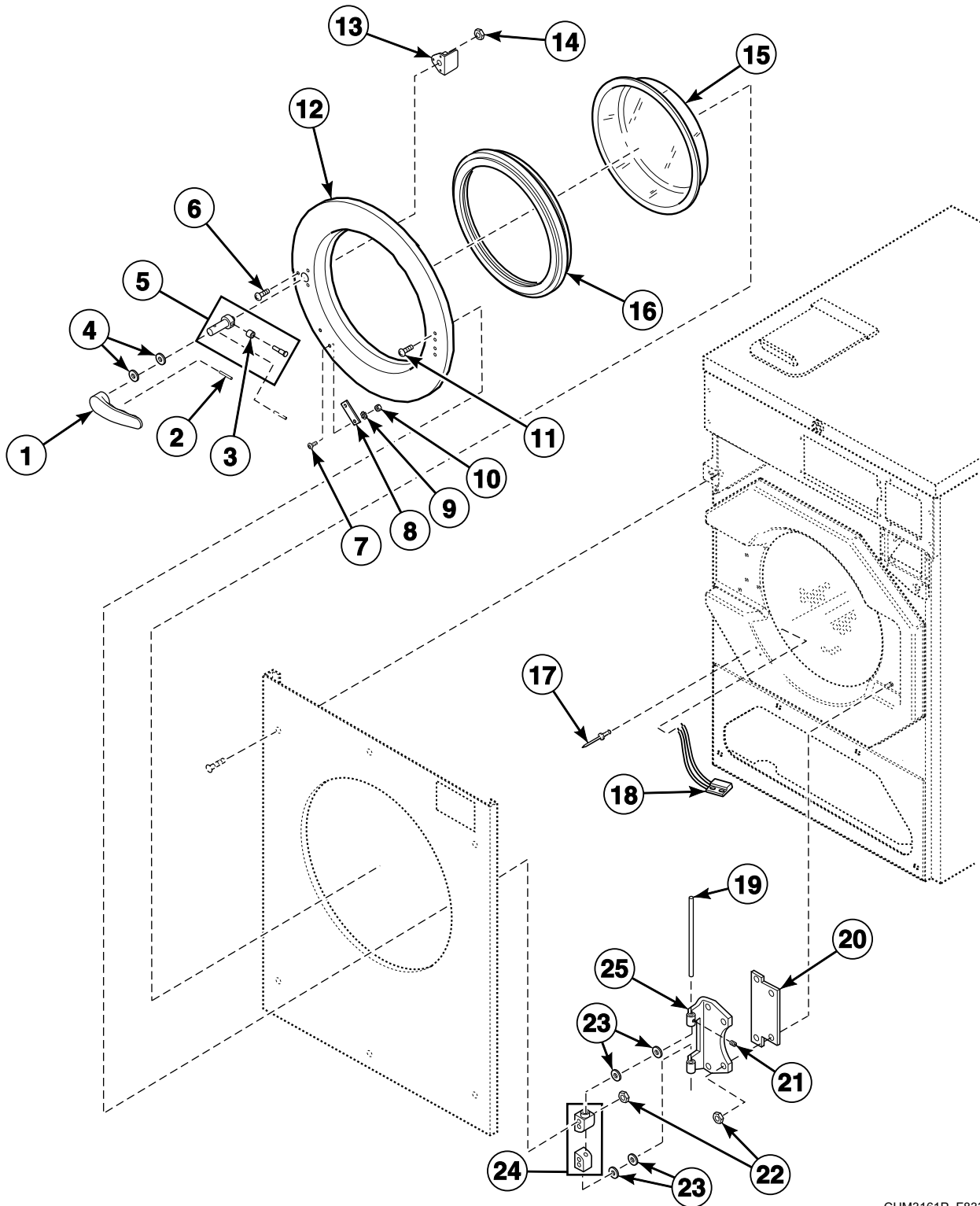
Panels (Drawing 2 of 2)



CHM3328PA_F8339301

SCL3 P19

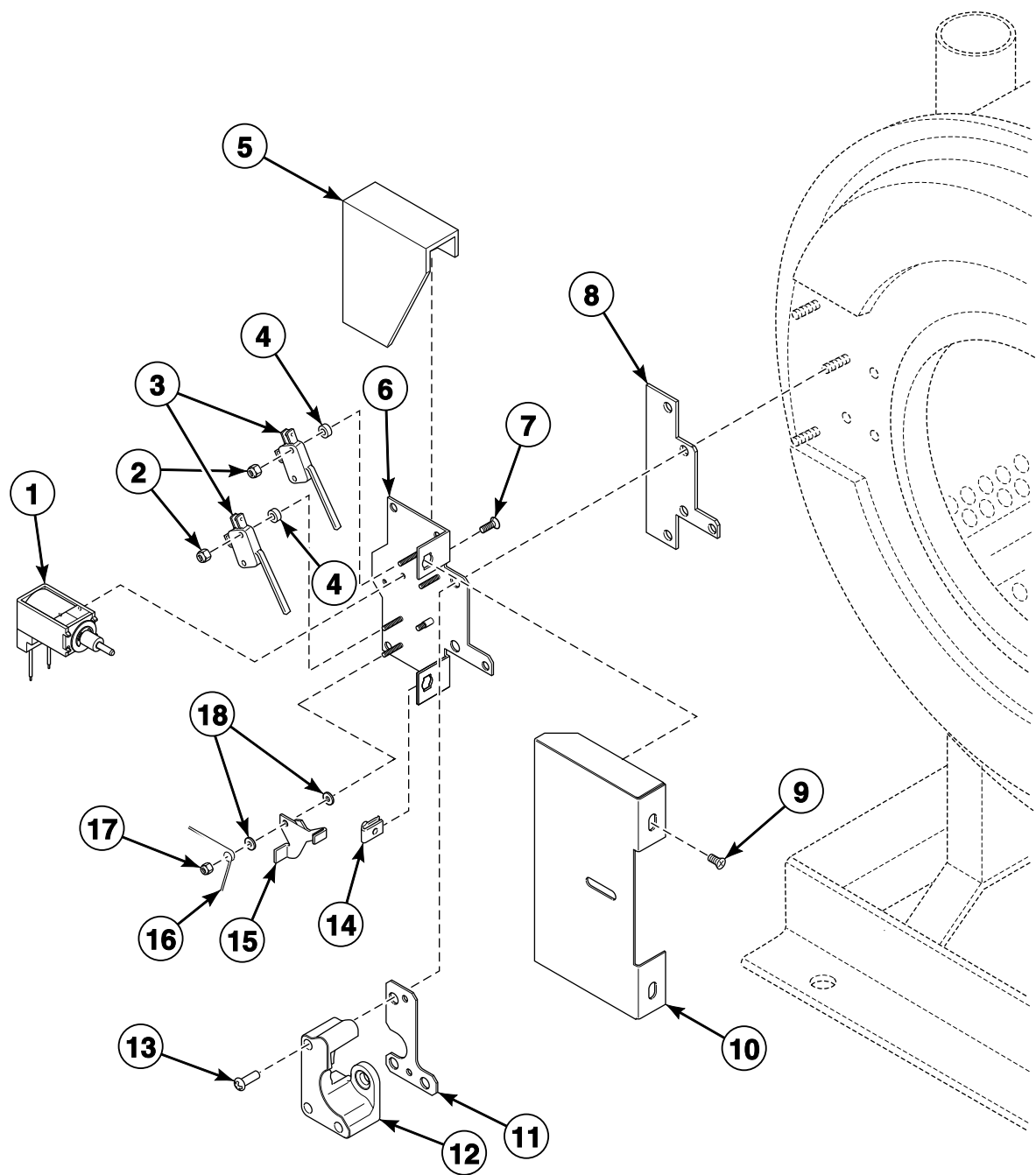
Door



CHM3161P_F8339301

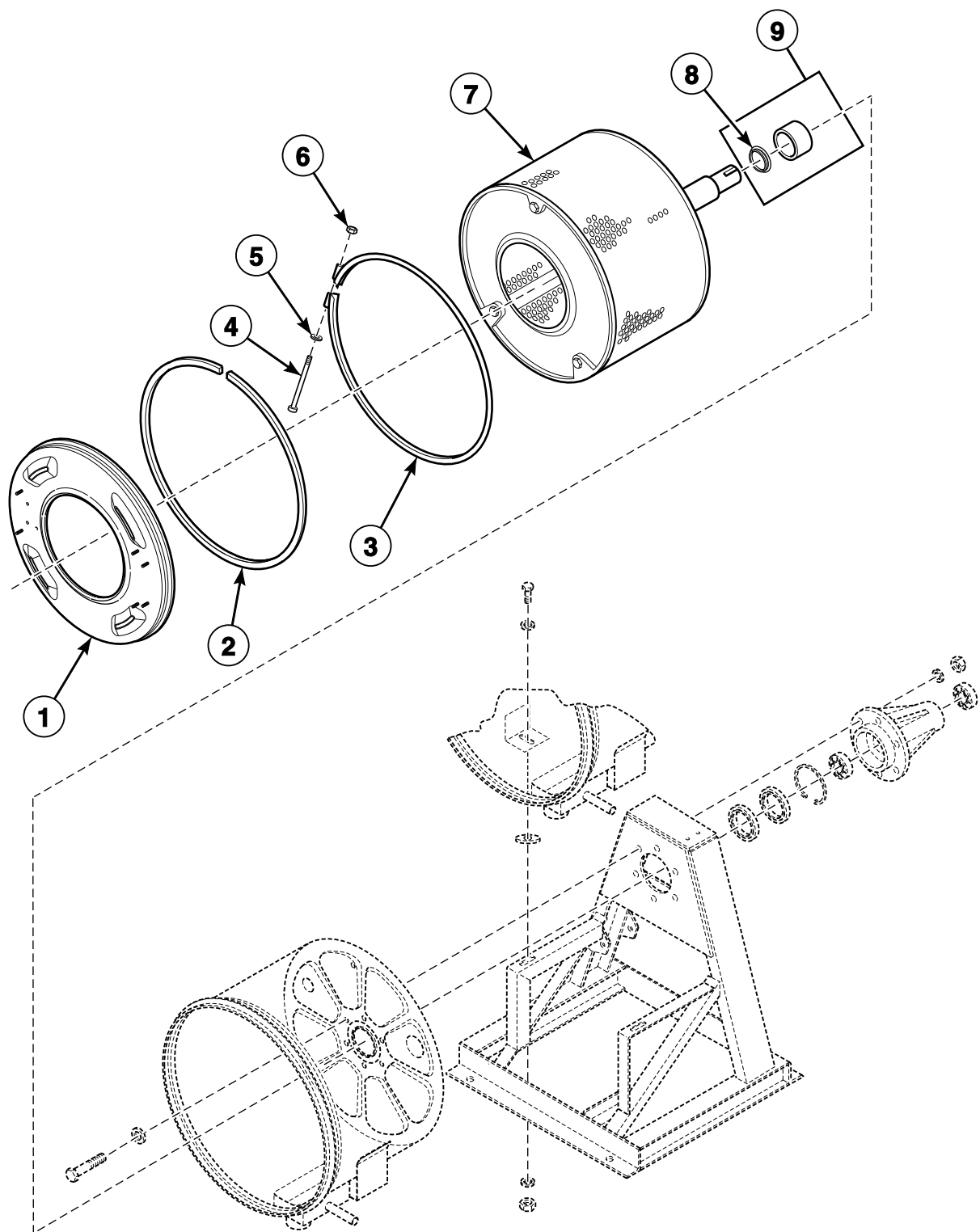
SCL3 P20

Door Lock



CHM1208P_F8339301

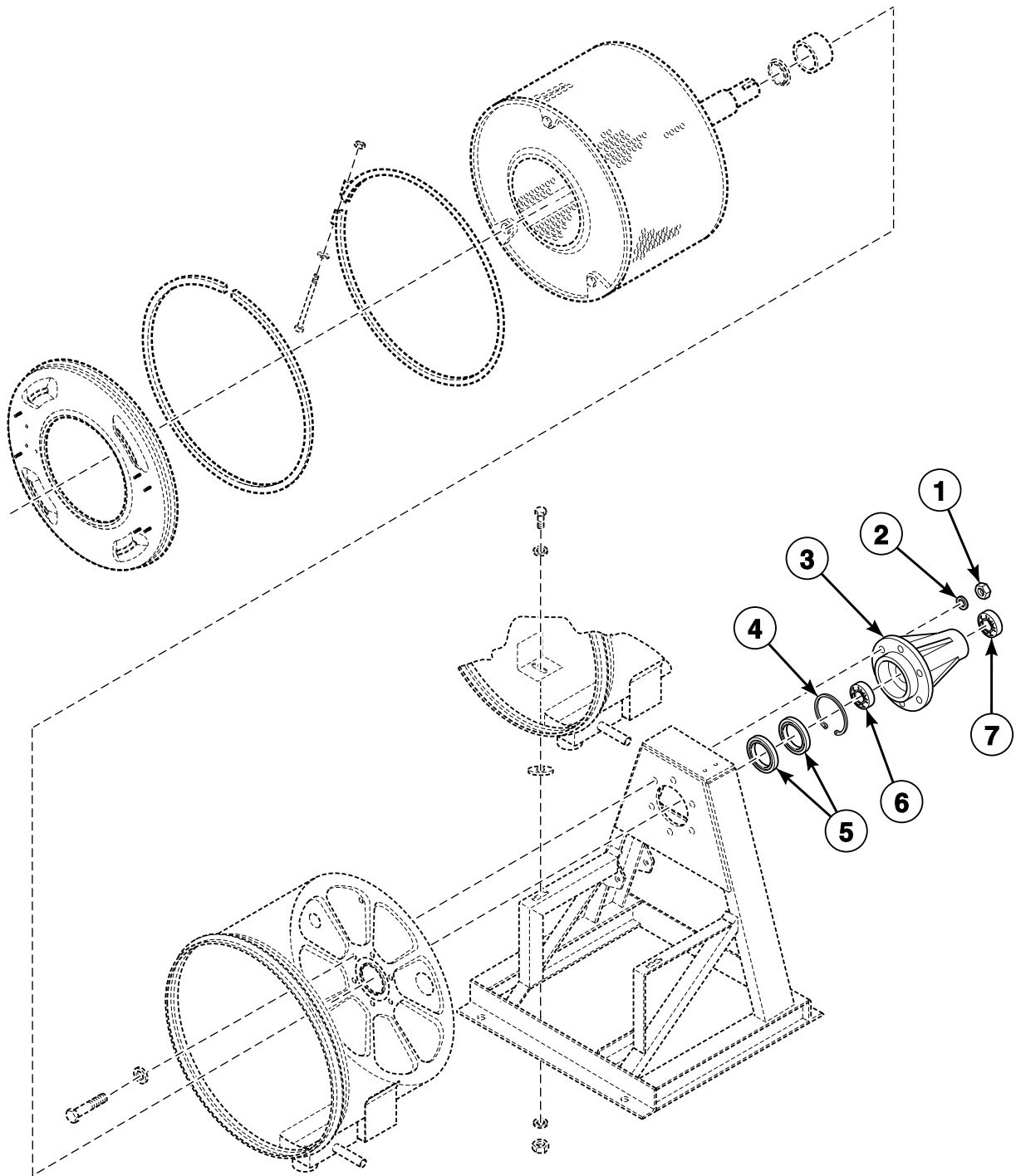
Basket, Shell, Frame and Trunnion - Design 1 Models (Drawing 1 of 3)



CHM3153P_F8339301

SCL3 P22

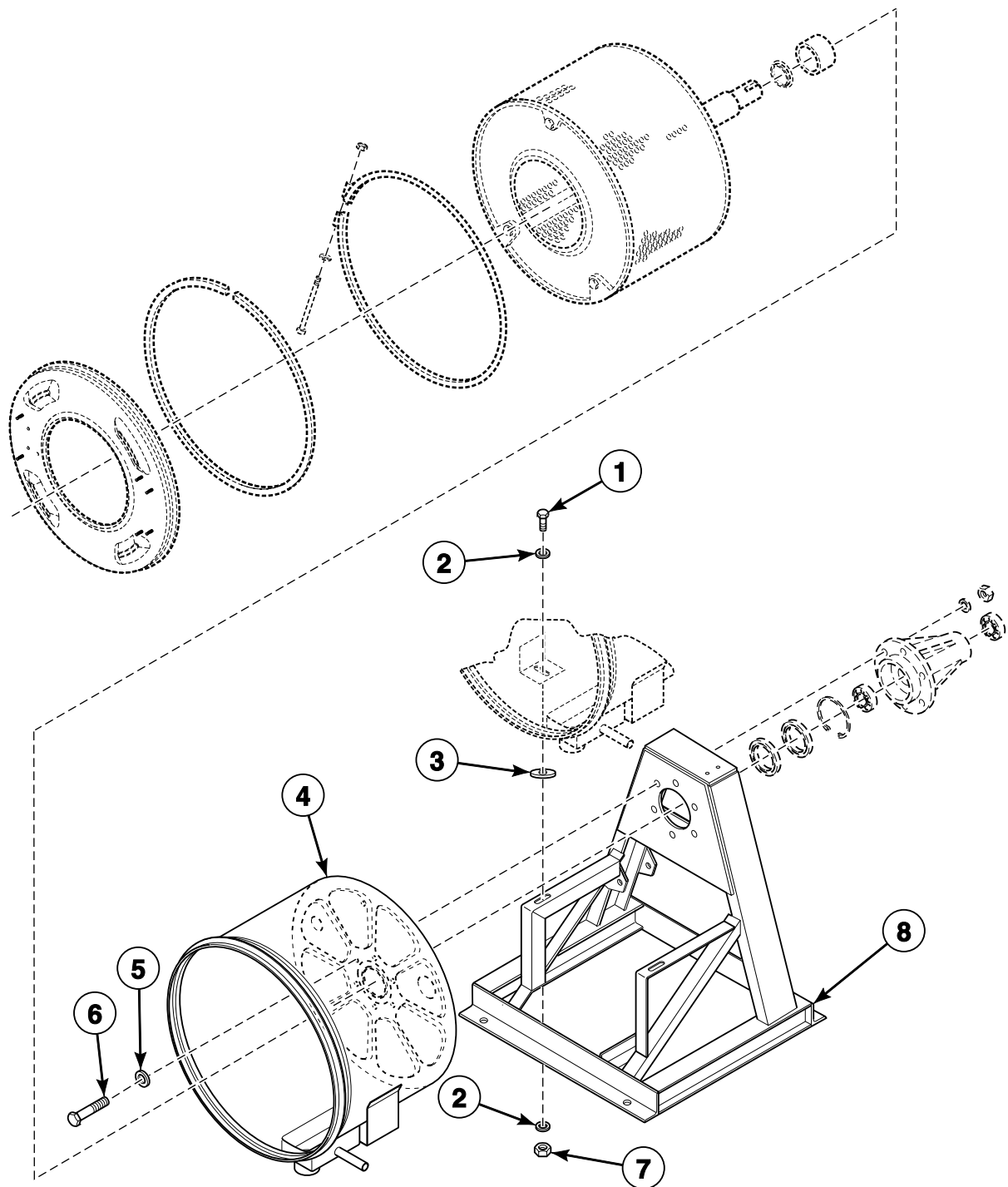
Basket, Shell, Frame and Trunnion - Design 1 Models (Drawing 2 of 3)



CHM3153PA_F8339301

SCL3 P23

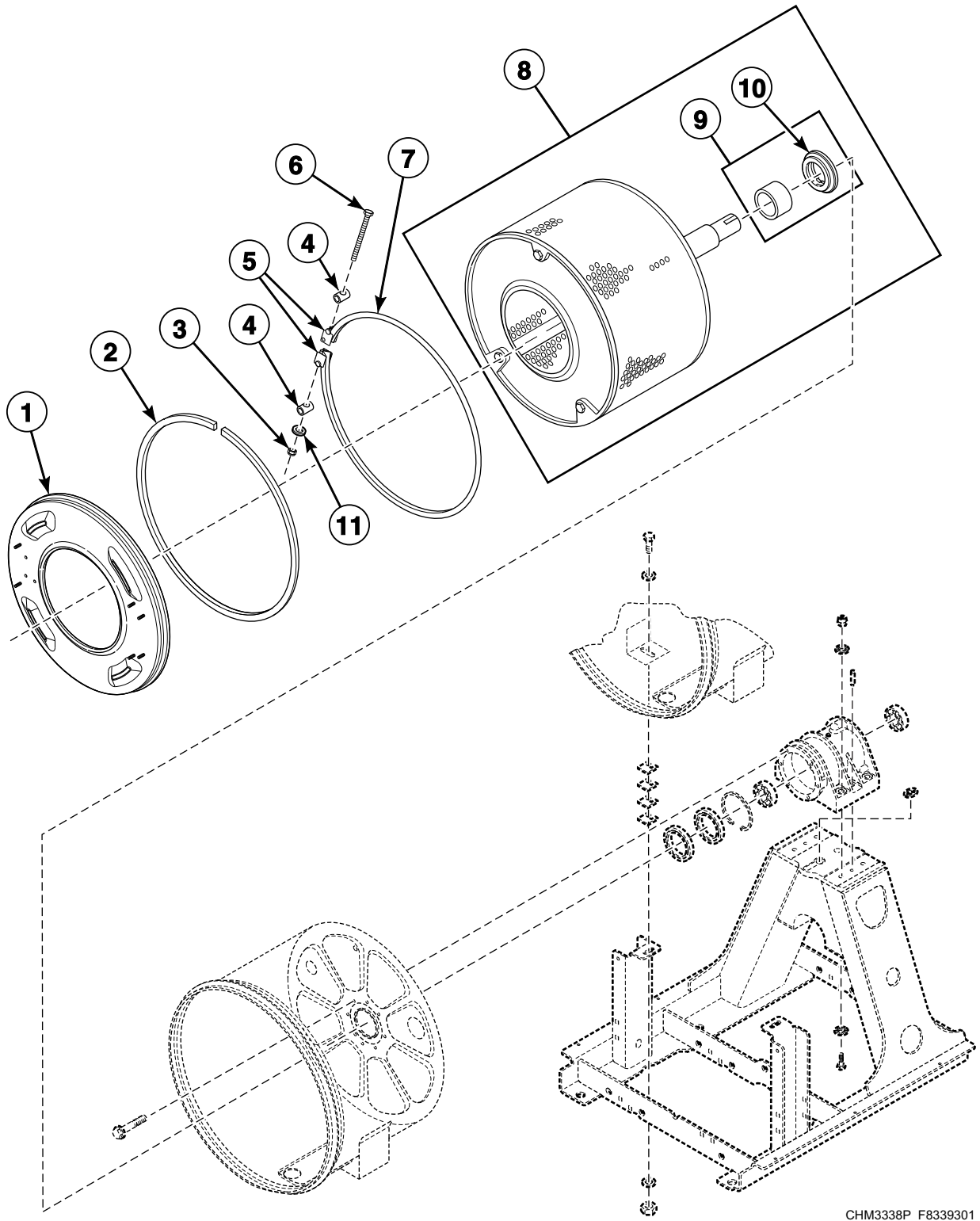
Basket, Shell, Frame and Trunnion - Design 1 Models (Drawing 3 of 3)



CHM3153PB_F8339301

SCL3 P24

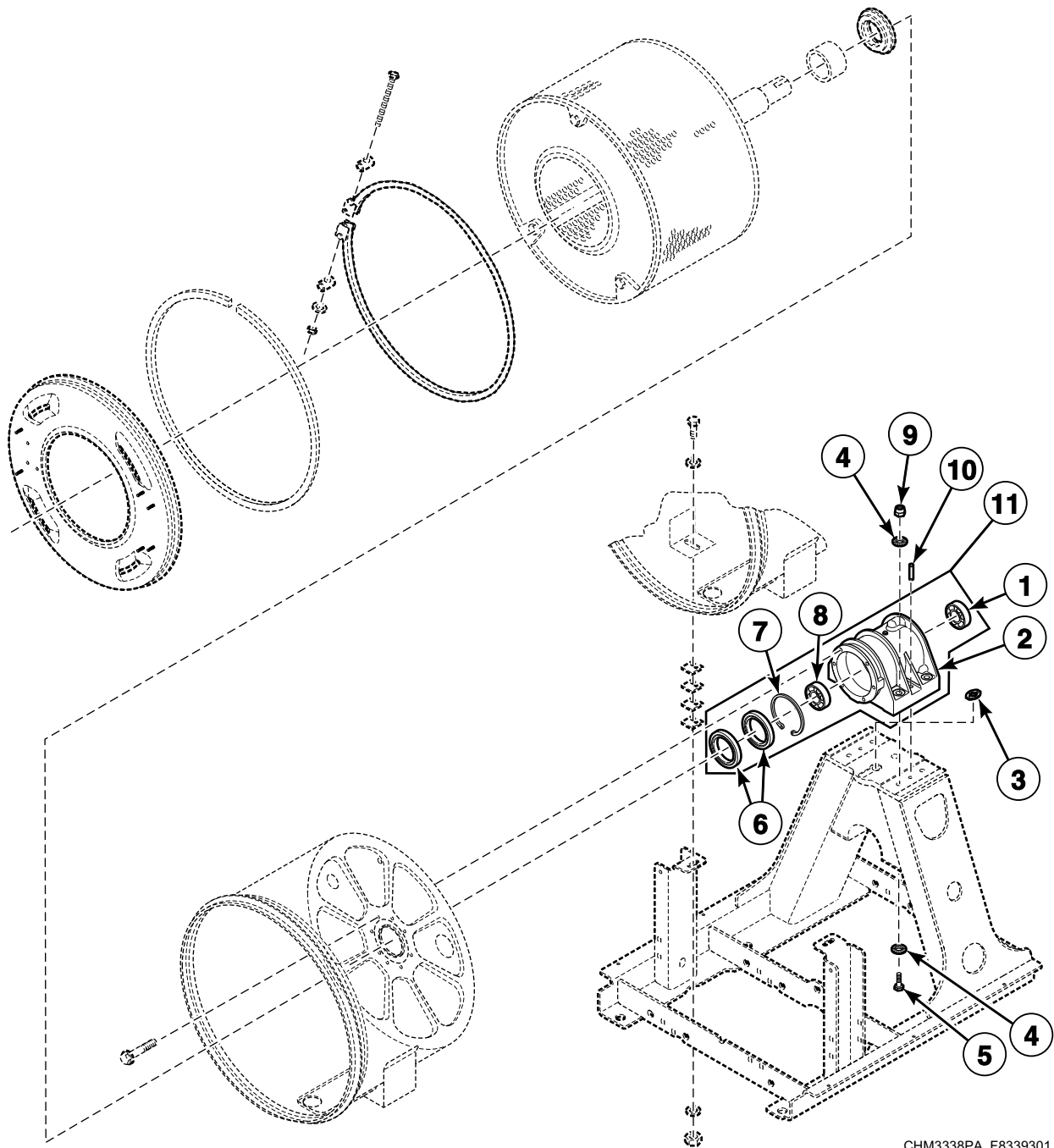
Basket, Shell, Frame and Bearing Housing - Design 2 and 3 Models (Drawing 1 of 3)



CHM3338P_F8339301

SCL3 P25

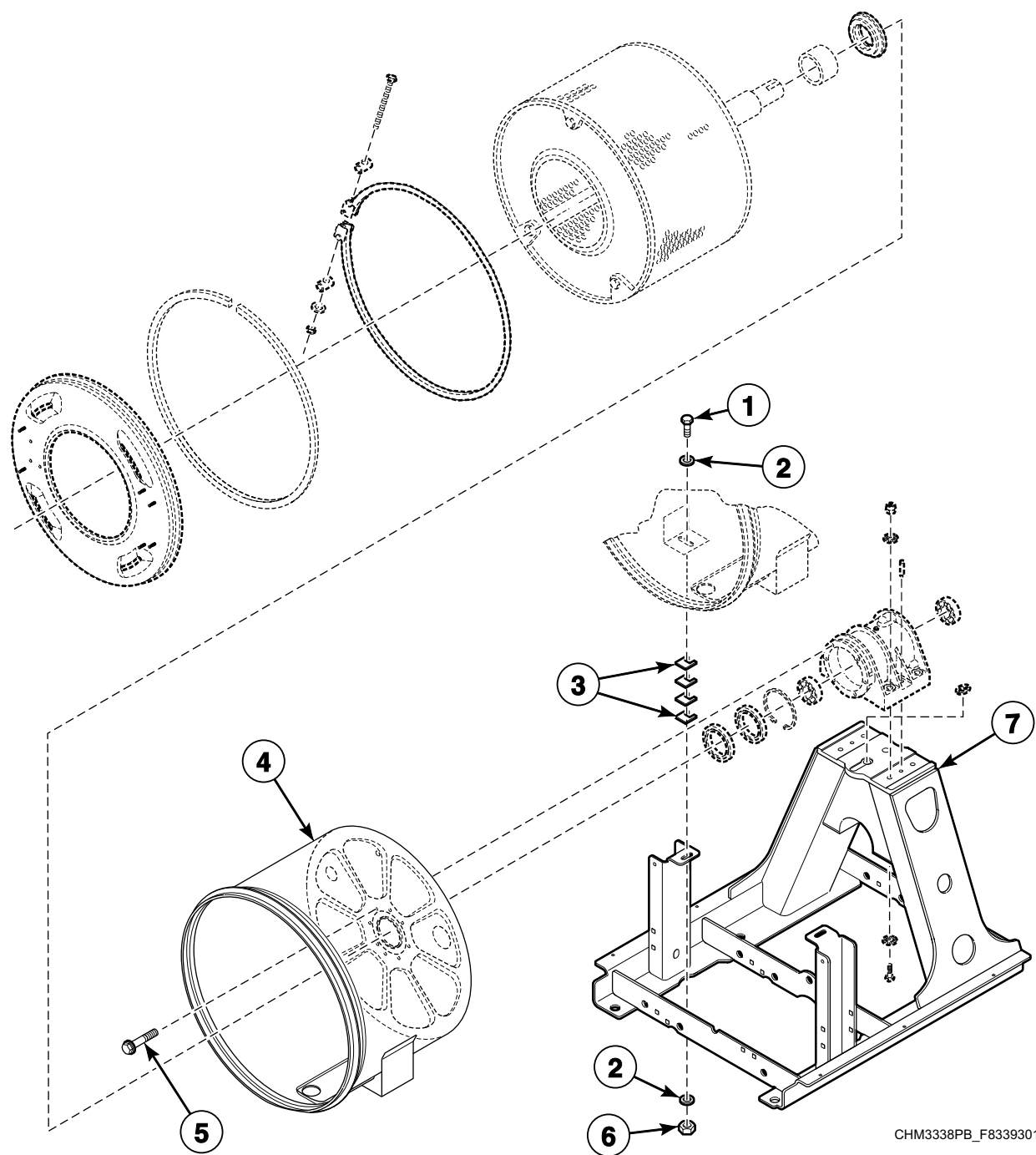
**Basket, Shell, Frame and Bearing Housing - Design 2 and 3 Models
(Drawing 2 of 3)**



CHM3338PA_F8339301

SCL3 P26

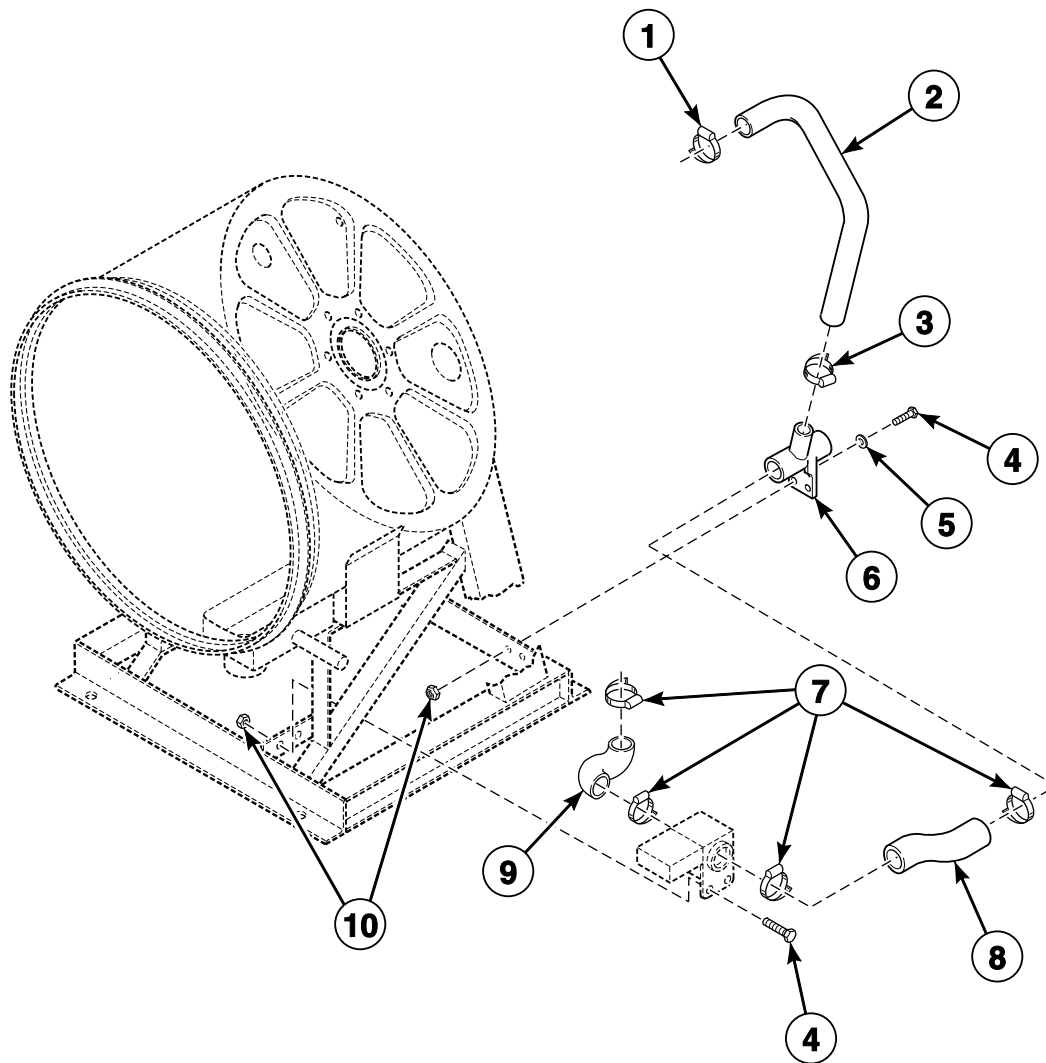
Basket, Shell, Frame and Bearing Housing - Design 2 and 3 Models (Drawing 3 of 3)



CHM3338PB_F8339301

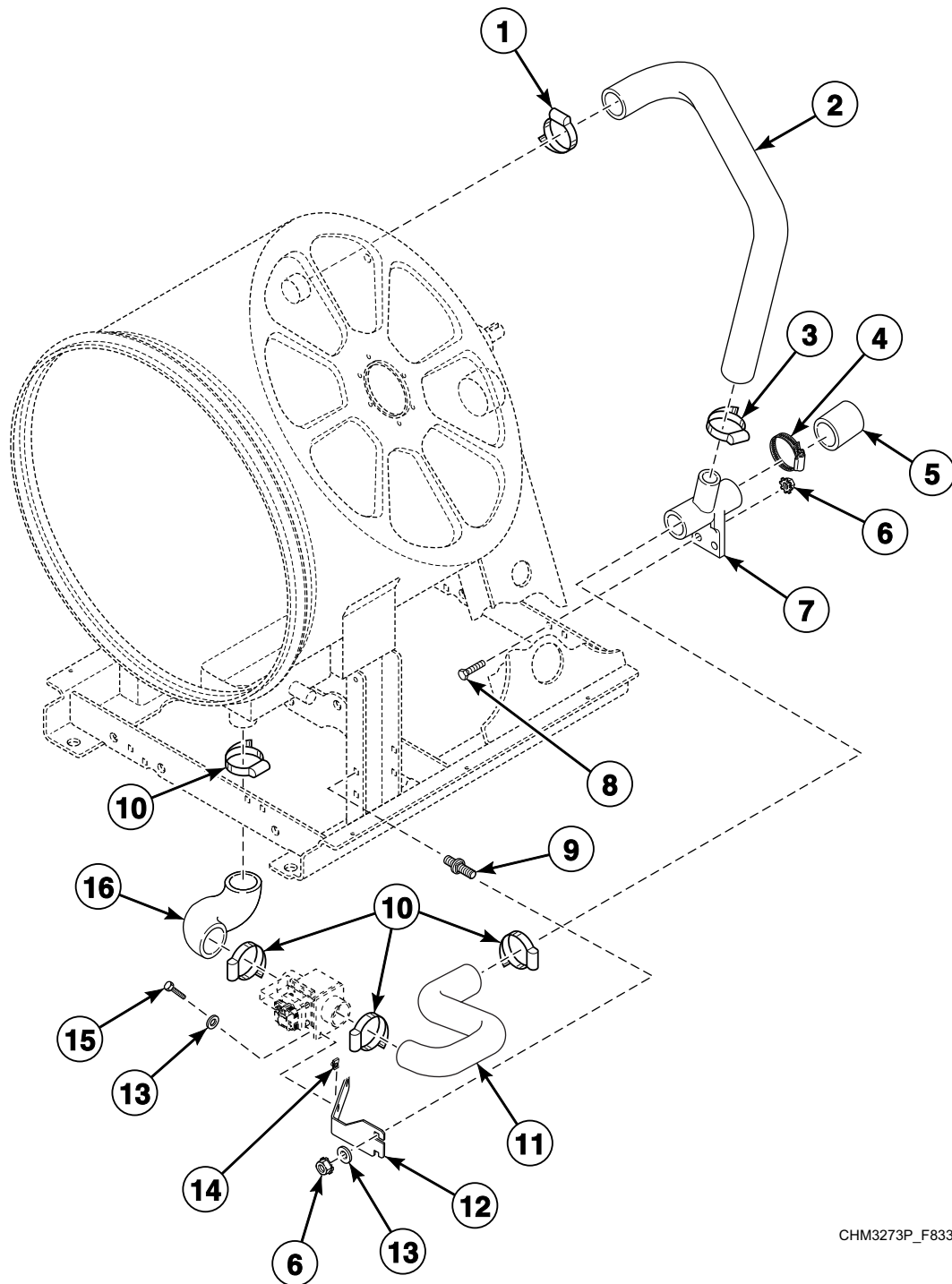
SCL3 P27

Drain Plumbing - Design 1 Models



CHM3046P_F8339301

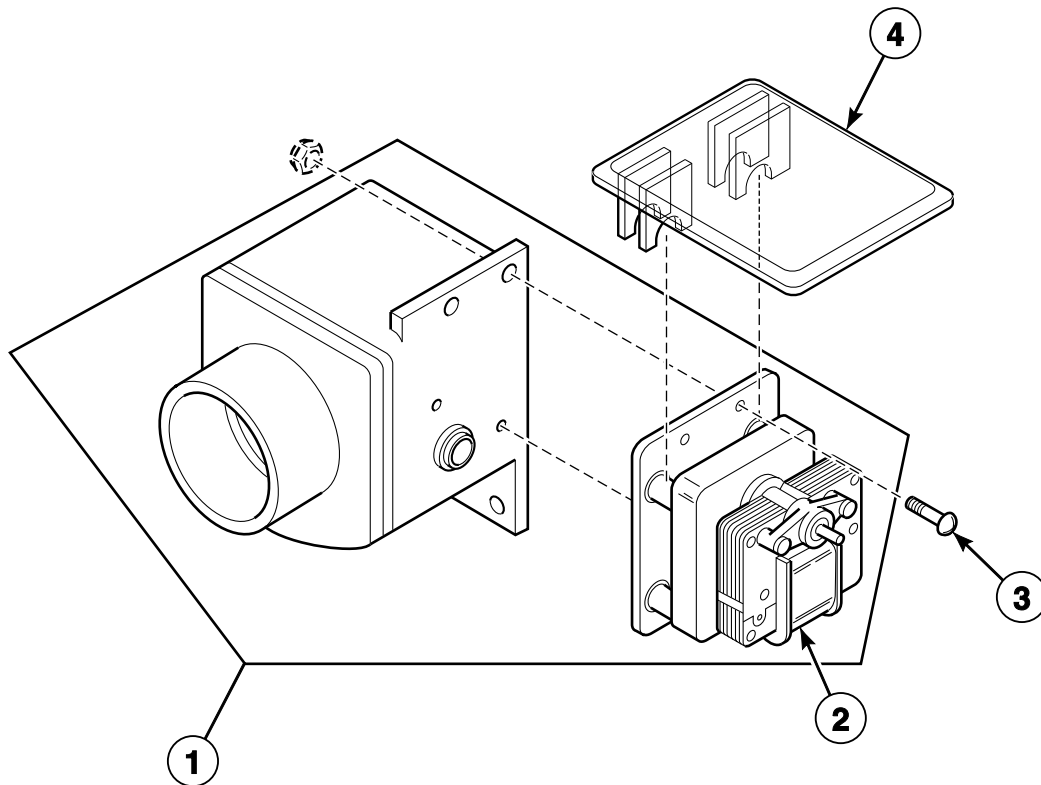
Drain Plumbing - Design 2 and 3 Models



CHM3273P_F8339301

SCL3 P29

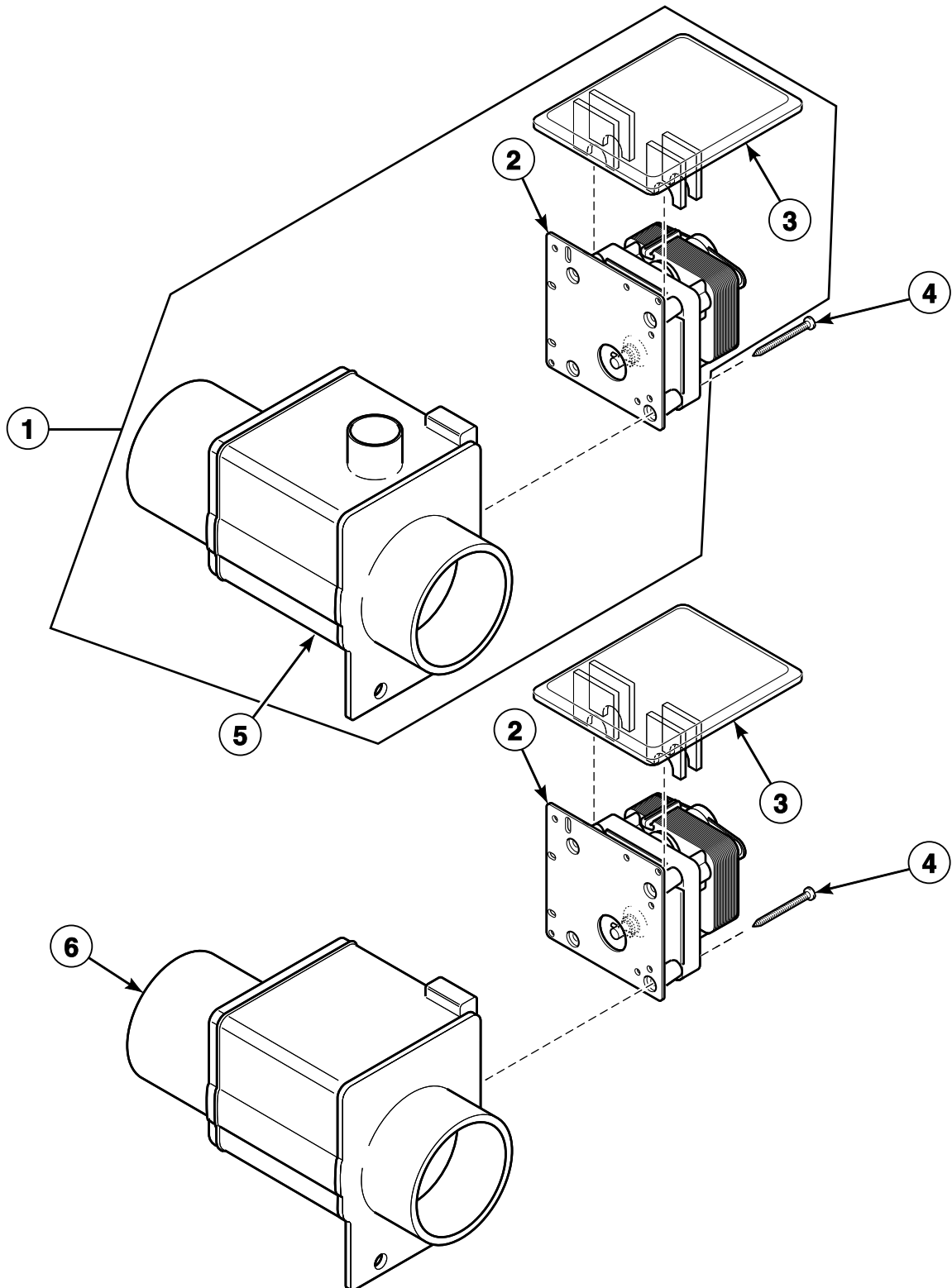
Drain Valve Assembly - 20 and 30 Pound Models



CHM2450P_F8339301

SCL3 P30

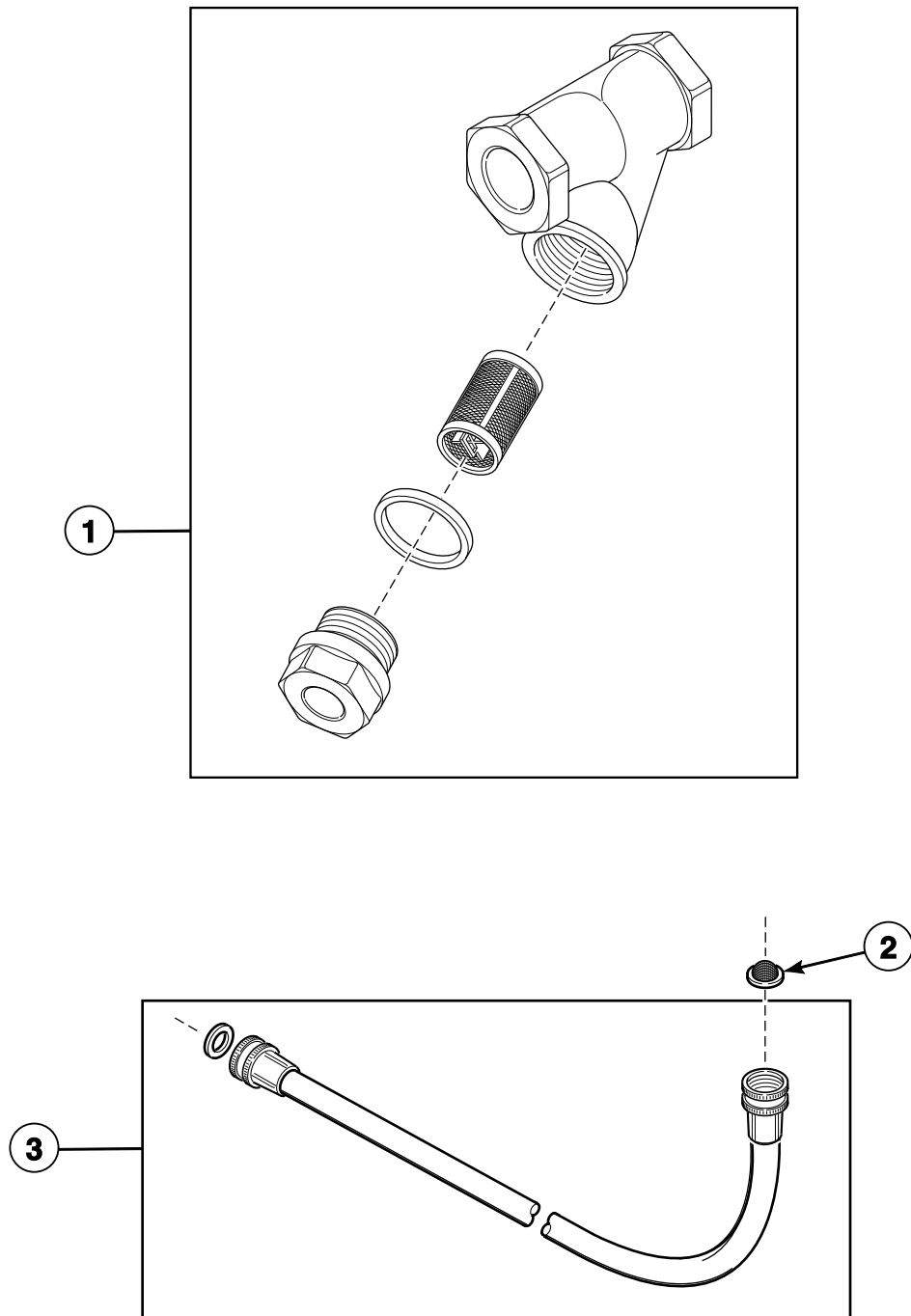
Drain Valve Assembly - 40 and 60 Pound Models



CHM3081P_F8339301

SCL3 P31

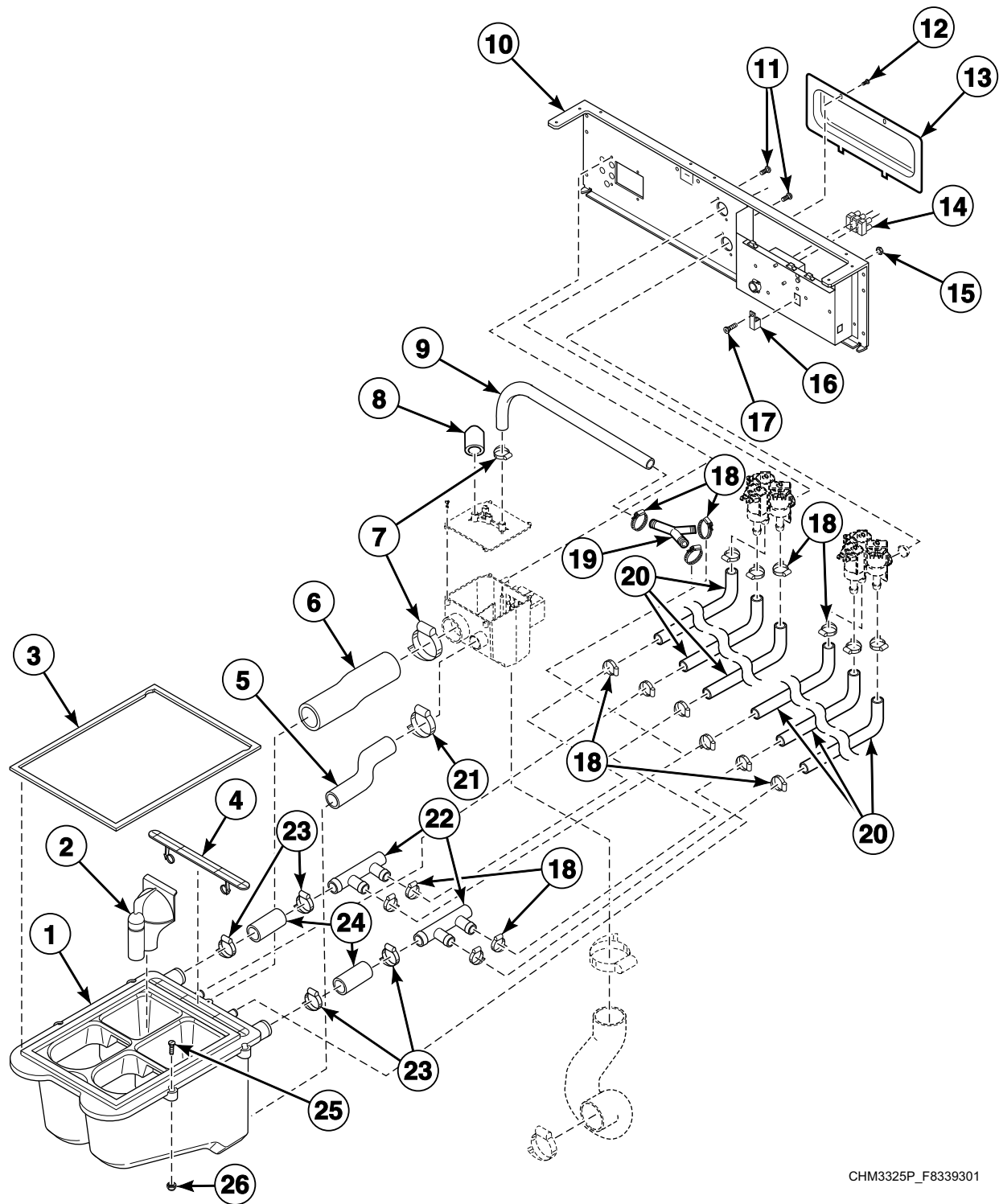
Steam Filter (Optional) and Water Supply Hose



CHM3049P_F8339301

SCL3 P32

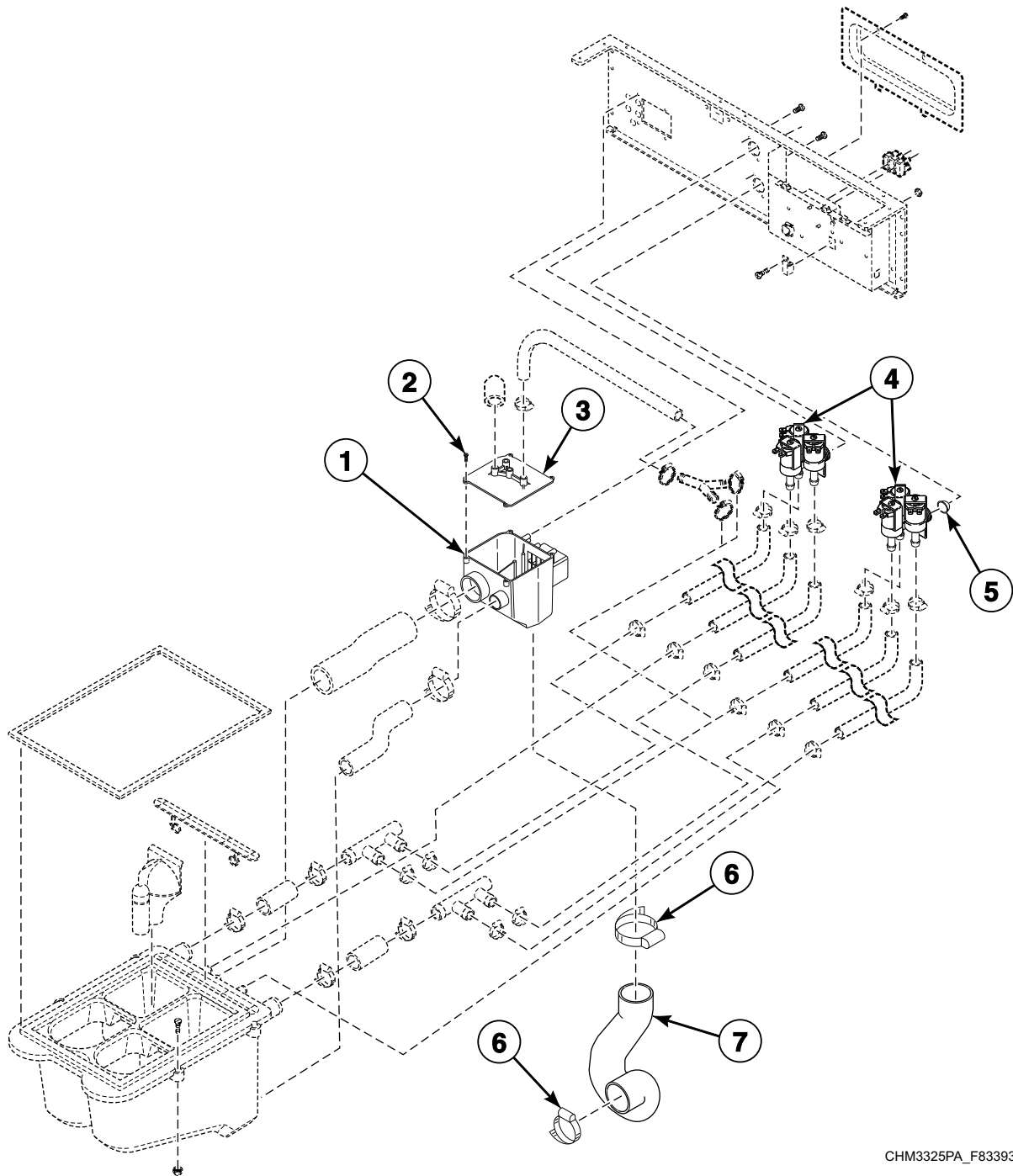
Fill Plumbing Assembly (Drawing 1 of 2)



CHM3325P_F8339301

SCL3 P33

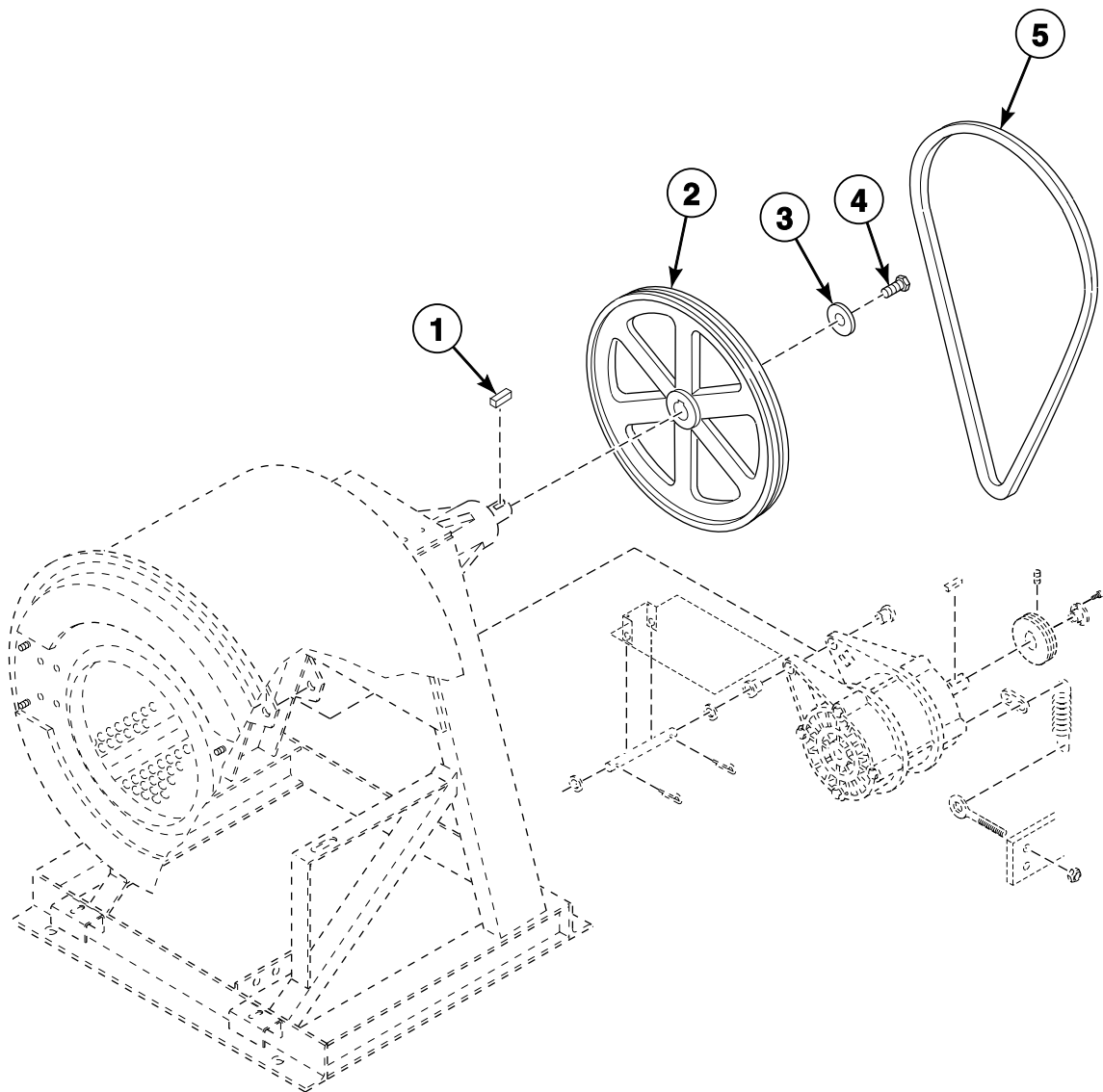
Fill Plumbing Assembly (Drawing 2 of 2)



CHM3325PA_F8339301

SCL3 P34

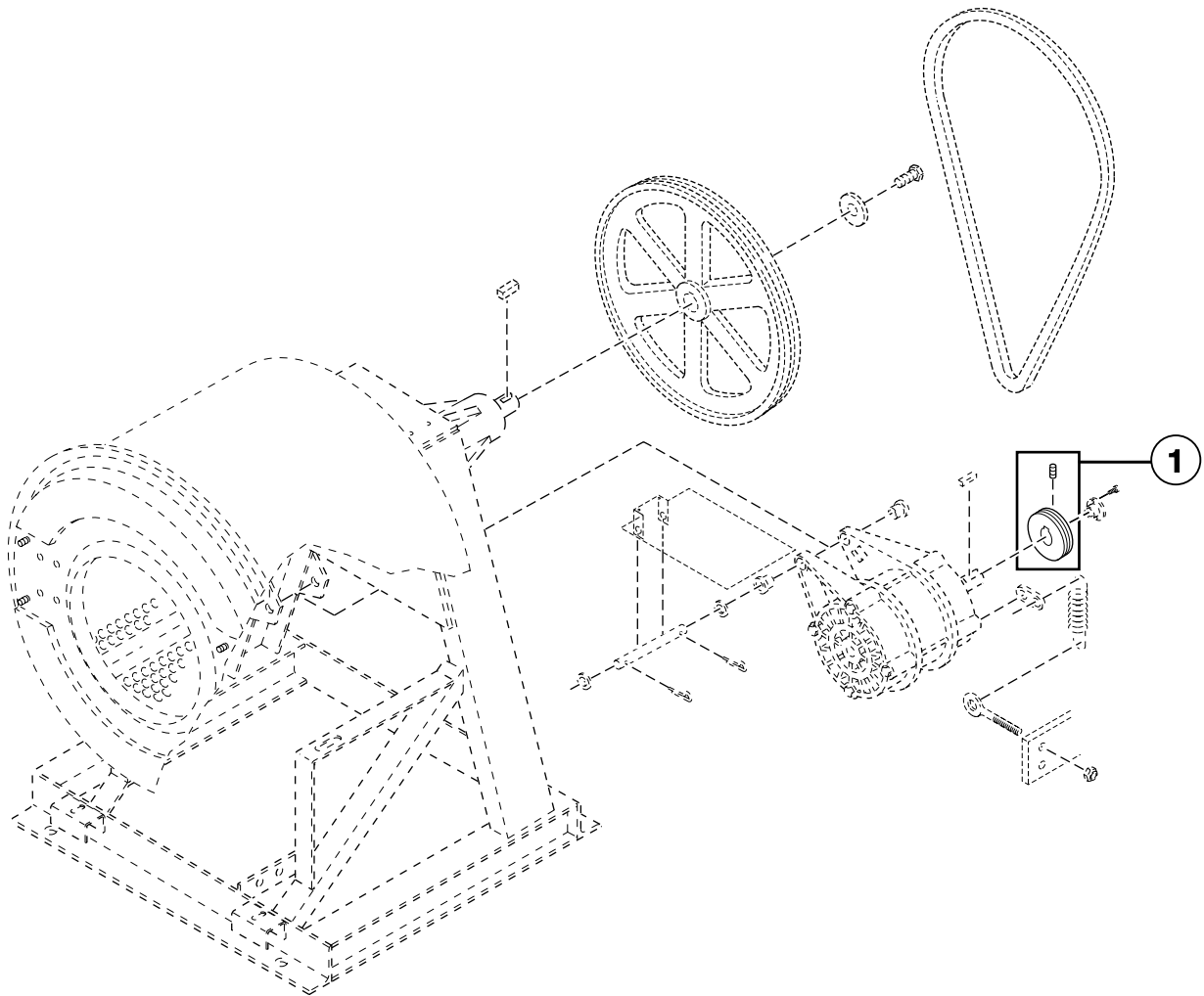
Pulley and Belt - Design 1 Models (Drawing 1 of 3)



CHM3050P_F8339301

SCL3 P35

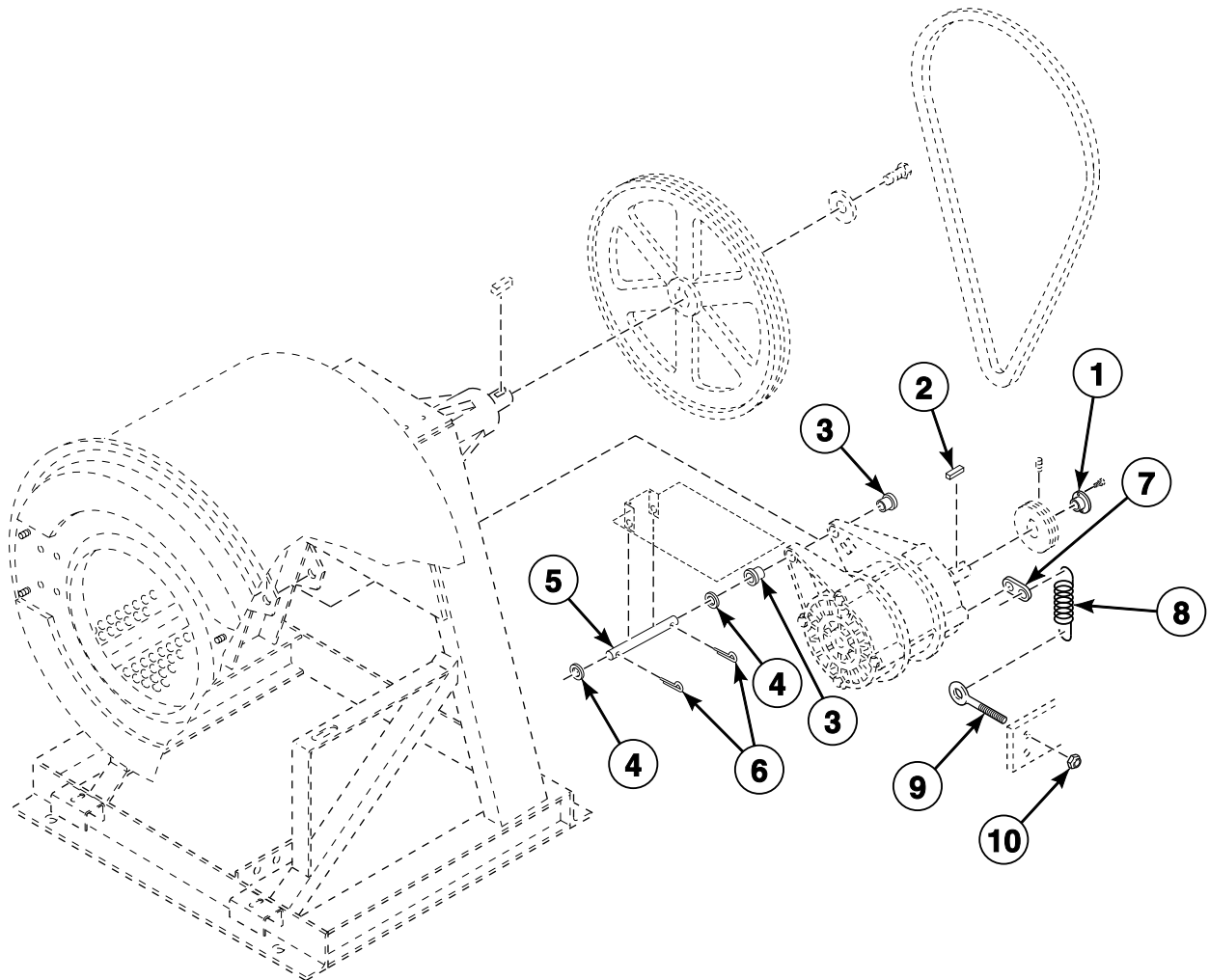
Pulley and Belt - Design 1 Models (Drawing 2 of 3)



CHM3050PA_F8339301

SCL3 P36

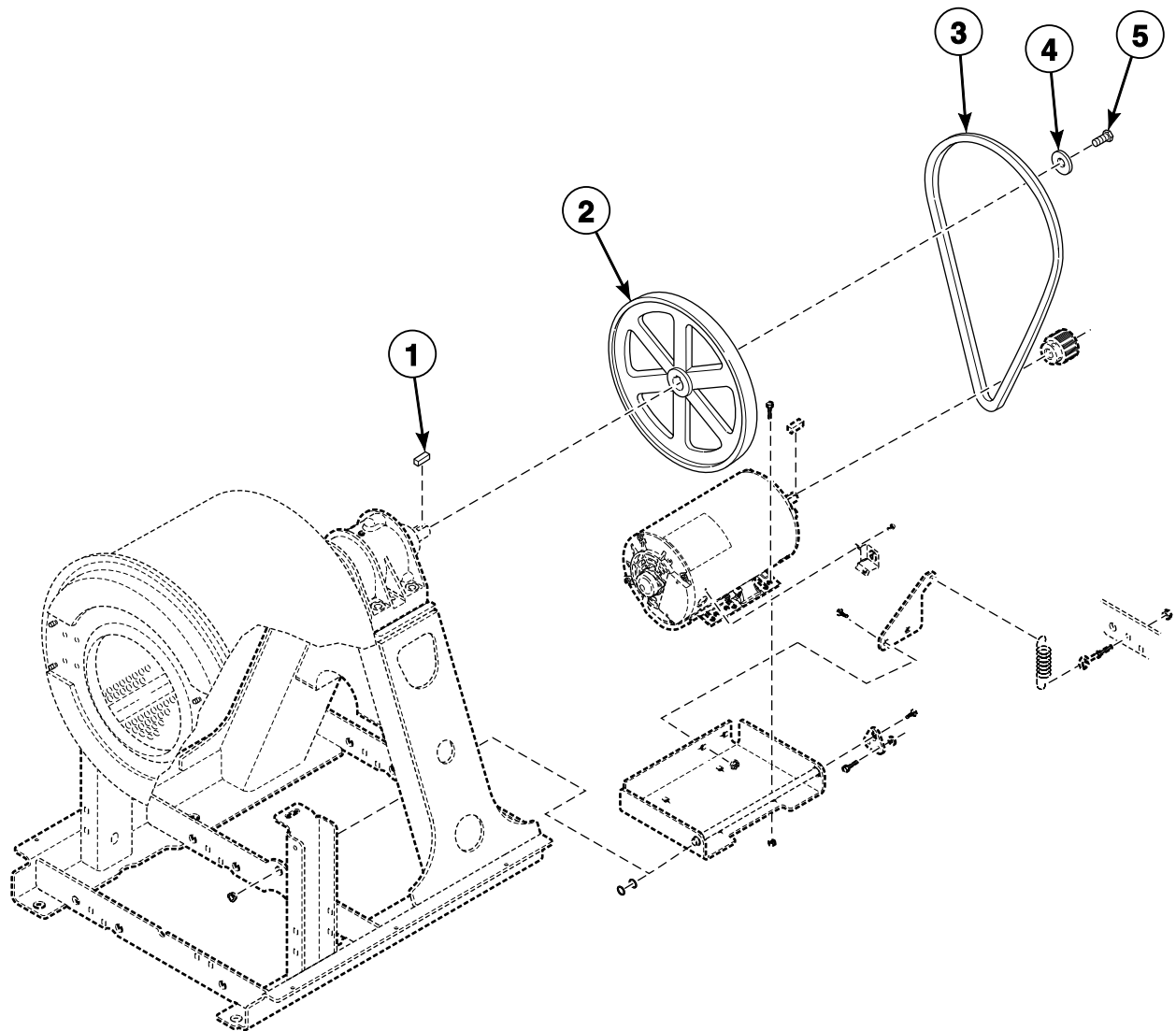
Pulley and Belt - Design 1 Models (Drawing 3 of 3)



CHM3050PB_F8339301

SCL3 P37

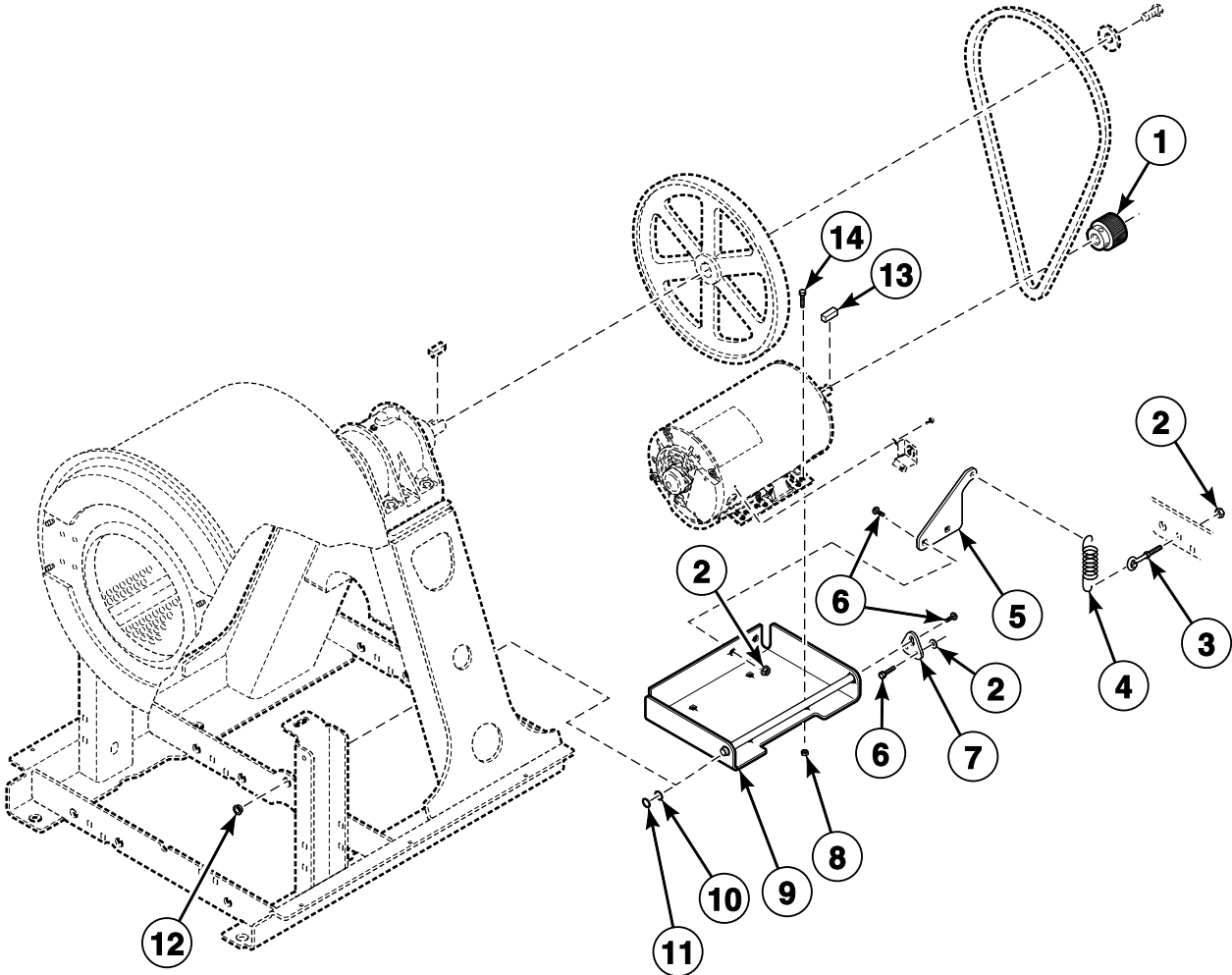
Pulley and Belt - Design 2 and 3 Models (Drawing 1 of 2)



CHM3290P_F8339301

SCL3 P38

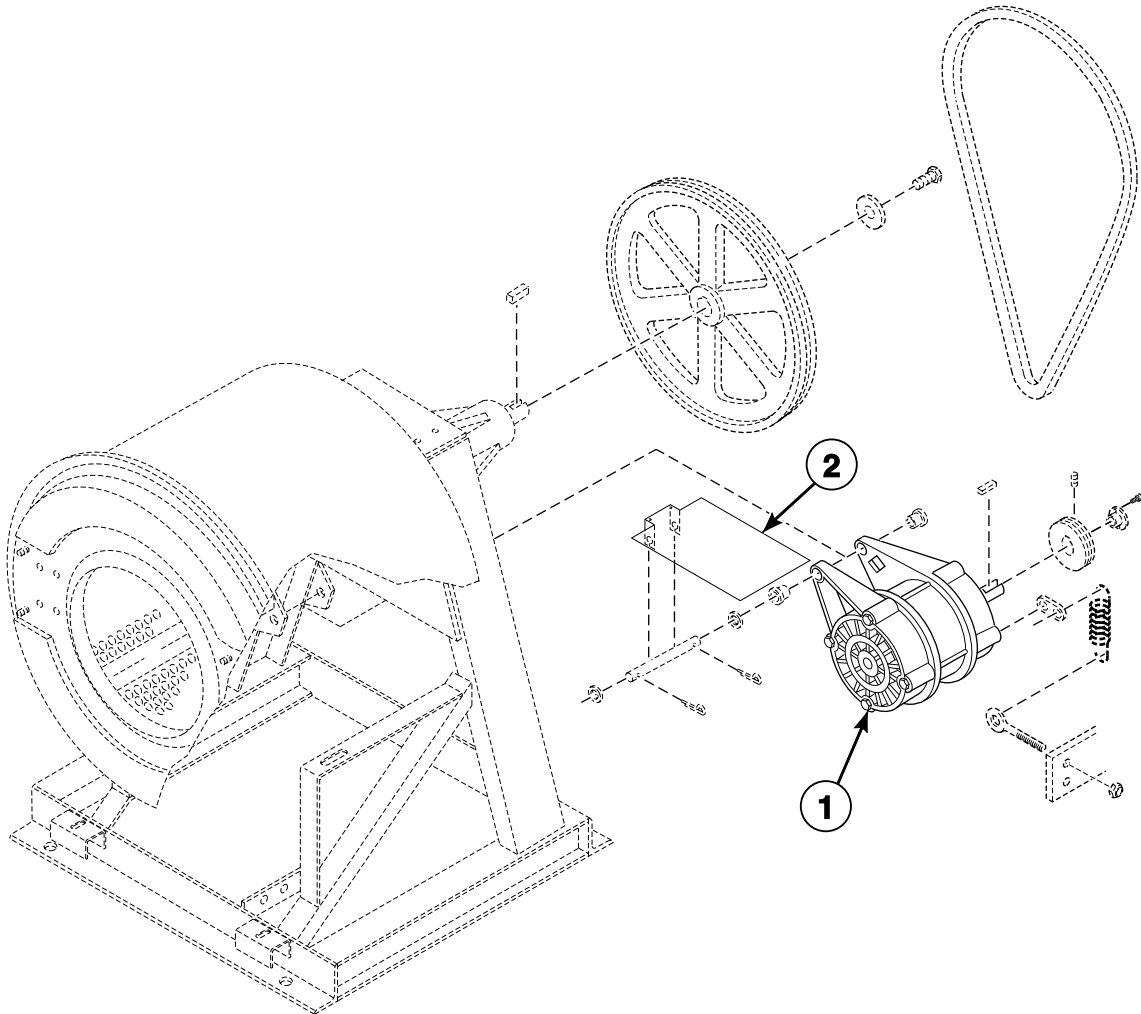
Pulley and Belt - Design 2 and 3 Models (Drawing 2 of 2)



CHM3290PA_F8339301

SCL3 P39

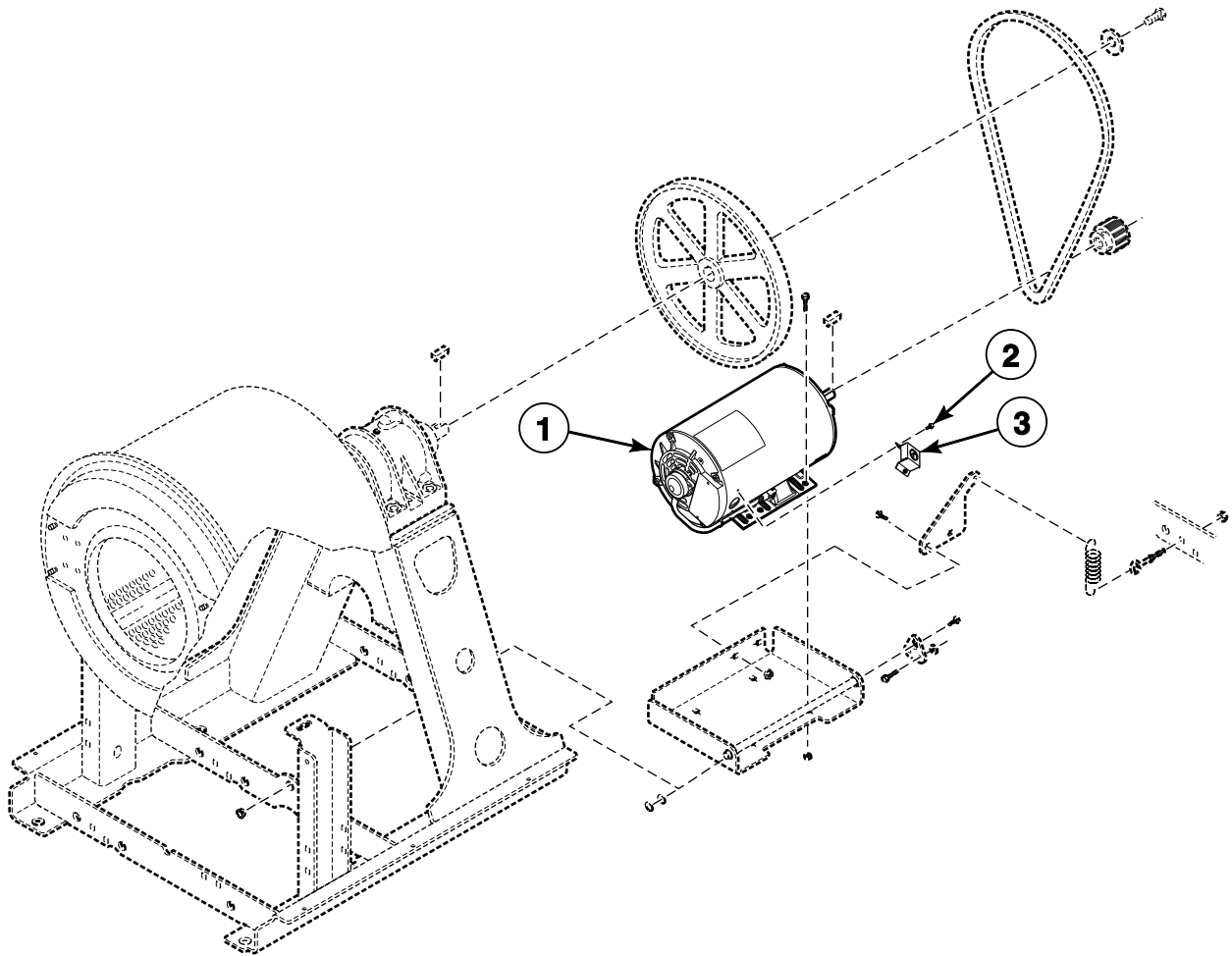
Motor - Design 1 Models



CHM3050PC_F8339301

SCL3 P40

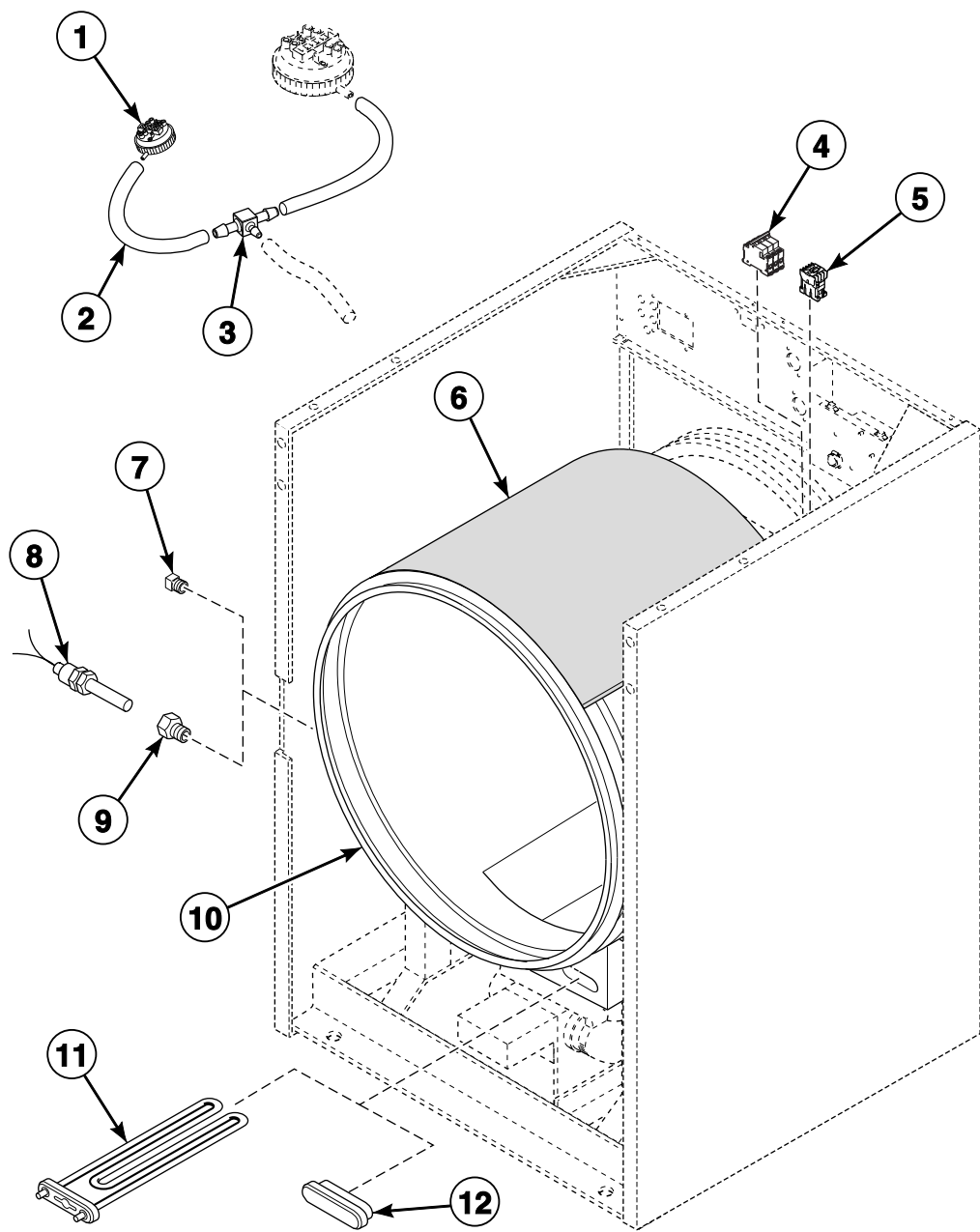
Motor - Design 2 and 3 Models



CHM3290PB_F8339301

SCL3 P41

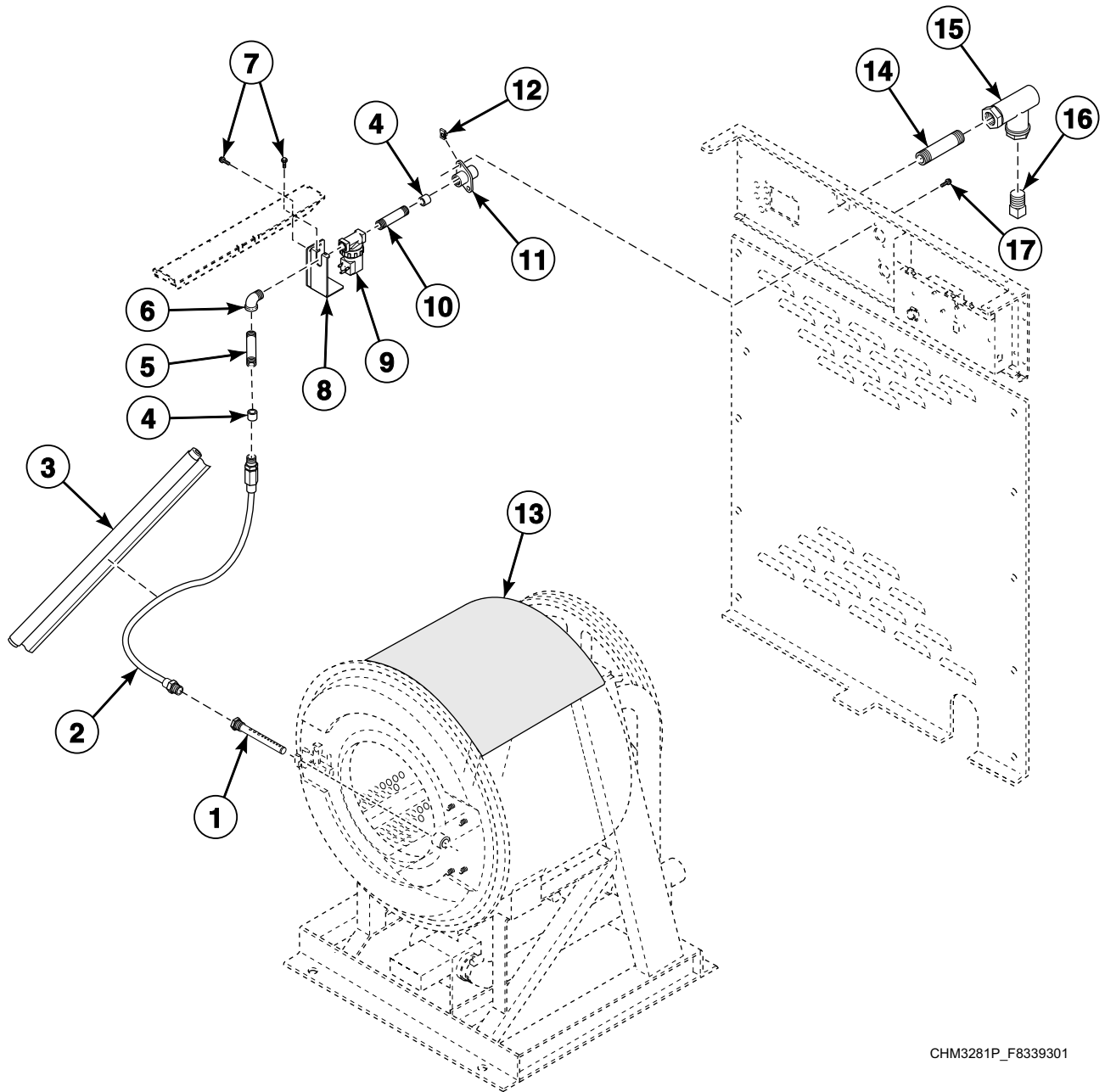
Electric Heat Option



CHM3319P_F8339301

SCL3 P42

Steam Heat Option



CHM3281P_F8339301

SCL3 P43