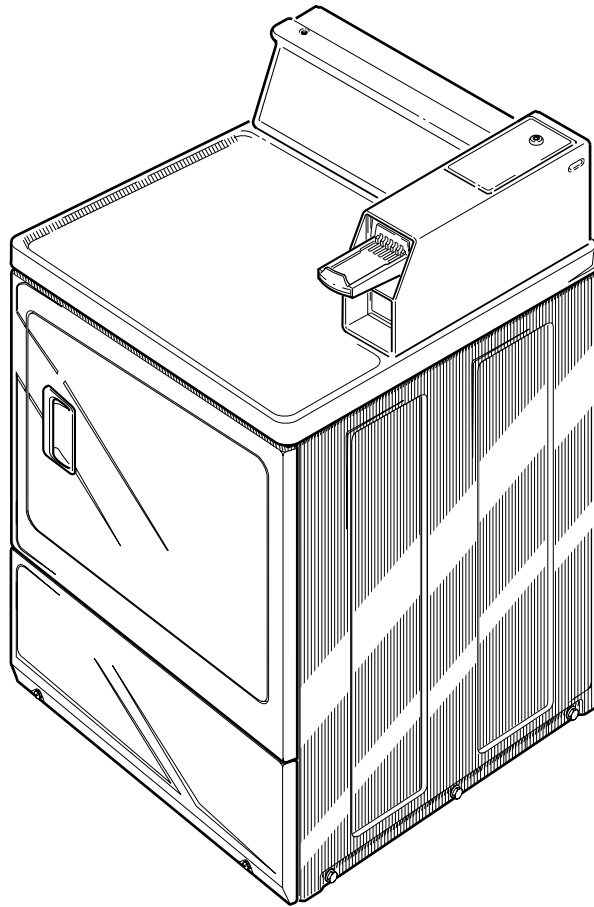


Commercial Dryers **SDE1** Parts

Metered and Nonmetered

Refer to Page 3 for Model Numbers



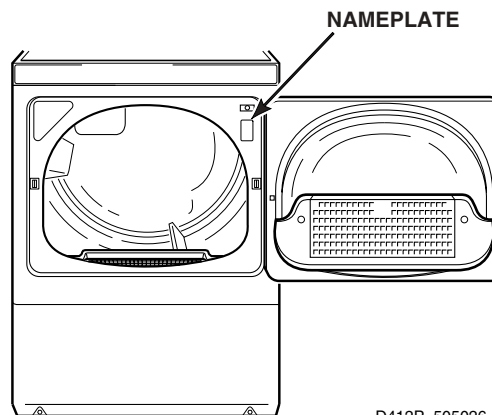
D304P_505026

Parts Ordering Information

If literature or replacement parts are required, contact the source from whom the machine was purchased or contact Alliance Laundry Systems at for the name and address of the nearest authorized parts distributor.

Nameplate Location

When calling or writing about your product, be sure to mention model and serial numbers. Model and serial numbers are located on nameplate(s) as shown.



D412P_505026

Model Identification

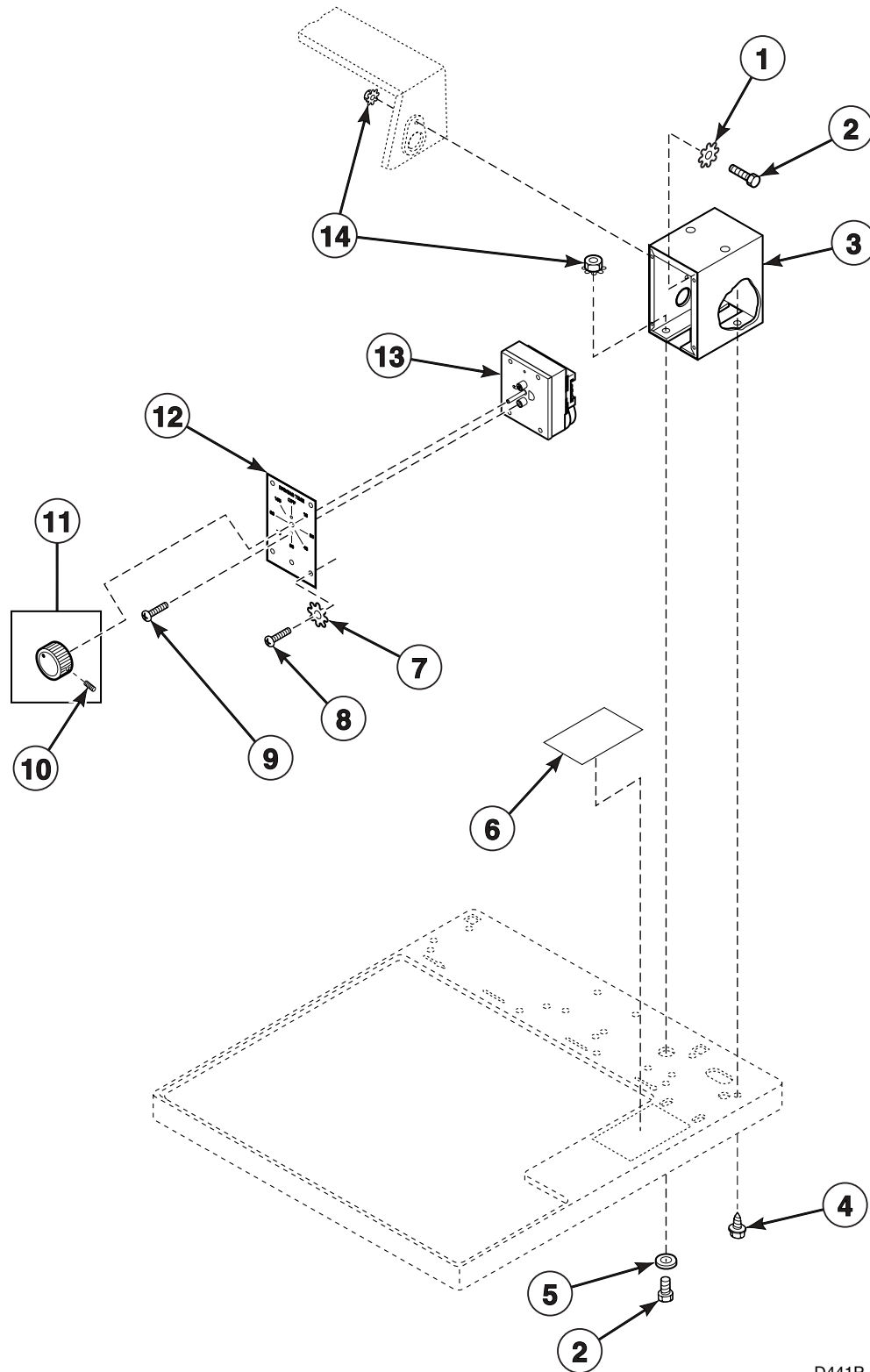
Information in this manual is applicable to these dryer models:

HDE007*A1702	HDE107*C3000	HDE707*C1702	HDG509*A1102	SDE107*B3018
HDE007*A3000	HDE507*A1502	HDG009*A1102	HDG509*C1102	SDE407*A3000
HDE007*B3003	HDE507*A1702	HDG009*A3000	HDG609*A1102	SDE407*A4350
HDE007*B3008	HDE507*C1502	HDG009*A3008	HDG709*A1102	SDG009*A3000
HDE007*B3010	HDE507*C1702	HDG009*B3008	HDG709*C1102	SDG009*A3058
HDE007*C1702	HDE607*A1502	HDG009*C1102	SDE007*A3000	SDG109*A1124
HDE007*C3000	HDE607*A1702	HDG009*C3000	SDE007*A4350	SDG109*A3000
HDE107*A1502	HDE607*C1502	HDG109*A1102	SDE007*B3018	SDG109*A3058
HDE107*A1702	HDE607*C1702	HDG109*A3000	SDE107*A1724	SDG109*A5412
HDE107*A3000	HDE707*A1502	HDG109*B3013	SDE107*A3000	SDG109*B3013
HDE107*B3018	HDE707*A1702	HDG109*C1102	SDE107*A4350	SDG409*A3000
HDE107*C1502	HDE707*C1502	HDG109*C3000	SDE107*A5412	SDG409*A3058
HDE107*C1702				

* Add Letter To Designate Color. L - Almond W - White

Timer, Plate, Case and Knob - Nonmetered Models

Models HDE007*A1702, HDE007*A3000, HDE007*B3003, HDE007*B3008, HDE007*B3010, HDE007*C1702, HDE007*C3000, HDG009*A1102, HDG009*A3000, HDG009*A3008, HDG009*B3008, HDG009*C1102, HDG009*C3000, SDE007*A3000, SDE007*A4350, SDE007*B3018, SDG009*A3000 and SDG009*A3058



D441P_505026

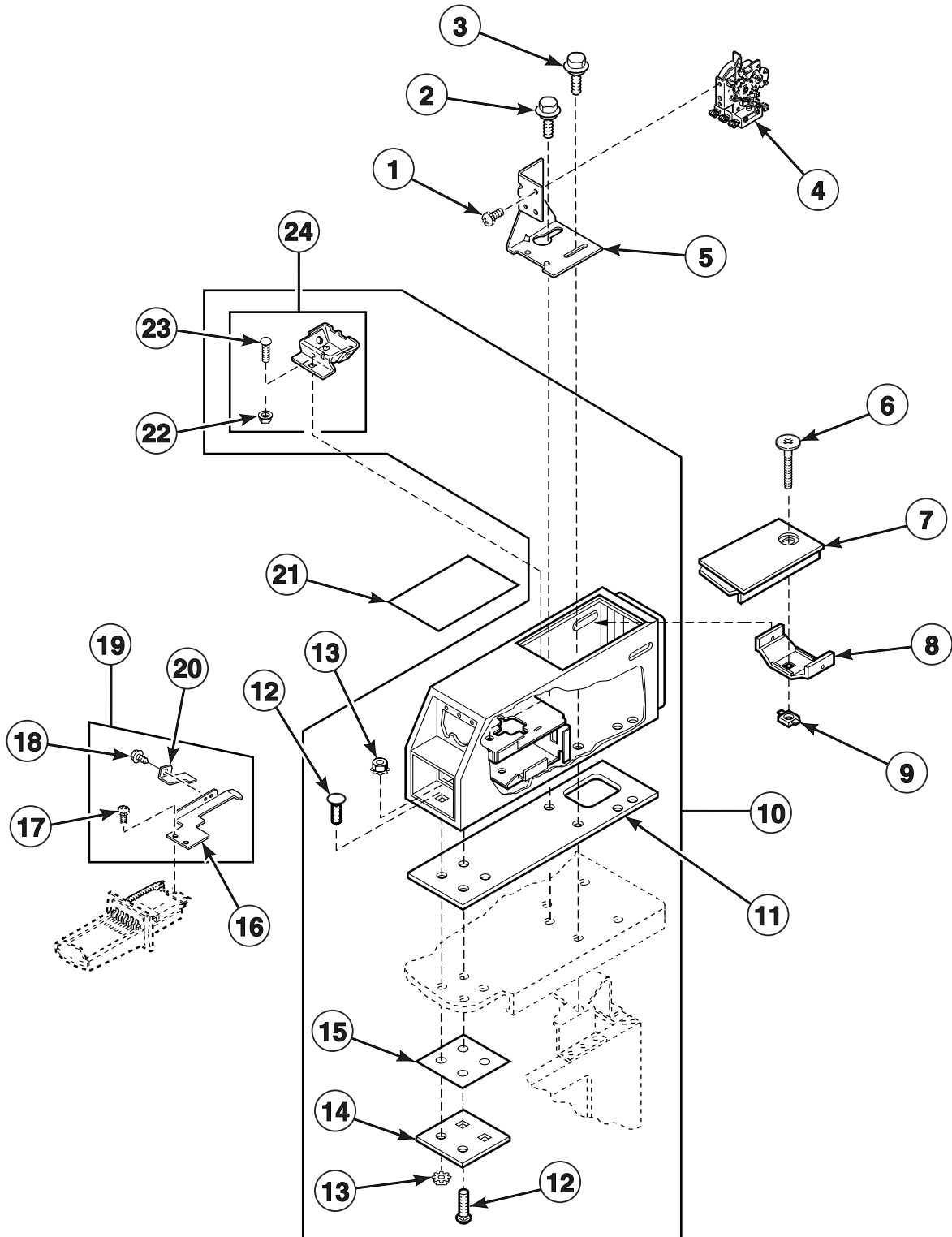
SDE1 P1



Copyright, Alliance Laundry Systems LLC – DO NOT COPY or

Service Door and Meter Case - Coin Slide Models

Models HDE107*A1502, HDE107*A1702, HDE107*A3000, HDE107*B3018, HDE107*C1502, HDE107*C1702, HDE107*C3000, HDG109*A1102, HDG109*A3000, HDG109*B3013, HDG109*C1102, HDG109*C3000, SDE107*A1724, SDE107*A3000, SDE107*A4350, SDE107*A5412, SDE107*B3018, SDG109*A1124, SDG109*A3000, SDG109*A3058, SDG109*A5412 and SDG109*B3013

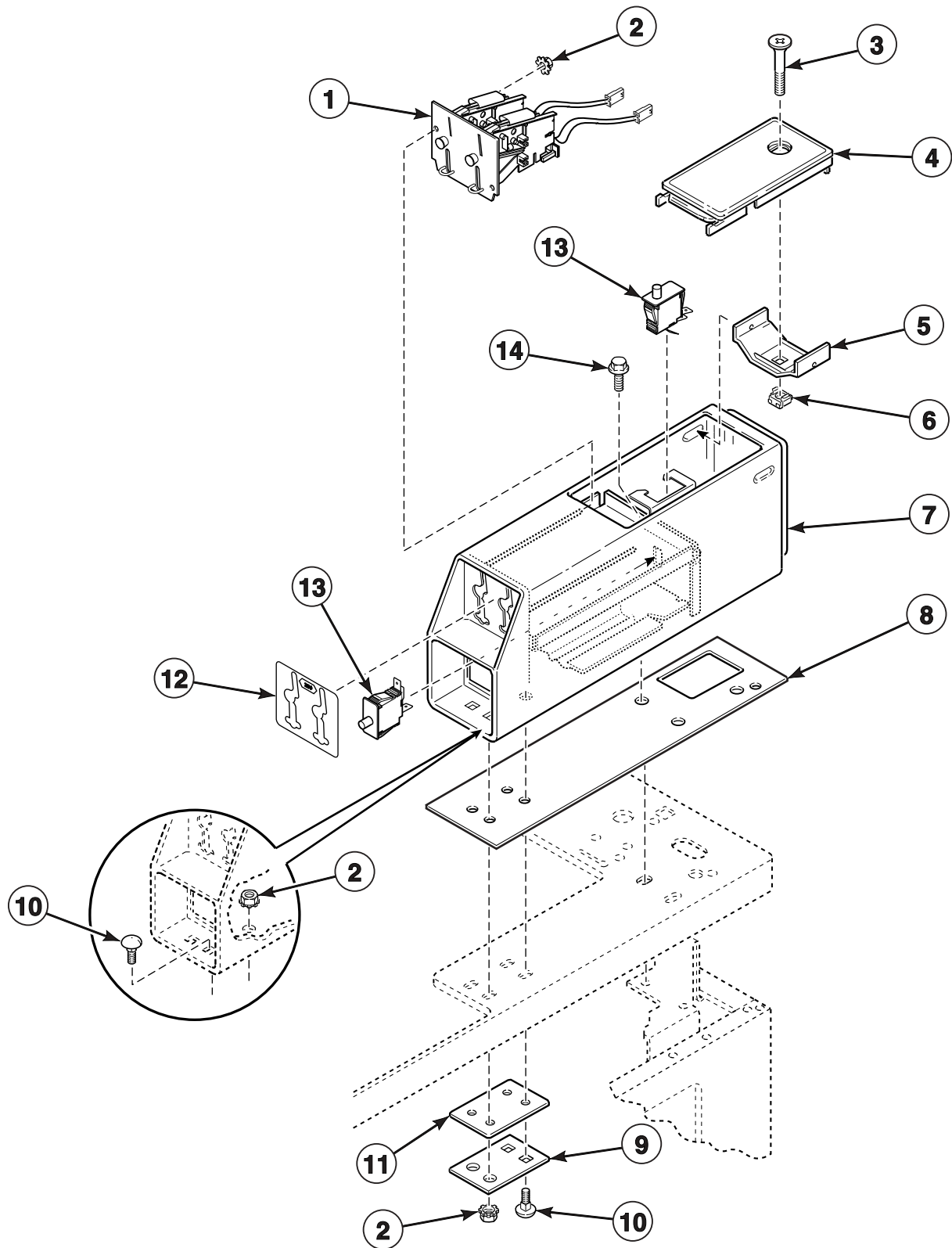


D336P_505026

SDE1 P2

Service Door and Meter Case - Coin Drop Models

Models HDE507*A1502, HDE507*A1702, HDE507*C1502, HDE507*C1702, HDG509*A1102, HDG509*C1102, SDE407*A3000, SDE407*A4350, SDG409*A3000 and SDG409*A3058

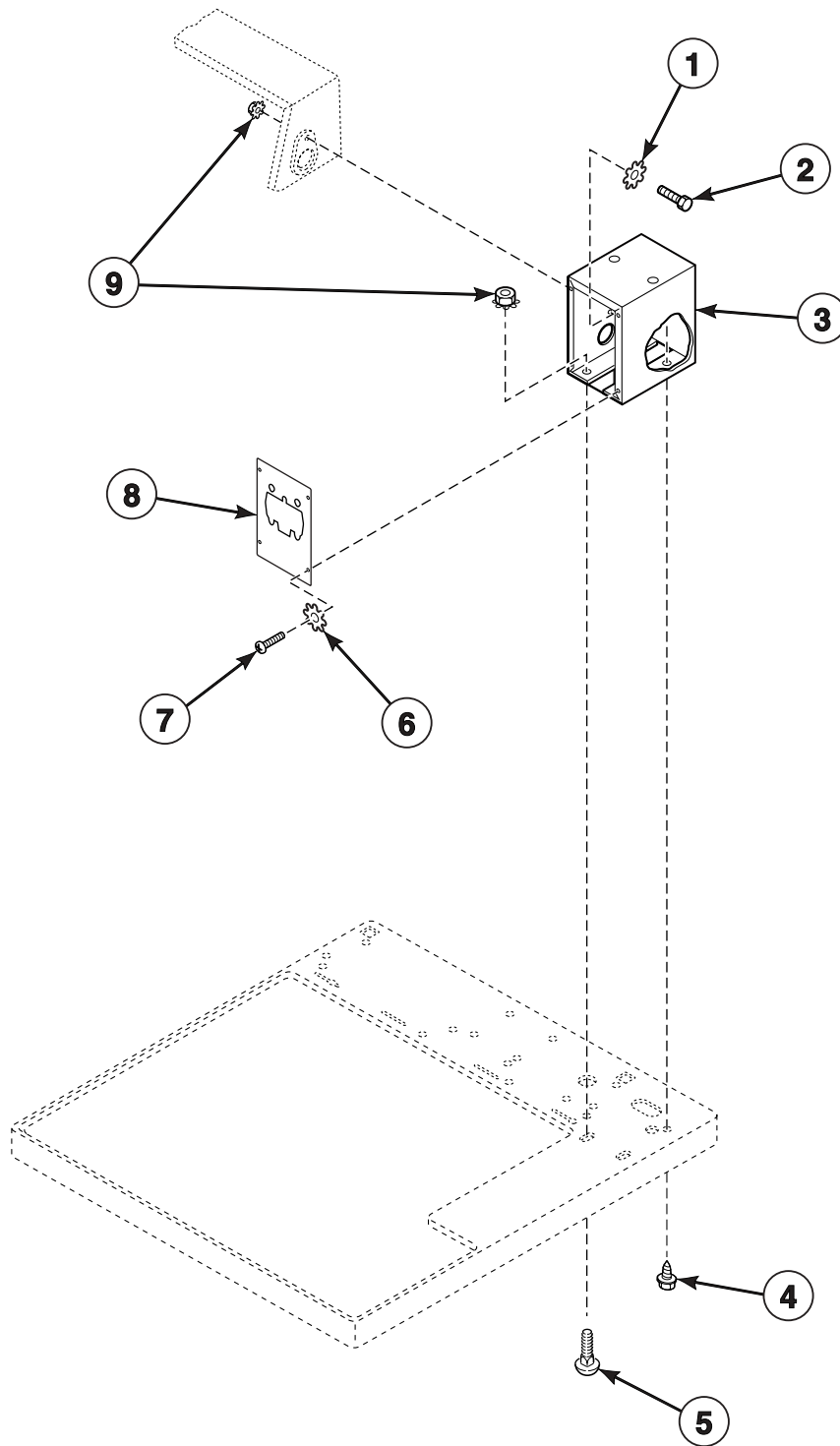


D277P_505026

SDE1 P3

Timer, Plate and Case - Prep for Card Reader Models

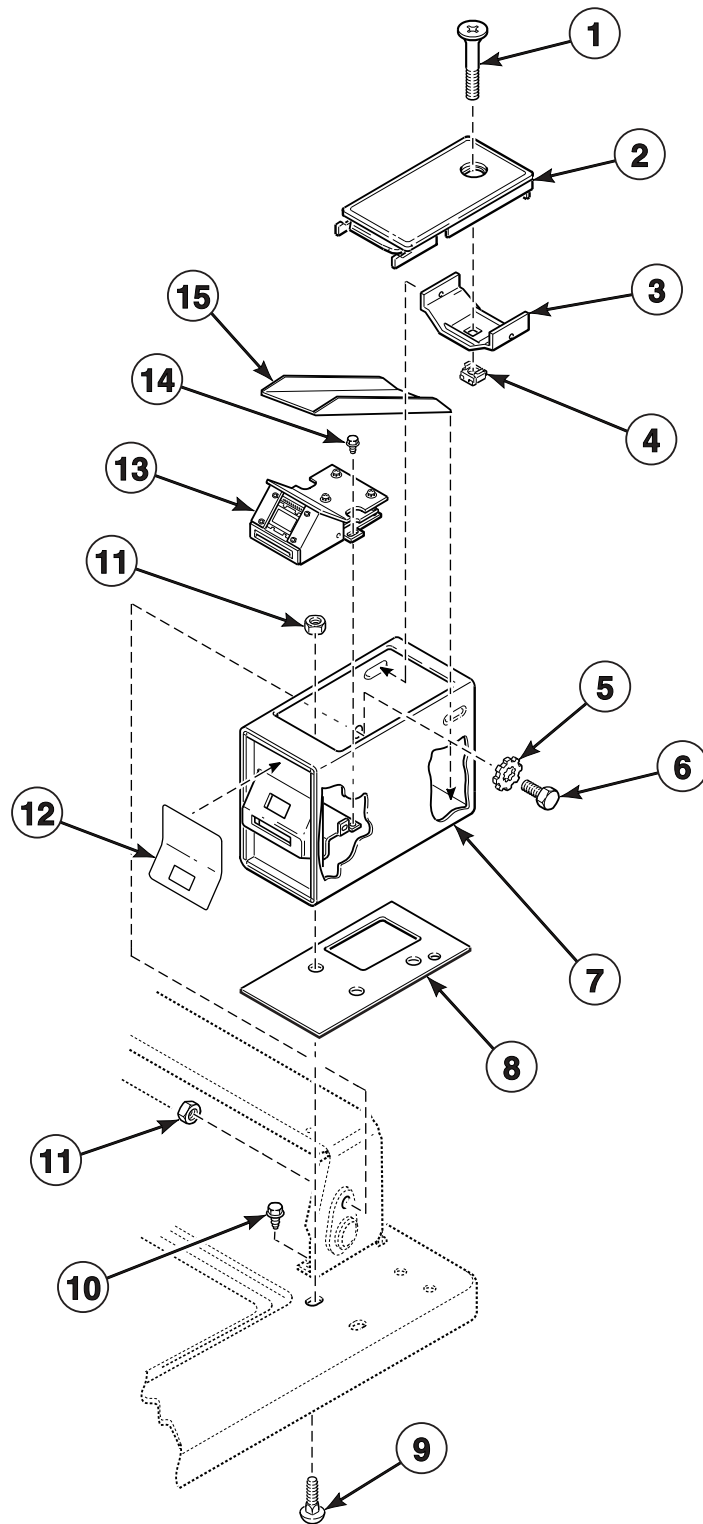
Models HDE607*A1502, HDE607*A1702, HDE607*C1502, HDE607*C1702 and HDG609*A1102



D348P_505026

Security Case and Card Reader

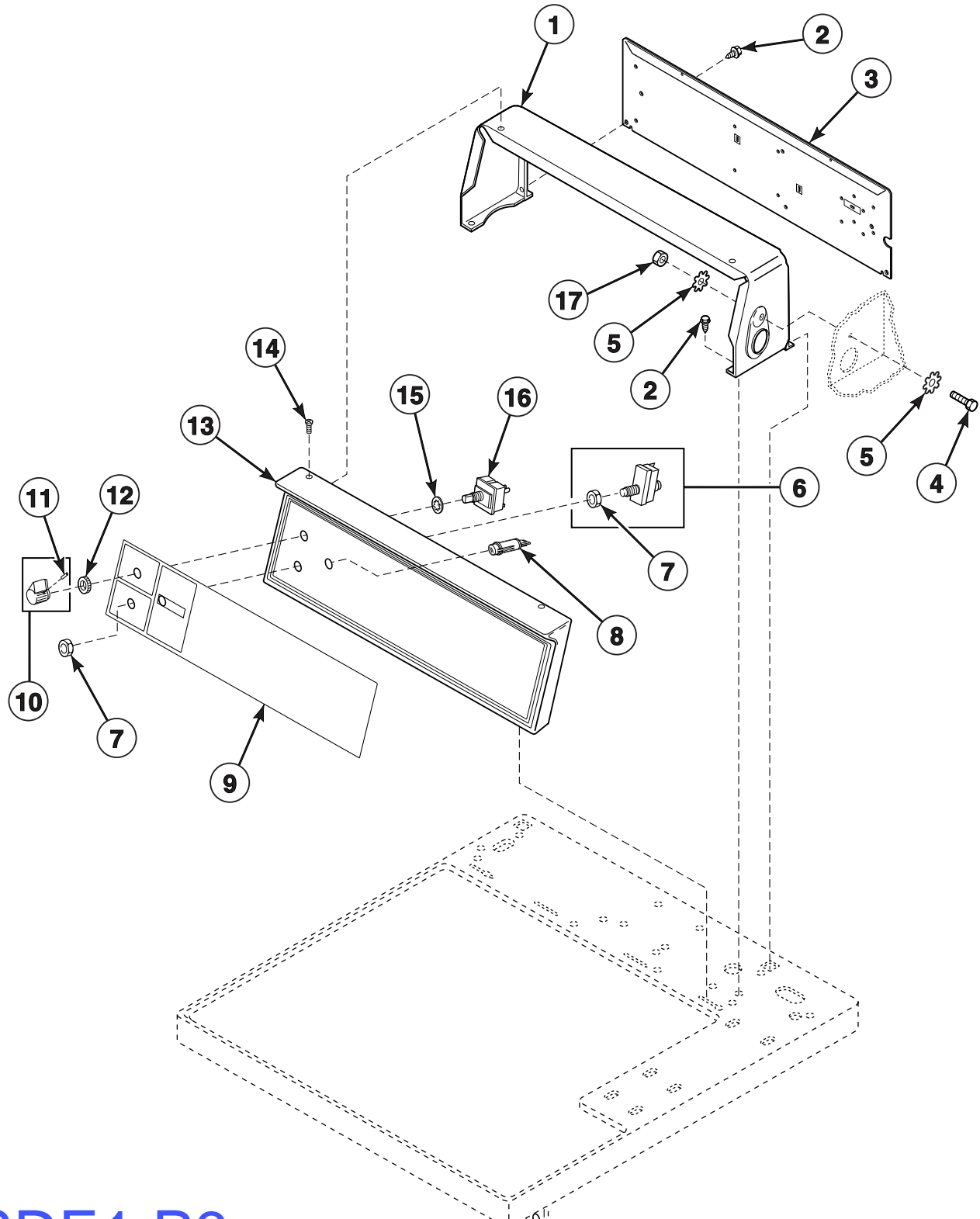
Models HDE707*A1502, HDE707*A1702, HDE707*C1502, HDE707*C1702, HDG709*A1102 and HDG709*C1102



D349PZ3B_505026

Control Panel, Control Hood and Controls - Electromechanical Control Models

Models HDE007*A1702, HDE007*A3000, HDE007*B3003, HDE007*B3008, HDE007*B3010, HDE007*C1702, HDE007*C3000, HDE107*A1502, HDE107*A1702, HDE107*A3000, HDE107*B3018, HDE107*C1502, HDE107*C1702, HDE107*C3000, HDG009*A1102, HDG009*A3000, HDG009*A3008, HDG009*B3008, HDG009*C1102, HDG009*C3000, HDG109*A1102, HDG109*A3000, HDG109*B3013, HDG109*C1102, HDG109*C3000, SDE007*A3000, SDE007*A4350, SDE007*B3018, SDE107*A1724, SDE107*A3000, SDE107*A4350, SDE107*A5412, SDE107*B3018, SDG009*A3000, SDG009*A3058, SDG109*A1124, SDG109*A3000, SDG109*A3058, SDG109*A5412 and SDG109*B3013



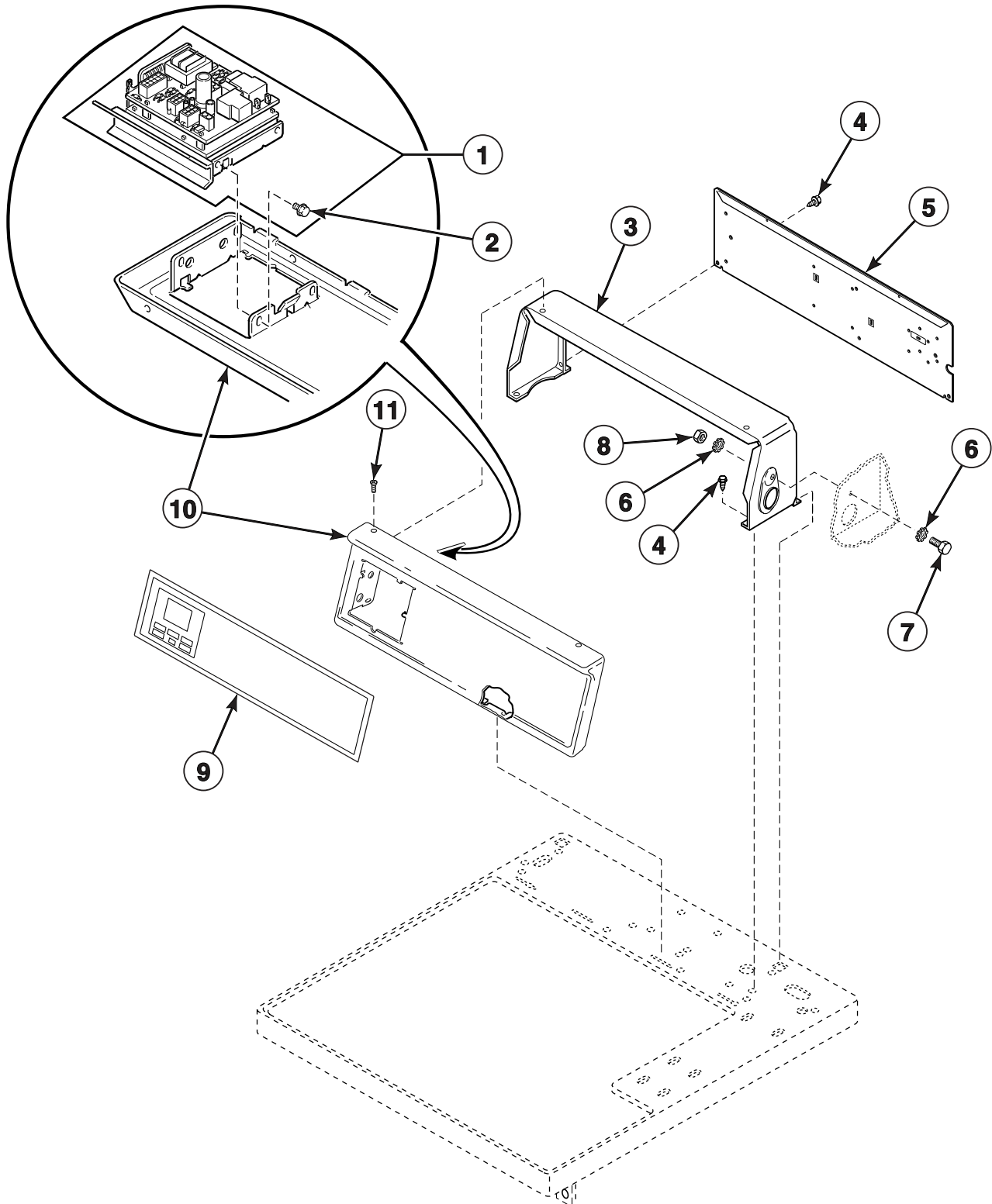
SDE1 P6

D439P_505026

© Copyright, Alliance Laundry Systems LLC – DO NOT COPY or TRANSMIT

Control Panel, Control Hood and Controls - Electronic Control Models

Models HDE507*A1502, HDE507*A1702, HDE507*C1502, HDE507*C1702, HDE607*A1502, HDE607*A1702, HDE607*C1502, HDE607*C1702, HDE707*A1502, HDE707*A1702, HDE707*C1502, HDE707*C1702, HDG509*A1102, HDG509*C1102, HDG609*A1102, HDG709*A1102, HDG709*C1102, SDE407*A3000, SDE407*A4350, SDG409*A3000 and SDG409*A3058

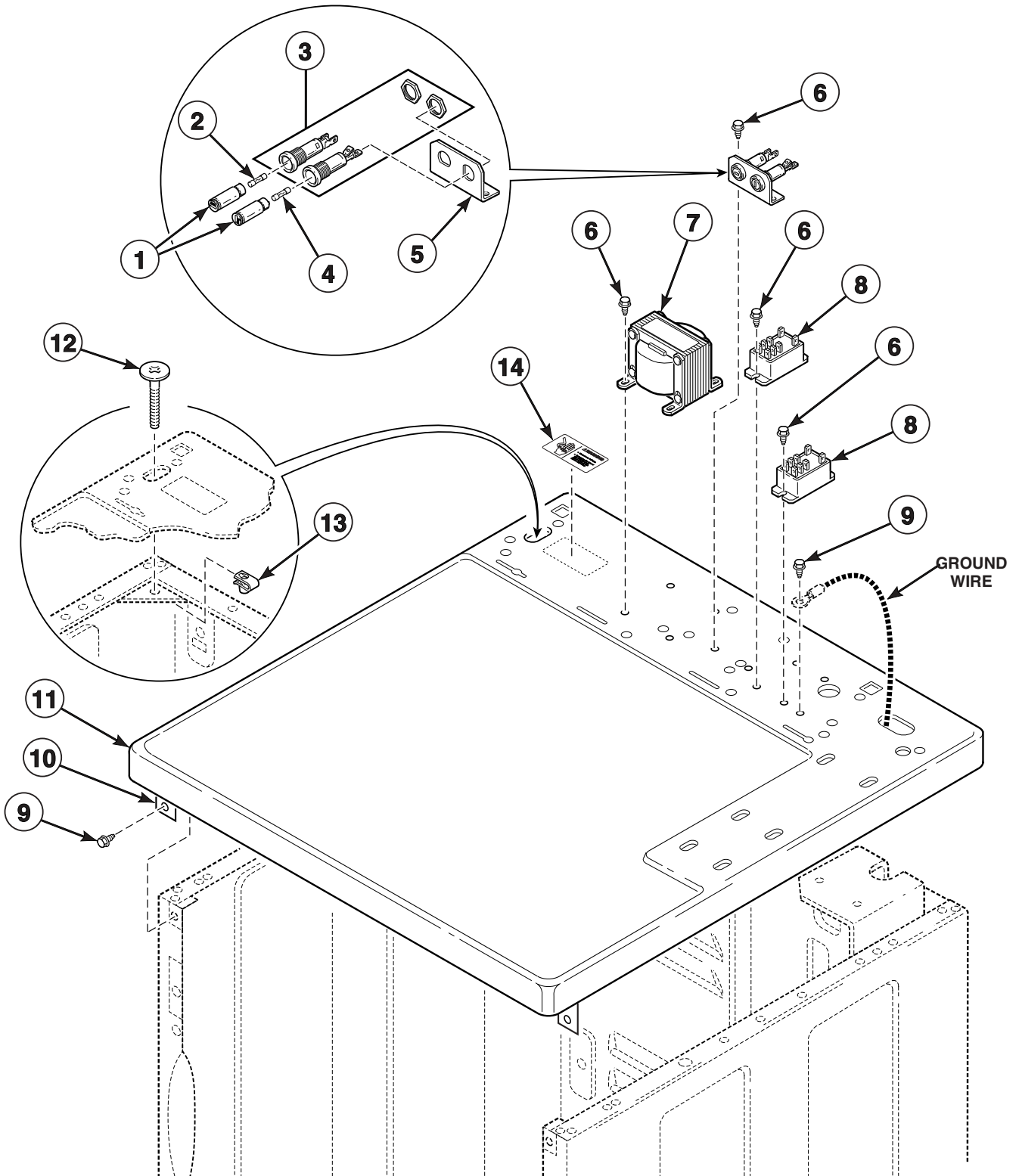


SDE1 P7

D440P_505026

© Copyright, Alliance Laundry Systems LLC – DO NOT COPY or TRANSMIT

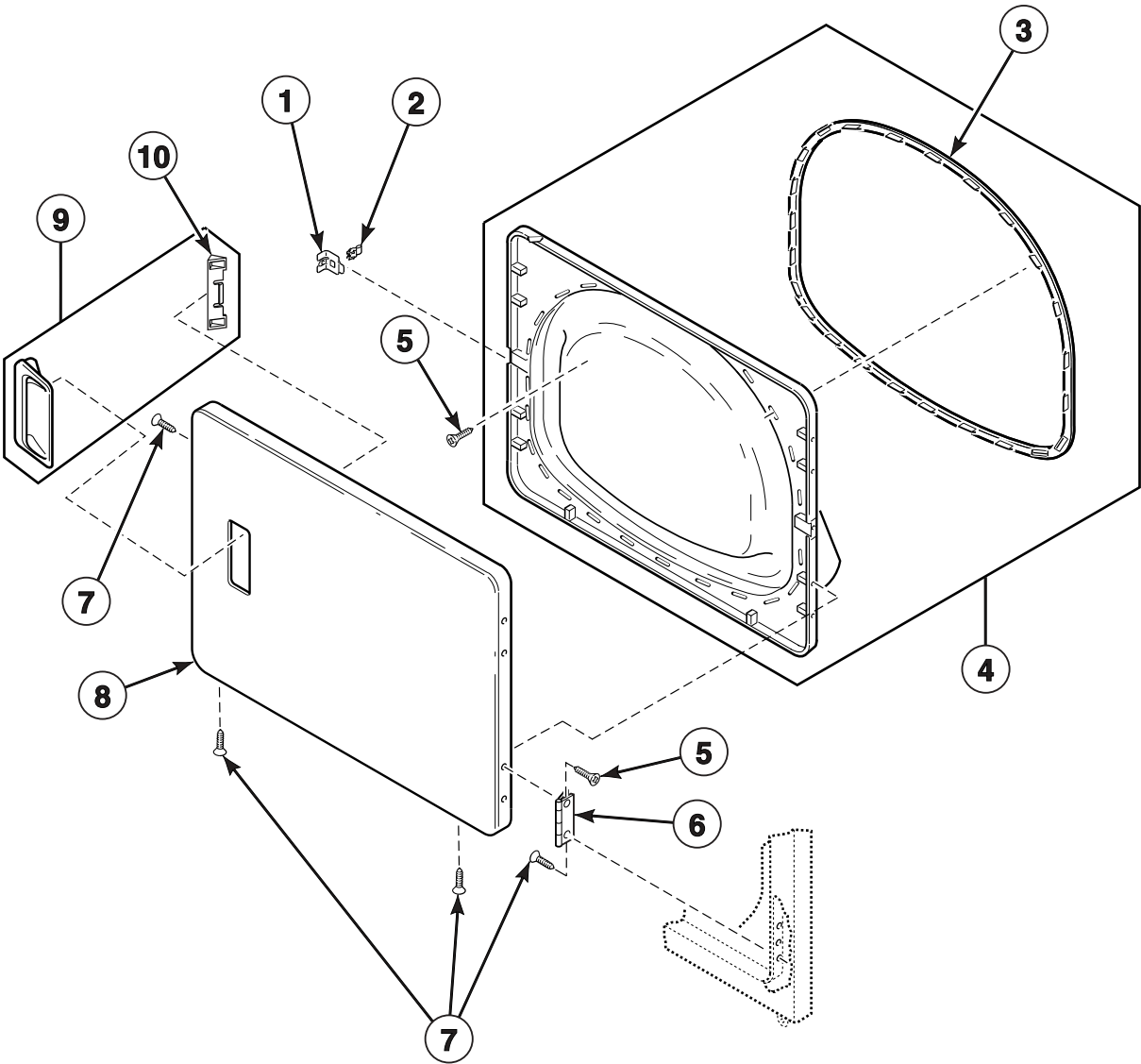
Cabinet Top



D339P_505026

SDE1 P8

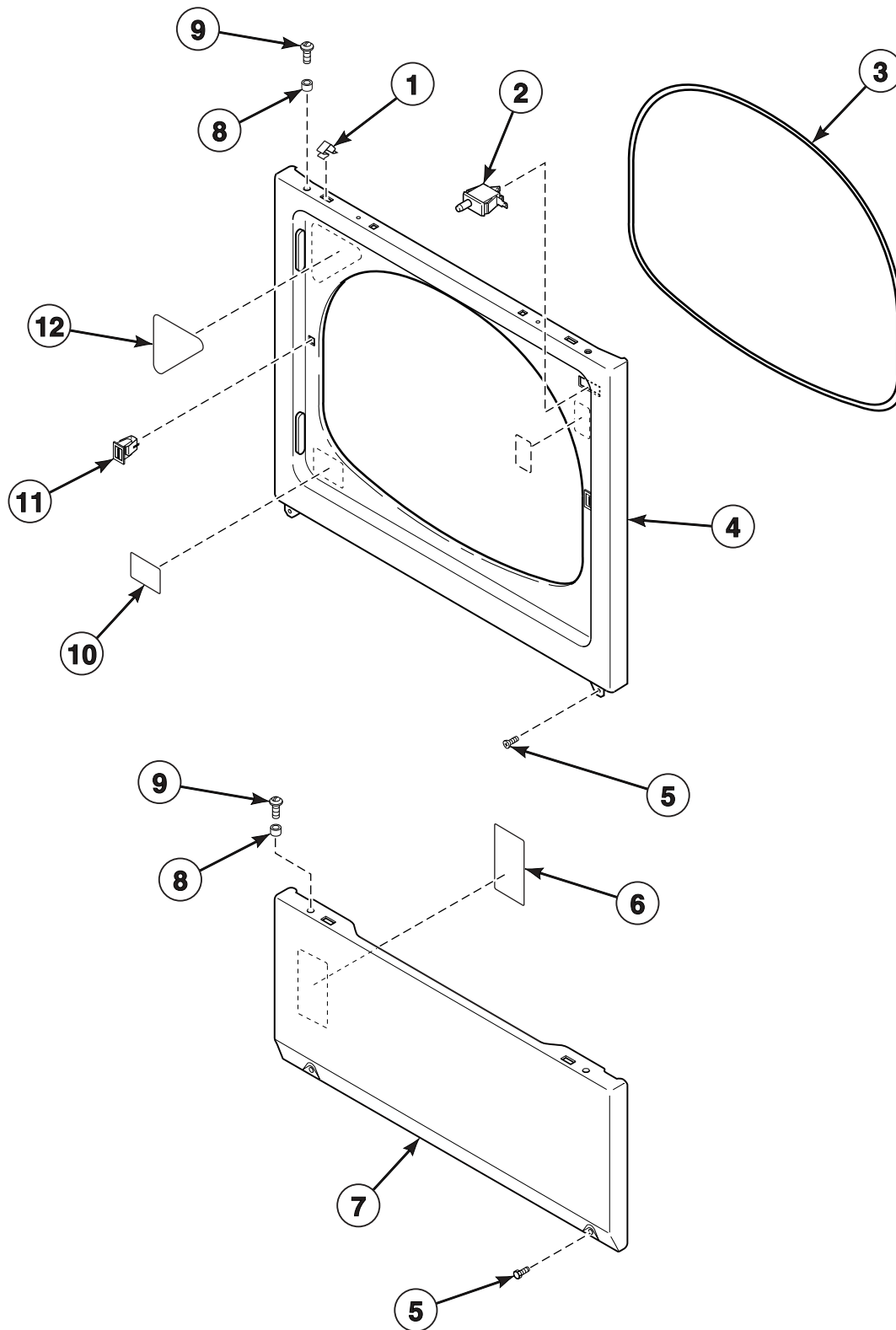
Loading Door



DRY1737P_505026

SDE1 P9

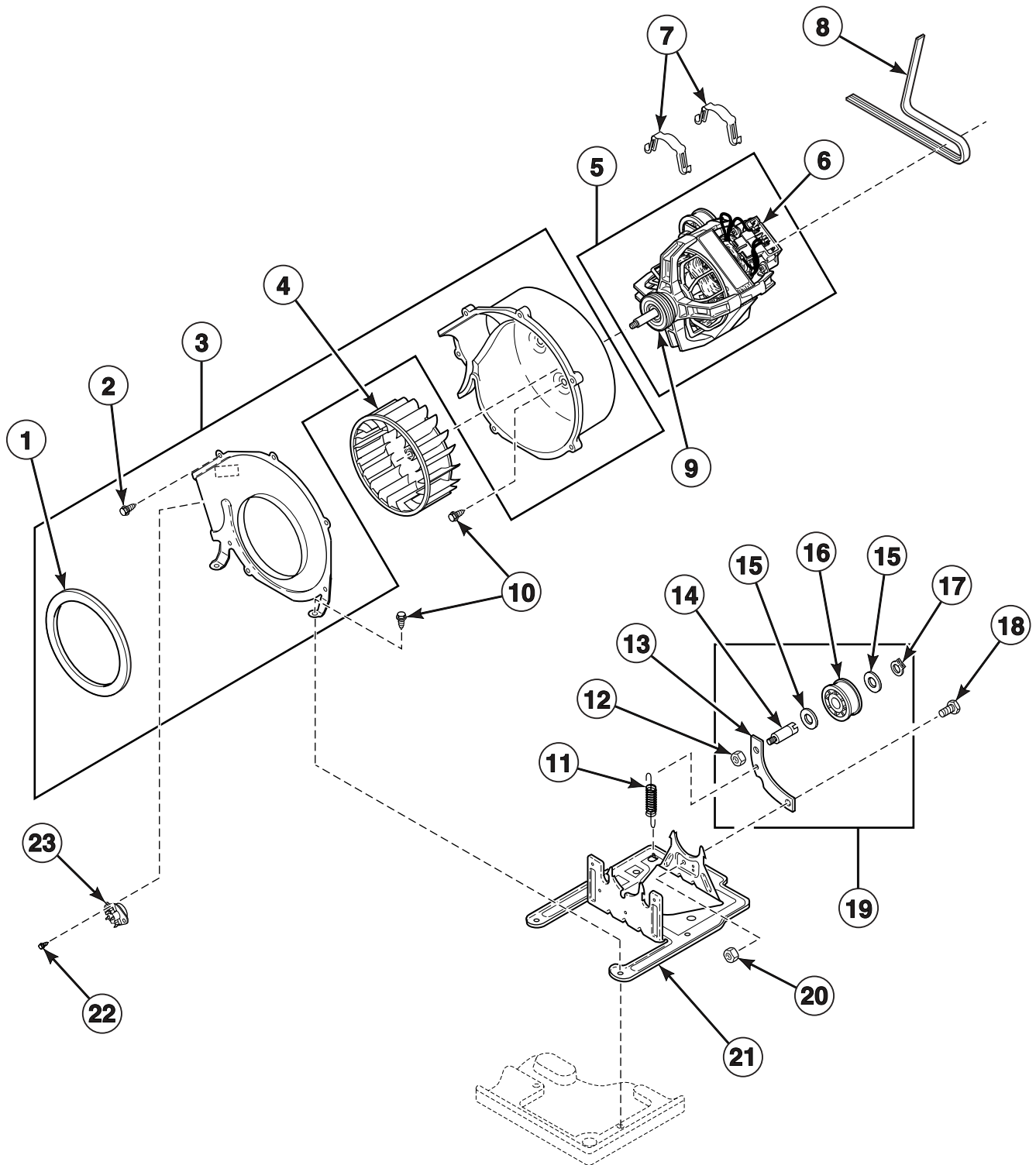
Lower Access Panel, Front Panel and Seal



D313P_505026

SDE1 P10

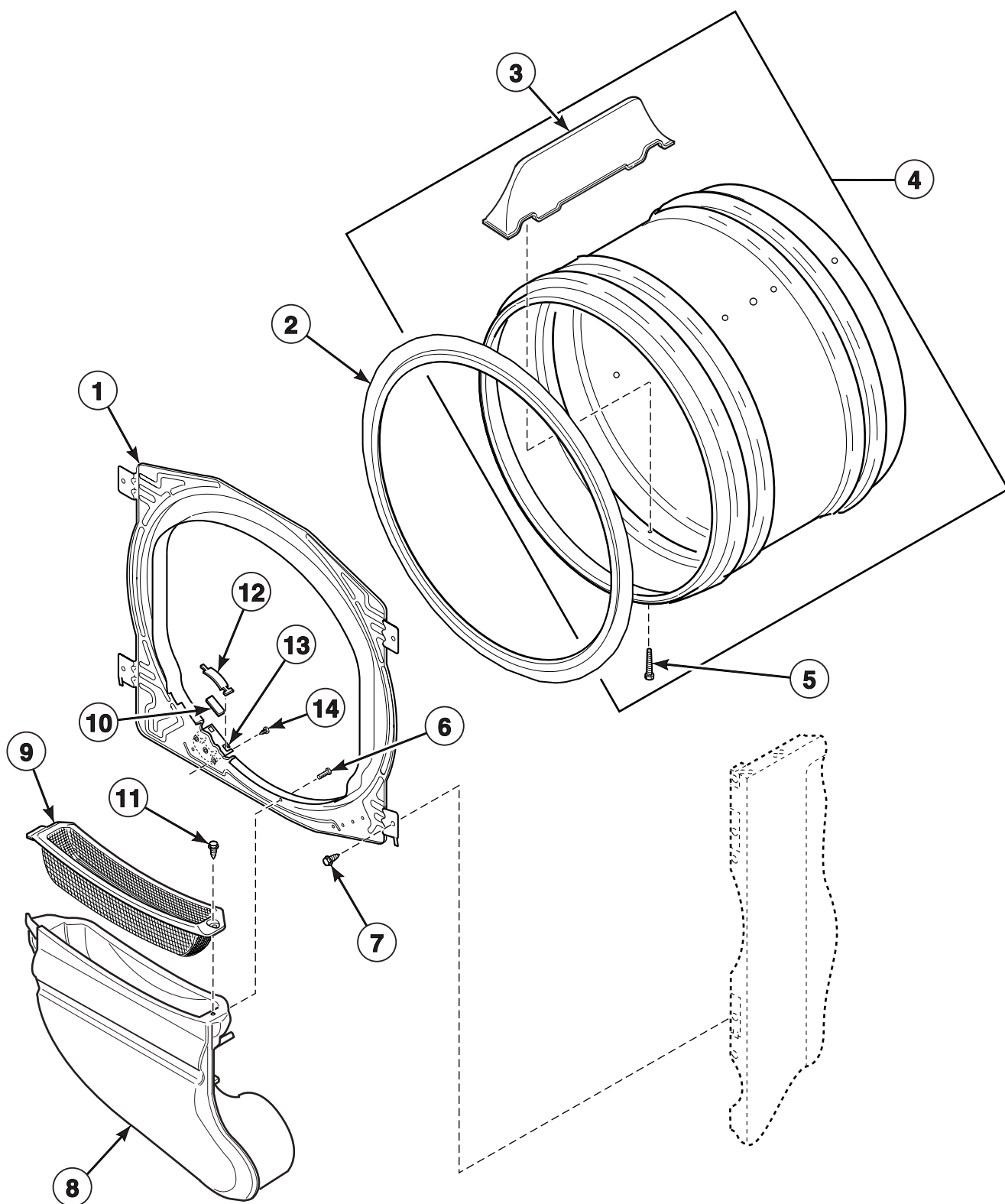
Motor, Exhaust Fan and Belt



D401PE3A_505026

SDE1 P11

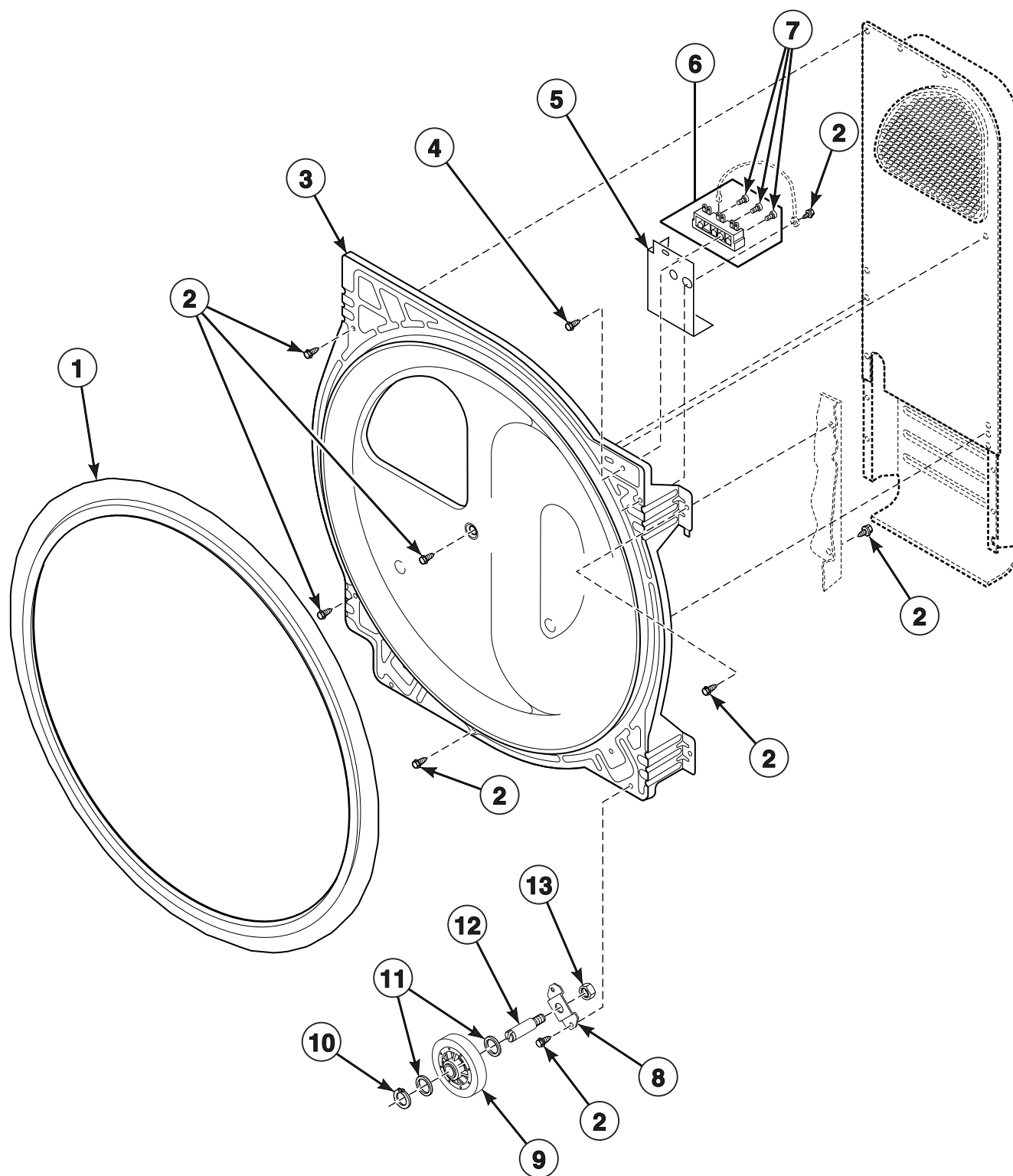
Front Bulkhead, Air Duct, Felt Seal and Cylinder



D442P_505026

SDE1 P12

Rear Bulkhead, Felt Seal, Cylinder Roller and Terminal Block

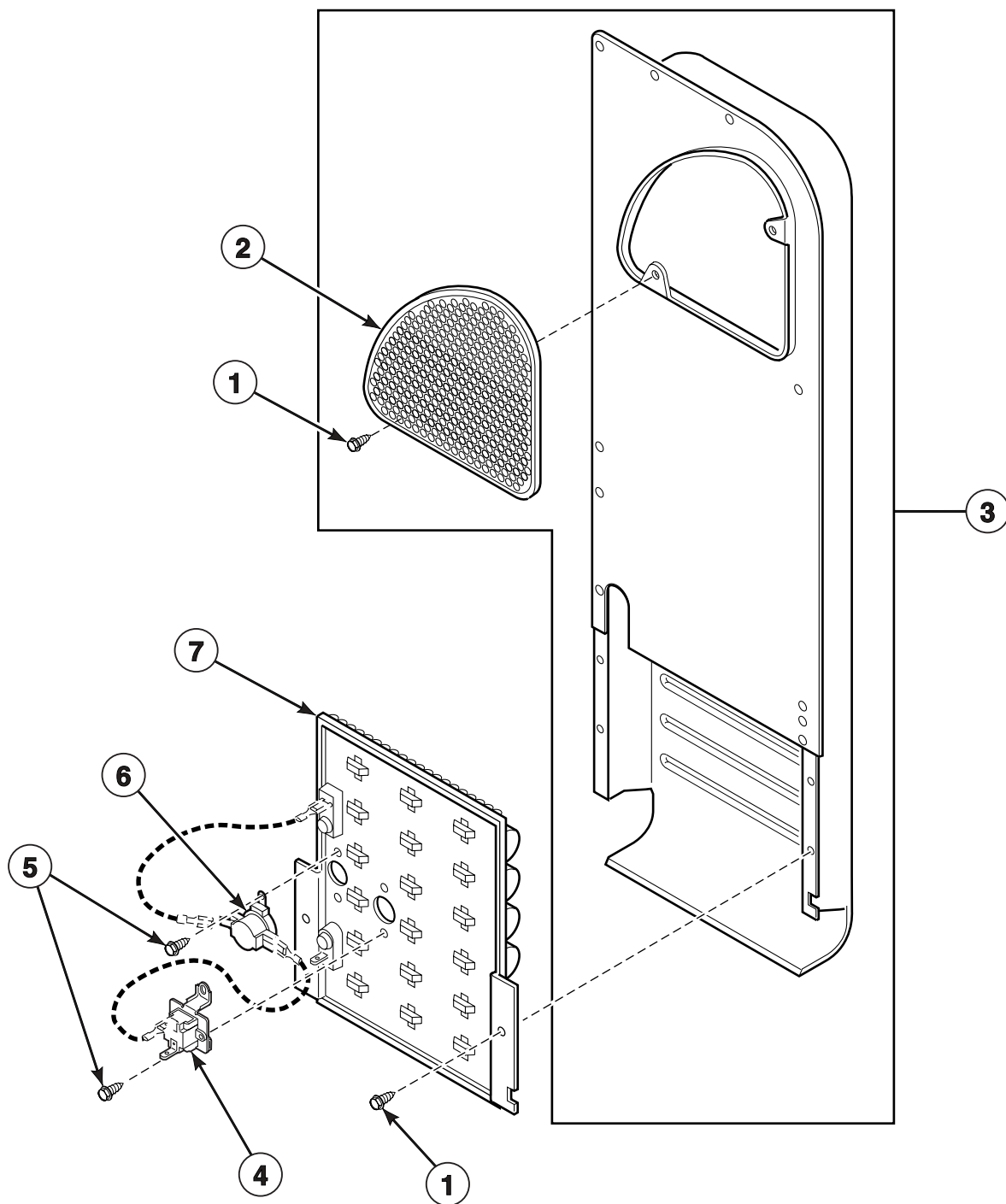


D291P_505026

SDE1 P13

Heater Duct and Element Assembly

Electric Models

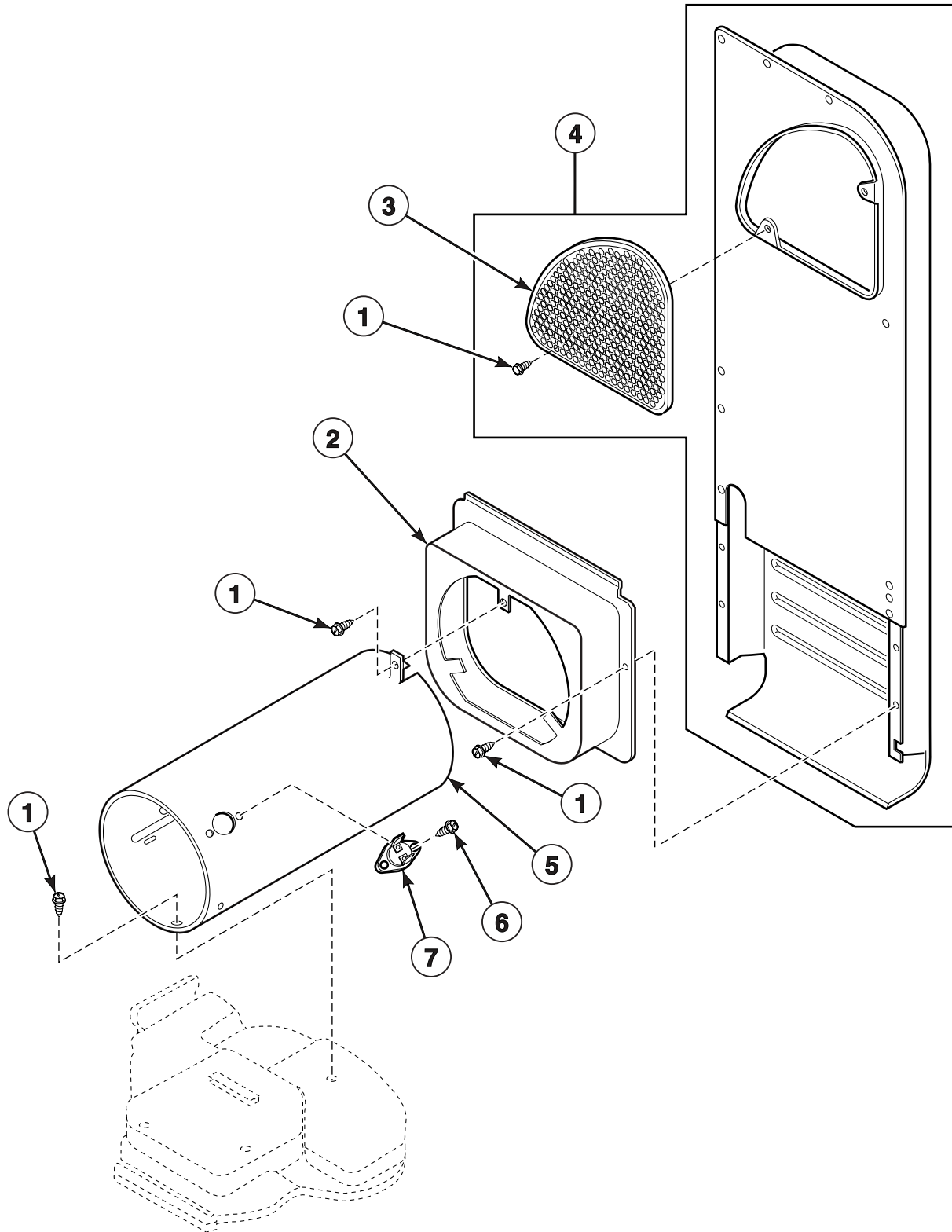


D292P_505026

SDE1 P14

Heater Duct Assembly

Models HDG009*A1102, HDG009*A3000, HDG009*A3008, HDG009*B3008, HDG009*C1102, HDG009*C3000, HDG109*A1102, HDG109*A3000, HDG109*B3013, HDG109*C1102, HDG109*C3000, HDG509*A1102, HDG509*C1102, HDG609*A1102, HDG709*A1102, HDG709*C1102, SDG009*A3000, SDG109*A1124, SDG109*A3000, SDG109*A5412, SDG109*B3013 and SDG409*A3000

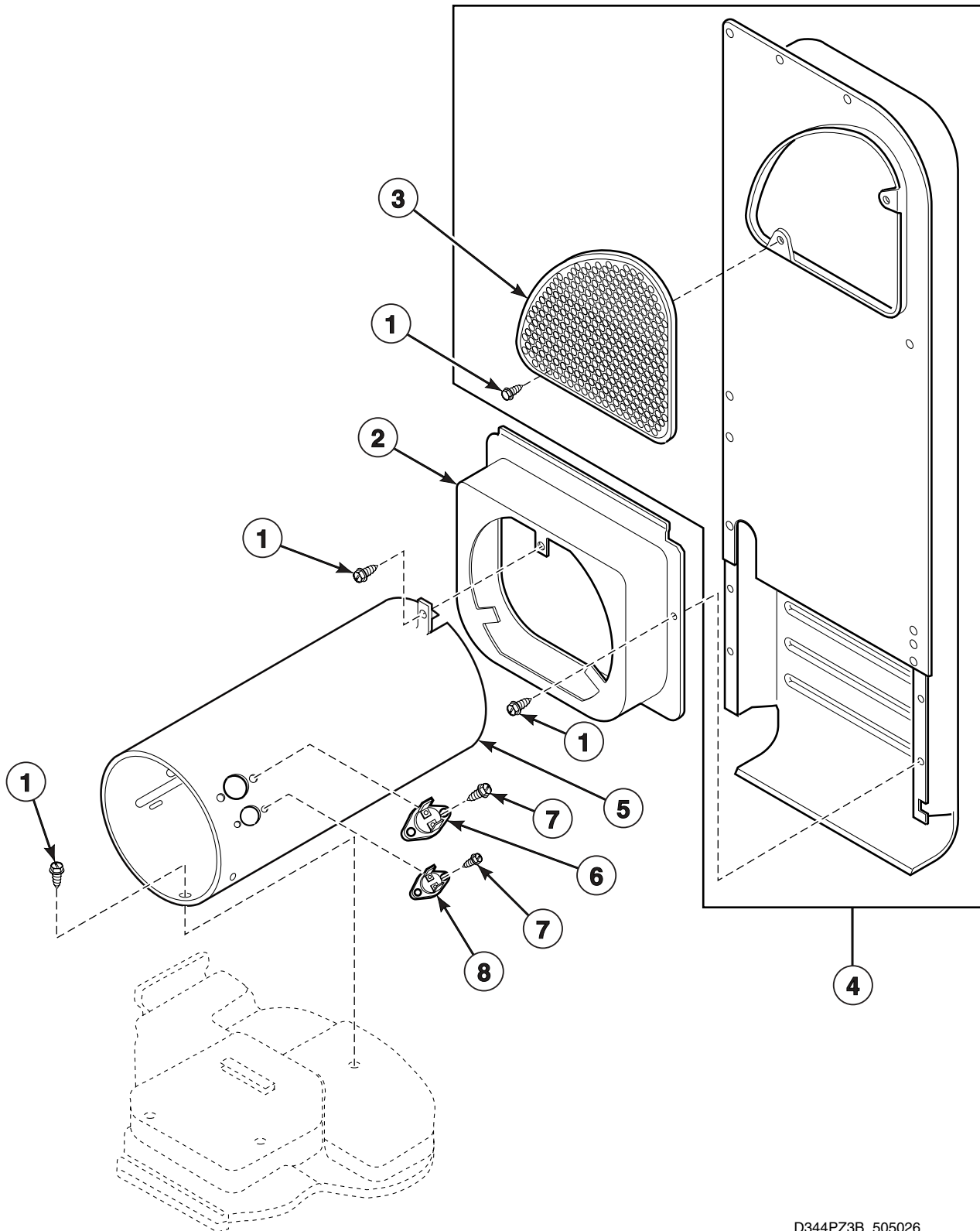


D315P_505026

SDE1 P15

Heater Duct Assembly - Australian Gas Models

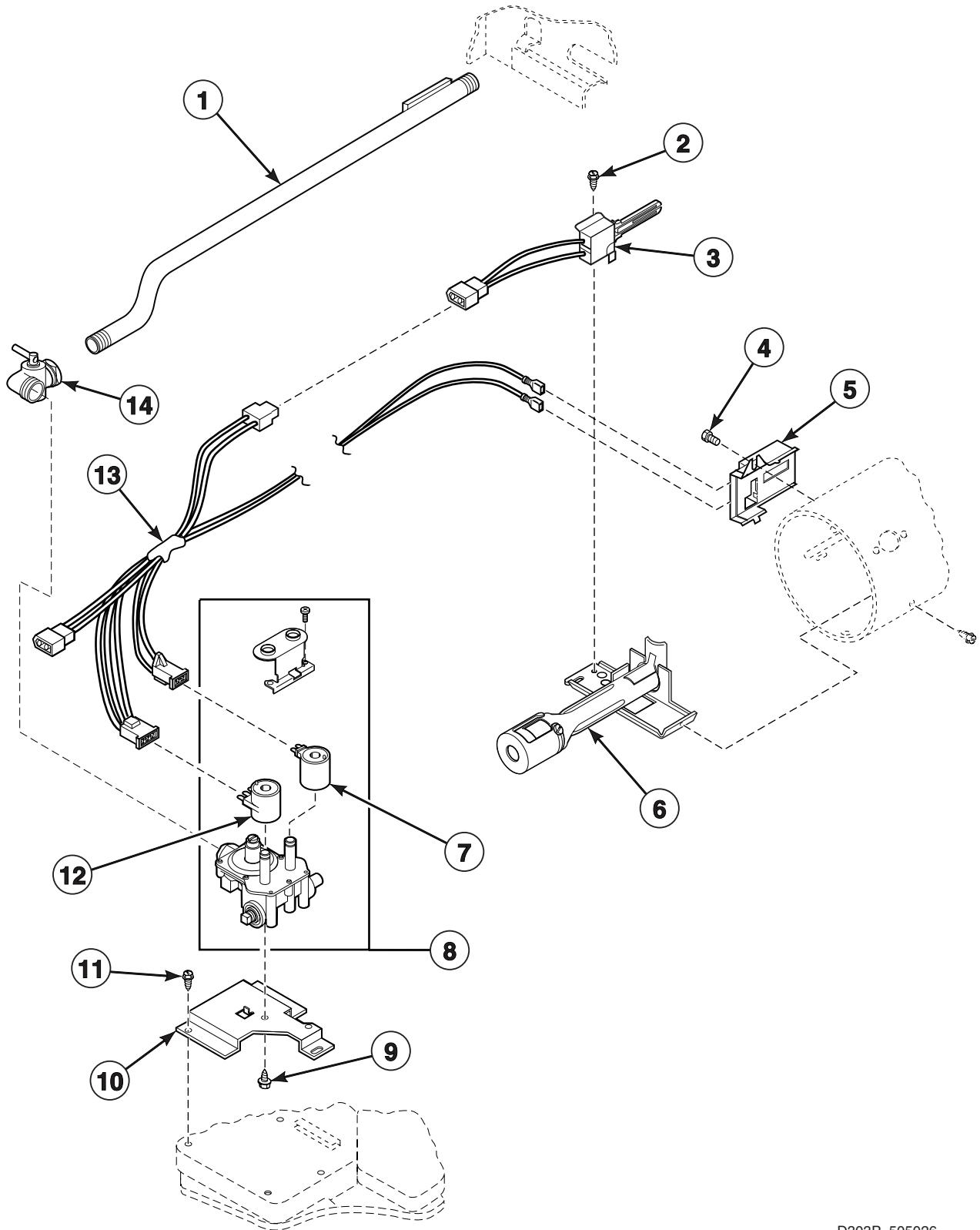
Models SDG009*A3058, SDG109*A3058 and SDG409*A3058



D344PZ3B_505026

Gas Valve, Igniter and Gas Conversion Kits

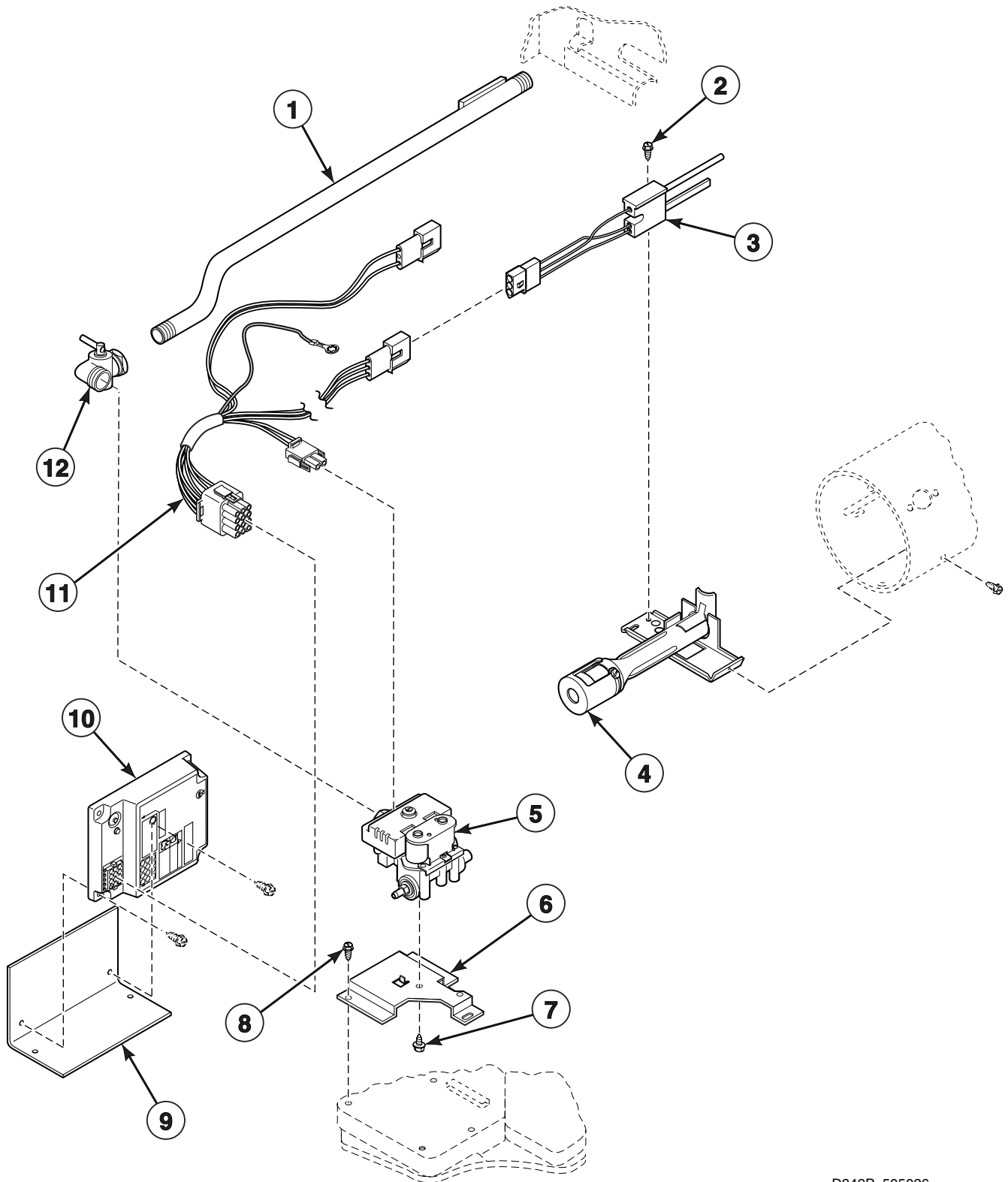
Models HDG009*A1102, HDG009*A3000, HDG009*A3008, HDG009*C1102, HDG009*C3000, HDG109*A1102, HDG109*A3000, HDG109*C1102, HDG109*C3000, HDG509*A1102, HDG509*C1102, HDG609*A1102, HDG709*A1102, HDG709*C1102, SDG009*A3000, SDG109*A1124, SDG109*A3000, SDG109*A5412 and SDG409*A3000



D303P_505026

Gas Valve, Igniter and Gas Conversion Kits - Australian and CE Gas Models

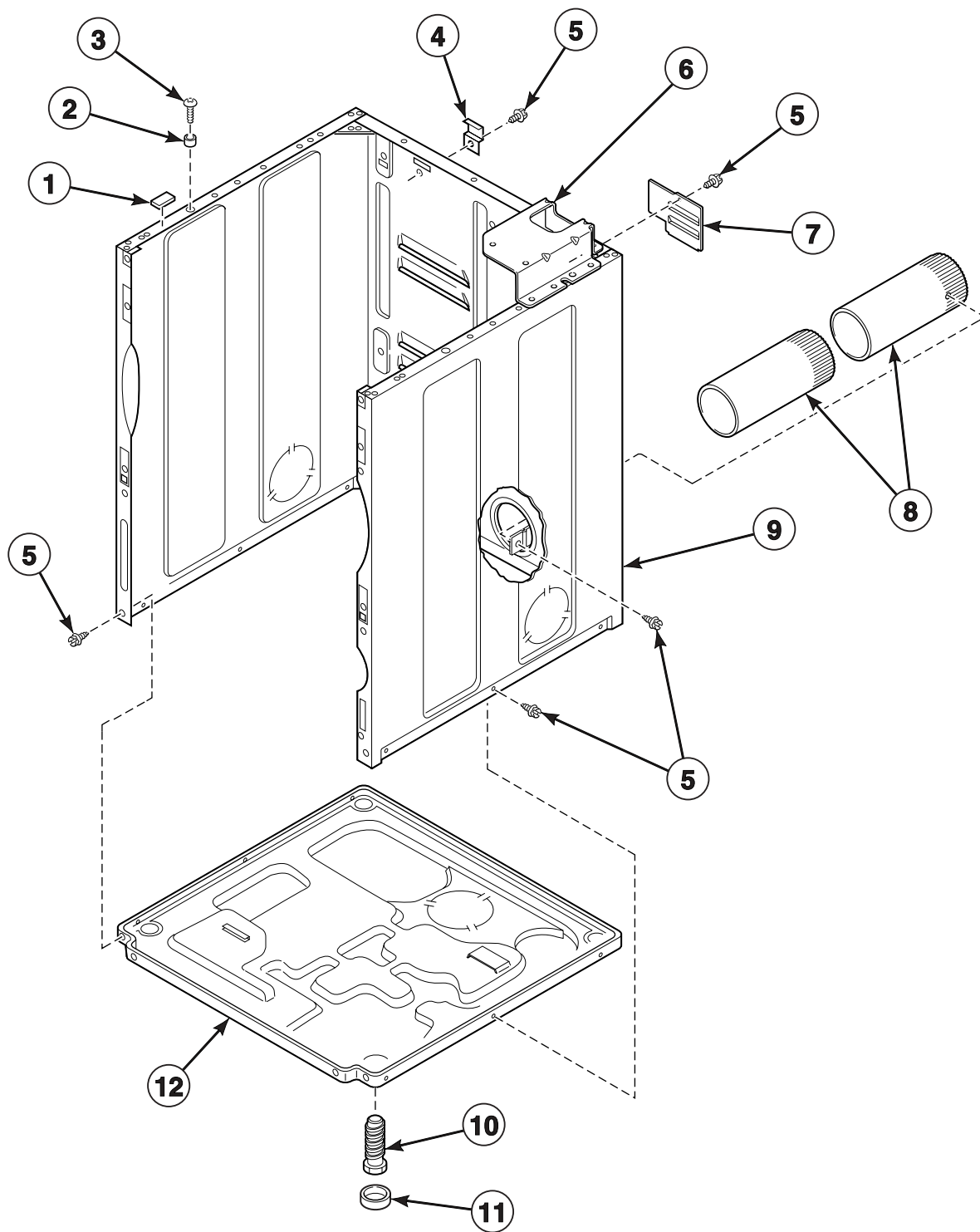
Models HDG009*B3008, HDG109*B3013, SDG009*A3058, SDG109*A3058, SDG109*B3013 and SDG409*A3058



D342P_505026

SDE1 P18

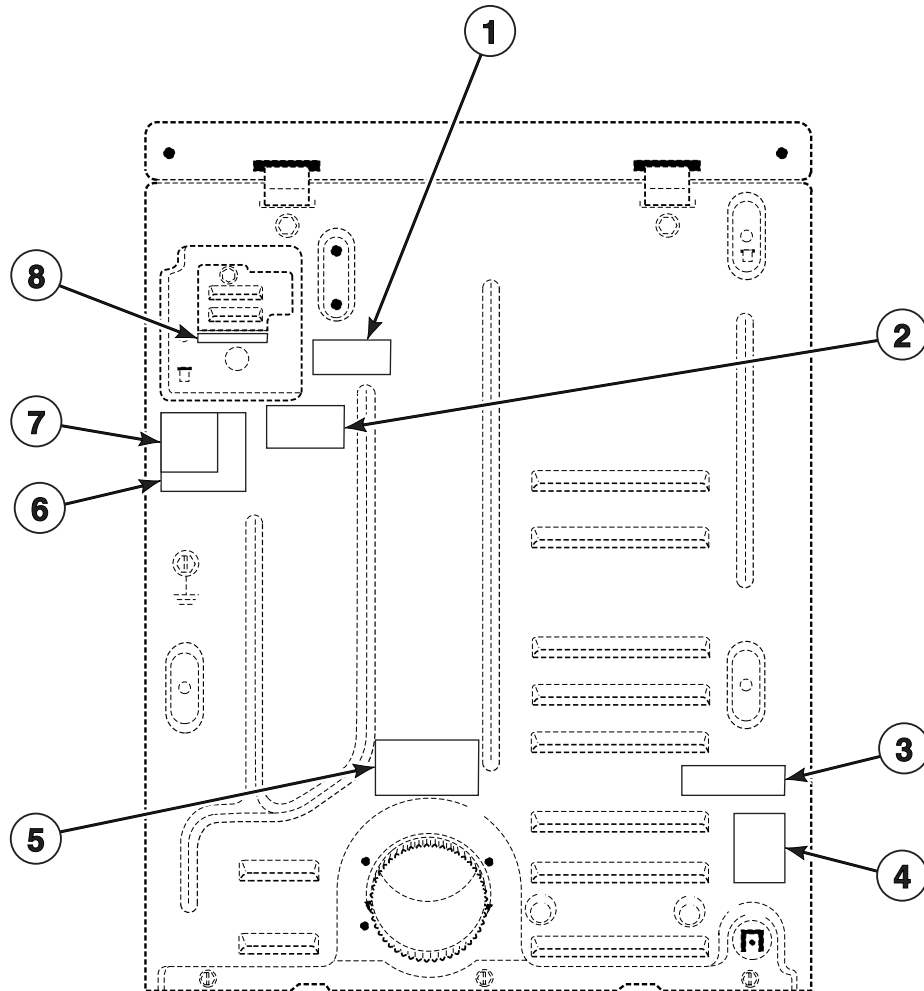
Cabinet, Exhaust Duct and Base



D337PZ3C_505026

SDE1 P19

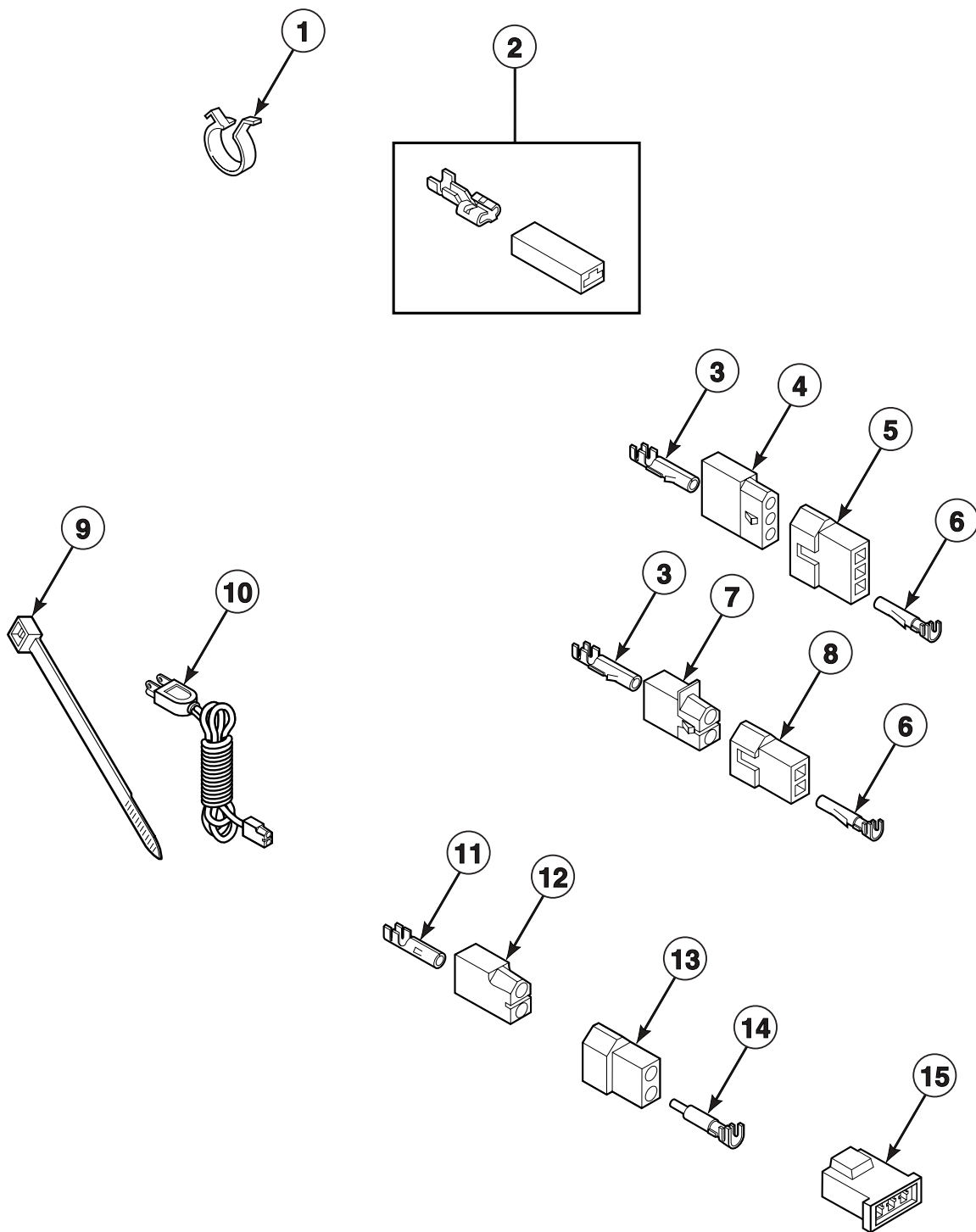
Label Location on Rear of Cabinet



D338PZ3A_505026

SDE1 P20

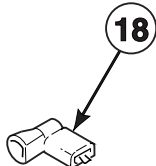
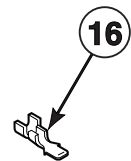
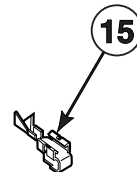
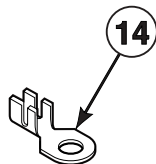
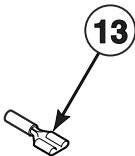
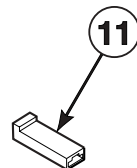
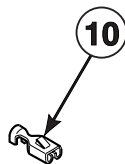
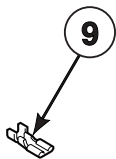
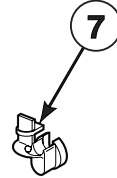
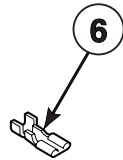
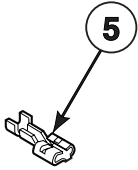
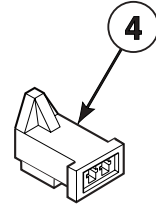
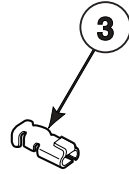
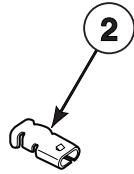
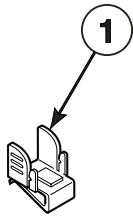
Terminal Block and Terminals



D321P_505026

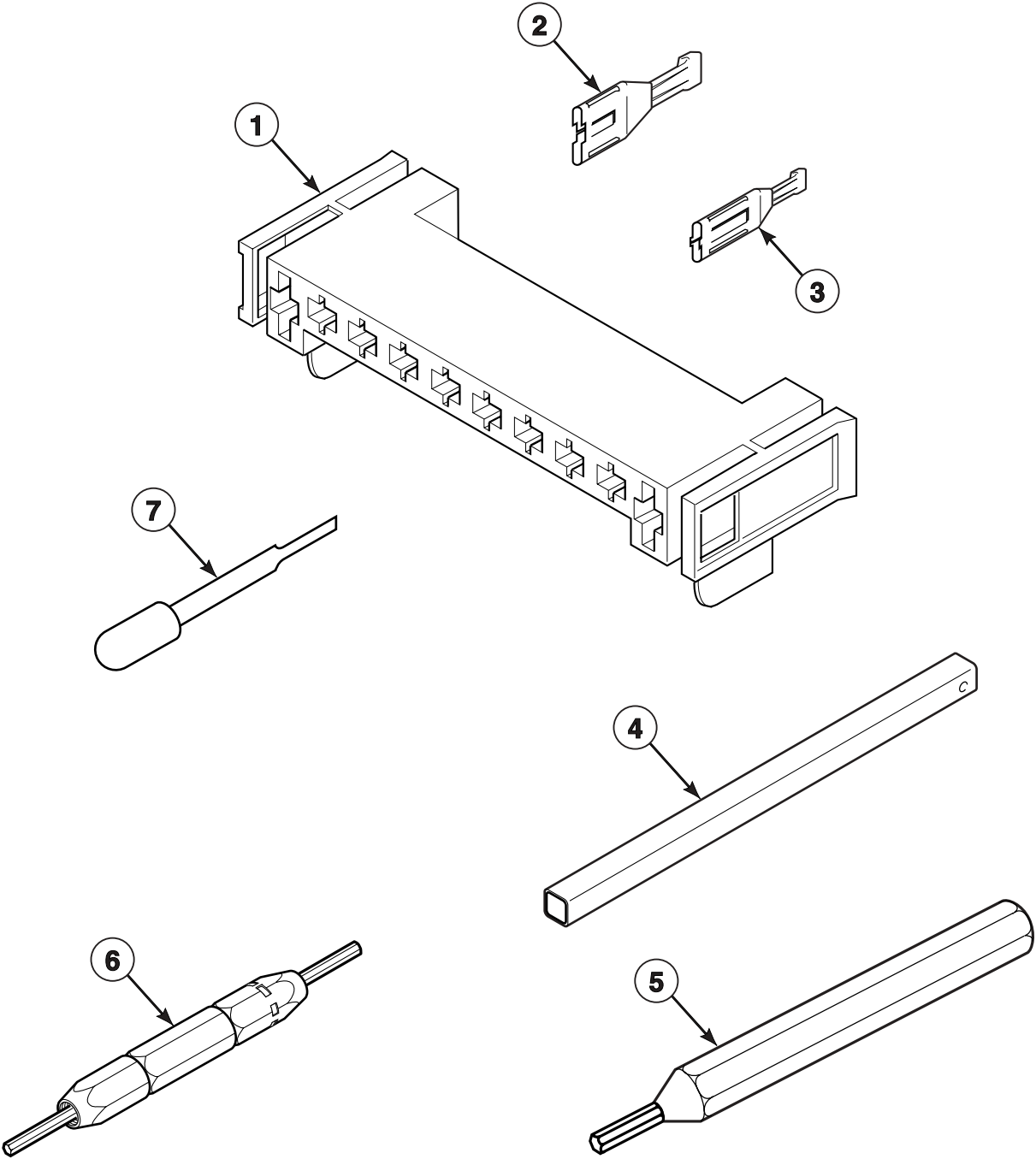
SDE1 P21

Terminals



D322P_505026

Motor Connection Block and Tools



D319P_505026

SDE1 P23