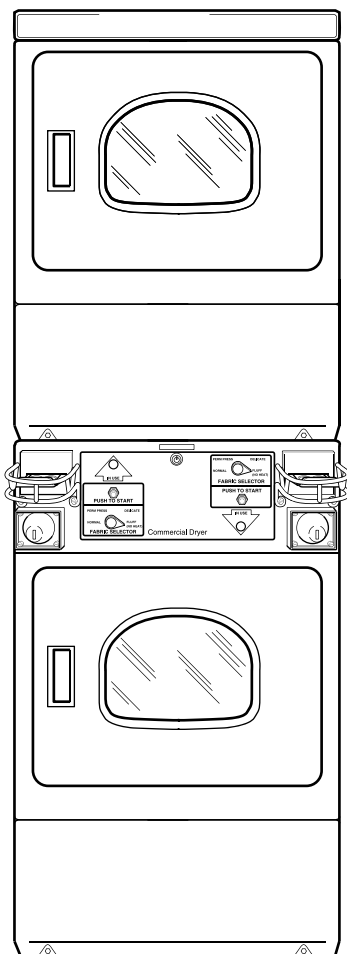


# Stacked Dryers

Metered and Nonmetered

**SSG1**

**Parts**



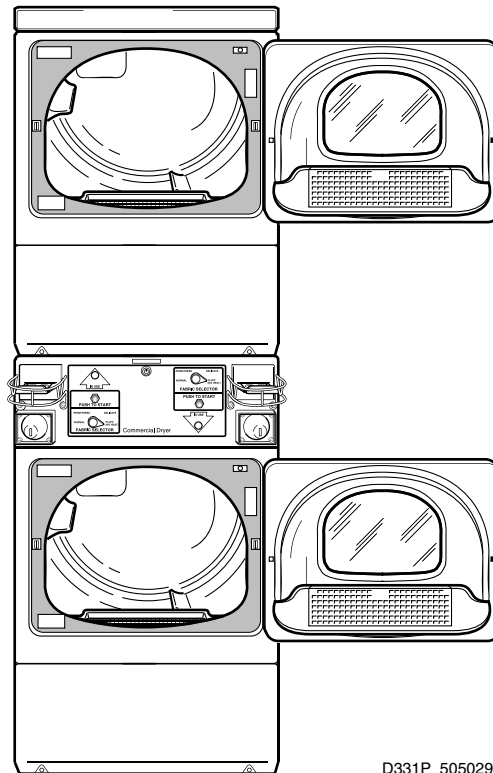
D330P\_505029

## Parts Ordering Information

If literature or replacement parts are required, contact the source from whom the machine was purchased or contact Alliance Laundry Systems at for the name and address of the nearest authorized parts distributor.

## Nameplate Location

When calling or writing about your product, be sure to mention model and serial numbers. Model and serial numbers are located on nameplate(s) as shown.



D331P\_505029

## Model Identification

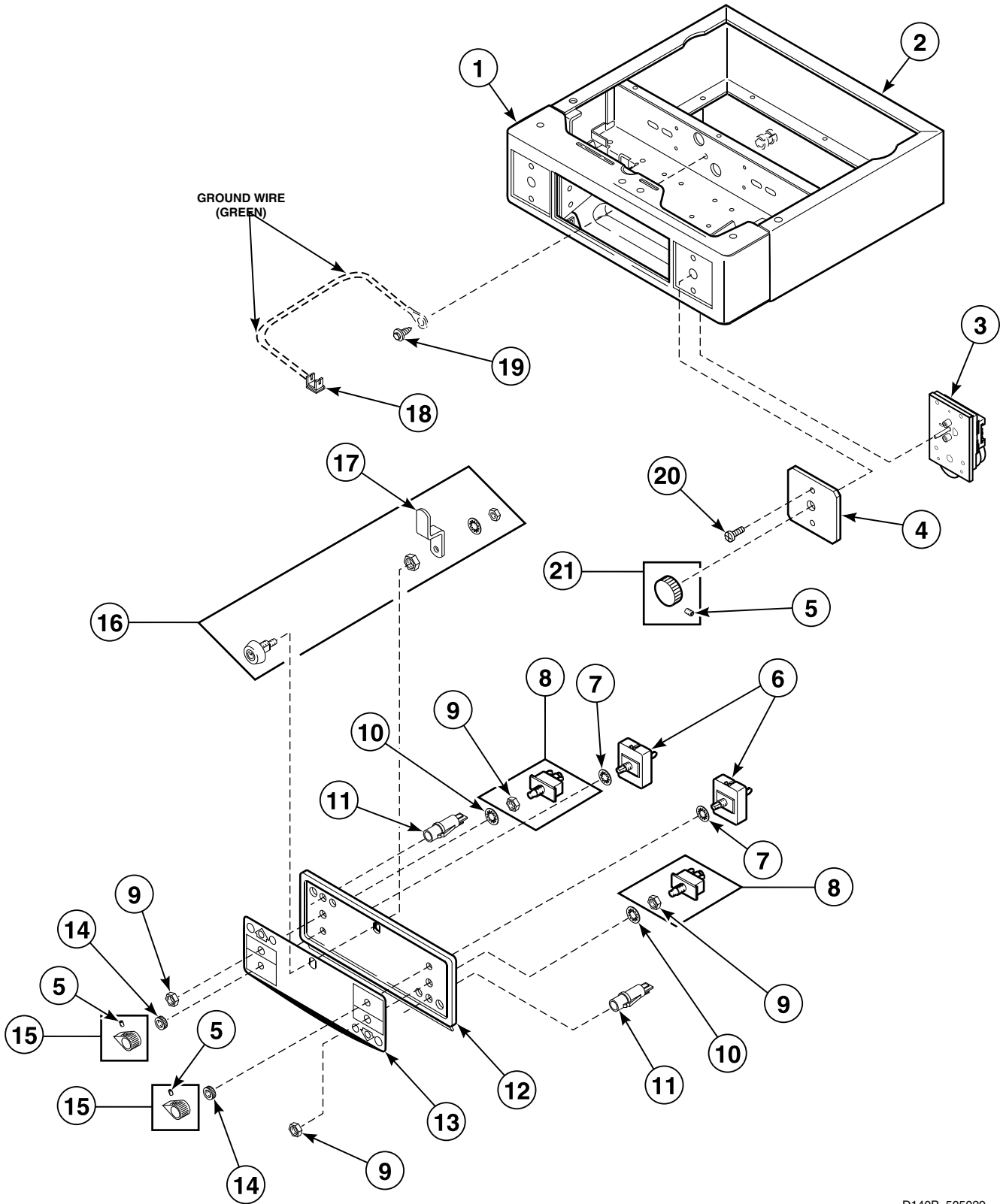
Information in this manual is applicable to these dryer models:

HSE117*A2802	HSE517*C2902	HSG119*A0902	SSE007*A3000	SSG119*A3000
HSE117*A2902	HSE617*C2802	HSG119*C0902	SSE117*A3000	SSG119*A3058
HSE117*C2802	HSE617*C2902	HSG519*A0902	SSE117*A4350	SSG119*A5412
HSE117*C2902	HSE717*A2802	HSG519*C0902	SSE117*A5412	SSG119*A5480
HSE517*A2802	HSE717*A2902	HSG619*C0902	SSE417*A3000	SSG419*A3000
HSE517*A2902	HSE717*C2802	HSG719*A0902	SSE417*A4350	SSG419*A3058
HSE517*C2802	HSE717*C2902	HSG719*C0902		

\* Add Letter To Designate Color. L - Almond W - White

# Control Panel and Controls - Nonmetered

Model SSE007\*A3000



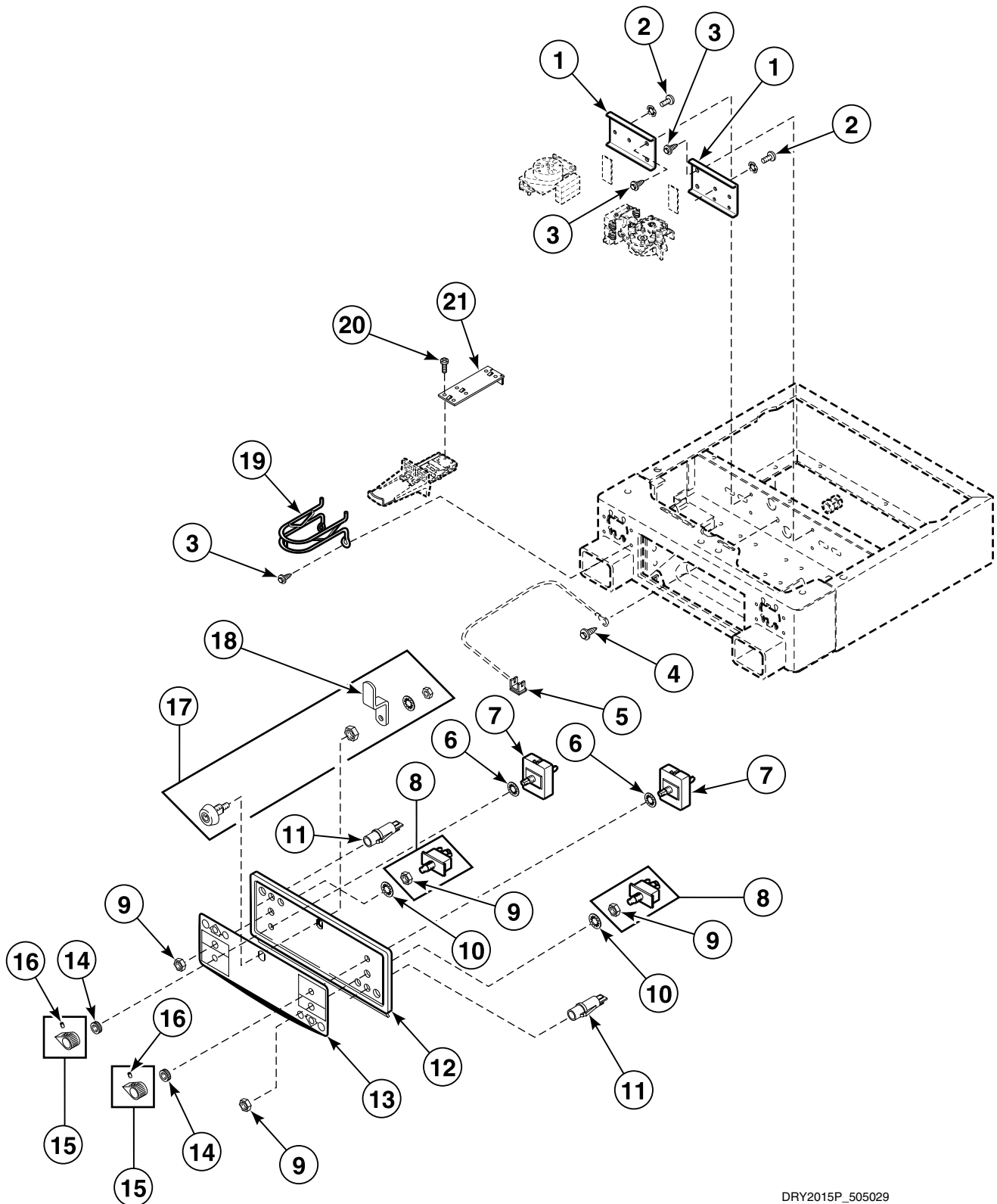
D140P\_505029

SSG1 P1



# Control Panel and Controls - Coin Slide Ready

Models HSE117\*A2802, HSE117\*A2902, HSE117\*C2802, HSE117\*C2902, HSG119\*A0902, HSG119\*C0902, SSE117\*A3000, SSE117\*A4350, SSE117\*A5412, SSG119\*A3000, SSG119\*A3058, SSG119\*A5412 and SSG119\*A5480

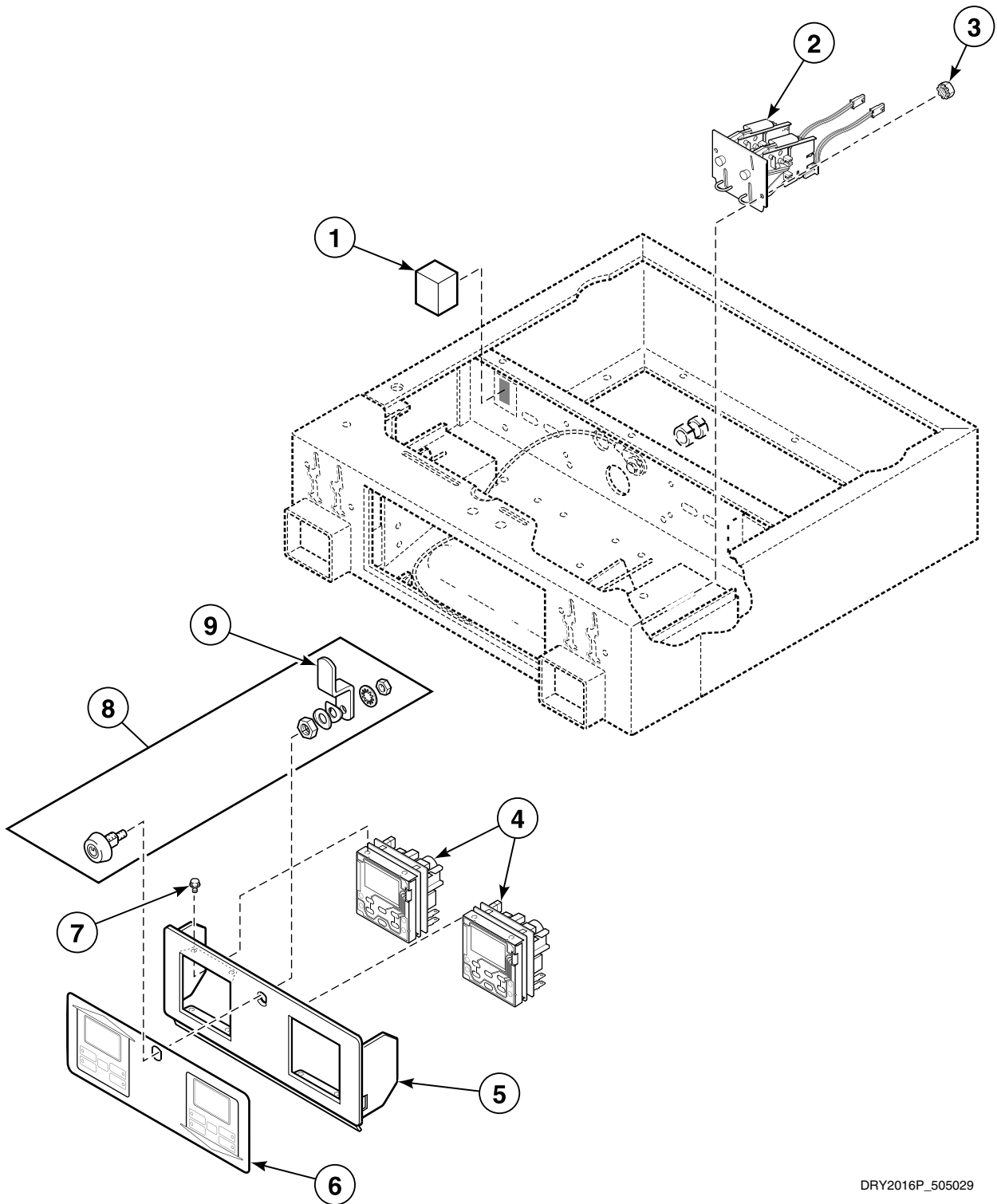


DRY2015P\_505029

SSG1 P2

## Control Panel and Controls - Coin Drop

Models HSE517\*A2802, HSE517\*A2902, HSE517\*C2802, HSE517\*C2902, HSG519\*A0902, HSG519\*C0902, SSE417\*A3000, SSE417\*A4350, SSG419\*A3000 and SSG419\*A3058

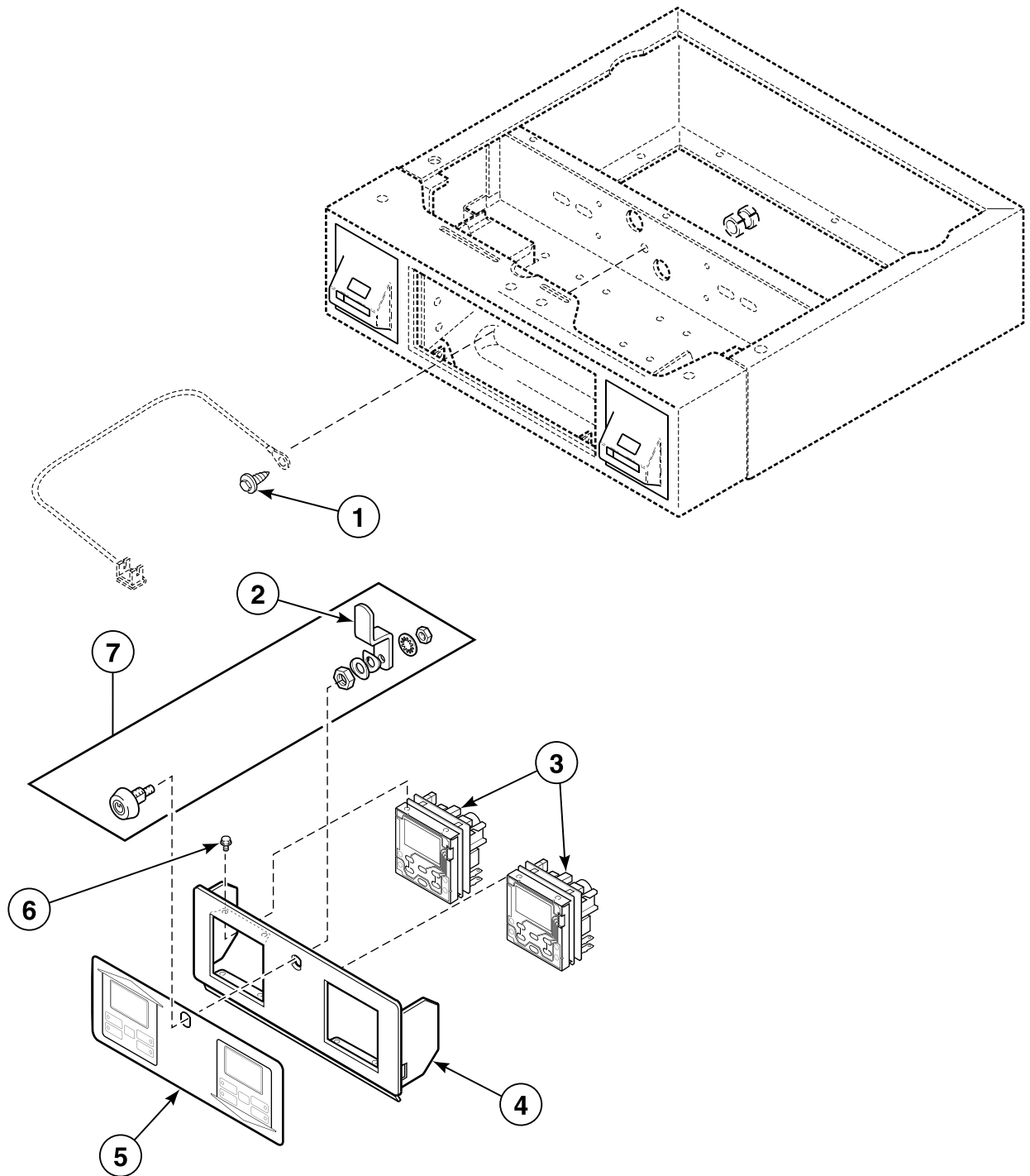


DRY2016P\_505029

SSG1 P3

# Control Panel and Controls - Card Reader Ready and Installed

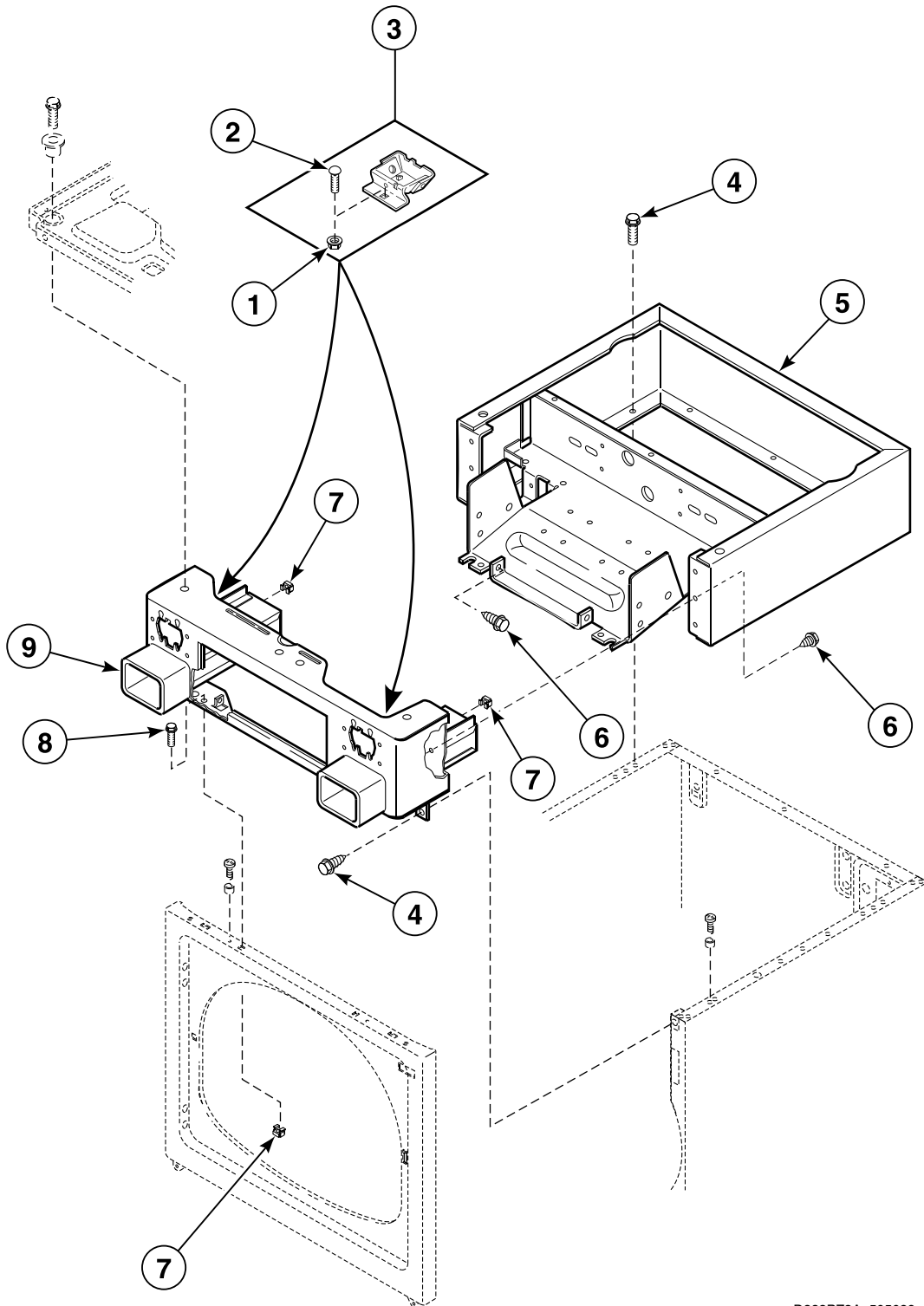
Models HSE617\*C2802, HSE617\*C2902, HSE717\*A2802, HSE717\*A2902, HSE717\*C2802,  
HSE717\*C2902, HSG619\*C0902, HSG719\*A0902 and HSG719\*C0902



D353P\_505029

## Control Cabinet - Coin Slide Ready

Models HSE117\*A2802, HSE117\*A2902, HSE117\*C2802, HSE117\*C2902, HSG119\*A0902, HSG119\*C0902, SSE117\*A3000, SSE117\*A4350, SSE117\*A5412, SSG119\*A3000, SSG119\*A3058, SSG119\*A5412 and SSG119\*A5480

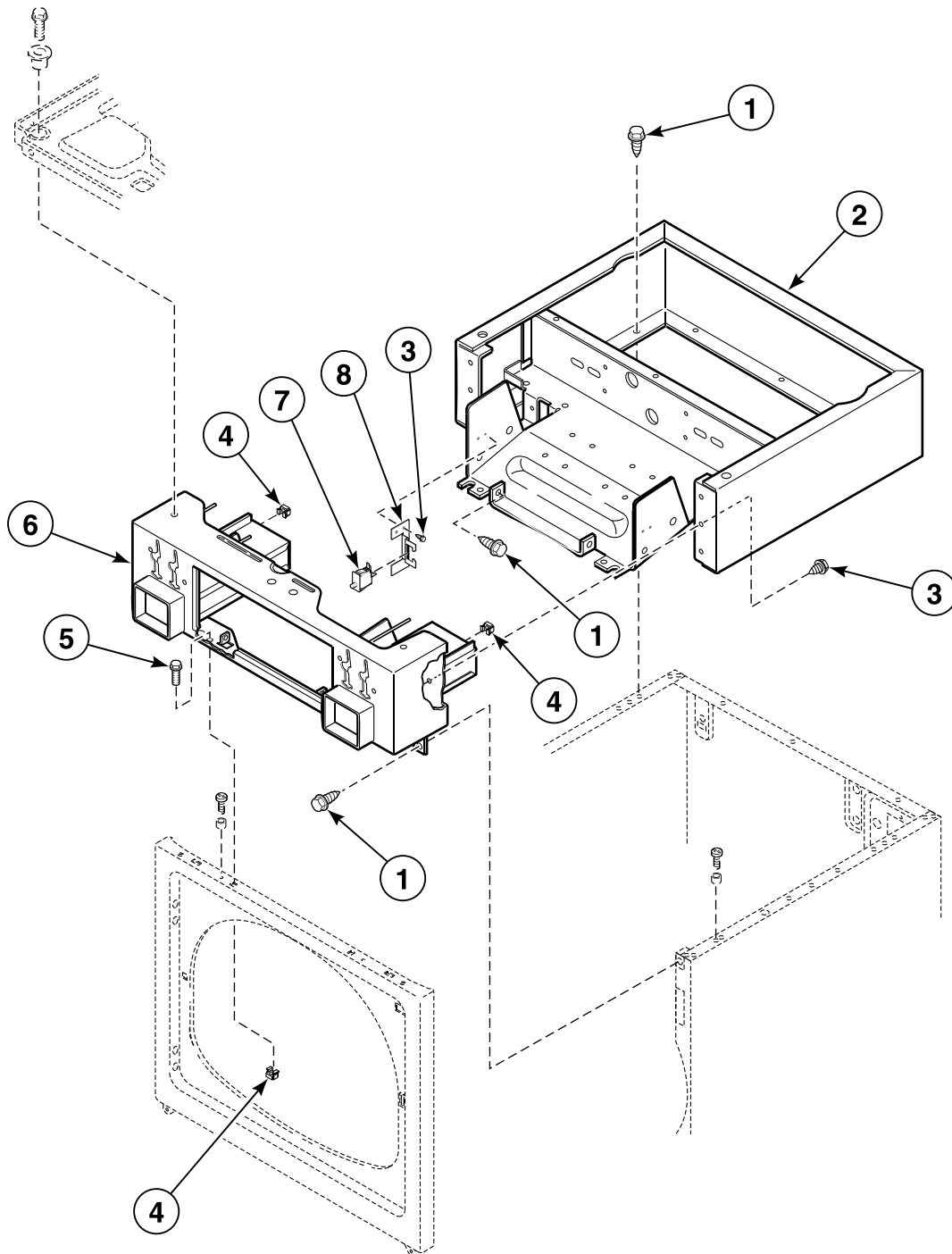


D333PZ3A\_505029

# SSG1 P5

# Control Cabinet - Coin Drop

Models HSE517\*A2802, HSE517\*A2902, HSE517\*C2802, HSE517\*C2902, HSG519\*A0902, HSG519\*C0902, SSE417\*A3000, SSE417\*A4350, SSG419\*A3000 and SSG419\*A3058

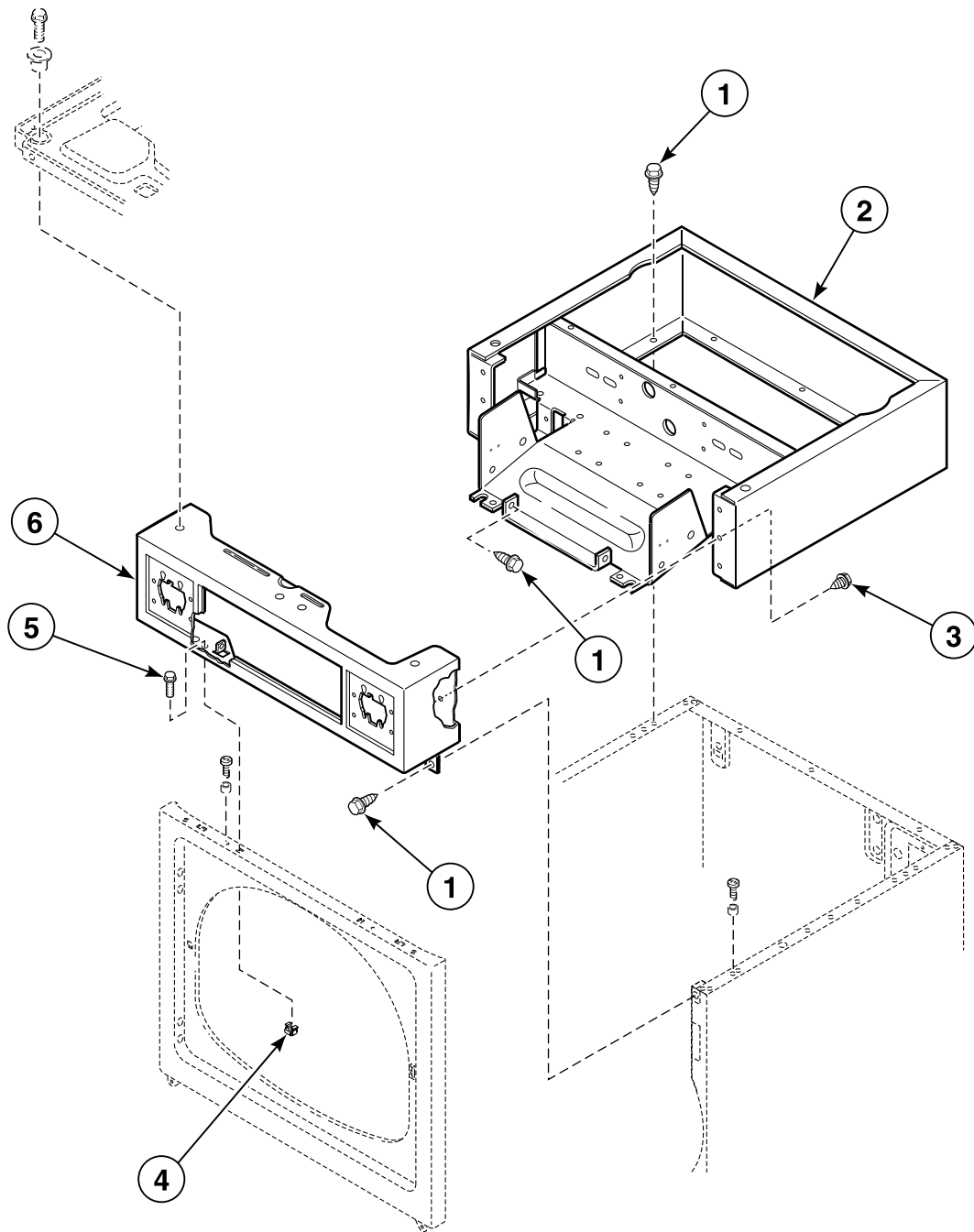


D354P\_505029

SSG1 P6

# Control Cabinet - Card Reader Ready

Models HSE617\*C2802, HSE617\*C2902 and HSG619\*C0902

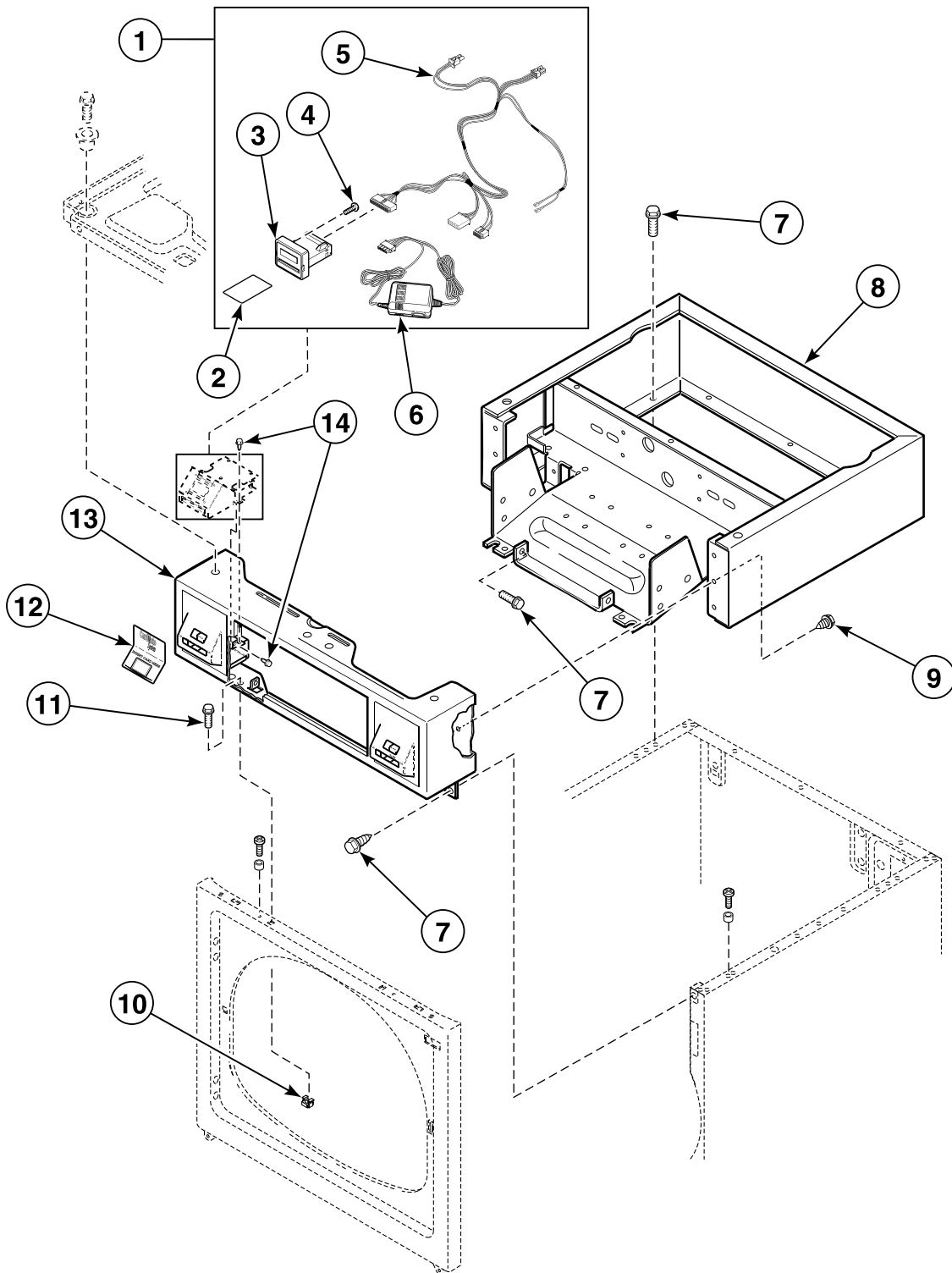


D355P\_505029

SSG1 P7

# Control Cabinet - Card Reader Installed

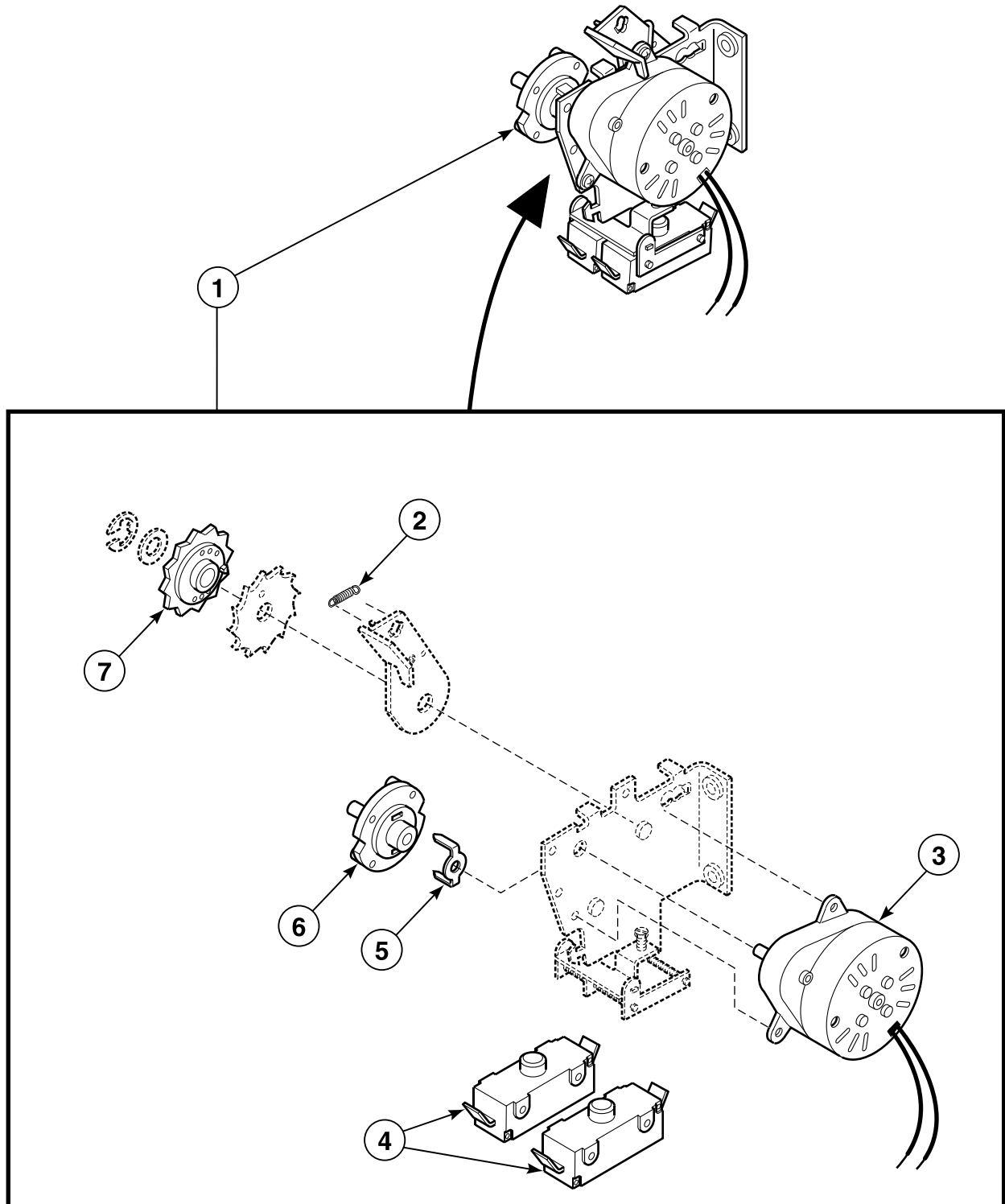
Models HSE717\*A2802, HSE717\*A2902, HSE717\*C2802, HSE717\*C2902, HSG719\*A0902 and HSG719\*C0902



DRY2021P\_505029

## Accumulator - Coin Slide Models

Models HSE117\*A2802, HSE117\*A2902, HSE117\*C2802, HSE117\*C2902, HSG119\*A0902, HSG119\*C0902, SSE117\*A3000, SSE117\*A4350, SSE117\*A5412, SSG119\*A3000, SSG119\*A3058, SSG119\*A5412 and SSG119\*A5480



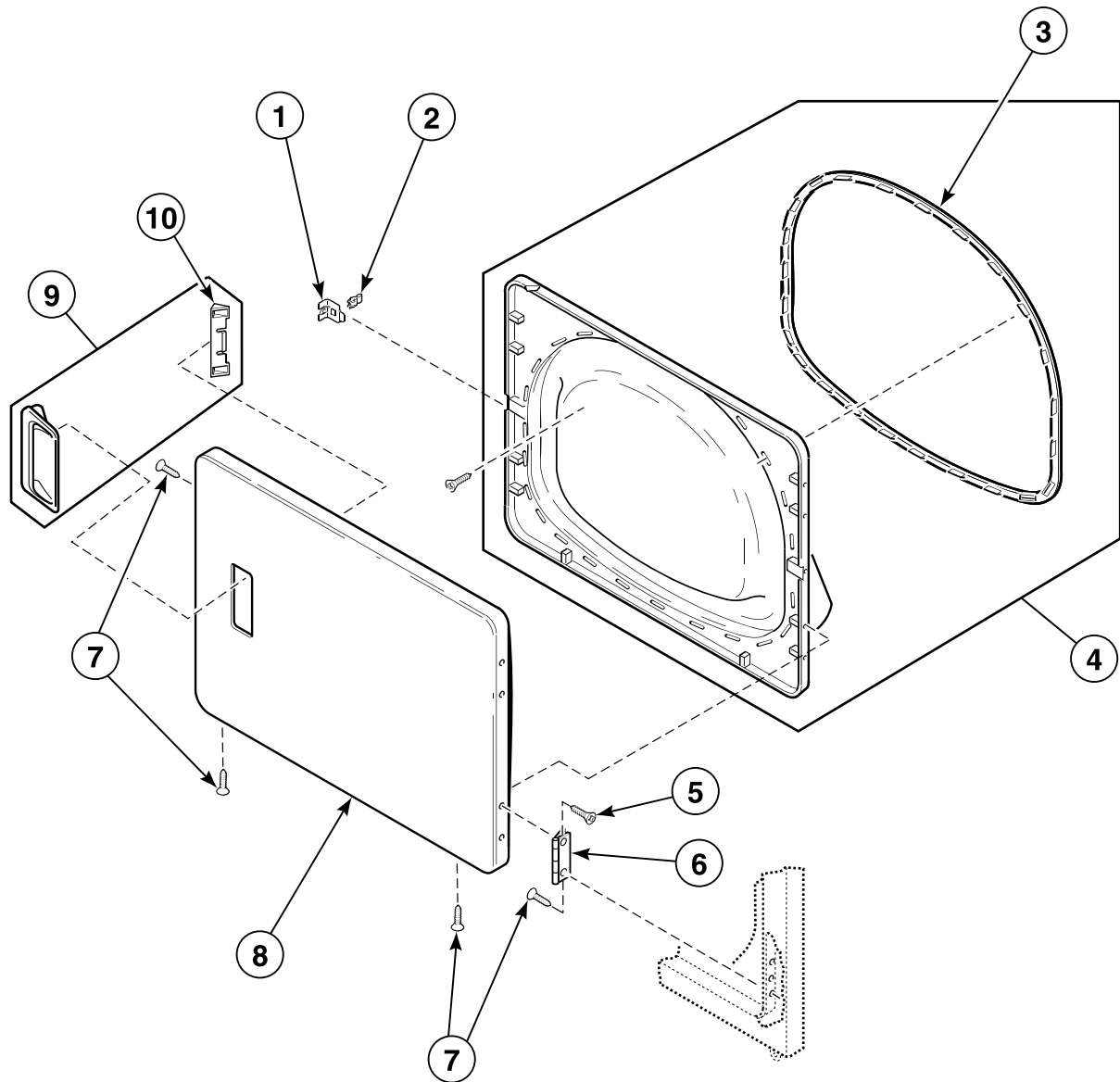
D362P\_505029

SSG1 P9



# Loading Door without Window

Model SSE007\*A3000

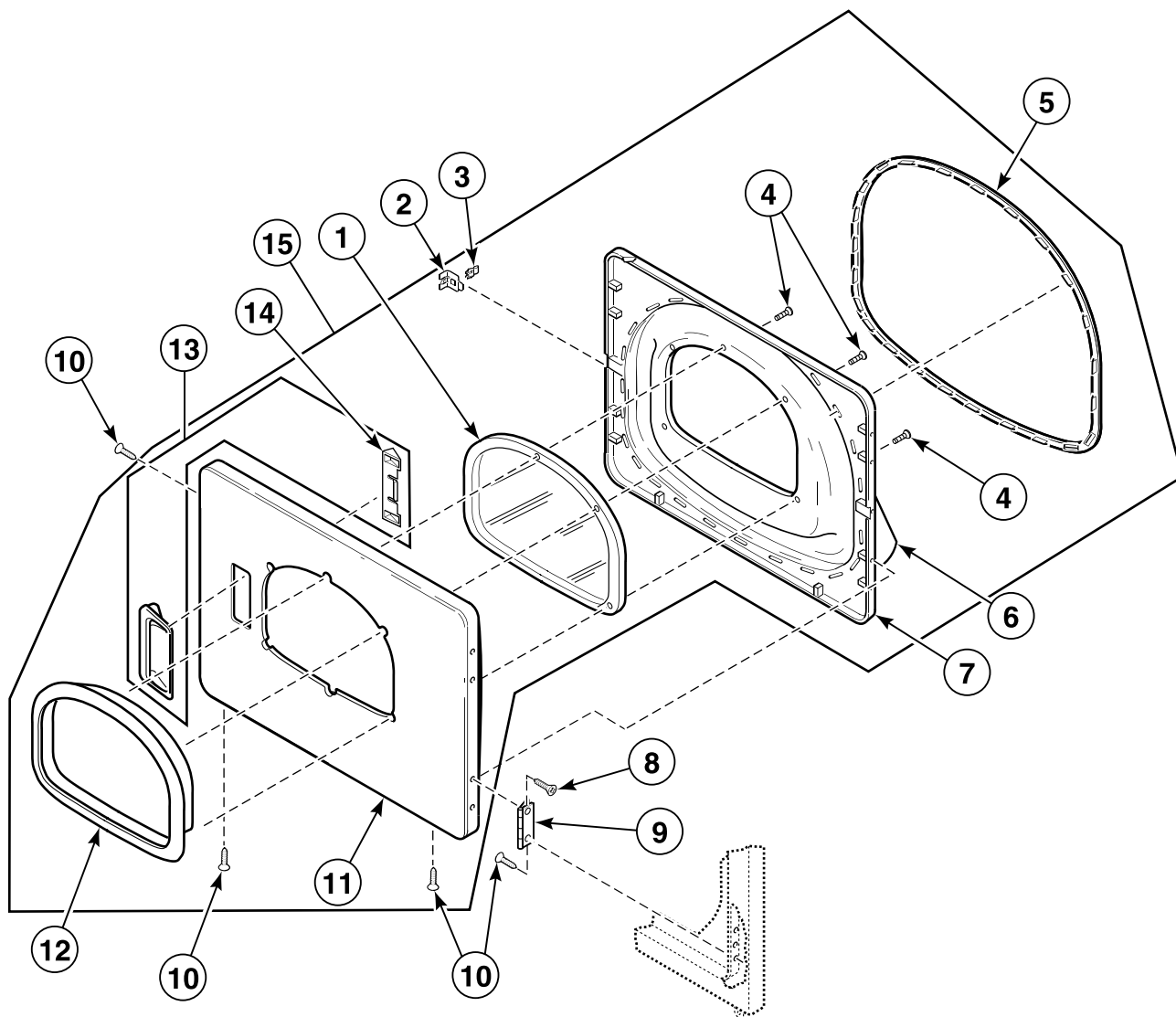


DRY1737P\_505029

SSG1 P10

# Loading Door with Window

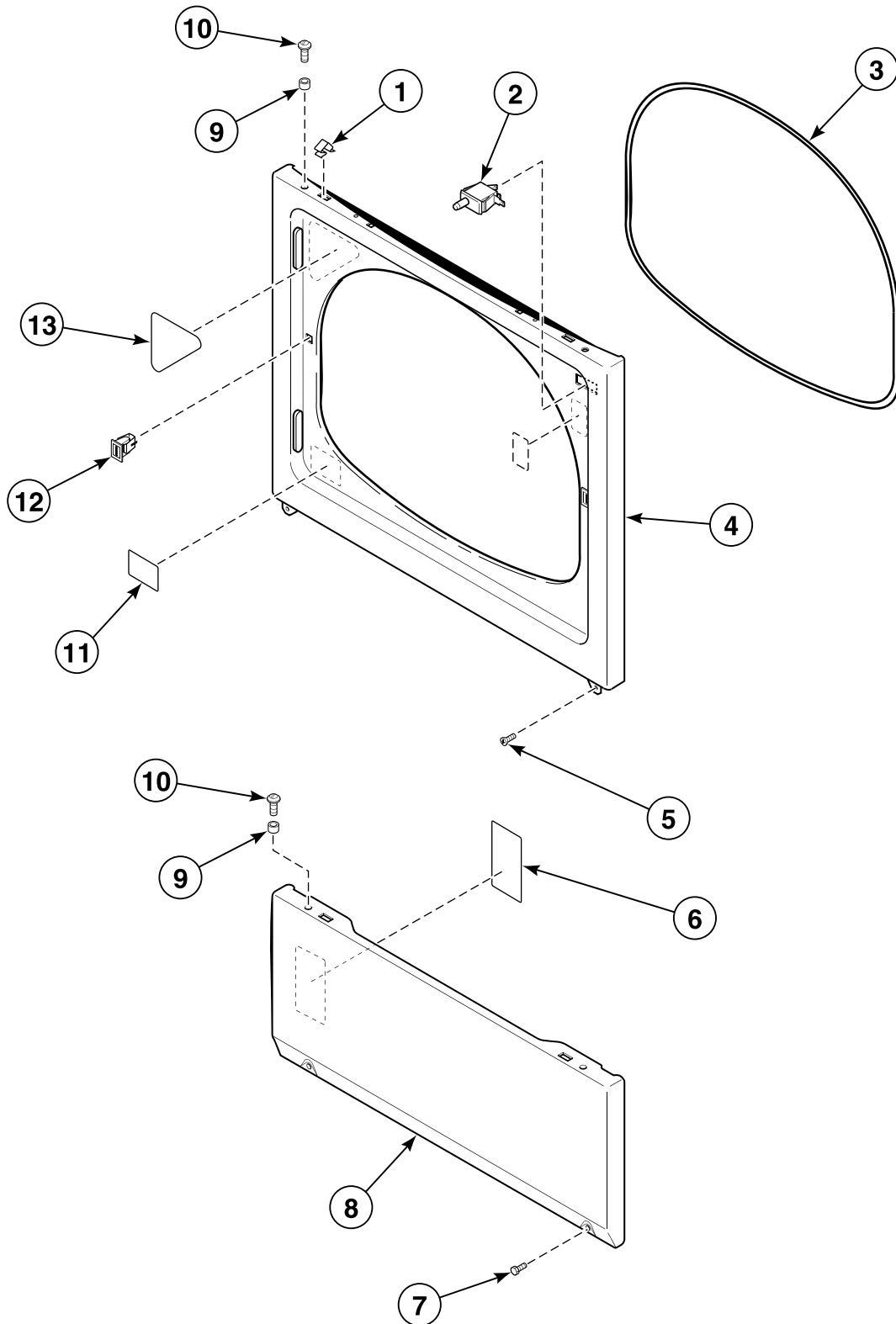
All Models Except SSE007\*A3000



D357P\_505029

# SSG1 P11

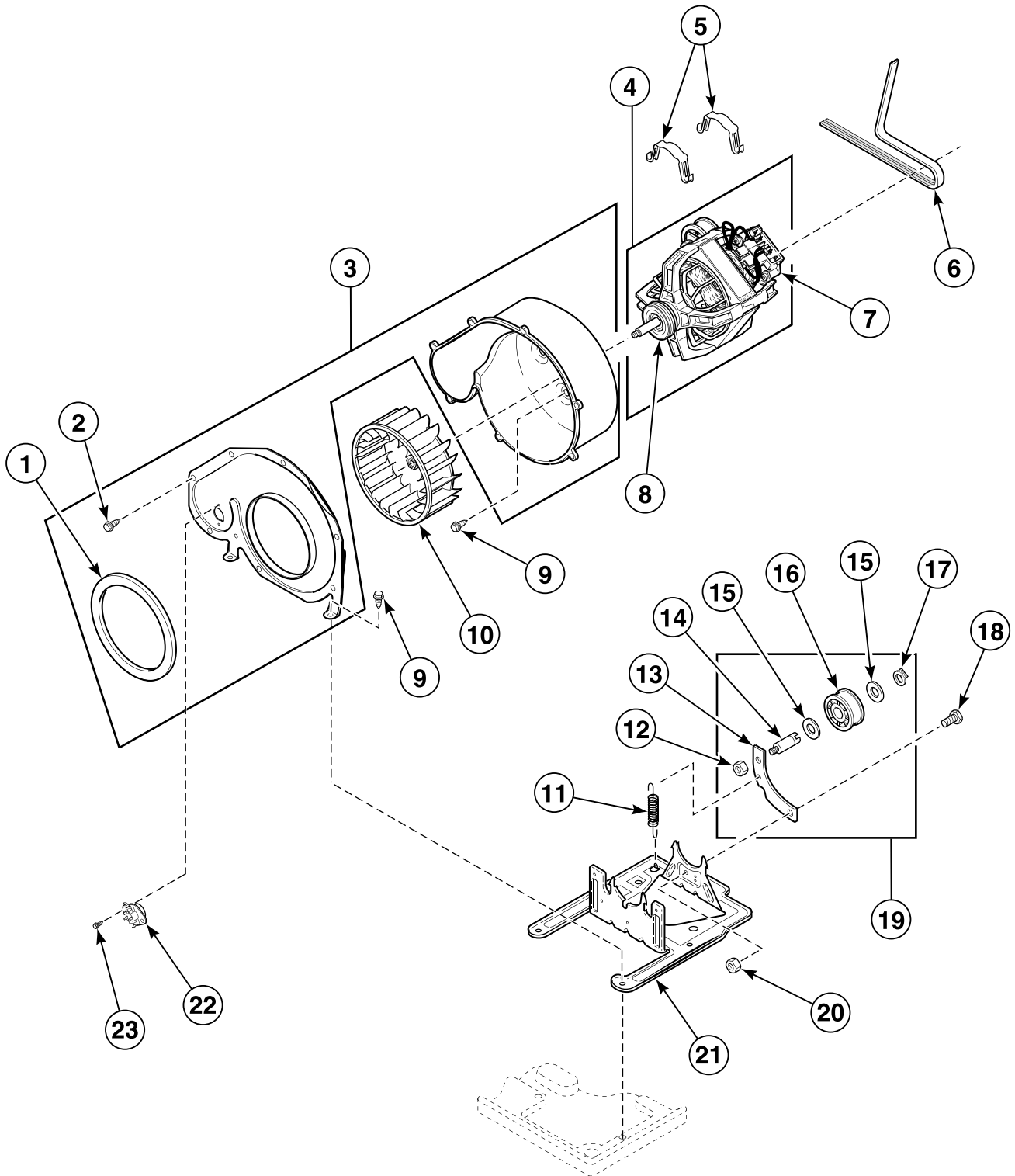
## Access Panel, Front Panel and Seal



D313P\_505029

SSG1 P12

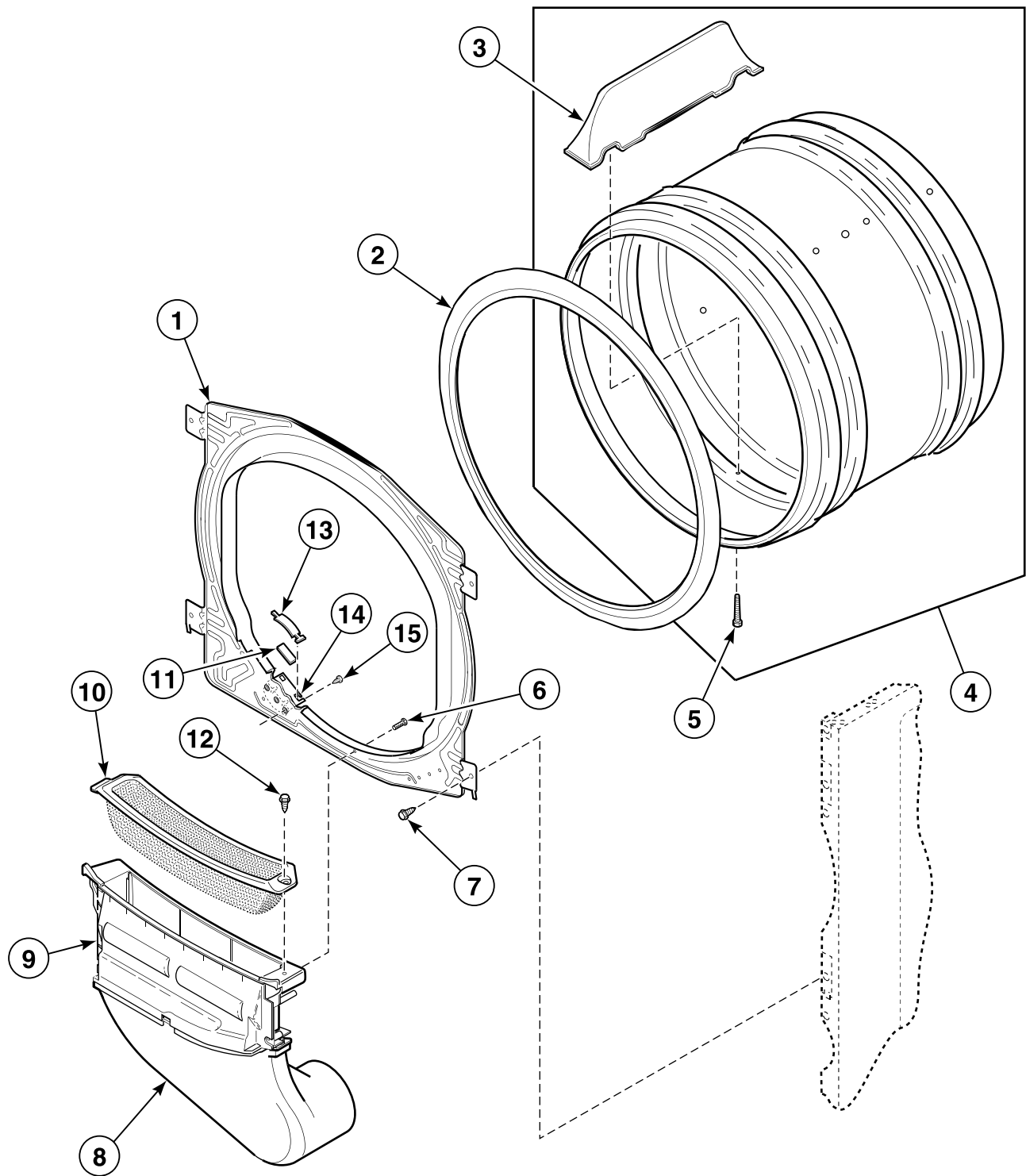
## Motor, Exhaust Fan and Belt



DRY1825P\_505029

SSG1 P13

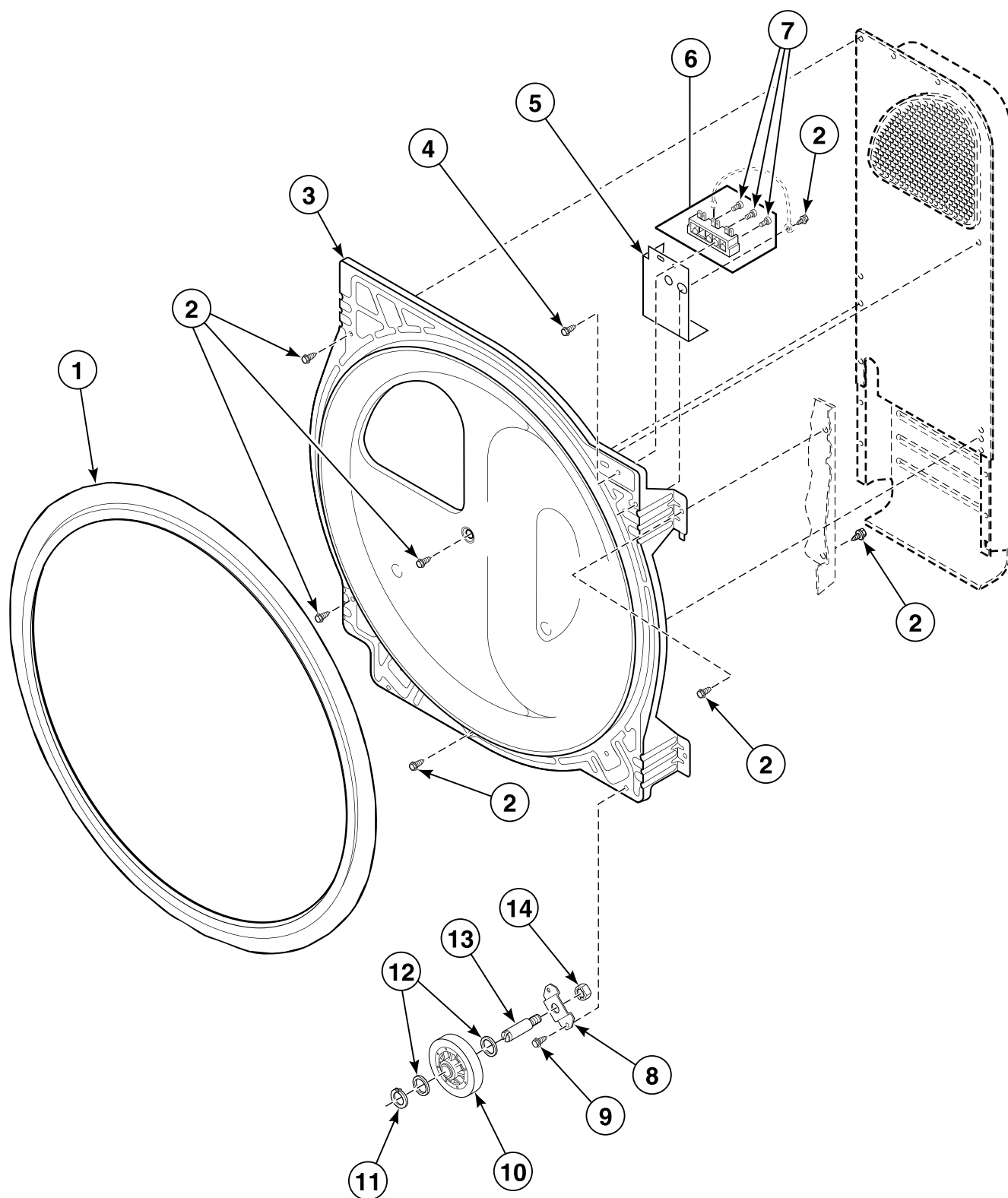
## Front Bulkhead, Air Duct, Felt Seal and Cylinder



D314P\_505029

SSG1 P14

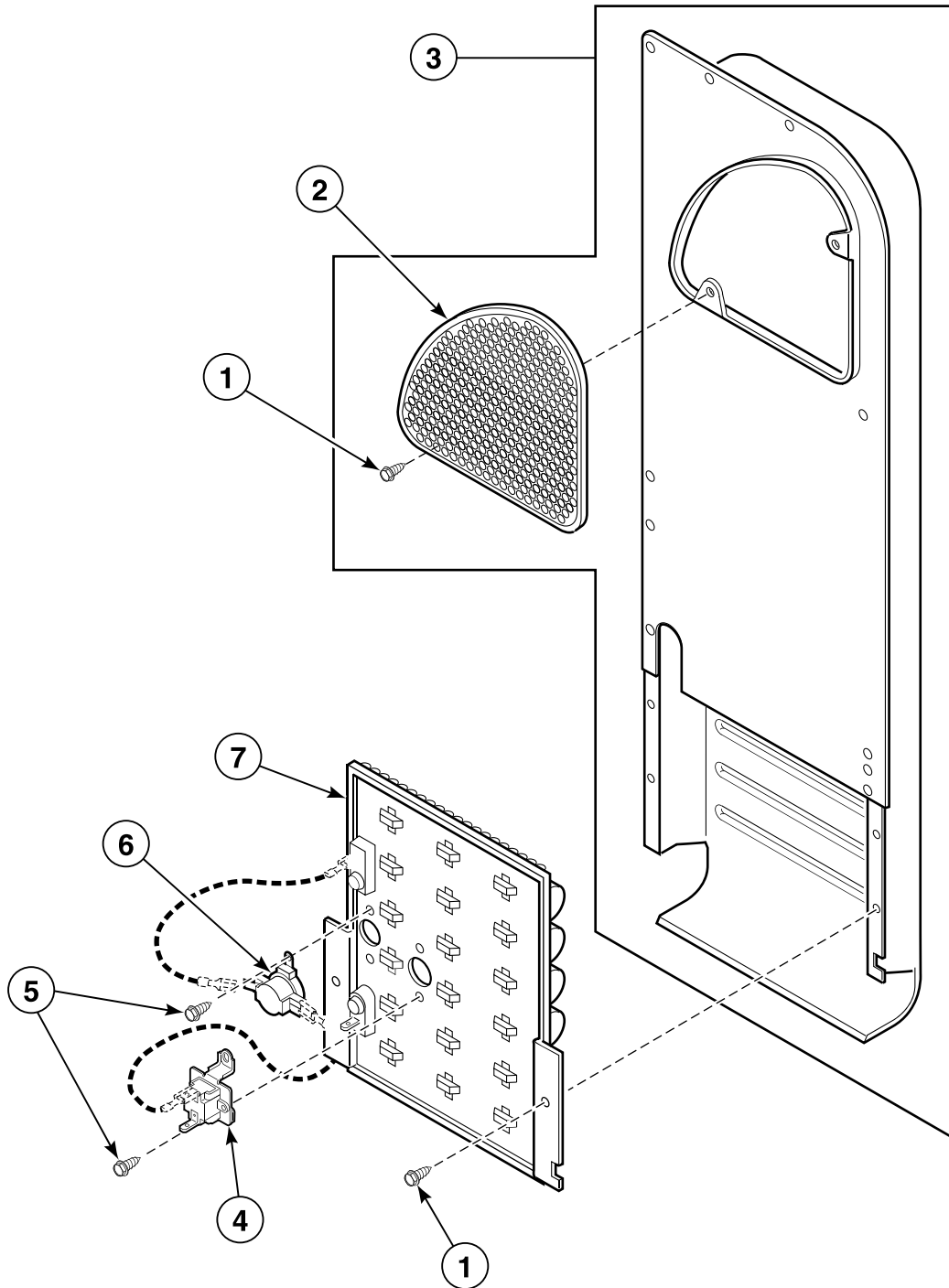
## Rear Bulkhead, Felt Seal, Cylinder Roller and Terminal Block



D291P\_505029

# Heater Duct and Element Assembly

Electric Model Dryers

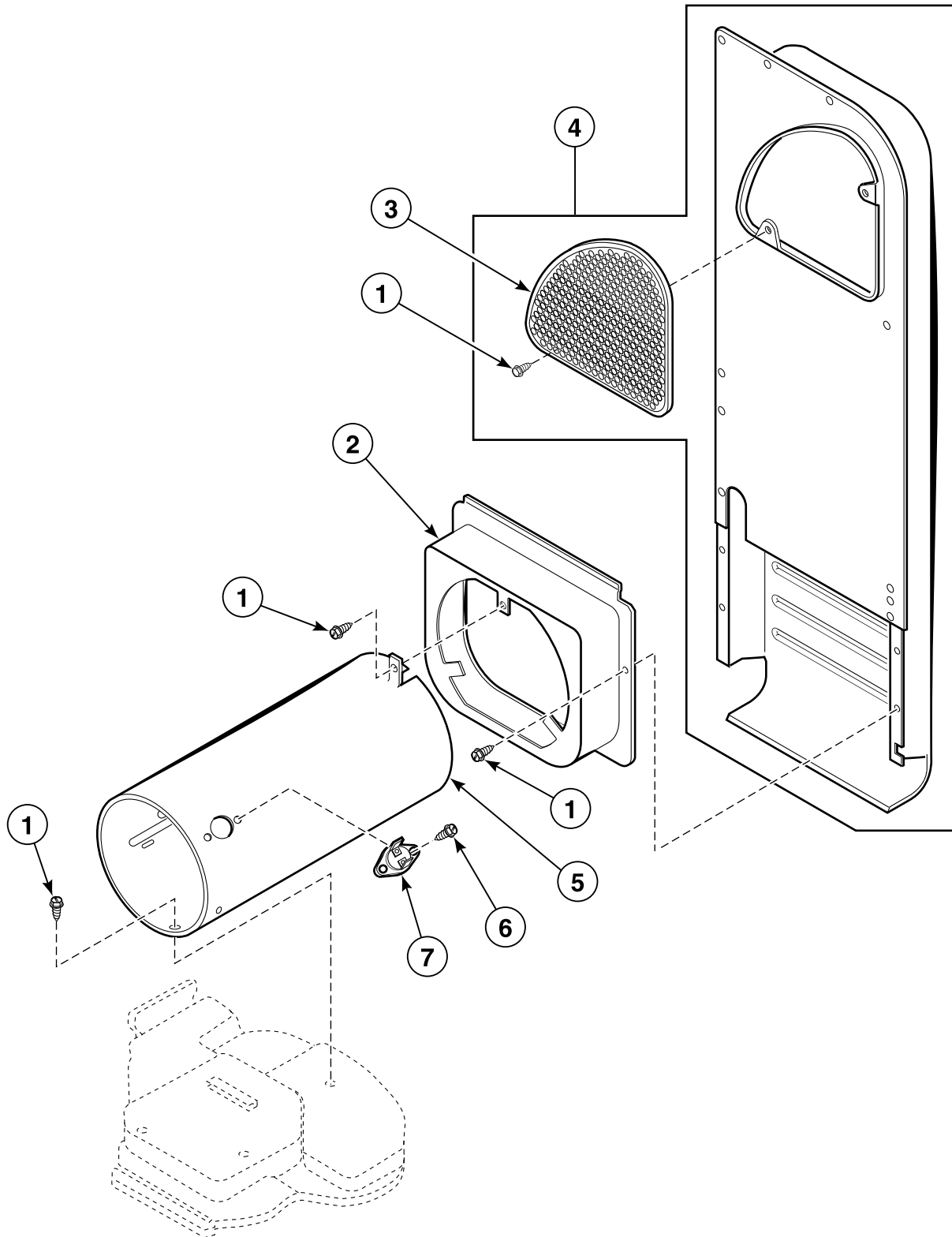


D350P\_505029

SSG1 P16

## Heater Duct and Limit Thermostat

Models HSG119\*A0902, HSG119\*C0902, HSG519\*A0902, HSG519\*C0902, HSG619\*C0902, HSG719\*A0902, HSG719\*C0902, SSG119\*A3000, SSG119\*A5412, SSG119\*A5480 and SSG419\*A3000



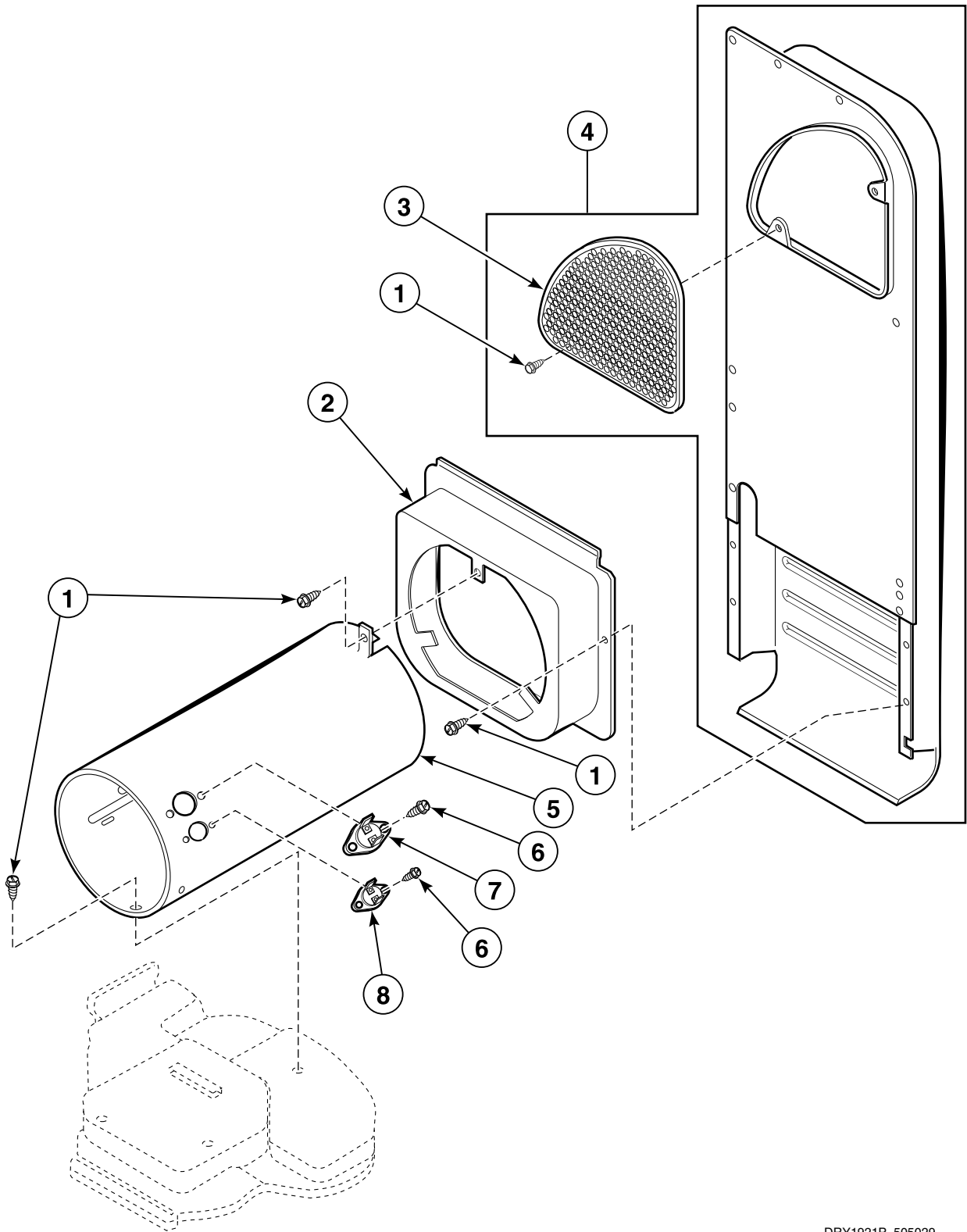
D315P\_505029

SSG1 P17



# Heater Duct, Limit Thermostat and Thermostat

Models SSG119\*A3058 and SSG419\*A3058

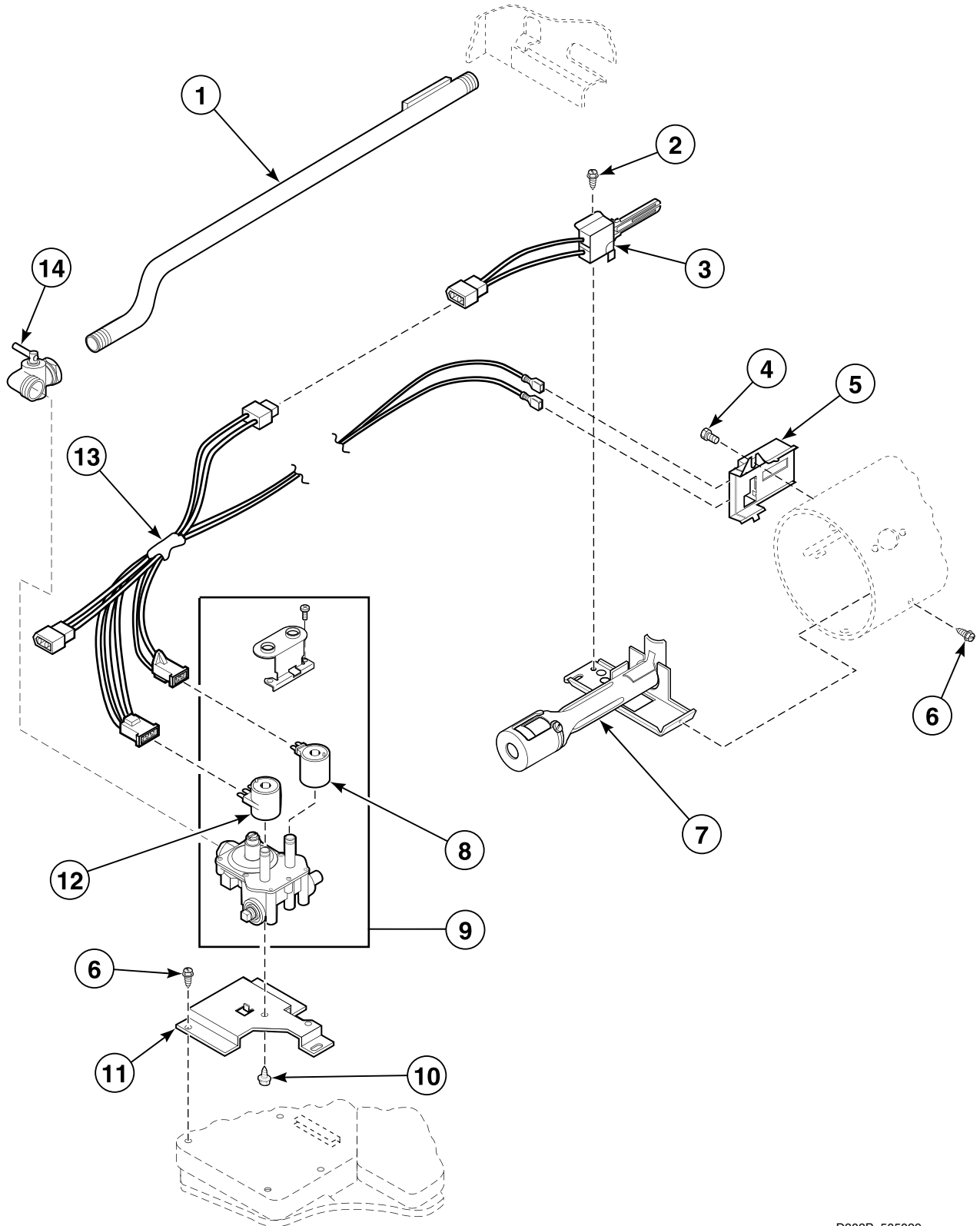


DRY1921P\_505029

## SSG1 P18

# Gas Valve and Igniter

All Gas Model Dryers Except SSG119\*A3058 and SSG419\*A3058

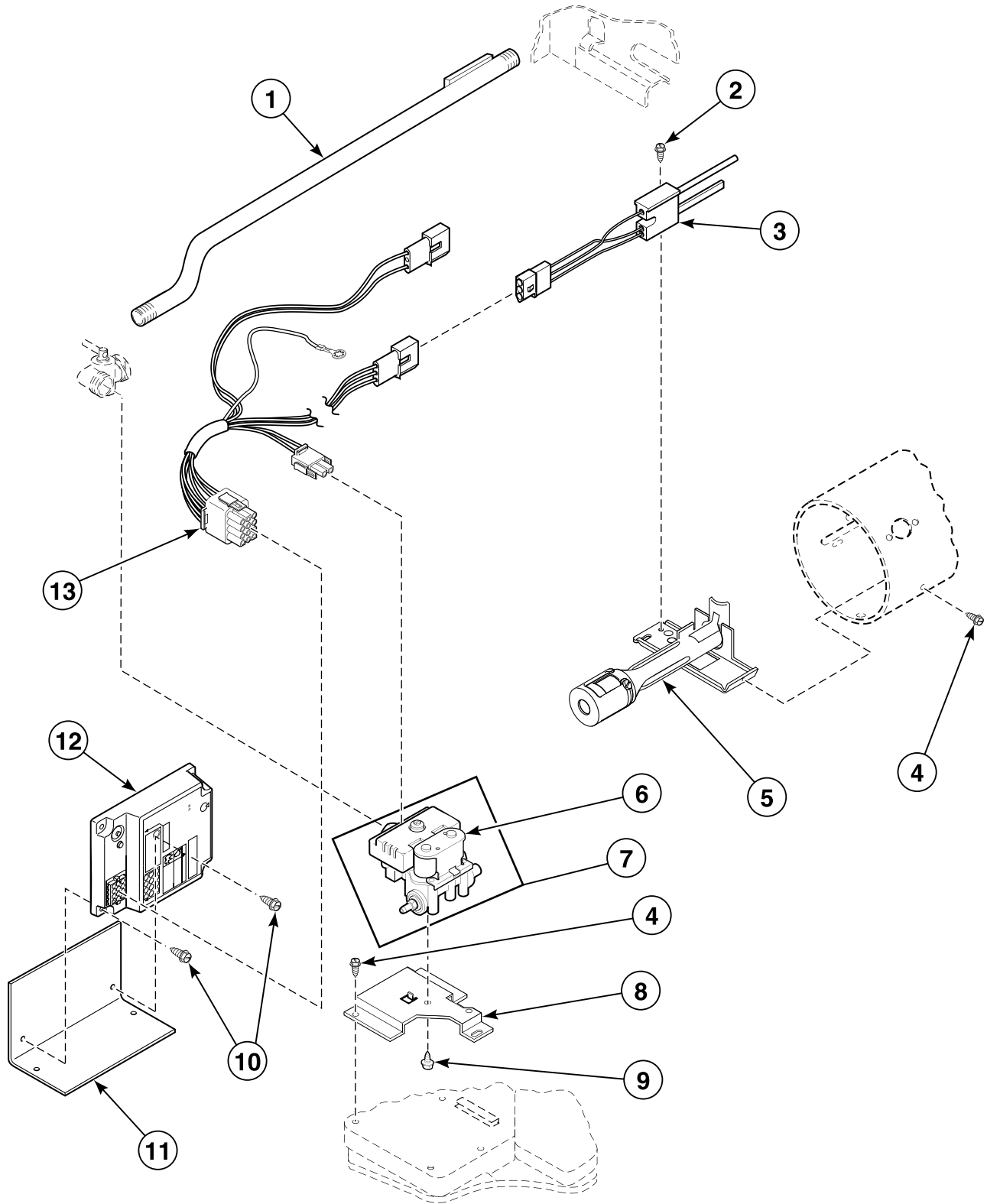


D303P\_505029

SSG1 P19

# Gas Valve, Igniter and Ignition Control

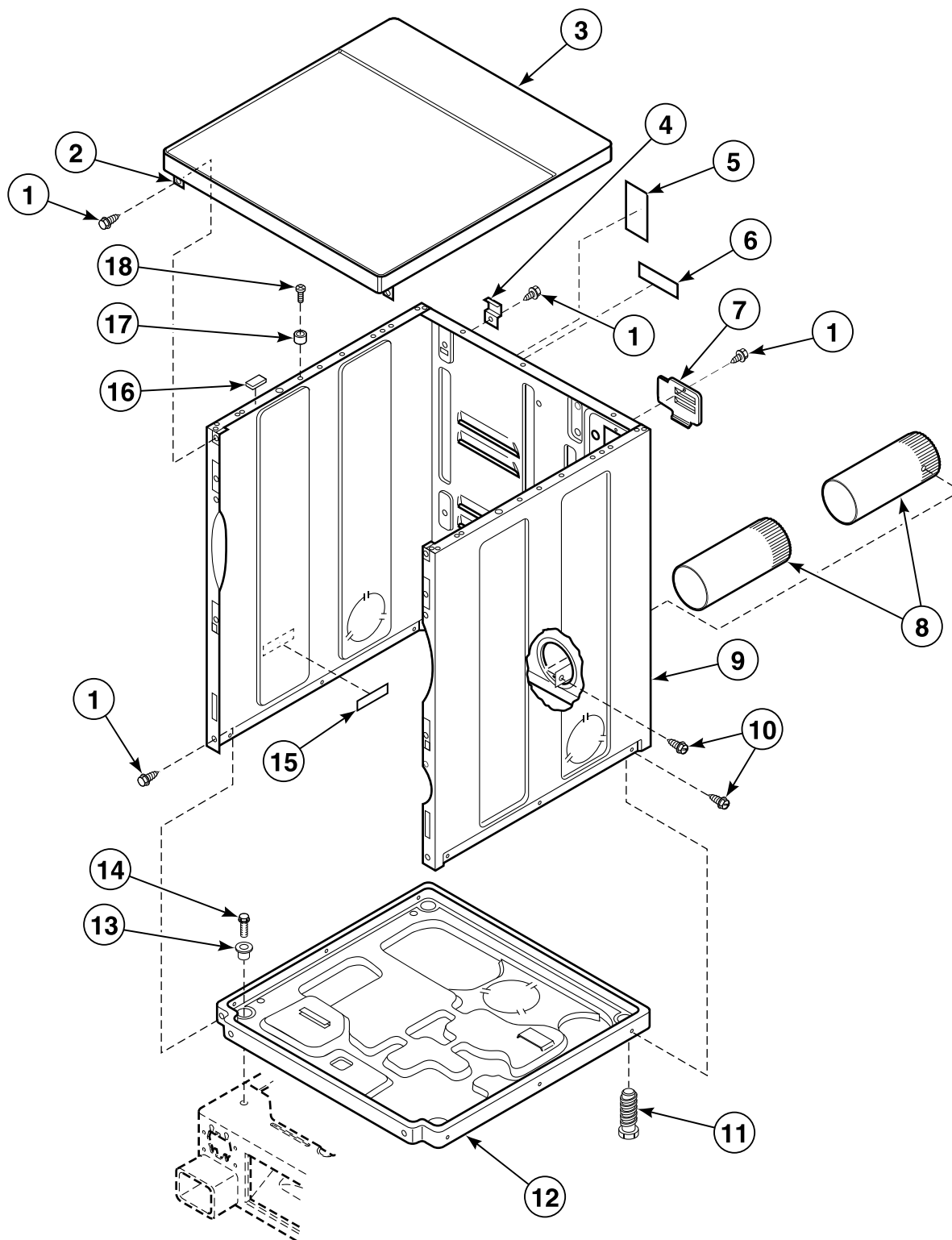
Models SSG119\*A3058 and SSG419\*A3058



D371P\_505029

# SSG1 P20

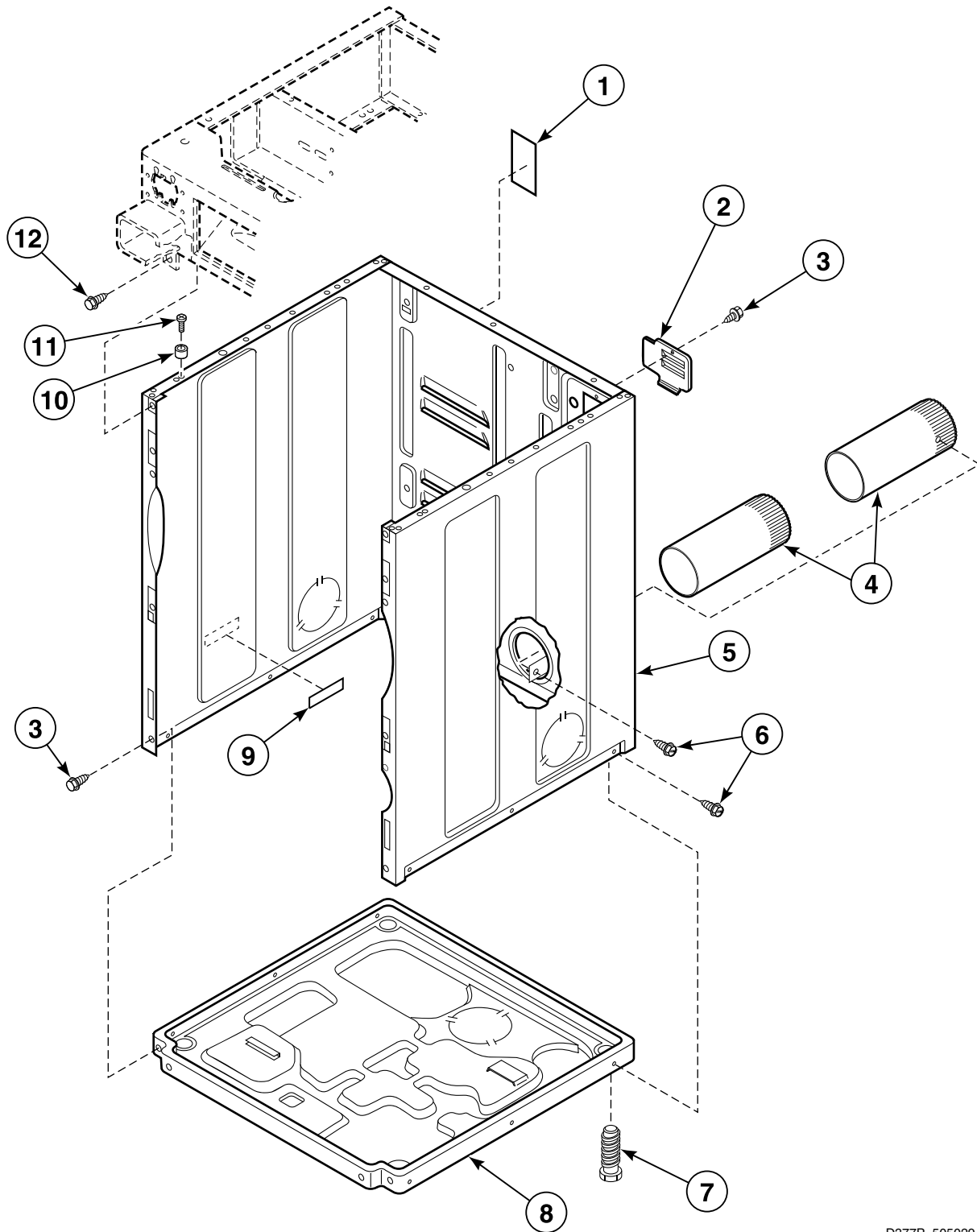
## Cabinet, Exhaust Duct and Base - Upper Dryer



D376P\_505029

SSG1 P21

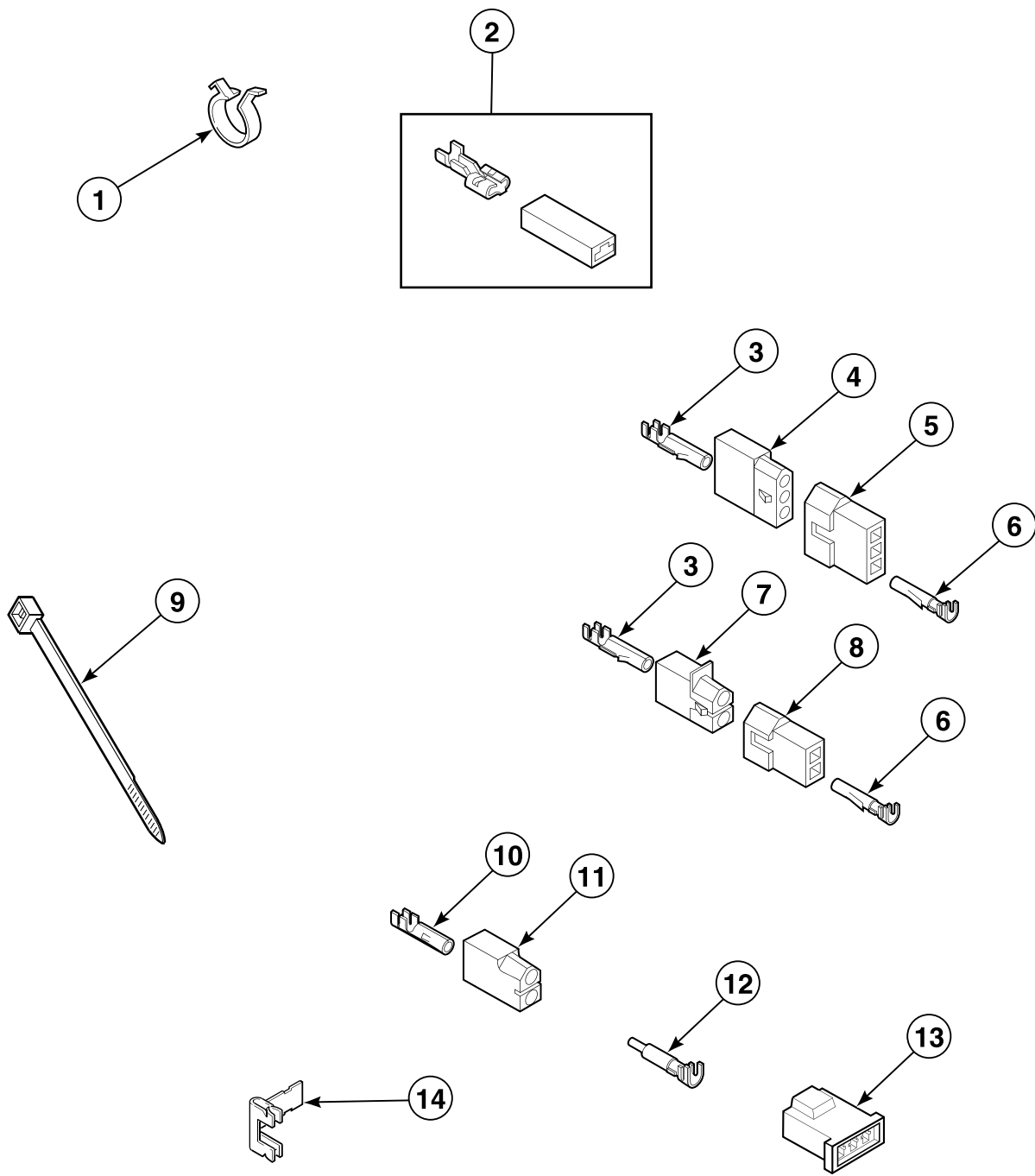
## Cabinet, Exhaust Duct and Base - Lower Dryer



D377P\_505029

SSG1 P22

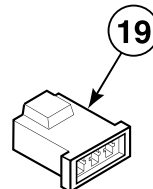
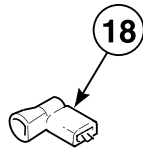
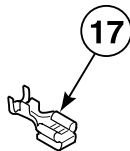
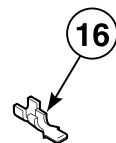
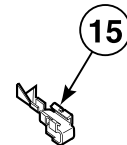
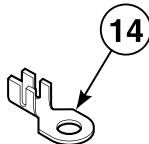
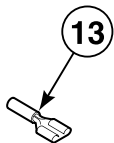
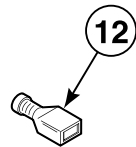
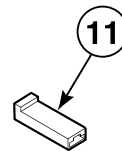
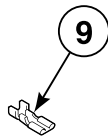
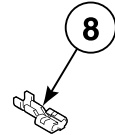
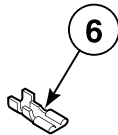
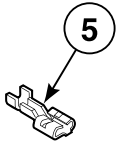
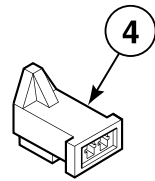
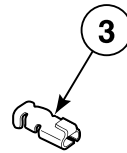
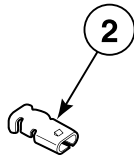
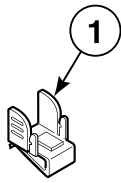
# Terminal Block and Terminals



DRY1924P\_505029

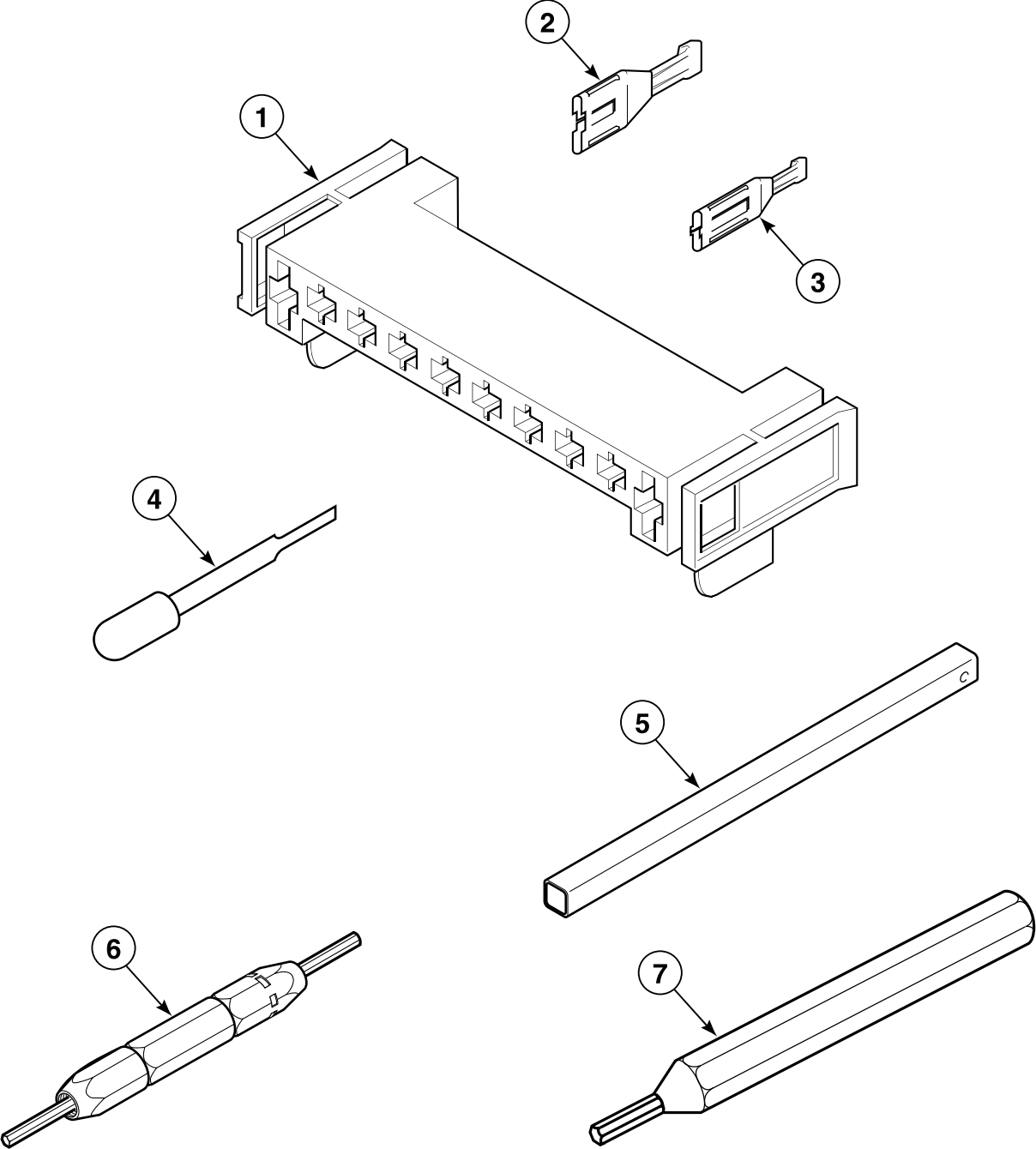
SSG1 P23

# Terminals



D326P\_505029

# Terminal Extractor Tools

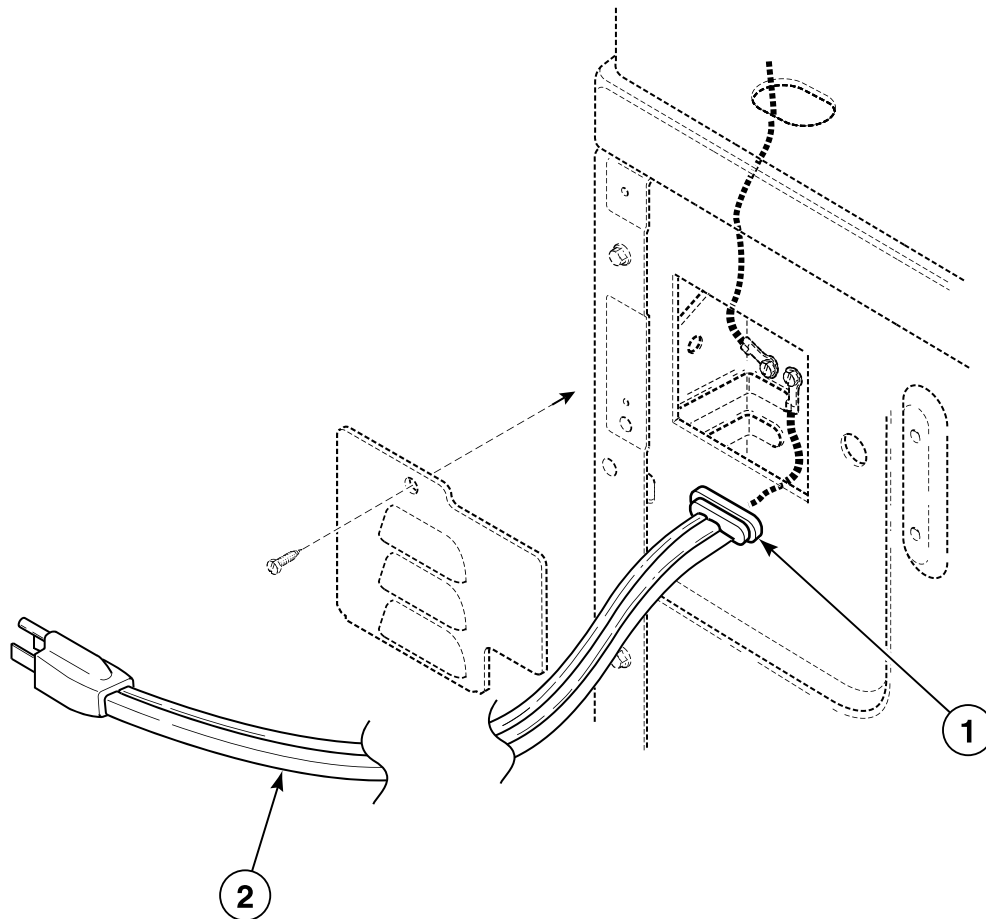


D319P\_505029

SSG1 P25



## Lead-In Cord



DRY1856P\_505029

SSG1 P26