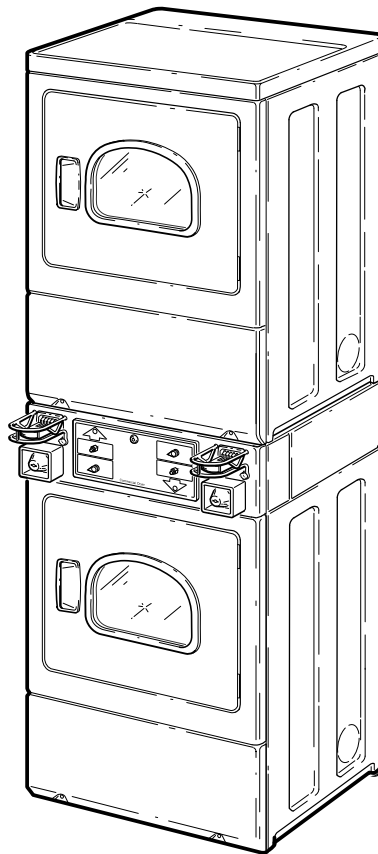


Commercial Dryers SSG2

Parts

Metered and Nonmetered
Refer to Page 3 for Model Numbers



D009C_512026

Parts Ordering Information

If literature or replacement parts are required, contact the source from whom the machine was purchased or contact Alliance Laundry Systems at for the name and address of the nearest authorized parts distributor.

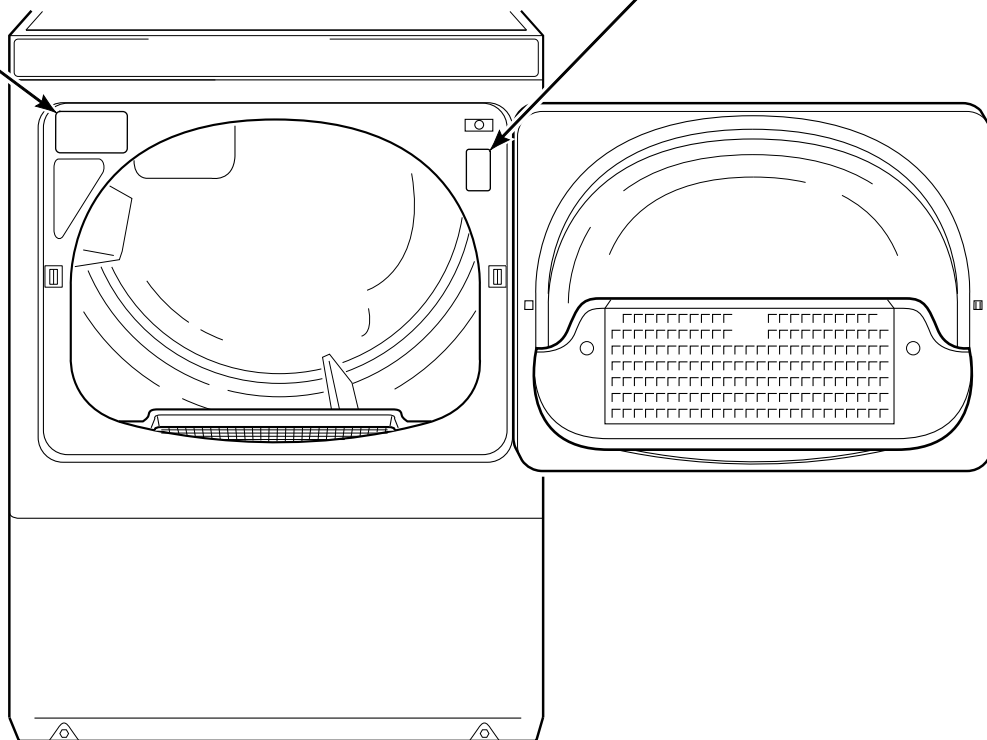
For technical assistance, call either of the numbers listed below:

Nameplate Location

When calling or writing about your product, be sure to mention model and serial numbers. Model and serial numbers are located on nameplate(s) as shown.

NAMEPLATE
(Models starting Serial No. 1206025810)

NAMEPLATE
(Models through Serial No. 1206025809)



DRY2283P_512026

Model Identification

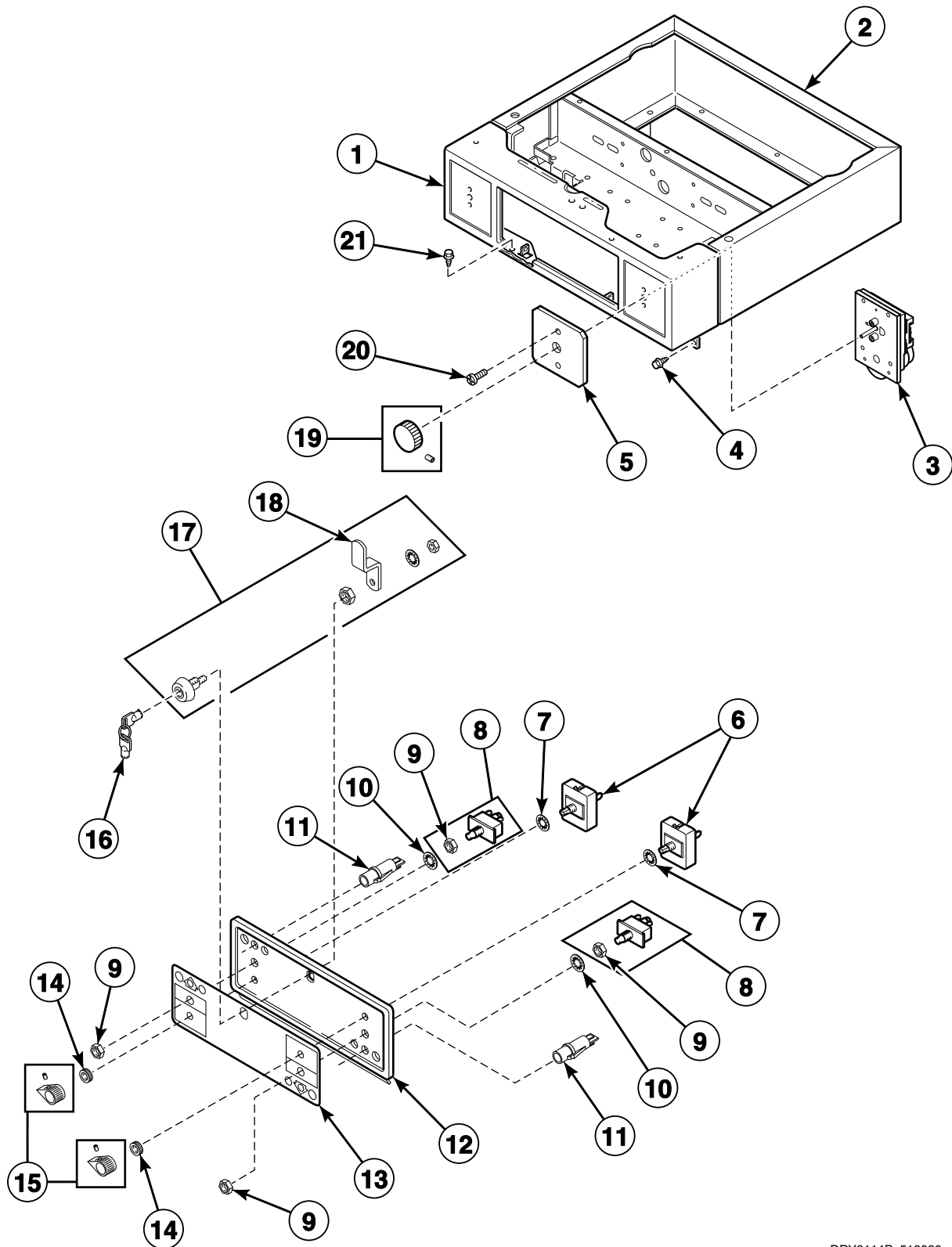
Information in this manual is applicable to these dryer models:

HSE117*F2802	HSG119*F0902	SSE007*F3000	SSG109*M3013
HSE117*F2902	HSG519*F0902	SSE007*F4350	SSG119*F3000
HSE517*F2802	HSG719*F0902	SSE107*G3018	SSG119*F3058
HSE517*F2902	HSG919*F0902	SSE117*F3000	SSG119*F3060
HSE717*F2802	HSGB19*J0902	SSE117*F4350	SSG119*F5412
HSE717*F2902	HS GF19*J0902	SSE117*F5412	SSG119*F5480
HSE917*F2802	HSGR19*F0902	SSE117*G3018	SSG119*M3013
HSE917*F2902	HSGT19*F0902	SSE417*F3000	SSG419*F3000
HSEB17*J2802	HSGX19*F0902	SSE417*F4350	SSG419*F3058
HSEB17*J2902	HSGY19*F0902	SSE807*F3000	SSG909*M3013
HSEBXFGW131DW01	HSGZ19*F0902	SSE807*F4350	SSG919*F3028
HSEBXFGW171FW28	JSE807*F4350	SSE807*G3018	SSG919*F3060
HSEBXFGW541DW01	JSE907*F4350	SSE907*G3018	SSGF19*J3060
HSEF17*J2802	JSEBEFGW301EW01	SSE917*F3000	SSGX09*M3013
HSEF17*J2902	JSEBGFGW301EW01	SSE917*F4350	SSGX19*F3060
HSER17*F2802	JSG809*F3060	SSEA07*G3018	USE017*F5412
HSER17*F2902	JSG909*F3060	SSEBXFGW131DW01	USG019*F5412
HSET17*F2802	JSGBEFGW301EW01	SSEBXFGW541DW01	
HSET17*F2902	JSGBGFGW301EW01	SSEF17*J4350	
HSEX17*F2802	NSE817*F5422	SSEX07*G3018	
HSEX17*F2902	NSE917*F3022		
HSEY17*F2802	NSE917*F5422		
HSEY17*F2902	NSEBXFGW301NW22		
HSEY17*F99N2	NSG919*F3022		
HSEZ17*F2802	NSGBXFGW301NW22		
HSEZ17*F2902			

* Add Letter To Designate Color. L - Almond Q - Bisque W - White

Control Panel and Controls - Nonmetered

Models JSE807*F4350, JSG809*F3060, NSE817*F5422, SSE007*F3000, SSE007*F4350, SSE807*F3000, SSE807*F4350, SSE807*G3018, USE017*F5412 and USG019*F5412

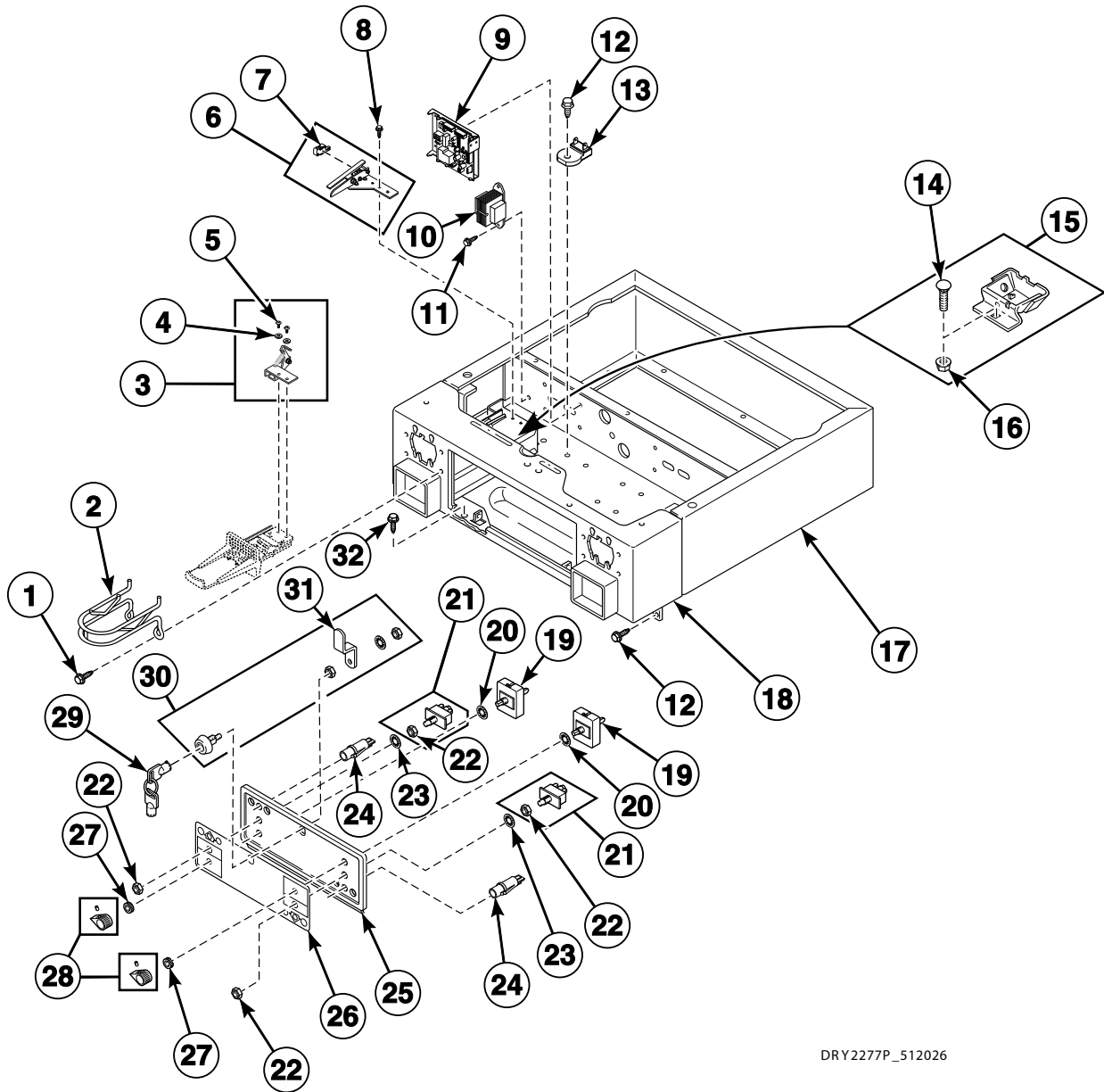


DRY2114P_512026

SSG2 P1

Control and Control Panel - Coin Slide Models

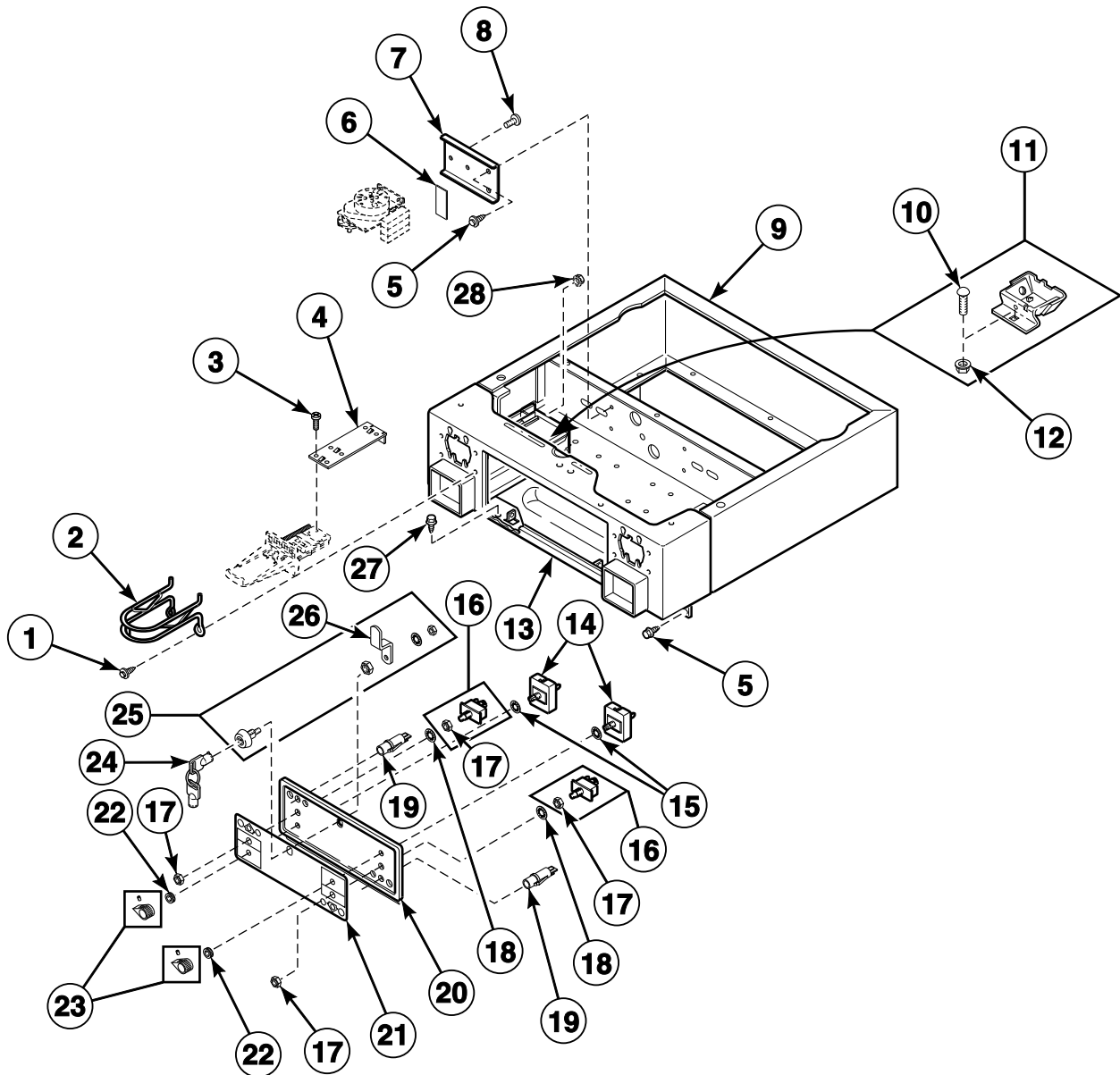
Models HSE917*F2802, HSE917*F2902, HSG919*F0902, JSE907*F4350,
JSG909*F3060, NSE917*F3022, NSE917*F5422, NSG919*F3022, SSE907*G3018,
SSE917*F3000, SSE917*F4350, SSG909*M3013, SSG919*F3028 and SSG919*F3060



DRY2277P_512026

Control Panel and Controls - Coin Slide Ready Models

Models HSE117*F2802, HSE117*F2902, HSG119*F0902, SSE107*G3018, SSE117*F3000, SSE117*F4350, SSE117*F5412, SSE117*G3018, SSG109*M3013, SSG119*F3000, SSG119*F3058, SSG119*F3060, SSG119*F5412, SSG119*F5480 and SSG119*M3013

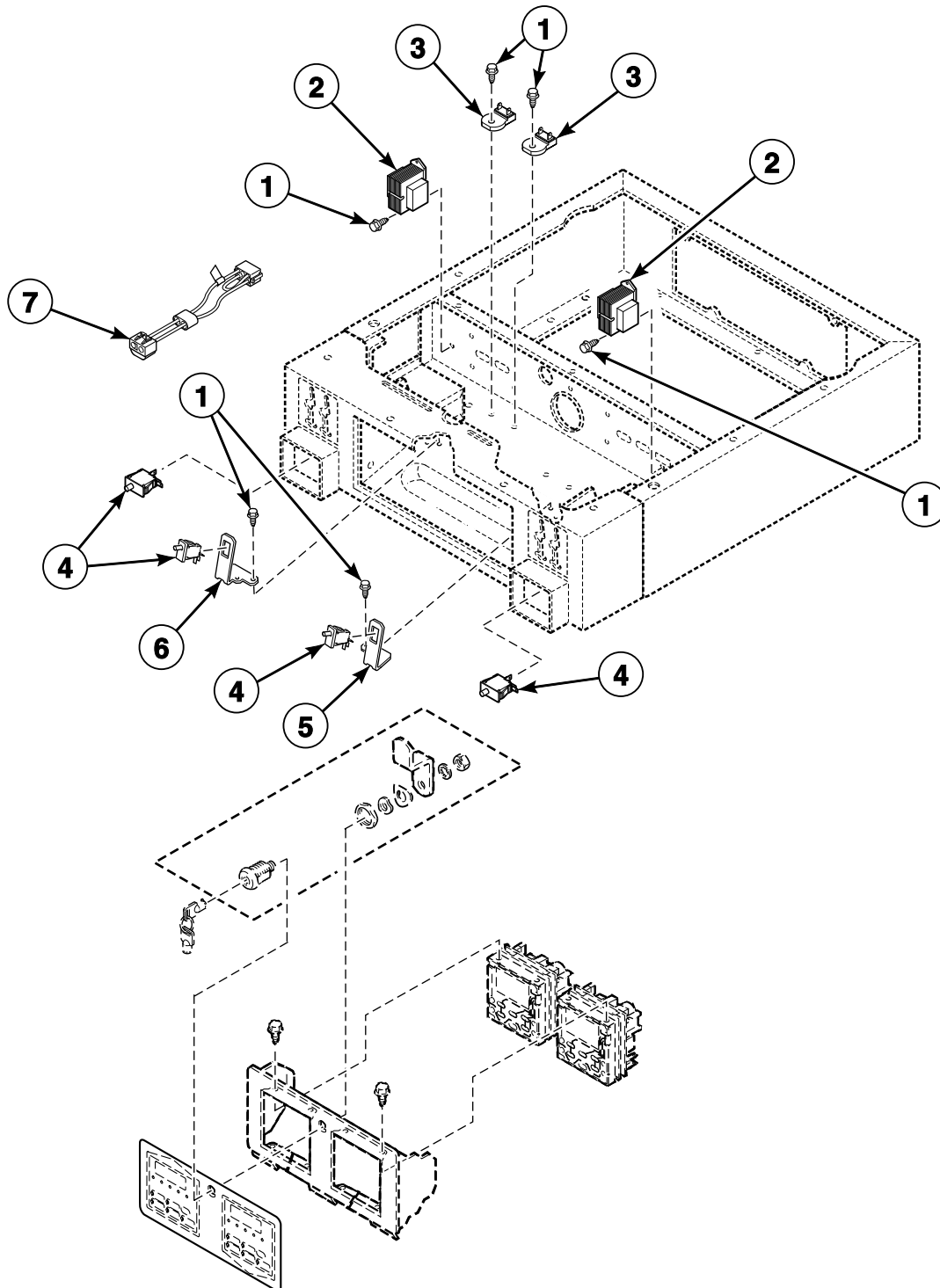


DRY2123P_512026

SSG2 P3

Control Panel and Controls - Coin Drop and Card Models (Drawing 1 of 2)

Models HSE517*F2802, HSE517*F2902, HSE717*F2802, HSE717*F2902, HSEB17*J2802, HSEB17*J2902, HSEBXFGW131DW01, HSEBXFGW171FW28, HSEBXFGW541DW01, HSEF17*J2802, HSEF17*J2902, HSER17*F2802, HSER17*F2902, HSET17*F2802, HSET17*F2902, HSEX17*F2802, HSEX17*F2902, HSEY17*F2802, HSEY17*F2902, HSEY17*F99N2, HSEZ17*F2802, HSEZ17*F2902, HSG519*F0902, HSG719*F0902, HSGB19*J0902, HSGF19*J0902, HSGR19*F0902, HSGT19*F0902, HSGX19*F0902, HSGY19*F0902, HSGZ19*F0902, JSEBEFGW301EW01, JSGBEFGW301EW01, NSEBXFGW301NW22, NSGBXFGW301NW22, SSE417*F3000, SSE417*F4350, SSEA07*G3018, SSEBXFGW131DW01, SSEBXFGW541DW01, SSEF17*J4350, SSEX07*G3018, SSG419*F3000, SSG419*F3058, SSGF19*J3060, SSGX09*M3013 and SSGX19*F3060

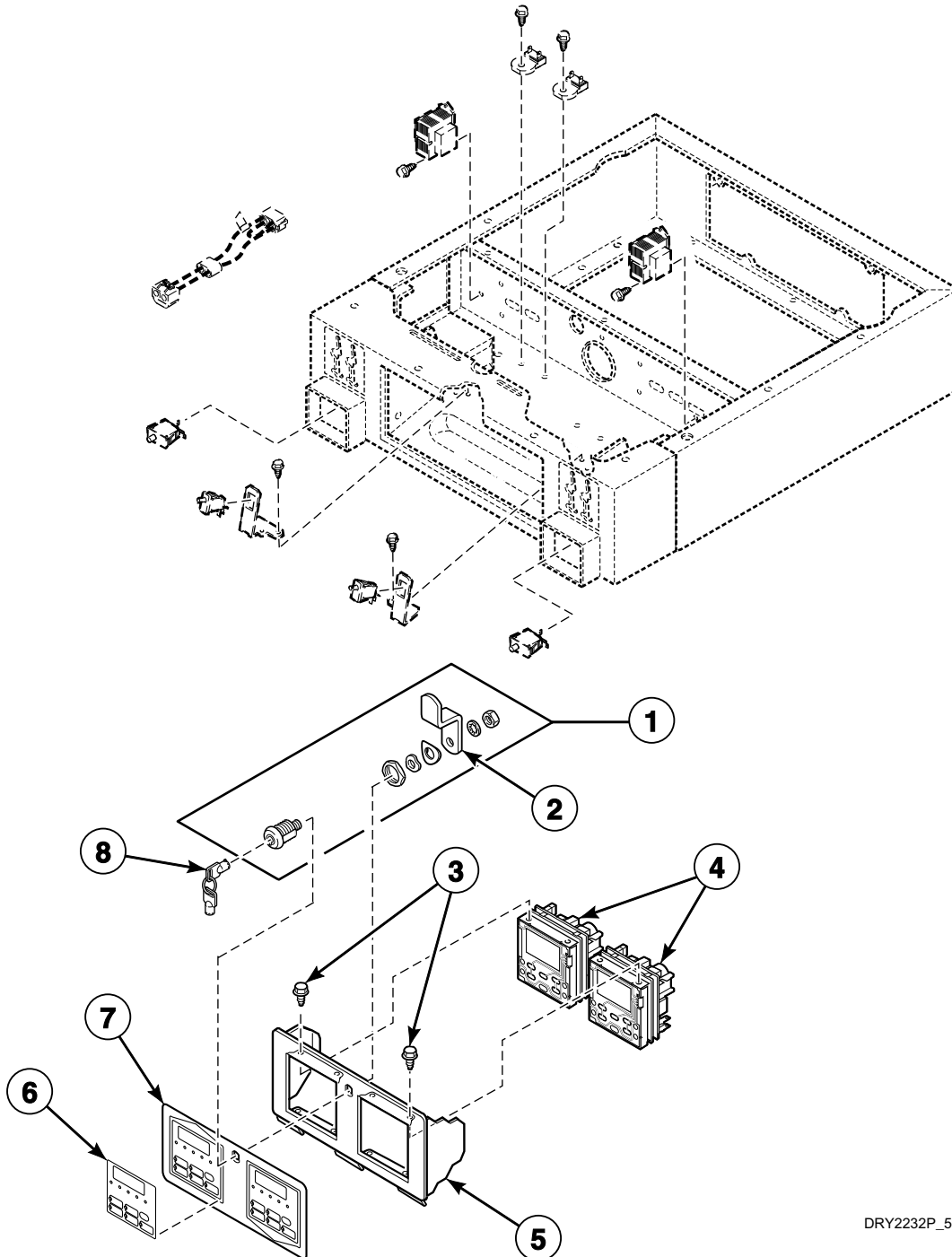


DRY2124P_512026

SSG2 P4

Control Panel and Controls - Coin Drop and Card Models (Drawing 2 of 2)

Models HSE517*F2802, HSE517*F2902, HSE717*F2802, HSE717*F2902, HSEB17*J2802, HSEB17*J2902, HSEBXFGW131DW01, HSEBXFGW171FW28, HSEBXFGW541DW01, HSEF17*J2802, HSEF17*J2902, HSER17*F2802, HSER17*F2902, HSET17*F2802, HSET17*F2902, HSEX17*F2802, HSEX17*F2902, HSEY17*F2802, HSEY17*F2902, HSEY17*F99N2, HSEZ17*F2802, HSEZ17*F2902, HSG519*F0902, HSG719*F0902, HSGB19*J0902, HSGF19*J0902, HSGR19*F0902, HSGT19*F0902, HSGX19*F0902, HSGY19*F0902, HSGZ19*F0902, JSEBEFGW301EW01, JSGBEFGW301EW01, NSEBXFGW301NW22, NSGBXFGW301NW22, SSE417*F3000, SSE417*F4350, SSEA07*G3018, SSEBXFGW131DW01, SSEBXFGW541DW01, SSEF17*J4350, SSEX07*G3018, SSG419*F3000, SSG419*F3058, SSGF19*J3060, SSGX09*M3013 and SSGX19*F3060

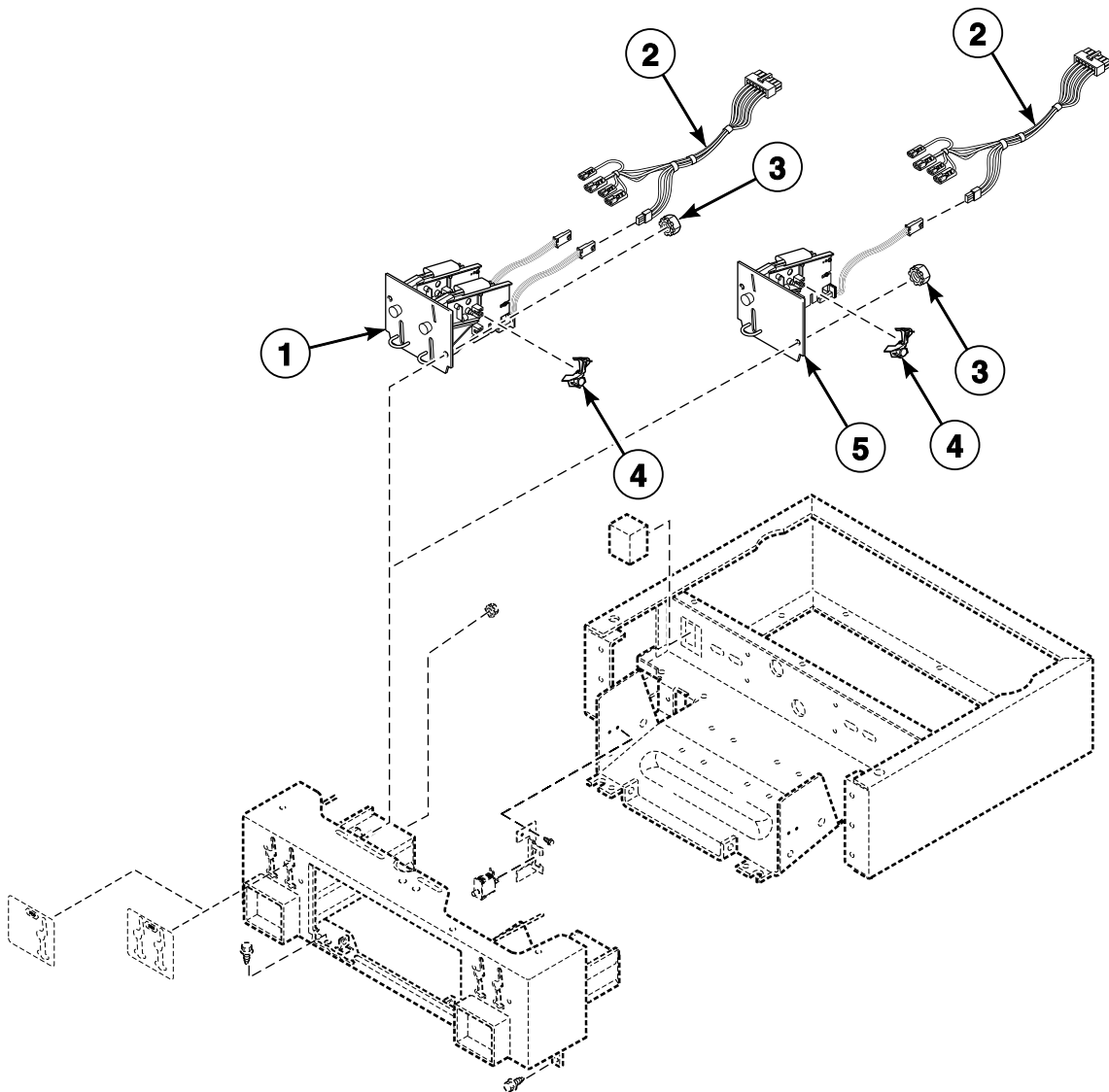


DRY2232P_512026

SSG2 P5

Non-Electronic Coin Drop - Coin Drop Models

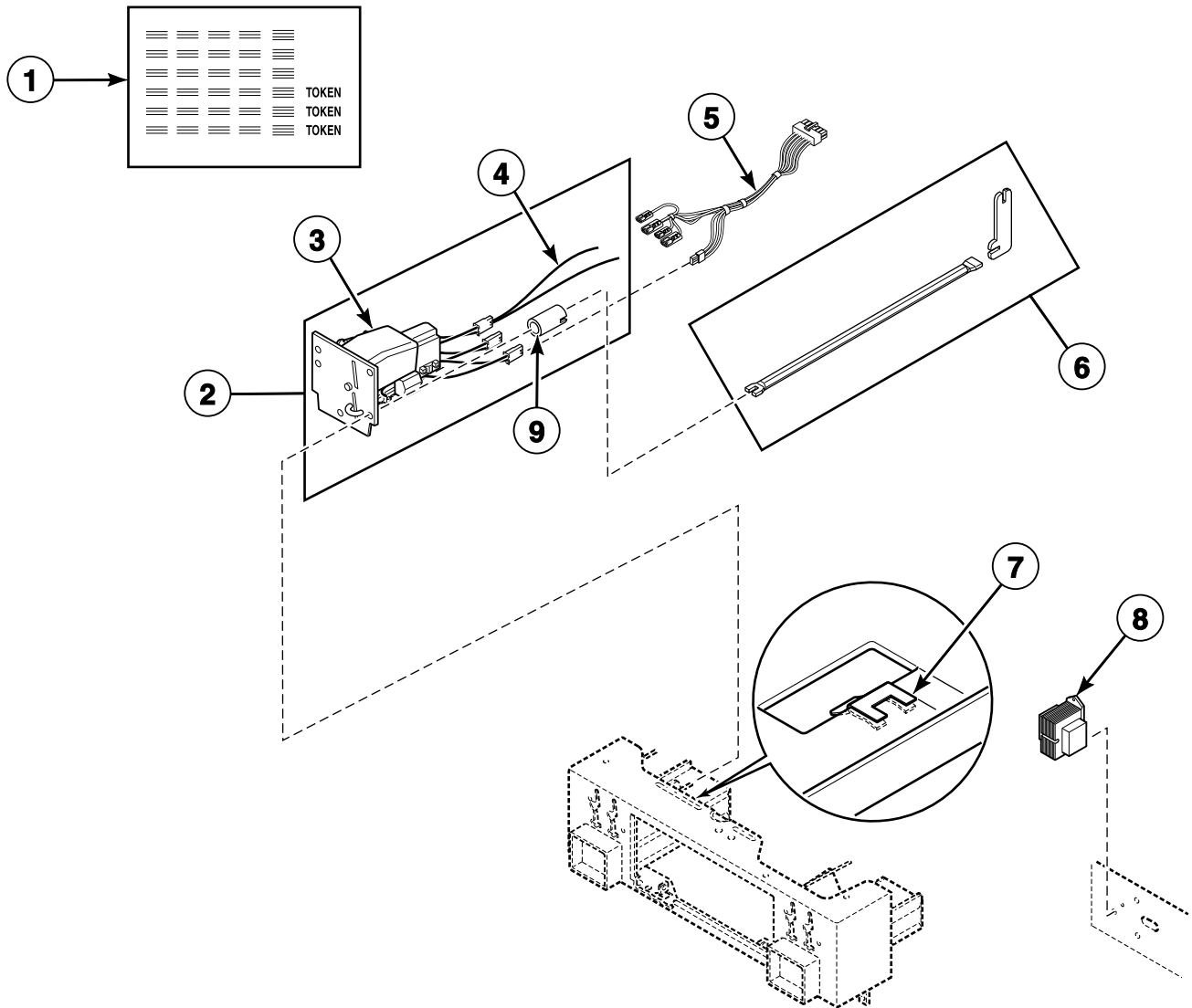
Models HSE517*F2802, HSE517*F2902, HSEB17*J2802, HSEB17*J2902, HSEBXFGW131DW01, HSEBXFGW171FW28, HSEBXFGW541DW01, HSER17*F2802, HSER17*F2902, HSET17*F2802, HSET17*F2902, HSEX17*F2802, HSEX17*F2902, HSEZ17*F2802, HSEZ17*F2902, HSG519*F0902, HSGB19*J0902, HSGR19*F0902, HSGT19*F0902, HSGX19*F0902, HSGZ19*F0902, JSEBFGW301EW01, JSGBFGW301EW01, NSEBXFGW301NW22, NSGBXFGW301NW22, SSE417*F3000, SSE417*F4350, SSEA07*G3018, SSEBXFGW131DW01, SSEBXFGW541DW01, SSEX07*G3018, SSG419*F3000, SSG419*F3058, SSGX09*M3013 and SSGX19*F3060



DRY2117P_512026

Electronic Coin Drop - Coin Drop Models

Models HSEB17*J2802, HSEB17*J2902, HSEBXFGW131DW01, HSEBXFGW171FW28, HSEBXFGW541DW01, HSER17*F2802, HSER17*F2902, HSET17*F2802, HSET17*F2902, HSEX17*F2802, HSEX17*F2902, HSEZ17*F2802, HSEZ17*F2902, HSGB19*J0902, HSGR19*F0902, HSGT19*F0902, HSGX19*F0902, HSGZ19*F0902, JSEBEFGW301EW01, JSGBEFGW301EW01, NSEBXFGW301NW22, NSGBXFGW301NW22, SSEA07*G3018, SSEBXFGW131DW01, SSEBXFGW541DW01, SSEX07*G3018, SSGX09*M3013 and SSGX19*F3060

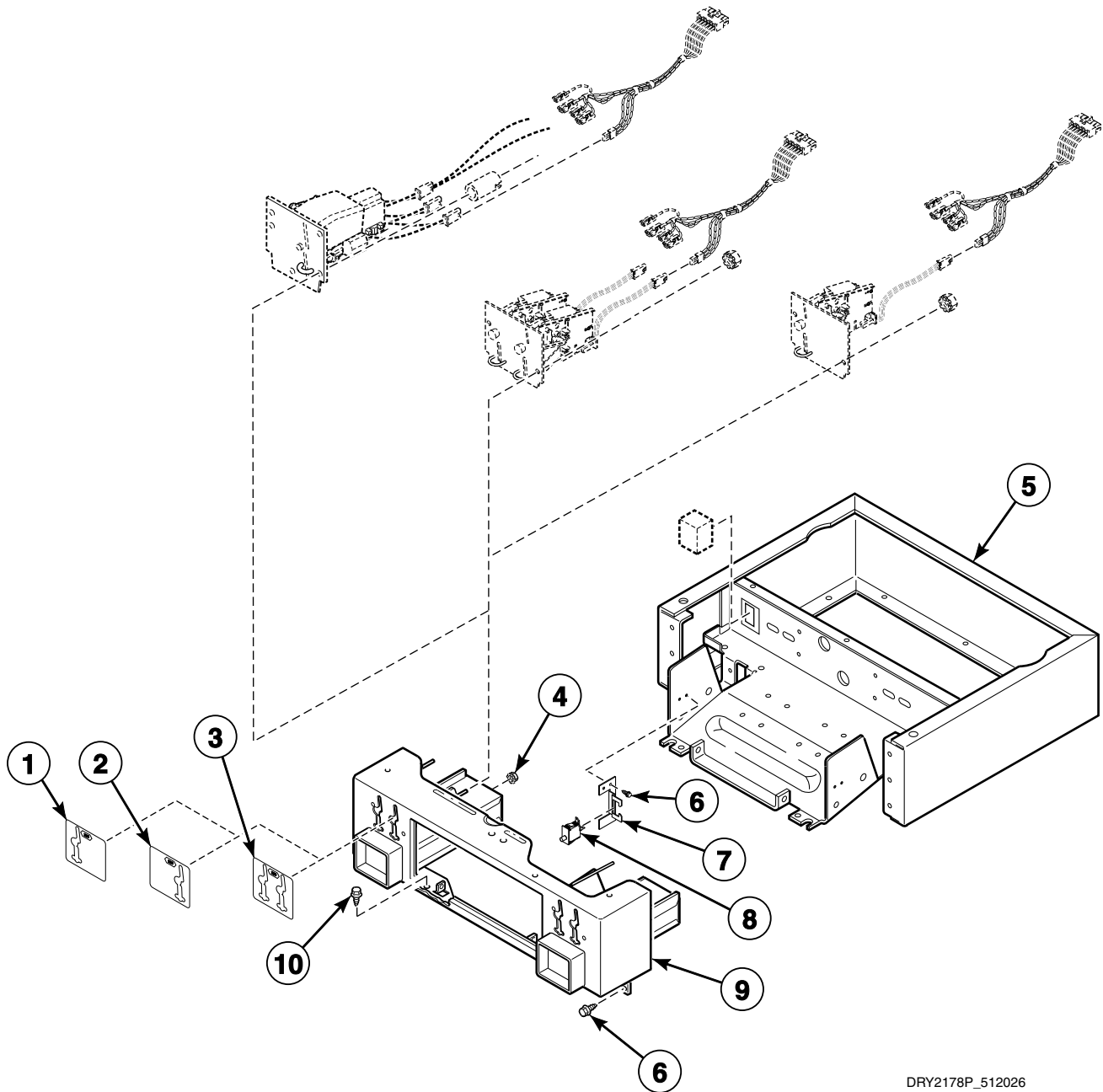


DRY2177P_512026

SSG2 P7

Control Cabinet Controls - Coin Drop Models

Models HSE517*F2802, HSE517*F2902, HSEB17*J2802, HSEB17*J2902, HSEBXFGW131DW01, HSEBXFGW171FW28, HSEBXFGW541DW01, HSER17*F2802, HSER17*F2902, HSET17*F2802, HSET17*F2902, HSEX17*F2802, HSEX17*F2902, HSEZ17*F2802, HSEZ17*F2902, HSG519*F0902, HSGB19*J0902, HSGR19*F0902, HSGT19*F0902, HSGX19*F0902, HSGZ19*F0902, JSEBFGW301EW01, JSGBFGW301EW01, NSEBXFGW301NW22, NSGBXFGW301NW22, SSE417*F3000, SSE417*F4350, SSEA07*G3018, SSEBXFGW131DW01, SSEBXFGW541DW01, SSEX07*G3018, SSG419*F3000, SSG419*F3058, SSGX09*M3013 and SSGX19*F3060

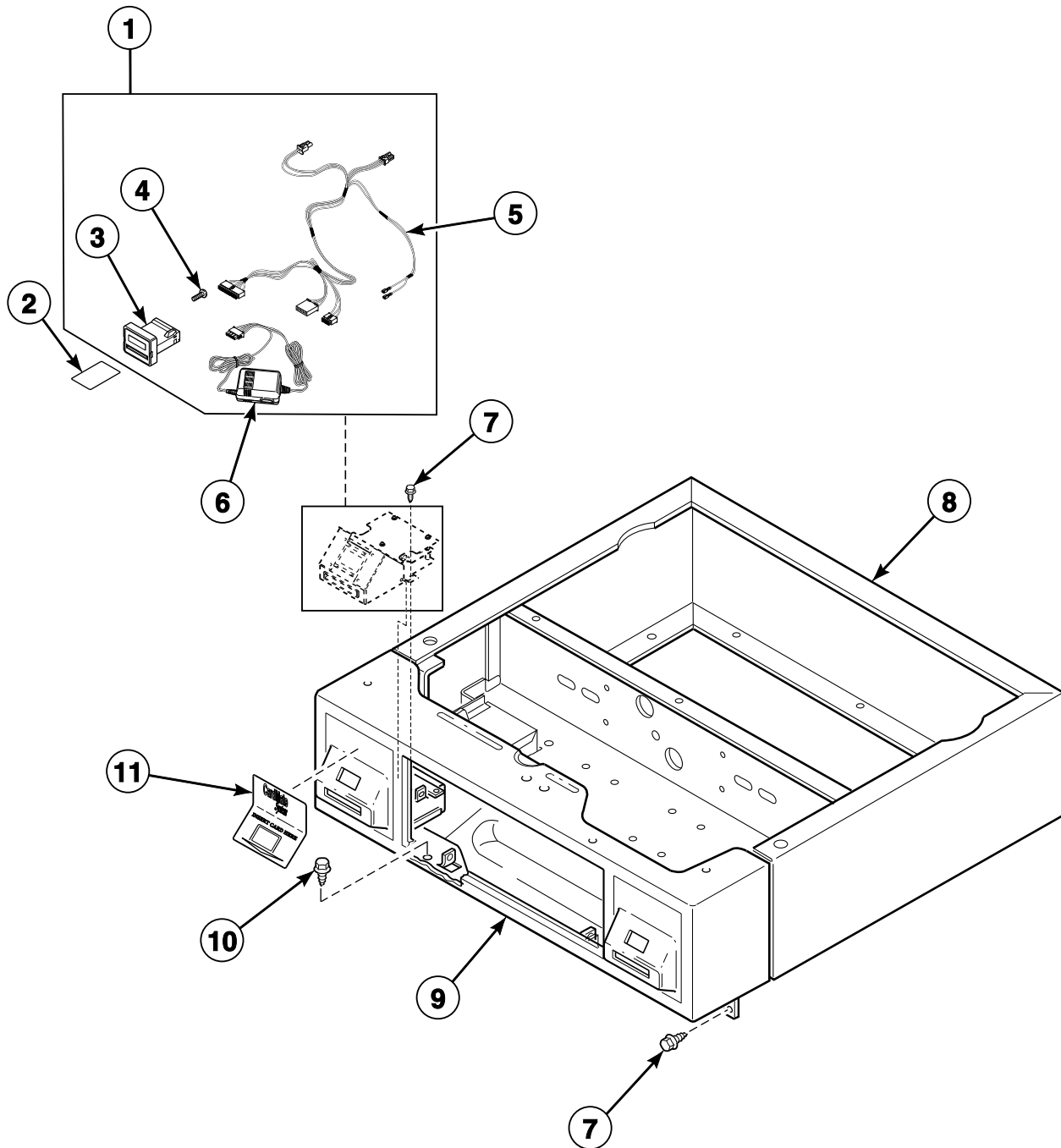


DRY2178P_512026

SSG2 P8

Card Reader - Card Reader Ready and Installed Models

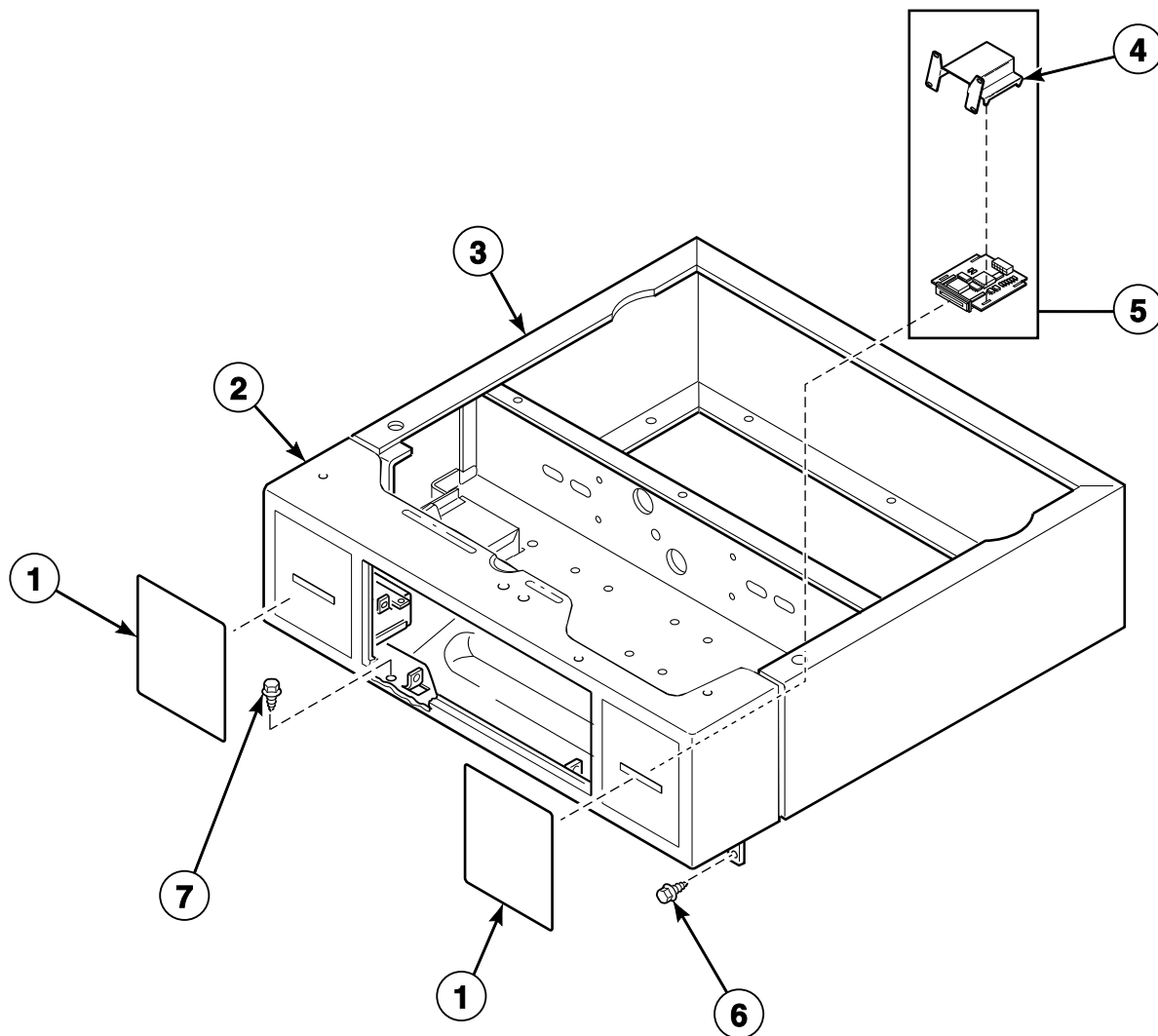
Models HSE717*F2802, HSE717*F2902 and HSG719*F0902



DRY2020P_512026

Integrated Card Reader Installed and Ready - All Netmaster Integrated Card Reader Models

Models HSEF17*J2802, HSEF17*J2902, HSEY17*F2802, HSEY17*F2902,
HSEY17*F99N2, HSGF19*J0902, HSGY19*F0902, SSEF17*J4350 and SSGF19*J3060

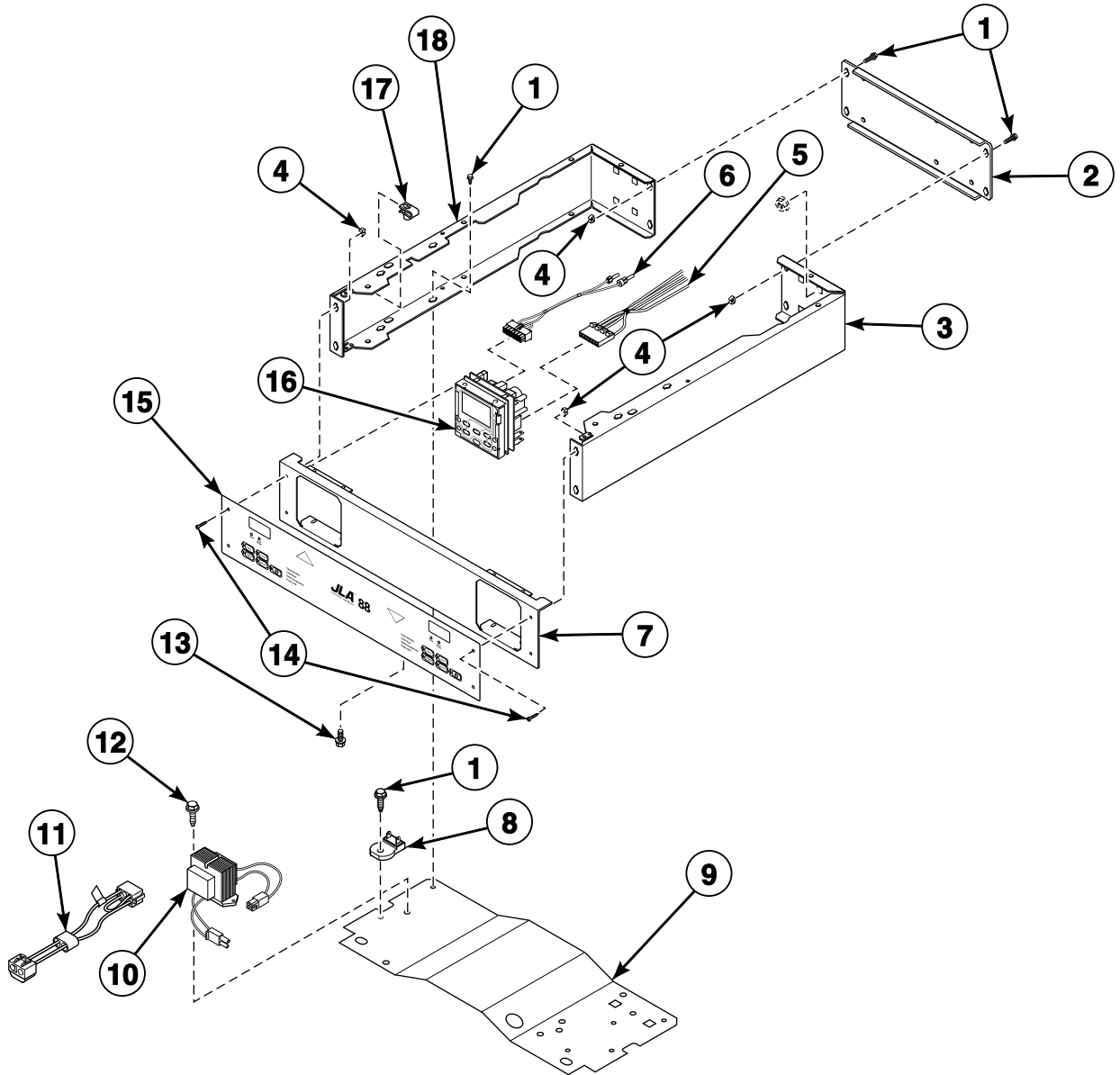


DRY1761P_512026

SSG2 P10

Control Cabinet - Non-Vend Models

Models JSEBGF301EW01 and JSGBGF301EW01

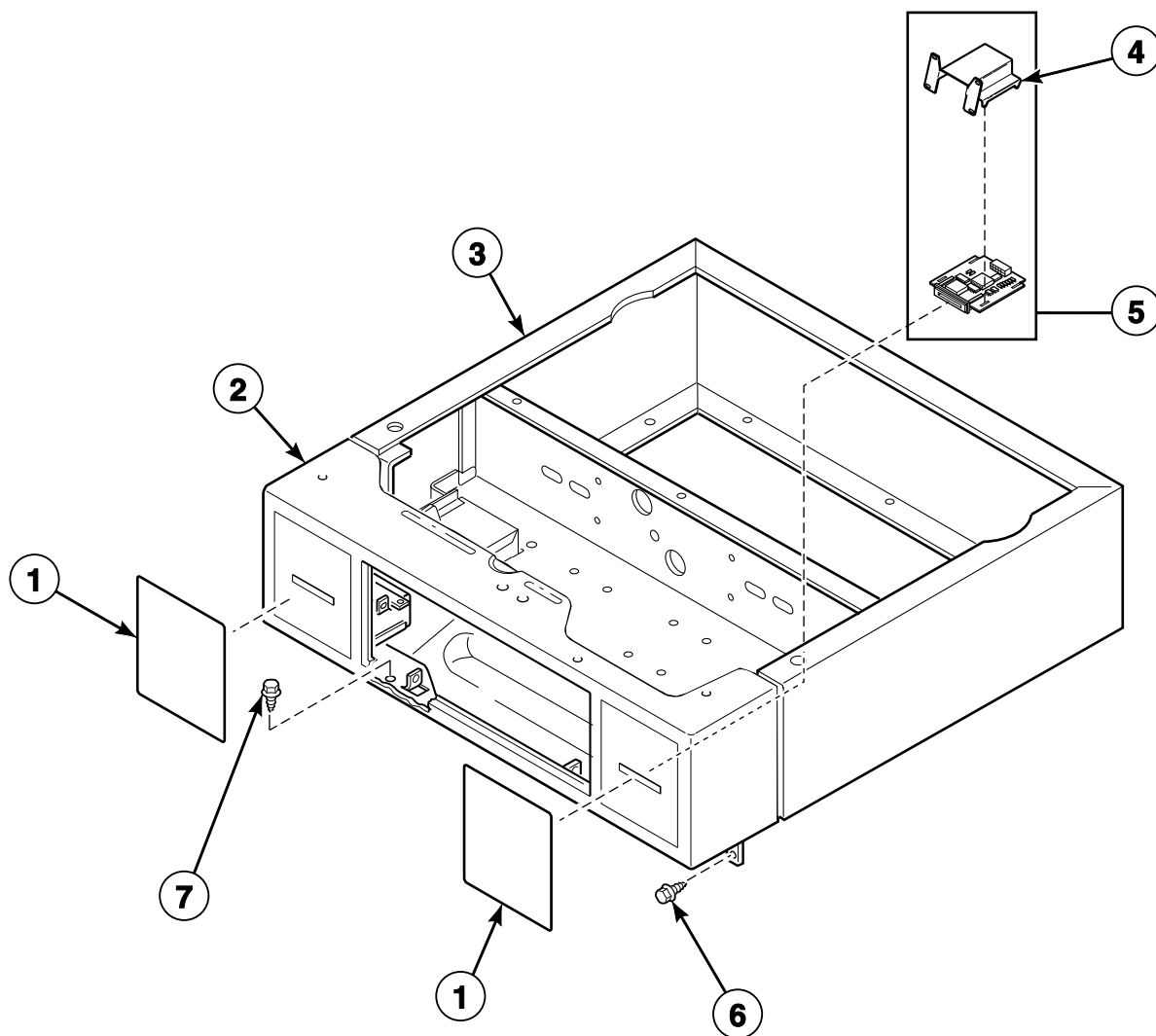


DRY2234P_512026

SSG2 P11

Integrated Card Reader Installed and Ready - All Netmaster Integrated Card Reader Models

Models HSEF17*J2802, HSEF17*J2902, HSEY17*F2802, HSEY17*F2902,
HSEY17*F99N2, HSGF19*J0902, HSGY19*F0902, SSEF17*J4350 and SSGF19*J3060

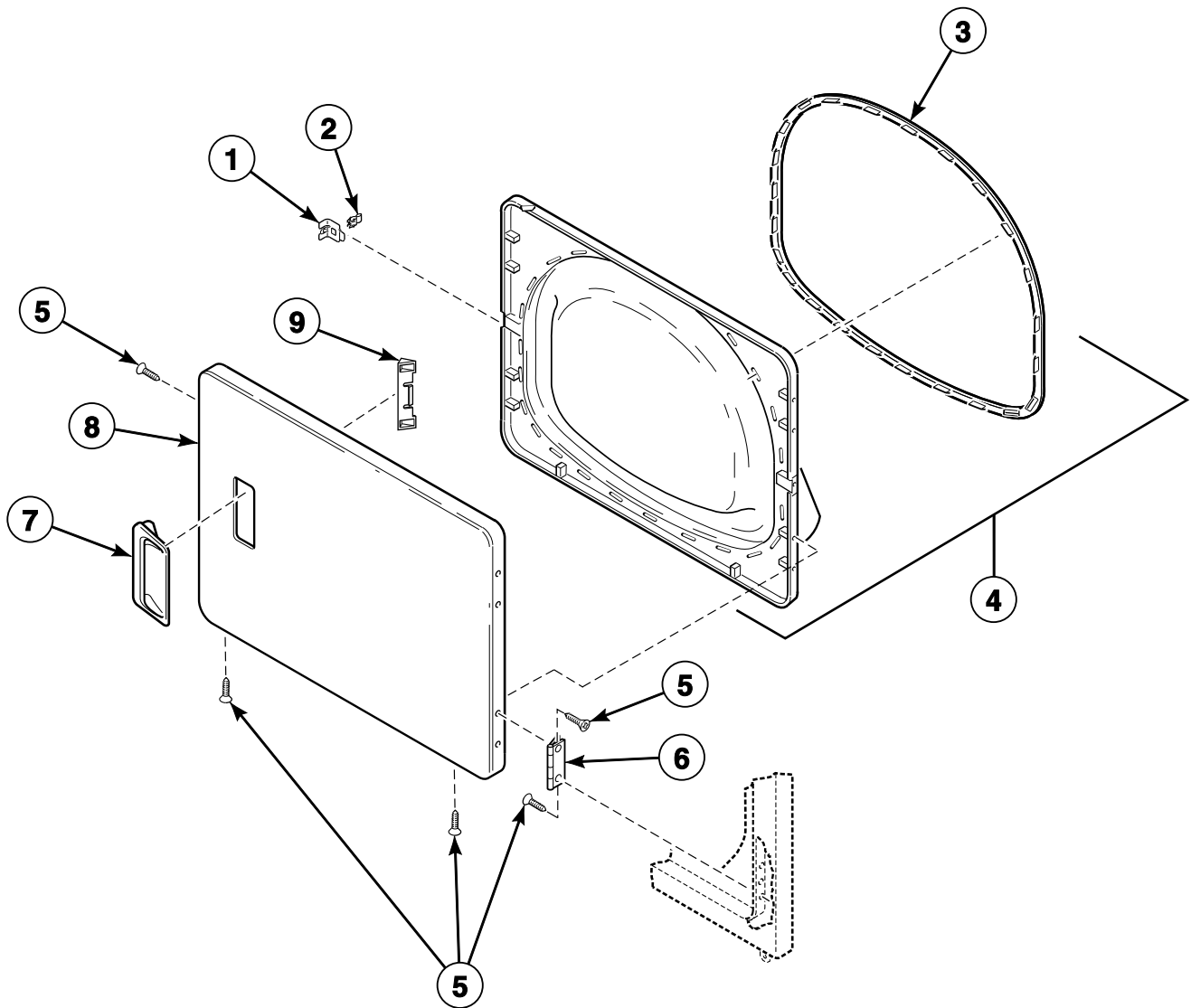


DRY1761P_512026

SSG2 P12

Loading Door without Window

Models HSEBXFGW131DW01, HSEBXFGW541DW01, JSE807*F4350, JSE907*F4350, JSG809*F3060, JSG909*F3060, SSE007*F3000, SSE007*F4350, SSE107*G3018, SSE807*F3000, SSE807*F4350, SSE807*G3018, SSE907*G3018, SSEA07*G3018, SSEBXFGW131DW01, SSEBXFGW541DW01, SSEX07*G3018, SSG109*M3013, SSG909*M3013 and SSGX09*M3013

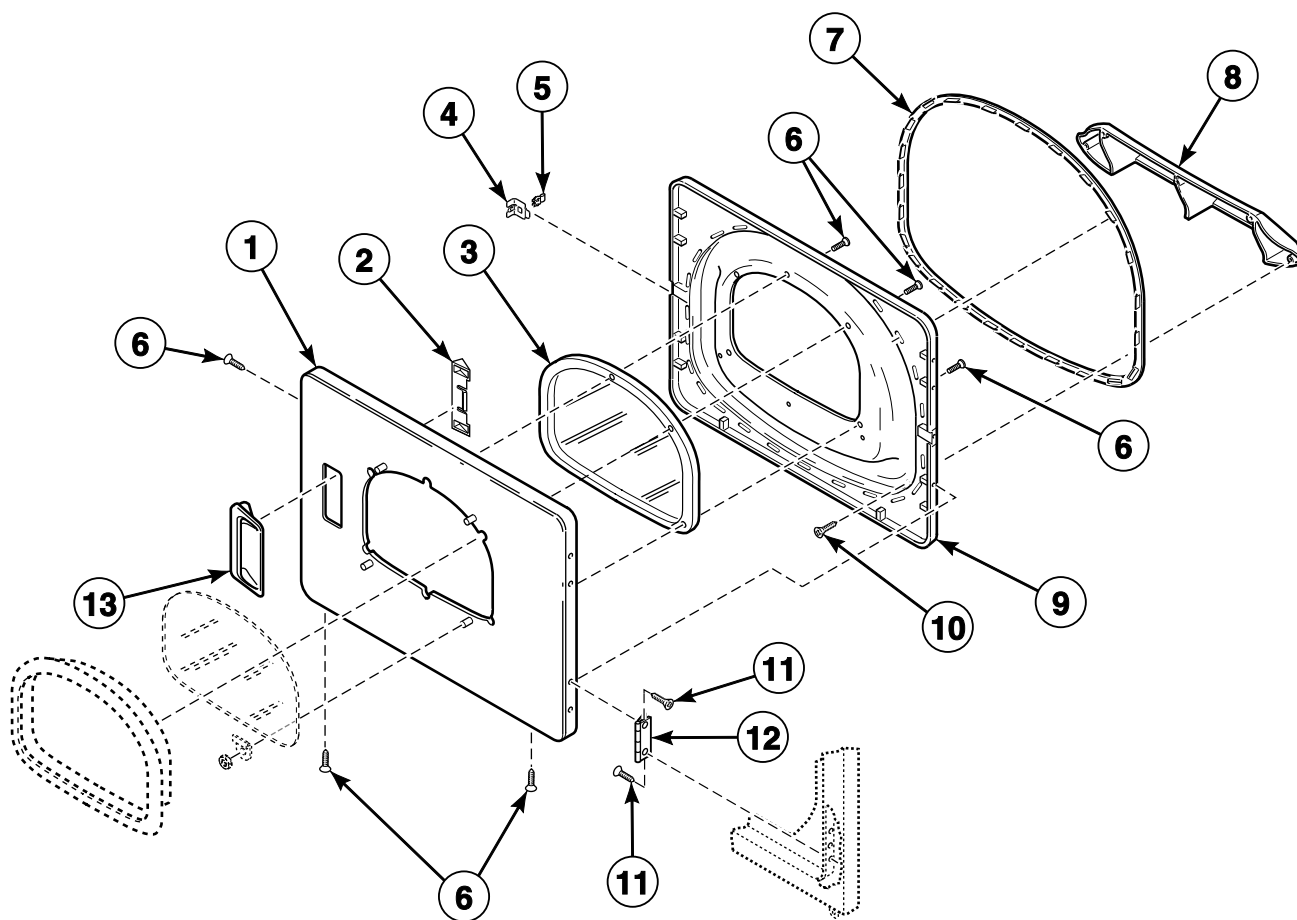


DRY1775P_512026

SSG2 P13

Loading Door with Window (Drawing 1 of 2)

Models HSE117*F2802, HSE117*F2902, HSE517*F2802, HSE517*F2902, HSE717*F2802, HSE717*F2902, HSE917*F2802, HSE917*F2902, HSEB17*J2802, HSEB17*J2902, HSEBXFGW171FW28, HSEF17*J2802, HSEF17*J2902, HSER17*F2802, HSER17*F2902, HSET17*F2802, HSET17*F2902, HSEX17*F2802, HSEX17*F2902, HSEY17*F2802, HSEY17*F2902, HSEY17*F99N2, HSEZ17*F2802, HSEZ17*F2902, HSG119*F0902, HSG519*F0902, HSG719*F0902, HSG919*F0902, HSGB19*J0902, HSGF19*J0902, HSGR19*F0902, HSGT19*F0902, HSGX19*F0902, HSGY19*F0902, HSGZ19*F0902, JSEBEFGW301EW01, JSEBGF301EW01, JSGBEFGW301EW01, JSGBGF301EW01, NSE817*F5422, NSE917*F3022, NSE917*F5422, NSEBXFGW301NW22, NSG919*F3022, NSGBXFGW301NW22, SSE117*F3000, SSE117*F4350, SSE117*F5412, SSE117*G3018, SSE417*F3000, SSE417*F4350, SSE917*F3000, SSE917*F4350, SSEF17*J4350, SSG119*F3000, SSG119*F3058, SSG119*F3060, SSG119*F5412, SSG119*F5480, SSG119*M3013, SSG419*F3000, SSG419*F3058, SSG919*F3028, SSG919*F3060, SSGF19*J3060, SSGX19*F3060, USE017*F5412 and USG019*F5412

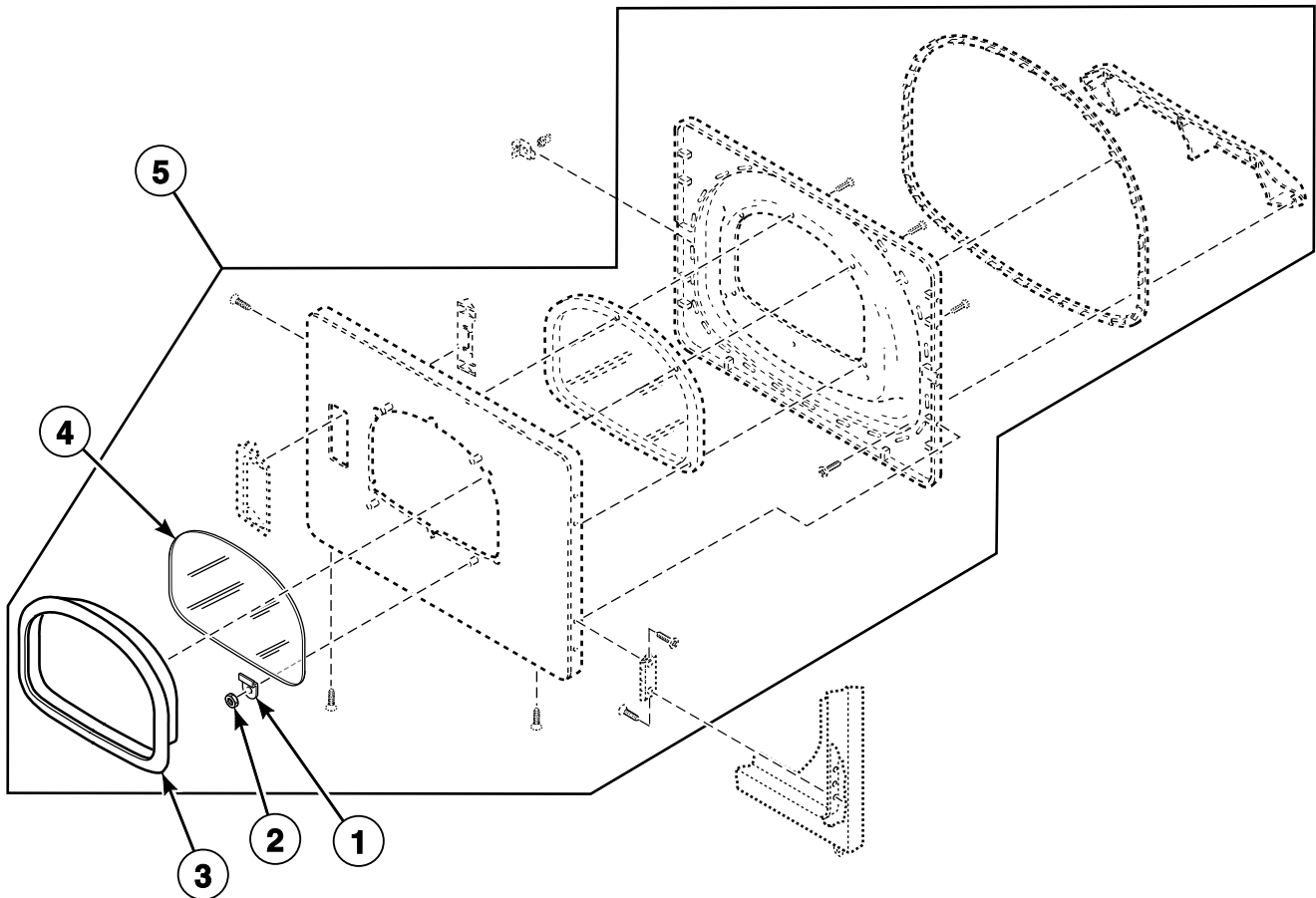


DRY2296P_512026

SSG2 P14

Loading Door with Window (Drawing 2 of 2)

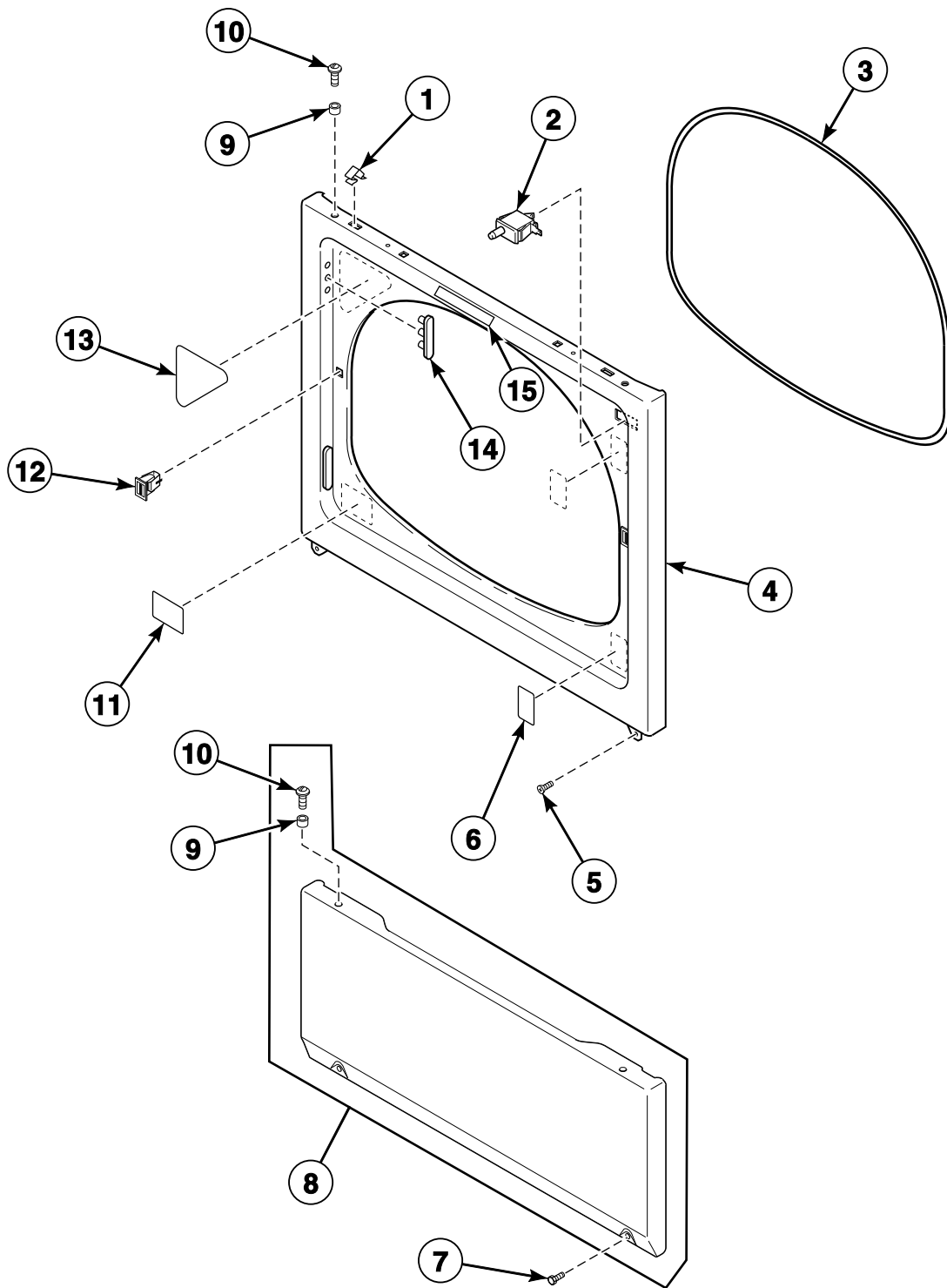
Models HSE117*F2802, HSE117*F2902, HSE517*F2802, HSE517*F2902, HSE717*F2802, HSE717*F2902, HSE917*F2802, HSE917*F2902, HSEB17*J2802, HSEB17*J2902, HSEBXFGW171FW28, HSEF17*J2802, HSEF17*J2902, HSER17*F2802, HSER17*F2902, HSET17*F2802, HSET17*F2902, HSEX17*F2802, HSEX17*F2902, HSEY17*F2802, HSEY17*F2902, HSEY17*F99N2, HSEZ17*F2802, HSEZ17*F2902, HSG119*F0902, HSG519*F0902, HSG719*F0902, HSG919*F0902, HSGB19*J0902, HSGF19*J0902, HSGR19*F0902, HSGT19*F0902, HSGX19*F0902, HSGY19*F0902, HSGZ19*F0902, JSEBEFGW301EW01, JSEBGF301EW01, JSGBEFGW301EW01, JSGBGF301EW01, NSE817*F5422, NSE917*F3022, NSE917*F5422, NSEBXFGW301NW22, NSG919*F3022, NSGBXFGW301NW22, SSE117*F3000, SSE117*F4350, SSE117*F5412, SSE117*G3018, SSE417*F3000, SSE417*F4350, SSE917*F3000, SSE917*F4350, SSEF17*J4350, SSG119*F3000, SSG119*F3058, SSG119*F3060, SSG119*F5412, SSG119*F5480, SSG119*M3013, SSG419*F3000, SSG419*F3058, SSG919*F3028, SSG919*F3060, SSGF19*J3060, SSGX19*F3060, USE017*F5412 and USG019*F5412



DRY2296PA_512026

SSG2 P15

Access Panel, Front Panel and Seal

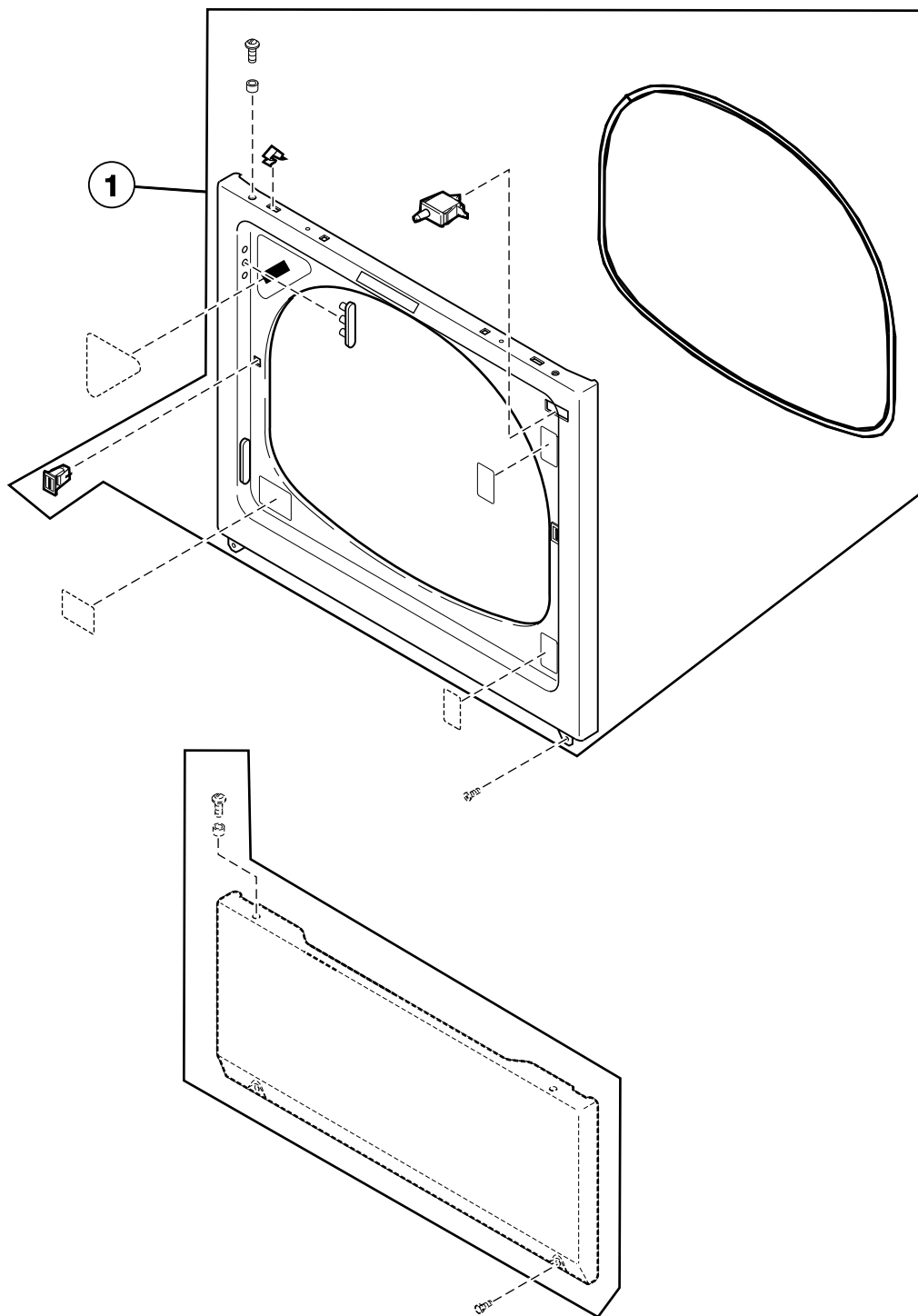


DRY2179P_512026

SSG2 P16

Front Panel Assembly

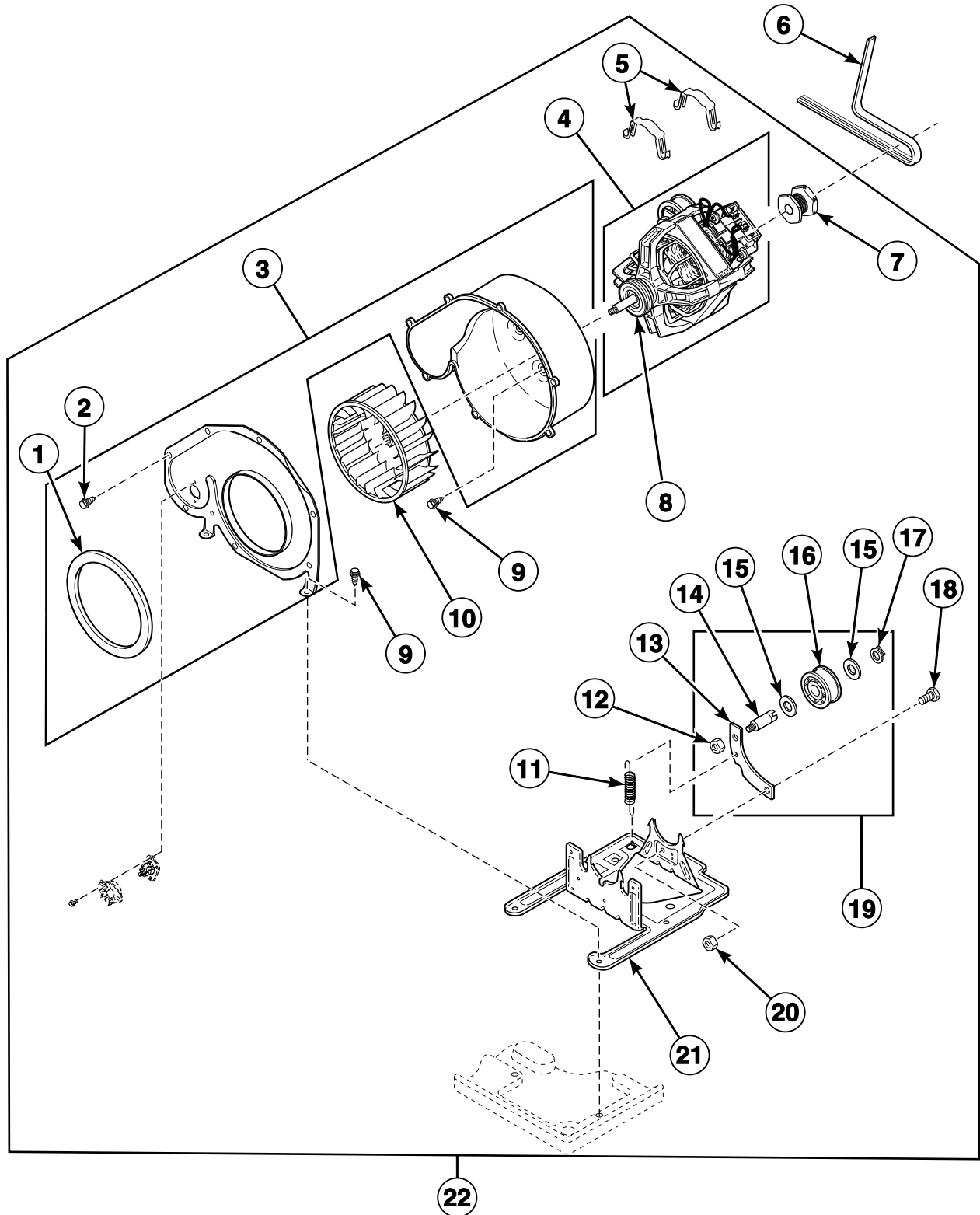
All Models Except JSE807*F4350, JSE907*F4350, JSG809*F3060, JSG909*F3060, SSE007*F3000, SSE007*F4350, SSE107*G3018, SSE807*F3000, SSE807*F4350, SSE807*G3018, SSE907*G3018, SSEA07*G3018, SSEX07*G3018, SSG109*M3013, SSG909*M3013 and SSGX09*M3013



DRY2179PA_512026

SSG2 P17

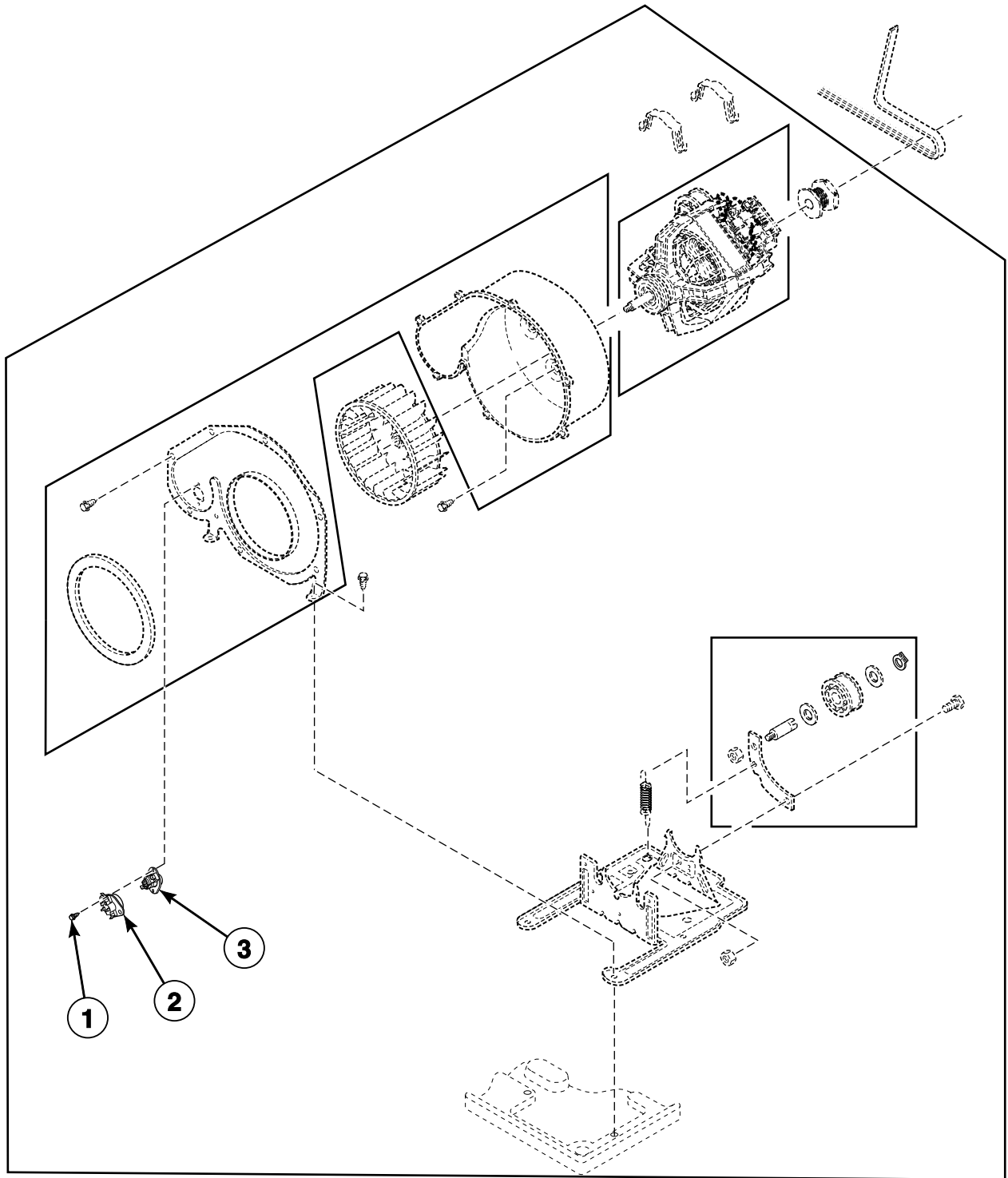
Motor, Exhaust Fan and Belt



DRY2077P_512026

SSG2 P18

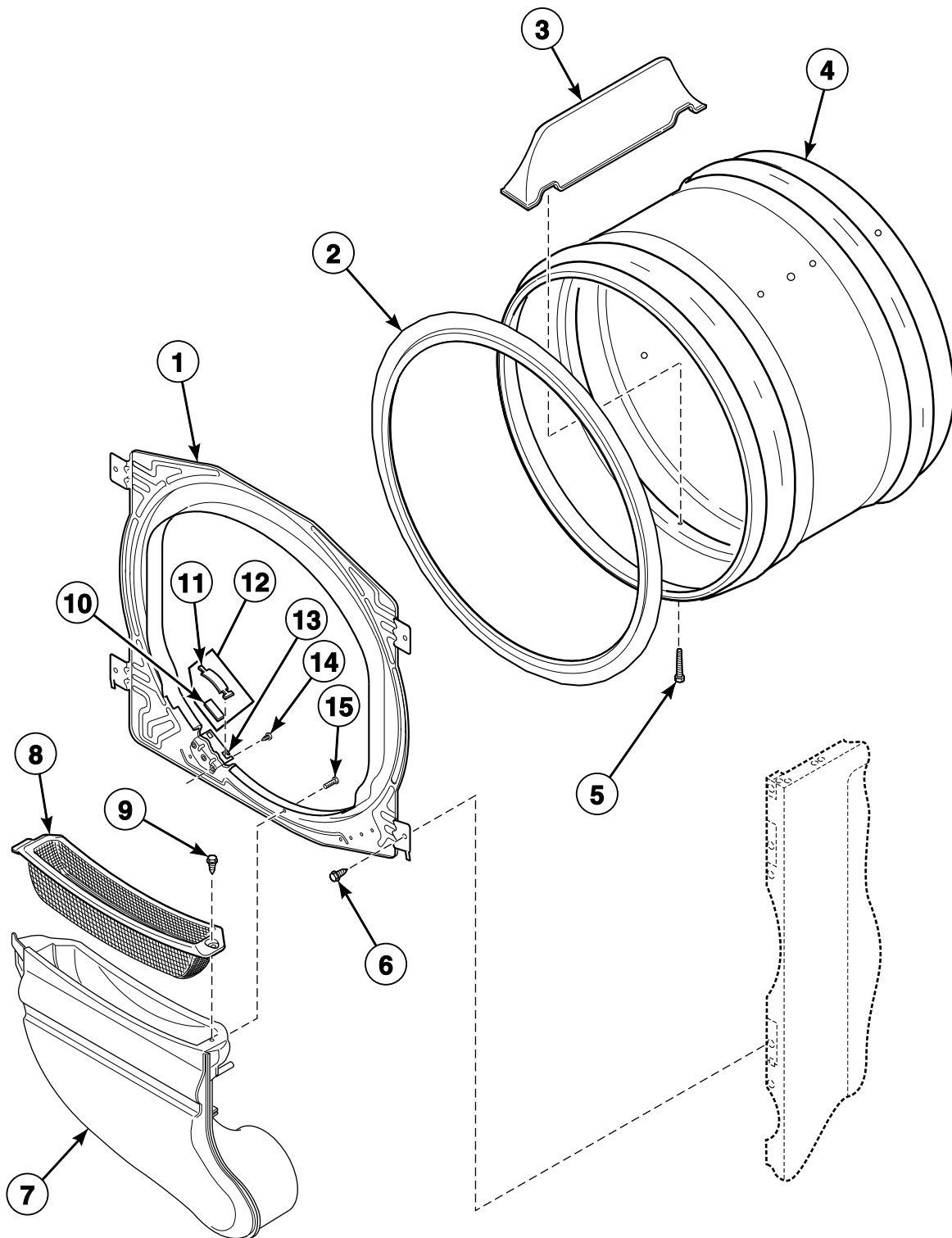
Thermostat and Thermistor



DRY2077PA_512026

SSG2 P19

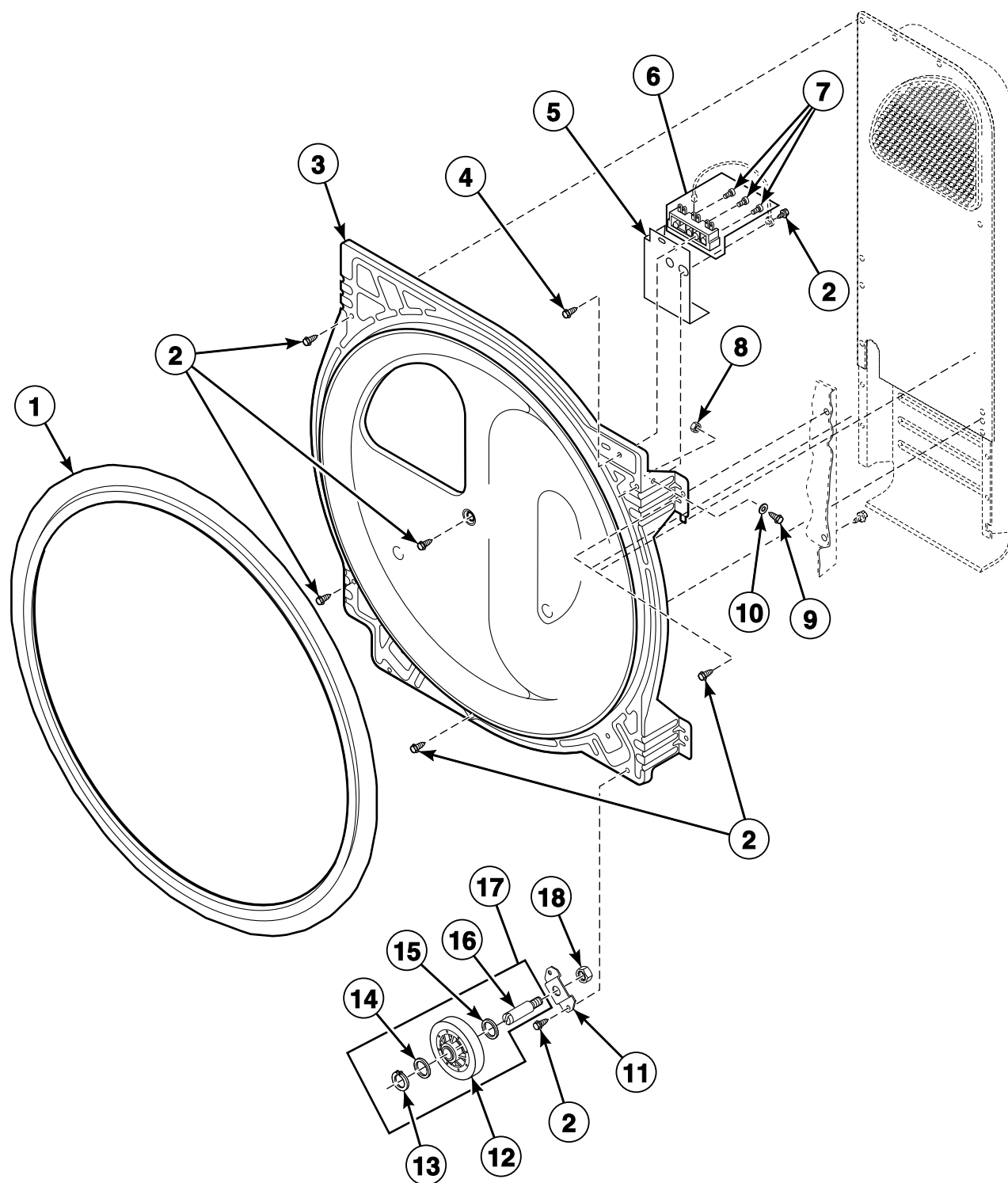
Front Bulkhead, Airduct, Felt Seal and Cylinder



D402P_512026

SSG2 P20

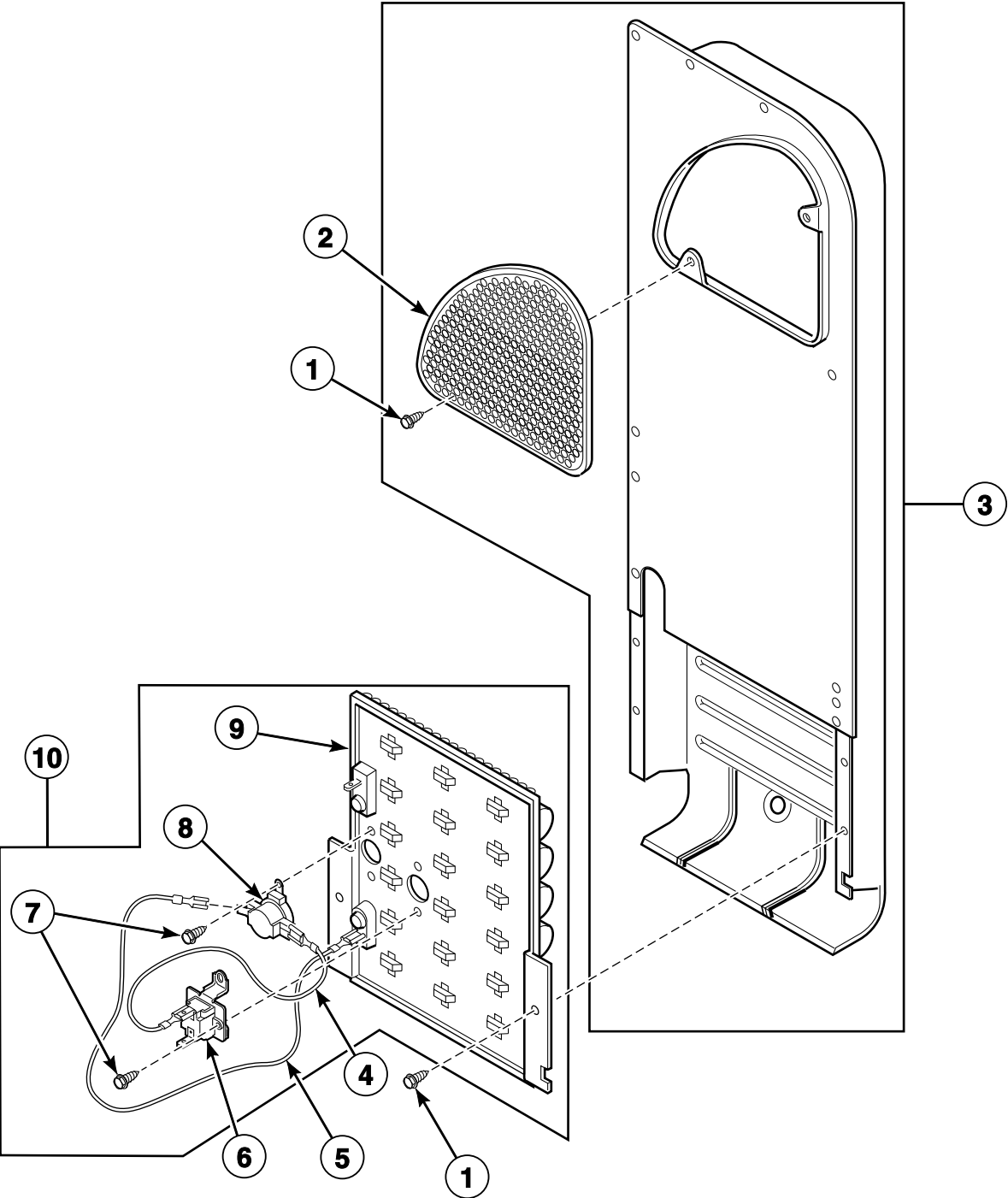
Rear Bulkhead, Felt Seal, Cylinder Roller and Terminal Block



DRY1774P_512026

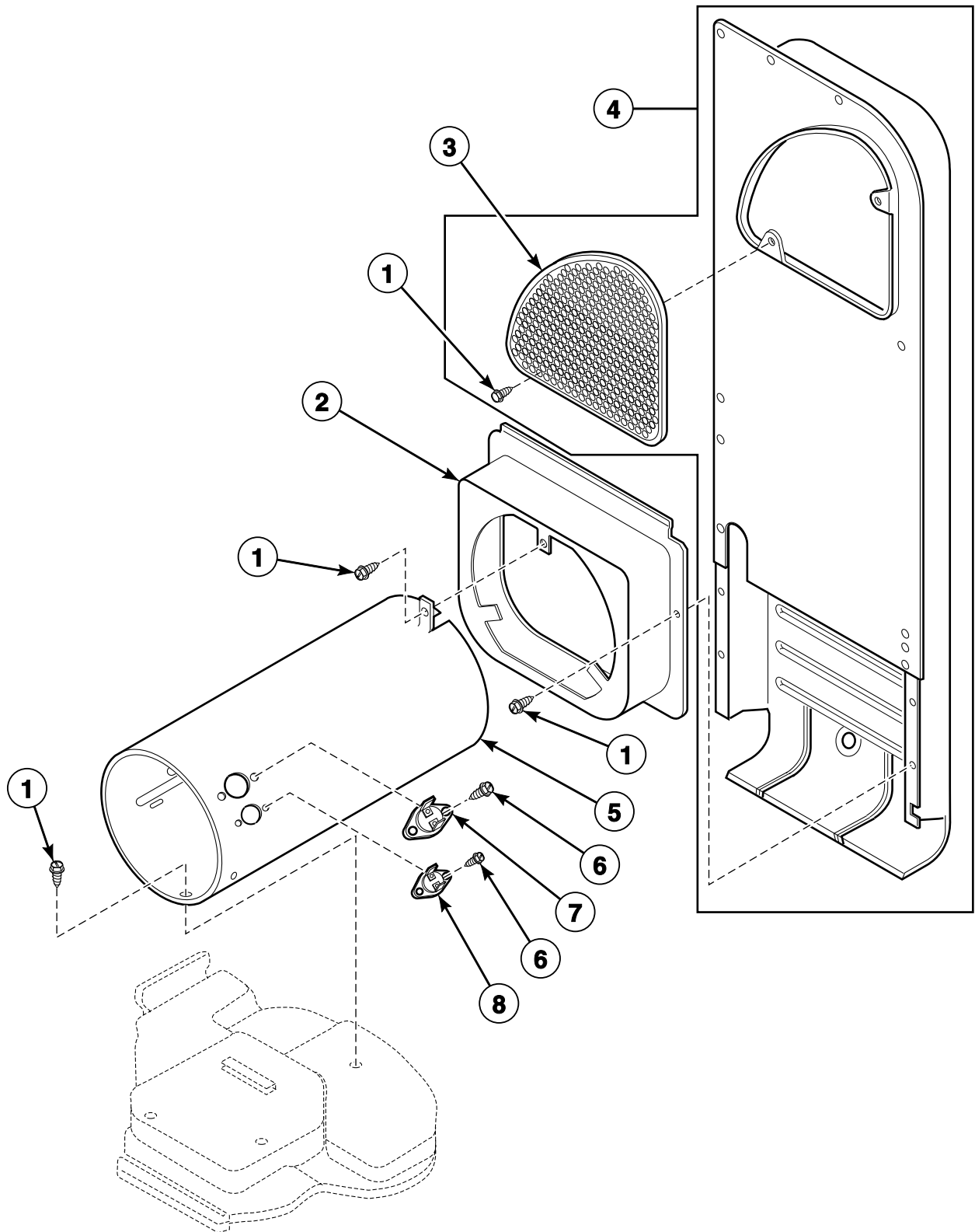
SSG2 P21

Heater Duct and Element Assembly - Electric Model Dryers



DRY1789P_512026

Heater Duct Assembly - Gas Model Dryers

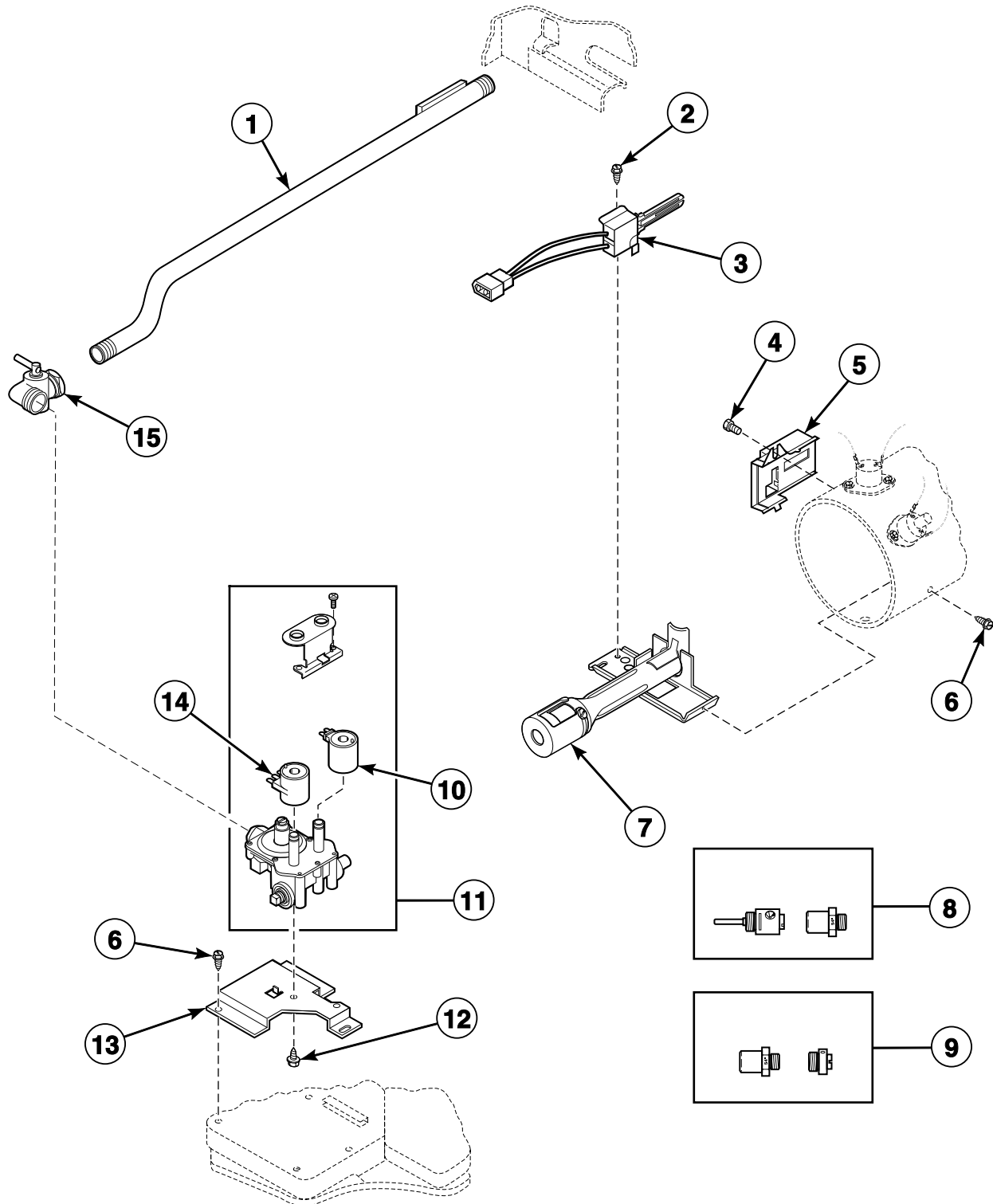


D405P_512026

SSG2 P23

Gas Valve, Igniter and Gas Conversion Kits

Models HSG119*F0902, HSG519*F0902, HSG719*F0902, HSG919*F0902, HSG19*J0902, HSGF19*J0902, HSGR19*F0902, HSGT19*F0902, HSGX19*F0902, HSGY19*F0902, HSGZ19*F0902, JSG809*F3060, JSG909*F3060, JSGBEFGW301EW01, JSGBGFGW301EW01, NSG919*F3022, NSGBXFGW301NW22, SSG109*M3013, SSG119*F3000, SSG119*F3060, SSG119*F5412, SSG119*F5480, SSG119*M3013, SSG419*F3000, SSG909*M3013, SSG919*F3028, SSG919*F3060, SSGF19*J3060, SSGX09*M3013, SSGX19*F3060 and USG019*F5412

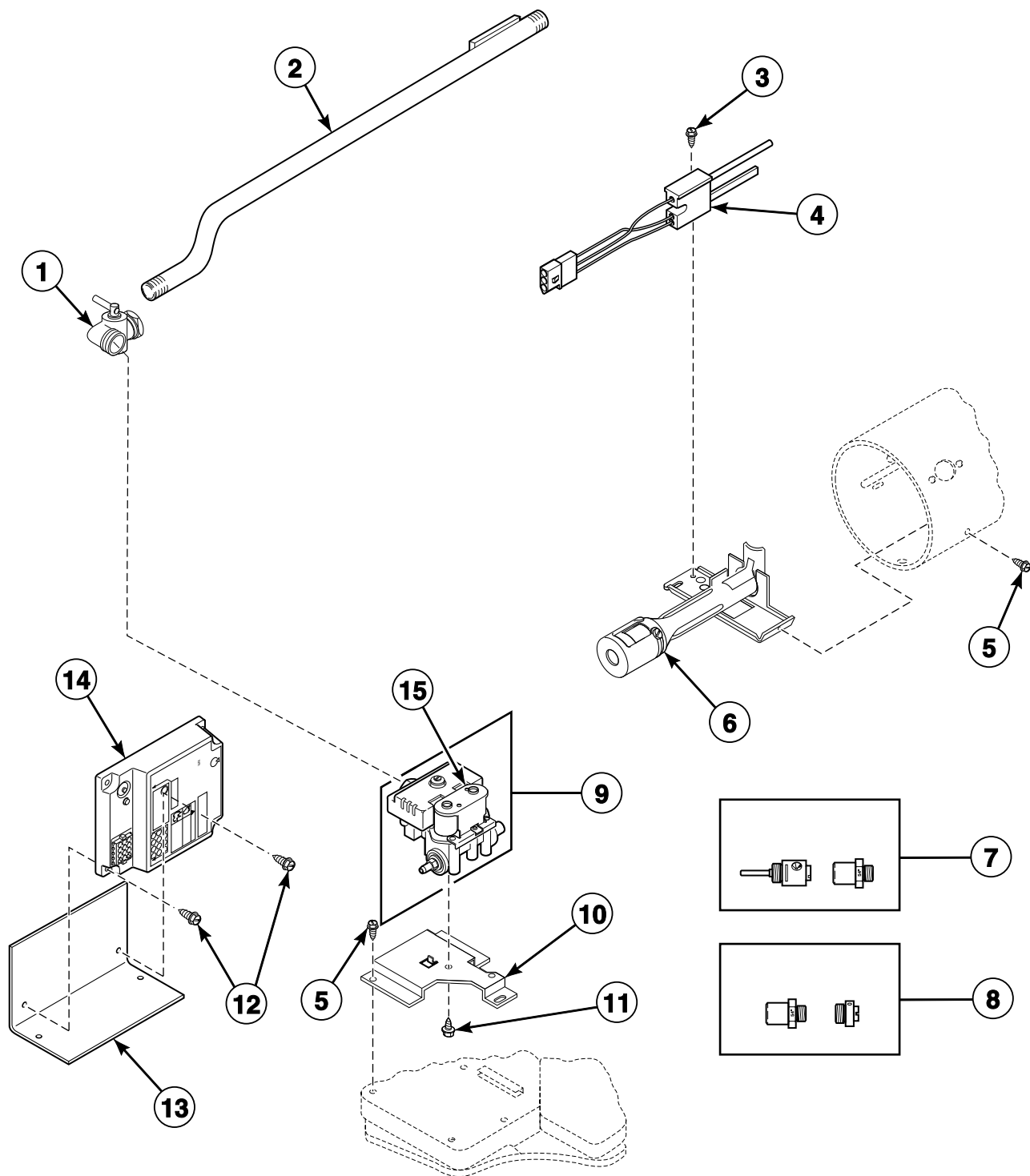


DRY2079P_512026

SSG2 P24

Gas Valve, Igniter, Ignition Control and Gas Conversion Kits

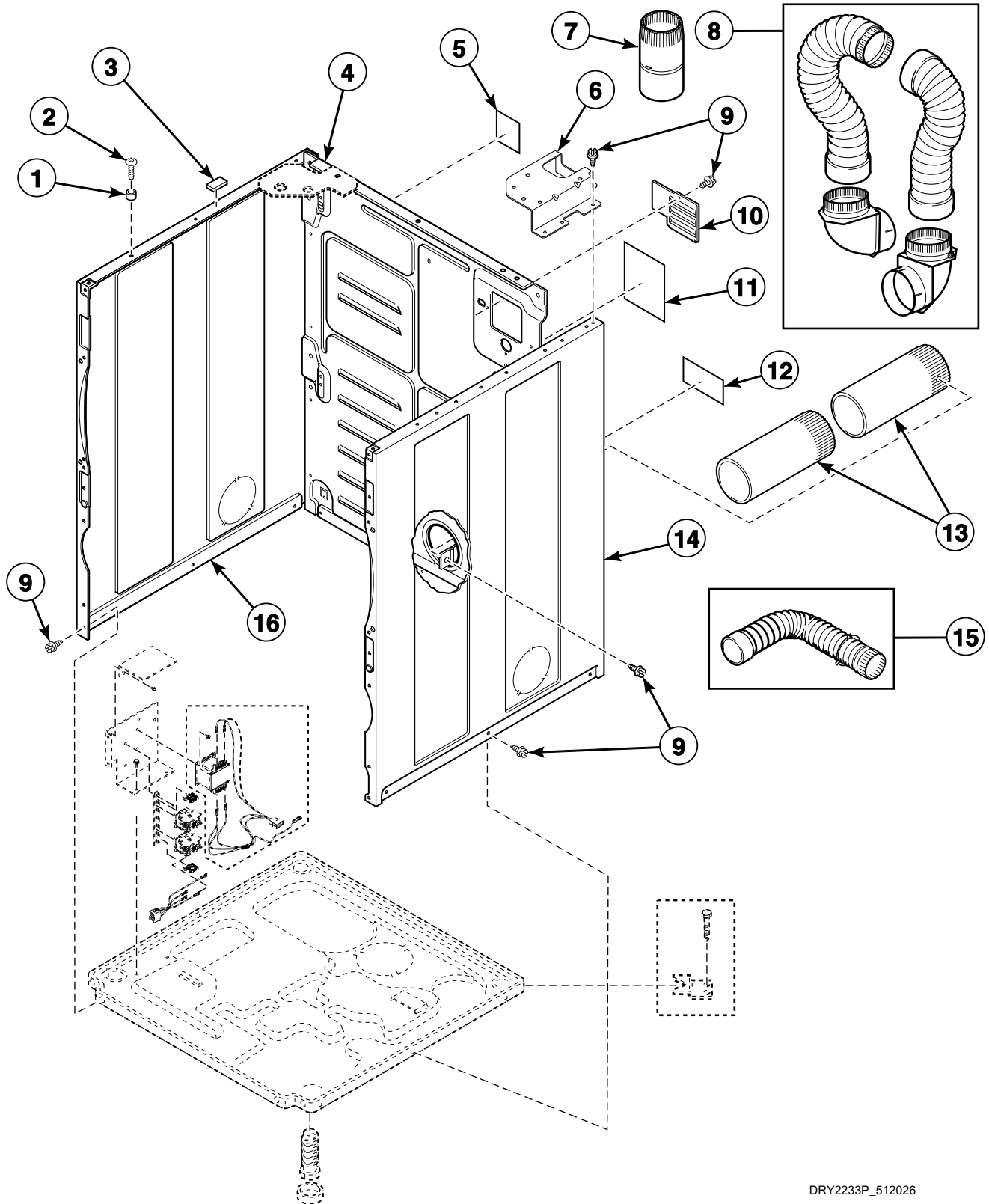
Models SSG119*F3058 and SSG419*F3058



DRY2080P_512026

SSG2 P25

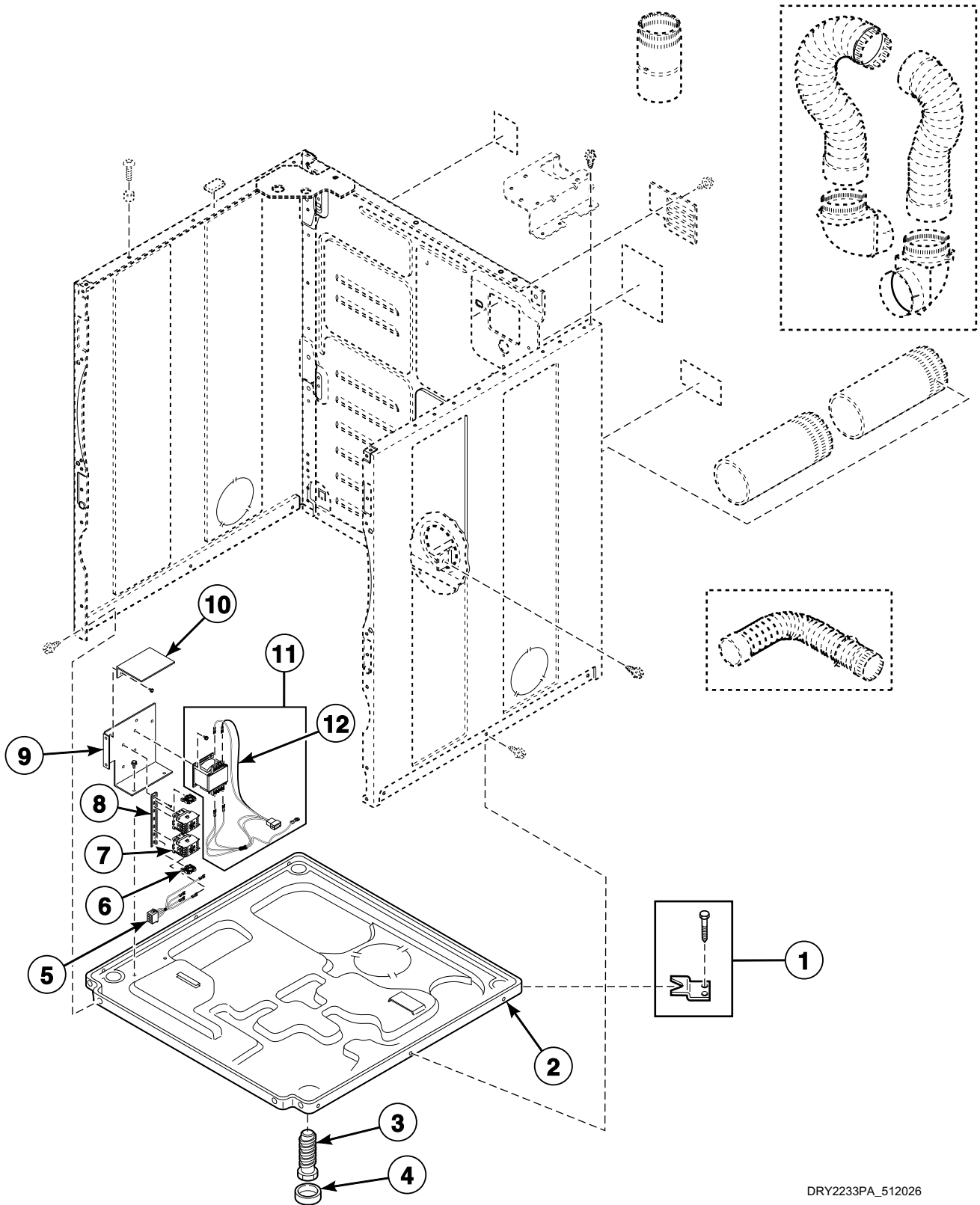
Cabinet and Exhaust Duct



DRY2233P_512026

SSG2 P26

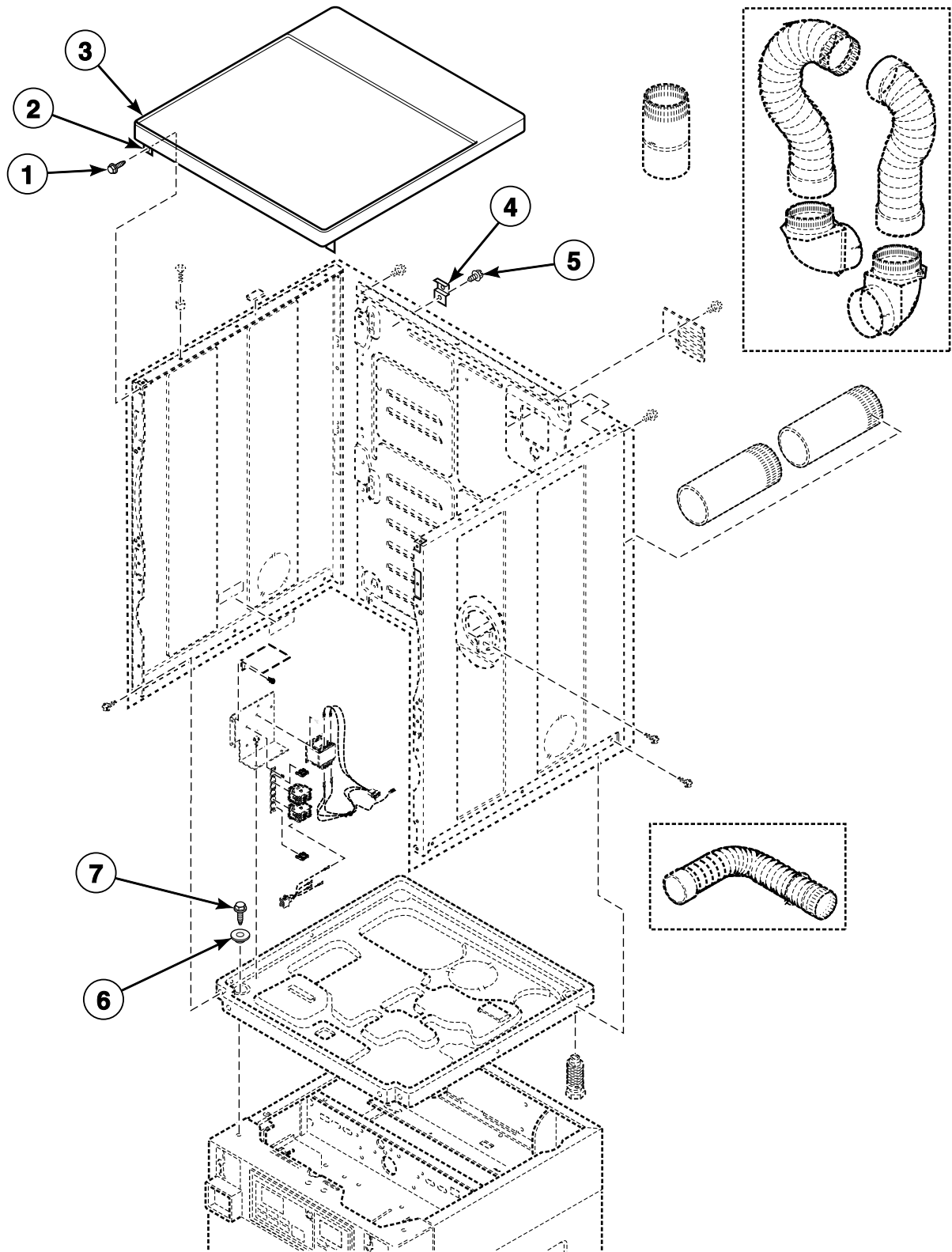
Base



DRY2233PA_512026

SSG2 P27

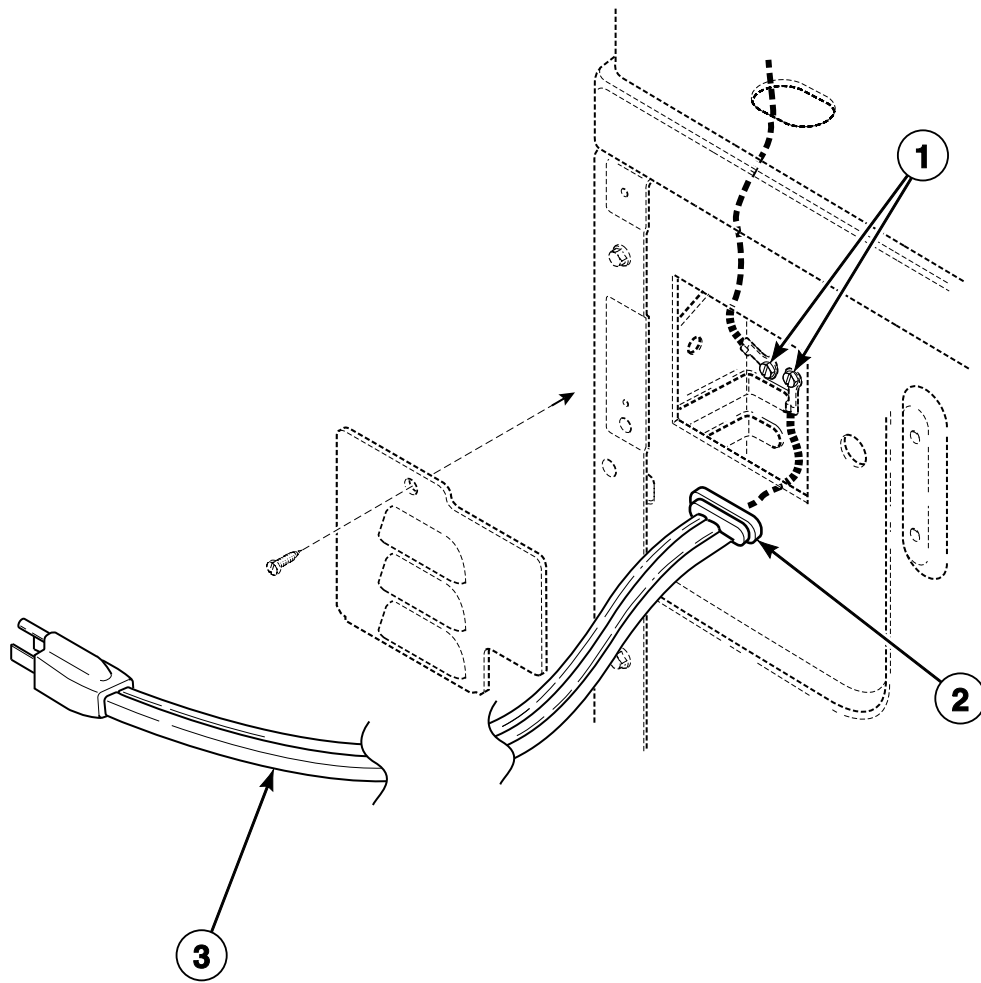
Cabinet Top



SWD1251P_512026

SSG2 P28

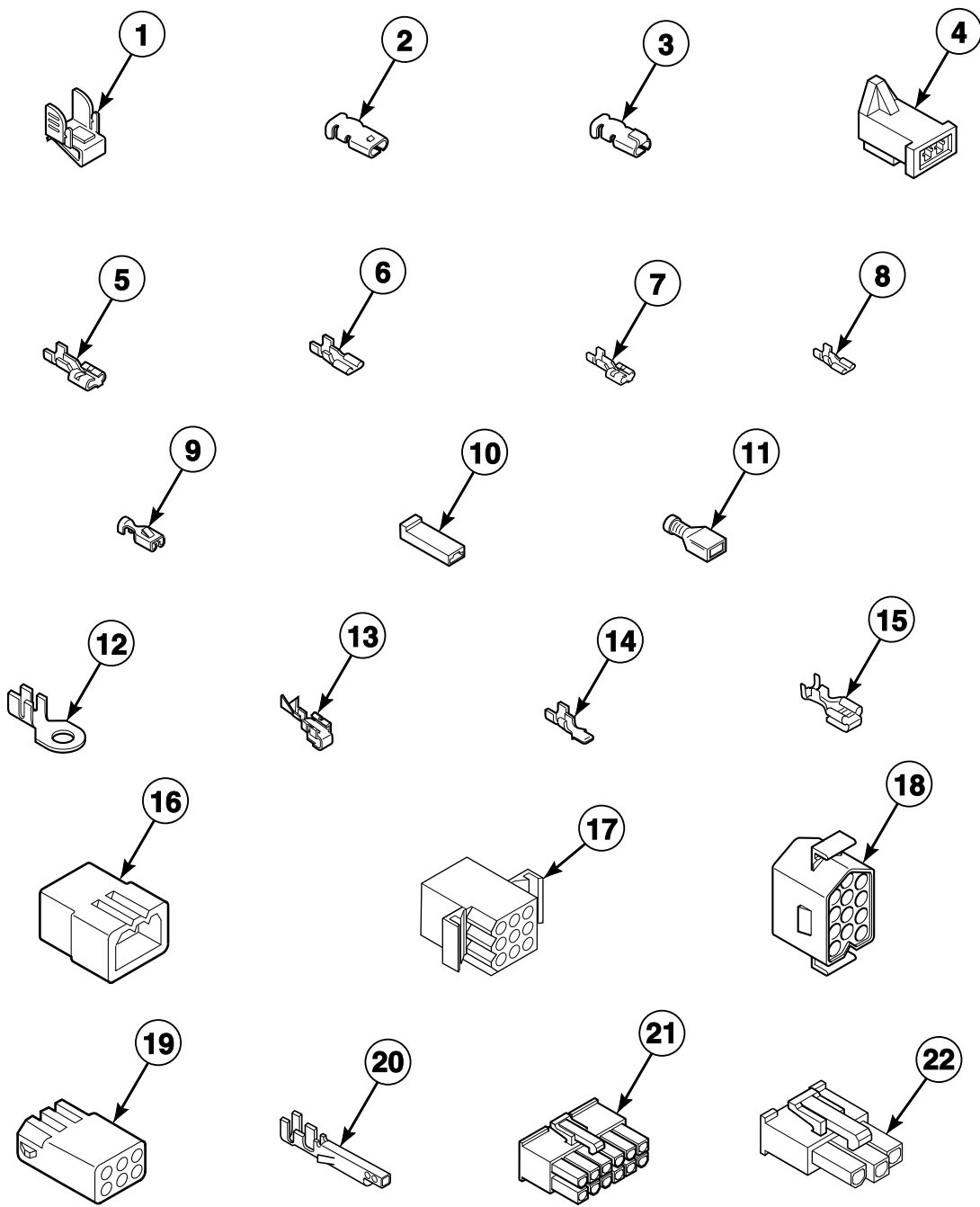
Power Cord



D408PE3A_512026

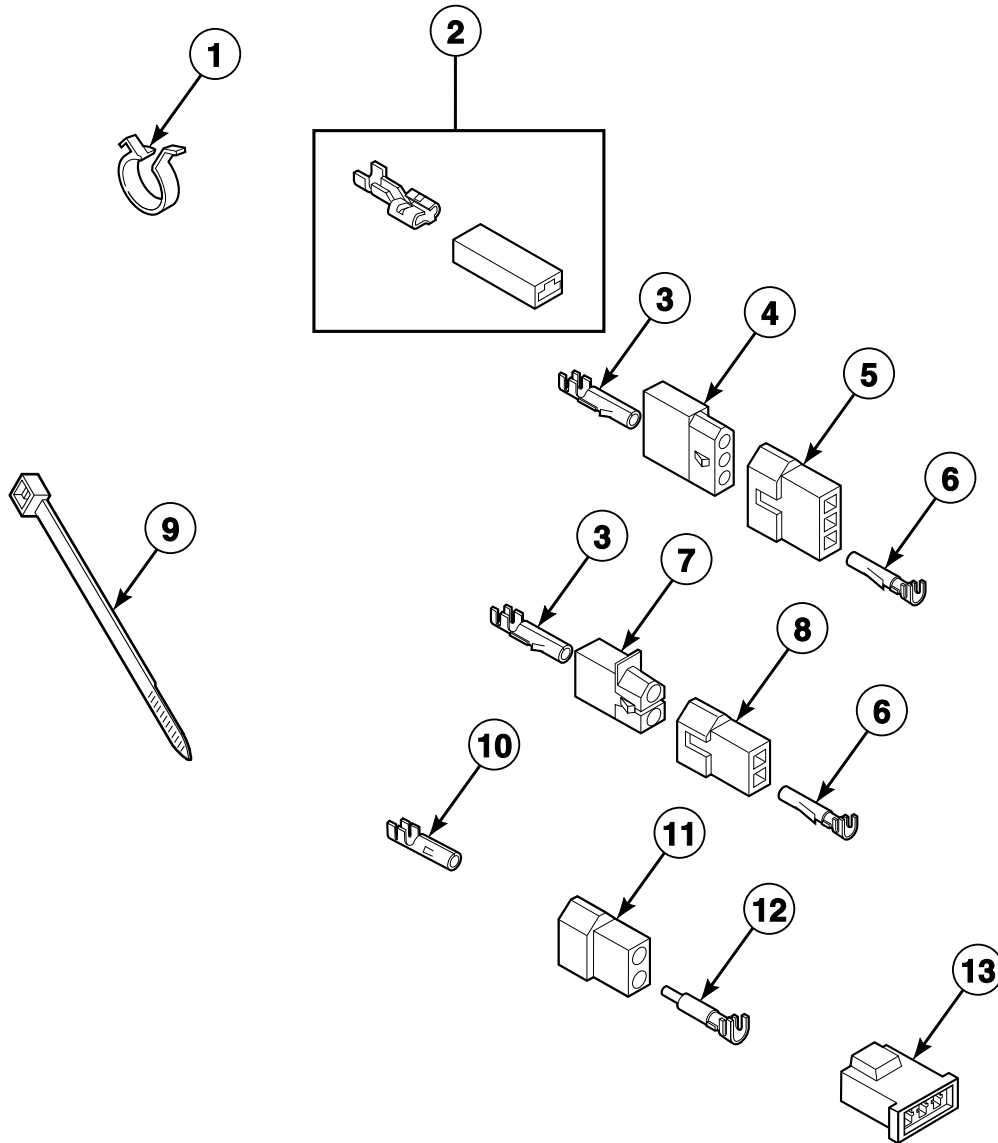
SSG2 P29

Terminal Block and Terminals



DRY2209P_512026

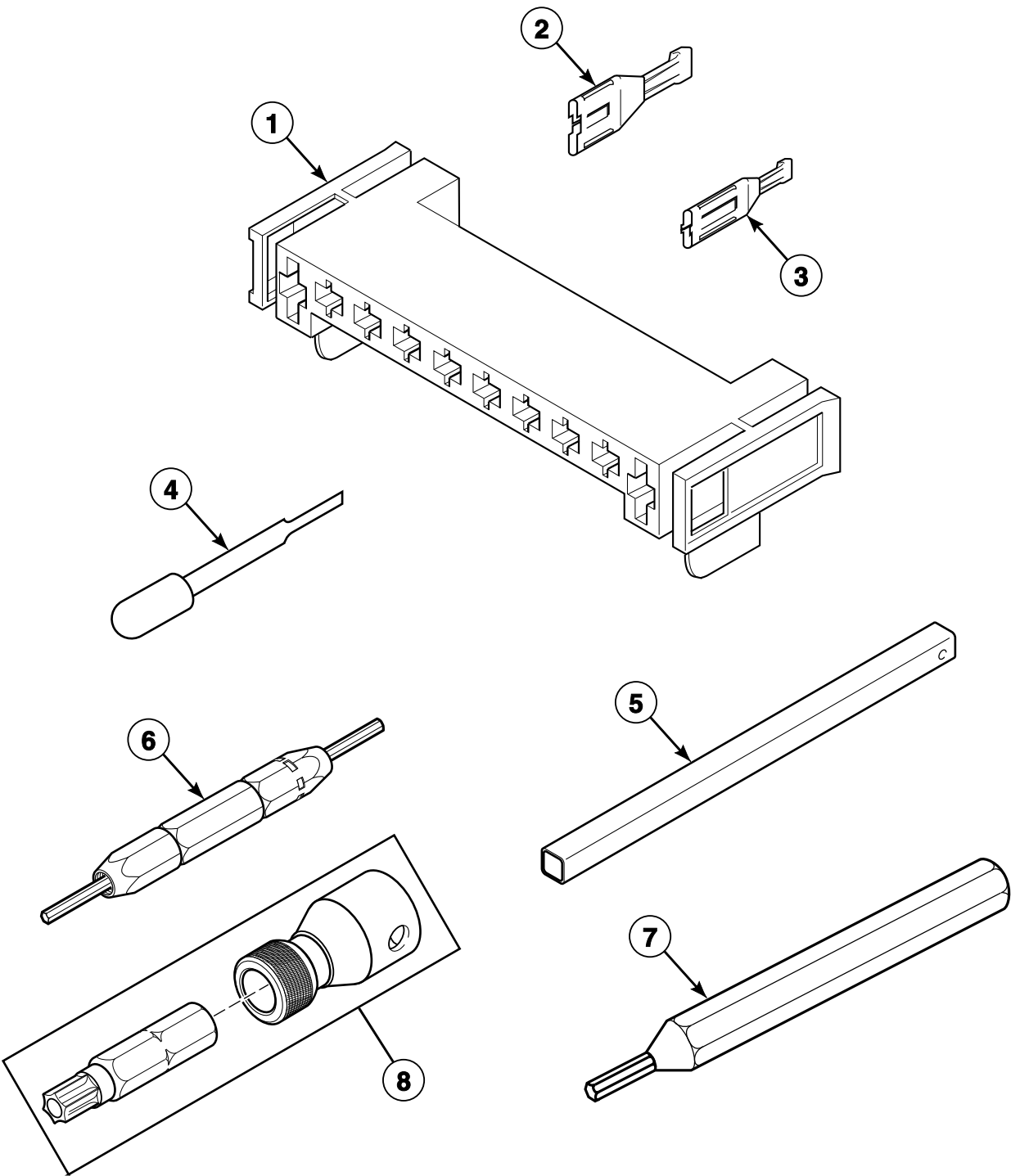
Terminals



DRY1769P_512026

SSG2 P31

Terminals and Terminal Extractor Tools

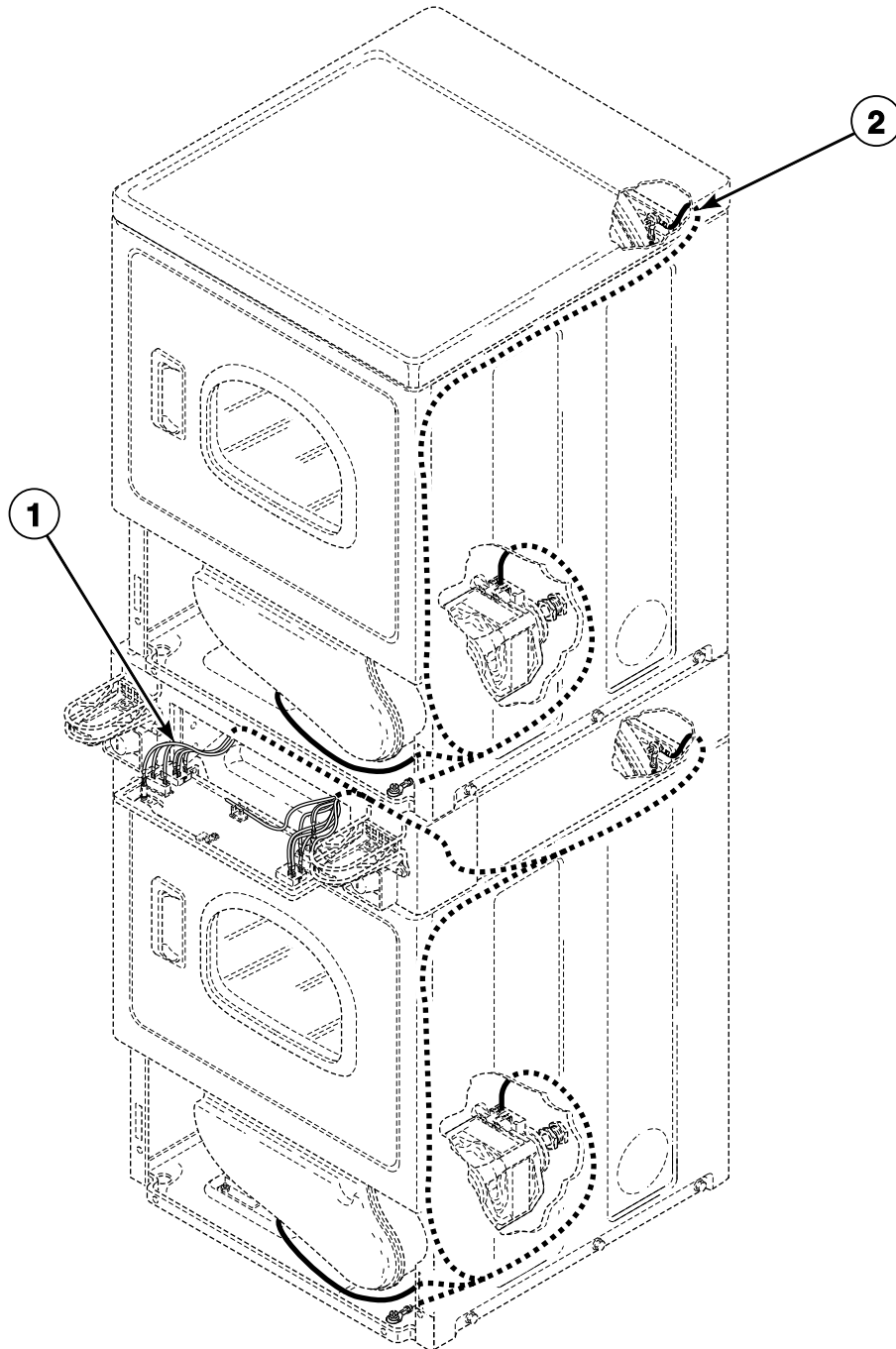


DRY2081P_512026

SSG2 P32

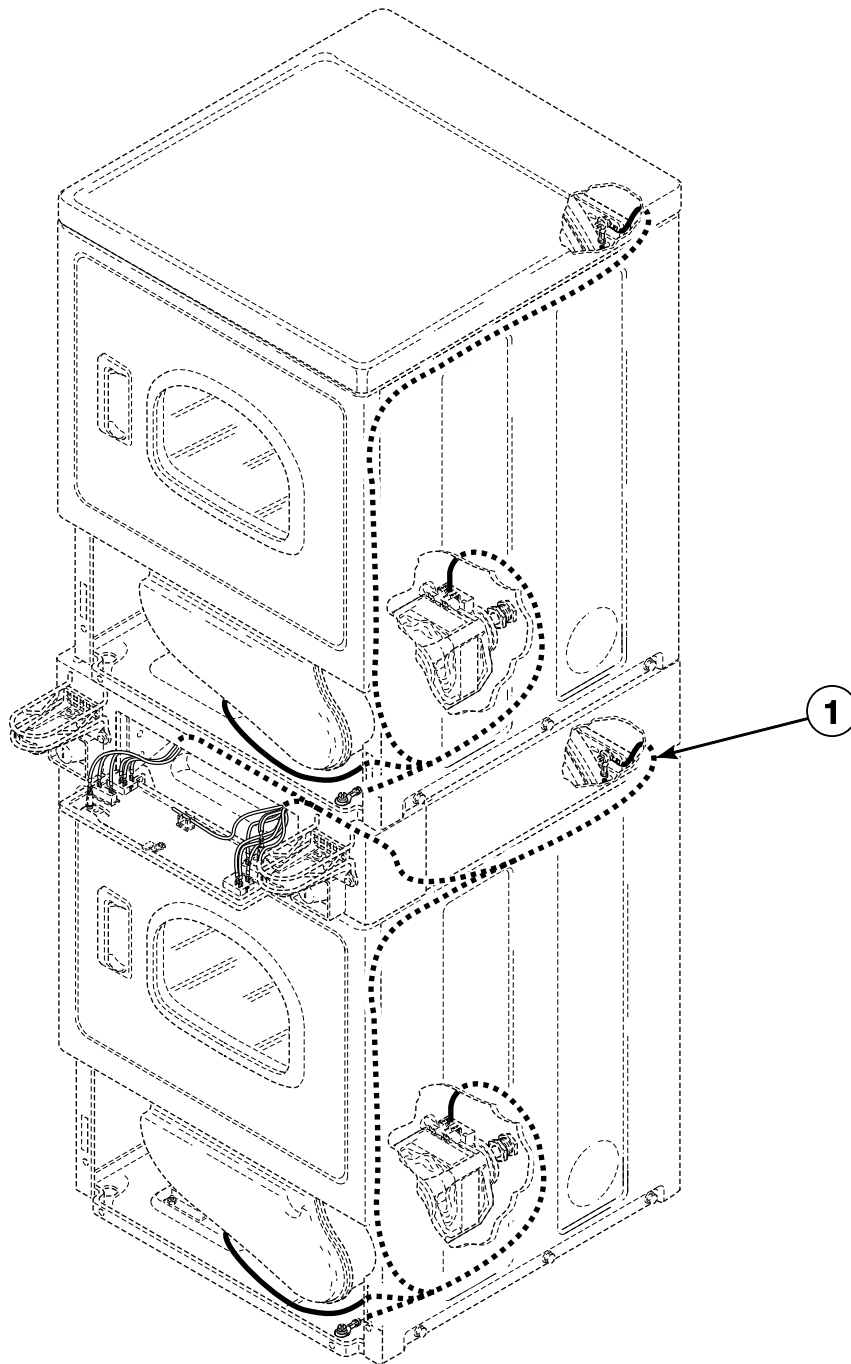
Wire Harnesses and Wires - Nonmetered and Coin Slide Models (Drawing 1 of 4)

Models HSE117*F2802, HSE117*F2902, HSE917*F2802, HSE917*F2902, HSG119*F0902, HSG919*F0902, JSE807*F4350, JSE907*F4350, JSG809*F3060, JSG909*F3060, NSE817*F5422, NSE917*F5422, NSG919*F3022, SSE007*F3000, SSE007*F4350, SSE107*G3018, SSE117*F3000, SSE117*F4350, SSE117*F5412, SSE117*G3018, SSE807*F4350, SSE807*G3018, SSE907*G3018, SSE917*F4350, SSG109*M3013, SSG119*F3000, SSG119*F3058, SSG119*F3060, SSG119*F5412, SSG119*F5480, SSG119*M3013, SSG909*M3013, SSG919*F3028, SSG919*F3060, USE017*F5412 and USG019*F5412



Wire Harnesses and Wires - Nonmetered and Coin Slide Models (Drawing 2 of 4)

Models HSE117*F2802, HSE117*F2902, HSE917*F2802, HSE917*F2902, HSG119*F0902, HSG919*F0902, JSE807*F4350, JSE907*F4350, JSG809*F3060, JSG909*F3060, NSE817*F5422, NSE917*F5422, NSG919*F3022, SSE007*F3000, SSE007*F4350, SSE107*G3018, SSE117*F3000, SSE117*F4350, SSE117*F5412, SSE117*G3018, SSE807*F4350, SSE807*G3018, SSE907*G3018, SSE917*F4350, SSG109*M3013, SSG119*F3000, SSG119*F3058, SSG119*F3060, SSG119*F5412, SSG119*F5480, SSG119*M3013, SSG909*M3013, SSG919*F3028, SSG919*F3060, USE017*F5412 and USG019*F5412

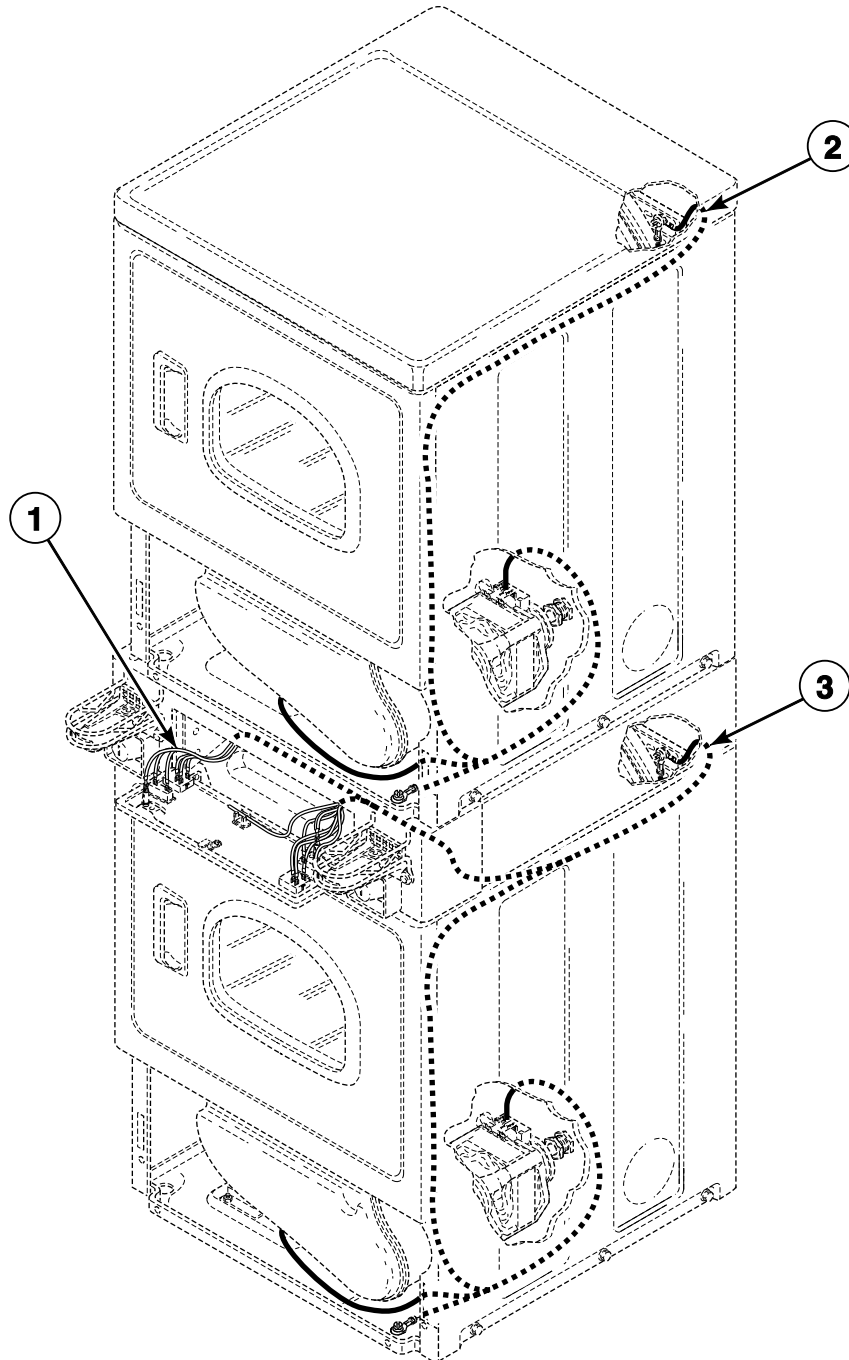


DRY1912PA_512026

SSG2 P34

Wire Harnesses and Wires - Nonmetered and Coin Slide Models (Drawing 3 of 4)

Models NSE917*F3022, SSE807*F3000 and SSE917*F3000
Models Through Serial No. 1303025314

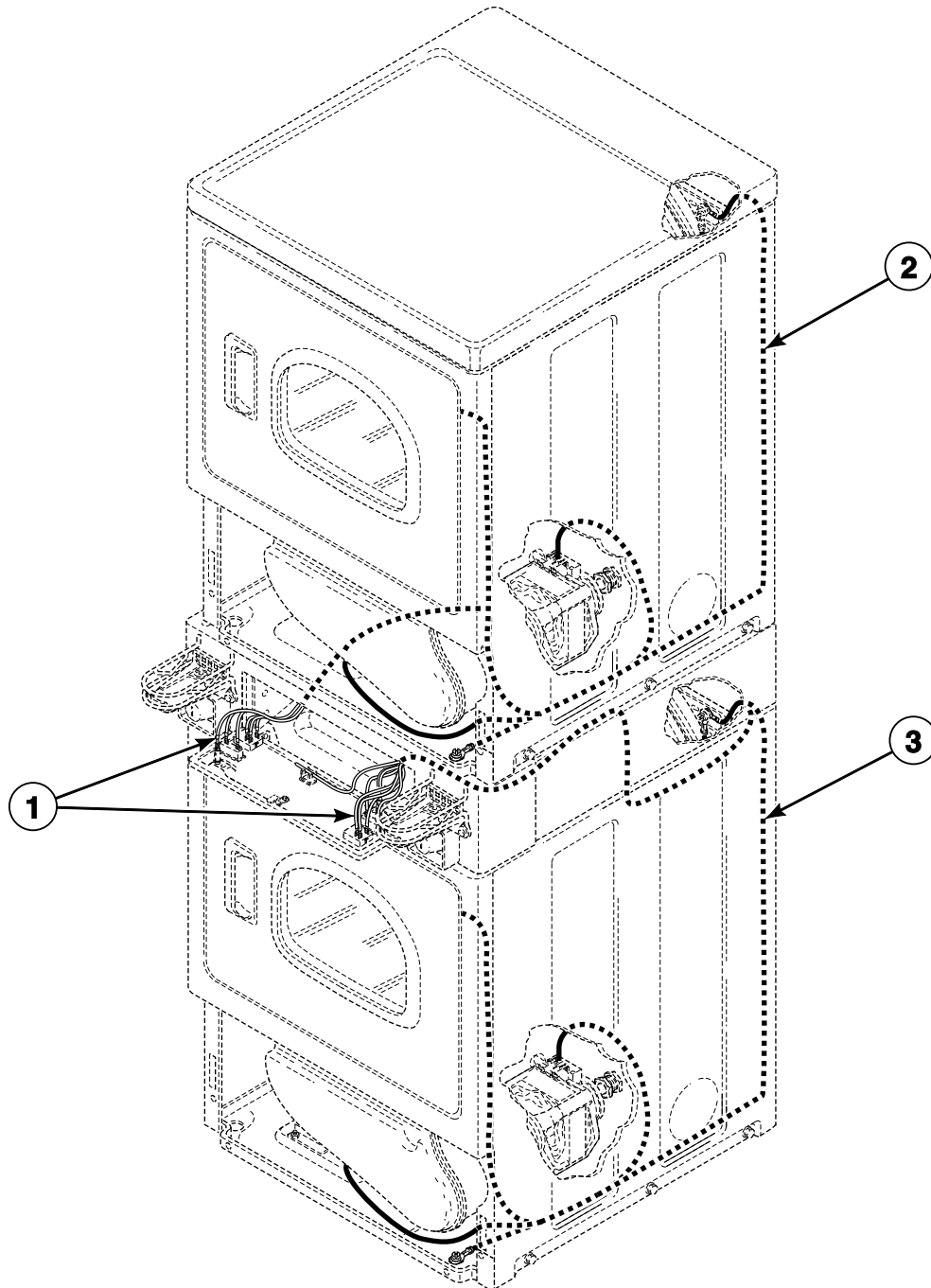


DRY1912PB 512026

SSG2 P35

Wire Harnesses and Wires - Nonmetered and Coin Slide Models (Drawing 4 of 4)

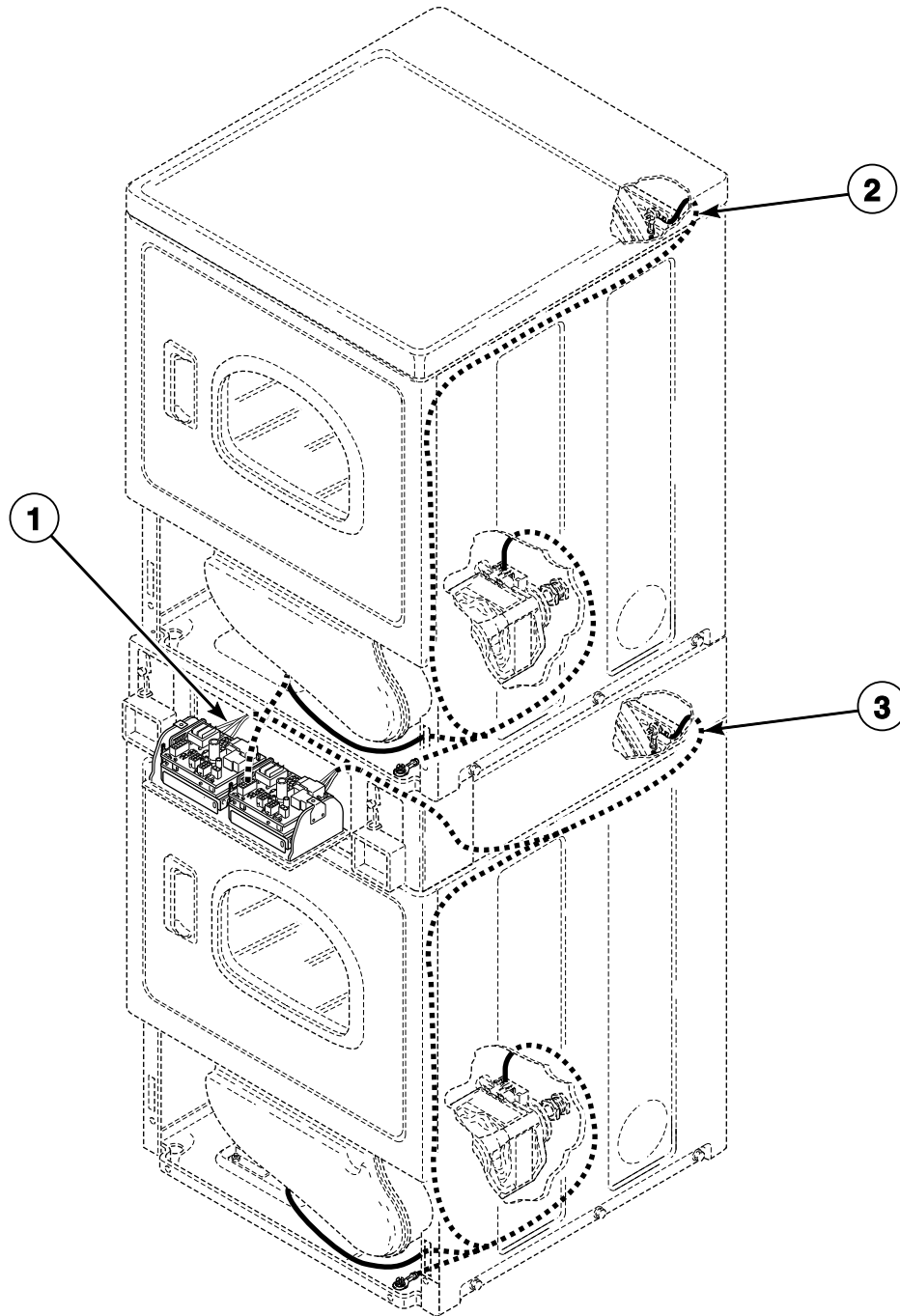
Models NSE917*F3022, SSE807*F3000 and SSE917*F3000
Models Starting Serial No. 1303025315



DRY2287P_512026

Wire Harnesses and Wires - Coin Drop and Card Reader Models

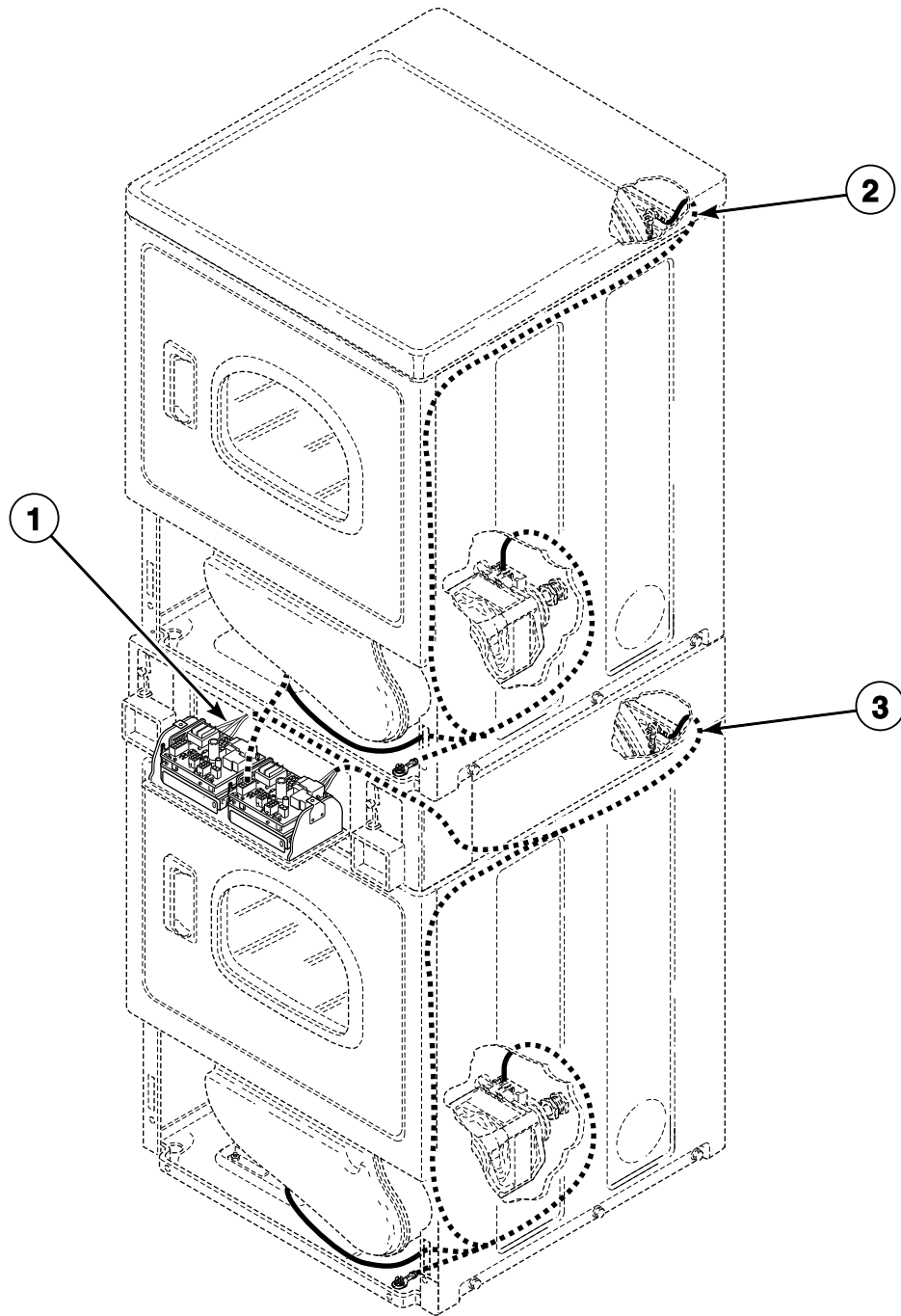
Models HSE517*F2802, HSE517*F2902, HSE717*F2802, HSE717*F2902, HSEB17*J2802, HSEB17*J2902, HSEF17*J2802, HSEF17*J2902, HSEZ17*F2802, HSEZ17*F2902, HSG519*F0902, HSG719*F0902, HSGB19*J0902, HSGF19*J0902, HSGZ19*F0902, SSE417*F3000, SSE417*F4350, SSEA07*G3018, SSEF17*J4350, SSG419*F3000, SSG419*F3058 and SSGF19*J3060



DRY2051P_512026

Wire Harnesses and Wires

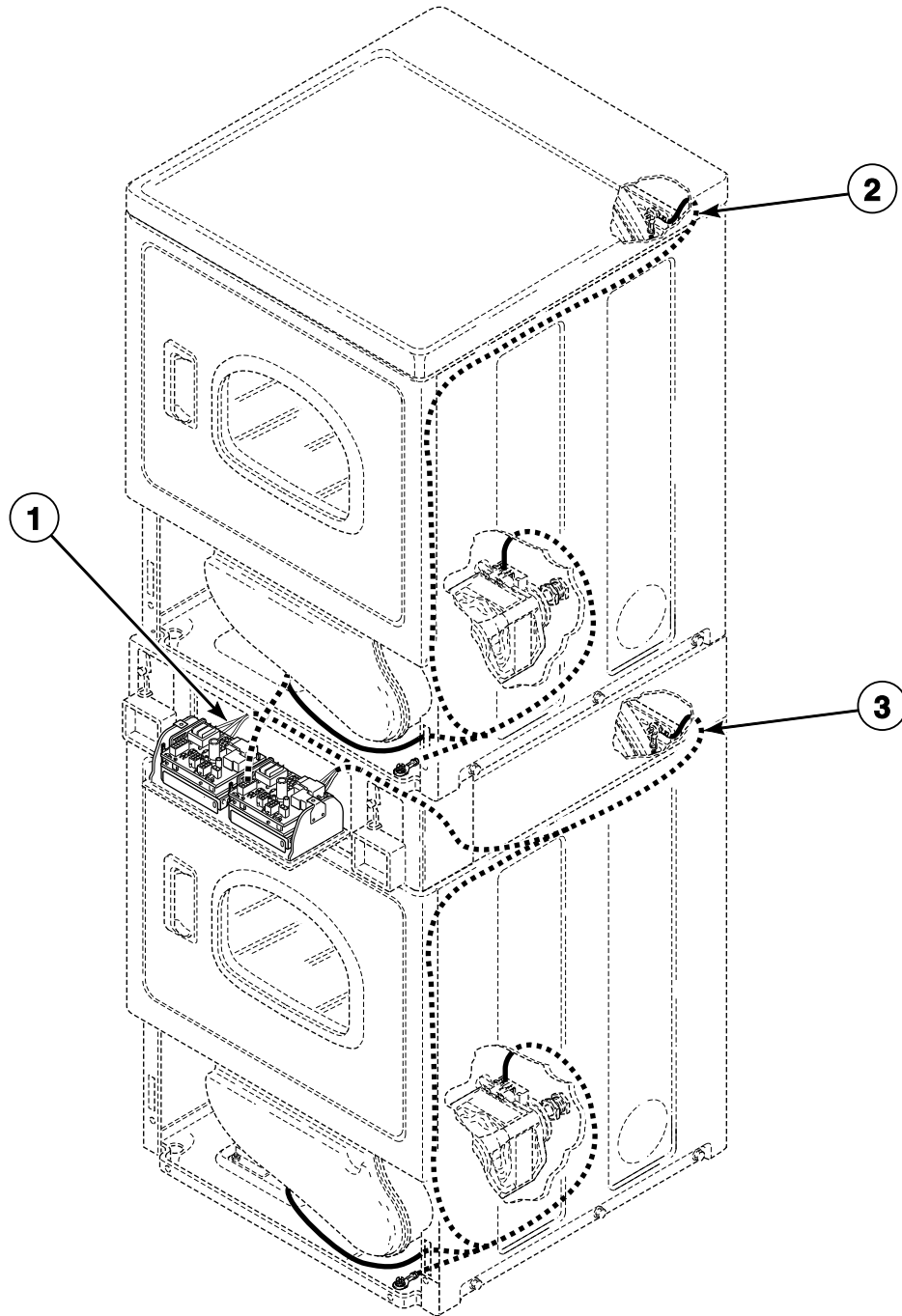
Models JSGBEFGW301EW01, JSGBGFGW301EW01 and SSGX09*M3013



DRY2051P_512026

Wire Harnesses and Wires - Coin Drop Card Reader Models Through Serial No. 0904

Models HSER17*F2802, HSER17*F2902, HSET17*F2802, HSET17*F2902, HSEX17*F2802, HSEX17*F2902, HSEY17*F2802, HSEY17*F2902, HSEY17*F99N2, HSGR19*F0902, HSGT19*F0902, HSGX19*F0902, HSGY19*F0902, SSEX07*G3018 and SSGX19*F3060

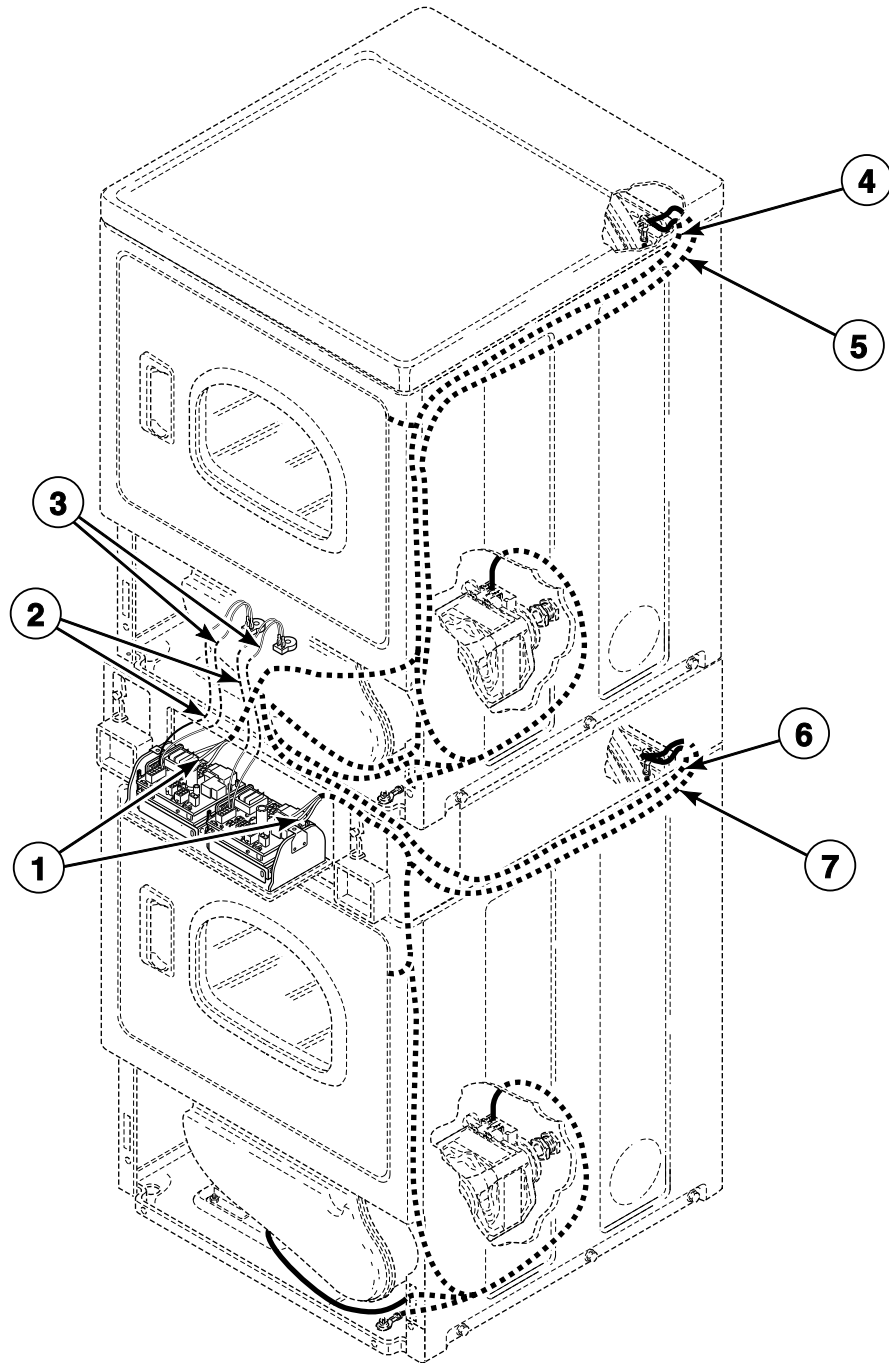


DRY2051P_512026

SSG2 P39

Wire Harnesses and Wires - Coin Drop, Card Reader and OPL Models Starting Serial No. 0904

Models HSER17*F2802, HSET17*F2802, HSEX17*F2802, HSEX17*F2902, HSEY17*F99N2, HSGR19*F0902, HSGT19*F0902, HSGX19*F0902, HSGY19*F0902, JSEBFGW301EW01, JSEBFGW301EW01, NSGBXFGW301NW22, SSEX07*G3018 and SSGX19*F3060

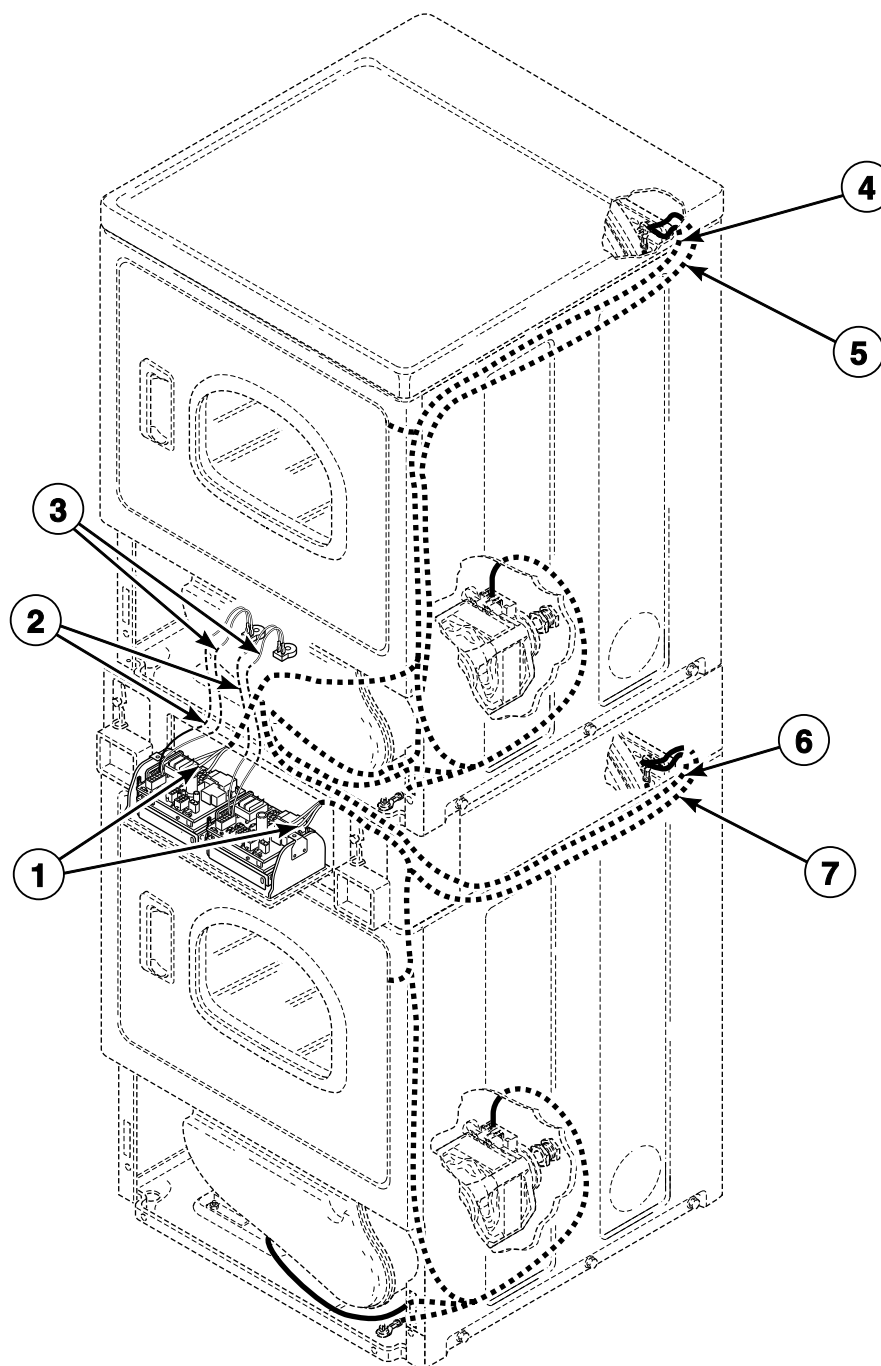


DRY2176P_512026

SSG2 P40

Wire Harnesses and Wires - Coin Drop, Card Reader and OPL Models Starting Serial No. 0904 and Continuing Through Serial No. 1303025314

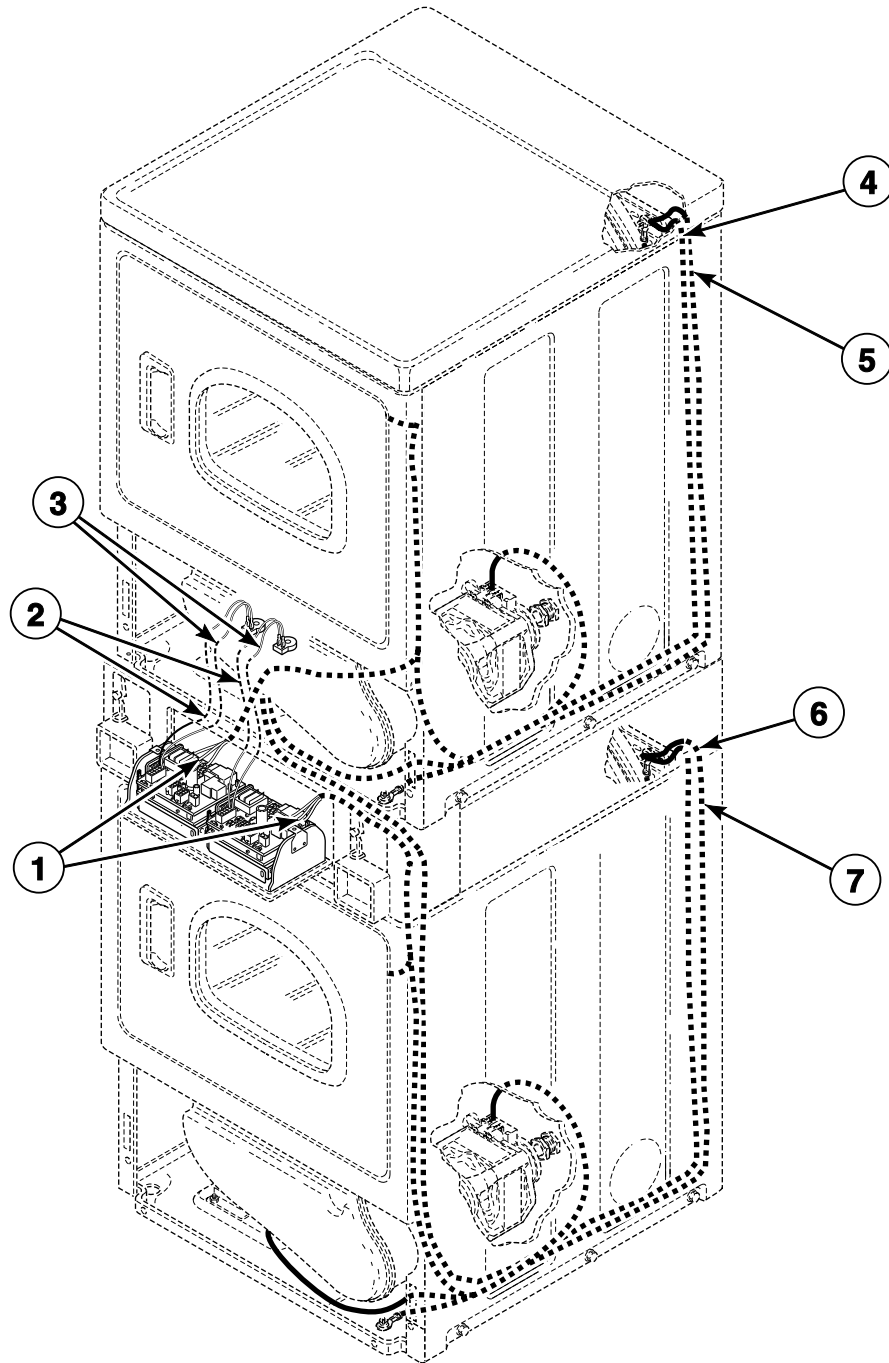
Models HSEBXFGW171FW28, HSER17*F2902, HSET17*F2902, HSEY17*F2802, HSEY17*F2902 and NSEBXFGW301NW22



DRY2176P_512026

Wire Harnesses and Wires - Coin Drop, Card Reader and OPL Models Starting Serial No. 1303025315

Models HSEBXFGW131DW01, HSEBXFGW171FW28, HSEBXFGW541DW01, HSER17*F2902, HSET17*F2902, HSEY17*F2802, HSEY17*F2902, NSEBXFGW301NW22, SSEBXFGW131DW01 and SSEBXFGW541DW01



DRY2302P_512026