

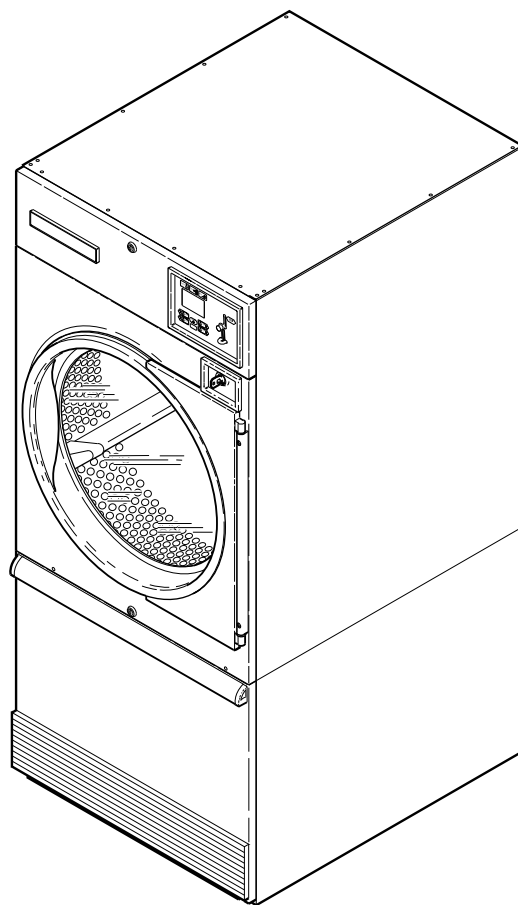
# Drying Tumblers ST2

25 Pound (220 Liter) Capacity

30 Pound (270 Liter) Capacity

35 Pound (350 Liter) Capacity

Refer to Page 3 for Model Numbers



T463P\_70184901

Parts

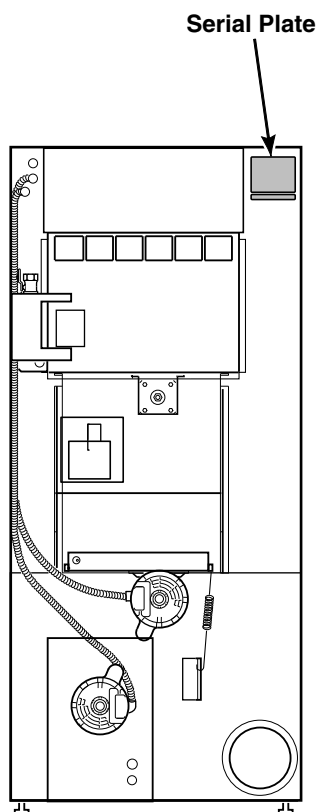
## Parts Ordering Information

If literature or replacement parts are required, contact the source from whom the machine was purchased or contact Alliance Laundry Systems at for the name and address of the nearest authorized parts distributor.

For technical assistance, call either of the numbers listed below:

## Serial Plate Location

When calling or writing about your product, be sure to mention model and serial numbers. Model and serial numbers are located on serial plate(s) as shown.



TMB2462P\_70184901

## Model Identification

Information in this manual is applicable to these tumbler models:

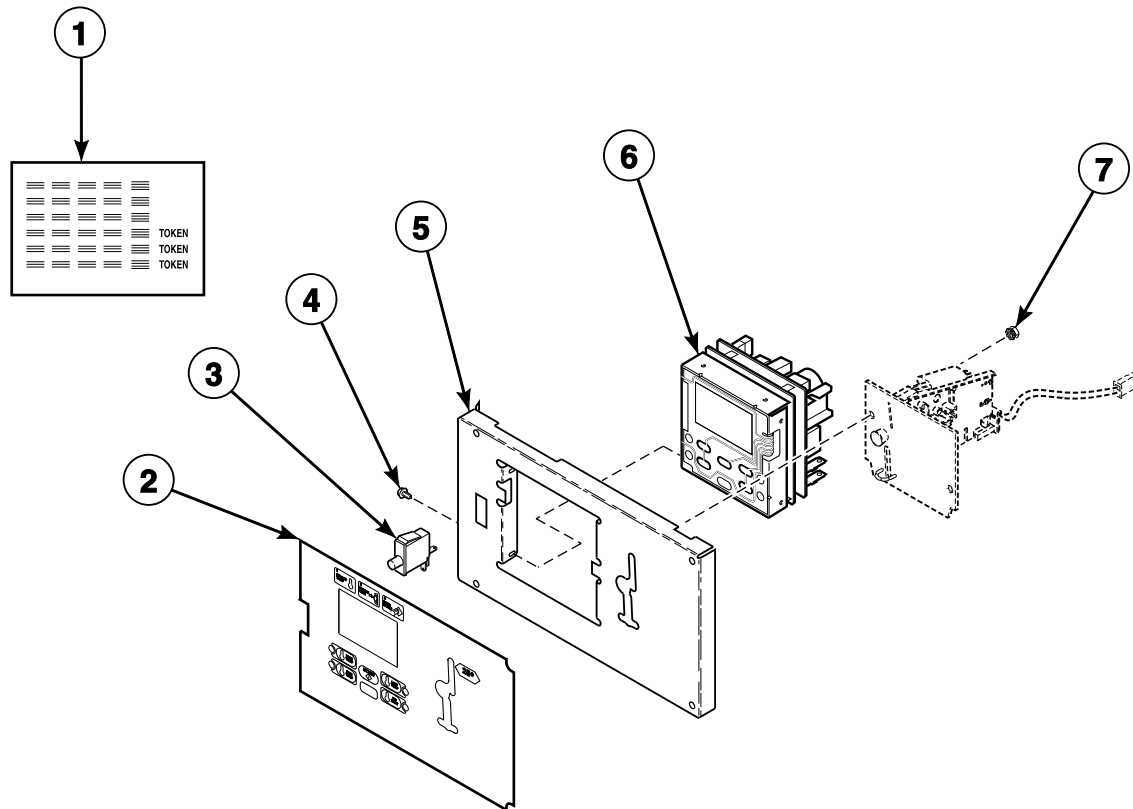
AT0350SRG	DT0350SEL	JC0350SEL	PC0220SSL	SC0220SRG
AT0350SSH	DT0350SFG	JC0350SFG	PC0270SEL	SC0220SSH
AT0350SSL	DT0350SRG	JC0350SRG	PC0270SFG	SC0220SSL
DA0220SRG	DT0350SSH	JC0350SSH	PC0270SRG	SC0270SEL
DA0270SRG	DT0350SSL	JC0350SSL	PC0270SSH	SC0270SFG
DA0350SRG	GC0220SEL	JT0220SEL	PC0270SSL	SC0270SRG
DC0220SEL	GC0220SSL	JT0220SFG	PC0350SEL	SC0270SSH
DC0220SFG	GC0270SEL	JT0220SRG	PC0350SFG	SC0270SSL
DC0220SRG	GC0270SFG	JT0220SSH	PC0350SRG	SC0350SEL
DC0220SSH	GC0270SRG	JT0220SSL	PC0350SSH	SC0350SFG
DC0220SSL	GC0270SSH	JT0270SEL	PC0350SSL	SC0350SRG
DC0270SEL	GC0270SSL	JT0270SFG	PT0220SEL	SC0350SSH
DC0270SFG	GT0220SSL	JT0270SRG	PT0220SFG	SC0350SSL
DC0270SRG	GT0270SEL	JT0270SSH	PT0220SRG	ST0220SEL
DC0270SSH	GT0270SFG	JT0270SSL	PT0220SSH	ST0220SFG
DC0270SSL	GT0270SRG	JT0350SEL	PT0220SSL	ST0220SRG
DC0350SEL	GT0270SSH	JT0350SFG	PT0270SEL	ST0220SSH
DC0350SFG	GT0270SSL	JT0350SRG	PT0270SFG	ST0220SSL
DC0350SRG	JA0220SRG	JT0350SSH	PT0270SRG	ST0270SEL
DC0350SSH	JA0270SRG	JT0350SSL	PT0270SSH	ST0270SFG
DC0350SSL	JA0350SRG	LC0350SRG	PT0270SSL	ST0270SRG
DT0220SEL	JC0220SEL	LT0220SRG	PT0350SEL	ST0270SSH
DT0220SFG	JC0220SFG	LT0270SRG	PT0350SFG	ST0270SSL
DT0220SRG	JC0220SRG	LT0350SRG	PT0350SRG	ST0350SEL
DT0220SSH	JC0220SSH	PA0220SRG	PT0350SSH	ST0350SFG
DT0220SSL	JC0220SSL	PA0270SRG	PT0350SSL	ST0350SRG
DT0270SEL	JC0270SEL	PA0350SRG	SA0220SRG	ST0350SSH
DT0270SFG	JC0270SFG	PC0220SEL	SA0270SRG	ST0350SSL
DT0270SRG	JC0270SRG	PC0220SFG	SA0350SRG	
DT0270SSH	JC0270SSH	PC0220SRG	SC0220SEL	
DT0270SSL	JC0270SSL	PC0220SSH	SC0220SFG	

Control suffix designation (10th and 11th characters):

CD – rotary coin drop	EY – electronic card ready	OM – OPL micro
CX – prep for coin	MT – manual timer	ZC – NetMaster coin network
CY – prep for card	NC – NetMaster coin	ZR – NetMaster card network
EC – electronic coin	NR – NetMaster card	ZX – NetMaster network, prep for coin
EP – electronic card reader	NX – NetMaster, prep for coin	ZY – NetMaster network, prep for card
EX – electronic coin ready	NY – NetMaster, prep for card	

# Electronic Coin Drop Components

Models with EC and EX Control Suffixes

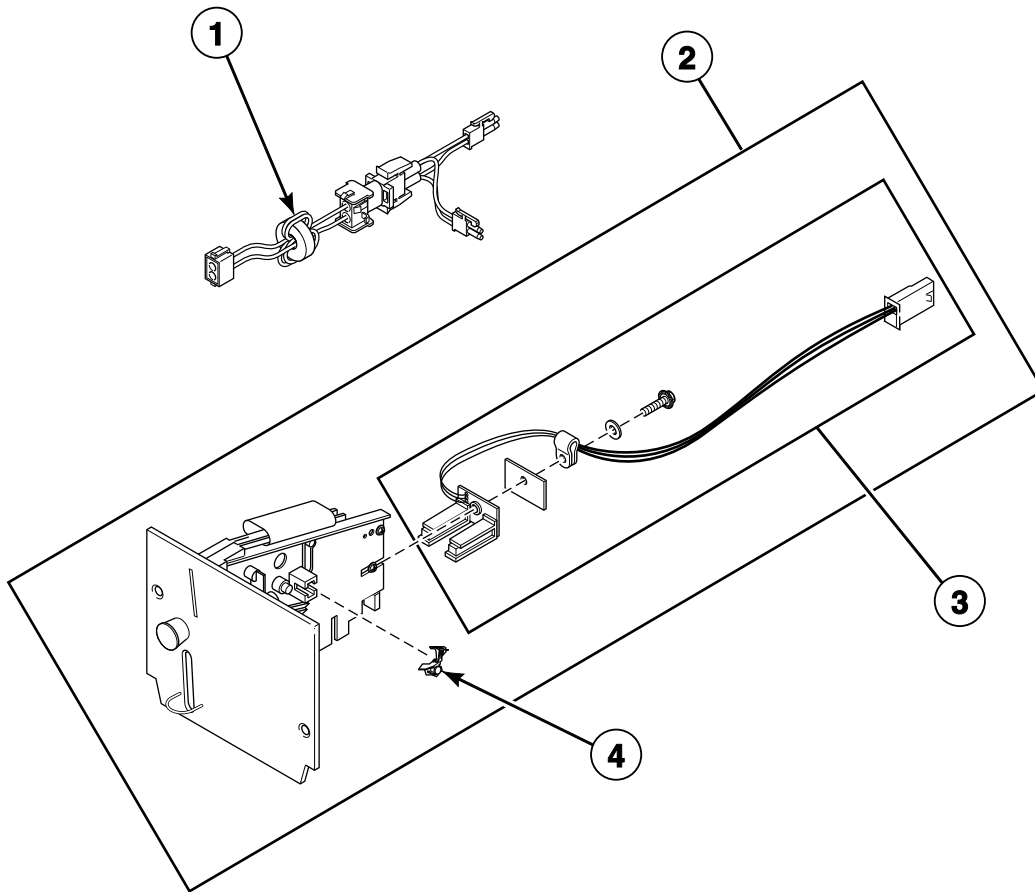


TMB2920P\_70184901

ST2 P1



# Coin Drop Assemblies

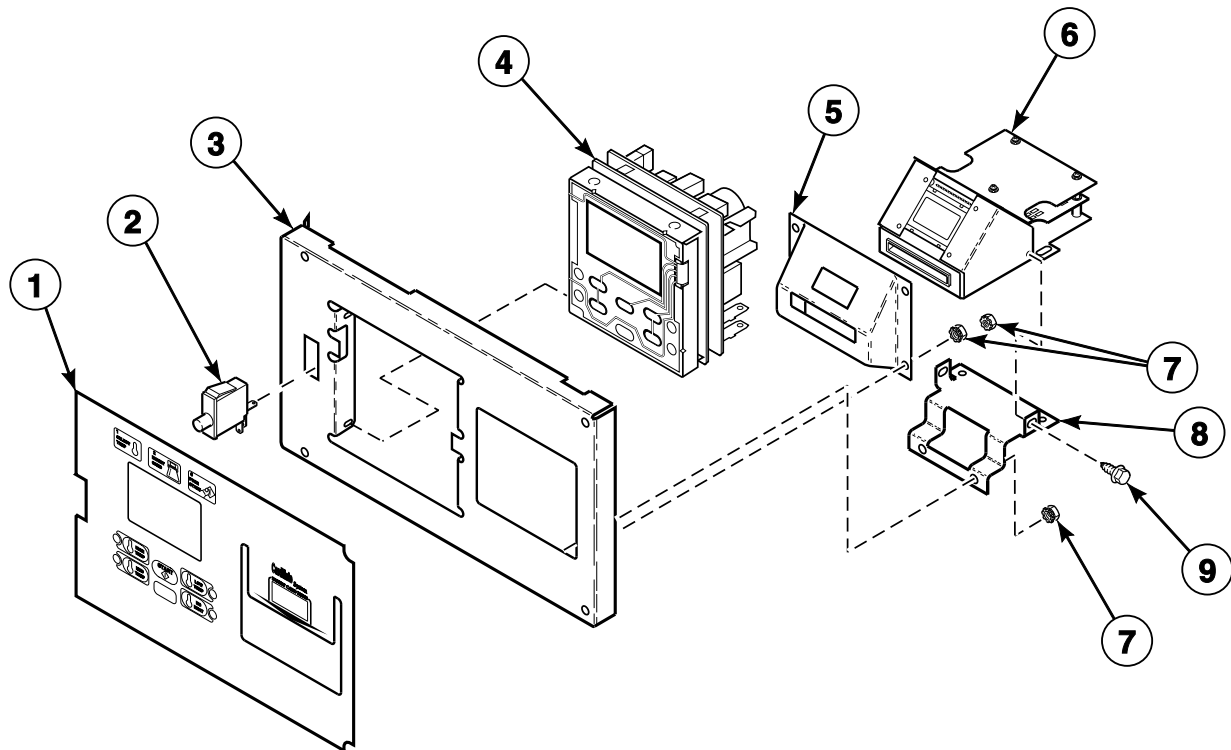


TMB2738P\_70184901

ST2 P2

# Card Reader Components

Models with EP and EY Control Suffixes

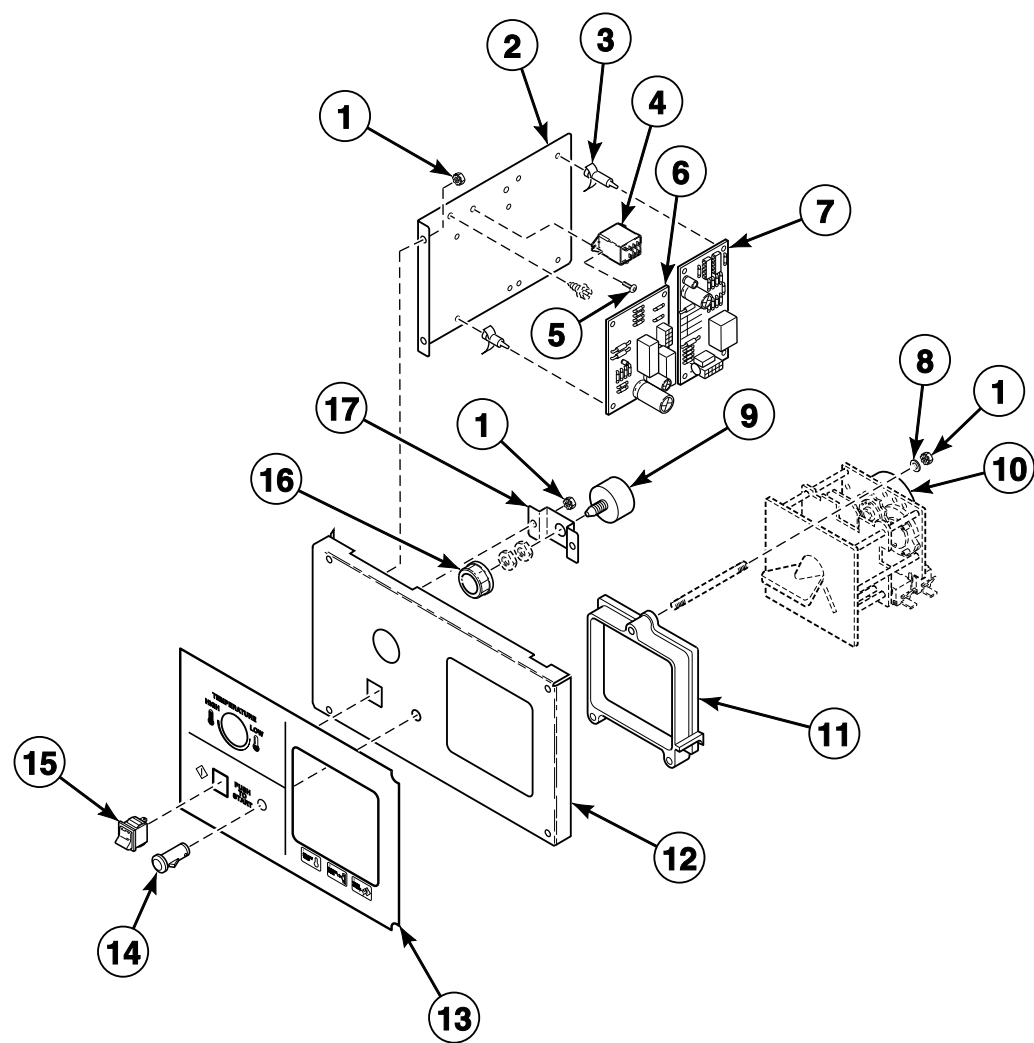


T444PZ3A\_70184901

ST2 P3

# Electromechanical Coin Drop Components

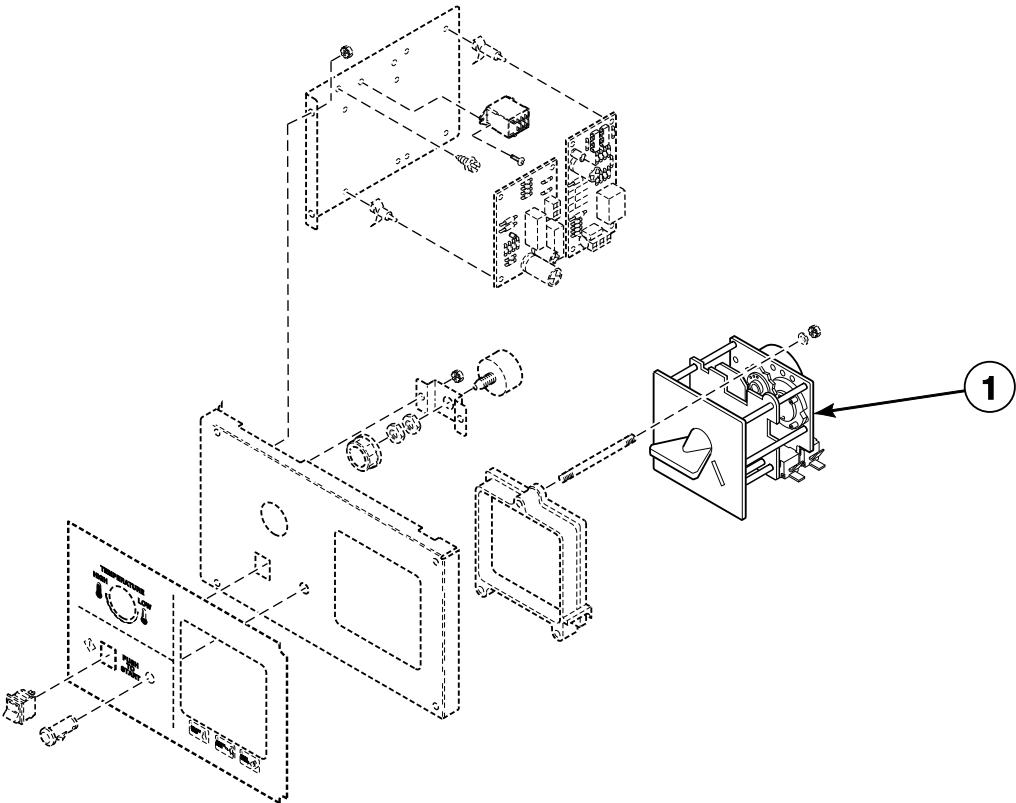
Models with CD Control Suffix



TMB1958P\_70184901

# Rotary Coin Drop Assemblies

Models with CD Control Suffix

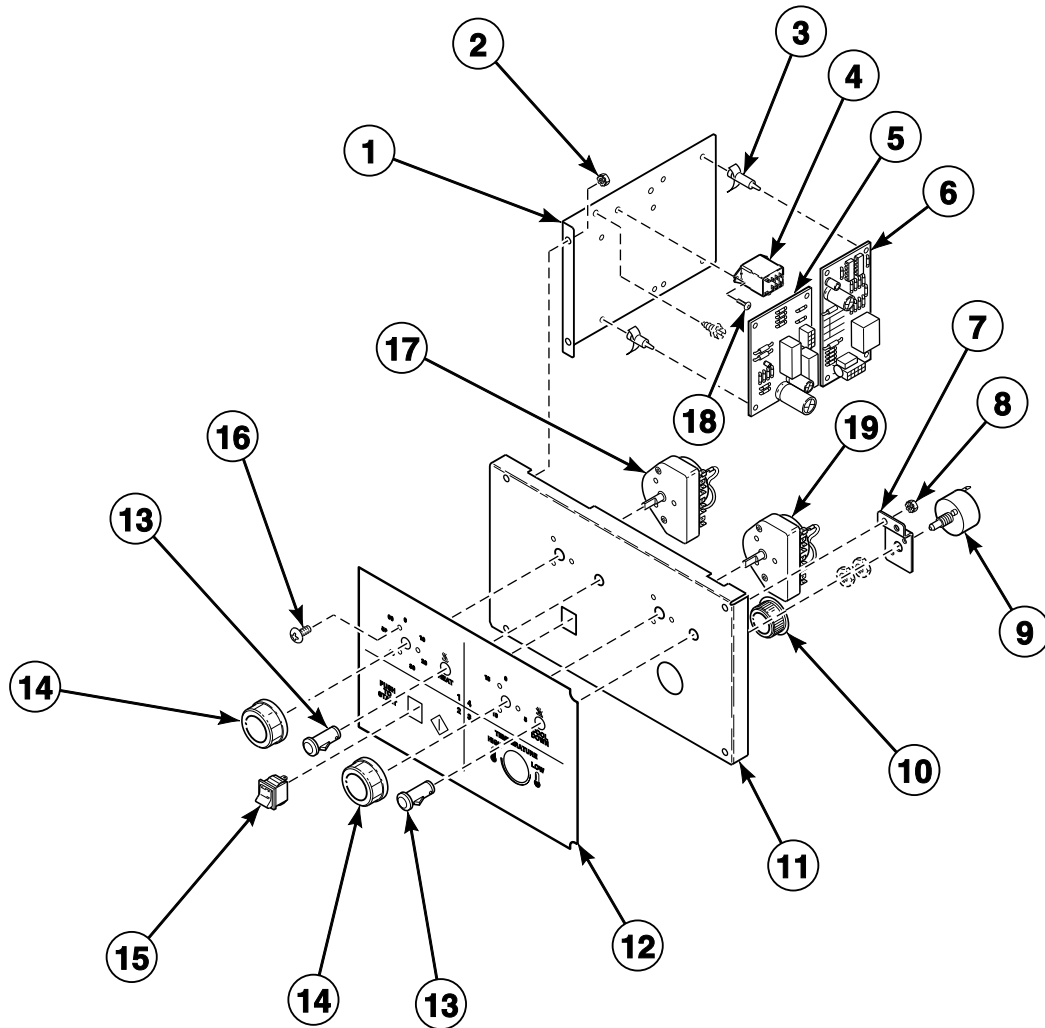


TMB1958PA\_70184901

ST2 P5

# Manual Dual Timer Controls

Models with MT Control Suffix

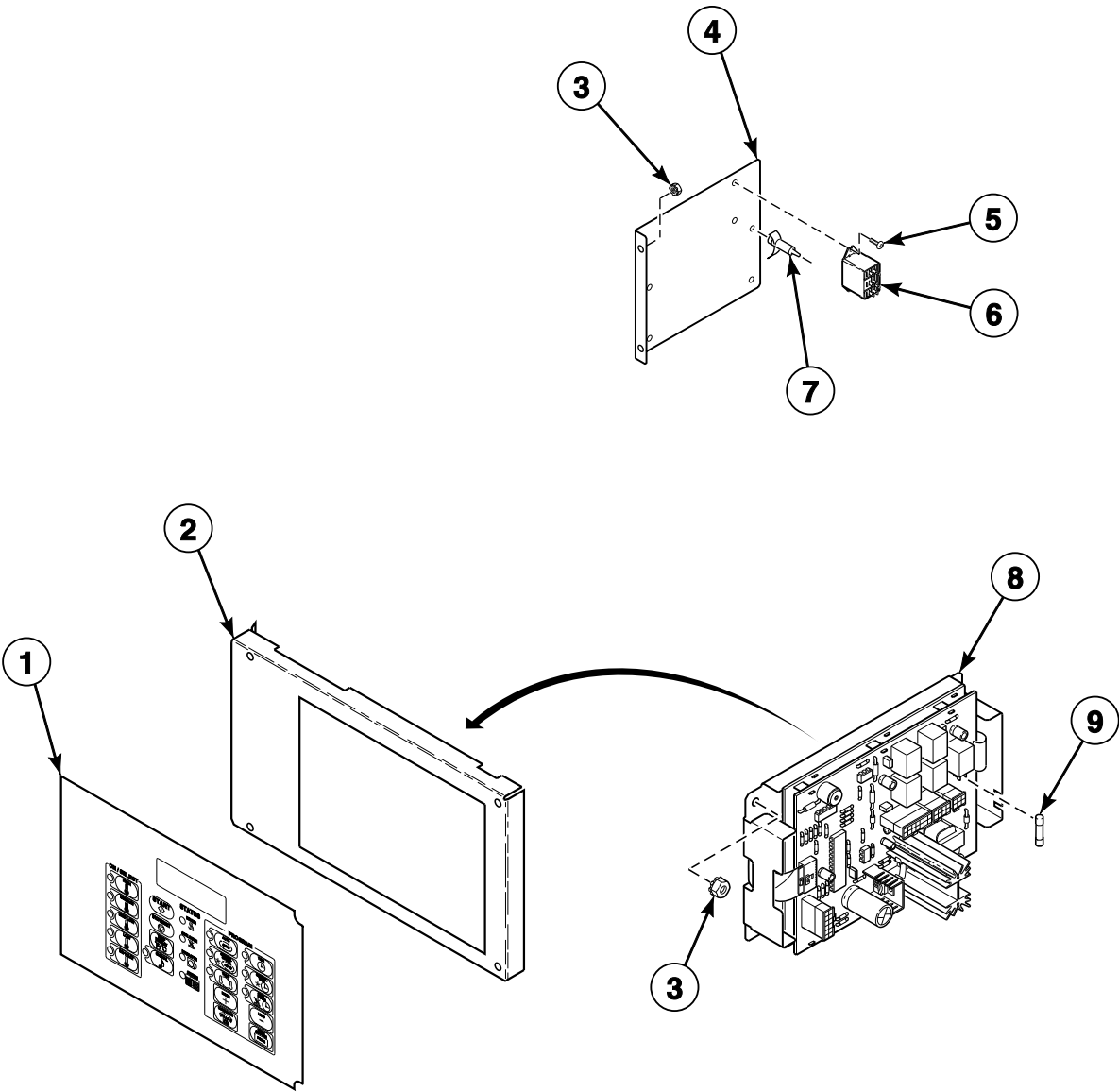


T142K\_70184901

ST2 P6

# OPL Microprocessor Controls

Models with OM Control Suffix

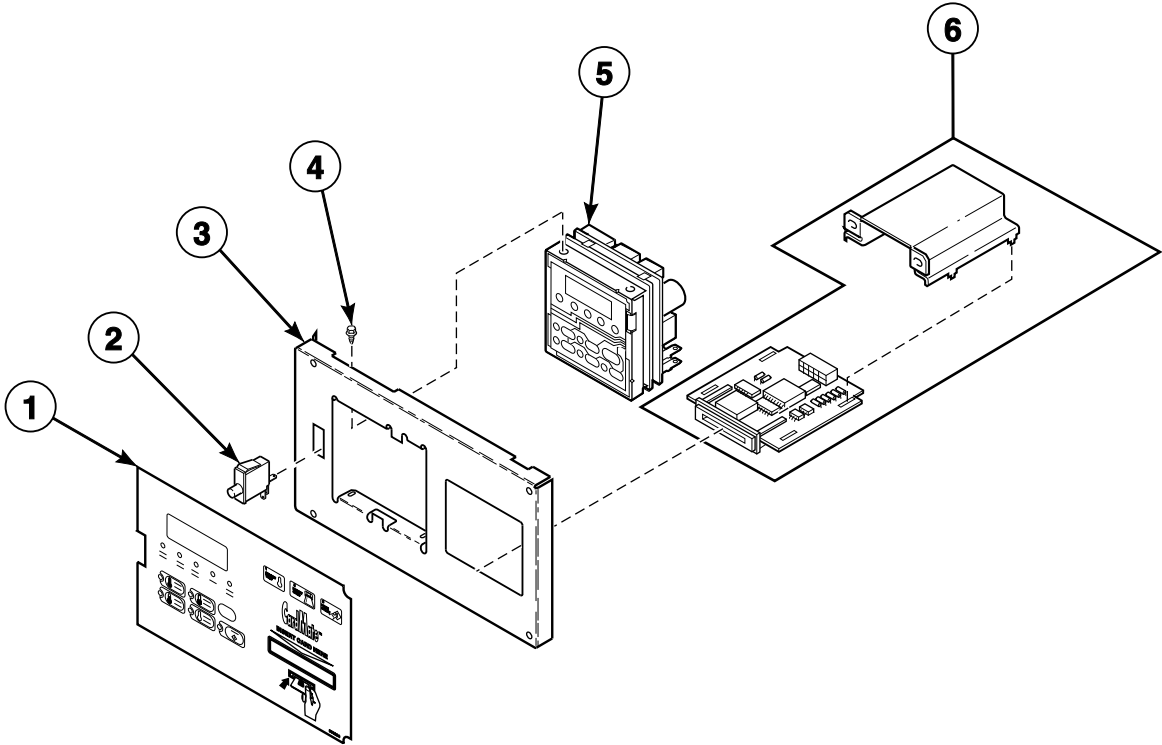


T478PZ3A\_70184901

ST2 P7

# Card Reader for NetMaster Models

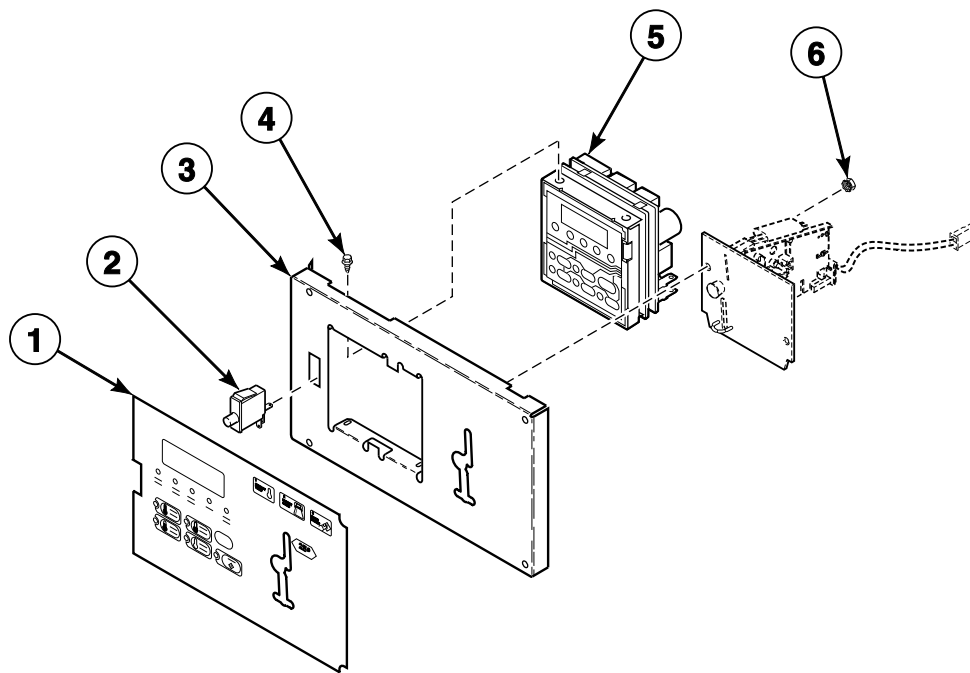
J and S Models with NR, NY, ZR and ZY Control Suffixes



TMB369P\_70184901

# Coin Drop Components for NetMaster Models

J and S Models with NC, NX, ZC and ZX Control Suffixes

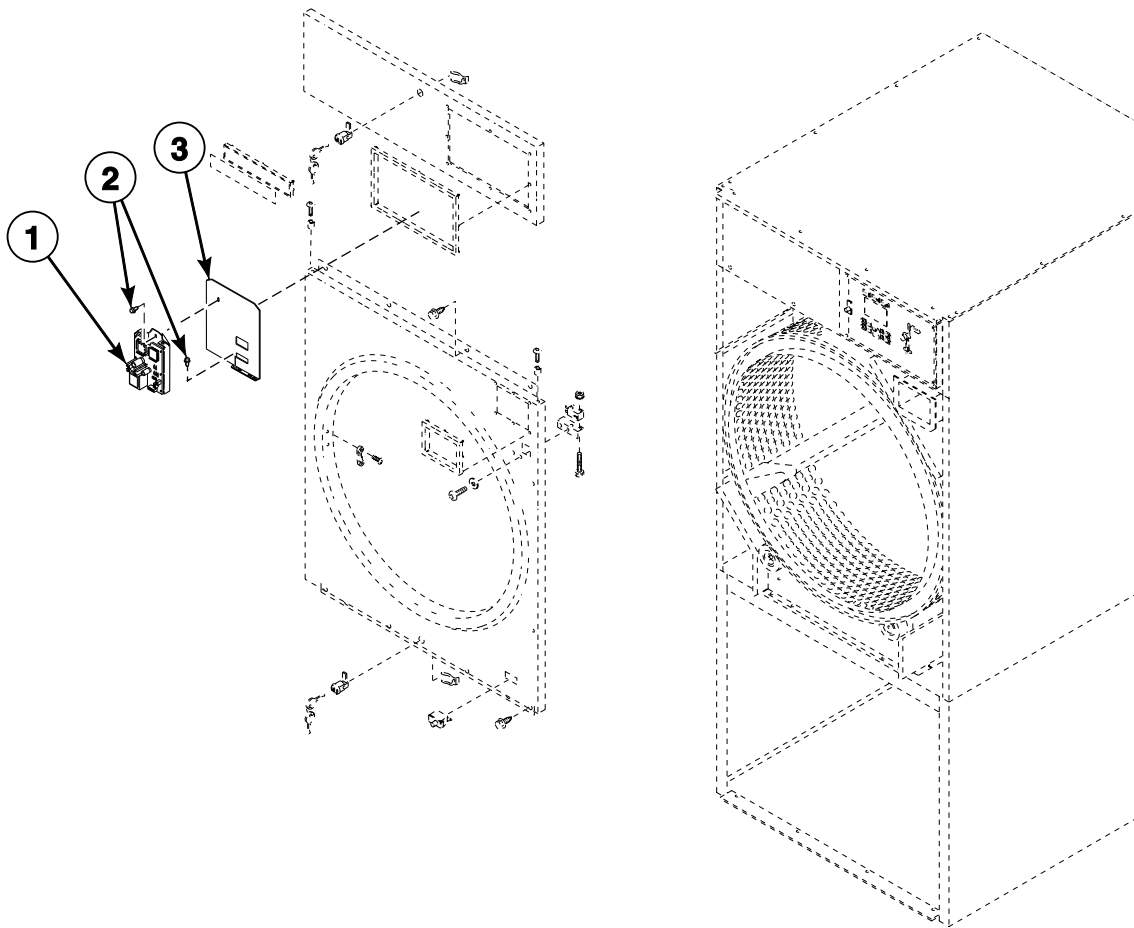


TMB370P\_70184901



# Network Board for NetMaster Models

J and S Models with ZC, ZR, ZX and ZT Control Suffixes

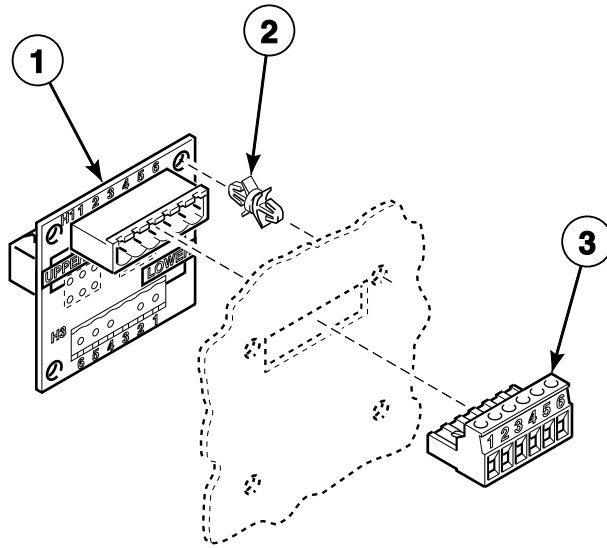


TMB375P\_70184901

ST2 P10

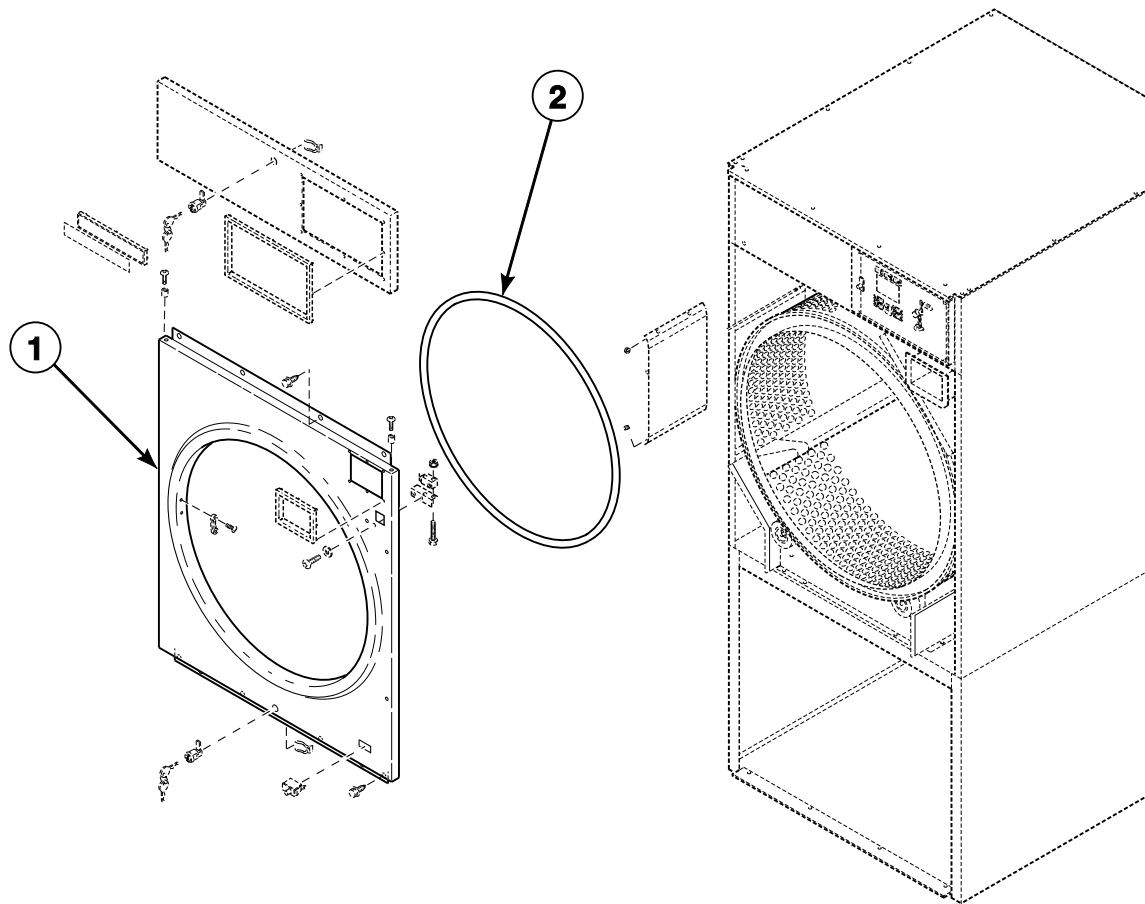
# Communication Board for NetMaster Models

J and S Models with ZC, ZR, ZX and ZY Control Suffixes



TMB1935P\_70184901

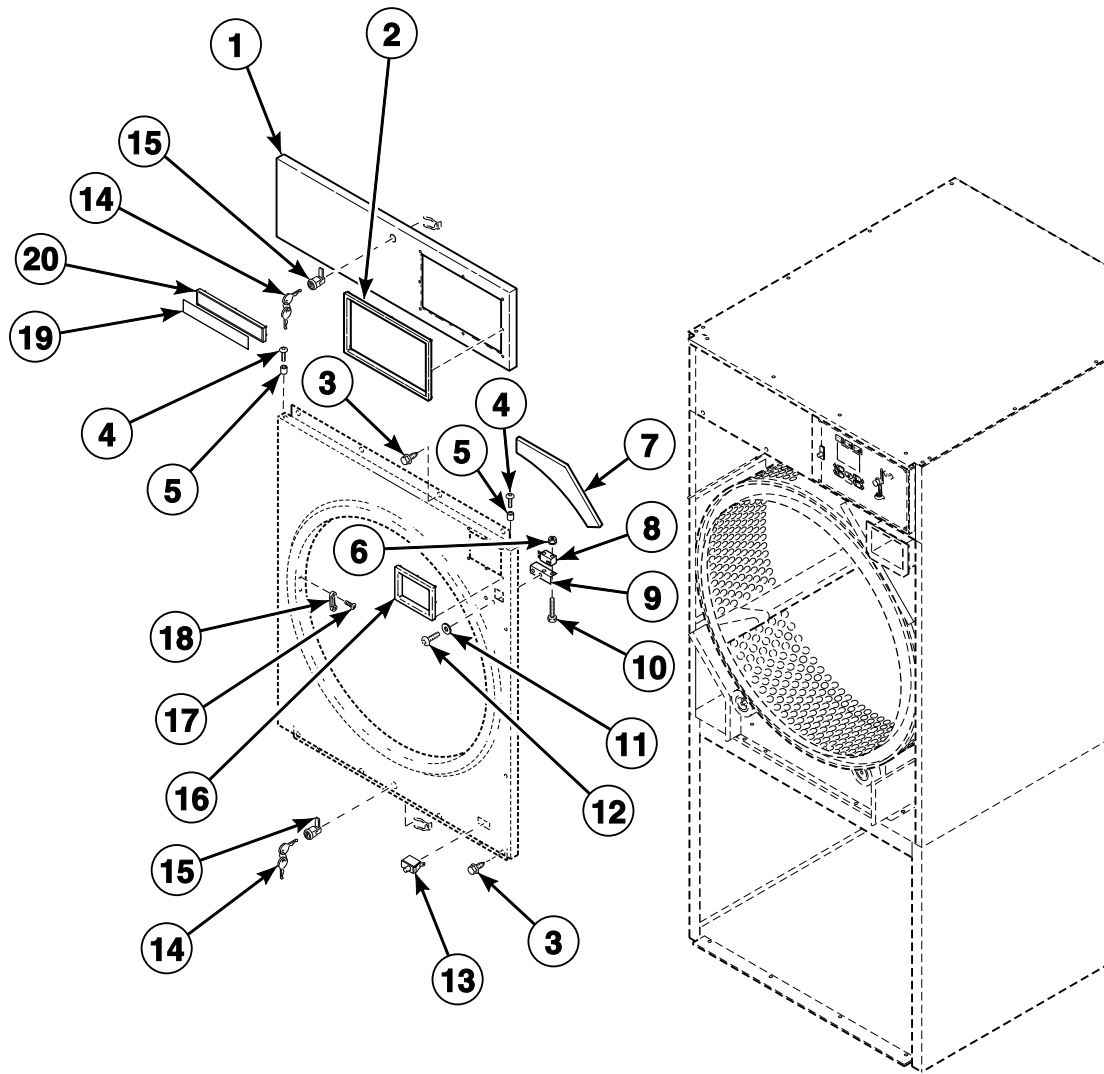
## Cabinet Front Components (Drawing 1 of 2)



TMB1855P\_70184901

ST2 P12

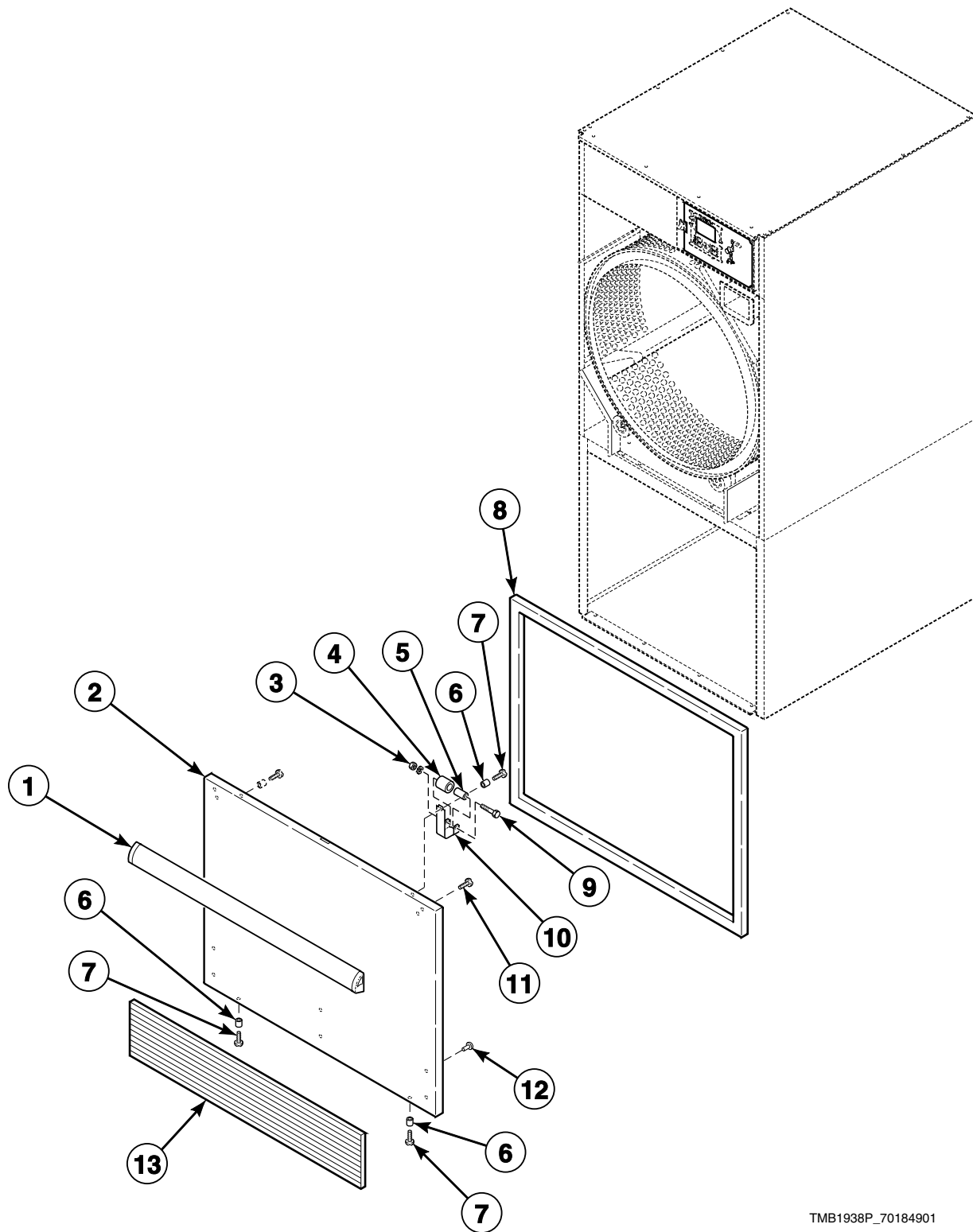
## Cabinet Front Components (Drawing 2 of 2)



TMB1859P\_70184901

ST2 P13

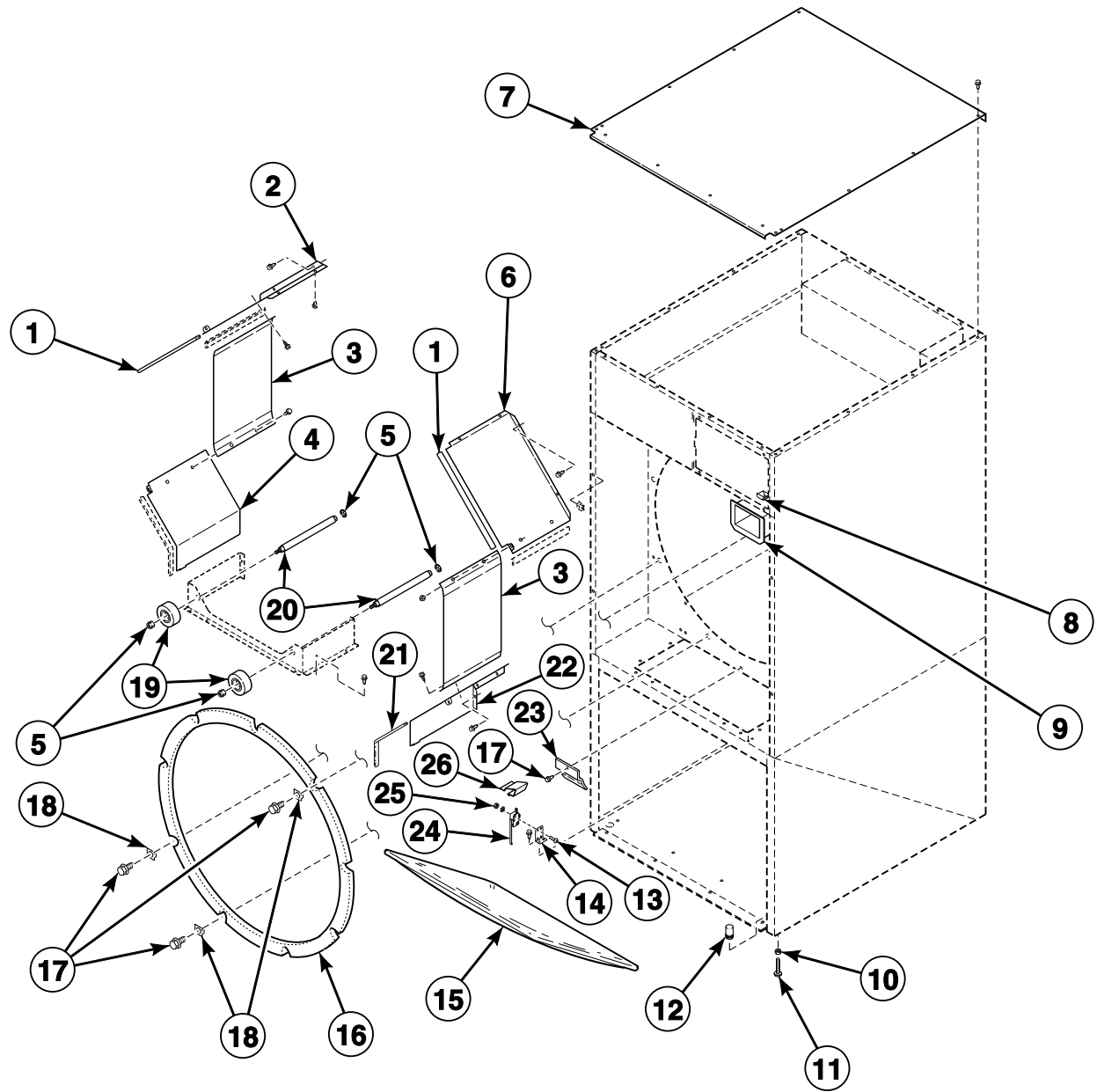
## Lower Cabinet Front Components



TMB1938P\_70184901

ST2 P14

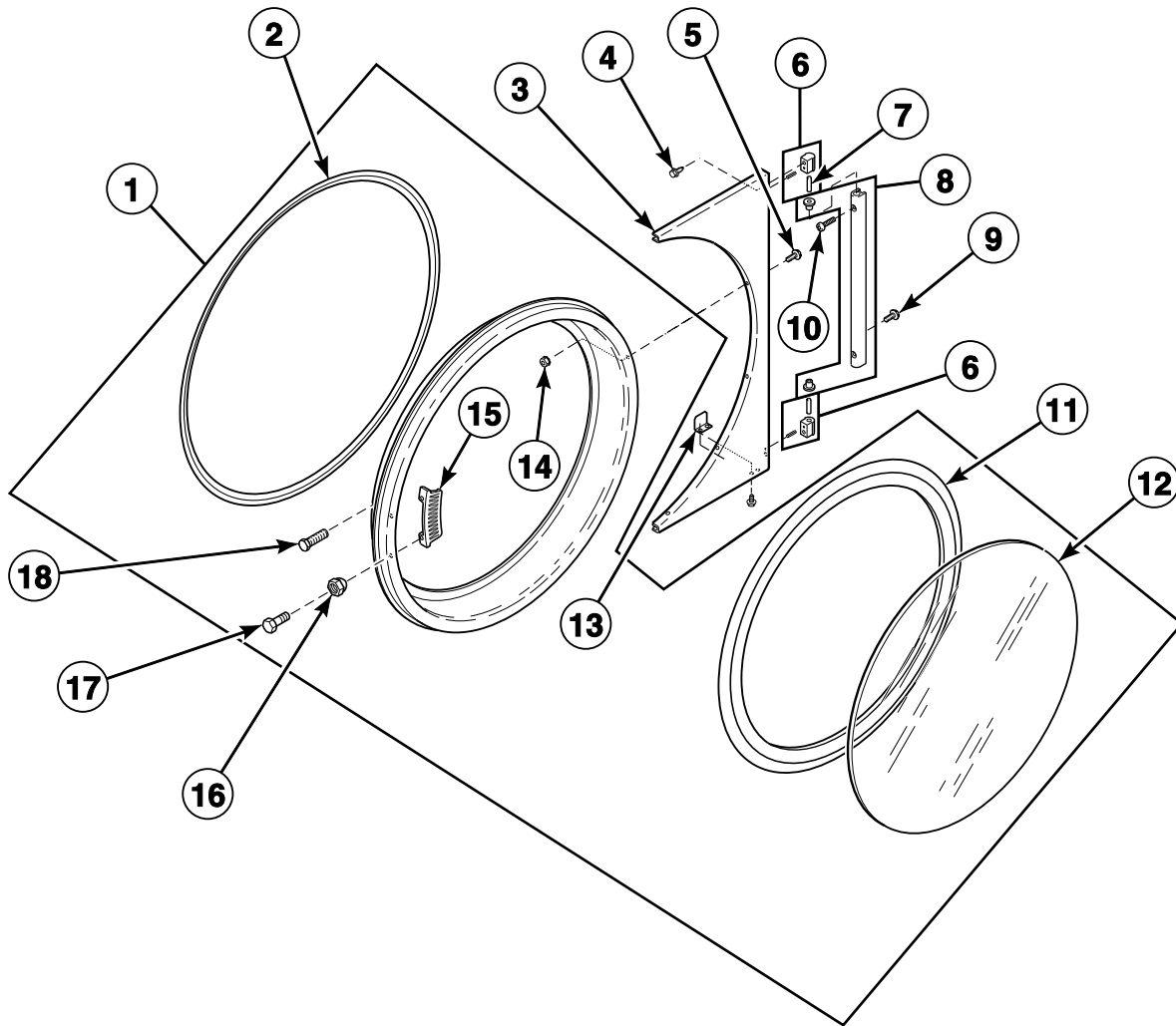
# Cabinet Components



TMB1856P\_70184901

ST2 P15

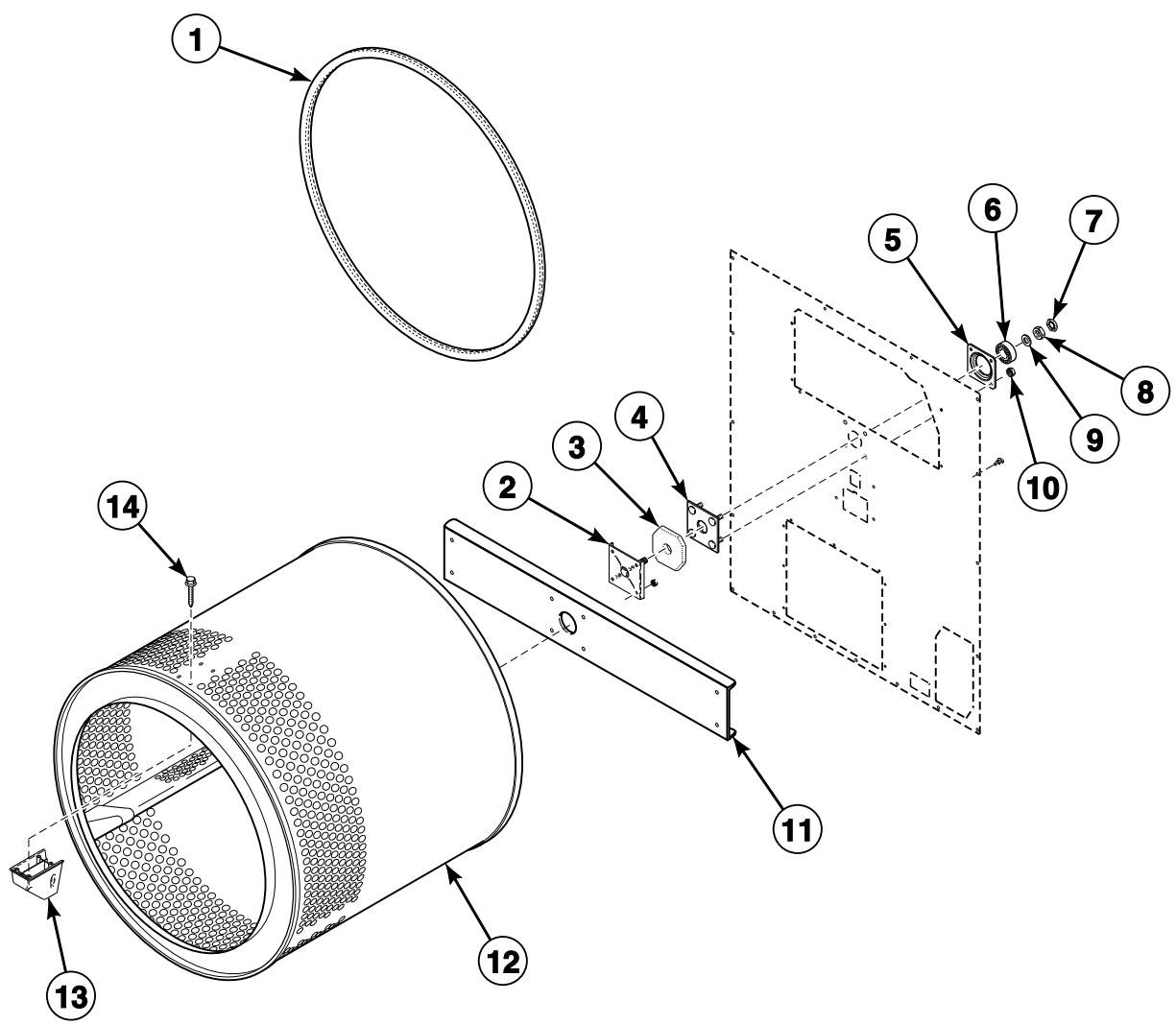
## Door and Hinge Components



TMB1939P\_70184901

ST2 P16

Cylinder Components - Models Through Serial No. 9712xxxx

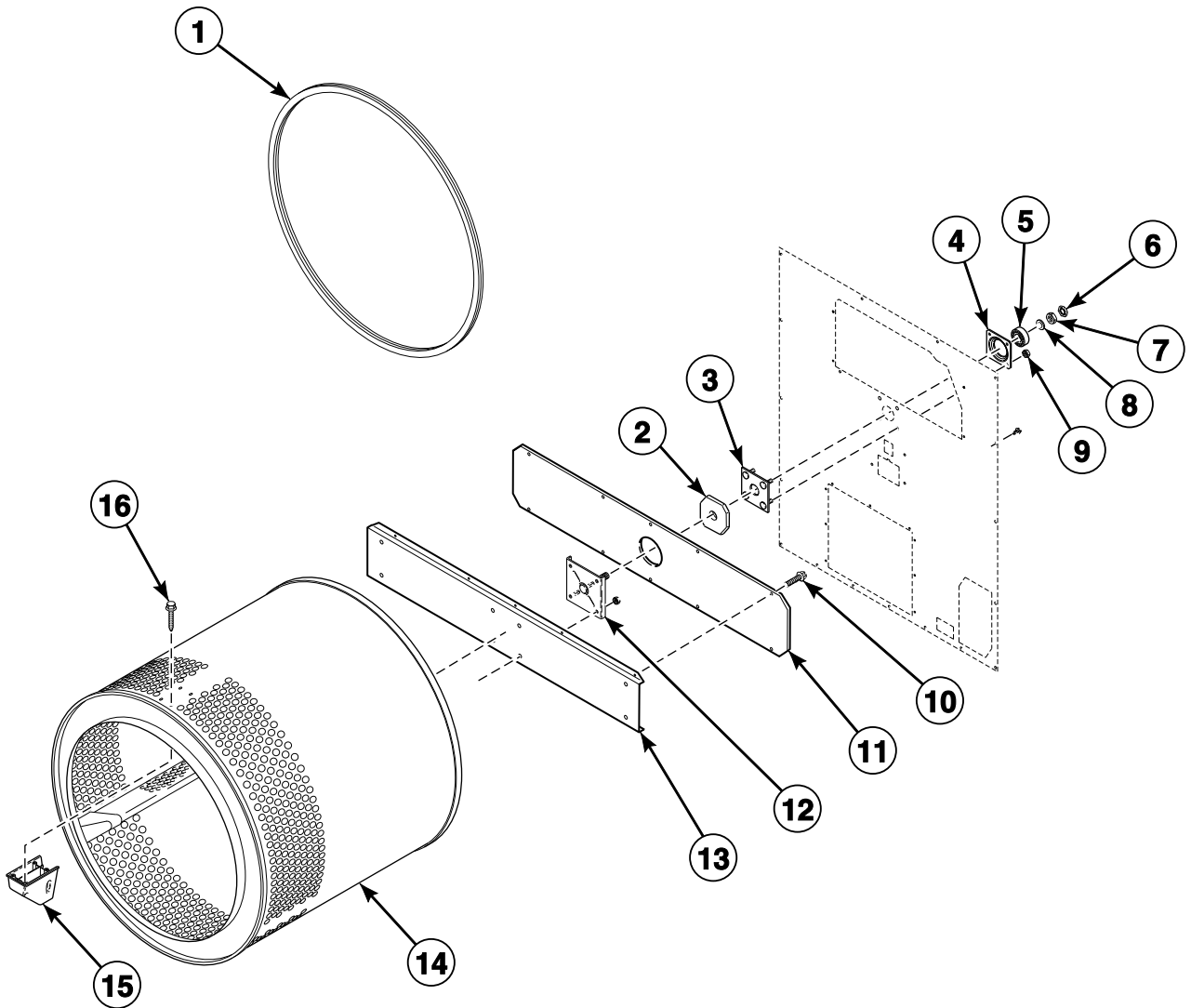


TMB2463P\_70184901

ST2 P17



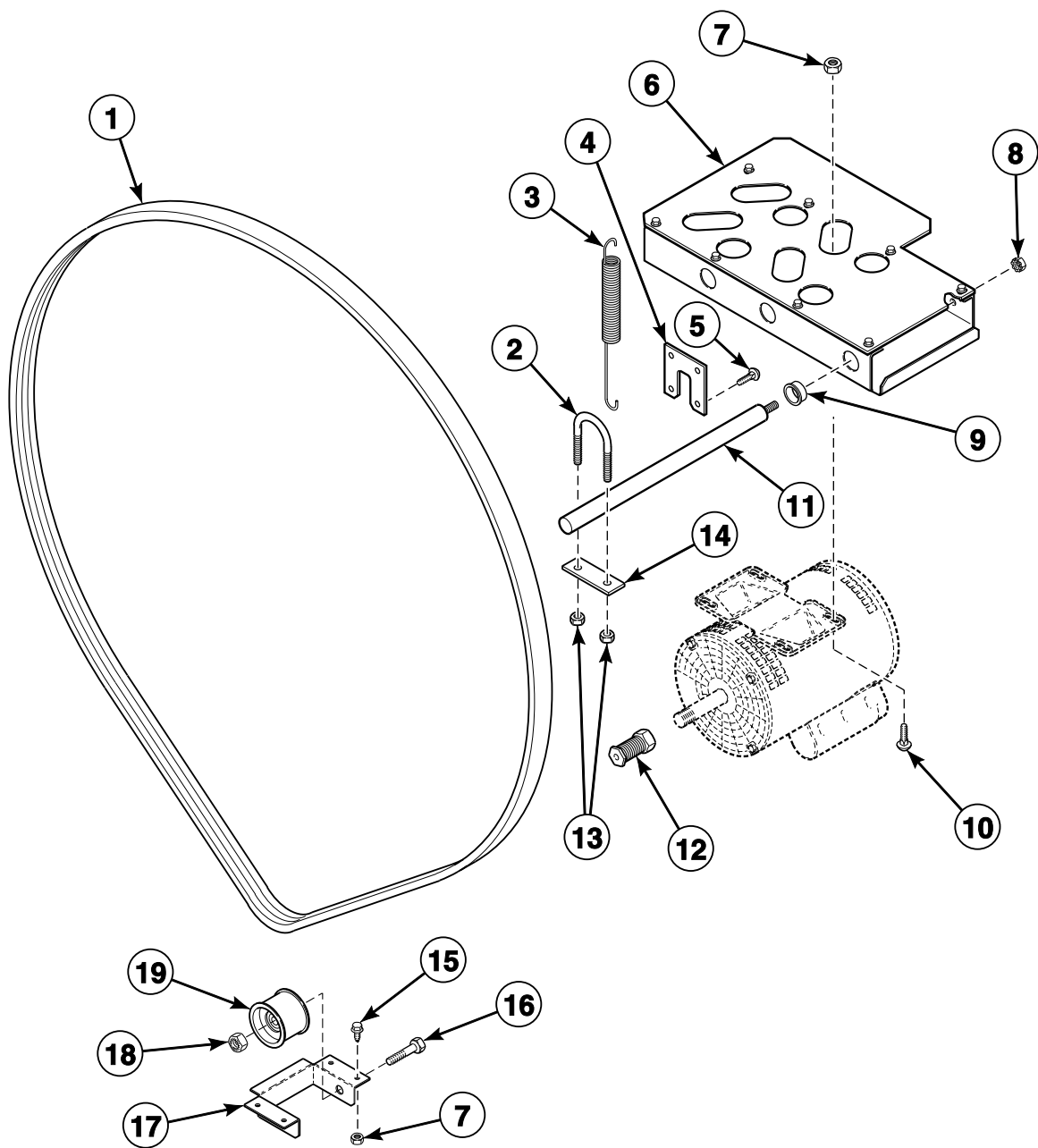
## Cylinder Components - Models Starting Serial No. 9712xxxx



TMB2464P\_70184901

ST2 P18

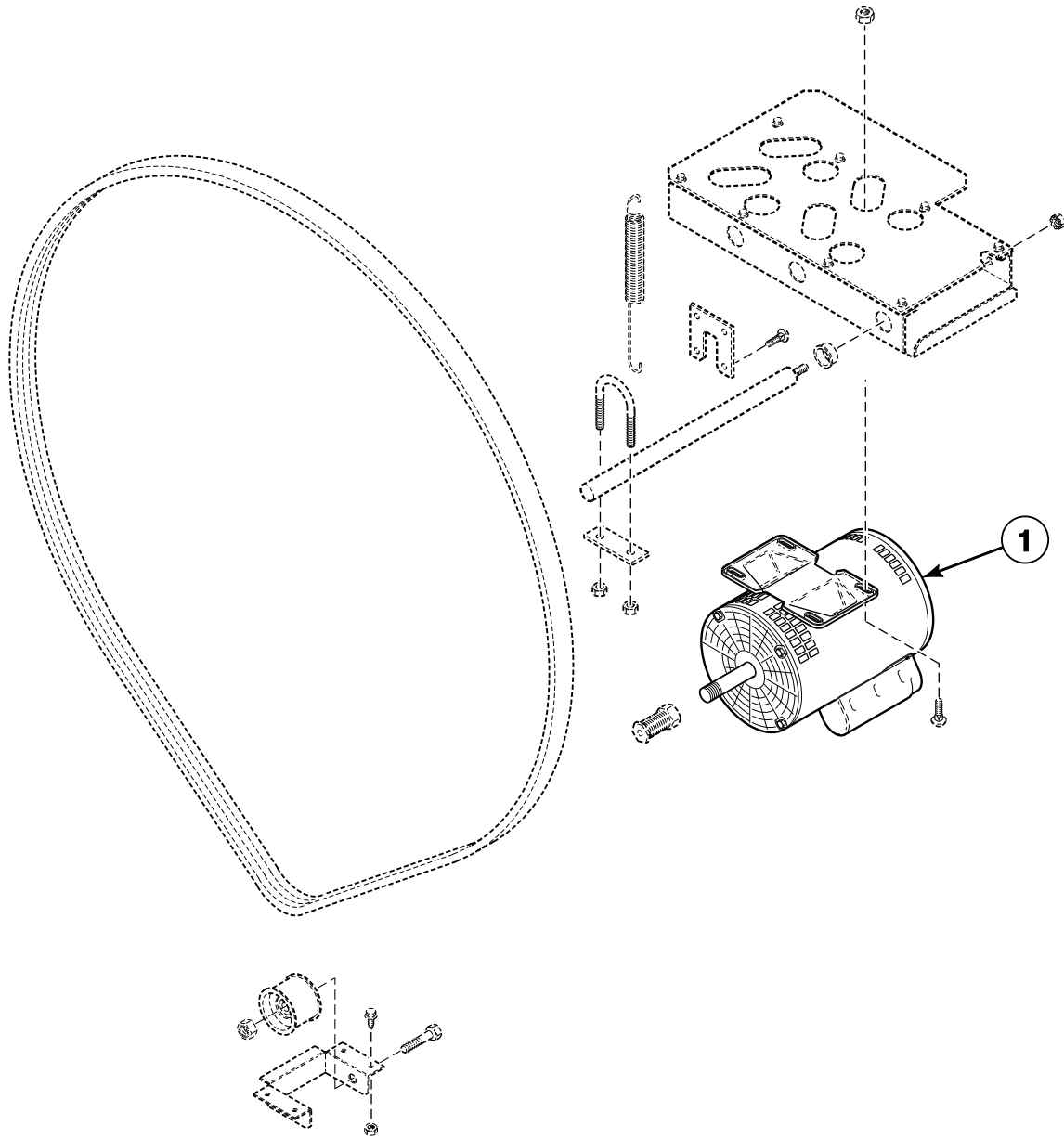
# Drive Motor Components



TMB1857P\_70184901

ST2 P19

## Drive Motors

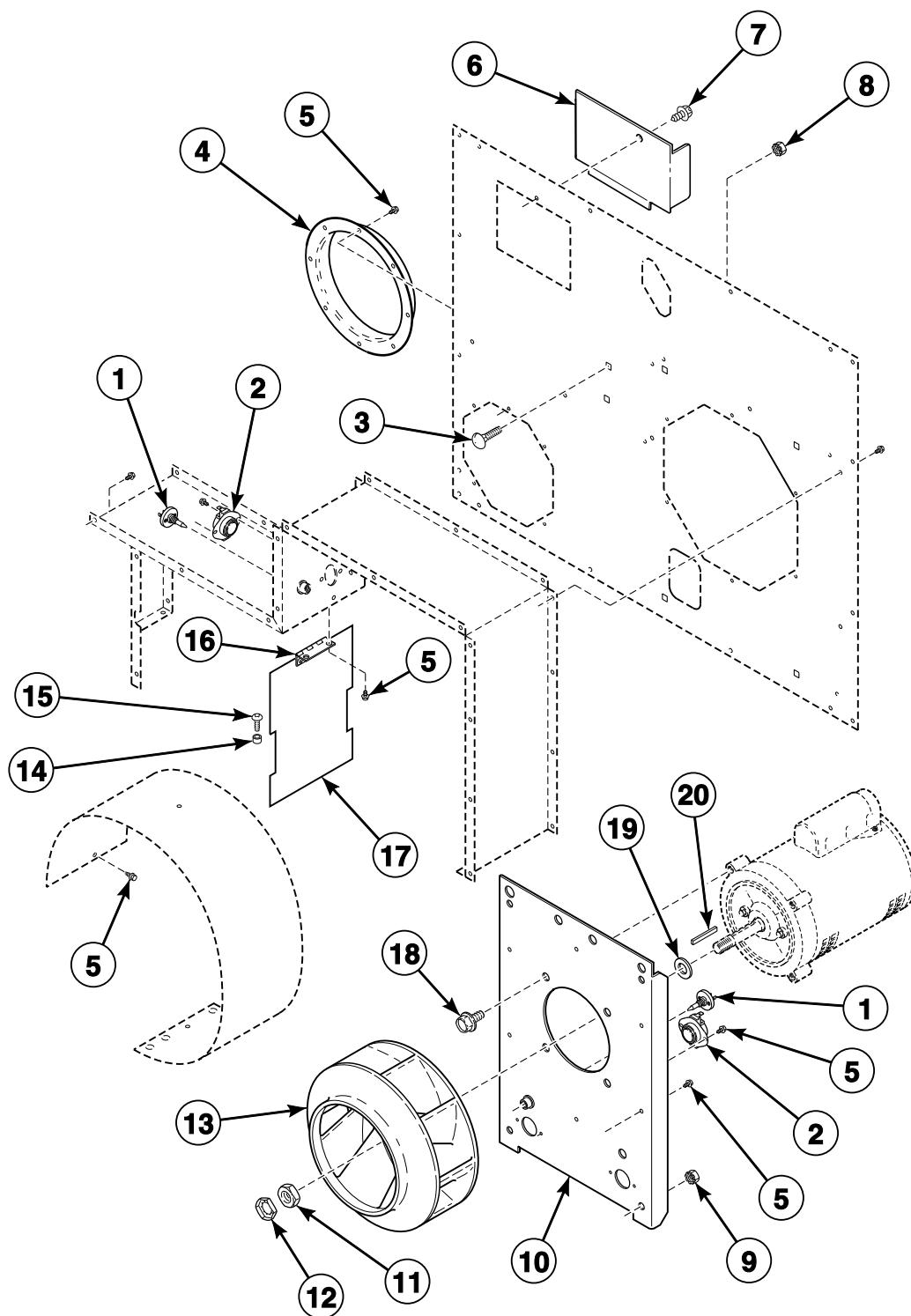


TMB1857PA\_70184901

ST2 P20

# ST2 P21

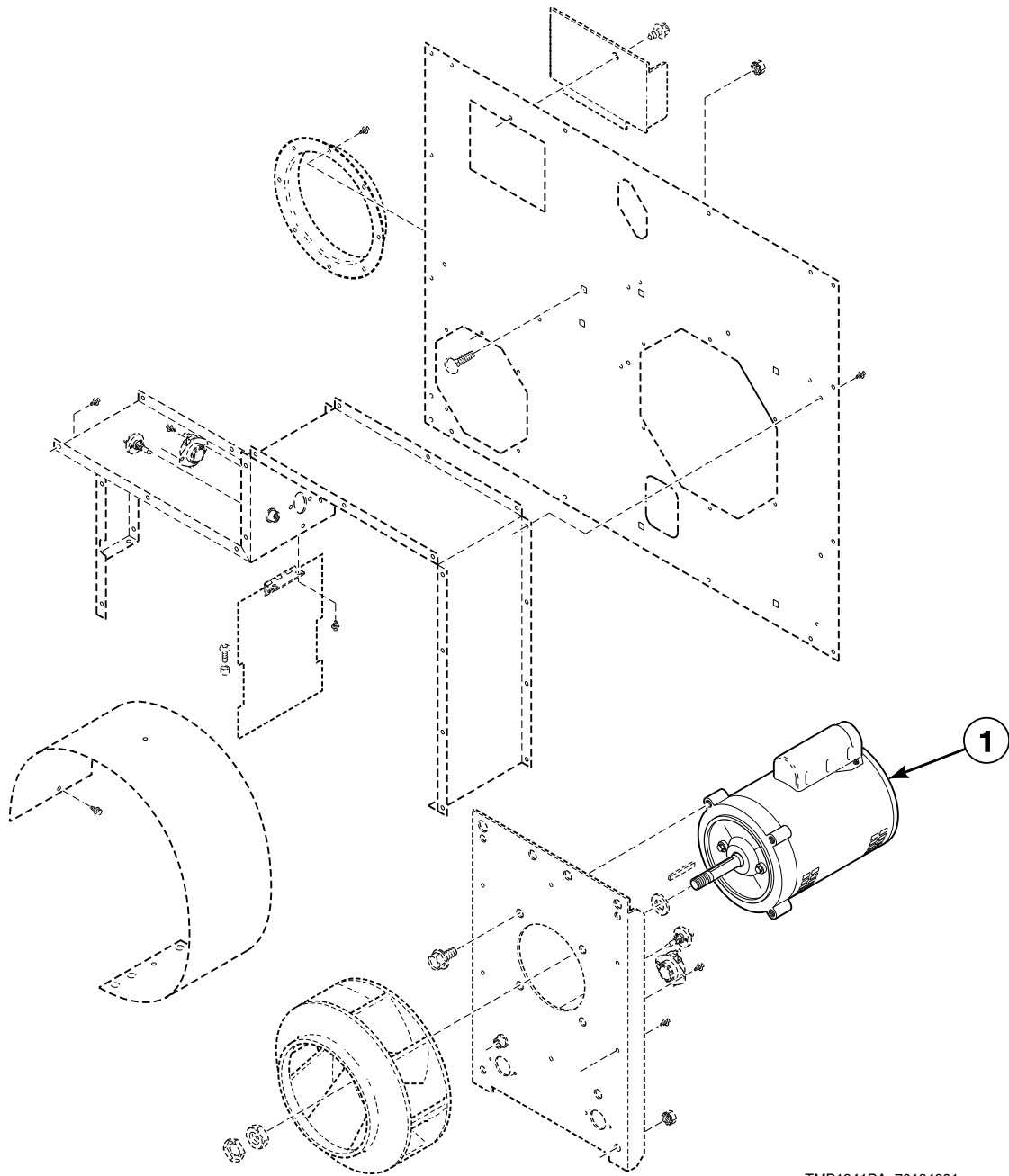
# Blower Components



TMB1941P\_70184901

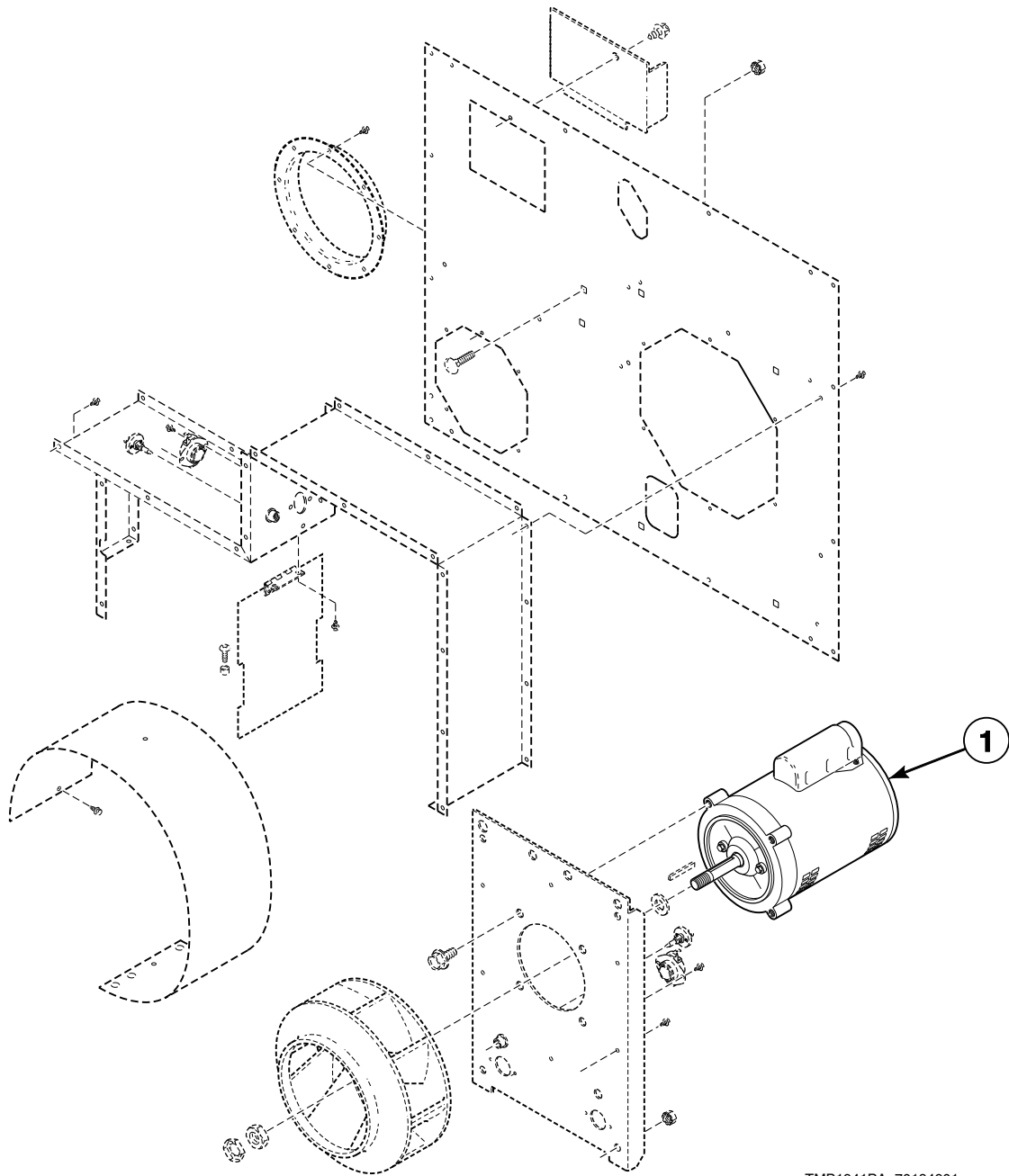
ST2 P22

## Fan Motors for 0220 and 0270 Models



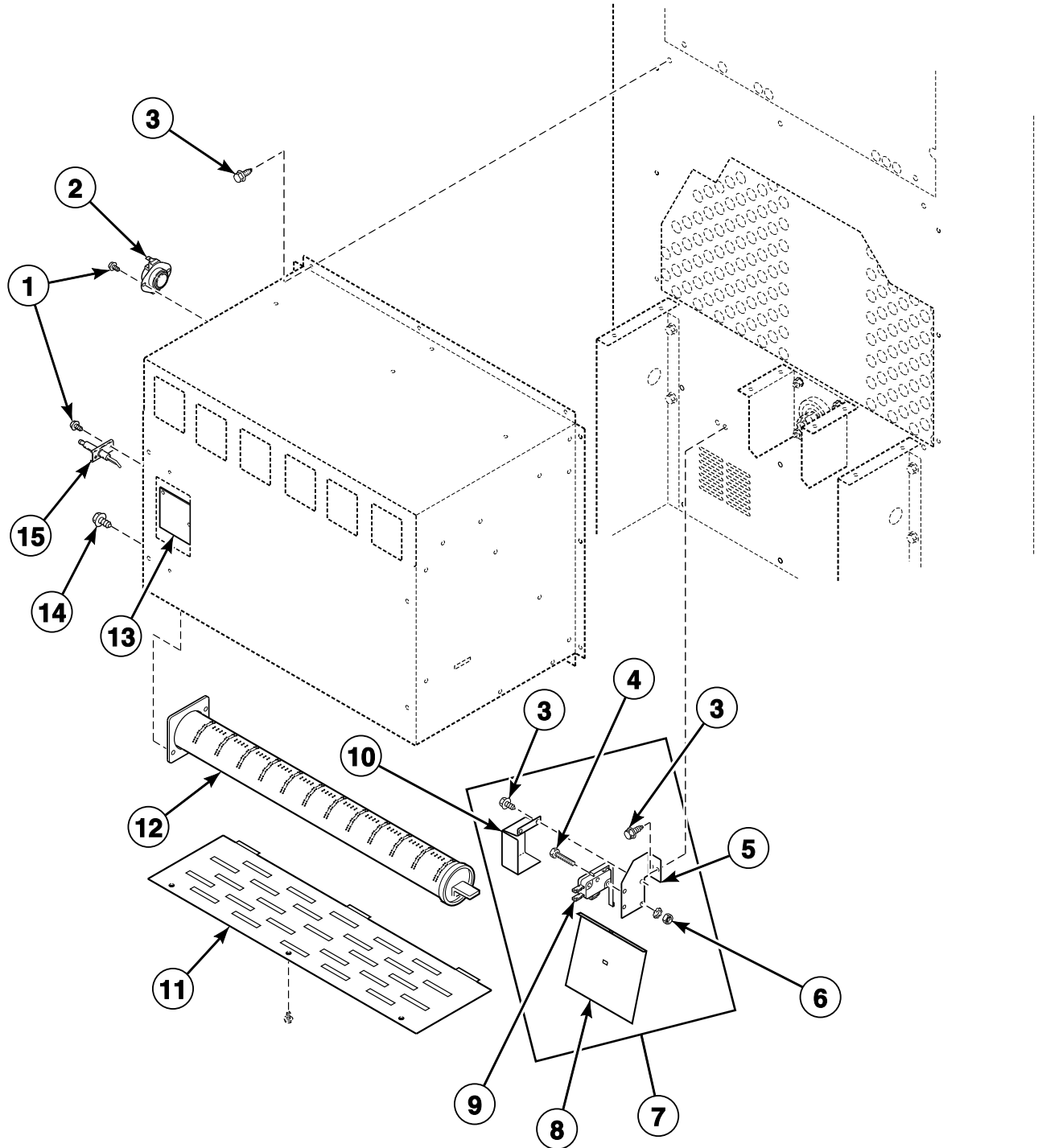
TMB1941PA\_70184901

## Fan Motors for 0350 Models



TMB1941PA\_70184901

# Airflow Switch and Gas Burner Components

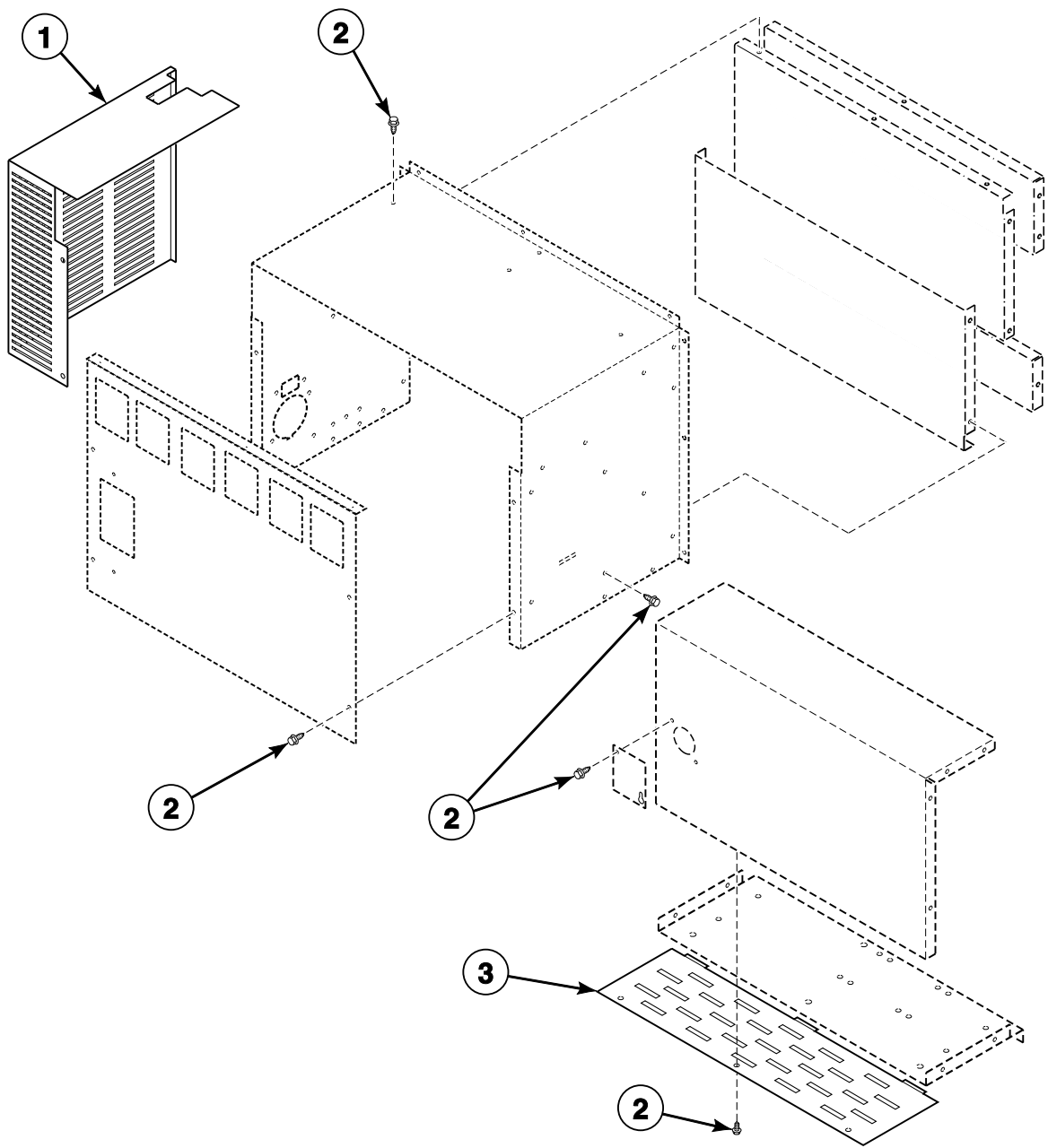


T500PZ3B\_70184901

ST2 P25

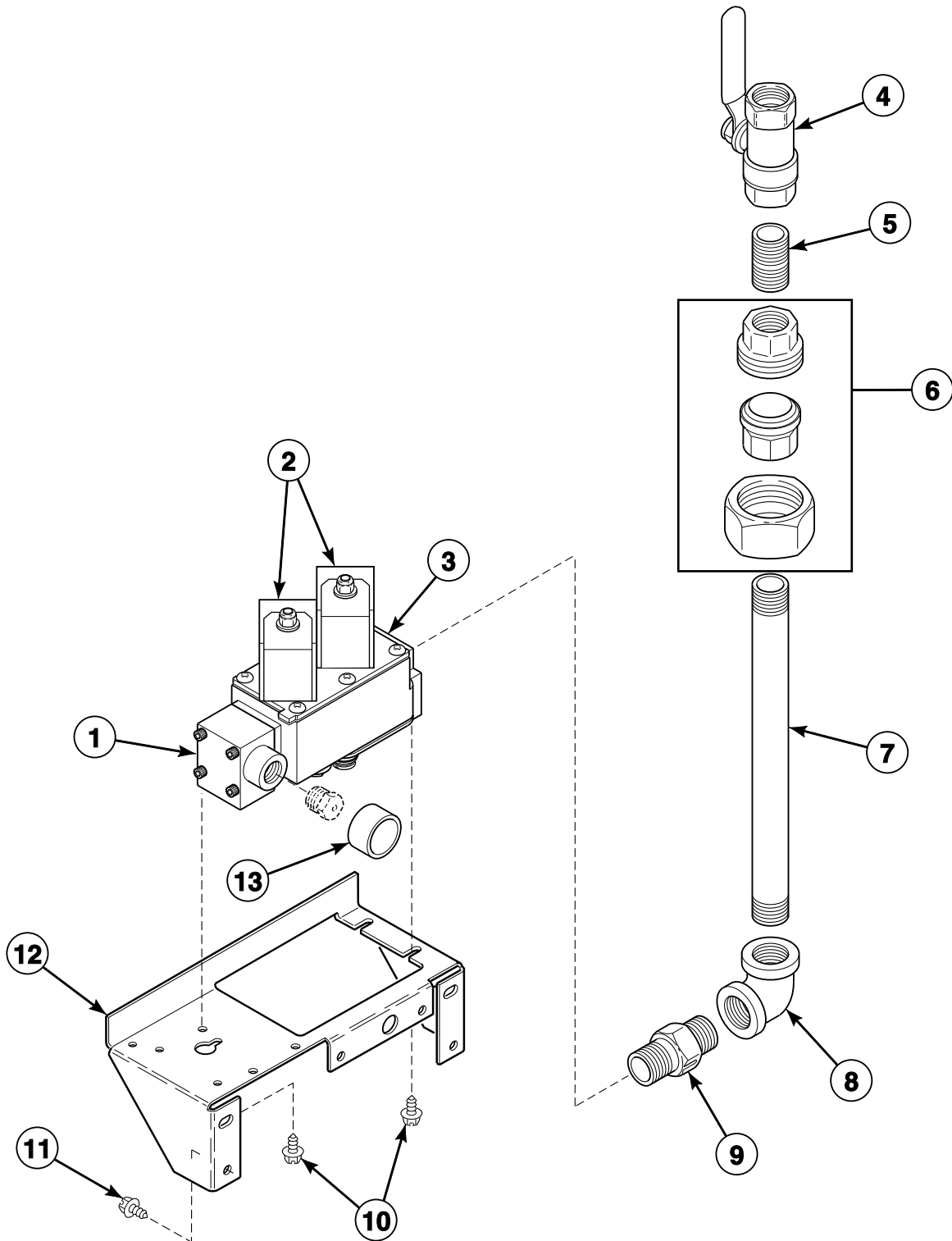


# Gas Burner Housing



T465P\_70184901

## Gas Valve and Piping

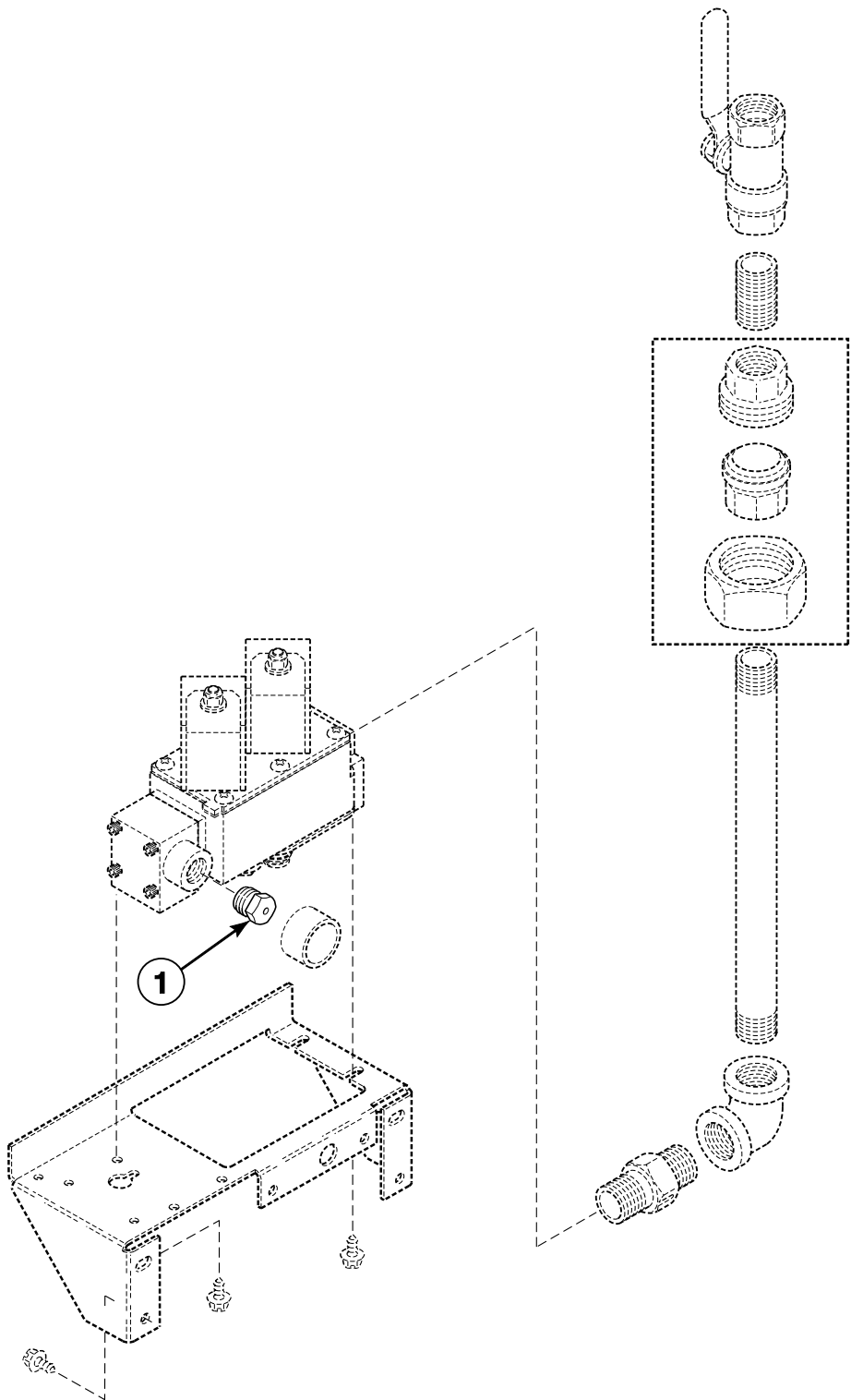


TMB1942P\_70184901

ST2 P27

# Burner Orifice for Liquid Petroleum Gas

Non-CE Models

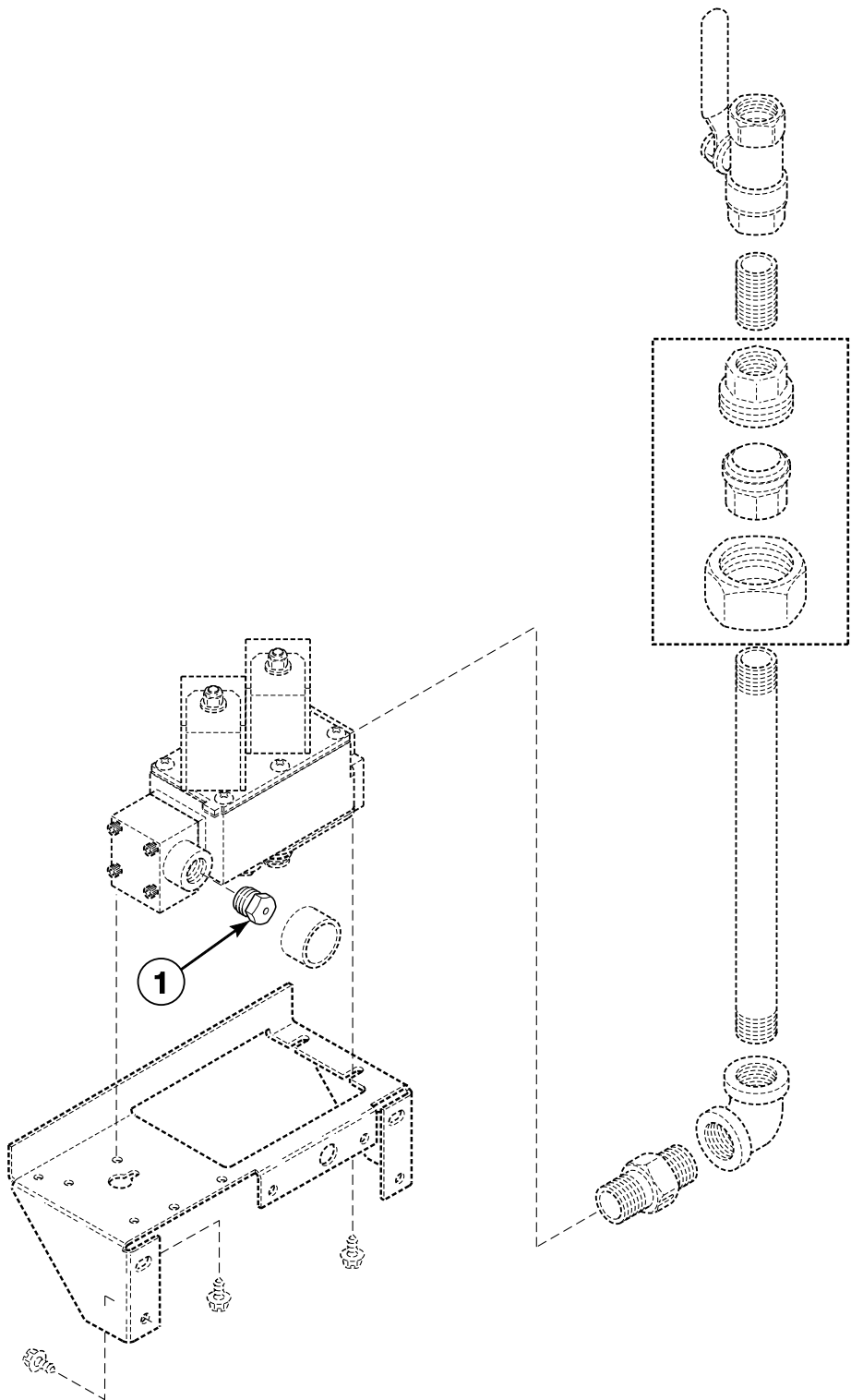


TMB1942PA\_70184901

ST2 P28

# Burner Orifice for Natural Gas

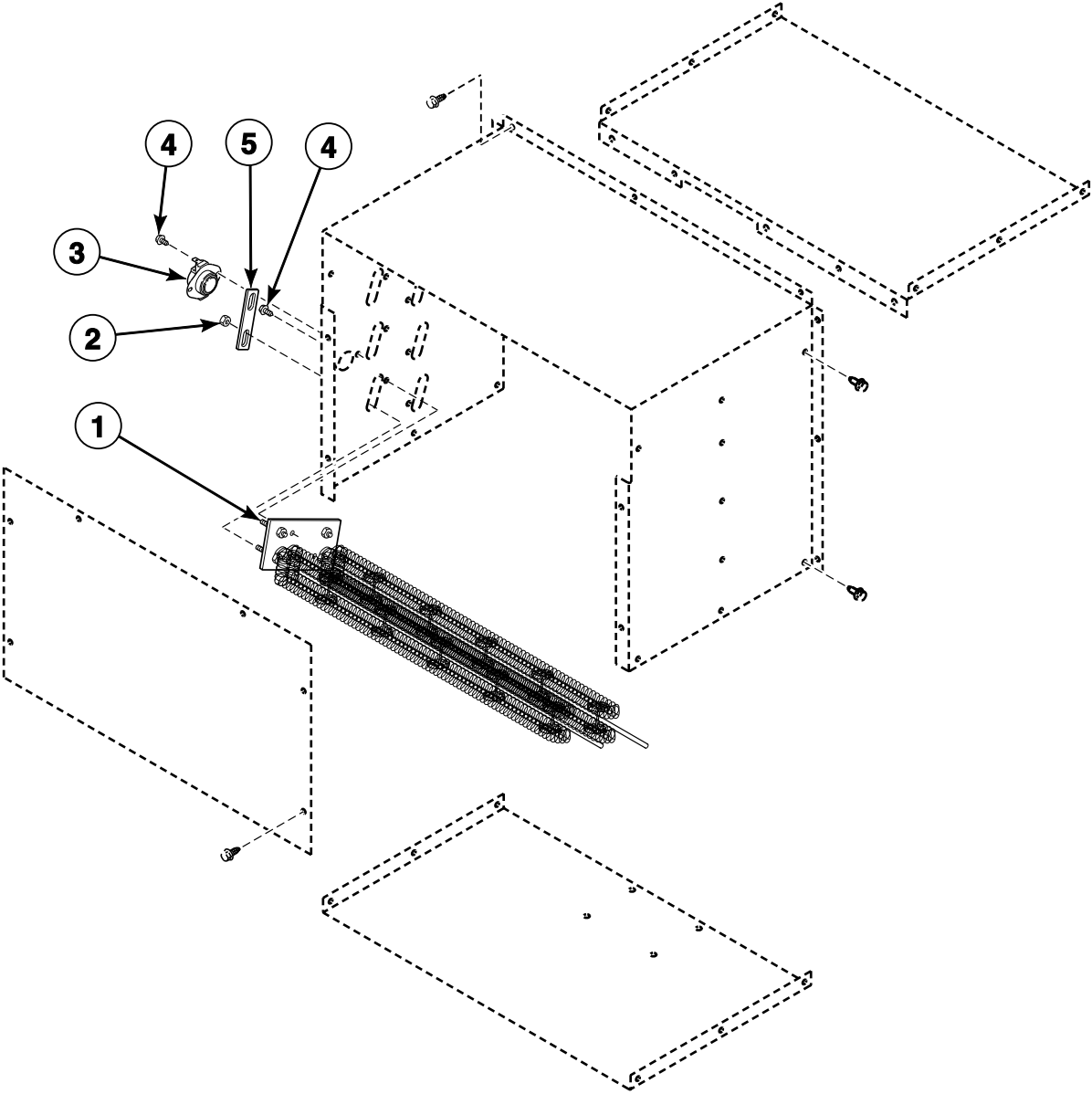
Non-CE Models



TMB1942PA\_70184901

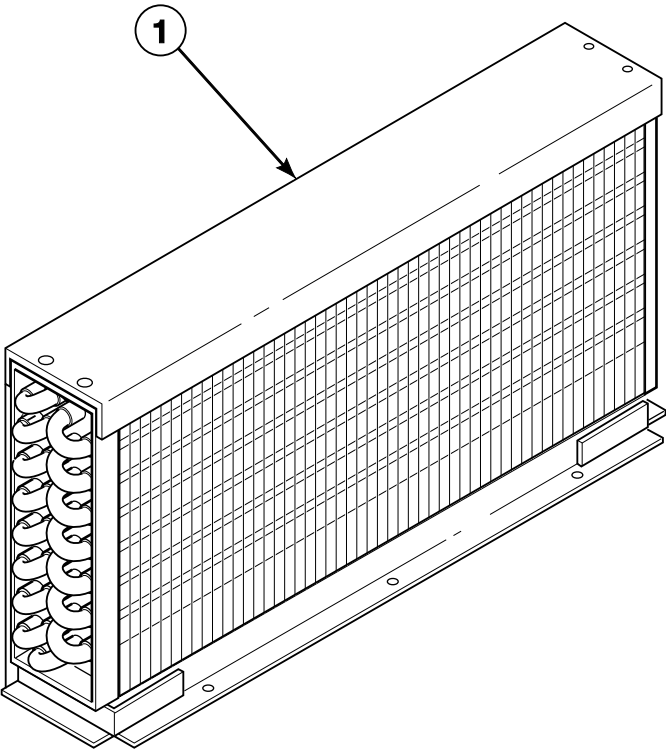
ST2 P29

# Electric Heater Components



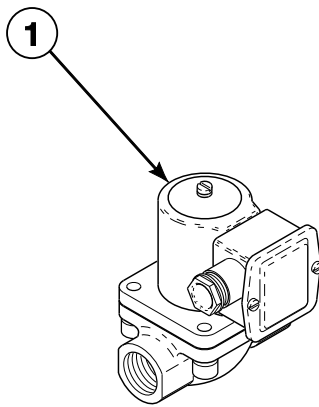
T443PZ3A\_70184901

Steam Heater



T479PZ3A\_70184901

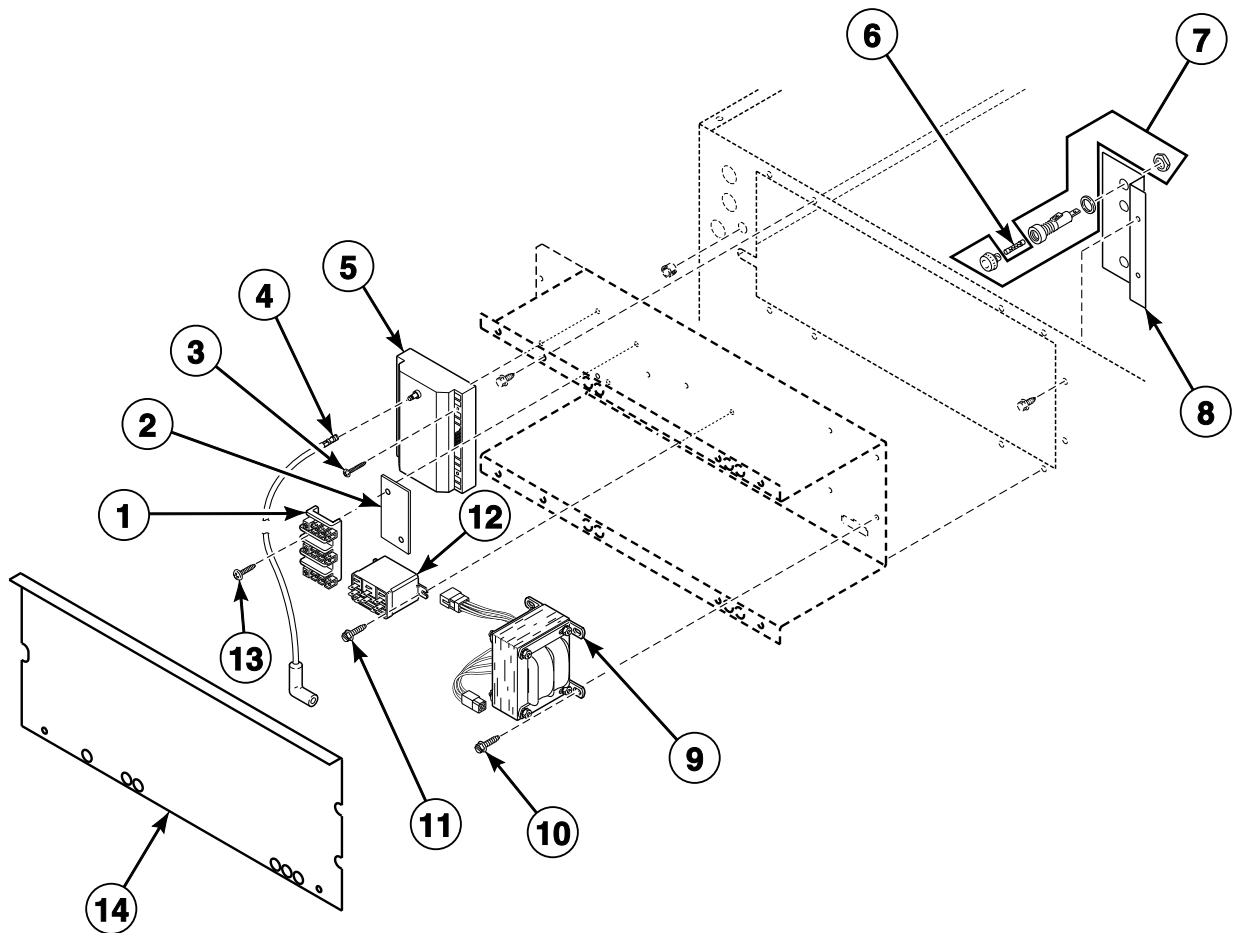
# Steam Solenoid Valve



T449PZ3A\_70184901

ST2 P32

## Control Tray - Non-CE and Non-Australian Gas Models

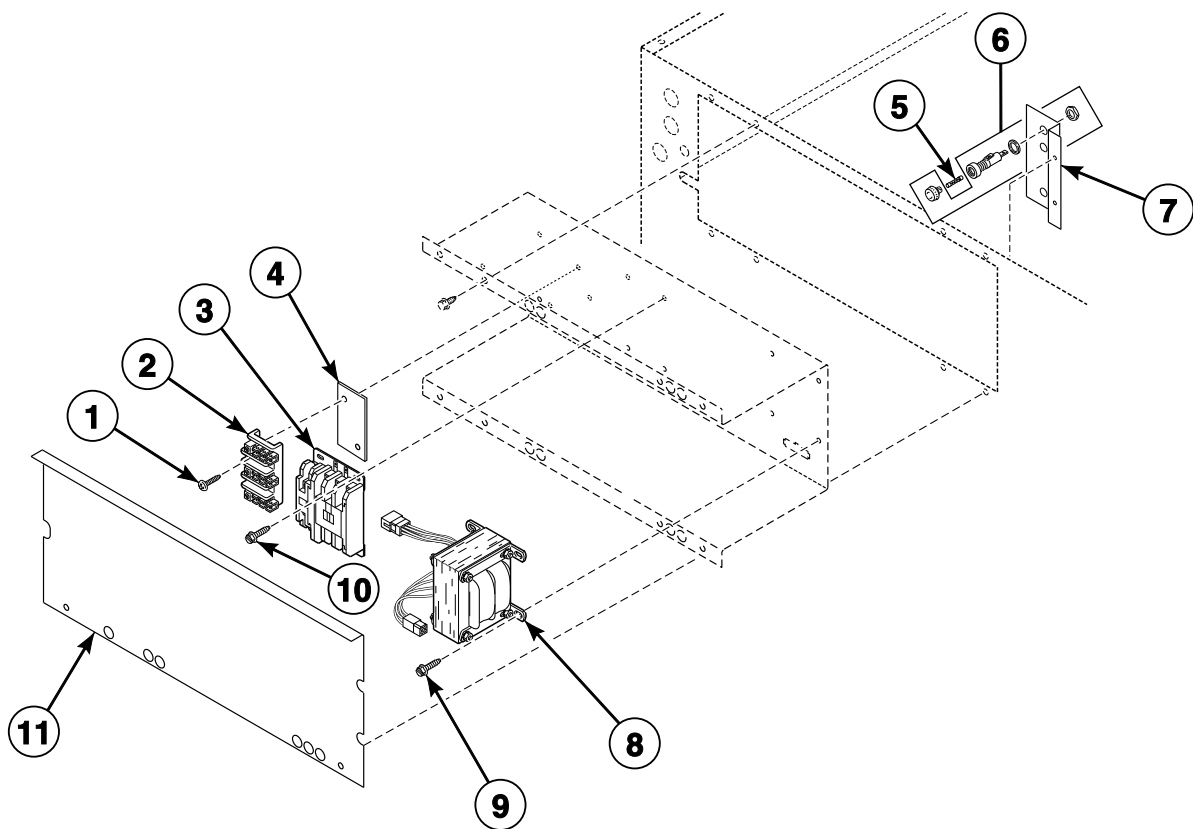


T408PZ3B\_70184901

ST2 P33



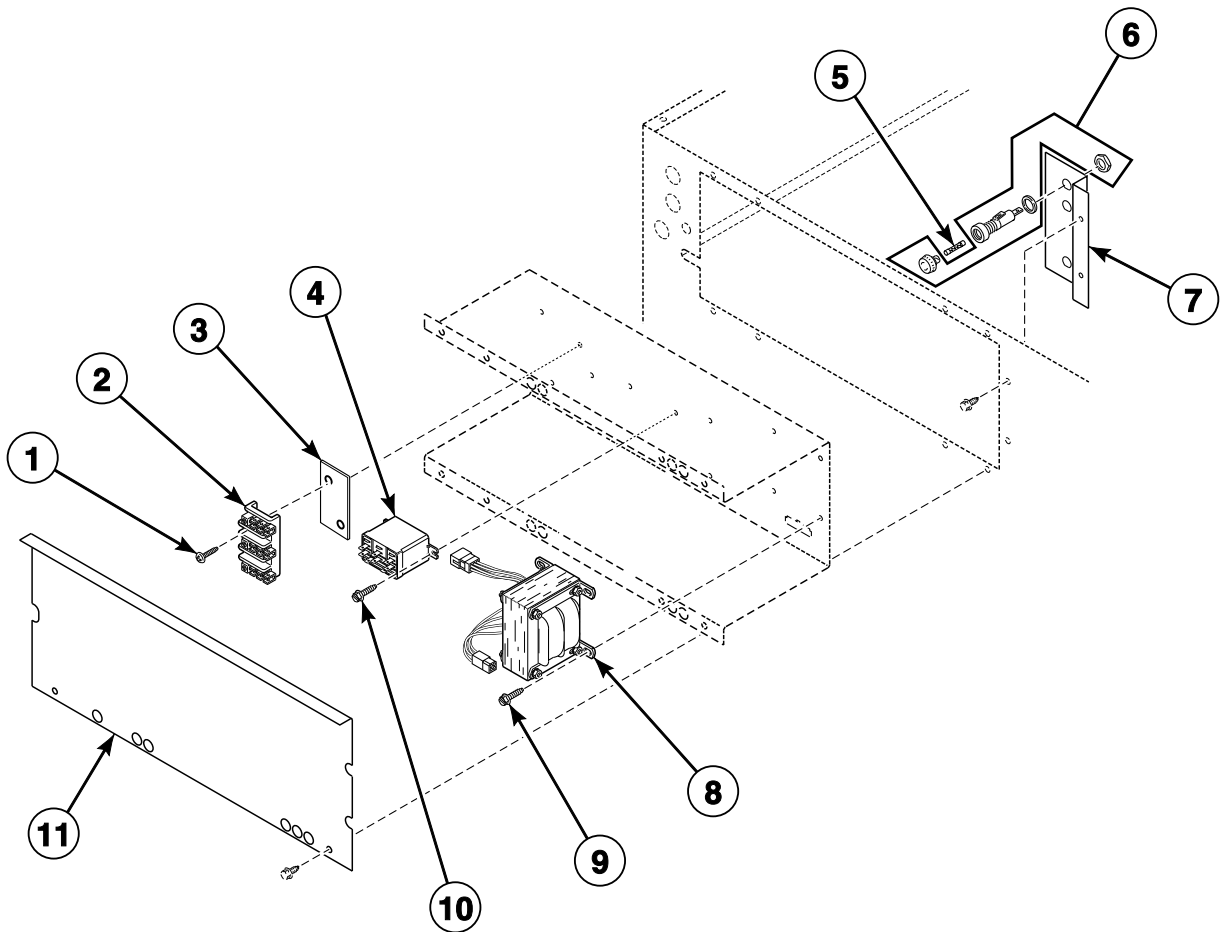
## Control Tray - Non-CE and Non-Australian Steam Models



T392PZ3B\_70184901

ST2 P34

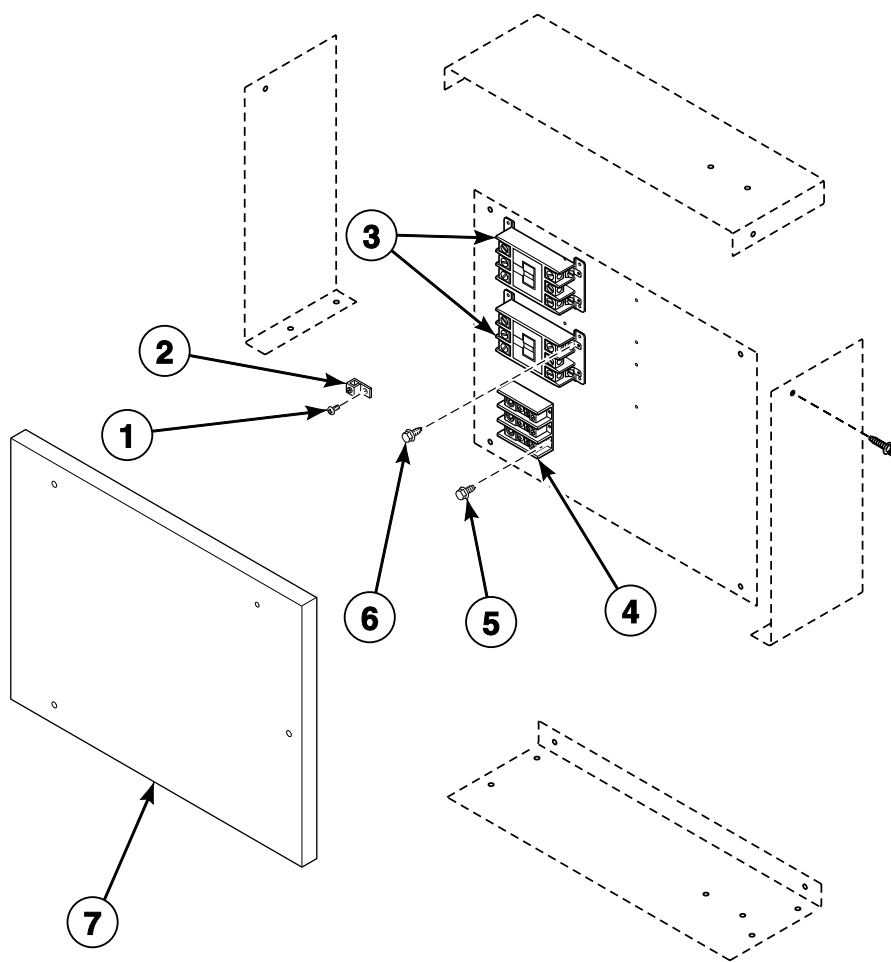
## Control Tray - Non-CE and Non-Australian Electric Models



T406PZ3D\_70184901

ST2 P35

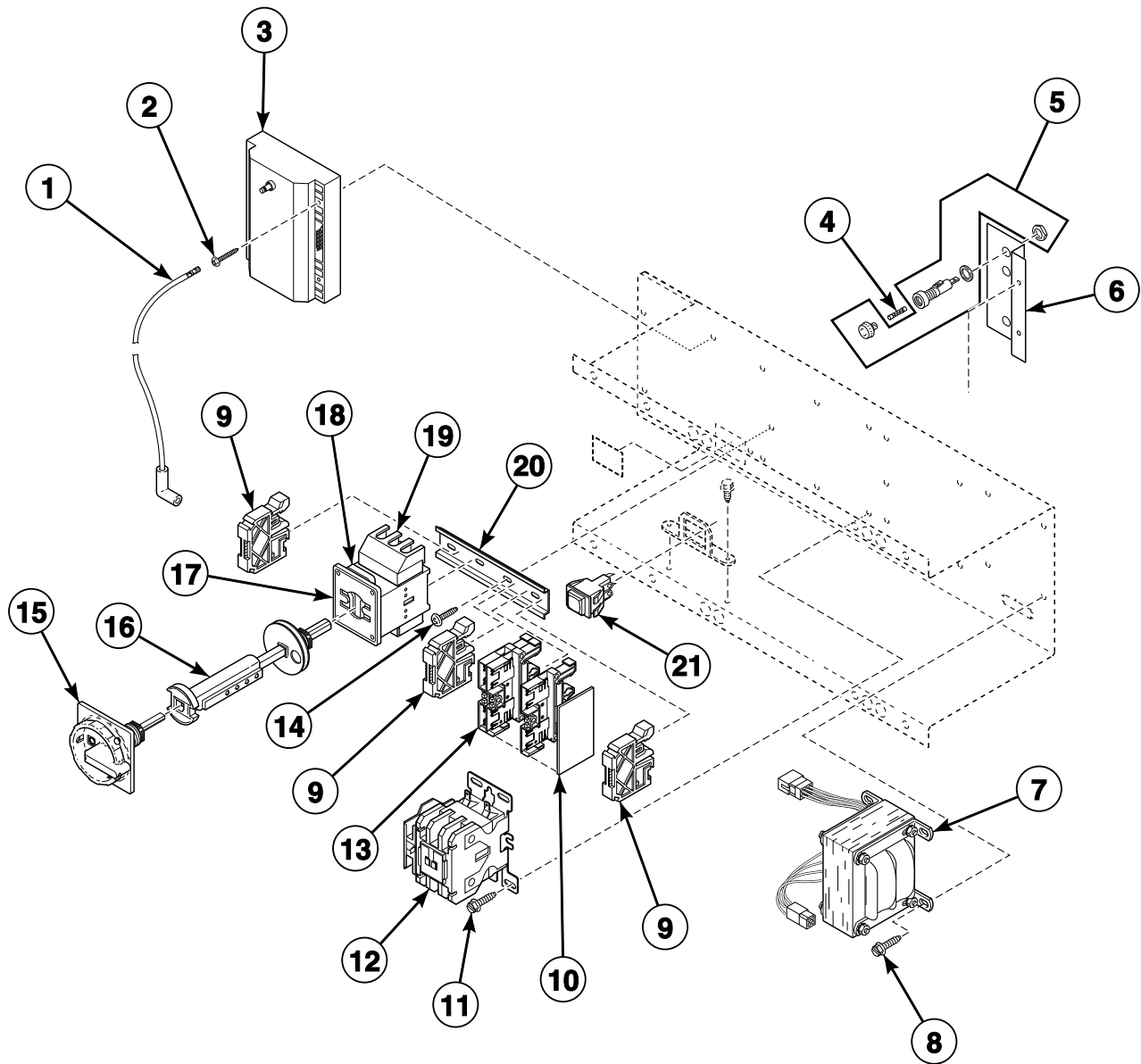
## Accessory Box - Non-CE and Non-Australian Electric Models



TMB1951P\_70184901

ST2 P36

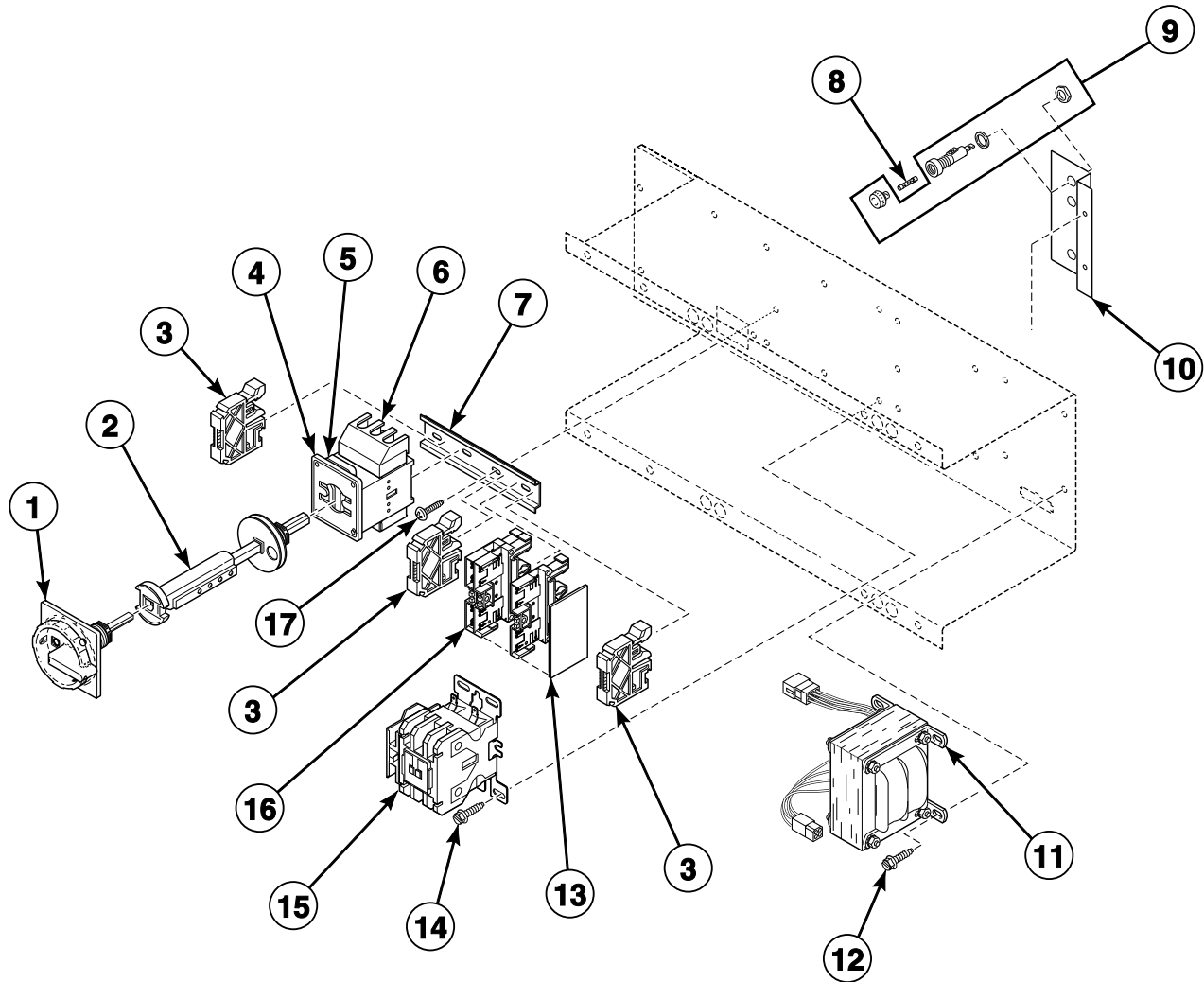
## Control Tray - CE and Australian Gas Models



T458PZ3A\_70184901

ST2 P37

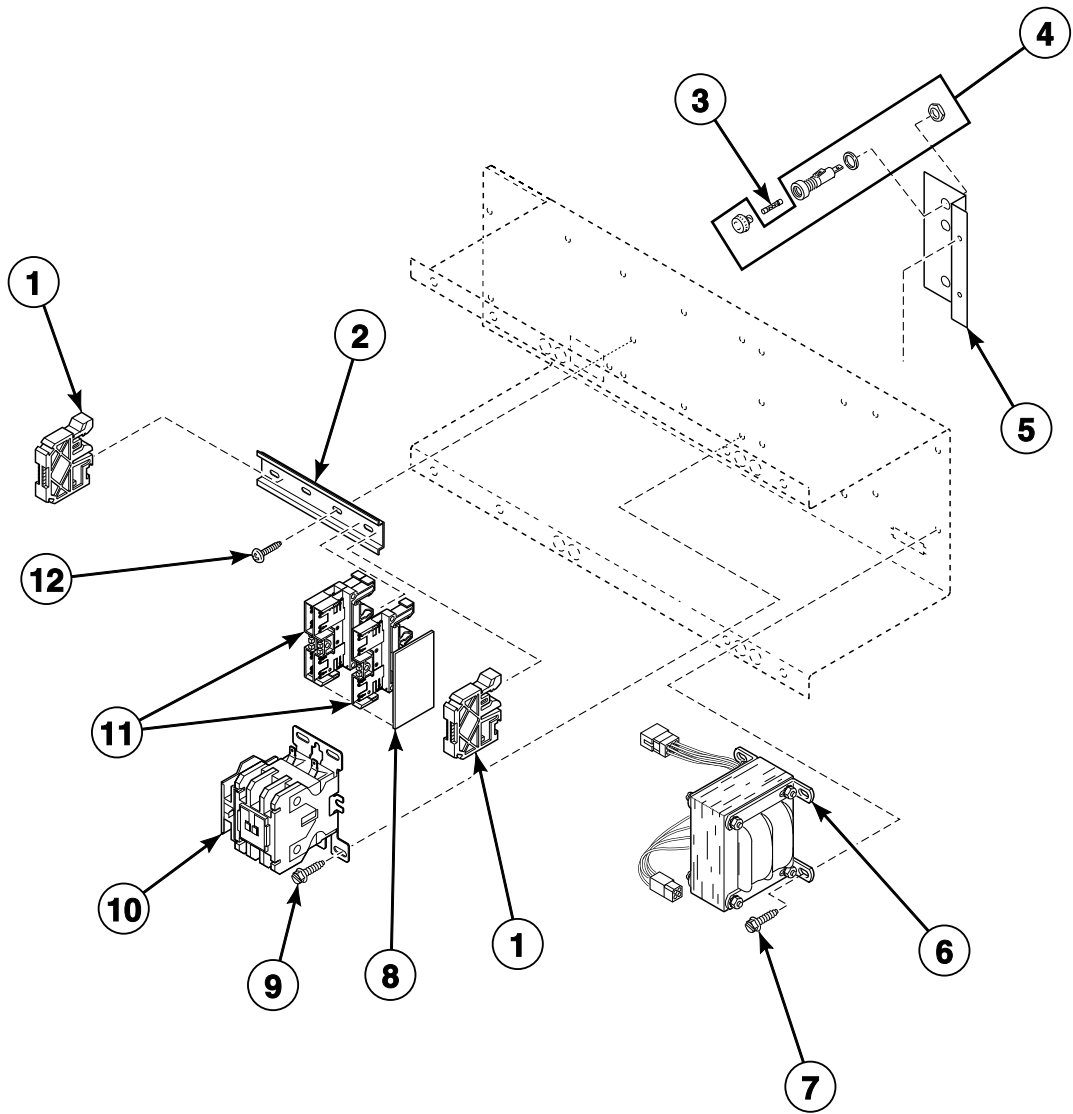
## Control Tray - CE Steam Models



T480P\_70184901

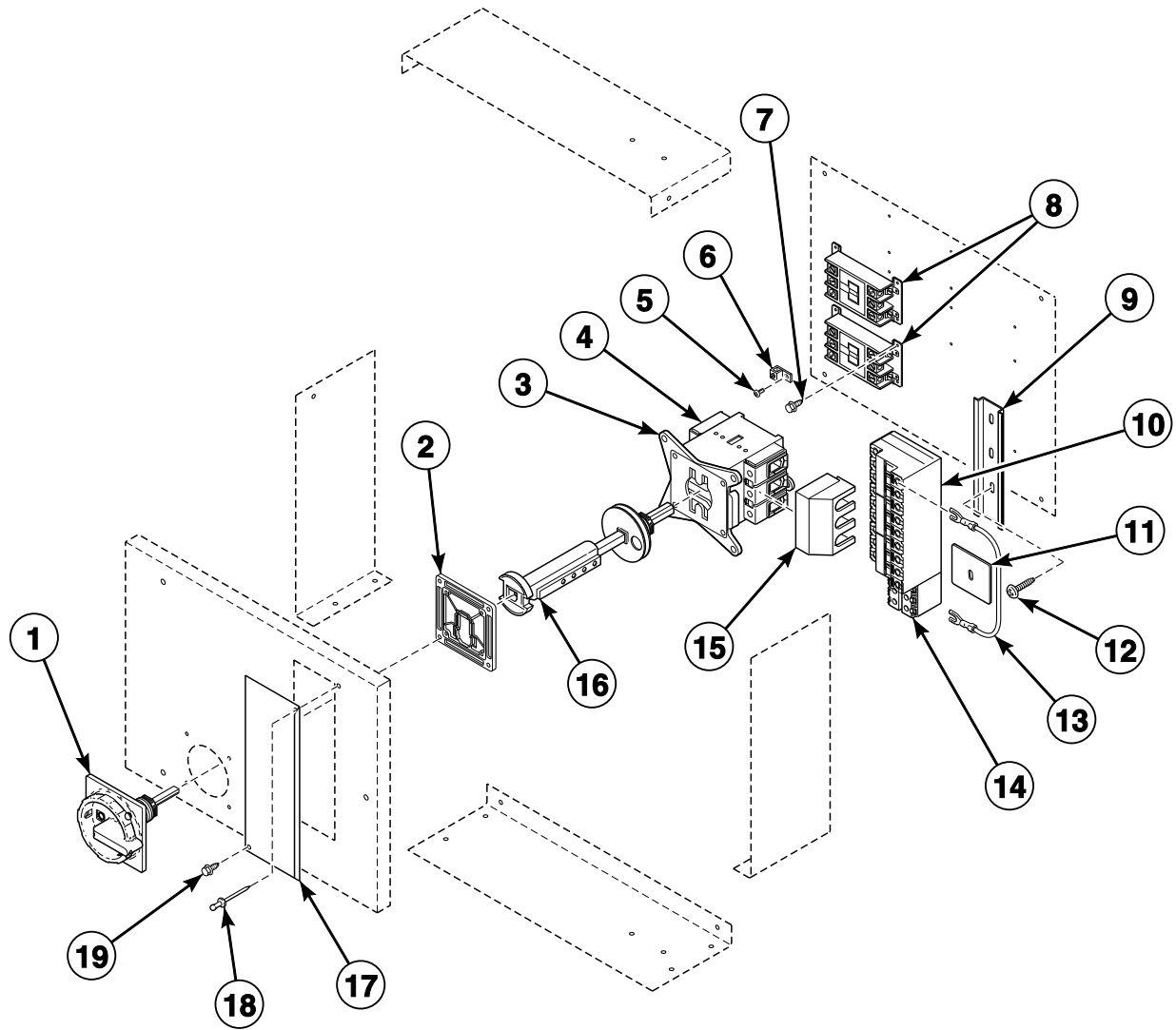
ST2 P38

Control Tray - CE Electric Models



T481P\_70184901

## Accessory Box - CE Electric Models



TMB1858P\_70184901

ST2 P40