

Drying Tumblers

30 Pound Capacity (28 Inches Wide) **ST3**

Refer to Page 3 for Model Numbers

Parts



www.LAVERAP.com

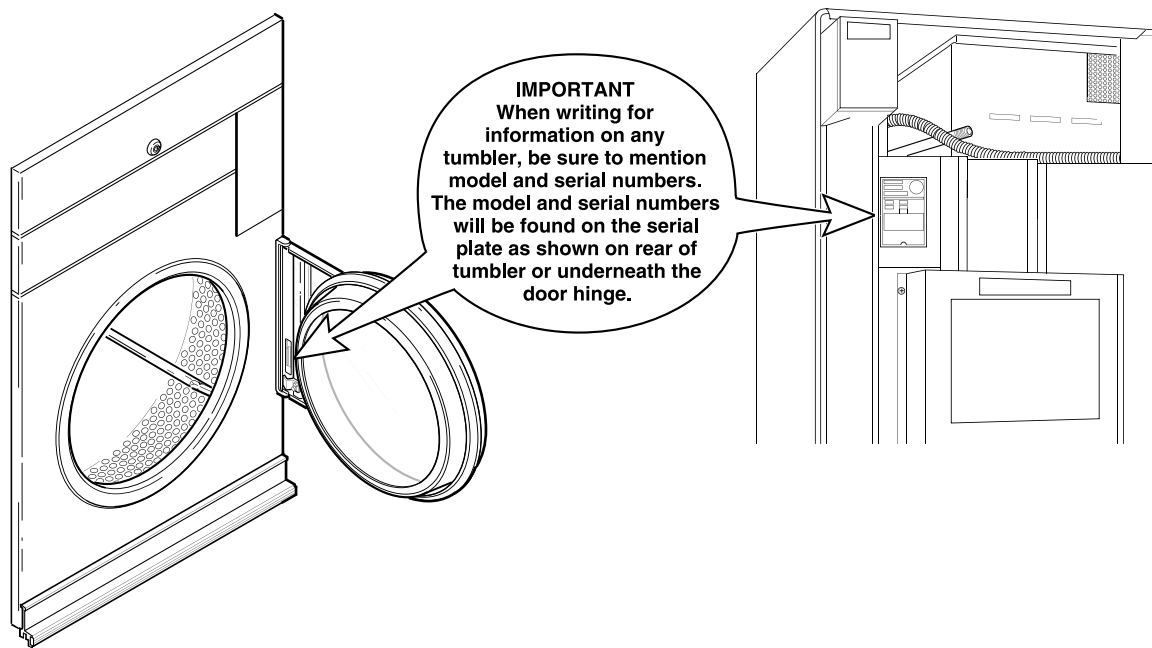
Parts Ordering Information

If literature or replacement parts are required, contact the source from whom the machine was purchased or contact Alliance Laundry Systems at for the name and address of the nearest authorized parts distributor.

For technical assistance, call either of the numbers listed below:

Serial Plate Location

When calling or writing about your product, be sure to mention model and serial numbers. Model and serial numbers are located on serial plate(s) as shown.



T294IE3C_M414037

Model Identification

Information in this manual is applicable to these tumbler models:

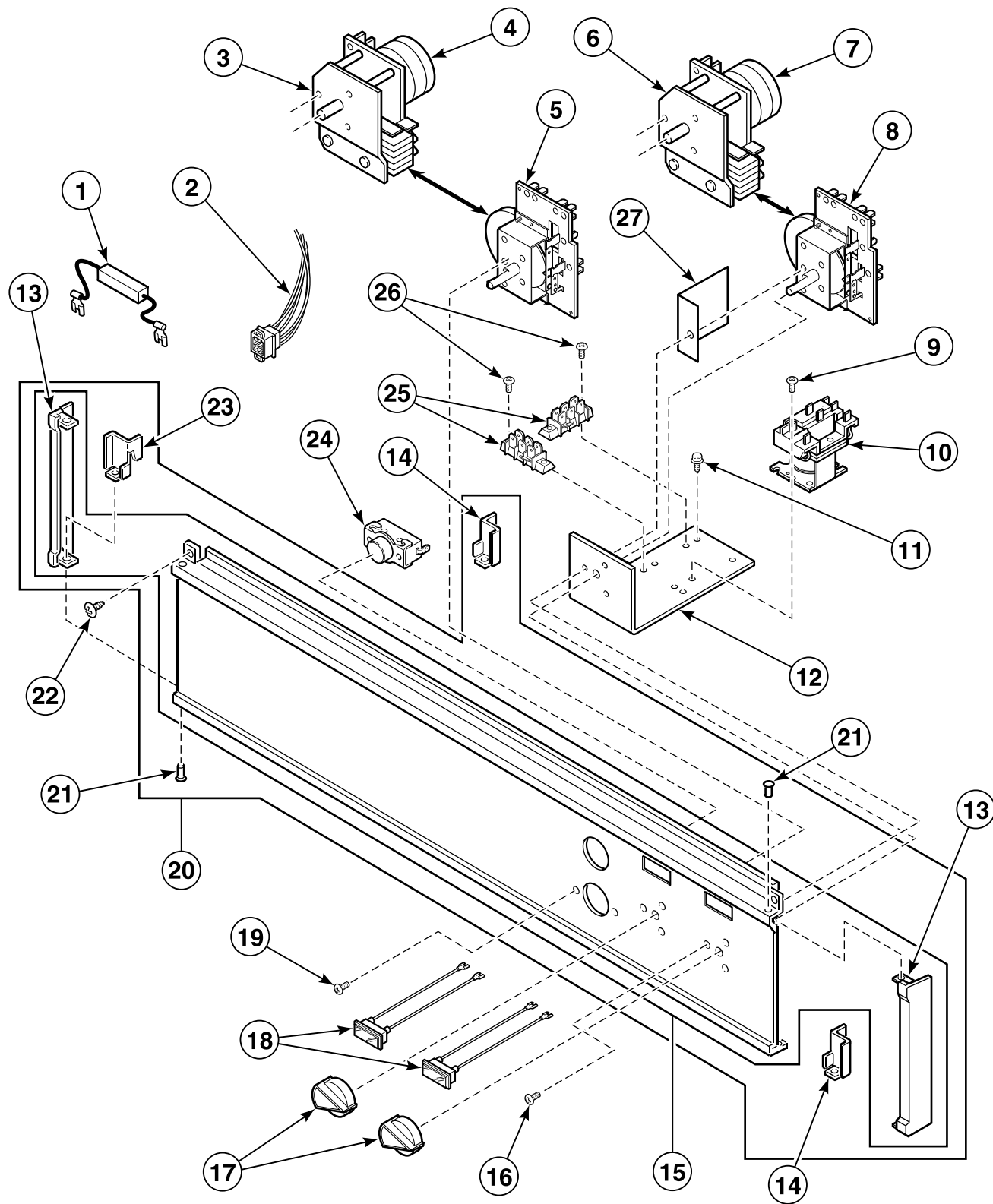
DCB30WE
DCB30XG
DTB30WE
DTB30XG

JCB30WE
JCB30XG
JT30WE
JT30WG

JT30XG
JTB30XG
SCB30WE
SCB30XG

ST30WE
ST30WG
ST30XG
STB30XG

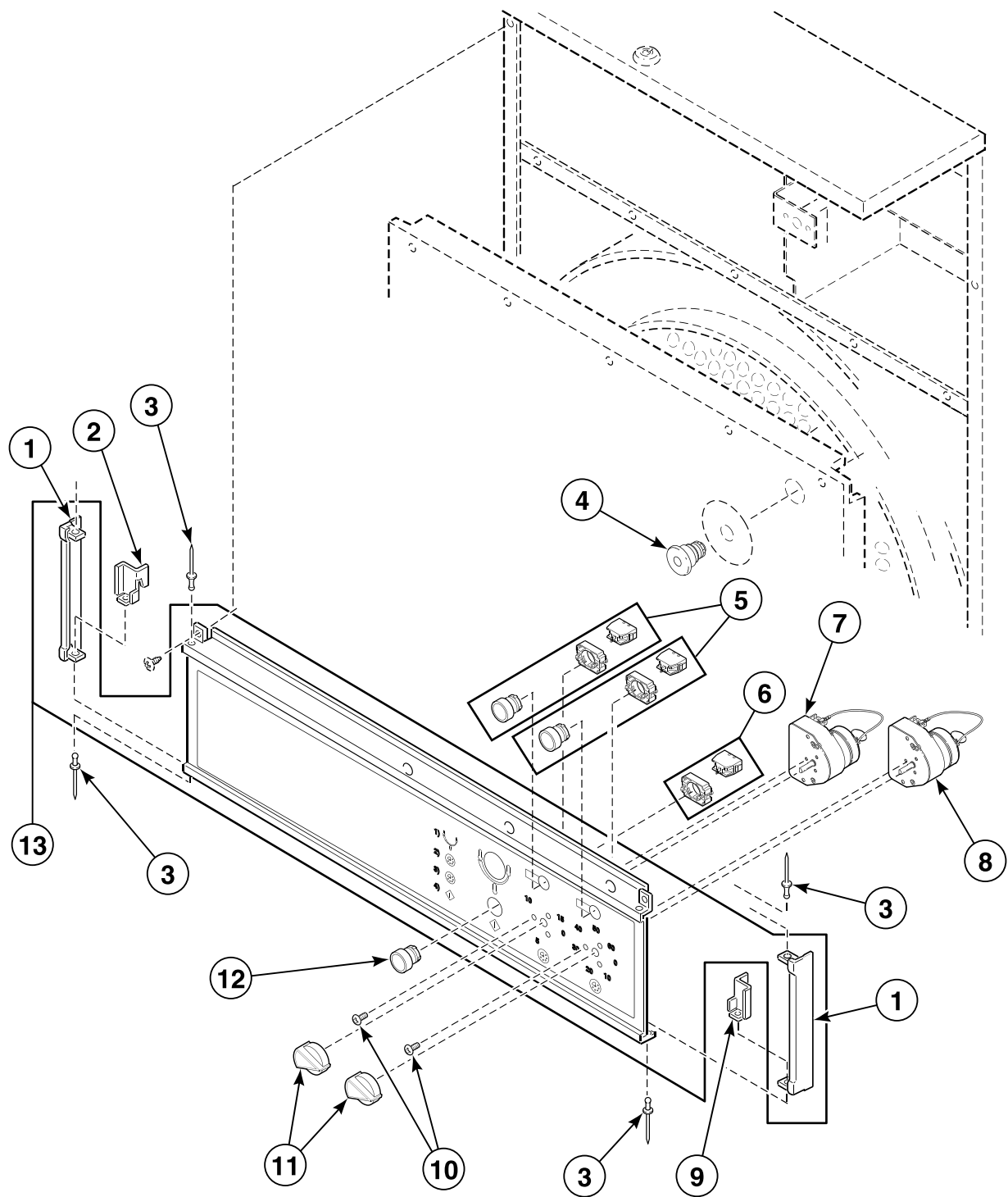
Control Panel Assembly - Non-CE Manual Timer Models



T019P_M414037

ST3 P1

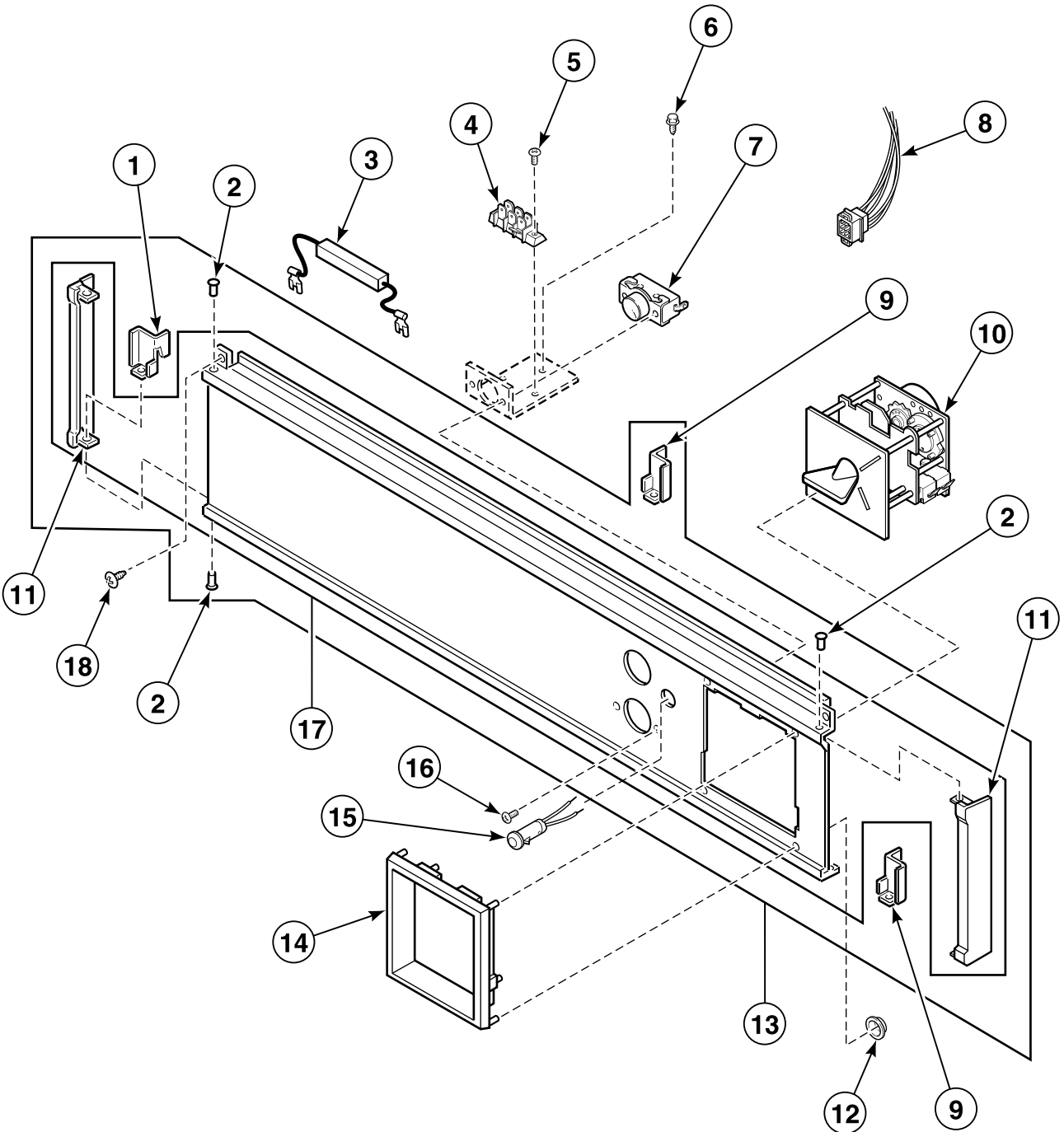
Control Panel Assembly - CE Manual Timer Models



T416PZ3B_M414037

ST3 P2

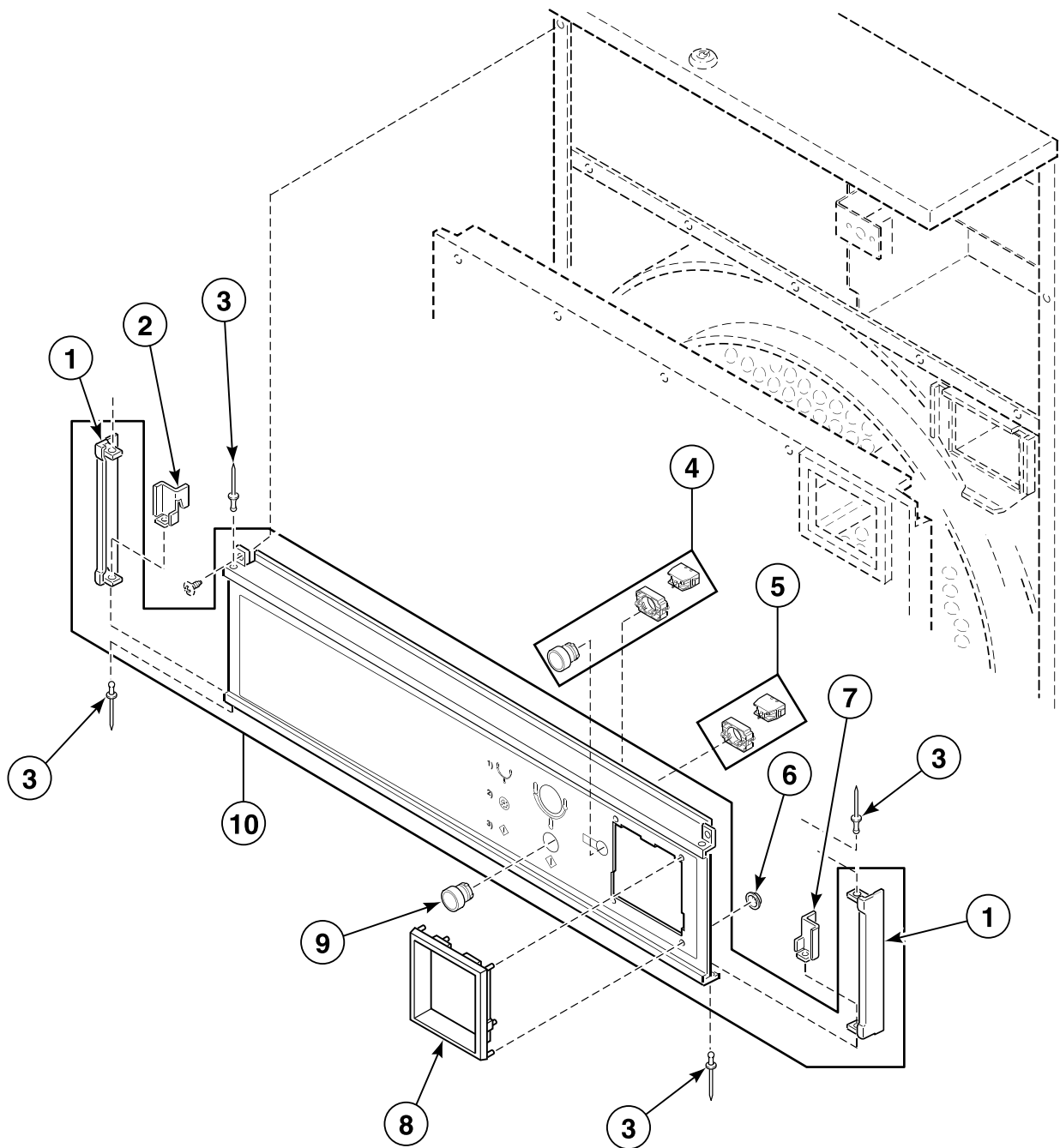
Control Panel Assembly - Non-CE Coin Drop Models



T020P_M414037

ST3 P3

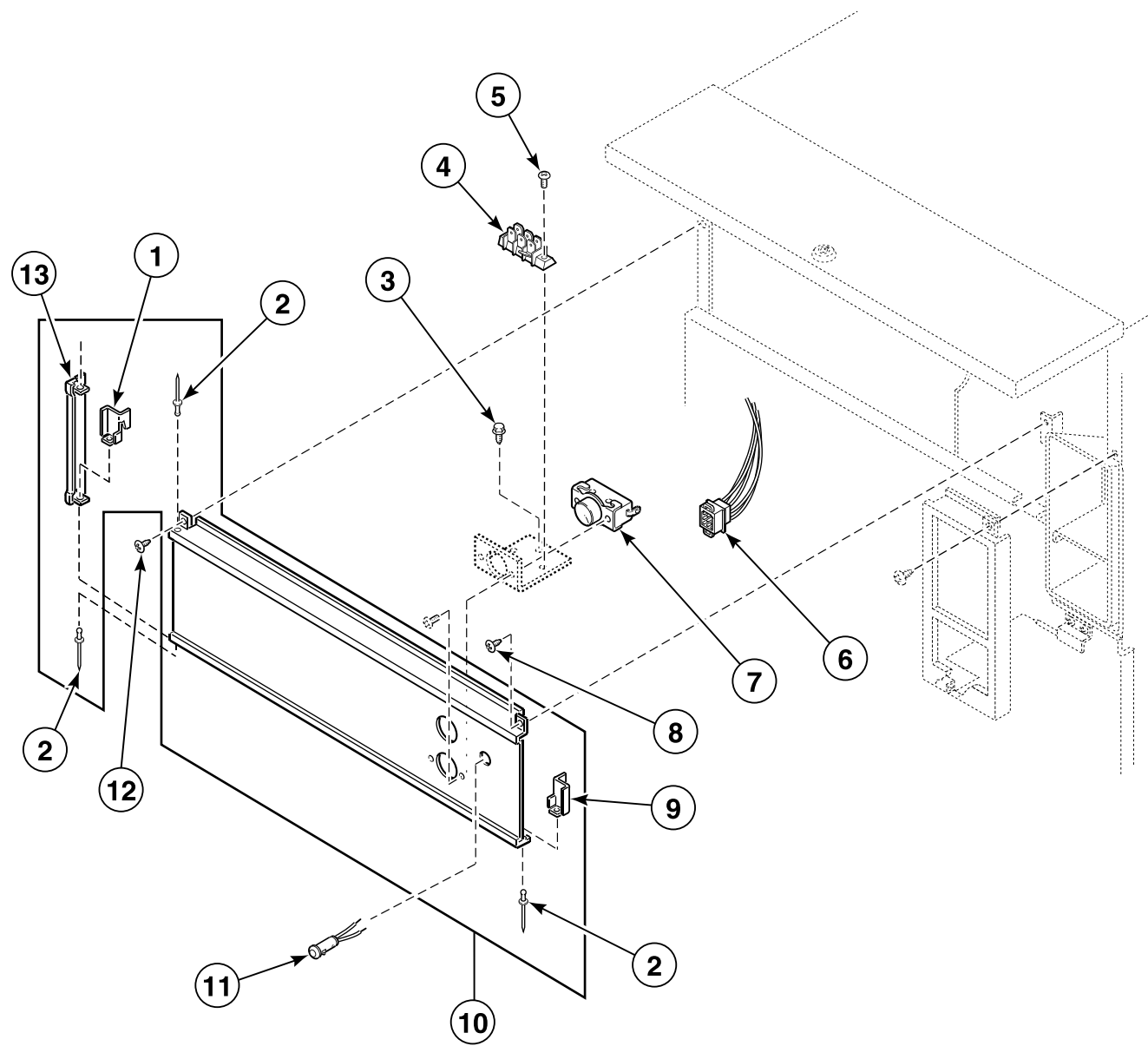
Control Panel Assembly - CE Coin Drop Models



T417PZ3B_M414037

ST3 P4

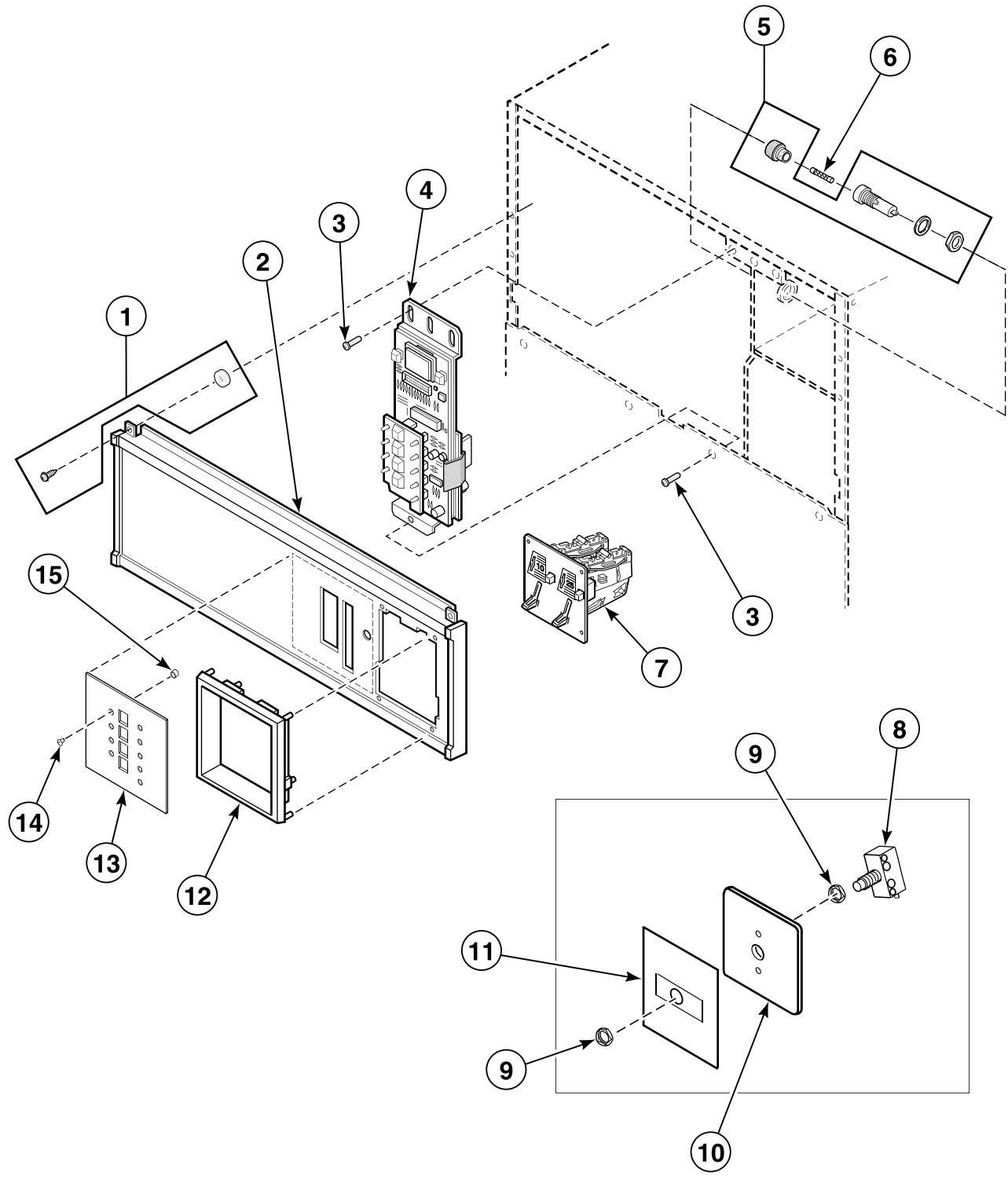
Control Panel Assembly - Coin Slide Models



T344P_M414037

ST3 P5

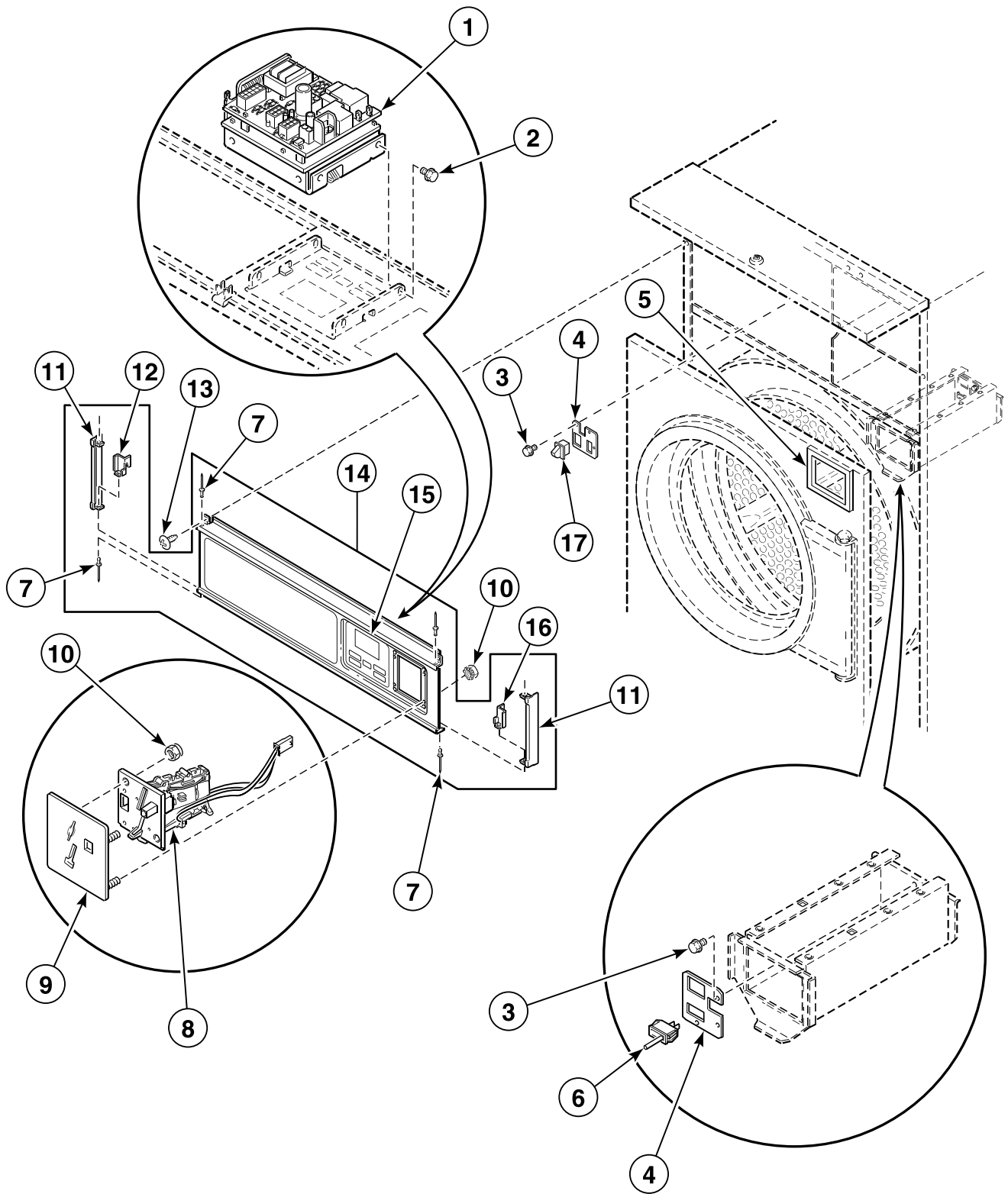
Control Panel Assembly - Pushbutton Electronic Control Coin (MC) Models



T061P_M414037

ST3 P6

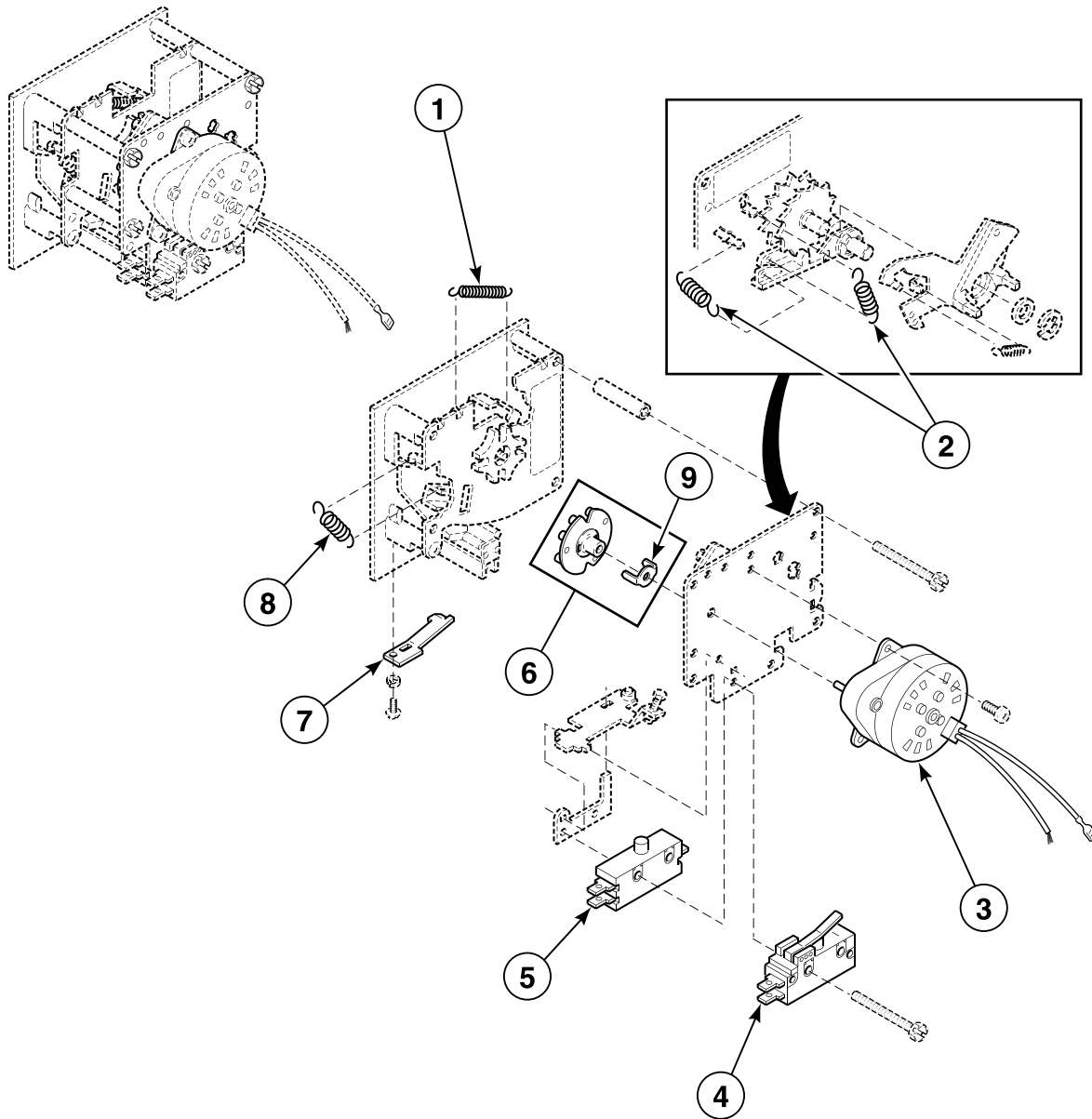
Control Panel Assembly - Touch Pad Electronic Control Coin (EC) Models



T259B_M414037

ST3 P7

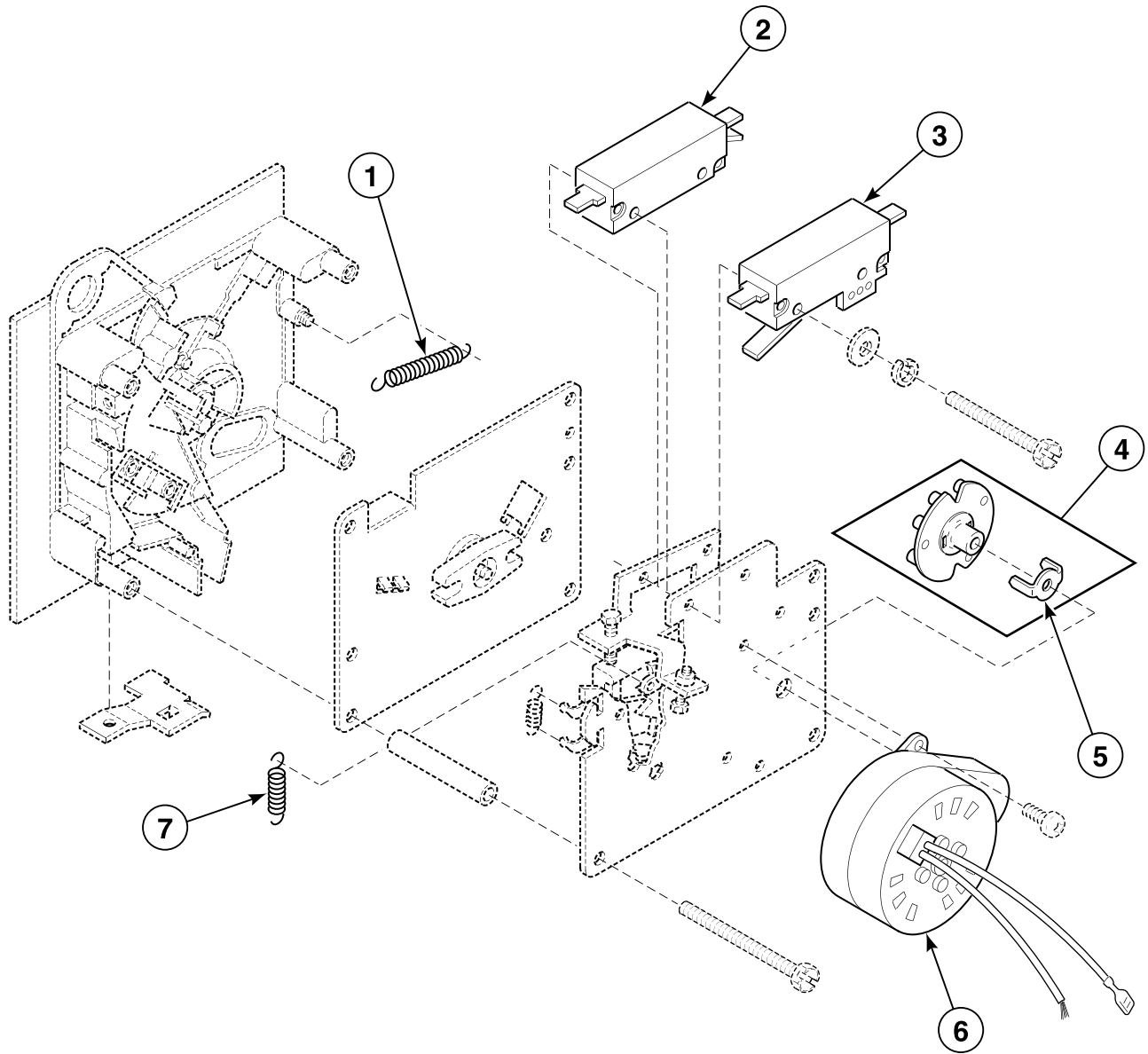
Single Coin Meter Components



T022P_M414037

ST3 P8

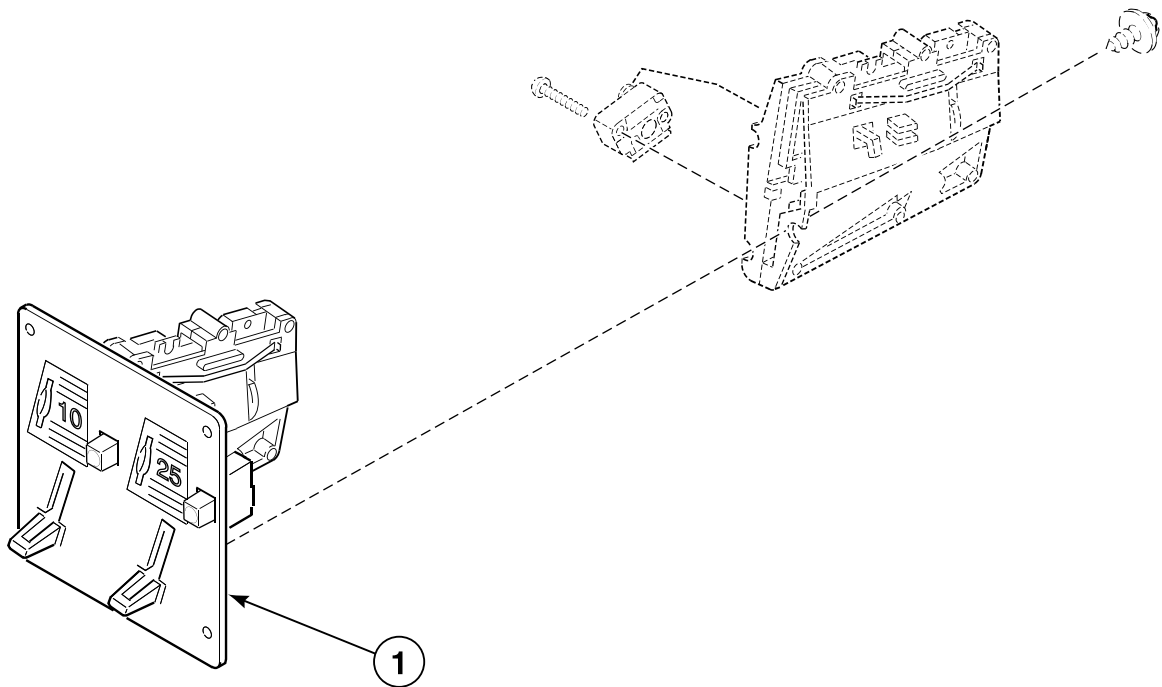
Dual Coin Meter



T023PZ3B_M414037

ST3 P9

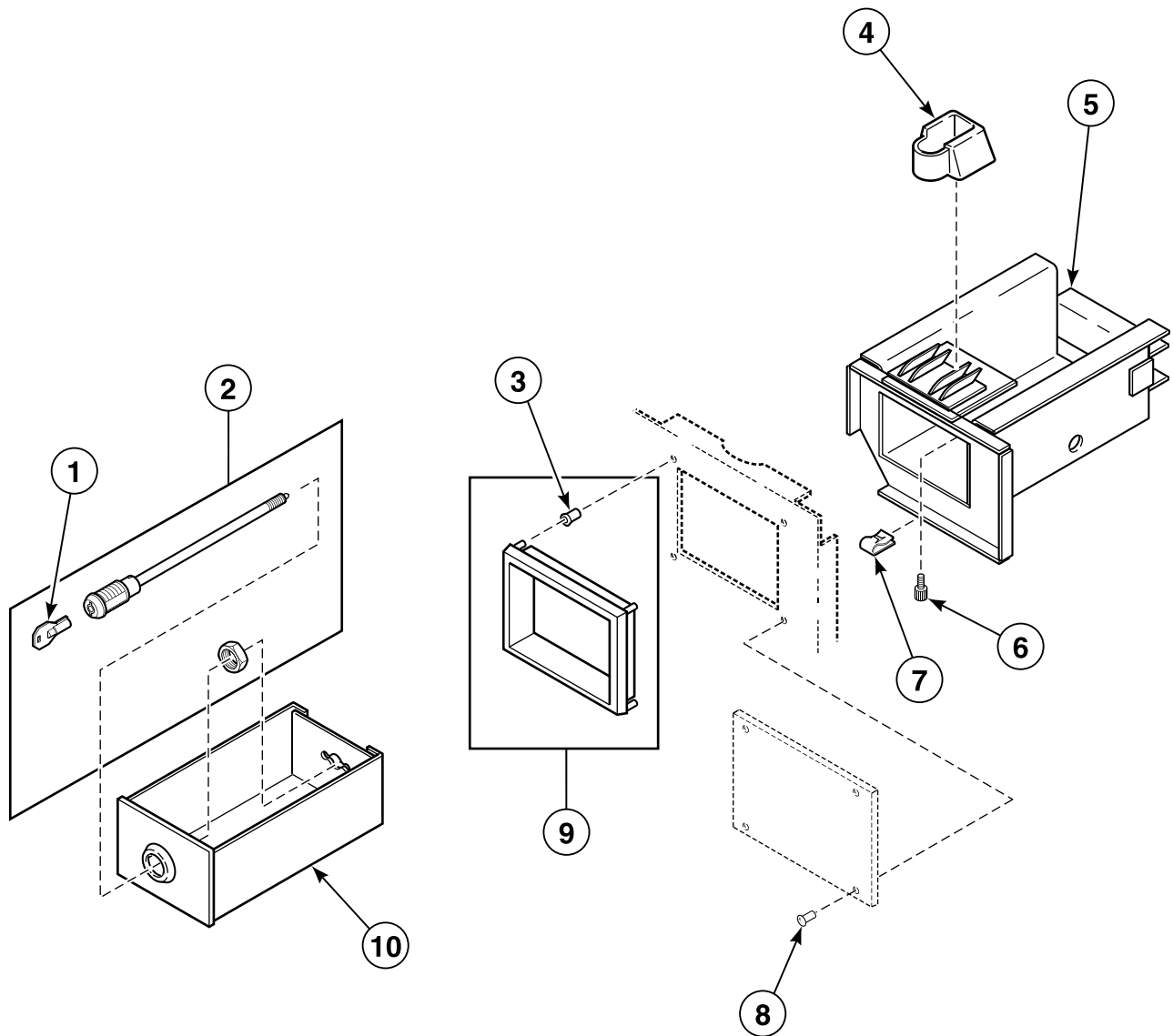
Coin Drop for Pushbutton Electronic Control Coin (MC) Models



T342P_M414037

ST3 P10

Coin Vault and Vault Guide Assembly

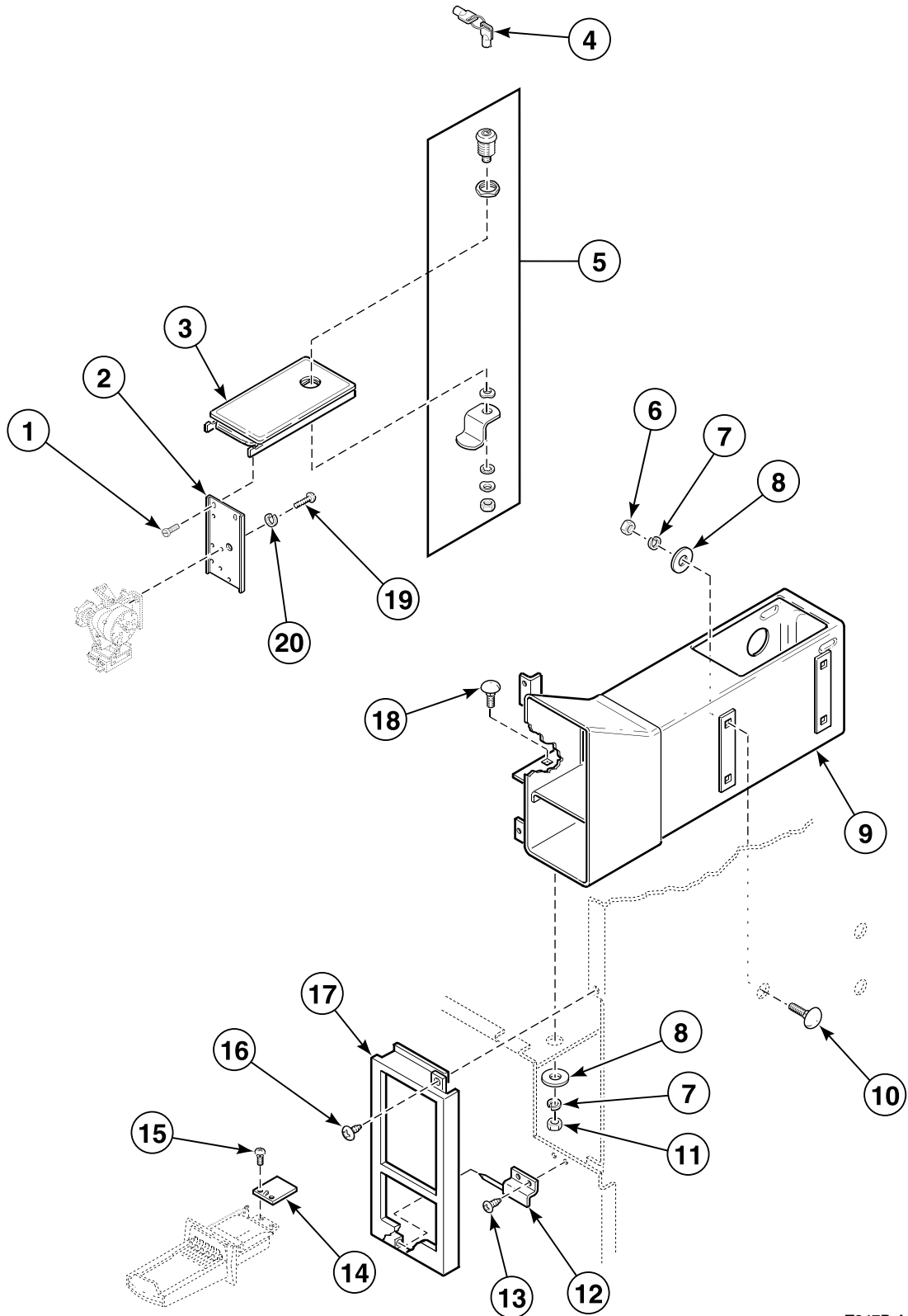


T346P_M414037

ST3 P11

Meter Case

Coin Slide Models

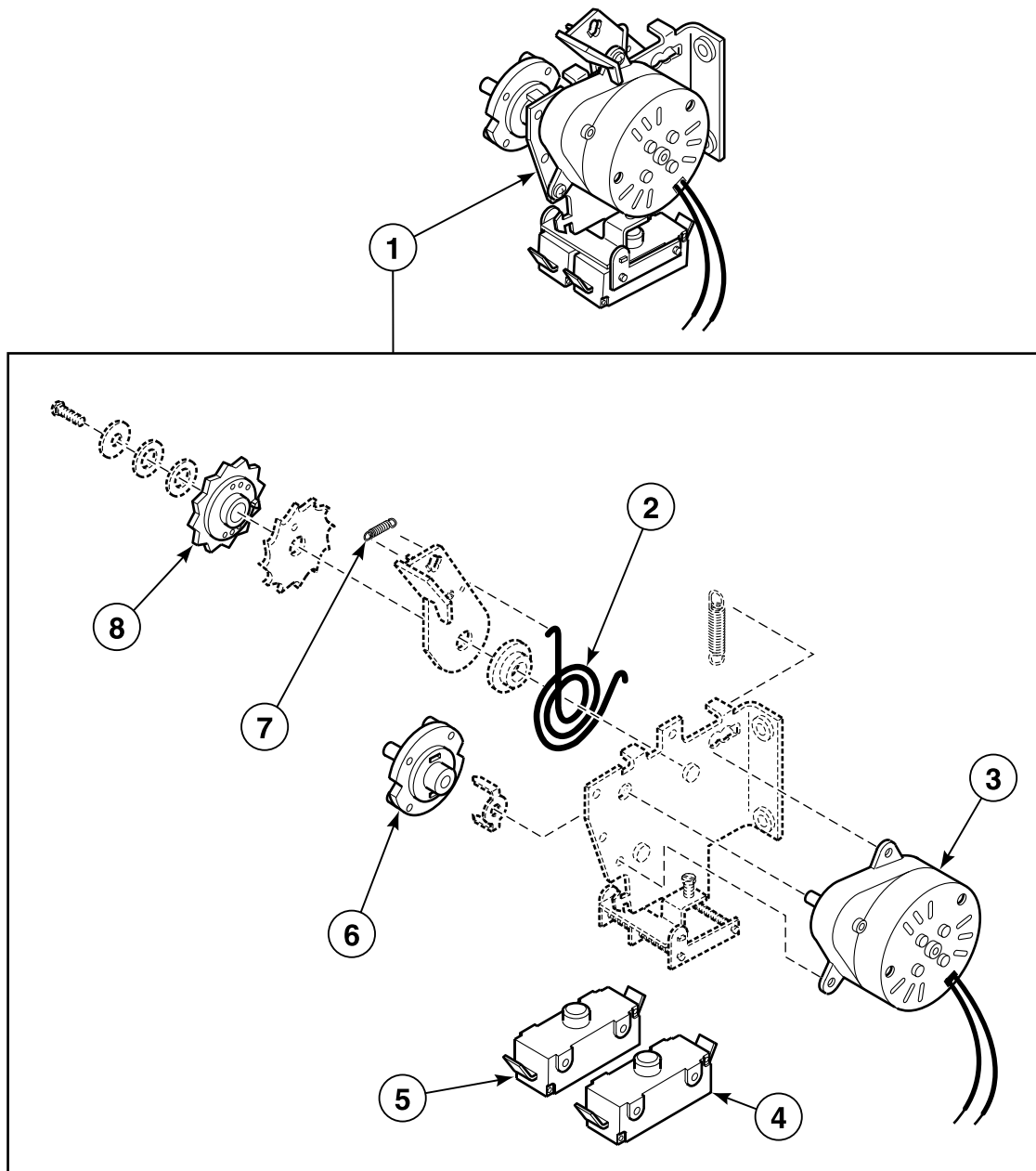


T347P_M414037

ST3 P12

Accumulator

Coin Slide Models

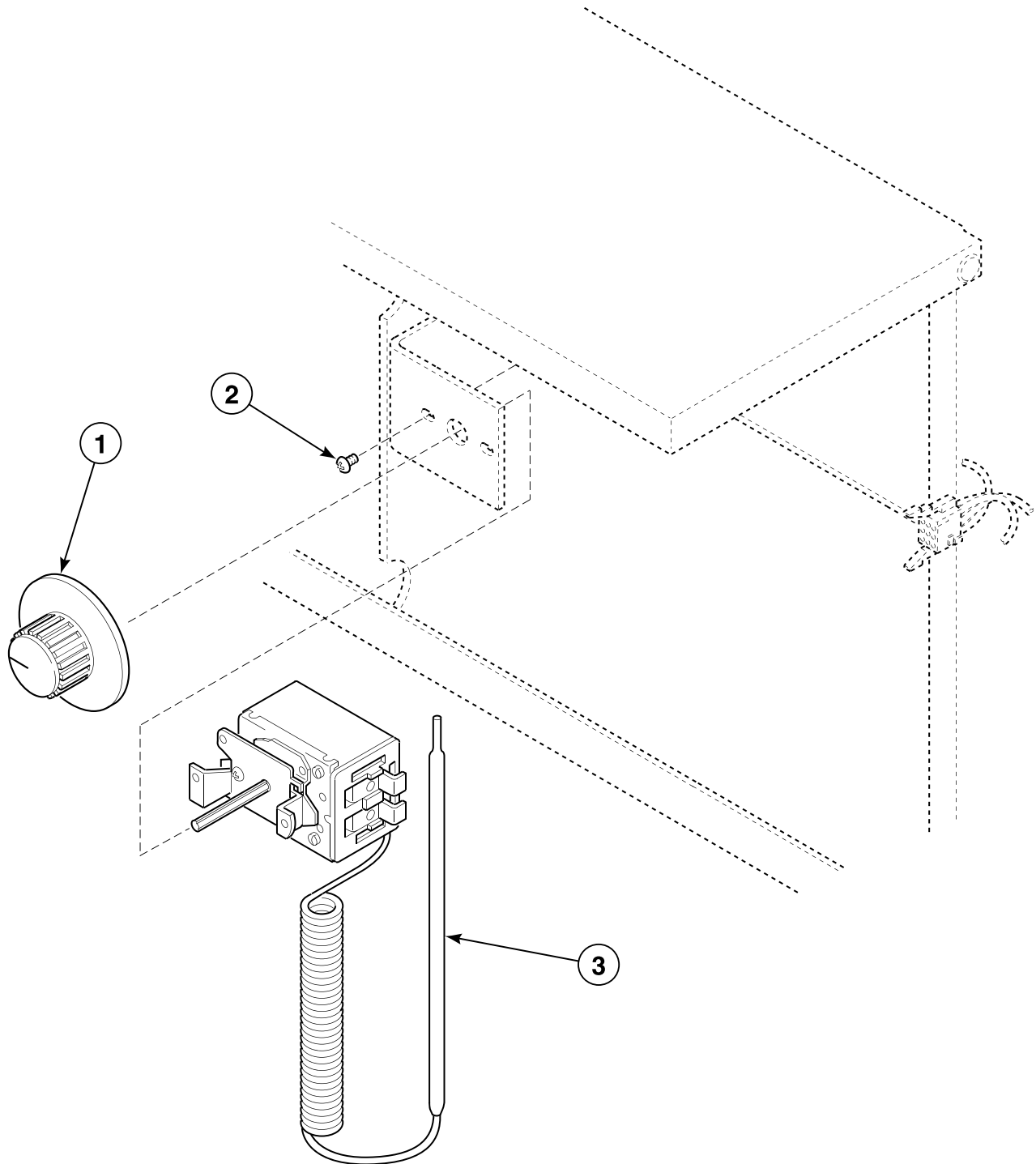


T299PZ3A_M414037

ST3 P13

Thermostat and Harness Assembly

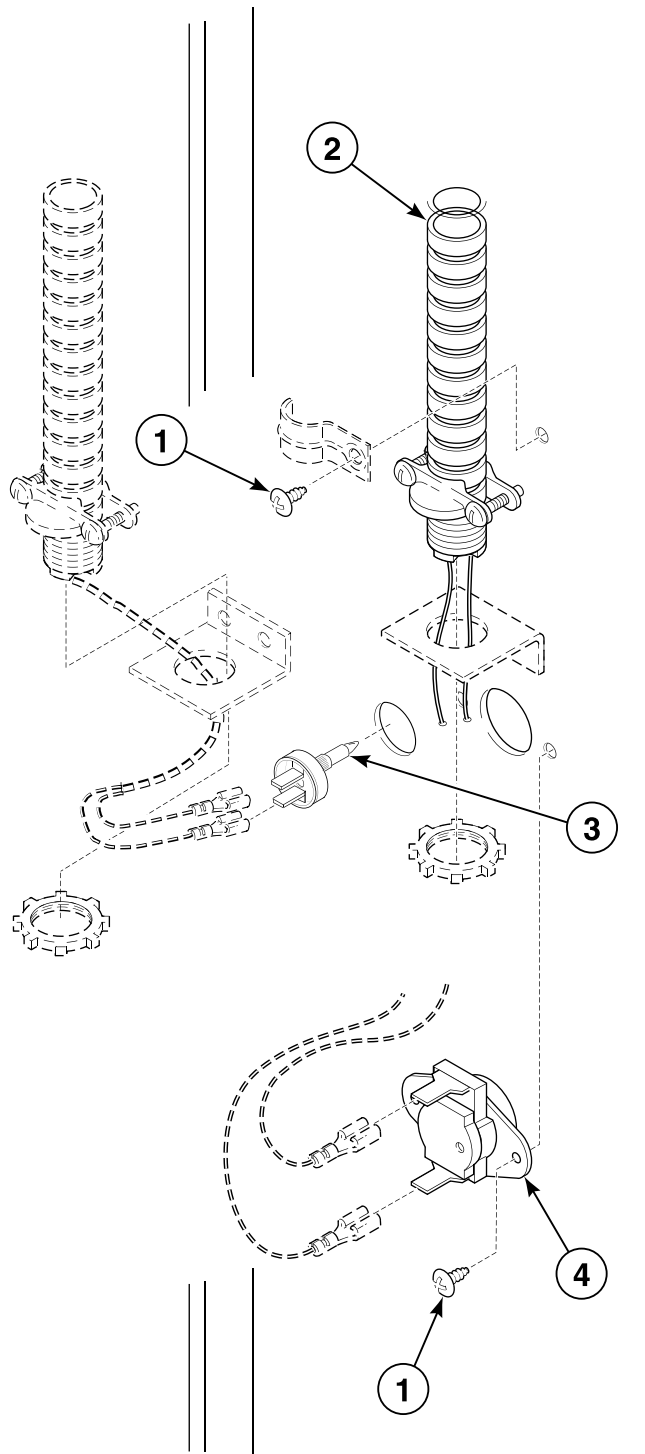
Manual Timer and Coin Drop Models



T054P_M414037

ST3 P14

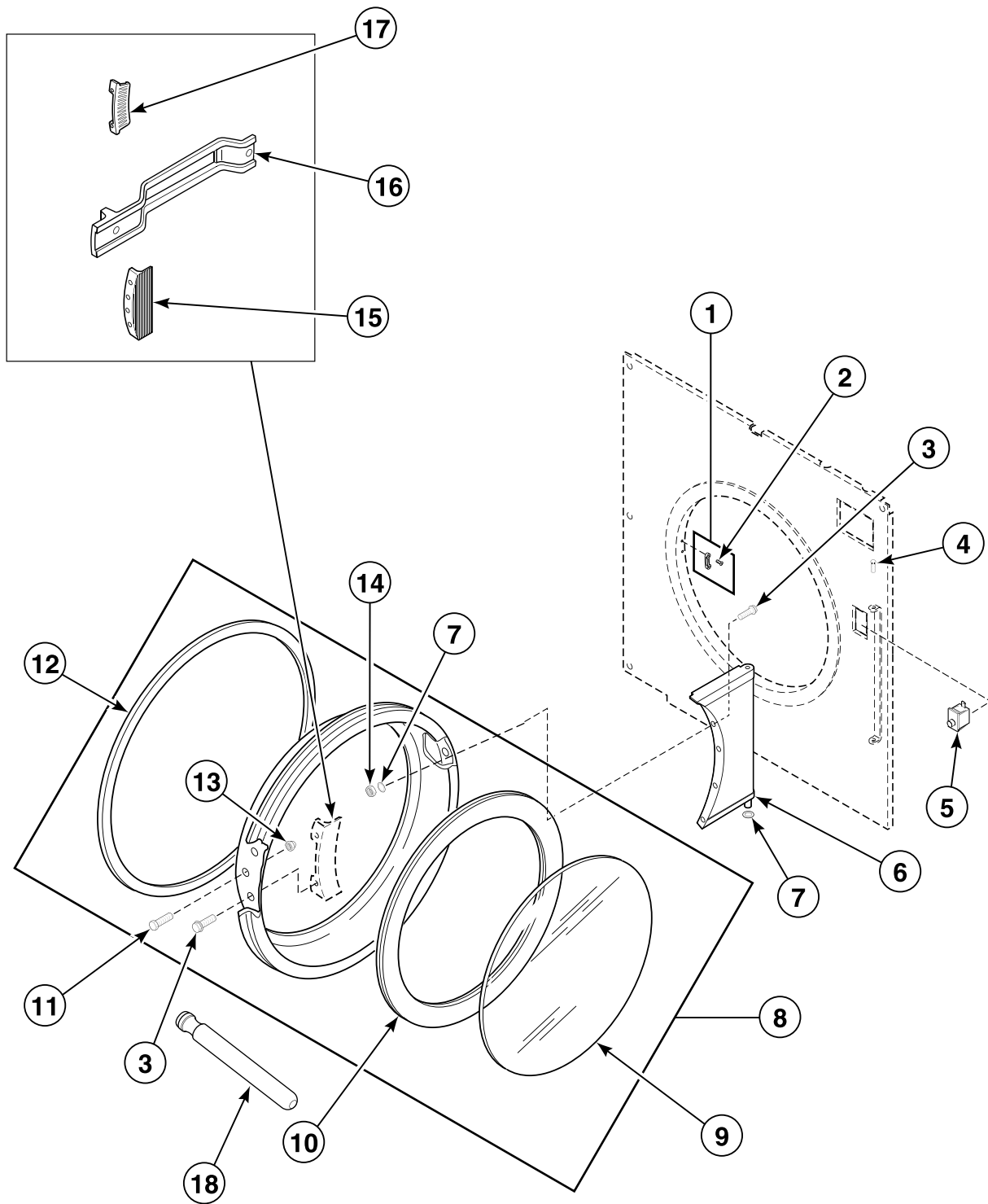
Cabinet Thermostat



T345P_M414037

ST3 P15

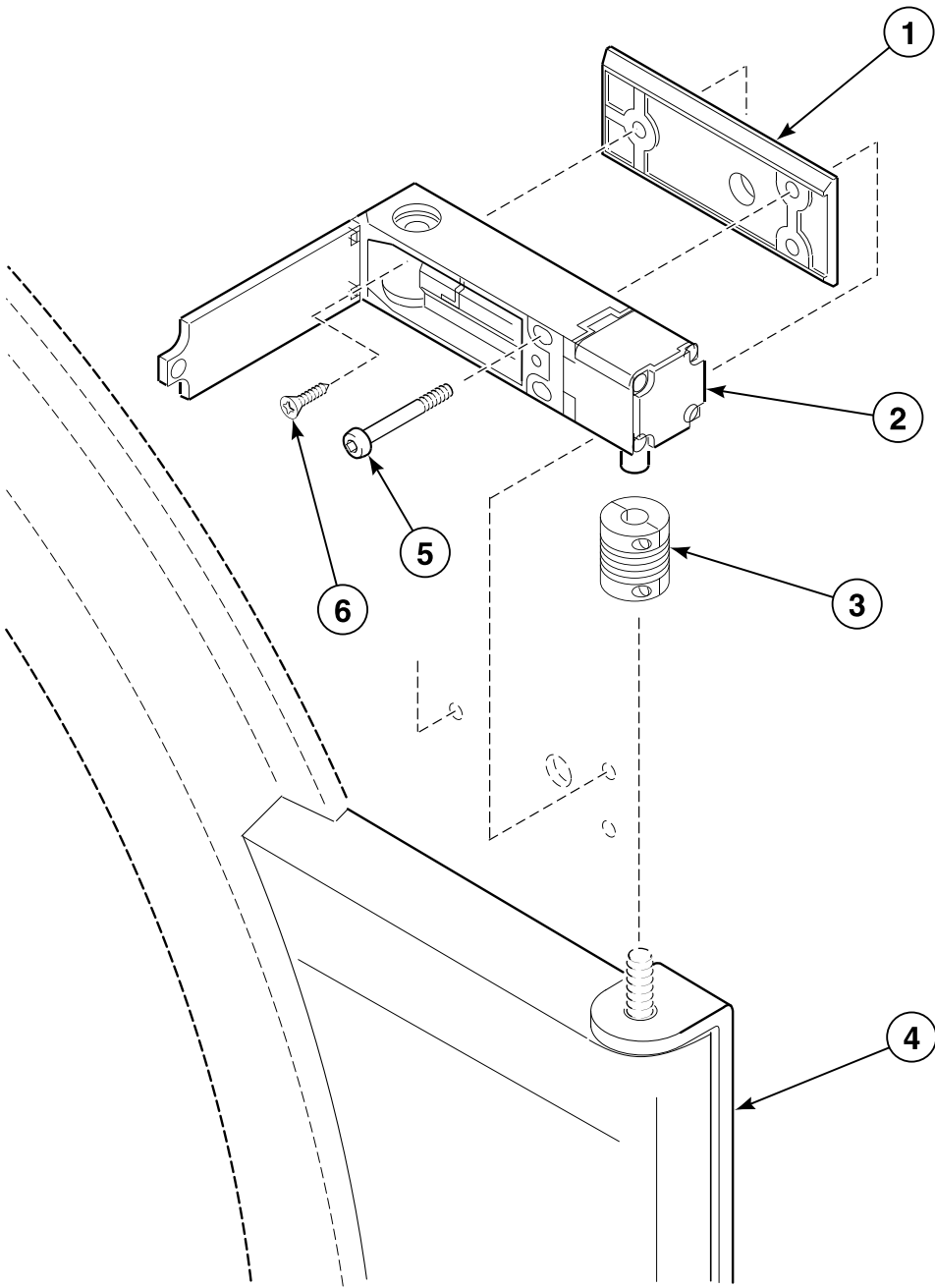
Loading Door Assembly



TMB2916P_M414037

ST3 P16

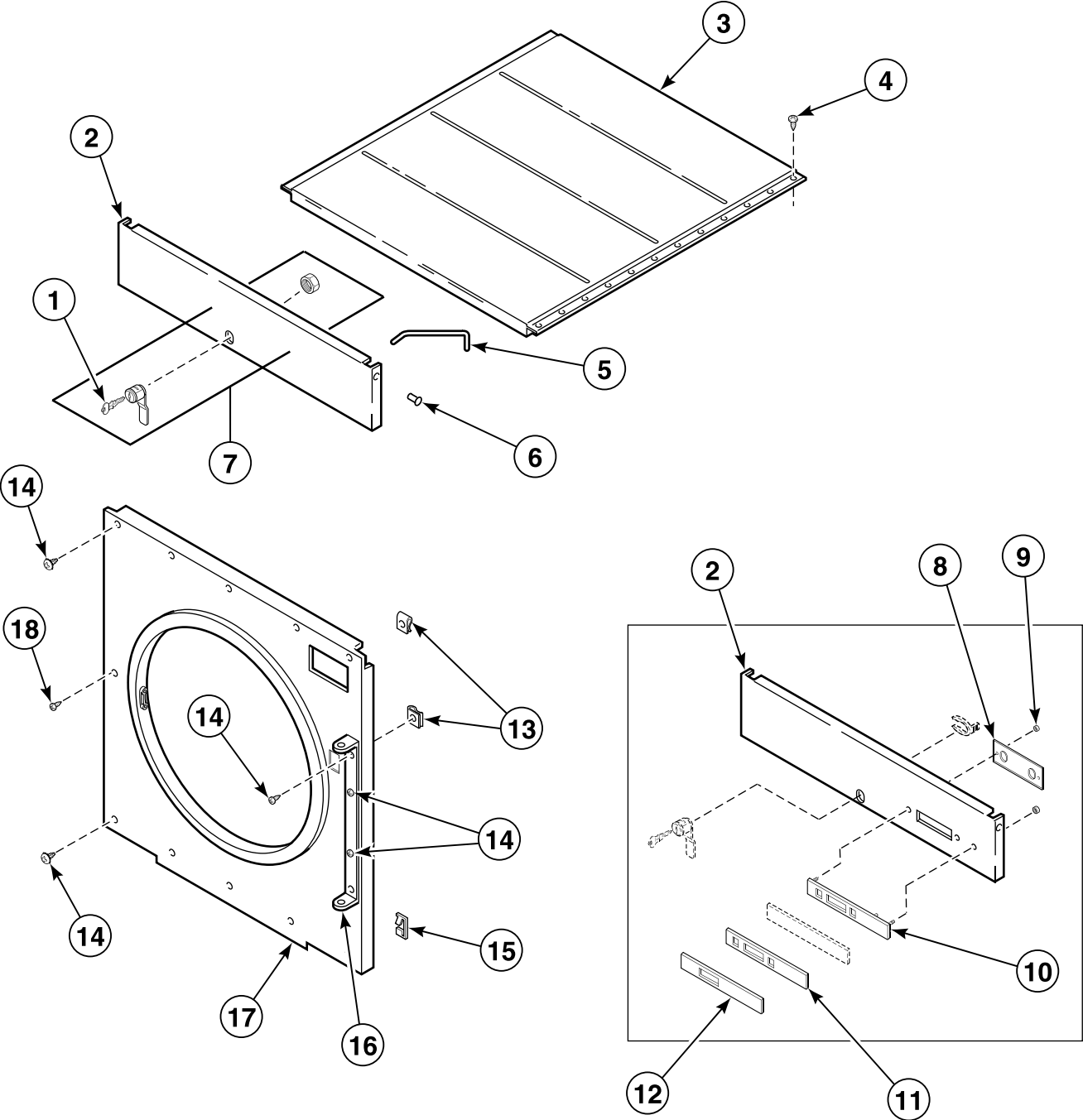
Door Switch - CE Models



T418P_M414037

ST3 P17

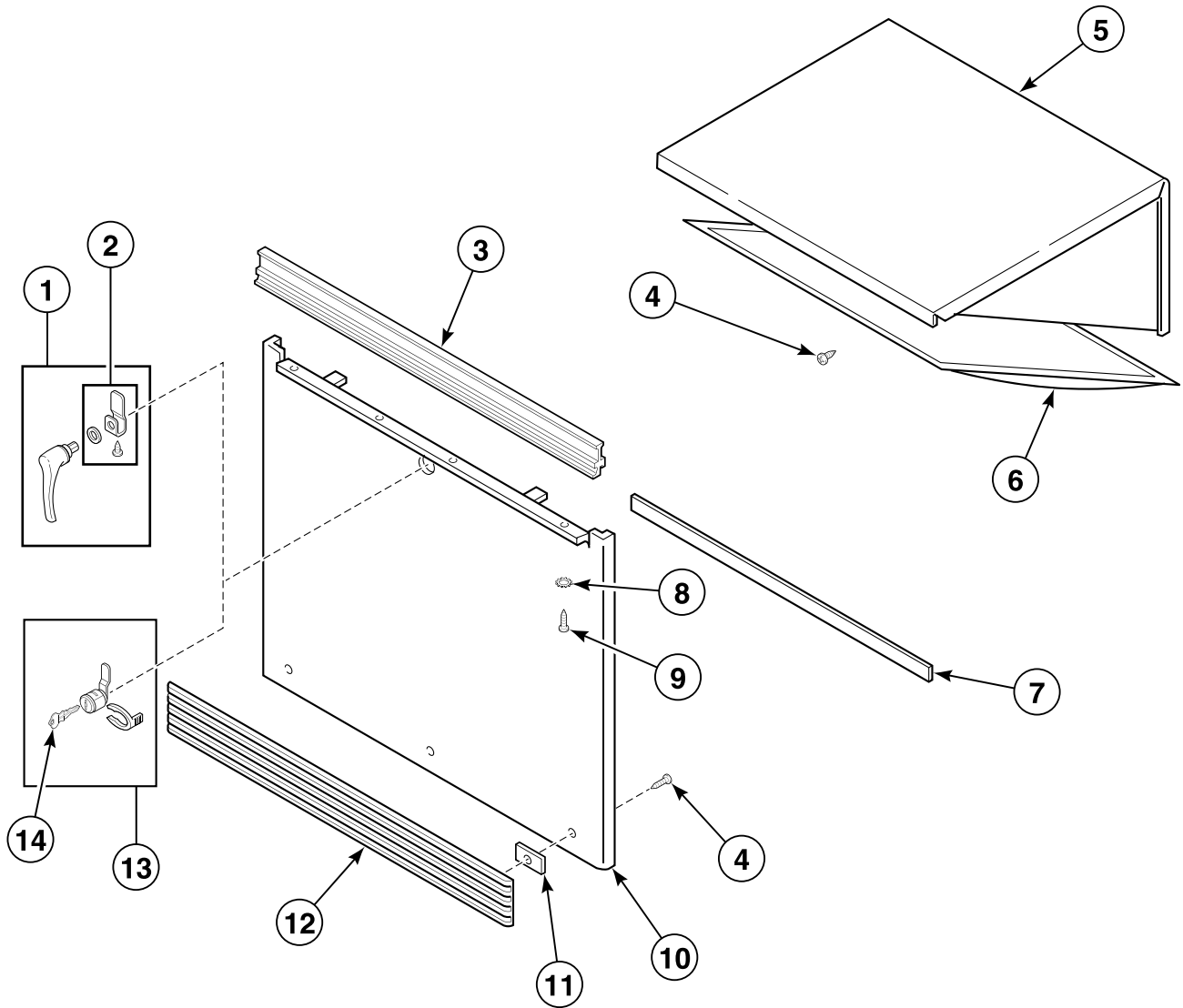
Top and Front Panels



T349P_M414037

ST3 P18

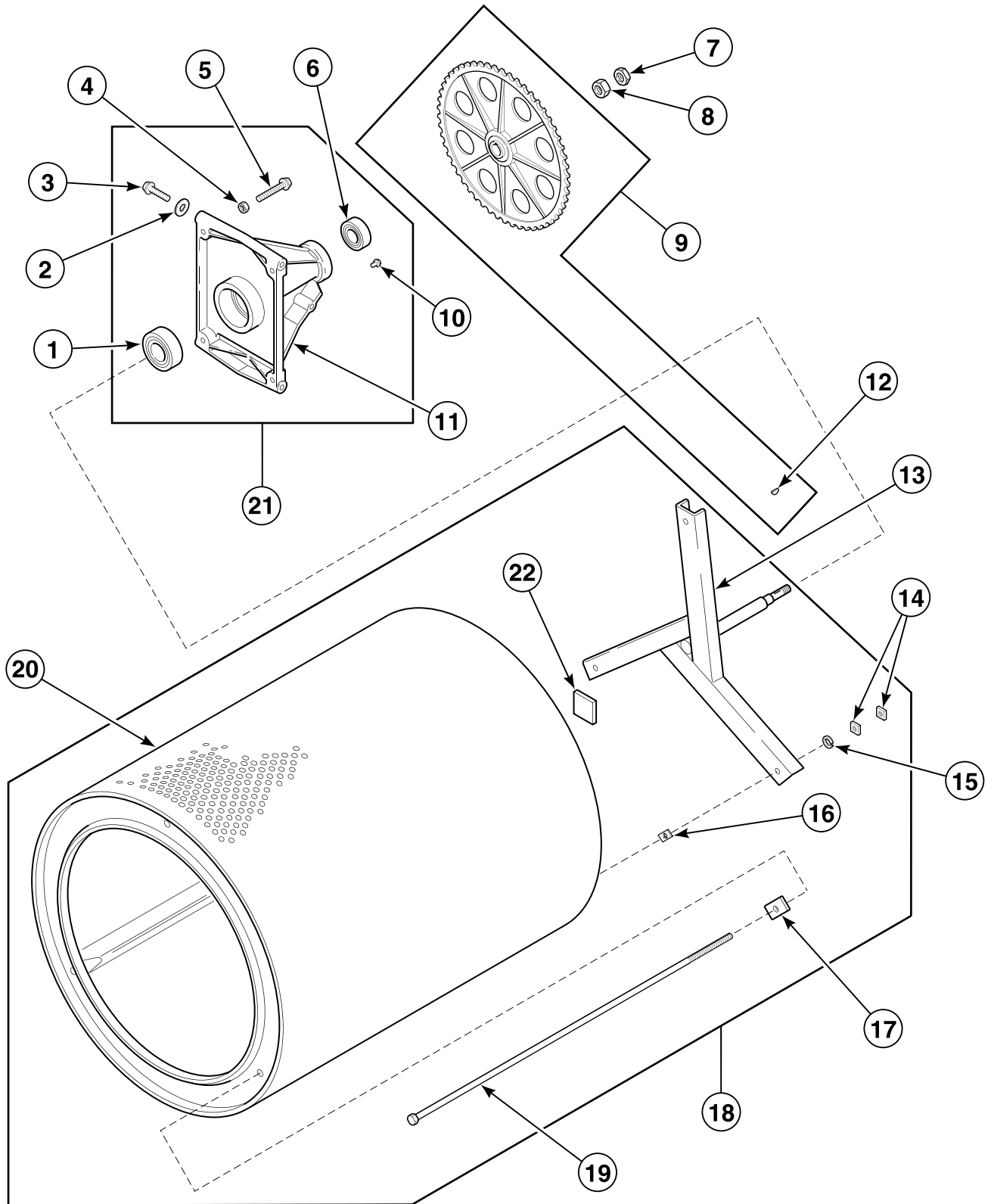
Lint Panel and Compartment



T363PZ3B_M414037

ST3 P19

Cylinder and Trunnion Assemblies

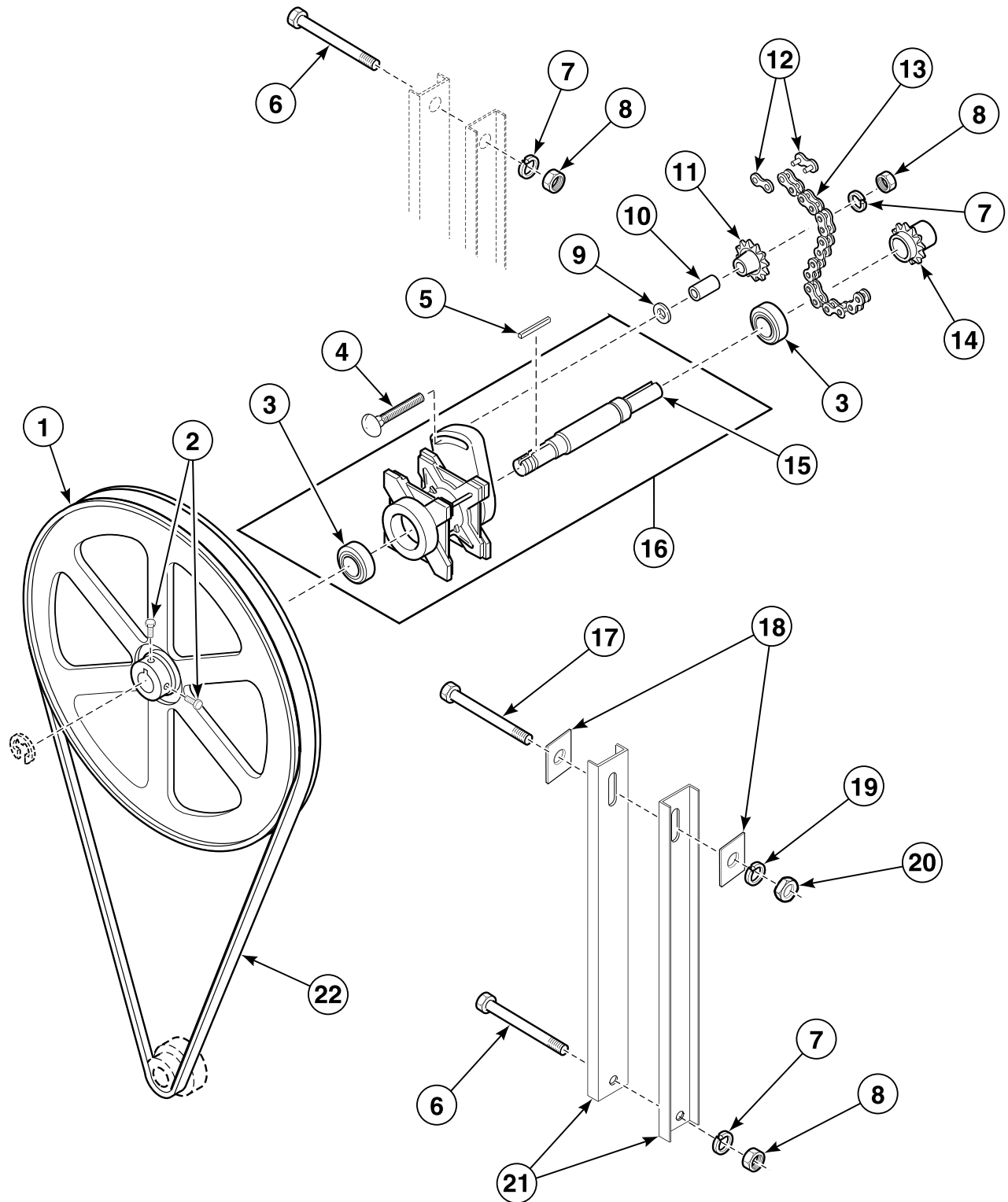


TMB2900P_M414037

ST3 P20

Chain Drive Components (Drawing 1 of 2)

Gas Models Through Serial No. XTKE01699RM

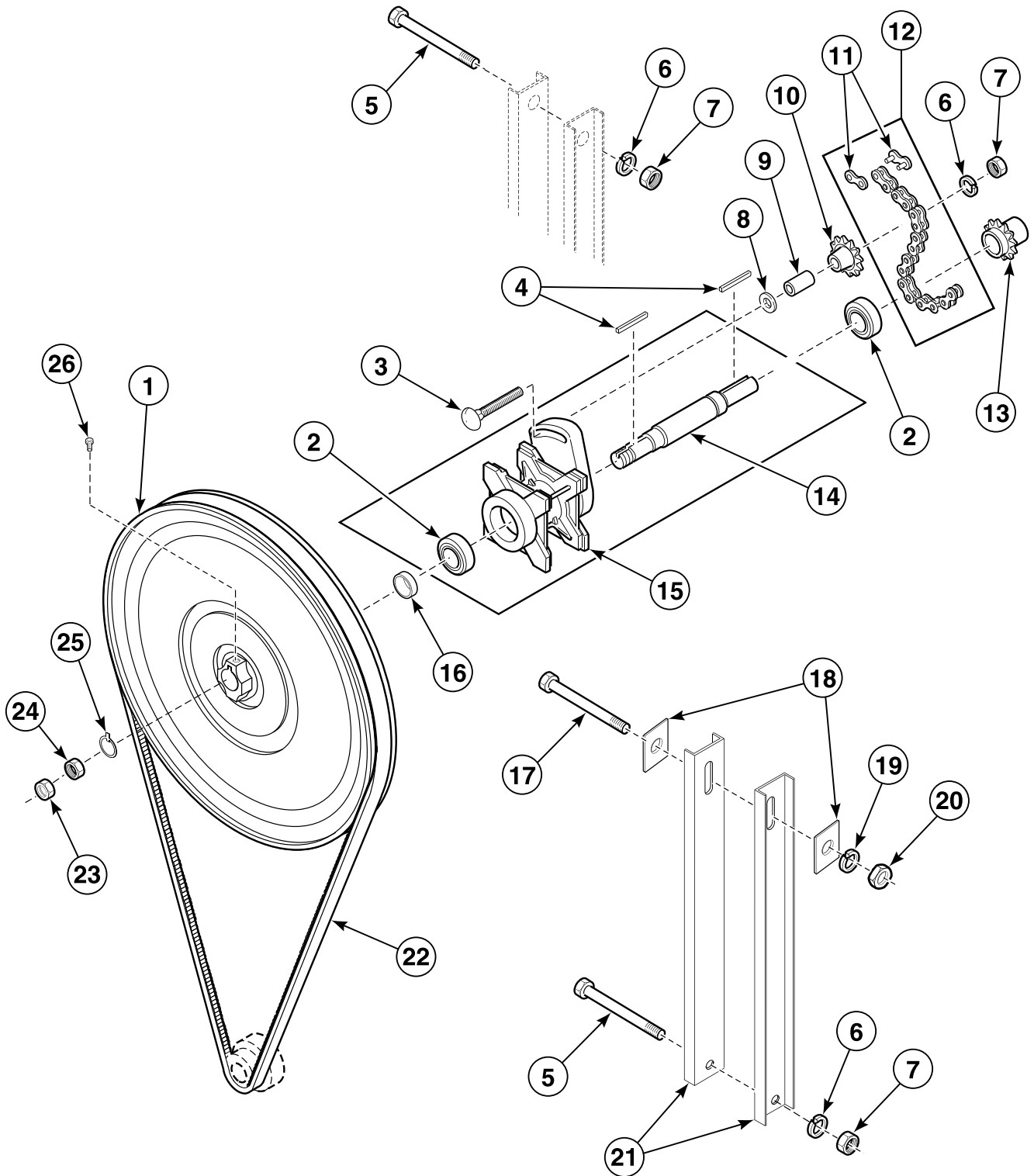


T352PZ3B_M414037

ST3 P21

Chain Drive Components (Drawing 2 of 2)

Gas and Electric Models Starting Serial No. XTKE017000RM Through Serial No. XTEK684494XN

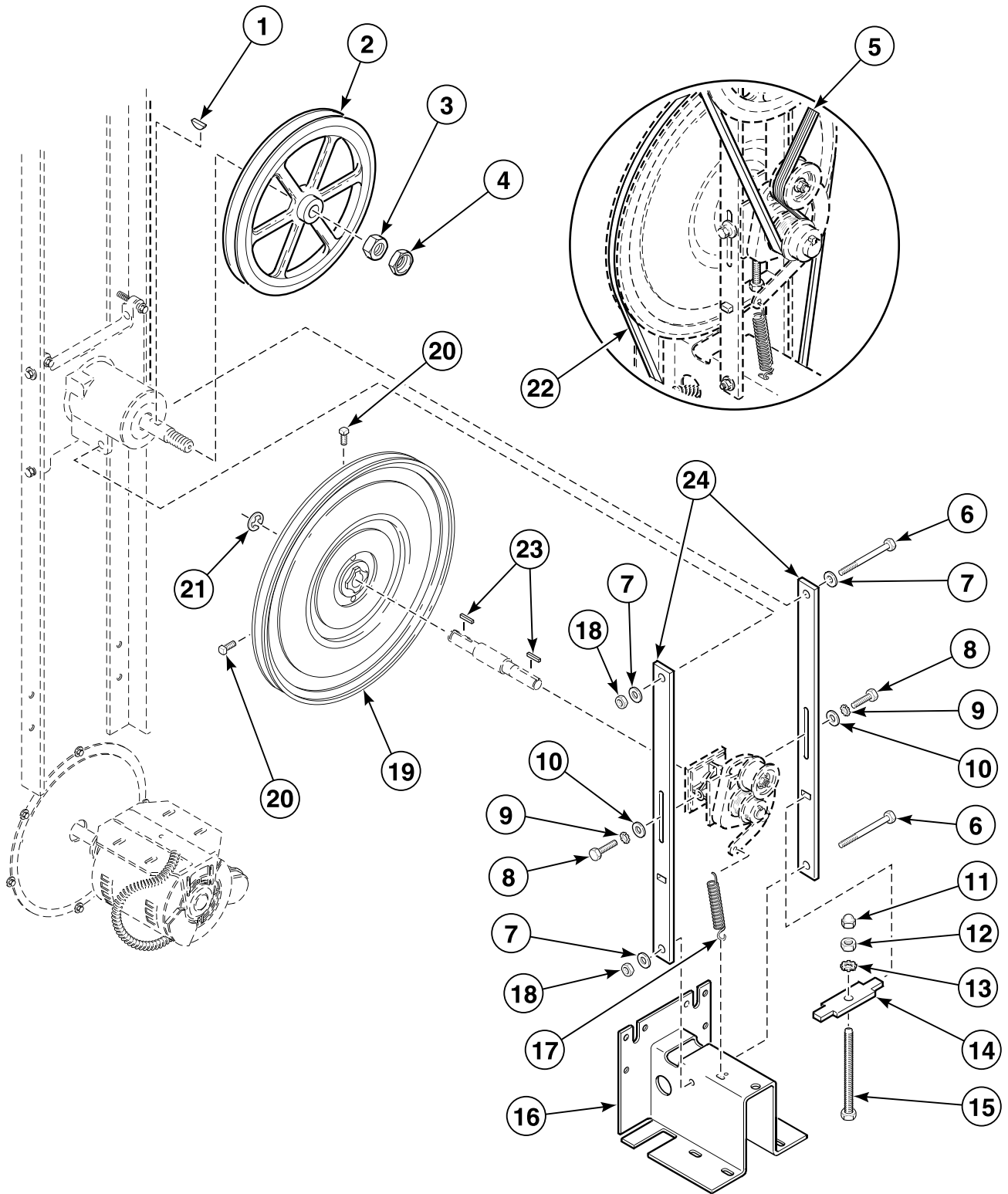


T353P_M414037

ST3 P22

Belt Drive Components

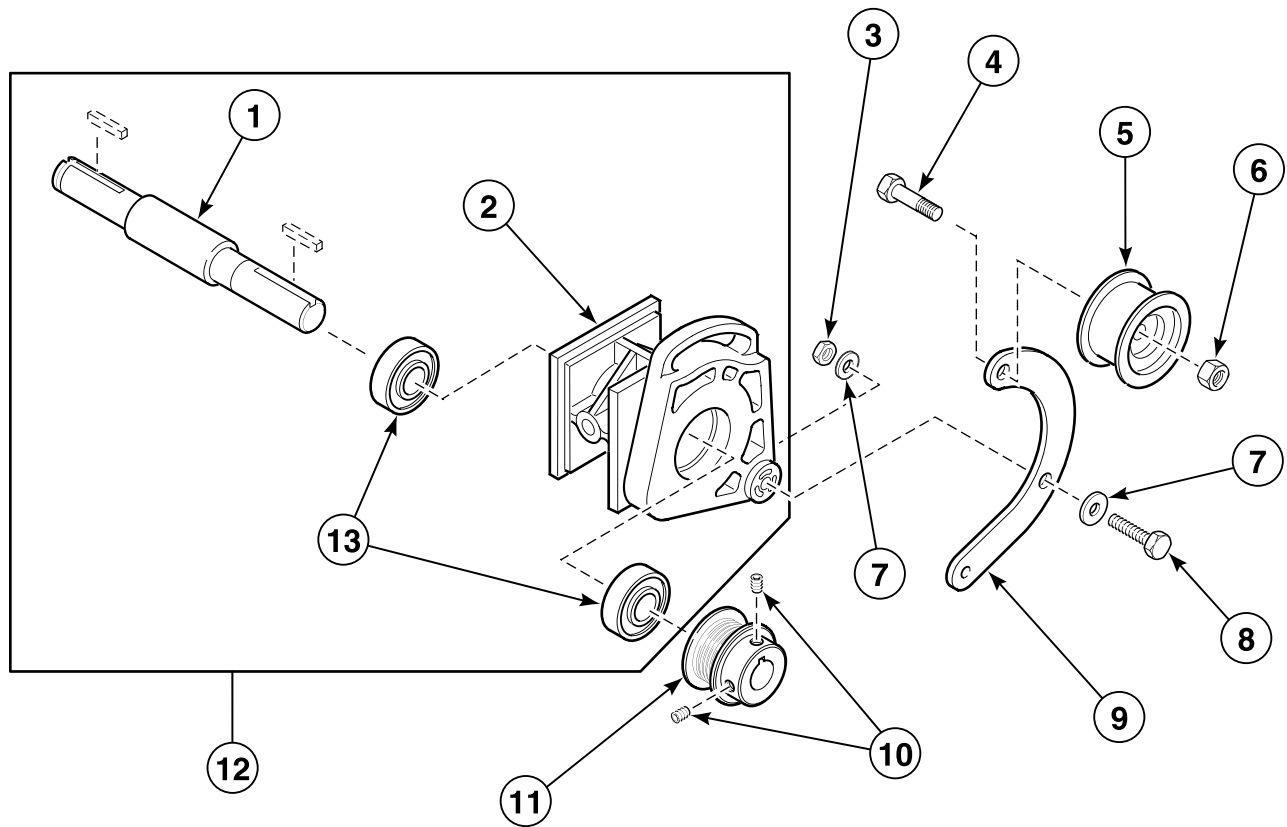
Models Starting Serial No. XTEK684495XN



T312PZ3A_M414037

ST3 P23

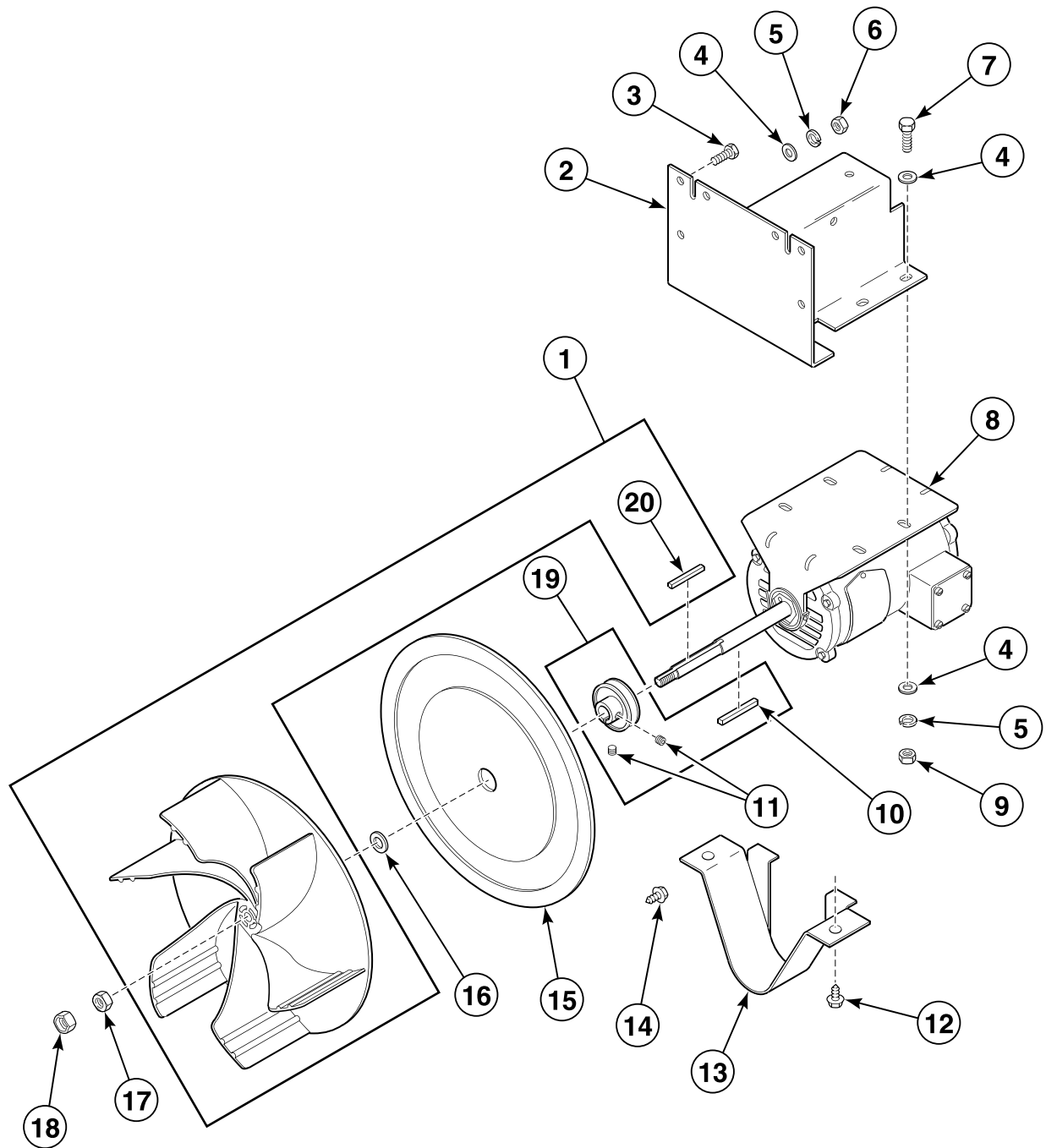
Belt Drive Idler Housing Assembly



T313P_M414037

ST3 P24

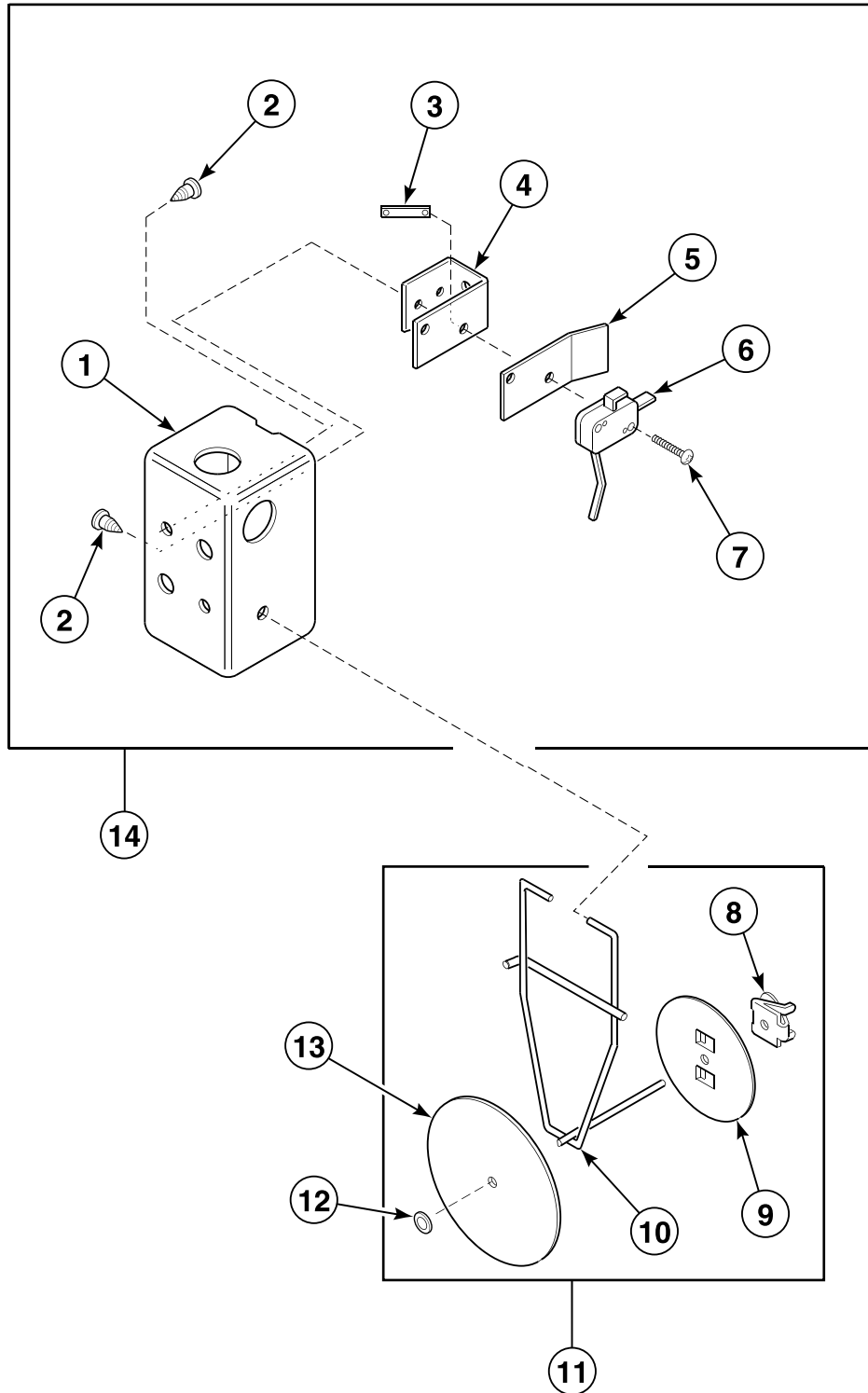
Fan and Motor Assembly



T032PZ3D_M414037

ST3 P25

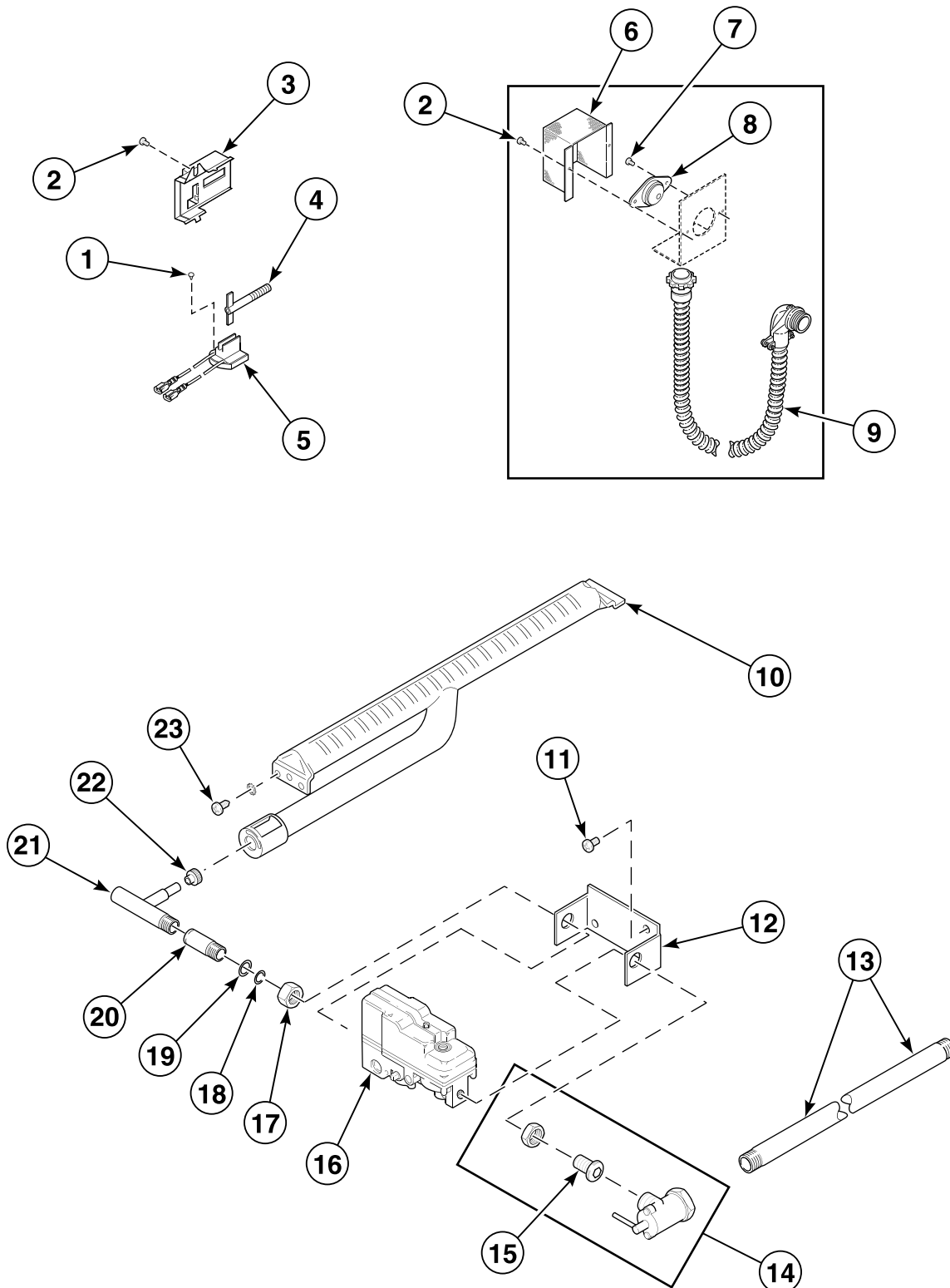
Airflow Switch and Vane Assembly



T356P_M414037

ST3 P26

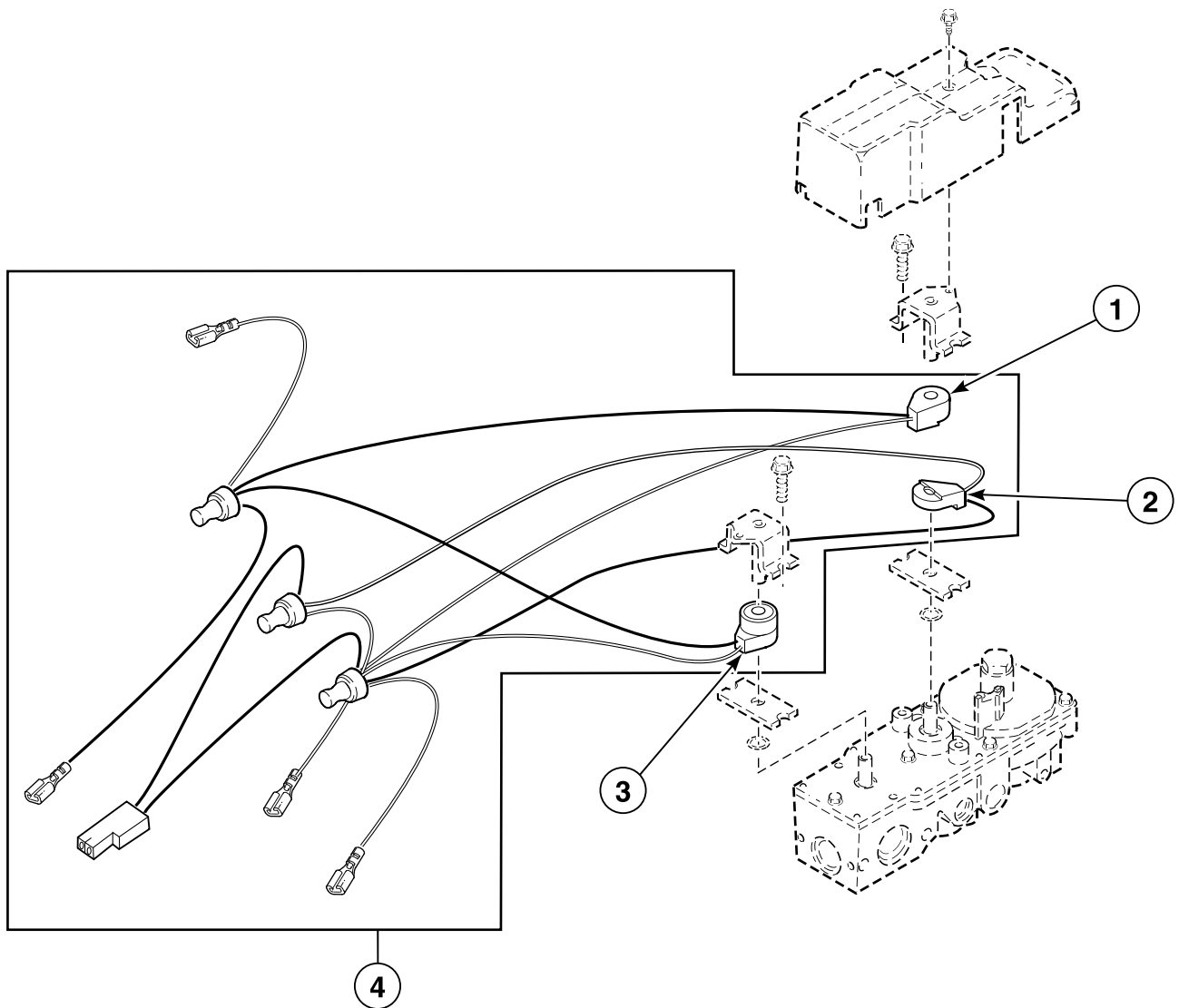
Burner Assembly for Glowbar Ignition



T358P_M414037

ST3 P27

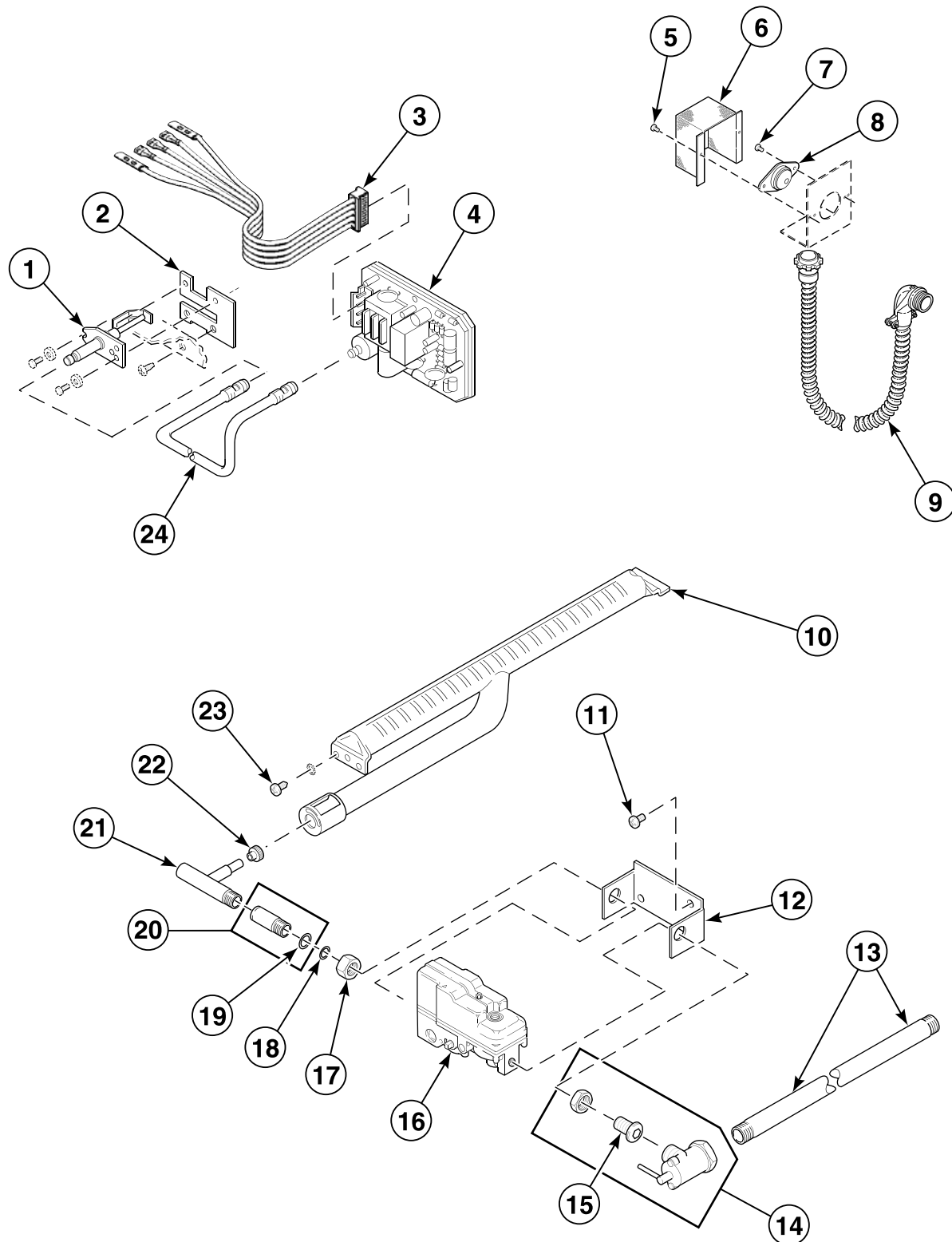
Gas Valve Coils and Conversion Kits for Glowbar Ignition



T359P_M414037

ST3 P28

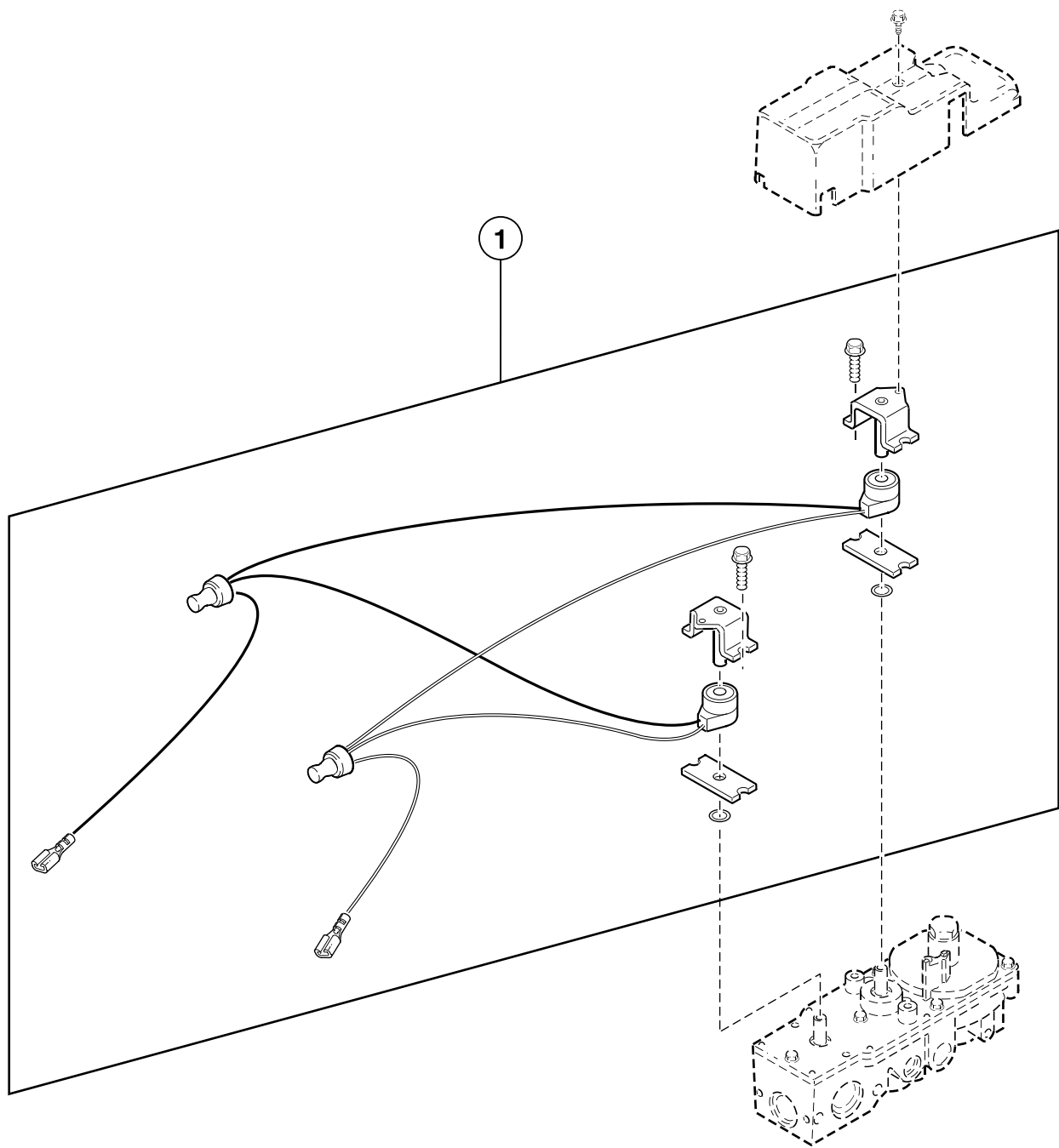
Burner Assembly for Instant Electronic Ignition



T360P_M414037

ST3 P29

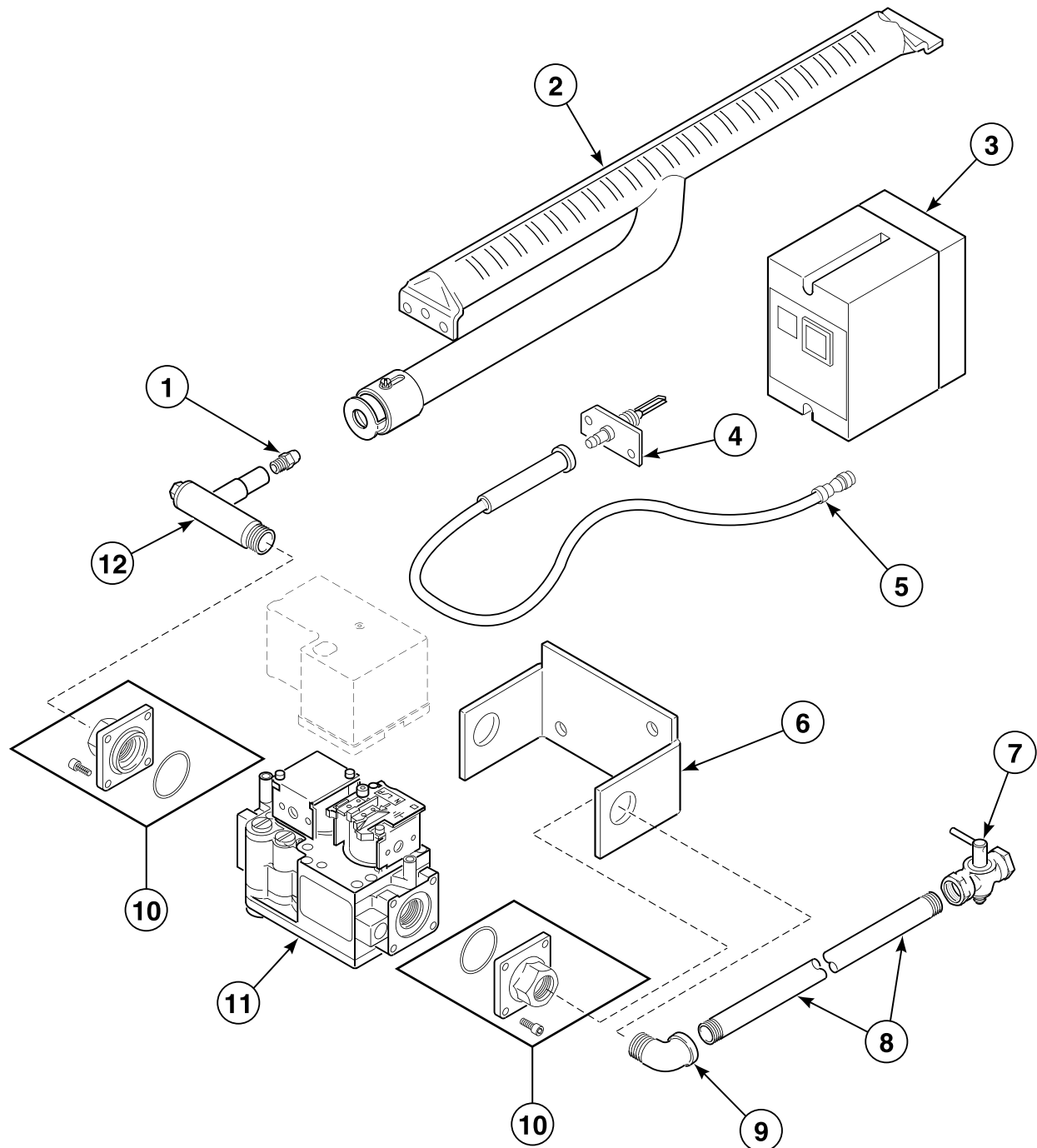
Gas Valve Coils and Conversion Kits for Instant Electronic Ignition



T361P_M414037

ST3 P30

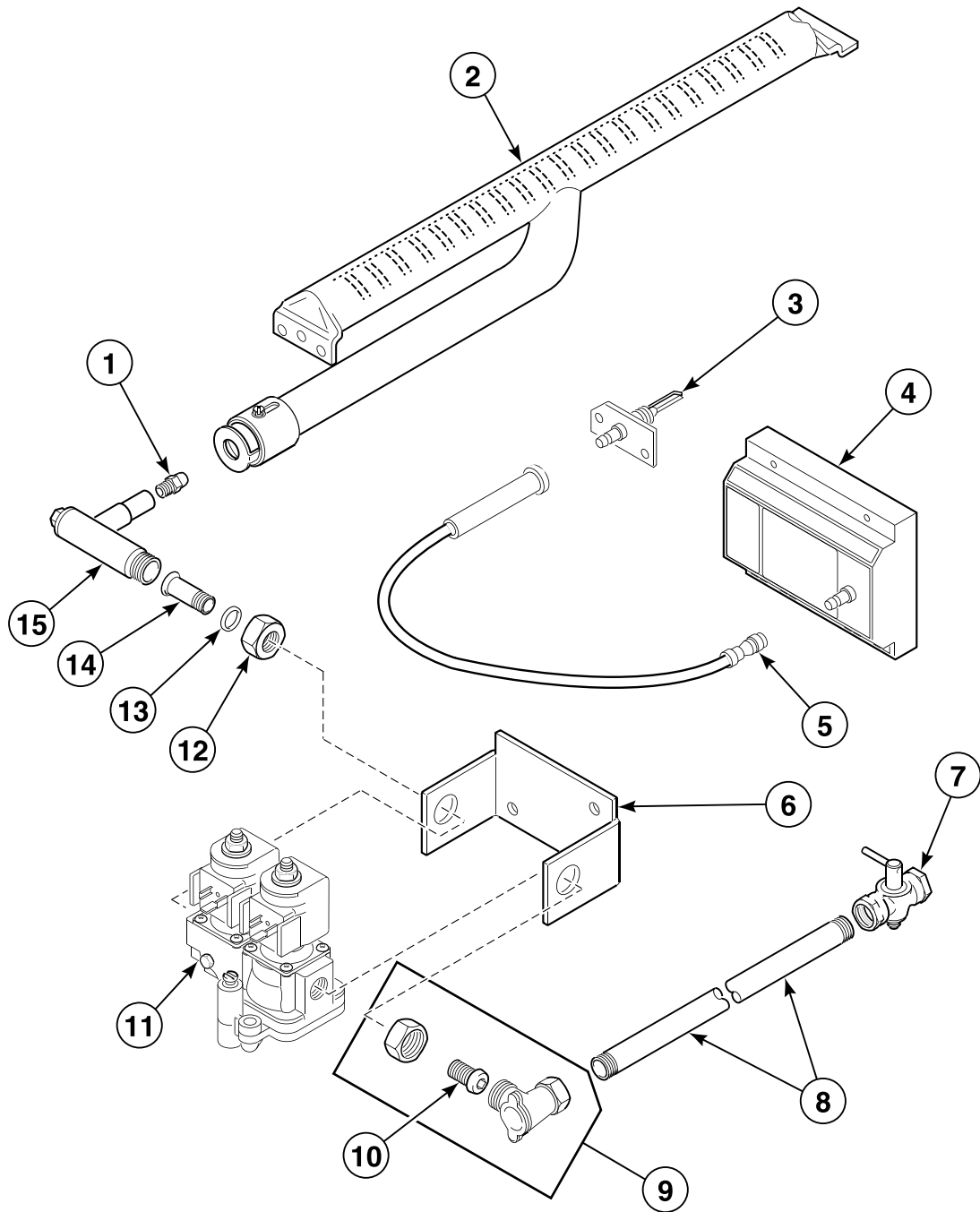
Gas Valve Assembly for Dungs/B-M System



TMB2253P_M414037

ST3 P31

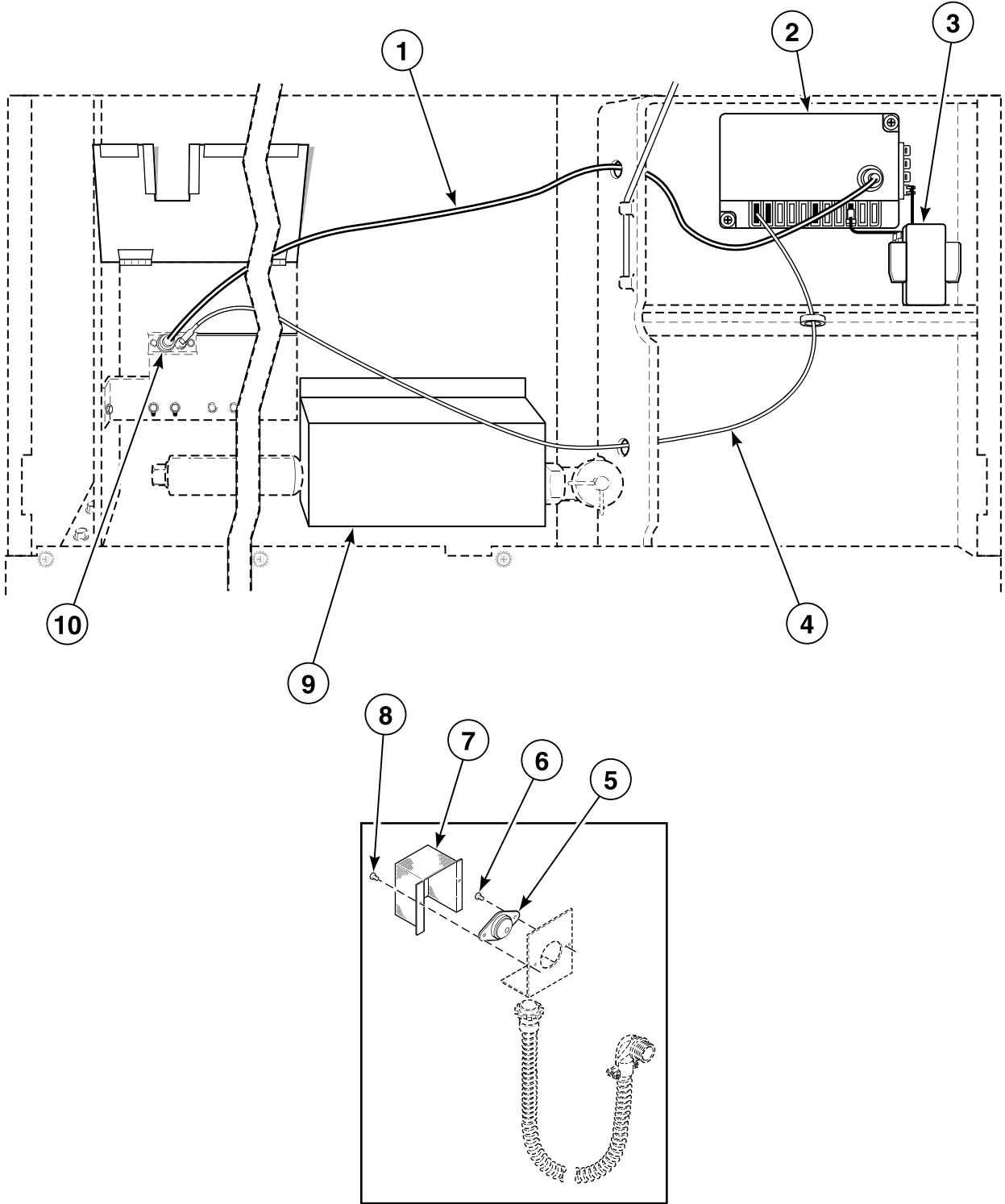
Channel/Johnson Gas System



TMB2254P_M414037

ST3 P32

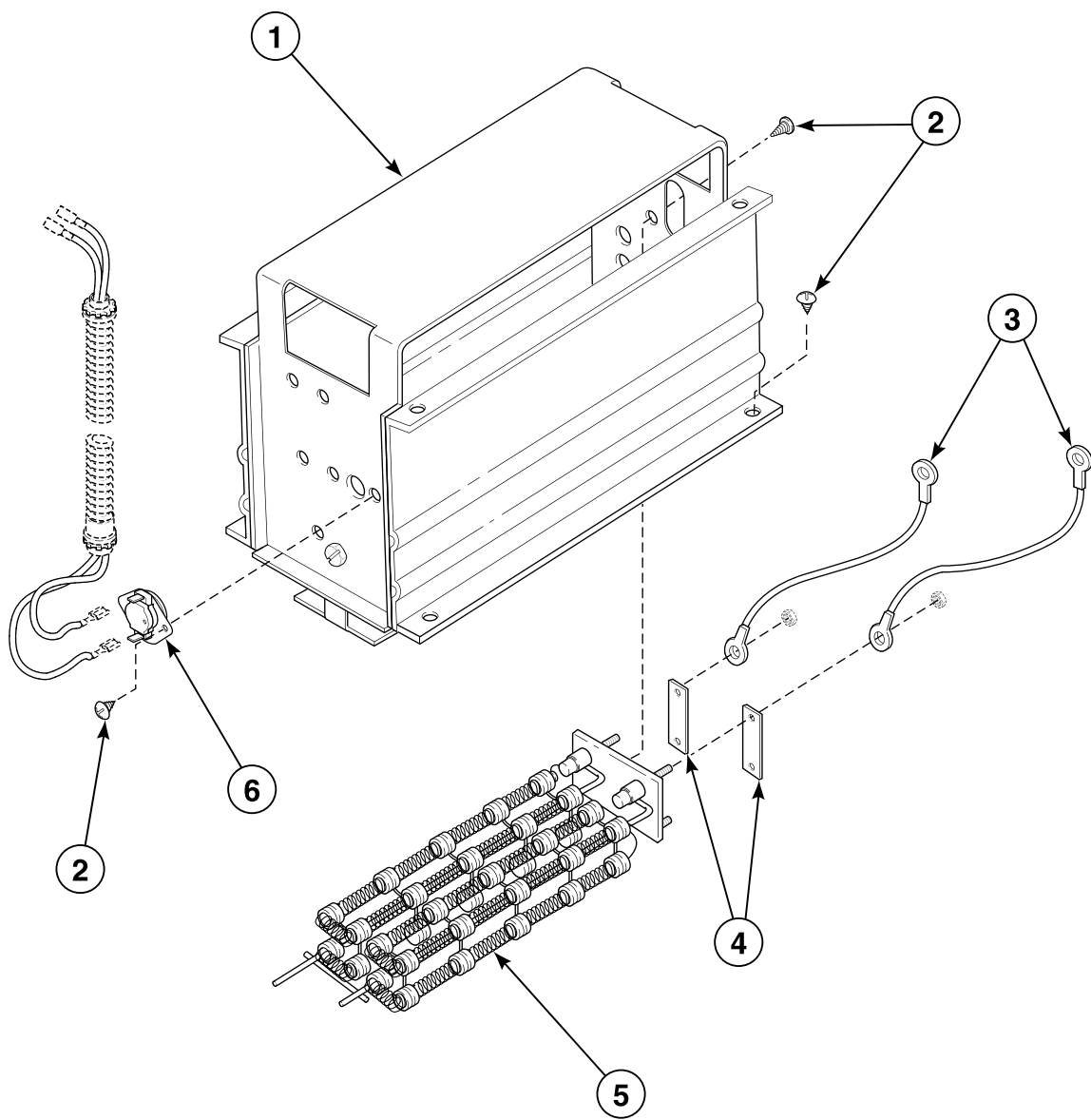
Burner Assembly for Australian Models



T517PE3B_M414037

ST3 P33

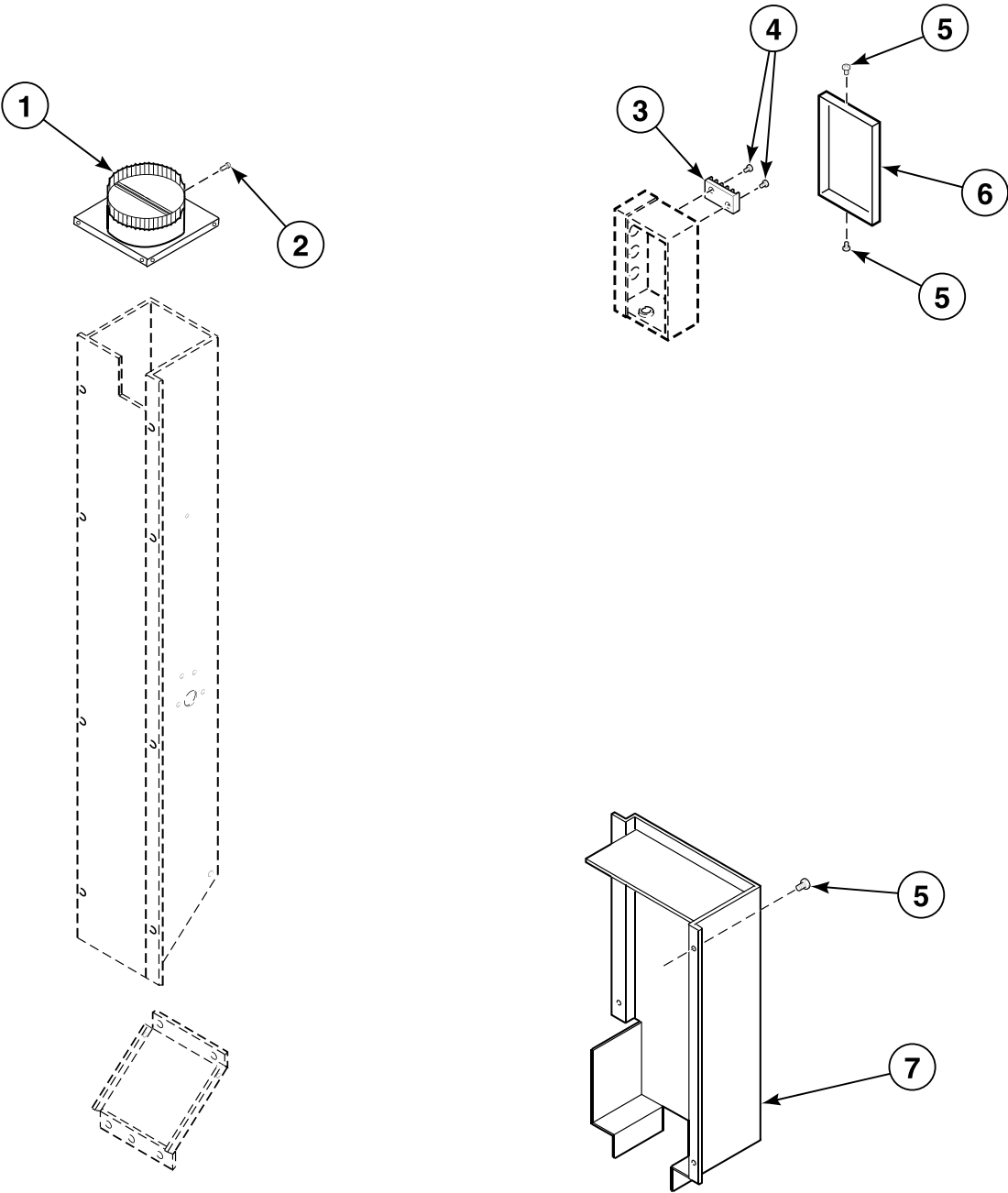
Electric Heater Assembly



T231P_M414037

ST3 P34

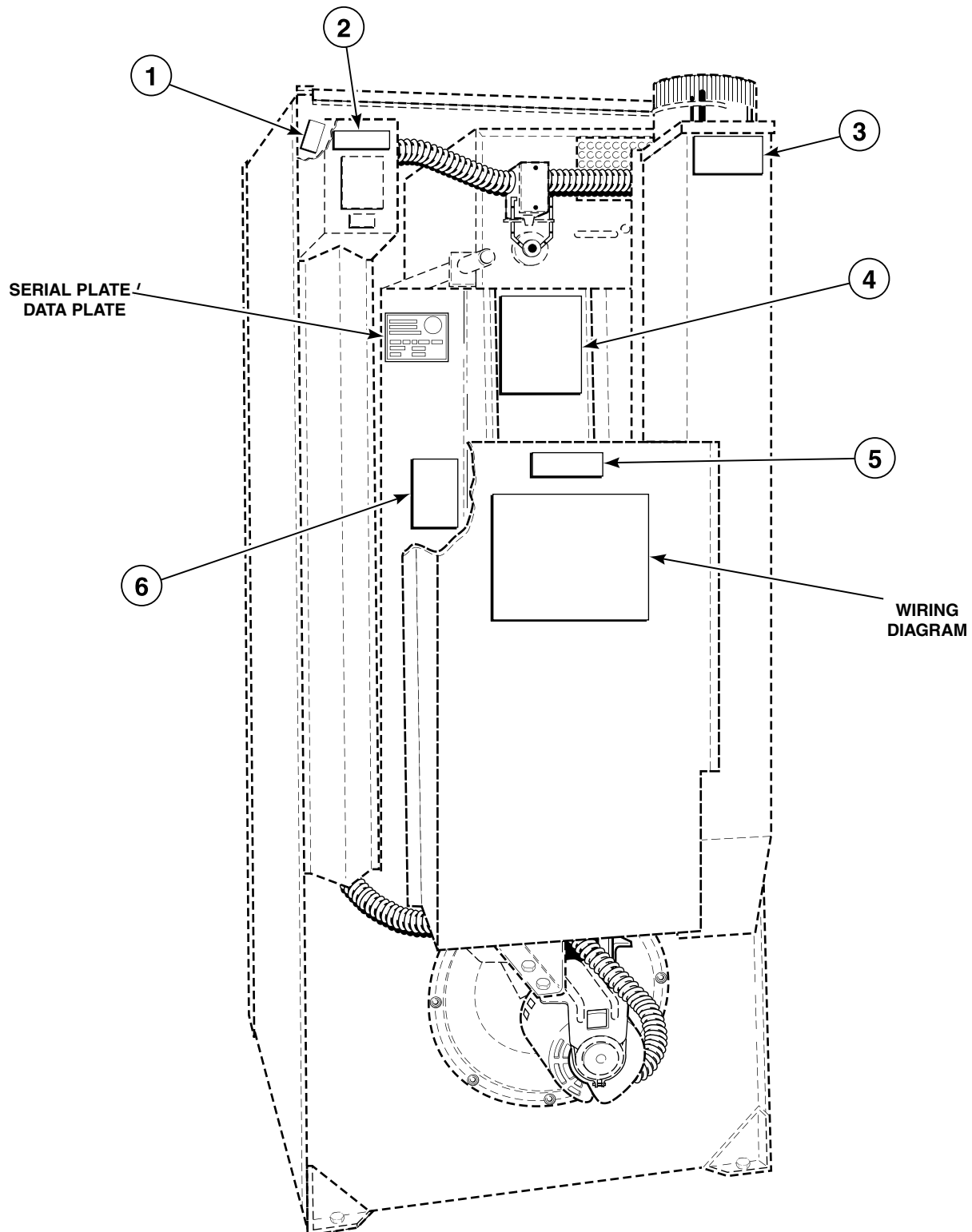
Rear Panel Covers



T362PZ3B_M414037

ST3 P35

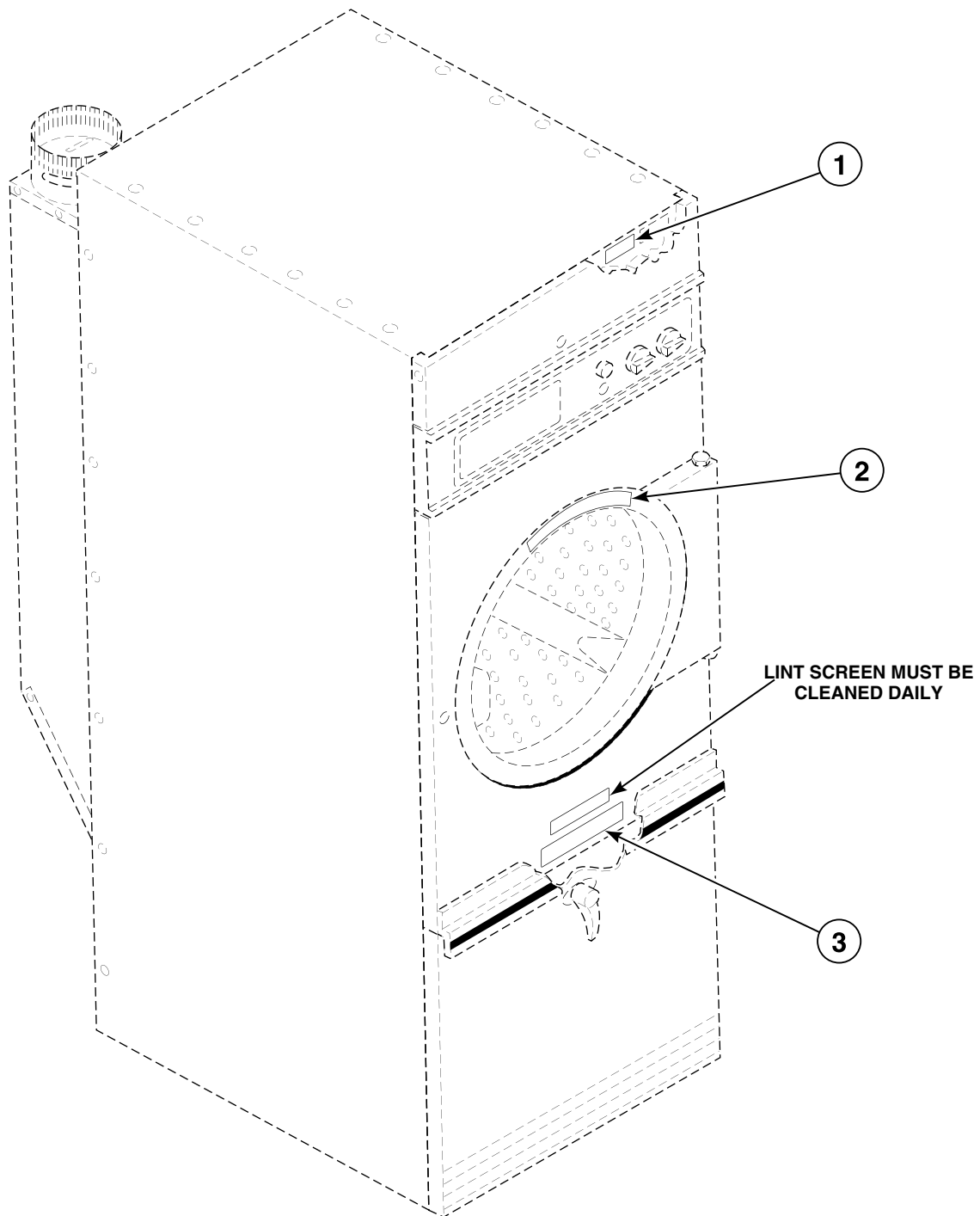
Warning Labels - Rear of Tumbler



T232P_M414037

ST3 P36

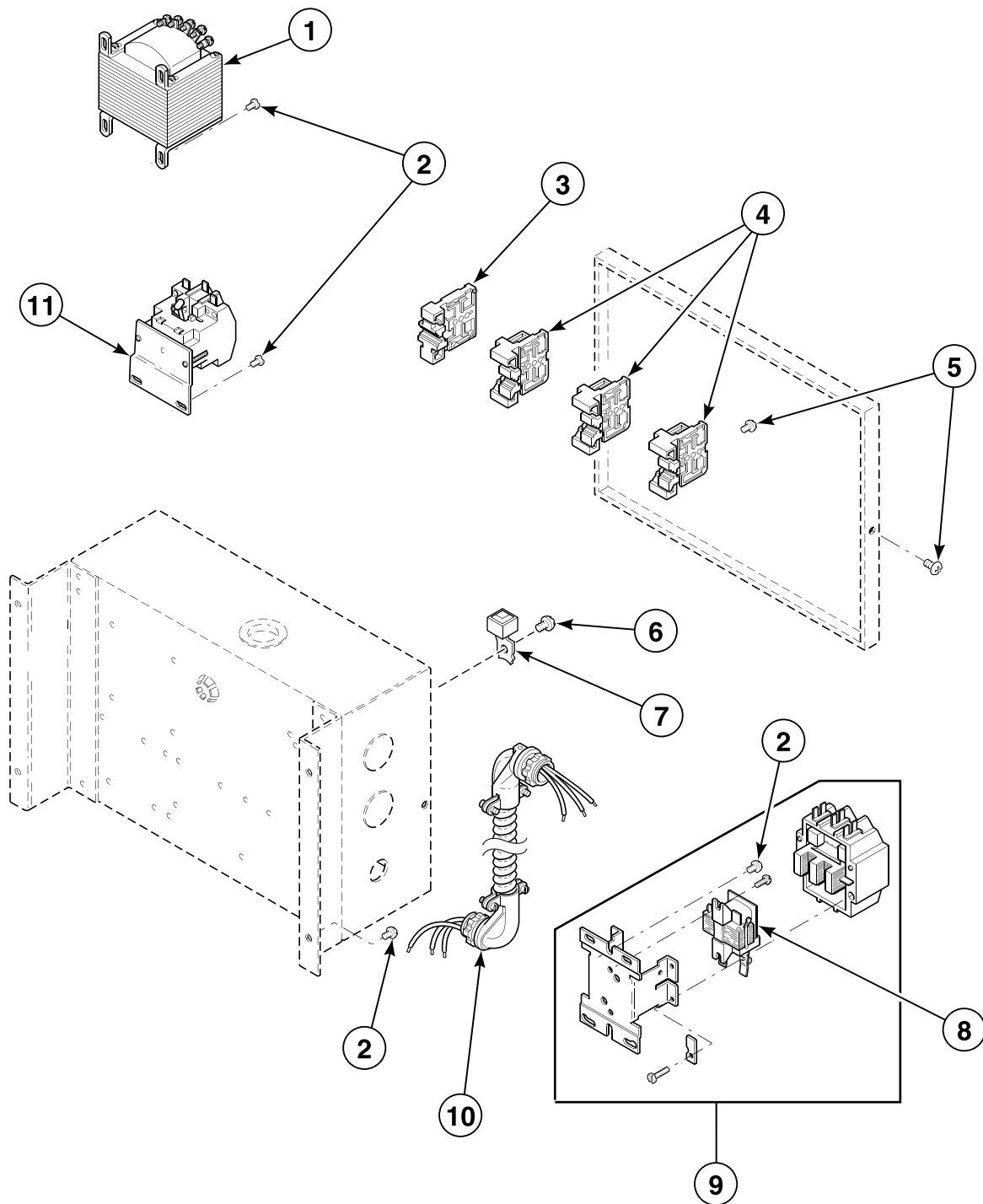
Warning Labels - Front of Tumbler



T230P_M414037

ST3 P37

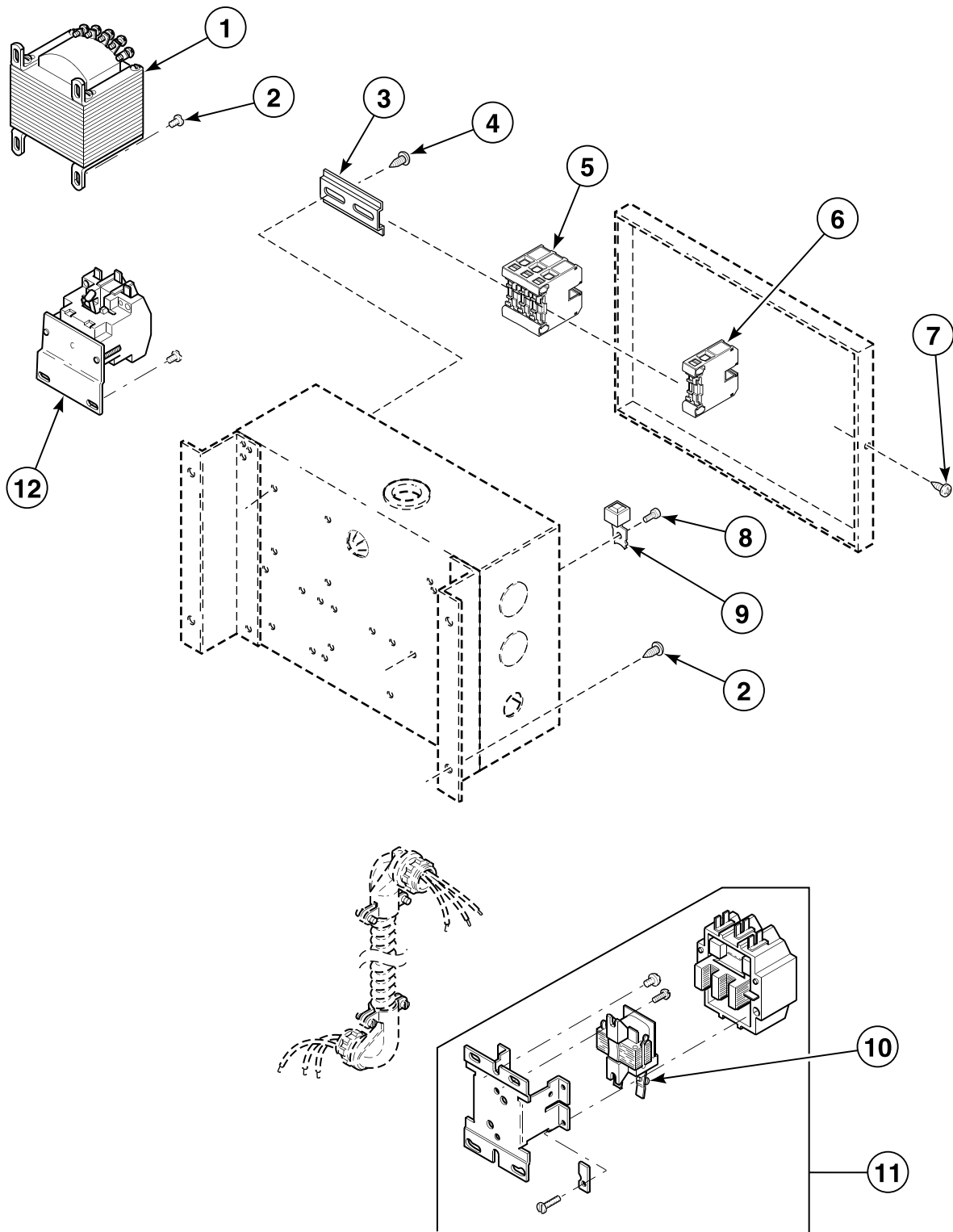
Electrical Contactor Box Assembly - Models Through Serial No. 9406xxxxx



T303PZ3C_M414037

ST3 P38

Electrical Contactor Box Assembly - Models Starting Serial No. 9406xxxxx

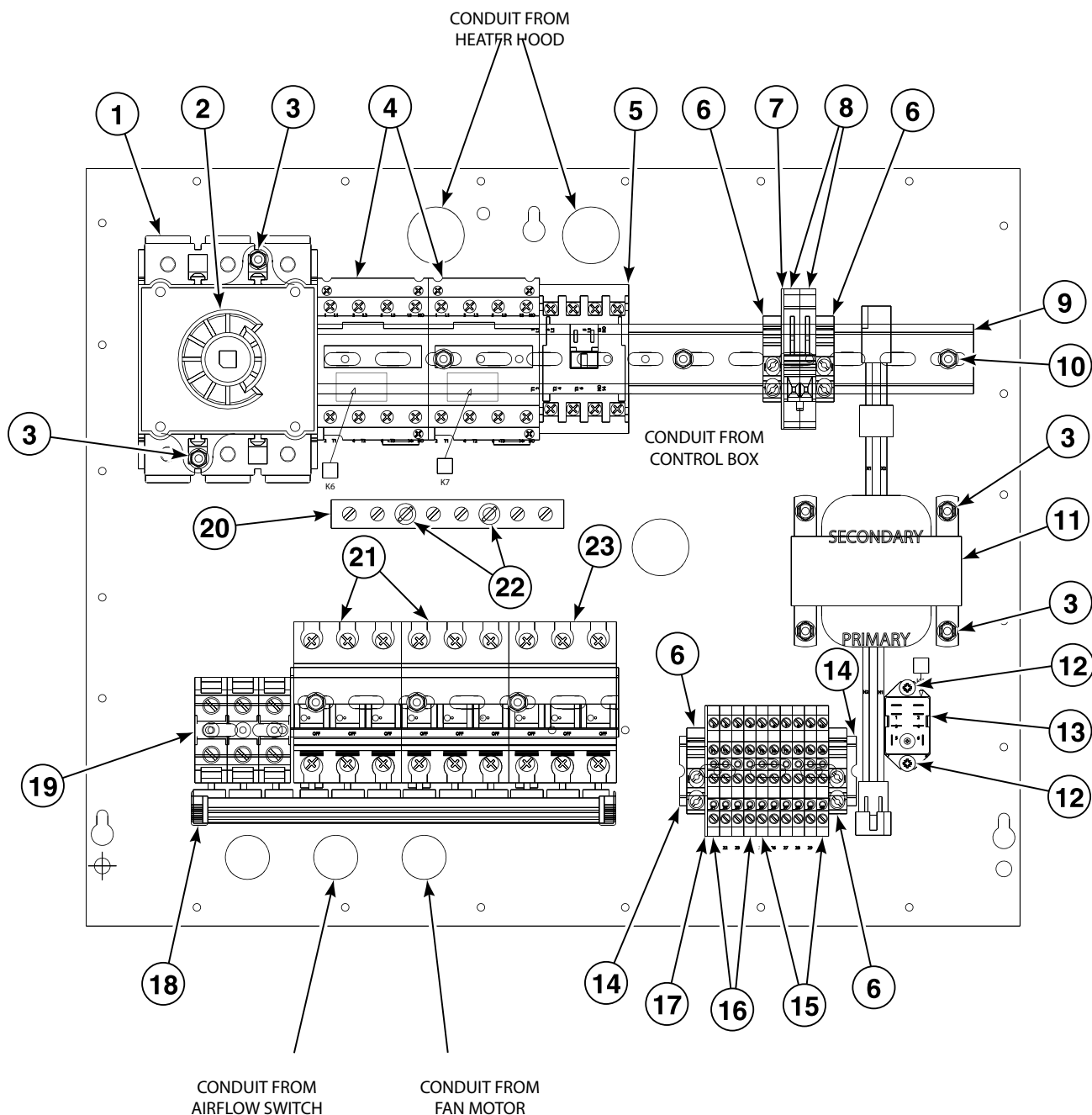


T364P_M414037

ST3 P39

Contactor Box Assembly for CE Electric Manual Timer and Coin Drop Models

230 Volt/50 Hertz/3 Phase

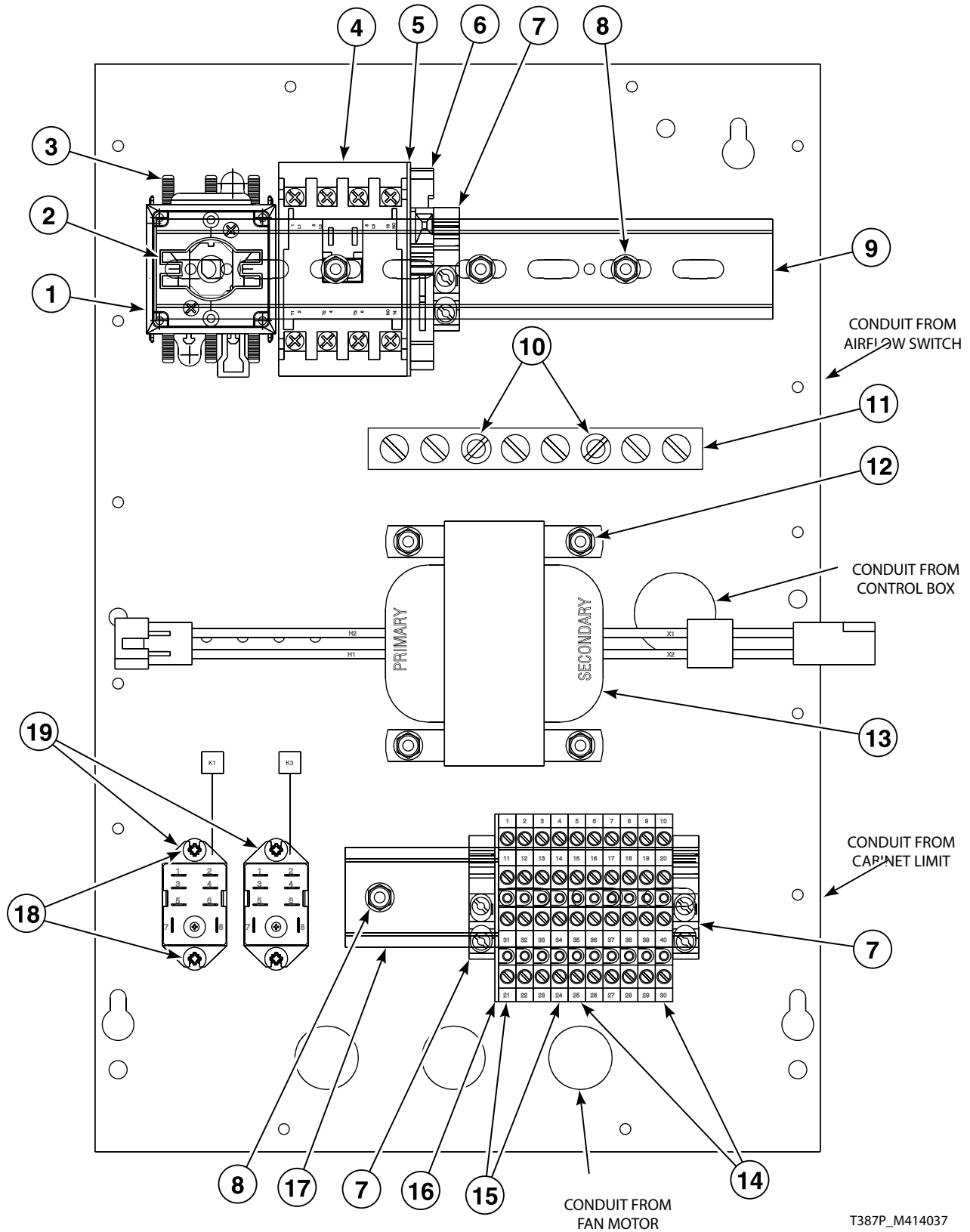


T385P_M414037

ST3 P40

Contactor Box Assembly for CE Gas Manual Timer Models

230 Volt/50 Hertz/1 Phase

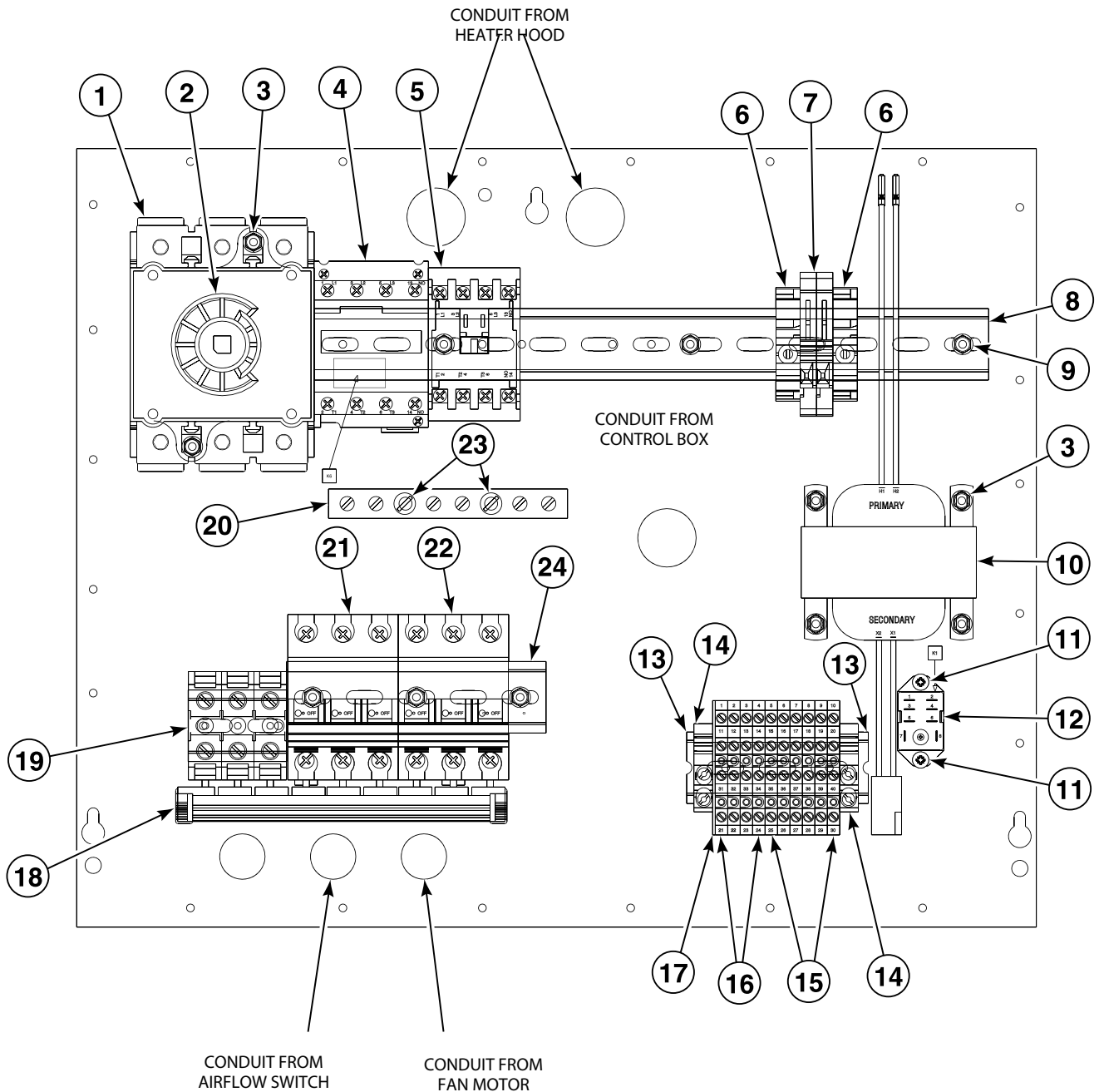


T387P_M414037

ST3 P41

Contactor Box Assembly for CE Electric Models with MT and CD Control Suffixes

400 Volt/50 Hertz/3 Phase

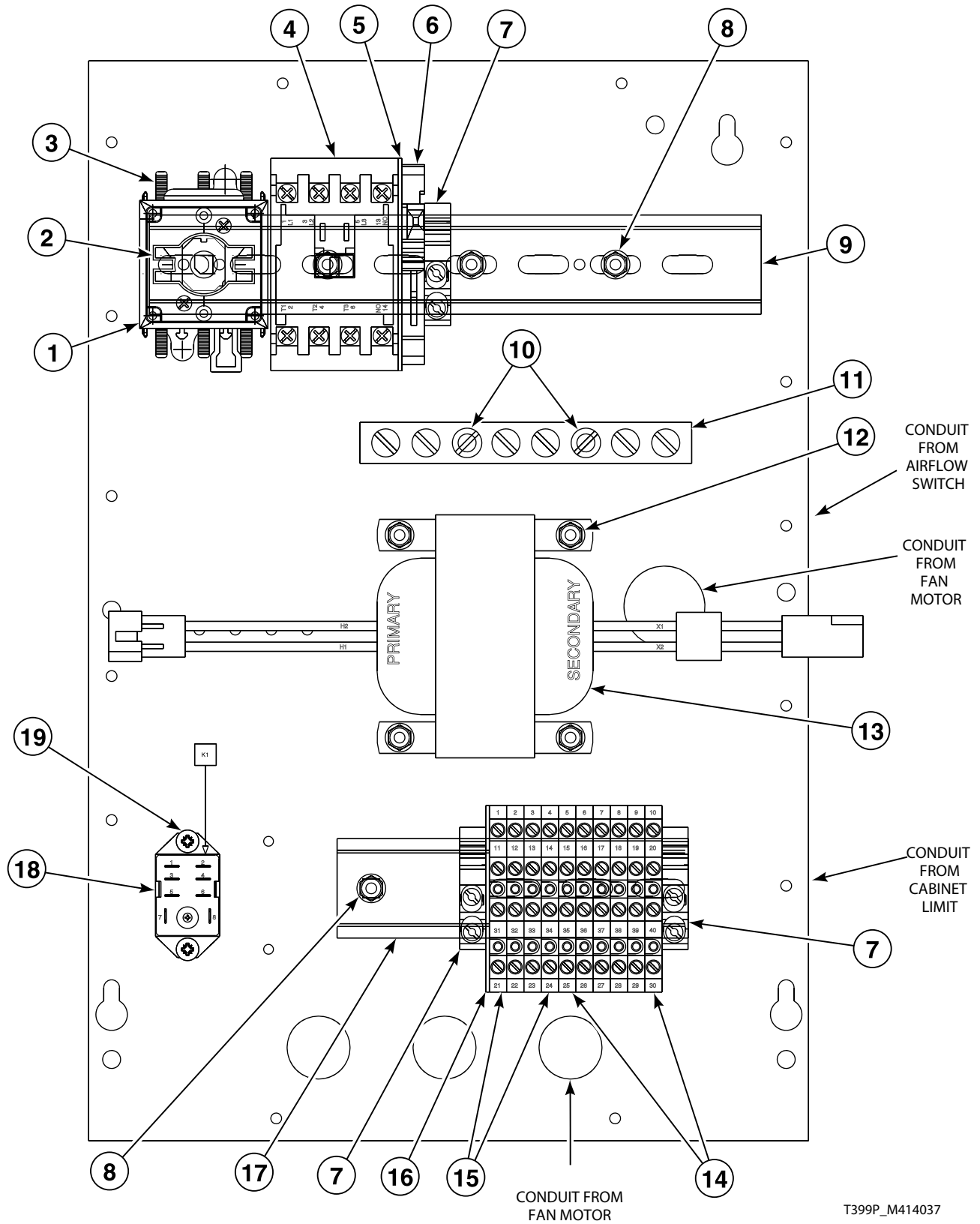


T391P_M414037

ST3 P42

Contactor Box Assembly for Gas Coin Drop Models

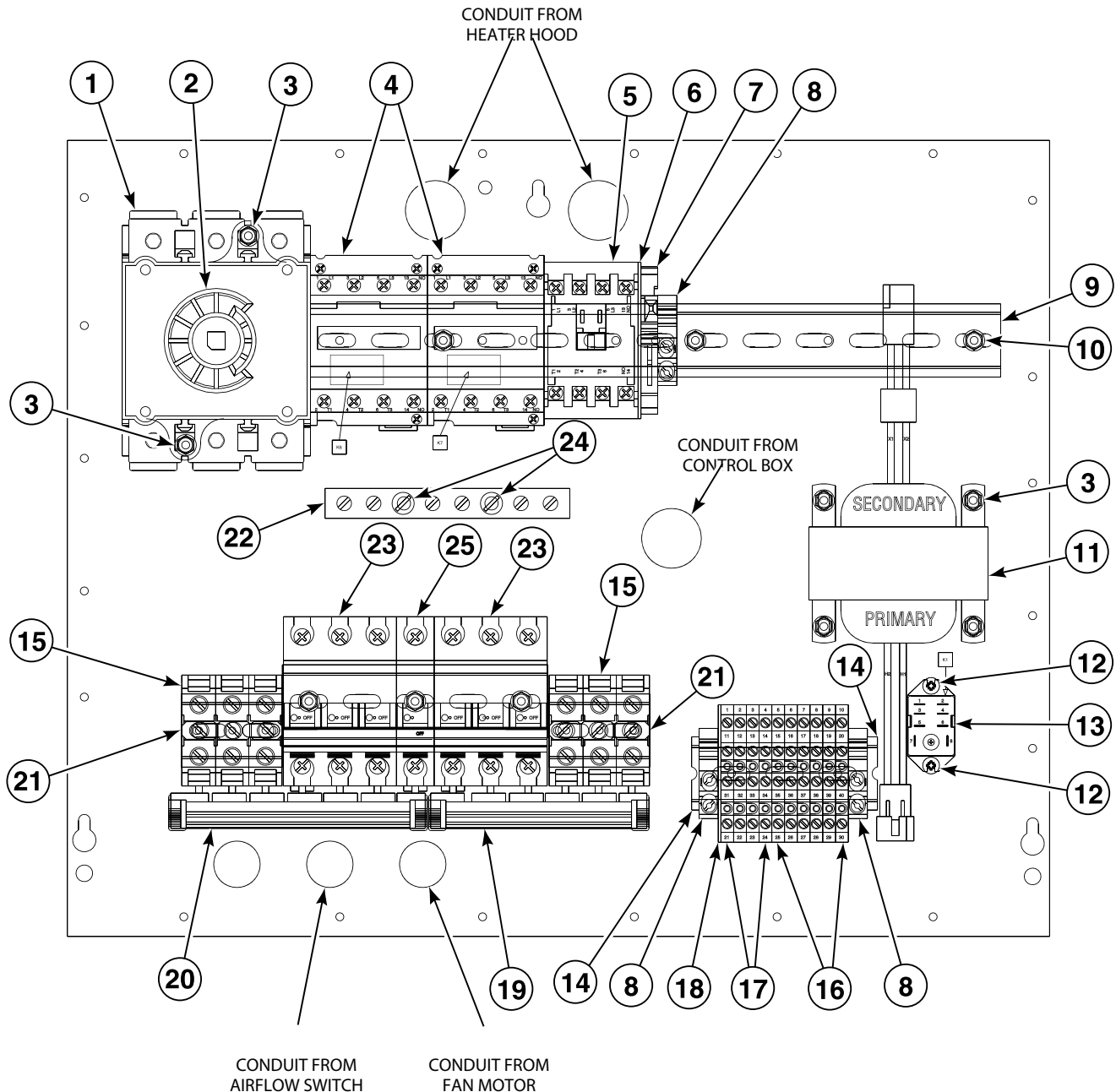
230 Volt/50 Hertz/1 Phase



ST3 P43

Contactor Box Assembly for Electric Coin Drop and Manual Timer Models

230 Volt/50 Hertz/1 Phase



T411P_M414037

ST3 P44