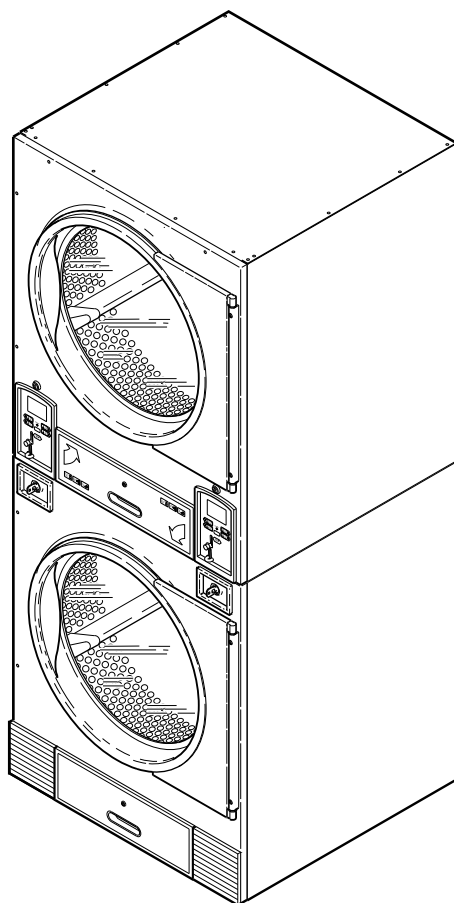


Drying Tumblers

Stack 30 Pound (300 Liter) Capacity **ST4**

Refer to Page 3 for Model Numbers



T464P_70185001

Parts



Parts Ordering Information

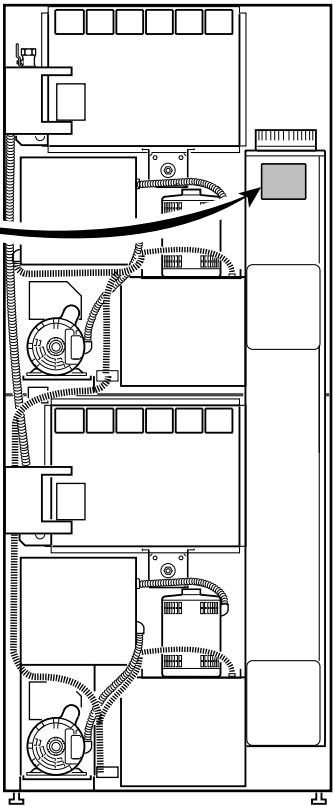
If literature or replacement parts are required, contact the source from whom the machine was purchased or contact Alliance Laundry Systems at for the name and address of the nearest authorized parts distributor.

For technical assistance, call either of the numbers listed below:

Serial Plate Location

When calling or writing about your product, be sure to mention model and serial numbers. Model and serial numbers are located on serial plate(s) as shown.

MODEL NO:		
SERIAL NO:		
V-/	HERTZ/ PHASE	
AMPS,	WIRES + GROUND	
TOTAL kW,	MOTOR kW	
REQ'D CIRCUIT BREAKER: AMPS		
FAN OUTPUT:		
@ MAX	*WC STATIC PRESSURE	
EQUIPPED FOR: GAS @ *WC MANIFOLD PRESS.		
MIN SUPPLY PRESSURE:	*WC.	MAX SUPPLY PRESSURE: *WC.
INPUT: BTU/hr @		BTU/cu.ft.
MADE IN U.S.A./FABRIQUE AU ETATS UNIS/FABRICADO EN LOS ESTADOS UNIDOS 70051001		



TMB1961P_70185001

Model Identification

Information in this manual is applicable to these tumbler models:

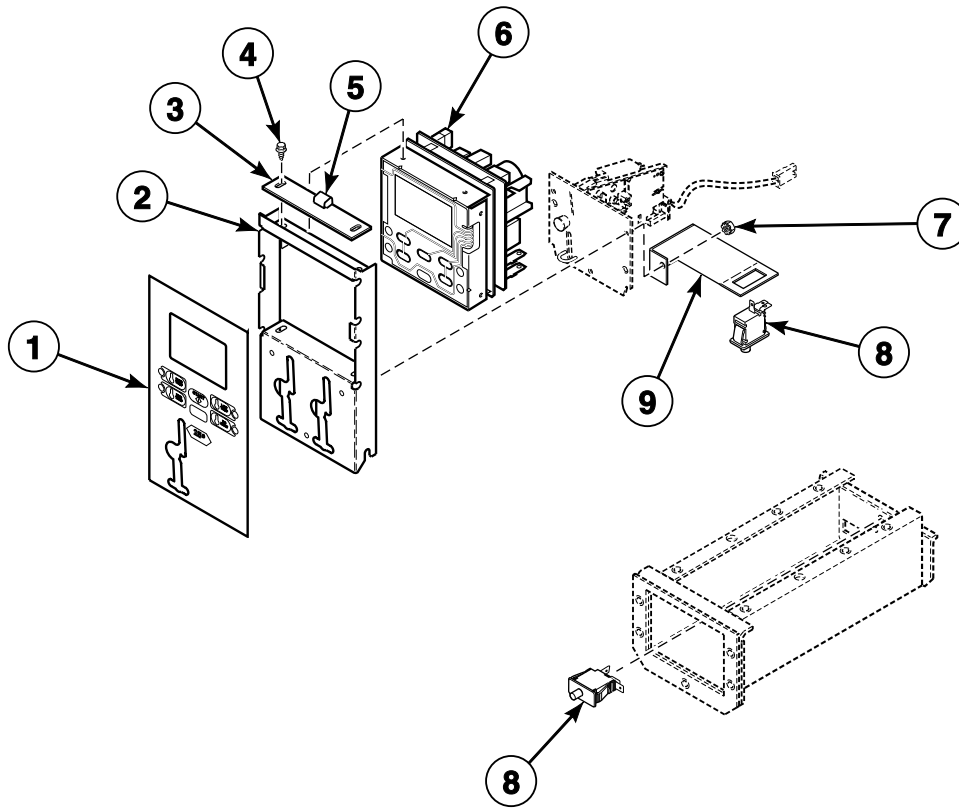
DC0300DEL	JA0300DRG	LT0300DRG	SA0300DRG
DC0300DFG	JC0300DEL	NT0300DRG	SC0300DEL
DC0300DRG	JC0300DFG	PC0300DEL	SC0300DFG
DC0300DSL	JC0300DRG	PC0300DFG	SC0300DRG
DT0300DEL	JC0300DSH	PC0300DRG	SC0300DSH
DT0300DFG	JC0300DSL	PC0300DSL	SC0300DSL
DT0300DRG	JT0300DEL	PT0300DEL	ST0300DEL
DT0300DSH	JT0300DFG	PT0300DFG	ST0300DFG
DT0300DSL	JT0300DRG	PT0300DRG	ST0300DRG
	JT0300DSH		ST0300DSH
	JT0300DSL		ST0300DSL

Control Suffixes (10th and 11th characters):

CD - rotary coin drop	MT - manual timer	ZC - NetMaster coin - network ready
EC - electronic coin	NC - NetMaster coin	ZR - NetMaster card - network ready
EP - electronic card reader	NR - NetMaster card	ZX - NetMaster prep for coin - network ready
EX - electronic coin ready	NX - NetMaster prep for coin	ZY - NetMaster prep for card - network ready
EY - electronic card ready	NY - NetMaster prep for card	

Electronic Coin Drop Components

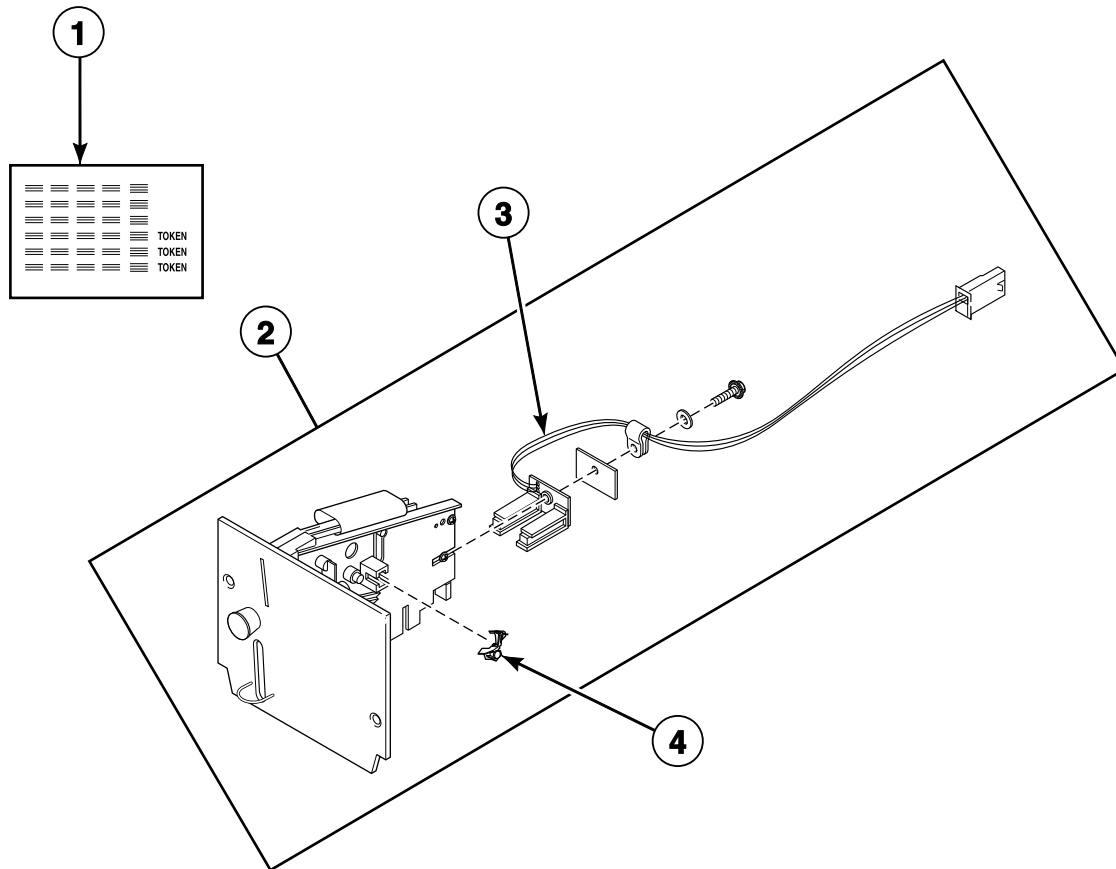
Models with EC Control Suffix



TMB2069P_70185001

ST4 P1

Coin Drop Assemblies

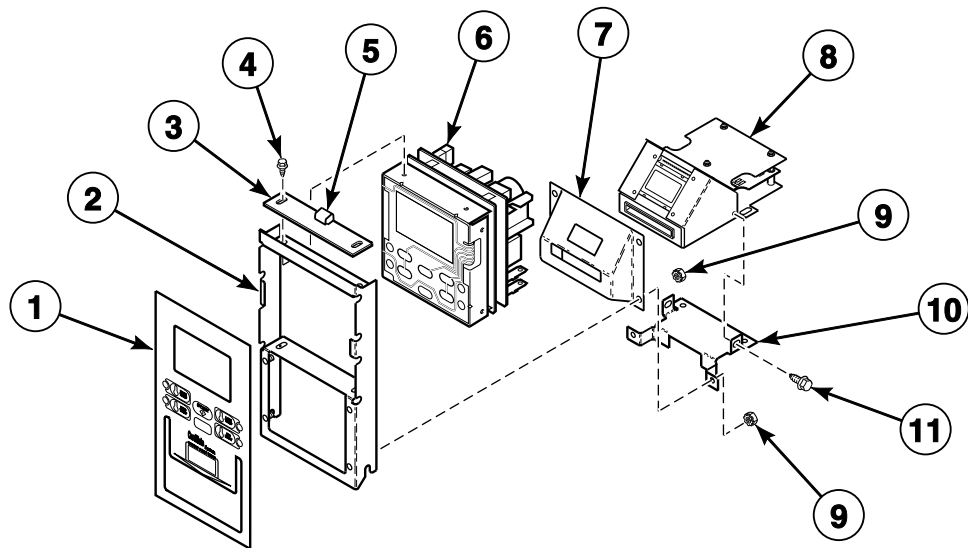


TMB2904P_70185001

ST4 P2

Card Reader Control Components

Models with EP Control Suffix

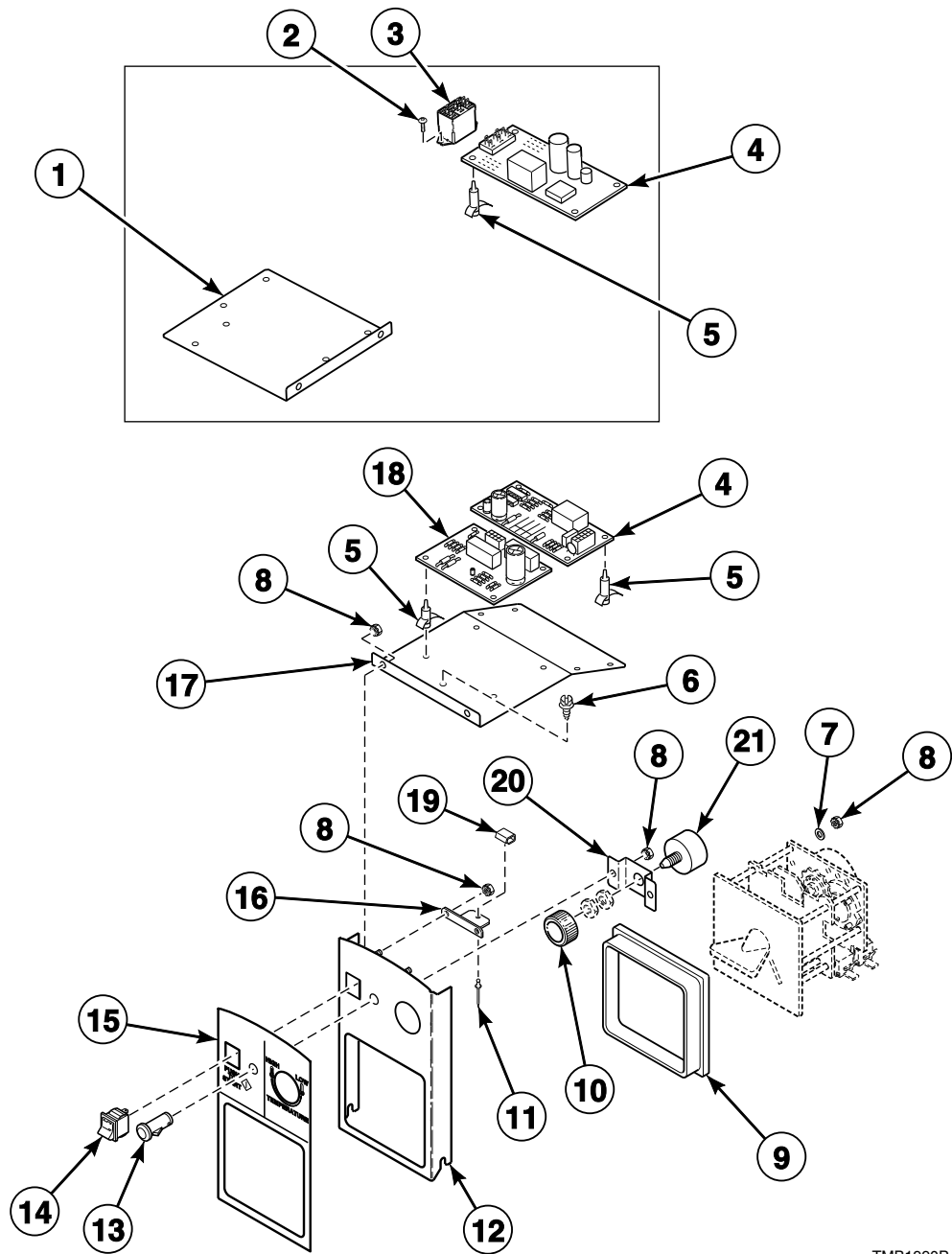


T429P_70185001

ST4 P3

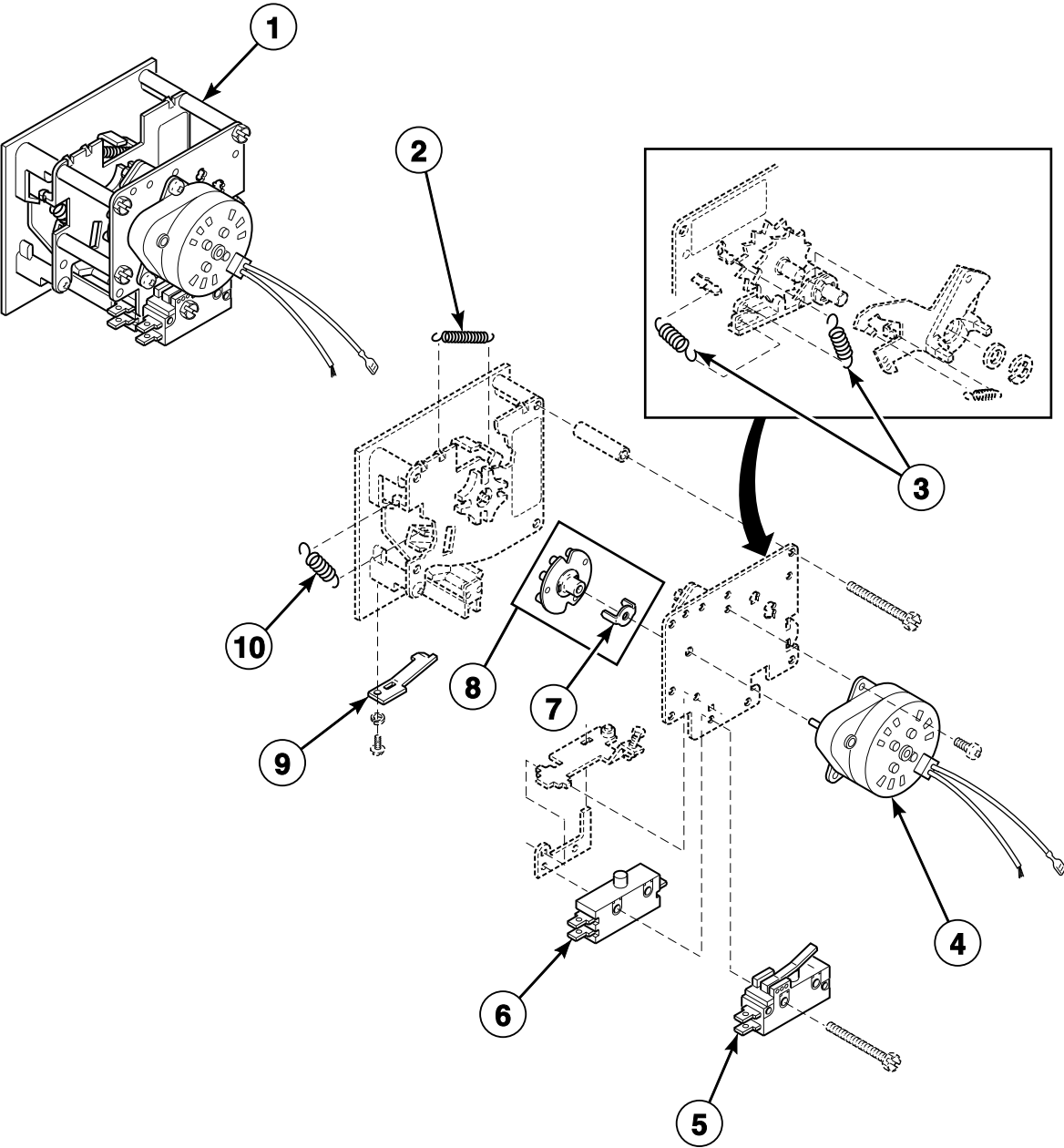
Electromechanical Coin Drop Components

Models with CD Control Suffix



TMB1990P_70185001

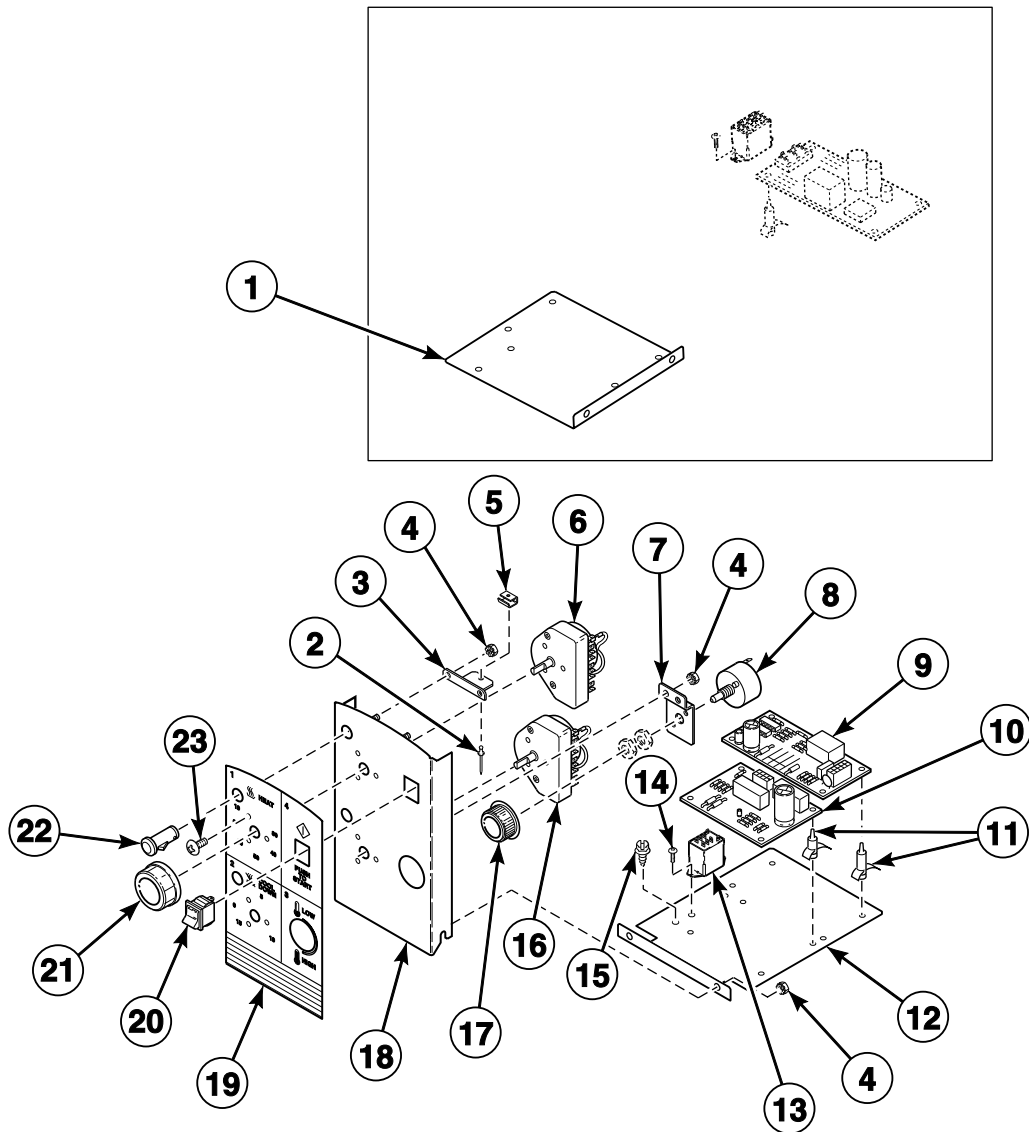
Coin Meters and Components



T022P_70185001

Manual Dual Timer Control

Models with MT Control Suffix

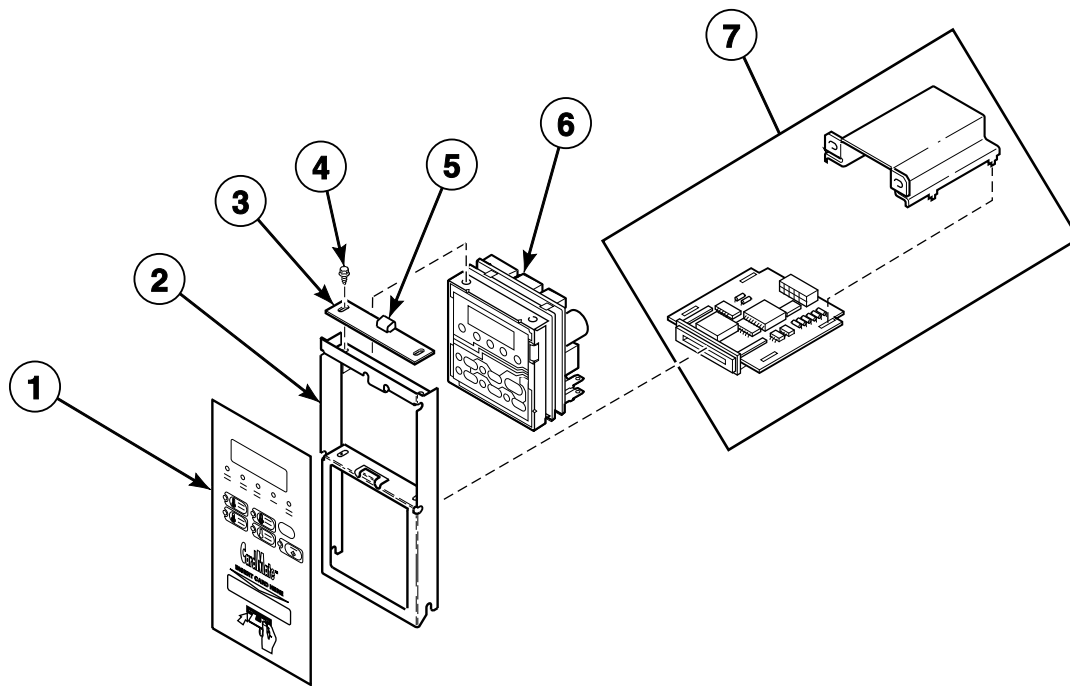


TMB1991P_70185001

ST4 P6

NetMaster Card Reader

Models with NR, NY, ZR and ZY Control Suffixes

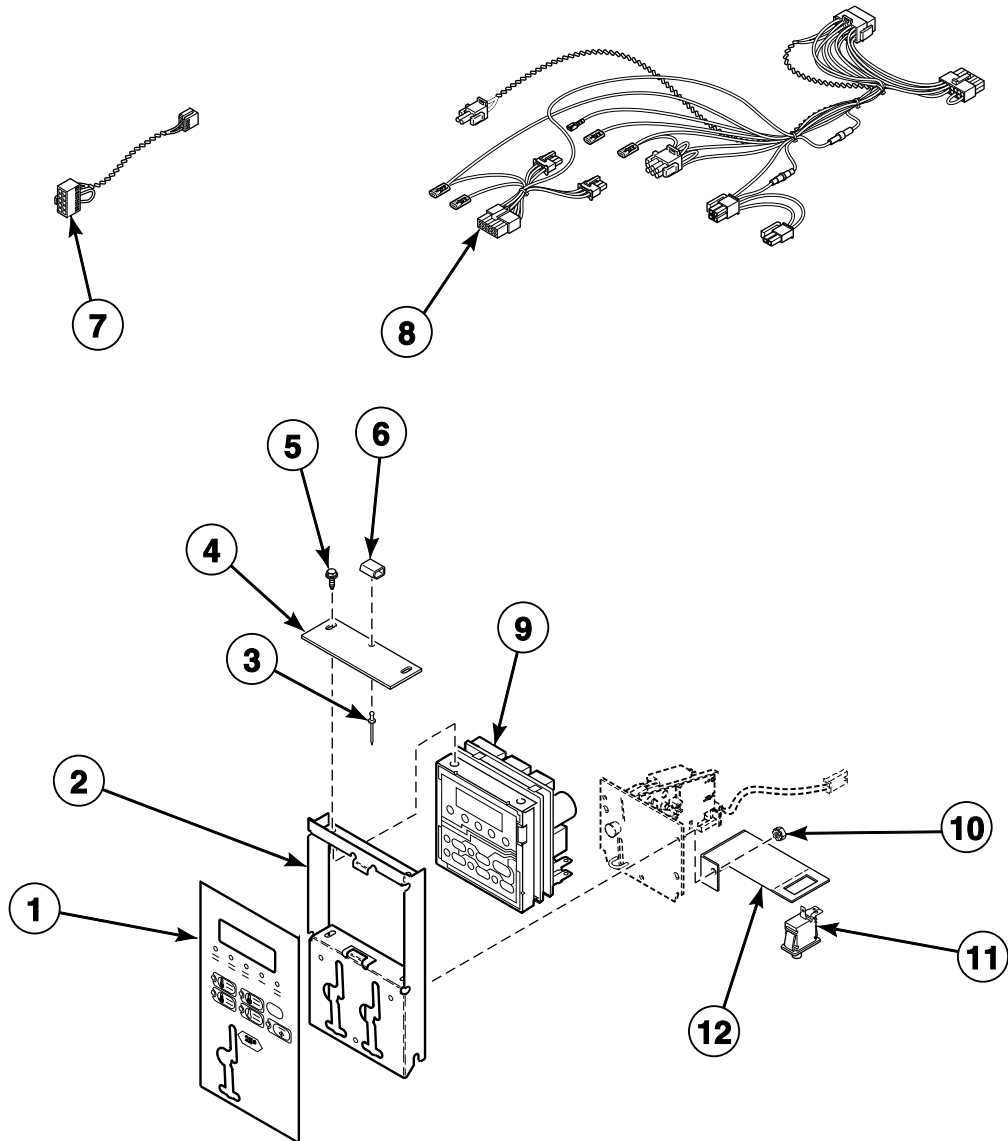


TMB368P_70185001

ST4 P7

NetMaster Coin Drop

Models with NC, NX, ZC and ZX Control Suffixes

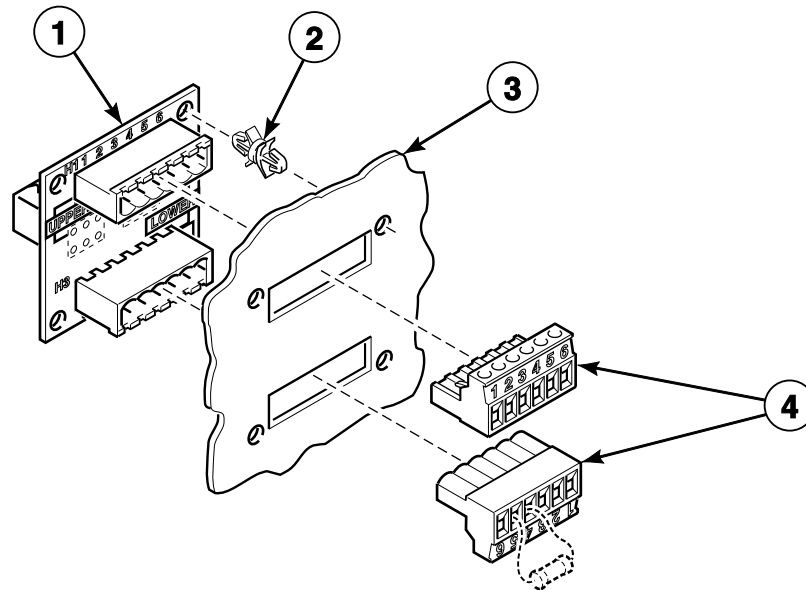


TMB2770P_70185001

ST4 P8

NetMaster Network Interface Board

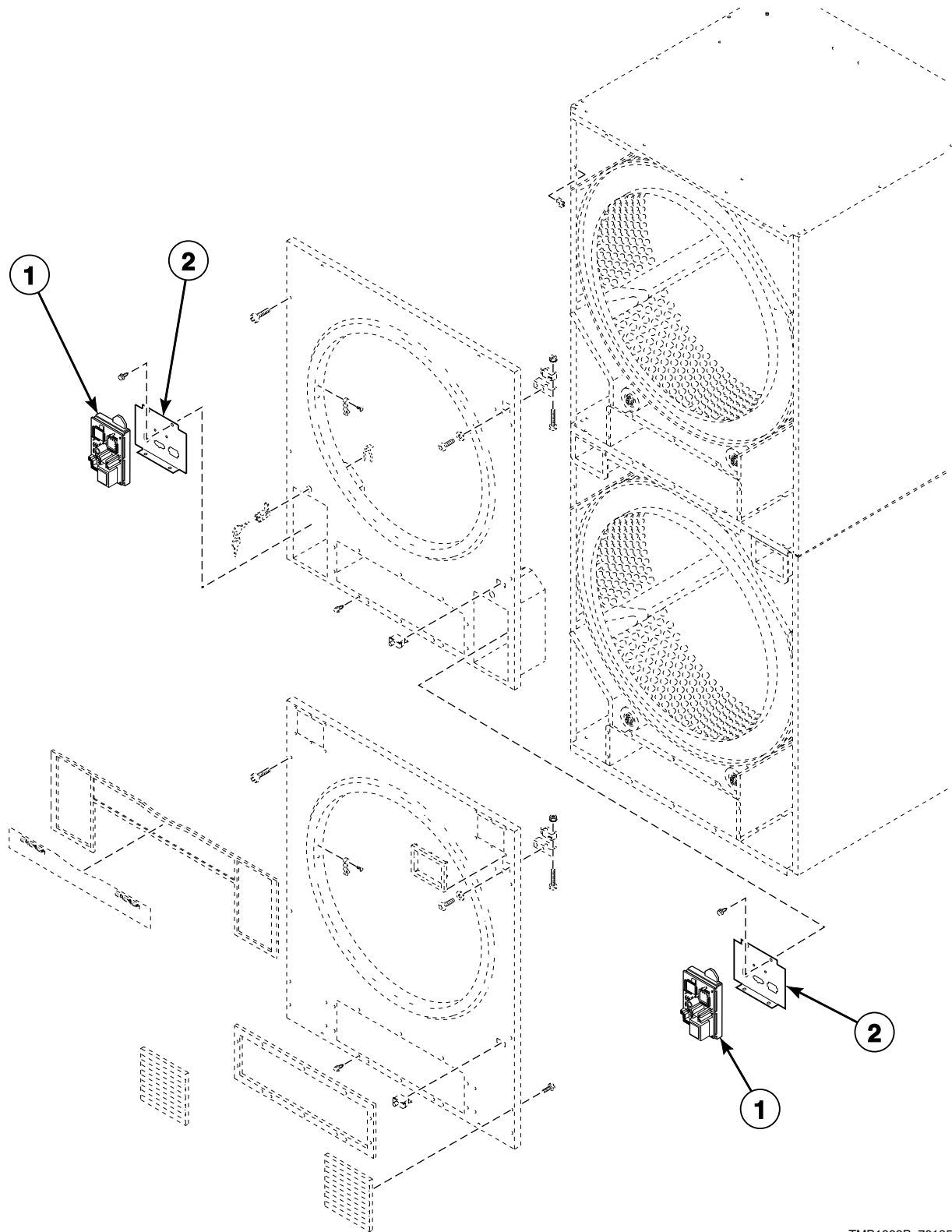
Models with ZC, ZR, ZX and ZY Control Suffixes



TMB1993P_70185001

NetMaster Network Board

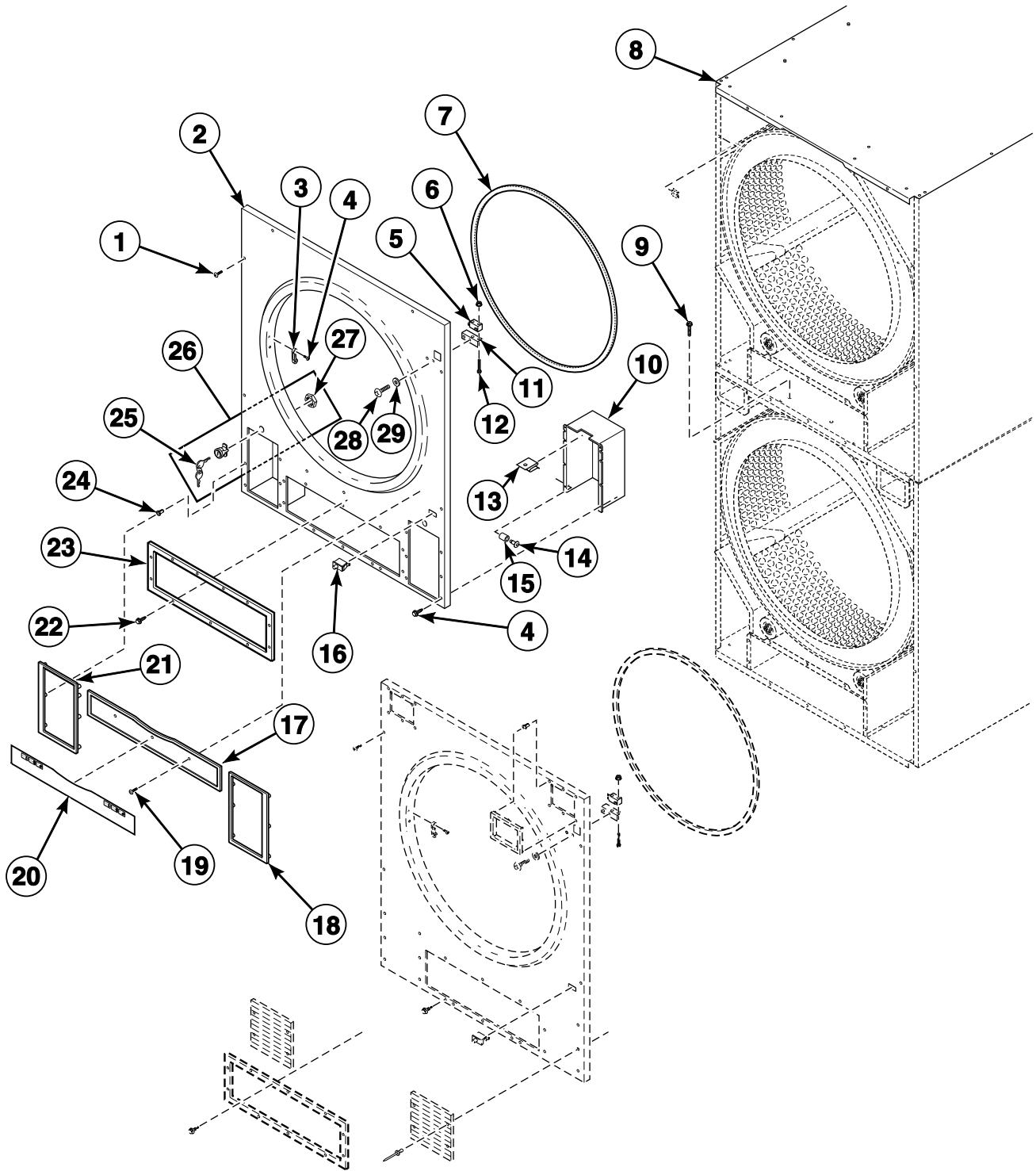
Models with ZC, ZR, ZX and ZY Control Suffixes



TMB1992P_70185001

ST4 P10

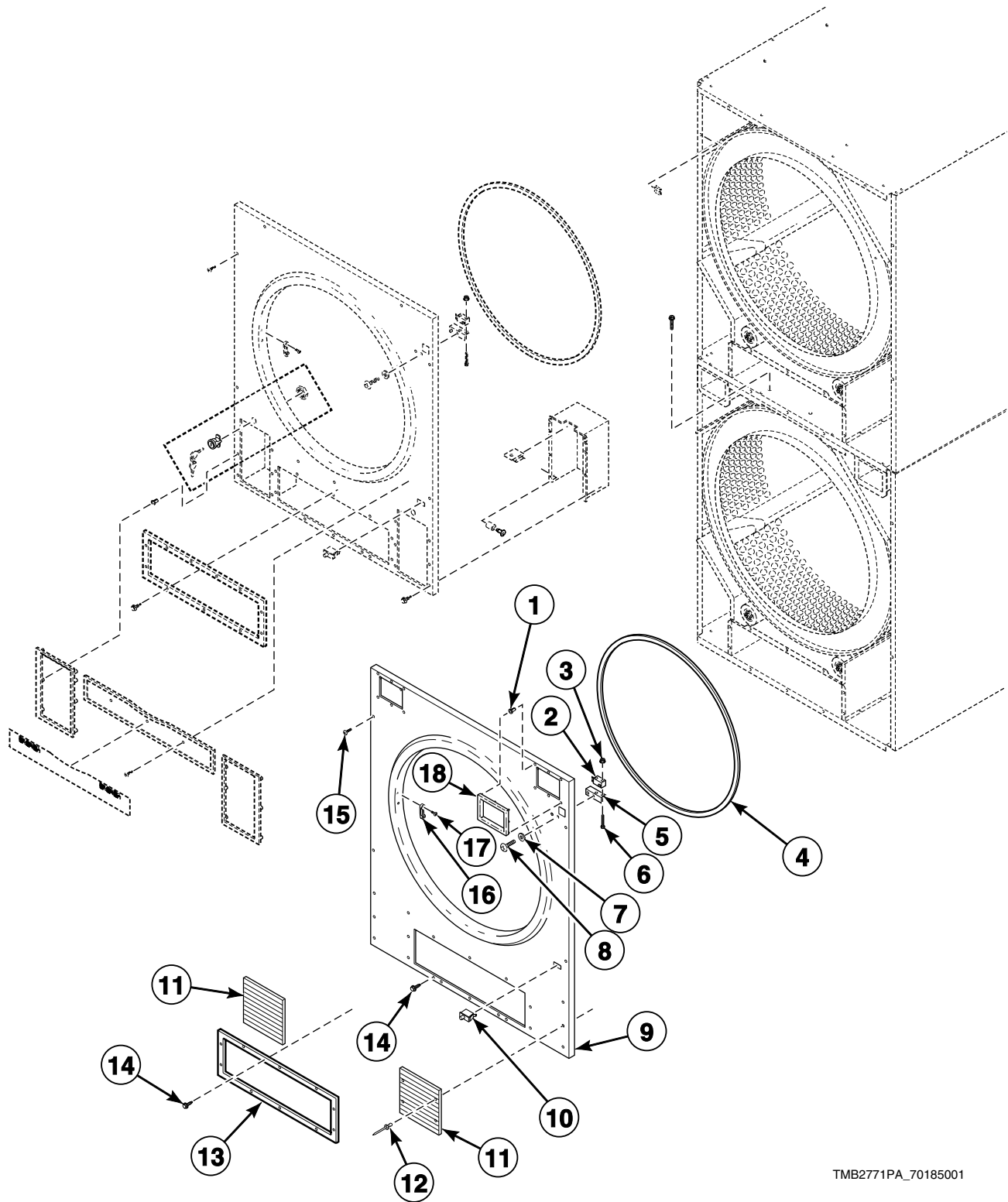
Upper Front Panel Components



TMB2771P_70185001

ST4 P11

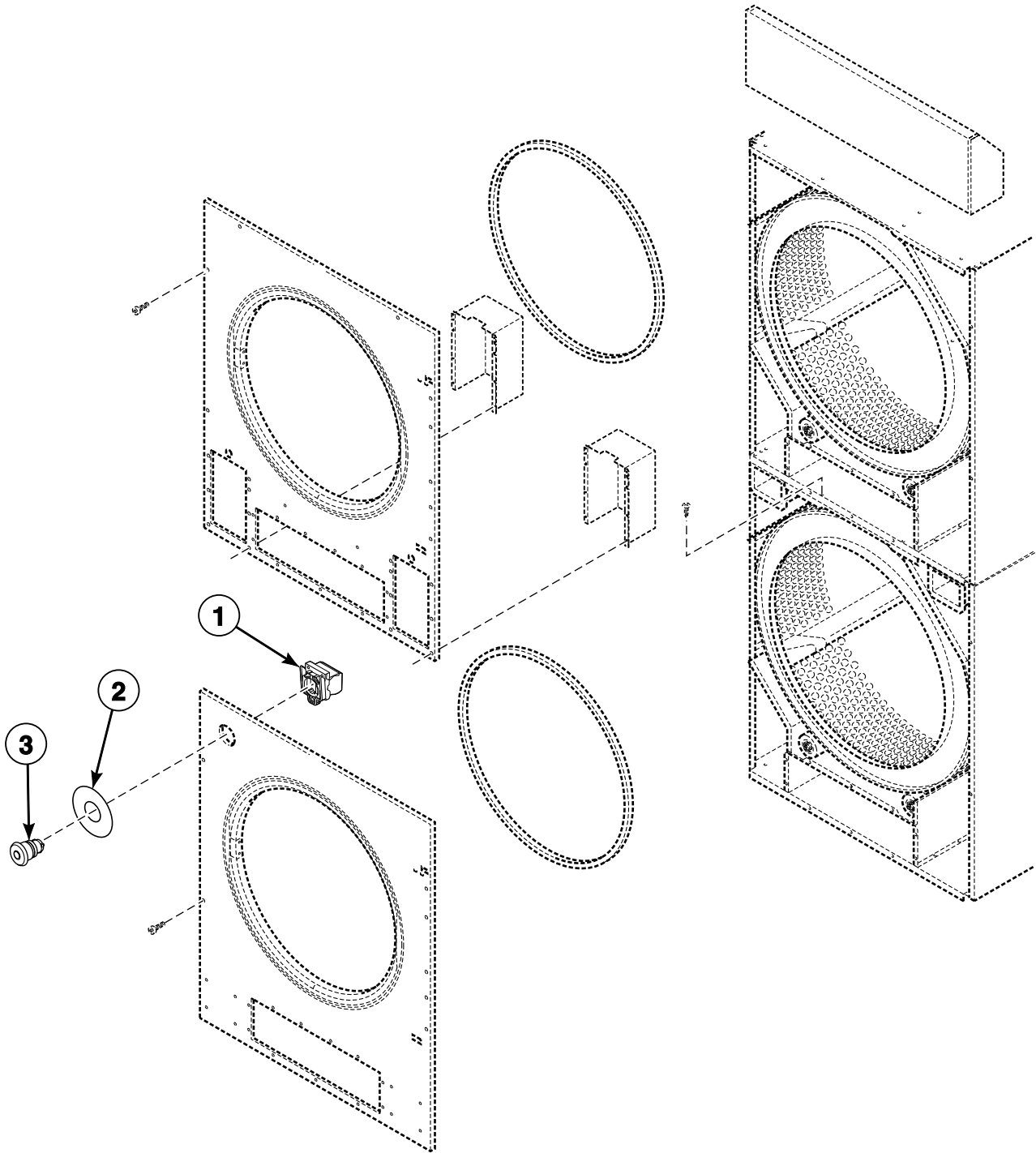
Lower Front Panel Components



TMB2771PA_70185001

ST4 P12

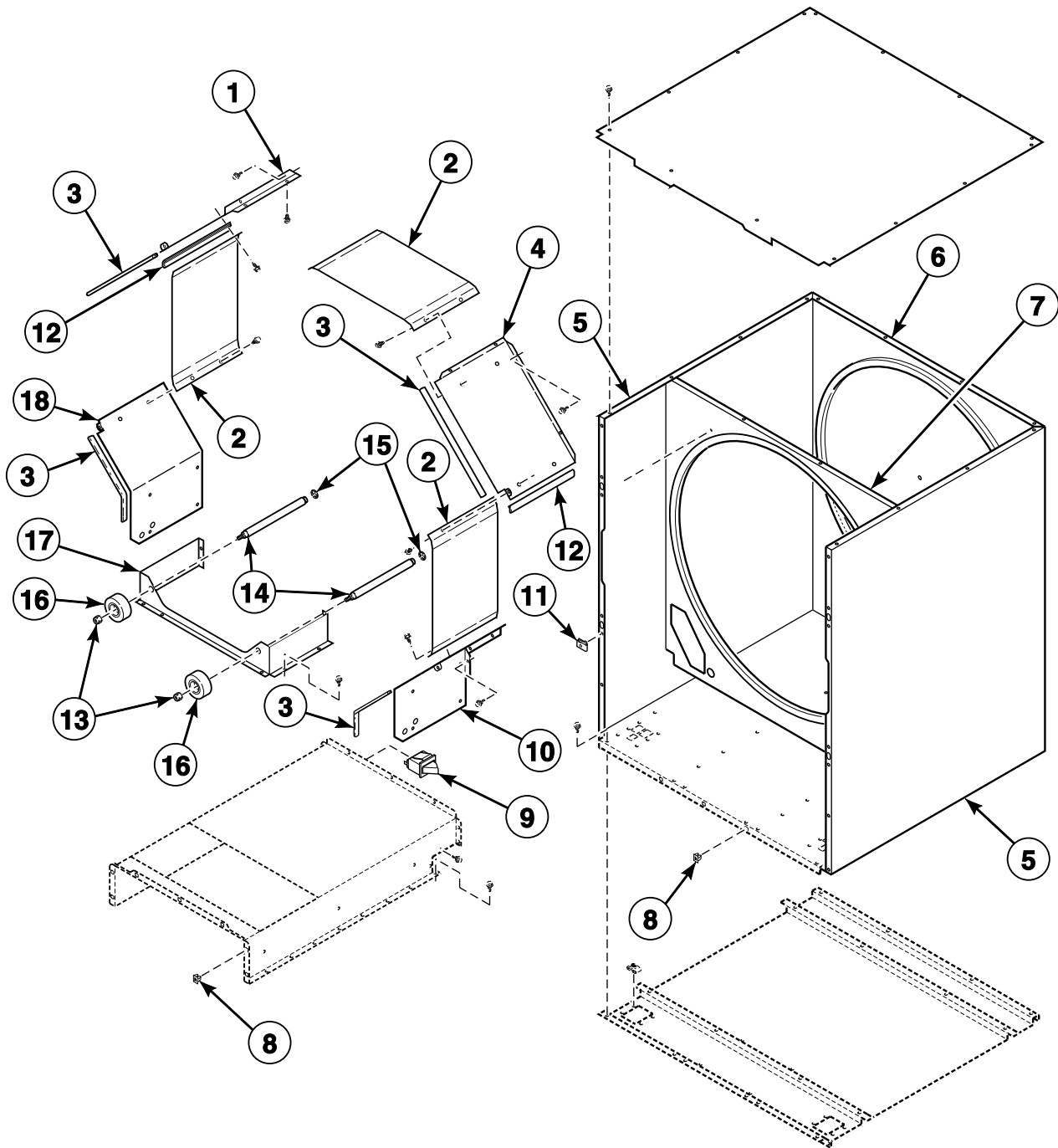
Emergency Stop Button for CE Models



TMB2347P_70185001

ST4 P13

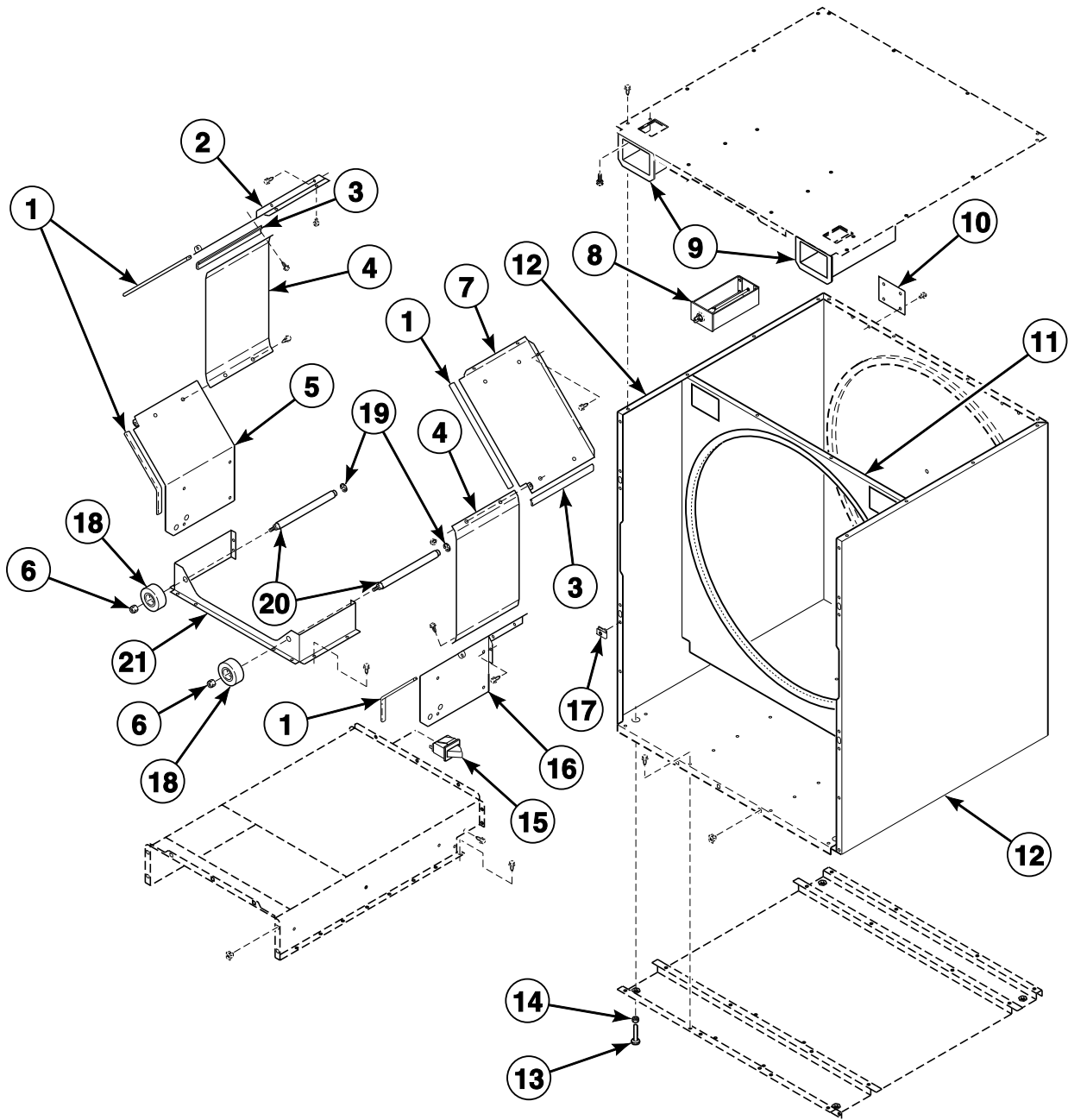
Upper Cylinder Support Components



TMB2833P_70185001

ST4 P14

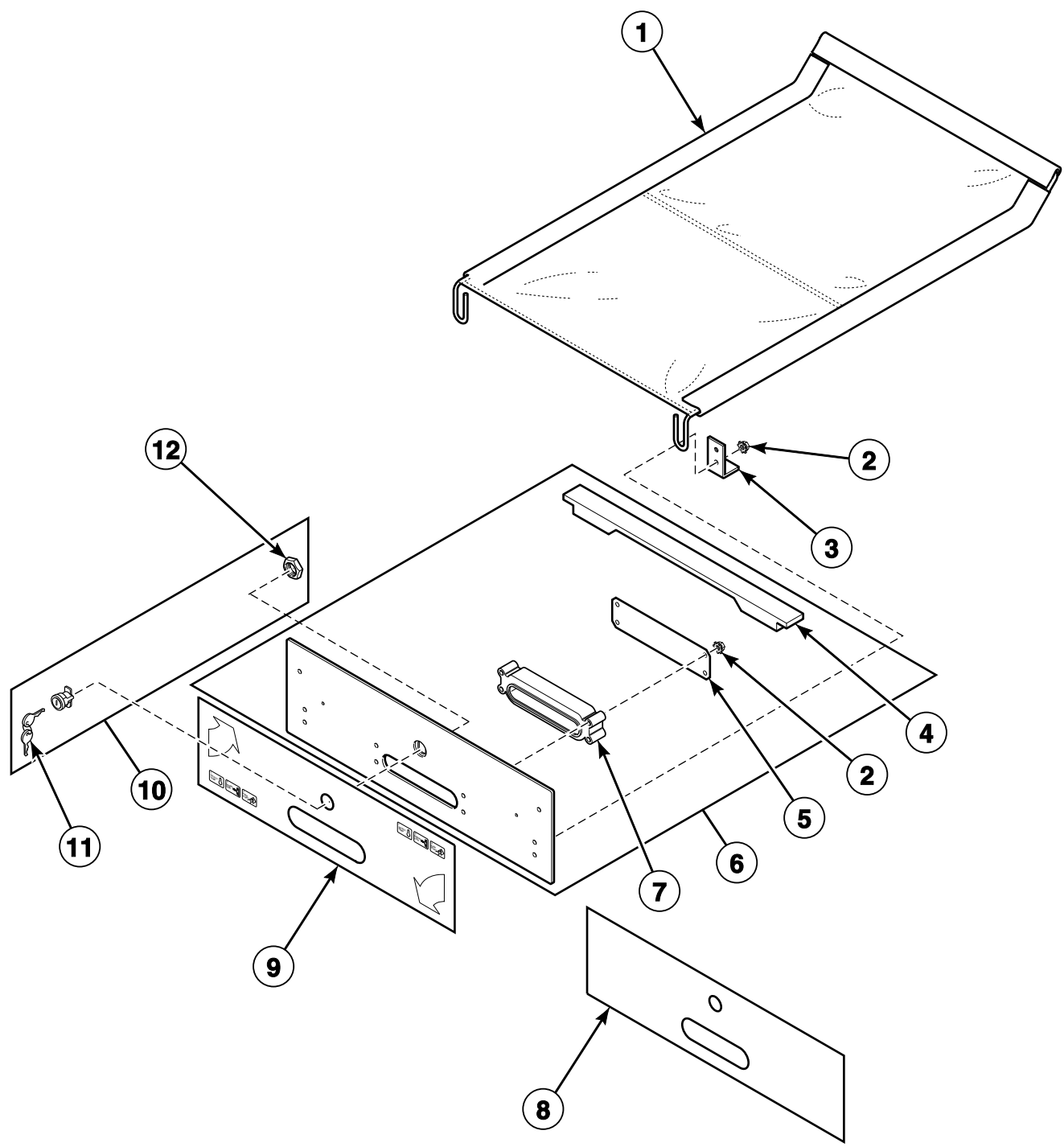
Lower Cylinder Support Components



T435PZ3B_70185001

ST4 P15

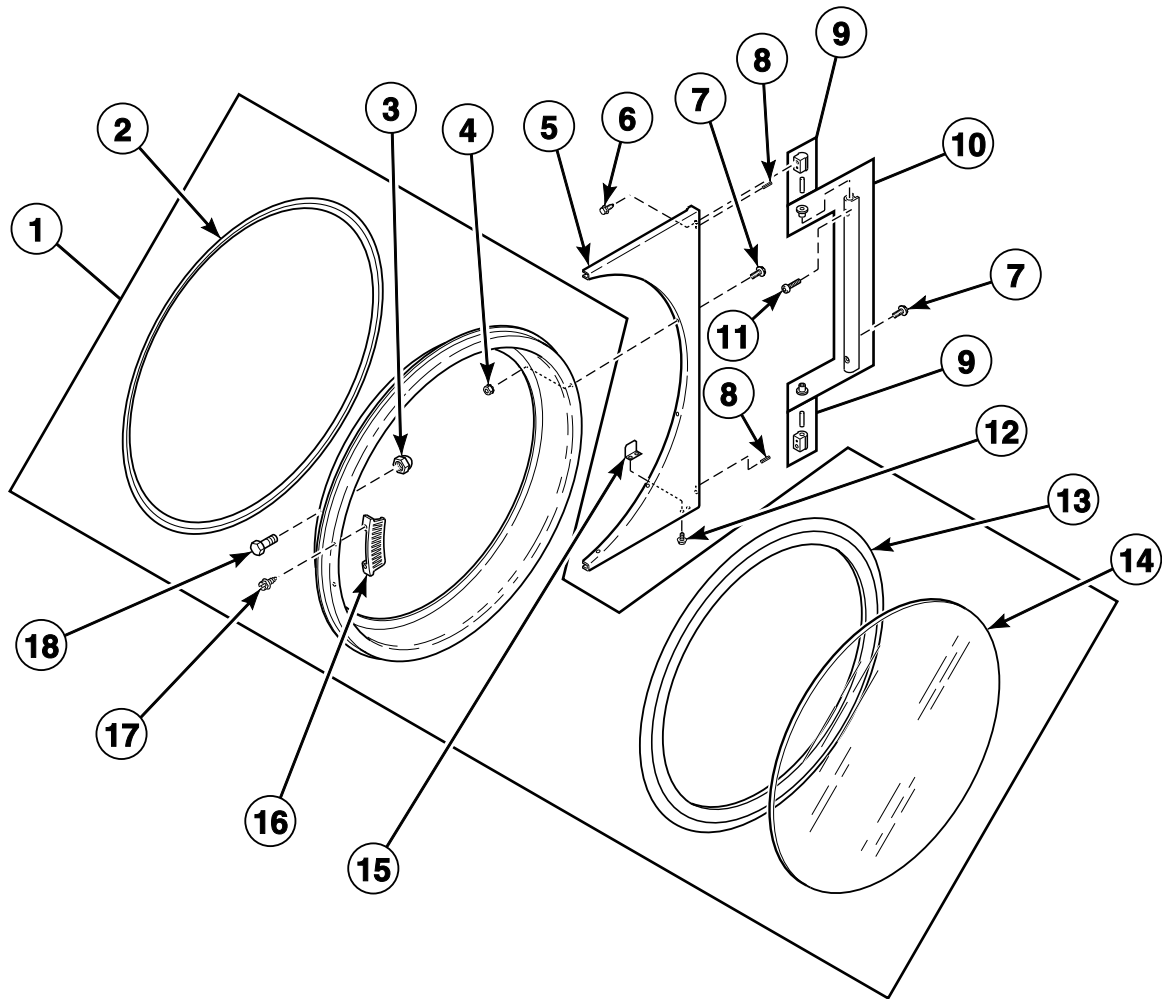
Lint Drawer Components



TMB2640P_70185001

ST4 P16

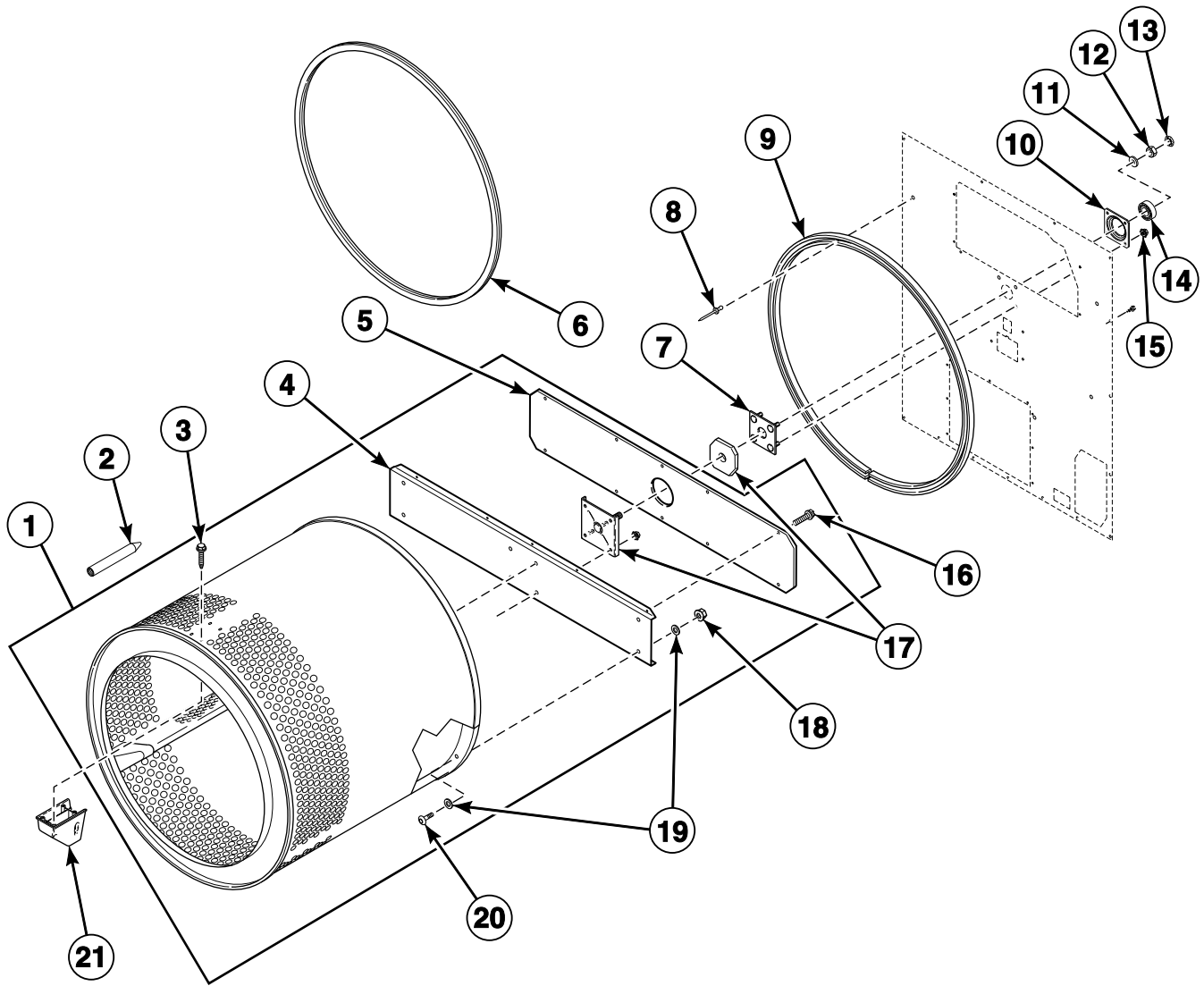
Door and Hinge Components



TMB2597P_70185001

ST4 P17

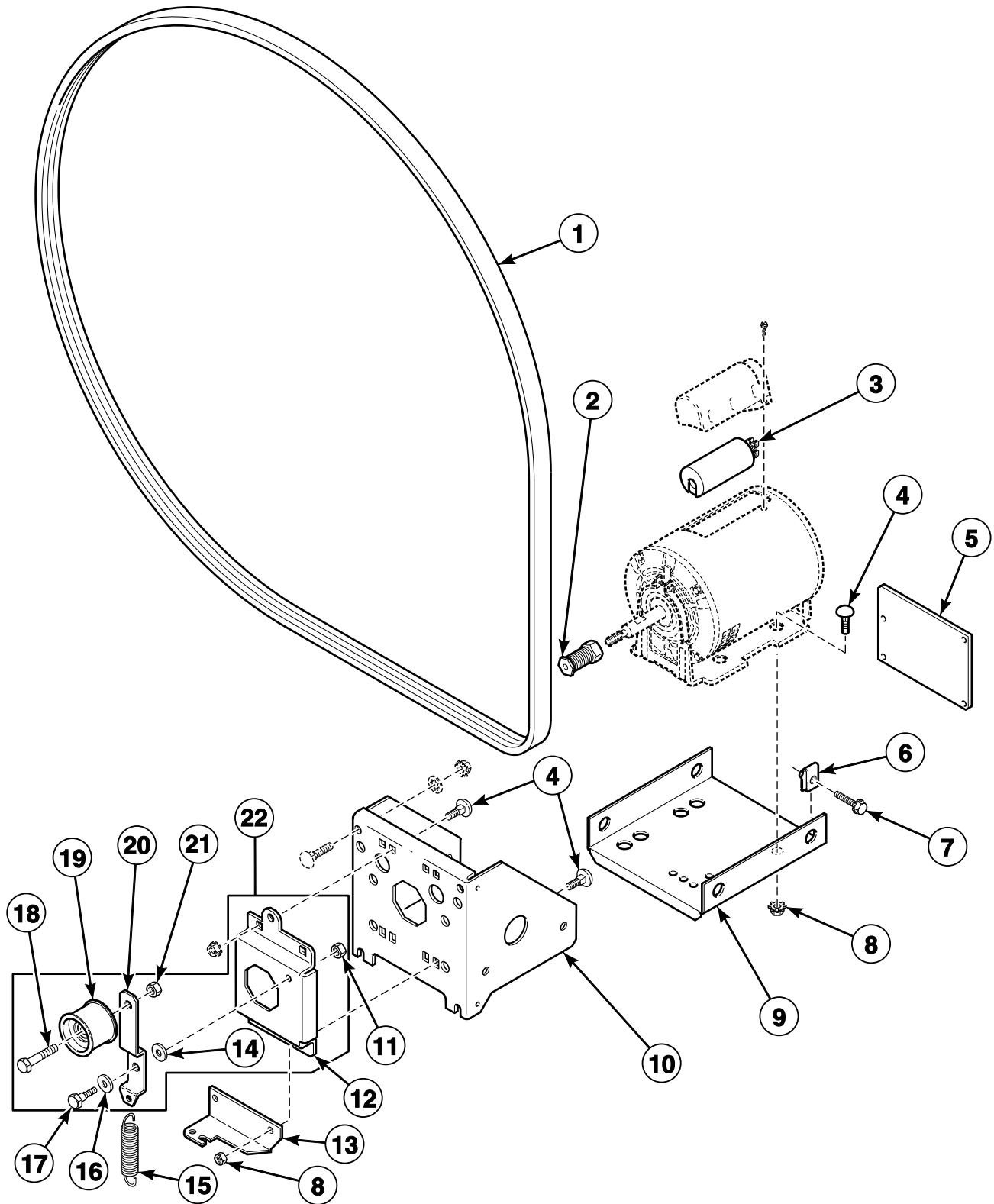
Cylinder Components



TMB2772P_70185001

ST4 P18

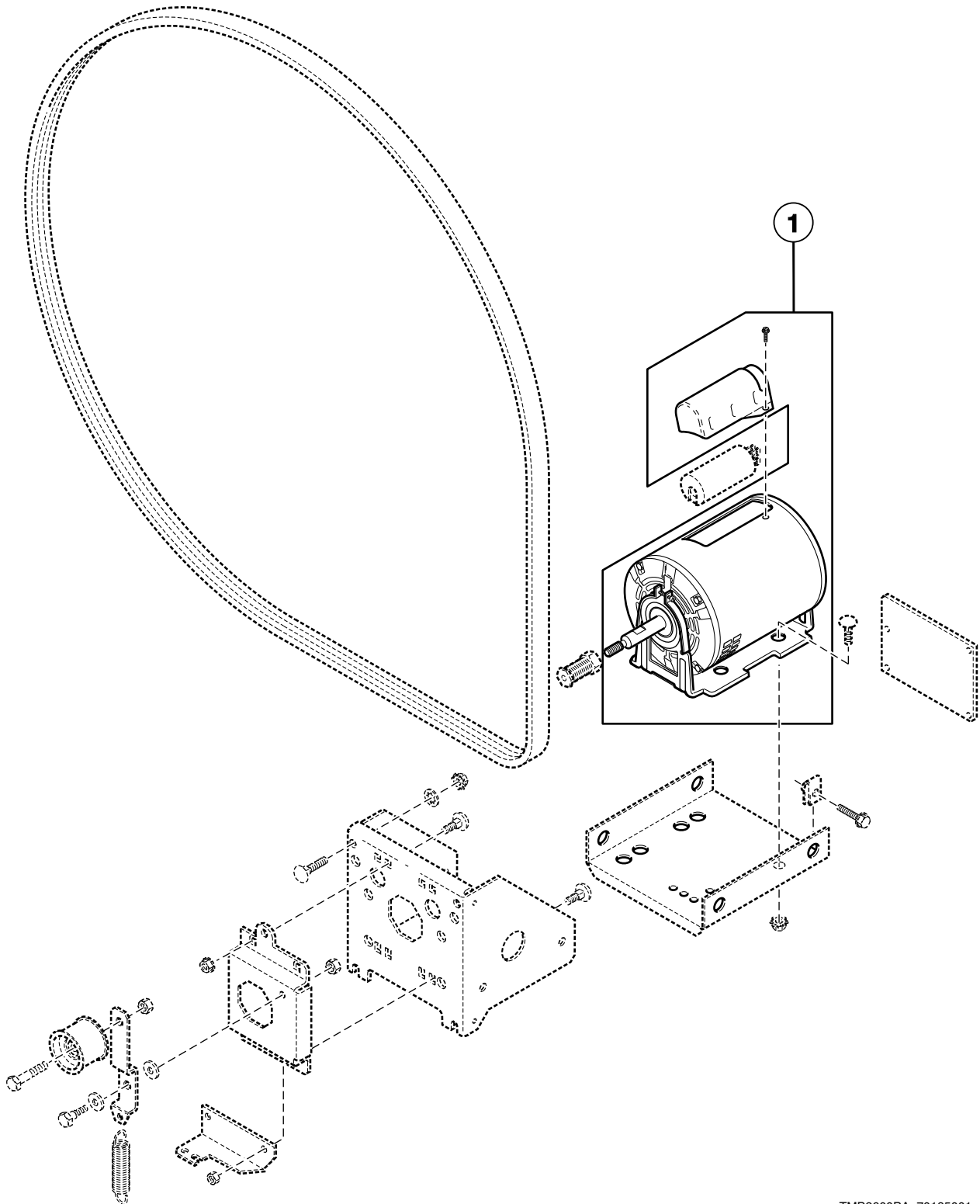
Drive Motor Components



TMB2600P_70185001

ST4 P19

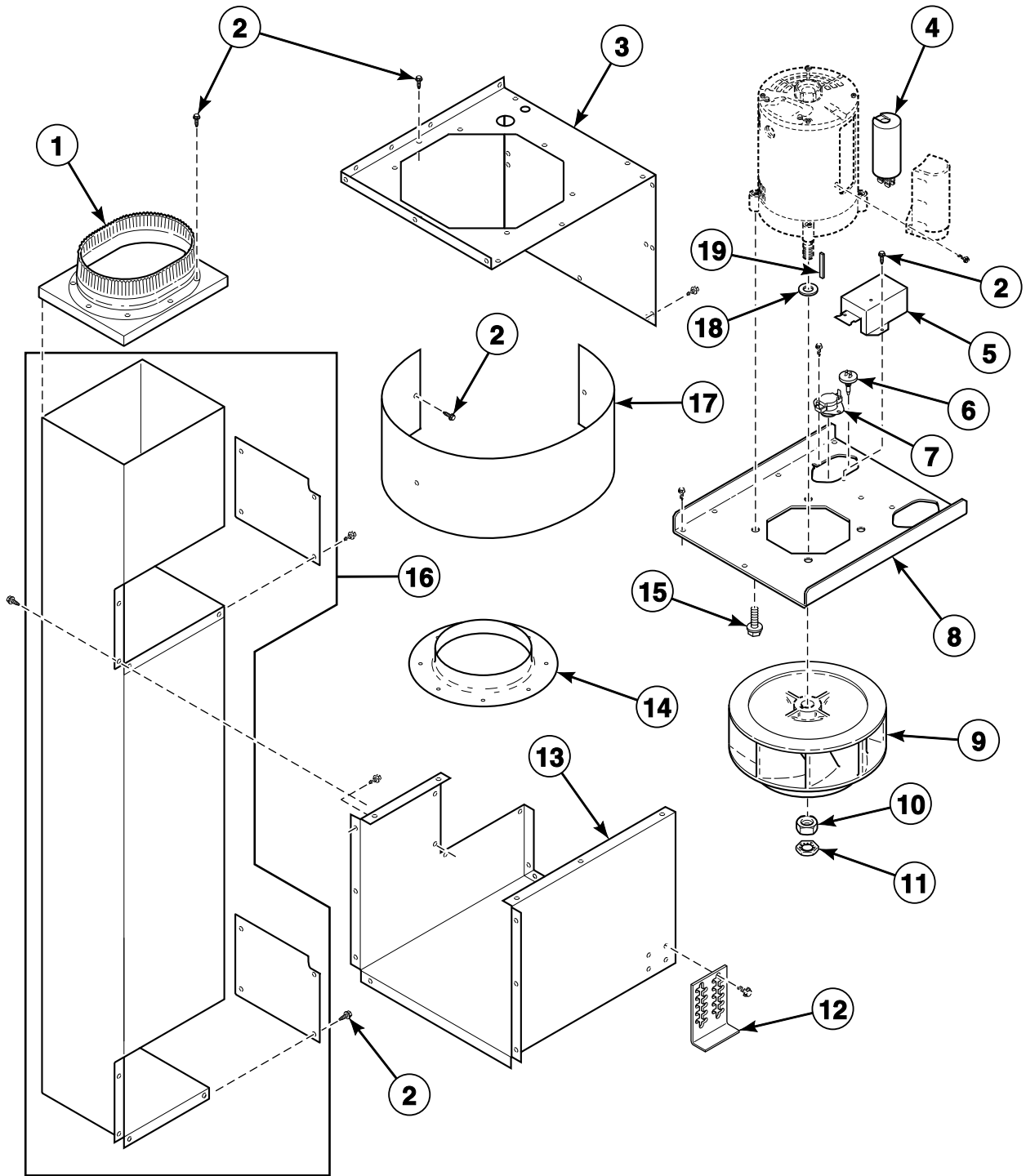
Drive Motors



TMB2600PA_70185001

ST4 P20

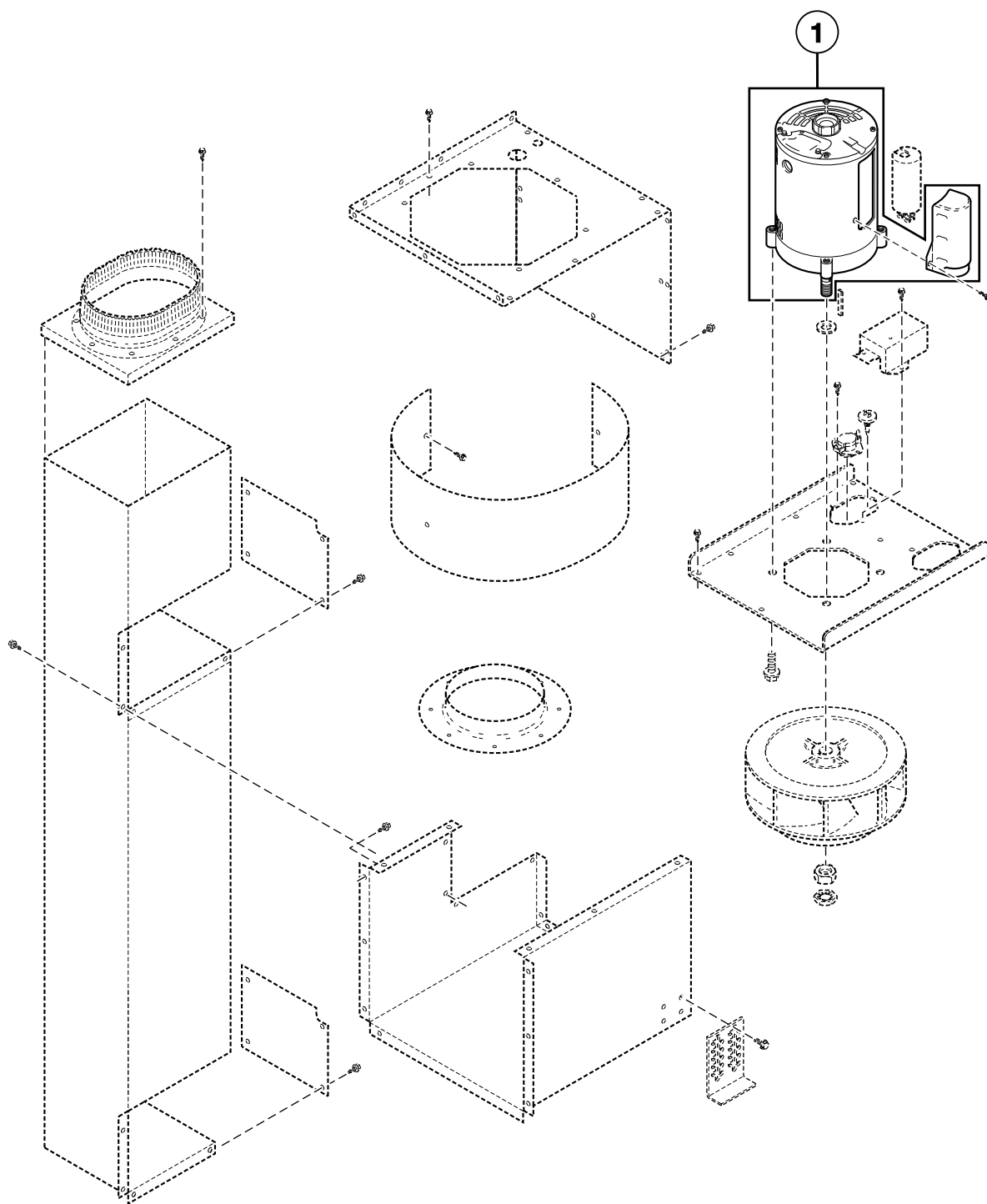
Blower and Exhaust Components



TMB2601P_70185001

ST4 P21

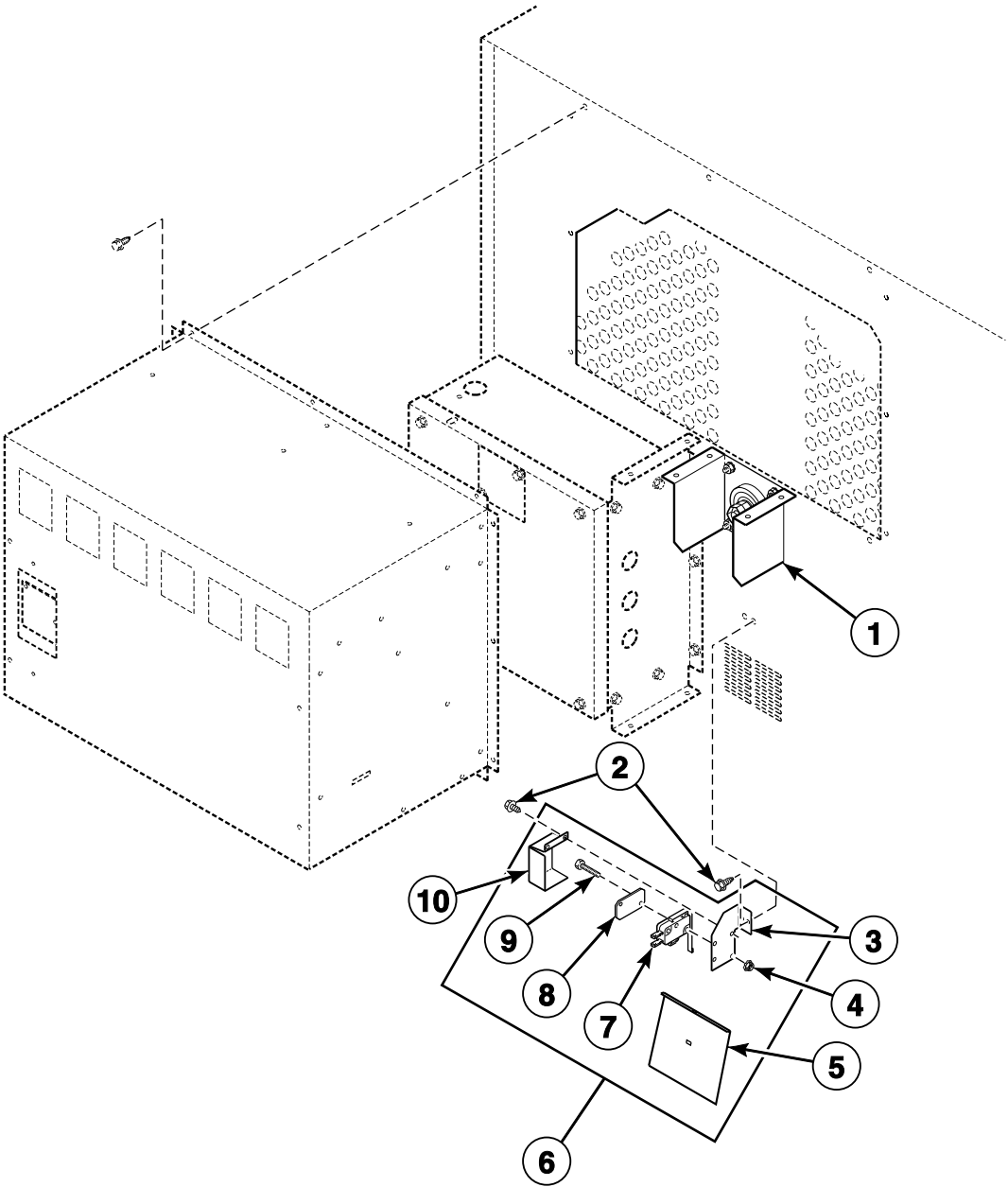
Blower Motors



TMB2601PA_70185001

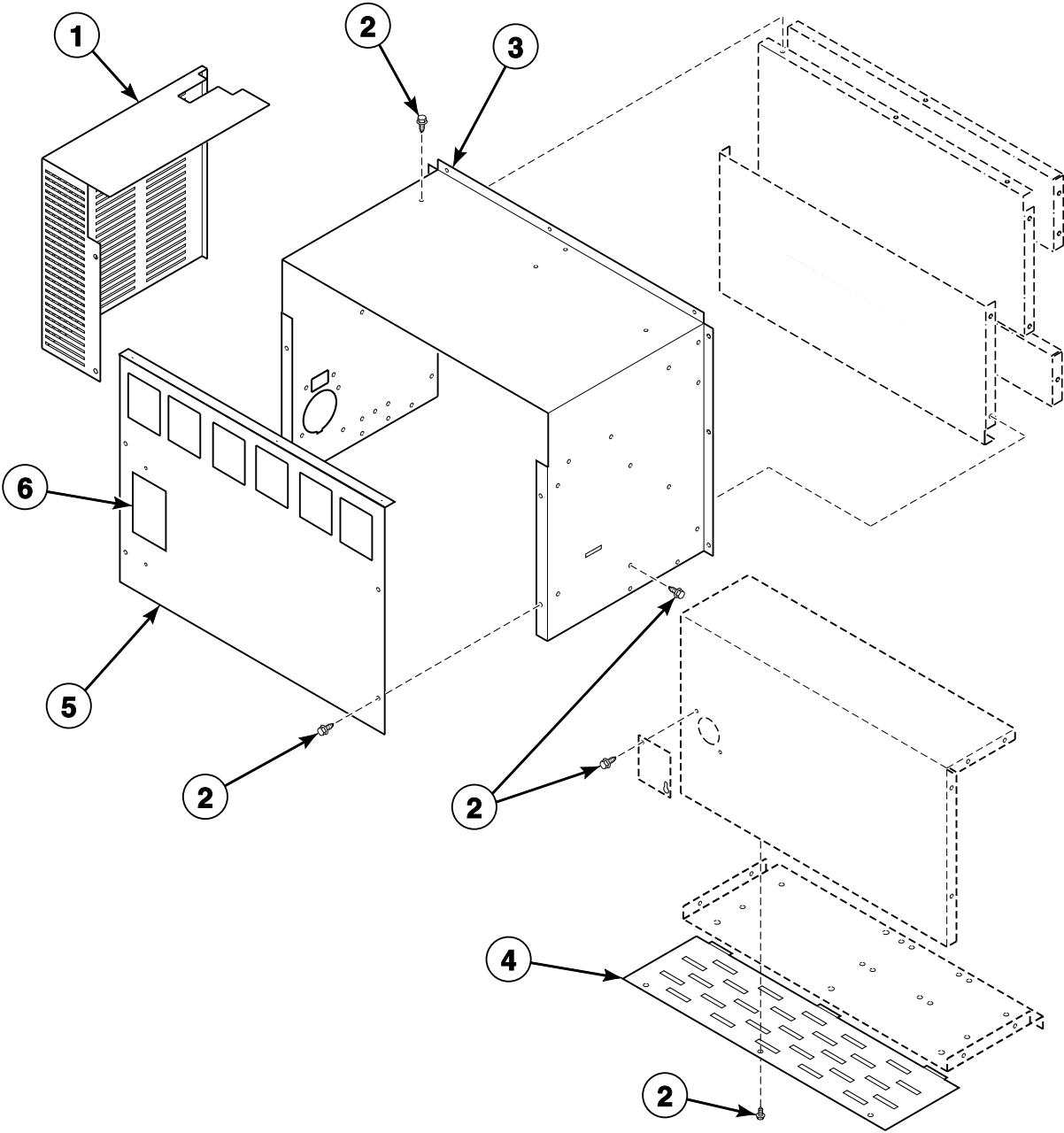
ST4 P22

Airflow Switch Components



TMB2976P_70185001

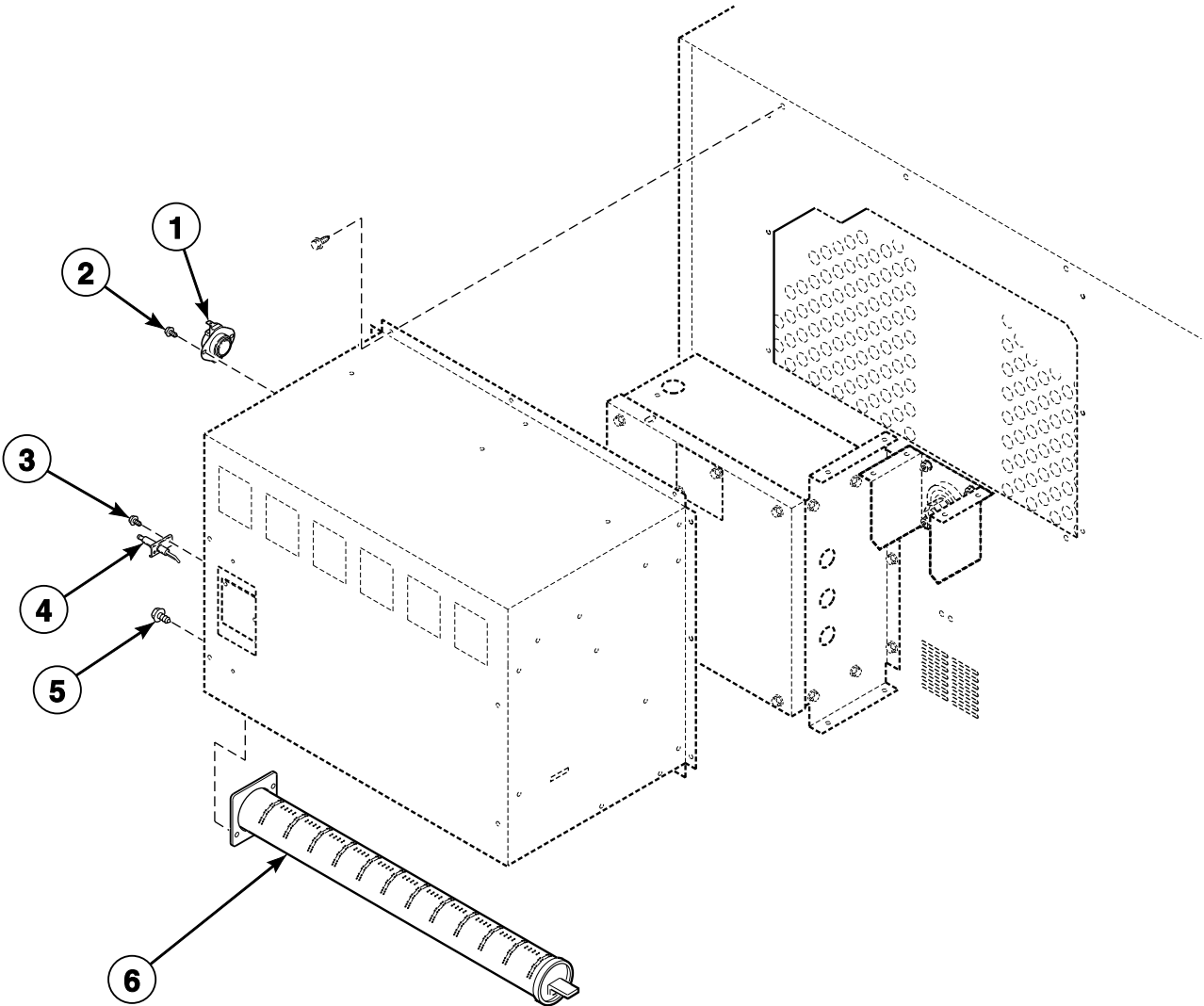
Gas Burner Housing



T465P_70185001

ST4 P24

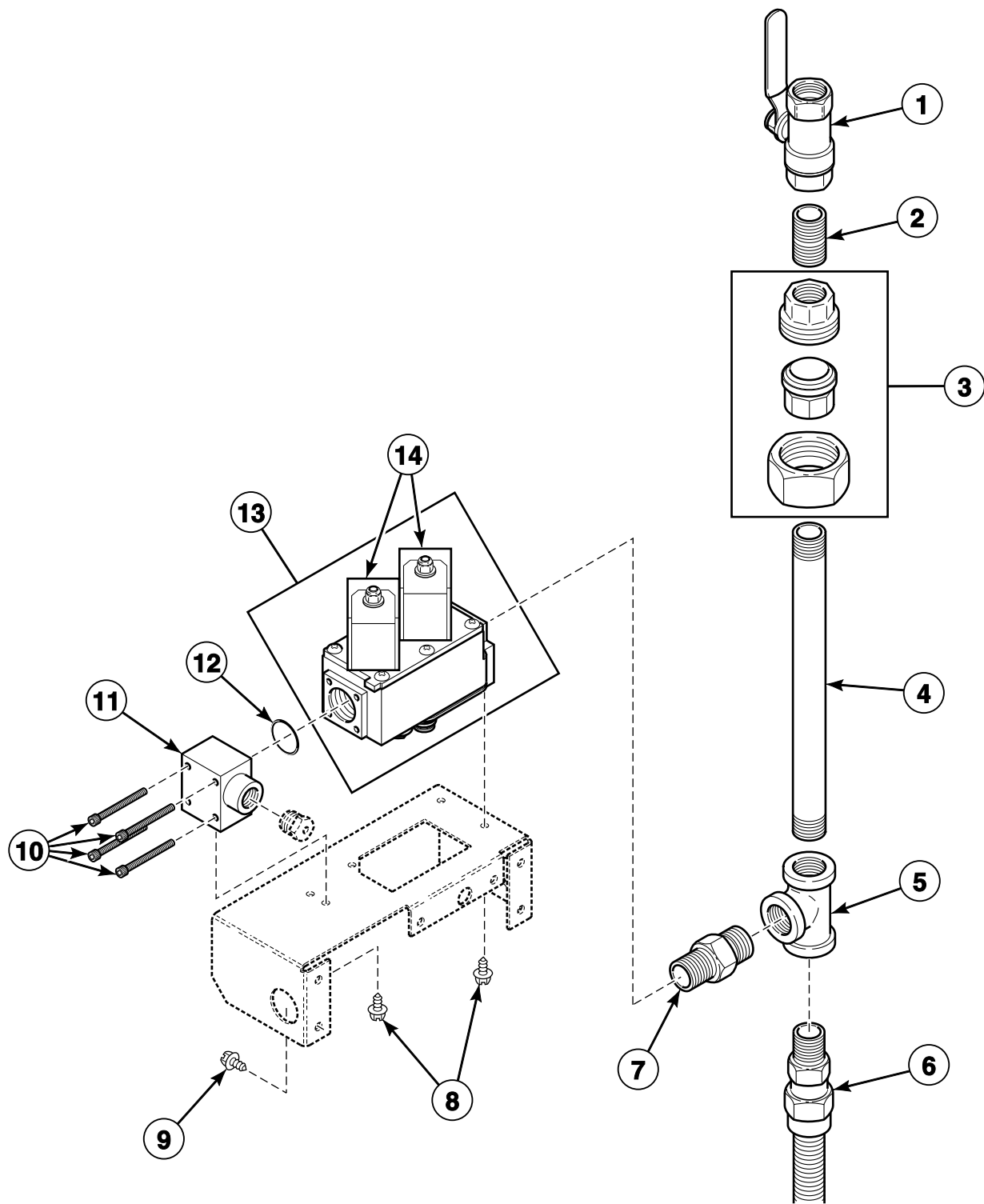
Gas Burner Components



TMB2975P_70185001

ST4 P25

Gas Valve and Piping

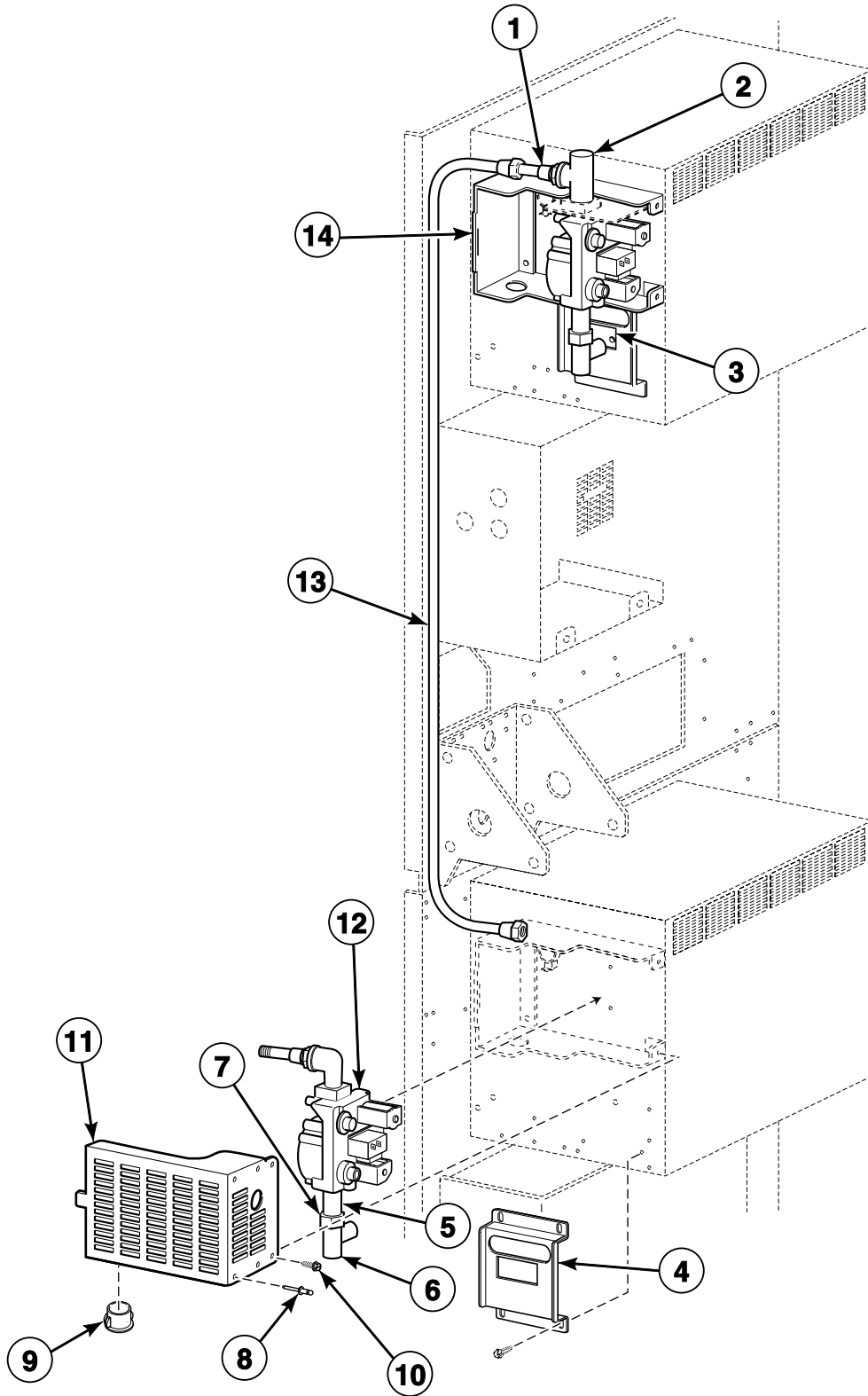


TMB2603P_70185001

ST4 P26

Gas Valve Assembly

Models Starting Serial No. 0209009567

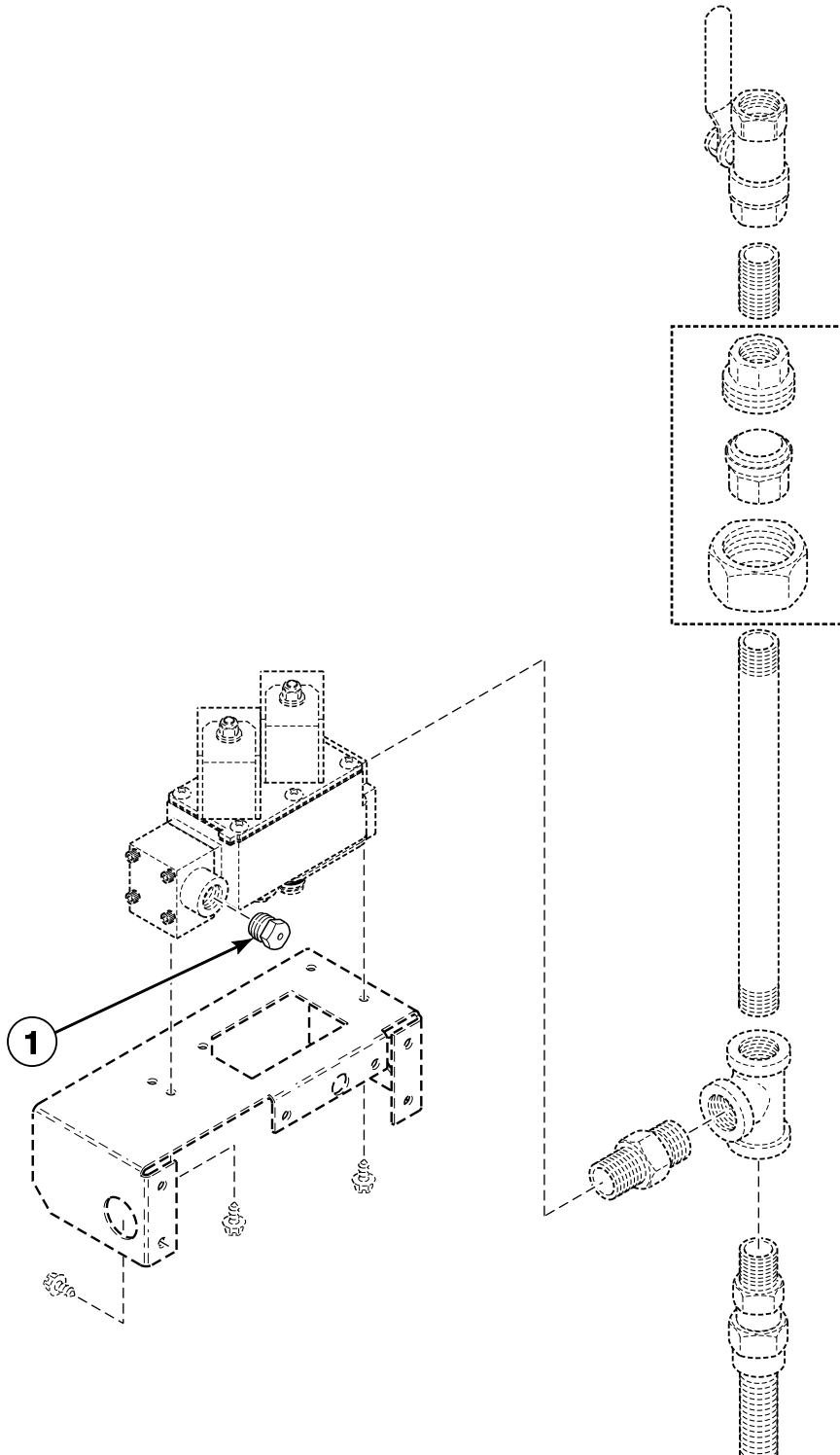


TMB2027P_70185001

ST4 P27

Burner Orifices

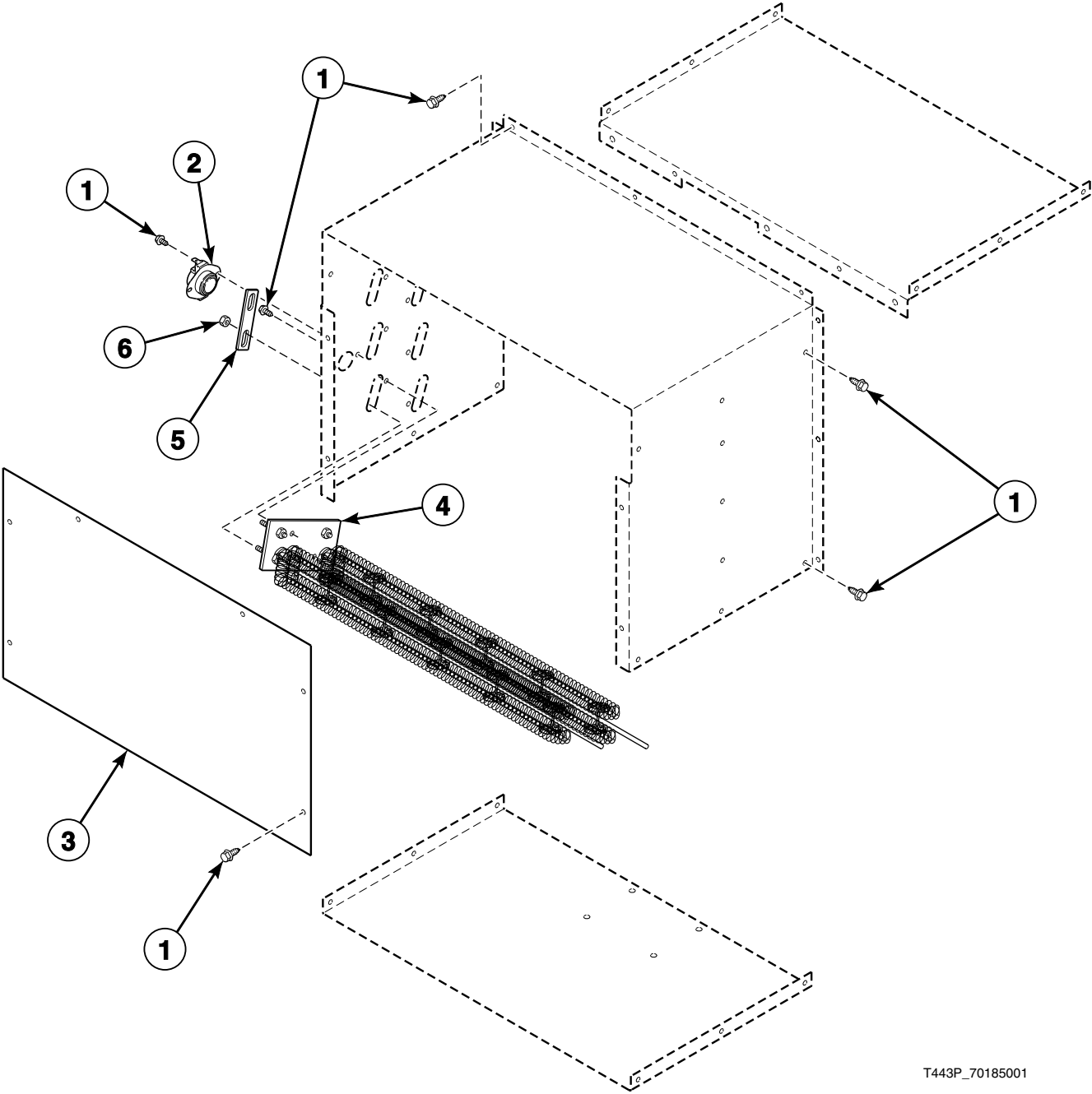
FG and RG Models



TMB1999PA_70185001

ST4 P28

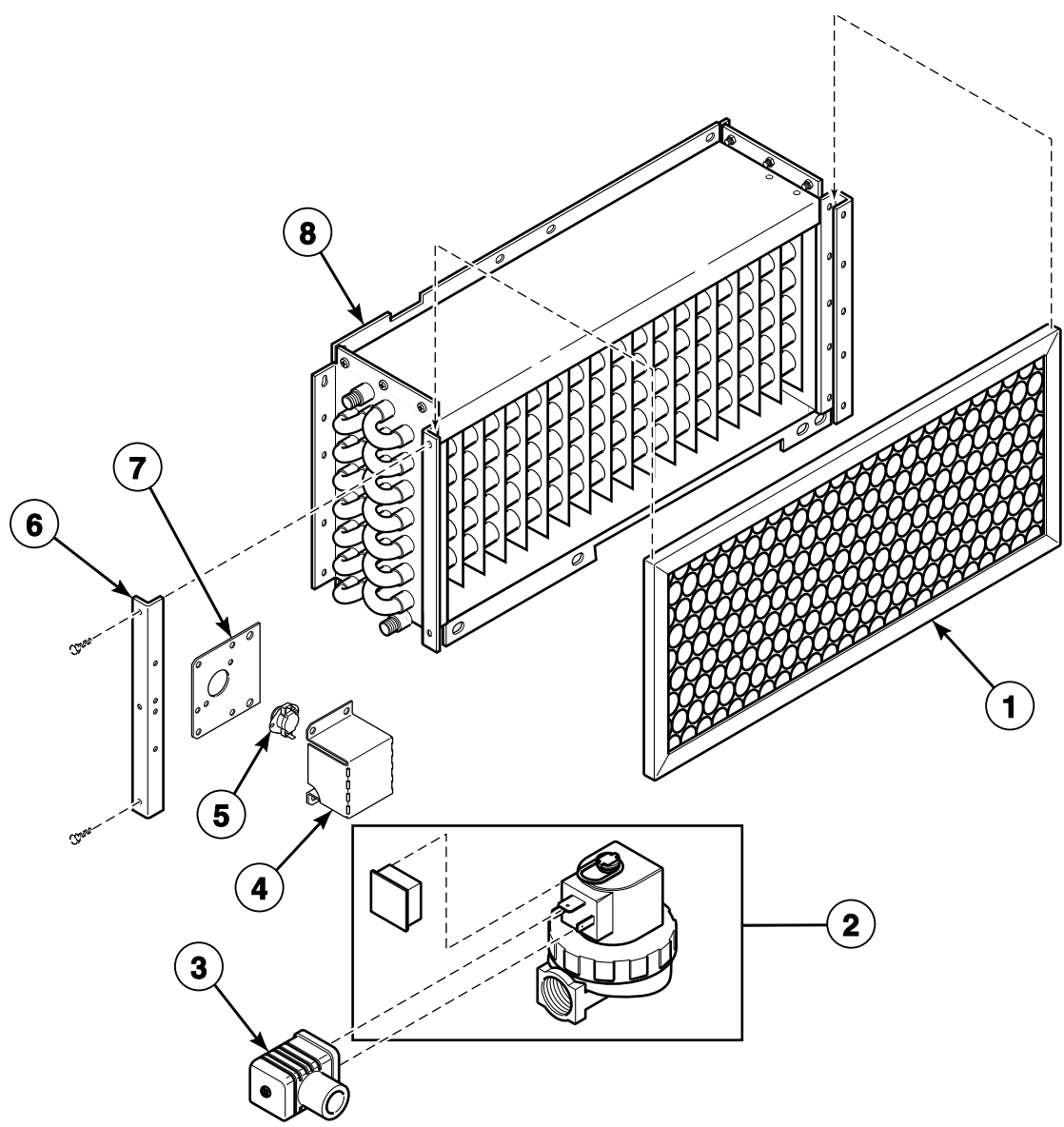
Electric Heater Components



T443P_70185001

ST4 P29

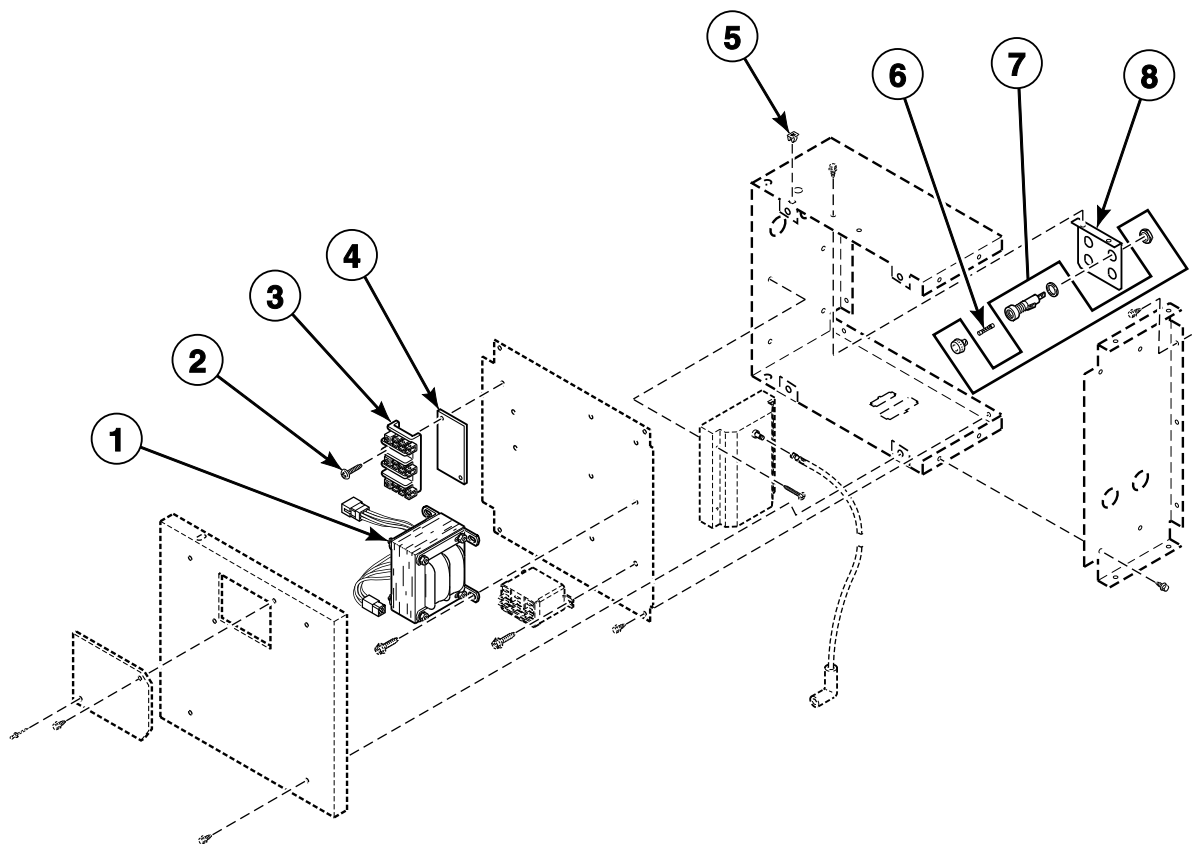
Steam Heater Components



TMB2604P_70185001

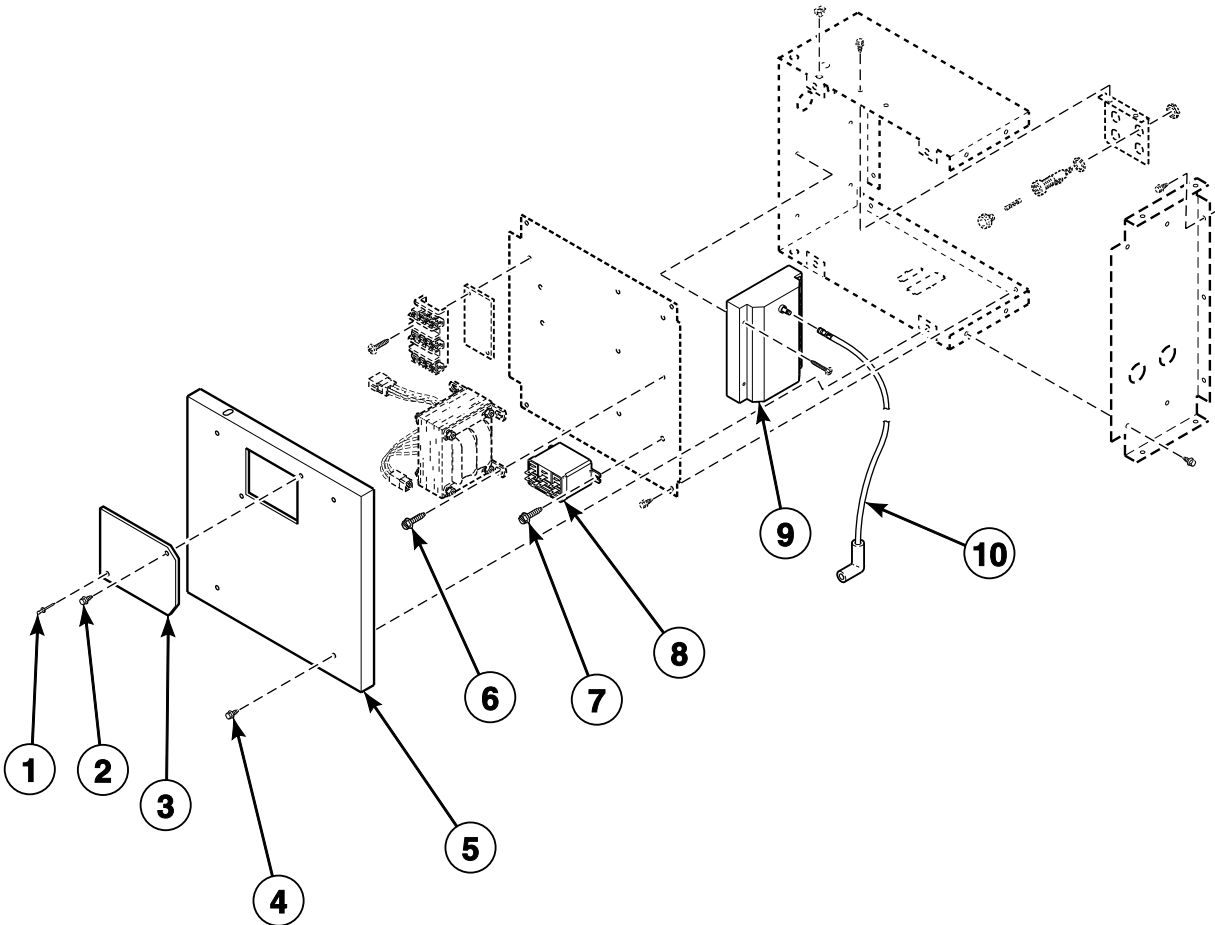
ST4 P30

Rear Control Box - Gas Non-CE Models (Drawing 1 of 2)



TMB2369P_70185001

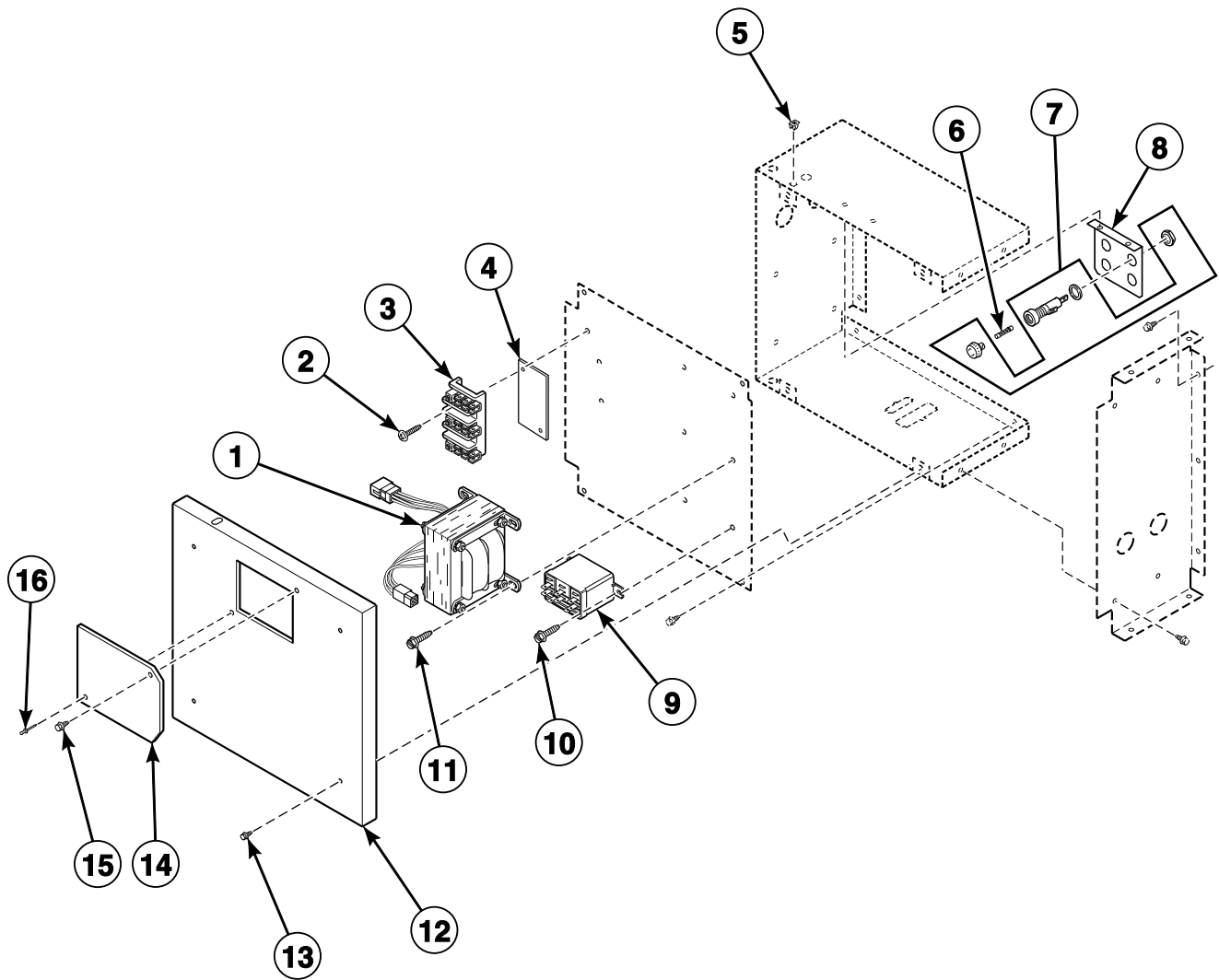
Rear Control Box - Gas Non-CE Models (Drawing 2 of 2)



TMB2369PA_70185001

ST4 P32

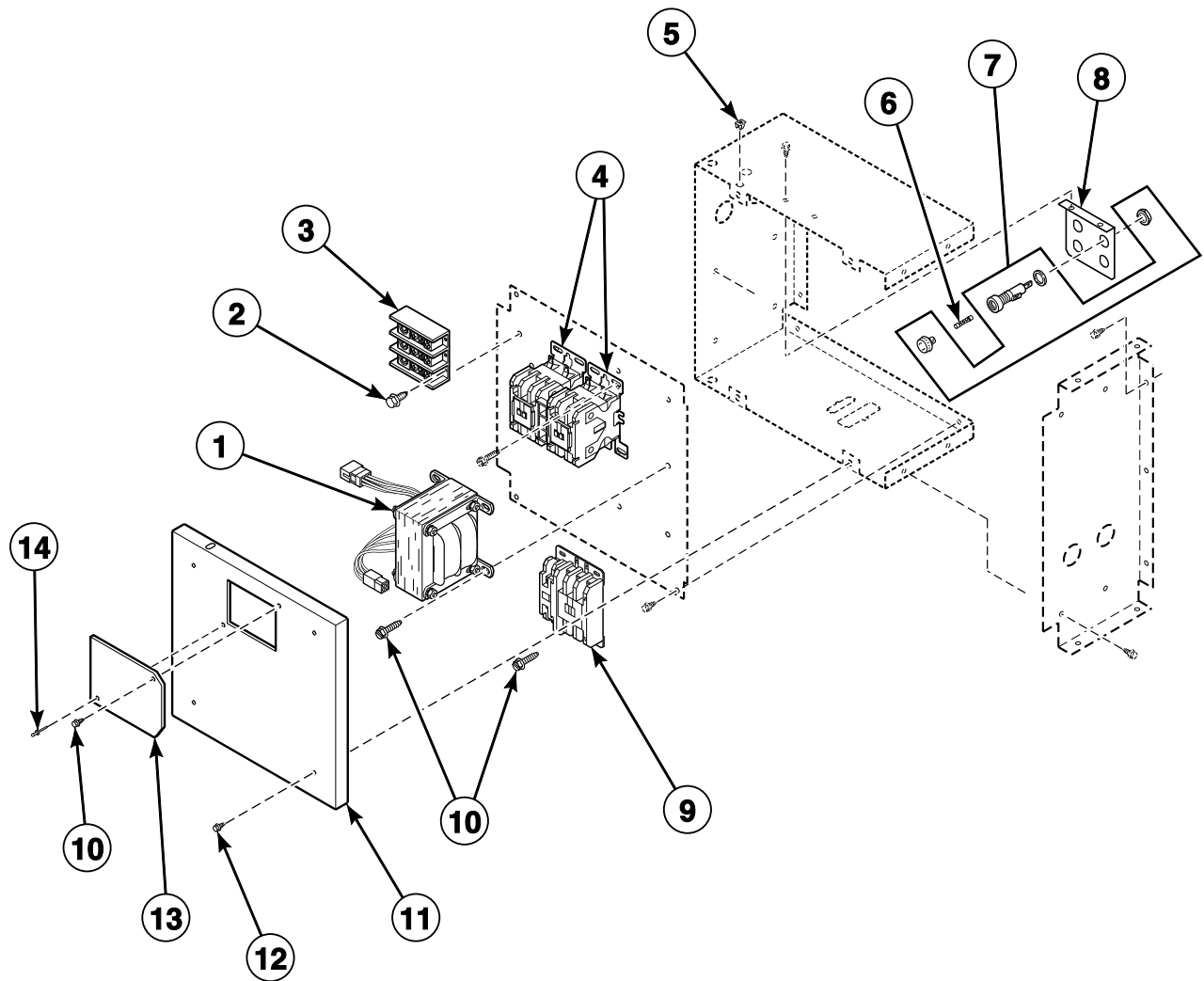
Rear Control Box - Steam Non-CE Models



TMB2370P_70185001

ST4 P33

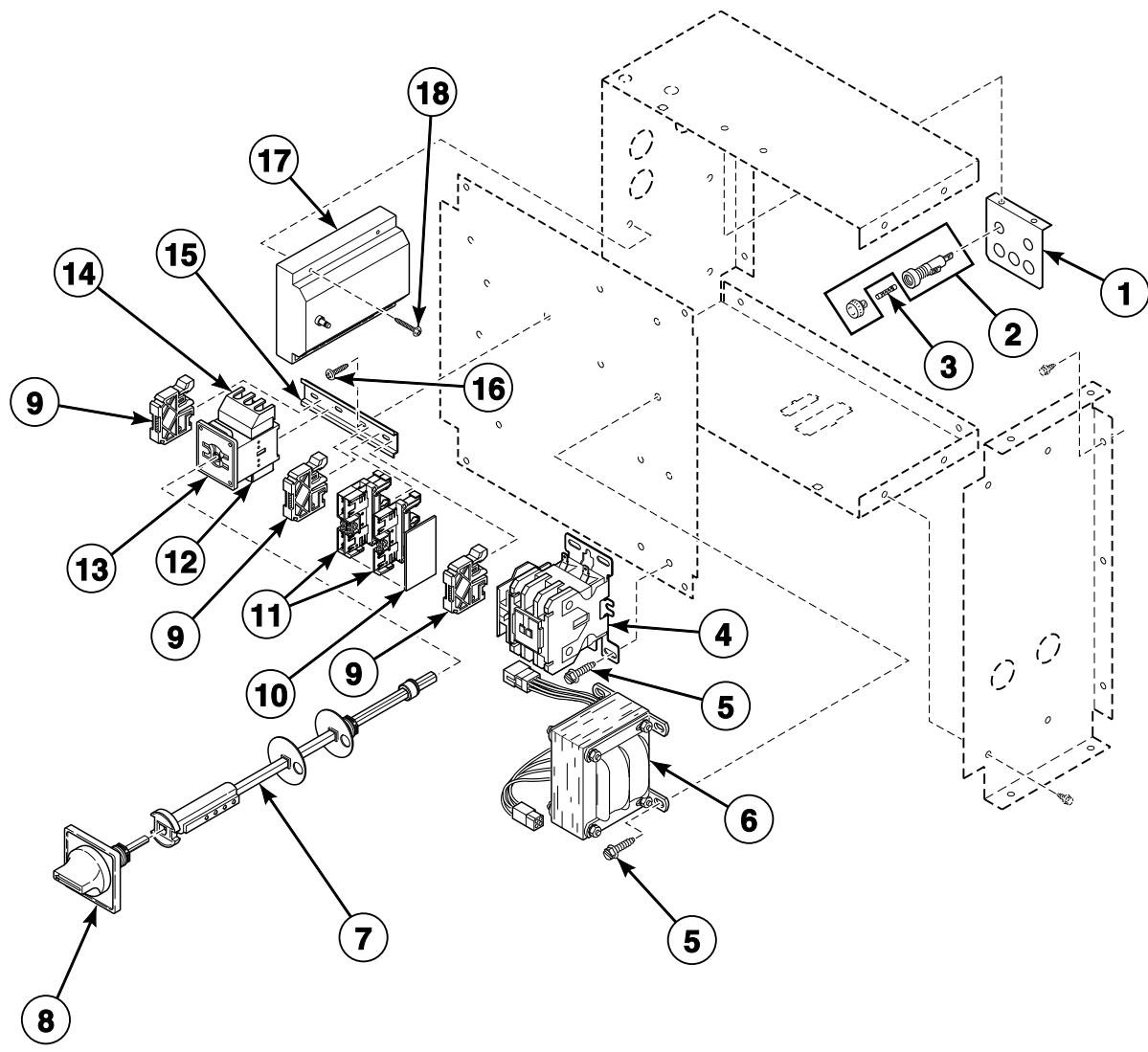
Rear Control Box - Electric Non-CE Models



TMB2371P_70185001

ST4 P34

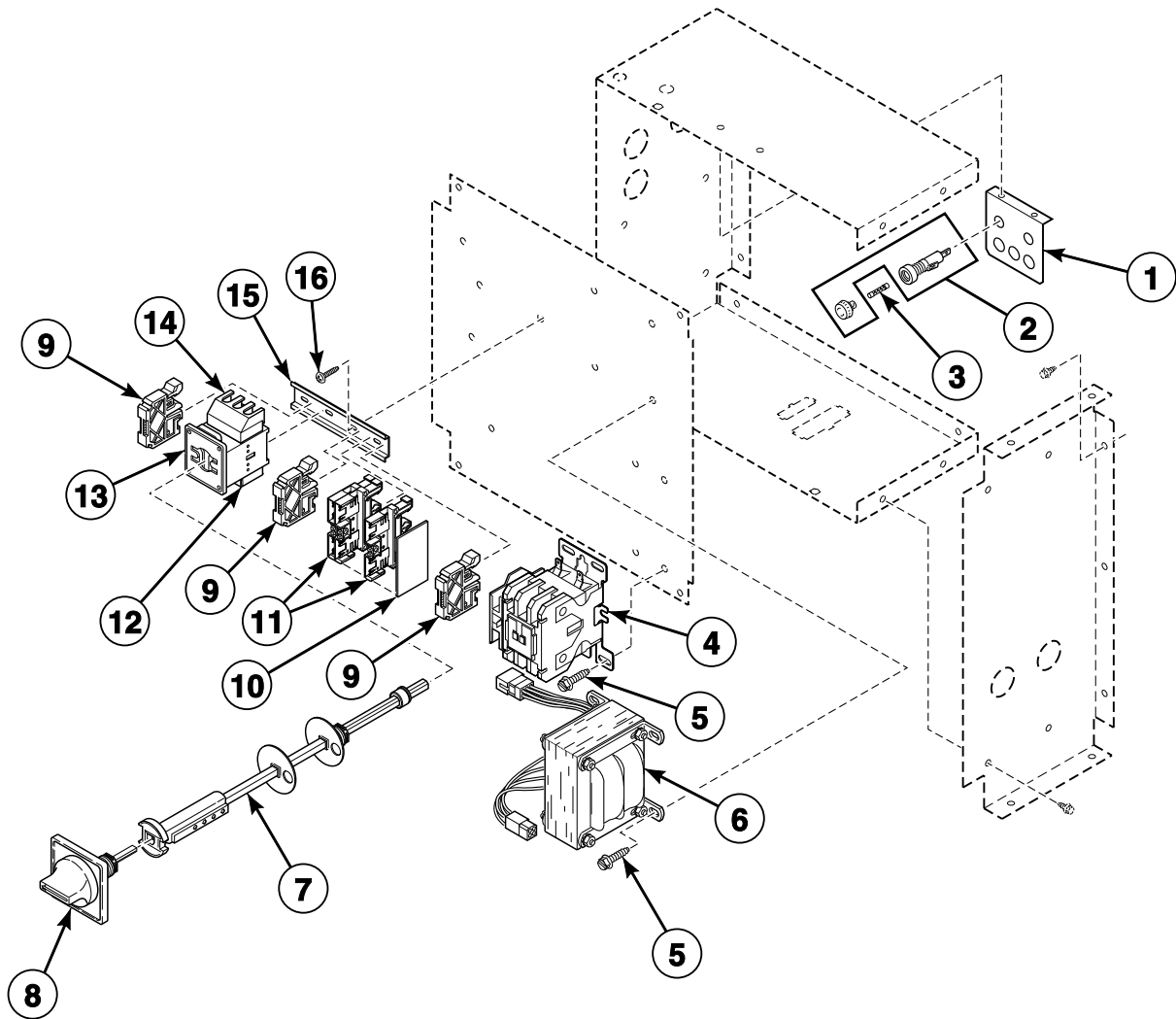
Rear Control Box - Gas CE Models



TMB2001P_70185001

ST4 P35

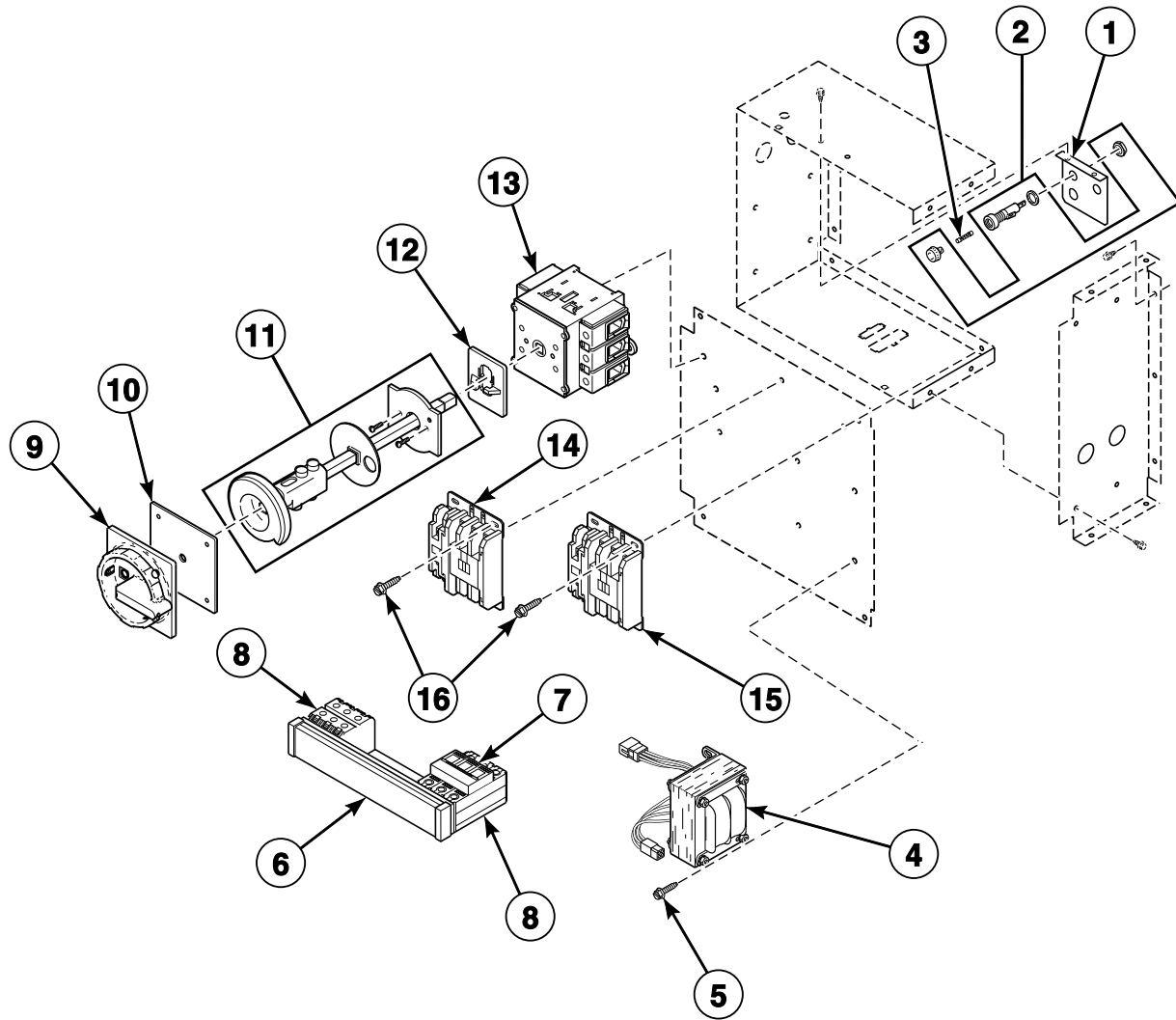
Rear Control Box - Steam CE Models



TMB2002P_70185001

ST4 P36

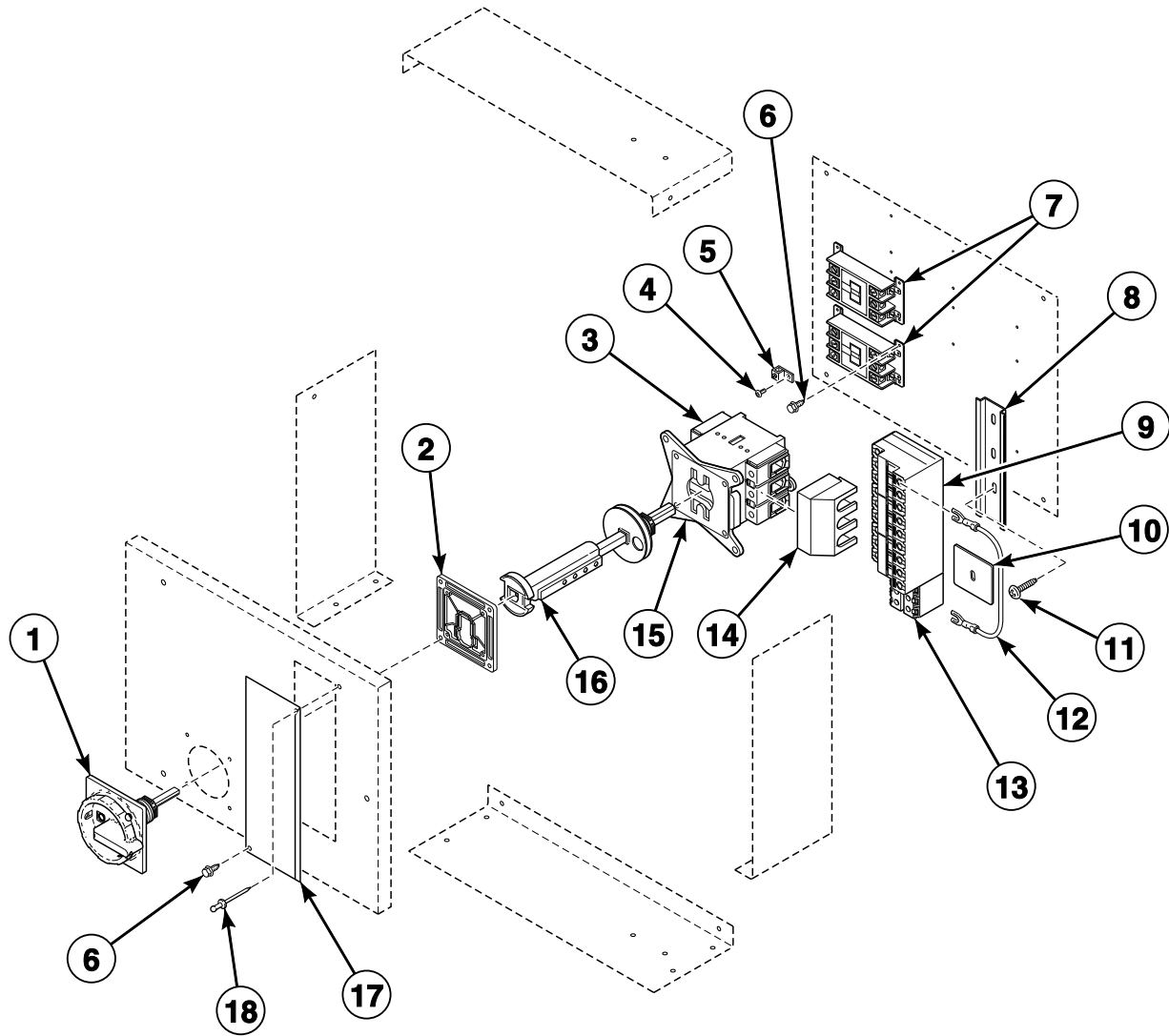
Rear Control Box - Electric CE Models Through Serial No. 112006347



TMB2003P_70185001

ST4 P37

Rear Control Box - Electric CE Models Starting Serial No. 112006348



TMB1858P_70185001

ST4 P38