

# Drying Tumblers

Stacked 30 Pound Capacity **STD2**

Models Starting Serial No. DTCK9401011756

Refer to Page 3 for Model Numbers

Parts



[www.LAVERAP.com](http://www.LAVERAP.com)

Part No. M412907R9  
September 2011

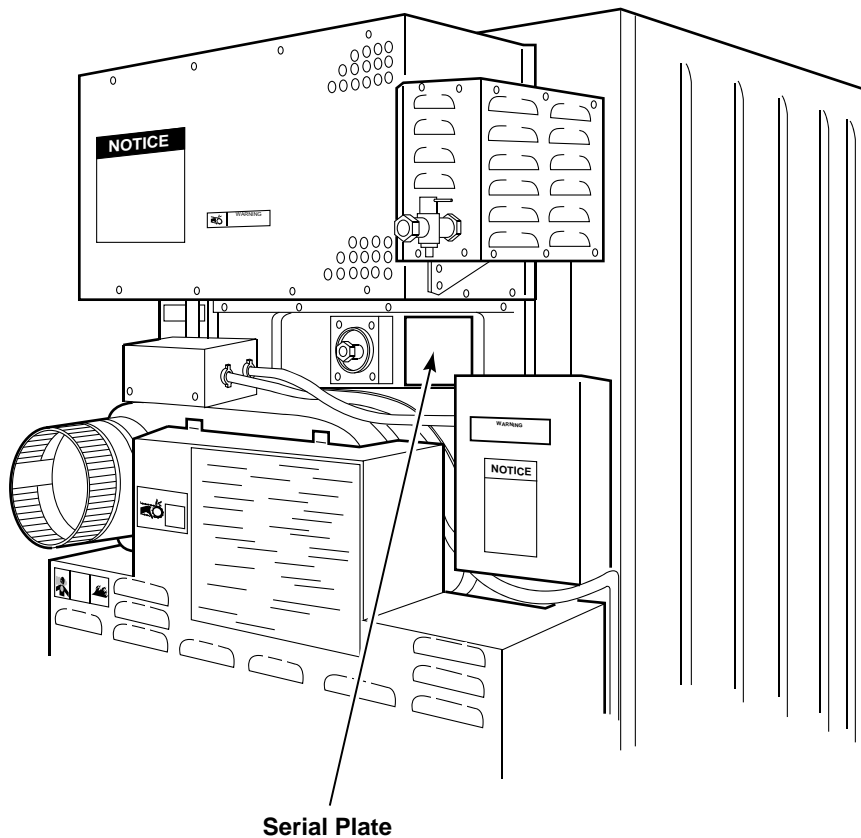
## Parts Ordering Information

If literature or replacement parts are required, contact the source from whom the machine was purchased or contact Alliance Laundry Systems at for the name and address of the nearest authorized parts distributor.

For technical assistance, call either of the numbers listed below:

## Serial Plate Location

When calling or writing about your product, be sure to mention model and serial numbers. Model and serial numbers are located on serial plate(s) as shown.



T278P\_M412907

## Model Identification

Information in this manual is applicable to these tumbler models:

32DG

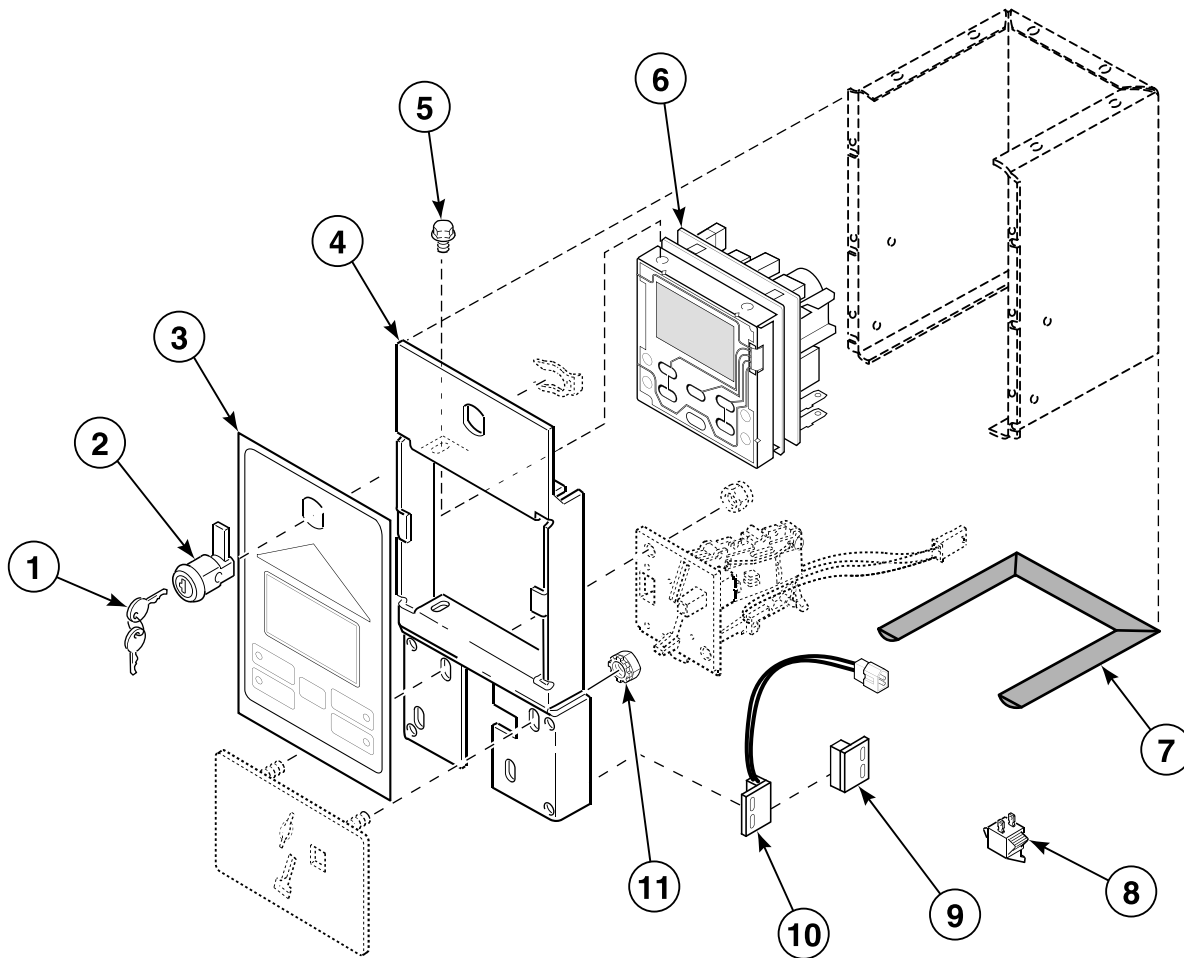
JCD32DG

JTD32DG

SCD32DG

STD32DG

# Electronic Control

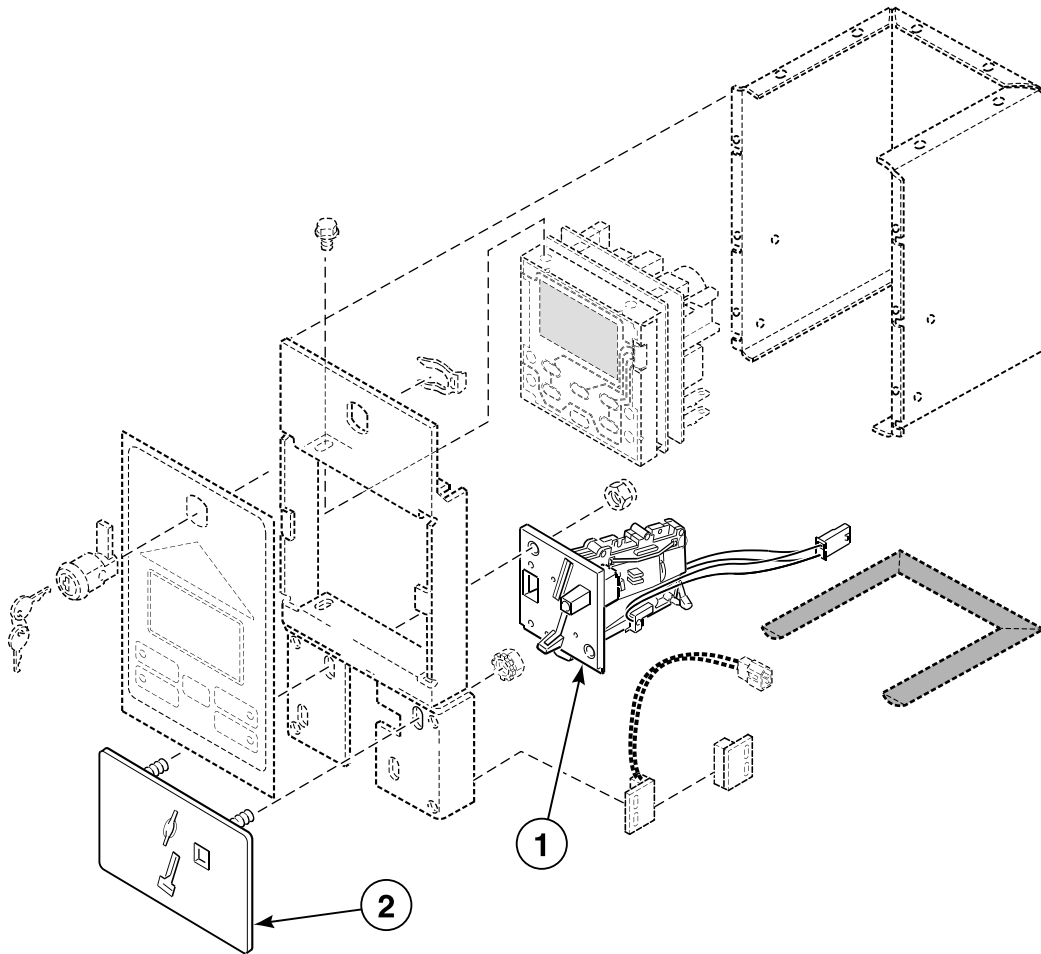


TMB2126P\_M412907

STD2 P1



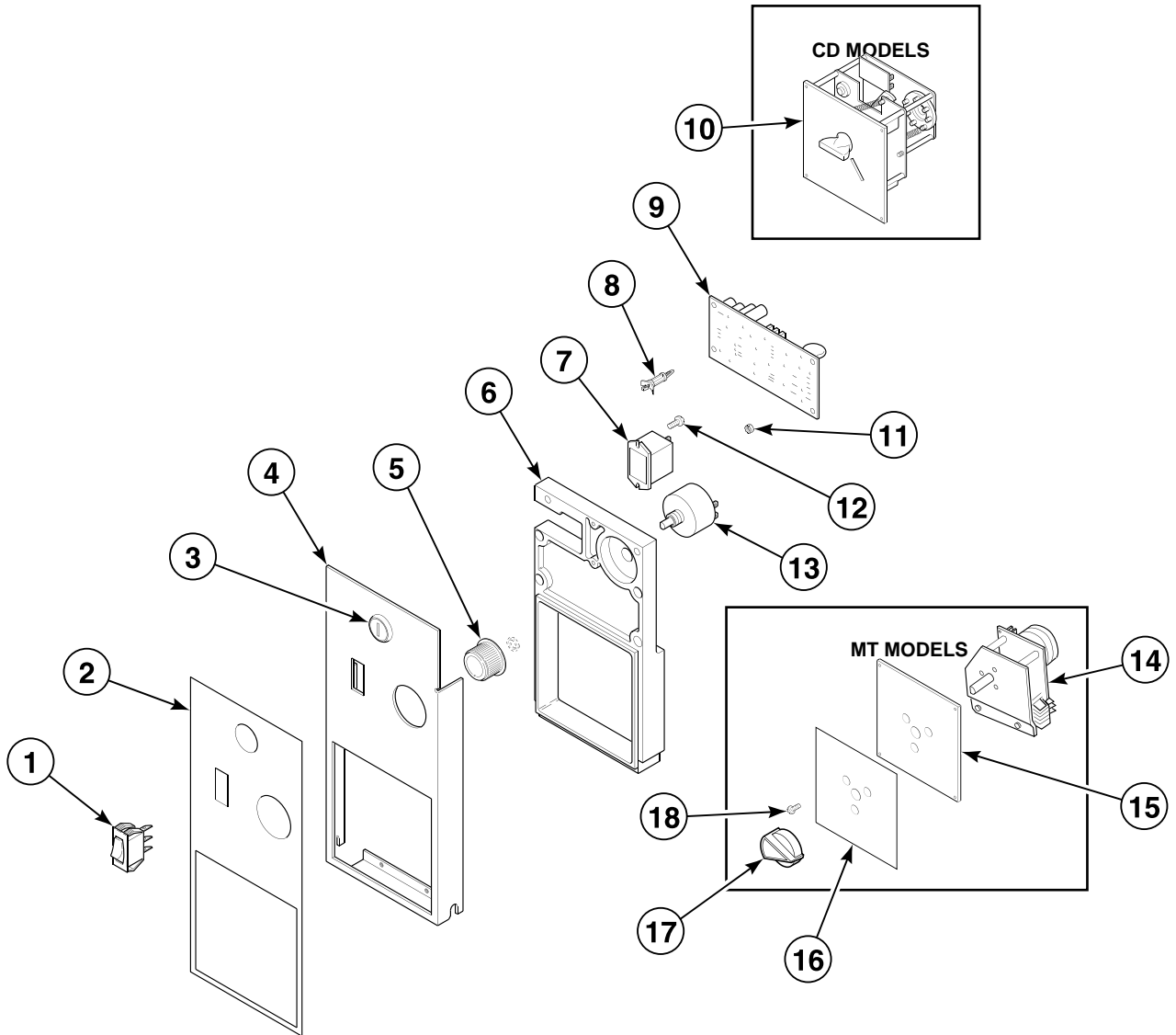
## Coin Drops and Plates



TMB2108P\_M412907

STD2 P2

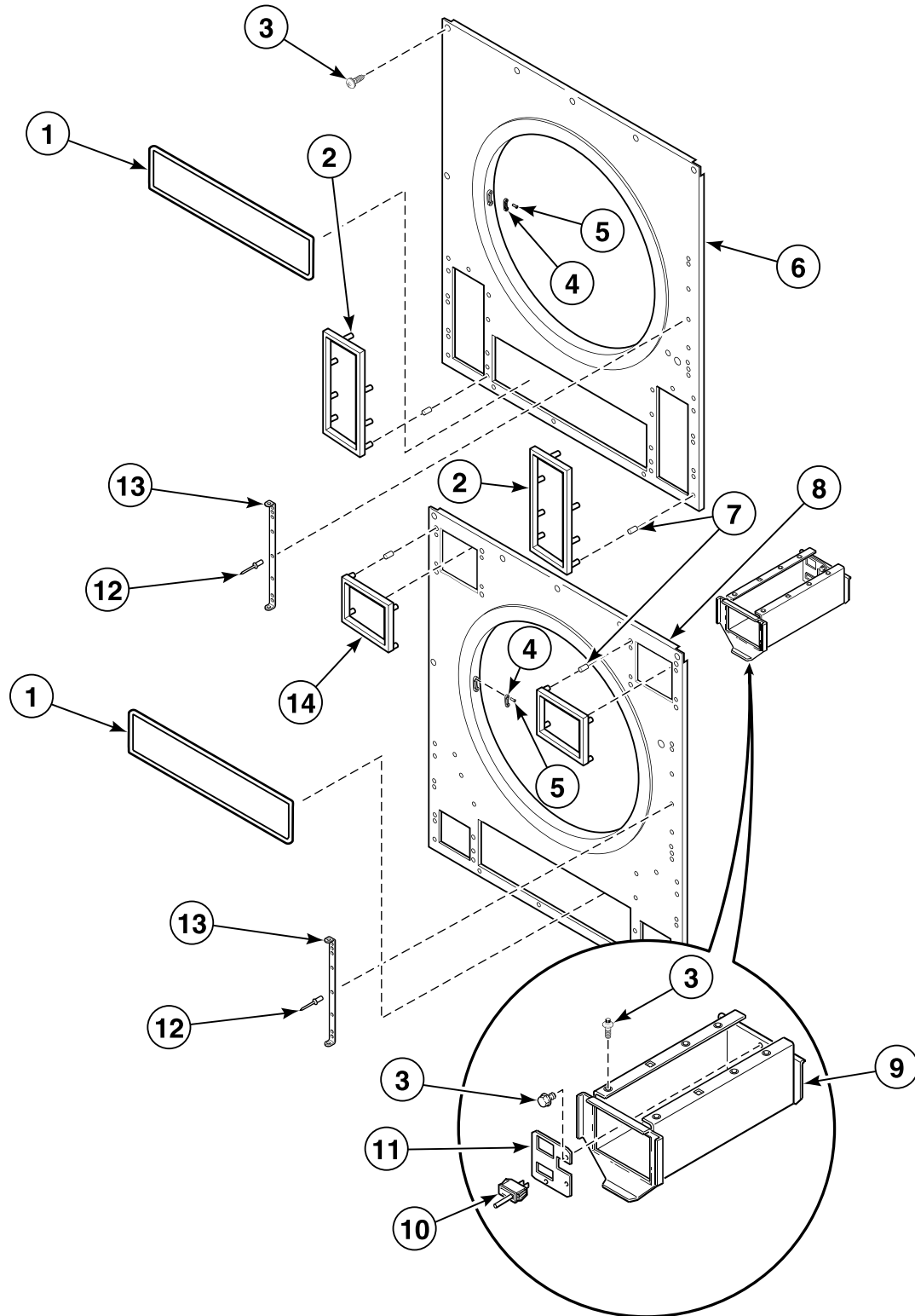
# Electro-Mechanical Control



TMB2097P\_M412907

STD2 P3

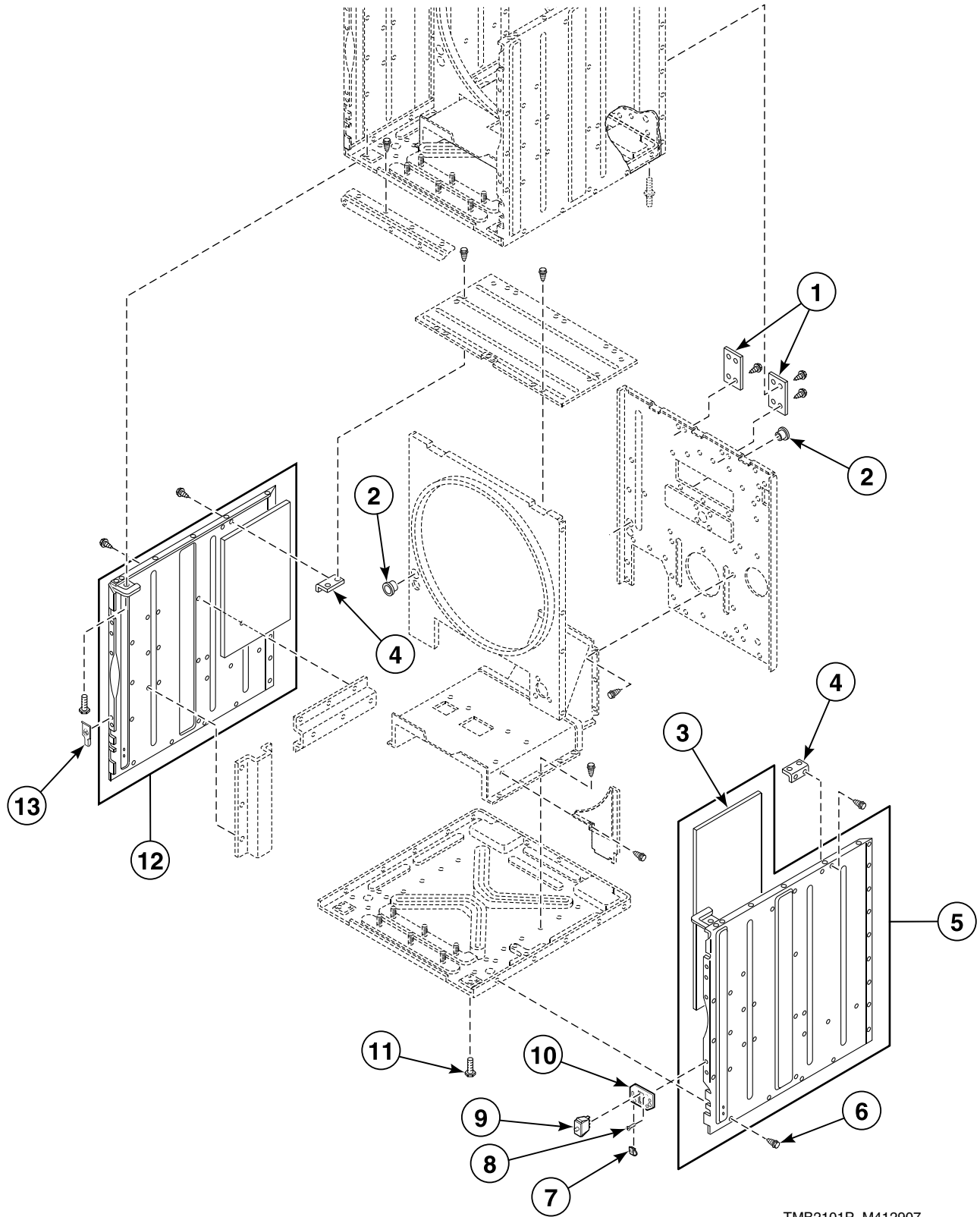
## Front Panel Assembly



TMB2100P\_M412907

STD2 P4

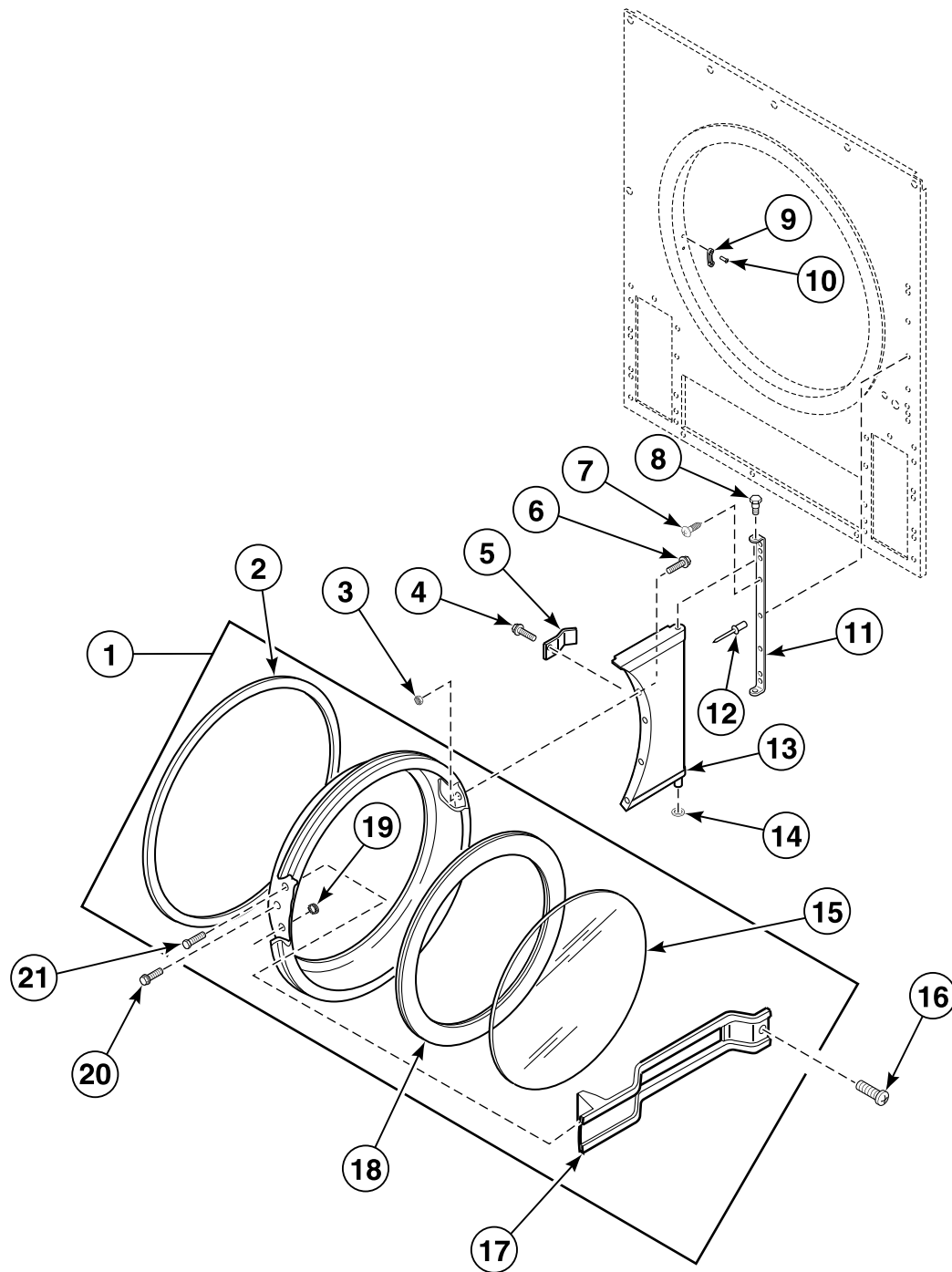
## Side Panels



TMB2101P\_M412907

STD2 P5

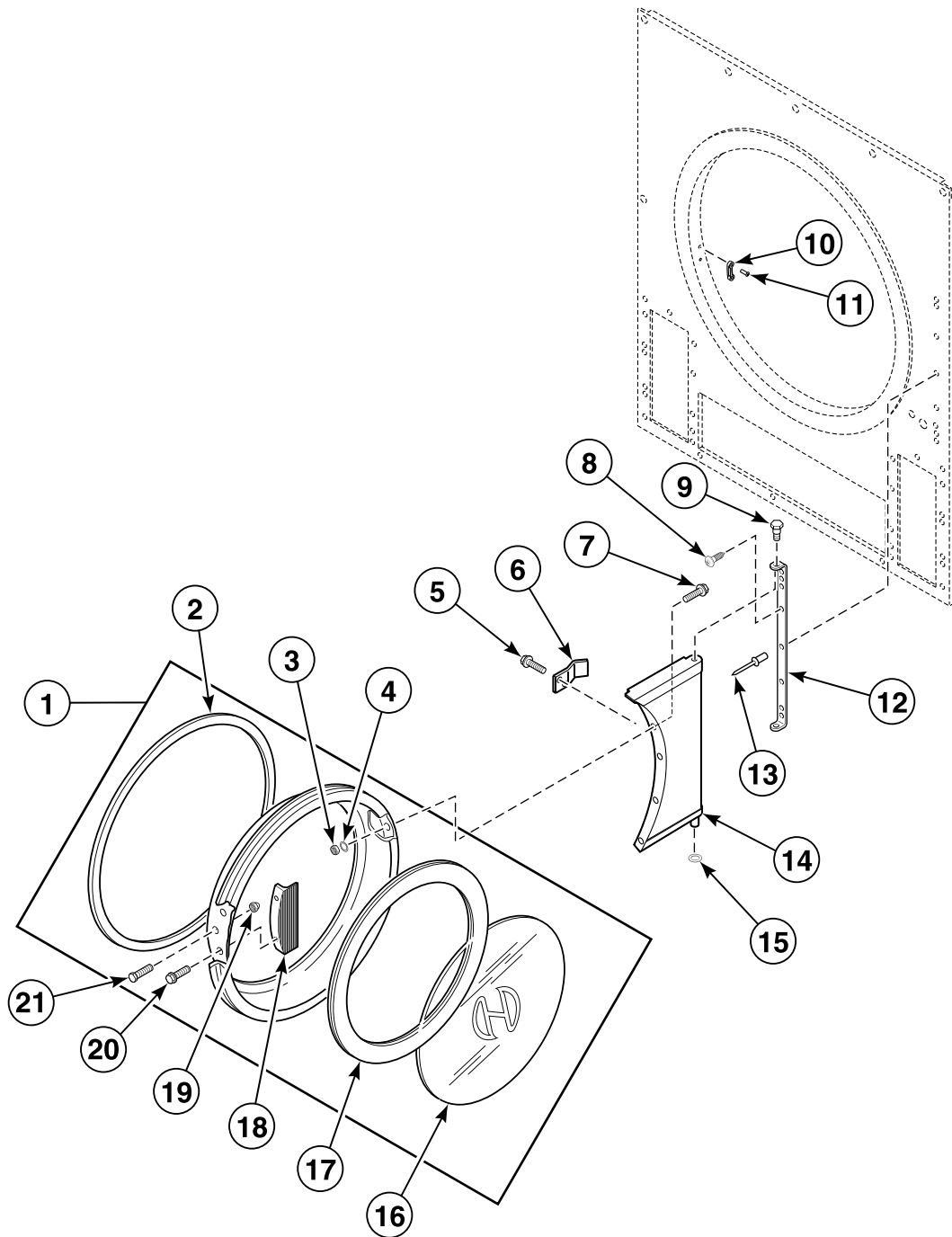
## Loading Door - Models 32DG, SCD32DG and STD32DG



TMB2102P\_M412907

STD2 P6

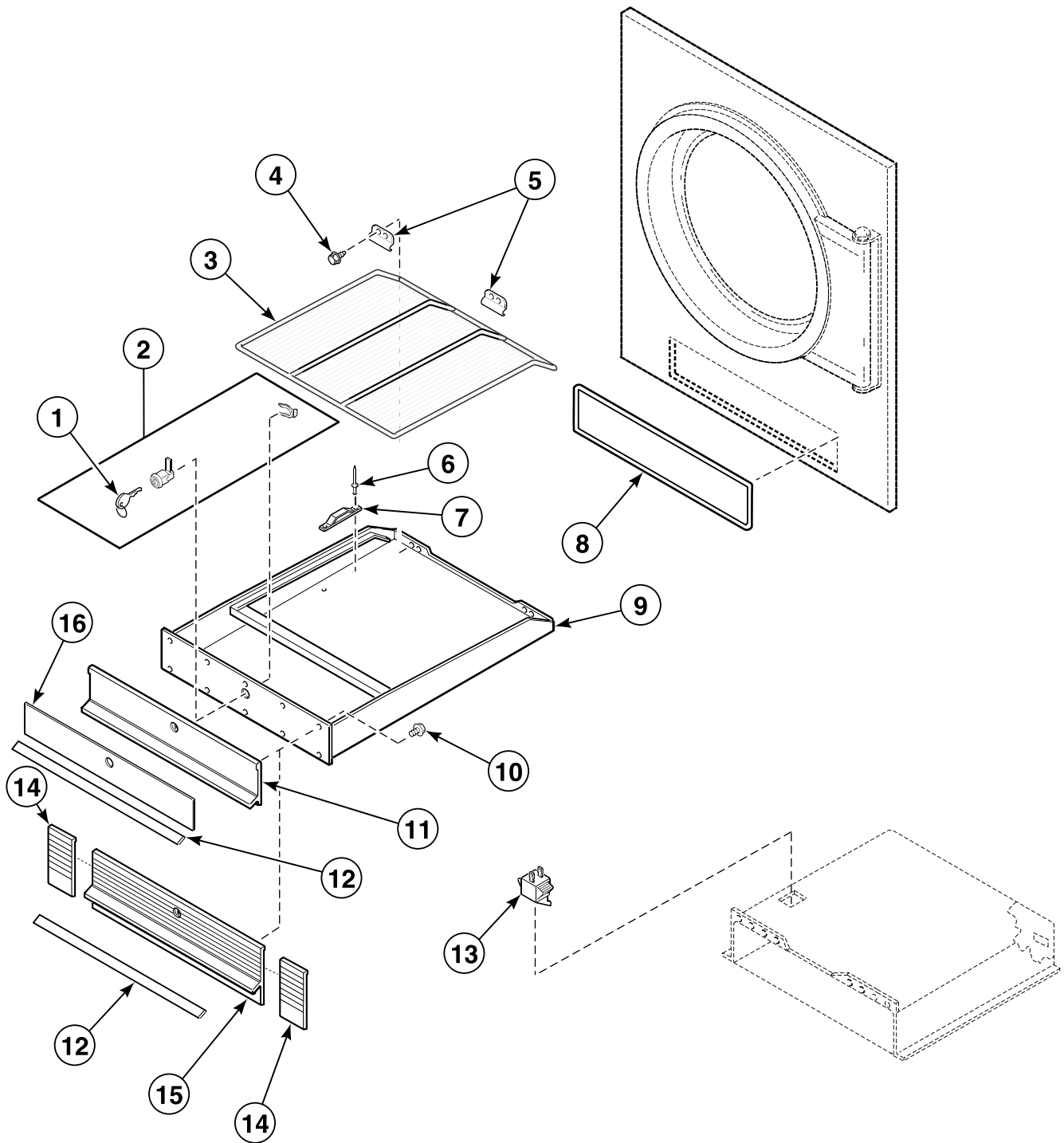
## Loading Door - Models JCD32DG and JTD32DG



TMB2103P\_M412907

STD2 P7

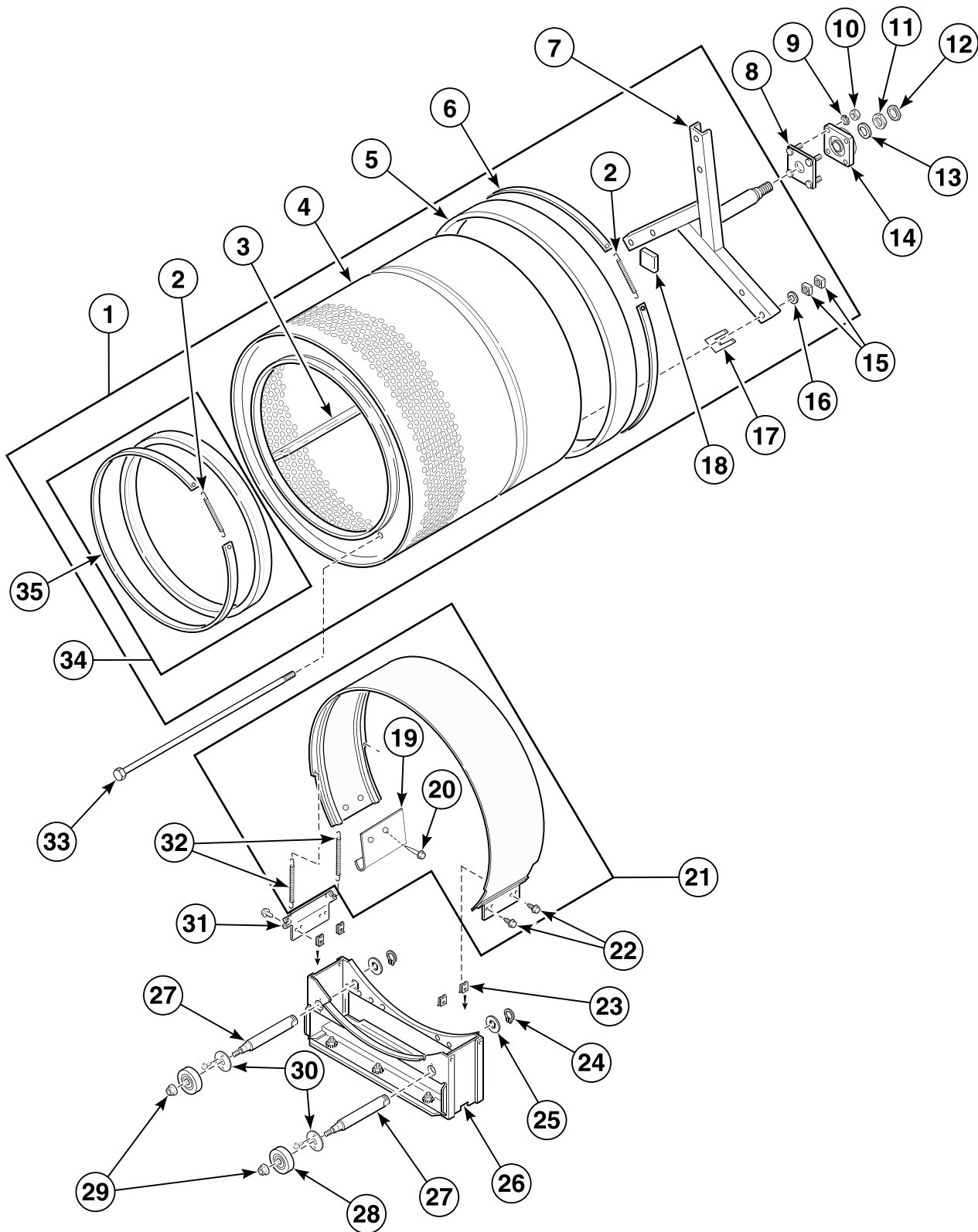
# Lint Drawer



TMB2153P\_M412907

STD2 P8

# Cylinder

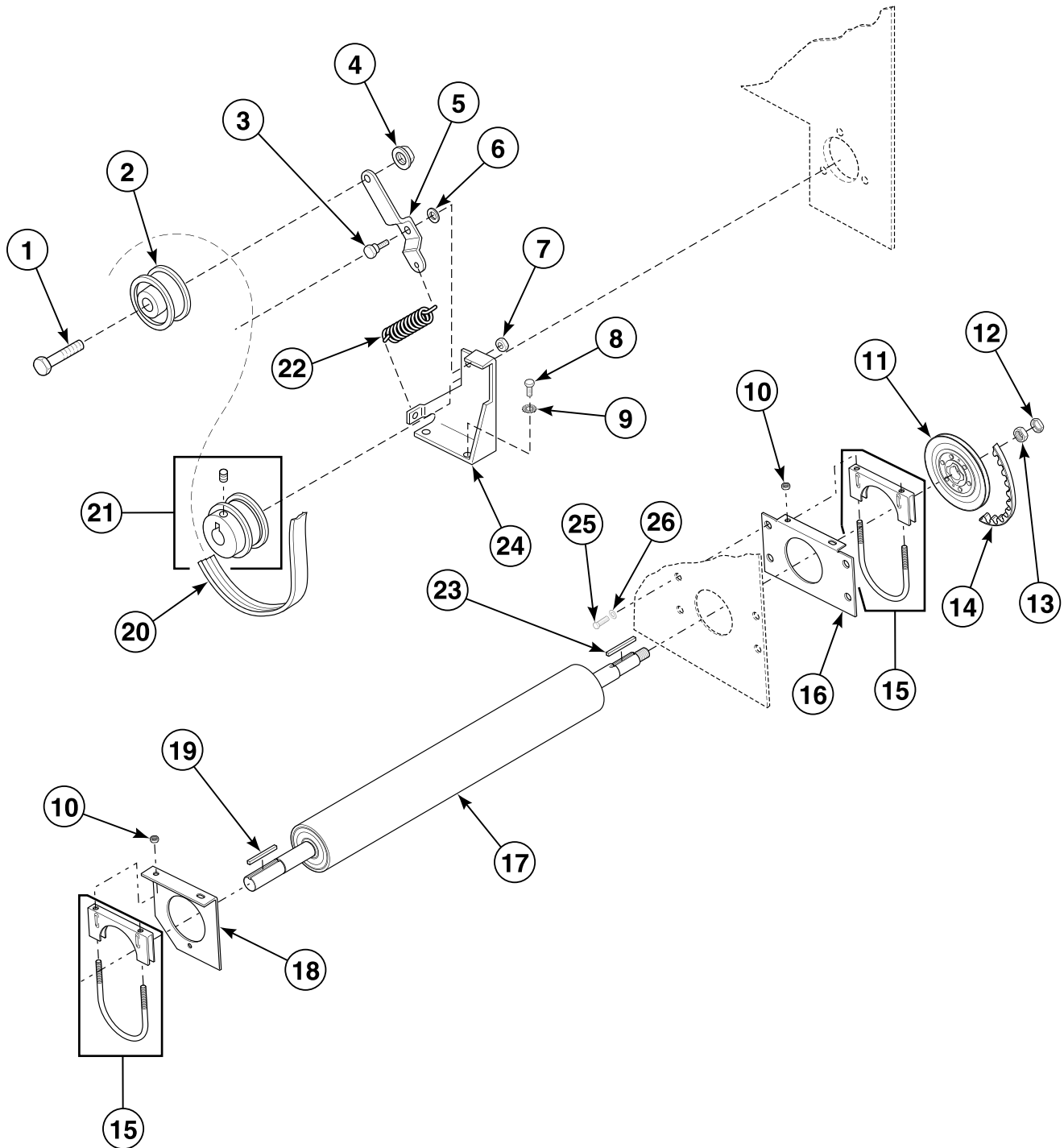


TMB2145P\_M412907

STD2 P9



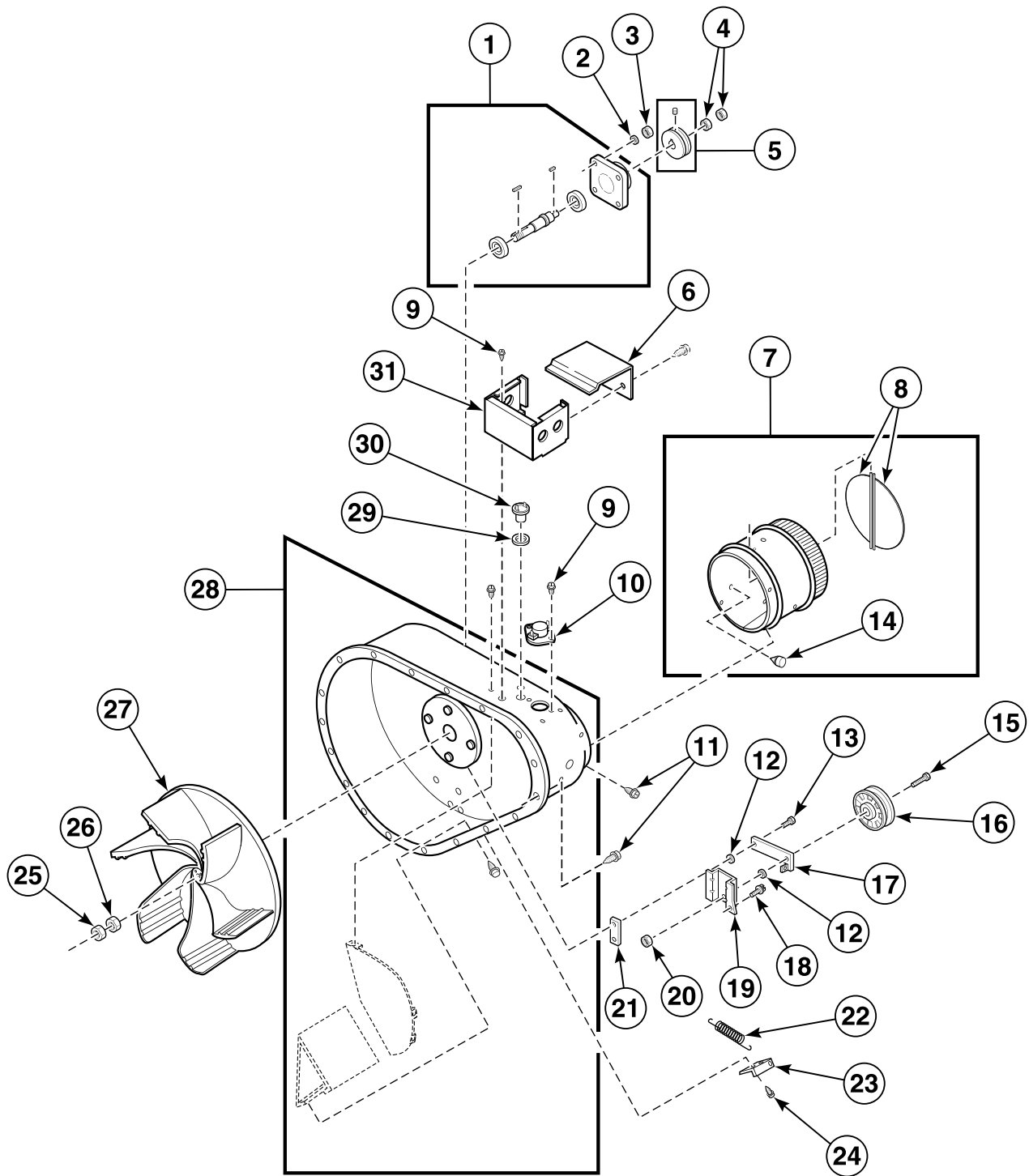
# Drive Shaft



T286P\_M412907

STD2 P10

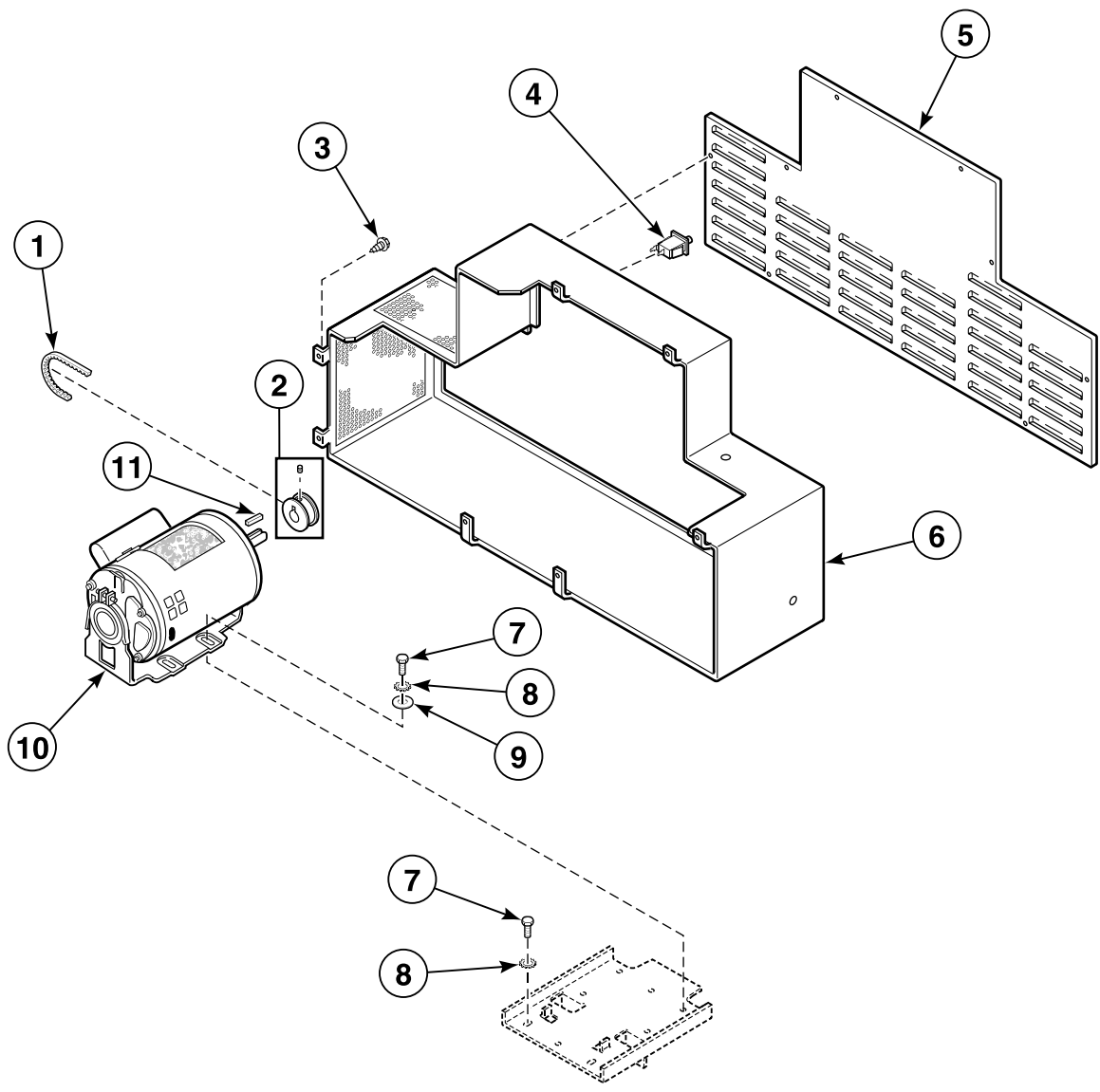
# Blower Housing and Fan



TMB2104P\_M412907

STD2 P11

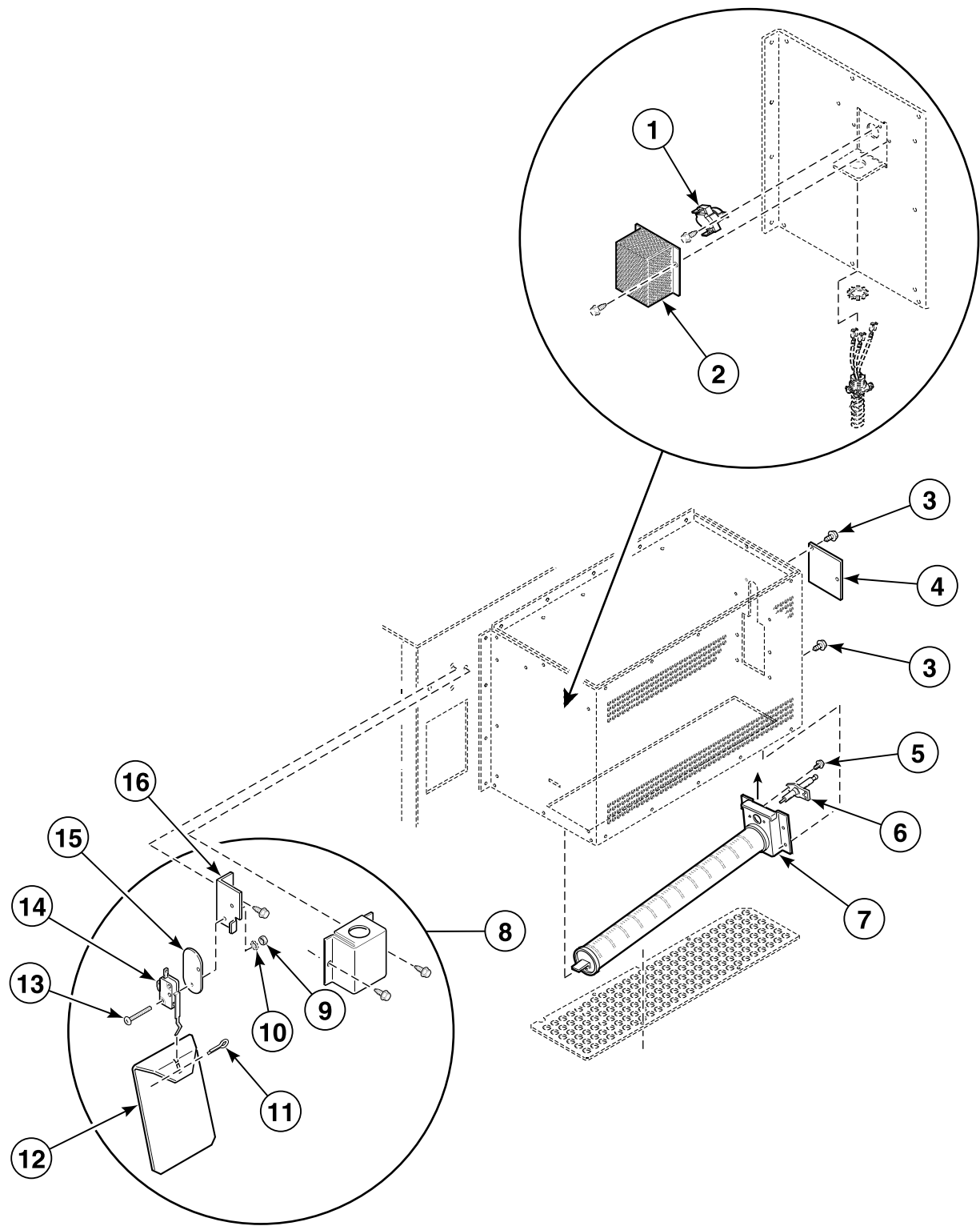
# Motor and Belt Guard



TMB2154P\_M412907

STD2 P12

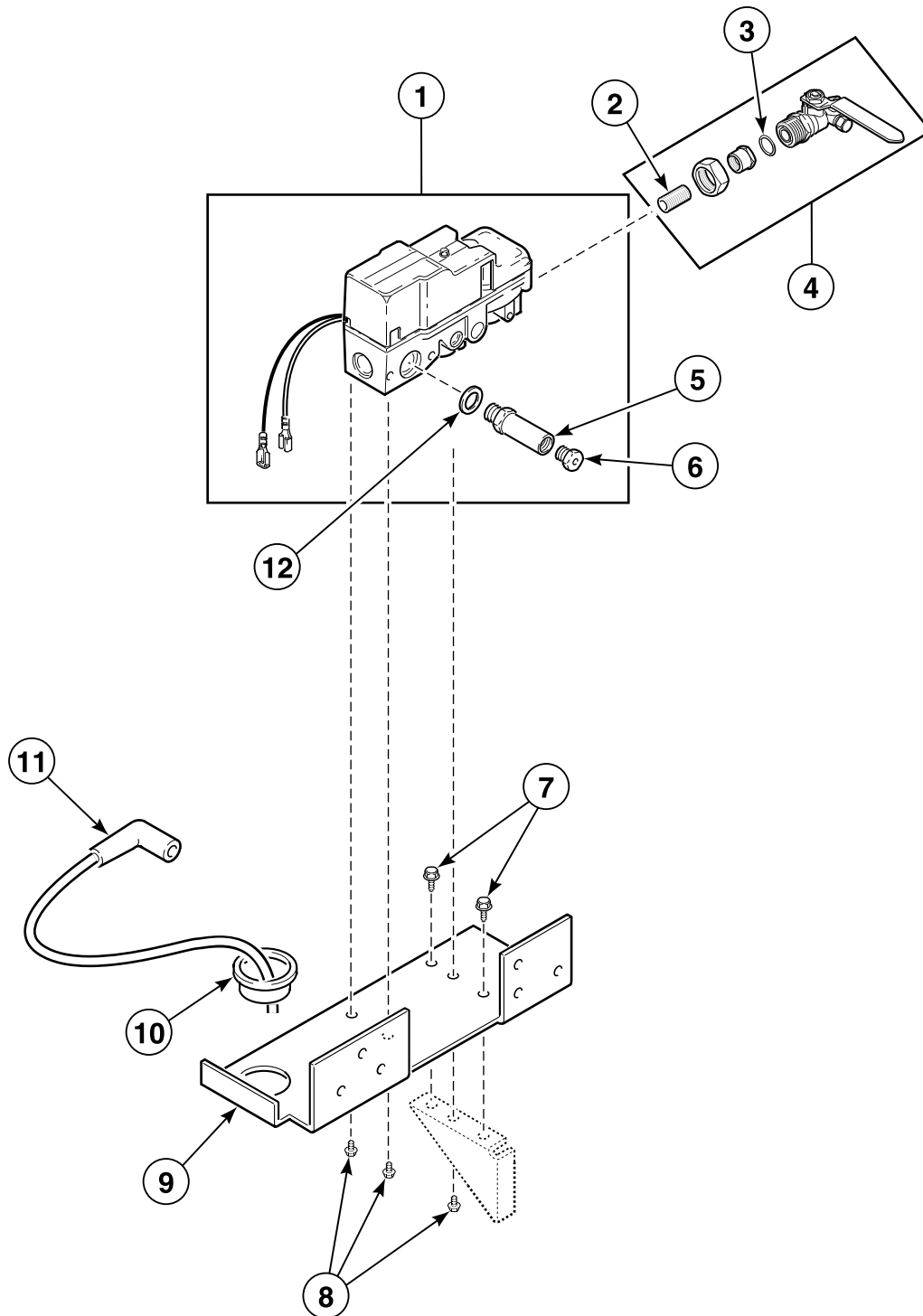
# Thermostat and Burner



TMB2105P\_M412907

STD2 P13

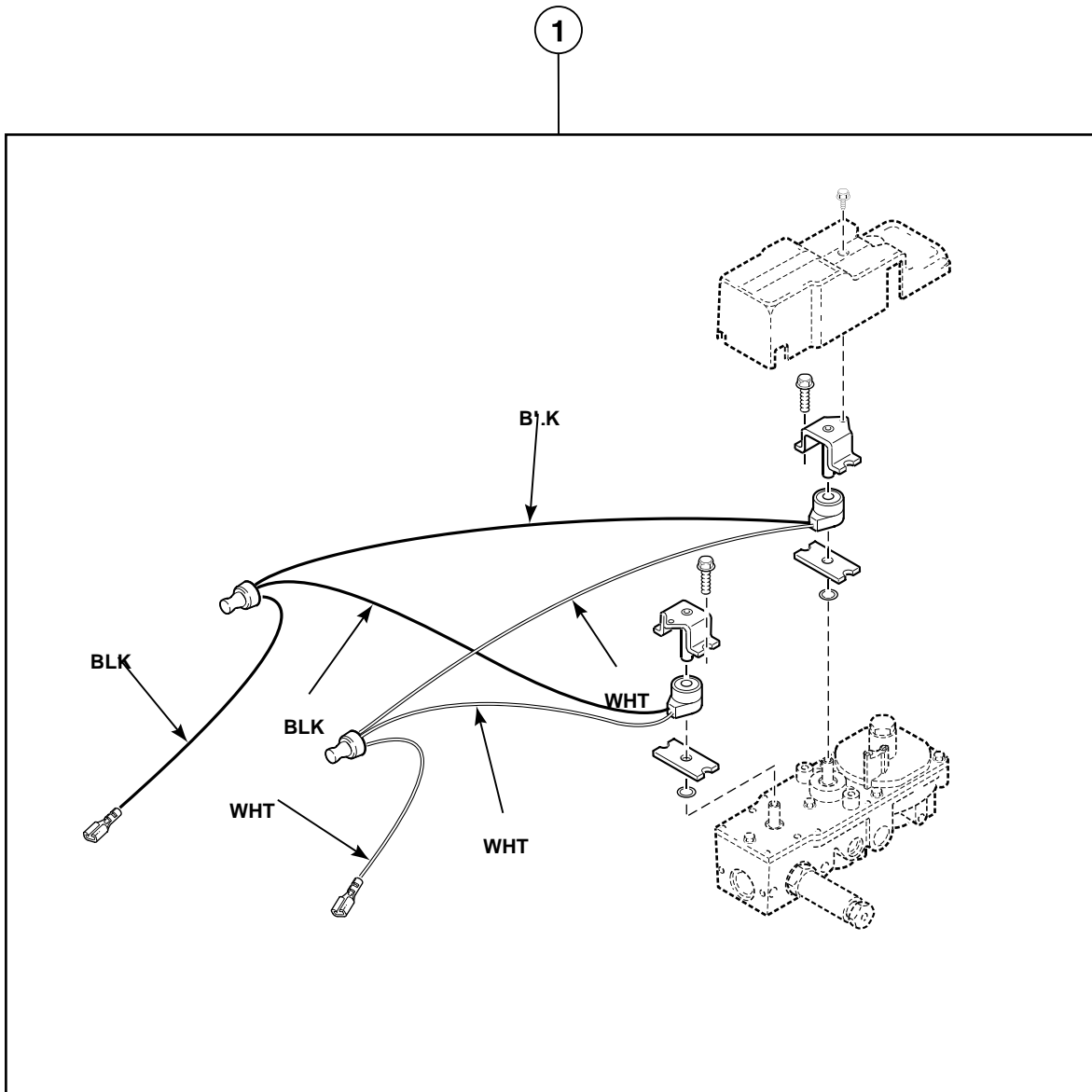
# Gas Valve



TMB2114P\_M412907

STD2 P14

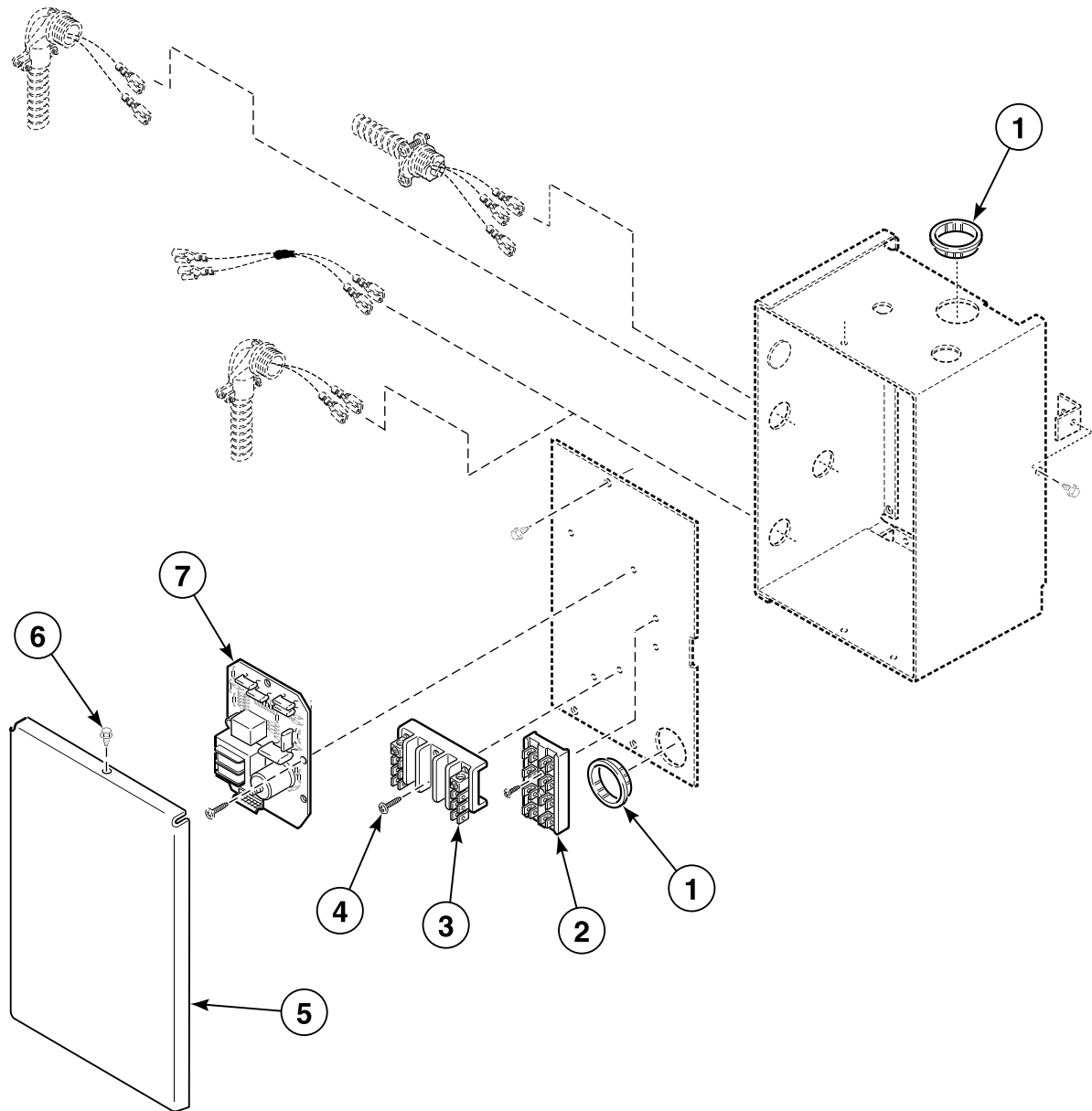
# Gas Valve Coils



TMB2115P\_M412907

STD2 P15

## Junction Box - 120, 208 or 240 Volt/60 Hertz

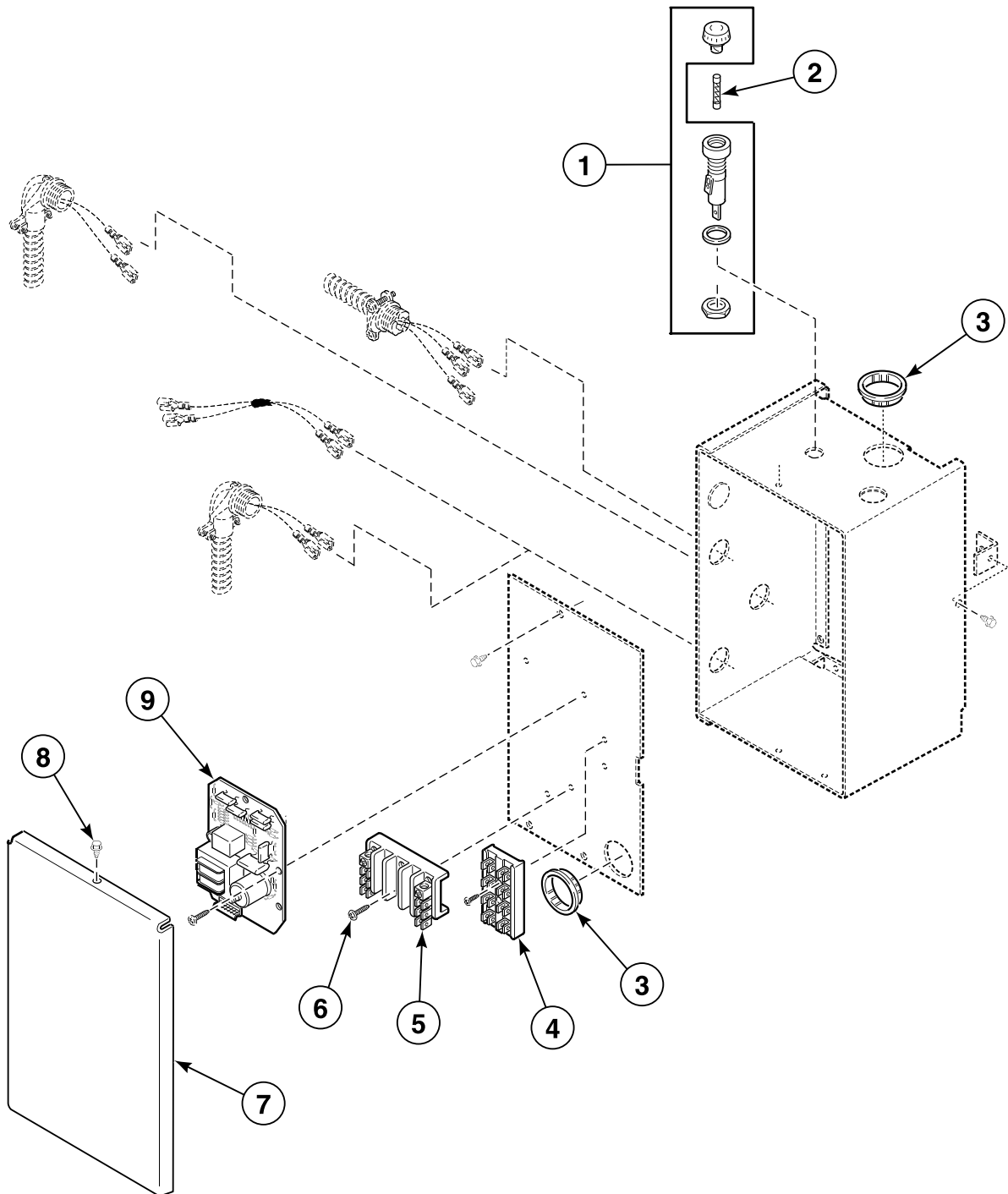


TMB2120P\_M412907

STD2 P16

# Junction Box - 240 Volt/50 Hertz or 220 Volt/60 Hertz

2 Wire



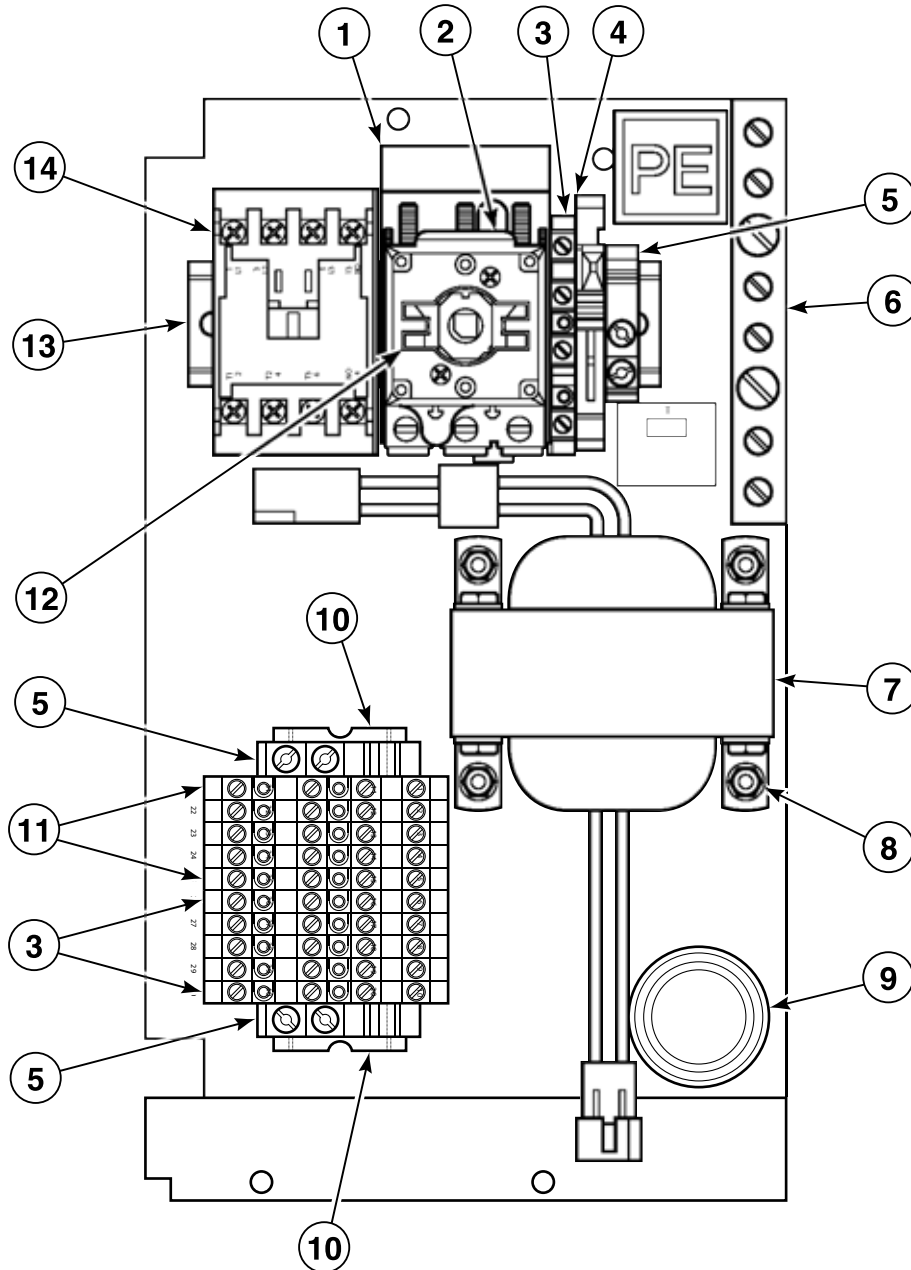
TMB2150P\_M412907

## STD2 P17



# Contactor Box

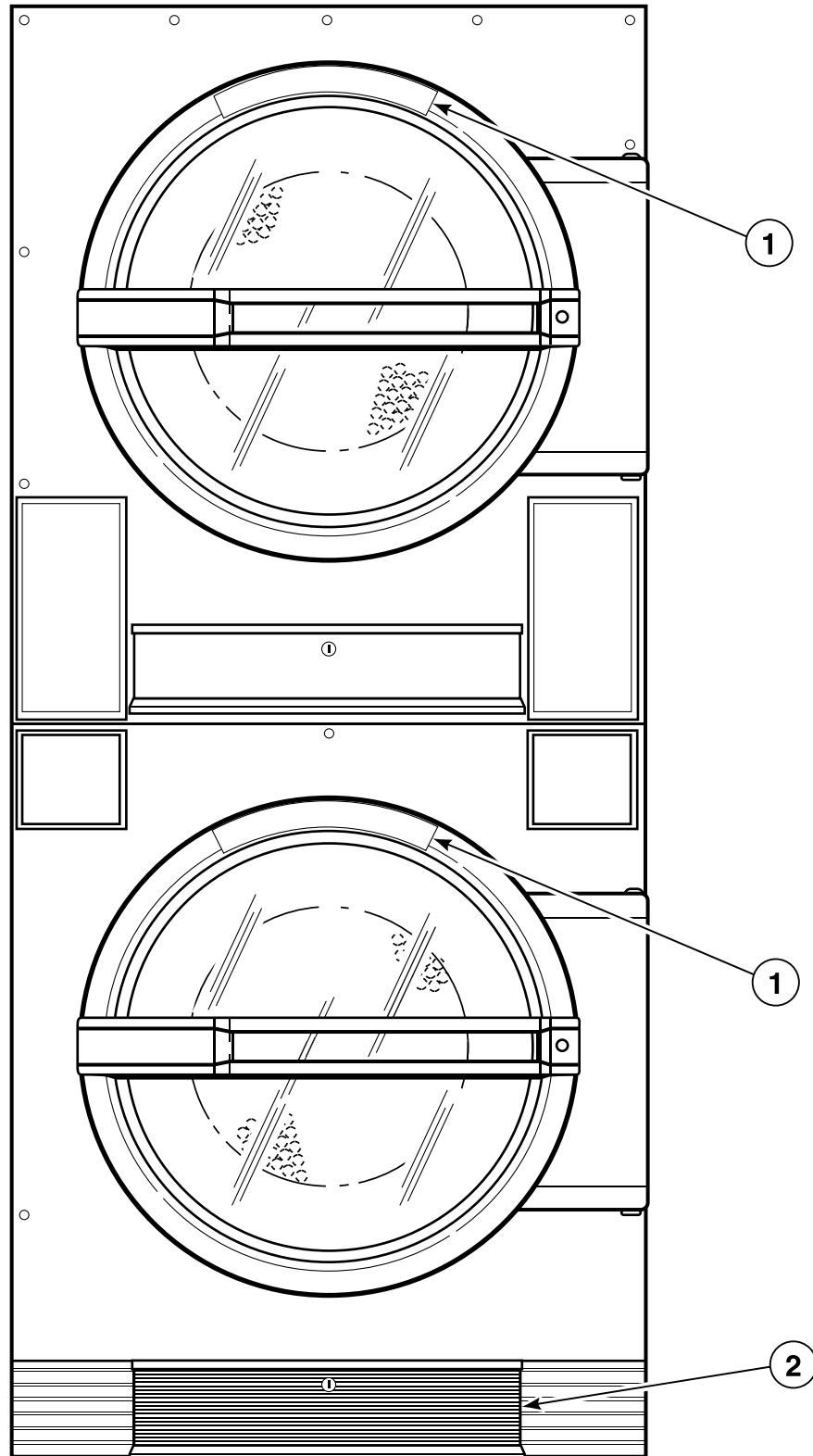
CE Models  
230 Volt/50 Hertz/1 Phase



TMB2107P\_M412907

STD2 P18

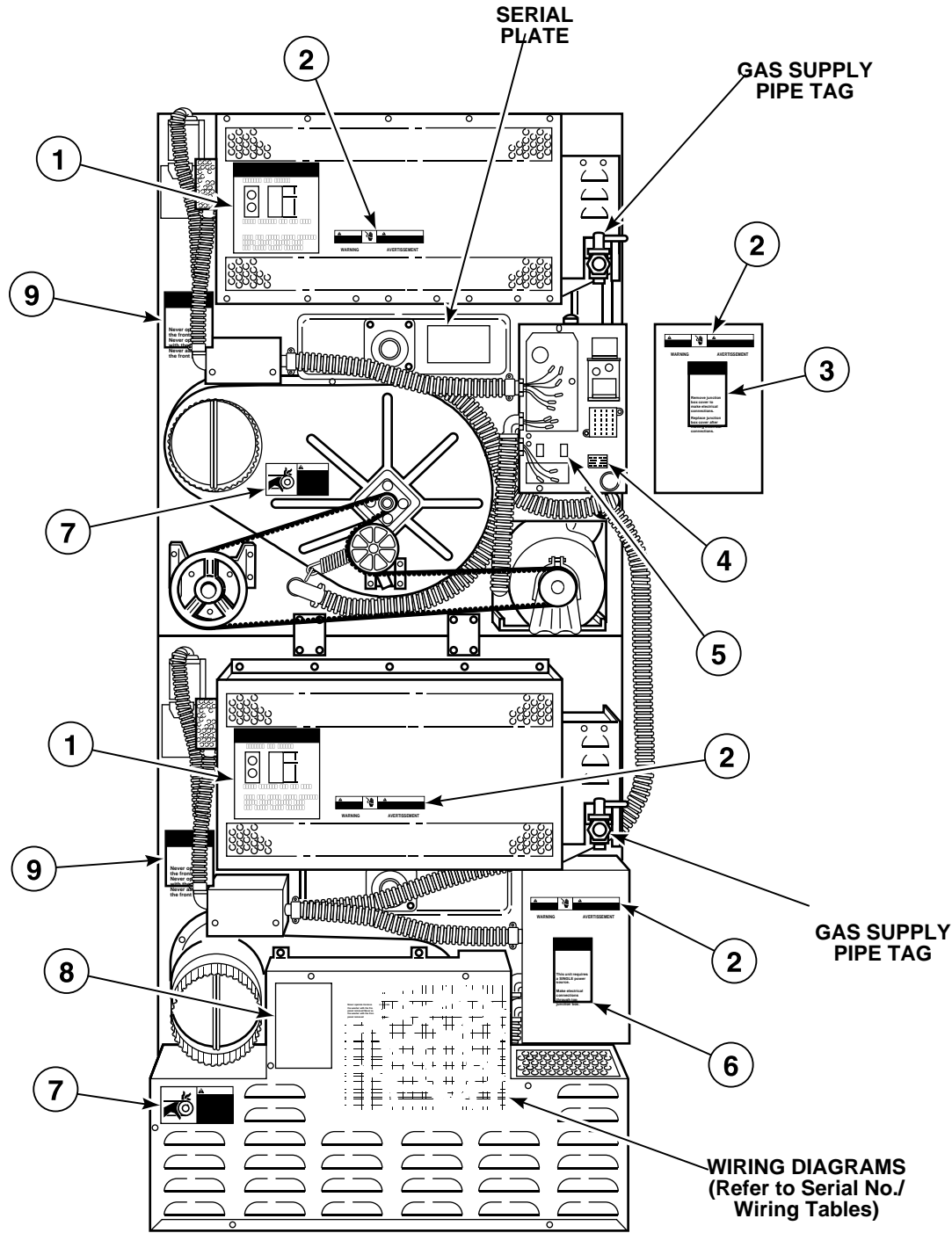
## Stickers and Labels - Front of Machine



T310P\_M412907

STD2 P19

# Stickers and Labels - Rear of Machine



TMB2116P\_M412907

STD2 P20