

# Commercial Automatic Washers **WA1**

Refer to Page 3 for Model Numbers

Parts

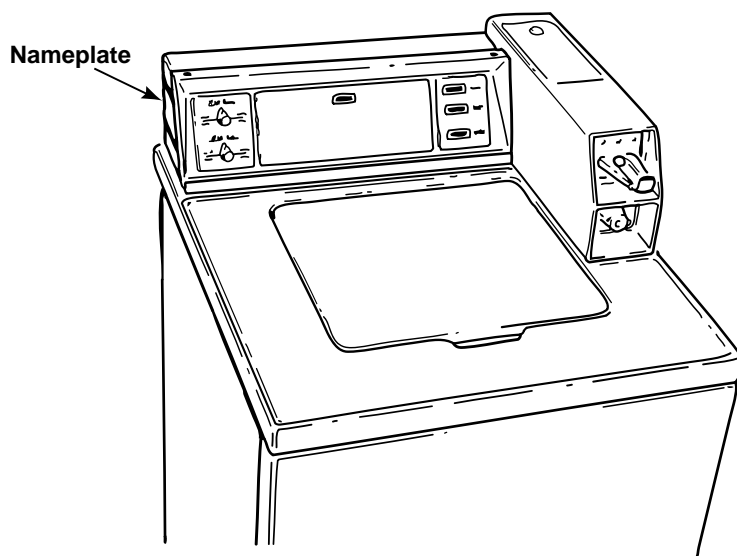
## Parts Ordering Information

If literature or replacement parts are required, contact the source from whom the machine was purchased or contact Alliance Laundry Systems at for the name and address of the nearest authorized parts distributor.

For technical assistance, call either of the numbers listed below:

## Nameplate Location

When calling or writing about your product, be sure to mention model and serial numbers. Model and serial numbers are located on nameplate(s) as shown.



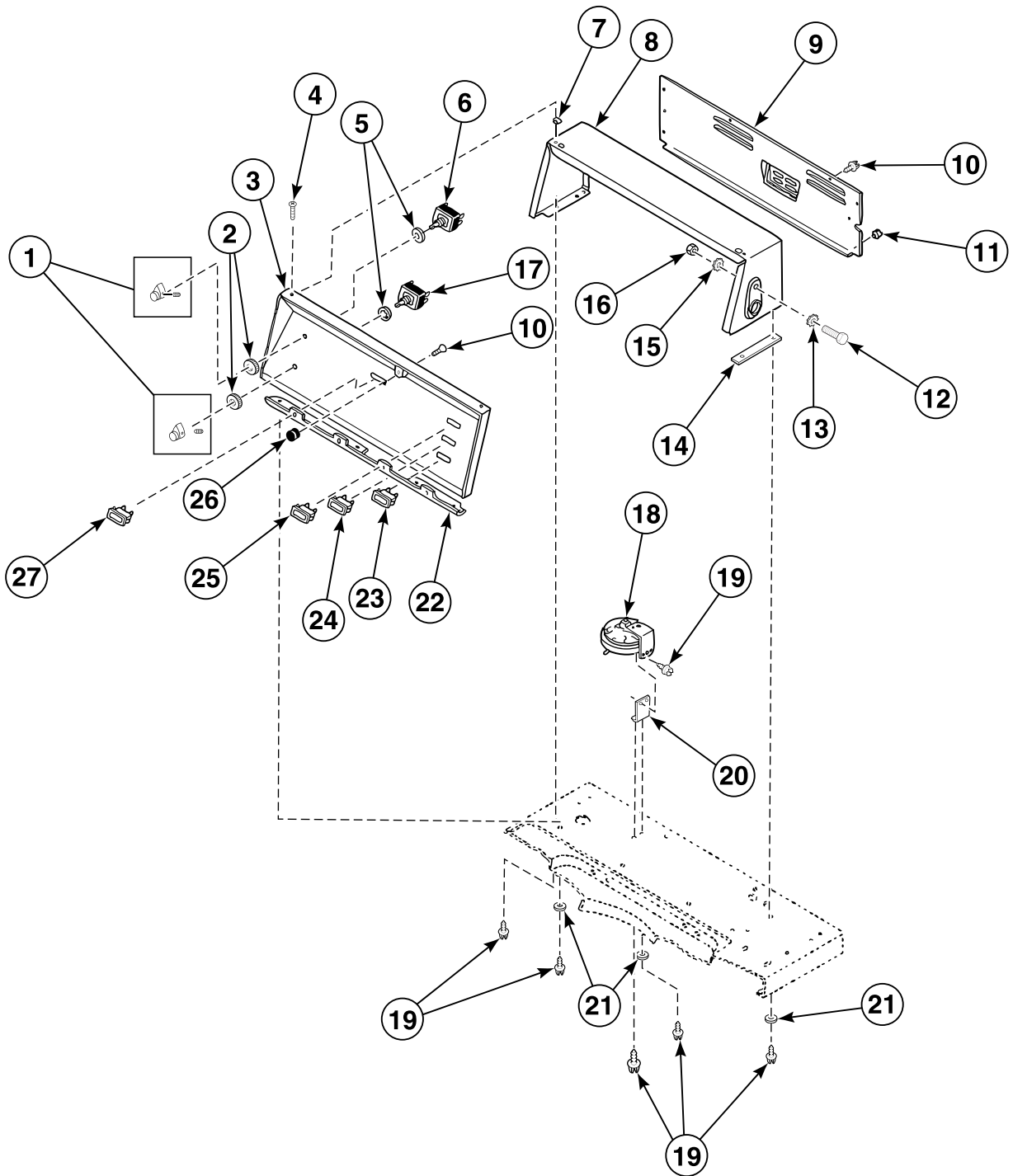
TLW1576P\_201928

## Model Identification

Information in this manual is applicable to these washer models:

WA4710	WA4850	WA4950	WA4951-3000	WA4961-1300
WA4710-3000	WA4851	WA4950-3054	WA4951-3050	WA4961-3000
WA4711	WA4860	WA4950-3074	WA4951-3054	WA4961-3066
WA4711-3000	WA4861	WA4951	WA4951-3059	WA4970
WA4711-3059	WA4870	WA4951-1200	WA4951-3066	WA4971
WA4711-3074	WA4871	WA4951-1300	WA4960	WA4980
WA4720	WA4880	WA4951-2100	WA4961	WA4981
WA4721	WA4881	WA4951-2171		

## Control Panel, Control Hood and Controls

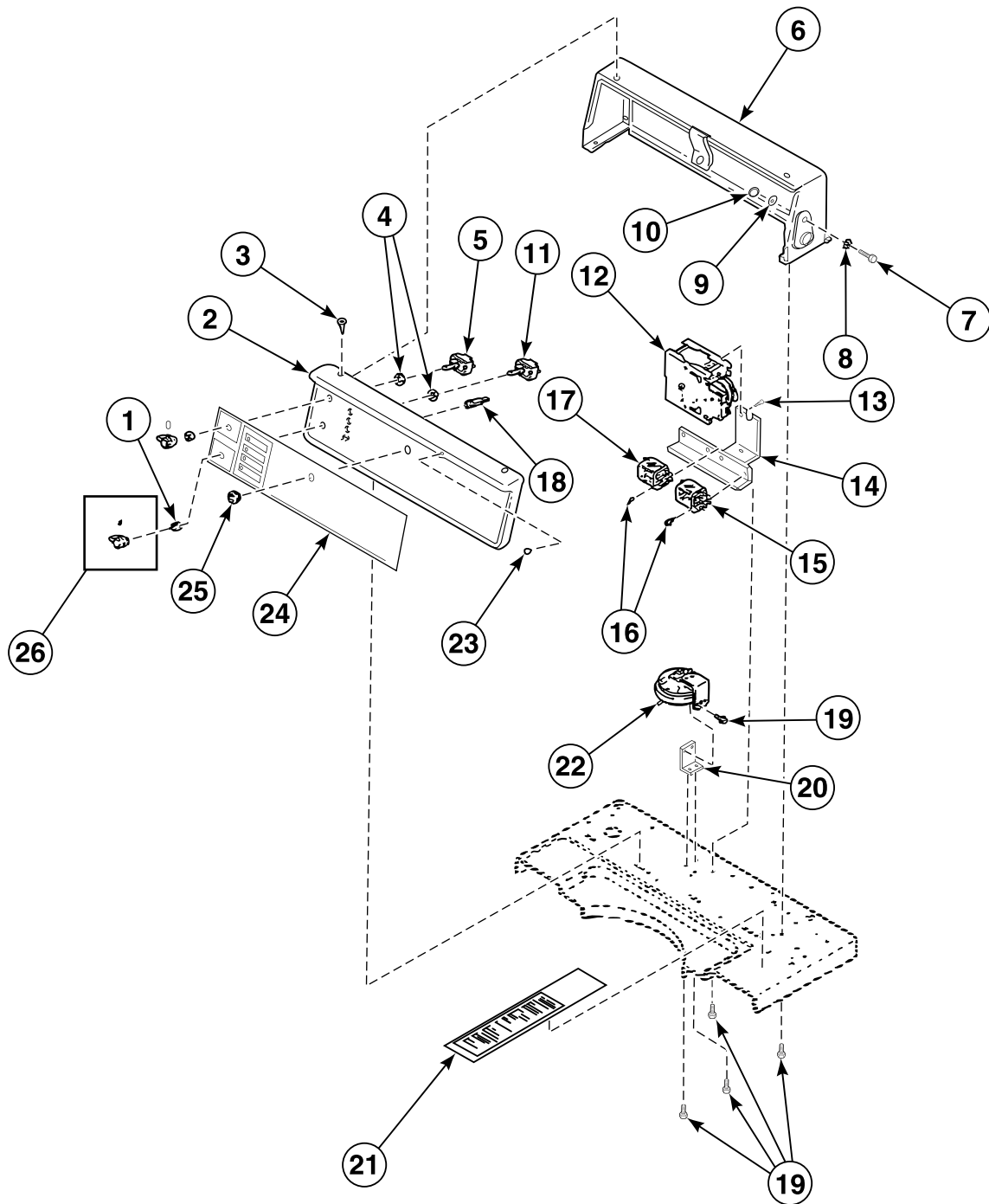


TLW1577P\_201928

WA1 P1



# Control Panel, Control Hood and Controls - Card Reader Models

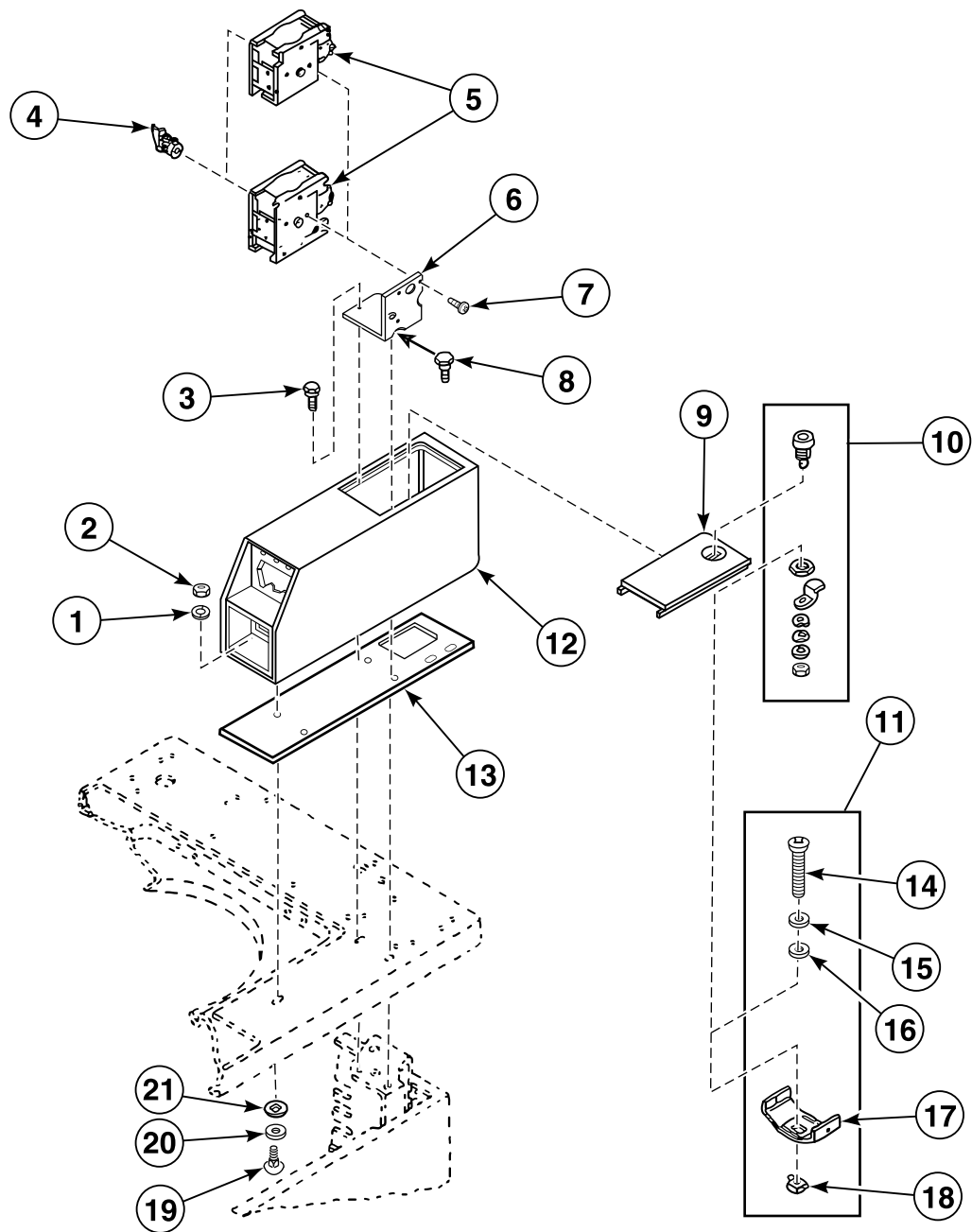


TLW1578P\_201928

WA1 P2

# Timer, Meter Case and Service Door

Metered Models

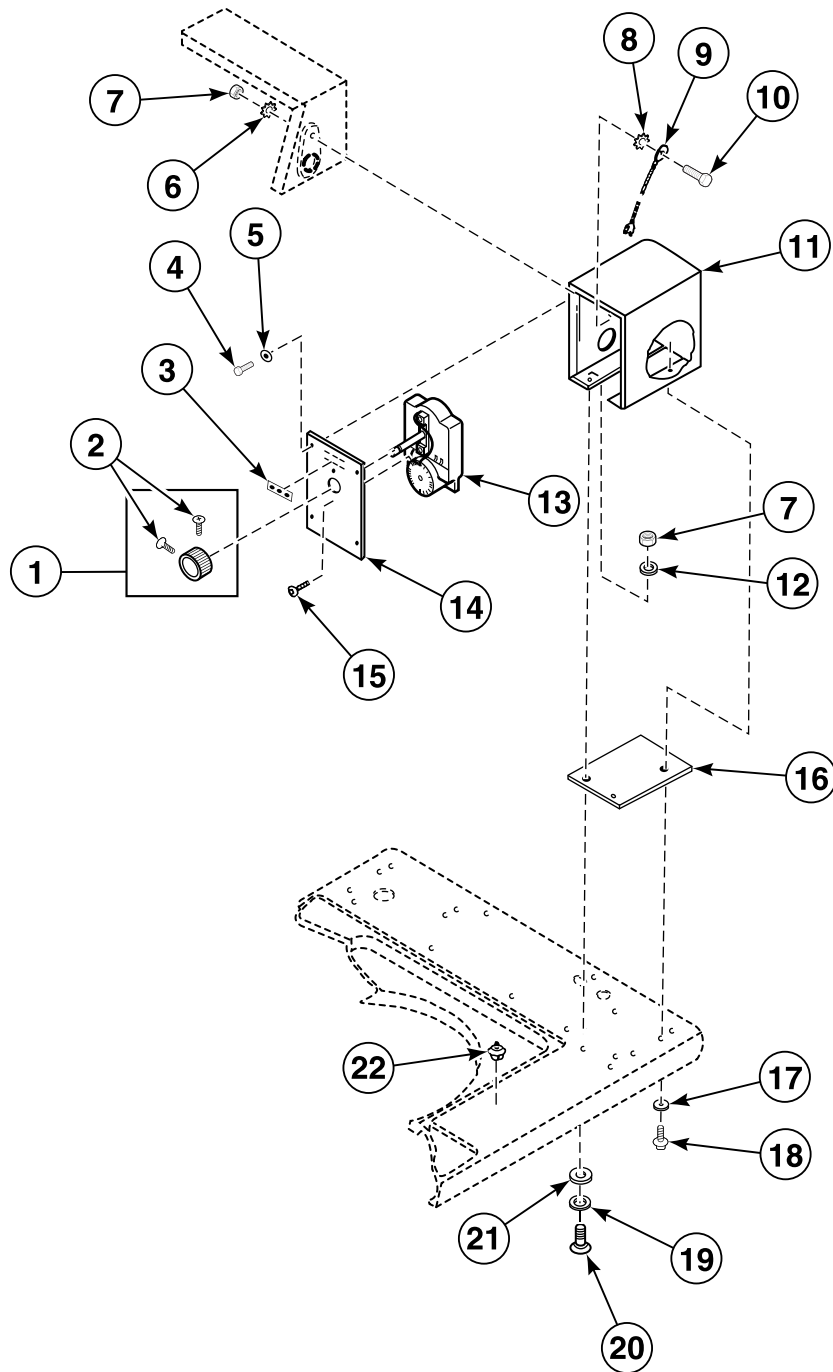


TLW1579P\_201928

WA1 P3

# Timer, Case and Plate

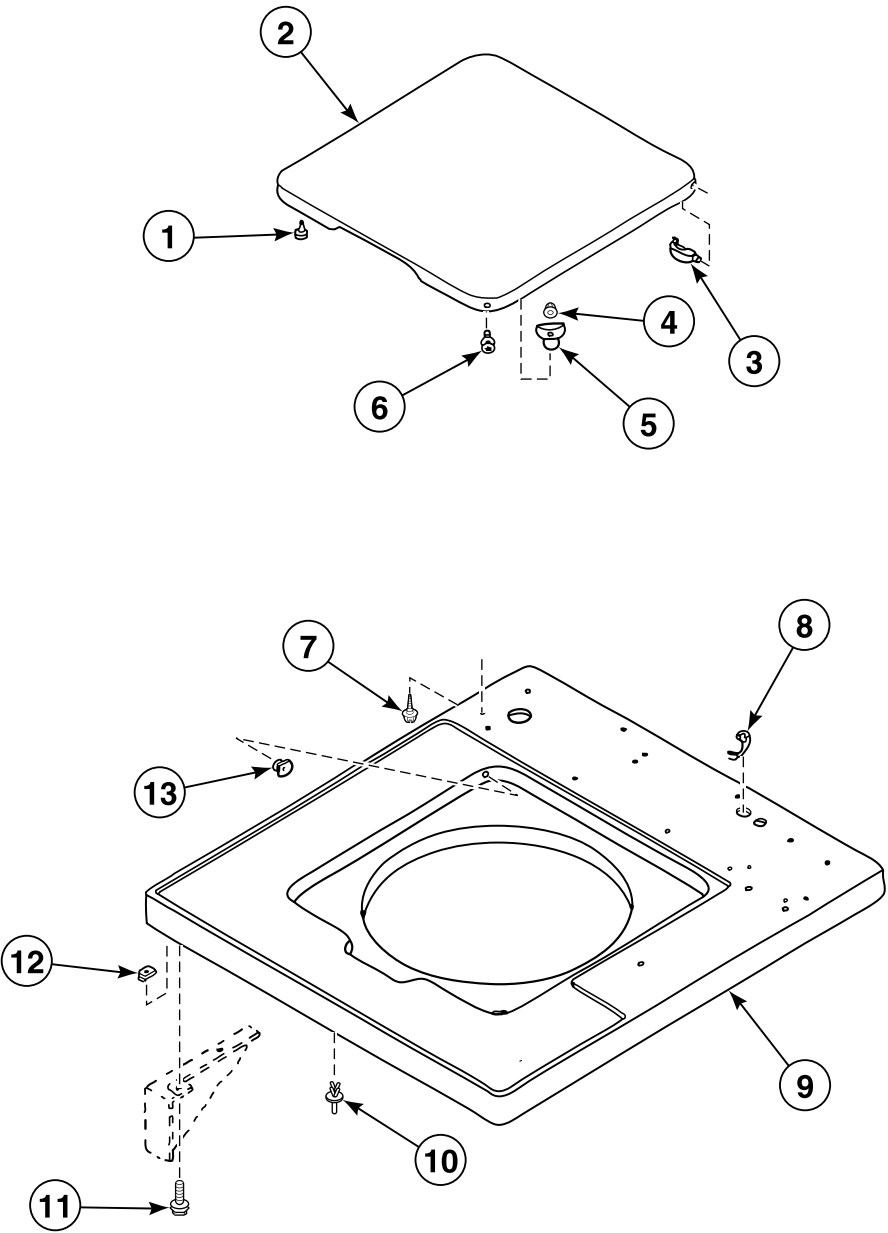
Nonmetered Models



TLW1553P\_201928

WA1 P4

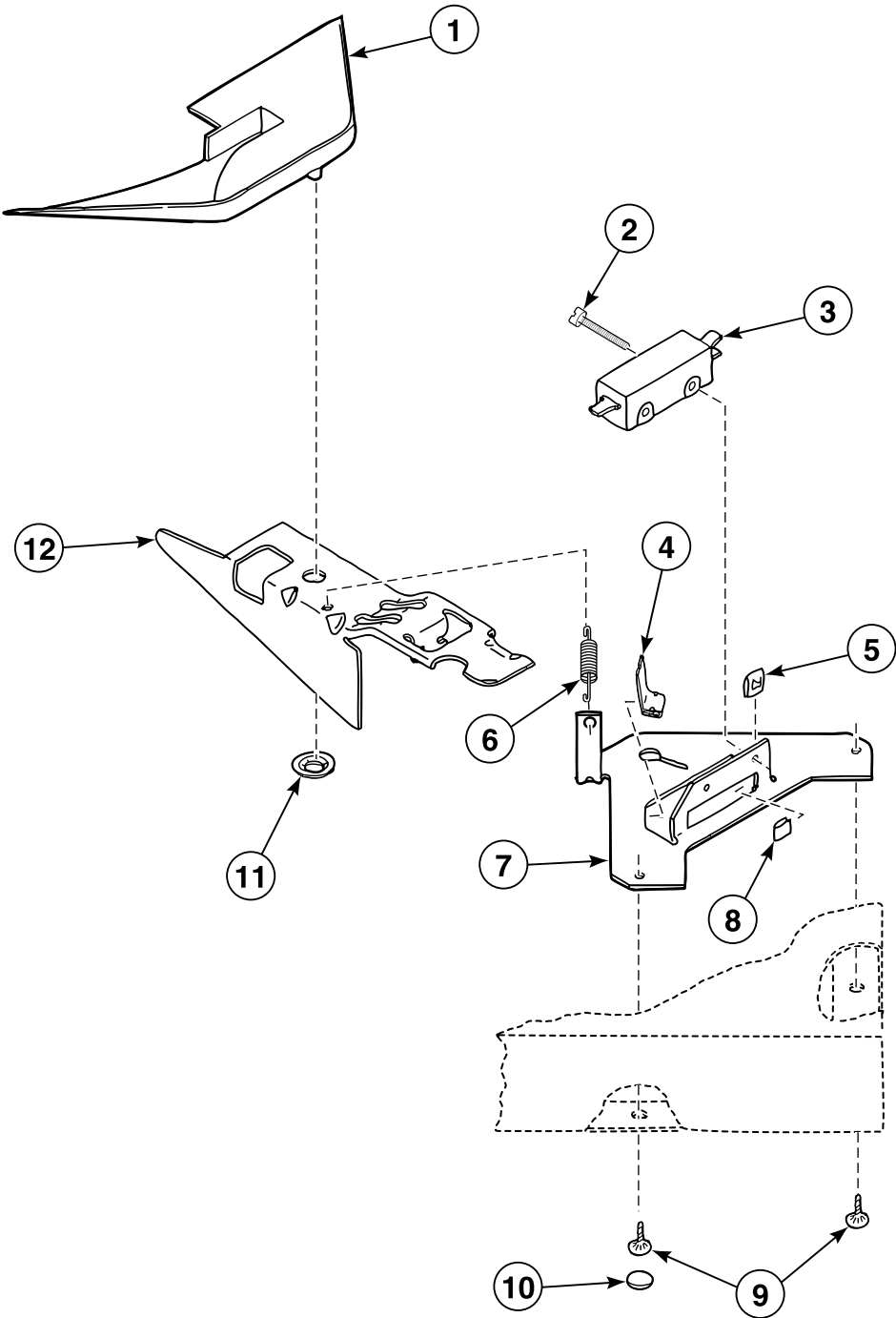
# Cabinet Top and Lid



TLW1580P\_201928

WA1 P5

# Switch and Bracket Assembly

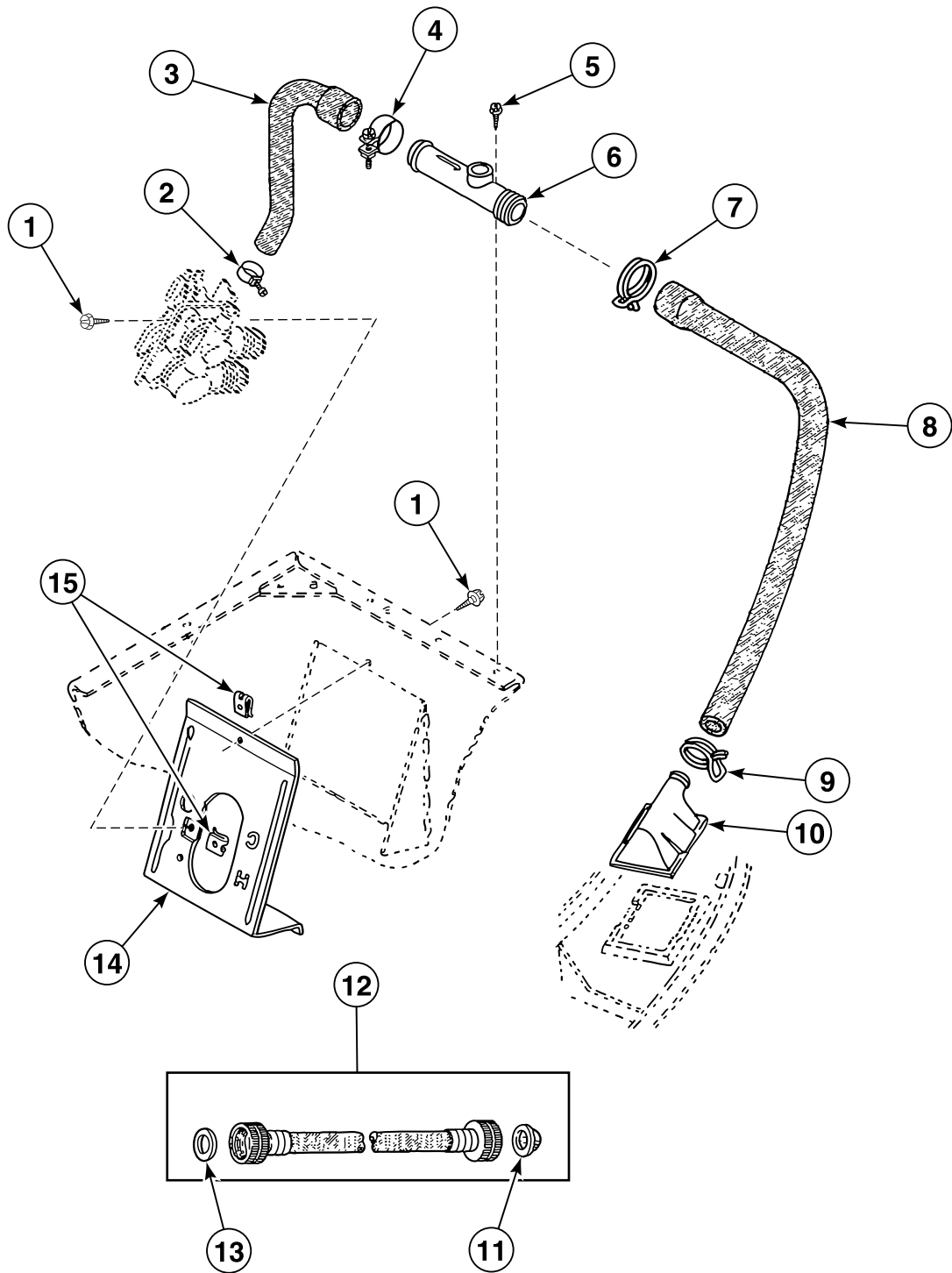


TLW1558P\_201928

WA1 P6

# Fill Hoses, Backflow Preventer and Mixing Valve Mounting Bracket (Drawing 1 of 2)

Models Through Serial No. 14F02861

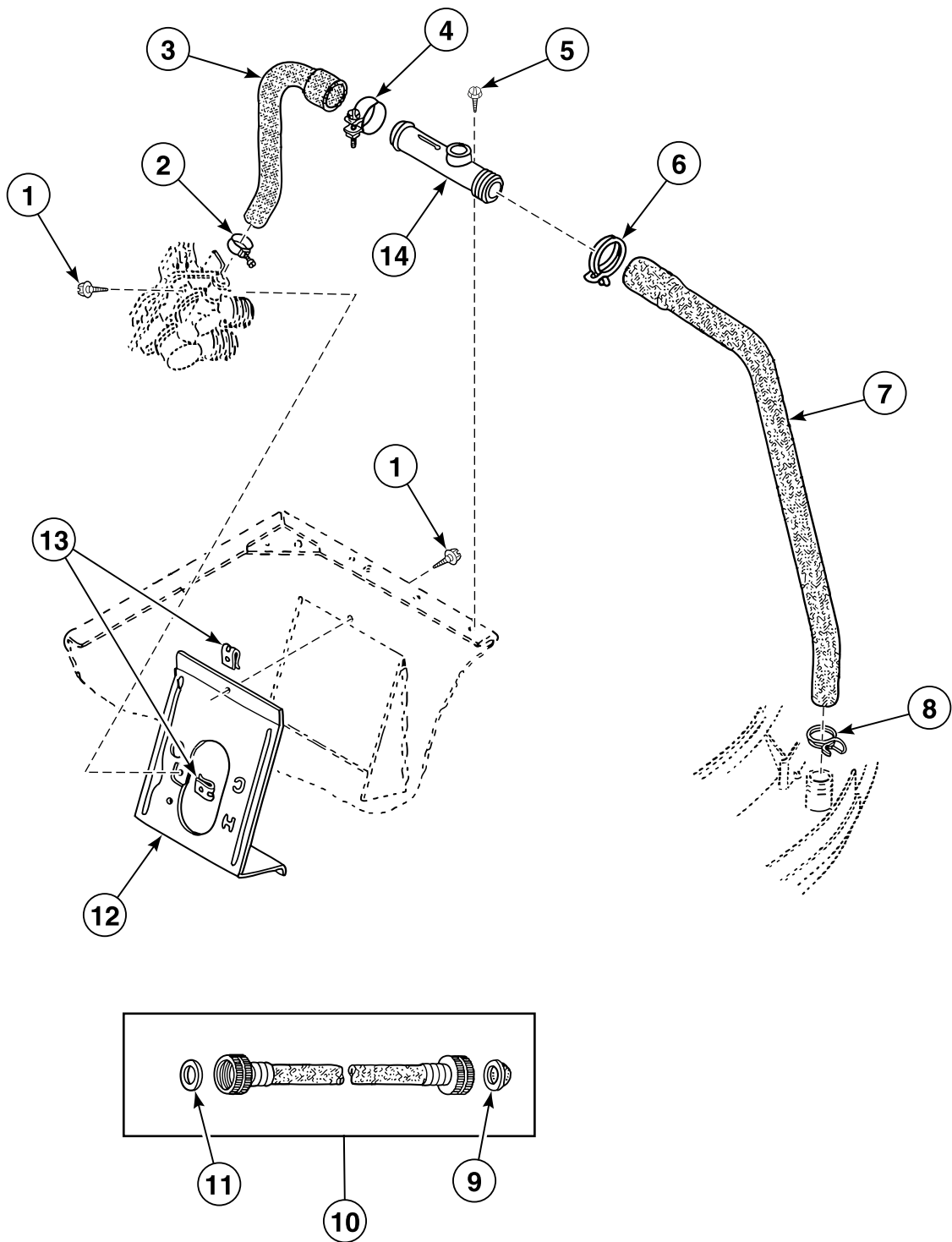


TLW1581P\_201928

WA1 P7

# Fill Hoses, Backflow Preventer and Mixing Valve Mounting Bracket (Drawing 2 of 2)

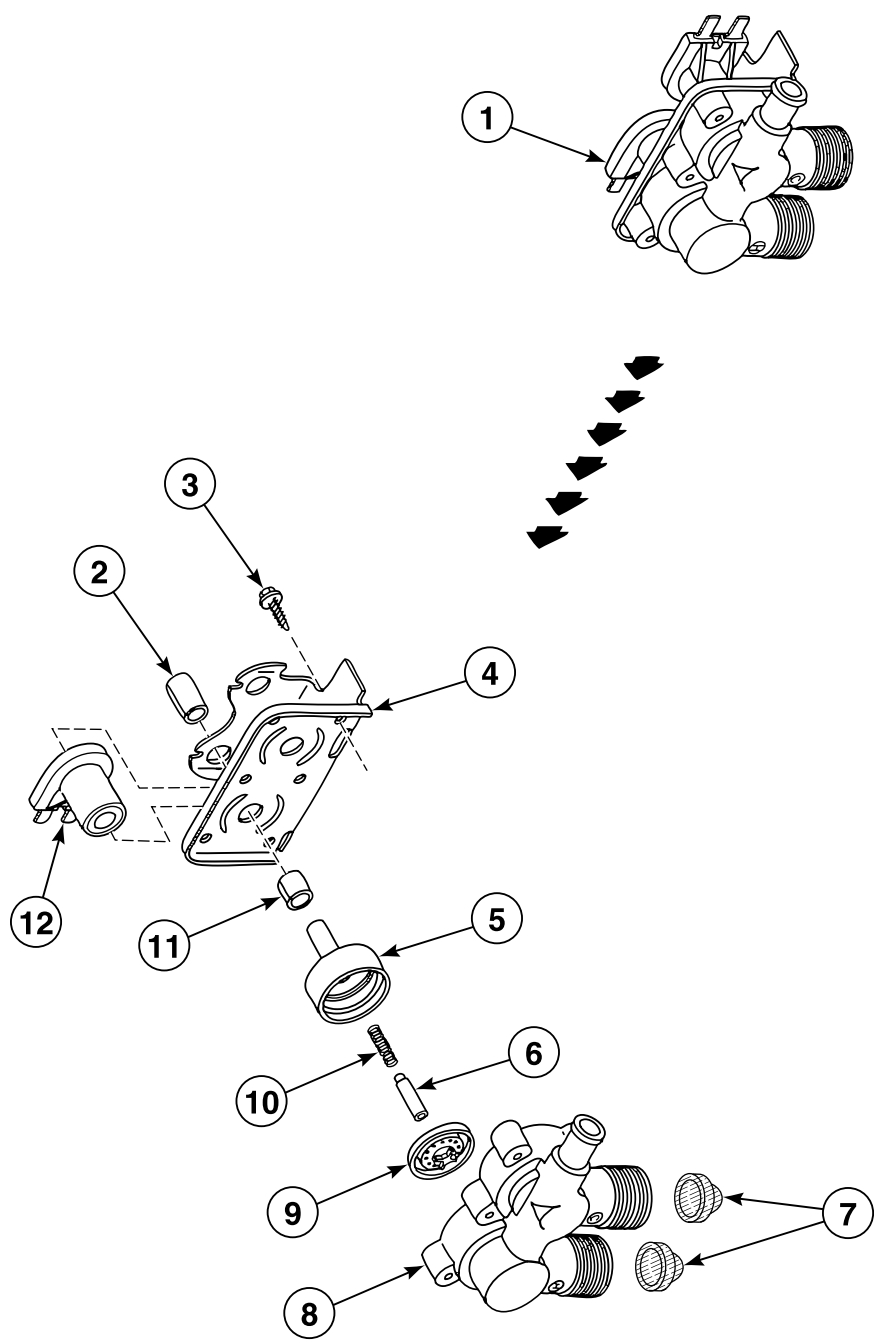
Models Starting Serial No. 14F02862



TLW1582P\_201928

WA1 P8

# Mixing Valve Assembly



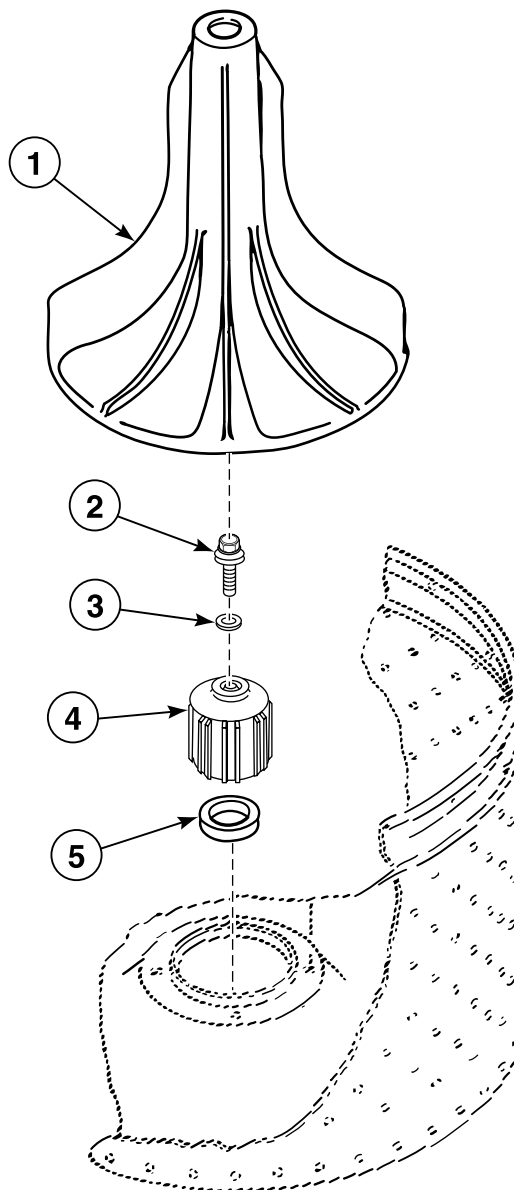
TLW1583P\_201928

WA1 P9



# Agitator, Drive Bell and Seal Seat

Short Post Models

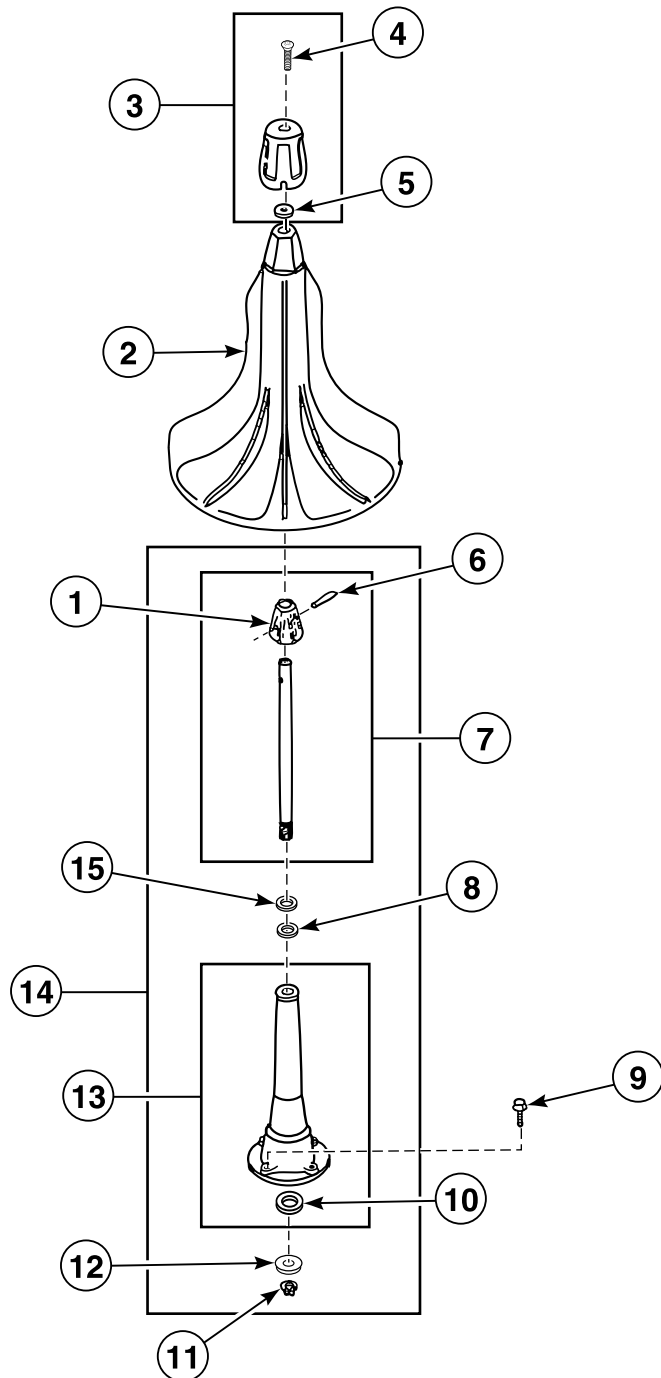


TLW1584P\_201928

WA1 P10

# Agitator and Post

Long Post Models

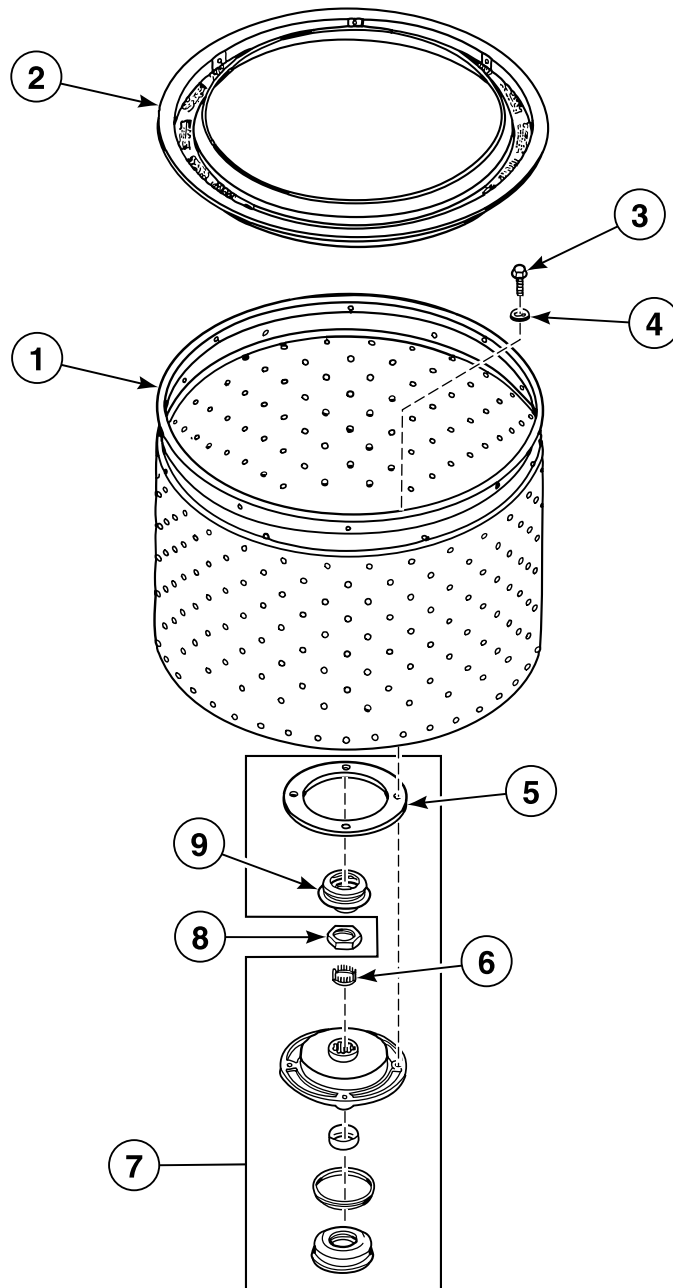


TLW1585P\_201928

WA1 P11

# Lint Filter, Washtub and Hub (Drawing 1 of 2)

Short Post Drive Models

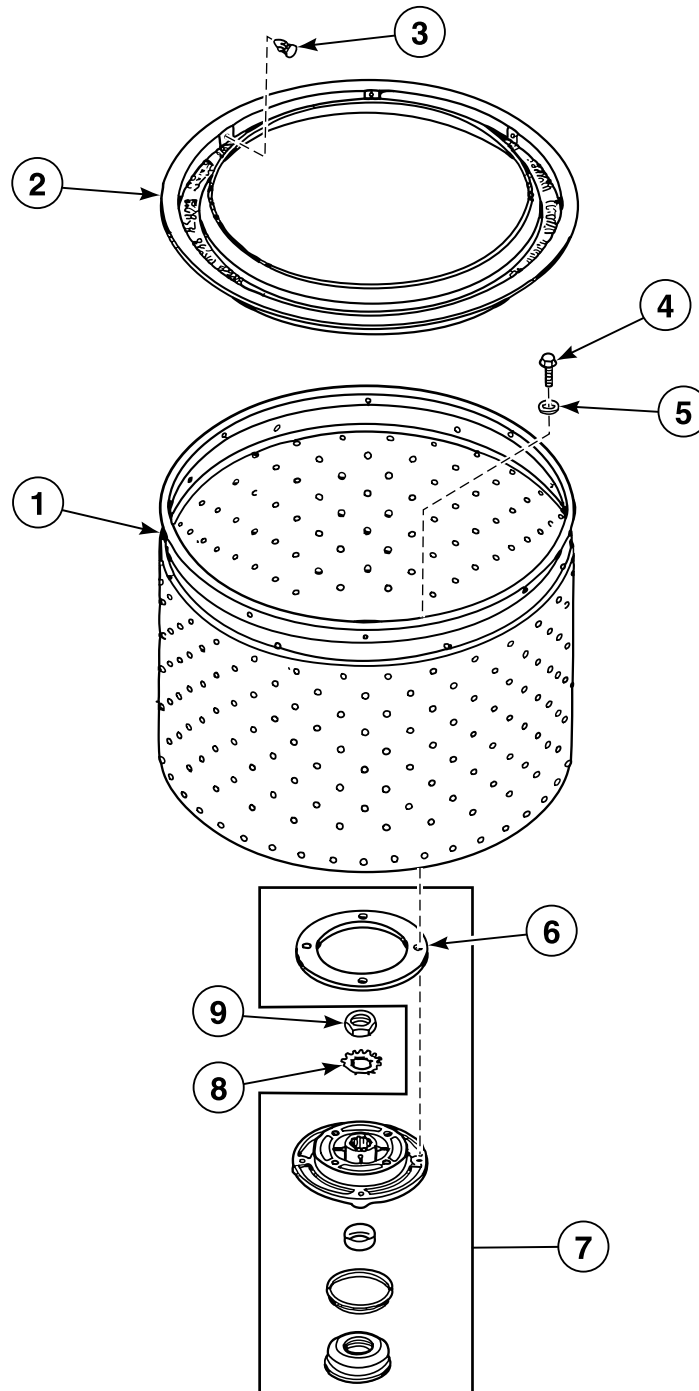


TLW1586P\_201928

WA1 P12

# Lint Filter, Washtub and Hub (Drawing 2 of 2)

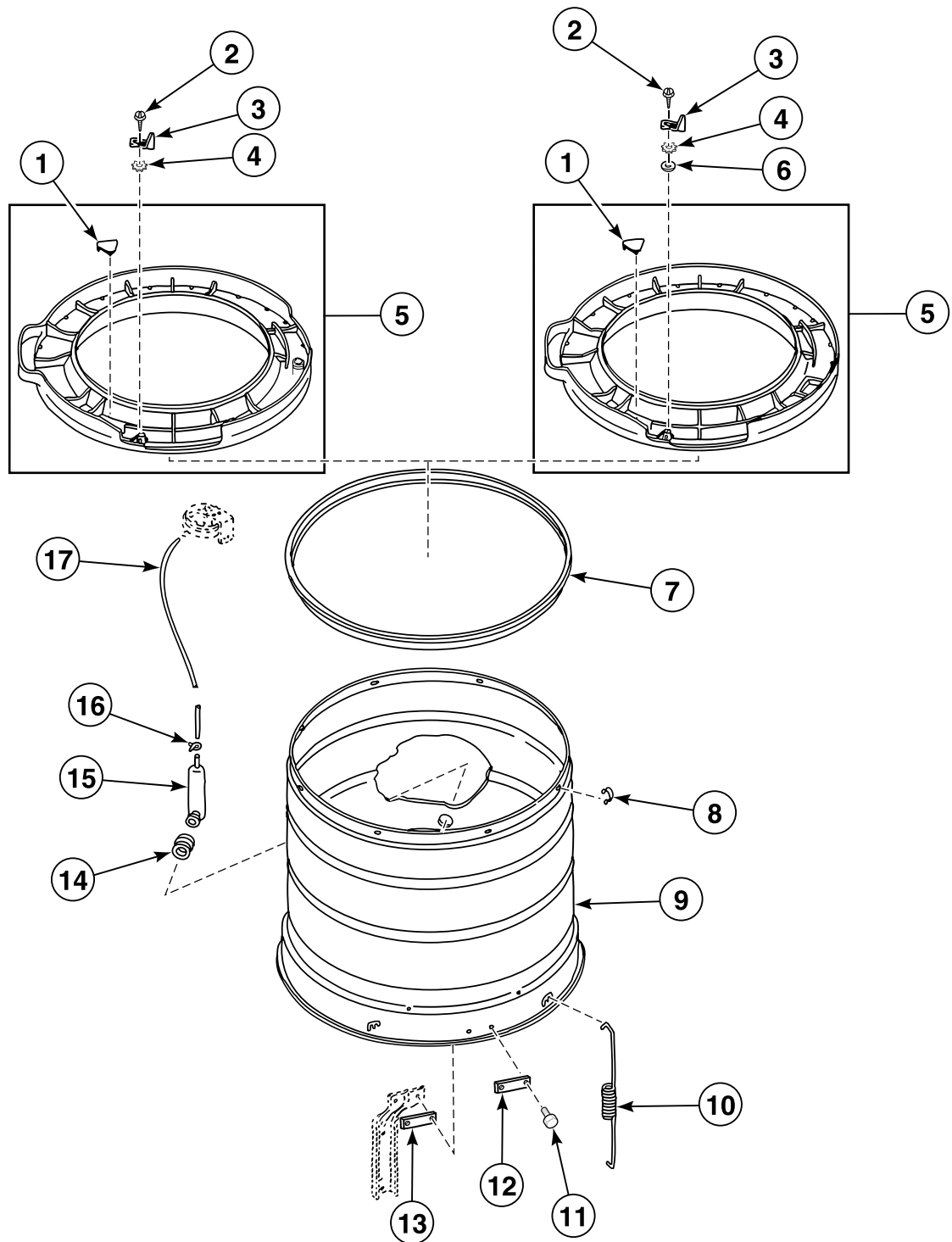
Long Post Drive Models



TLW1587P\_201928

WA1 P13

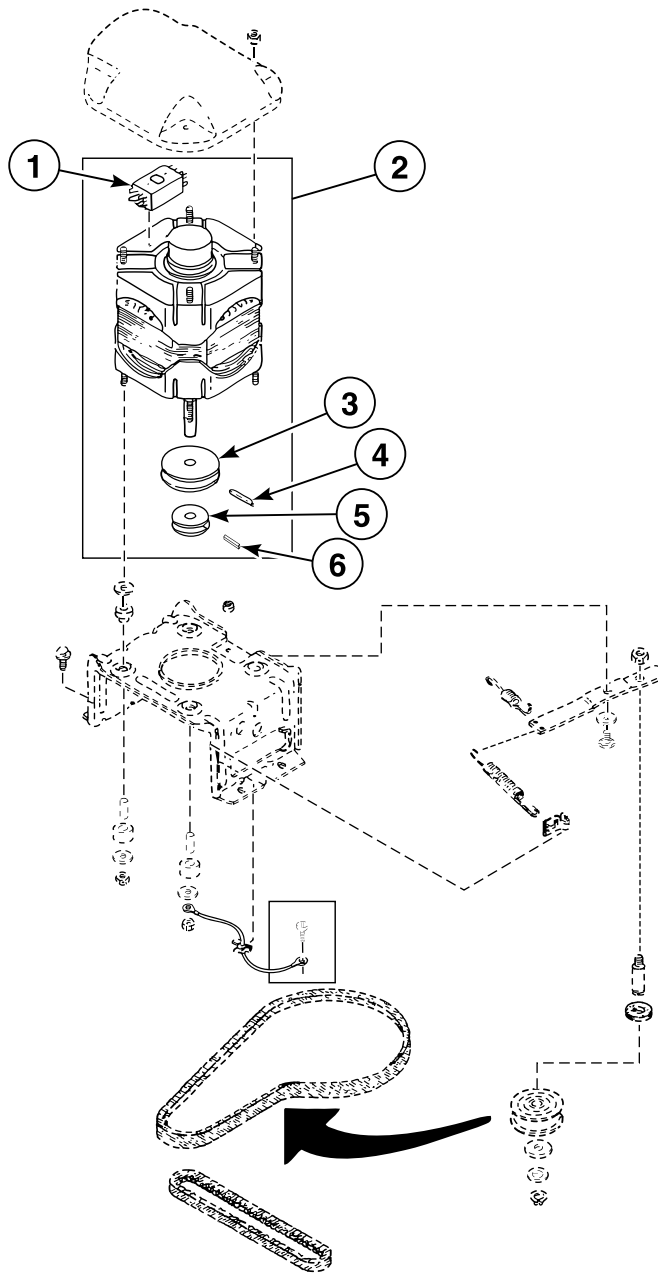
## Outer Tub, Cover and Pressure Hose



TLW1588P\_201928

WA1 P14

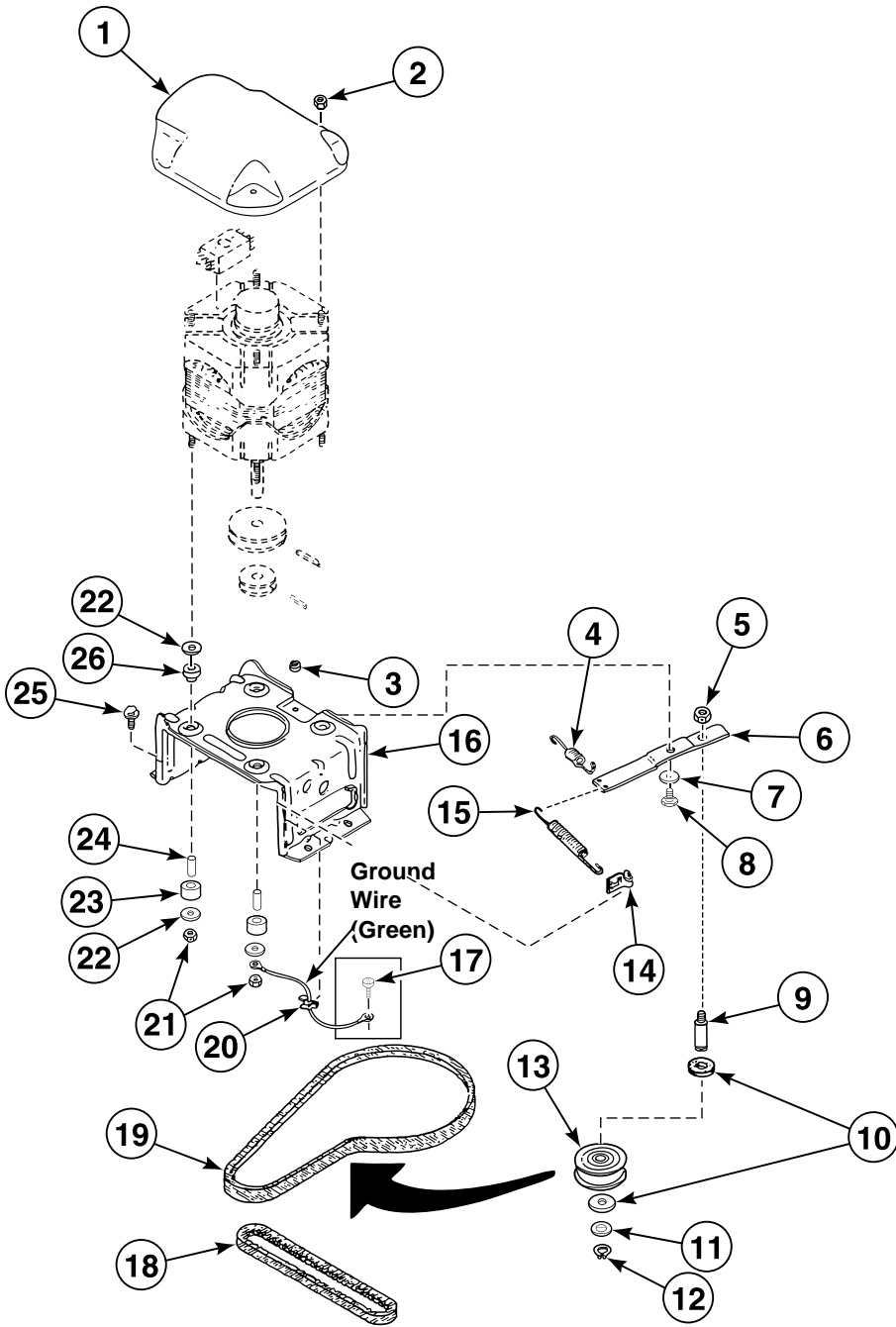
# Motor



TLW1589P\_201928

WA1 P15

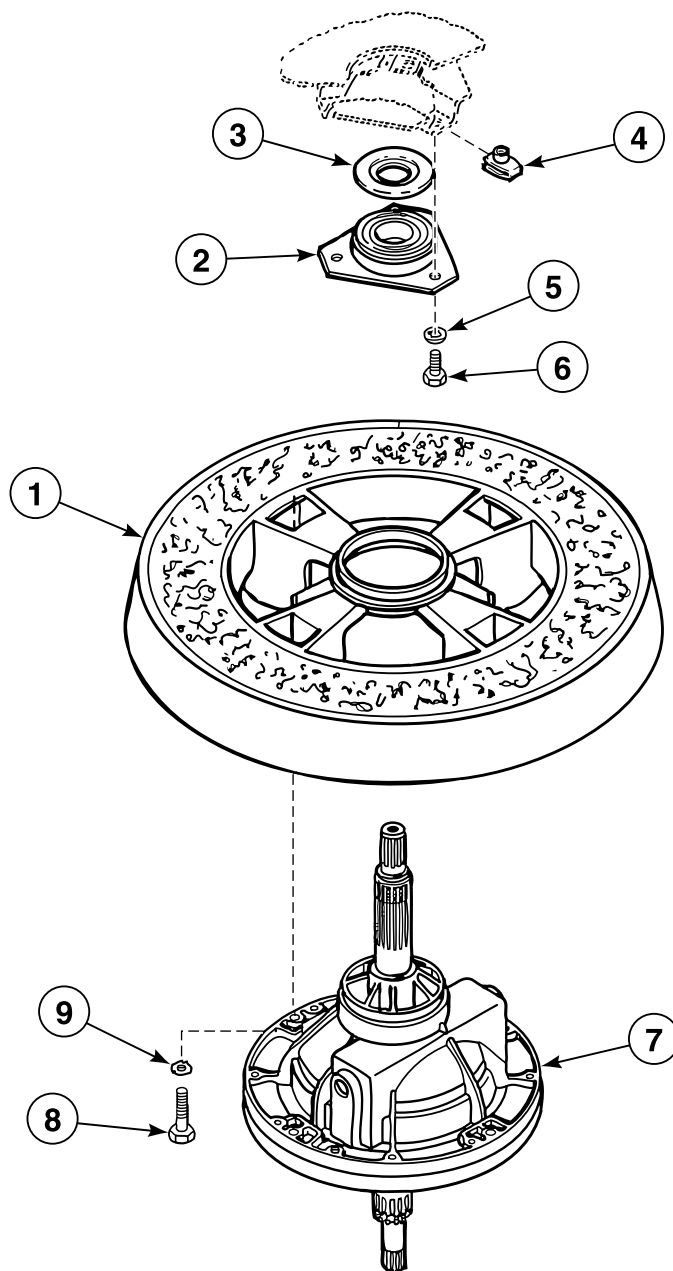
## Motor Mounting Bracket, Belts and Idler Assembly



TLW1589PA\_201928

# WA1 P16

# Transmission Assembly and Balance Ring - Short Post Models



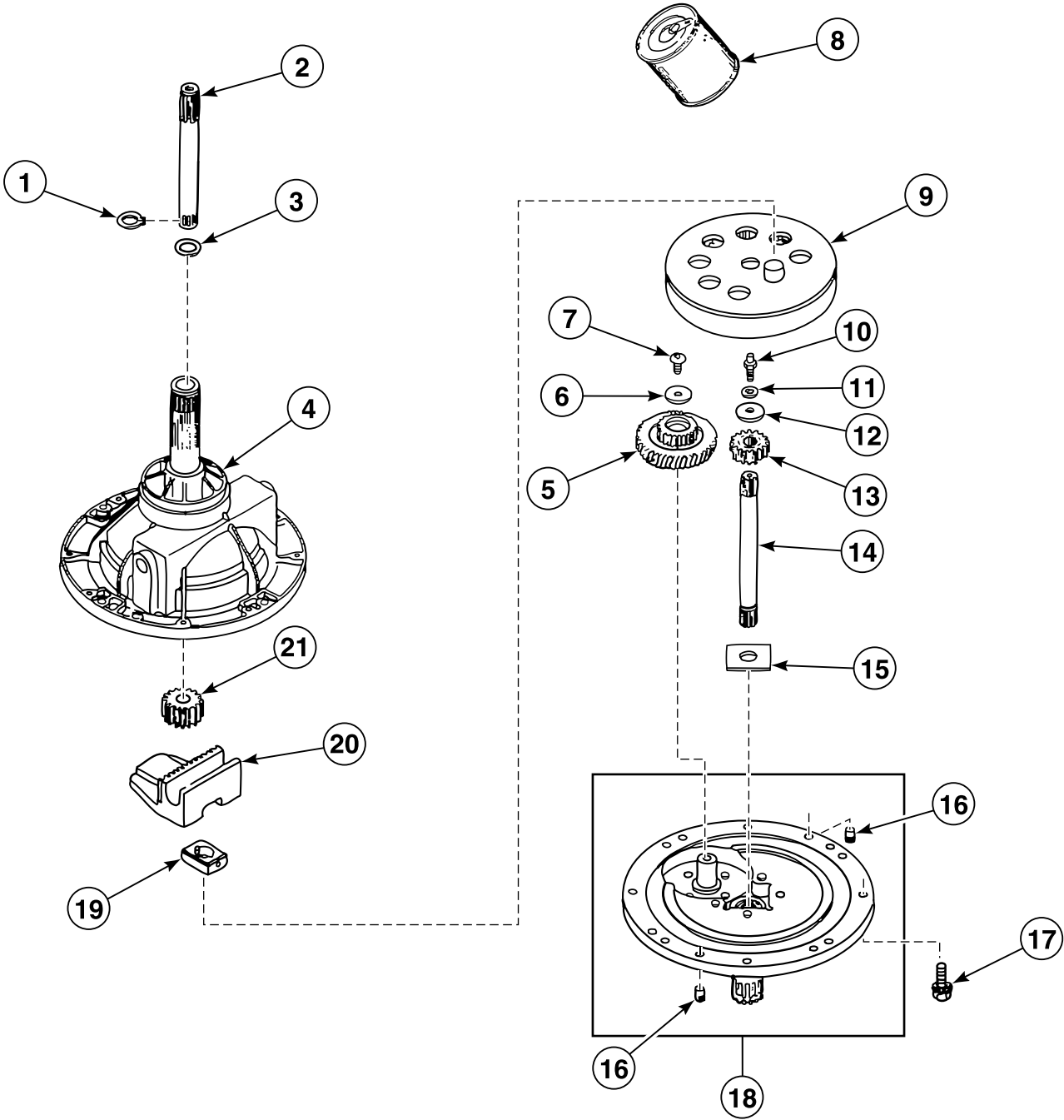
TLW1590P\_201928

WA1 P17



# Components for 33227P Transmission Assembly

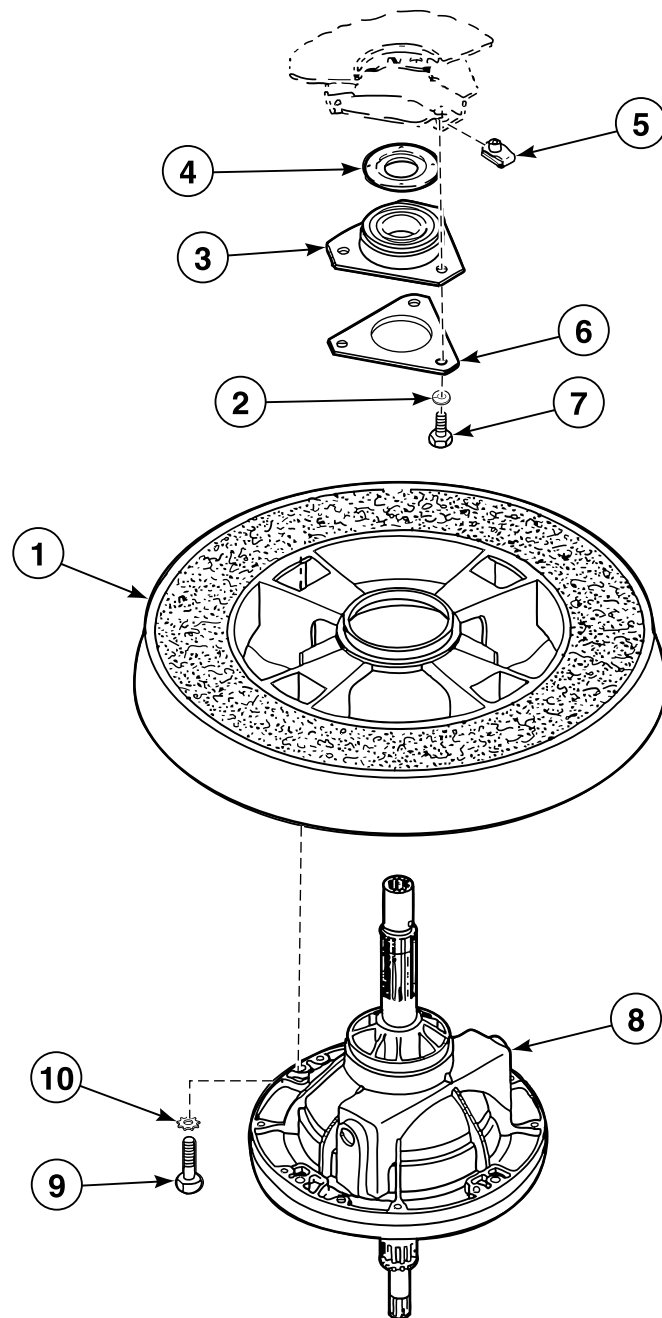
Short Post Models



TLW1591P\_201928

WA1 P18

# Transmission Assembly and Balance Ring - Long Post Models

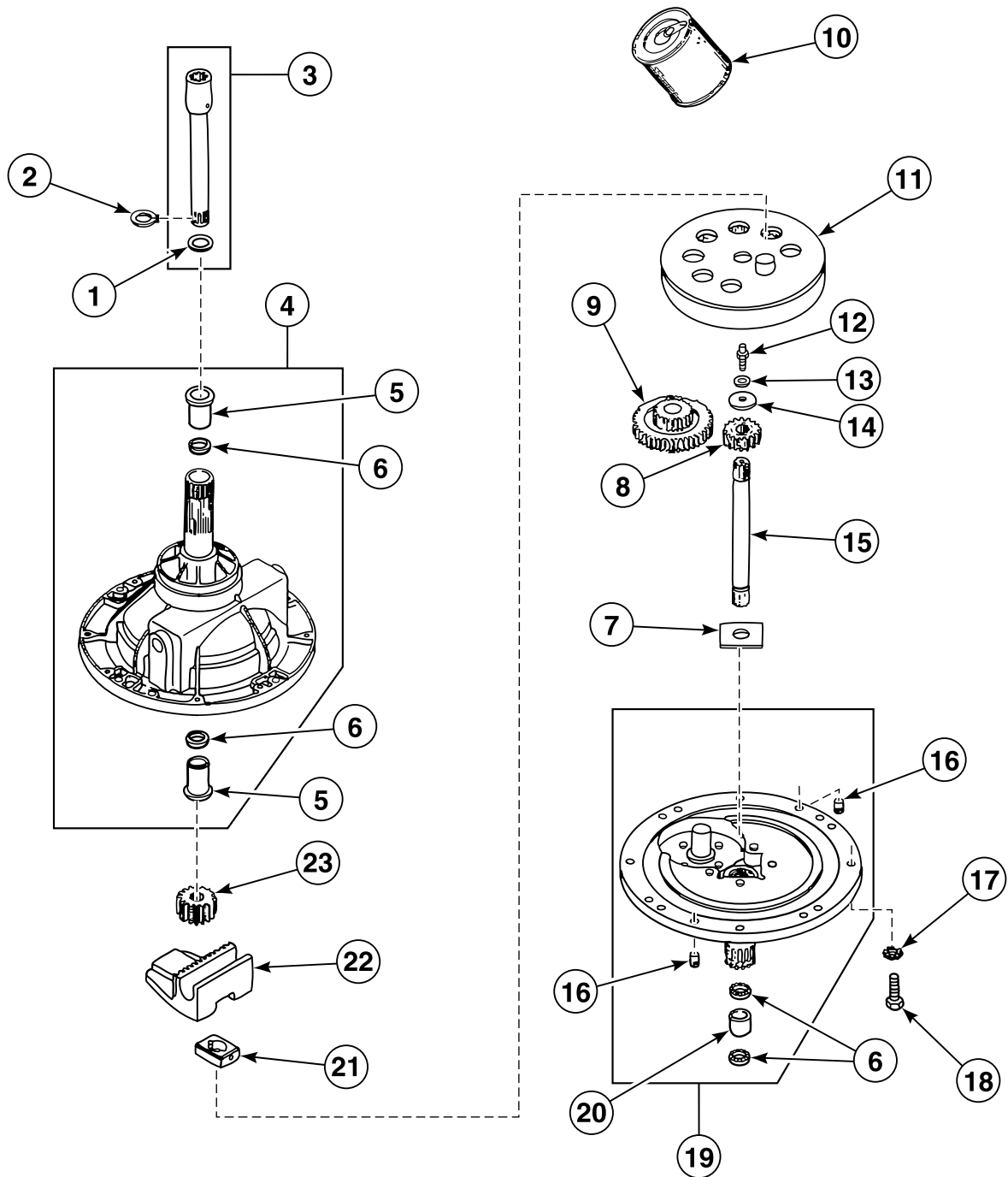


TLW1567P\_201928

WA1 P19

# Components for 28430 Transmission Assembly

Long Post Models Through Serial No. 1M295983

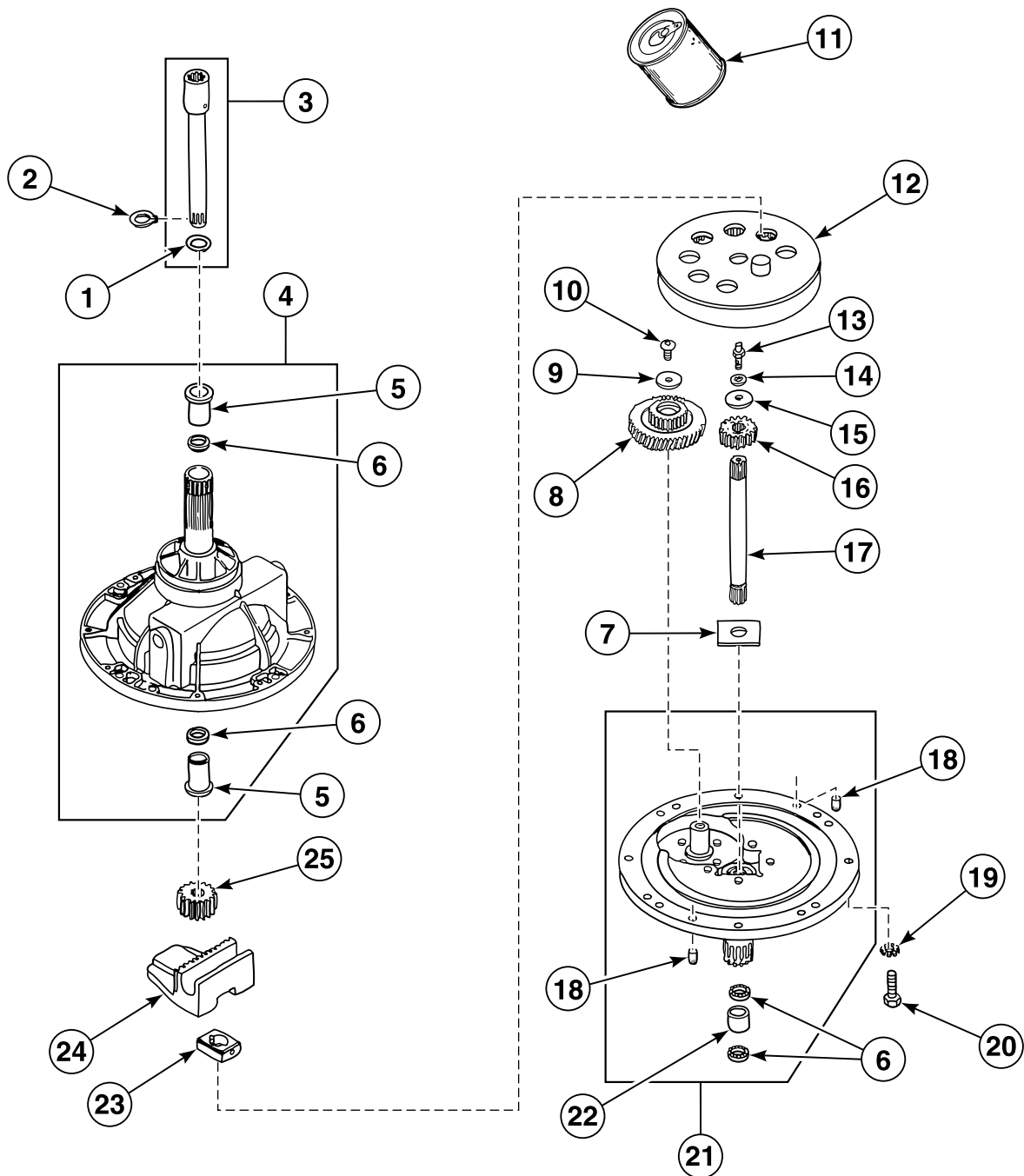


TLW1592P\_201928

WA1 P20

# Components for 30123 and 30946 Transmission Assemblies

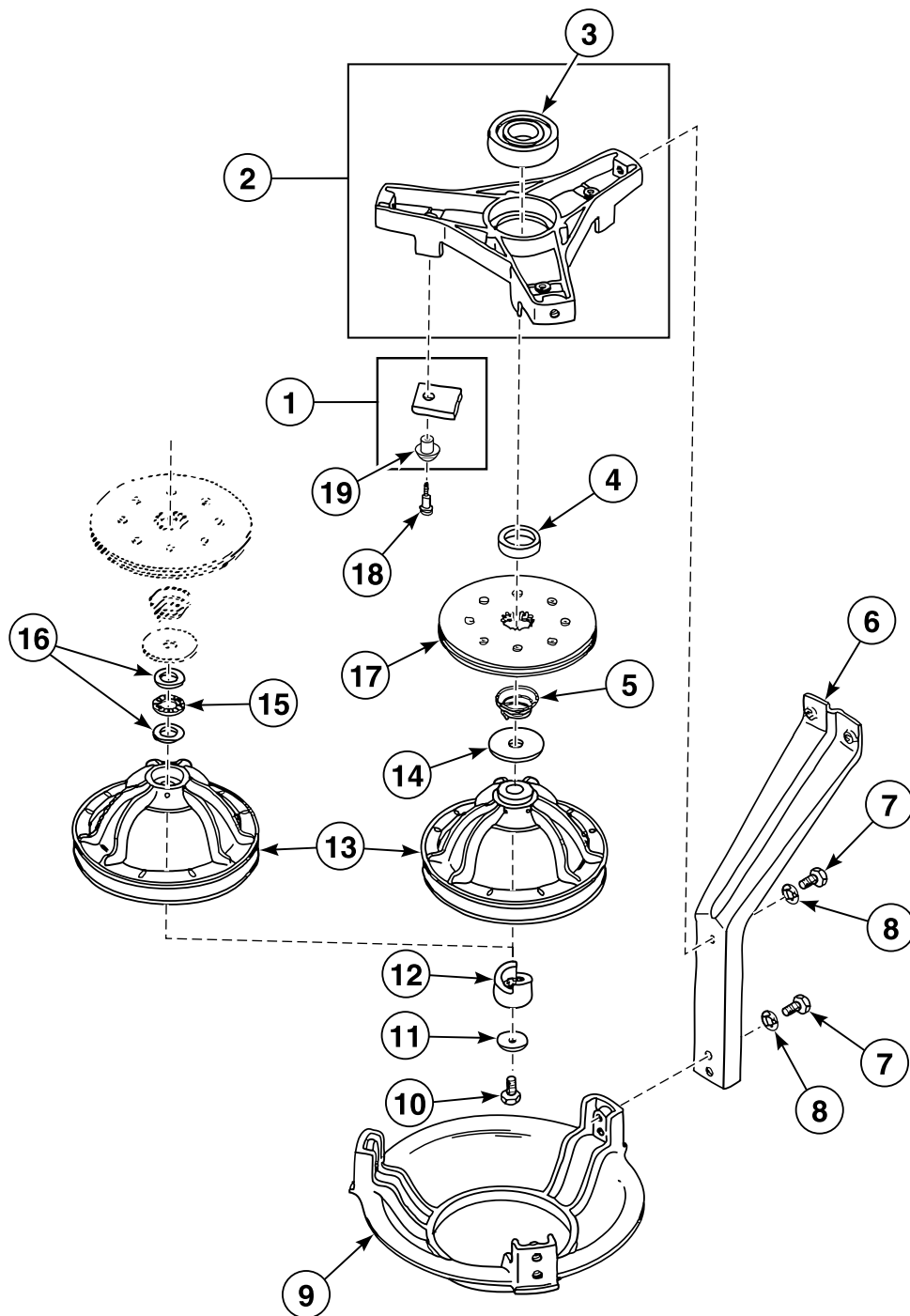
Long Post Models Starting Serial No. 1M295984



TLW1593P\_201928

WA1 P21

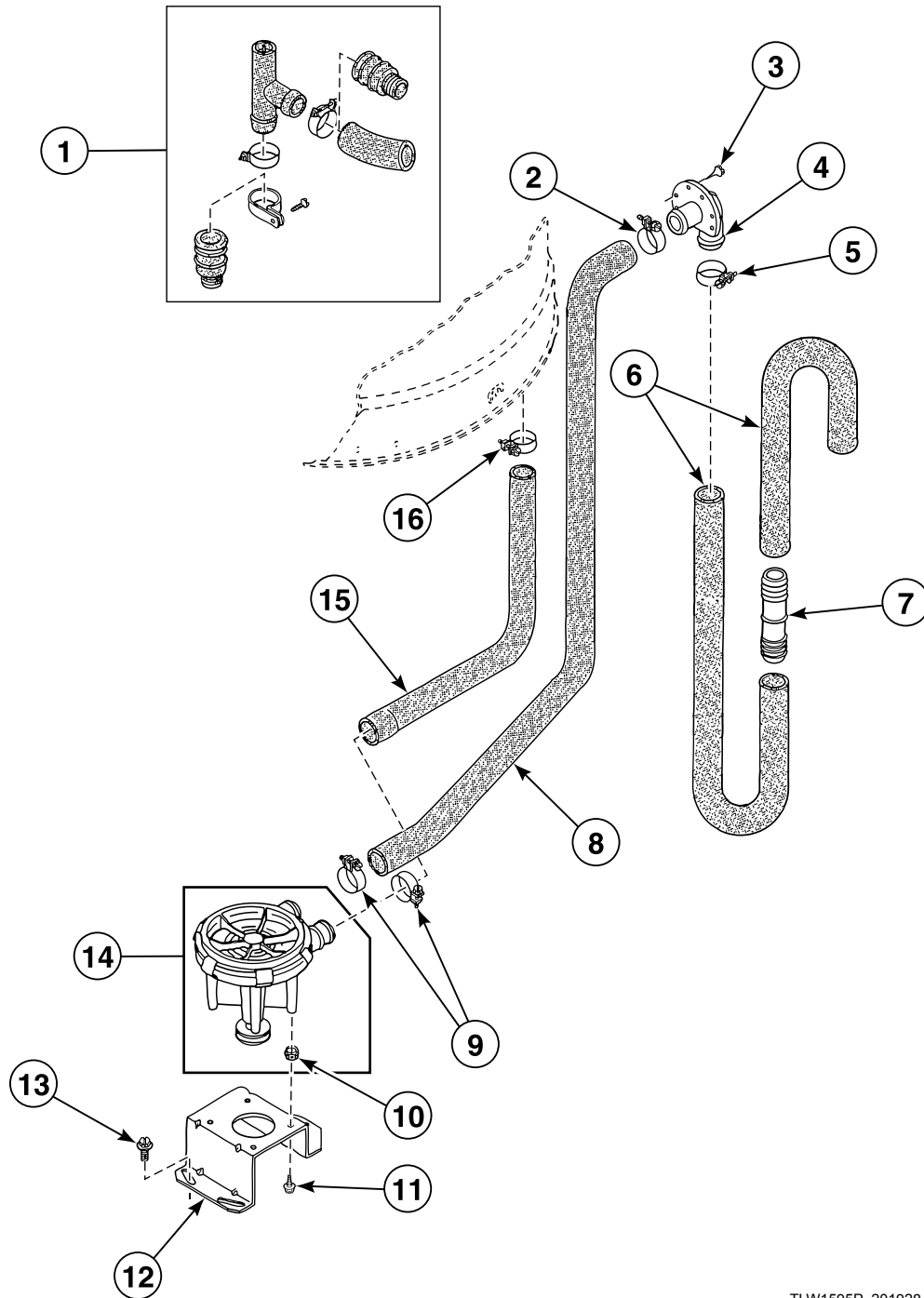
## Bearing Housing, Brake, Pulley and Pivot Dome



TLW1594P\_201928

WA1 P22

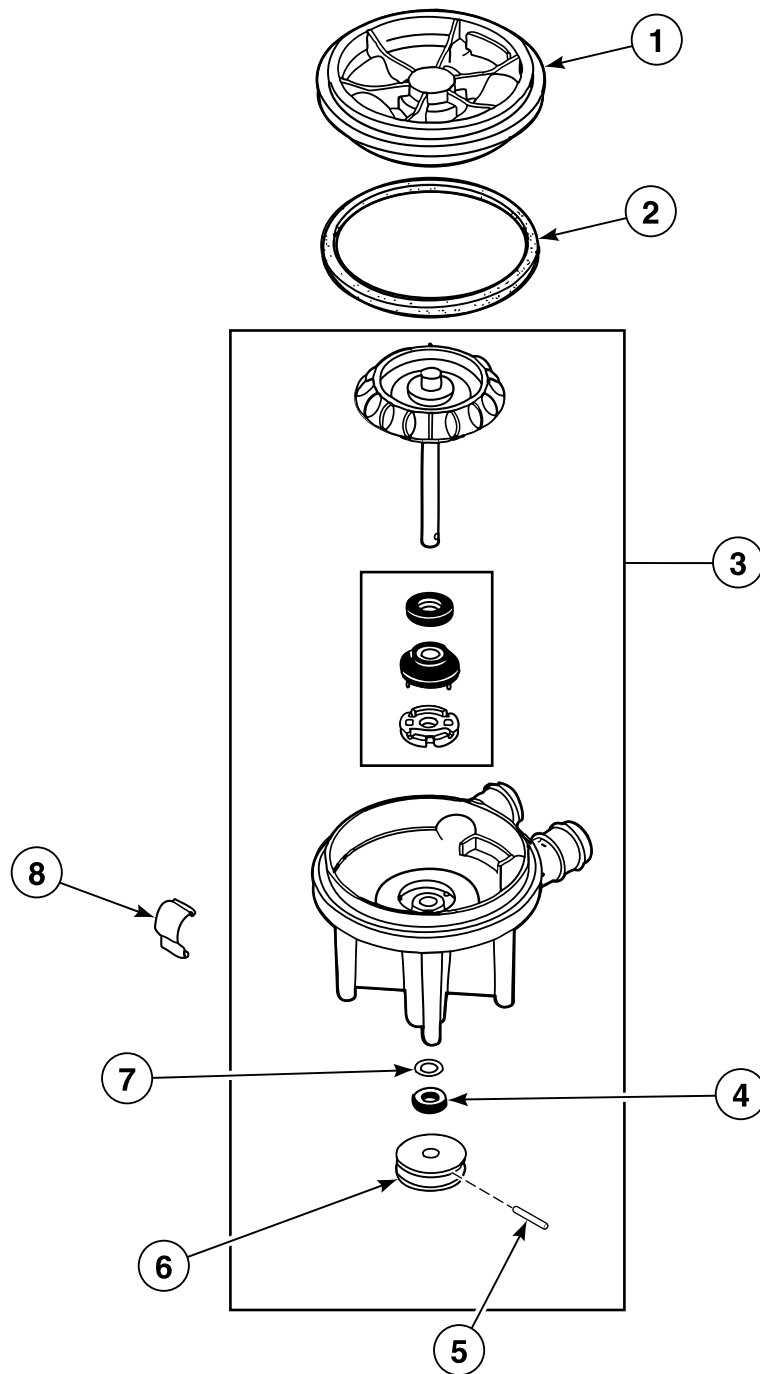
# Pump Assembly, Bracket, Hoses and Siphon Break Kit



TLW1595P\_201928

WA1 P23

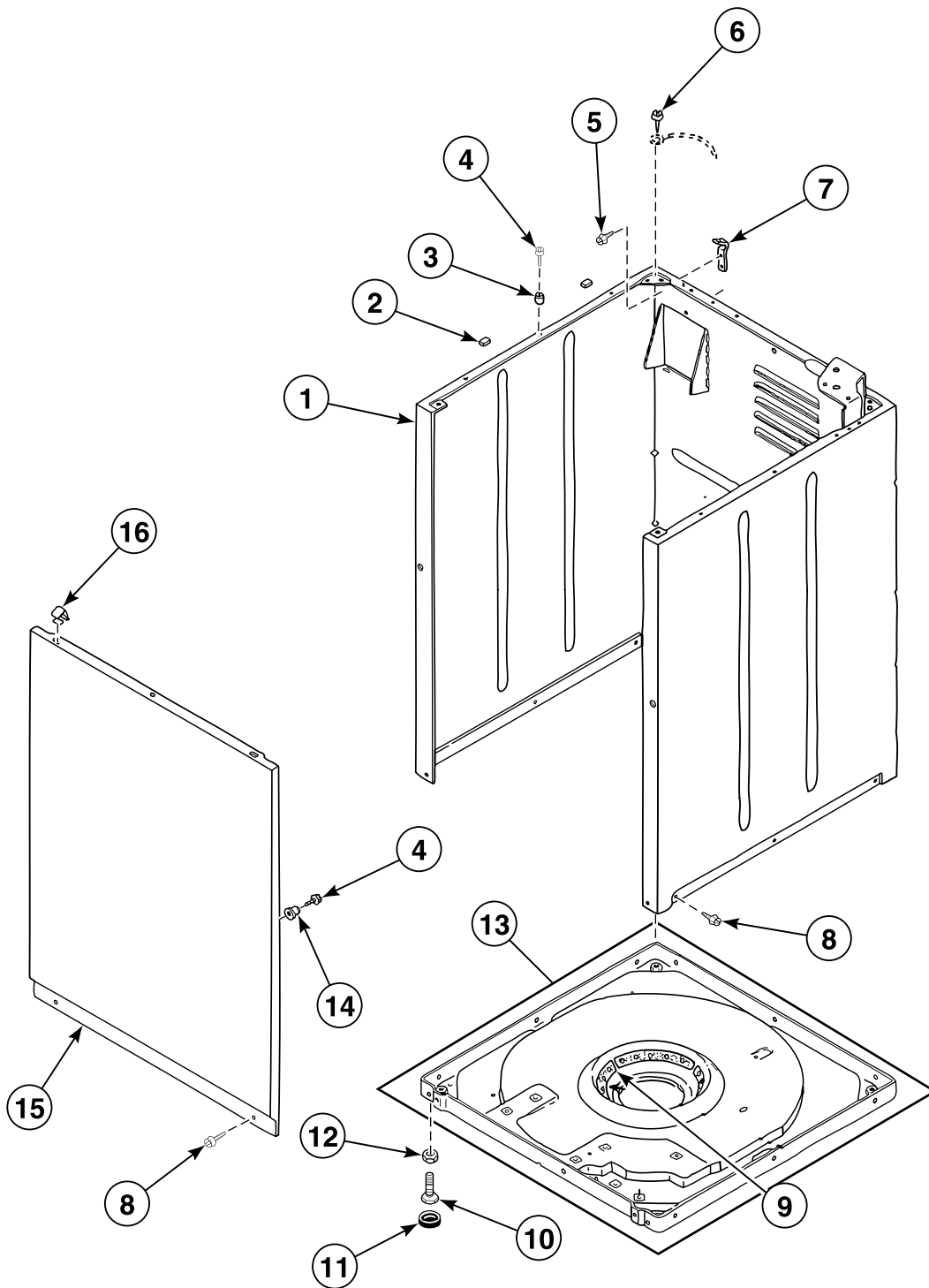
# Pump Assembly



TLW1570P\_201928

WA1 P24

## Front Panel, Cabinet and Base

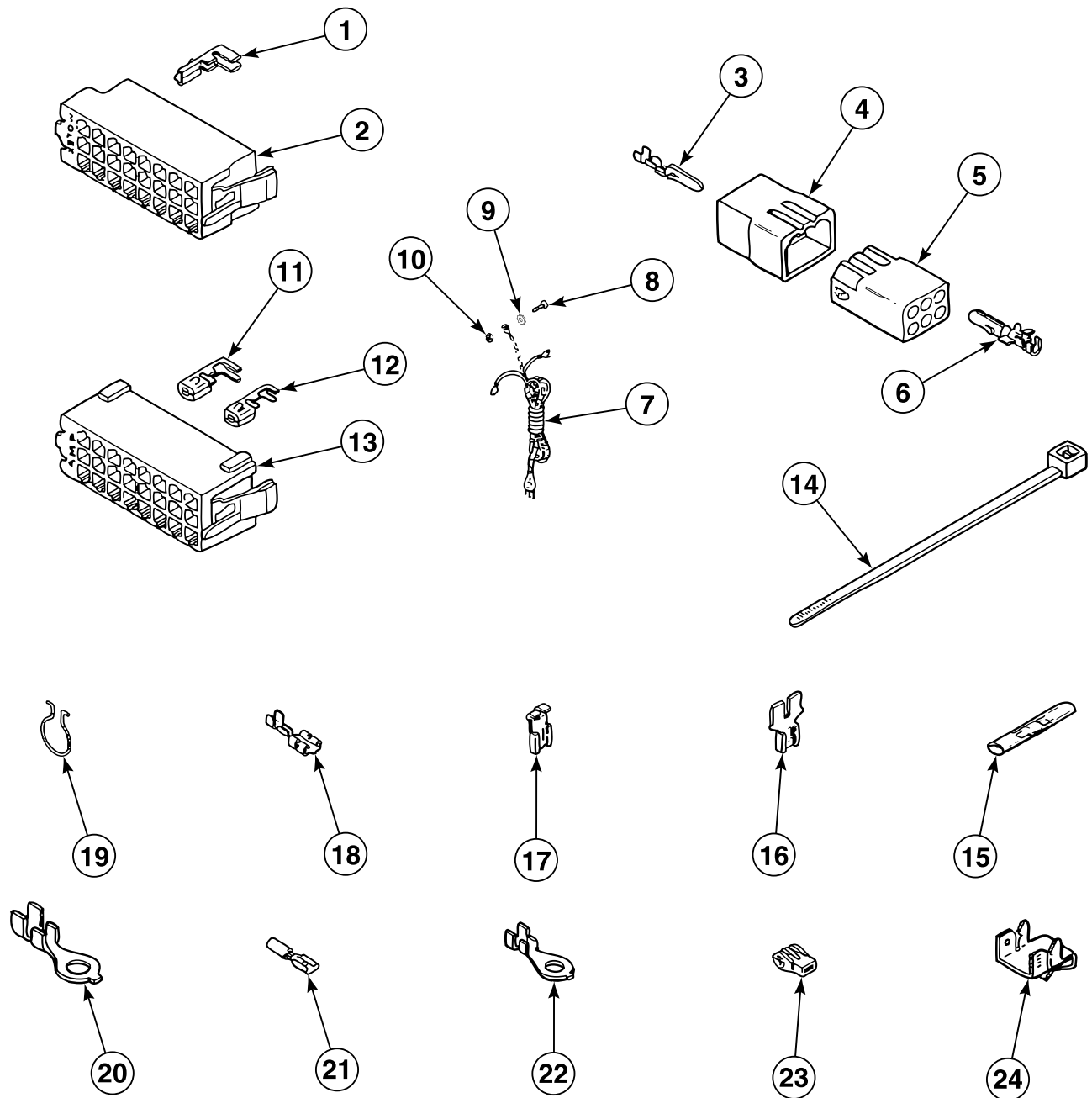


TLW1596P\_201928

WA1 P25



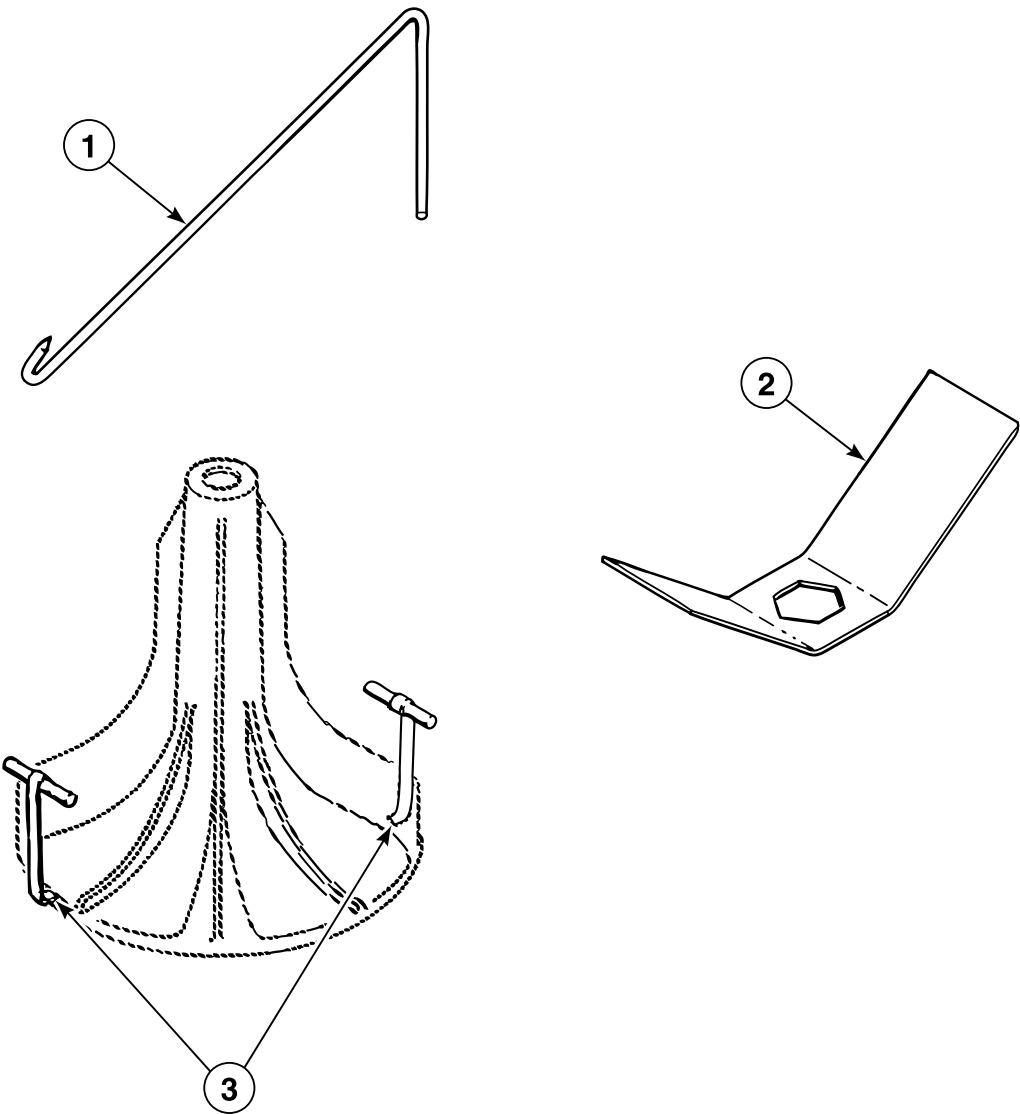
## Lead-In Cord, Wire Harnesses and Terminals



TLW1597P\_201928

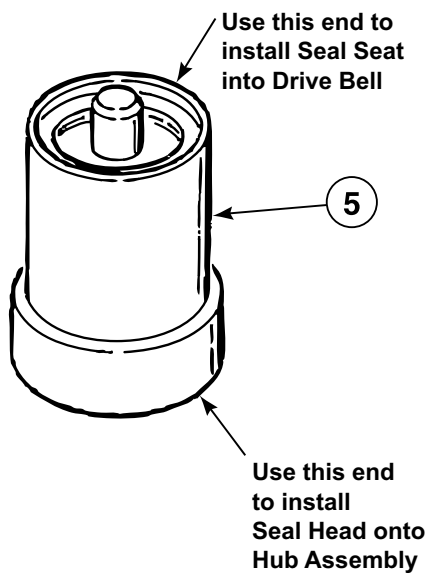
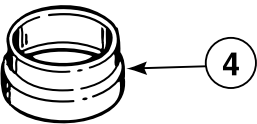
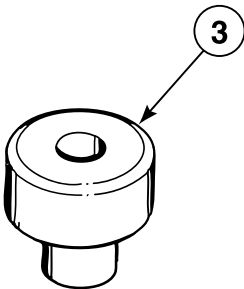
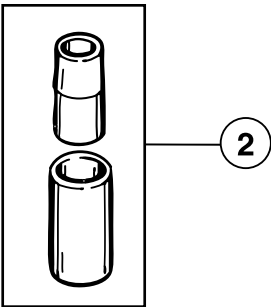
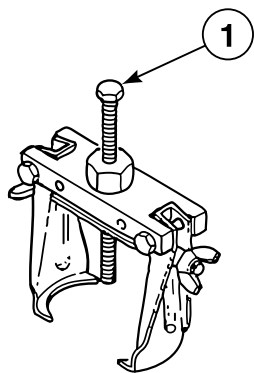
WA1 P26

Special Tools (Drawing 1 of 2)



TLW1667P\_201928

Special Tools (Drawing 2 of 2)



TLW1668P\_201928